
INFECTIOUS DISEASES WEEKLY REPORT

TOKYO IDWR

Tokyo Metropolitan Infectious Disease Surveillance Center

26 July 2021 / Number 28
(7/12 ~ 7/18)

Surveillance System in Tokyo, Japan

The infectious diseases which all physicians must report
All physicians must report to health centers the incidence of the diseases which are shown at page one. Health centers electronically report the individual cases to Tokyo Metropolitan Infectious Disease Surveillance Center.

The infectious diseases required to be reported by the sentinels
The numbers of patients who visit the sentinel clinics or hospitals during a week are reported to health centers in Tokyo. And they electronically report the numbers to Tokyo Metropolitan Infectious Disease Surveillance Center. We have about 500 sentinel clinics and hospitals in Tokyo.

Tokyo Metropolitan Institute of Public Health

TEL:81-3-3363-3213 FAX:81-3-5332-7365

e-mail:www@tokyo-eiken.go.jp

URL:idsc.tokyo-eiken.go.jp/

Number of patients with the diseases which all physicians must report

Category	Diseases	Tokyo					Japan	
		25th	26th	27th	28th	Cum 2021	28th	Cum 2021
I	Ebola hemorrhagic fever							
	Crimean-Congo hemorrhagic fever							
	Smallpox							
	South American hemorrhagic fever							
	Plague							
	Marburg disease							
	Lassa fever							
II	Acute poliomyelitis							
	Tuberculosis	47	59	43	37	1,202	258	8,417
	Diphtheria							
	Severe Acute Respiratory Syndrome(SARS)							
	Middle East Respiratory Syndrome (MERS)							
	Avian influenza H5N1							
	Avian influenza H7N9							
III	Cholera							
	Shigellosis					2		4
	Enterohemorrhagic Escherichia coli infection	8	15	12	11	122	122	1,173
	Typhoid fever							
	Paratyphoid fever							
IV	Hepatitis E	1	1		2	75	7	277
	West Nile fever							
	Hepatitis A			1		10	1	40
	Echinococcosis					1		16
	Yellow fever							
	Psittacosis							5
	Omsk hemorrhagic fever							
	Relapsing fever							3
	Kyasanur forest disease							
	Q fever					1		1
	Rabies							
	Coccidioidomycosis							
	Monkeypox							
	Zika virus infection							
	Severe Fever with Thrombocytopenia Syndrome						3	70
	Hemorrhagic fever with renal syndrome							
	Western equine encephalitis							
	Tick-borne encephalitis							
	Anthrax							
	Chikungunya fever							
	Scrub typhus(Tsutsugamushi disease)					2	3	123
	Dengue fever							
	Eastern equine encephalitis							
	Avian influenza (excluding H5N1 and H7N9)							
	Nipah virus infection							
	Japanese spotted fever			1	1	3	16	196
	Japanese encephalitis							
	Hantavirus pulmonary syndrome							
	Herpes B virus infection							
	Glanders							
	Brucellosis							1
	Venezuelan equine encephalitis							
	Hendra virus infection							
	Epidemic typhus							
Botulism					1		2	
Malaria				1	2	1	8	
Tularemia								
Lyme disease							9	
Lyssavirus infection(excluding rabies)								
Rift valley fever								
Melioidosis								
Legionellosis	1	2	1	9	56	104	871	
Leptospirosis					1	2	5	
Rocky mountain spotted fever								

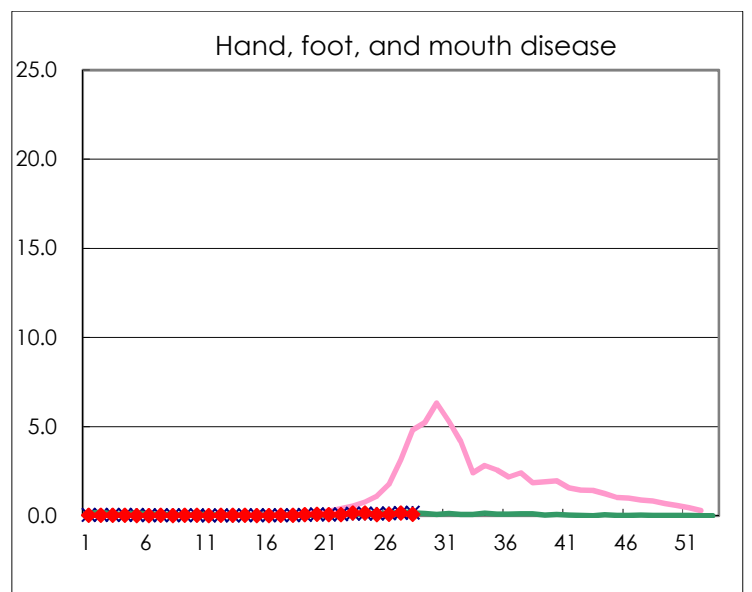
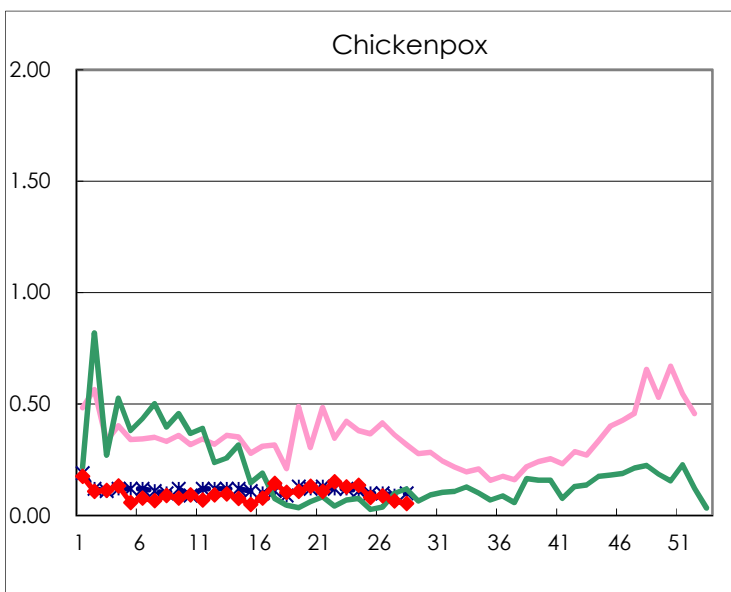
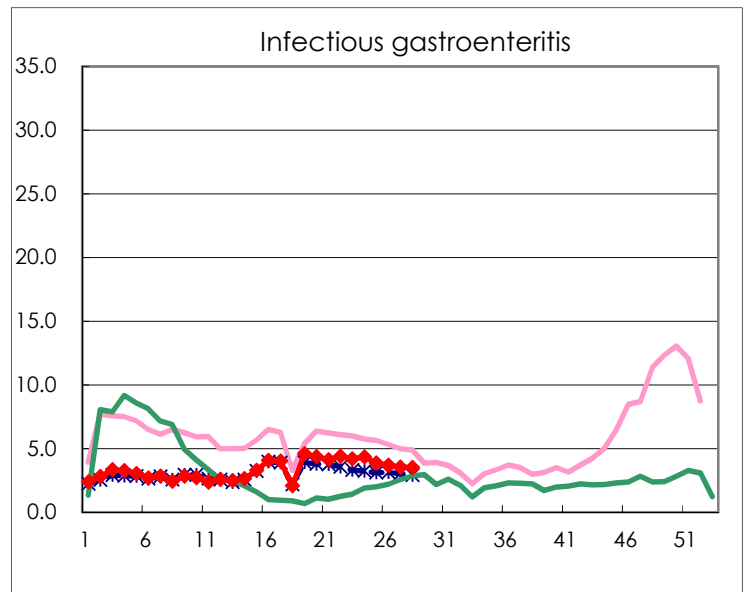
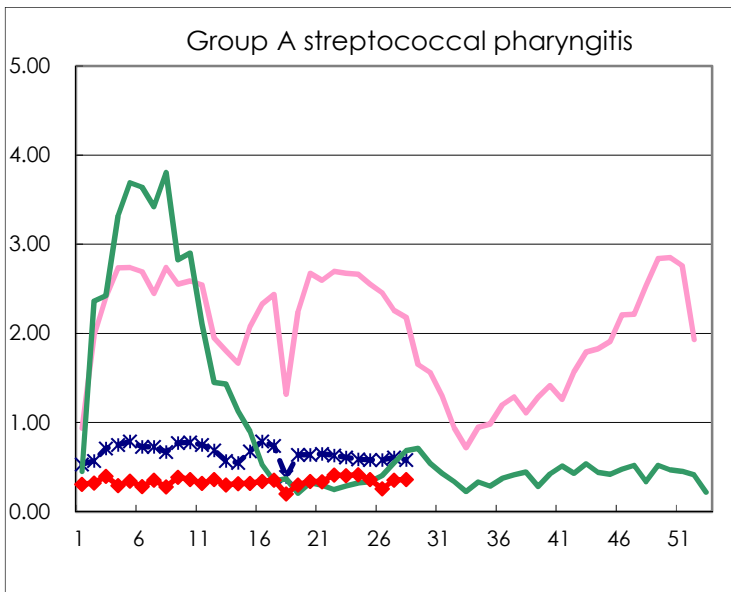
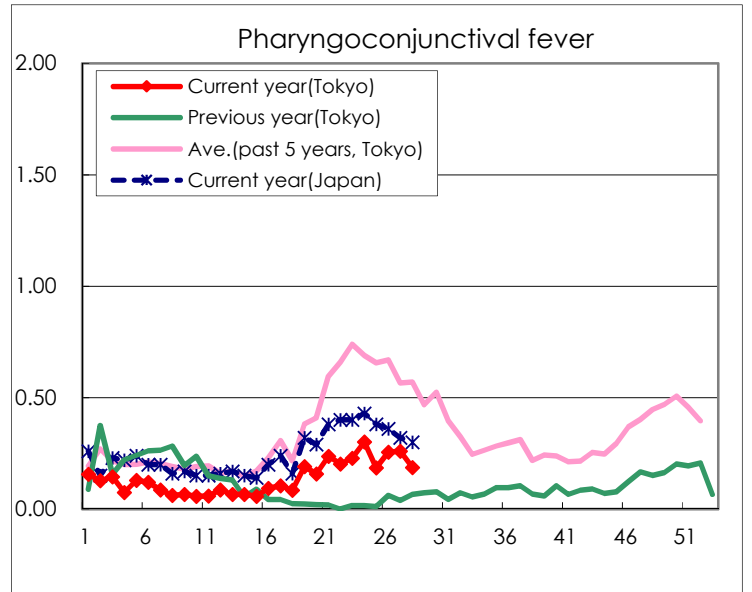
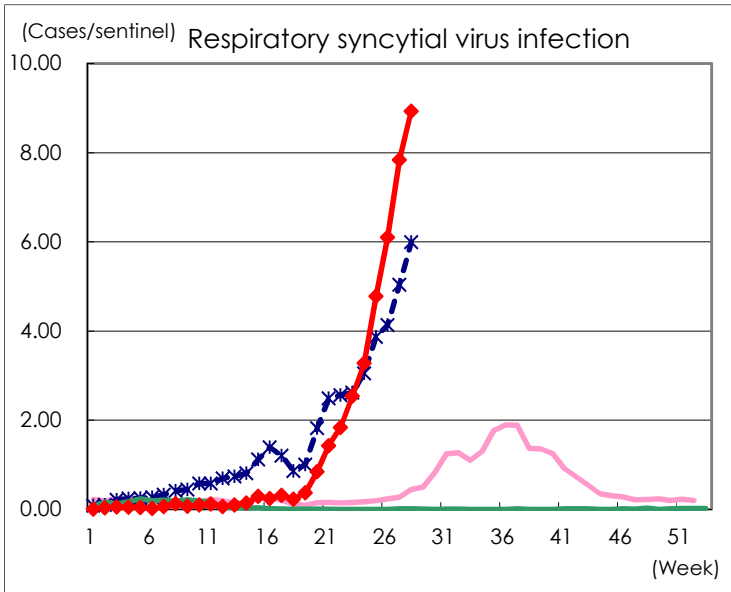
Category	Diseases	Tokyo					Japan	
		25th	26th	27th	28th	Cum 2021	28th	Cum 2021
V	Amebiasis	3	1	2	3	51	12	294
	Viral hepatitis(excluding hepatitis A and E)			2		28	3	103
	CRE infection	3	2	6	2	103	18	981
	Acute Flaccid Paralysis (excluding Acute poliomyelitis)					2		9
	Acute encephalitis(excluding JE and WNE)				2	10	7	189
	Cryptosporidiosis							3
	Creutzfeldt-Jakob disease		2			9	2	87
	Severe invasive streptococcal infections(TSLS)			1		35	7	343
	Acquired immunodeficiency syndrome (AIDS)	7	3	8	12	200	17	554
	Giardiasis			1		7		21
	Invasive <i>Haemophilus influenzae</i> disease	2				14	2	117
	Invasive meningococcal disease							1
	Invasive pneumococcal disease	3	2	4	3	71	14	765
	Varicella (limited to hospitalized case)				3	17	6	146
	Congenital rubella syndrome							1
	Syphilis	58	36	48	47	1,188	107	3,630
	Disseminated cryptococcosis					7		76
	Tetanus					2		45
	Vancomycin-resistant <i>S. aureus</i> infection							
	Vancomycin-resistant <i>Enterococcus</i> infection					4	1	71
	Pertussis	1				33	8	353
Rubella					1		7	
Measles							3	
MDRA infection							1	

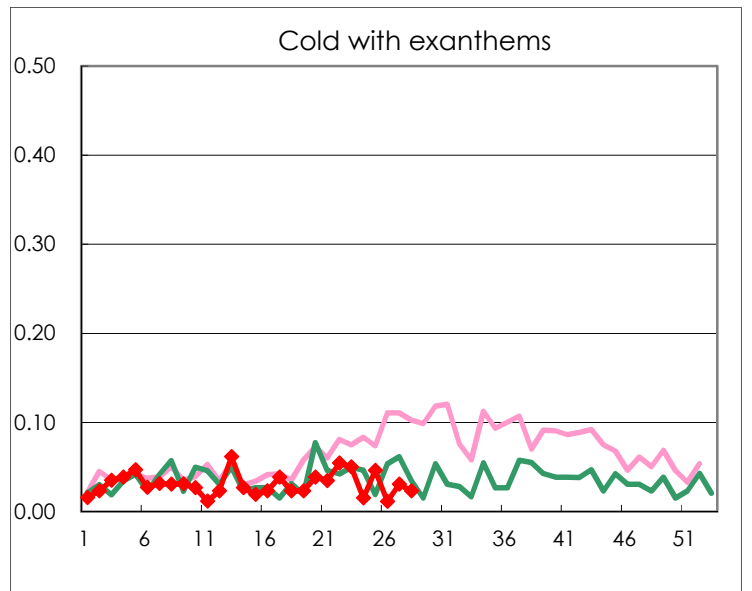
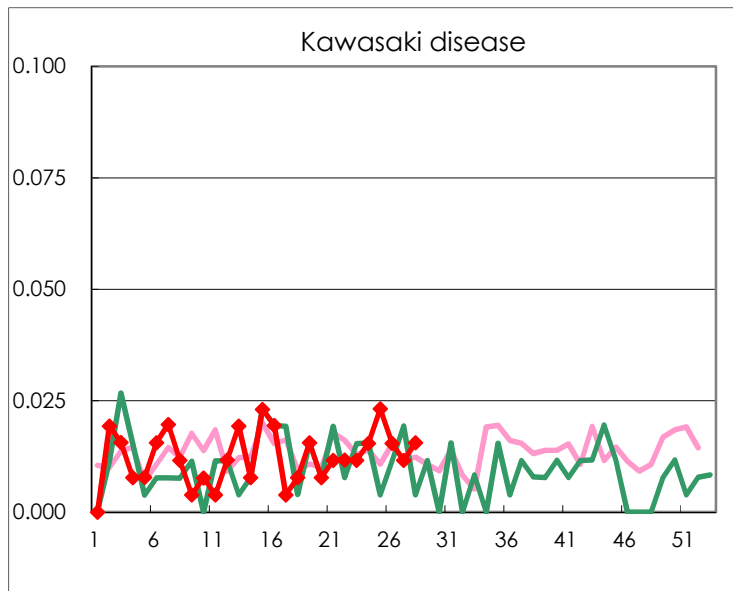
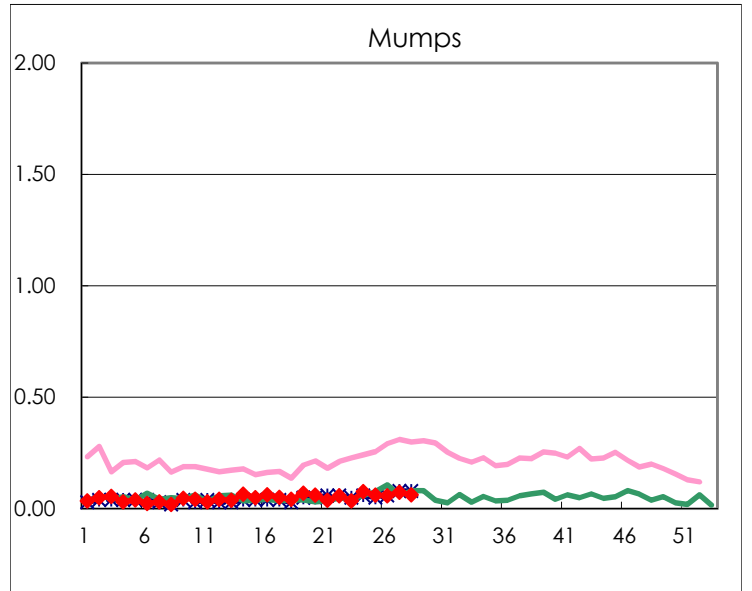
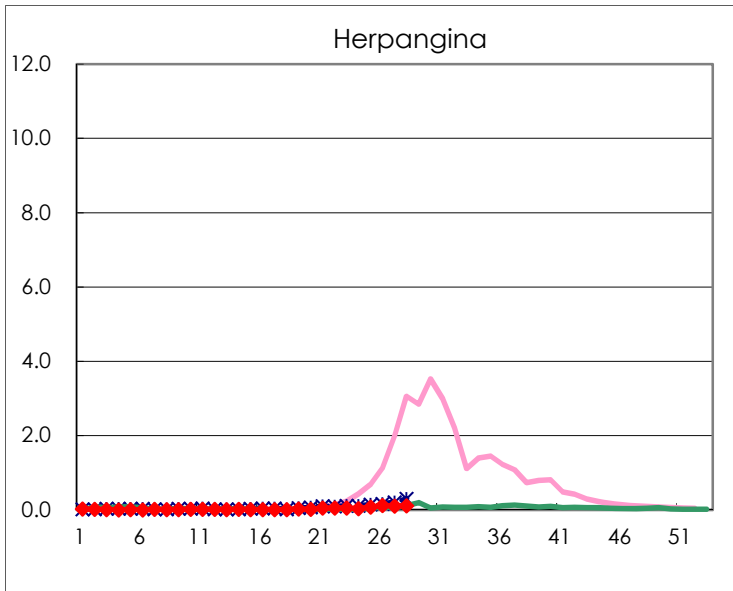
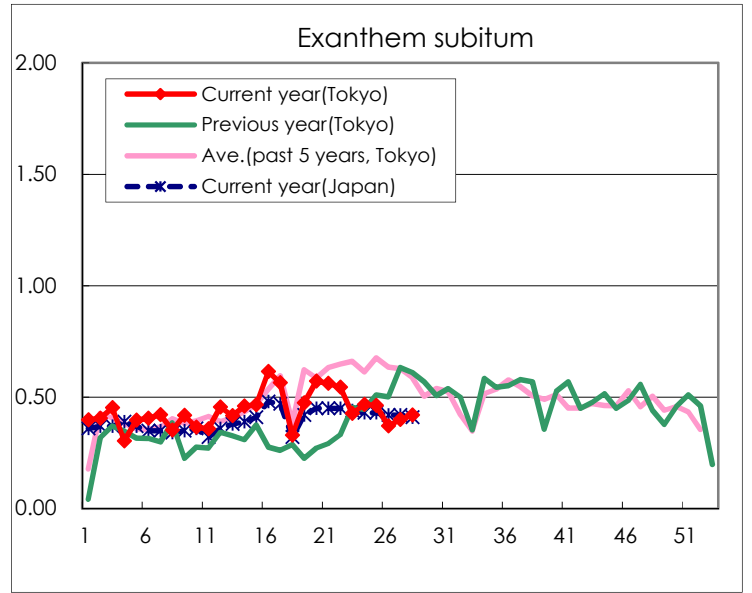
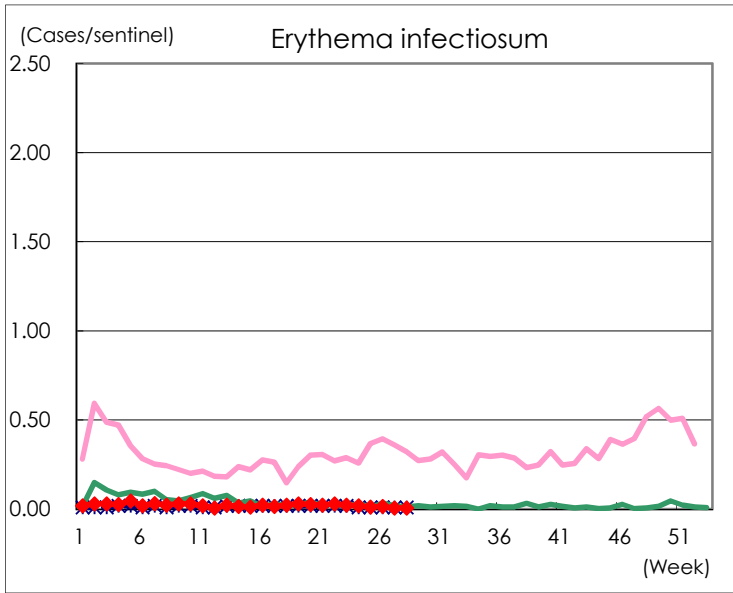
Number of patients with the diseases to be reported
by the designated clinics and hospitals

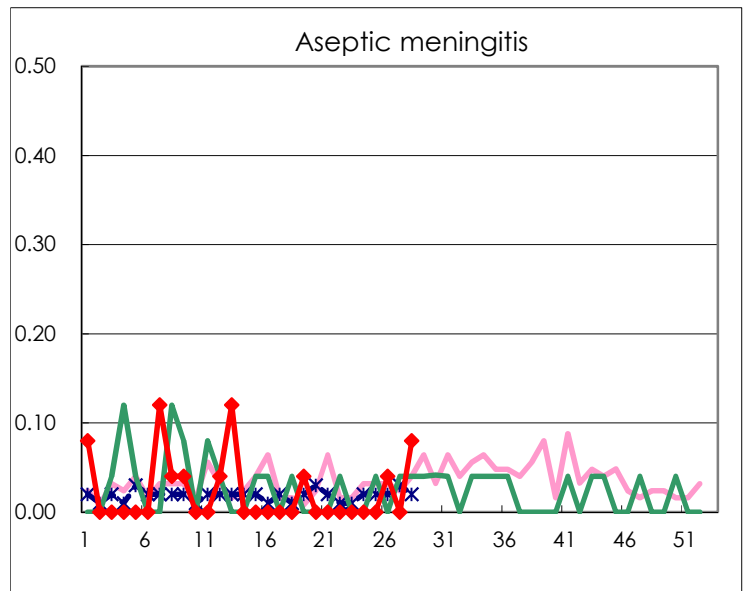
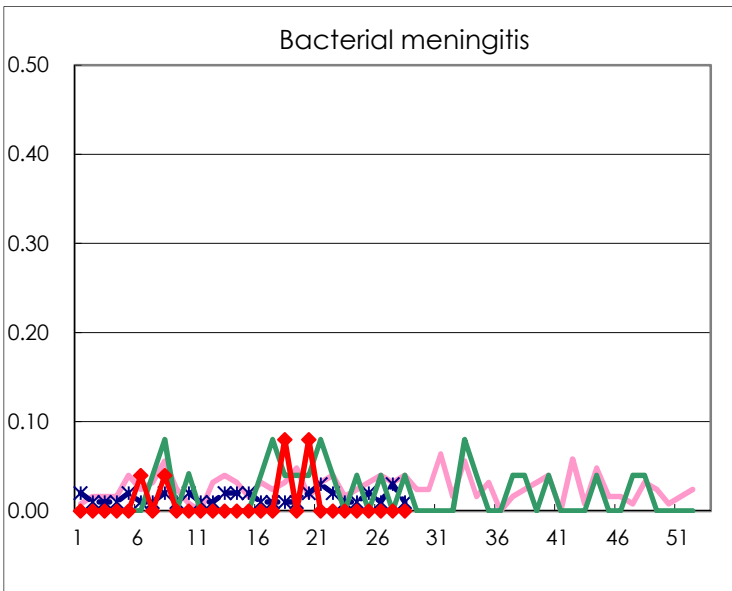
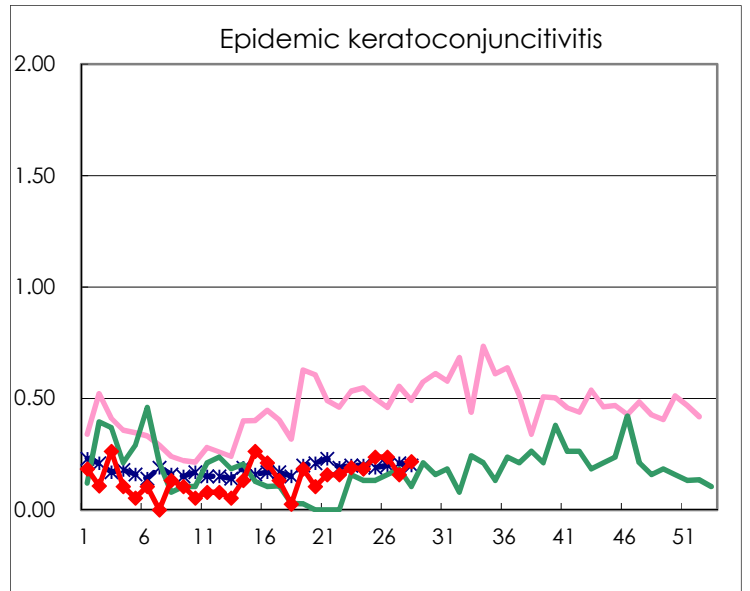
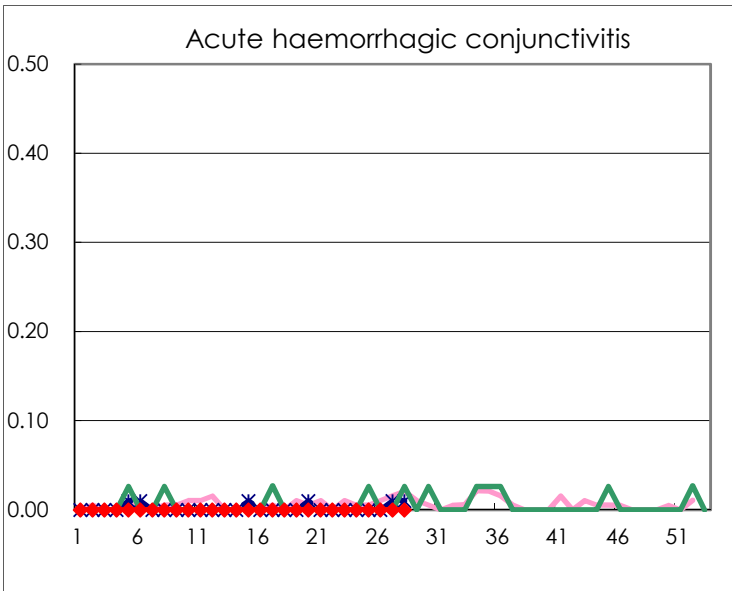
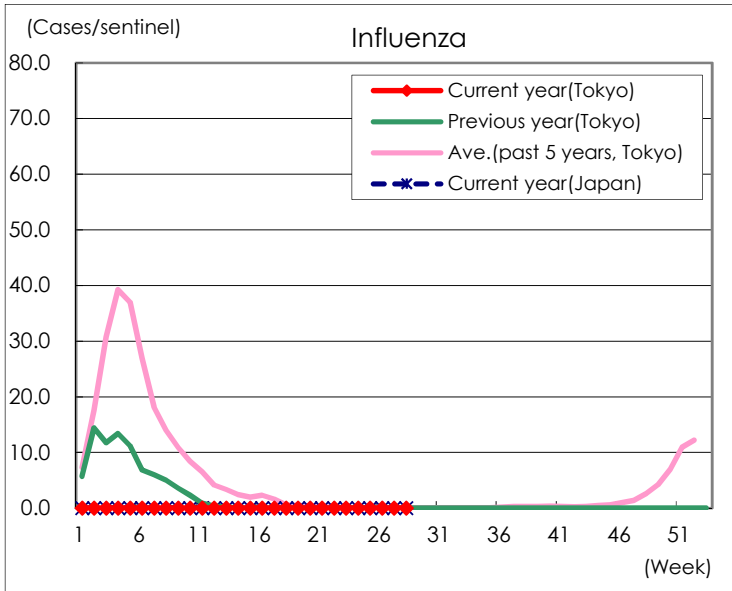
Diseases	Tokyo				
	25th	26th	27th	28th	/sentinel
Respiratory syncytial virus infection	1,238	1,581	2,022	2,295	8.93
Pharyngoconjunctival fever	48	66	67	48	0.19
Group A streptococcal pharyngitis	94	67	92	93	0.36
Infectious gastroenteritis	1,000	956	911	898	3.49
Chickenpox	21	23	17	14	0.05
Hand, foot, and mouth disease	18	22	37	21	0.08
Erythema infectiosum	3	4	2	2	0.01
Exanthem subitum	120	96	103	108	0.42
Herpangina	19	30	26	29	0.11
Mumps	16	15	19	16	0.06
Kawasaki disease	6	4	3	4	0.02
Cold with exanthems	12	3	8	6	0.02
Influenza					
Acute hemorrhagic conjunctivitis					
Epidemic keratoconjunctivitis	9	9	6	8	0.22
Bacterial meningitis					
Aseptic meningitis		1		2	0.08
Mycoplasma pneumonia			1		
Chlamydial pneumonia (excluding psittacosis)					
Infectious gastroenteritis (only by Rotavirus)					
Influenza-Associated Hospitalizations					

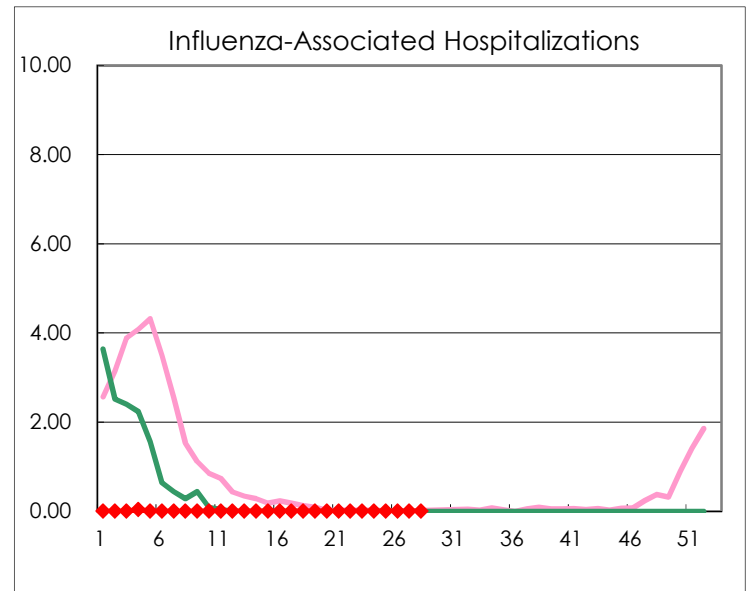
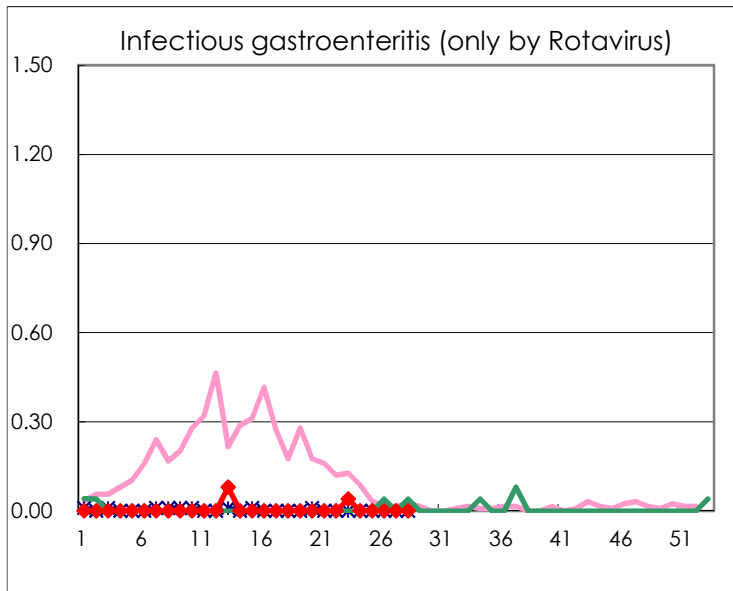
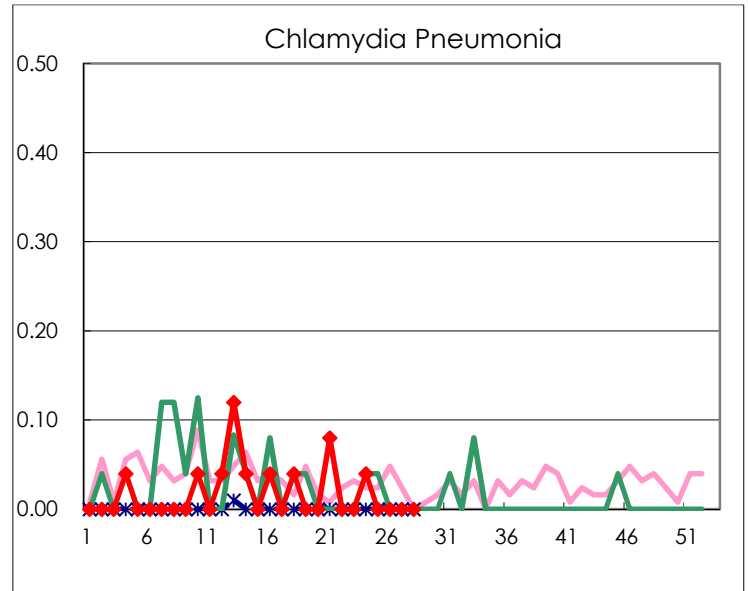
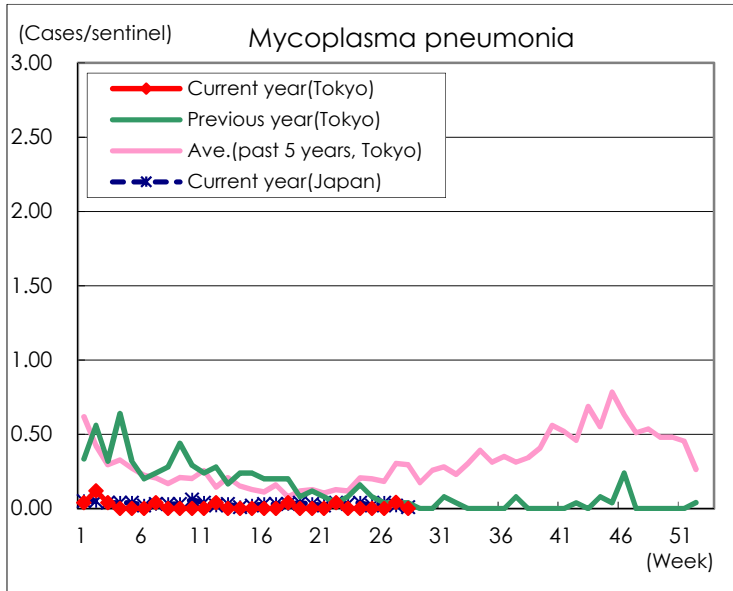
(Blank means 0.)

Disease Trend Graph (weekly reported cases per sentinel in comparison)









Number of sentinel facilities for weekly reporting		
Types of sentinels	Number of sentinels	Sentinels having reported
Pediatric	264	257
Influenza	419	410
Ophthalmic	39	37
Specially-designated	25	25