
INFECTIOUS DISEASES WEEKLY REPORT

TOKYO IDWR

Tokyo Metropolitan Infectious Disease Surveillance Center

29 July 2021 / Number 29
(7/19 ~ 7/25)

Surveillance System in Tokyo, Japan

The infectious diseases which all physicians must report
All physicians must report to health centers the incidence of the diseases which are shown at page one. Health centers electronically report the individual cases to Tokyo Metropolitan Infectious Disease Surveillance Center.

The infectious diseases required to be reported by the sentinels
The numbers of patients who visit the sentinel clinics or hospitals during a week are reported to health centers in Tokyo. And they electronically report the numbers to Tokyo Metropolitan Infectious Disease Surveillance Center. We have about 500 sentinel clinics and hospitals in Tokyo.

Tokyo Metropolitan Institute of Public Health

TEL:81-3-3363-3213 FAX:81-3-5332-7365

e-mail:www@tokyo-eiken.go.jp

URL:idsc.tokyo-eiken.go.jp/

Number of patients with the diseases which all physicians must report

Category	Diseases	Tokyo					Japan	
		26th	27th	28th	29th	Cum 2021	29th	Cum 2021
I	Ebola hemorrhagic fever							
	Crimean-Congo hemorrhagic fever							
	Smallpox							
	South American hemorrhagic fever							
	Plague							
	Marburg disease							
	Lassa fever							
II	Acute poliomyelitis							
	Tuberculosis	59	45	41	23	1,231	178	8,636
	Diphtheria							
	Severe Acute Respiratory Syndrome(SARS)							
	Middle East Respiratory Syndrome (MERS)							
	Avian influenza H5N1							
	Avian influenza H7N9							
III	Cholera							
	Shigellosis					2	1	5
	Enterohemorrhagic Escherichia coli infection	15	12	11	19	141	119	1,300
	Typhoid fever							
	Paratyphoid fever							
IV	Hepatitis E	1		2	1	76	2	281
	West Nile fever							
	Hepatitis A		1			10		40
	Echinococcosis					1		16
	Yellow fever							
	Psittacosis							5
	Omsk hemorrhagic fever							
	Relapsing fever						1	4
	Kyasanur forest disease							
	Q fever					1		1
	Rabies							
	Coccidioidomycosis							
	Monkeypox							
	Zika virus infection							
	Severe Fever with Thrombocytopenia Syndrome						1	71
	Hemorrhagic fever with renal syndrome							
	Western equine encephalitis							
	Tick-borne encephalitis							
	Anthrax							
	Chikungunya fever							
	Scrub typhus(Tsutsugamushi disease)					2	2	127
	Dengue fever							
	Eastern equine encephalitis							
	Avian influenza (excluding H5N1 and H7N9)							
	Nipah virus infection							
	Japanese spotted fever		1	1		3	6	204
	Japanese encephalitis							
	Hantavirus pulmonary syndrome							
	Herpes B virus infection							
	Glanders							
	Brucellosis							1
	Venezuelan equine encephalitis							
	Hendra virus infection							
Epidemic typhus								
Botulism					1		2	
Malaria			1	1	3		9	
Tularemia								
Lyme disease						4	13	
Lyssavirus infection(excluding rabies)								
Rift valley fever								
Melioidosis								
Legionellosis	2	1	9	7	63	87	970	
Leptospirosis					1	2	6	
Rocky mountain spotted fever								

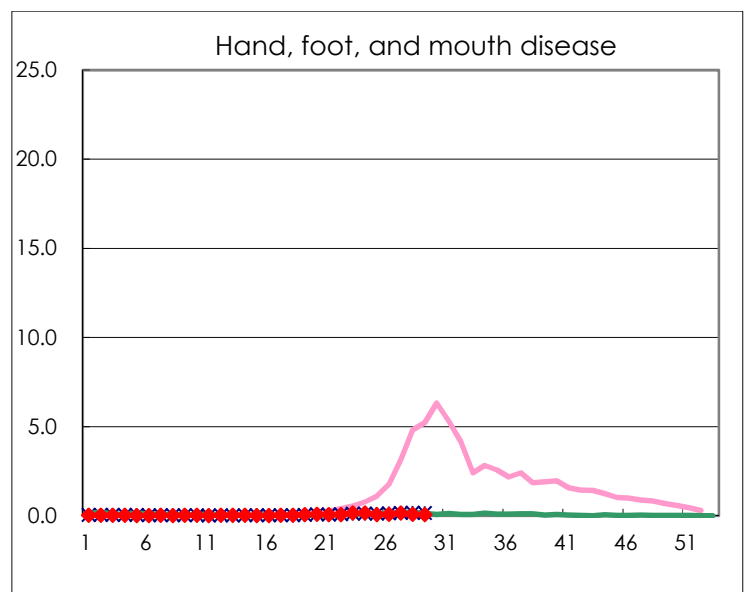
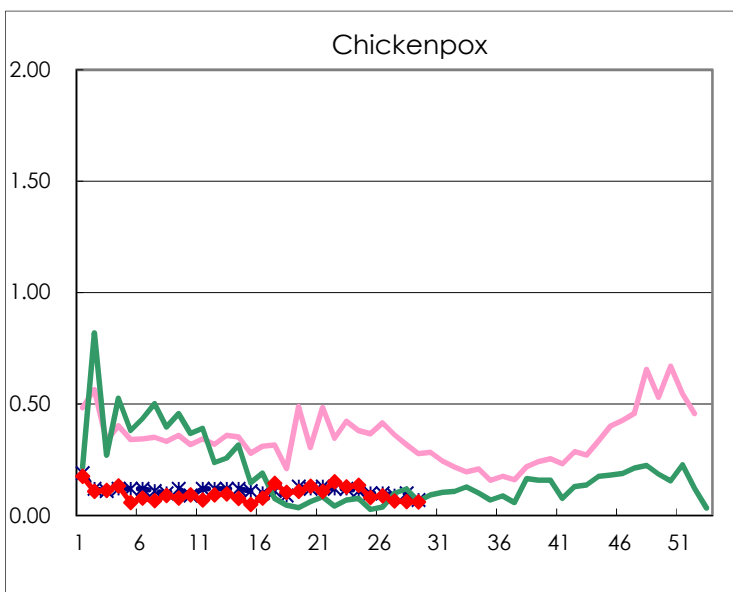
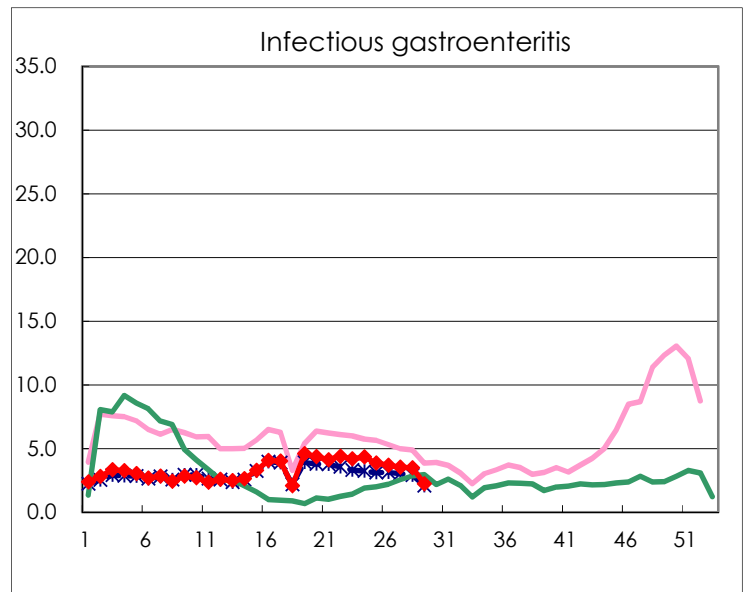
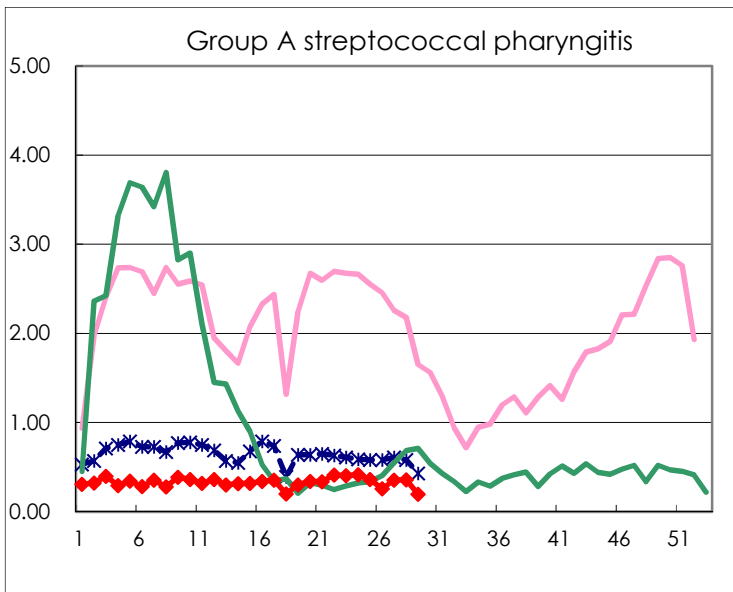
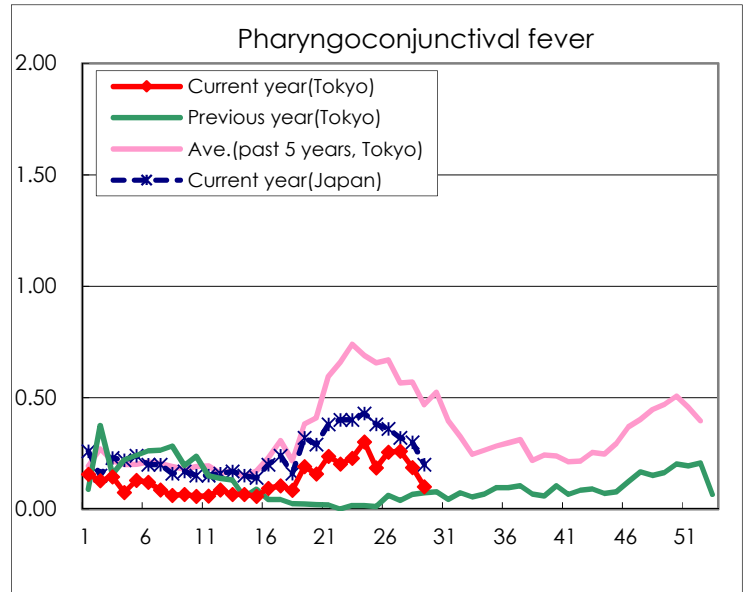
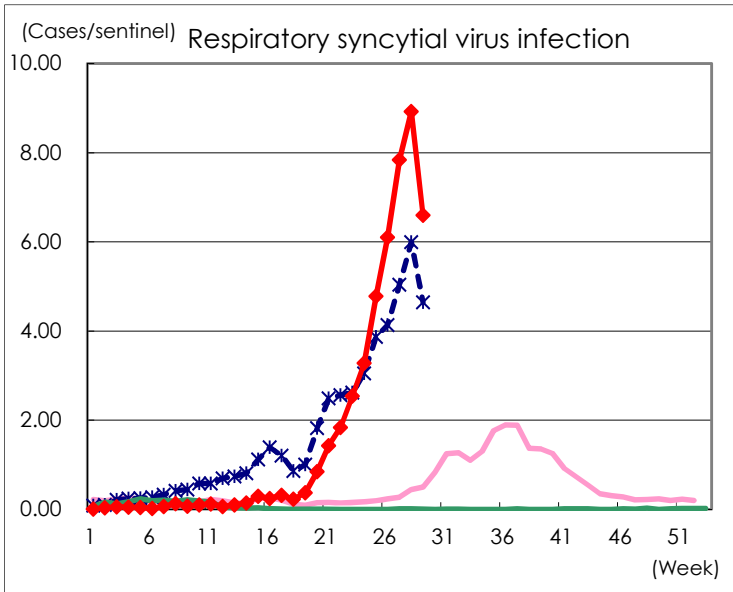
Category	Diseases	Tokyo					Japan	
		26th	27th	28th	29th	Cum 2021	29th	Cum 2021
V	Amebiasis	1	2	3	2	53	5	303
	Viral hepatitis(excluding hepatitis A and E)		2			28	1	104
	CRE infection	2	6	2	2	105	21	1,015
	Acute Flaccid Paralysis (excluding Acute poliomyelitis)					2		10
	Acute encephalitis(excluding JE and WNE)			2	1	11	6	197
	Cryptosporidiosis							3
	Creutzfeldt-Jakob disease	2				9	2	90
	Severe invasive streptococcal infections(TSLS)		1		2	37	7	352
	Acquired immunodeficiency syndrome (AIDS)	3	8	12	5	205	6	570
	Giardiasis		1			7	1	22
	Invasive <i>Haemophilus influenzae</i> disease					14	2	119
	Invasive meningococcal disease							1
	Invasive pneumococcal disease	2	4	3	2	73	8	780
	Varicella (limited to hospitalized case)			3	1	18	2	150
	Congenital rubella syndrome							1
	Syphilis	36	48	47	35	1,223	78	3,762
	Disseminated cryptococcosis					7	3	79
	Tetanus					2	1	46
	Vancomycin-resistant <i>S. aureus</i> infection							
	Vancomycin-resistant <i>Enterococcus</i> infection				1	5		73
	Pertussis				1	34	5	359
Rubella					1		7	
Measles							3	
MDRA infection							1	

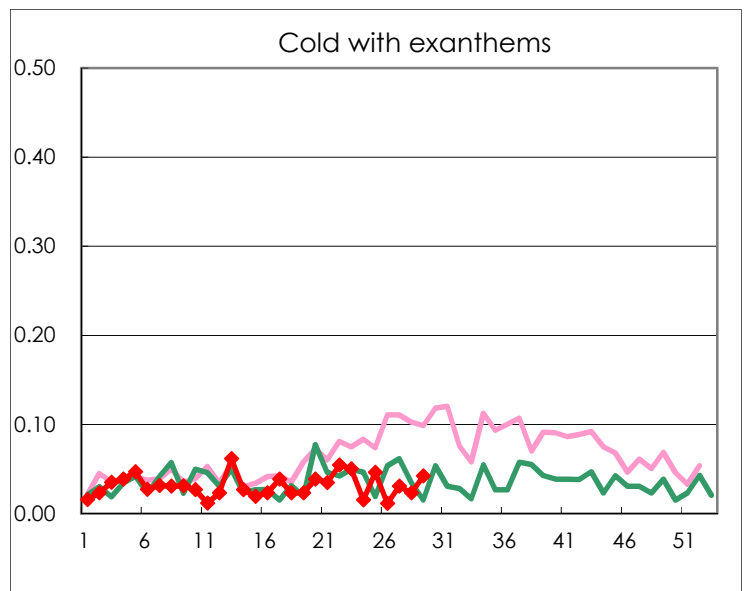
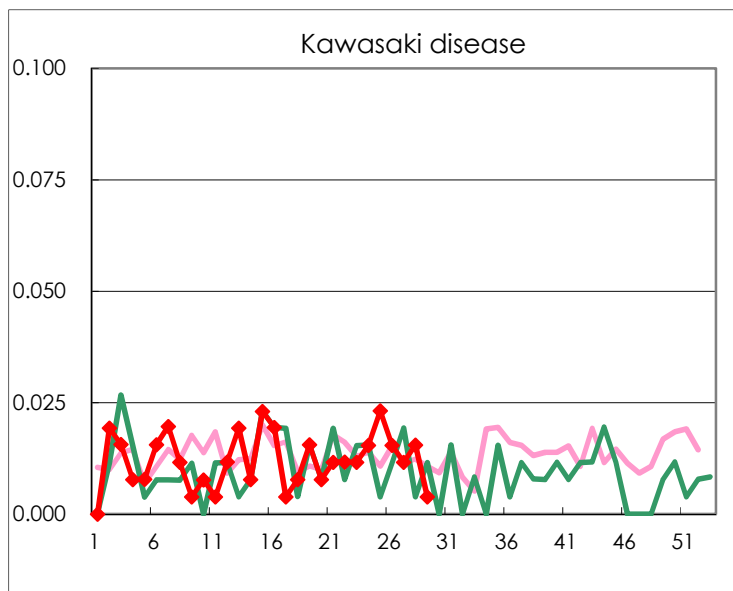
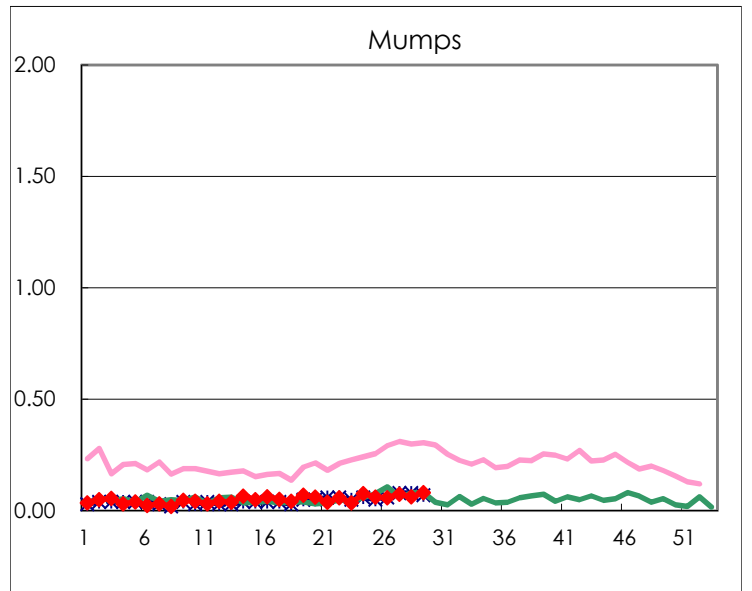
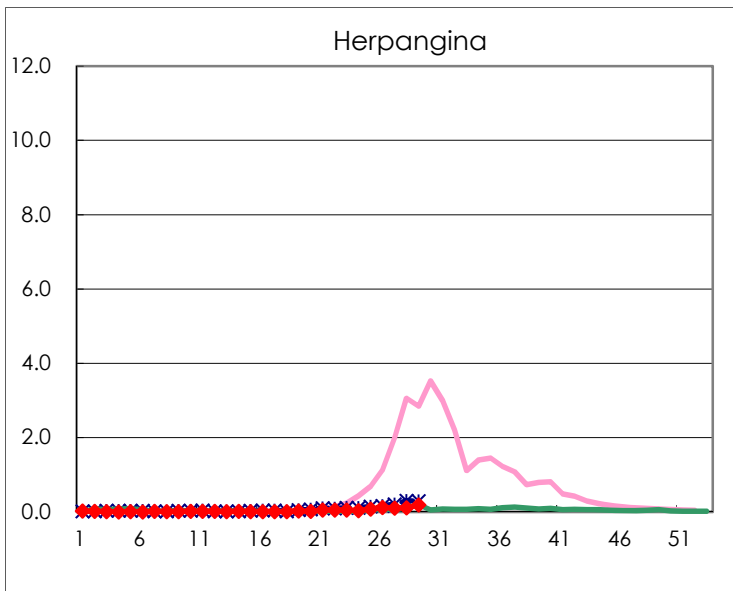
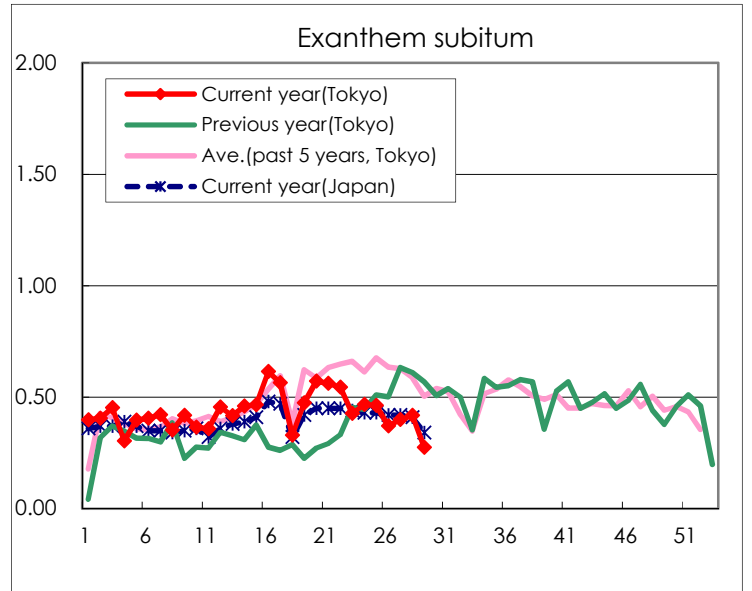
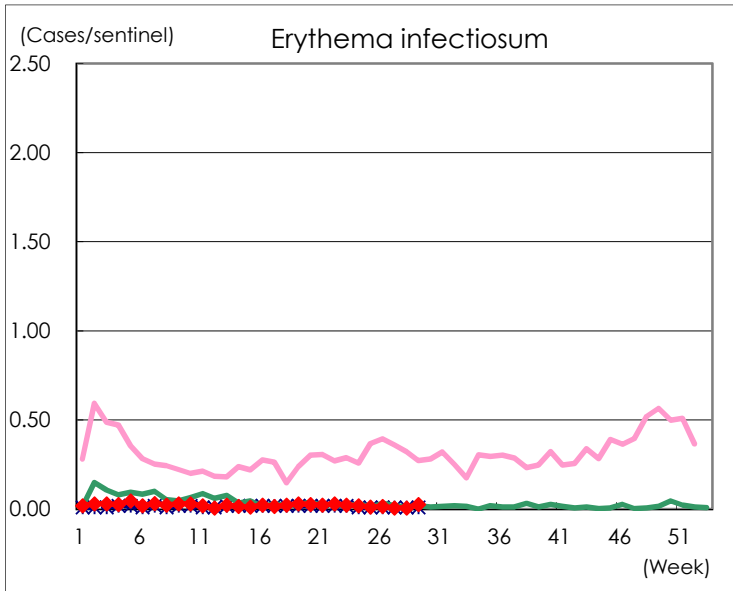
Number of patients with the diseases to be reported
by the designated clinics and hospitals

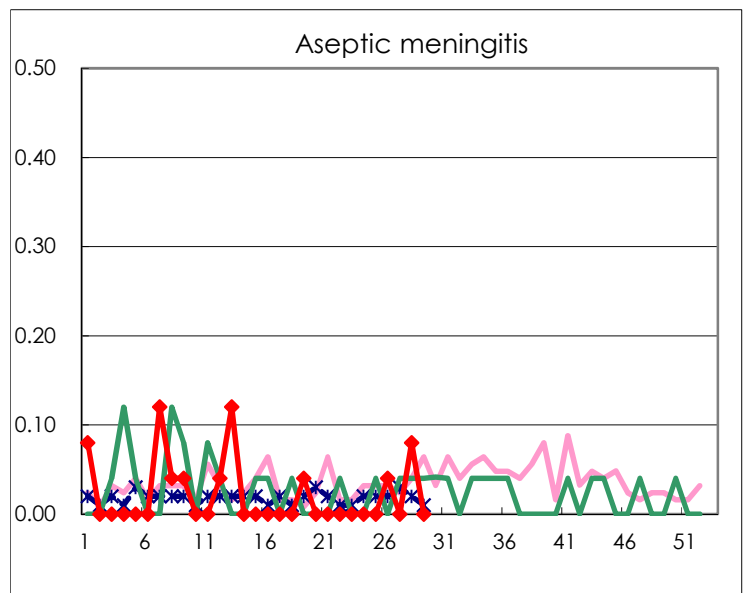
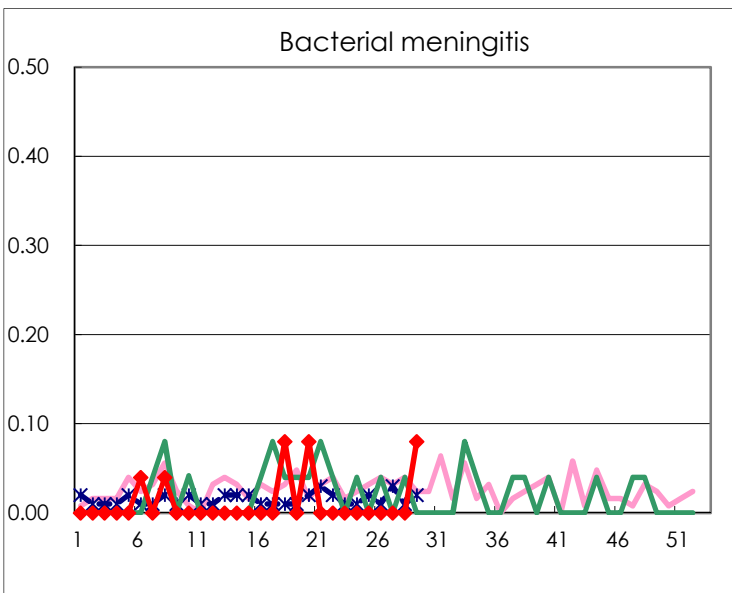
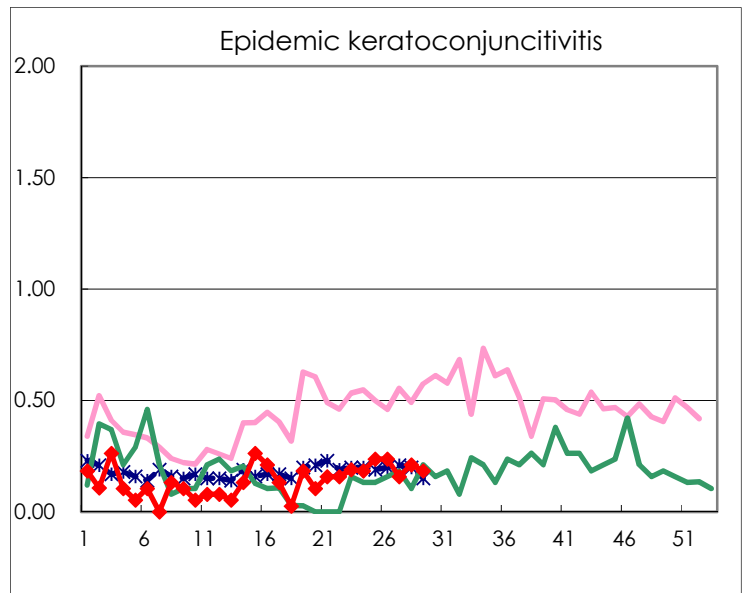
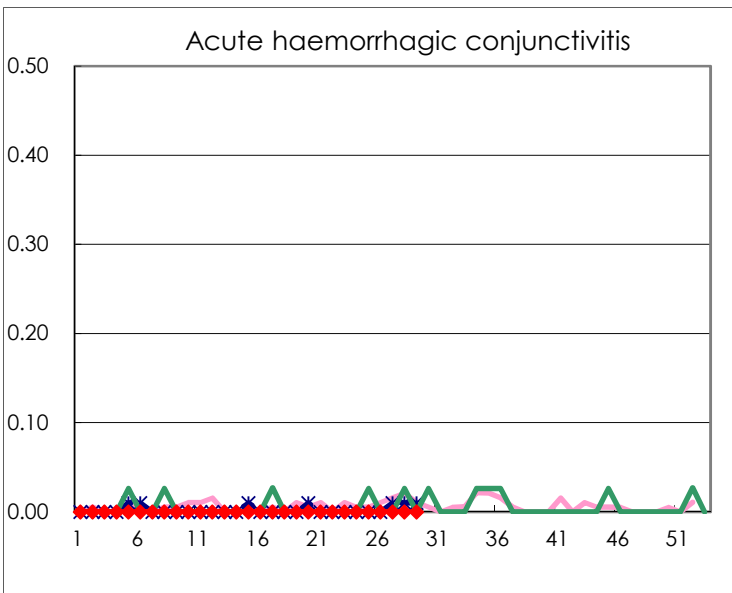
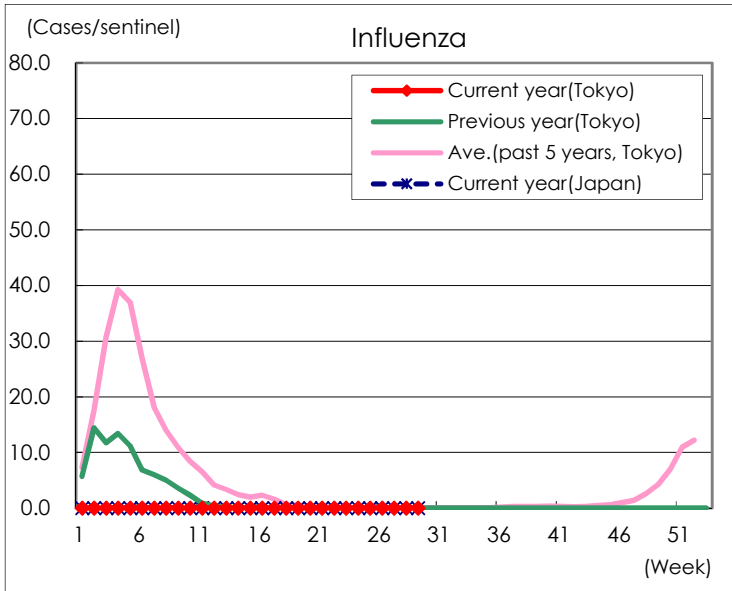
Diseases	Tokyo				
	26th	27th	28th	29th	/sentinel
Respiratory syncytial virus infection	1,581	2,022	2,302	1,709	6.60
Pharyngoconjunctival fever	66	67	48	26	0.10
Group A streptococcal pharyngitis	67	92	93	51	0.20
Infectious gastroenteritis	956	911	898	576	2.22
Chickenpox	23	17	16	16	0.06
Hand, foot, and mouth disease	22	37	21	14	0.05
Erythema infectiosum	4	2	2	7	0.03
Exanthem subitum	96	103	108	71	0.27
Herpangina	30	26	29	48	0.19
Mumps	15	19	16	21	0.08
Kawasaki disease	4	3	4	1	0.00
Cold with exanthems	3	8	6	11	0.04
Influenza					
Acute hemorrhagic conjunctivitis					
Epidemic keratoconjunctivitis	9	6	8	7	0.18
Bacterial meningitis				2	0.08
Aseptic meningitis	1		2		
Mycoplasma pneumonia		1			
Chlamydial pneumonia (excluding psittacosis)					
Infectious gastroenteritis (only by Rotavirus)					
Influenza-Associated Hospitalizations					

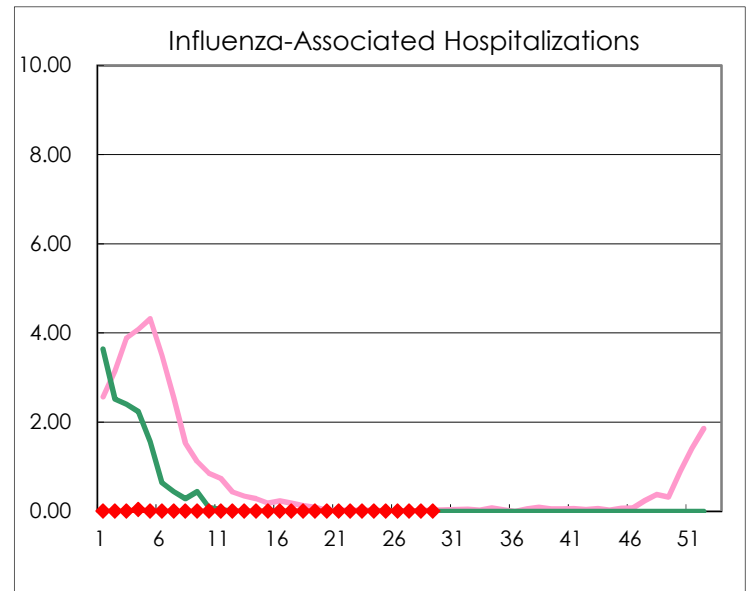
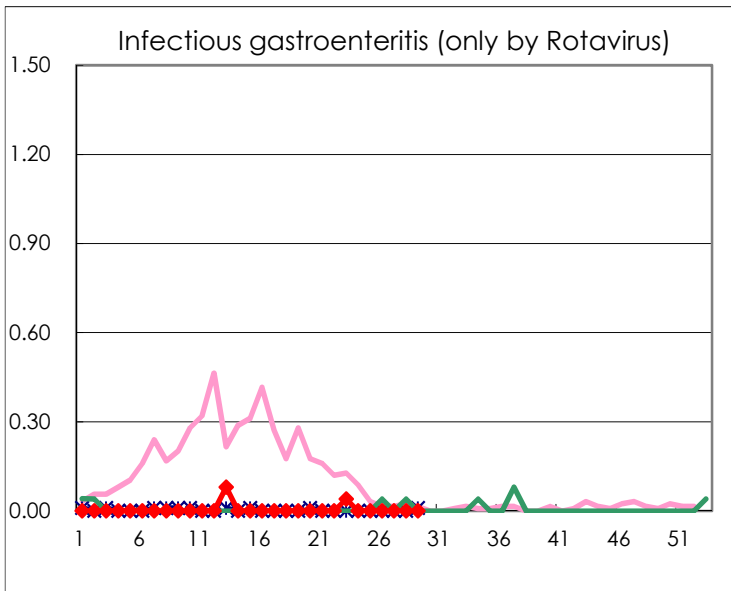
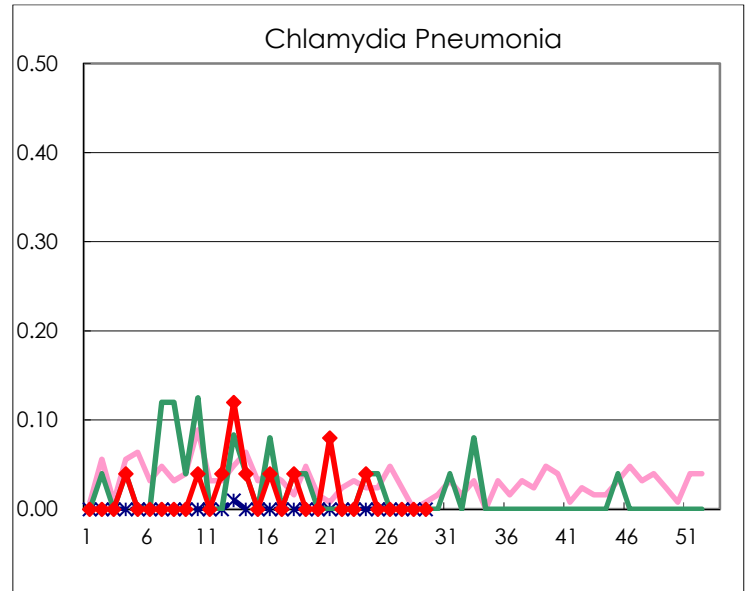
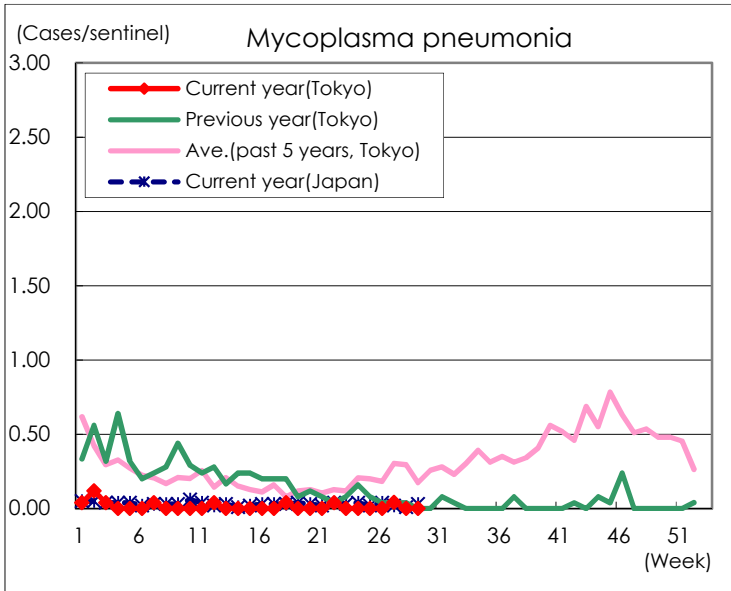
(Blank means 0.)

Disease Trend Graph (weekly reported cases per sentinel in comparison)









Number of sentinel facilities for weekly reporting		
Types of sentinels	Number of sentinels	Sentinels having reported
Pediatric	264	259
Influenza	419	412
Ophthalmic	39	38
Specially-designated	25	25