

12 August 2021 / Number 31
(8/2 ~ 8/8)

Surveillance System in Tokyo, Japan

The infectious diseases which all physicians must report
All physicians must report to health centers the incidence of the diseases which are shown at page one. Health centers electronically report the individual cases to Tokyo Metropolitan Infectious Disease Surveillance Center.

The infectious diseases required to be reported by the sentinels
The numbers of patients who visit the sentinel clinics or hospitals during a week are reported to health centers in Tokyo. And they electronically report the numbers to Tokyo Metropolitan Infectious Disease Surveillance Center. We have about 500 sentinel clinics and hospitals in Tokyo.

Tokyo Metropolitan Institute of Public Health

TEL:81-3-3363-3213 FAX:81-3-5332-7365

e-mail:www@tokyo-eiken.go.jp

URL:idsc.tokyo-eiken.go.jp/

Number of patients with the diseases which all physicians must report

Category	Diseases	Tokyo					Japan	
		28th	29th	30th	31st	Cum 2021	31st	Cum 2021
I	Ebola hemorrhagic fever							
	Crimean-Congo hemorrhagic fever							
	Smallpox							
	South American hemorrhagic fever							
	Plague							
	Marburg disease							
	Lassa fever							
II	Acute poliomyelitis							
	Tuberculosis	46	26	51	35	1,327	212	9,312
	Diphtheria							
	Severe Acute Respiratory Syndrome(SARS)							
	Middle East Respiratory Syndrome (MERS)							
	Avian influenza H5N1							
	Avian influenza H7N9							
III	Cholera							
	Shigellosis					2	1	6
	Enterohemorrhagic Escherichia coli infection	11	20	12	16	170	116	1,520
	Typhoid fever							
	Paratyphoid fever							
IV	Hepatitis E	2	1	1		77	7	295
	West Nile fever							
	Hepatitis A					10	1	44
	Echinococcosis					1	1	17
	Yellow fever							
	Psittacosis							5
	Omsk hemorrhagic fever							
	Relapsing fever						1	5
	Kyasanur forest disease							
	Q fever					1		1
	Rabies							
	Coccidioidomycosis							
	Monkeypox							
	Zika virus infection							
	Severe Fever with Thrombocytopenia Syndrome						1	76
	Hemorrhagic fever with renal syndrome							
	Western equine encephalitis							
	Tick-borne encephalitis							
	Anthrax							
	Chikungunya fever							
	Scrub typhus(Tsutsugamushi disease)					2	2	131
	Dengue fever							3
	Eastern equine encephalitis							
	Avian influenza (excluding H5N1 and H7N9)							
	Nipah virus infection							
	Japanese spotted fever	1				3	7	222
	Japanese encephalitis							
	Hantavirus pulmonary syndrome							
	Herpes B virus infection							
	Glanders							
	Brucellosis							1
	Venezuelan equine encephalitis							
	Hendra virus infection							
	Epidemic typhus							
Botulism					1		5	
Malaria	1	1	1		4	1	11	
Tularemia								
Lyme disease							14	
Lyssavirus infection(excluding rabies)								
Rift valley fever								
Melioidosis								
Legionellosis	9	7	6	2	71	26	1,077	
Leptospirosis					1		6	
Rocky mountain spotted fever								

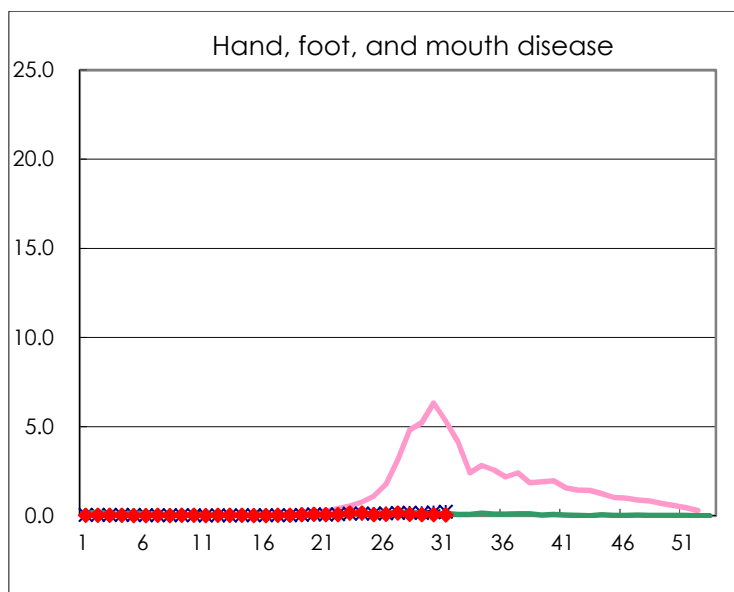
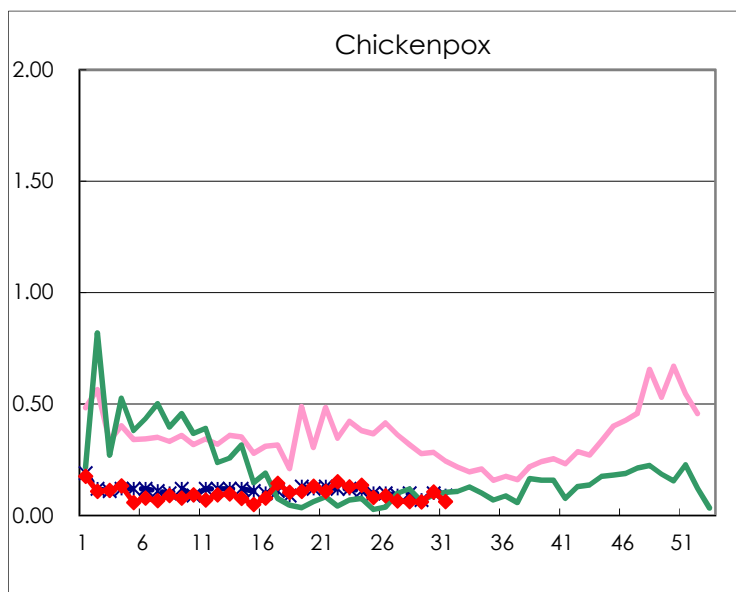
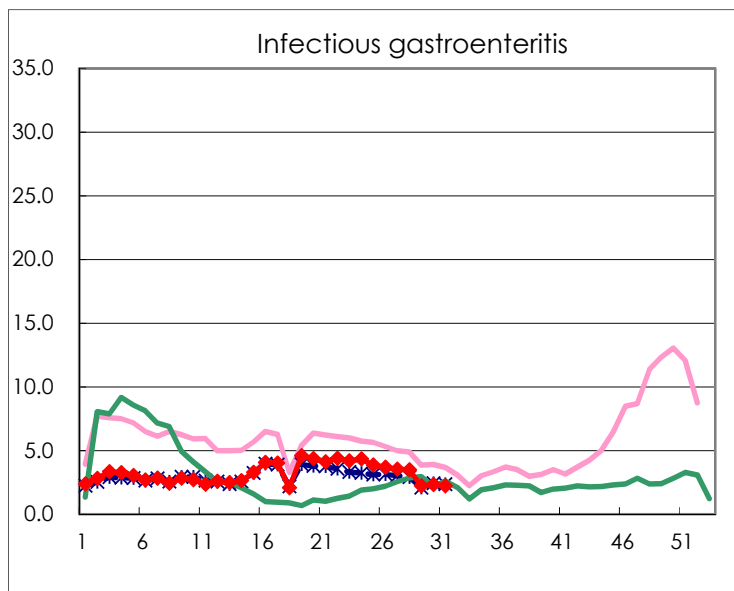
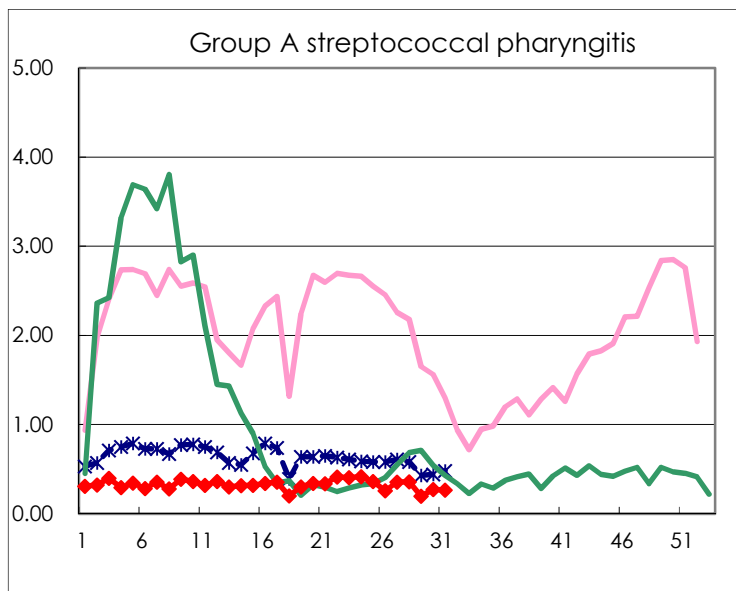
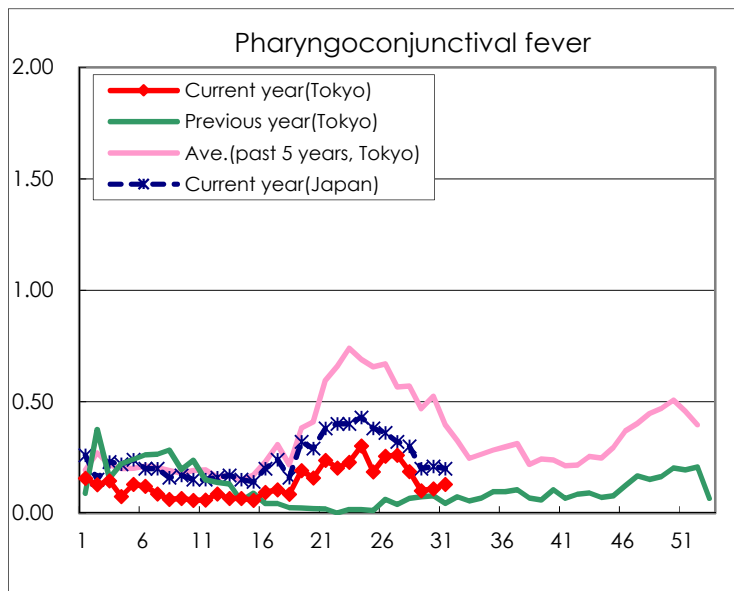
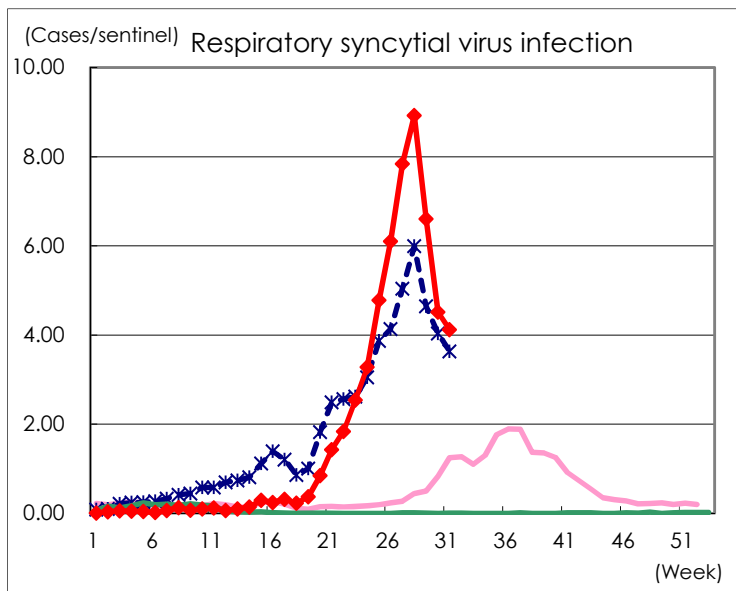
Category	Diseases	Tokyo					Japan	
		28th	29th	30th	31st	Cum 2021	31st	Cum 2021
V	Amebiasis	4	2	2	2	58	5	322
	Viral hepatitis(excluding hepatitis A and E)				2	30		109
	CRE infection	2	2	1	5	111	26	1,091
	Acute Flaccid Paralysis (excluding Acute poliomyelitis)					2		12
	Acute encephalitis(excluding JE and WNE)	2	1			11	5	210
	Cryptosporidiosis							3
	Creutzfeldt-Jakob disease					9	5	102
	Severe invasive streptococcal infections(TSLS)		2	1	2	40	5	373
	Acquired immunodeficiency syndrome (AIDS)	12	5	11	11	227	10	625
	Giardiasis			1		8		23
	Invasive <i>Haemophilus influenzae</i> disease					14	1	125
	Invasive meningococcal disease							1
	Invasive pneumococcal disease	3	2	1	2	76	11	823
	Varicella (limited to hospitalized case)	3	1	2		20	1	159
	Congenital rubella syndrome							1
	Syphilis	48	35	66	53	1,343	78	4,059
	Disseminated cryptococcosis				1	8	2	84
	Tetanus					2	1	51
	Vancomycin-resistant <i>S. aureus</i> infection							
	Vancomycin-resistant <i>Enterococcus</i> infection		1			5	1	77
Pertussis		1	1		35	6	374	
Rubella					1		7	
Measles							3	
MDRA infection							1	

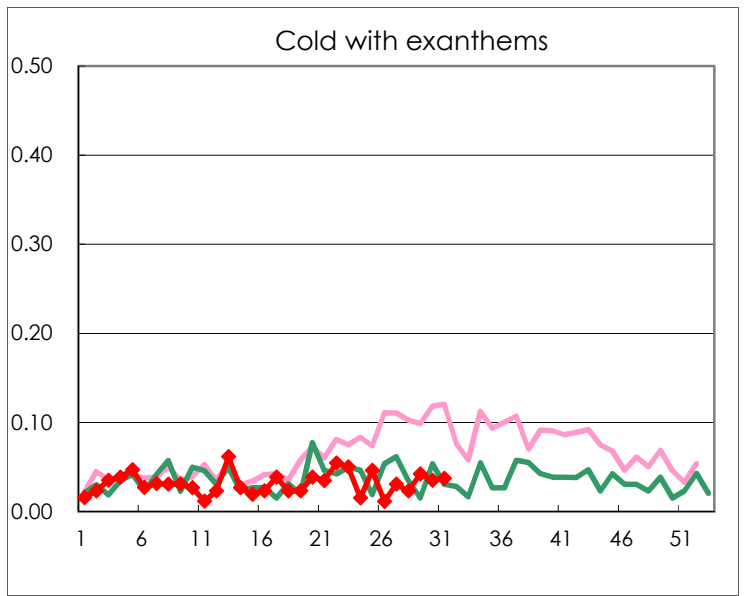
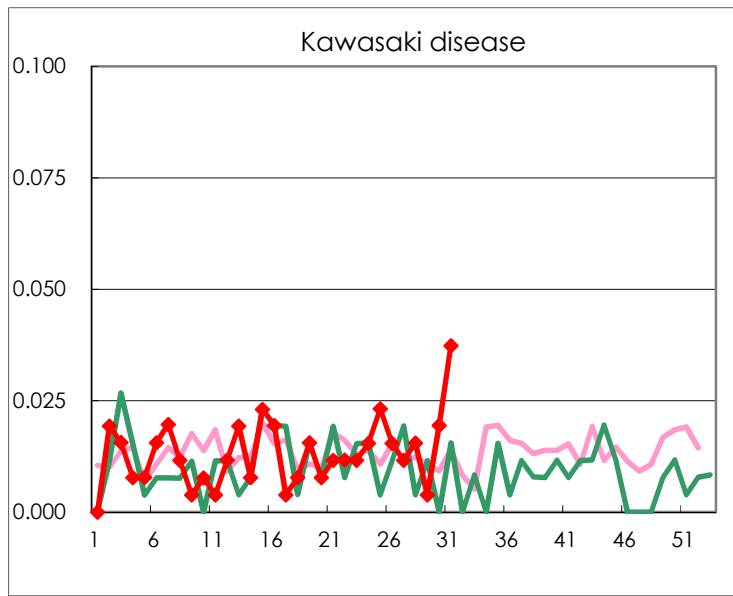
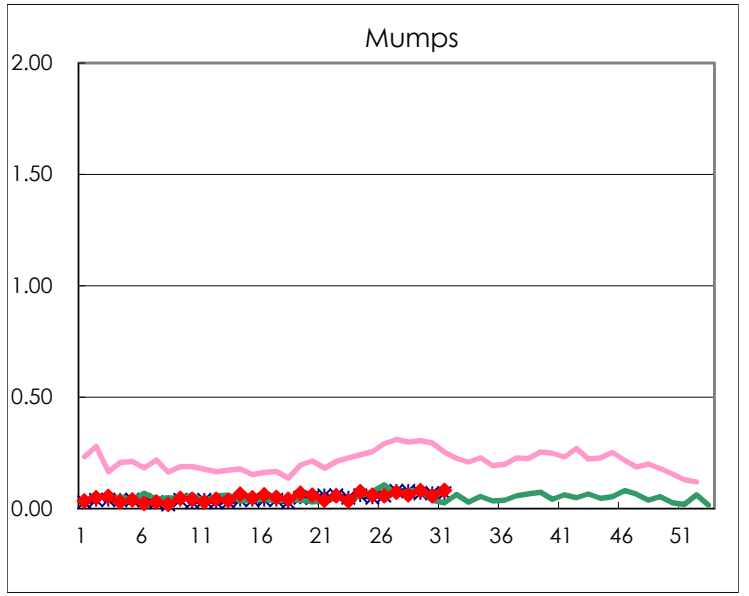
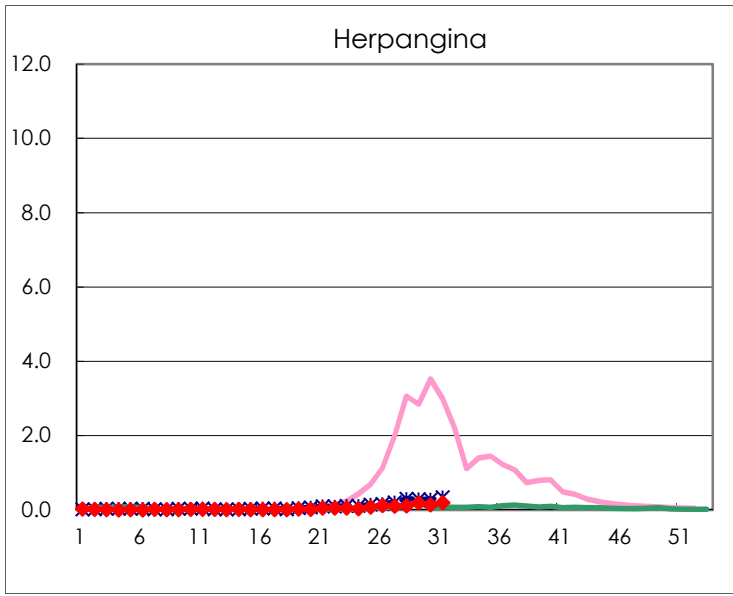
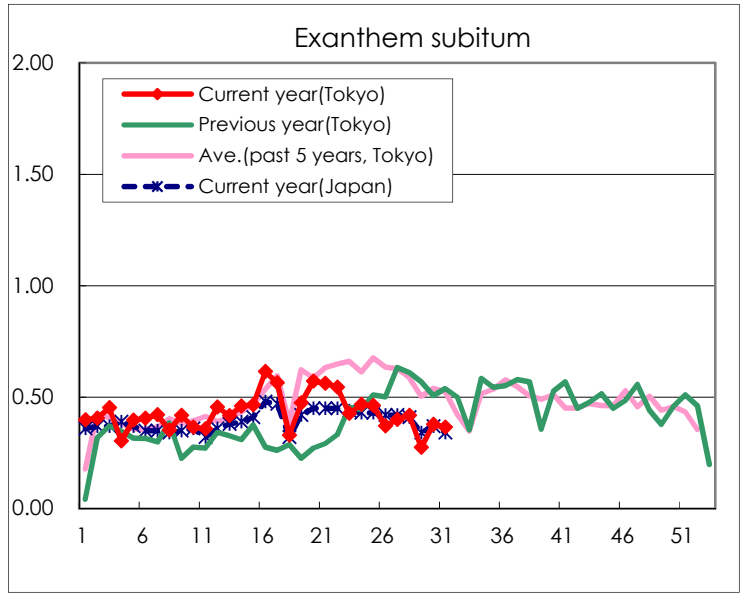
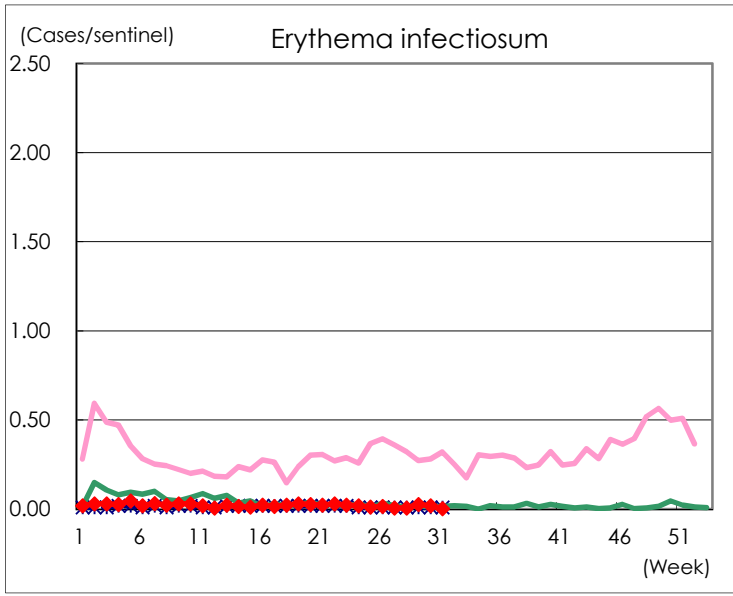
Number of patients with the diseases to be reported
by the designated clinics and hospitals

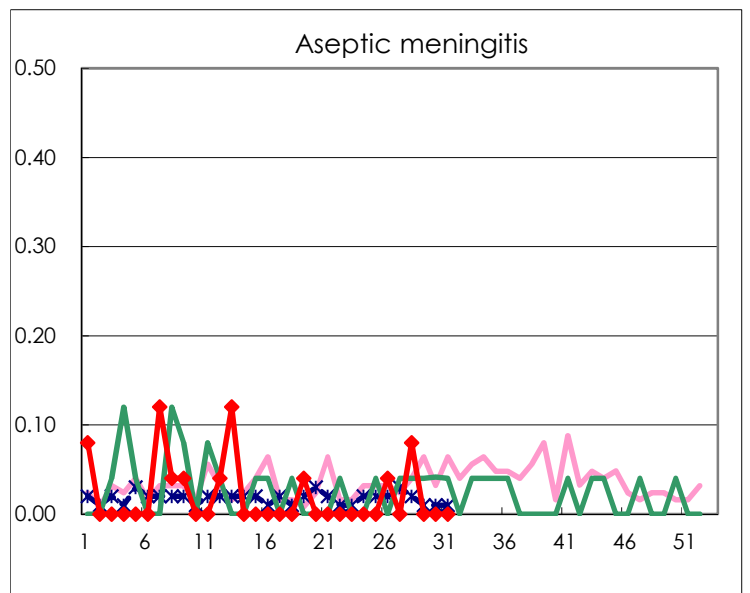
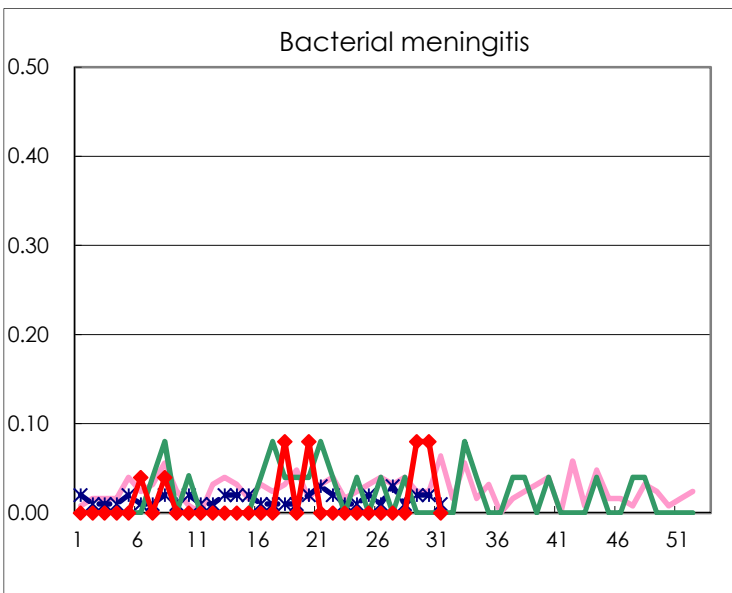
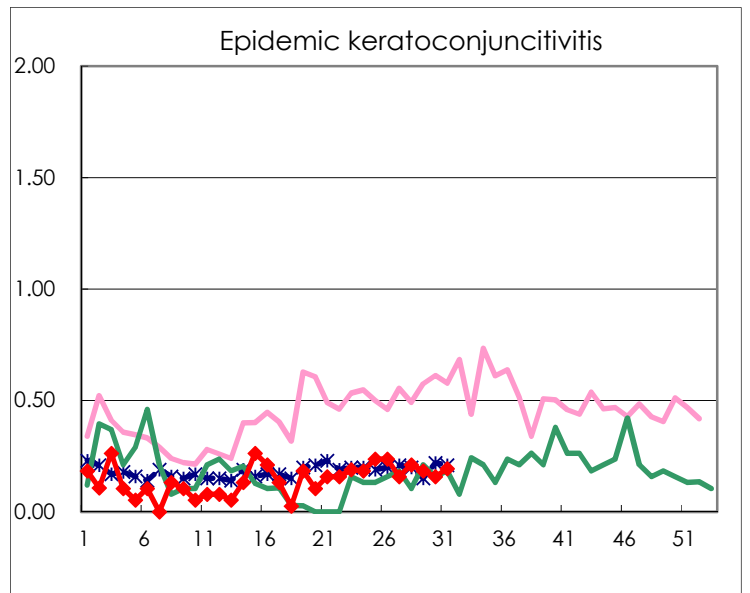
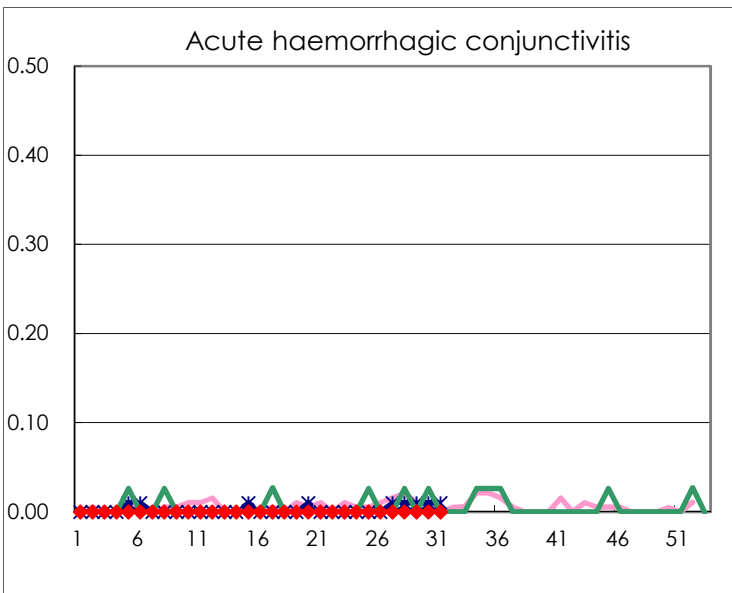
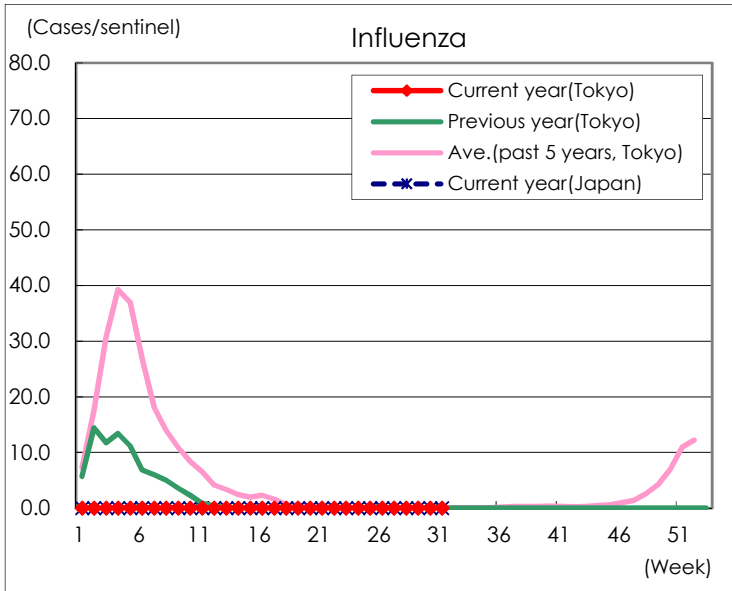
Diseases	Tokyo				
	28th	29th	30th	31st	/sentinel
Respiratory syncytial virus infection	2,302	1,710	1,160	993	4.12
Pharyngoconjunctival fever	48	26	28	31	0.13
Group A streptococcal pharyngitis	93	51	70	64	0.27
Infectious gastroenteritis	898	576	596	536	2.22
Chickenpox	16	16	27	15	0.06
Hand, foot, and mouth disease	21	14	15	12	0.05
Erythema infectiosum	2	7	5	1	0.00
Exanthem subitum	108	71	97	88	0.37
Herpangina	29	48	36	47	0.20
Mumps	16	21	15	20	0.08
Kawasaki disease	4	1	5	9	0.04
Cold with exanthems	6	11	9	9	0.04
Influenza			1		
Acute hemorrhagic conjunctivitis					
Epidemic keratoconjunctivitis	8	7	6	7	0.19
Bacterial meningitis		2	2		
Aseptic meningitis	2				
<i>Mycoplasma pneumoniae</i>				2	0.08
Chlamydial pneumonia (excluding psittacosis)					
Infectious gastroenteritis (only by Rotavirus)					
Influenza-Associated Hospitalizations					

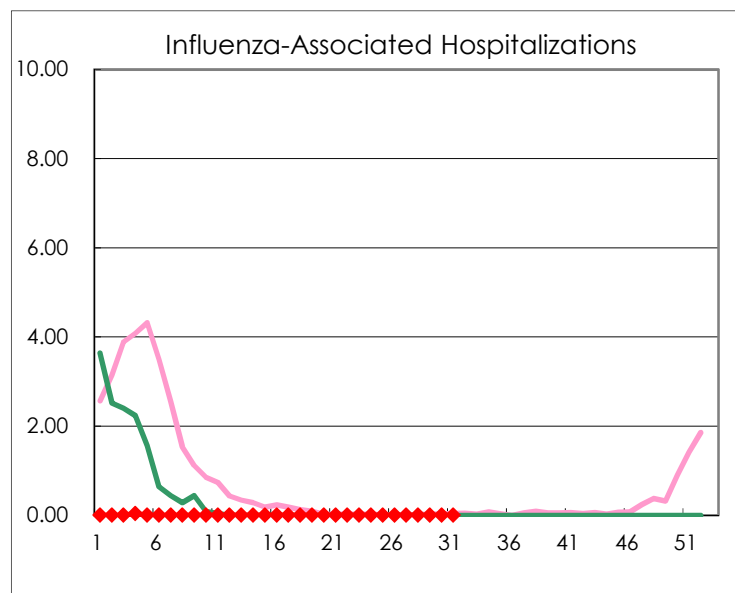
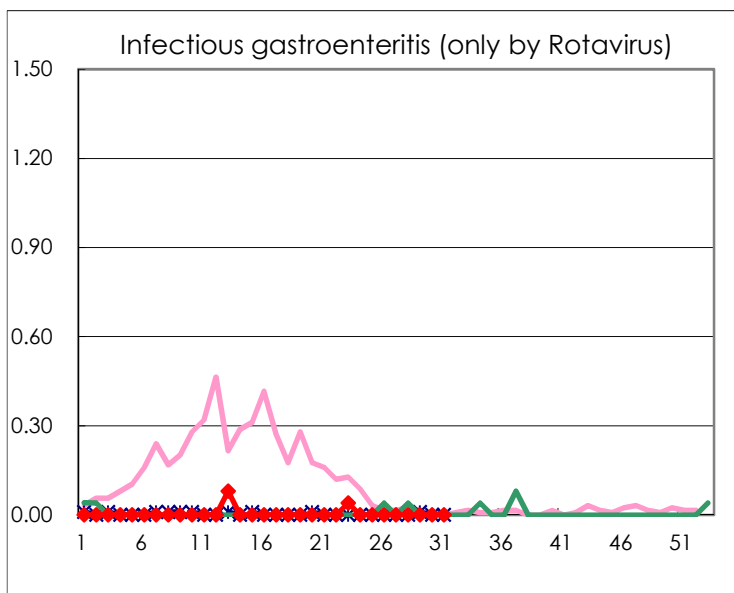
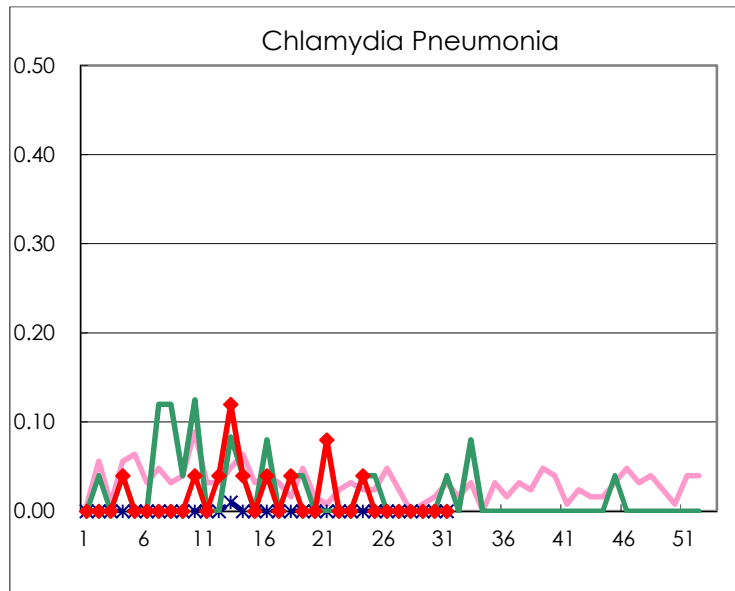
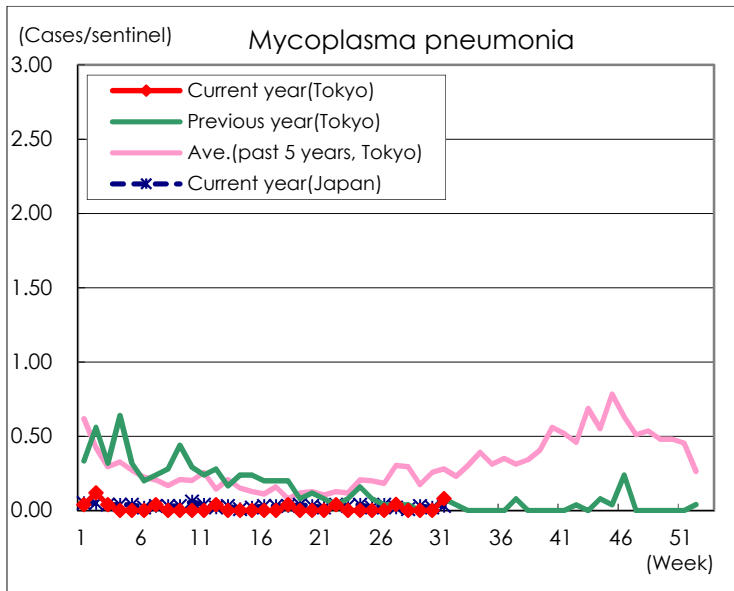
(Blank means 0.)

Disease Trend Graph (weekly reported cases per sentinel in comparison)









Number of sentinel facilities for weekly reporting		
Types of sentinels	Number of sentinels	Sentinels having reported
Pediatric	264	241
Influenza	419	382
Ophthalmic	39	36
Specially-designated	25	25