

---

INFECTIOUS DISEASES WEEKLY REPORT

# TOKYO IDWR

Tokyo Metropolitan Infectious Disease Surveillance Center

**26 August 2021 / Number 33**  
**( 8/16 ~ 8/22 )**

## Surveillance System in Tokyo, Japan

The infectious diseases which all physicians must report  
All physicians must report to health centers the incidence of the diseases which are shown at page one. Health centers electronically report the individual cases to Tokyo Metropolitan Infectious Disease Surveillance Center.

The infectious diseases required to be reported by the sentinels  
The numbers of patients who visit the sentinel clinics or hospitals during a week are reported to health centers in Tokyo. And they electronically report the numbers to Tokyo Metropolitan Infectious Disease Surveillance Center. We have about 500 sentinel clinics and hospitals in Tokyo.

Tokyo Metropolitan Institute of Public Health

TEL:81-3-3363-3213 FAX:81-3-5332-7365

e-mail:[www@tokyo-eiken.go.jp](mailto:www@tokyo-eiken.go.jp)

URL:[idsc.tokyo-eiken.go.jp/](http://idsc.tokyo-eiken.go.jp/)

---

Number of patients with the diseases which all physicians must report

Category	Diseases	Tokyo					Japan	
		30th	31st	32nd	33rd	Cum 2021	33rd	Cum 2021
I	Ebola hemorrhagic fever							
	Crimean-Congo hemorrhagic fever							
	Smallpox							
	South American hemorrhagic fever							
	Plague							
	Marburg disease							
	Lassa fever							
II	Acute poliomyelitis							
	Tuberculosis	54	40	30	29	1,395	197	9,810
	Diphtheria							
	Severe Acute Respiratory Syndrome(SARS)							
	Middle East Respiratory Syndrome (MERS)							
	Avian influenza H5N1							
	Avian influenza H7N9							
III	Cholera							
	Shigellosis					2		7
	Enterohemorrhagic Escherichia coli infection	12	16	6	8	184	109	1,769
	Typhoid fever							
	Paratyphoid fever							
IV	Hepatitis E	1		2		79	1	302
	West Nile fever							
	Hepatitis A					10	1	46
	Echinococcosis					1		17
	Yellow fever							
	Psittacosis							7
	Omsk hemorrhagic fever							
	Relapsing fever							5
	Kyasanur forest disease							
	Q fever					1		1
	Rabies							
	Coccidioidomycosis							
	Monkeypox							
	Zika virus infection							
	Severe Fever with Thrombocytopenia Syndrome						2	80
	Hemorrhagic fever with renal syndrome							
	Western equine encephalitis							
	Tick-borne encephalitis							
	Anthrax							
	Chikungunya fever							
	Scrub typhus(Tsutsugamushi disease)					2		134
	Dengue fever							3
	Eastern equine encephalitis							
	Avian influenza (excluding H5N1 and H7N9)							
	Nipah virus infection							
	Japanese spotted fever					3	4	238
	Japanese encephalitis							
	Hantavirus pulmonary syndrome							
	Herpes B virus infection							
	Glanders							
	Brucellosis							1
	Venezuelan equine encephalitis							
	Hendra virus infection							
	Epidemic typhus							
Botulism					1		5	
Malaria	1		1		5		13	
Tularemia								
Lyme disease						1	15	
Lyssavirus infection(excluding rabies)								
Rift valley fever								
Melioidosis								
Legionellosis	6	2	4	5	80	38	1,157	
Leptospirosis					1		8	
Rocky mountain spotted fever								

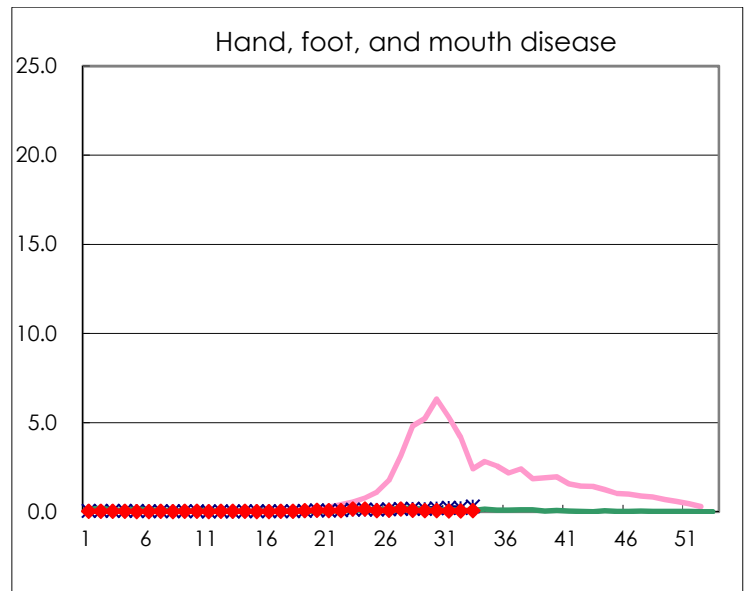
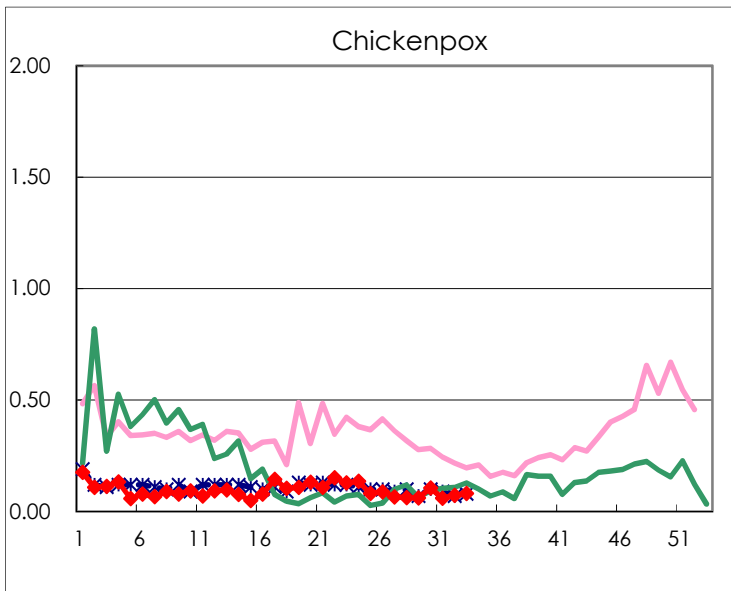
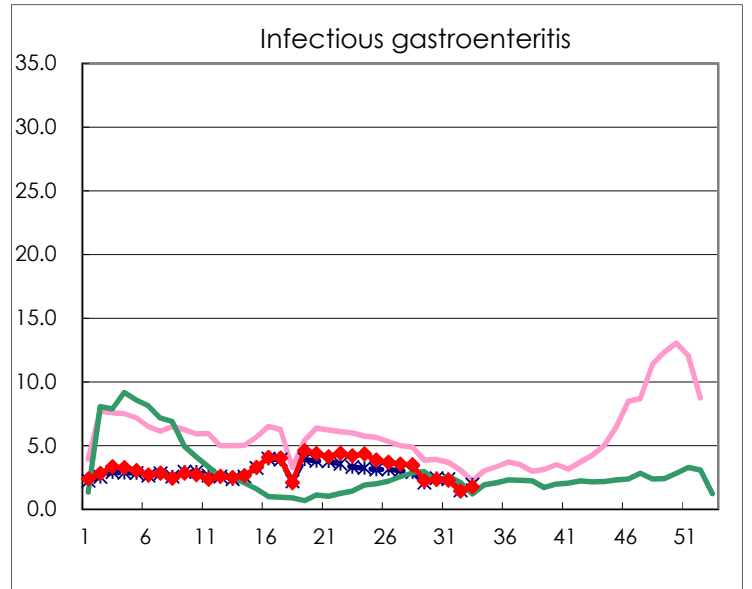
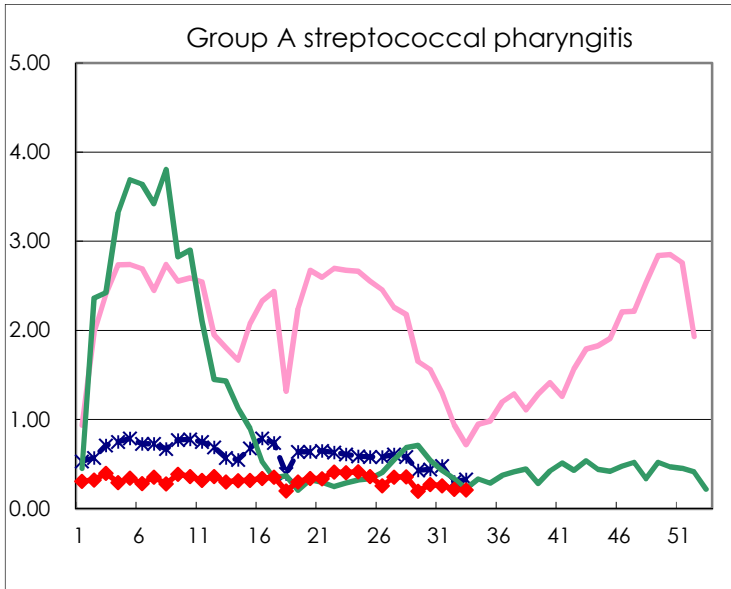
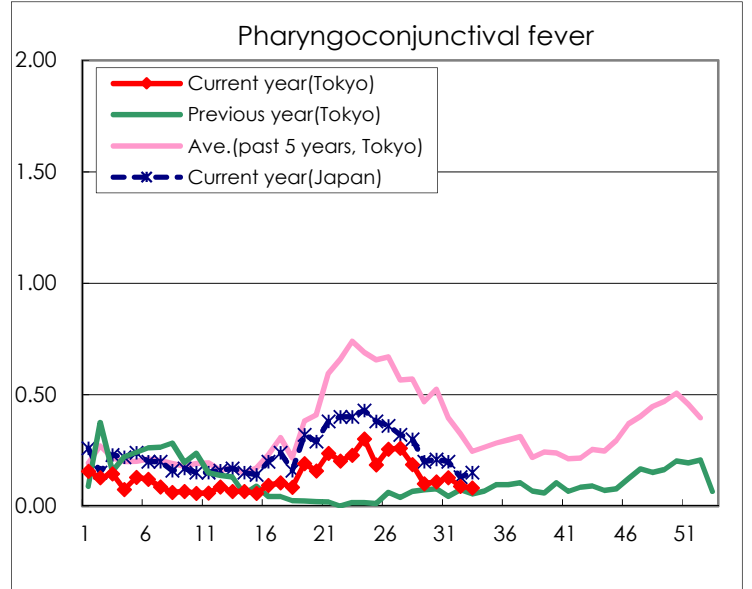
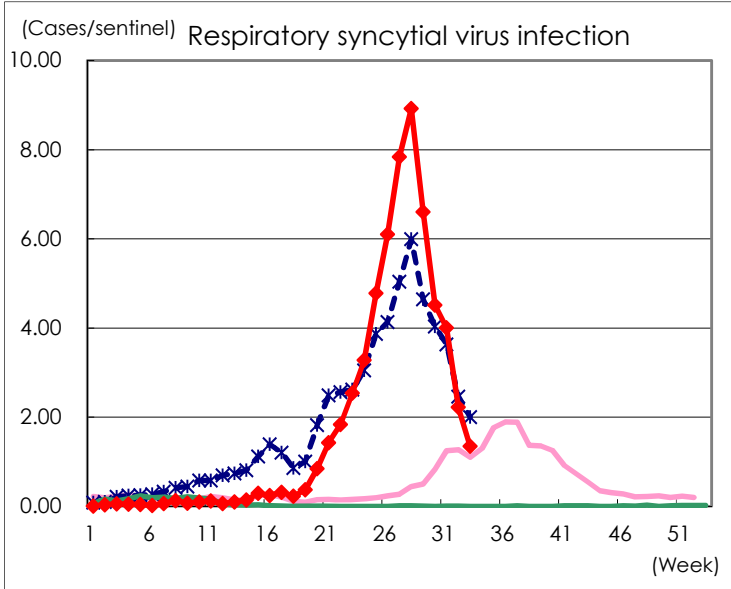
Category	Diseases	Tokyo					Japan	
		30th	31st	32nd	33rd	Cum 2021	33rd	Cum 2021
V	Amebiasis	2	2	3	2	63	5	342
	Viral hepatitis(excluding hepatitis A and E)		2	1		31	5	117
	CRE infection	1	6	4	2	118	11	1,154
	Acute Flaccid Paralysis (excluding Acute poliomyelitis)					2	1	13
	Acute encephalitis(excluding JE and WNE)				2	13	4	218
	Cryptosporidiosis							3
	Creutzfeldt-Jakob disease					9	1	111
	Severe invasive streptococcal infections(TSLS)	1	2		3	43	4	383
	Acquired immunodeficiency syndrome (AIDS)	12	11		6	234	6	650
	Giardiasis	1				8		23
	Invasive <i>Haemophilus influenzae</i> disease					14	1	130
	Invasive meningococcal disease							2
	Invasive pneumococcal disease	1	2	3	5	84	15	876
	Varicella (limited to hospitalized case)	2		1		21	3	170
	Congenital rubella syndrome							1
	Syphilis	66	57	50	38	1,437	100	4,349
	Disseminated cryptococcosis		1			8	2	86
	Tetanus					2	3	58
	Vancomycin-resistant <i>S. aureus</i> infection							
	Vancomycin-resistant <i>Enterococcus</i> infection			1	1	7		81
	Pertussis	1			1	36	7	394
Rubella					1		7	
Measles							3	
MDRA infection							2	

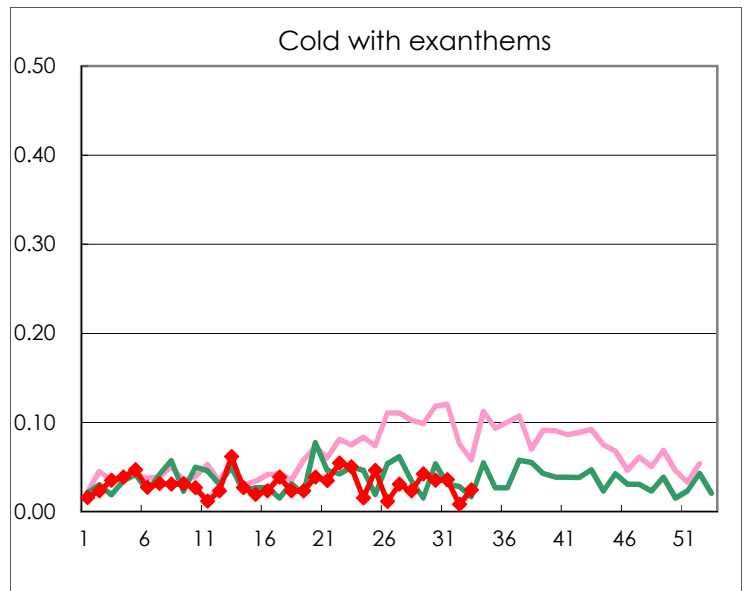
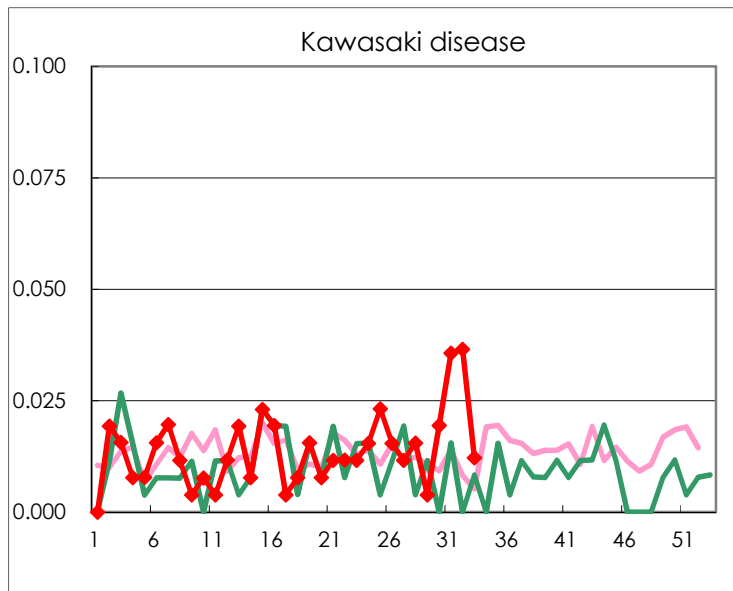
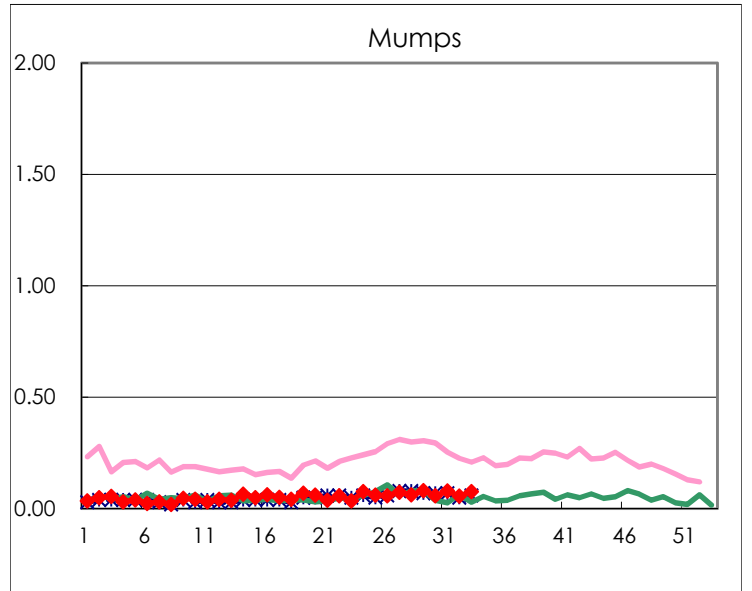
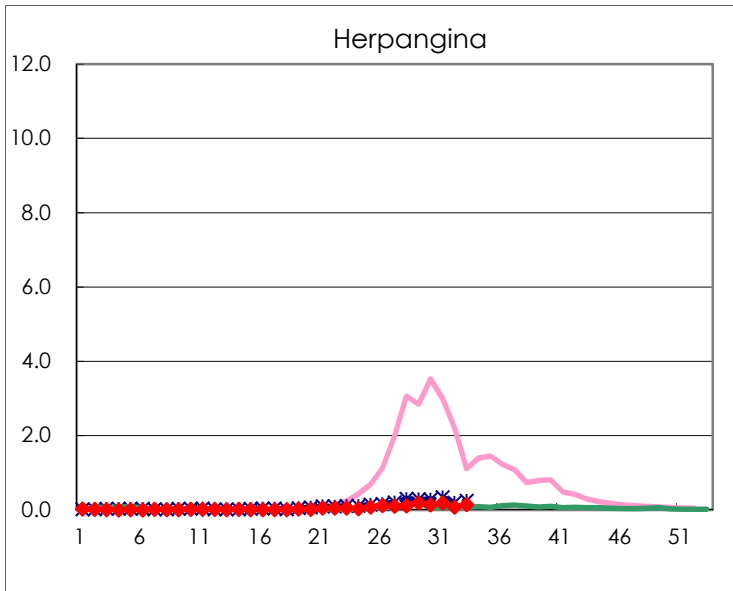
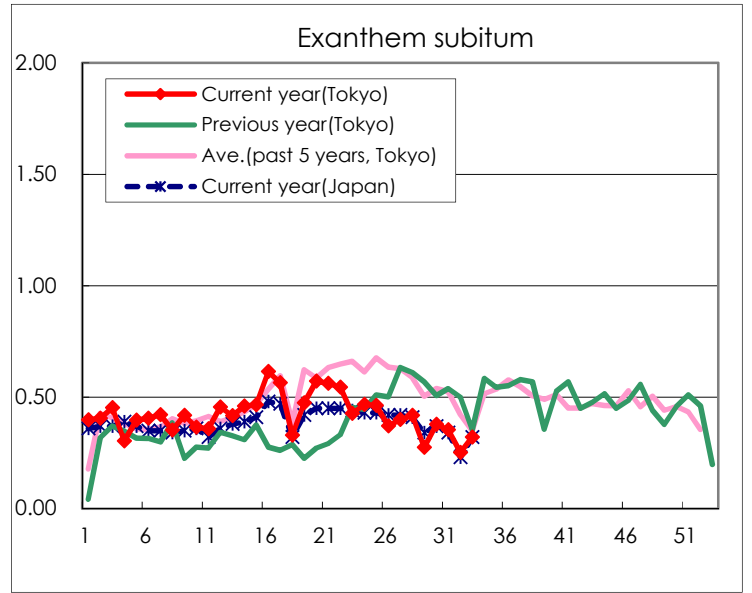
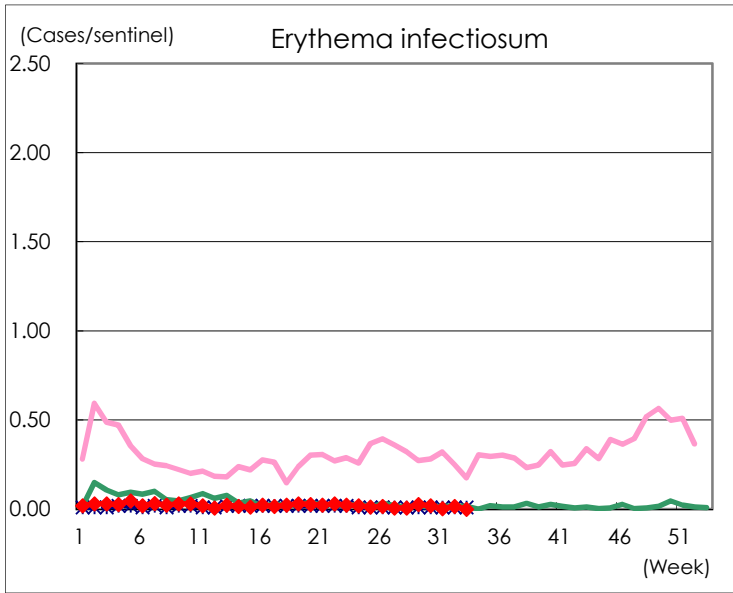
Number of patients with the diseases to be reported  
by the designated clinics and hospitals

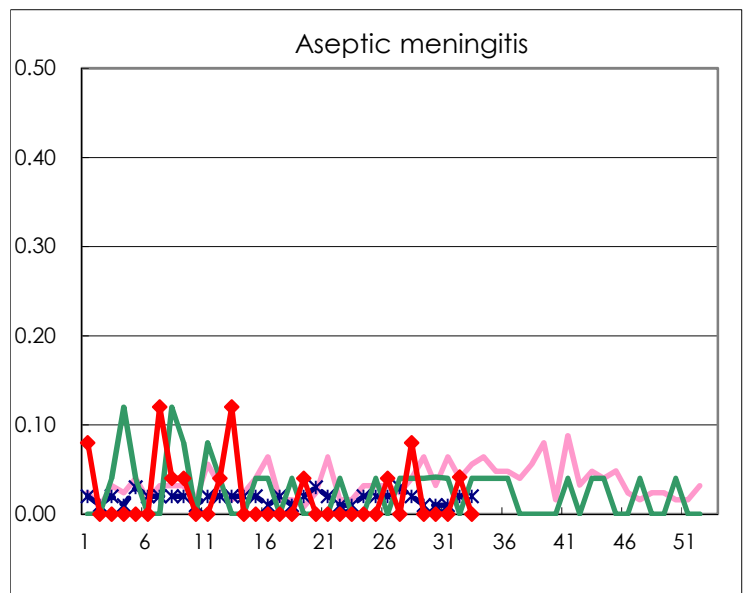
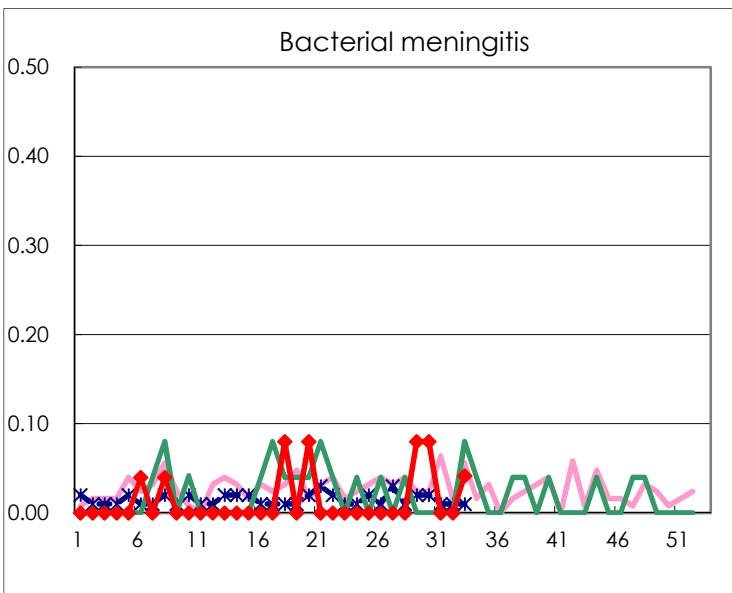
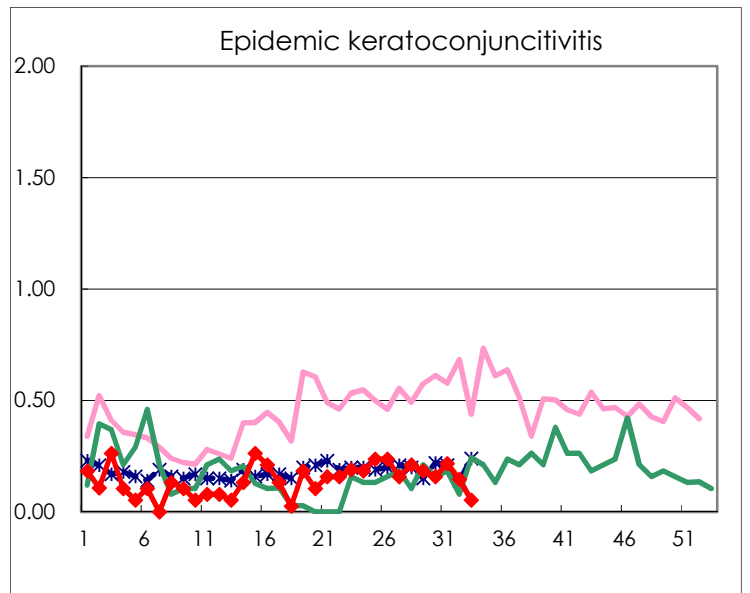
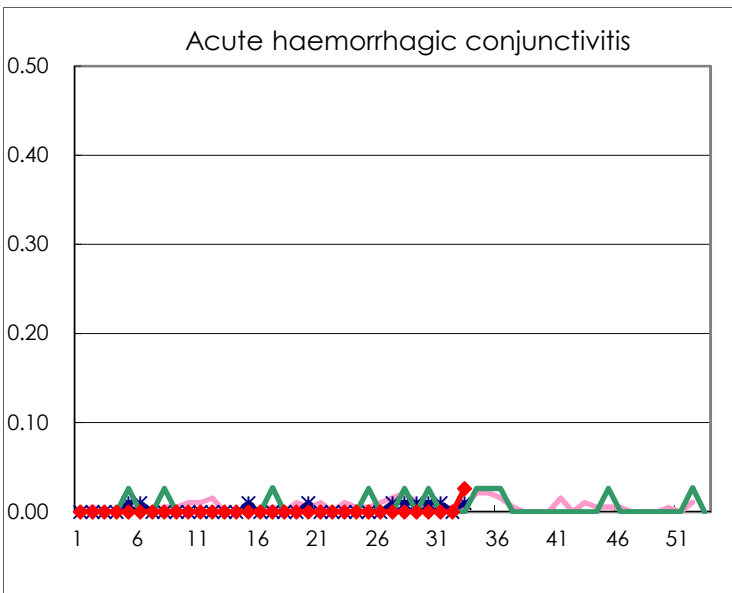
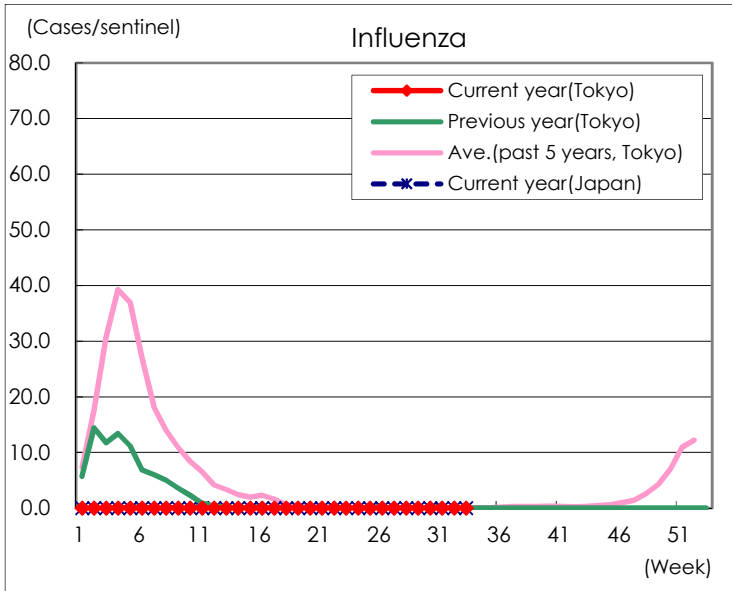
Diseases	Tokyo				
	30th	31st	32nd	33rd	/sentinel
Respiratory syncytial virus infection	1,160	1,009	546	331	1.35
Pharyngoconjunctival fever	28	32	22	20	0.08
Group A streptococcal pharyngitis	70	65	54	52	0.21
Infectious gastroenteritis	596	571	352	431	1.75
Chickenpox	27	15	18	20	0.08
Hand, foot, and mouth disease	15	12	10	17	0.07
Erythema infectiosum	5	1	4		
Exanthem subitum	97	89	62	79	0.32
Herpangina	36	48	19	35	0.14
Mumps	15	20	14	19	0.08
Kawasaki disease	5	9	9	3	0.01
Cold with exanthems	9	9	2	6	0.02
Influenza	1				
Acute hemorrhagic conjunctivitis				1	0.03
Epidemic keratoconjunctivitis	6	8	5	2	0.05
Bacterial meningitis	2			1	0.04
Aseptic meningitis			1		
<i>Mycoplasma pneumoniae</i>		2		1	0.04
Chlamydial pneumonia (excluding psittacosis)					
Infectious gastroenteritis (only by Rotavirus)					
Influenza-Associated Hospitalizations					

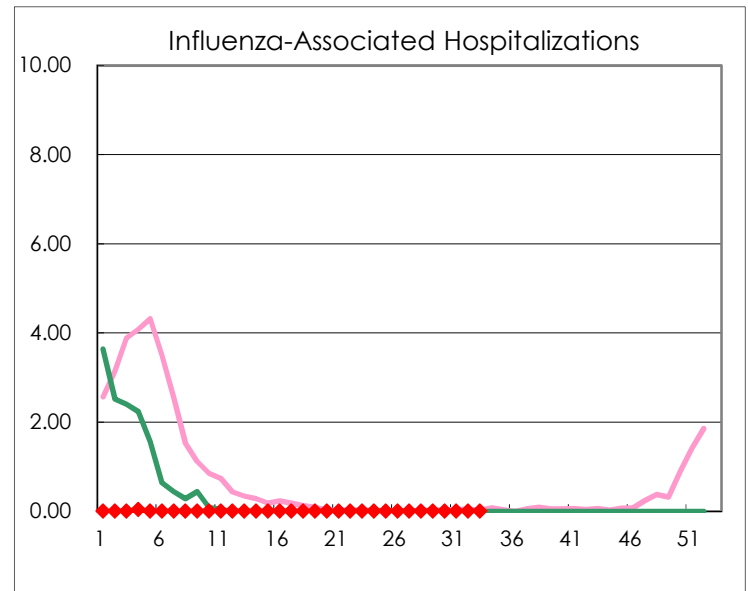
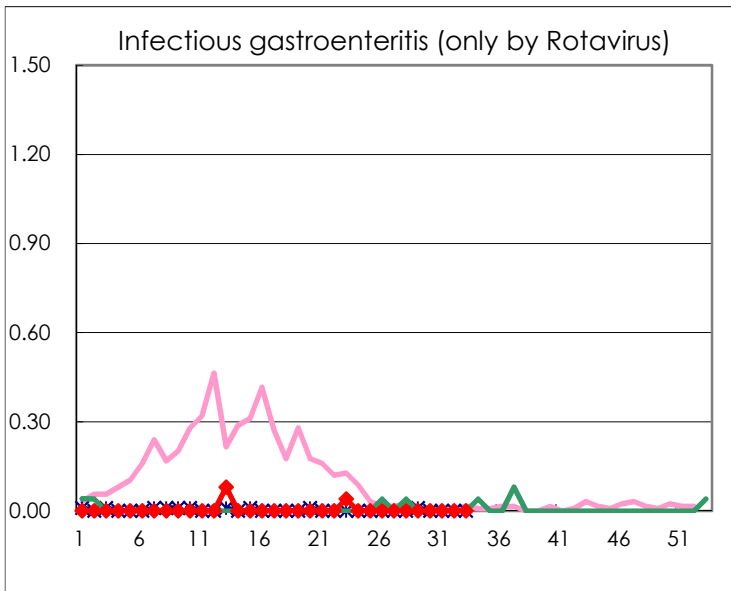
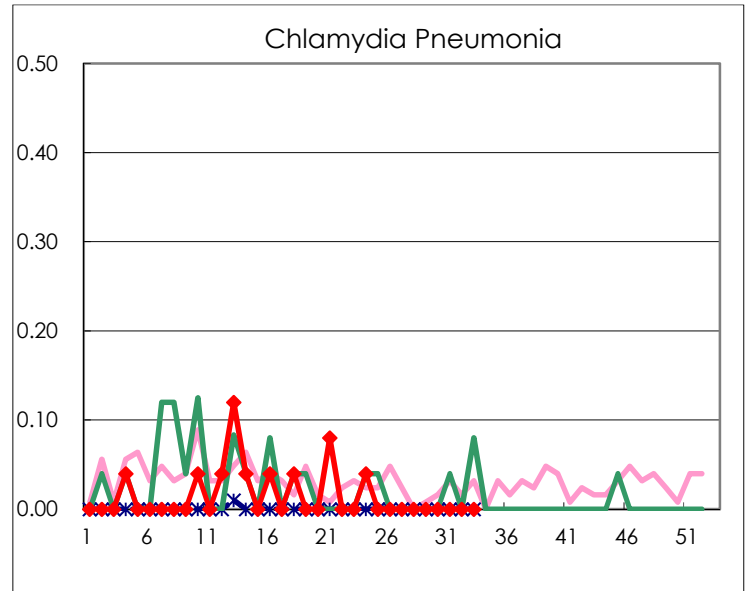
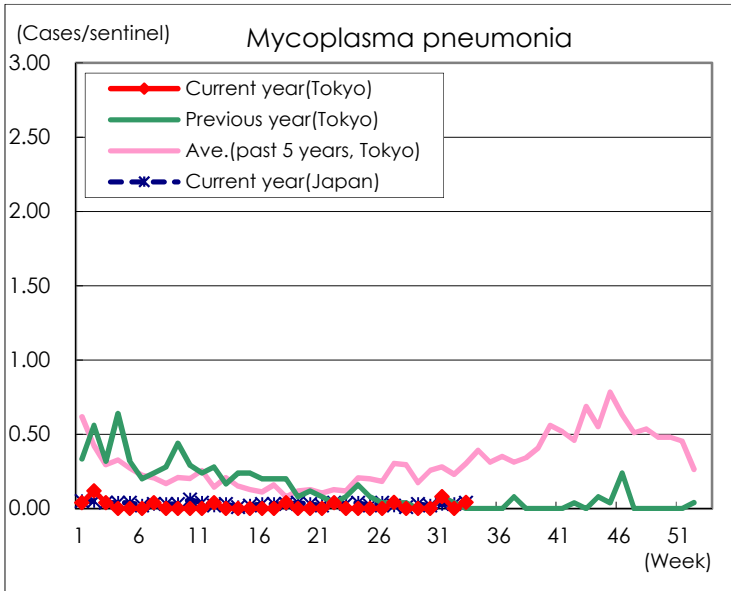
( Blank means 0. )

# Disease Trend Graph (weekly reported cases per sentinel in comparison)









Number of sentinel facilities for weekly reporting		
Types of sentinels	Number of sentinels	Sentinels having reported
Pediatric	264	246
Influenza	419	393
Ophthalmic	39	38
Specially-designated	25	24