

---

INFECTIOUS DISEASES WEEKLY REPORT

# TOKYO IDWR

Tokyo Metropolitan Infectious Disease Surveillance Center

## 9 September 2021 / Number 35 ( 8/30 ~ 9/5 )

### Surveillance System in Tokyo, Japan

The infectious diseases which all physicians must report  
All physicians must report to health centers the incidence of the diseases which are shown at page one. Health centers electronically report the individual cases to Tokyo Metropolitan Infectious Disease Surveillance Center.

The infectious diseases required to be reported by the sentinels  
The numbers of patients who visit the sentinel clinics or hospitals during a week are reported to health centers in Tokyo. And they electronically report the numbers to Tokyo Metropolitan Infectious Disease Surveillance Center. We have about 500 sentinel clinics and hospitals in Tokyo.

Tokyo Metropolitan Institute of Public Health

TEL:81-3-3363-3213 FAX:81-3-5332-7365

e-mail:[www@tokyo-eiken.go.jp](mailto:www@tokyo-eiken.go.jp)

URL:[idsc.tokyo-eiken.go.jp/](http://idsc.tokyo-eiken.go.jp/)

---

Number of patients with the diseases which all physicians must report

Category	Diseases	Tokyo					Japan	
		32nd	33rd	34th	35th	Cum 2021	35th	Cum 2021
I	Ebola hemorrhagic fever							
	Crimean-Congo hemorrhagic fever							
	Smallpox							
	South American hemorrhagic fever							
	Plague							
	Marburg disease							
	Lassa fever							
II	Acute poliomyelitis							
	Tuberculosis	30	32	27	35	1,465	213	10,390
	Diphtheria							
	Severe Acute Respiratory Syndrome(SARS)							
	Middle East Respiratory Syndrome (MERS)							
	Avian influenza H5N1							
	Avian influenza H7N9							
III	Cholera							
	Shigellosis					2		6
	Enterohemorrhagic Escherichia coli infection	6	9	14	10	209	73	2,018
	Typhoid fever							
	Paratyphoid fever							
IV	Hepatitis E	2				79	2	307
	West Nile fever							
	Hepatitis A					10	1	49
	Echinococcosis					1		19
	Yellow fever							
	Psittacosis							7
	Omsk hemorrhagic fever							
	Relapsing fever							5
	Kyasanur forest disease							
	Q fever					1		1
	Rabies							
	Coccidioidomycosis							
	Monkeypox							
	Zika virus infection							
	Severe Fever with Thrombocytopenia Syndrome						2	88
	Hemorrhagic fever with renal syndrome							
	Western equine encephalitis							
	Tick-borne encephalitis							
	Anthrax							
	Chikungunya fever							
	Scrub typhus(Tsutsugamushi disease)					2		136
	Dengue fever							4
	Eastern equine encephalitis							
	Avian influenza (excluding H5N1 and H7N9)							
	Nipah virus infection							
	Japanese spotted fever					3	5	265
	Japanese encephalitis							
	Hantavirus pulmonary syndrome							
	Herpes B virus infection							
	Glanders							
	Brucellosis							1
	Venezuelan equine encephalitis							
	Hendra virus infection							
	Epidemic typhus							
	Botulism					1		5
Malaria	1				5	1	15	
Tularemia								
Lyme disease							17	
Lyssavirus infection(excluding rabies)								
Rift valley fever								
Melioidosis								
Legionellosis	4	5	4	2	86	45	1,269	
Leptospirosis					1	1	13	
Rocky mountain spotted fever								

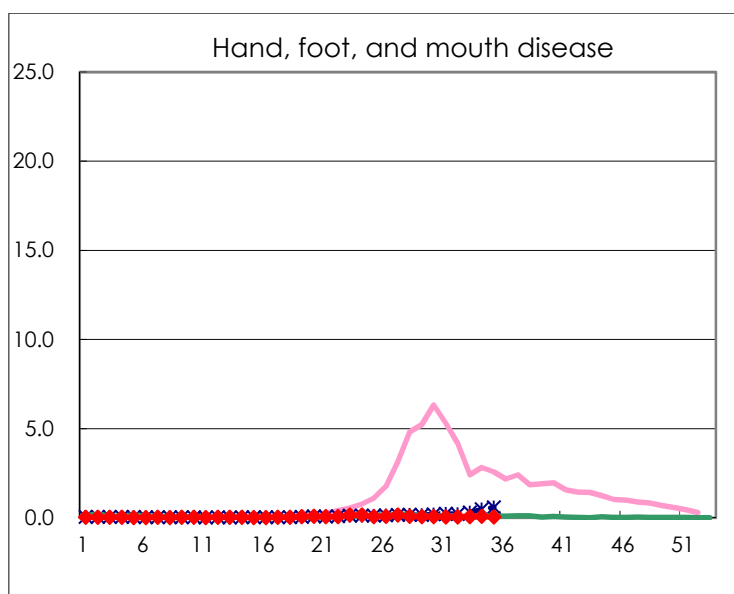
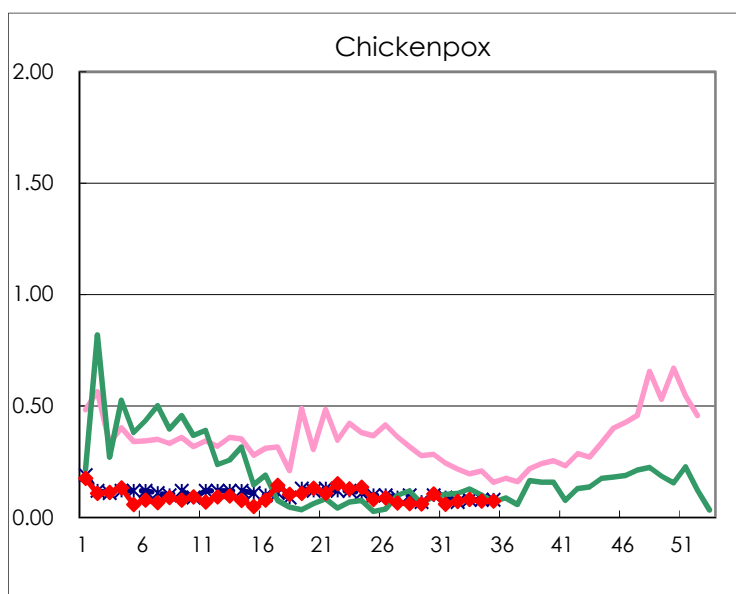
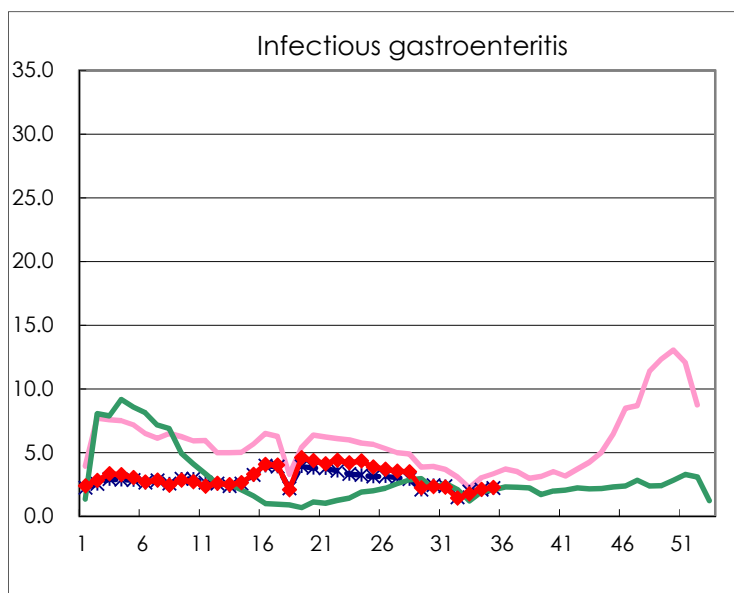
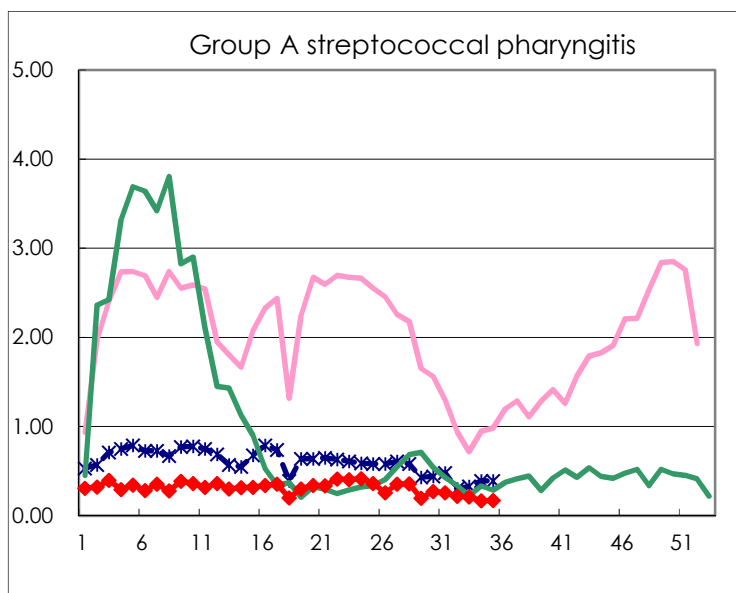
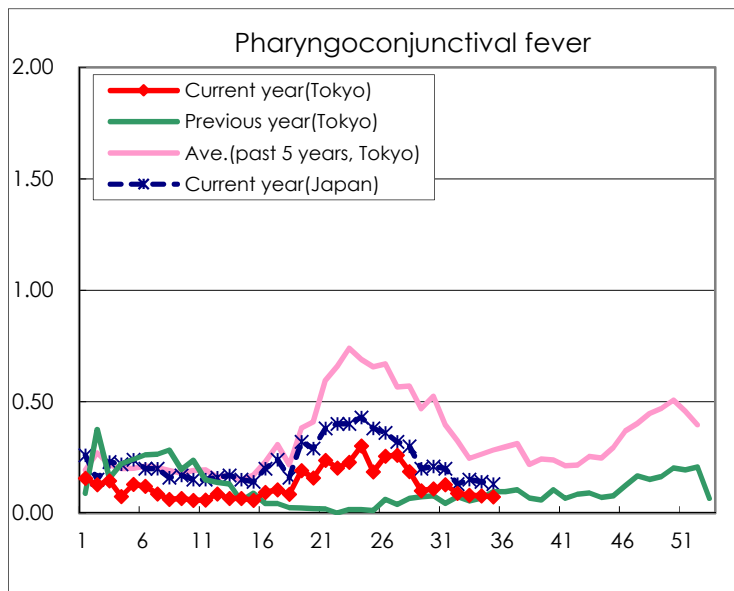
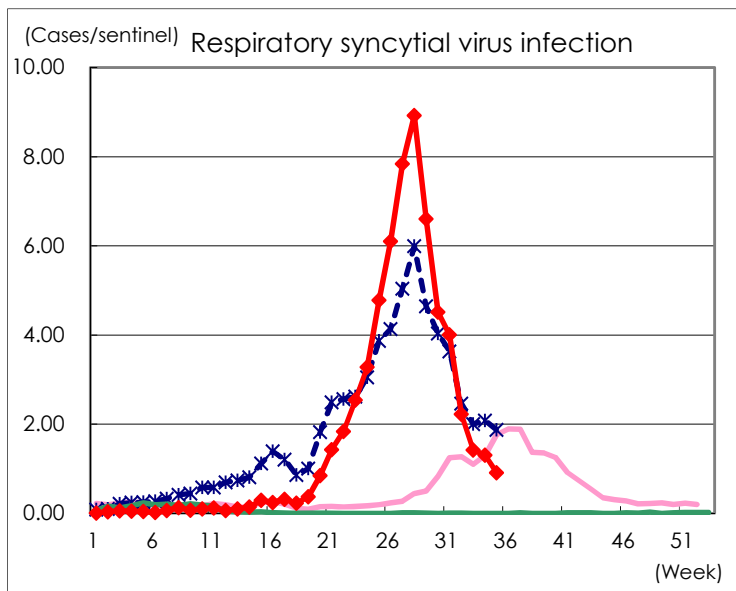
Category	Diseases	Tokyo					Japan	
		32nd	33rd	34th	35th	Cum 2021	35th	Cum 2021
V	Amebiasis	3	2	2		65	3	362
	Viral hepatitis(excluding hepatitis A and E)	1		1	1	33	3	128
	CRE infection	4	2	3	4	125	40	1,266
	Acute Flaccid Paralysis (excluding Acute poliomyelitis)					2		13
	Acute encephalitis(excluding JE and WNE)		2	1		14	3	228
	Cryptosporidiosis							4
	Creutzfeldt-Jakob disease					9	3	118
	Severe invasive streptococcal infections(TSLS)		3	2		45	8	400
	Acquired immunodeficiency syndrome (AIDS)		6	8	2	244	8	694
	Giardiasis					8	1	26
	Invasive <i>Haemophilus influenzae</i> disease				1	15	2	138
	Invasive meningococcal disease							2
	Invasive pneumococcal disease	3	5	6	3	93	9	925
	Varicella (limited to hospitalized case)	1		1		22	7	184
	Congenital rubella syndrome							1
	Syphilis	50	42	49	46	1,536	102	4,707
	Disseminated cryptococcosis					8	1	90
	Tetanus					2	2	61
	Vancomycin-resistant <i>S. aureus</i> infection							
	Vancomycin-resistant <i>Enterococcus</i> infection	1	1	1		8		85
	Pertussis		1		1	37	4	415
Rubella					1		8	
Measles						1	4	
MDRA infection				1	1	1	3	

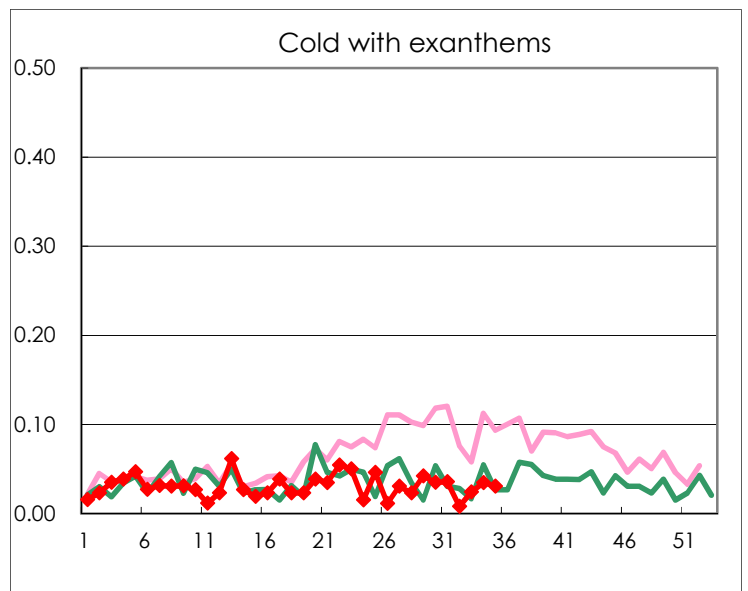
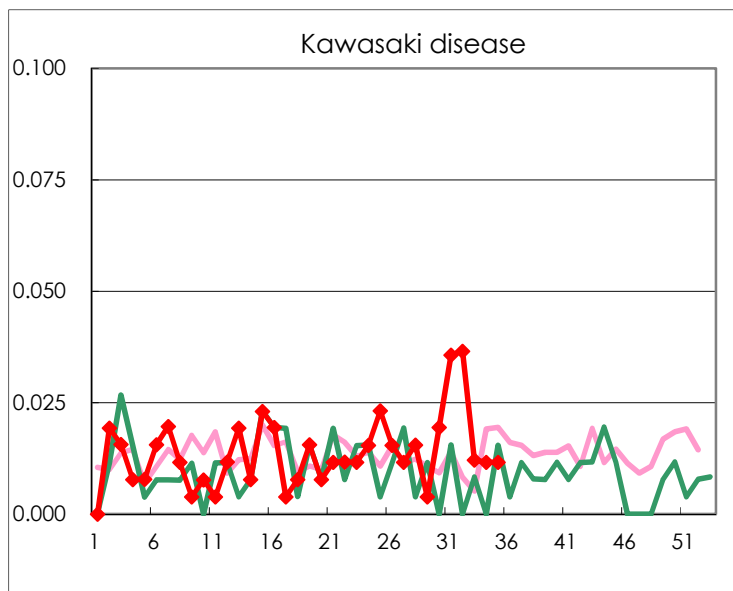
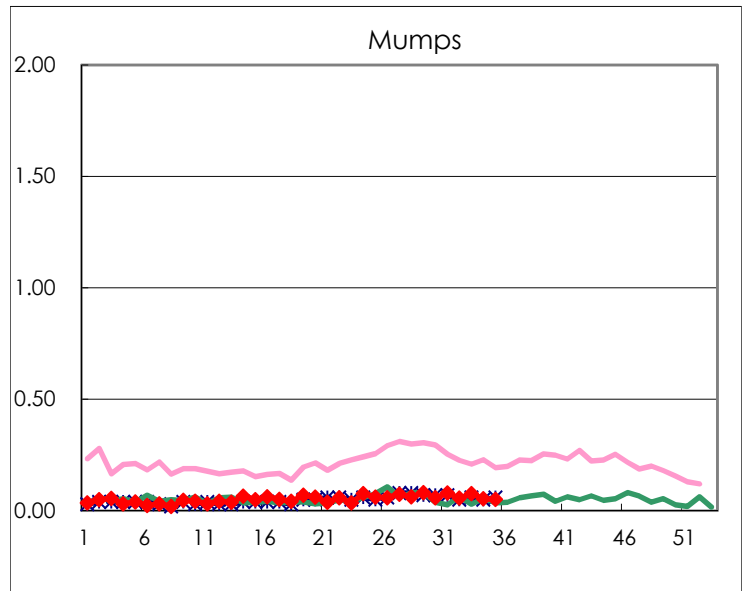
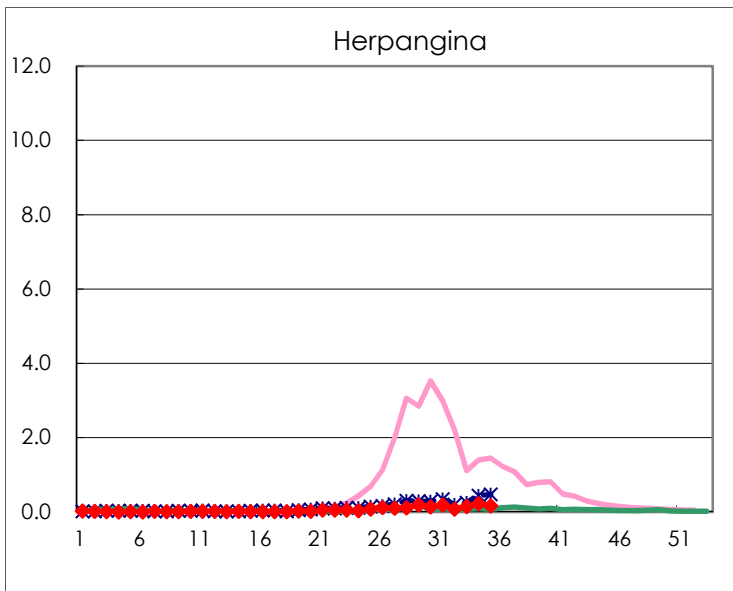
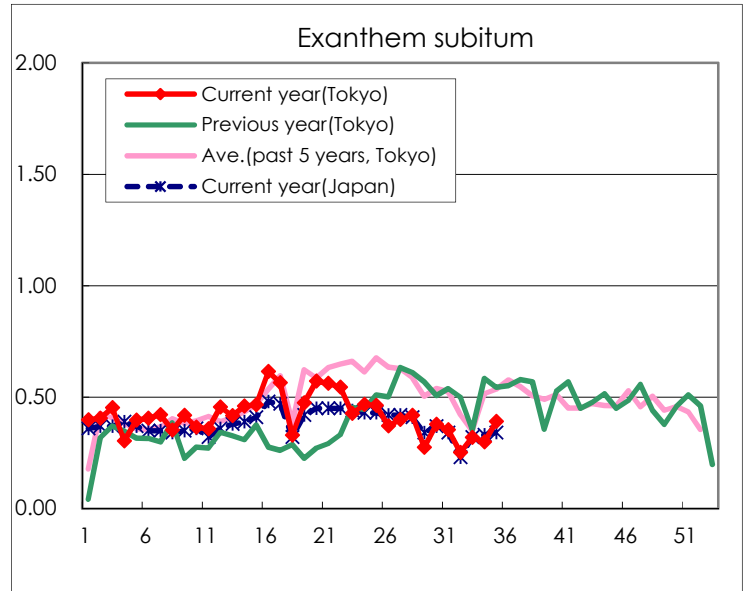
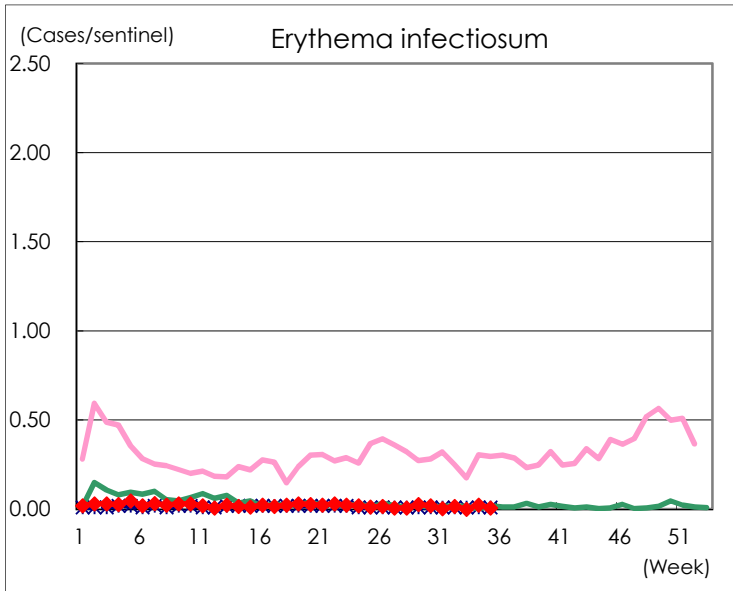
Number of patients with the diseases to be reported  
by the designated clinics and hospitals

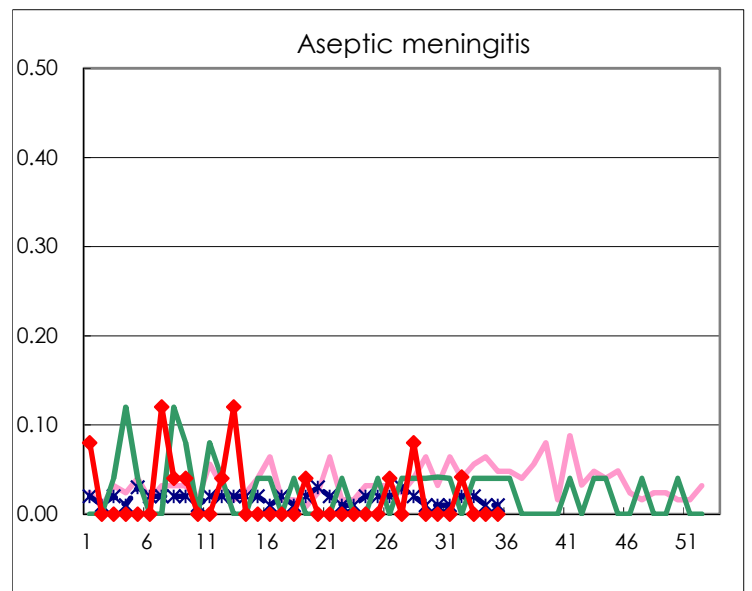
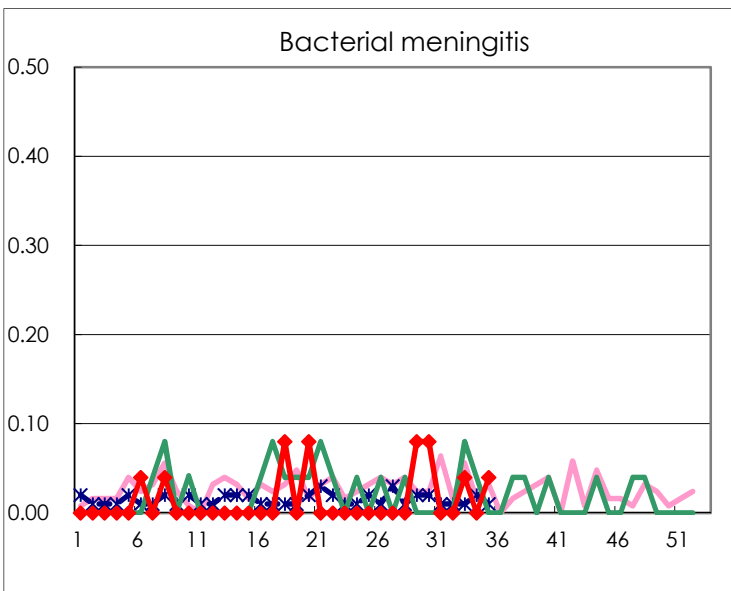
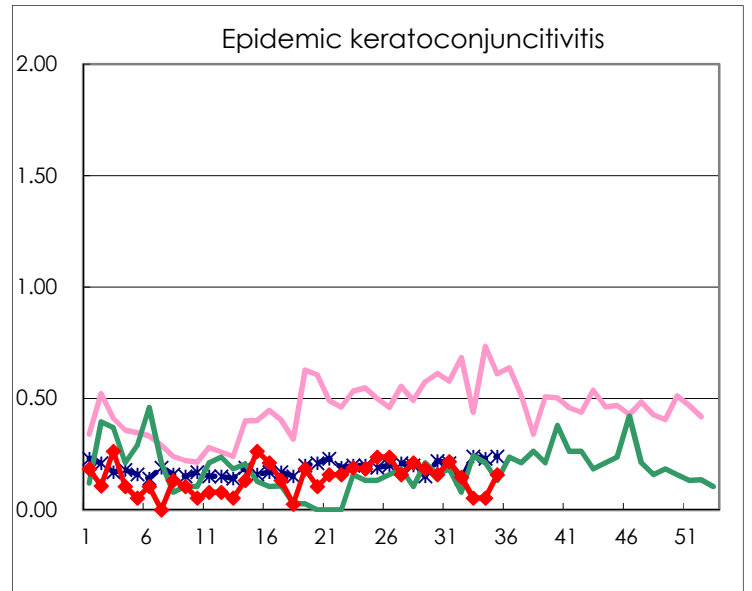
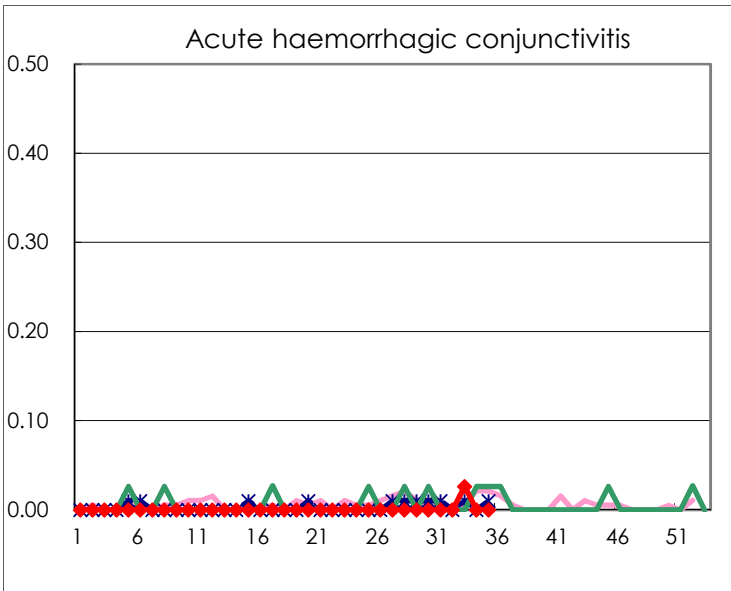
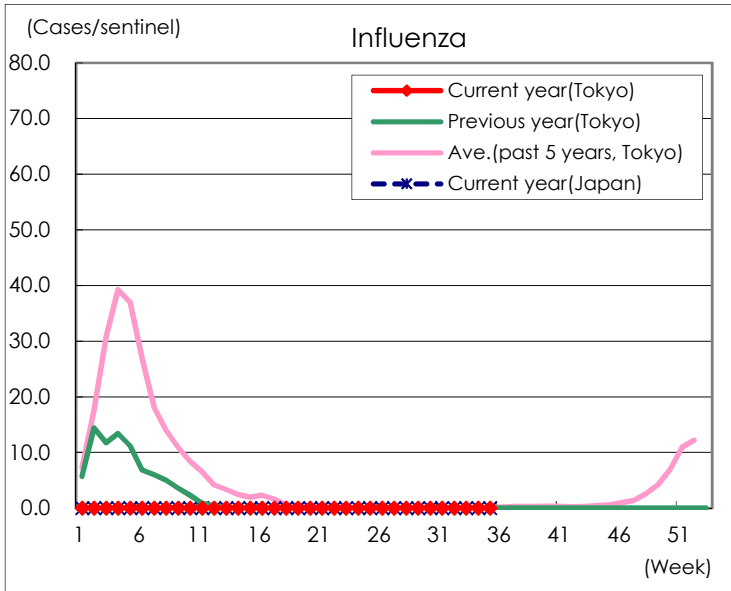
Diseases	Tokyo				
	32nd	33rd	34th	35th	/sentinel
Respiratory syncytial virus infection	546	350	337	235	0.91
Pharyngoconjunctival fever	22	20	20	19	0.07
Group A streptococcal pharyngitis	54	52	43	44	0.17
Infectious gastroenteritis	352	431	540	582	2.26
Chickenpox	18	20	19	19	0.07
Hand, foot, and mouth disease	10	17	22	12	0.05
Erythema infectiosum	4		6	2	0.01
Exanthem subitum	62	79	77	101	0.39
Herpangina	19	35	57	43	0.17
Mumps	14	19	14	13	0.05
Kawasaki disease	9	3	3	3	0.01
Cold with exanthems	2	6	9	8	0.03
Influenza					
Acute hemorrhagic conjunctivitis		1			
Epidemic keratoconjunctivitis	5	2	2	6	0.16
Bacterial meningitis		1		1	0.04
Aseptic meningitis	1				
<i>Mycoplasma pneumoniae</i>		1		1	0.04
Chlamydial pneumonia (excluding psittacosis)					
Infectious gastroenteritis (only by Rotavirus)					
Influenza-Associated Hospitalizations					

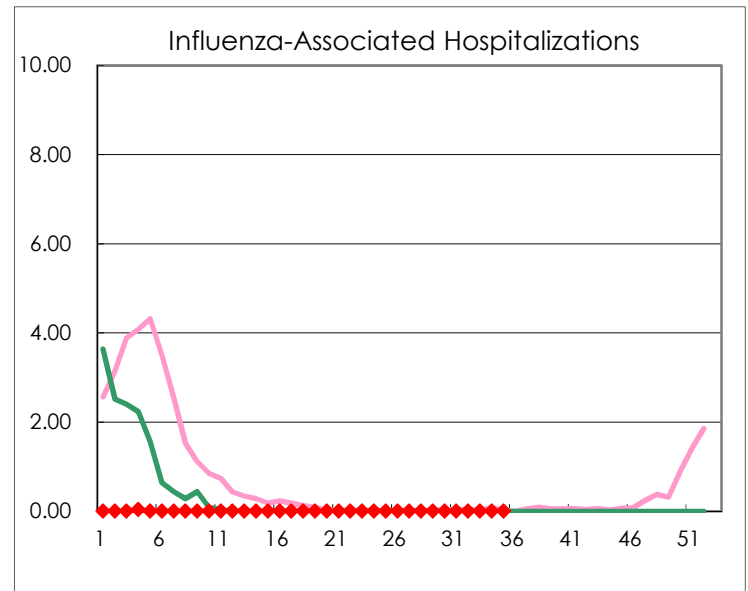
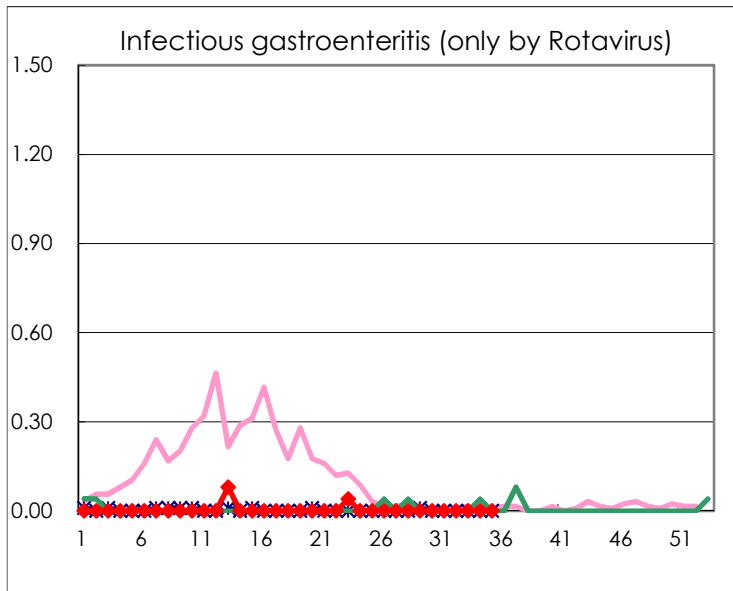
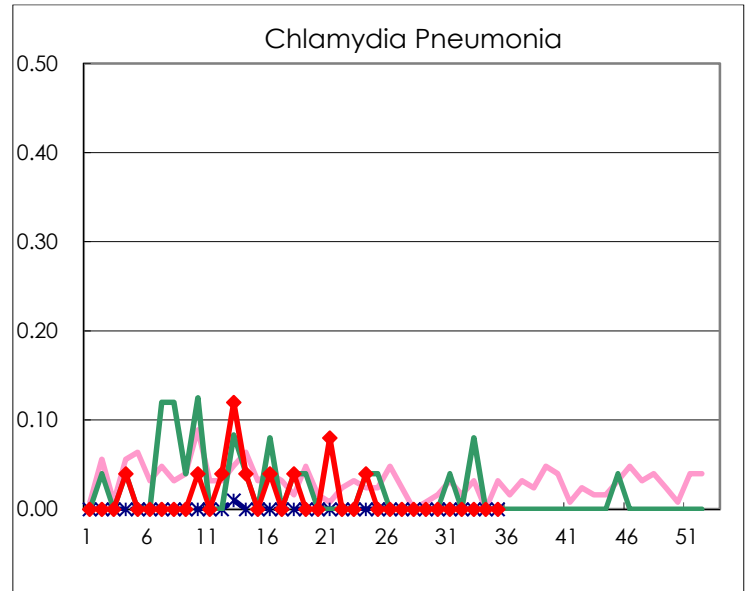
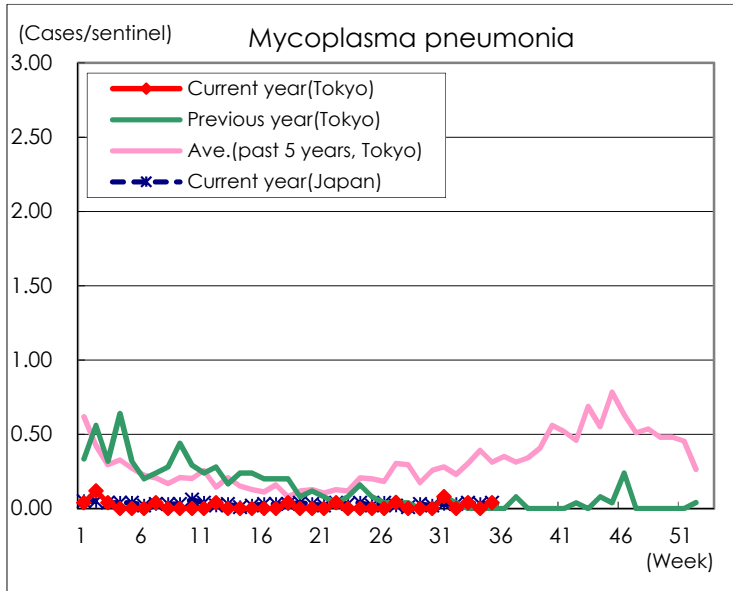
( Blank means 0. )

# Disease Trend Graph (weekly reported cases per sentinel in comparison)









Number of sentinel facilities for weekly reporting		
Types of sentinels	Number of sentinels	Sentinels having reported
Pediatric	264	258
Influenza	419	409
Ophthalmic	39	38
Specially-designated	25	25