
INFECTIOUS DISEASES WEEKLY REPORT

TOKYO IDWR

Tokyo Metropolitan Infectious Disease Surveillance Center

16 September 2021 / Number 36 (9/6 ~ 9/12)

Surveillance System in Tokyo, Japan

The infectious diseases which all physicians must report
All physicians must report to health centers the incidence of the diseases which are shown at page one. Health centers electronically report the individual cases to Tokyo Metropolitan Infectious Disease Surveillance Center.

The infectious diseases required to be reported by the sentinels
The numbers of patients who visit the sentinel clinics or hospitals during a week are reported to health centers in Tokyo. And they electronically report the numbers to Tokyo Metropolitan Infectious Disease Surveillance Center. We have about 500 sentinel clinics and hospitals in Tokyo.

Tokyo Metropolitan Institute of Public Health

TEL:81-3-3363-3213 FAX:81-3-5332-7365

e-mail:www@tokyo-eiken.go.jp

URL:idsc.tokyo-eiken.go.jp/

Number of patients with the diseases which all physicians must report

Category	Diseases	Tokyo					Japan	
		33rd	34th	35th	36th	Cum 2021	36th	Cum 2021
I	Ebola hemorrhagic fever							
	Crimean-Congo hemorrhagic fever							
	Smallpox							
	South American hemorrhagic fever							
	Plague							
	Marburg disease							
	Lassa fever							
II	Acute poliomyelitis							
	Tuberculosis	33	27	44	43	1,520	213	10,724
	Diphtheria							
	Severe Acute Respiratory Syndrome(SARS)							
	Middle East Respiratory Syndrome (MERS)							
	Avian influenza H5N1							
	Avian influenza H7N9							
III	Cholera							
	Shigellosis					2		6
	Enterohemorrhagic Escherichia coli infection	9	14	12	7	220	87	2,130
	Typhoid fever							
	Paratyphoid fever							
IV	Hepatitis E				1	80	5	317
	West Nile fever							
	Hepatitis A					10	1	50
	Echinococcosis					1	1	20
	Yellow fever							
	Psittacosis							7
	Omsk hemorrhagic fever							
	Relapsing fever							5
	Kyasanur forest disease							
	Q fever					1		1
	Rabies							
	Coccidioidomycosis							
	Monkeypox							
	Zika virus infection							
	Severe Fever with Thrombocytopenia Syndrome						1	90
	Hemorrhagic fever with renal syndrome							
	Western equine encephalitis							
	Tick-borne encephalitis							
	Anthrax							
	Chikungunya fever							
	Scrub typhus(Tsutsugamushi disease)					2		136
	Dengue fever							4
	Eastern equine encephalitis							
	Avian influenza (excluding H5N1 and H7N9)							
	Nipah virus infection							
	Japanese spotted fever					3	10	279
	Japanese encephalitis							
	Hantavirus pulmonary syndrome							
	Herpes B virus infection							
	Glanders							
	Brucellosis							1
	Venezuelan equine encephalitis							
	Hendra virus infection							
Epidemic typhus								
Botulism					1		5	
Malaria		1		1	7	1	17	
Tularemia								
Lyme disease							17	
Lyssavirus infection(excluding rabies)								
Rift valley fever								
Melioidosis								
Legionellosis	5	4	2	2	88	44	1,338	
Leptospirosis					1	1	14	
Rocky mountain spotted fever								

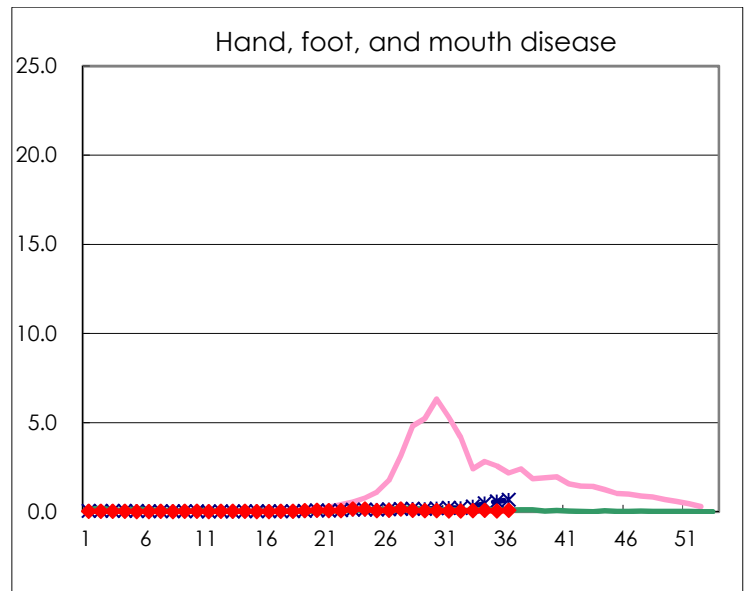
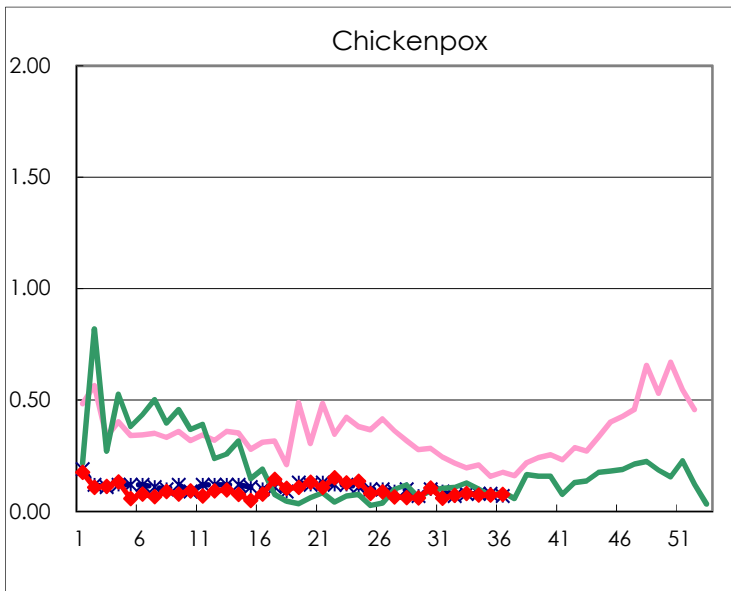
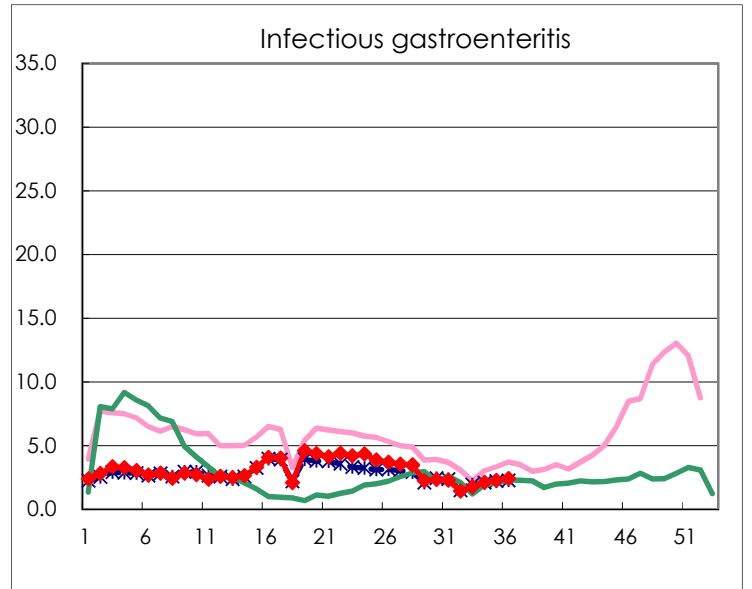
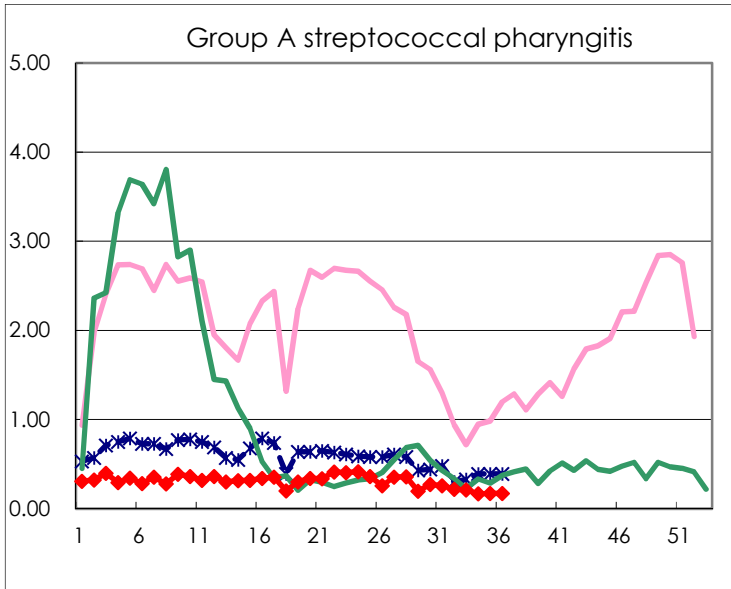
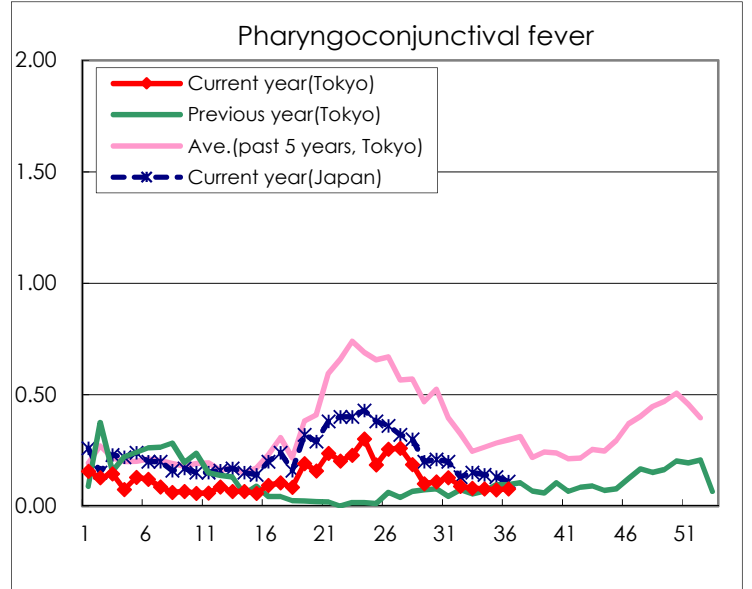
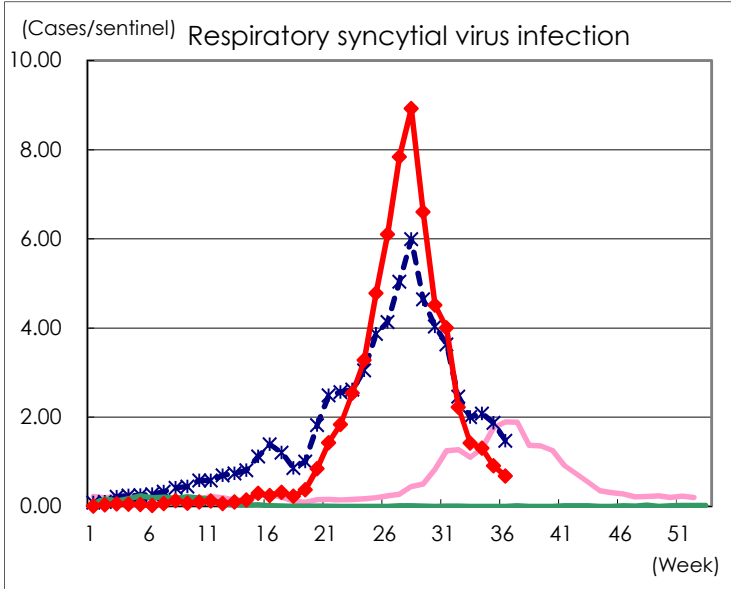
Category	Diseases	Tokyo					Japan	
		33rd	34th	35th	36th	Cum 2021	36th	Cum 2021
V	Amebiasis	2	2		1	66	6	372
	Viral hepatitis(excluding hepatitis A and E)		1	1	2	35	5	134
	CRE infection	2	3	5	3	129	24	1,306
	Acute Flaccid Paralysis (excluding Acute poliomyelitis)					2	1	14
	Acute encephalitis(excluding JE and WNE)	2	1		1	15	5	234
	Cryptosporidiosis							4
	Creutzfeldt-Jakob disease				1	10	2	124
	Severe invasive streptococcal infections(TSLS)	3	2		2	47	11	416
	Acquired immunodeficiency syndrome (AIDS)	6	8	2	8	252	6	711
	Giardiasis					8	1	27
	Invasive <i>Haemophilus influenzae</i> disease			1		15	1	139
	Invasive meningococcal disease							2
	Invasive pneumococcal disease	5	6	3	3	96	15	952
	Varicella (limited to hospitalized case)		1			22	4	189
	Congenital rubella syndrome							1
	Syphilis	42	49	46	55	1,591	115	4,920
	Disseminated cryptococcosis					8	2	95
	Tetanus					2	1	64
	Vancomycin-resistant <i>S. aureus</i> infection							
	Vancomycin-resistant <i>Enterococcus</i> infection	1	1			8	1	86
	Pertussis	1	1	1		38	9	426
Rubella					1		8	
Measles							5	
MDRA infection			1		1		3	

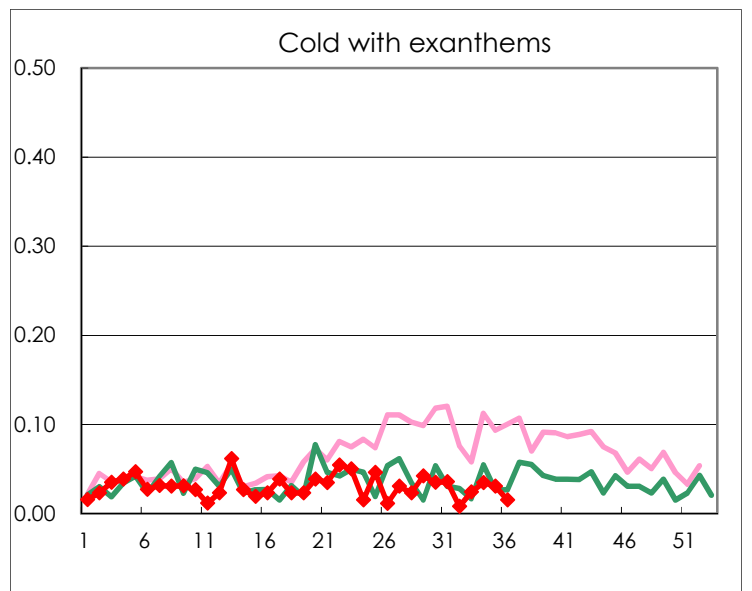
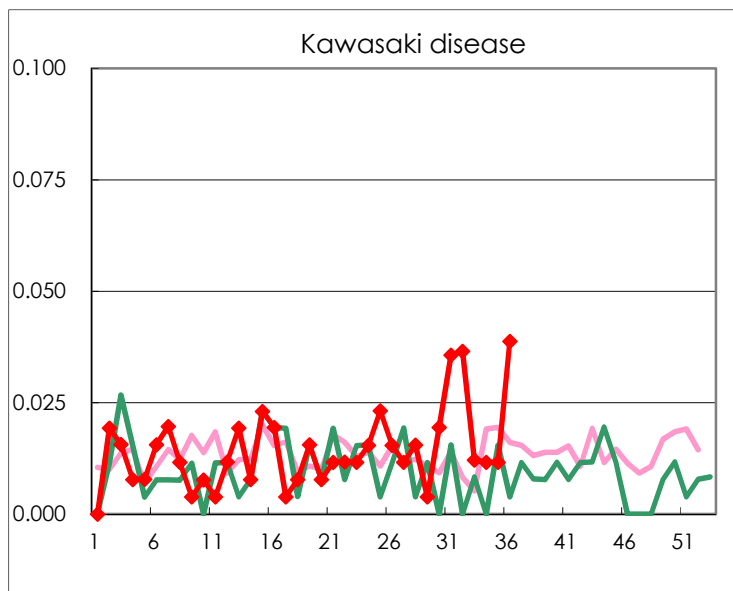
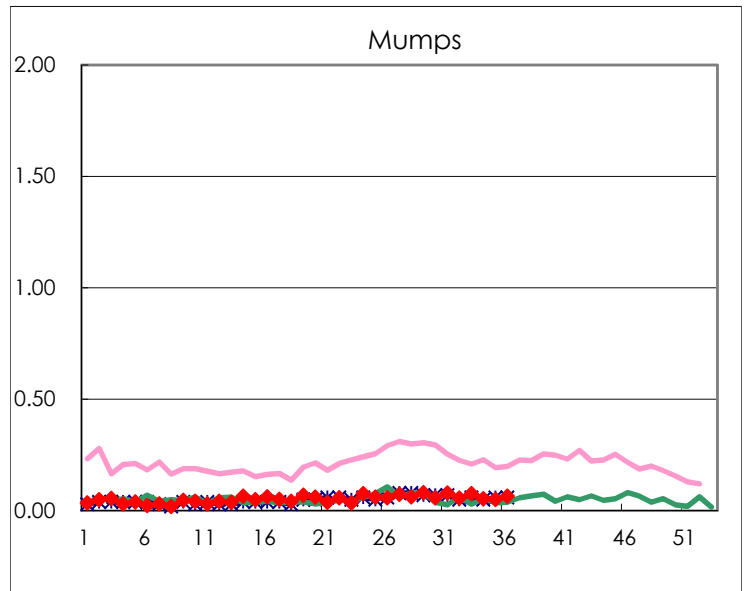
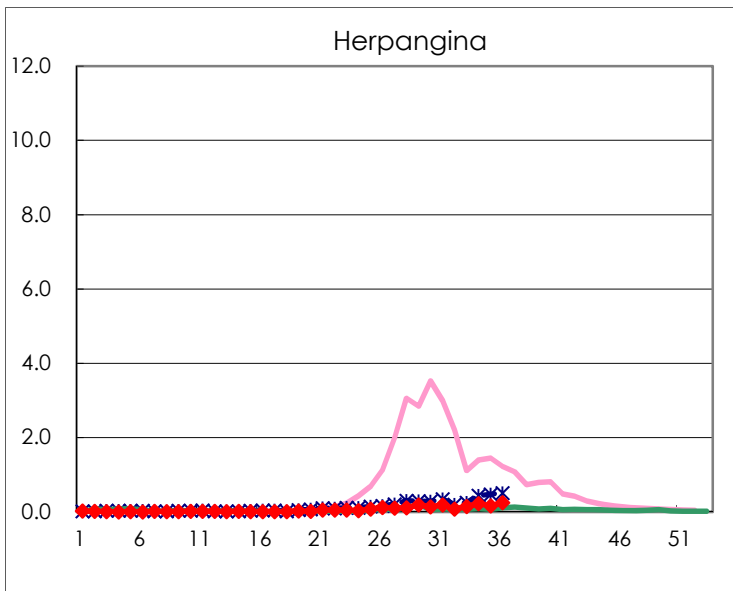
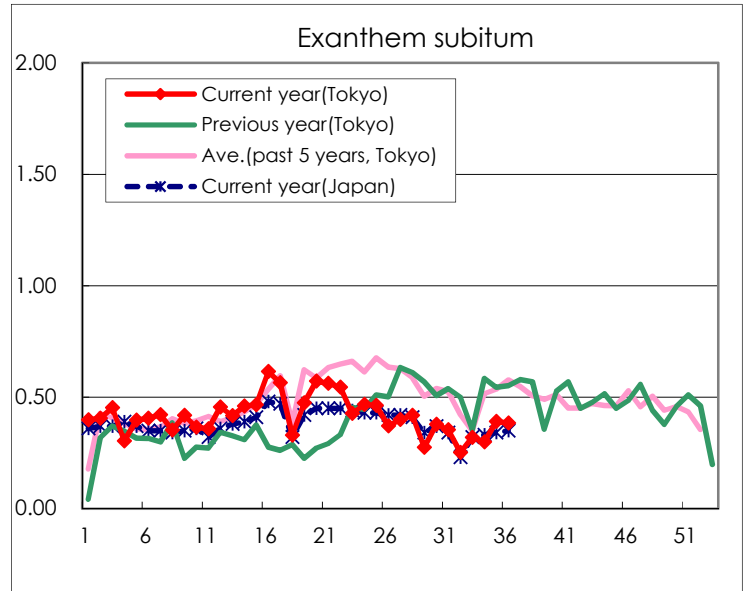
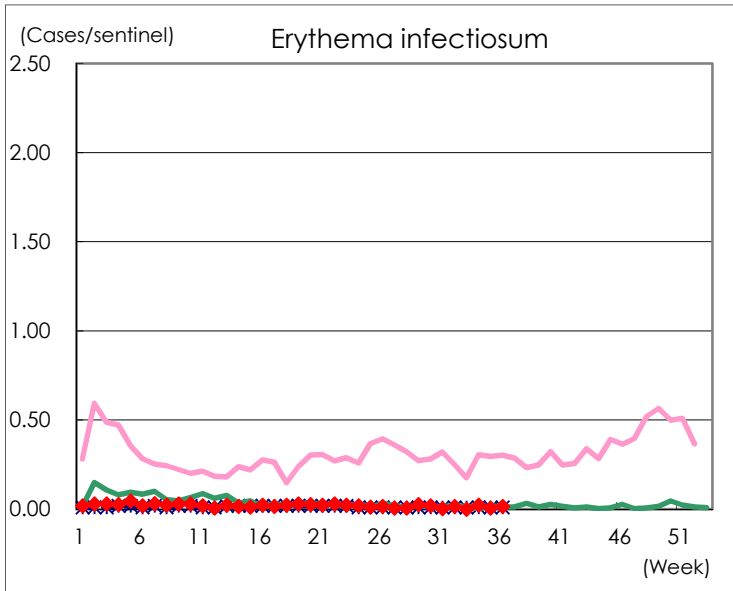
Number of patients with the diseases to be reported
by the designated clinics and hospitals

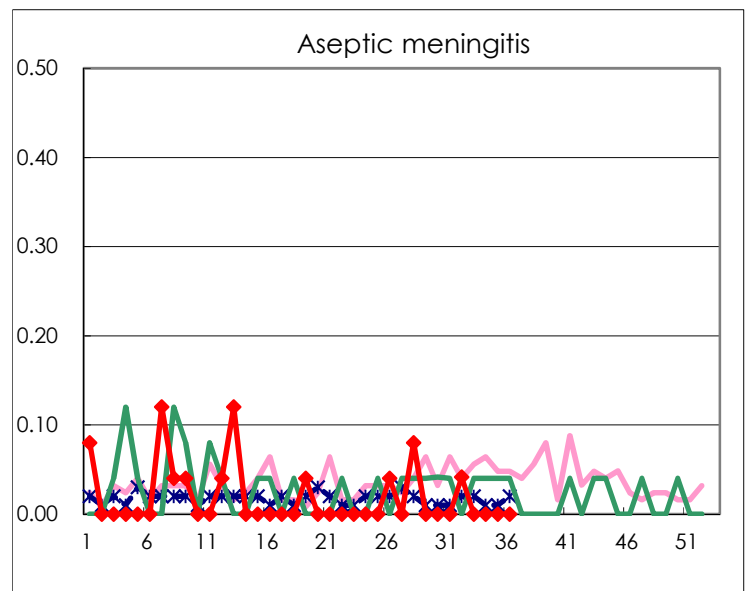
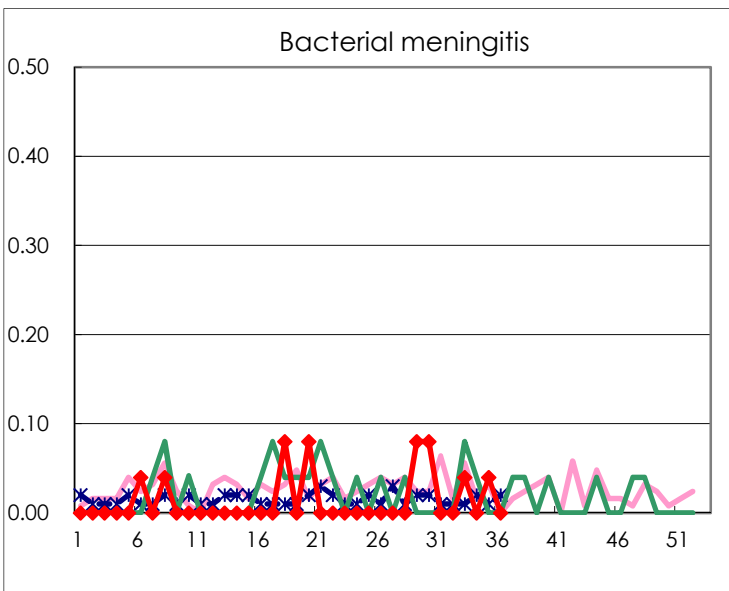
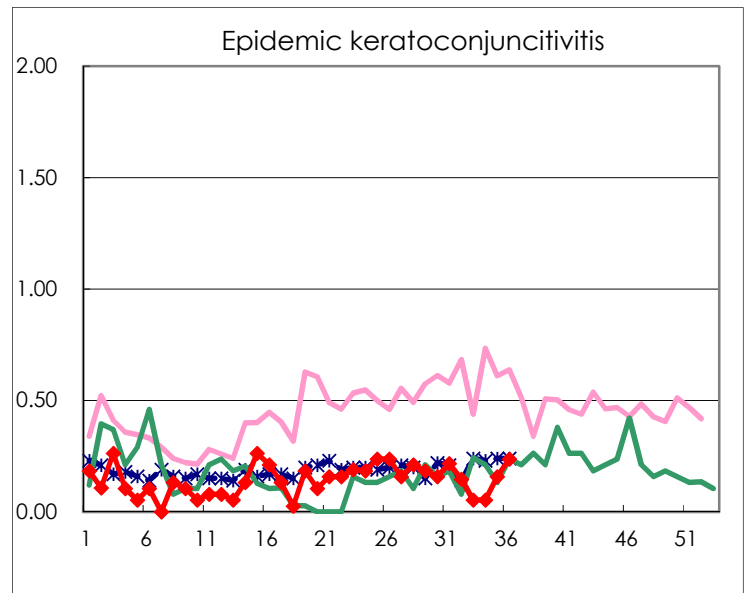
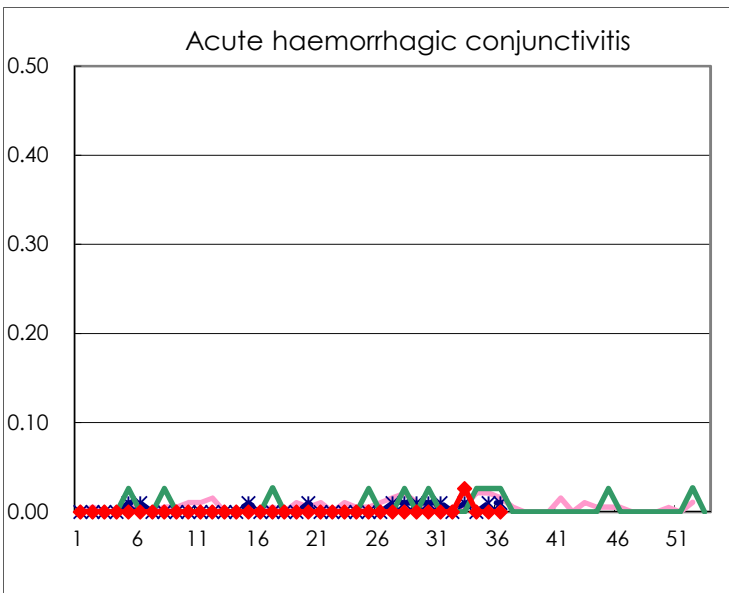
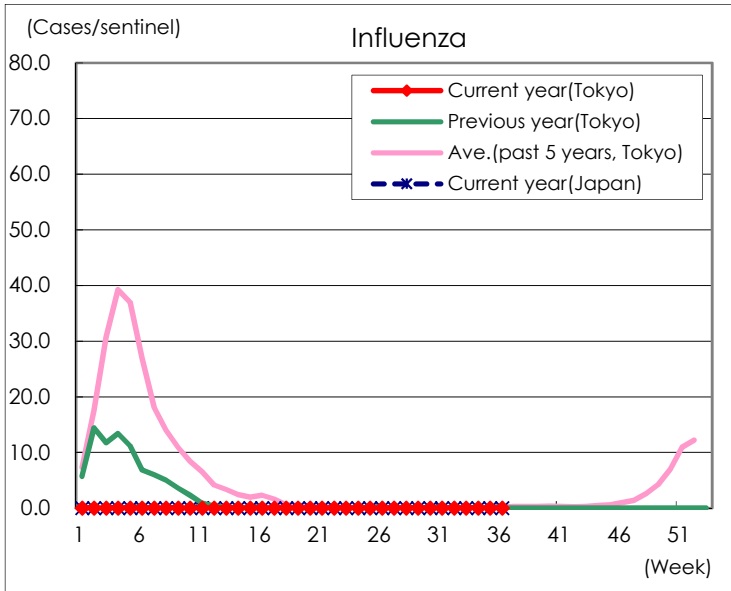
Diseases	Tokyo				
	33rd	34th	35th	36th	/sentinel
Respiratory syncytial virus infection	350	337	235	176	0.68
Pharyngoconjunctival fever	20	20	19	20	0.08
Group A streptococcal pharyngitis	52	43	44	44	0.17
Infectious gastroenteritis	431	540	582	620	2.40
Chickenpox	20	19	19	20	0.08
Hand, foot, and mouth disease	17	22	12	19	0.07
Erythema infectiosum		6	2	4	0.02
Exanthem subitum	79	77	101	99	0.38
Herpangina	35	57	43	64	0.25
Mumps	19	14	13	17	0.07
Kawasaki disease	3	3	3	10	0.04
Cold with exanthems	6	9	8	4	0.02
Influenza					
Acute hemorrhagic conjunctivitis	1				
Epidemic keratoconjunctivitis	2	2	6	9	0.24
Bacterial meningitis	1		1		
Aseptic meningitis					
<i>Mycoplasma pneumoniae</i>	1		1		
Chlamydial pneumonia (excluding psittacosis)					
Infectious gastroenteritis (only by Rotavirus)					
Influenza-Associated Hospitalizations					

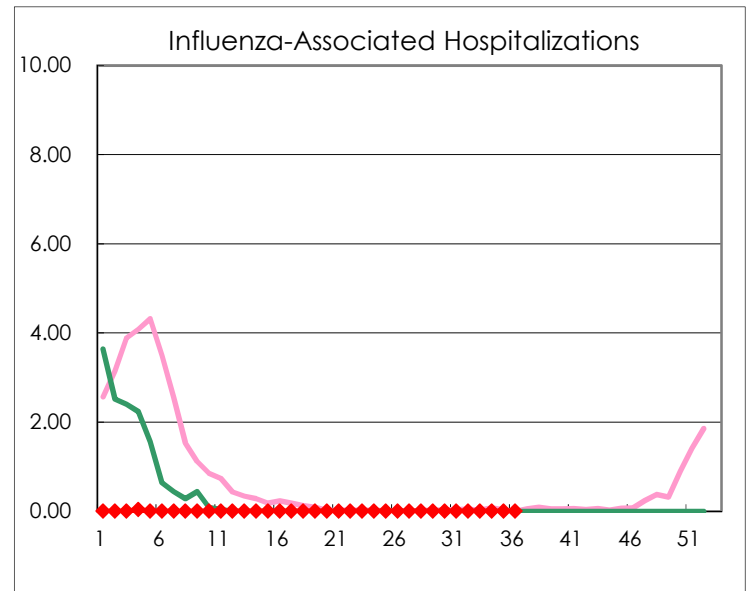
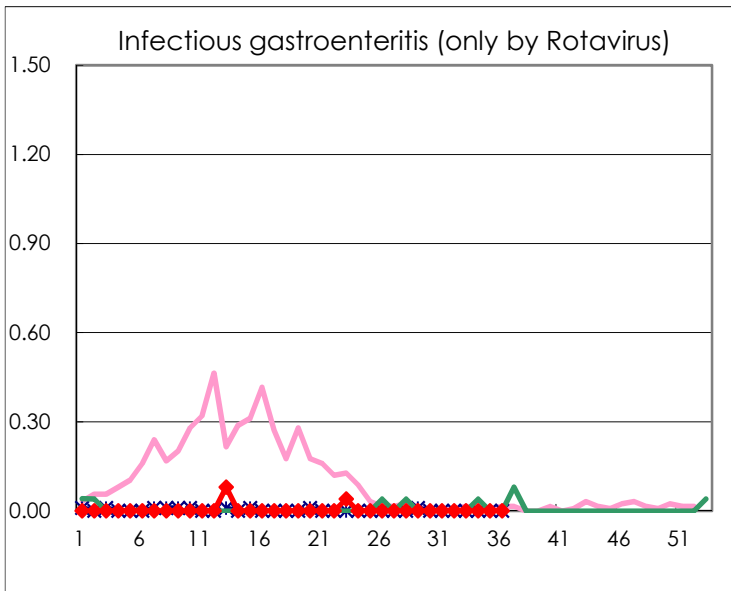
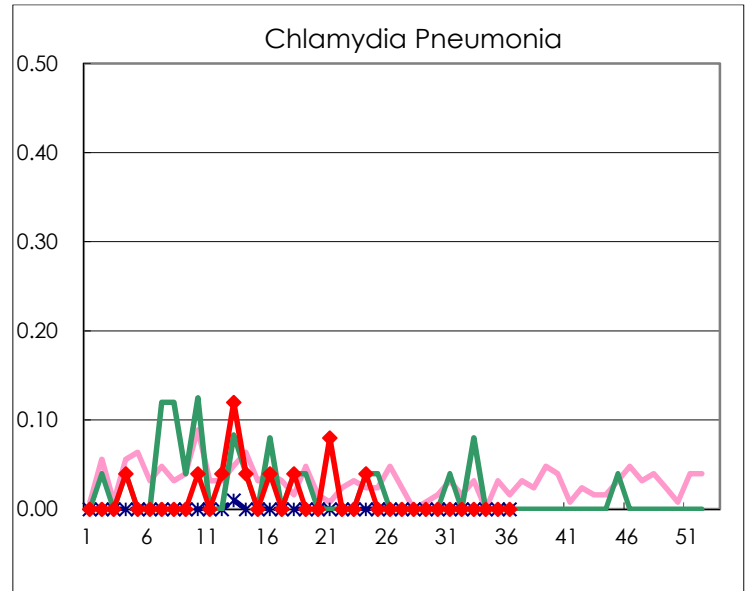
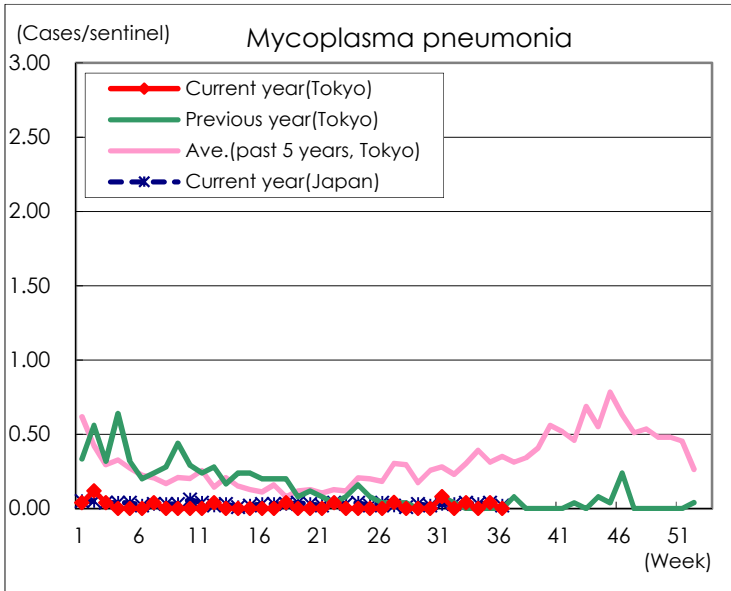
(Blank means 0.)

Disease Trend Graph (weekly reported cases per sentinel in comparison)









Number of sentinel facilities for weekly reporting		
Types of sentinels	Number of sentinels	Sentinels having reported
Pediatric	264	258
Influenza	419	409
Ophthalmic	39	38
Specially-designated	25	24