

---

INFECTIOUS DISEASES WEEKLY REPORT

# TOKYO IDWR

Tokyo Metropolitan Infectious Disease Surveillance Center

**24 September 2021 / Number 37**  
**( 9/13 ~ 9/19 )**

## Surveillance System in Tokyo, Japan

The infectious diseases which all physicians must report  
All physicians must report to health centers the incidence of the diseases which are shown at page one. Health centers electronically report the individual cases to Tokyo Metropolitan Infectious Disease Surveillance Center.

The infectious diseases required to be reported by the sentinels  
The numbers of patients who visit the sentinel clinics or hospitals during a week are reported to health centers in Tokyo. And they electronically report the numbers to Tokyo Metropolitan Infectious Disease Surveillance Center. We have about 500 sentinel clinics and hospitals in Tokyo.

Tokyo Metropolitan Institute of Public Health

TEL:81-3-3363-3213 FAX:81-3-5332-7365

e-mail:[www@tokyo-eiken.go.jp](mailto:www@tokyo-eiken.go.jp)

URL:[idsc.tokyo-eiken.go.jp/](http://idsc.tokyo-eiken.go.jp/)

---

Number of patients with the diseases which all physicians must report

Category	Diseases	Tokyo					Japan	
		34th	35th	36th	37th	Cum 2021	37th	Cum 2021
I	Ebola hemorrhagic fever							
	Crimean-Congo hemorrhagic fever							
	Smallpox							
	South American hemorrhagic fever							
	Plague							
	Marburg disease							
	Lassa fever							
II	Acute poliomyelitis							
	Tuberculosis	28	46	46	40	1,565	218	11,010
	Diphtheria							
	Severe Acute Respiratory Syndrome(SARS)							
	Middle East Respiratory Syndrome (MERS)							
	Avian influenza H5N1							
	Avian influenza H7N9							
III	Cholera							
	Shigellosis					2		6
	Enterohemorrhagic Escherichia coli infection	14	13	7	15	237	92	2,230
	Typhoid fever							
	Paratyphoid fever							
IV	Hepatitis E			1	1	83	8	327
	West Nile fever							
	Hepatitis A					10		51
	Echinococcosis					1		20
	Yellow fever							
	Psittacosis							7
	Omsk hemorrhagic fever							
	Relapsing fever							5
	Kyasanur forest disease							
	Q fever					1		1
	Rabies							
	Coccidioidomycosis							
	Monkeypox							
	Zika virus infection							
	Severe Fever with Thrombocytopenia Syndrome						1	92
	Hemorrhagic fever with renal syndrome							
	Western equine encephalitis							
	Tick-borne encephalitis							
	Anthrax							
	Chikungunya fever							
	Scrub typhus(Tsutsugamushi disease)					2		136
	Dengue fever							4
	Eastern equine encephalitis							
	Avian influenza (excluding H5N1 and H7N9)							
	Nipah virus infection							
	Japanese spotted fever					3	16	298
	Japanese encephalitis							
	Hantavirus pulmonary syndrome							
	Herpes B virus infection							
	Glanders							
	Brucellosis							1
	Venezuelan equine encephalitis							
	Hendra virus infection							
	Epidemic typhus							
Botulism					1		5	
Malaria	1		1		7		17	
Tularemia								
Lyme disease							17	
Lyssavirus infection(excluding rabies)								
Rift valley fever								
Melioidosis								
Legionellosis	4	2	3	6	98	49	1,396	
Leptospirosis					1	1	19	
Rocky mountain spotted fever								

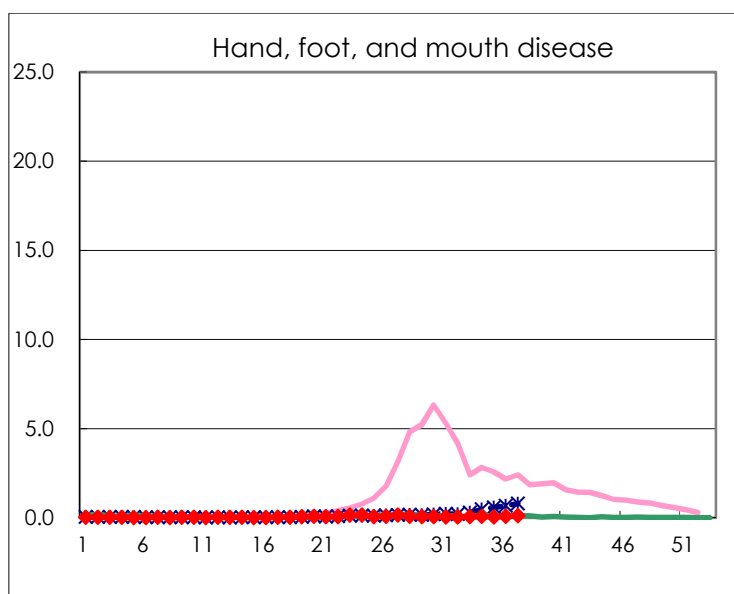
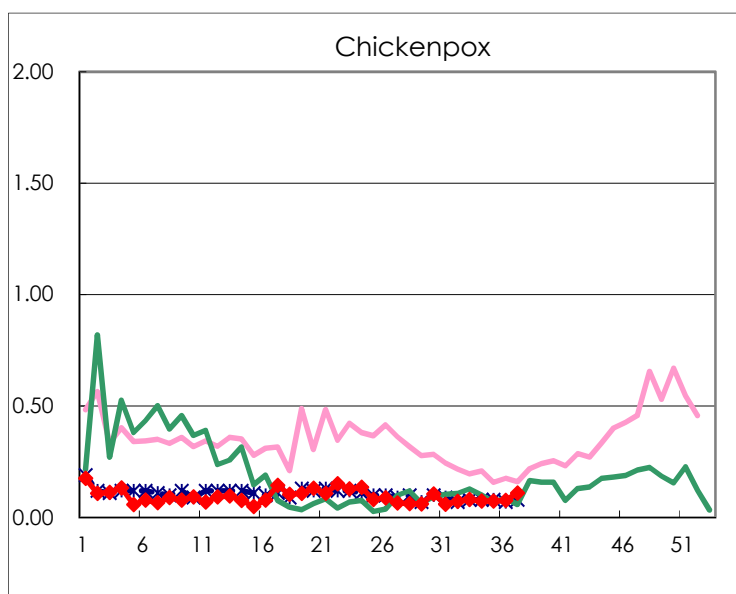
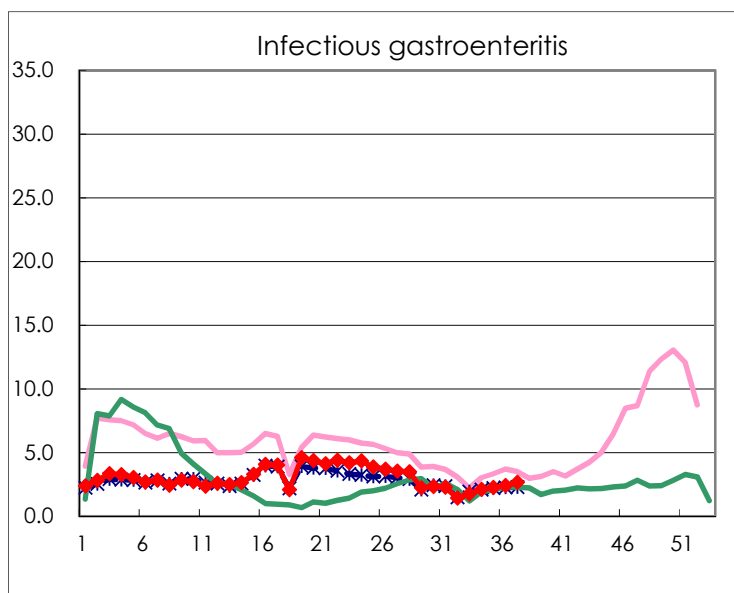
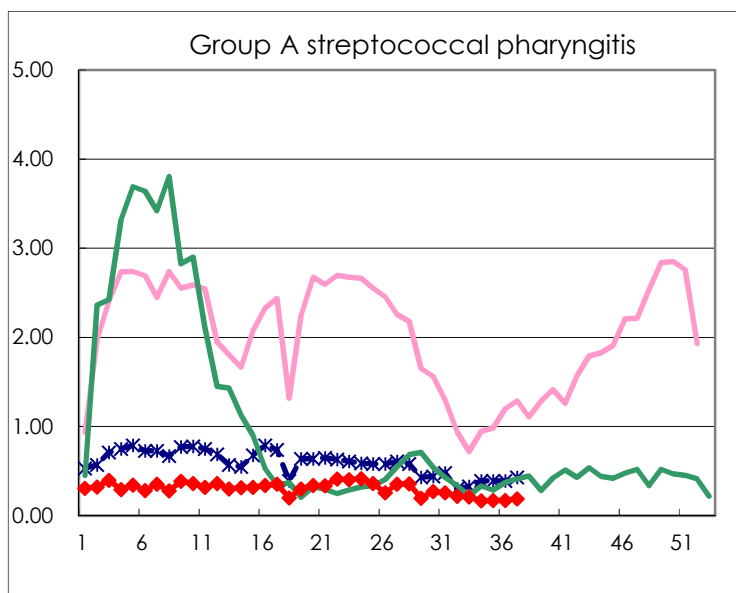
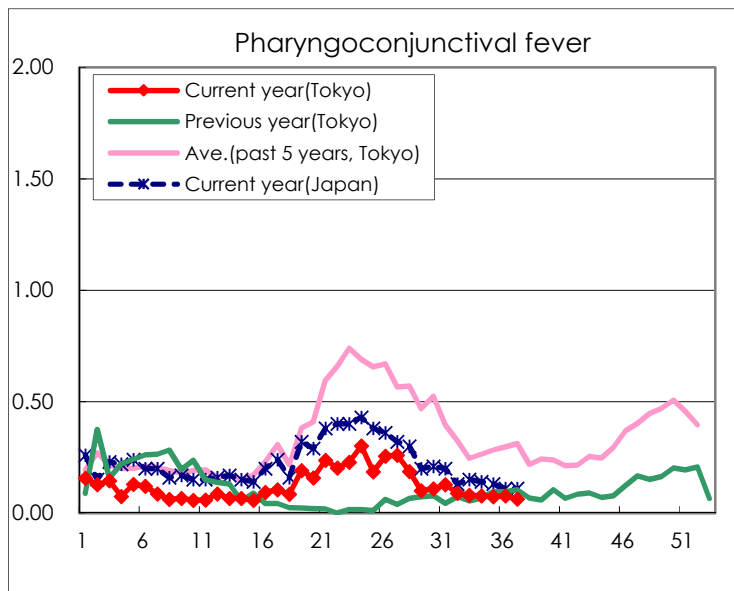
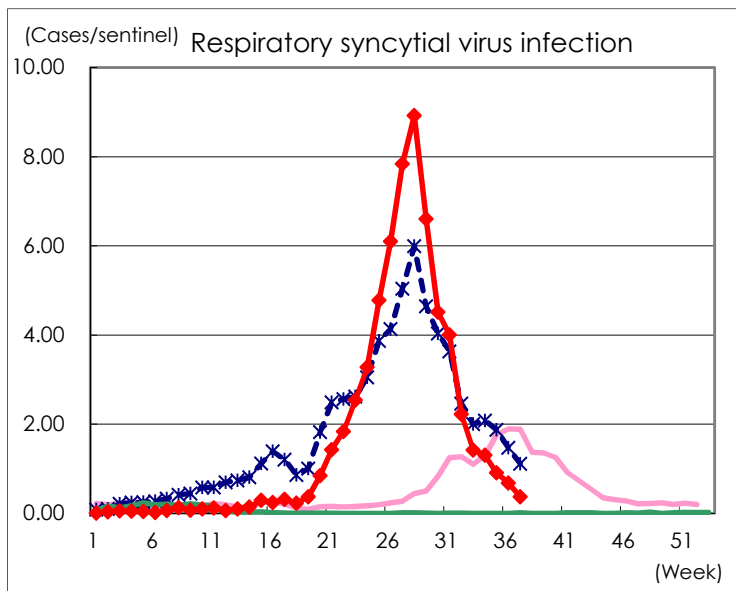
Category	Diseases	Tokyo				Japan		
		34th	35th	36th	37th	Cum 2021	37th	Cum 2021
V	Amebiasis	2		1	4	70	4	381
	Viral hepatitis(excluding hepatitis A and E)	1	1	2		35	2	137
	CRE infection	3	5	5		131	22	1,343
	Acute Flaccid Paralysis (excluding Acute poliomyelitis)					2		14
	Acute encephalitis(excluding JE and WNE)	1		1	1	16	4	241
	Cryptosporidiosis							4
	Creutzfeldt-Jakob disease			1		10	2	130
	Severe invasive streptococcal infections(TSLS)	2	1	2	2	50	10	431
	Acquired immunodeficiency syndrome (AIDS)	8	2	8	5	257	7	726
	Giardiasis					8		26
	Invasive <i>Haemophilus influenzae</i> disease		1		2	17	5	147
	Invasive meningococcal disease							2
	Invasive pneumococcal disease	7	3	3	2	100	12	971
	Varicella (limited to hospitalized case)	1		1		23	2	192
	Congenital rubella syndrome							1
	Syphilis	54	46	59	56	1,661	109	5,112
	Disseminated cryptococcosis				1	9	2	98
	Tetanus					2	1	66
	Vancomycin-resistant <i>S. aureus</i> infection							
	Vancomycin-resistant <i>Enterococcus</i> infection	1				8	1	87
	Pertussis	1	1		1	39	15	443
Rubella					1		8	
Measles							5	
MDRA infection		1			1		3	

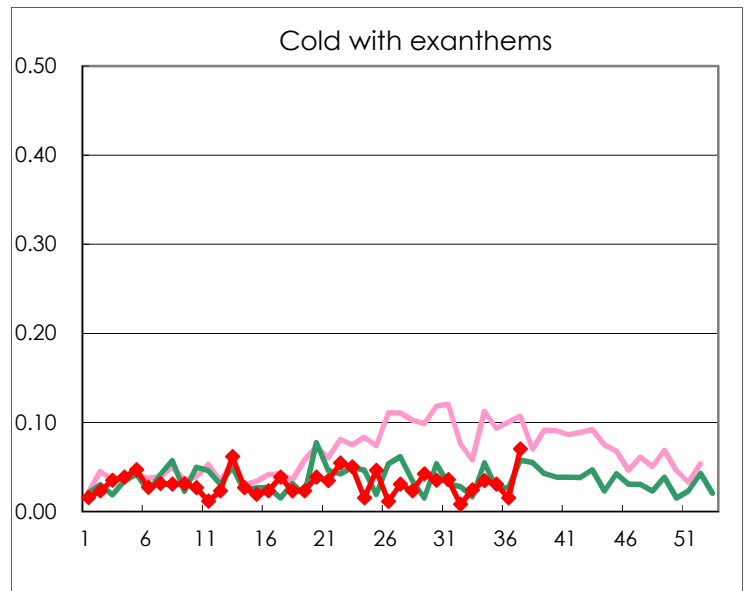
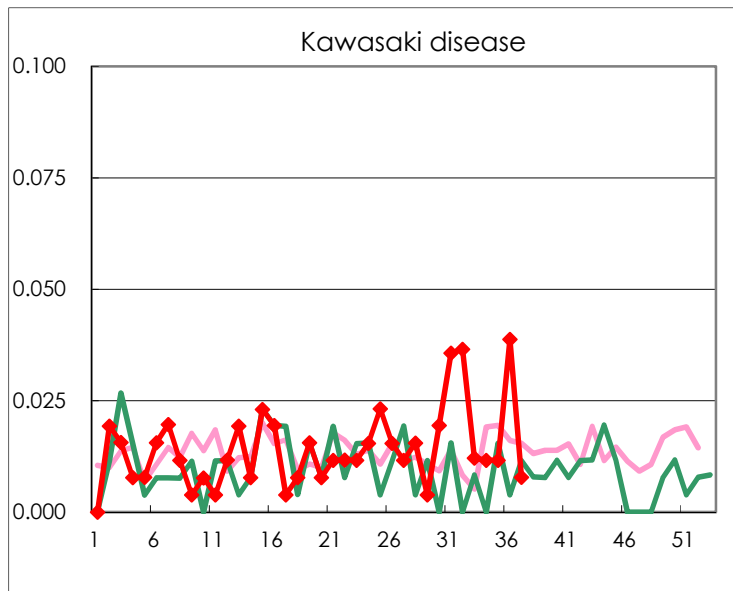
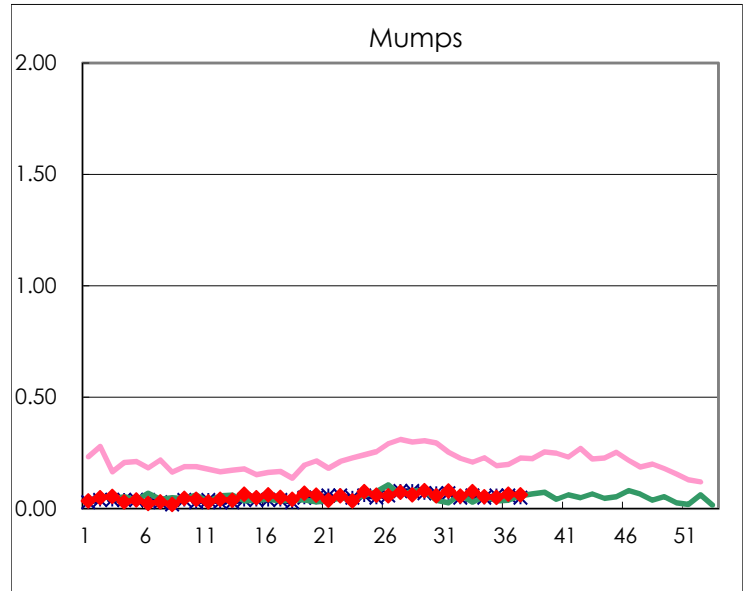
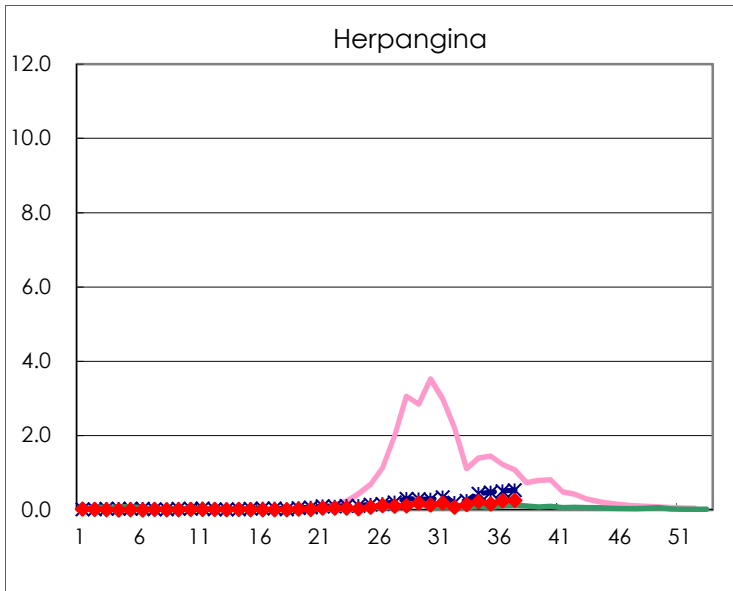
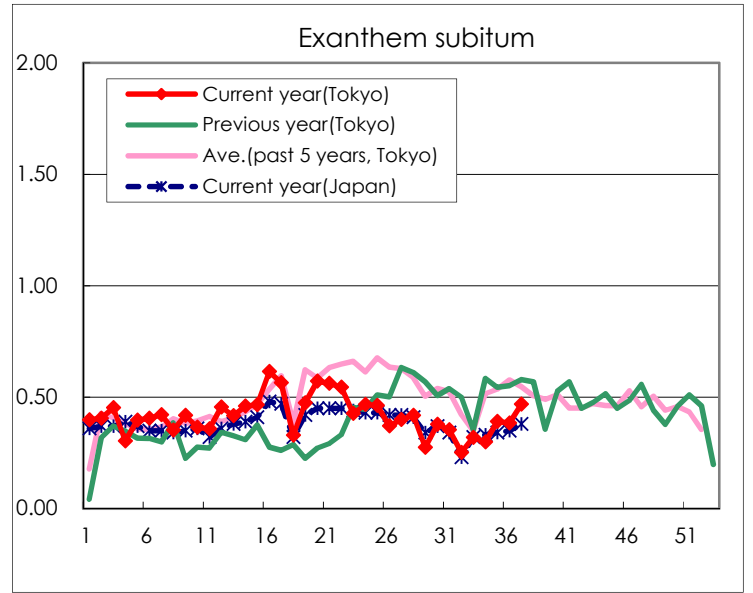
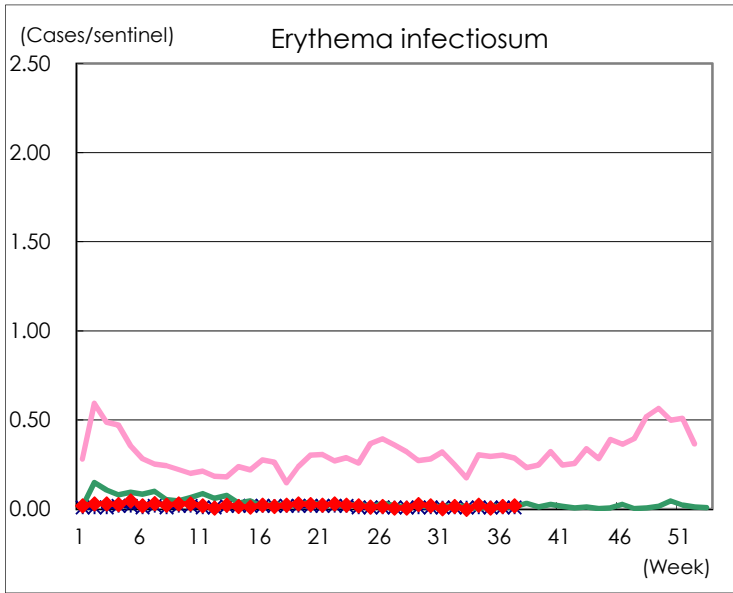
Number of patients with the diseases to be reported  
by the designated clinics and hospitals

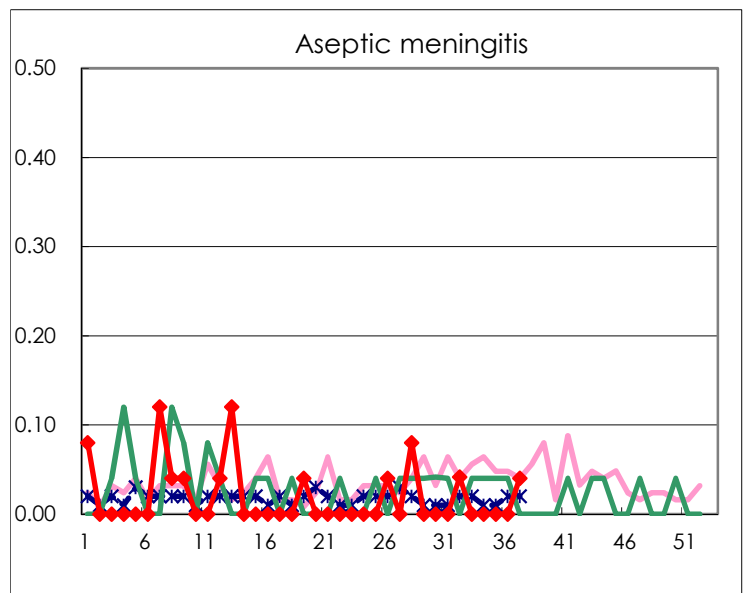
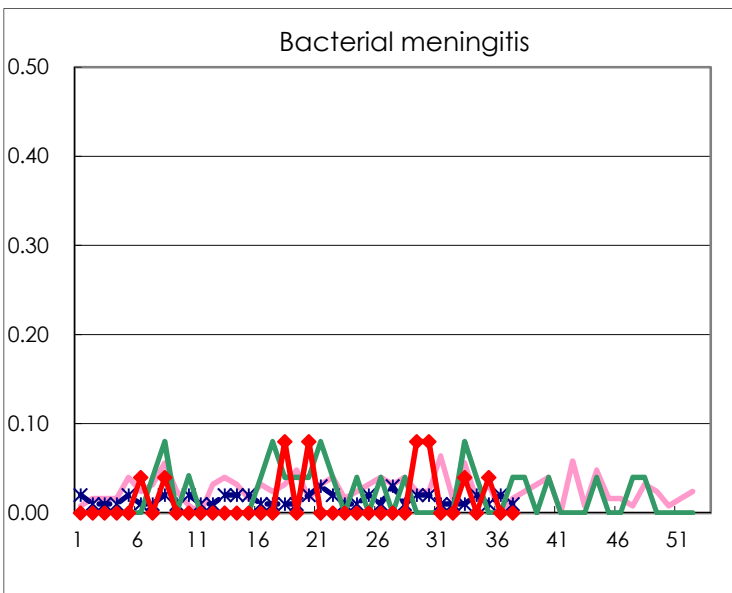
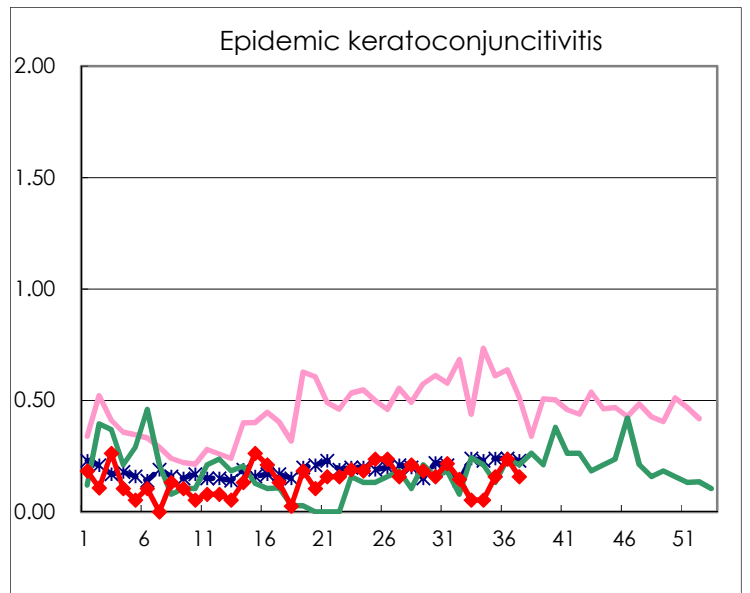
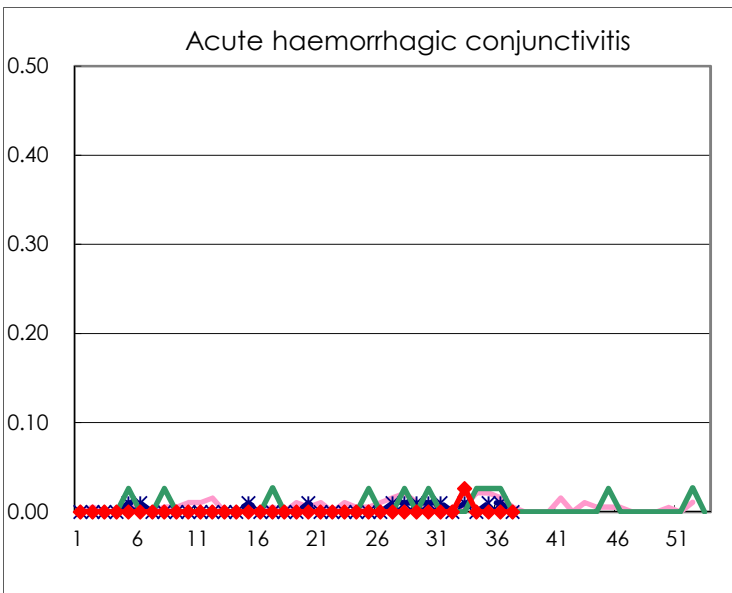
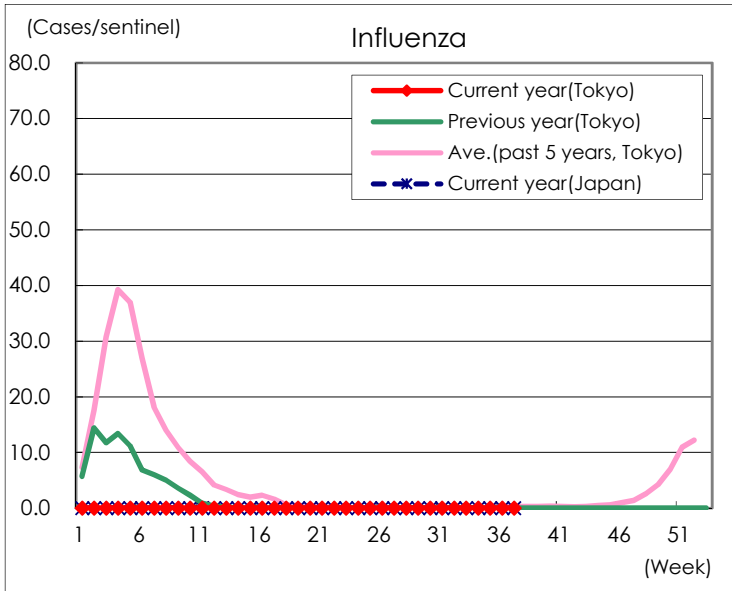
Diseases	Tokyo				
	34th	35th	36th	37th	/sentinel
Respiratory syncytial virus infection	337	235	176	95	0.37
Pharyngoconjunctival fever	20	19	20	16	0.06
Group A streptococcal pharyngitis	43	44	44	49	0.19
Infectious gastroenteritis	540	582	620	679	2.65
Chickenpox	19	19	20	28	0.11
Hand, foot, and mouth disease	22	12	19	30	0.12
Erythema infectiosum	6	2	4	5	0.02
Exanthem subitum	77	101	99	120	0.47
Herpangina	57	43	64	67	0.26
Mumps	14	13	17	16	0.06
Kawasaki disease	3	3	10	2	0.01
Cold with exanthems	9	8	4	18	0.07
Influenza					
Acute hemorrhagic conjunctivitis					
Epidemic keratoconjunctivitis	2	6	9	6	0.16
Bacterial meningitis		1			
Aseptic meningitis				1	0.04
<i>Mycoplasma pneumoniae</i>		1		1	0.04
Chlamydial pneumonia (excluding psittacosis)					
Infectious gastroenteritis (only by Rotavirus)					
Influenza-Associated Hospitalizations					

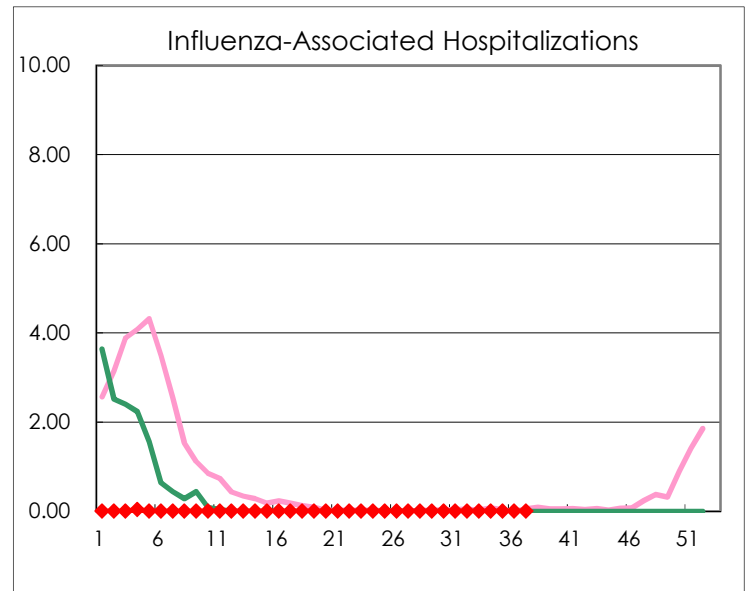
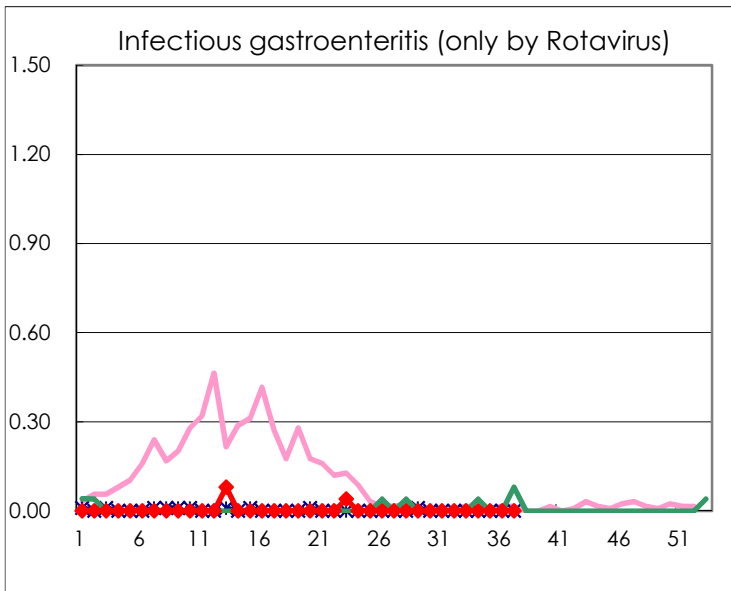
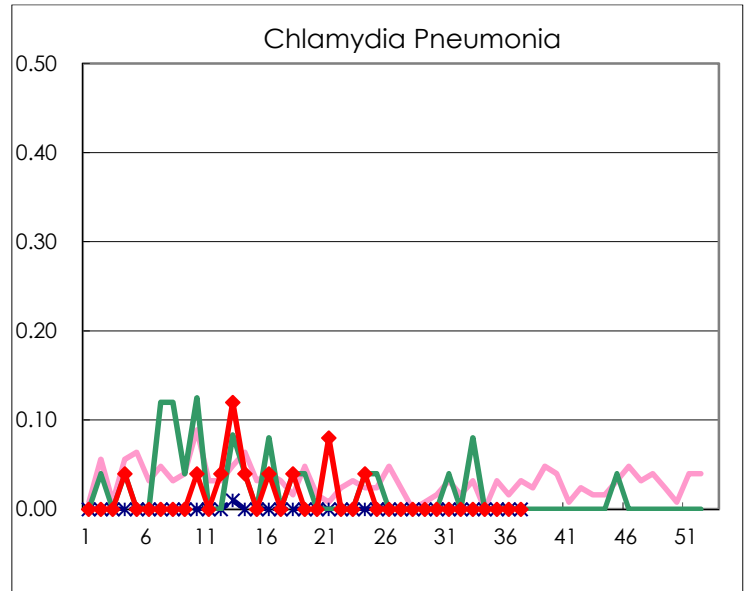
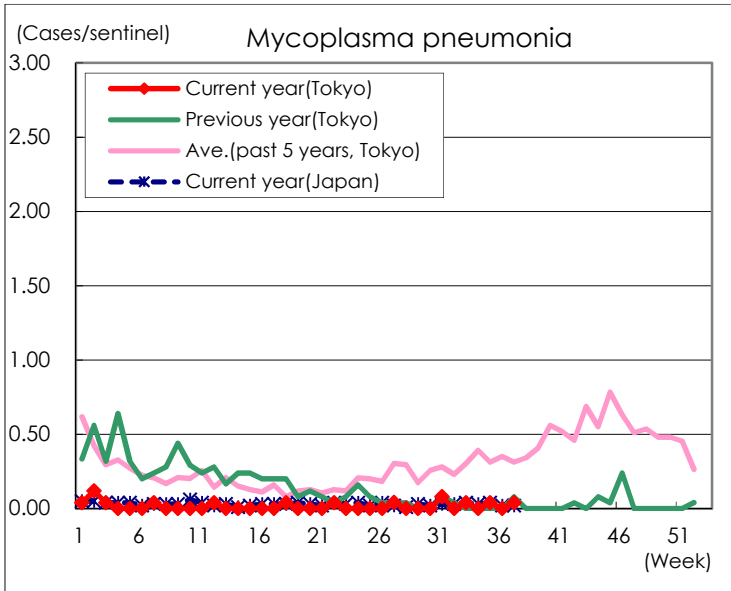
( Blank means 0. )

# Disease Trend Graph (weekly reported cases per sentinel in comparison)









Number of sentinel facilities for weekly reporting		
Types of sentinels	Number of sentinels	Sentinels having reported
Pediatric	264	256
Influenza	419	403
Ophthalmic	39	38
Specially-designated	25	25