
INFECTIOUS DISEASES WEEKLY REPORT

TOKYO IDWR

Tokyo Metropolitan Infectious Disease Surveillance Center

30 September 2021 / Number 38
(9/20 ~ 9/26)

Surveillance System in Tokyo, Japan

The infectious diseases which all physicians must report
All physicians must report to health centers the incidence of the diseases which are shown at page one. Health centers electronically report the individual cases to Tokyo Metropolitan Infectious Disease Surveillance Center.

The infectious diseases required to be reported by the sentinels
The numbers of patients who visit the sentinel clinics or hospitals during a week are reported to health centers in Tokyo. And they electronically report the numbers to Tokyo Metropolitan Infectious Disease Surveillance Center. We have about 500 sentinel clinics and hospitals in Tokyo.

Tokyo Metropolitan Institute of Public Health

TEL:81-3-3363-3213 FAX:81-3-5332-7365

e-mail:www@tokyo-eiken.go.jp

URL:idsc.tokyo-eiken.go.jp/

Number of patients with the diseases which all physicians must report

Category	Diseases	Tokyo					Japan	
		35th	36th	37th	38th	Cum 2021	38th	Cum 2021
I	Ebola hemorrhagic fever							
	Crimean-Congo hemorrhagic fever							
	Smallpox							
	South American hemorrhagic fever							
	Plague							
	Marburg disease							
	Lassa fever							
II	Acute poliomyelitis							
	Tuberculosis	46	48	43	18	1,588	145	11,258
	Diphtheria							
	Severe Acute Respiratory Syndrome(SARS)							
	Middle East Respiratory Syndrome (MERS)							
	Avian influenza H5N1							
	Avian influenza H7N9							
III	Cholera							
	Shigellosis					2		6
	Enterohemorrhagic Escherichia coli infection	14	7	16	13	254	67	2,314
	Typhoid fever							
	Paratyphoid fever							
IV	Hepatitis E		1	1	1	84	4	331
	West Nile fever							
	Hepatitis A					10	2	54
	Echinococcosis					1		20
	Yellow fever							
	Psittacosis							7
	Omsk hemorrhagic fever							
	Relapsing fever							5
	Kyasanur forest disease							
	Q fever					1		1
	Rabies							
	Coccidioidomycosis							
	Monkeypox							
	Zika virus infection							
	Severe Fever with Thrombocytopenia Syndrome						2	94
	Hemorrhagic fever with renal syndrome							
	Western equine encephalitis							
	Tick-borne encephalitis							
	Anthrax							
	Chikungunya fever							
	Scrub typhus(Tsutsugamushi disease)					2		137
	Dengue fever							4
	Eastern equine encephalitis							
	Avian influenza (excluding H5N1 and H7N9)							
	Nipah virus infection							
	Japanese spotted fever					3	7	306
	Japanese encephalitis							
	Hantavirus pulmonary syndrome							
	Herpes B virus infection							
	Glanders							
	Brucellosis							1
	Venezuelan equine encephalitis							
	Hendra virus infection							
	Epidemic typhus							
Botulism					1		5	
Malaria		1				7	17	
Tularemia								
Lyme disease							17	
Lyssavirus infection(excluding rabies)								
Rift valley fever								
Melioidosis								
Legionellosis	3	3	7	1	101	35	1,446	
Leptospirosis					1		19	
Rocky mountain spotted fever								

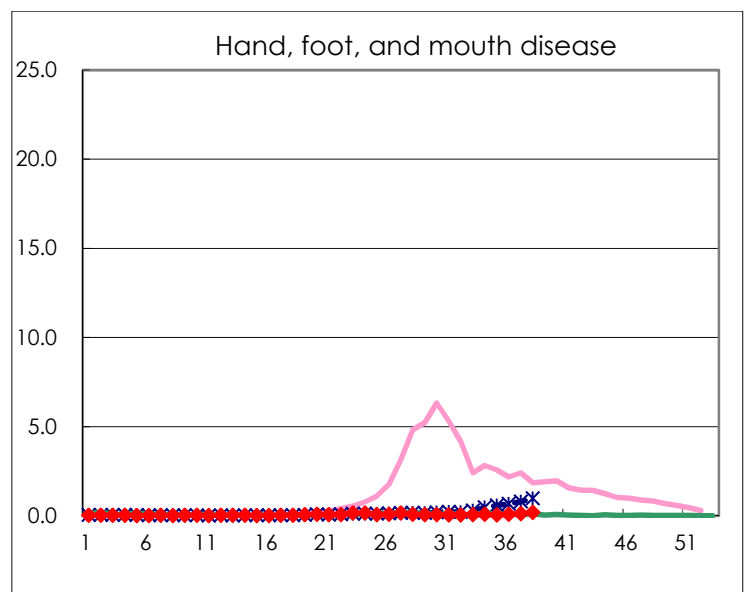
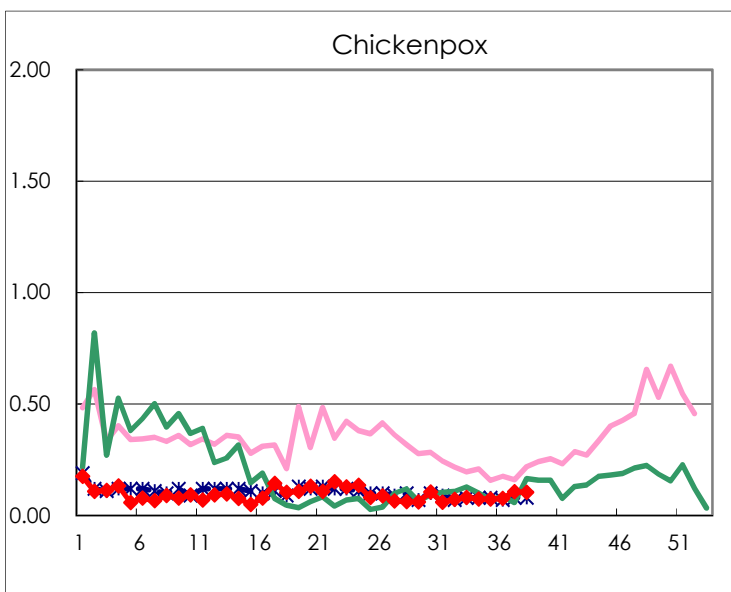
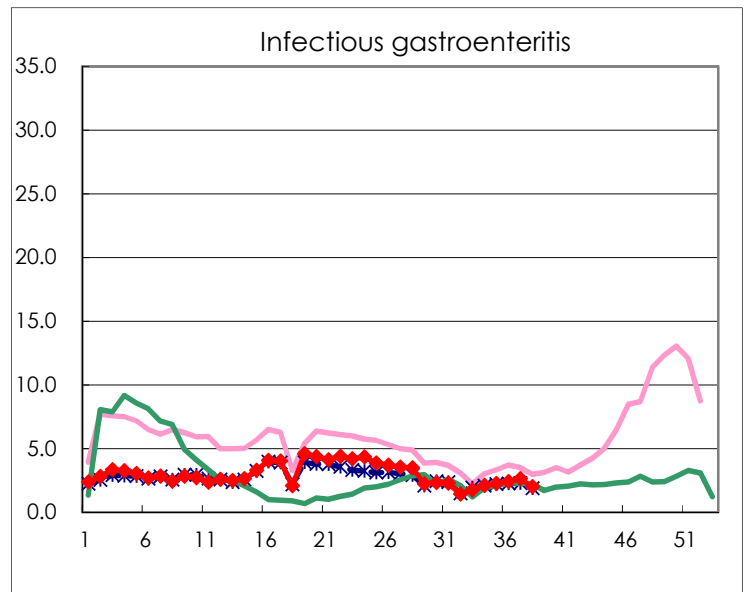
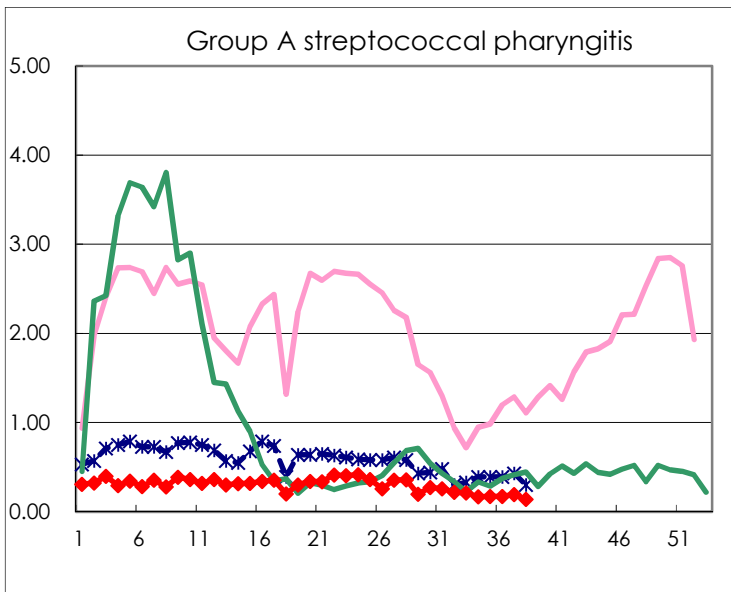
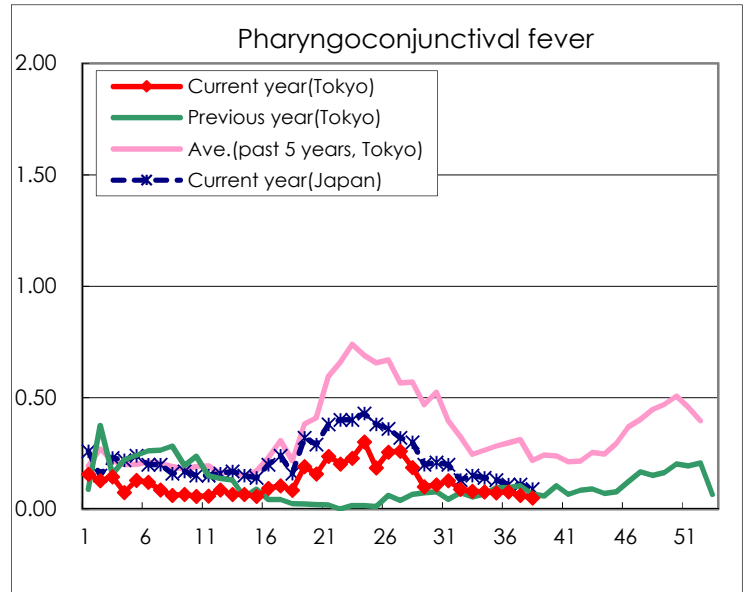
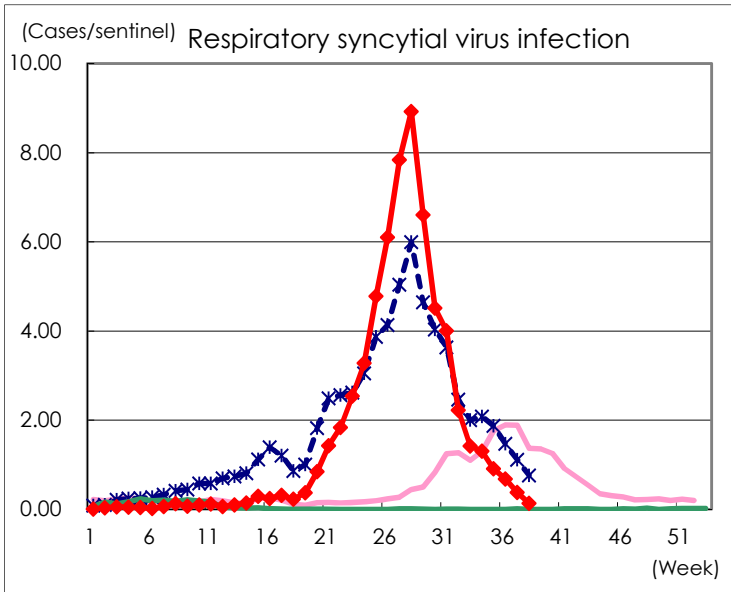
Category	Diseases	Tokyo					Japan	
		35th	36th	37th	38th	Cum 2021	38th	Cum 2021
V	Amebiasis		1	4	1	71	8	391
	Viral hepatitis(excluding hepatitis A and E)	1	2		1	36		139
	CRE infection	5	5		4	136	22	1,378
	Acute Flaccid Paralysis (excluding Acute poliomyelitis)					2		15
	Acute encephalitis(excluding JE and WNE)		1	1		16	1	243
	Cryptosporidiosis							4
	Creutzfeldt-Jakob disease		1			10	1	133
	Severe invasive streptococcal infections(TSLS)	1	2	2		50	5	439
	Acquired immunodeficiency syndrome (AIDS)	2	8	5	7	264	5	740
	Giardiasis					8		26
	Invasive <i>Haemophilus influenzae</i> disease	1		2		17		147
	Invasive meningococcal disease							2
	Invasive pneumococcal disease	3	3	2		100	5	981
	Varicella (limited to hospitalized case)		1			23	5	198
	Congenital rubella syndrome							1
	Syphilis	49	60	57	29	1,695	66	5,248
	Disseminated cryptococcosis			1	1	10	1	102
	Tetanus					2	1	70
	Vancomycin-resistant <i>S. aureus</i> infection							
	Vancomycin-resistant <i>Enterococcus</i> infection					8	1	90
	Pertussis	1		1		39	8	449
Rubella					1	1	9	
Measles							4	
MDRA infection	1				1		3	

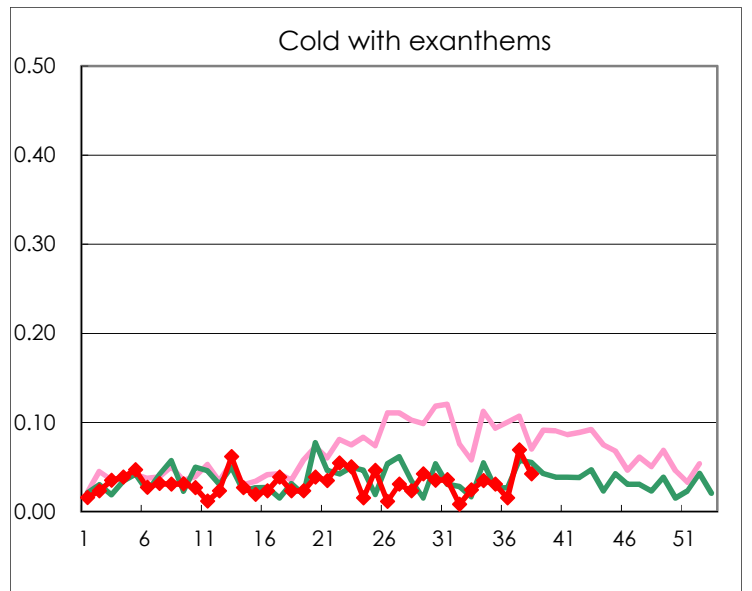
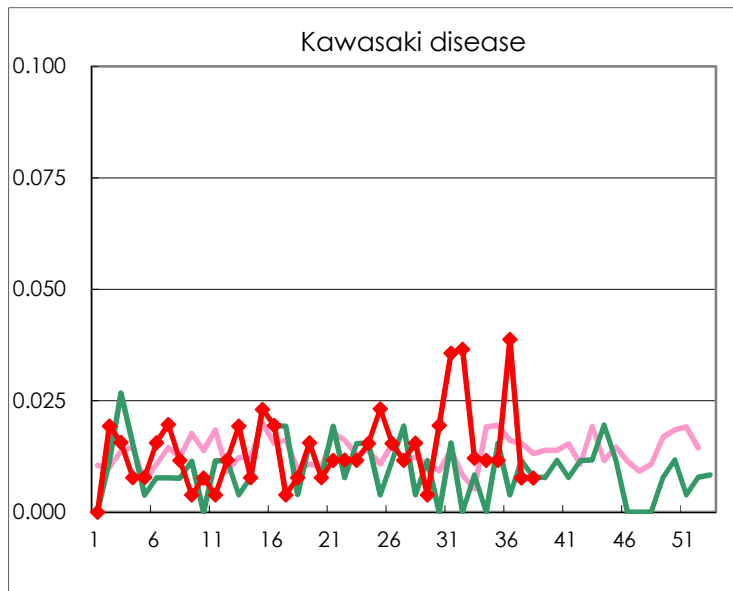
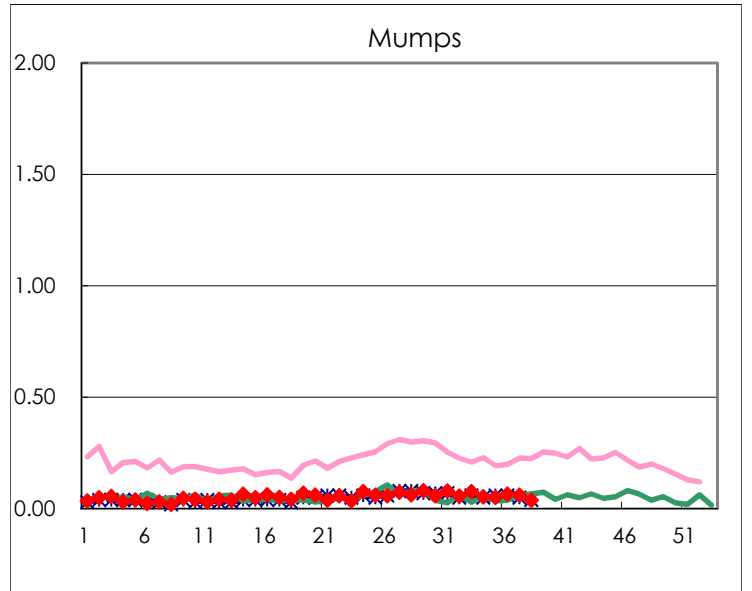
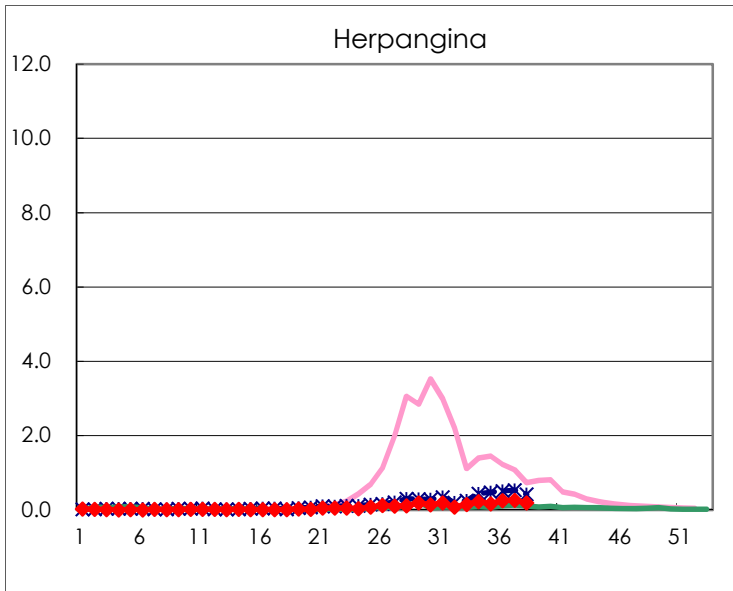
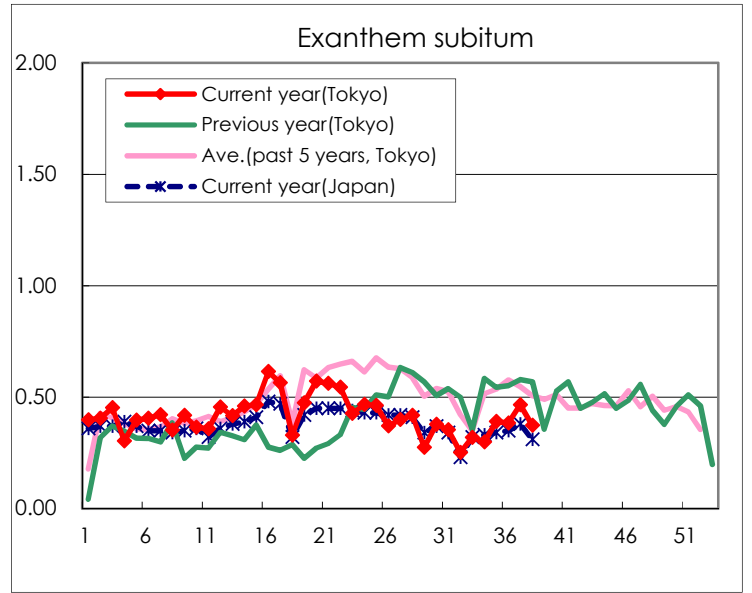
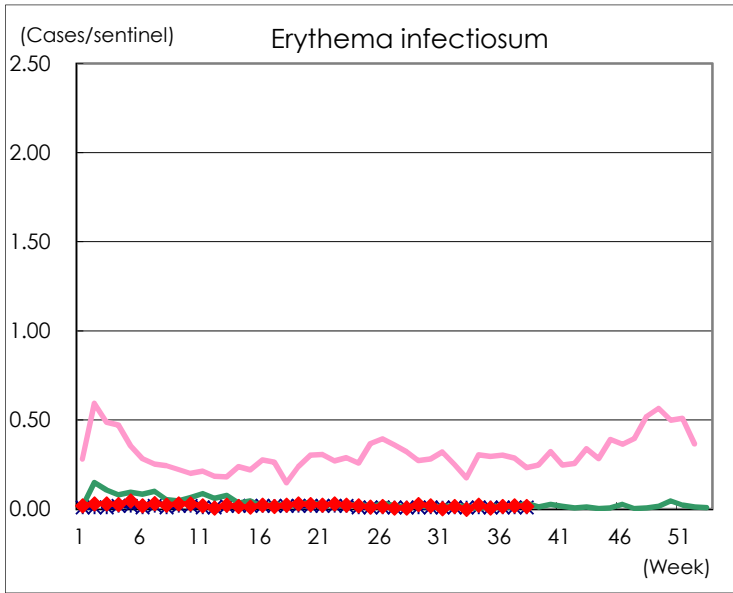
Number of patients with the diseases to be reported
by the designated clinics and hospitals

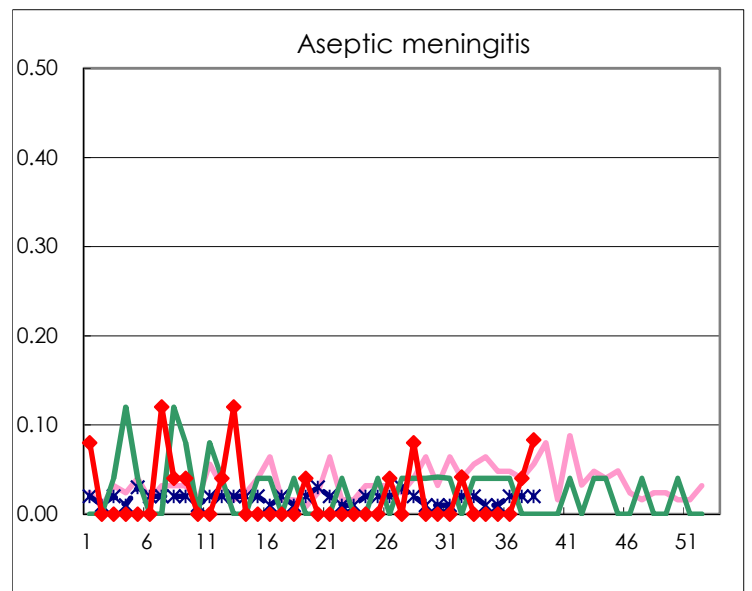
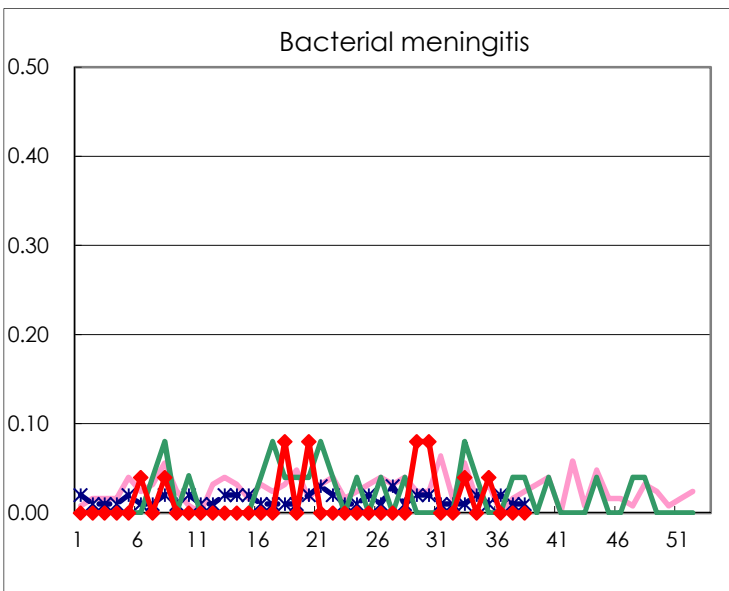
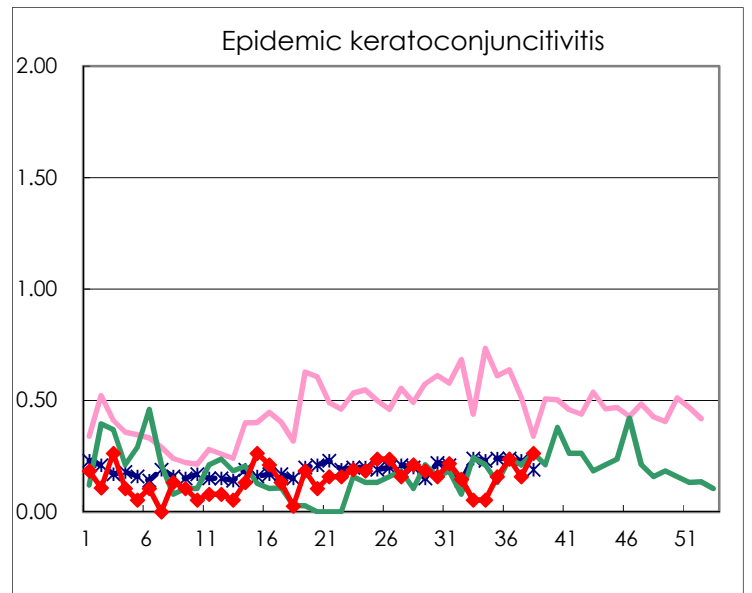
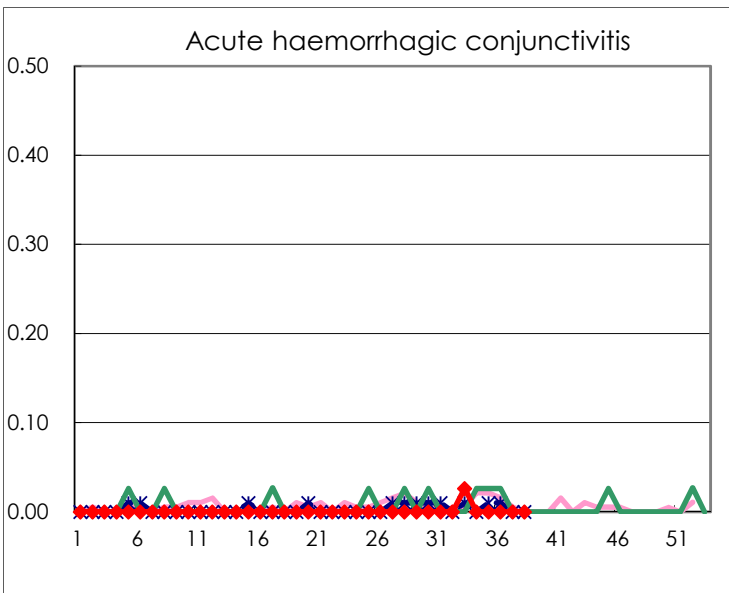
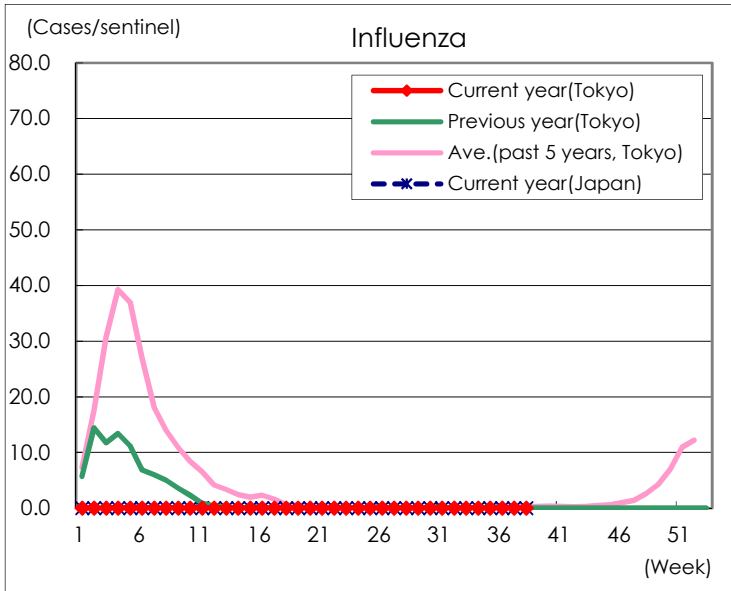
Diseases	Tokyo				
	35th	36th	37th	38th	/sentinel
Respiratory syncytial virus infection	235	176	99	35	0.13
Pharyngoconjunctival fever	19	20	16	13	0.05
Group A streptococcal pharyngitis	44	44	50	36	0.14
Infectious gastroenteritis	582	620	685	517	1.99
Chickenpox	19	20	28	27	0.10
Hand, foot, and mouth disease	12	19	30	47	0.18
Erythema infectiosum	2	4	5	4	0.02
Exanthem subitum	101	99	121	97	0.37
Herpangina	43	64	68	49	0.19
Mumps	13	17	16	10	0.04
Kawasaki disease	3	10	2	2	0.01
Cold with exanthems	8	4	18	11	0.04
Influenza				1	0.00
Acute hemorrhagic conjunctivitis					
Epidemic keratoconjunctivitis	6	9	6	10	0.26
Bacterial meningitis	1				
Aseptic meningitis			1	2	0.08
Mycoplasma pneumonia	1		1		
Chlamydial pneumonia (excluding psittacosis)					
Infectious gastroenteritis (only by Rotavirus)					
Influenza-Associated Hospitalizations					

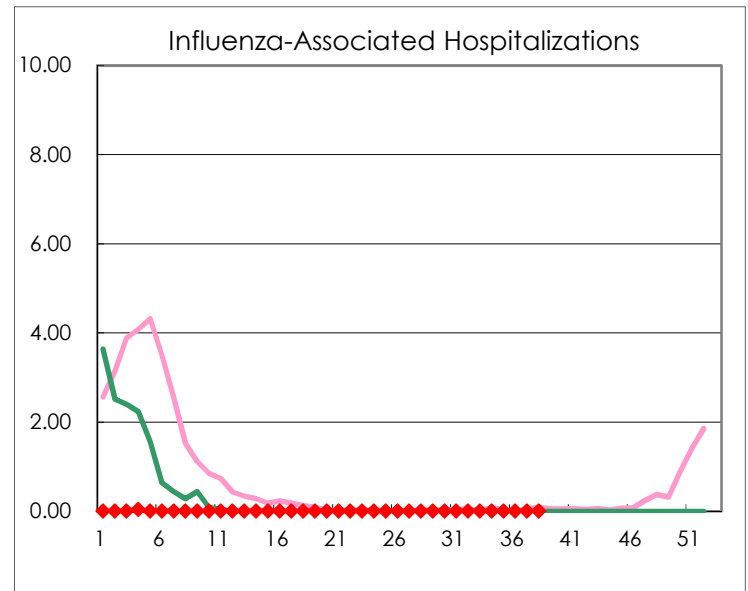
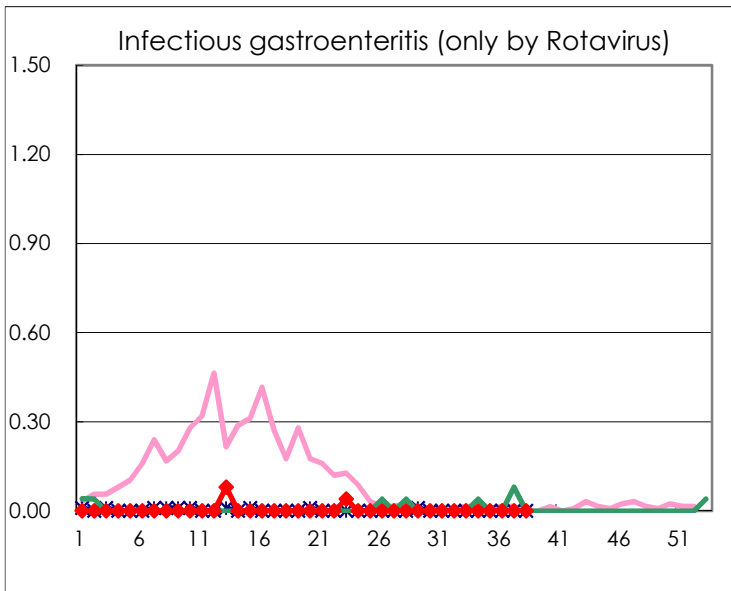
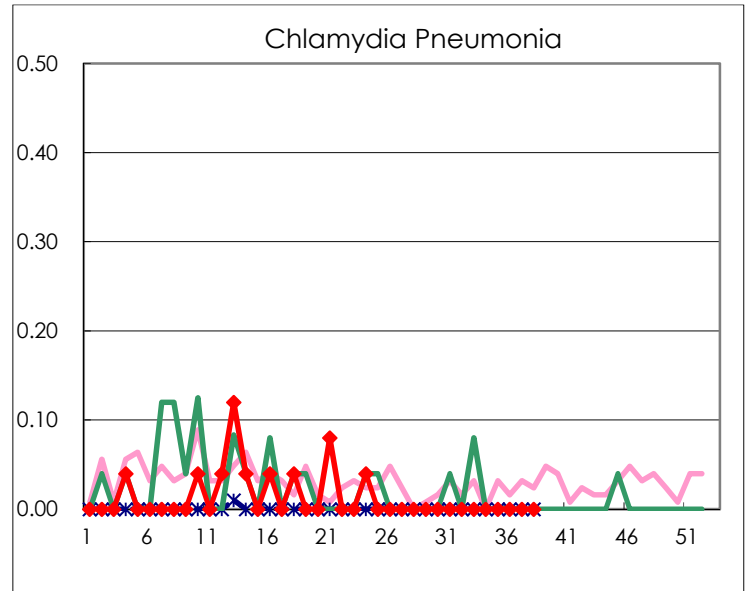
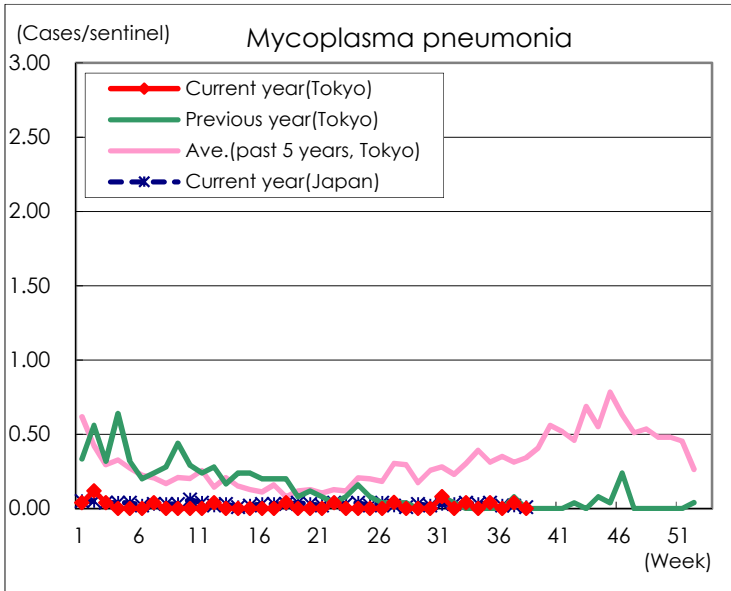
(Blank means 0.)

Disease Trend Graph (weekly reported cases per sentinel in comparison)









Number of sentinel facilities for weekly reporting		
Types of sentinels	Number of sentinels	Sentinels having reported
Pediatric	264	260
Influenza	419	410
Ophthalmic	39	38
Specially-designated	25	24