
INFECTIOUS DISEASES WEEKLY REPORT

TOKYO IDWR

Tokyo Metropolitan Infectious Disease Surveillance Center

14 October 2021 / Number 40
(10/4 ~ 10/10)

Surveillance System in Tokyo, Japan

The infectious diseases which all physicians must report
All physicians must report to health centers the incidence of the diseases which are shown at page one. Health centers electronically report the individual cases to Tokyo Metropolitan Infectious Disease Surveillance Center.

The infectious diseases required to be reported by the sentinels
The numbers of patients who visit the sentinel clinics or hospitals during a week are reported to health centers in Tokyo. And they electronically report the numbers to Tokyo Metropolitan Infectious Disease Surveillance Center. We have about 500 sentinel clinics and hospitals in Tokyo.

Tokyo Metropolitan Institute of Public Health

TEL:81-3-3363-3213 FAX:81-3-5332-7365

e-mail:www@tokyo-eiken.go.jp

URL:idsc.tokyo-eiken.go.jp/

Number of patients with the diseases which all physicians must report

Category	Diseases	Tokyo					Japan	
		37th	38th	39th	40th	Cum 2021	40th	Cum 2021
I	Ebola hemorrhagic fever							
	Crimean-Congo hemorrhagic fever							
	Smallpox							
	South American hemorrhagic fever							
	Plague							
	Marburg disease							
	Lassa fever							
II	Acute poliomyelitis							
	Tuberculosis	46	20	39	58	1,691	235	11,935
	Diphtheria							
	Severe Acute Respiratory Syndrome(SARS)							
	Middle East Respiratory Syndrome (MERS)							
	Avian influenza H5N1							
	Avian influenza H7N9							
III	Cholera							
	Shigellosis					2		6
	Enterohemorrhagic Escherichia coli infection	17	16	9	2	269	47	2,473
	Typhoid fever							
	Paratyphoid fever							
IV	Hepatitis E	2	1	4		89		345
	West Nile fever							
	Hepatitis A			1		11		57
	Echinococcosis					1		21
	Yellow fever							
	Psittacosis							8
	Omsk hemorrhagic fever							
	Relapsing fever						1	6
	Kyasanur forest disease							
	Q fever					1		1
	Rabies							
	Coccidioidomycosis							
	Monkeypox							
	Zika virus infection							
	Severe Fever with Thrombocytopenia Syndrome						1	98
	Hemorrhagic fever with renal syndrome							
	Western equine encephalitis							
	Tick-borne encephalitis							
	Anthrax							
	Chikungunya fever							
	Scrub typhus(Tsutsugamushi disease)					2	2	141
	Dengue fever							5
	Eastern equine encephalitis							
	Avian influenza (excluding H5N1 and H7N9)							
	Nipah virus infection							
	Japanese spotted fever					3	27	352
	Japanese encephalitis						1	1
	Hantavirus pulmonary syndrome							
	Herpes B virus infection							
	Glanders							
	Brucellosis							1
	Venezuelan equine encephalitis							
	Hendra virus infection							
	Epidemic typhus							
Botulism					1		5	
Malaria			1		8		19	
Tularemia								
Lyme disease							19	
Lyssavirus infection(excluding rabies)								
Rift valley fever								
Melioidosis								
Legionellosis	7	2	3		106	38	1,550	
Leptospirosis				1	2	4	24	
Rocky mountain spotted fever								

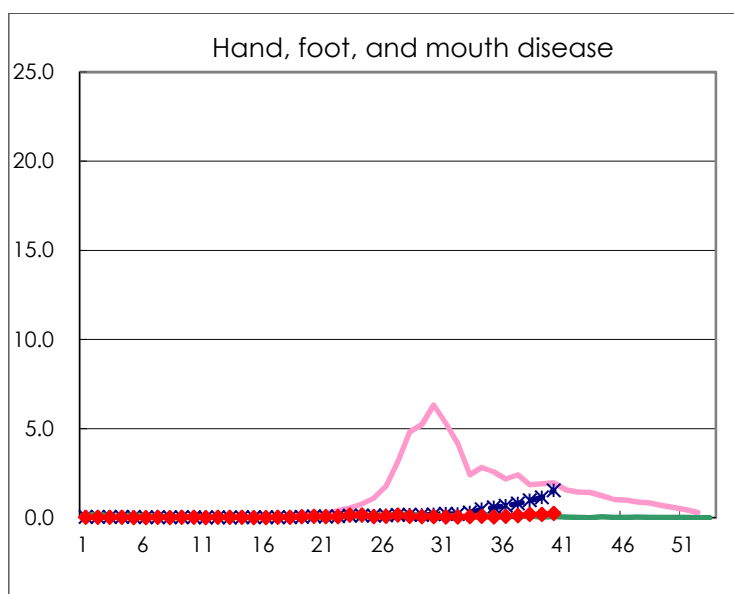
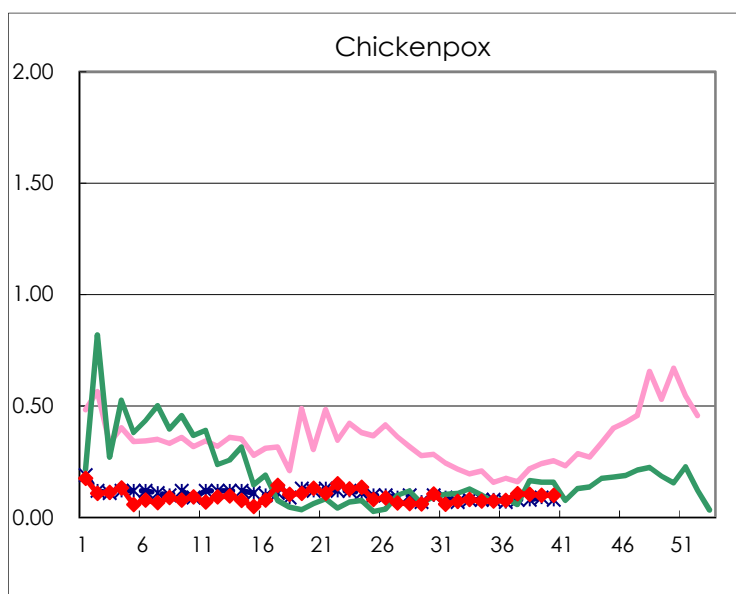
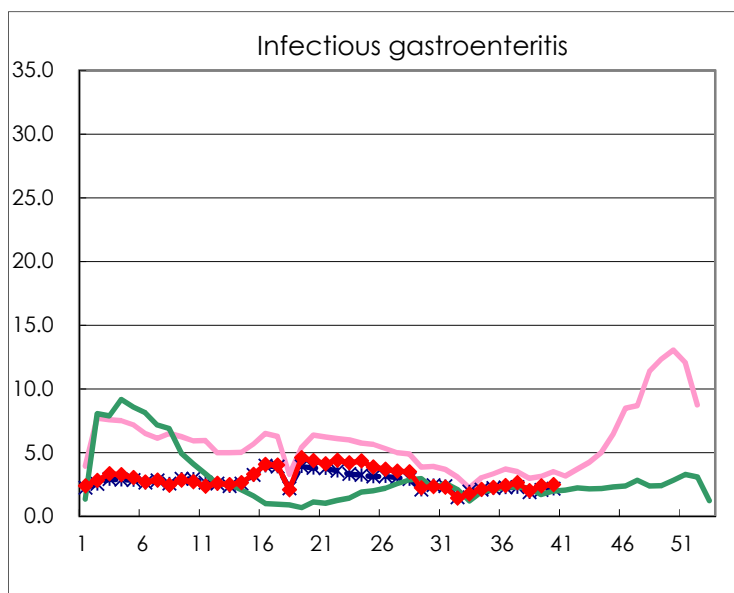
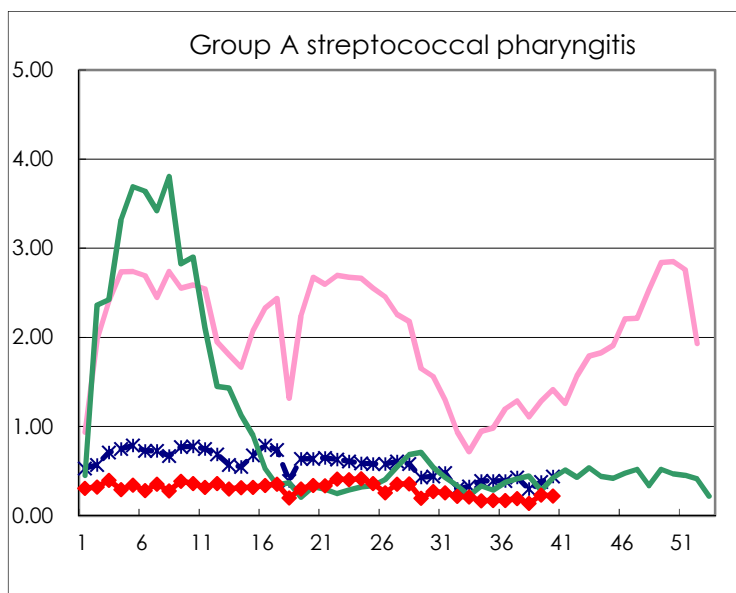
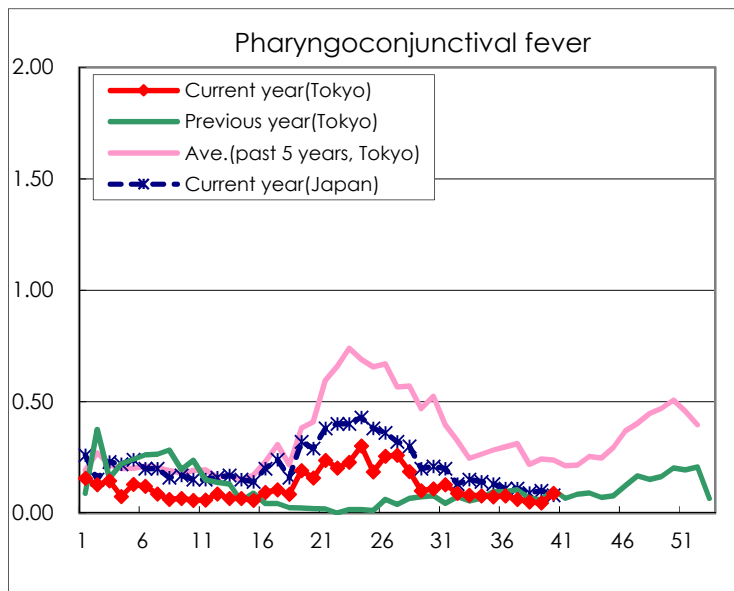
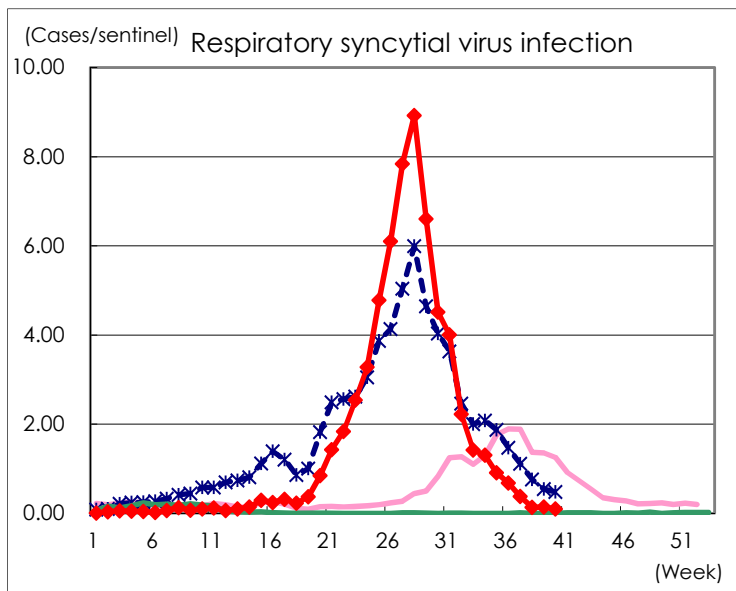
Category	Diseases	Tokyo					Japan	
		37th	38th	39th	40th	Cum 2021	40th	Cum 2021
V	Amebiasis	5	1	1	2	75	3	410
	Viral hepatitis(excluding hepatitis A and E)	1	1	3		40	2	150
	CRE infection	1	5	5	2	147	18	1,464
	Acute Flaccid Paralysis (excluding Acute poliomyelitis)					2		17
	Acute encephalitis(excluding JE and WNE)	1		1	1	18	6	259
	Cryptosporidiosis						1	5
	Creutzfeldt-Jakob disease					10	1	138
	Severe invasive streptococcal infections(TSLS)	2		6	1	57	11	471
	Acquired immunodeficiency syndrome (AIDS)	7	10	6	11	286	14	794
	Giardiasis					8	2	29
	Invasive <i>Haemophilus influenzae</i> disease	2				17		149
	Invasive meningococcal disease							2
	Invasive pneumococcal disease	2	2	2	3	107	8	1,022
	Varicella (limited to hospitalized case)					23	1	209
	Congenital rubella syndrome							1
	Syphilis	58	30	51	48	1,797	113	5,632
	Disseminated cryptococcosis	1	1	2		12	2	109
	Tetanus					2	2	75
	Vancomycin-resistant <i>S. aureus</i> infection							
	Vancomycin-resistant <i>Enterococcus</i> infection				1	9		94
	Pertussis	1		2	2	43	9	469
Rubella			1		2		10	
Measles							4	
MDRA infection					1		3	

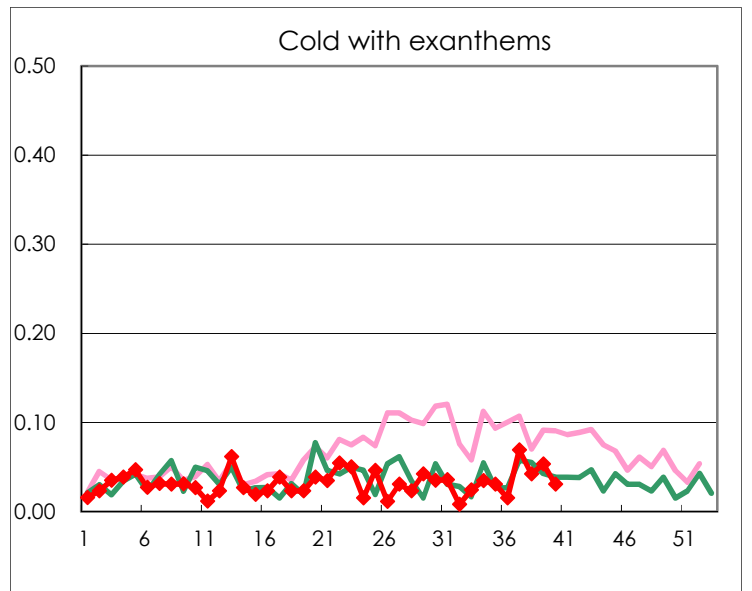
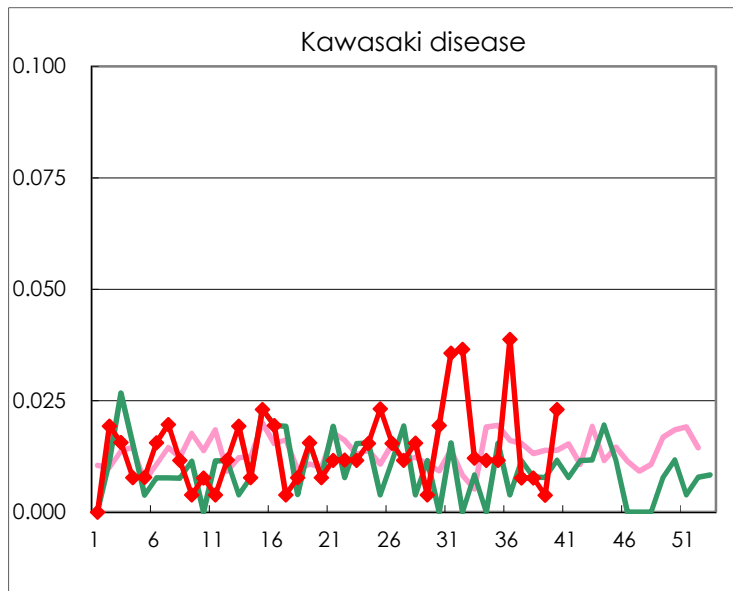
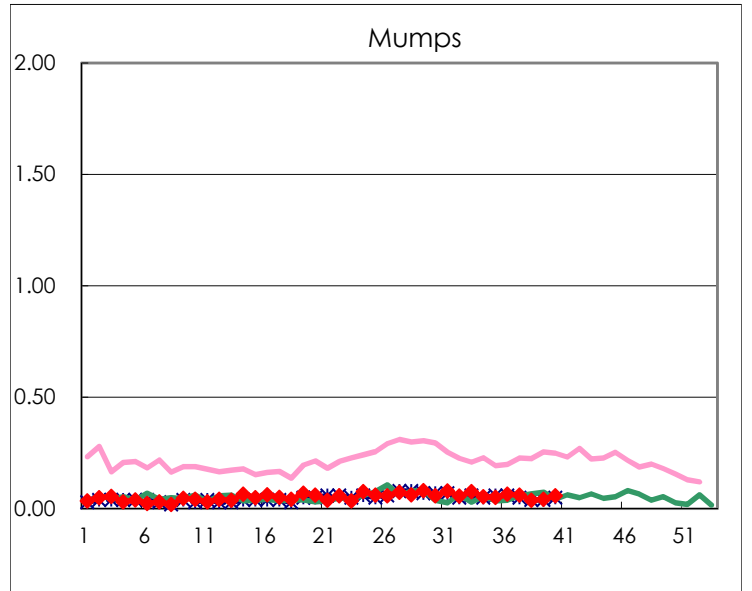
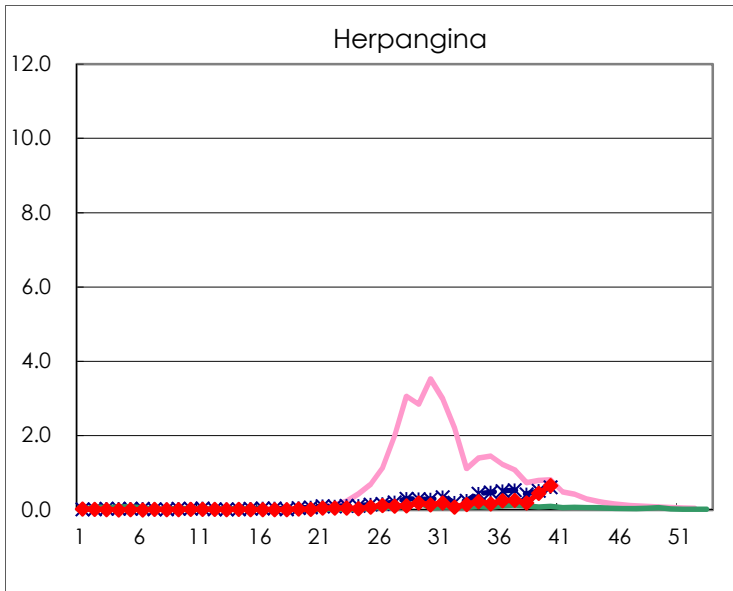
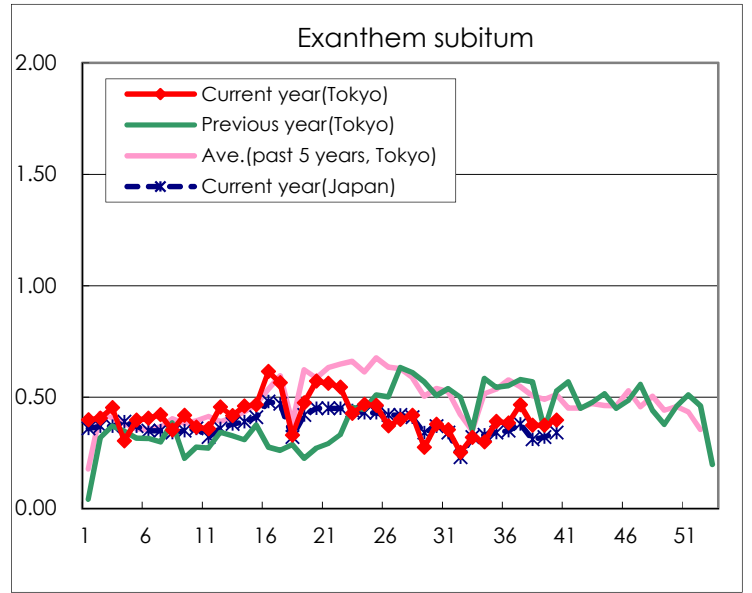
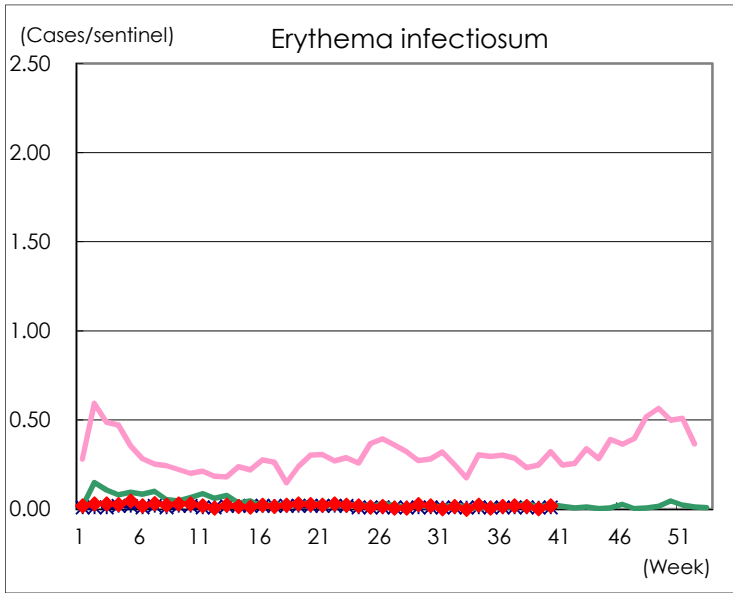
Number of patients with the diseases to be reported
by the designated clinics and hospitals

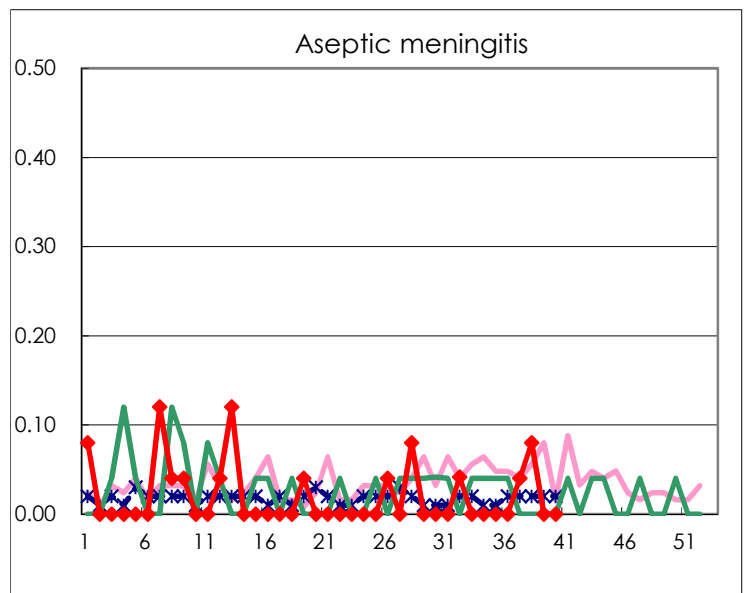
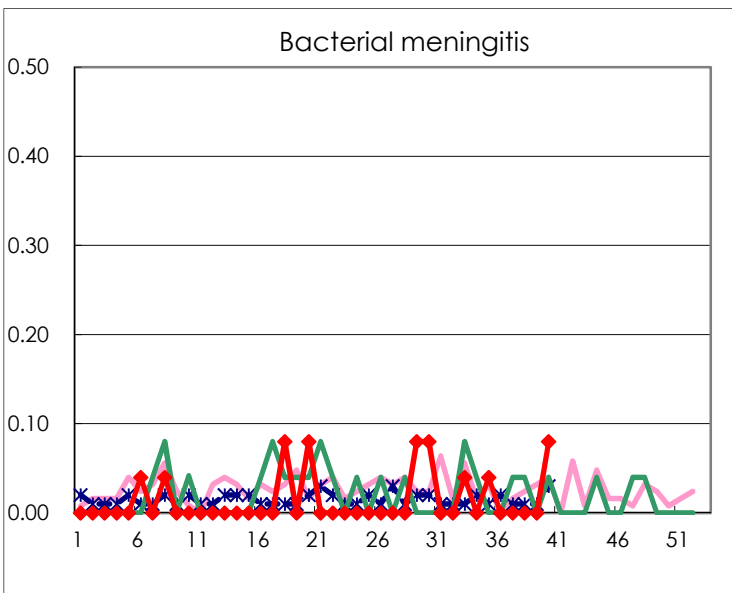
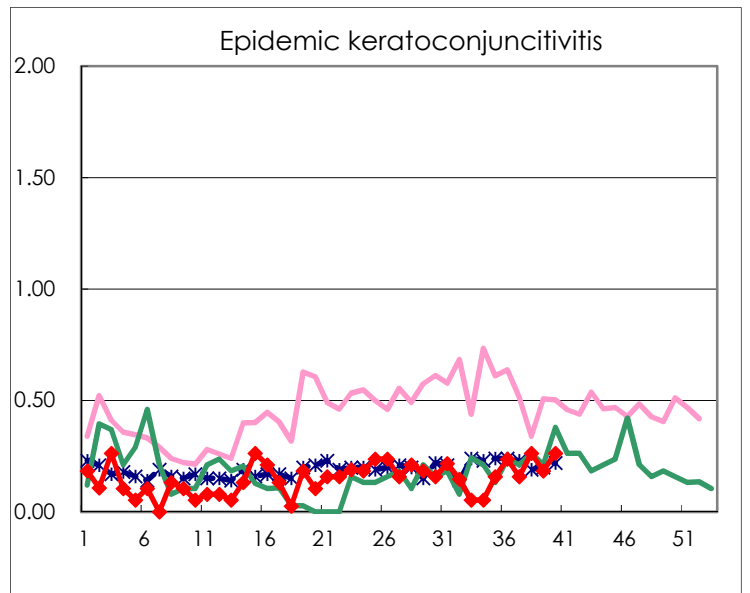
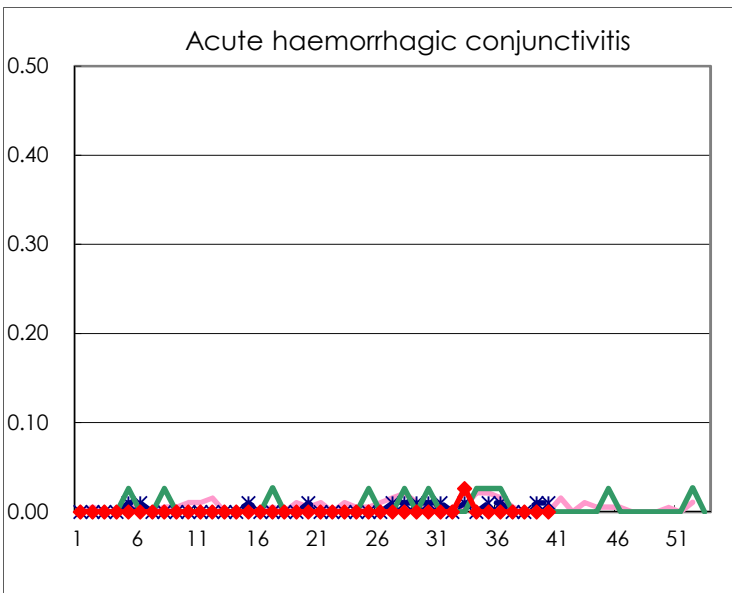
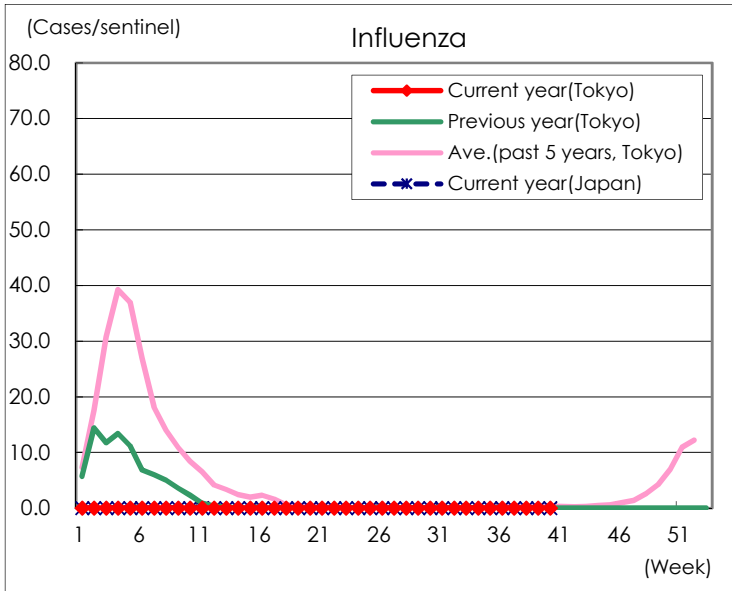
Diseases	Tokyo				
	37th	38th	39th	40th	/sentinel
Respiratory syncytial virus infection	99	35	37	26	0.10
Pharyngoconjunctival fever	16	13	12	23	0.09
Group A streptococcal pharyngitis	50	36	61	58	0.22
Infectious gastroenteritis	685	517	623	645	2.48
Chickenpox	28	27	26	26	0.10
Hand, foot, and mouth disease	30	47	50	62	0.24
Erythema infectiosum	5	4	1	5	0.02
Exanthem subitum	121	97	98	103	0.40
Herpangina	68	49	117	170	0.65
Mumps	16	10	11	15	0.06
Kawasaki disease	2	2	1	6	0.02
Cold with exanthems	18	11	14	8	0.03
Influenza		1			
Acute hemorrhagic conjunctivitis					
Epidemic keratoconjunctivitis	6	10	7	10	0.26
Bacterial meningitis				2	0.08
Aseptic meningitis	1	2			
<i>Mycoplasma pneumoniae</i>	1		1		
Chlamydial pneumonia (excluding psittacosis)				1	0.04
Infectious gastroenteritis (only by Rotavirus)					
Influenza-Associated Hospitalizations					

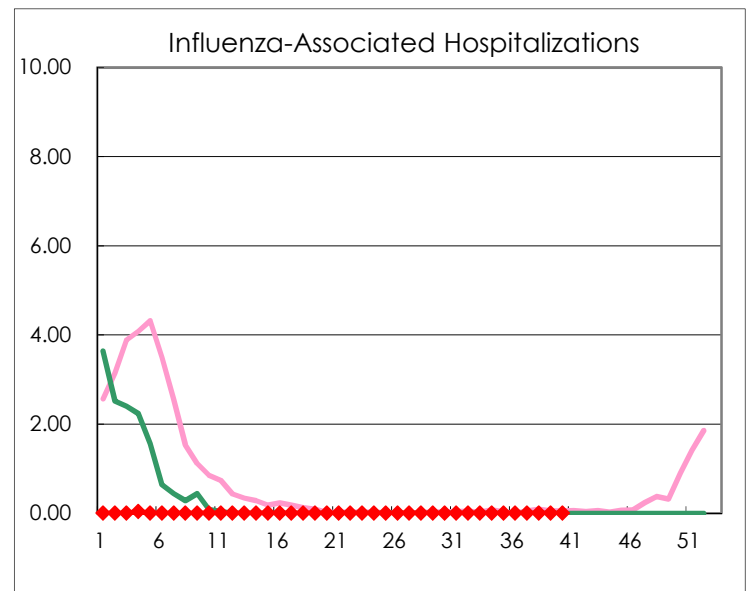
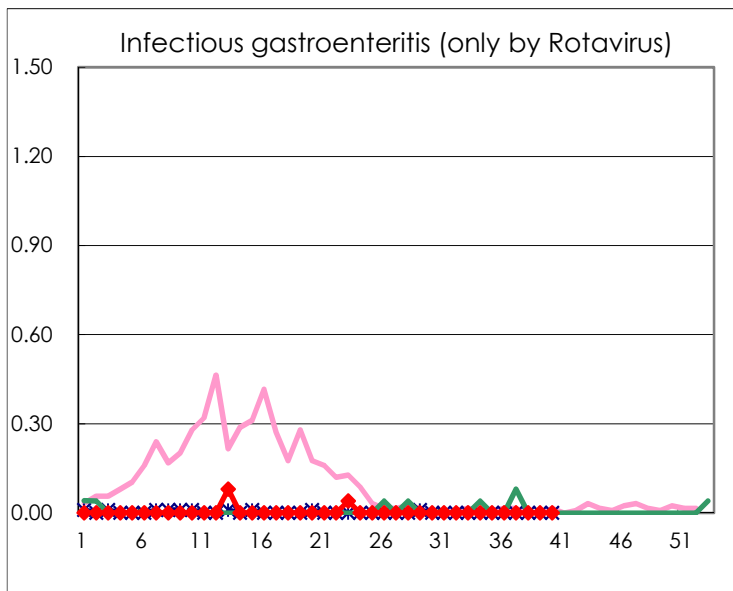
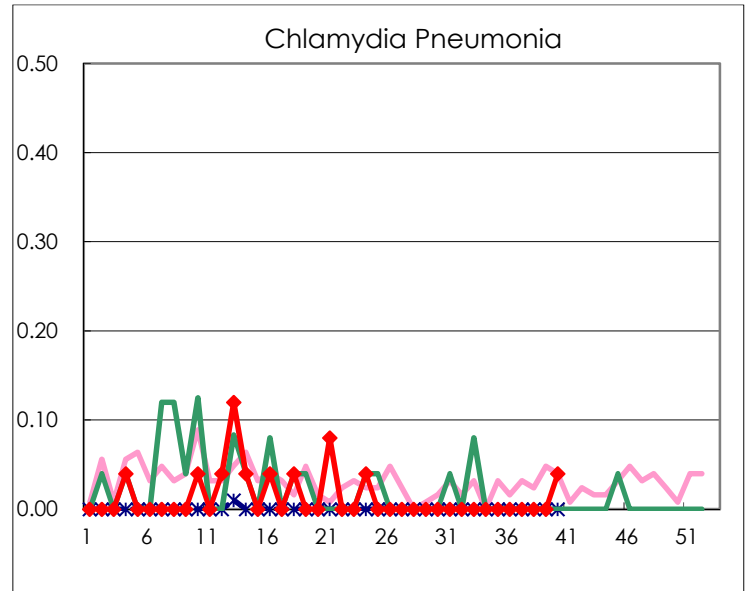
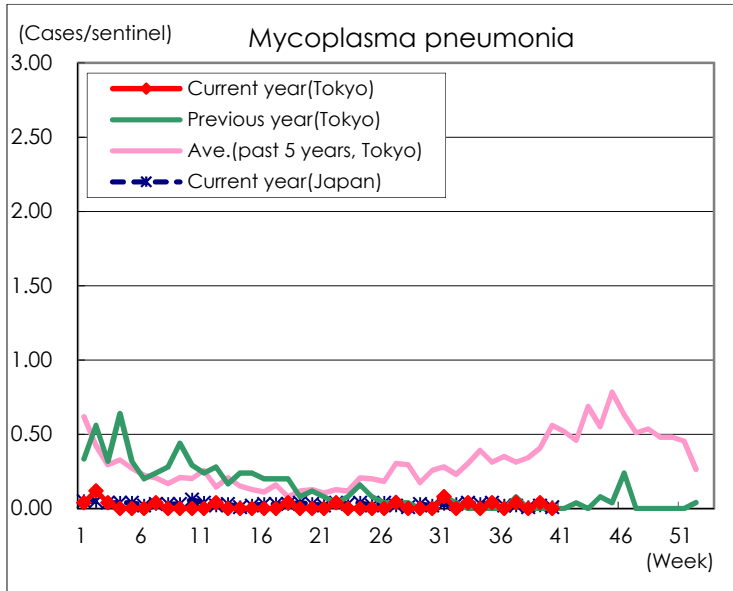
(Blank means 0.)

Disease Trend Graph (weekly reported cases per sentinel in comparison)









Number of sentinel facilities for weekly reporting		
Types of sentinels	Number of sentinels	Sentinels having reported
Pediatric	264	260
Influenza	419	410
Ophthalmic	39	38
Specially-designated	25	25