
INFECTIOUS DISEASES WEEKLY REPORT

TOKYO IDWR

Tokyo Metropolitan Infectious Disease Surveillance Center

21 October 2021 / Number 41
(10/11 ~ 10/17)

Surveillance System in Tokyo, Japan

The infectious diseases which all physicians must report
All physicians must report to health centers the incidence of the diseases which are shown at page one. Health centers electronically report the individual cases to Tokyo Metropolitan Infectious Disease Surveillance Center.

The infectious diseases required to be reported by the sentinels
The numbers of patients who visit the sentinel clinics or hospitals during a week are reported to health centers in Tokyo. And they electronically report the numbers to Tokyo Metropolitan Infectious Disease Surveillance Center. We have about 500 sentinel clinics and hospitals in Tokyo.

Tokyo Metropolitan Institute of Public Health

TEL:81-3-3363-3213 FAX:81-3-5332-7365

e-mail:www@tokyo-eiken.go.jp

URL:idsc.tokyo-eiken.go.jp/

Number of patients with the diseases which all physicians must report

Category	Diseases	Tokyo					Japan	
		38th	39th	40th	41st	Cum 2021	41st	Cum 2021
I	Ebola hemorrhagic fever							
	Crimean-Congo hemorrhagic fever							
	Smallpox							
	South American hemorrhagic fever							
	Plague							
	Marburg disease							
	Lassa fever							
II	Acute poliomyelitis							
	Tuberculosis	24	42	59	43	1,743	279	12,330
	Diphtheria							
	Severe Acute Respiratory Syndrome(SARS)							
	Middle East Respiratory Syndrome (MERS)							
	Avian influenza H5N1							
	Avian influenza H7N9							
III	Cholera							
	Shigellosis					2		6
	Enterohemorrhagic Escherichia coli infection	16	9	2	5	274	90	2,566
	Typhoid fever						1	1
	Paratyphoid fever							
IV	Hepatitis E	1	4			89	3	348
	West Nile fever							
	Hepatitis A		1			11	1	59
	Echinococcosis					1	1	22
	Yellow fever							
	Psittacosis							8
	Omsk hemorrhagic fever							
	Relapsing fever							6
	Kyasanur forest disease							
	Q fever					1		1
	Rabies							
	Coccidioidomycosis							
	Monkeypox							
	Zika virus infection							
	Severe Fever with Thrombocytopenia Syndrome						3	101
	Hemorrhagic fever with renal syndrome							
	Western equine encephalitis							
	Tick-borne encephalitis							
	Anthrax							
	Chikungunya fever							
	Scrub typhus(Tsutsugamushi disease)					2	1	143
	Dengue fever							5
	Eastern equine encephalitis							
	Avian influenza (excluding H5N1 and H7N9)							
	Nipah virus infection							
	Japanese spotted fever					3	20	374
	Japanese encephalitis							2
	Hantavirus pulmonary syndrome							
	Herpes B virus infection							
	Glanders							
	Brucellosis							1
	Venezuelan equine encephalitis							
	Hendra virus infection							
	Epidemic typhus							
Botulism					1		5	
Malaria		1			8	1	20	
Tularemia								
Lyme disease							19	
Lyssavirus infection(excluding rabies)								
Rift valley fever								
Melioidosis								
Legionellosis	2	4		8	116	50	1,616	
Leptospirosis			1		2		26	
Rocky mountain spotted fever								

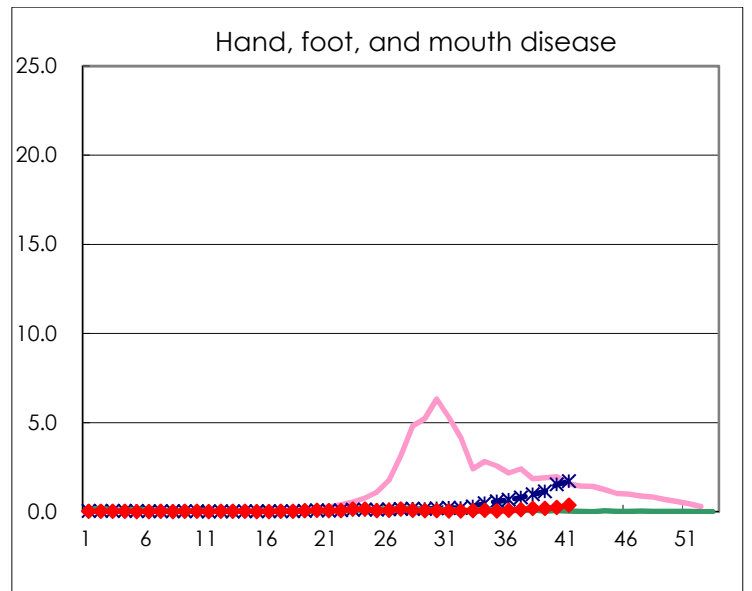
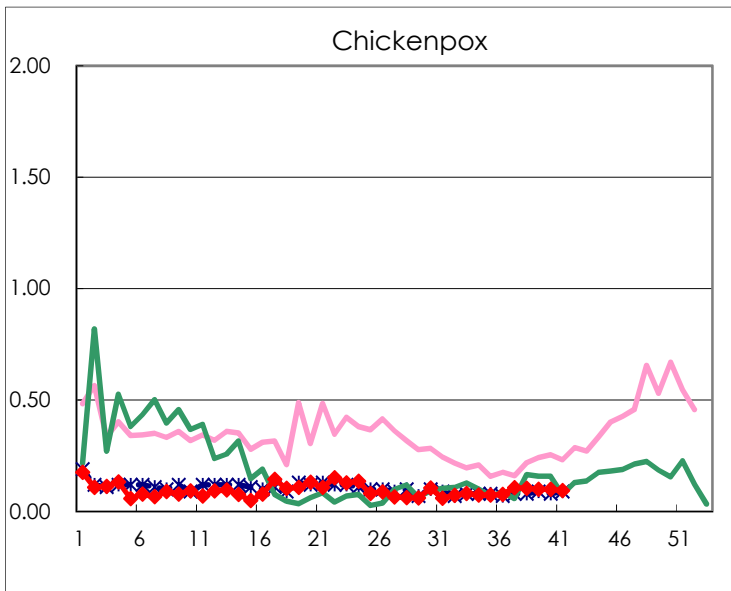
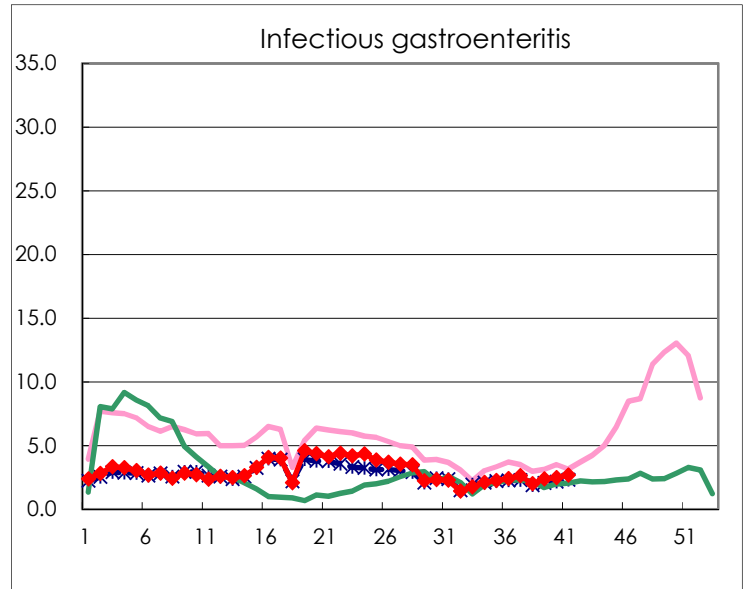
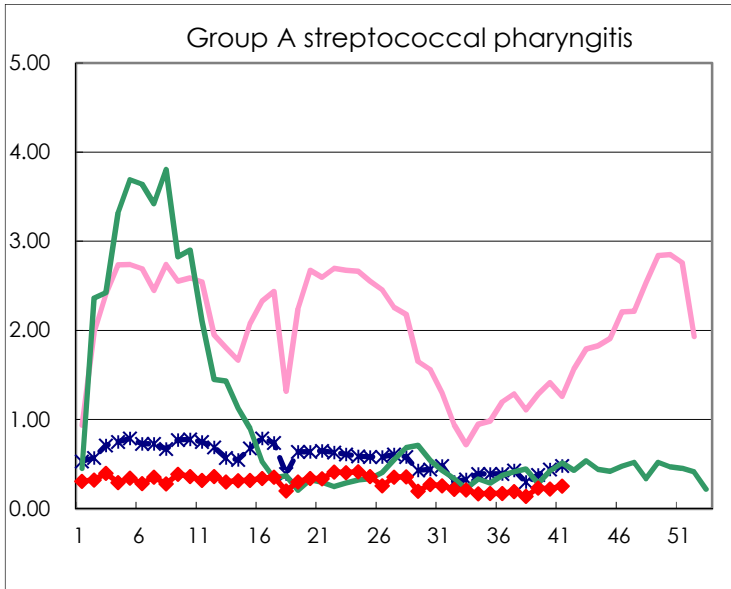
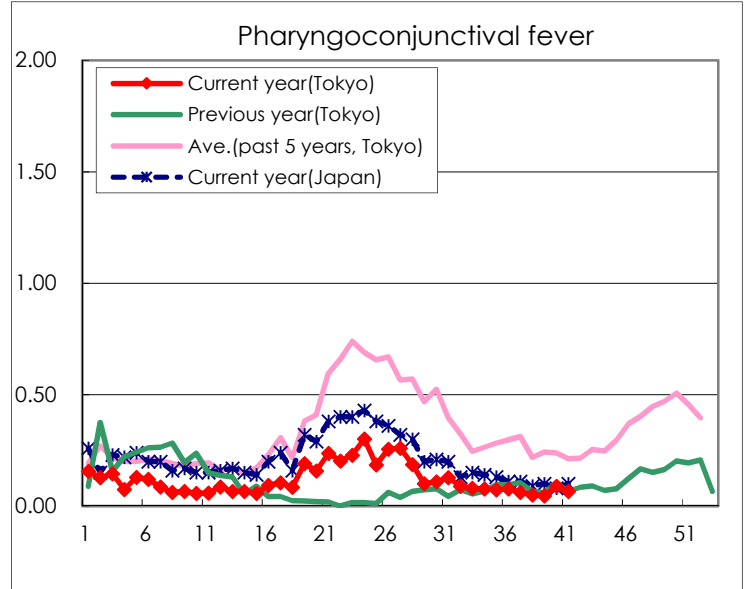
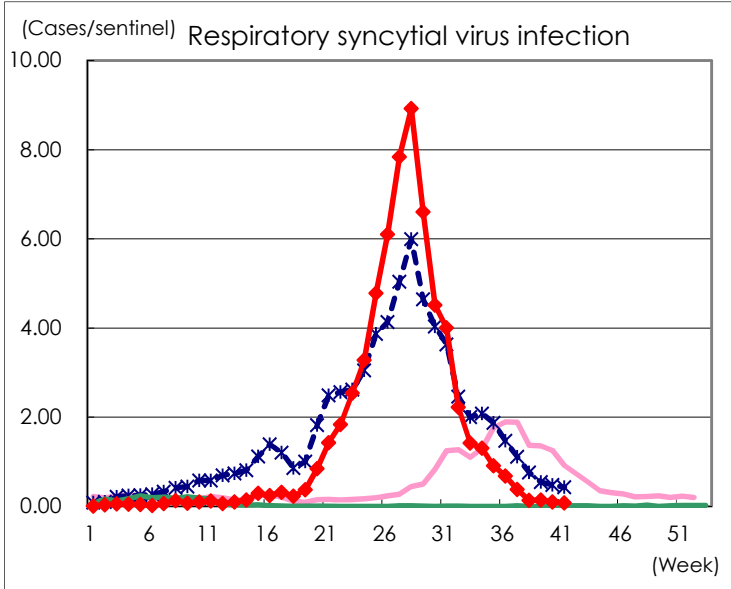
Category	Diseases	Tokyo					Japan	
		38th	39th	40th	41st	Cum 2021	41st	Cum 2021
V	Amebiasis	1	1	2	4	79	7	421
	Viral hepatitis(excluding hepatitis A and E)	1	3			40	2	155
	CRE infection	5	5	4	8	157	39	1,541
	Acute Flaccid Paralysis (excluding Acute poliomyelitis)					2	1	16
	Acute encephalitis(excluding JE and WNE)		1	1		18	3	266
	Cryptosporidiosis							5
	Creutzfeldt-Jakob disease					10		138
	Severe invasive streptococcal infections(TSLS)		6	1	1	58	12	487
	Acquired immunodeficiency syndrome (AIDS)	10	6	11	7	293	8	810
	Giardiasis					8		29
	Invasive <i>Haemophilus influenzae</i> disease					17	3	152
	Invasive meningococcal disease							2
	Invasive pneumococcal disease	2	2	3		107	7	1,039
	Varicella (limited to hospitalized case)					23	4	215
	Congenital rubella syndrome							1
	Syphilis	30	51	49	50	1,848	109	5,816
	Disseminated cryptococcosis	1	2		1	13	2	113
	Tetanus					2		75
	Vancomycin-resistant <i>S. aureus</i> infection							
	Vancomycin-resistant <i>Enterococcus</i> infection			1		9	2	97
	Pertussis		2	2	1	44	21	495
Rubella		1			2		10	
Measles							4	
MDRA infection					1		3	

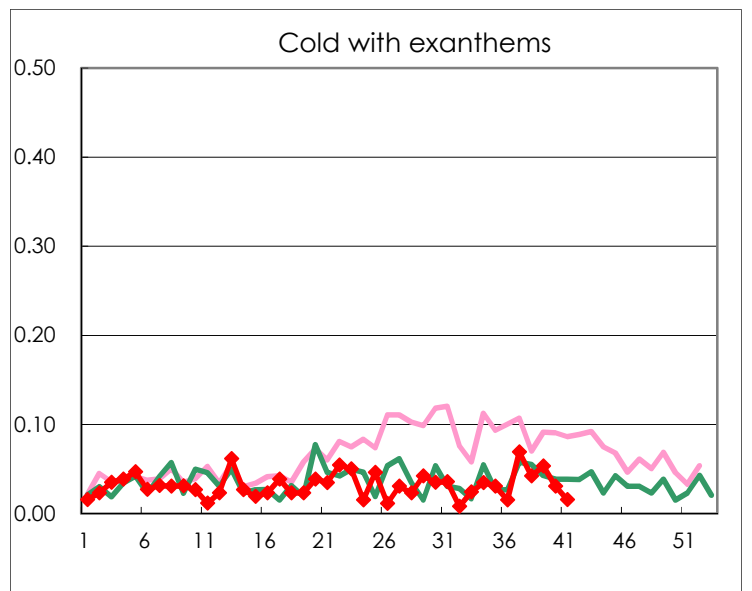
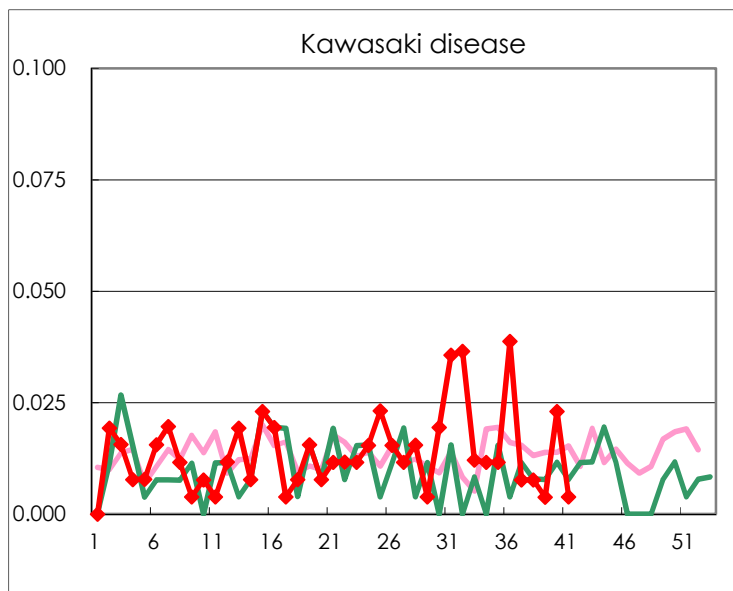
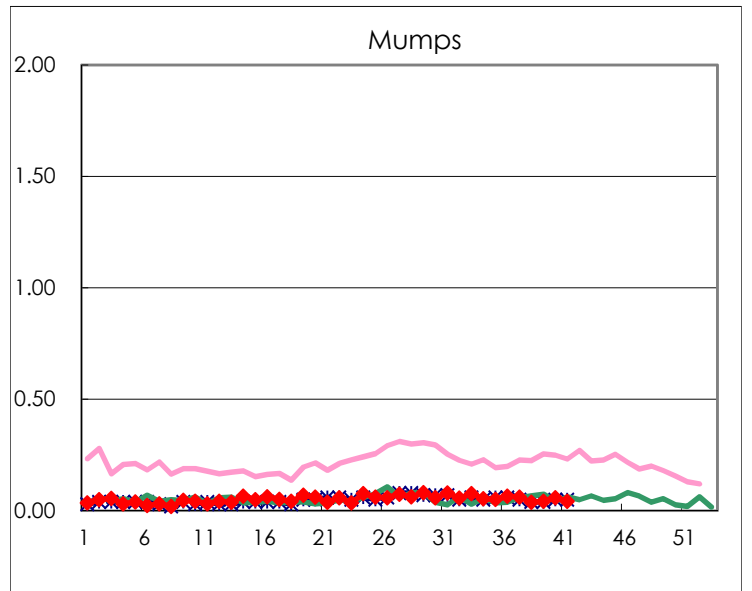
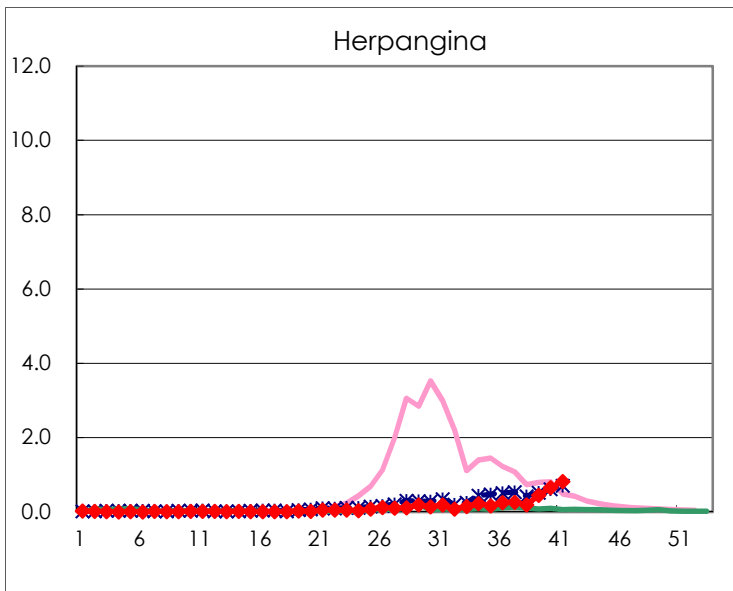
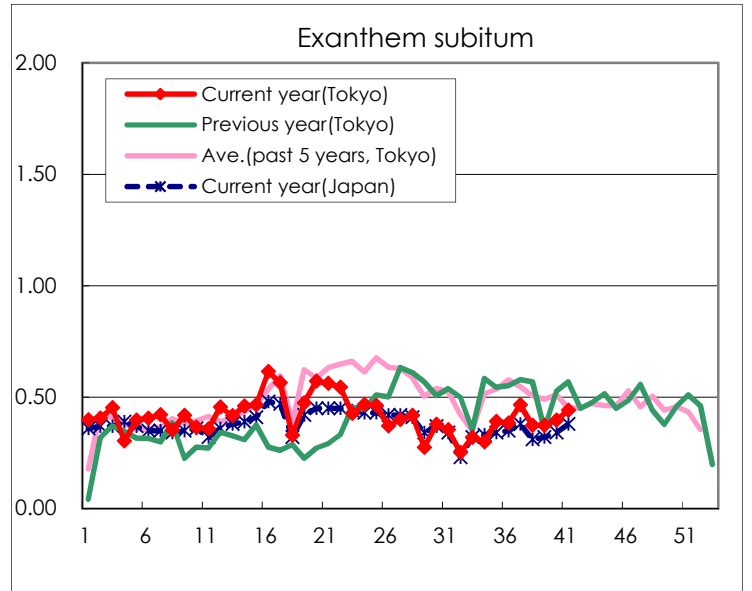
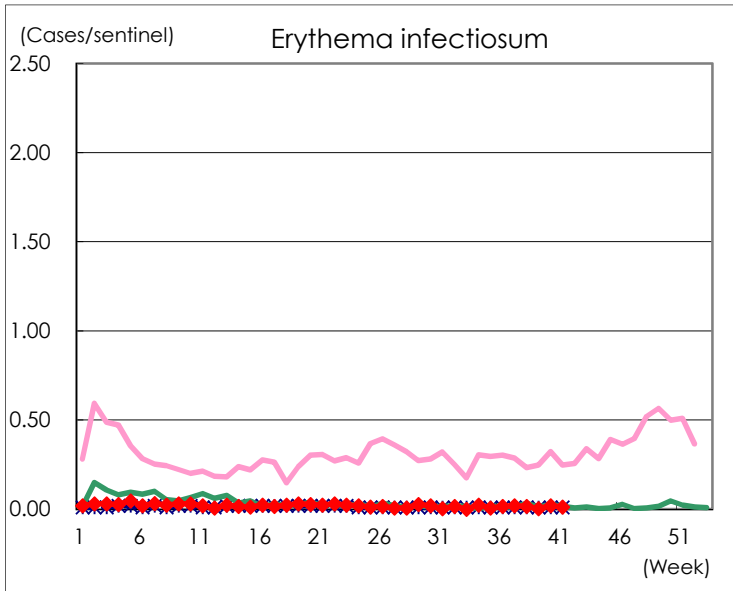
Number of patients with the diseases to be reported
by the designated clinics and hospitals

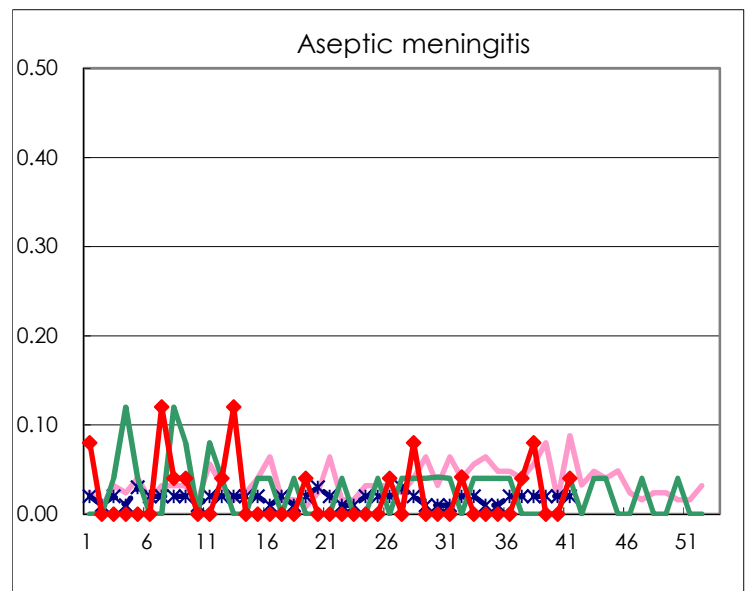
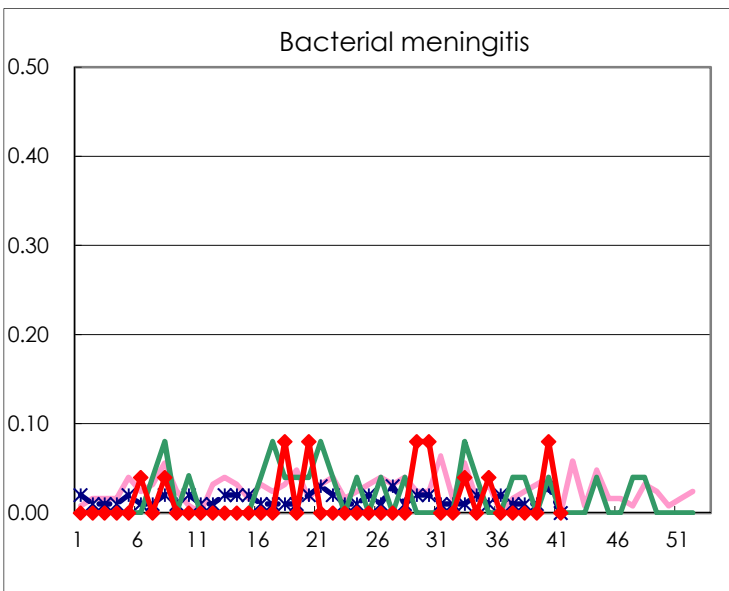
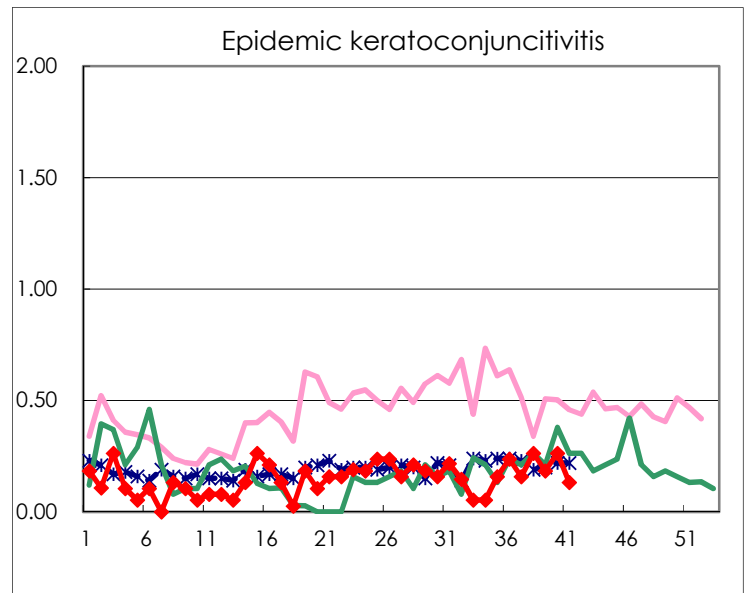
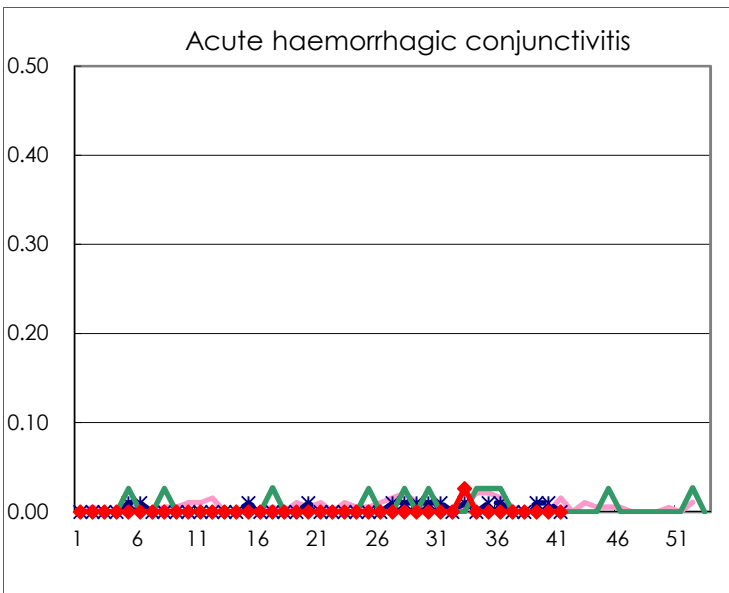
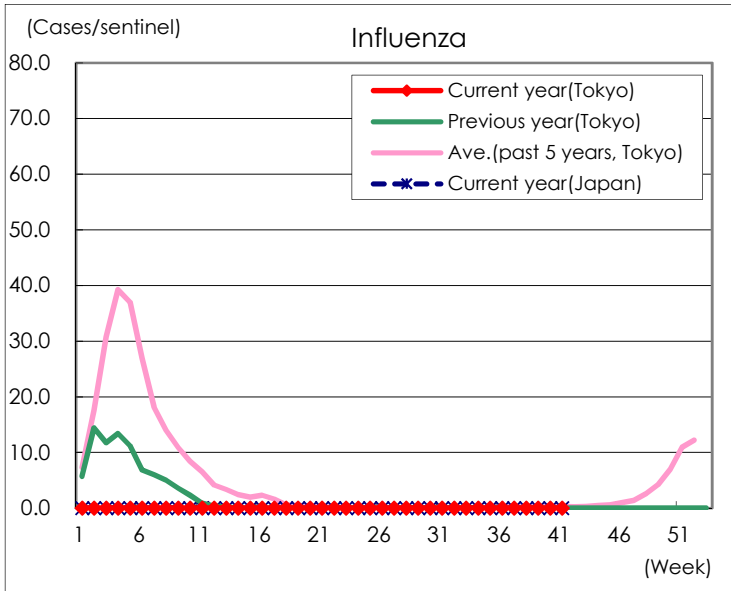
Diseases	Tokyo				
	38th	39th	40th	41st	/sentinel
Respiratory syncytial virus infection	35	37	26	20	0.08
Pharyngoconjunctival fever	13	12	23	17	0.07
Group A streptococcal pharyngitis	36	61	58	65	0.25
Infectious gastroenteritis	517	623	645	687	2.68
Chickenpox	27	26	26	24	0.09
Hand, foot, and mouth disease	47	50	62	95	0.37
Erythema infectiosum	4	1	5	3	0.01
Exanthem subitum	97	98	103	113	0.44
Herpangina	49	117	170	209	0.82
Mumps	10	11	15	11	0.04
Kawasaki disease	2	1	6	1	0.00
Cold with exanthems	11	14	8	4	0.02
Influenza	1			1	0.00
Acute hemorrhagic conjunctivitis					
Epidemic keratoconjunctivitis	10	7	10	5	0.13
Bacterial meningitis			2		
Aseptic meningitis	2			1	0.04
Mycoplasma pneumonia		1			
Chlamydial pneumonia (excluding psittacosis)			1		
Infectious gastroenteritis (only by Rotavirus)					
Influenza-Associated Hospitalizations					

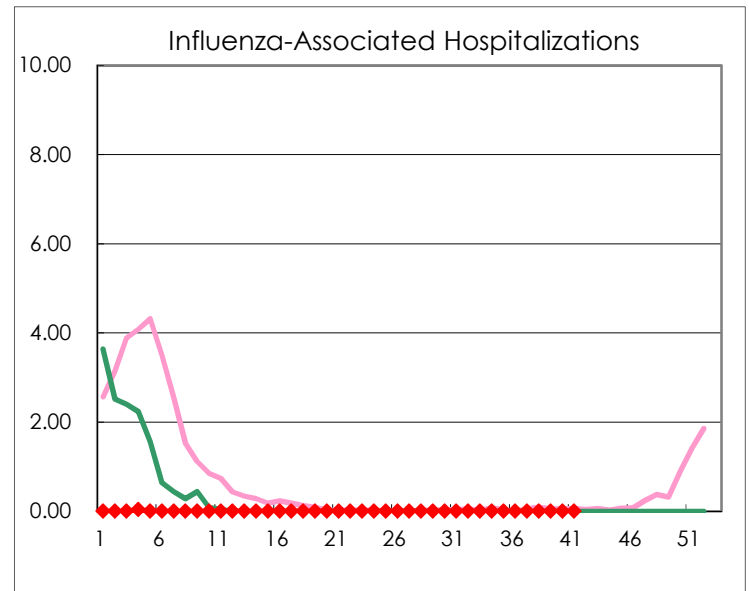
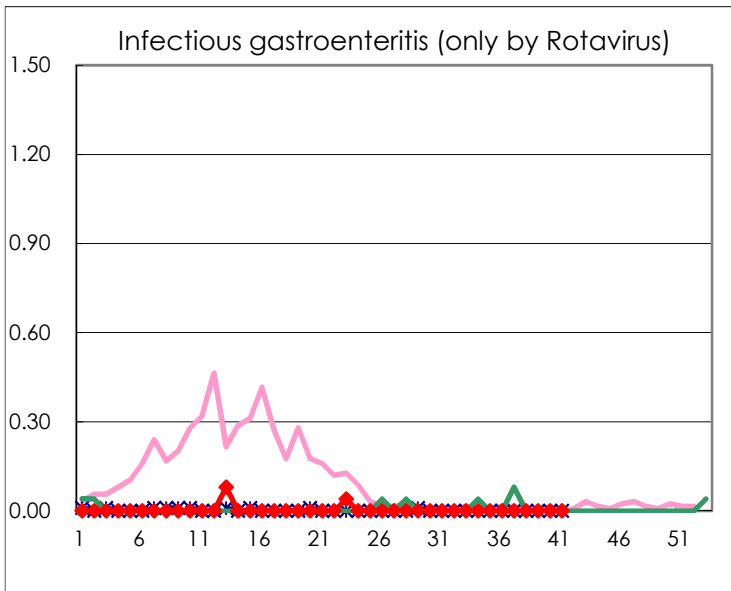
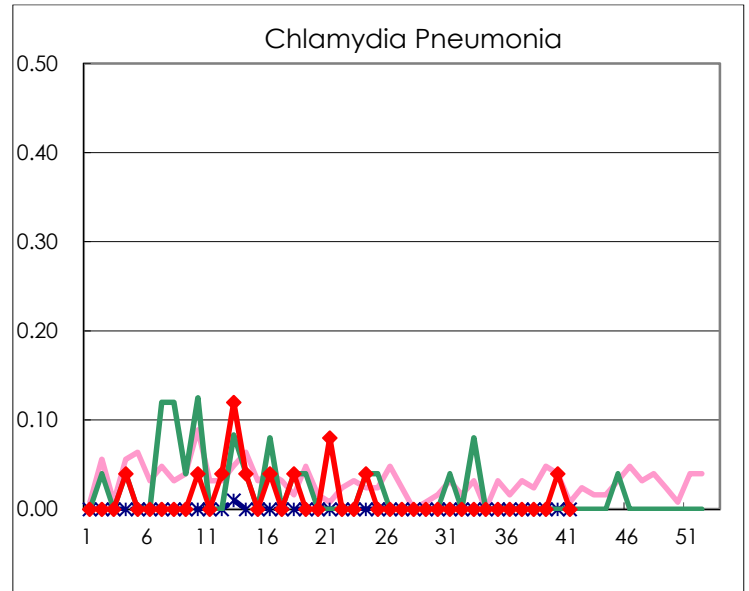
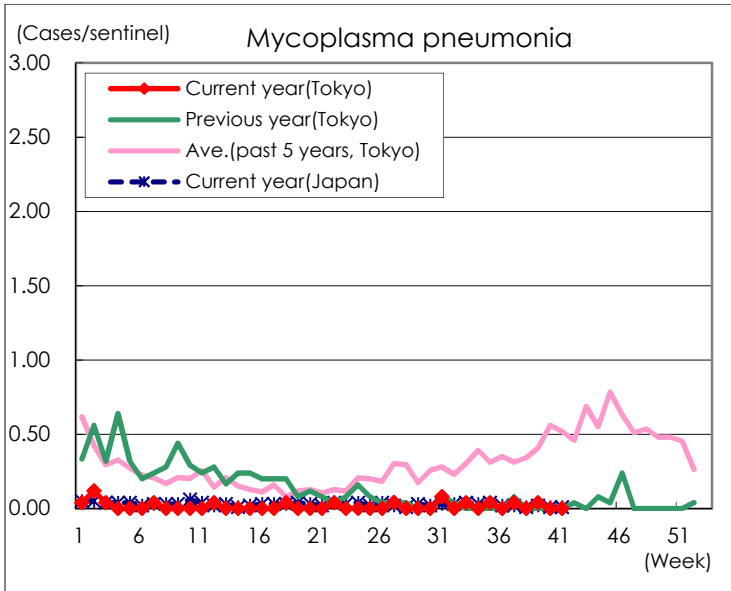
(Blank means 0.)

Disease Trend Graph (weekly reported cases per sentinel in comparison)









Number of sentinel facilities for weekly reporting		
Types of sentinels	Number of sentinels	Sentinels having reported
Pediatric	264	256
Influenza	419	408
Ophthalmic	39	38
Specially-designated	25	25