

# 11 November 2021 / Number 44

## ( 11/1 ~ 11/7 )

### Surveillance System in Tokyo, Japan

The infectious diseases which all physicians must report  
All physicians must report to health centers the incidence of the diseases which are shown at page one. Health centers electronically report the individual cases to Tokyo Metropolitan Infectious Disease Surveillance Center.

The infectious diseases required to be reported by the sentinels  
The numbers of patients who visit the sentinel clinics or hospitals during a week are reported to health centers in Tokyo. And they electronically report the numbers to Tokyo Metropolitan Infectious Disease Surveillance Center. We have about 500 sentinel clinics and hospitals in Tokyo.

Tokyo Metropolitan Institute of Public Health

TEL:81-3-3363-3213 FAX:81-3-5332-7365

e-mail:[www@tokyo-eiken.go.jp](mailto:www@tokyo-eiken.go.jp)

URL:[idsc.tokyo-eiken.go.jp/](http://idsc.tokyo-eiken.go.jp/)

---

Number of patients with the diseases which all physicians must report

Category	Diseases	Tokyo					Japan	
		41st	42nd	43rd	44th	Cum 2021	44th	Cum 2021
I	Ebola hemorrhagic fever							
	Crimean-Congo hemorrhagic fever							
	Smallpox							
	South American hemorrhagic fever							
	Plague							
	Marburg disease							
	Lassa fever							
II	Acute poliomyelitis							
	Tuberculosis	47	39	50	35	1,878	218	13,249
	Diphtheria							
	Severe Acute Respiratory Syndrome(SARS)							
	Middle East Respiratory Syndrome (MERS)							
	Avian influenza H5N1							
	Avian influenza H7N9							
III	Cholera							
	Shigellosis					2		7
	Enterohemorrhagic Escherichia coli infection	6	7	9	2	293	45	2,760
	Typhoid fever						1	2
	Paratyphoid fever							
IV	Hepatitis E		1	2	1	93	4	366
	West Nile fever							
	Hepatitis A		1			12	2	64
	Echinococcosis					1		22
	Yellow fever							
	Psittacosis							8
	Omsk hemorrhagic fever							
	Relapsing fever							7
	Kyasanur forest disease							
	Q fever					1		1
	Rabies							
	Coccidioidomycosis							
	Monkeypox							
	Zika virus infection							
	Severe Fever with Thrombocytopenia Syndrome						1	109
	Hemorrhagic fever with renal syndrome							
	Western equine encephalitis							
	Tick-borne encephalitis							
	Anthrax							
	Chikungunya fever							
	Scrub typhus(Tsutsugamushi disease)					2	13	170
	Dengue fever						1	6
	Eastern equine encephalitis							
	Avian influenza (excluding H5N1 and H7N9)							
	Nipah virus infection							
	Japanese spotted fever					3	9	448
	Japanese encephalitis							3
	Hantavirus pulmonary syndrome							
	Herpes B virus infection							
	Glanders							
	Brucellosis							1
	Venezuelan equine encephalitis							
	Hendra virus infection							
	Epidemic typhus							
Botulism					1		5	
Malaria			1		9	2	23	
Tularemia								
Lyme disease							20	
Lyssavirus infection(excluding rabies)								
Rift valley fever								
Melioidosis								
Legionellosis	8	4	3	4	127	39	1,781	
Leptospirosis			1		3		32	
Rocky mountain spotted fever								

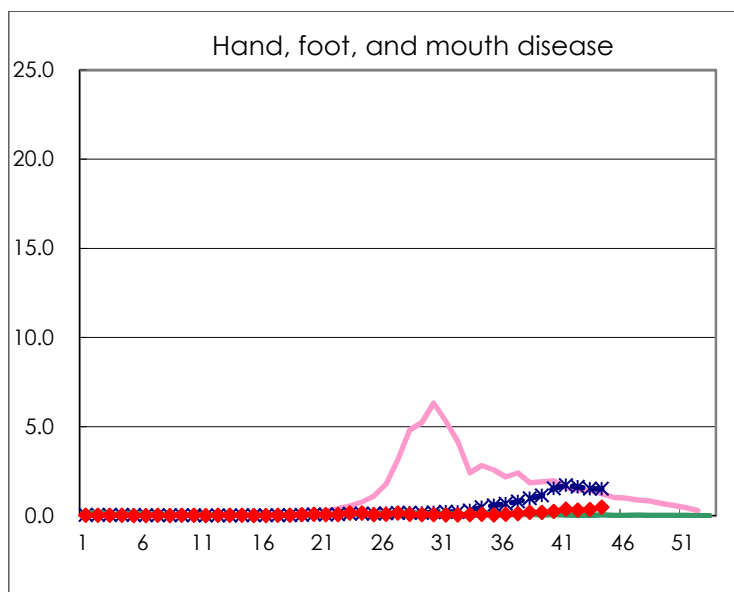
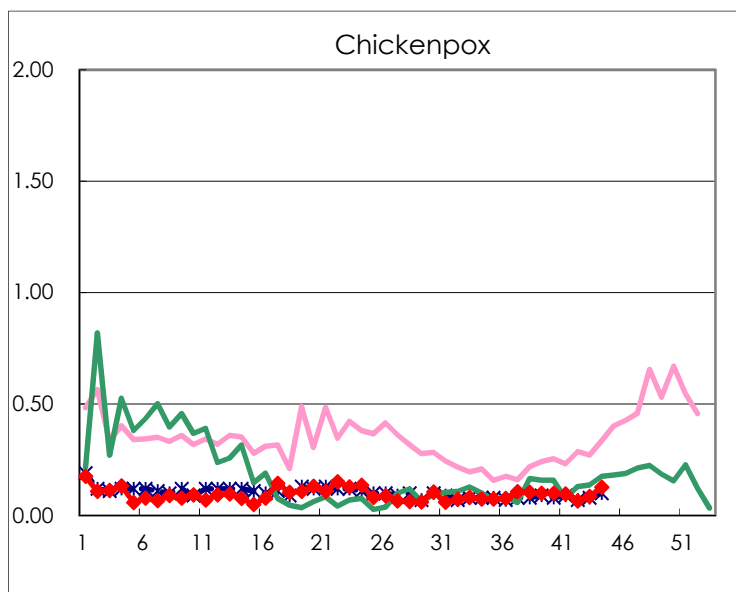
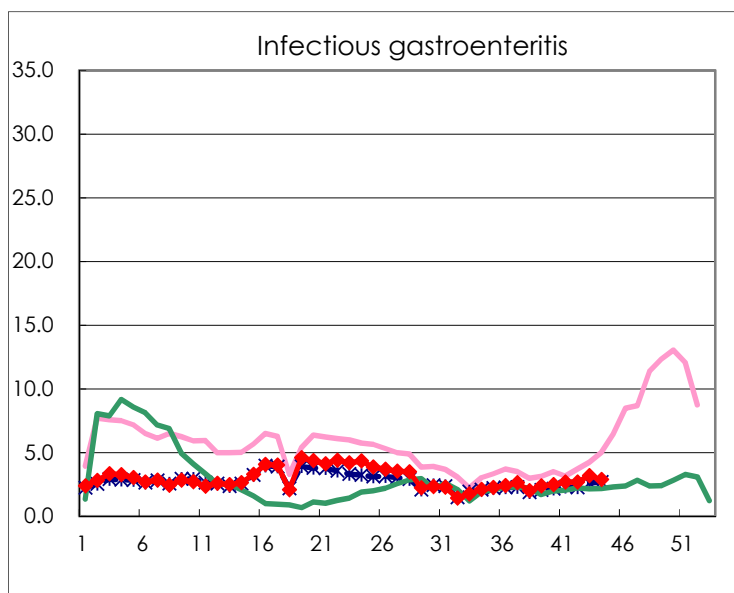
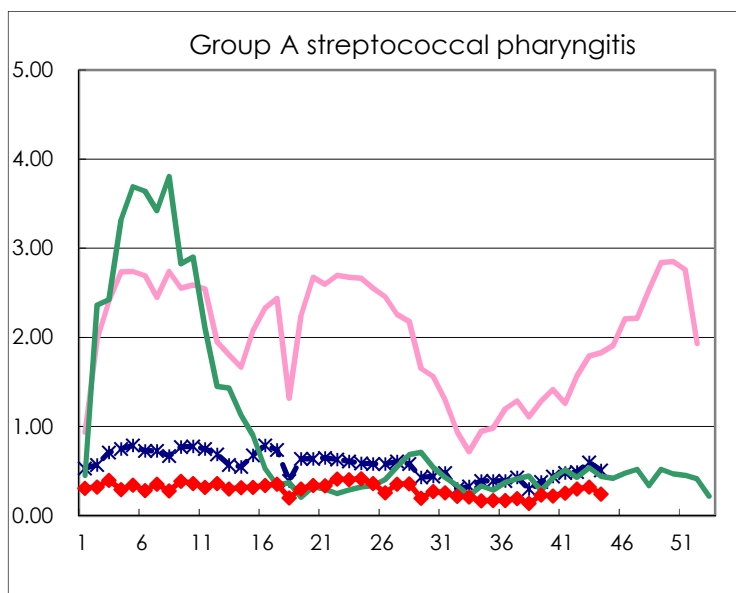
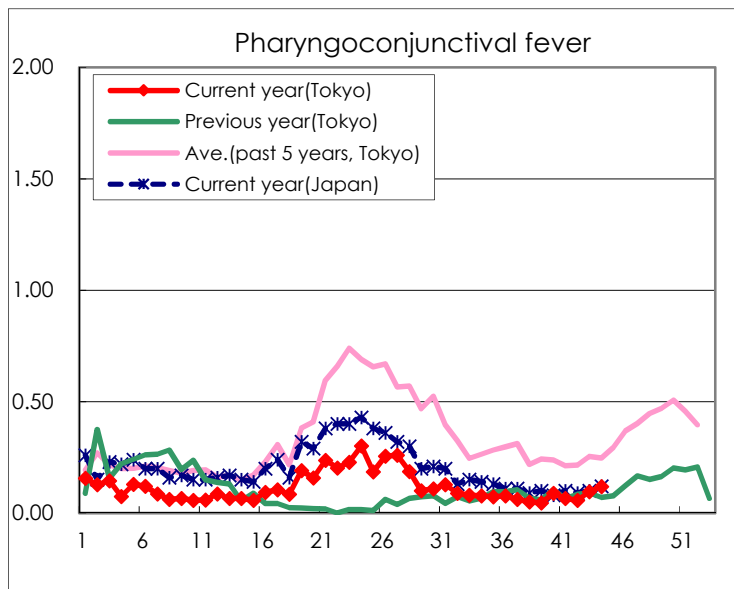
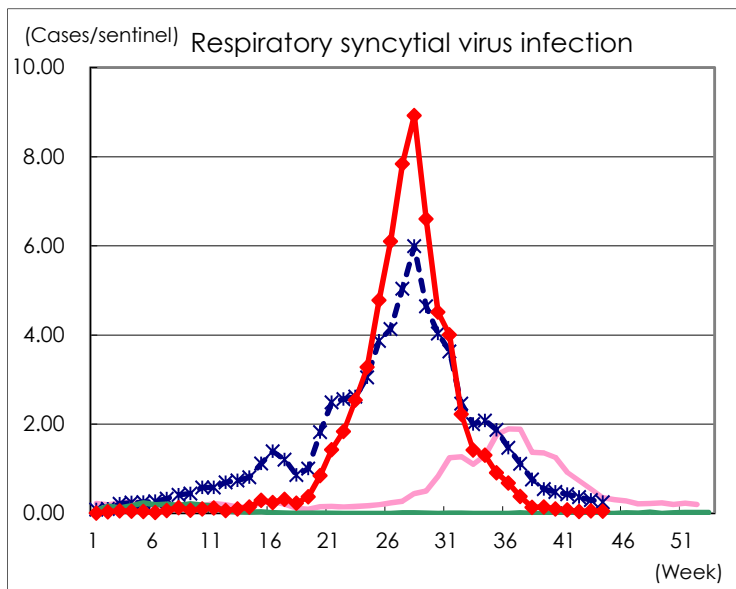
Category	Diseases	Tokyo					Japan	
		41st	42nd	43rd	44th	Cum 2021	44th	Cum 2021
V	Amebiasis	4	2	2		83	4	444
	Viral hepatitis(excluding hepatitis A and E)		1	1	1	43		162
	CRE infection	8	4	2	5	168	38	1,679
	Acute Flaccid Paralysis (excluding Acute poliomyelitis)					2	1	21
	Acute encephalitis(excluding JE and WNE)			1		19	4	283
	Cryptosporidiosis							5
	Creutzfeldt-Jakob disease				1	11	2	154
	Severe invasive streptococcal infections(TSLS)	1	2	1	3	65	5	535
	Acquired immunodeficiency syndrome (AIDS)	7	7	3	9	314	14	871
	Giardiasis					8	1	30
	Invasive <i>Haemophilus influenzae</i> disease					17	6	163
	Invasive meningococcal disease							2
	Invasive pneumococcal disease		2		1	110	19	1,122
	Varicella (limited to hospitalized case)		1	1	1	26	5	236
	Congenital rubella syndrome							1
	Syphilis	51	49	61	55	2,014	106	6,398
	Disseminated cryptococcosis	1			1	14	6	128
	Tetanus					2	2	84
	Vancomycin-resistant <i>S. aureus</i> infection							
	Vancomycin-resistant <i>Enterococcus</i> infection	1				11	1	106
	Pertussis	1	1	2	1	48	19	532
Rubella					2		10	
Measles							4	
MDRA infection					1		4	

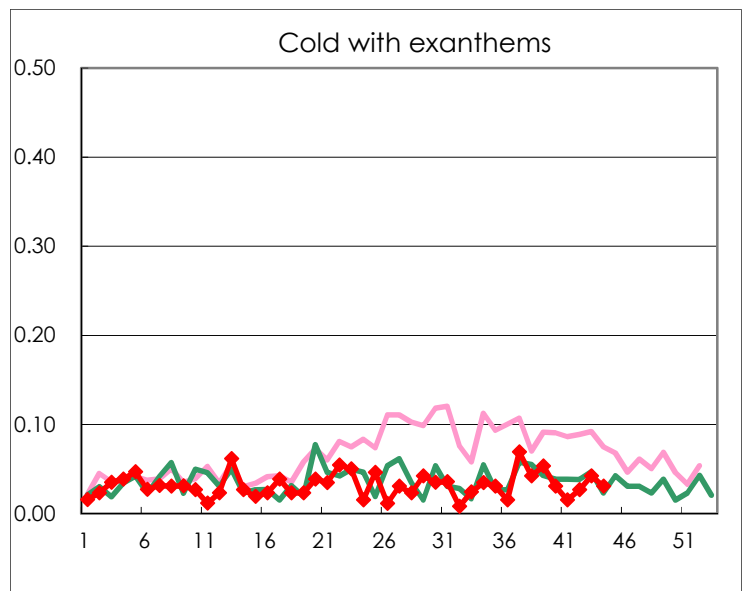
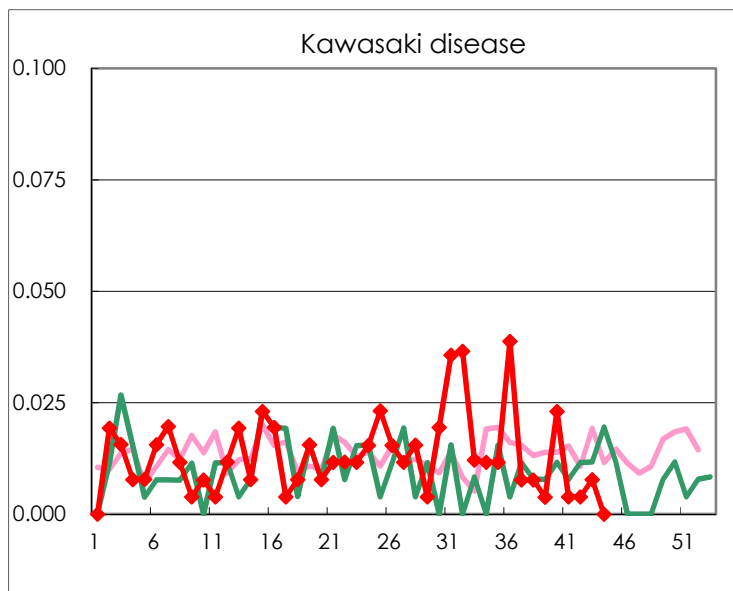
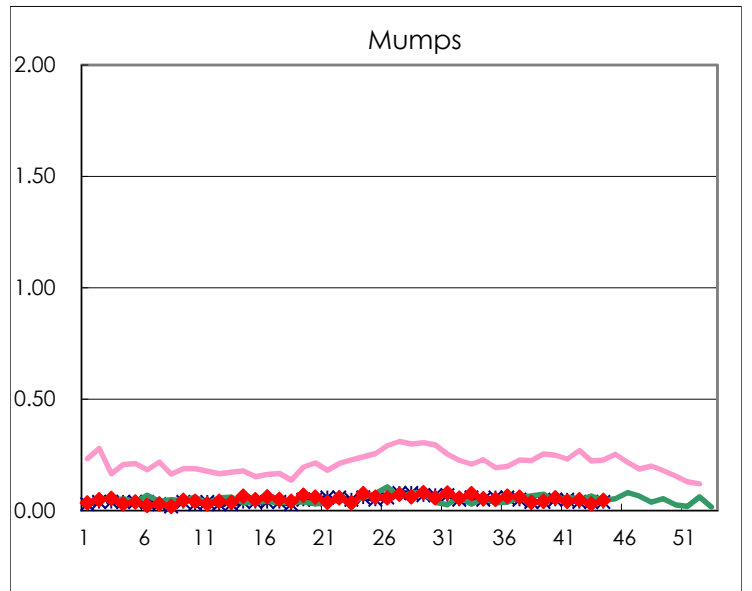
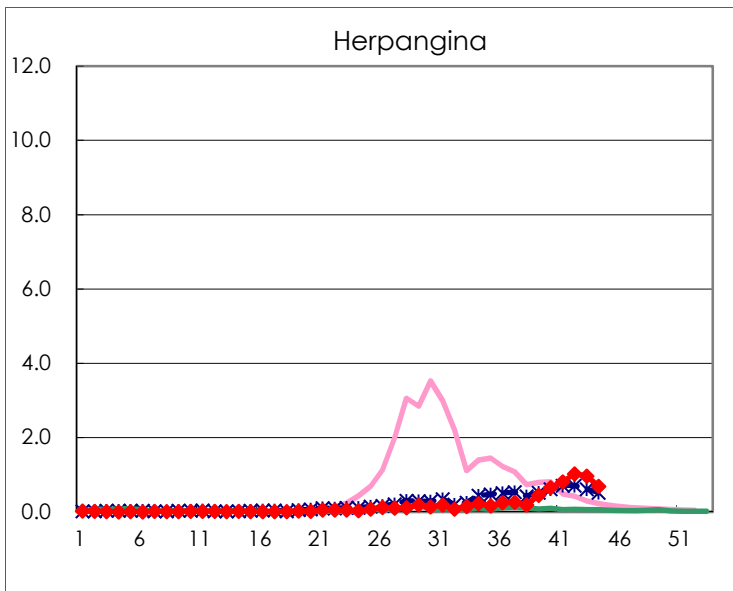
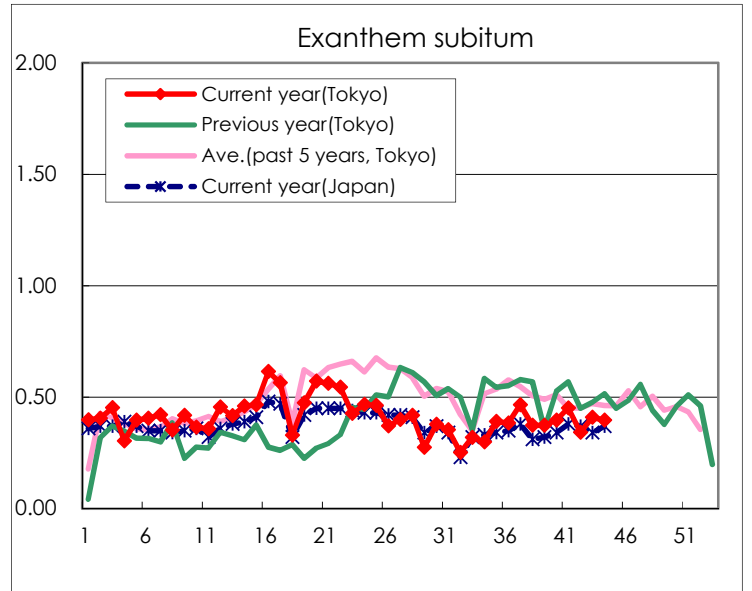
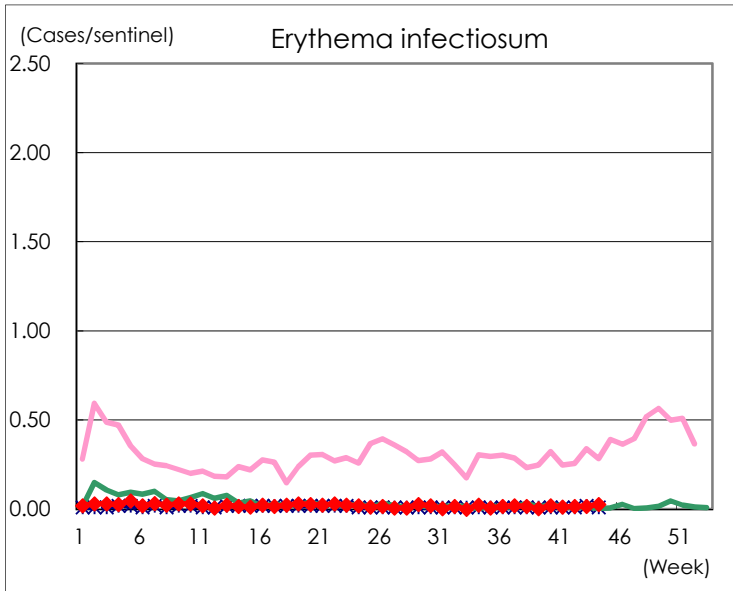
Number of patients with the diseases to be reported  
by the designated clinics and hospitals

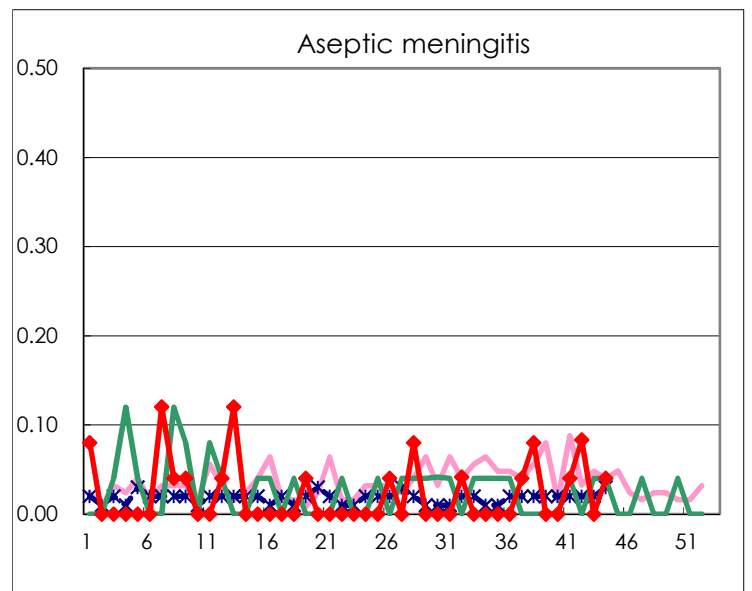
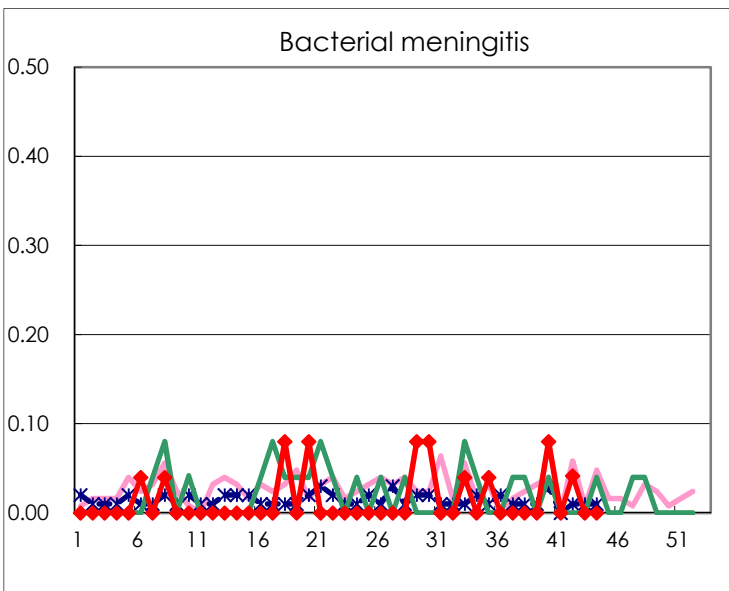
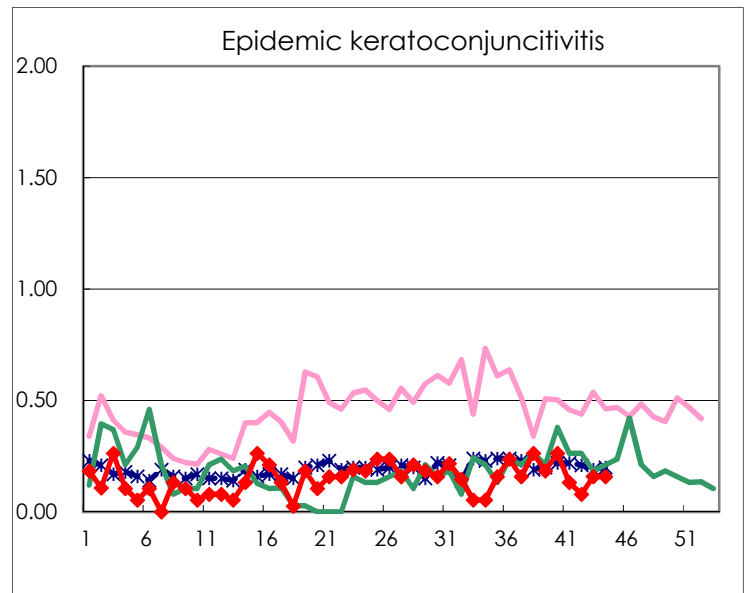
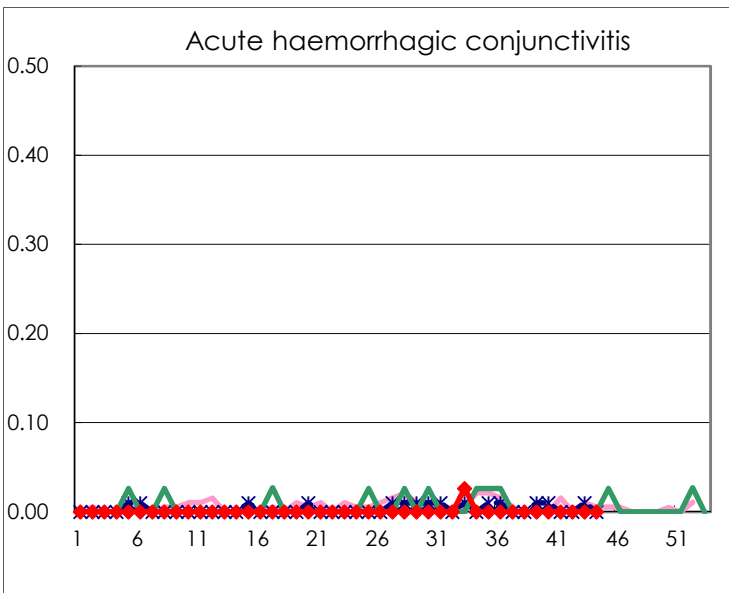
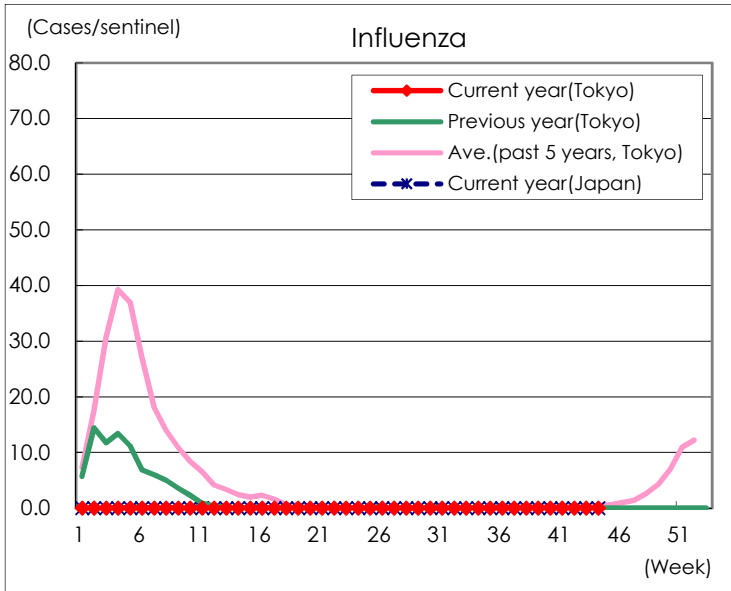
Diseases	Tokyo				
	41st	42nd	43rd	44th	/sentinel
Respiratory syncytial virus infection	20	10	14	13	0.05
Pharyngoconjunctival fever	17	15	25	31	0.12
Group A streptococcal pharyngitis	65	78	84	63	0.24
Infectious gastroenteritis	691	696	821	751	2.89
Chickenpox	25	17	22	33	0.13
Hand, foot, and mouth disease	95	81	90	123	0.47
Erythema infectiosum	3	4	4	7	0.03
Exanthem subitum	116	89	106	103	0.40
Herpangina	209	267	250	179	0.69
Mumps	11	13	8	12	0.05
Kawasaki disease	1	1	2		
Cold with exanthems	4	7	11	8	0.03
Influenza	1				
Acute hemorrhagic conjunctivitis					
Epidemic keratoconjunctivitis	5	3	6	6	0.16
Bacterial meningitis		1			
Aseptic meningitis	1	2		1	0.04
<i>Mycoplasma pneumoniae</i>		1		1	0.04
Chlamydial pneumonia (excluding psittacosis)					
Infectious gastroenteritis (only by Rotavirus)					
Influenza-Associated Hospitalizations					

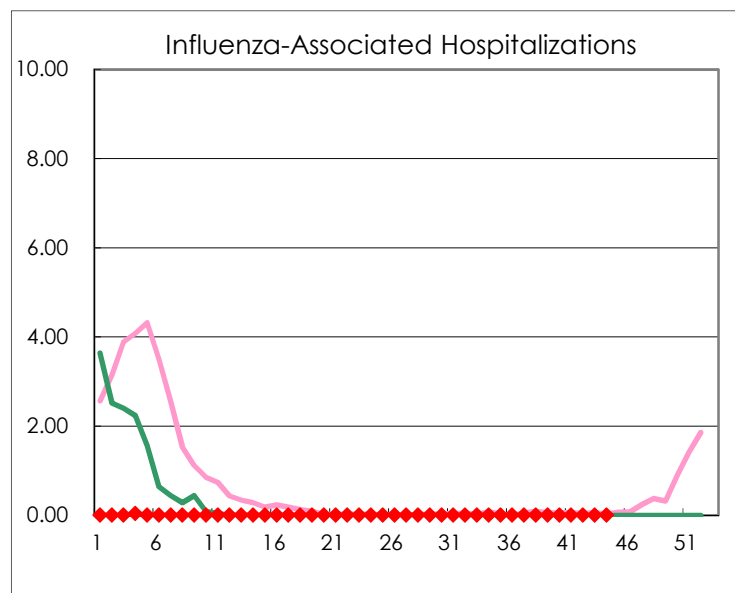
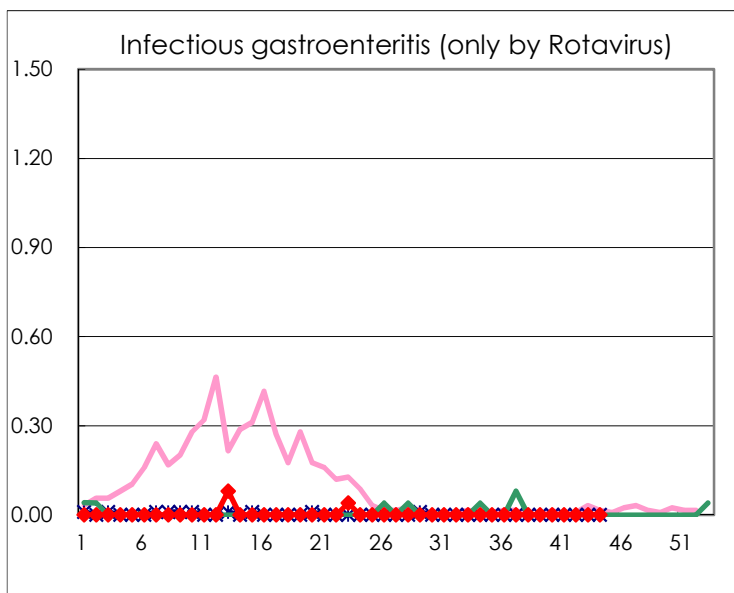
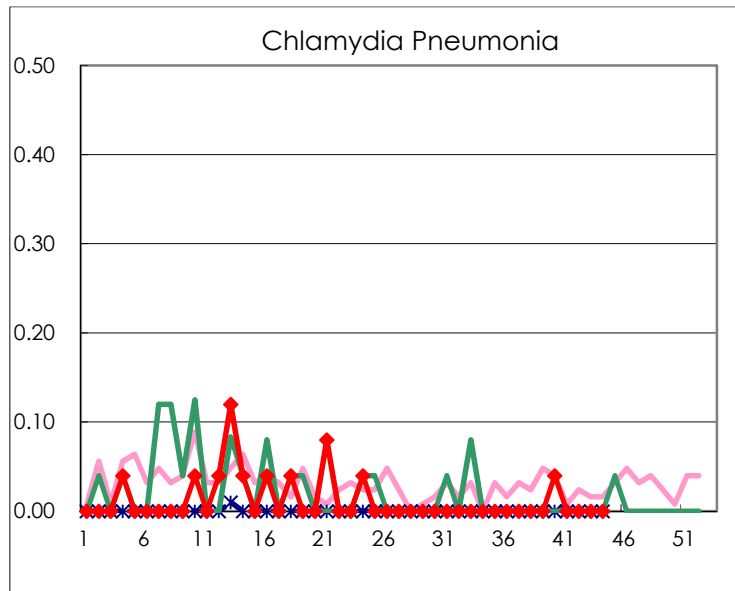
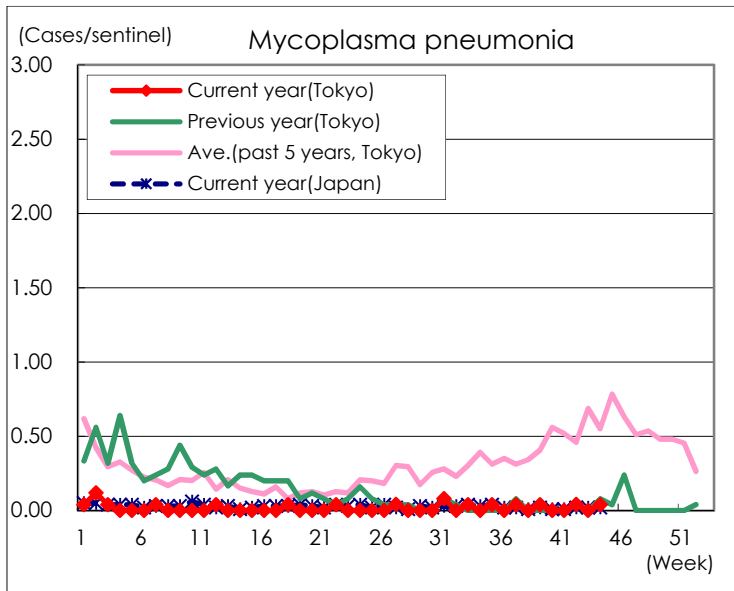
( Blank means 0. )

# Disease Trend Graph (weekly reported cases per sentinel in comparison)









Number of sentinel facilities for weekly reporting		
Types of sentinels	Number of sentinels	Sentinels having reported
Pediatric	264	260
Influenza	419	413
Ophthalmic	39	38
Specially-designated	25	25