
INFECTIOUS DISEASES WEEKLY REPORT

TOKYO iDWR

Tokyo Metropolitan Infectious Disease Surveillance Center

18 November 2021 / Number 45
(11/8 ~ 11/14)

Surveillance System in Tokyo, Japan

The infectious diseases which all physicians must report
All physicians must report to health centers the incidence of the diseases which are shown at page one. Health centers electronically report the individual cases to Tokyo Metropolitan Infectious Disease Surveillance Center.

The infectious diseases required to be reported by the sentinels
The numbers of patients who visit the sentinel clinics or hospitals during a week are reported to health centers in Tokyo. And they electronically report the numbers to Tokyo Metropolitan Infectious Disease Surveillance Center. We have about 500 sentinel clinics and hospitals in Tokyo.

Tokyo Metropolitan Institute of Public Health

TEL:81-3-3363-3213 FAX:81-3-5332-7365

e-mail:www@tokyo-eiken.go.jp

URL:idsc.tokyo-eiken.go.jp/

Number of patients with the diseases which all physicians must report

Category	Diseases	Tokyo					Japan	
		42nd	43rd	44th	45th	Cum 2021	45th	Cum 2021
I	Ebola hemorrhagic fever							
	Crimean-Congo hemorrhagic fever							
	Smallpox							
	South American hemorrhagic fever							
	Plague							
	Marburg disease							
	Lassa fever							
II	Acute poliomyelitis							
	Tuberculosis	40	52	38	44	1,928	258	13,589
	Diphtheria							
	Severe Acute Respiratory Syndrome(SARS)							
	Middle East Respiratory Syndrome (MERS)							
	Avian influenza H5N1							
	Avian influenza H7N9							
III	Cholera							
	Shigellosis					2		7
	Enterohemorrhagic Escherichia coli infection	7	9	2	5	298	56	2,835
	Typhoid fever							2
	Paratyphoid fever							
IV	Hepatitis E	1	2	1		93	7	373
	West Nile fever							
	Hepatitis A	1				12		64
	Echinococcosis					1	1	23
	Yellow fever							
	Psittacosis							8
	Omsk hemorrhagic fever							
	Relapsing fever							8
	Kyasanur forest disease							
	Q fever					1		1
	Rabies							
	Coccidioidomycosis							
	Monkeypox							
	Zika virus infection							
	Severe Fever with Thrombocytopenia Syndrome							109
	Hemorrhagic fever with renal syndrome							
	Western equine encephalitis							
	Tick-borne encephalitis							
	Anthrax							
	Chikungunya fever							
	Scrub typhus(Tsutsugamushi disease)				1	3	24	202
	Dengue fever							6
	Eastern equine encephalitis							
	Avian influenza (excluding H5N1 and H7N9)							
	Nipah virus infection							
	Japanese spotted fever				1	4	4	460
	Japanese encephalitis							3
	Hantavirus pulmonary syndrome							
	Herpes B virus infection							
	Glanders							
	Brucellosis							1
	Venezuelan equine encephalitis							
	Hendra virus infection							
Epidemic typhus								
Botulism					1		5	
Malaria		1			9	1	24	
Tularemia								
Lyme disease							21	
Lyssavirus infection(excluding rabies)								
Rift valley fever								
Melioidosis								
Legionellosis	4	4	4	4	132	45	1,835	
Leptospirosis		1			3		32	
Rocky mountain spotted fever								

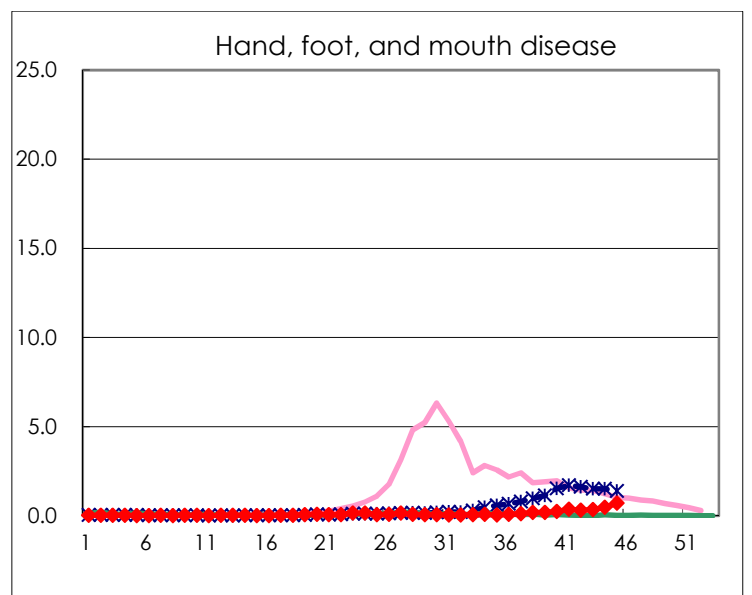
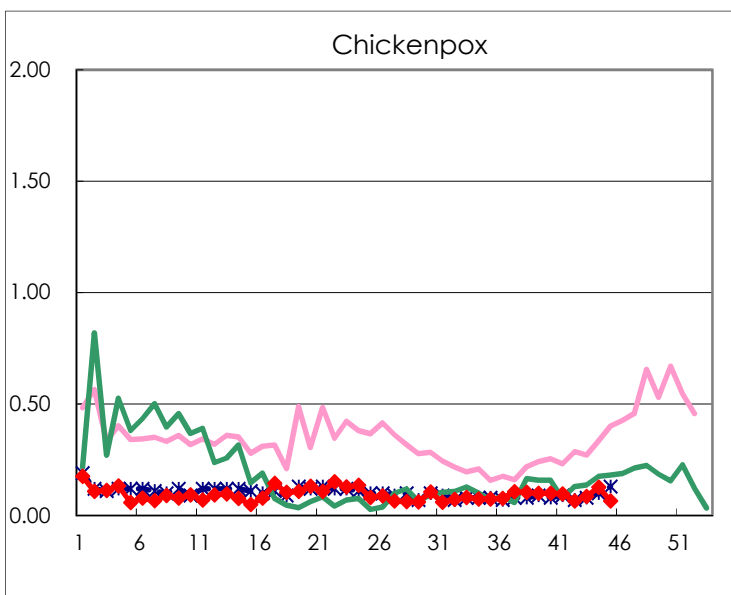
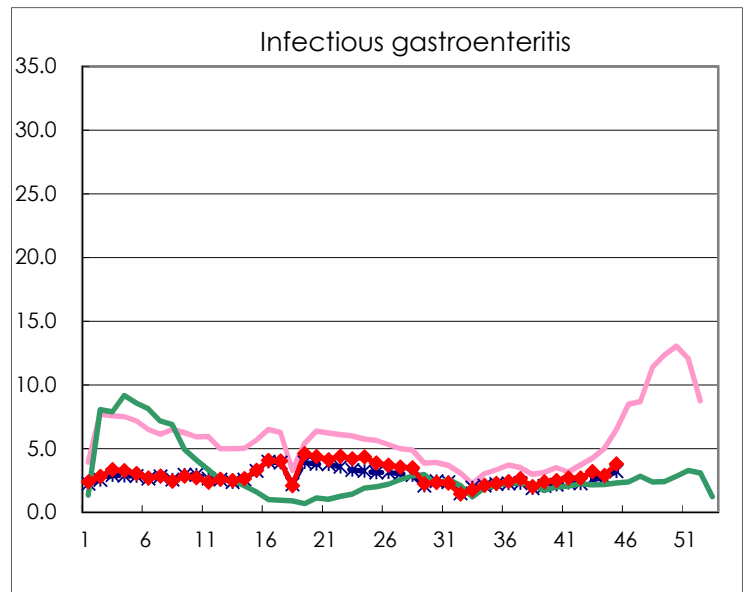
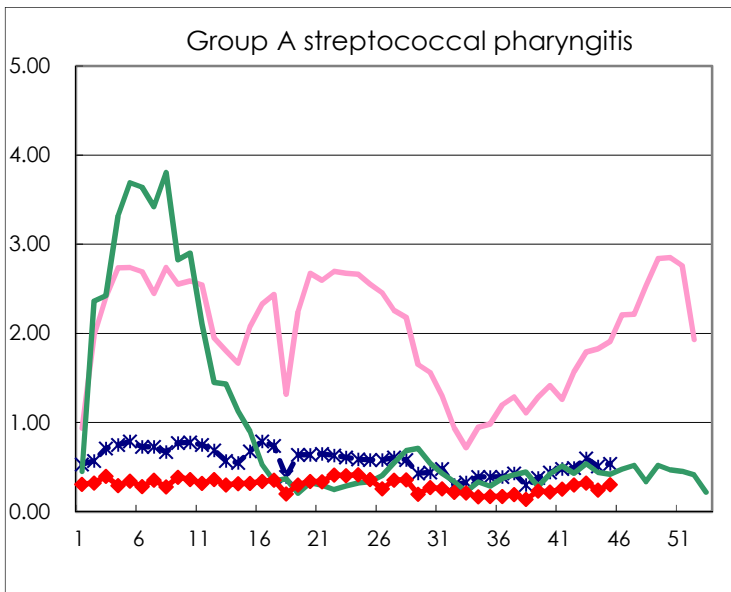
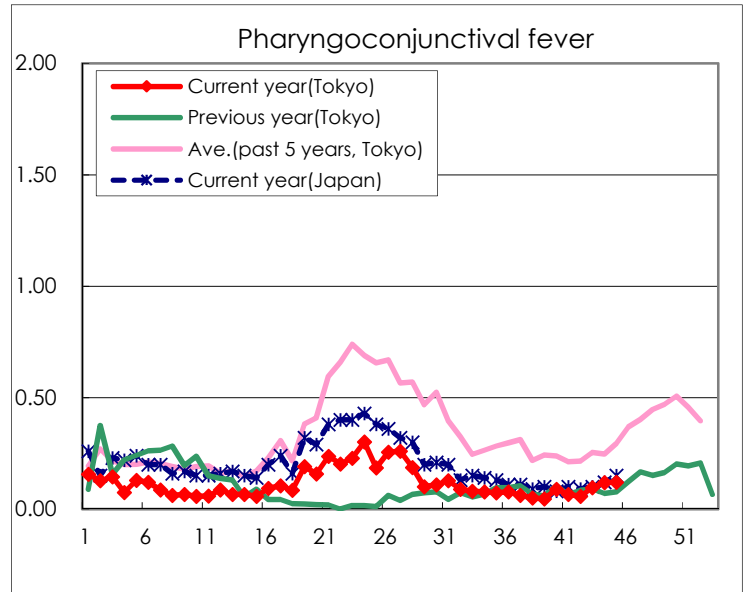
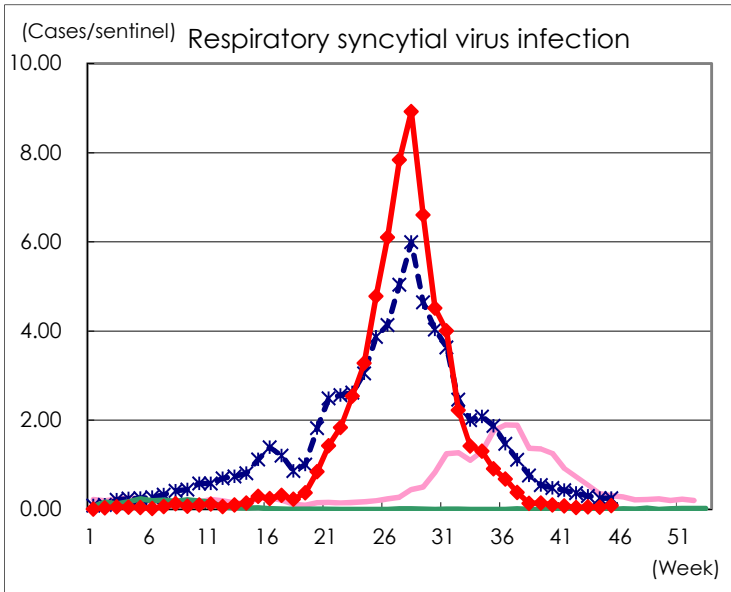
Category	Diseases	Tokyo					Japan	
		42nd	43rd	44th	45th	Cum 2021	45th	Cum 2021
V	Amebiasis	2	2		2	85	5	451
	Viral hepatitis(excluding hepatitis A and E)	1	1	1		43	4	166
	CRE infection	4	2	5	7	175	30	1,730
	Acute Flaccid Paralysis (excluding Acute poliomyelitis)					2		21
	Acute encephalitis(excluding JE and WNE)		1			19	3	288
	Cryptosporidiosis							5
	Creutzfeldt-Jakob disease			1		11		155
	Severe invasive streptococcal infections(TSLS)	2	1	3	3	68	11	548
	Acquired immunodeficiency syndrome (AIDS)	7	3	9	7	321	10	895
	Giardiasis					8	1	32
	Invasive <i>Haemophilus influenzae</i> disease				1	18	1	166
	Invasive meningococcal disease							2
	Invasive pneumococcal disease	2		1		110	23	1,152
	Varicella (limited to hospitalized case)	1	1	1	1	27	7	246
	Congenital rubella syndrome							1
	Syphilis	49	61	57	69	2,085	129	6,595
	Disseminated cryptococcosis			1		14	1	129
	Tetanus					2	1	85
	Vancomycin-resistant <i>S. aureus</i> infection							
	Vancomycin-resistant <i>Enterococcus</i> infection					11	1	108
Pertussis	1	2	1	1	49	13	550	
Rubella					2		11	
Measles							4	
MDRA infection					1		5	

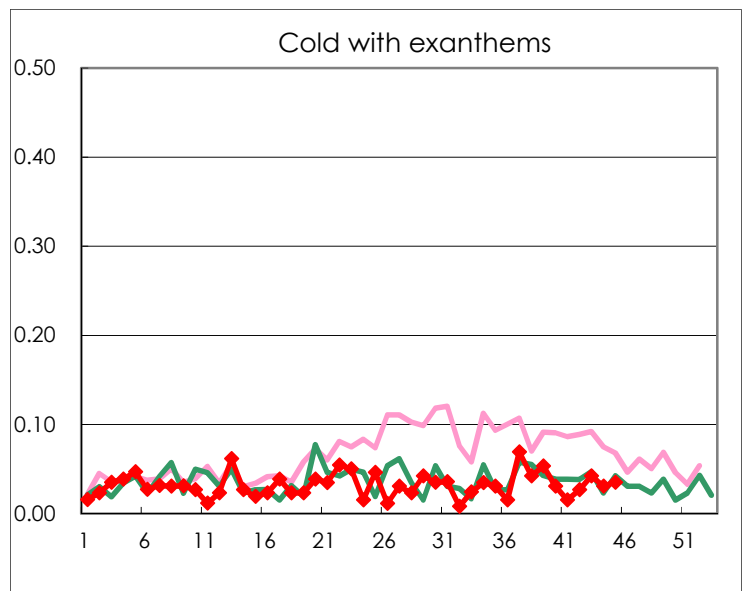
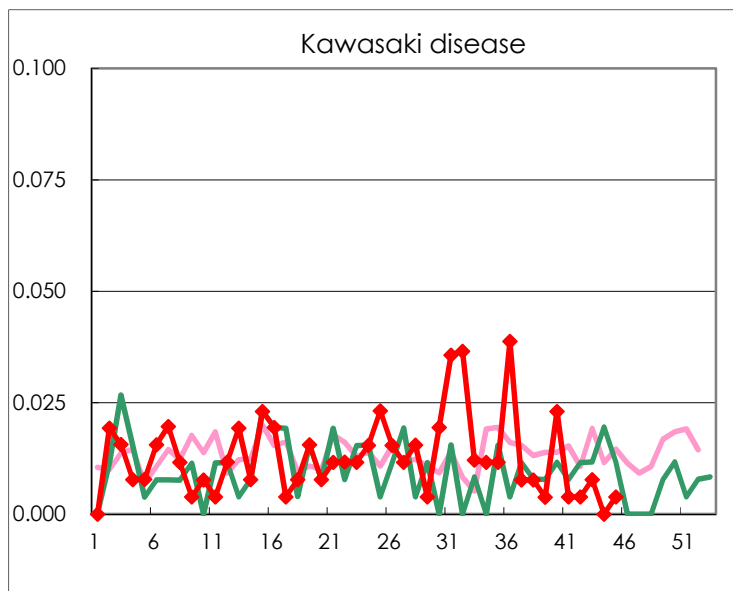
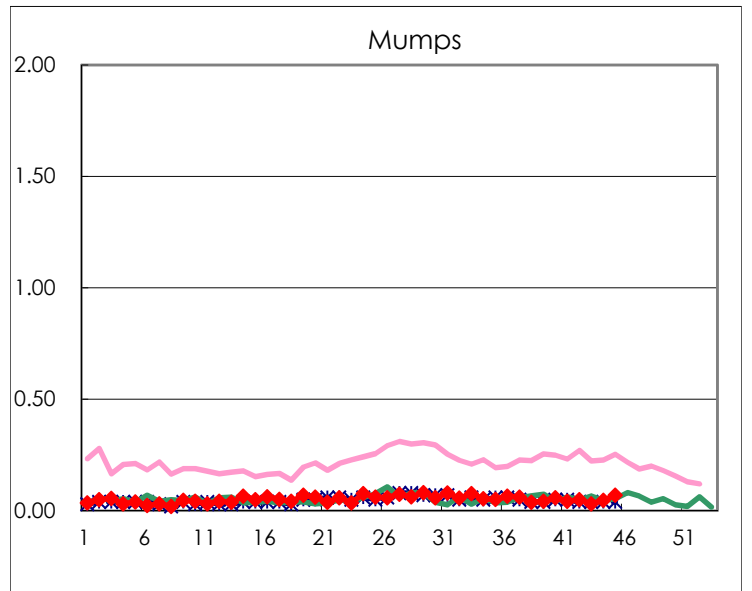
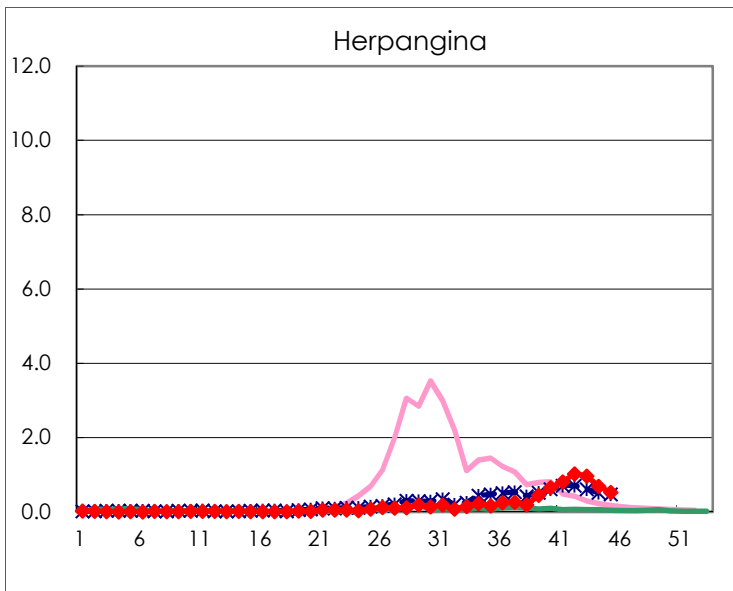
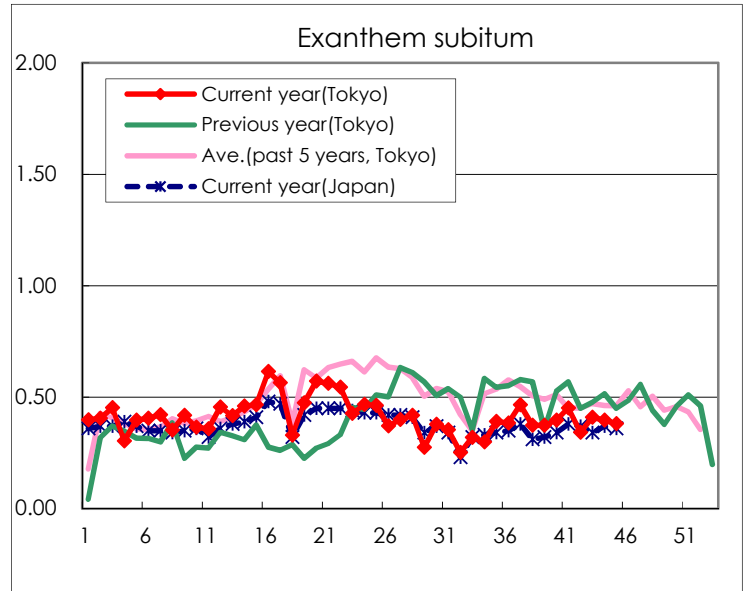
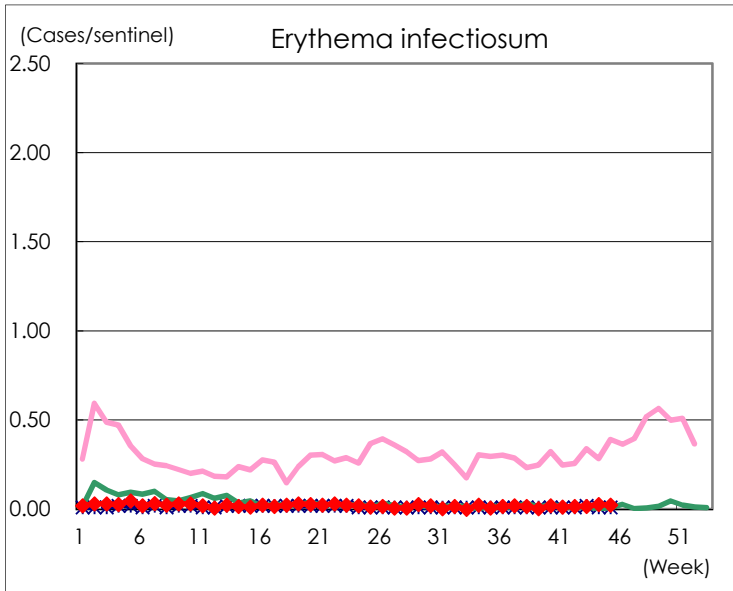
Number of patients with the diseases to be reported
by the designated clinics and hospitals

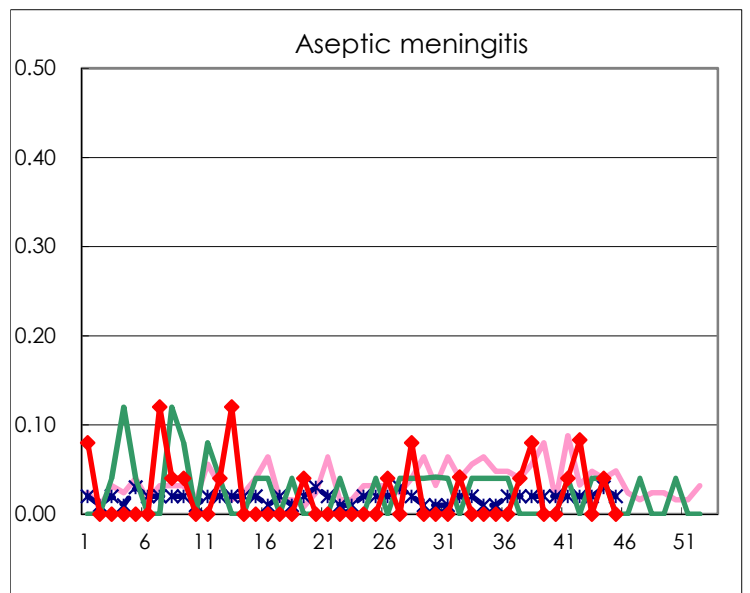
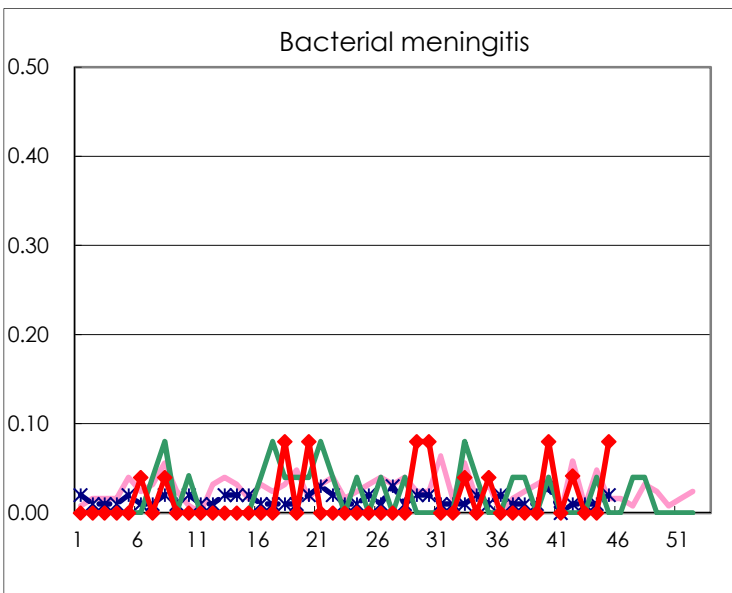
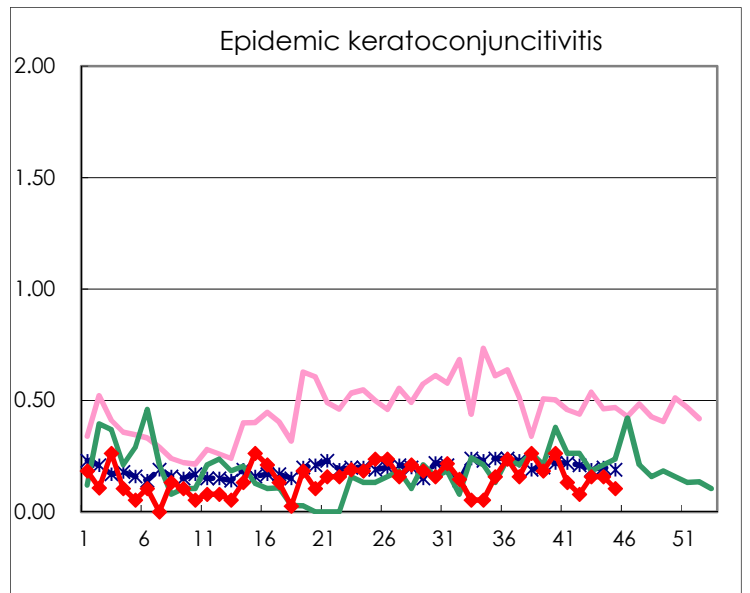
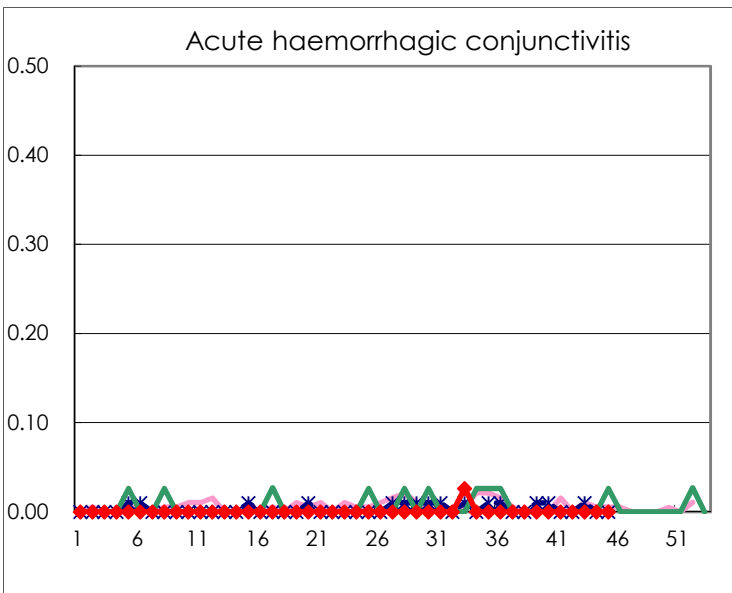
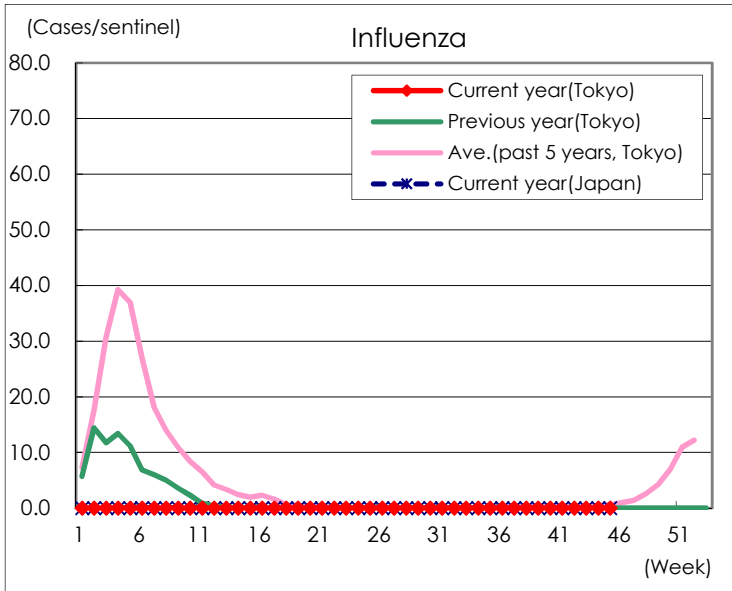
Diseases	Tokyo				
	42nd	43rd	44th	45th	/sentinel
Respiratory syncytial virus infection	10	14	13	21	0.08
Pharyngoconjunctival fever	15	25	31	31	0.12
Group A streptococcal pharyngitis	78	84	63	78	0.30
Infectious gastroenteritis	696	821	751	974	3.79
Chickenpox	17	22	33	17	0.07
Hand, foot, and mouth disease	81	90	123	181	0.70
Erythema infectiosum	4	4	7	6	0.02
Exanthem subitum	89	106	103	98	0.38
Herpangina	267	250	179	136	0.53
Mumps	13	8	12	18	0.07
Kawasaki disease	1	2		1	0.00
Cold with exanthems	7	11	8	9	0.04
Influenza				1	0.00
Acute hemorrhagic conjunctivitis					
Epidemic keratoconjunctivitis	3	6	6	4	0.11
Bacterial meningitis	1			2	0.08
Aseptic meningitis	2		1		
<i>Mycoplasma pneumoniae</i>	1		1		
Chlamydial pneumonia (excluding psittacosis)					
Infectious gastroenteritis (only by Rotavirus)					
Influenza-Associated Hospitalizations					

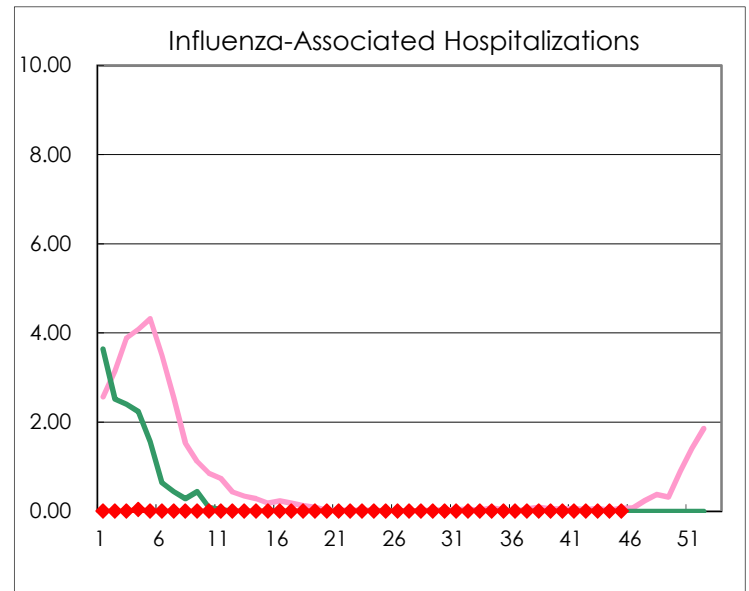
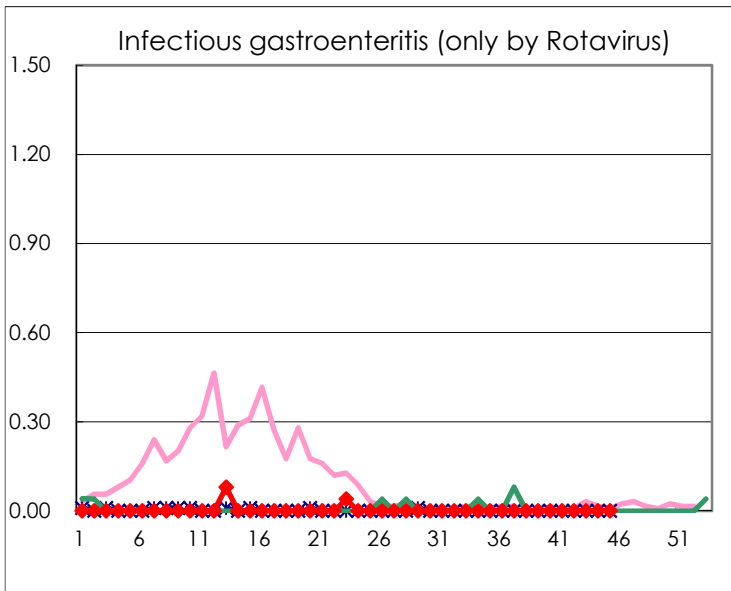
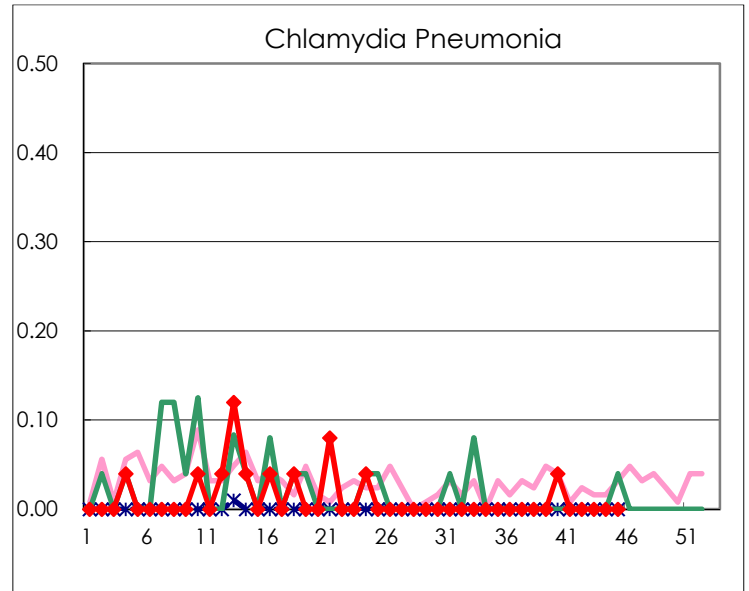
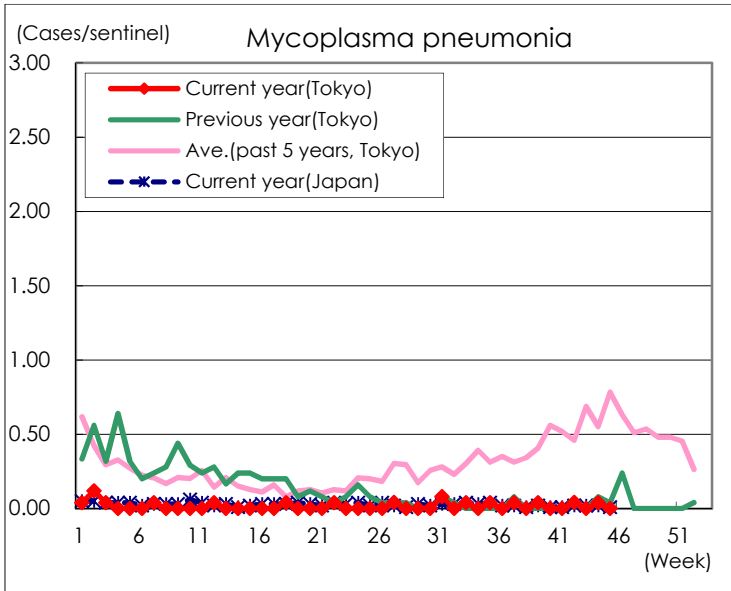
(Blank means 0.)

Disease Trend Graph (weekly reported cases per sentinel in comparison)









Number of sentinel facilities for weekly reporting		
Types of sentinels	Number of sentinels	Sentinels having reported
Pediatric	264	257
Influenza	419	409
Ophthalmic	39	38
Specially-designated	25	25