

# 16 December 2021 / Number 49

## ( 12/6 ~ 12/12 )

### Surveillance System in Tokyo, Japan

The infectious diseases which all physicians must report  
All physicians must report to health centers the incidence of the diseases which are shown at page one. Health centers electronically report the individual cases to Tokyo Metropolitan Infectious Disease Surveillance Center.

The infectious diseases required to be reported by the sentinels  
The numbers of patients who visit the sentinel clinics or hospitals during a week are reported to health centers in Tokyo. And they electronically report the numbers to Tokyo Metropolitan Infectious Disease Surveillance Center. We have about 500 sentinel clinics and hospitals in Tokyo.

Tokyo Metropolitan Institute of Public Health

TEL:81-3-3363-3213 FAX:81-3-5332-7365

e-mail:[www@tokyo-eiken.go.jp](mailto:www@tokyo-eiken.go.jp)

URL:[idsc.tokyo-eiken.go.jp/](http://idsc.tokyo-eiken.go.jp/)

---

Number of patients with the diseases which all physicians must report

Category	Diseases	Tokyo					Japan	
		46th	47th	48th	49th	Cum 2021	49th	Cum 2021
I	Ebola hemorrhagic fever							
	Crimean-Congo hemorrhagic fever							
	Smallpox							
	South American hemorrhagic fever							
	Plague							
	Marburg disease							
	Lassa fever							
II	Acute poliomyelitis							
	Tuberculosis	43	32	43	28	2,080	232	14,867
	Diphtheria							
	Severe Acute Respiratory Syndrome(SARS)							
	Middle East Respiratory Syndrome (MERS)							
	Avian influenza H5N1							
	Avian influenza H7N9							
III	Cholera							
	Shigellosis					2		7
	Enterohemorrhagic Escherichia coli infection	3	4	2	5	312	55	3,038
	Typhoid fever					1		3
	Paratyphoid fever							
IV	Hepatitis E	2	3	2	3	104	7	407
	West Nile fever							
	Hepatitis A			1		13		66
	Echinococcosis					1		23
	Yellow fever							
	Psittacosis							8
	Omsk hemorrhagic fever							
	Relapsing fever							8
	Kyasanur forest disease							
	Q fever					1		1
	Rabies							
	Coccidioidomycosis							
	Monkeypox							
	Zika virus infection							
	Severe Fever with Thrombocytopenia Syndrome							109
	Hemorrhagic fever with renal syndrome							
	Western equine encephalitis							
	Tick-borne encephalitis							
	Anthrax							
	Chikungunya fever							
	Scrub typhus(Tsutsugamushi disease)		2	2	3	10	52	443
	Dengue fever							7
	Eastern equine encephalitis							
	Avian influenza (excluding H5N1 and H7N9)							
	Nipah virus infection							
	Japanese spotted fever					4	1	479
	Japanese encephalitis							3
	Hantavirus pulmonary syndrome							
	Herpes B virus infection							
	Glanders							
	Brucellosis							1
	Venezuelan equine encephalitis							
	Hendra virus infection							
Epidemic typhus								
Botulism					1		5	
Malaria					10		26	
Tularemia								
Lyme disease							21	
Lyssavirus infection(excluding rabies)								
Rift valley fever								
Melioidosis								
Legionellosis	6	1	2	3	149	28	2,026	
Leptospirosis					3		33	
Rocky mountain spotted fever								

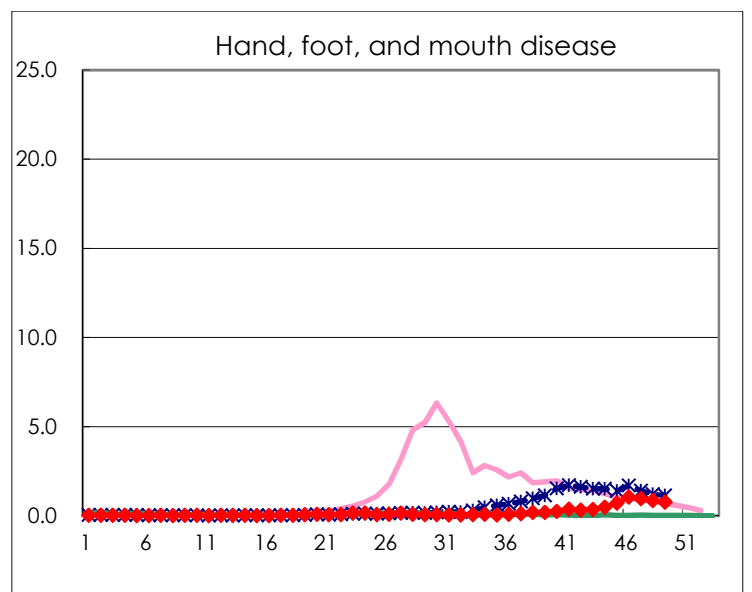
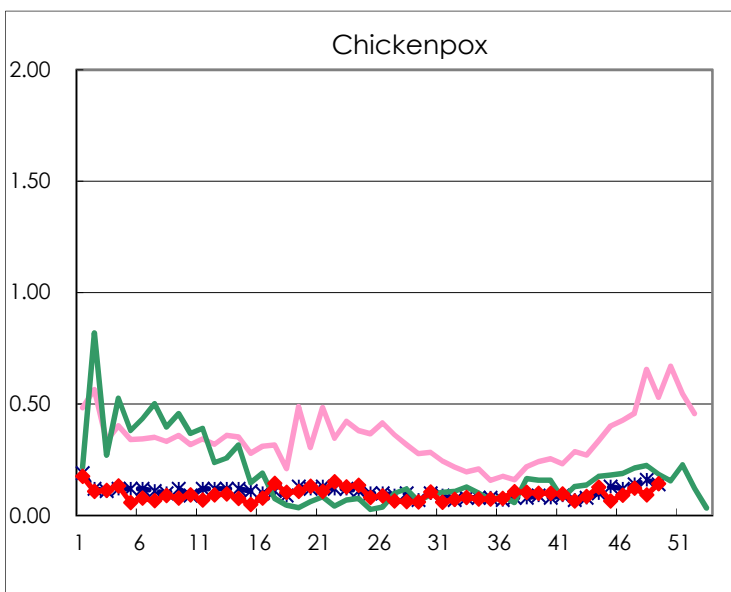
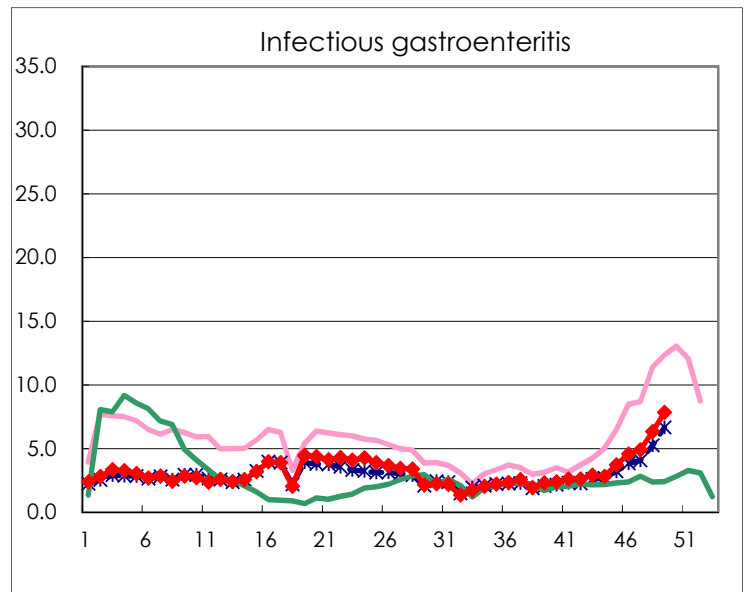
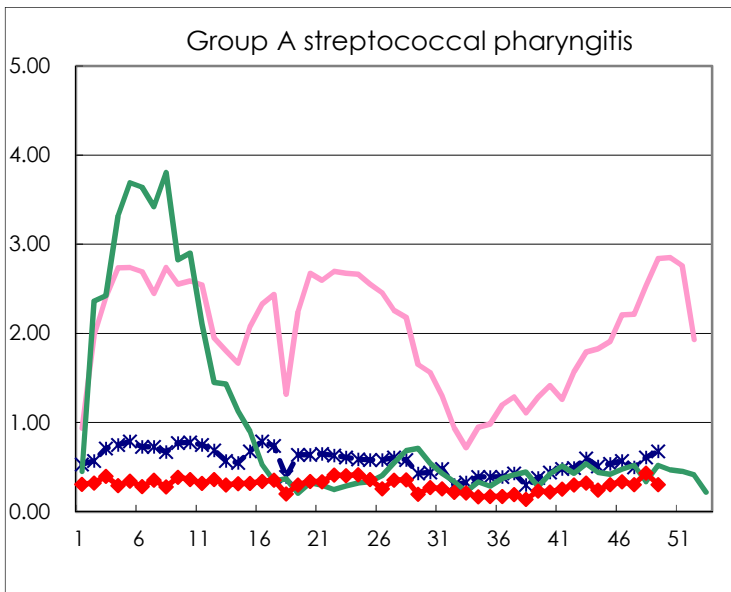
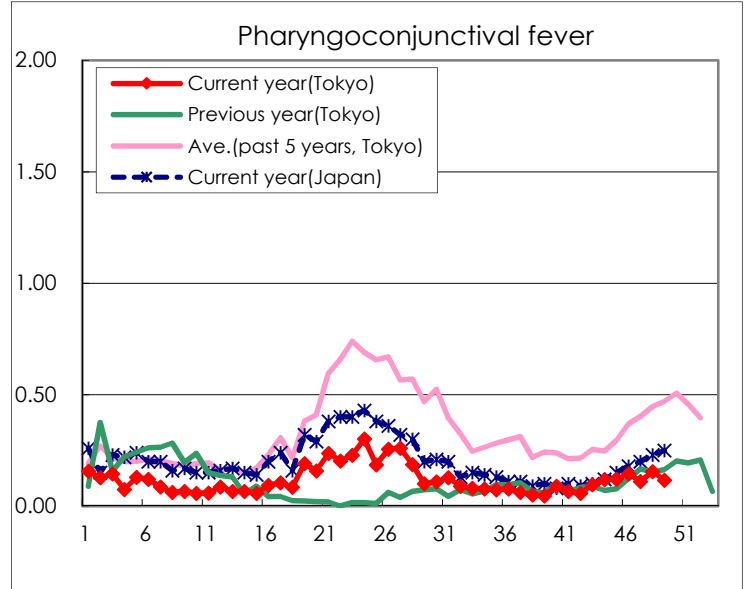
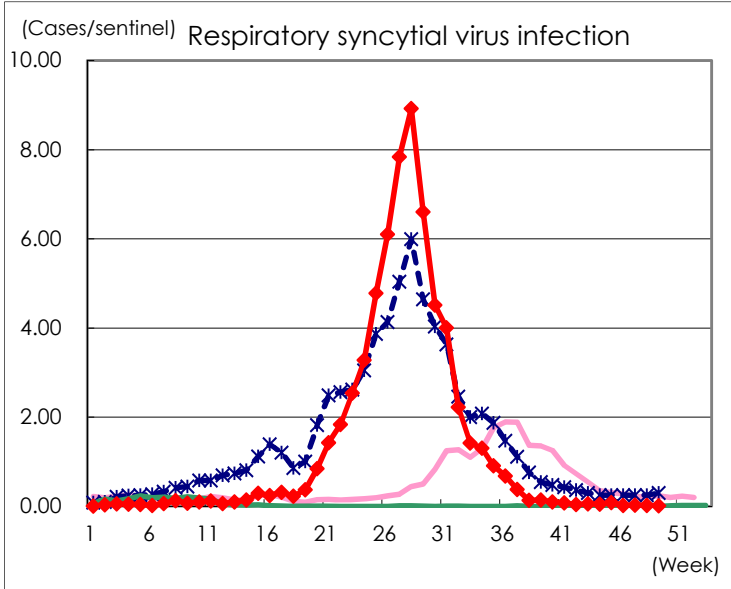
Category	Diseases	Tokyo					Japan	
		46th	47th	48th	49th	Cum 2021	49th	Cum 2021
V	Amebiasis	4		2		91	9	504
	Viral hepatitis(excluding hepatitis A and E)			2	1	46		182
	CRE infection	2	4	8	2	192	25	1,907
	Acute Flaccid Paralysis (excluding Acute poliomyelitis)					2		21
	Acute encephalitis(excluding JE and WNE)			3	1	23	3	315
	Cryptosporidiosis							5
	Creutzfeldt-Jakob disease					11		167
	Severe invasive streptococcal infections(TSLS)		4	3	4	79	13	604
	Acquired immunodeficiency syndrome (AIDS)	8	1	3	4	340	8	976
	Giardiasis	1				10		34
	Invasive <i>Haemophilus influenzae</i> disease				1	19		182
	Invasive meningococcal disease							2
	Invasive pneumococcal disease		2	1	7	122	20	1,297
	Varicella (limited to hospitalized case)		1	2	1	31	3	274
	Congenital rubella syndrome							1
	Syphilis	51	42	54	60	2,293	115	7,326
	Disseminated cryptococcosis					14	1	145
	Tetanus		1		1	4	1	90
	Vancomycin-resistant <i>S. aureus</i> infection							
	Vancomycin-resistant <i>Enterococcus</i> infection				1	12	1	118
	Pertussis	1	4	5	5	64	26	668
Rubella					2		12	
Measles						1	6	
MDRA infection					1		4	

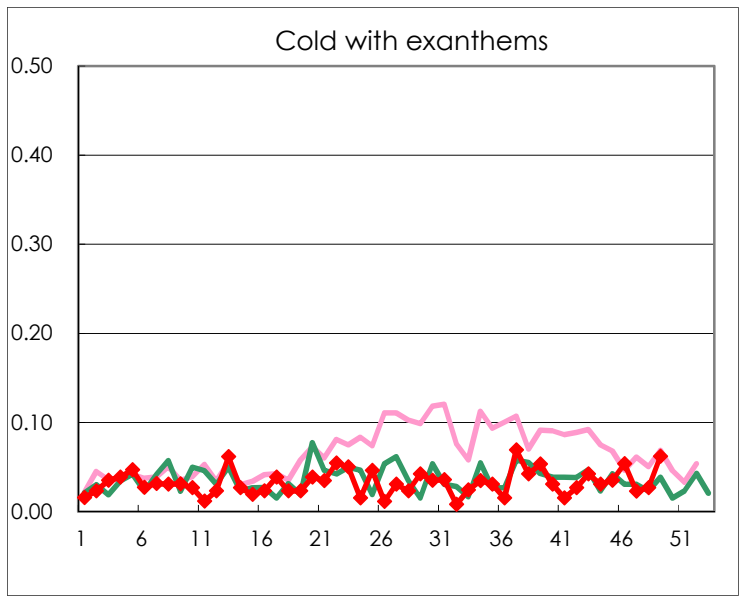
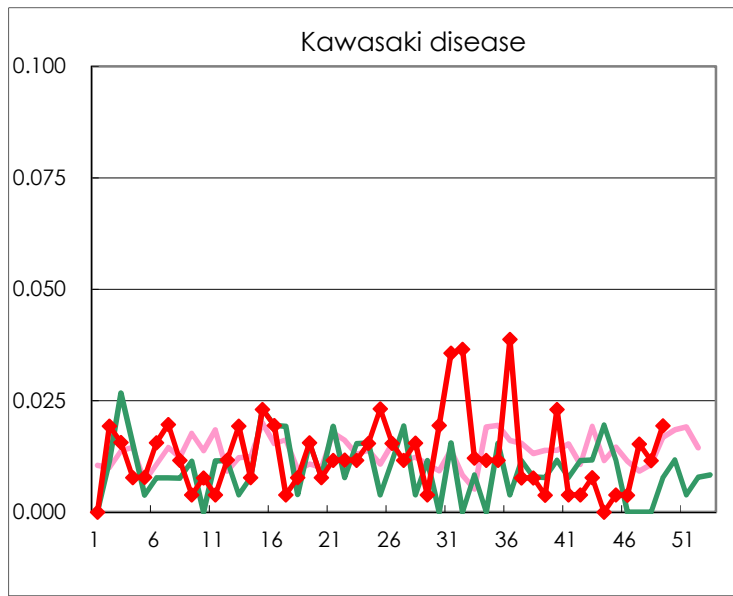
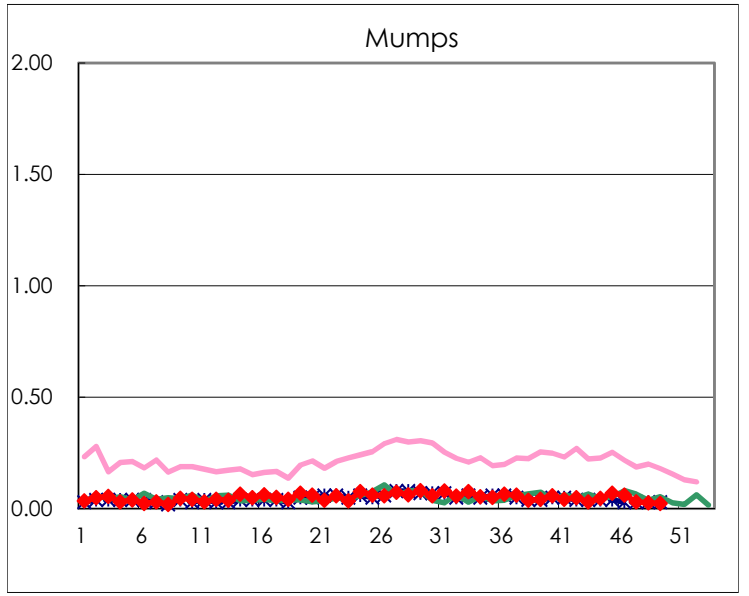
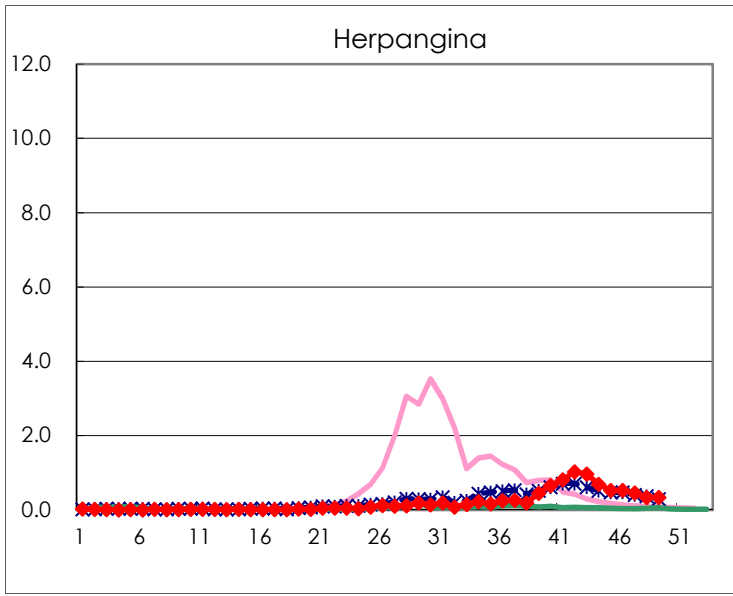
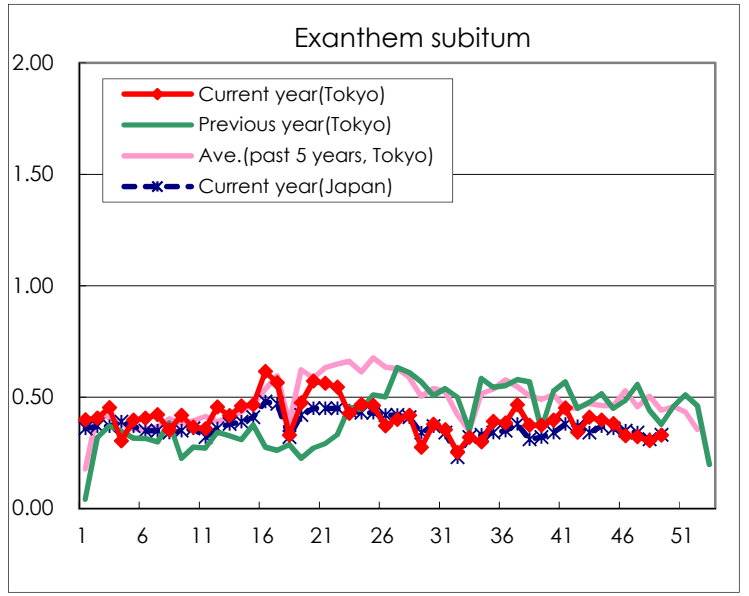
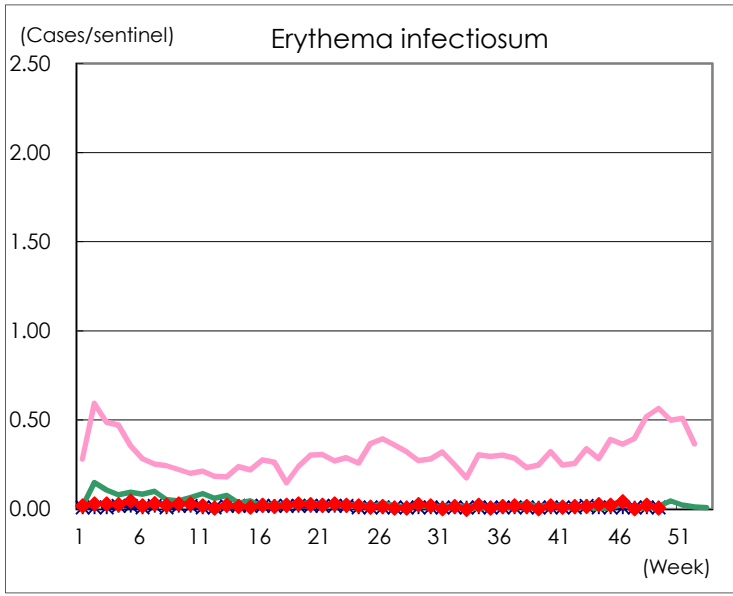
Number of patients with the diseases to be reported  
by the designated clinics and hospitals

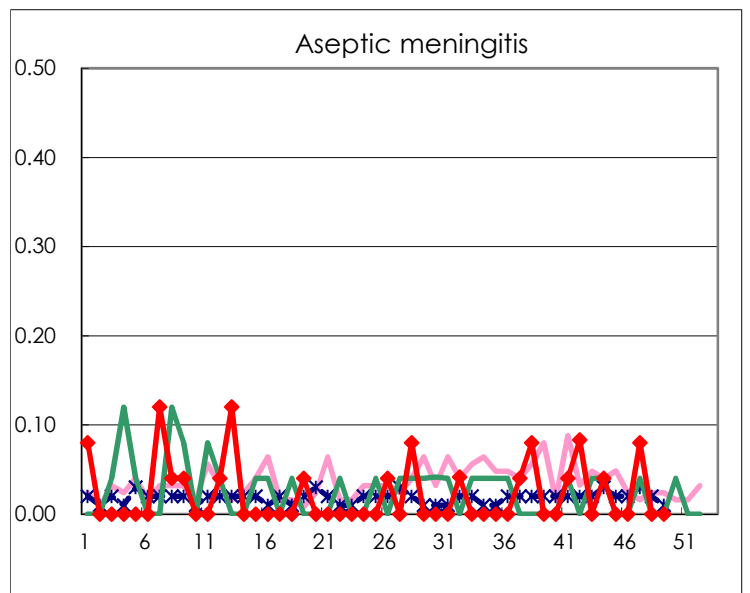
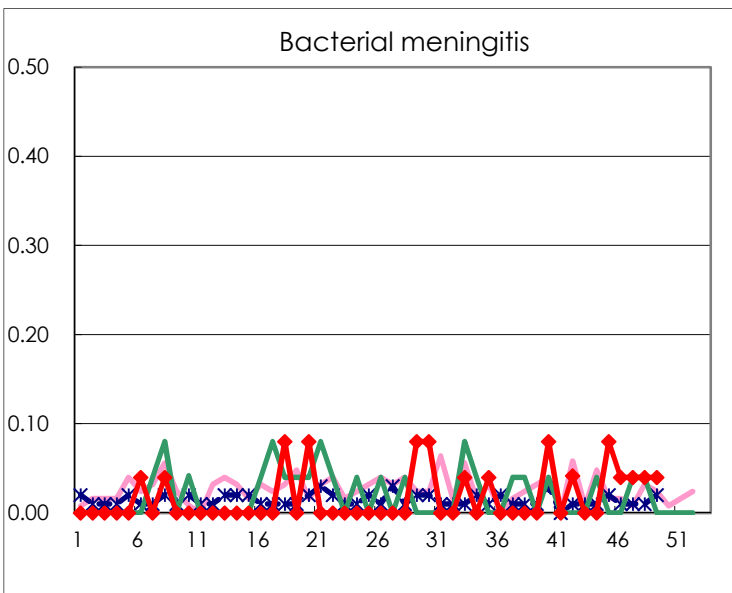
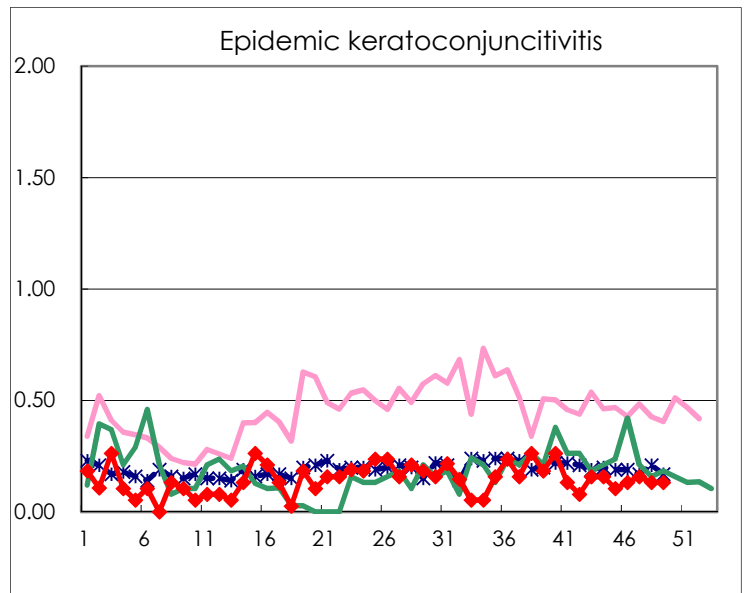
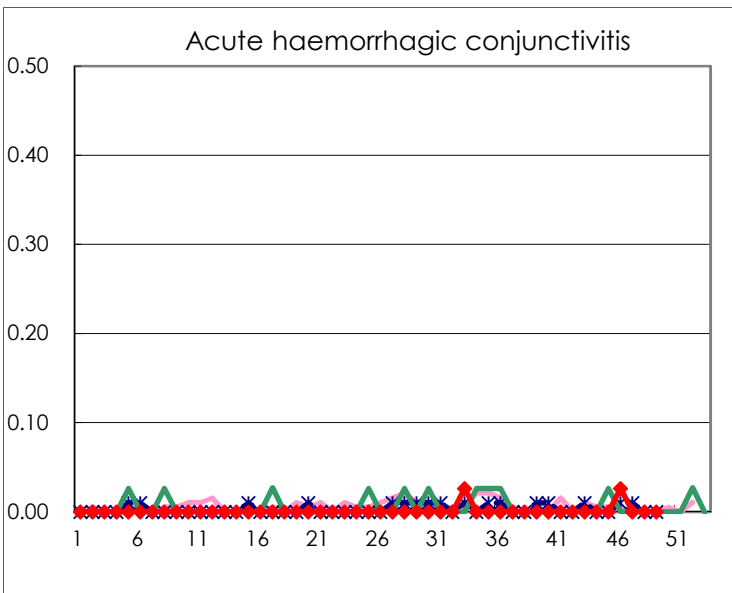
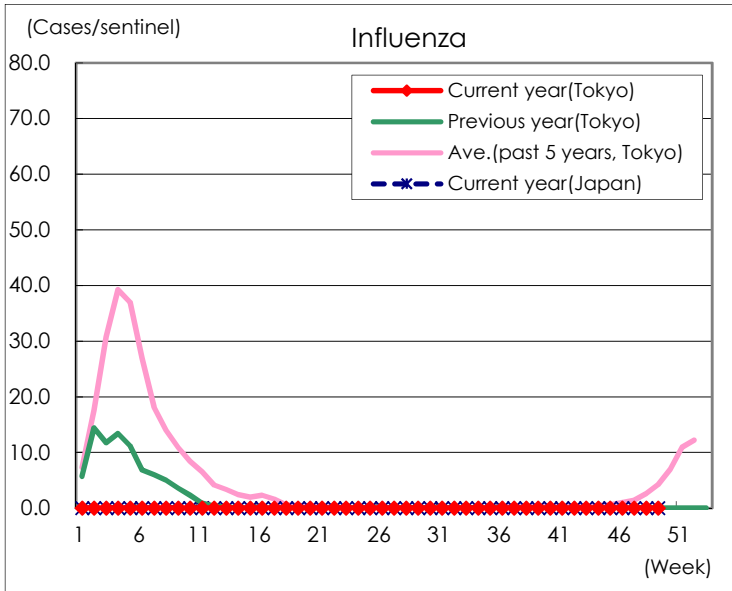
Diseases	Tokyo				
	46th	47th	48th	49th	/sentinel
Respiratory syncytial virus infection	5	6	5	3	0.01
Pharyngoconjunctival fever	38	29	40	30	0.12
Group A streptococcal pharyngitis	88	80	112	79	0.31
Infectious gastroenteritis	1,193	1,276	1,635	2,021	7.83
Chickenpox	24	32	24	37	0.14
Hand, foot, and mouth disease	275	249	222	197	0.76
Erythema infectiosum	11	1	6	2	0.01
Exanthem subitum	85	84	79	85	0.33
Herpangina	136	118	87	86	0.33
Mumps	16	8	7	6	0.02
Kawasaki disease	1	4	3	5	0.02
Cold with exanthems	14	6	7	16	0.06
Influenza	1				
Acute hemorrhagic conjunctivitis	1				
Epidemic keratoconjunctivitis	5	6	5	5	0.13
Bacterial meningitis	1	1	1	1	0.04
Aseptic meningitis		2			
Mycoplasma pneumonia			1		
Chlamydial pneumonia (excluding psittacosis)		1	1		
Infectious gastroenteritis (only by Rotavirus)				1	0.04
Influenza-Associated Hospitalizations				1	0.04

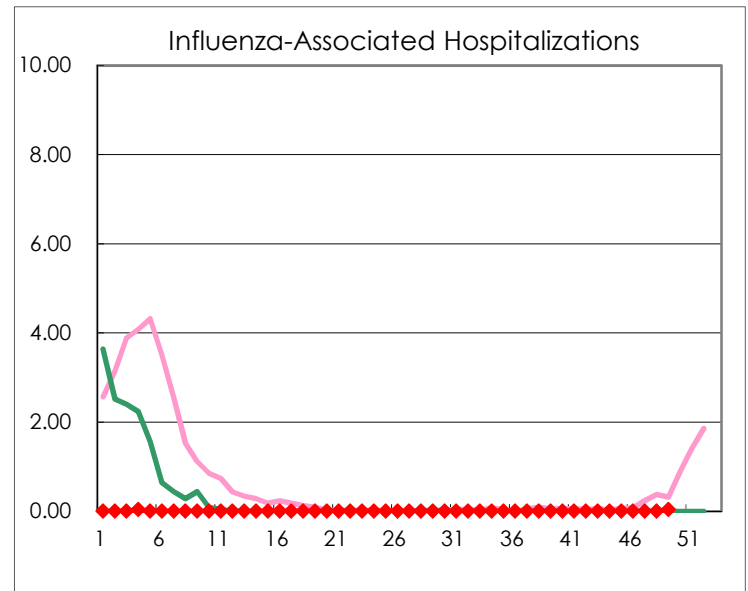
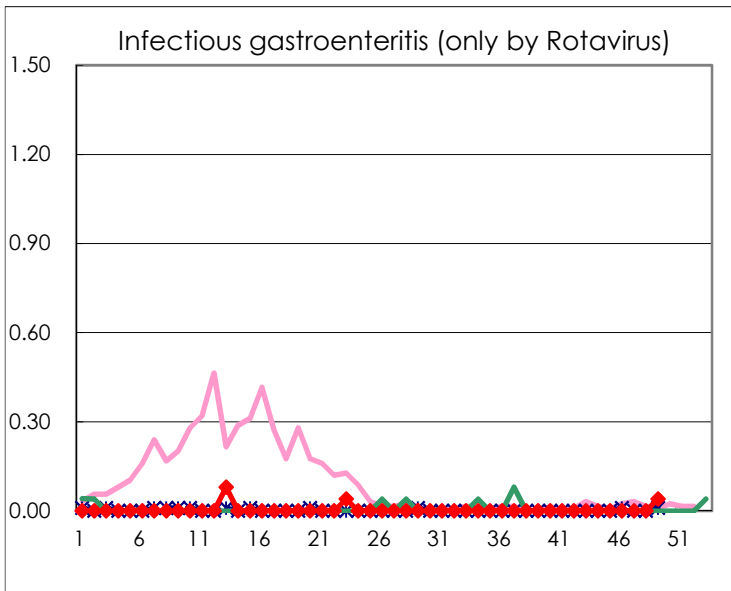
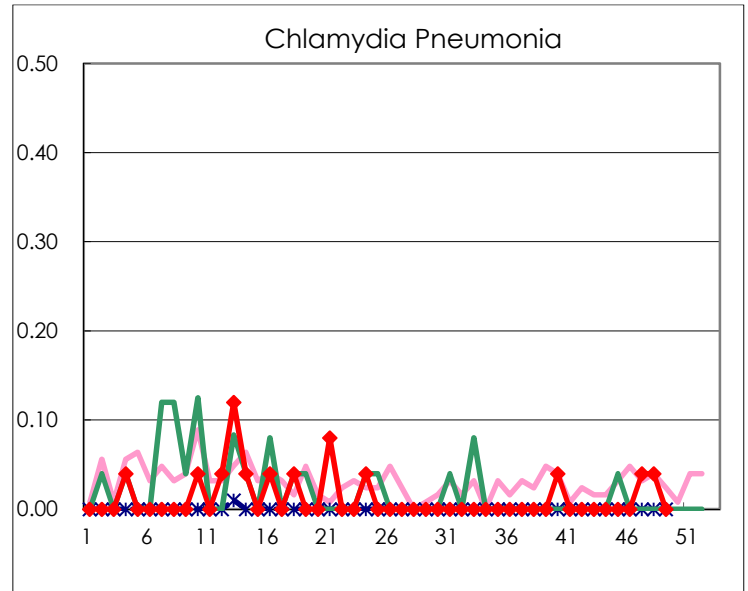
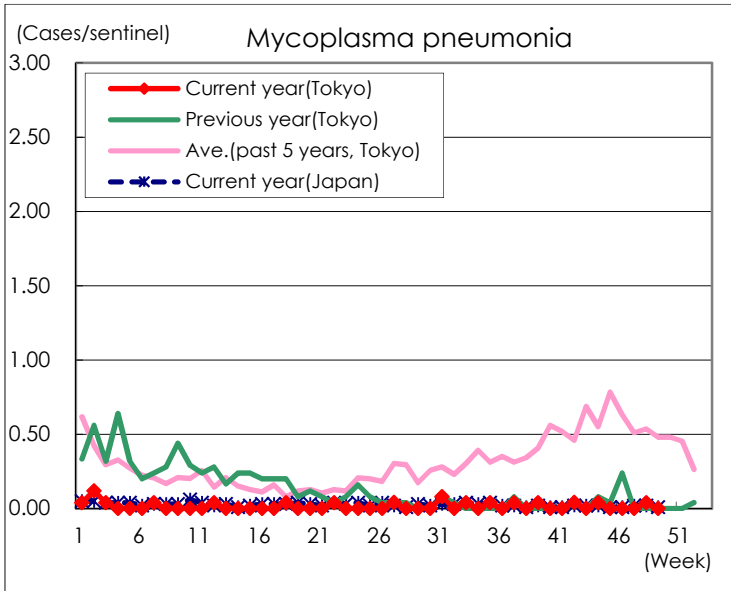
( Blank means 0. )

# Disease Trend Graph (weekly reported cases per sentinel in comparison)









Number of sentinel facilities for weekly reporting		
Types of sentinels	Number of sentinels	Sentinels having reported
Pediatric	264	258
Influenza	419	409
Ophthalmic	39	38
Specially-designated	25	25