
INFECTIOUS DISEASES WEEKLY REPORT

TOKYO IDWR

Tokyo Metropolitan Infectious Disease Surveillance Center

23 December 2021 / Number 50 (12/13 ~ 12/19)

Surveillance System in Tokyo, Japan

The infectious diseases which all physicians must report
All physicians must report to health centers the incidence of the diseases which are shown at page one. Health centers electronically report the individual cases to Tokyo Metropolitan Infectious Disease Surveillance Center.

The infectious diseases required to be reported by the sentinels
The numbers of patients who visit the sentinel clinics or hospitals during a week are reported to health centers in Tokyo. And they electronically report the numbers to Tokyo Metropolitan Infectious Disease Surveillance Center. We have about 500 sentinel clinics and hospitals in Tokyo.

Tokyo Metropolitan Institute of Public Health

TEL:81-3-3363-3213 FAX:81-3-5332-7365

e-mail:www@tokyo-eiken.go.jp

URL:idsc.tokyo-eiken.go.jp/

Number of patients with the diseases which all physicians must report

Category	Diseases	Tokyo					Japan	
		47th	48th	49th	50th	Cum 2021	50th	Cum 2021
I	Ebola hemorrhagic fever							
	Crimean-Congo hemorrhagic fever							
	Smallpox							
	South American hemorrhagic fever							
	Plague							
	Marburg disease							
	Lassa fever							
II	Acute poliomyelitis							
	Tuberculosis	32	45	27	49	2,132	272	15,200
	Diphtheria							
	Severe Acute Respiratory Syndrome(SARS)							
	Middle East Respiratory Syndrome (MERS)							
	Avian influenza H5N1							
	Avian influenza H7N9							
III	Cholera							
	Shigellosis					2		7
	Enterohemorrhagic Escherichia coli infection	4	2	6	4	317	57	3,109
	Typhoid fever					1		3
	Paratyphoid fever							
IV	Hepatitis E	3	2	3	3	107	7	418
	West Nile fever							
	Hepatitis A		1			13	1	67
	Echinococcosis					1		23
	Yellow fever							
	Psittacosis							8
	Omsk hemorrhagic fever							
	Relapsing fever							8
	Kyasanur forest disease							
	Q fever					1		1
	Rabies							
	Coccidioidomycosis							
	Monkeypox							
	Zika virus infection							
	Severe Fever with Thrombocytopenia Syndrome							109
	Hemorrhagic fever with renal syndrome							
	Western equine encephalitis							
	Tick-borne encephalitis							
	Anthrax							
	Chikungunya fever							
	Scrub typhus(Tsutsugamushi disease)	2	2	3	2	12	35	480
	Dengue fever							7
	Eastern equine encephalitis							
	Avian influenza (excluding H5N1 and H7N9)							
	Nipah virus infection							
	Japanese spotted fever					4	2	484
	Japanese encephalitis							3
	Hantavirus pulmonary syndrome							
	Herpes B virus infection							
	Glanders							
	Brucellosis							1
	Venezuelan equine encephalitis							
	Hendra virus infection							
Epidemic typhus								
Botulism					1		5	
Malaria					1	11	2	28
Tularemia								
Lyme disease							21	
Lyssavirus infection(excluding rabies)								
Rift valley fever								
Melioidosis								
Legionellosis	1	2	3	4	153	29	2,056	
Leptospirosis					3		33	
Rocky mountain spotted fever								

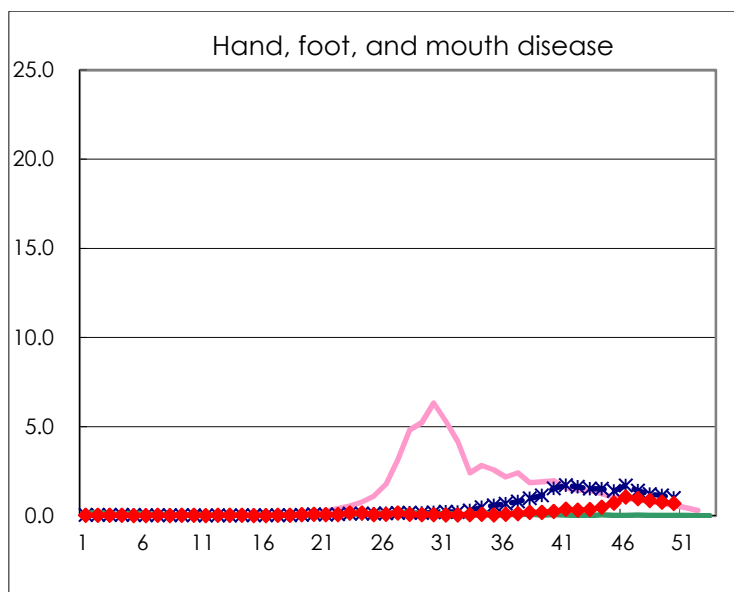
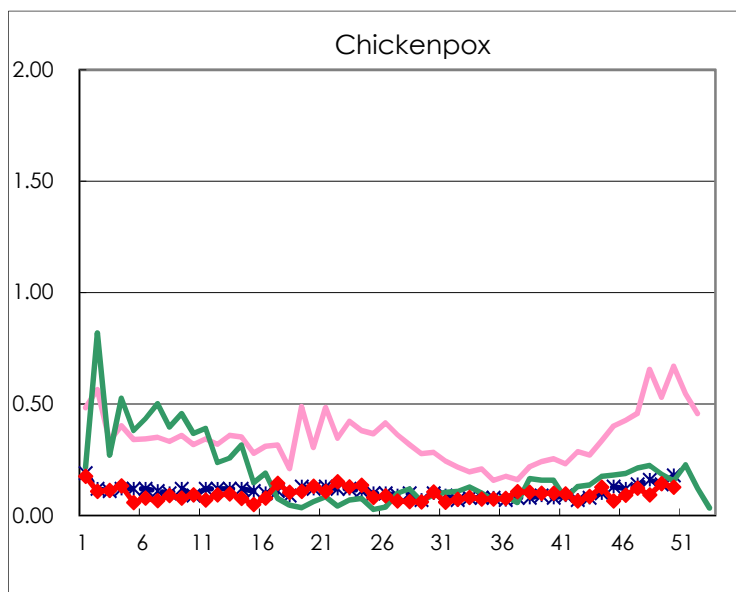
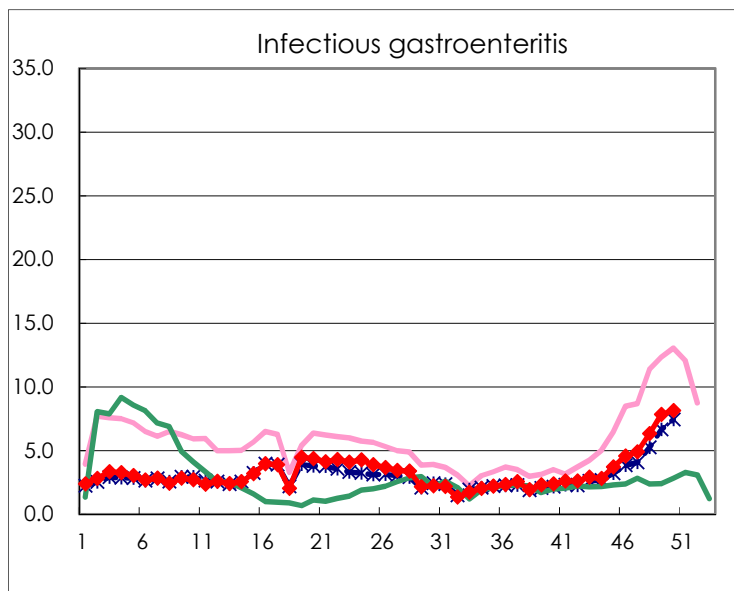
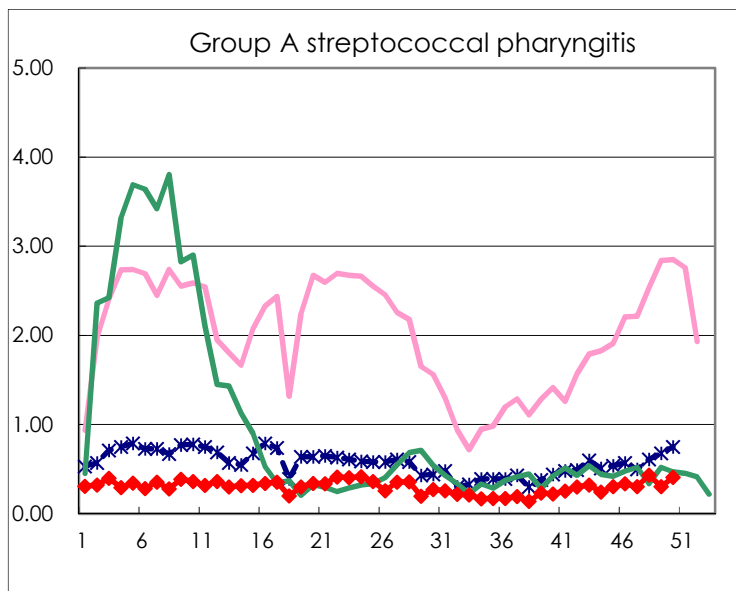
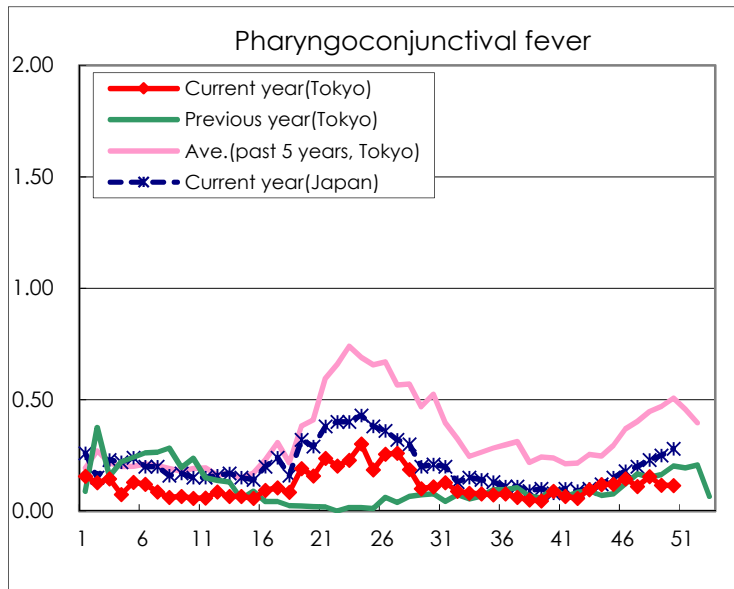
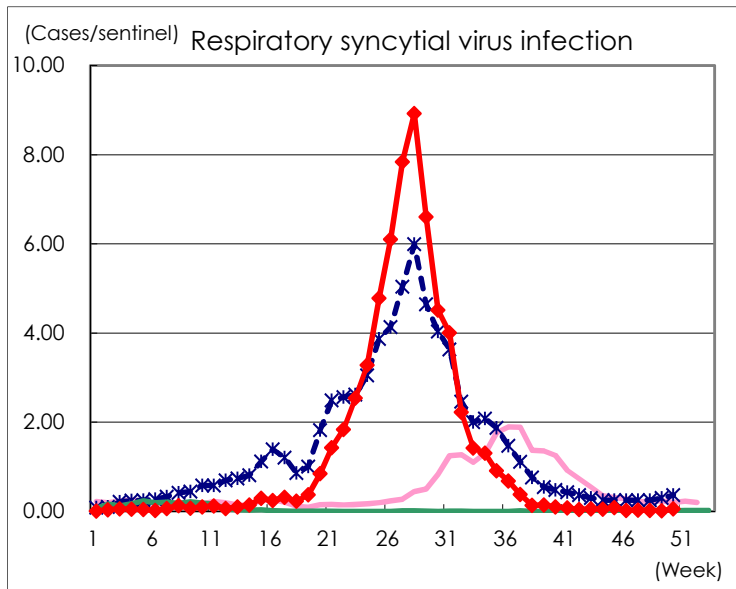
Category	Diseases	Tokyo					Japan	
		47th	48th	49th	50th	Cum 2021	50th	Cum 2021
V	Amebiasis		2		2	93	6	515
	Viral hepatitis(excluding hepatitis A and E)		2	1		46	2	187
	CRE infection	4	8	2	5	197	27	1,946
	Acute Flaccid Paralysis (excluding Acute poliomyelitis)					2		21
	Acute encephalitis(excluding JE and WNE)		3	1		23	5	322
	Cryptosporidiosis							5
	Creutzfeldt-Jakob disease				1	12	2	172
	Severe invasive streptococcal infections(TSLS)	4	3	5	1	81	4	614
	Acquired immunodeficiency syndrome (AIDS)	1	3	4	5	345	12	999
	Giardiasis					10	1	36
	Invasive <i>Haemophilus influenzae</i> disease			1		19		183
	Invasive meningococcal disease							2
	Invasive pneumococcal disease	2	1	7	2	124	20	1,327
	Varicella (limited to hospitalized case)	1	2	1	1	32	5	282
	Congenital rubella syndrome							1
	Syphilis	42	54	60	60	2,353	138	7,528
	Disseminated cryptococcosis					14	4	152
	Tetanus	1		1		4		90
	Vancomycin-resistant <i>S. aureus</i> infection							
	Vancomycin-resistant <i>Enterococcus</i> infection			1		12		120
	Pertussis	4	5	5	3	67	21	696
Rubella					2		12	
Measles							6	
MDRA infection					1	1	5	

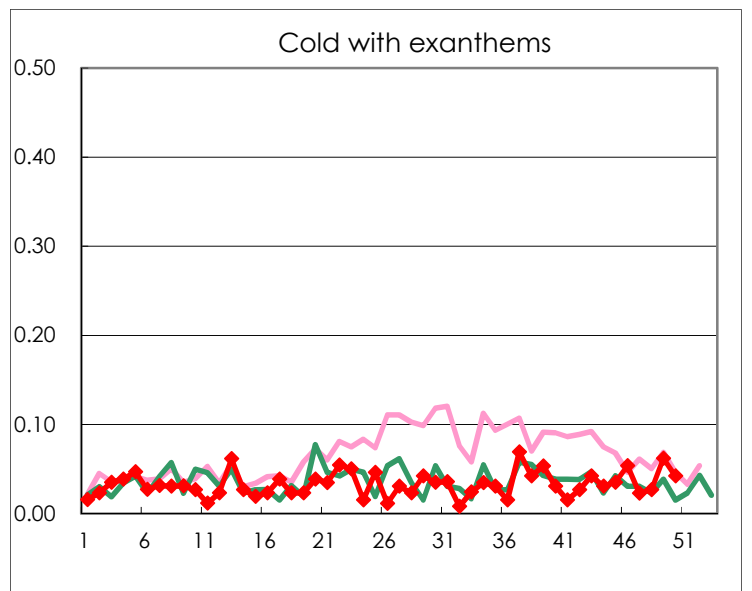
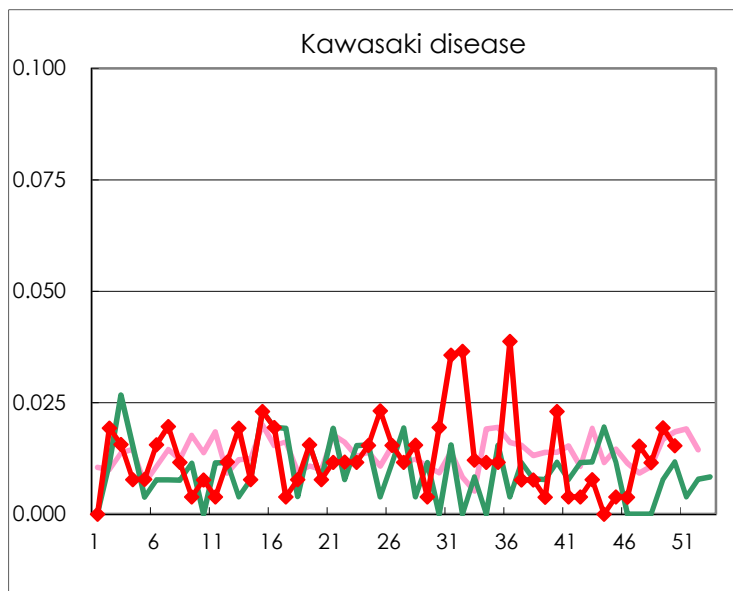
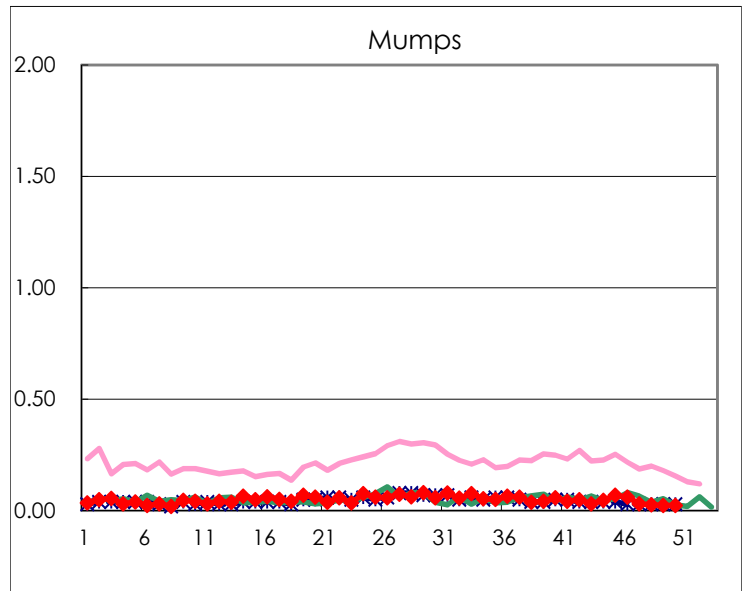
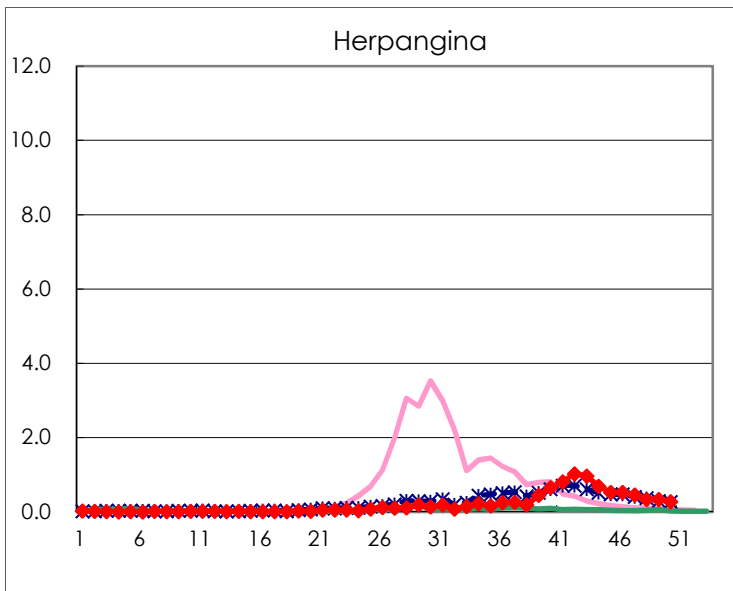
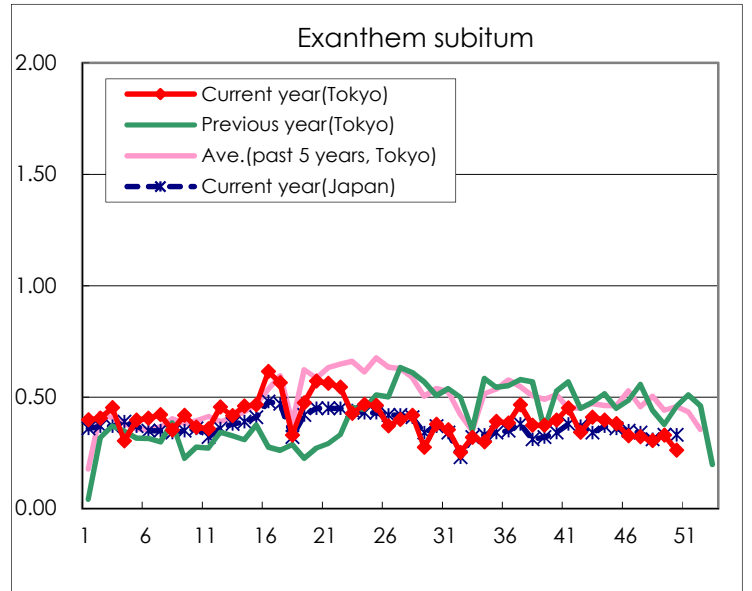
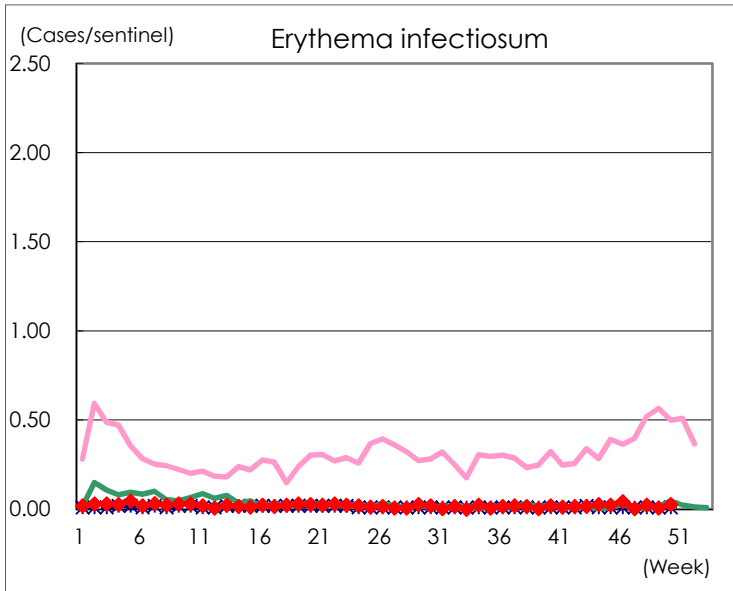
Number of patients with the diseases to be reported
by the designated clinics and hospitals

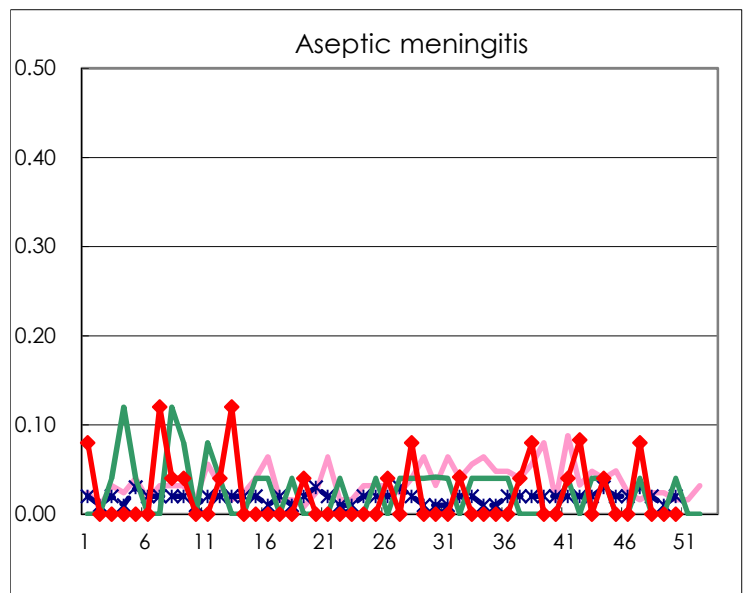
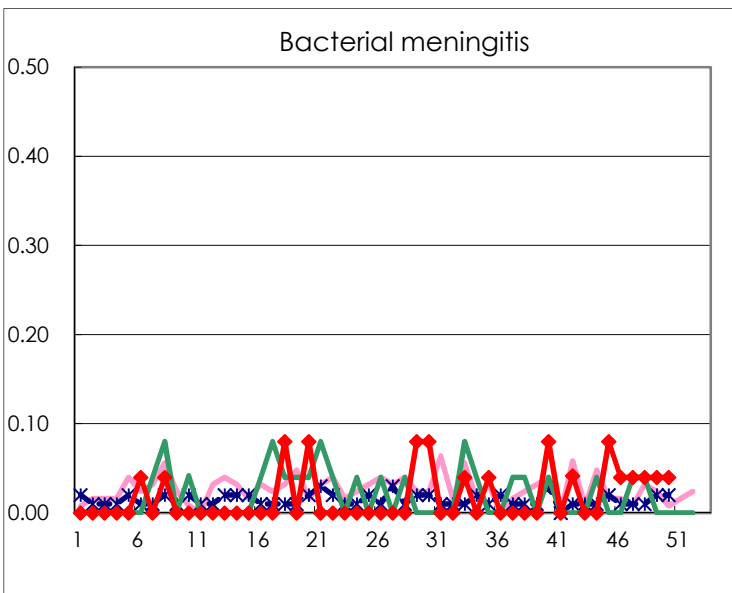
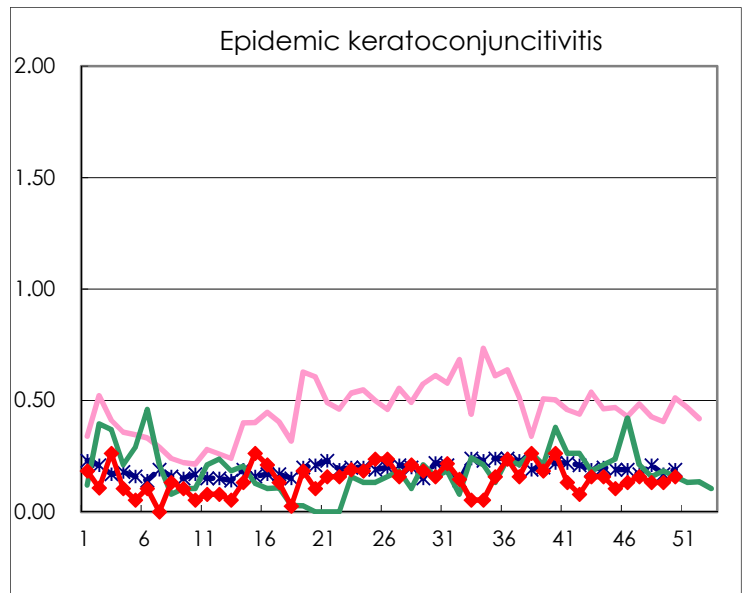
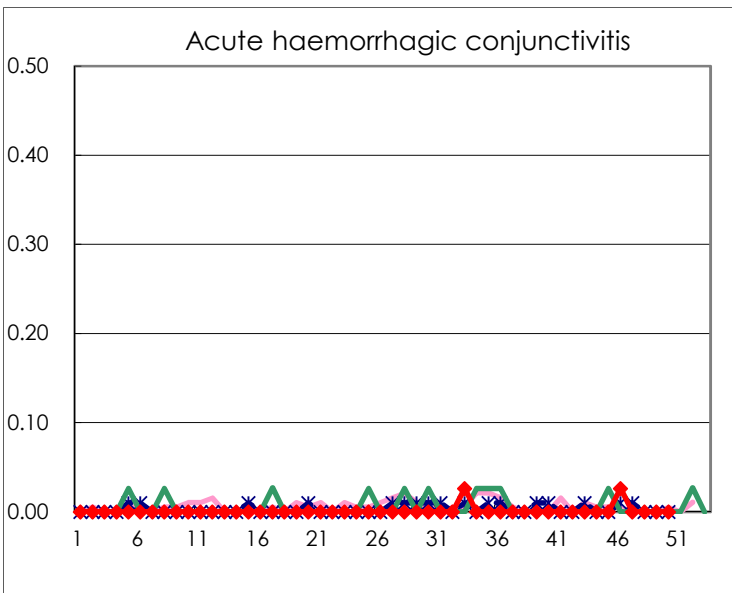
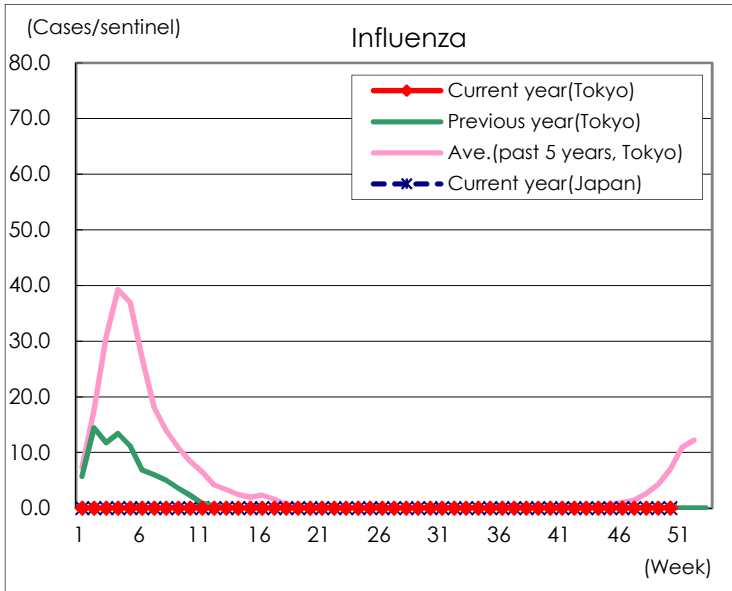
Diseases	Tokyo				
	47th	48th	49th	50th	/sentinel
Respiratory syncytial virus infection	6	5	3	14	0.05
Pharyngoconjunctival fever	29	40	30	30	0.12
Group A streptococcal pharyngitis	80	112	79	106	0.41
Infectious gastroenteritis	1,276	1,635	2,021	2,117	8.14
Chickenpox	32	24	37	33	0.13
Hand, foot, and mouth disease	249	222	197	180	0.69
Erythema infectiosum	1	6	2	7	0.03
Exanthem subitum	84	79	85	68	0.26
Herpangina	118	87	86	72	0.28
Mumps	8	7	6	6	0.02
Kawasaki disease	4	3	5	4	0.02
Cold with exanthems	6	7	16	11	0.04
Influenza				6	0.01
Acute hemorrhagic conjunctivitis					
Epidemic keratoconjunctivitis	6	5	5	6	0.16
Bacterial meningitis	1	1	1	1	0.04
Aseptic meningitis	2				
<i>Mycoplasma pneumoniae</i>		1			
Chlamydial pneumonia (excluding psittacosis)	1	1			
Infectious gastroenteritis (only by Rotavirus)			1		
Influenza-Associated Hospitalizations			1		

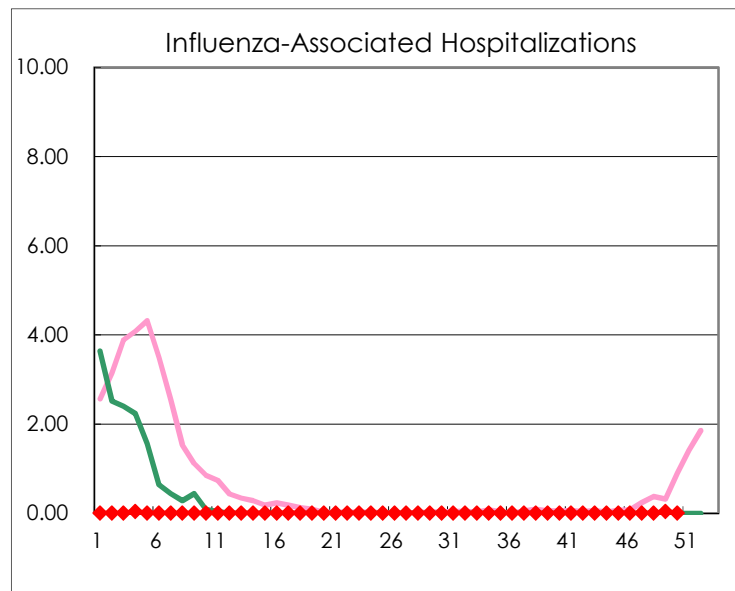
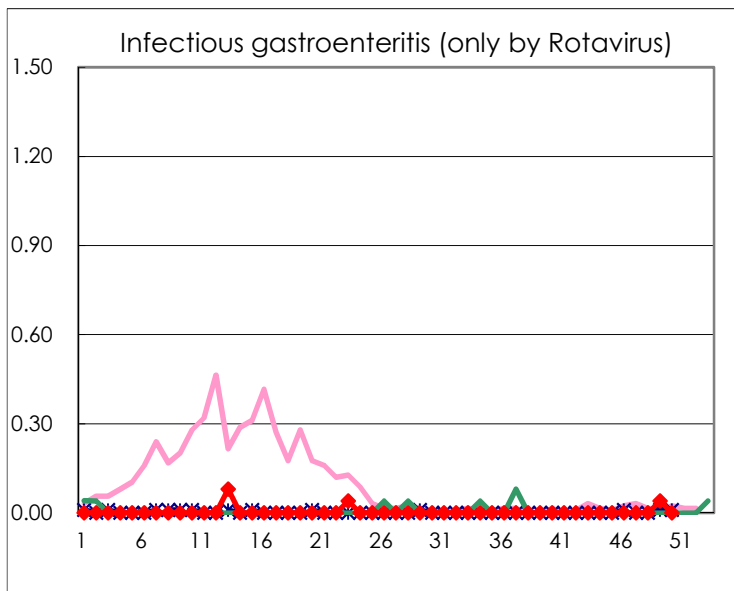
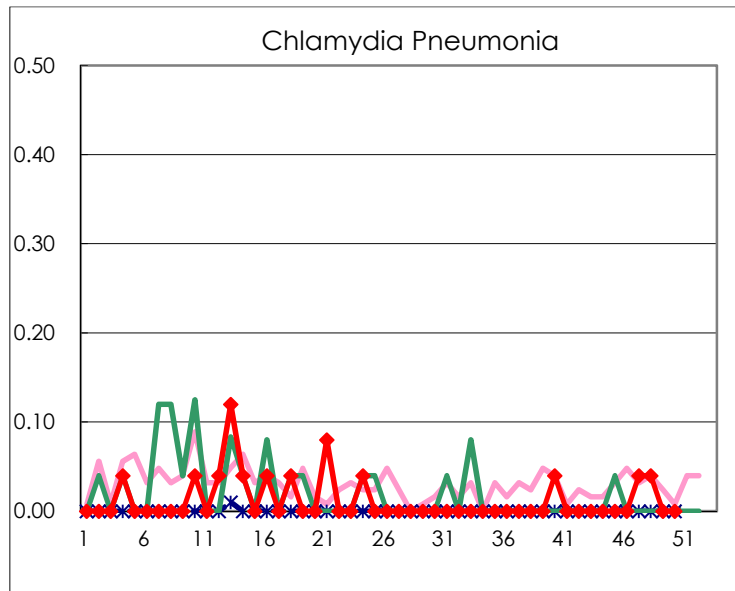
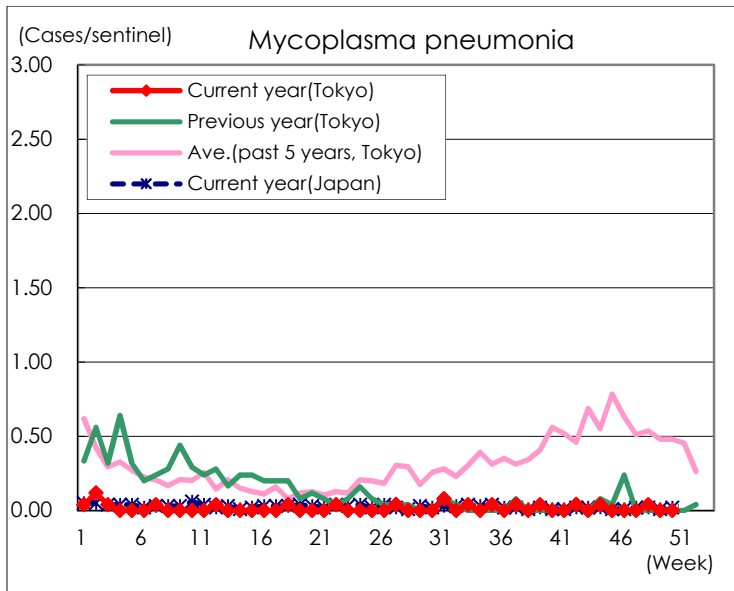
(Blank means 0.)

Disease Trend Graph (weekly reported cases per sentinel in comparison)









Number of sentinel facilities for weekly reporting		
Types of sentinels	Number of sentinels	Sentinels having reported
Pediatric	264	260
Influenza	419	412
Ophthalmic	39	38
Specially-designated	25	25