
INFECTIOUS DISEASES WEEKLY REPORT

TOKYO iDWR

Tokyo Metropolitan Infectious Disease Surveillance Center

6 January 2022 / Number 51
(12/20 ~ 12/26)

Surveillance System in Tokyo, Japan

The infectious diseases which all physicians must report
All physicians must report to health centers the incidence of the diseases which are shown at page one. Health centers electronically report the individual cases to Tokyo Metropolitan Infectious Disease Surveillance Center.

The infectious diseases required to be reported by the sentinels
The numbers of patients who visit the sentinel clinics or hospitals during a week are reported to health centers in Tokyo. And they electronically report the numbers to Tokyo Metropolitan Infectious Disease Surveillance Center. We have about 500 sentinel clinics and hospitals in Tokyo.

Tokyo Metropolitan Institute of Public Health

TEL:81-3-3363-3213 FAX:81-3-5332-7365

e-mail:www@tokyo-eiken.go.jp

URL:idsc.tokyo-eiken.go.jp/

Number of patients with the diseases which all physicians must report

Category	Diseases	Tokyo					Japan	
		48th	49th	50th	51st	Cum 2021	51st	Cum 2021
I	Ebola hemorrhagic fever							
	Crimean-Congo hemorrhagic fever							
	Smallpox							
	South American hemorrhagic fever							
	Plague							
	Marburg disease							
	Lassa fever							
II	Acute poliomyelitis							
	Tuberculosis	45	28	56	37	2,179	269	15,630
	Diphtheria							
	Severe Acute Respiratory Syndrome(SARS)							
	Middle East Respiratory Syndrome (MERS)							
	Avian influenza H5N1							
	Avian influenza H7N9							
III	Cholera							
	Shigellosis					2		7
	Enterohemorrhagic Escherichia coli infection	2	6	4	5	322	60	3,185
	Typhoid fever					1		3
	Paratyphoid fever							
IV	Hepatitis E	2	3	3	3	110	27	447
	West Nile fever							
	Hepatitis A	1				13	2	69
	Echinococcosis					1		23
	Yellow fever							
	Psittacosis							8
	Omsk hemorrhagic fever							
	Relapsing fever						2	10
	Kyasanur forest disease							
	Q fever					1		1
	Rabies							
	Coccidioidomycosis							
	Monkeypox							
	Zika virus infection							
	Severe Fever with Thrombocytopenia Syndrome							109
	Hemorrhagic fever with renal syndrome							
	Western equine encephalitis							
	Tick-borne encephalitis							
	Anthrax							
	Chikungunya fever							
	Scrub typhus(Tsutsugamushi disease)	2	3	2		12	26	518
	Dengue fever							7
	Eastern equine encephalitis							
	Avian influenza (excluding H5N1 and H7N9)							
	Nipah virus infection							
	Japanese spotted fever					4		486
	Japanese encephalitis							3
	Hantavirus pulmonary syndrome							
	Herpes B virus infection							
	Glanders							
	Brucellosis							1
	Venezuelan equine encephalitis							
	Hendra virus infection							
Epidemic typhus								
Botulism					1		5	
Malaria			1		11		28	
Tularemia								
Lyme disease						1	23	
Lyssavirus infection(excluding rabies)								
Rift valley fever								
Melioidosis								
Legionellosis	2	3	4	4	157	29	2,087	
Leptospirosis					3		33	
Rocky mountain spotted fever								

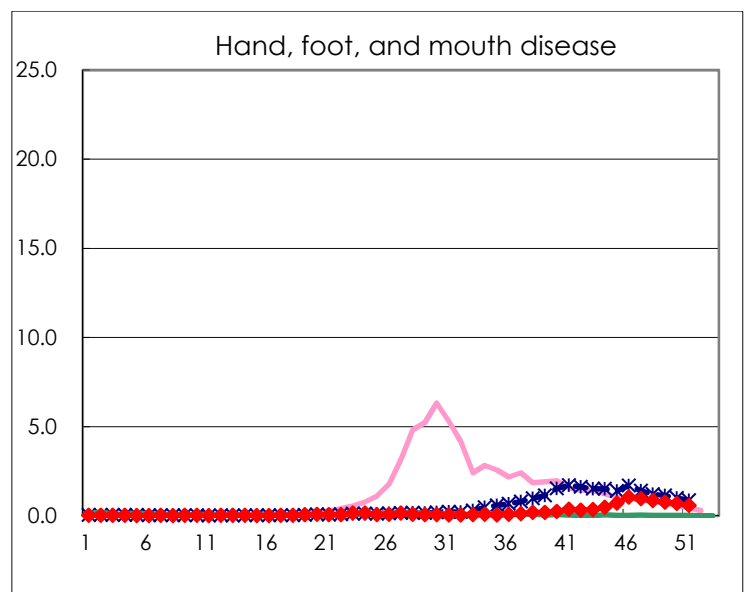
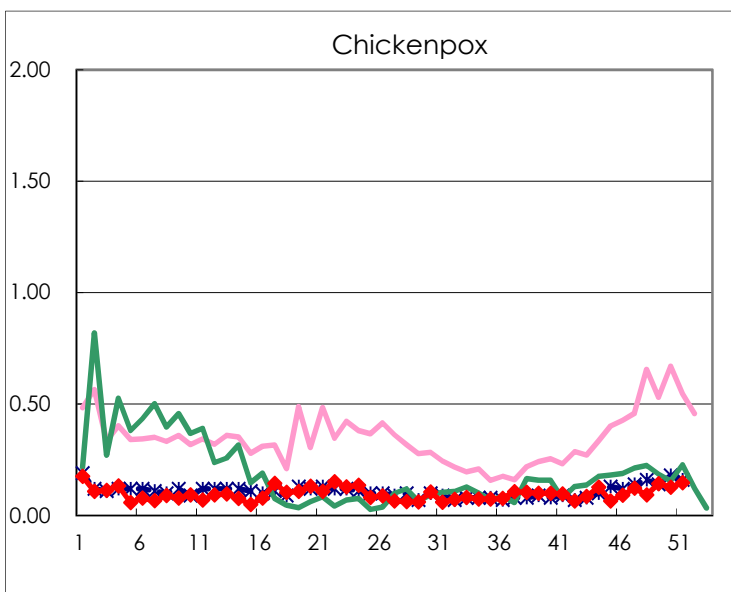
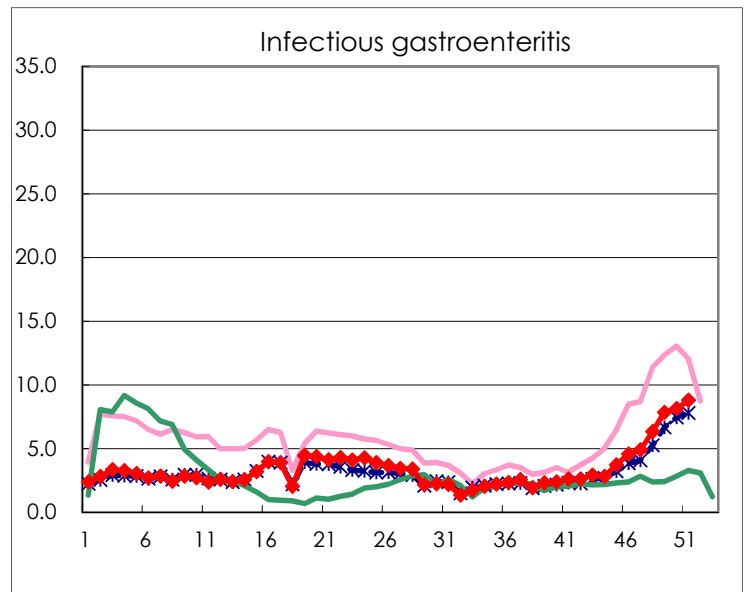
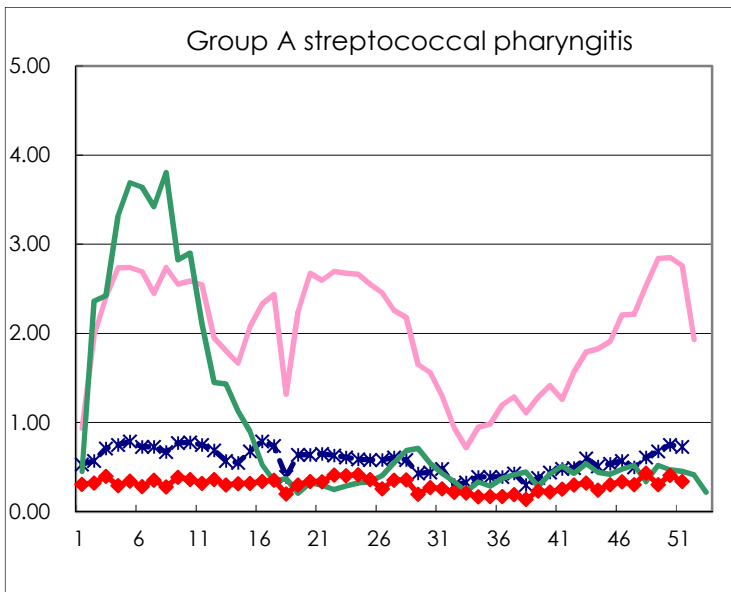
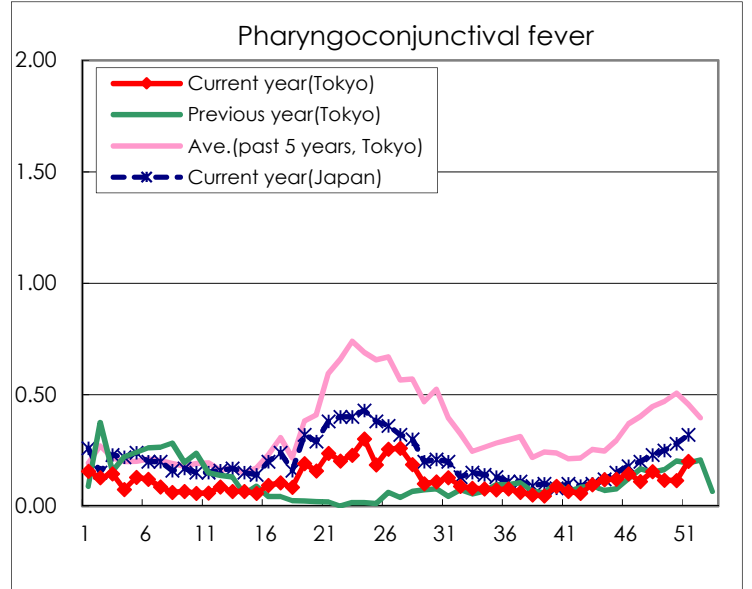
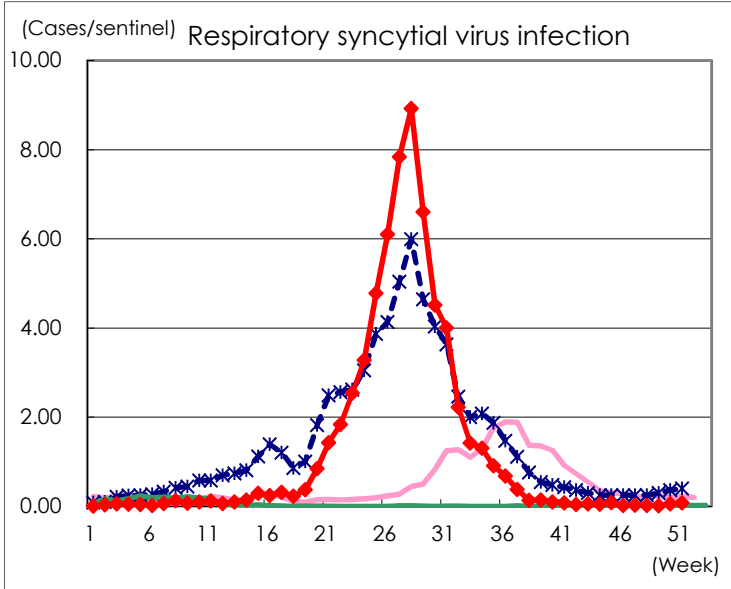
Category	Diseases	Tokyo					Japan	
		48th	49th	50th	51st	Cum 2021	51st	Cum 2021
V	Amebiasis	2		2	3	96	3	522
	Viral hepatitis(excluding hepatitis A and E)	2	1		1	47	8	199
	CRE infection	8	2	5	10	207	30	2,009
	Acute Flaccid Paralysis (excluding Acute poliomyelitis)					2		21
	Acute encephalitis(excluding JE and WNE)	3	1		2	26	3	329
	Cryptosporidiosis							5
	Creutzfeldt-Jakob disease			1		12	1	178
	Severe invasive streptococcal infections(TSLS)	3	5	2	3	85	15	634
	Acquired immunodeficiency syndrome (AIDS)	3	4	6	4	350	14	1,032
	Giardiasis					10		36
	Invasive <i>Haemophilus influenzae</i> disease		1		1	20	4	191
	Invasive meningococcal disease							1
	Invasive pneumococcal disease	1	7	3	2	127	22	1,365
	Varicella (limited to hospitalized case)	2	1	1	1	33	8	294
	Congenital rubella syndrome							1
	Syphilis	54	60	60	59	2,413	169	7,790
	Disseminated cryptococcosis					14	4	157
	Tetanus		1			4	1	91
	Vancomycin-resistant <i>S. aureus</i> infection							
	Vancomycin-resistant <i>Enterococcus</i> infection		1			12		123
	Pertussis	5	5	3		67	26	725
Rubella					2		12	
Measles							6	
MDRA infection					1		5	

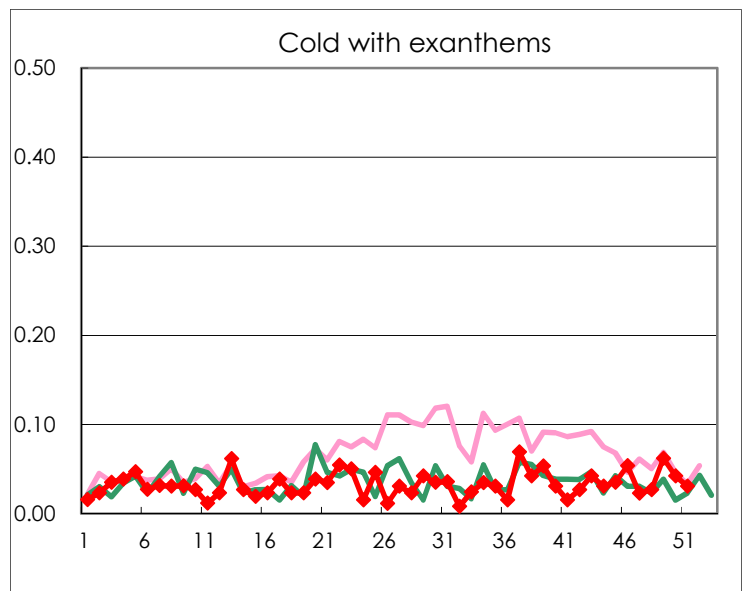
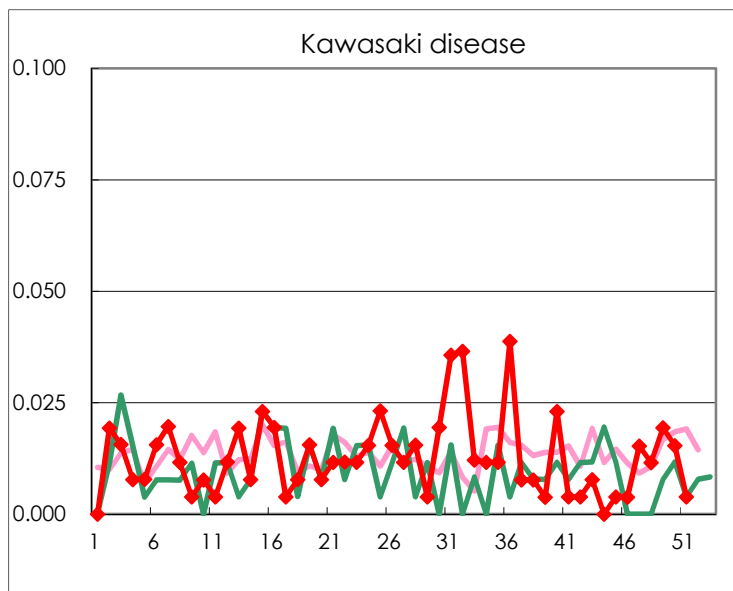
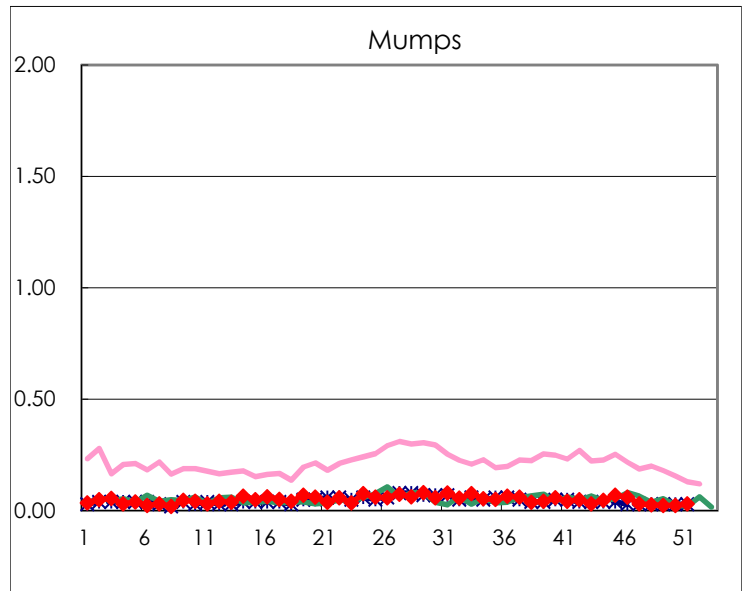
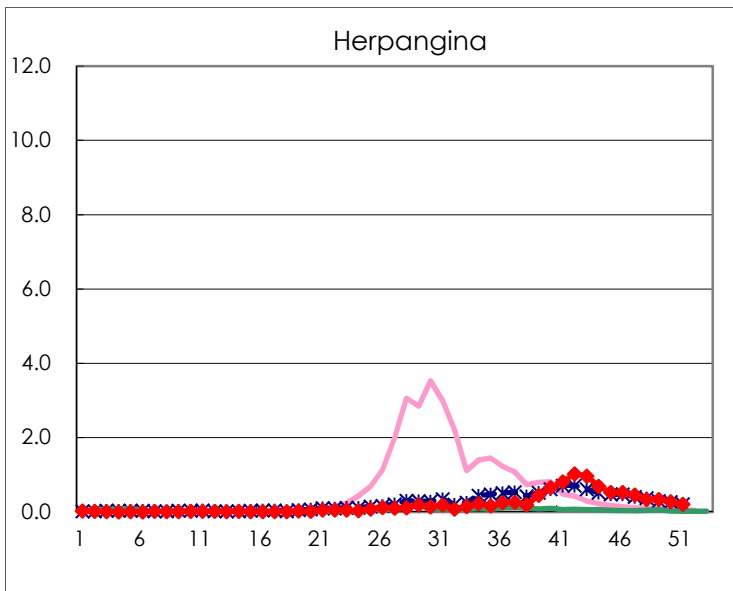
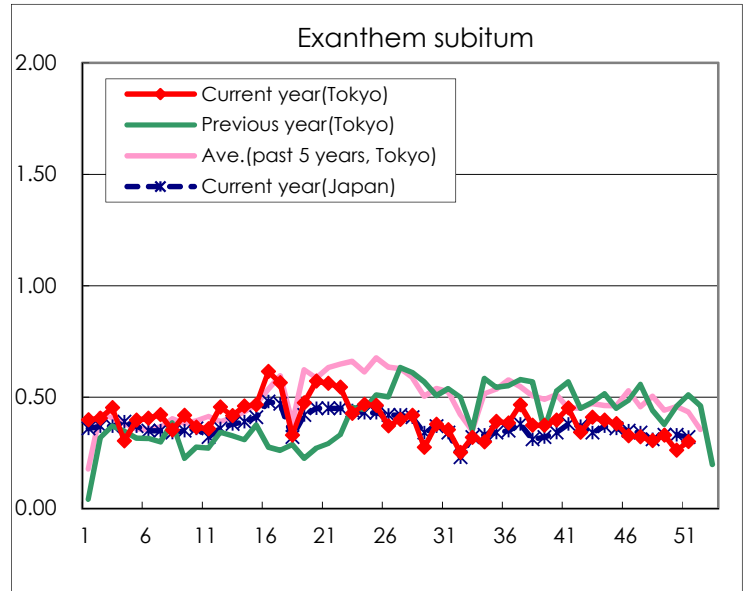
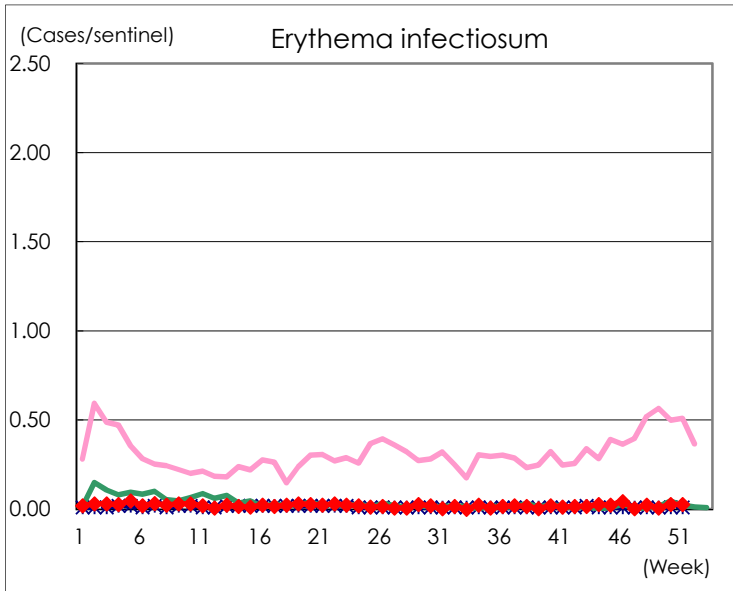
Number of patients with the diseases to be reported
by the designated clinics and hospitals

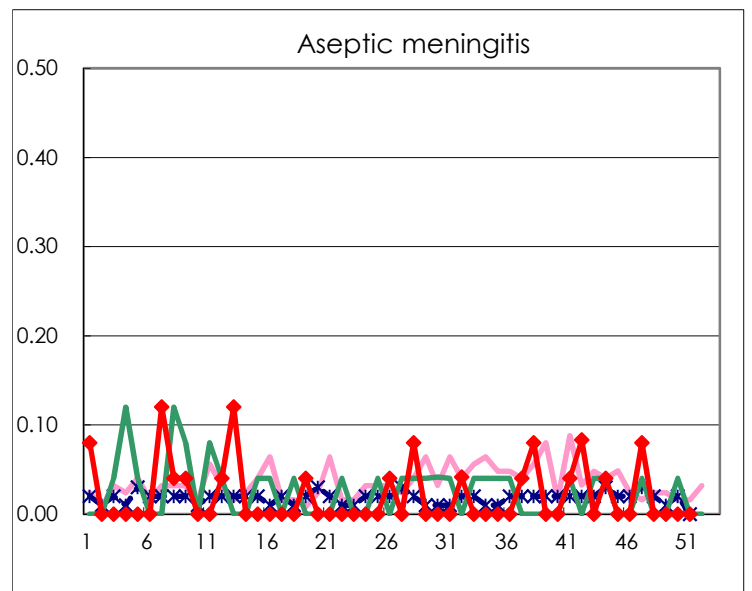
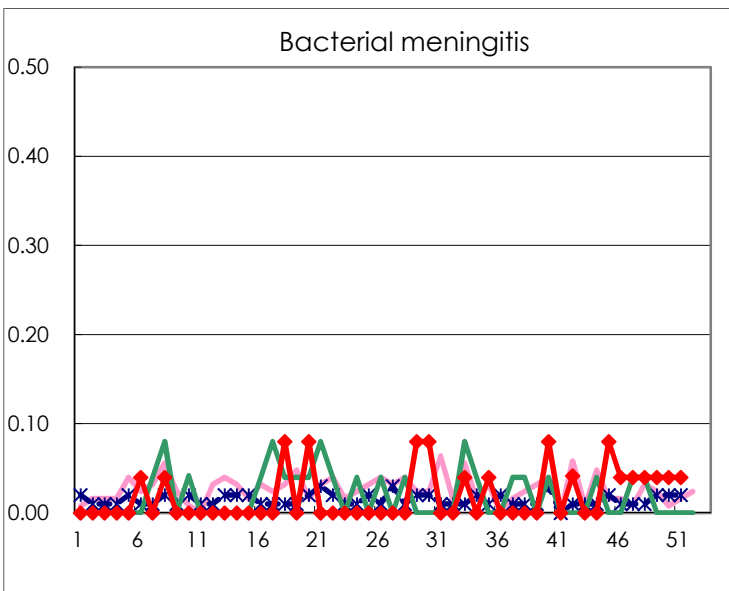
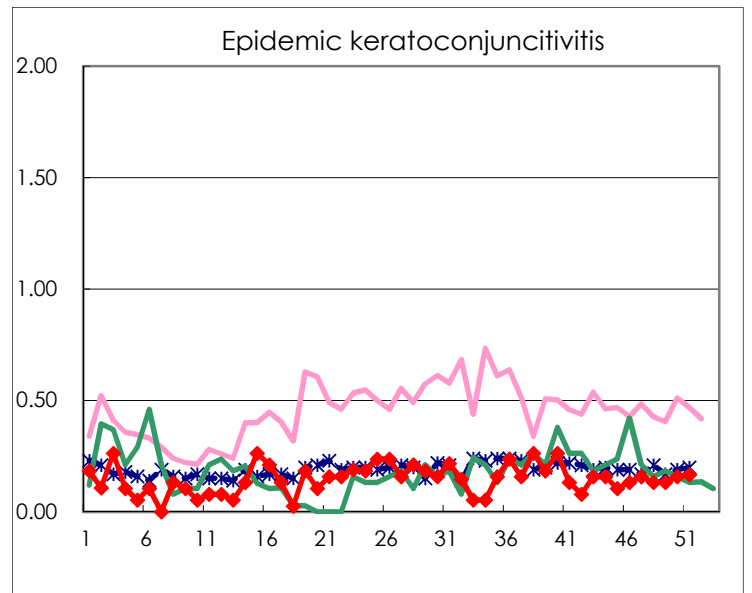
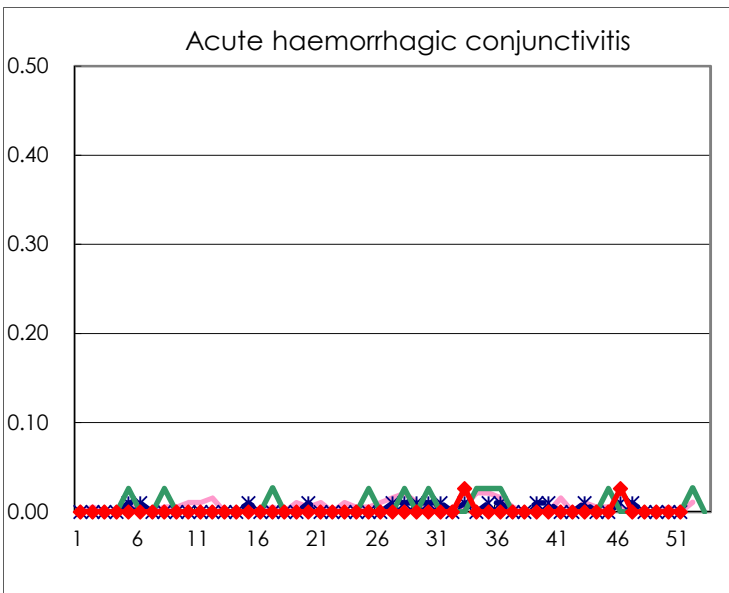
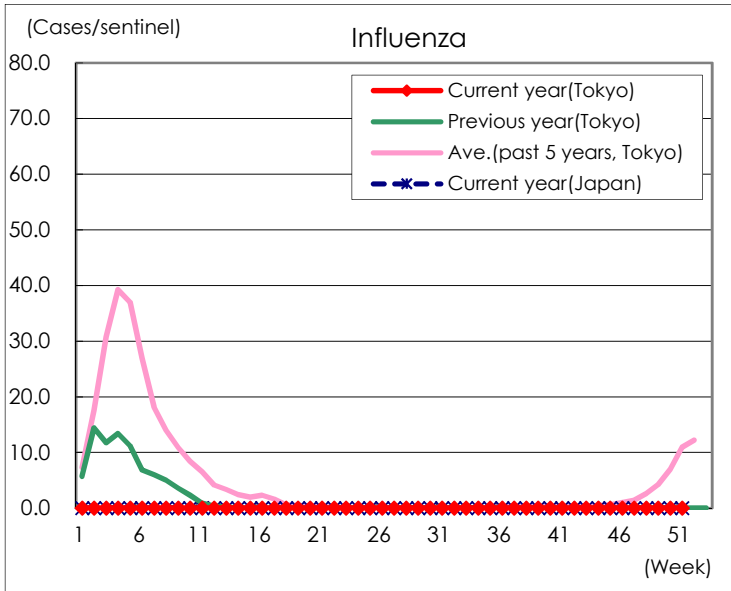
Diseases	Tokyo				
	48th	49th	50th	51st	/sentinel
Respiratory syncytial virus infection	5	3	14	19	0.07
Pharyngoconjunctival fever	40	30	30	52	0.20
Group A streptococcal pharyngitis	112	79	106	88	0.34
Infectious gastroenteritis	1,635	2,021	2,117	2,272	8.77
Chickenpox	24	37	33	38	0.15
Hand, foot, and mouth disease	222	197	180	151	0.58
Erythema infectiosum	6	2	7	7	0.03
Exanthem subitum	79	85	68	78	0.30
Herpangina	87	86	72	53	0.20
Mumps	7	6	6	8	0.03
Kawasaki disease	3	5	4	1	0.00
Cold with exanthems	7	16	11	8	0.03
Influenza			6	1	0.00
Acute hemorrhagic conjunctivitis					
Epidemic keratoconjunctivitis	5	5	6	6	0.17
Bacterial meningitis	1	1	1	1	0.04
Aseptic meningitis					
<i>Mycoplasma pneumoniae</i>	1				
Chlamydial pneumonia (excluding psittacosis)	1			2	0.08
Infectious gastroenteritis (only by Rotavirus)		1			
Influenza-Associated Hospitalizations		1			

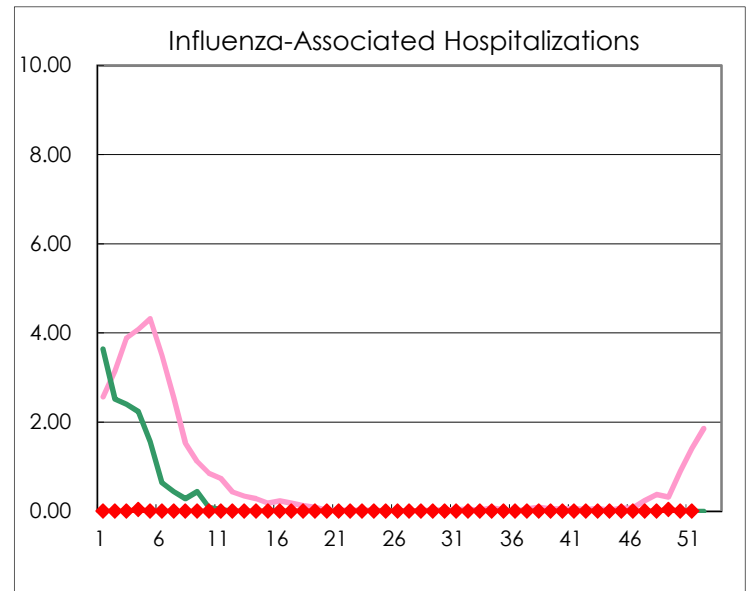
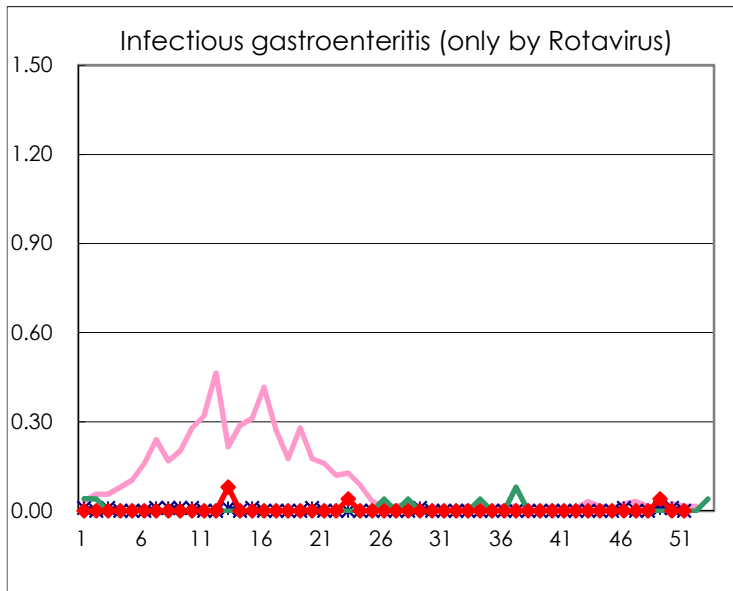
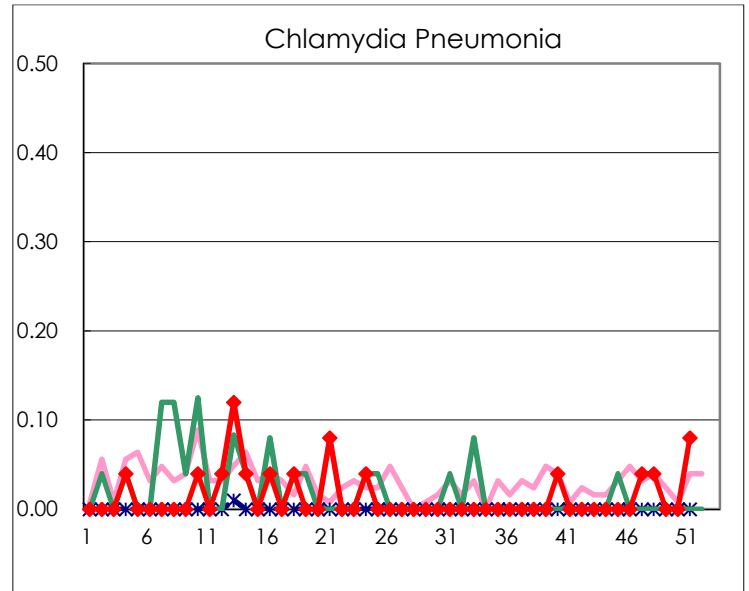
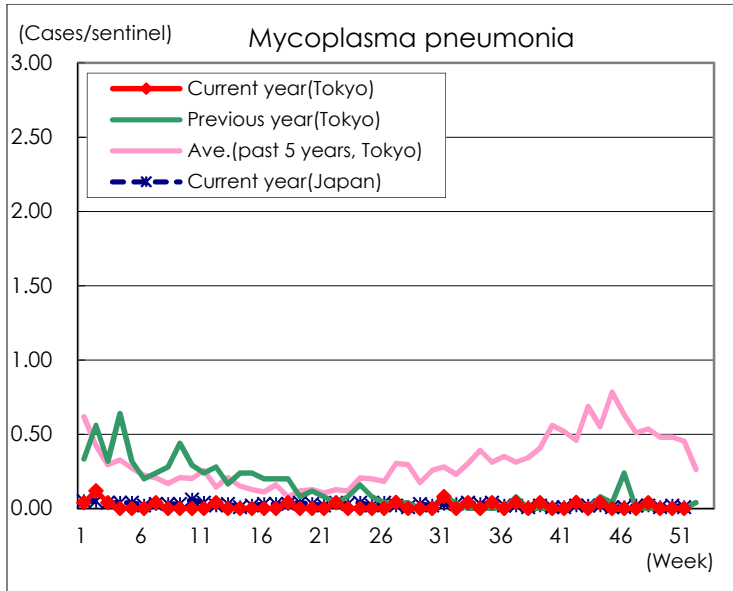
(Blank means 0.)

Disease Trend Graph (weekly reported cases per sentinel in comparison)









Number of sentinel facilities for weekly reporting		
Types of sentinels	Number of sentinels	Sentinels having reported
Pediatric	264	259
Influenza	419	410
Ophthalmic	39	36
Specially-designated	25	25