
INFECTIOUS DISEASES WEEKLY REPORT

TOKYO IDWR

Tokyo Metropolitan Infectious Disease Surveillance Center

23 June 2022 / Number 24
(6/13 ~ 6/19)

Surveillance System in Tokyo, Japan

The infectious diseases which all physicians must report
All physicians must report to health centers the incidence of the diseases which are shown at page one. Health centers electronically report the individual cases to Tokyo Metropolitan Infectious Disease Surveillance Center.

The infectious diseases required to be reported by the sentinels
The numbers of patients who visit the sentinel clinics or hospitals during a week are reported to health centers in Tokyo. And they electronically report the numbers to Tokyo Metropolitan Infectious Disease Surveillance Center. We have about 500 sentinel clinics and hospitals in Tokyo.

Tokyo Metropolitan Institute of Public Health

TEL:81-3-3363-3213 FAX:81-3-5332-7365

e-mail:tmiph@section.metro.tokyo.jp

URL:idsc.tmiph.metro.tokyo.lg.jp/

Number of patients with the diseases which all physicians must report

Category	Diseases	Tokyo					Japan	
		21st	22nd	23rd	24th	Cum 2022	24th	Cum 2022
I	Ebola hemorrhagic fever							
	Crimean-Congo hemorrhagic fever							
	Smallpox							
	South American hemorrhagic fever							
	Plague							
	Marburg disease							
	Lassa fever							
II	Acute poliomyelitis							
	Tuberculosis	41	42	42	45	932	274	6,666
	Diphtheria							
	Severe Acute Respiratory Syndrome(SARS)							
	Middle East Respiratory Syndrome (MERS)							
	Avian influenza H5N1							
	Avian influenza H7N9							
III	Cholera							
	Shigellosis							12
	Enterohemorrhagic Escherichia coli infection	13	11	9	15	98	81	755
	Typhoid fever					1		7
	Paratyphoid fever	1				1		2
IV	Hepatitis E	6	2	3	1	68	8	214
	West Nile fever							
	Hepatitis A			1	1	3	4	41
	Echinococcosis	1				3		13
	Yellow fever							
	Psittacosis					1		4
	Omsk hemorrhagic fever							
	Relapsing fever							5
	Kyasanur forest disease							
	Q fever							
	Rabies							
	Coccidioidomycosis							
	Monkeypox							
	Zika virus infection							
	Severe Fever with Thrombocytopenia Syndrome						3	54
	Hemorrhagic fever with renal syndrome							
	Western equine encephalitis							
	Tick-borne encephalitis							
	Anthrax							
	Chikungunya fever							
	Scrub typhus(Tsutsugamushi disease)			1		3	3	90
	Dengue fever					3		13
	Eastern equine encephalitis							
	Avian influenza (excluding H5N1 and H7N9)							
	Nipah virus infection							
	Japanese spotted fever						17	104
	Japanese encephalitis							1
	Hantavirus pulmonary syndrome							
	Herpes B virus infection							
	Glanders							
	Brucellosis							
	Venezuelan equine encephalitis							
	Hendra virus infection							
Epidemic typhus								
Botulism					1		1	
Malaria				1	1	2	8	
Tularemia								
Lyme disease							2	
Lyssavirus infection(excluding rabies)								
Rift valley fever								
Melioidosis							1	
Legionellosis	9	3	1	5	50	52	722	
Leptospirosis		1			1	1	3	
Rocky mountain spotted fever								

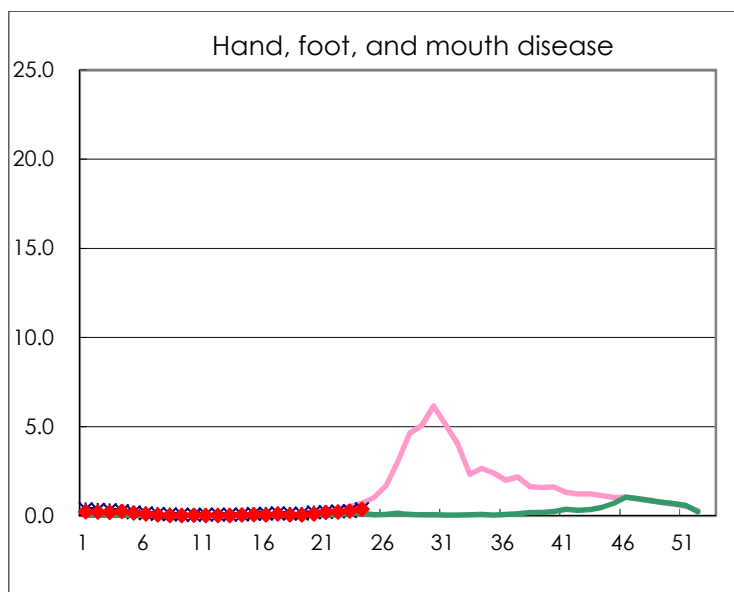
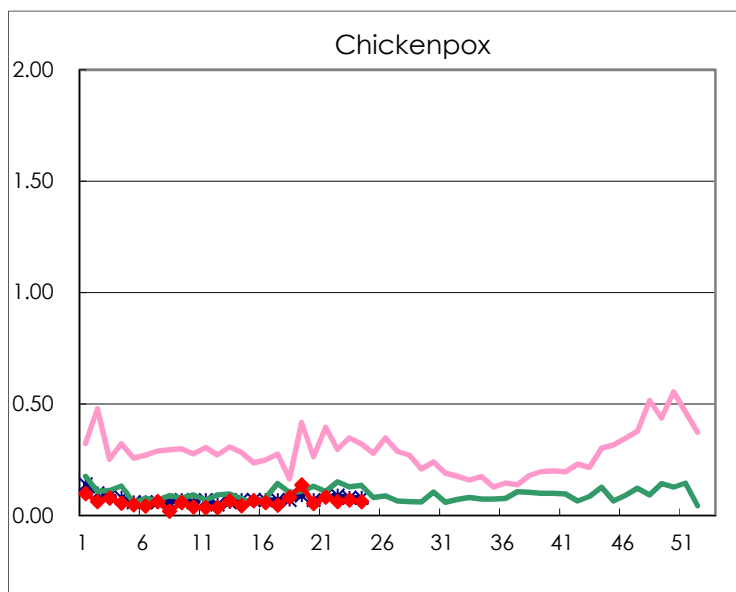
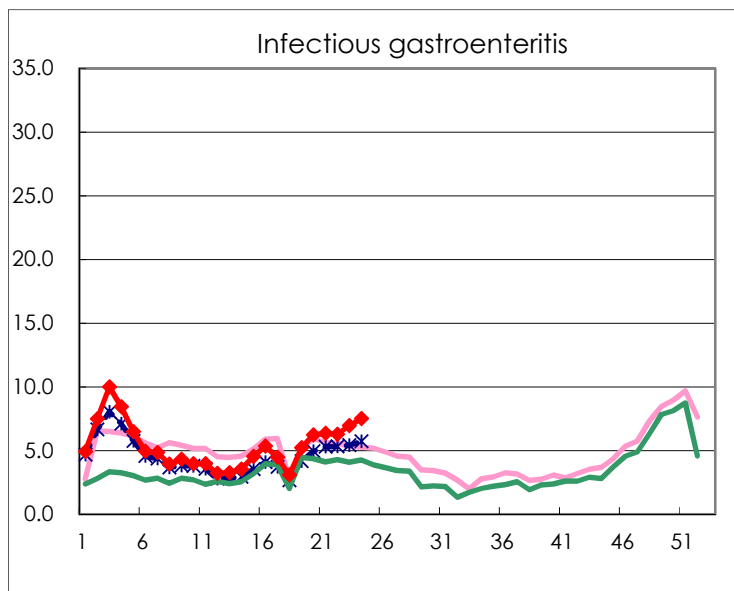
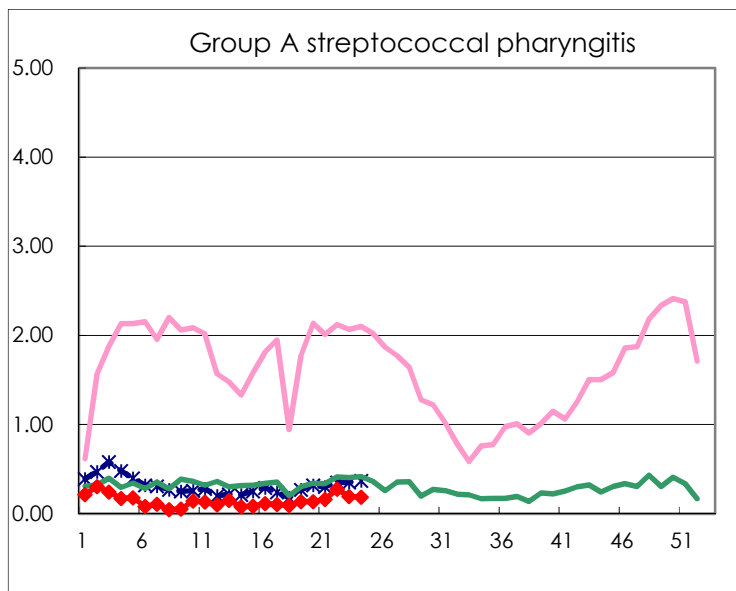
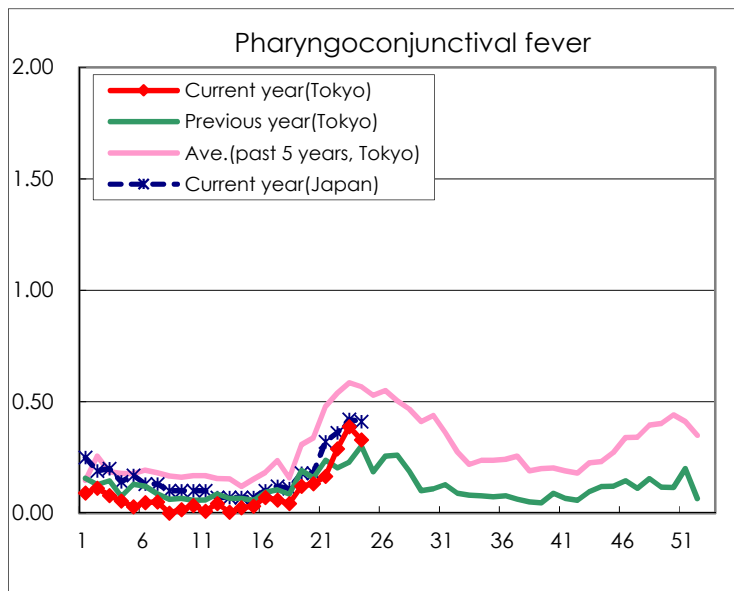
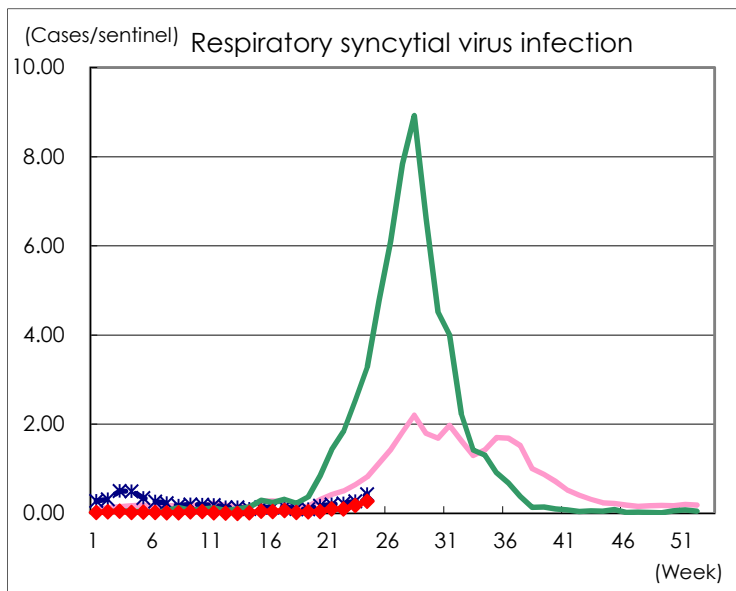
Category	Diseases	Tokyo					Japan	
		21st	22nd	23rd	24th	Cum 2022	24th	Cum 2022
V	Amebiasis	3	1		2	63	5	232
	Viral hepatitis(excluding hepatitis A and E)	1		3		20	6	96
	CRE infection	4	2	9	5	91	23	708
	Acute Flaccid Paralysis (excluding Acute poliomyelitis)						2	11
	Acute encephalitis(excluding JE and WNE)	1			2	8	7	137
	Cryptosporidiosis					1		3
	Creutzfeldt-Jakob disease	1				10	6	85
	Severe invasive streptococcal infections(TSLS)	3	2	3	3	62	11	346
	Acquired immunodeficiency syndrome (AIDS)	4	5	8	3	129	14	403
	Giardiasis		2			6	1	16
	Invasive <i>Haemophilus influenzae</i> disease		1			6	1	83
	Invasive meningococcal disease							4
	Invasive pneumococcal disease	3	2	2	3	70	11	590
	Varicella (limited to hospitalized case)	1	1	3	3	25	6	153
	Congenital rubella syndrome							
	Syphilis	66	72	76	47	1,474	167	5,012
	Disseminated cryptococcosis					7	3	69
	Tetanus	1				1		35
	Vancomycin-resistant <i>S. aureus</i> infection							
	Vancomycin-resistant <i>Enterococcus</i> infection	1				3	4	73
	Pertussis	3			2	20	11	253
Rubella							2	
Measles							1	
MDRA infection	1				1		3	

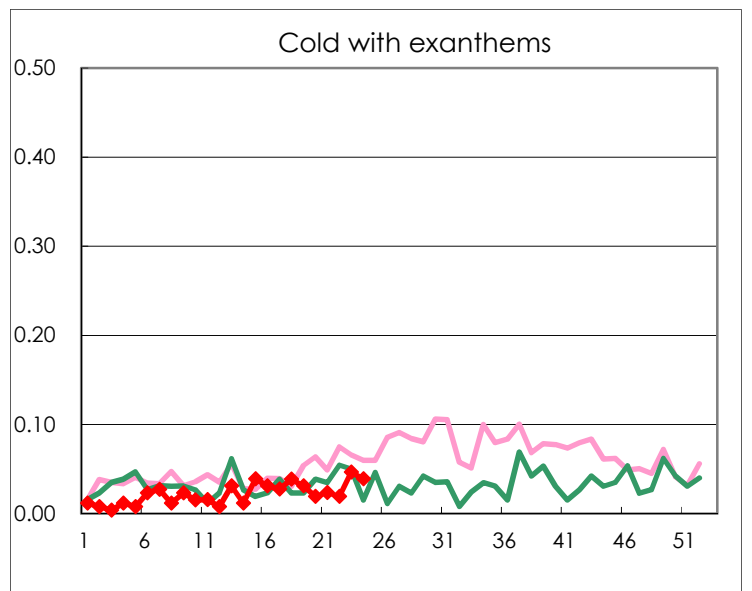
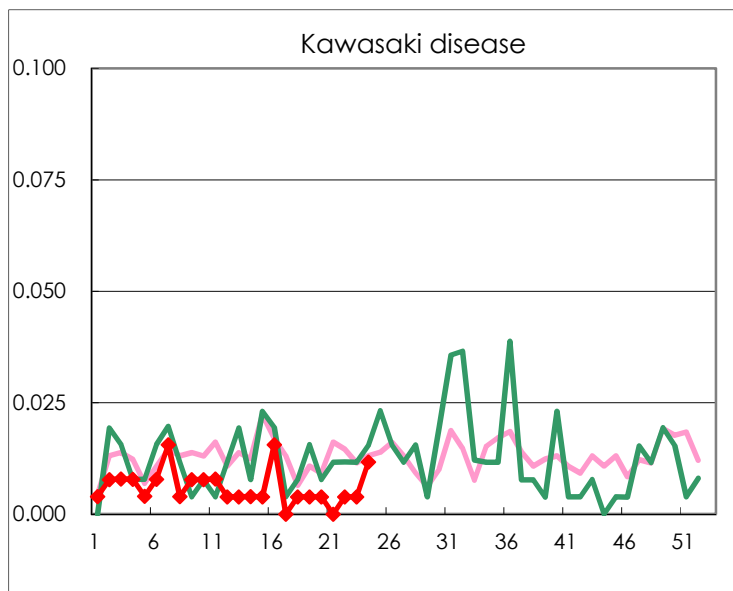
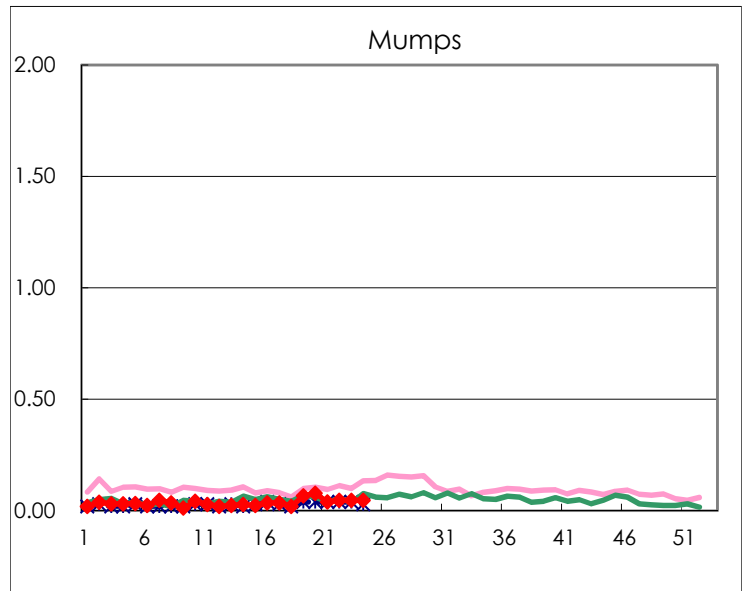
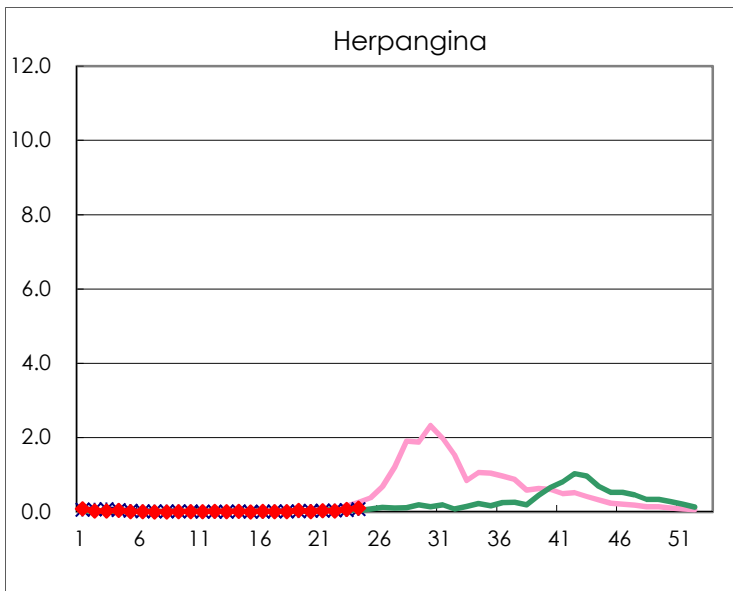
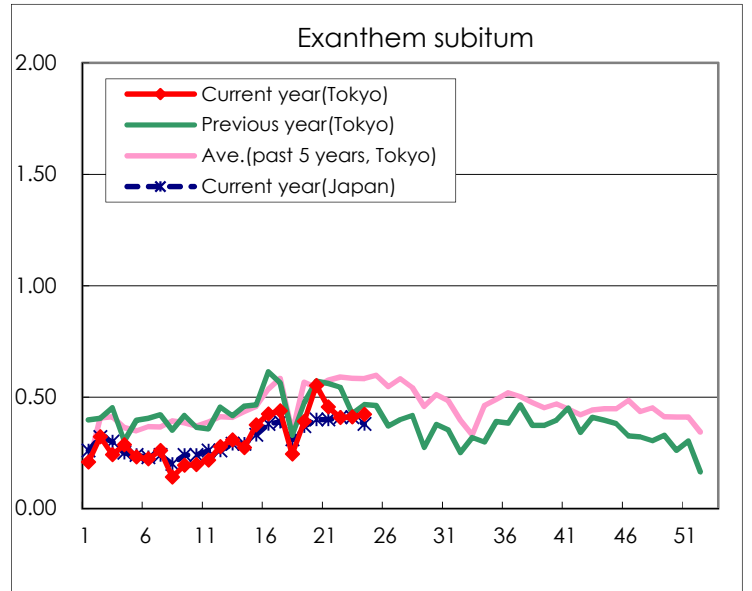
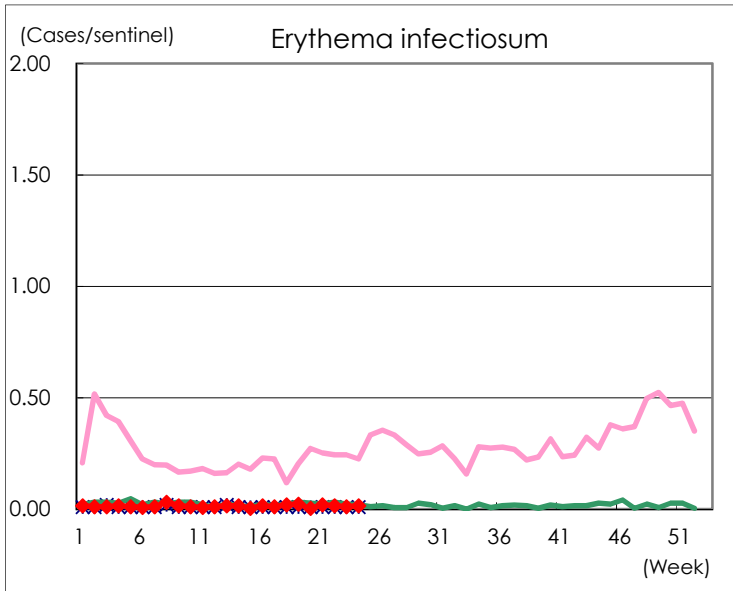
Number of patients with the diseases to be reported
by the designated clinics and hospitals

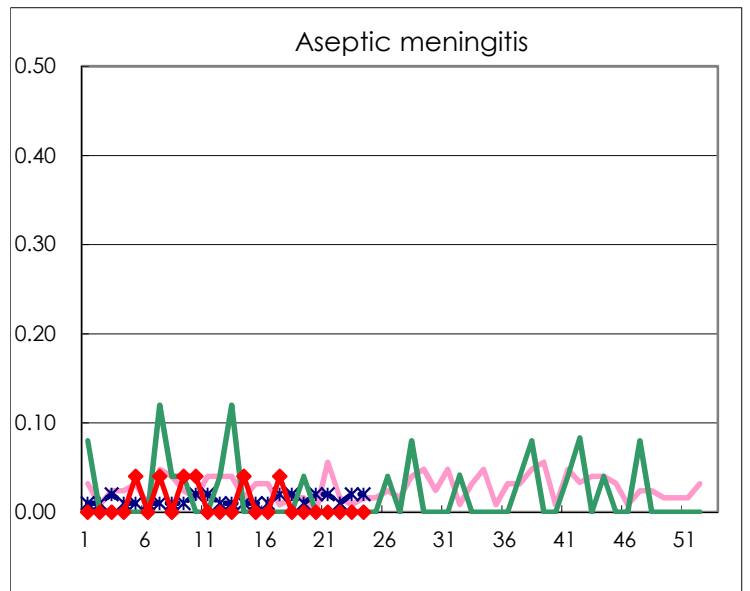
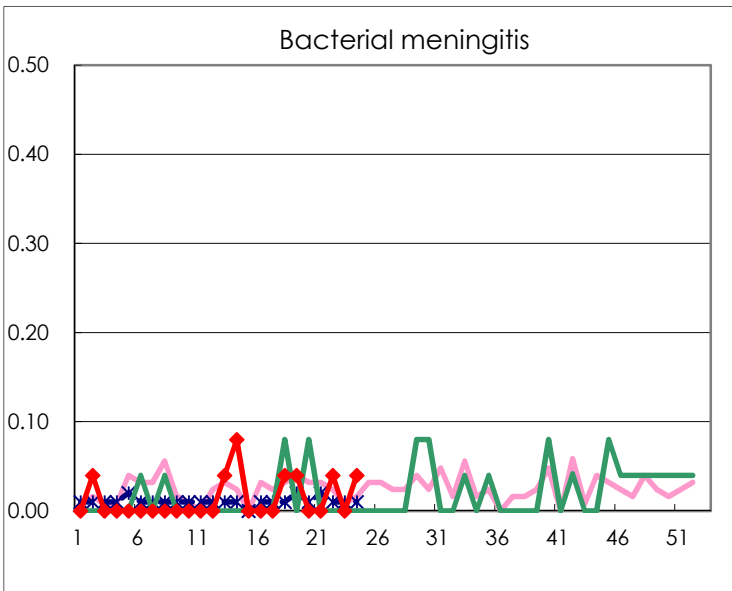
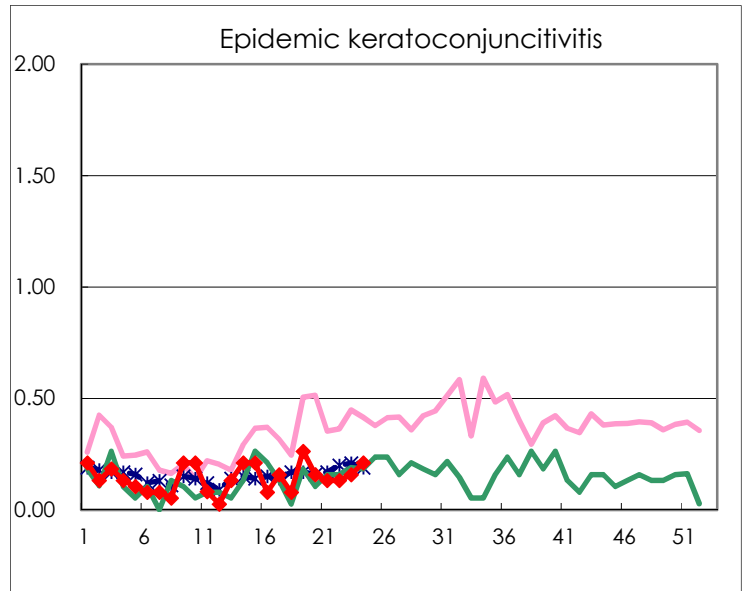
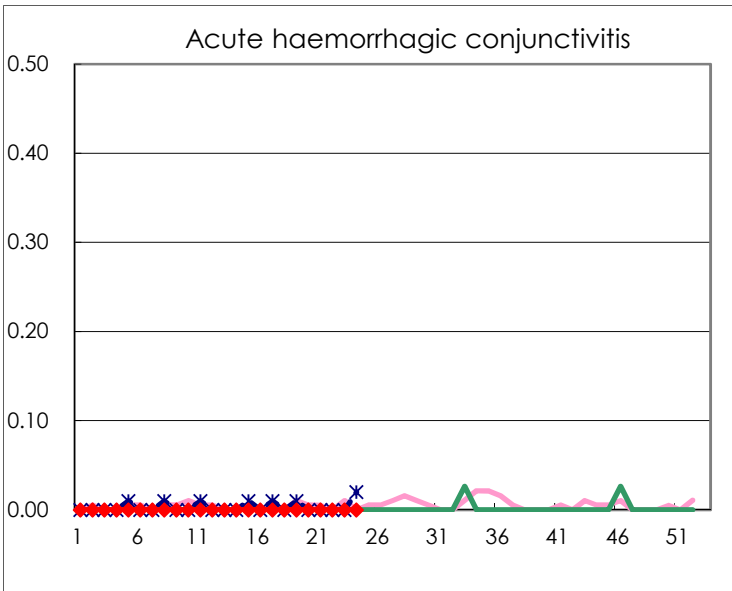
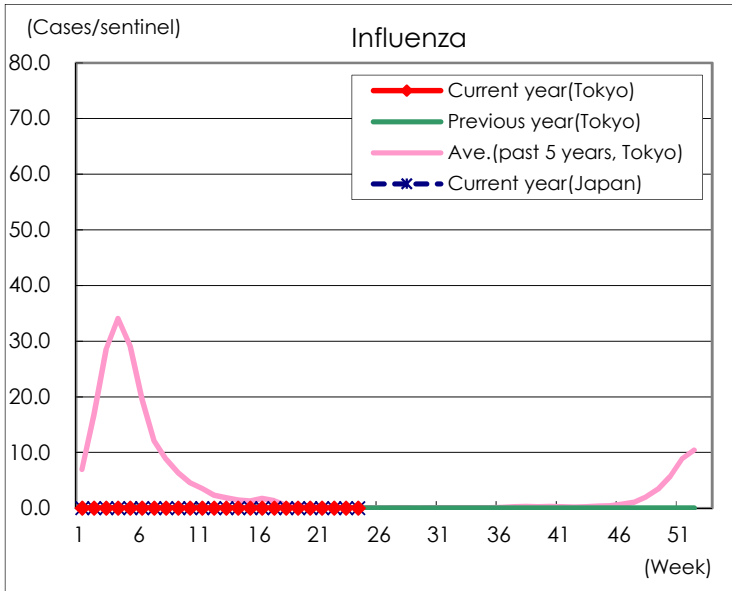
Diseases	Tokyo				
	21st	22nd	23rd	24th	/sentinel
Respiratory syncytial virus infection	24	25	45	69	0.27
Pharyngoconjunctival fever	42	74	100	84	0.33
Group A streptococcal pharyngitis	41	71	50	48	0.19
Infectious gastroenteritis	1,617	1,611	1,791	1,918	7.49
Chickenpox	21	16	18	16	0.06
Hand, foot, and mouth disease	50	51	66	94	0.37
Erythema infectiosum	5	4	3	4	0.02
Exanthem subitum	116	105	106	108	0.42
Herpangina	8	6	18	27	0.11
Mumps	10	12	12	12	0.05
Kawasaki disease		1	1	3	0.01
Cold with exanthems	6	5	12	10	0.04
Influenza			3		
Acute hemorrhagic conjunctivitis					
Epidemic keratoconjunctivitis	5	5	6	8	0.21
Bacterial meningitis		1		1	0.04
Aseptic meningitis					
<i>Mycoplasma pneumoniae</i>					
Chlamydial pneumonia (excluding psittacosis)		1			
Infectious gastroenteritis (only by Rotavirus)					
Influenza-Associated Hospitalizations					

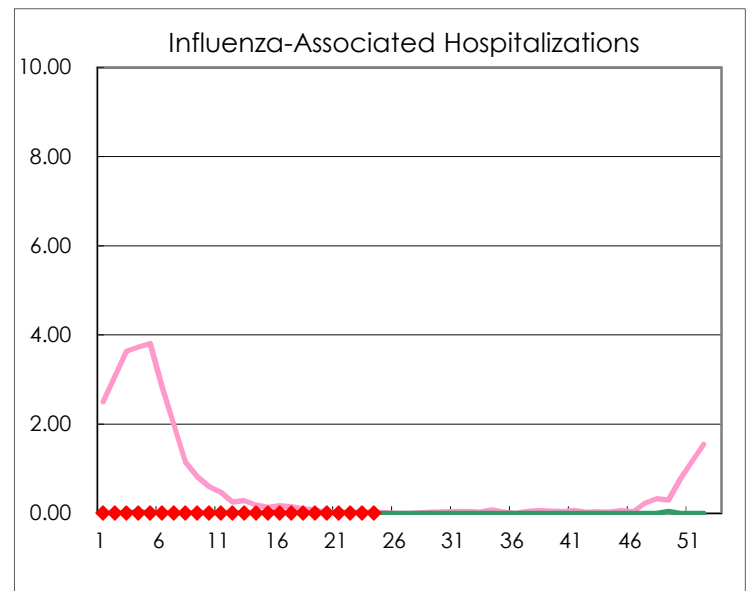
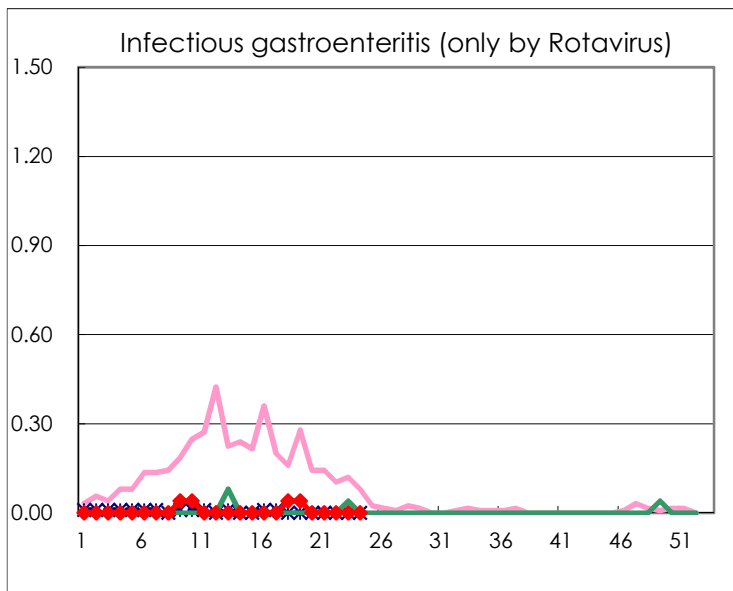
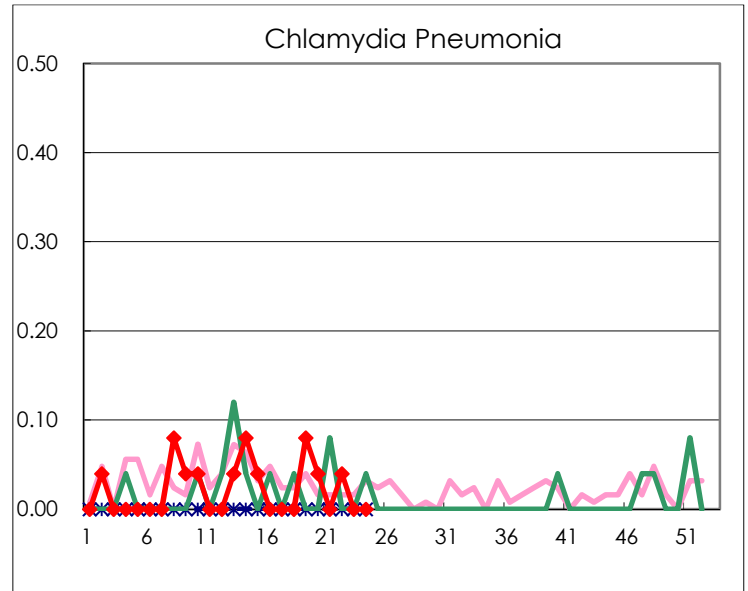
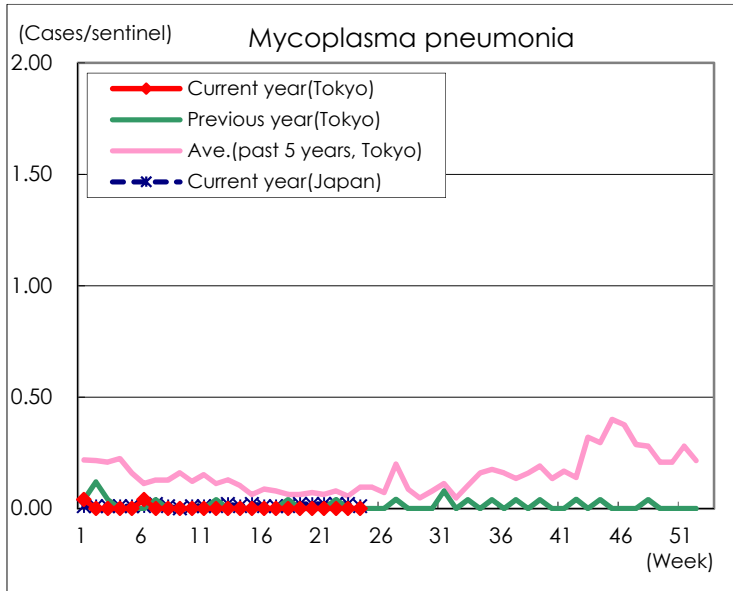
(Blank means 0.)

Disease Trend Graph (weekly reported cases per sentinel in comparison)









Number of sentinel facilities for weekly reporting		
Types of sentinels	Number of sentinels	Sentinels having reported
Pediatric	264	256
Influenza	419	409
Ophthalmic	39	38
Specially-designated	25	25