

---

INFECTIOUS DISEASES WEEKLY REPORT

# TOKYO IDWR

Tokyo Metropolitan Infectious Disease Surveillance Center

**30 June 2022 / Number 25**  
**( 6/20 ~ 6/26 )**

## Surveillance System in Tokyo, Japan

The infectious diseases which all physicians must report  
All physicians must report to health centers the incidence of the diseases which are shown at page one. Health centers electronically report the individual cases to Tokyo Metropolitan Infectious Disease Surveillance Center.

The infectious diseases required to be reported by the sentinels  
The numbers of patients who visit the sentinel clinics or hospitals during a week are reported to health centers in Tokyo. And they electronically report the numbers to Tokyo Metropolitan Infectious Disease Surveillance Center. We have about 500 sentinel clinics and hospitals in Tokyo.

Tokyo Metropolitan Institute of Public Health

TEL:81-3-3363-3213 FAX:81-3-5332-7365

e-mail:tmiph@section.metro.tokyo.jp

URL:idsc.tmiph.metro.tokyo.lg.jp/

---

Number of patients with the diseases which all physicians must report

Category	Diseases	Tokyo					Japan	
		22nd	23rd	24th	25th	Cum 2022	25th	Cum 2022
I	Ebola hemorrhagic fever							
	Crimean-Congo hemorrhagic fever							
	Smallpox							
	South American hemorrhagic fever							
	Plague							
	Marburg disease							
	Lassa fever							
II	Acute poliomyelitis							
	Tuberculosis	42	46	47	44	984	268	6,999
	Diphtheria							
	Severe Acute Respiratory Syndrome(SARS)							
	Middle East Respiratory Syndrome (MERS)							
	Avian influenza H5N1							
	Avian influenza H7N9							
III	Cholera							
	Shigellosis						1	13
	Enterohemorrhagic Escherichia coli infection	11	9	15	7	105	80	840
	Typhoid fever			1		2		8
	Paratyphoid fever					1	1	3
IV	Hepatitis E	2	3	2	2	71	8	223
	West Nile fever							
	Hepatitis A		1	1		3	2	44
	Echinococcosis					3	1	14
	Yellow fever							
	Psittacosis					1		4
	Omsk hemorrhagic fever							
	Relapsing fever							6
	Kyasanur forest disease							
	Q fever							
	Rabies							
	Coccidioidomycosis							
	Monkeypox							
	Zika virus infection							
	Severe Fever with Thrombocytopenia Syndrome						5	60
	Hemorrhagic fever with renal syndrome							
	Western equine encephalitis							
	Tick-borne encephalitis							
	Anthrax							
	Chikungunya fever						1	1
	Scrub typhus(Tsutsugamushi disease)		1			3	1	91
	Dengue fever					3	1	14
	Eastern equine encephalitis							
	Avian influenza (excluding H5N1 and H7N9)							
	Nipah virus infection							
	Japanese spotted fever						11	116
	Japanese encephalitis							1
	Hantavirus pulmonary syndrome							
	Herpes B virus infection							
	Glanders							
	Brucellosis							
	Venezuelan equine encephalitis							
	Hendra virus infection							
	Epidemic typhus							
Botulism					1		1	
Malaria			1	1	2		9	
Tularemia								
Lyme disease						1	3	
Lyssavirus infection(excluding rabies)								
Rift valley fever								
Melioidosis							1	
Legionellosis	3	1	5		50	48	774	
Leptospirosis	1				1		3	
Rocky mountain spotted fever								

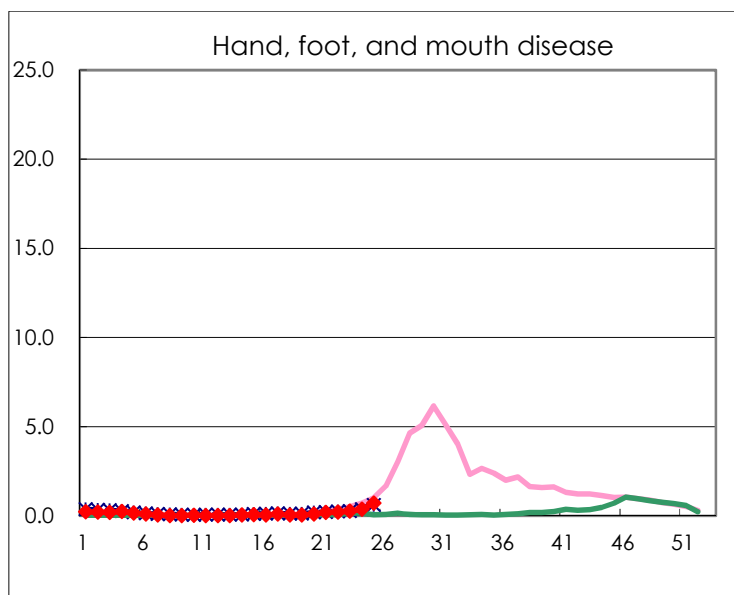
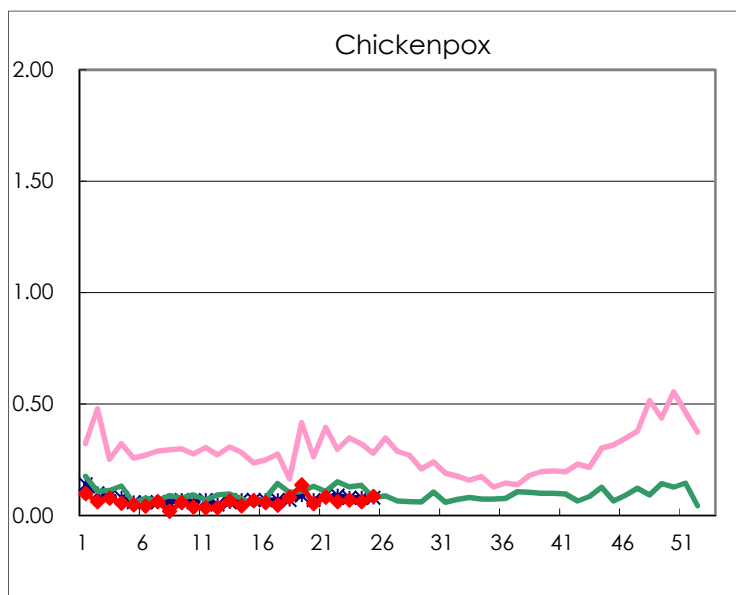
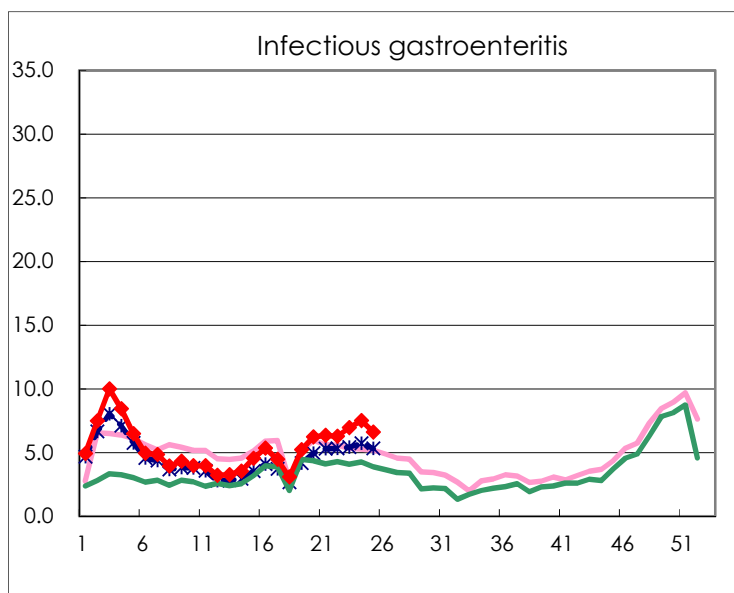
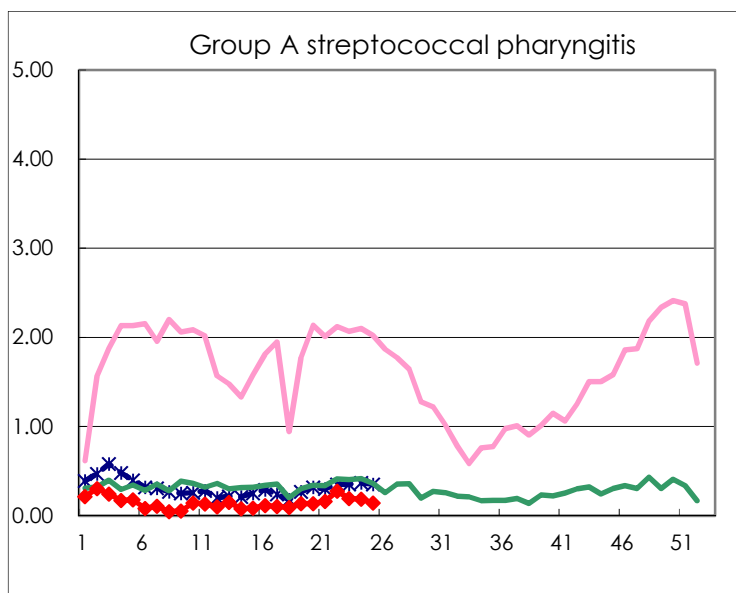
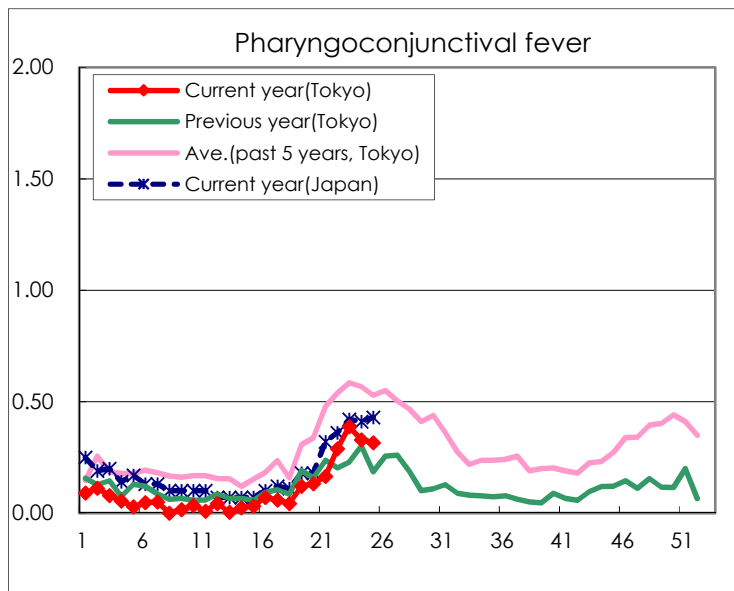
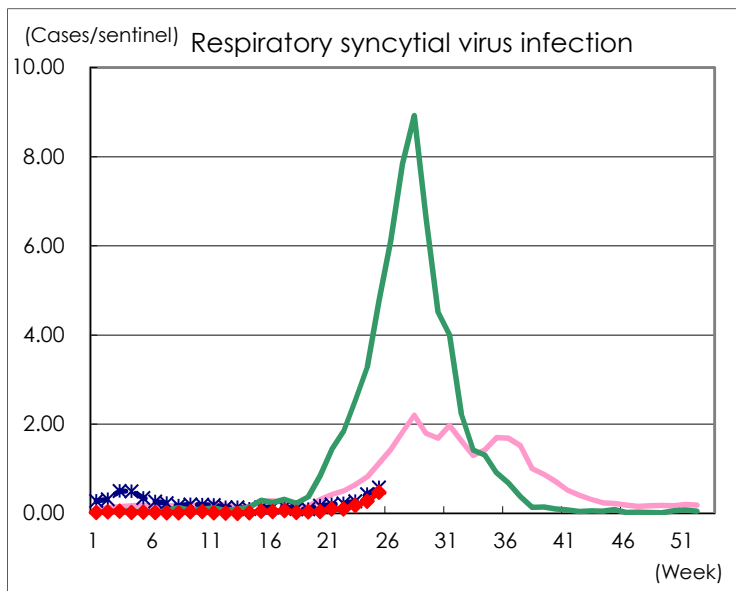
Category	Diseases	Tokyo					Japan	
		22nd	23rd	24th	25th	Cum 2022	25th	Cum 2022
V	Amebiasis	1		2	3	66	6	240
	Viral hepatitis(excluding hepatitis A and E)		3			20	3	103
	CRE infection	3	9	8	3	98	29	762
	Acute Flaccid Paralysis (excluding Acute poliomyelitis)							11
	Acute encephalitis(excluding JE and WNE)			2		8	5	142
	Cryptosporidiosis					1	2	5
	Creutzfeldt-Jakob disease					10	1	87
	Severe invasive streptococcal infections(TSLS)	2	3	3	2	64	9	357
	Acquired immunodeficiency syndrome (AIDS)	5	8	4	6	136	17	432
	Giardiasis	2				6		15
	Invasive <i>Haemophilus influenzae</i> disease	1			1	7	3	88
	Invasive meningococcal disease							4
	Invasive pneumococcal disease	2	2	3	2	72	18	620
	Varicella (limited to hospitalized case)	1	3	3	1	26	4	157
	Congenital rubella syndrome							
	Syphilis	72	76	77	38	1,542	136	5,283
	Disseminated cryptococcosis					7	1	70
	Tetanus				1	2		37
	Vancomycin-resistant <i>S. aureus</i> infection							
	Vancomycin-resistant <i>Enterococcus</i> infection					3		72
	Pertussis			2	1	21	8	263
Rubella				1	1	1	3	
Measles							1	
MDRA infection					1		3	

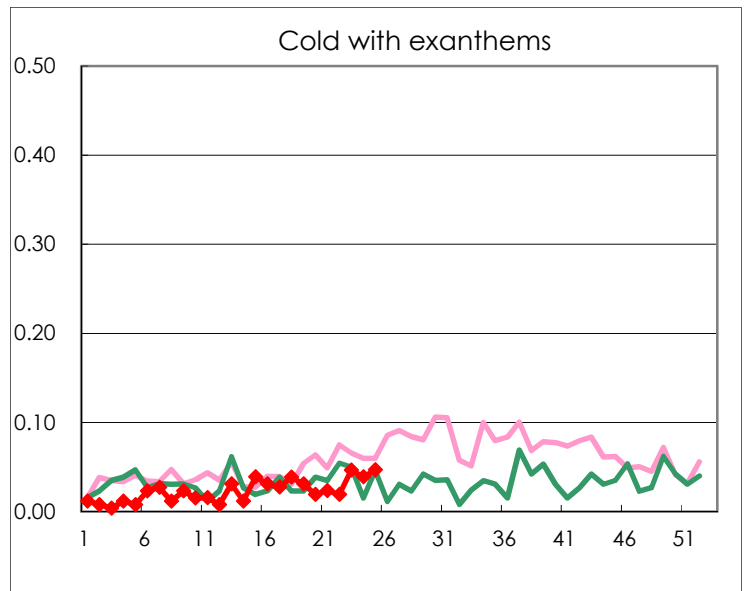
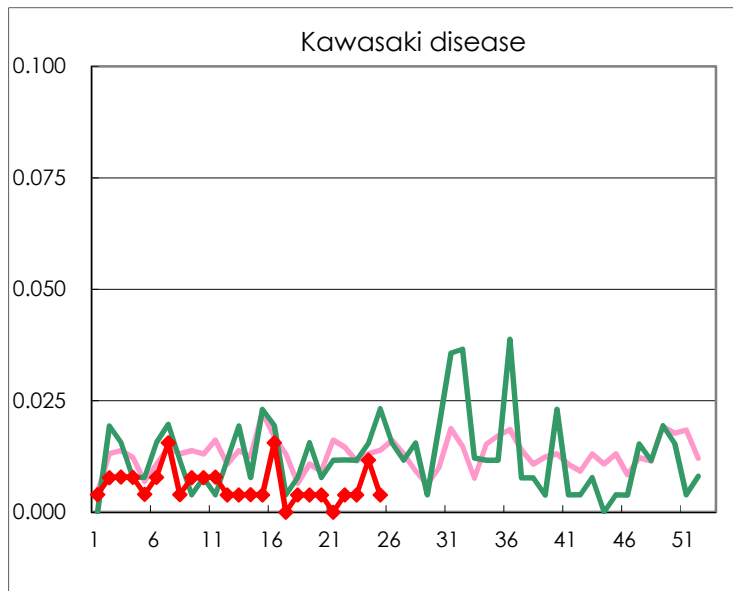
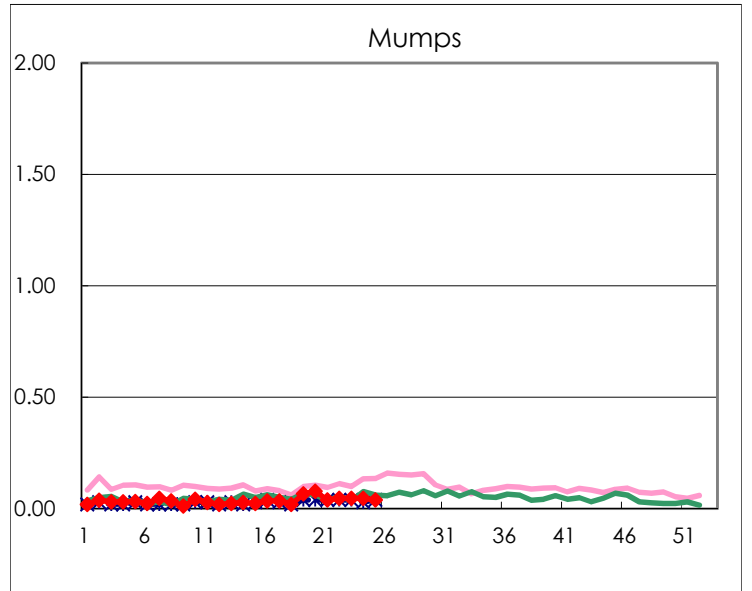
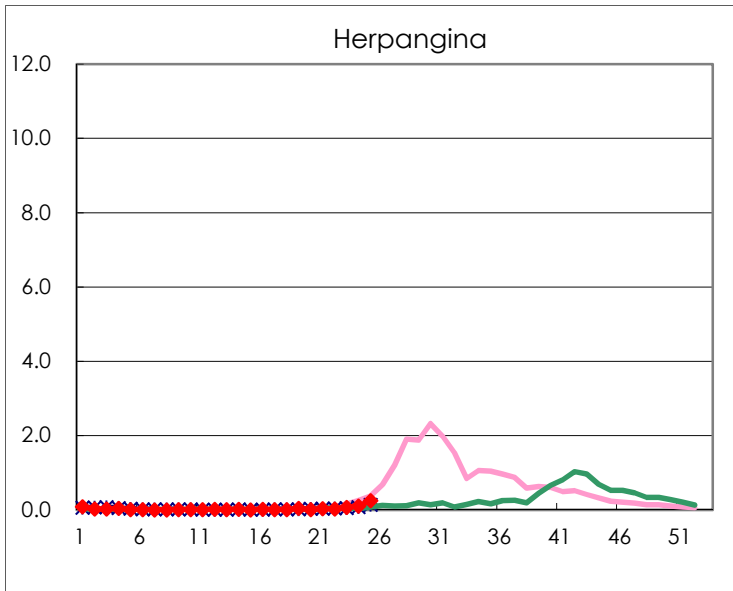
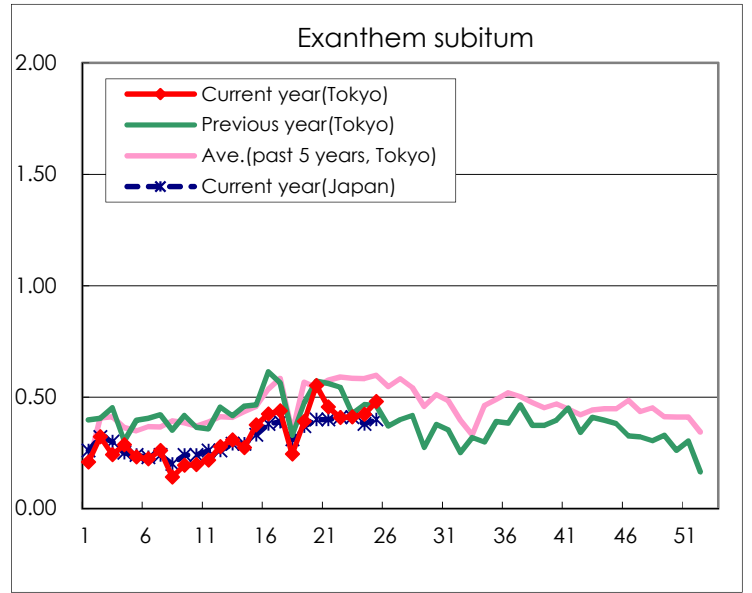
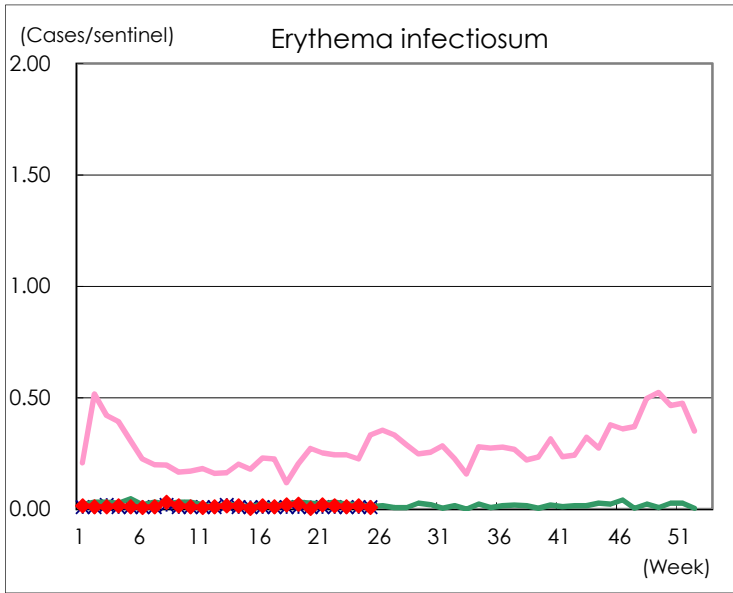
Number of patients with the diseases to be reported  
by the designated clinics and hospitals

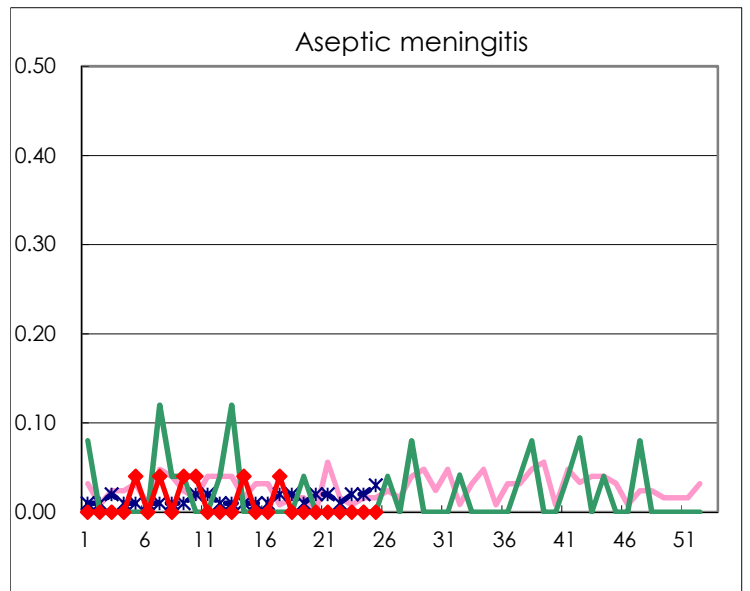
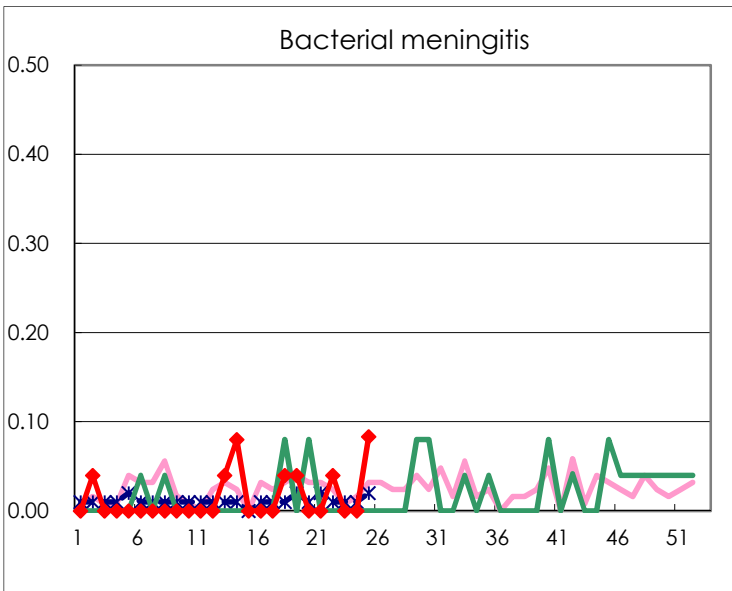
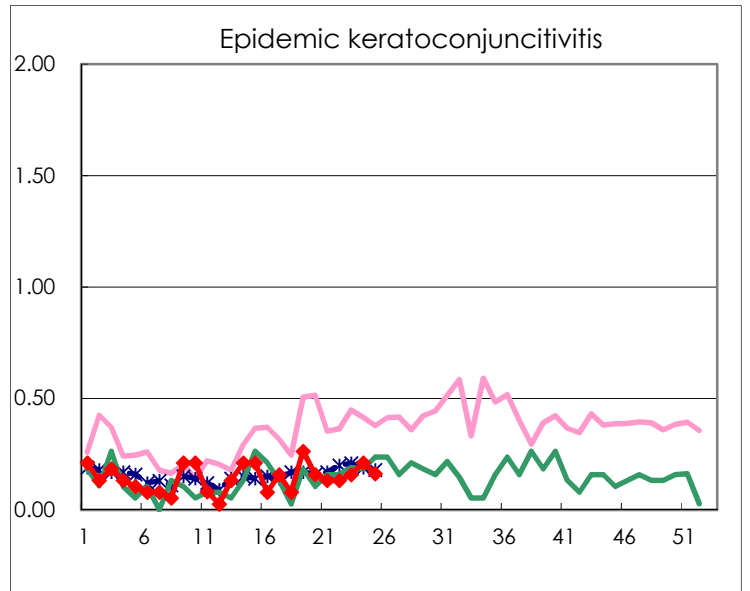
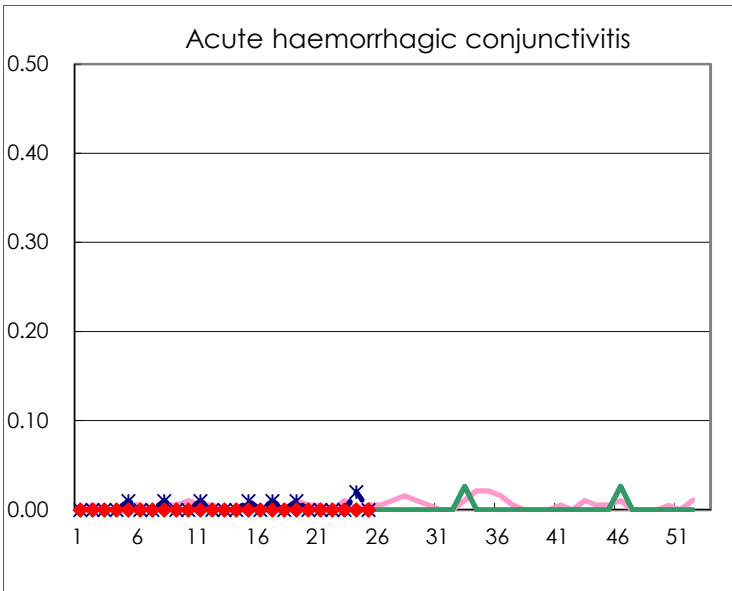
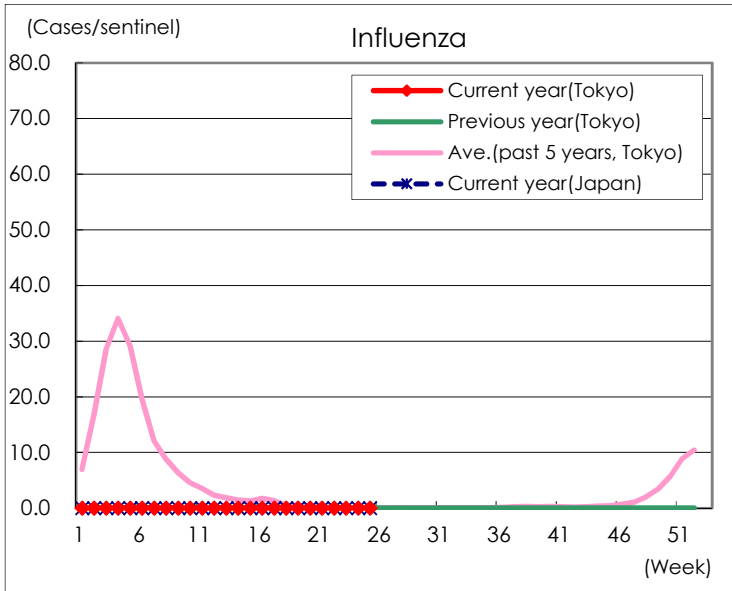
Diseases	Tokyo				
	22nd	23rd	24th	25th	/sentinel
Respiratory syncytial virus infection	25	45	69	121	0.47
Pharyngoconjunctival fever	74	100	84	81	0.32
Group A streptococcal pharyngitis	71	50	48	37	0.14
Infectious gastroenteritis	1,611	1,791	1,918	1,689	6.60
Chickenpox	16	18	16	22	0.09
Hand, foot, and mouth disease	51	66	94	183	0.71
Erythema infectiosum	4	3	4	2	0.01
Exanthem subitum	105	106	108	123	0.48
Herpangina	6	18	27	64	0.25
Mumps	12	12	12	10	0.04
Kawasaki disease	1	1	3	1	0.00
Cold with exanthems	5	12	10	12	0.05
Influenza		3			
Acute hemorrhagic conjunctivitis					
Epidemic keratoconjunctivitis	5	6	8	6	0.16
Bacterial meningitis	1			2	0.08
Aseptic meningitis					
<i>Mycoplasma pneumoniae</i>					
Chlamydial pneumonia (excluding psittacosis)	1				
Infectious gastroenteritis (only by Rotavirus)					
Influenza-Associated Hospitalizations					

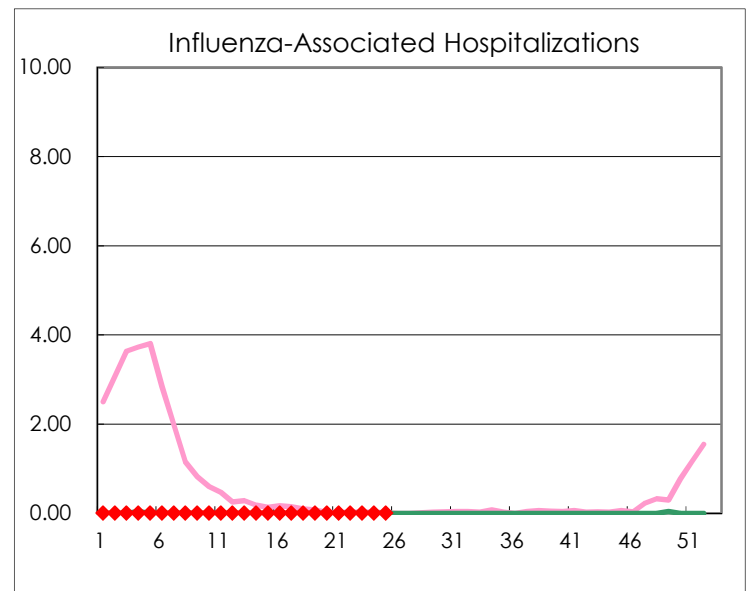
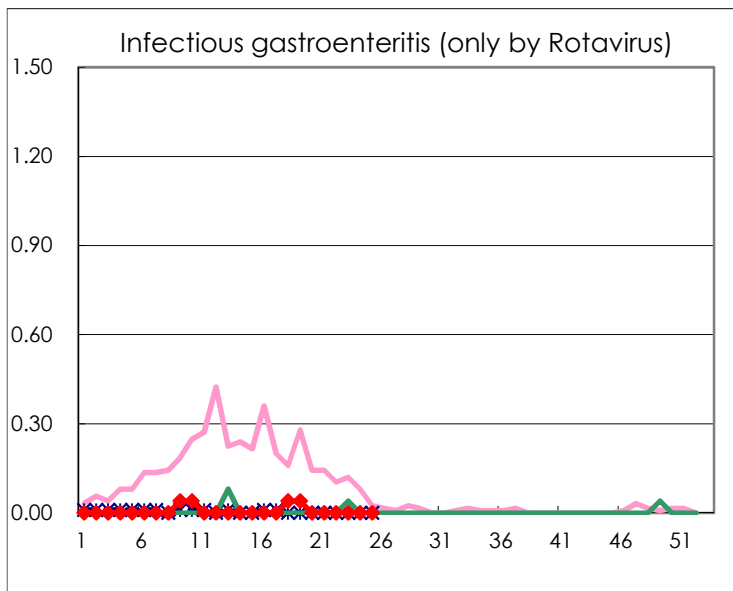
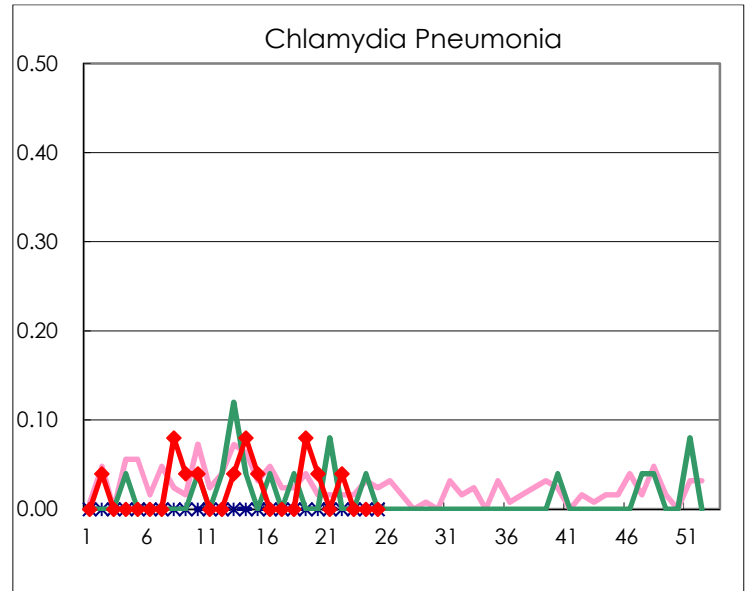
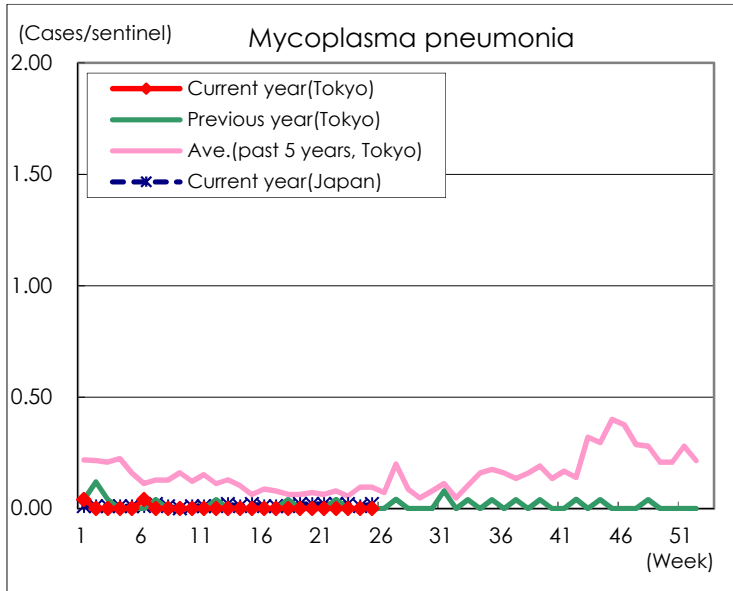
( Blank means 0. )

# Disease Trend Graph (weekly reported cases per sentinel in comparison)









Number of sentinel facilities for weekly reporting		
Types of sentinels	Number of sentinels	Sentinels having reported
Pediatric	264	256
Influenza	419	408
Ophthalmic	39	37
Specially-designated	25	24