

---

INFECTIOUS DISEASES WEEKLY REPORT

# TOKYO iDWR

Tokyo Metropolitan Infectious Disease Surveillance Center

**28 July 2022 / Number 29**  
**( 7/18 ~ 7/24 )**

## Surveillance System in Tokyo, Japan

The infectious diseases which all physicians must report  
All physicians must report to health centers the incidence of the diseases which are shown at page one. Health centers electronically report the individual cases to Tokyo Metropolitan Infectious Disease Surveillance Center.

The infectious diseases required to be reported by the sentinels  
The numbers of patients who visit the sentinel clinics or hospitals during a week are reported to health centers in Tokyo. And they electronically report the numbers to Tokyo Metropolitan Infectious Disease Surveillance Center. We have about 500 sentinel clinics and hospitals in Tokyo.

Tokyo Metropolitan Institute of Public Health

TEL:81-3-3363-3213 FAX:81-3-5332-7365

e-mail:tmiph@section.metro.tokyo.jp

URL:idsc.tmiph.metro.tokyo.lg.jp/

---

Number of patients with the diseases which all physicians must report

Category	Diseases	Tokyo					Japan	
		26th	27th	28th	29th	Cum 2022	29th	Cum 2022
I	Ebola hemorrhagic fever							
	Crimean-Congo hemorrhagic fever							
	Smallpox							
	South American hemorrhagic fever							
	Plague							
	Marburg disease							
	Lassa fever							
II	Acute poliomyelitis							
	Tuberculosis	31	37	38	29	1,128	179	8,096
	Diphtheria							
	Severe Acute Respiratory Syndrome(SARS)							
	Middle East Respiratory Syndrome (MERS)							
	Avian influenza H5N1							
	Avian influenza H7N9							
III	Cholera			1		1		1
	Shigellosis		1			1		13
	Enterohemorrhagic Escherichia coli infection	12	8	11	7	143	102	1,275
	Typhoid fever	1		1		4		10
	Paratyphoid fever					1		5
IV	Hepatitis E	3		3		77	7	245
	West Nile fever							
	Hepatitis A			1		4	1	46
	Echinococcosis					3	1	16
	Yellow fever							
	Psittacosis					1		5
	Omsk hemorrhagic fever							
	Relapsing fever							7
	Kyasanur forest disease							
	Q fever							
	Rabies							
	Coccidioidomycosis							
	Monkeypox							
	Zika virus infection							
	Severe Fever with Thrombocytopenia Syndrome						1	75
	Hemorrhagic fever with renal syndrome							
	Western equine encephalitis							
	Tick-borne encephalitis							
	Anthrax							
	Chikungunya fever	1				1		4
	Scrub typhus(Tsutsugamushi disease)					3		95
	Dengue fever		1			4	1	20
	Eastern equine encephalitis							
	Avian influenza (excluding H5N1 and H7N9)							
	Nipah virus infection							
	Japanese spotted fever						3	157
	Japanese encephalitis							1
	Hantavirus pulmonary syndrome							
	Herpes B virus infection							
	Glanders							
	Brucellosis							
	Venezuelan equine encephalitis							
	Hendra virus infection							
	Epidemic typhus							
Botulism					1		1	
Malaria				1	3	1	11	
Tularemia								
Lyme disease							3	
Lyssavirus infection(excluding rabies)								
Rift valley fever								
Melioidosis							1	
Legionellosis	1	1	2	2	56	31	998	
Leptospirosis					1		3	
Rocky mountain spotted fever								

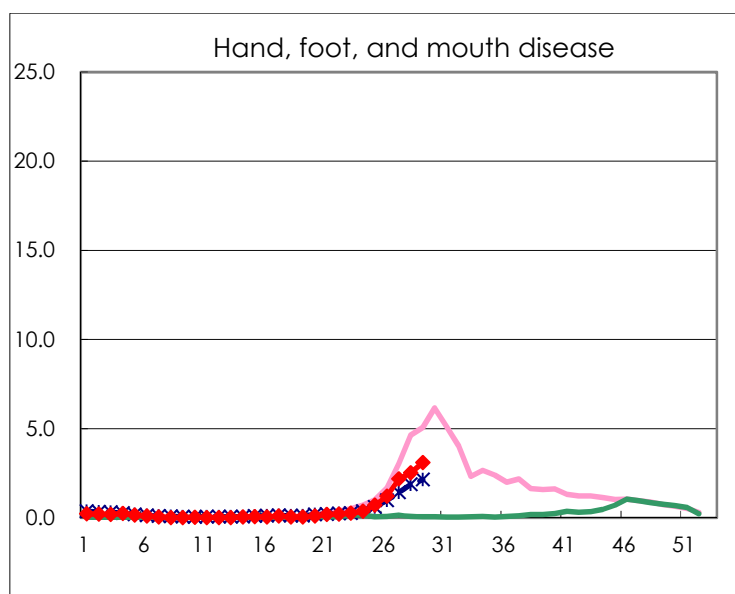
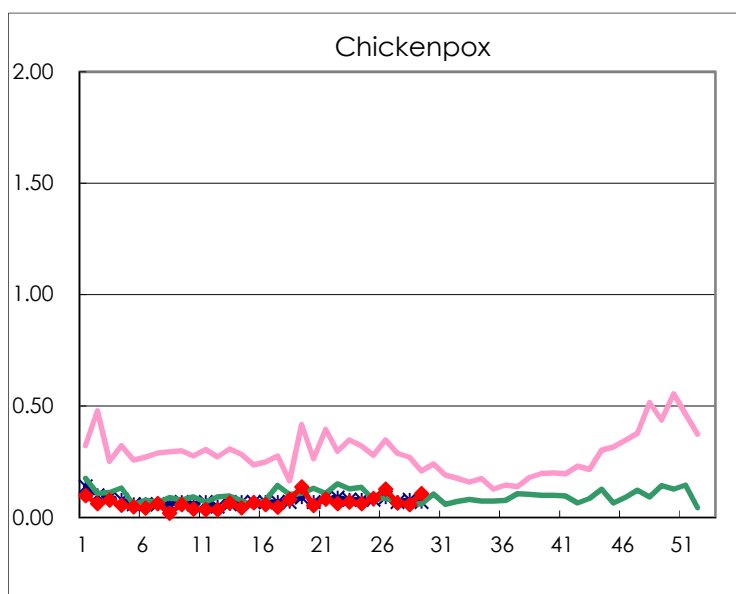
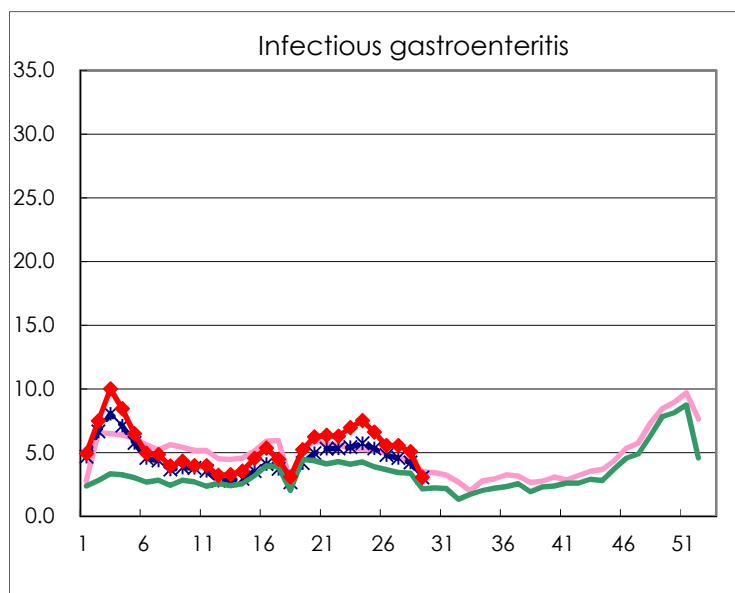
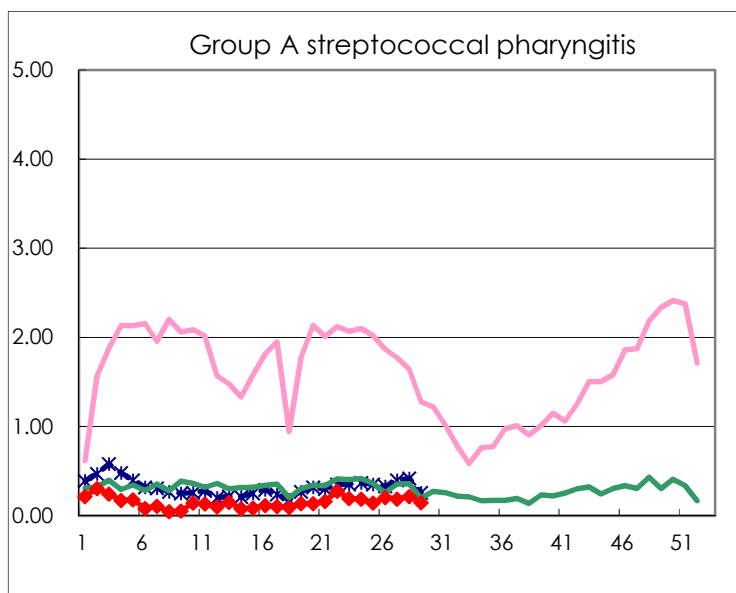
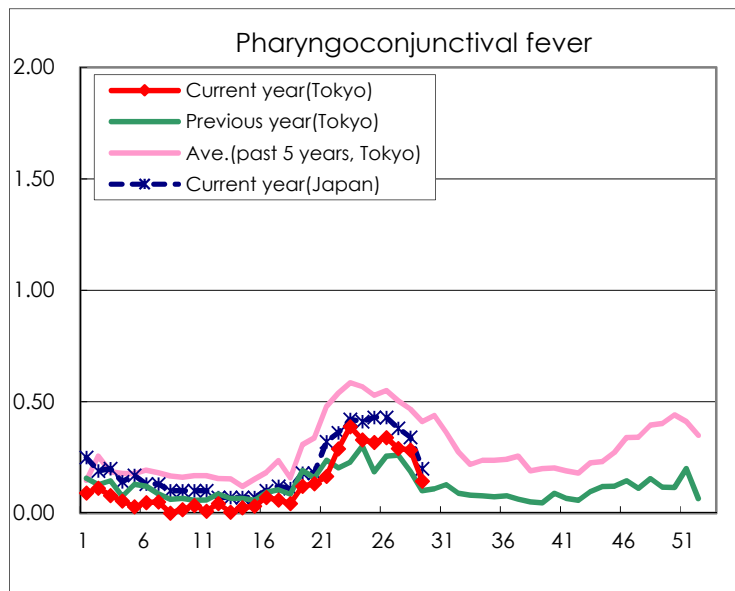
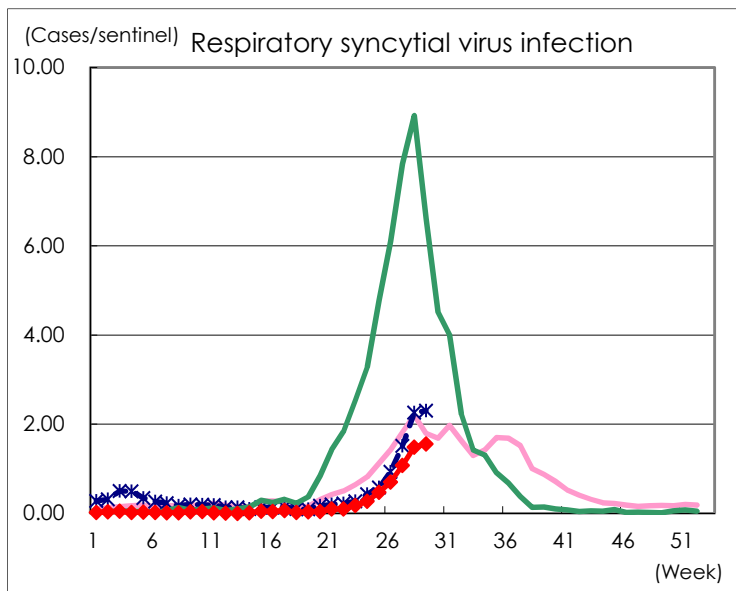
Category	Diseases	Tokyo					Japan	
		26th	27th	28th	29th	Cum 2022	29th	Cum 2022
V	Amebiasis	2	1	3	1	73	9	285
	Viral hepatitis(excluding hepatitis A and E)			1		21		115
	CRE infection	4	4	4	1	111	17	905
	Acute Flaccid Paralysis (excluding Acute poliomyelitis)						1	13
	Acute encephalitis(excluding JE and WNE)	1				9	5	164
	Cryptosporidiosis		1			2		6
	Creutzfeldt-Jakob disease	1				11	1	96
	Severe invasive streptococcal infections(TSLS)	1	3	1		69	10	415
	Acquired immunodeficiency syndrome (AIDS)	3	7	8	7	163	5	495
	Giardiasis	4				10		20
	Invasive <i>Haemophilus influenzae</i> disease			1	1	9	2	98
	Invasive meningococcal disease							4
	Invasive pneumococcal disease		3	4	2	81	6	693
	Varicella (limited to hospitalized case)		3		1	31	2	183
	Congenital rubella syndrome							
	Syphilis	85	86	68	74	1,901	147	6,385
	Disseminated cryptococcosis		1			8	1	82
	Tetanus					2		48
	Vancomycin-resistant <i>S. aureus</i> infection							
	Vancomycin-resistant <i>Enterococcus</i> infection				1	4	1	85
	Pertussis		1			22	1	284
Rubella					1		4	
Measles						1	2	
MDRA infection					1	1	5	

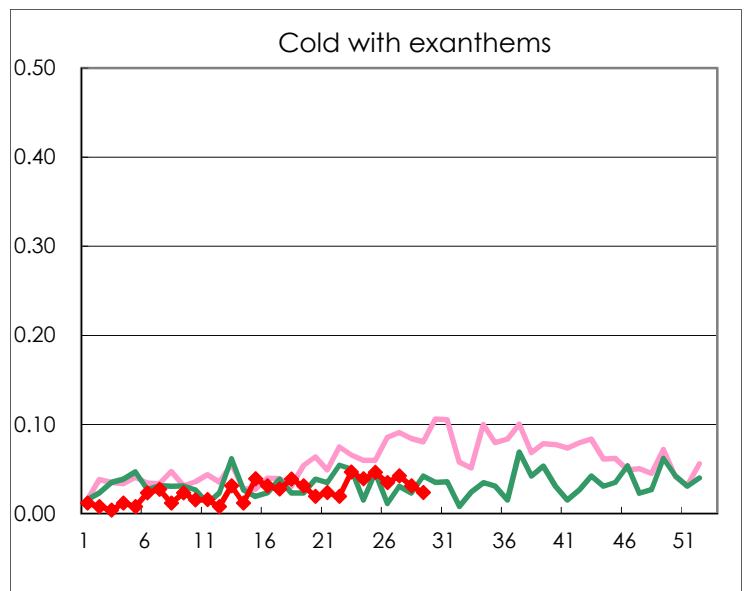
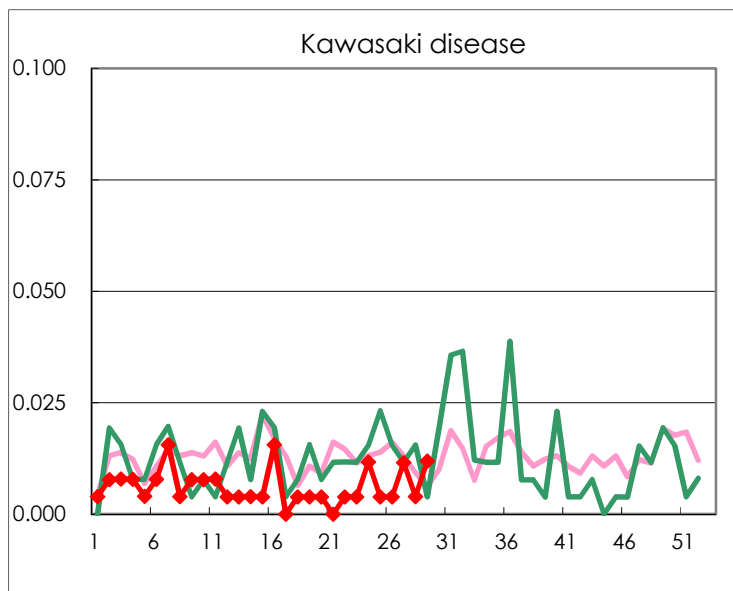
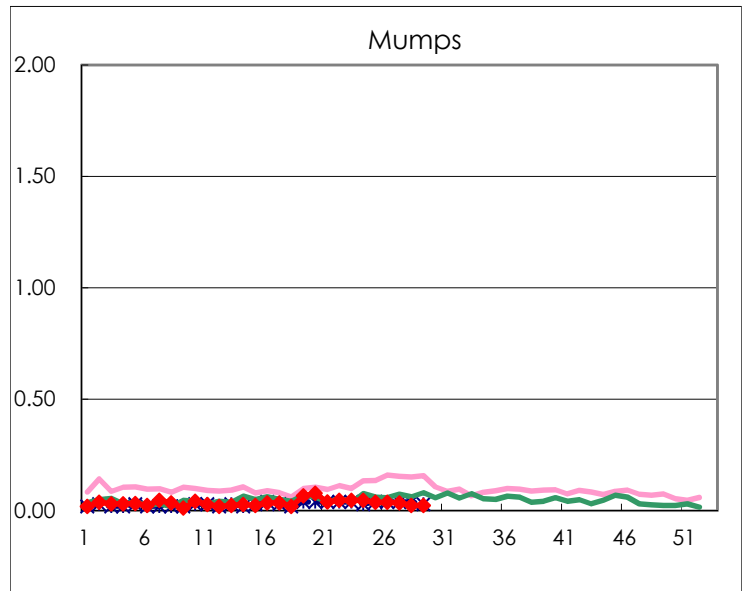
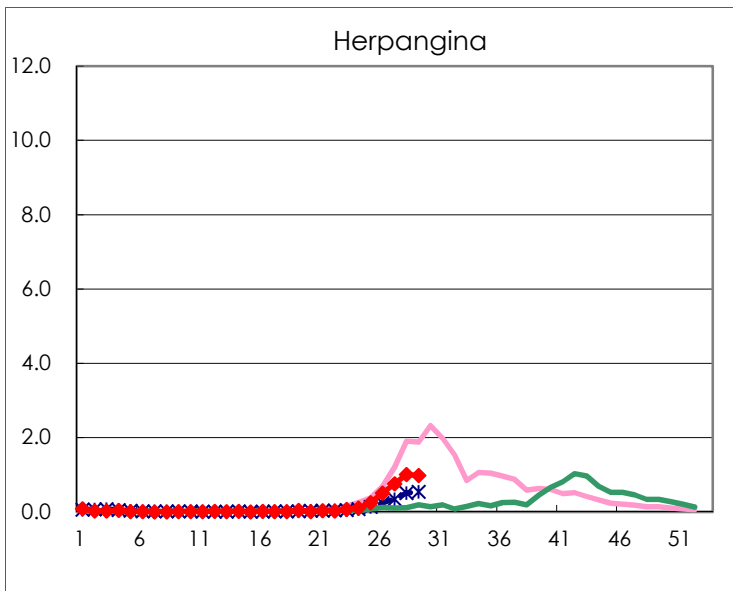
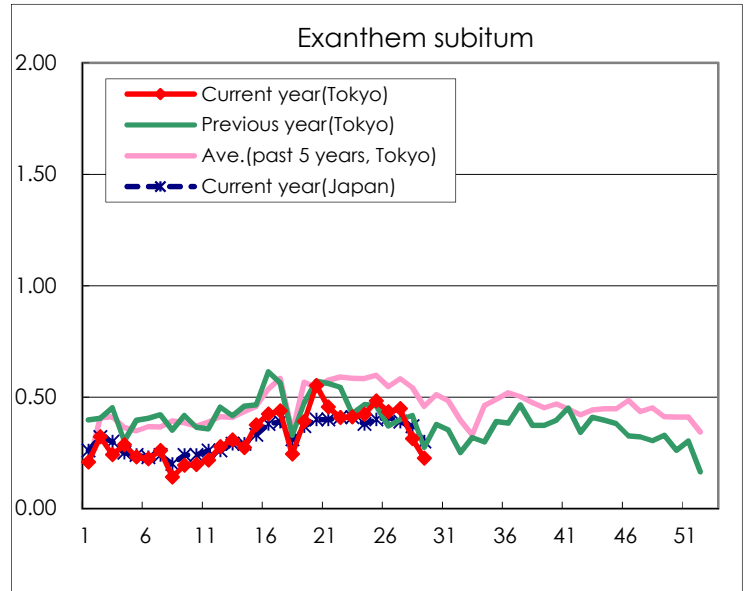
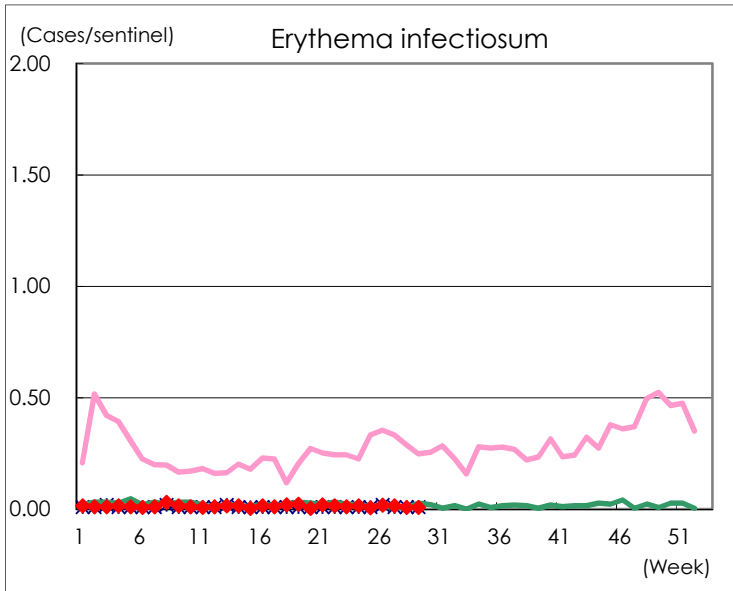
Number of patients with the diseases to be reported  
by the designated clinics and hospitals

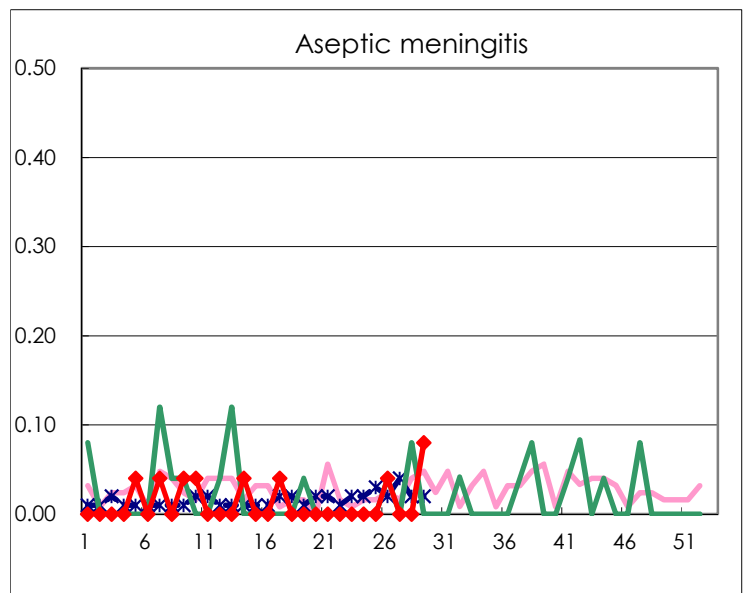
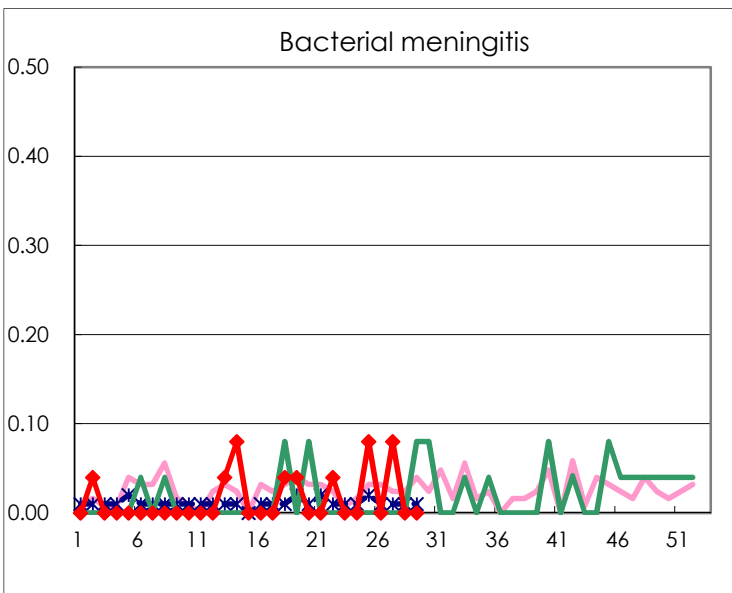
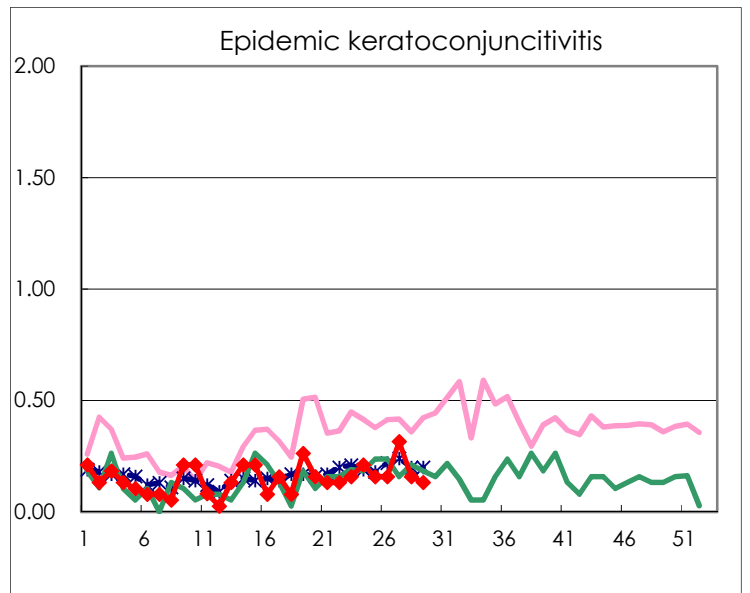
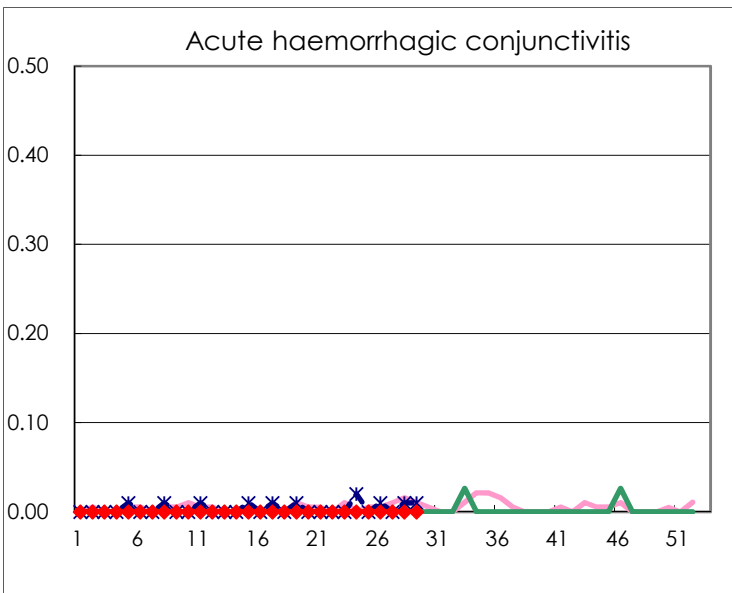
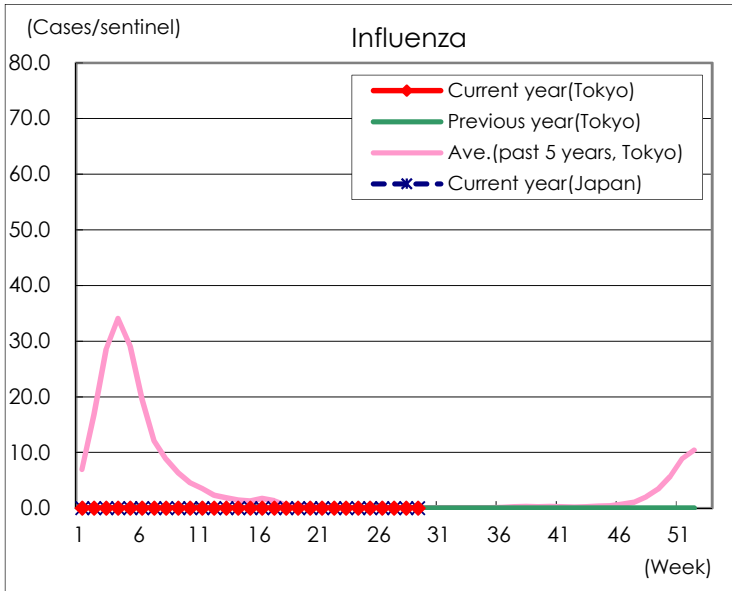
Diseases	Tokyo				
	26th	27th	28th	29th	/sentinel
Respiratory syncytial virus infection	182	278	379	392	1.56
Pharyngoconjunctival fever	88	75	72	36	0.14
Group A streptococcal pharyngitis	53	48	55	37	0.15
Infectious gastroenteritis	1,441	1,435	1,289	772	3.06
Chickenpox	33	17	15	27	0.11
Hand, foot, and mouth disease	315	567	641	781	3.10
Erythema infectiosum	5	4	2	2	0.01
Exanthem subitum	113	116	80	57	0.23
Herpangina	131	197	256	247	0.98
Mumps	10	9	6	6	0.02
Kawasaki disease	1	3	1	3	0.01
Cold with exanthems	9	11	8	6	0.02
Influenza			6	6	0.01
Acute hemorrhagic conjunctivitis					
Epidemic keratoconjunctivitis	6	12	6	5	0.13
Bacterial meningitis		2			
Aseptic meningitis	1			2	0.08
Mycoplasma pneumonia					
Chlamydial pneumonia (excluding psittacosis)					
Infectious gastroenteritis (only by Rotavirus)					
Influenza-Associated Hospitalizations				1	0.04

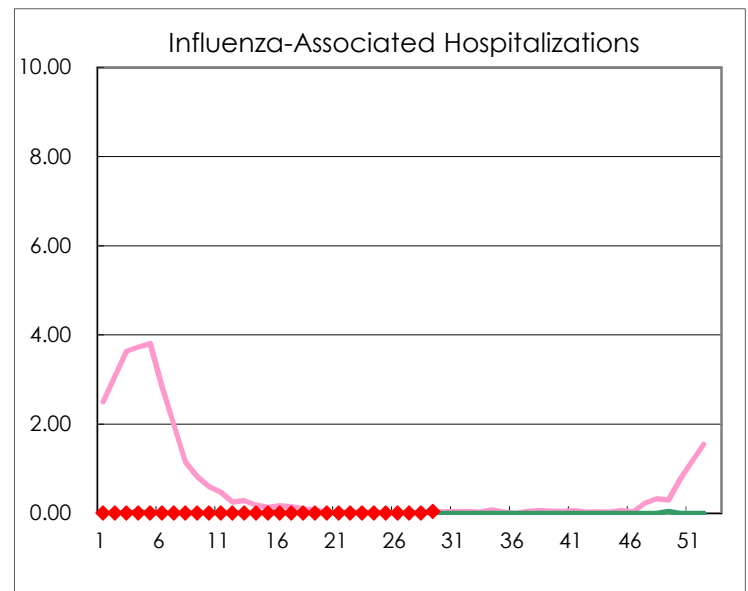
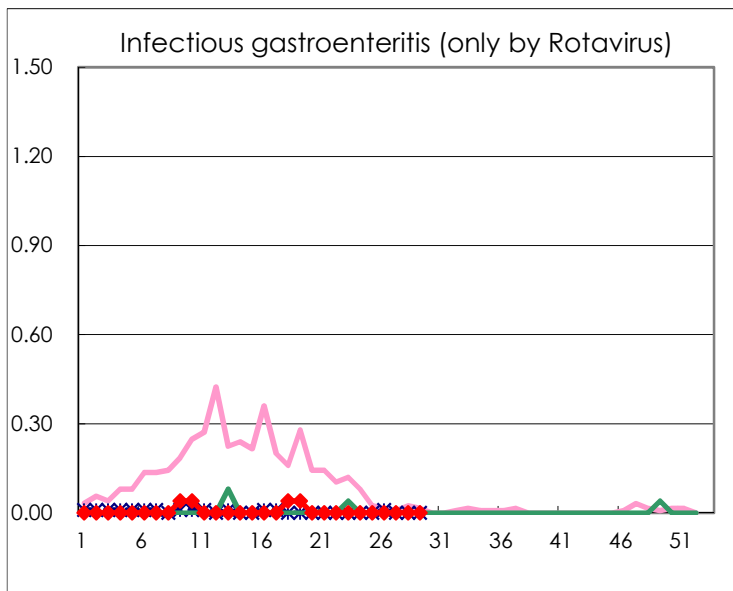
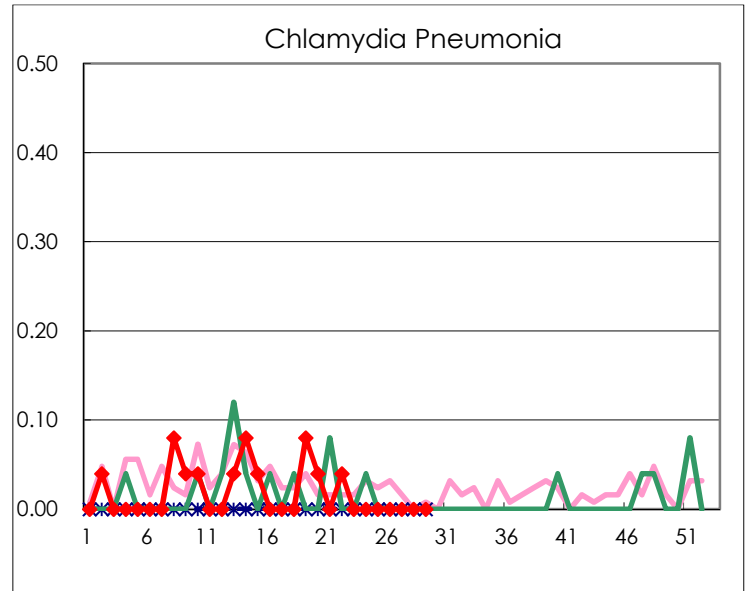
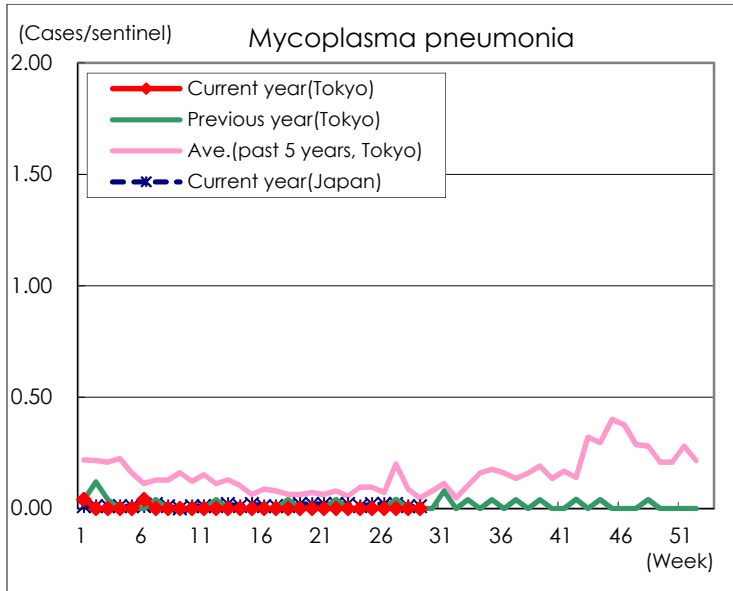
( Blank means 0. )

# Disease Trend Graph (weekly reported cases per sentinel in comparison)









Number of sentinel facilities for weekly reporting		
Types of sentinels	Number of sentinels	Sentinels having reported
Pediatric	264	252
Influenza	419	401
Ophthalmic	39	38
Specially-designated	25	25