
INFECTIOUS DISEASES WEEKLY REPORT

TOKYO iDWR

Tokyo Metropolitan Infectious Disease Surveillance Center

18 August 2022 / Number 32
(8/8 ~ 8/14)

Surveillance System in Tokyo, Japan

The infectious diseases which all physicians must report
All physicians must report to health centers the incidence of the diseases which are shown at page one. Health centers electronically report the individual cases to Tokyo Metropolitan Infectious Disease Surveillance Center.

The infectious diseases required to be reported by the sentinels
The numbers of patients who visit the sentinel clinics or hospitals during a week are reported to health centers in Tokyo. And they electronically report the numbers to Tokyo Metropolitan Infectious Disease Surveillance Center. We have about 500 sentinel clinics and hospitals in Tokyo.

Tokyo Metropolitan Institute of Public Health

TEL:81-3-3363-3213 FAX:81-3-5332-7365

e-mail:tmiph@section.metro.tokyo.jp

URL:idsctmiph.metro.tokyo.lg.jp/

Number of patients with the diseases which all physicians must report

Category	Diseases	Tokyo					Japan	
		29th	30th	31st	32nd	Cum 2022	32nd	Cum 2022
I	Ebola hemorrhagic fever							
	Crimean-Congo hemorrhagic fever							
	Smallpox							
	South American hemorrhagic fever							
	Plague							
	Marburg disease							
	Lassa fever							
II	Acute poliomyelitis							
	Tuberculosis	30	45	32	35	1,244	172	8,916
	Diphtheria							
	Severe Acute Respiratory Syndrome(SARS)							
	Middle East Respiratory Syndrome (MERS)							
	Avian influenza H5N1							
	Avian influenza H7N9							
III	Cholera					1		1
	Shigellosis					1		13
	Enterohemorrhagic Escherichia coli infection	7	19	24	9	196	111	1,733
	Typhoid fever					4		10
	Paratyphoid fever					1		5
IV	Hepatitis E	1	4	2	1	85	4	272
	West Nile fever							
	Hepatitis A					4		55
	Echinococcosis					3		16
	Yellow fever							
	Psittacosis					1		6
	Omsk hemorrhagic fever							
	Relapsing fever							11
	Kyasanur forest disease							
	Q fever							
	Rabies							
	Coccidioidomycosis							1
	Monkeypox		2			2	1	3
	Zika virus infection							
	Severe Fever with Thrombocytopenia Syndrome						1	82
	Hemorrhagic fever with renal syndrome							
	Western equine encephalitis							
	Tick-borne encephalitis							
	Anthrax							
	Chikungunya fever					1		4
	Scrub typhus(Tsutsugamushi disease)					3		97
	Dengue fever		1		1	6	5	34
	Eastern equine encephalitis							
	Avian influenza (excluding H5N1 and H7N9)							
	Nipah virus infection							
	Japanese spotted fever						5	185
	Japanese encephalitis							1
	Hantavirus pulmonary syndrome							
	Herpes B virus infection							
	Glanders							
	Brucellosis							
	Venezuelan equine encephalitis							
	Hendra virus infection							
Epidemic typhus								
Botulism					1		1	
Malaria	1			1	4	1	12	
Tularemia								
Lyme disease			2		2	1	9	
Lyssavirus infection(excluding rabies)								
Rift valley fever								
Melioidosis						1	2	
Legionellosis	2	3	3	4	66	44	1,195	
Leptospirosis					1		5	
Rocky mountain spotted fever								

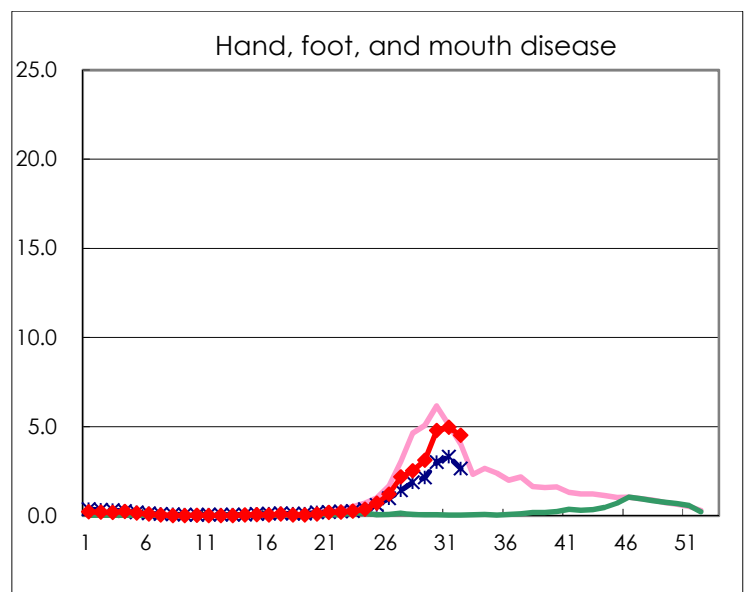
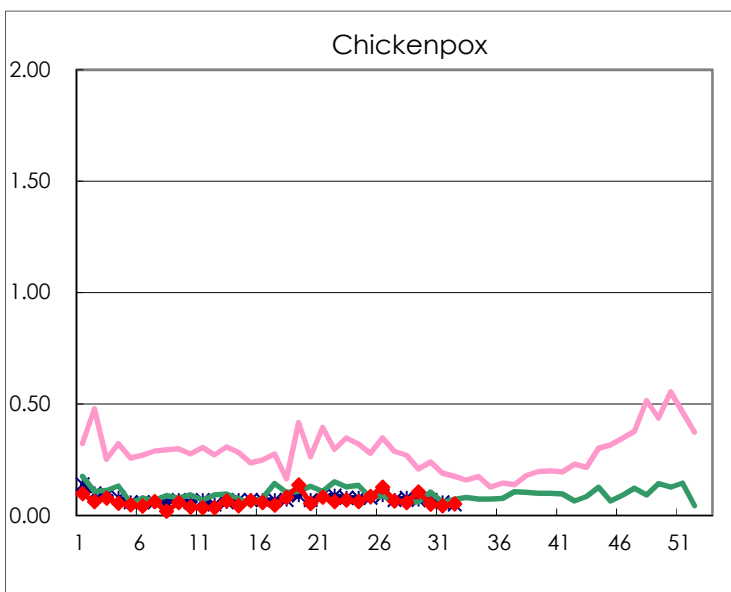
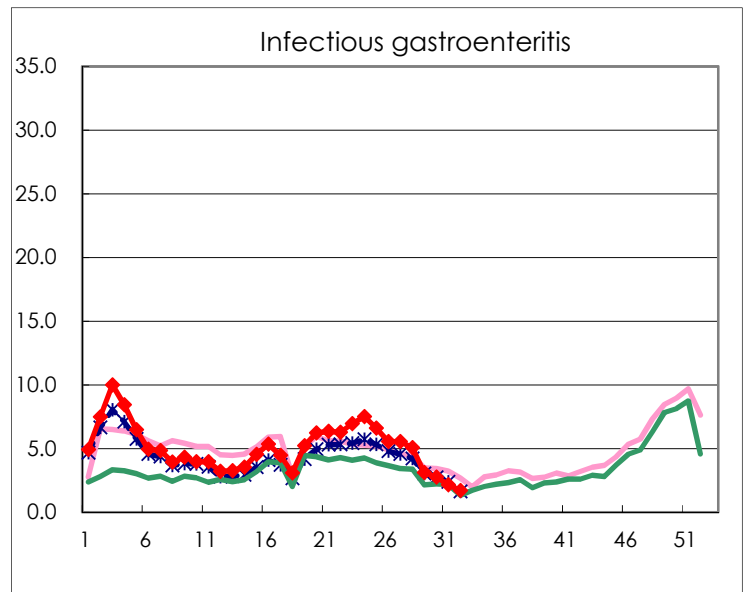
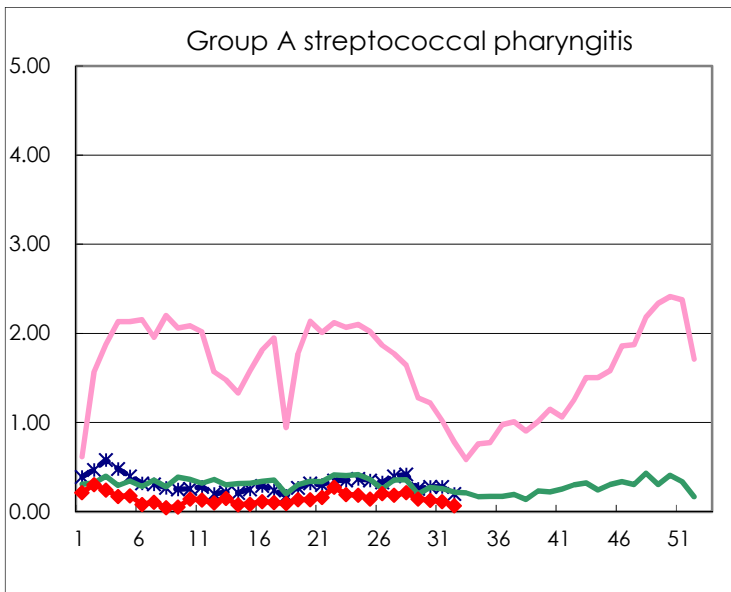
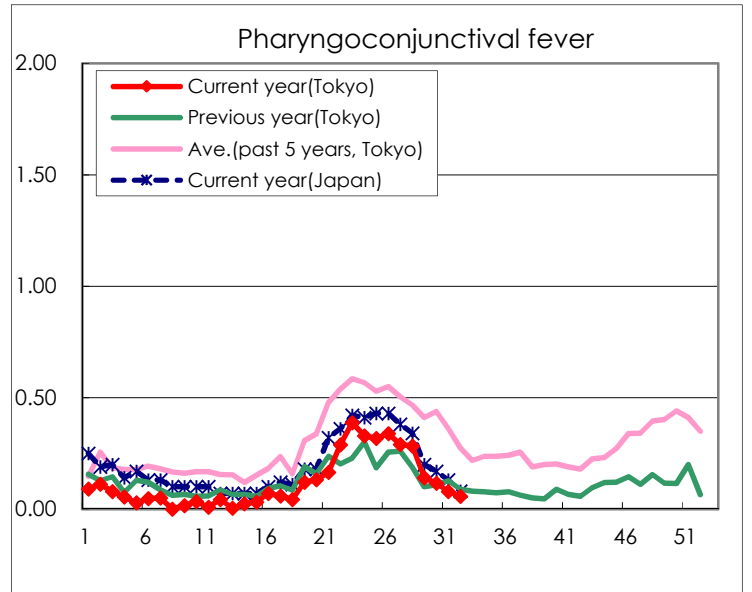
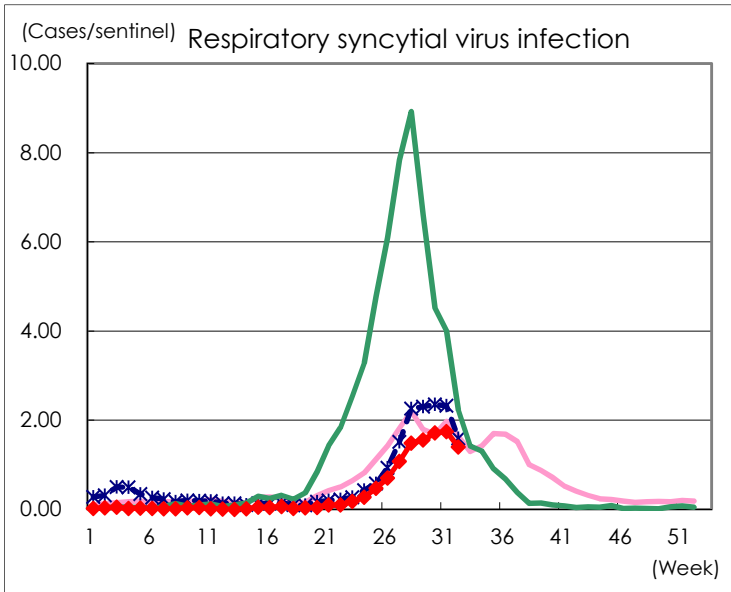
Category	Diseases	Tokyo					Japan	
		29th	30th	31st	32nd	Cum 2022	32nd	Cum 2022
V	Amebiasis	1	5	3		81	1	320
	Viral hepatitis(excluding hepatitis A and E)		1	2	1	25	3	129
	CRE infection	1	5	2	3	121	18	1,009
	Acute Flaccid Paralysis (excluding Acute poliomyelitis)							15
	Acute encephalitis(excluding JE and WNE)		1	5	1	16	7	197
	Cryptosporidiosis					2		6
	Creutzfeldt-Jakob disease				1	12	1	106
	Severe invasive streptococcal infections(TSLS)			1		70	6	465
	Acquired immunodeficiency syndrome (AIDS)	7	1	8	3	176	4	534
	Giardiasis					10		23
	Invasive <i>Haemophilus influenzae</i> disease	1	1	1		11	2	109
	Invasive meningococcal disease							5
	Invasive pneumococcal disease	3	1	3	2	88	8	742
	Varicella (limited to hospitalized case)	1				31	2	201
	Congenital rubella syndrome							
	Syphilis	75	57	91	59	2,110	105	7,241
	Disseminated cryptococcosis			1		9		89
	Tetanus				1	3	2	55
	Vancomycin-resistant <i>S. aureus</i> infection							
	Vancomycin-resistant <i>Enterococcus</i> infection	1				4		95
	Pertussis			3	2	27	5	310
Rubella					1		6	
Measles						1	5	
MDRA infection		1			2		8	

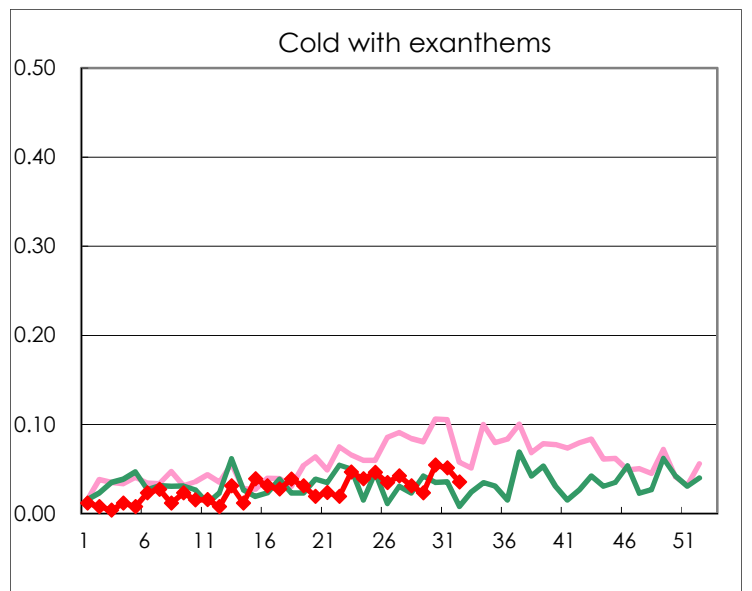
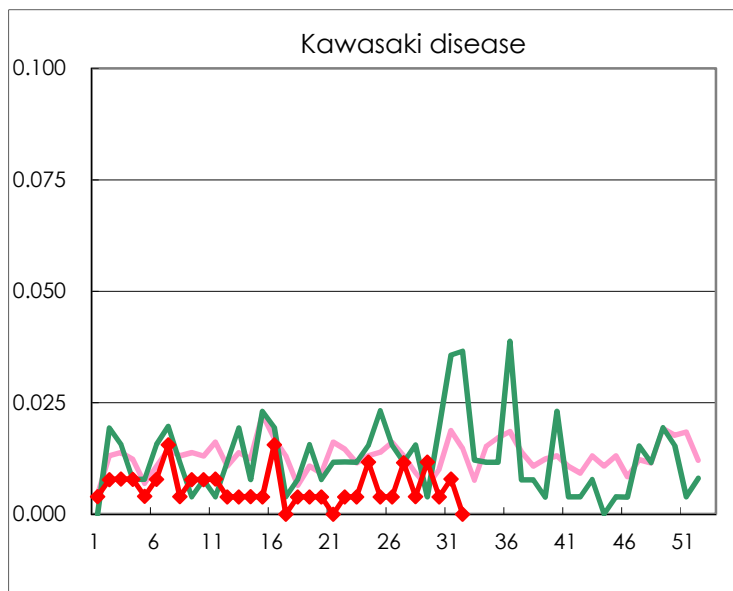
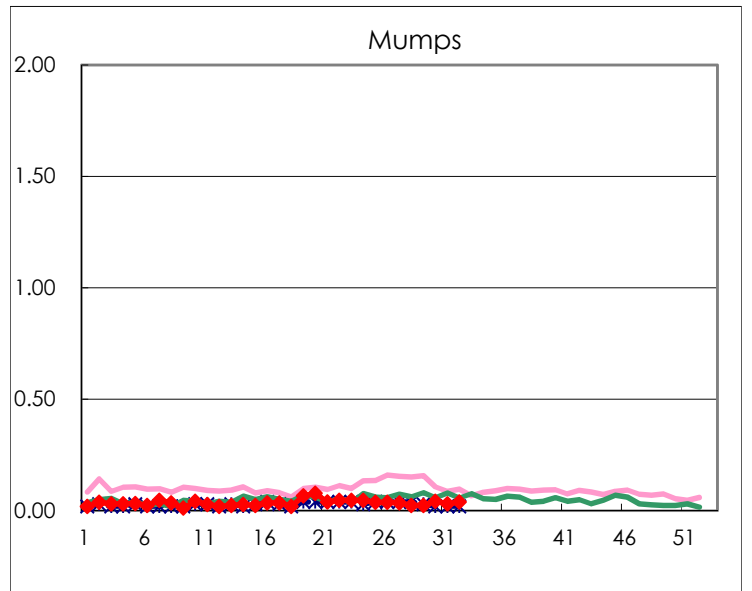
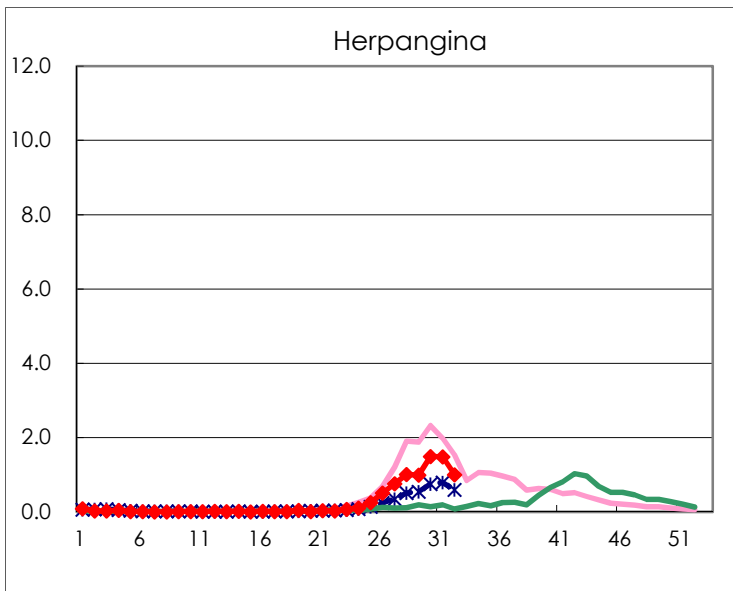
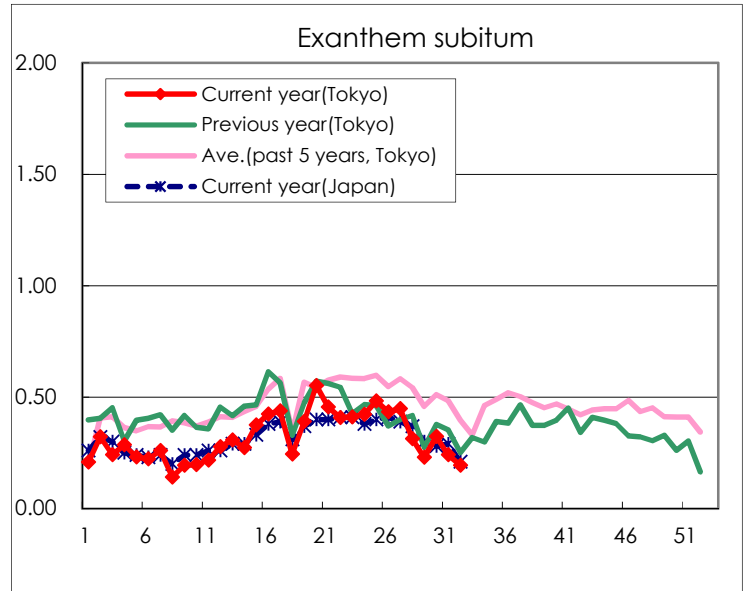
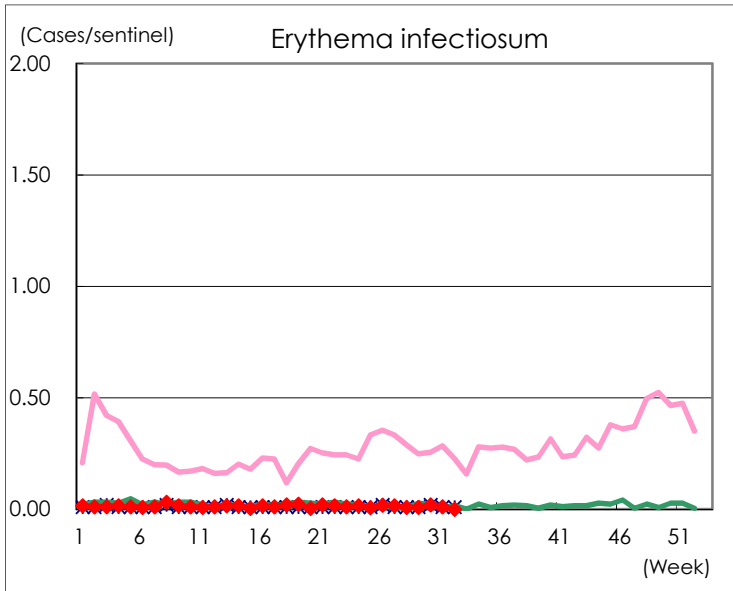
Number of patients with the diseases to be reported
by the designated clinics and hospitals

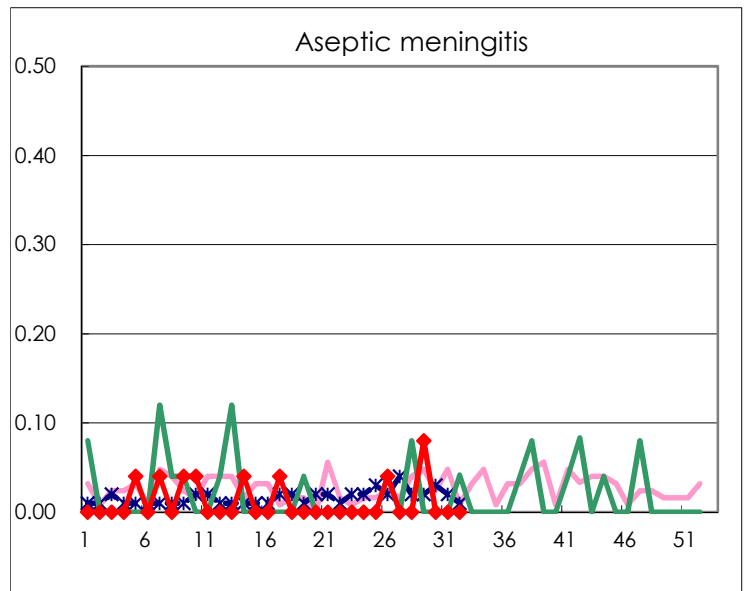
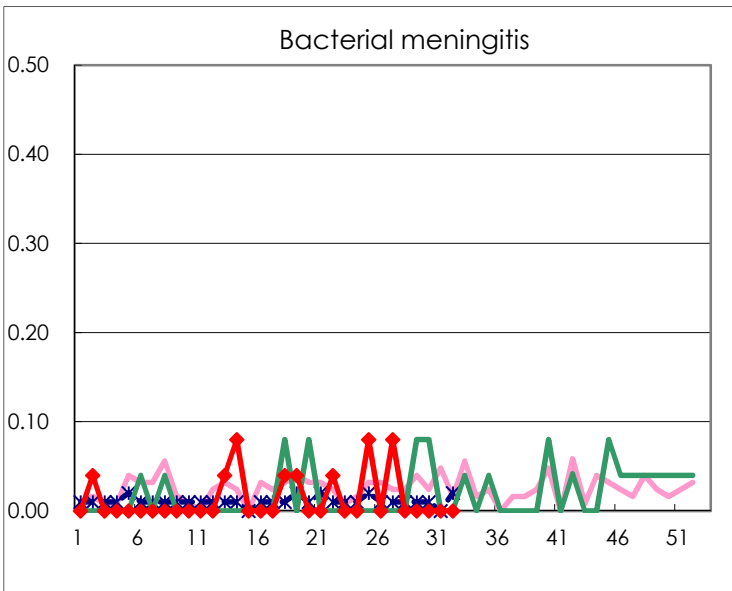
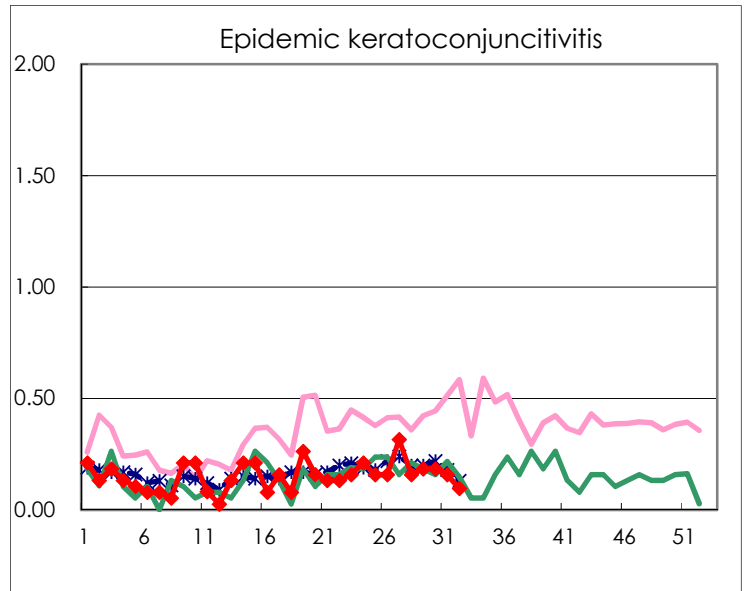
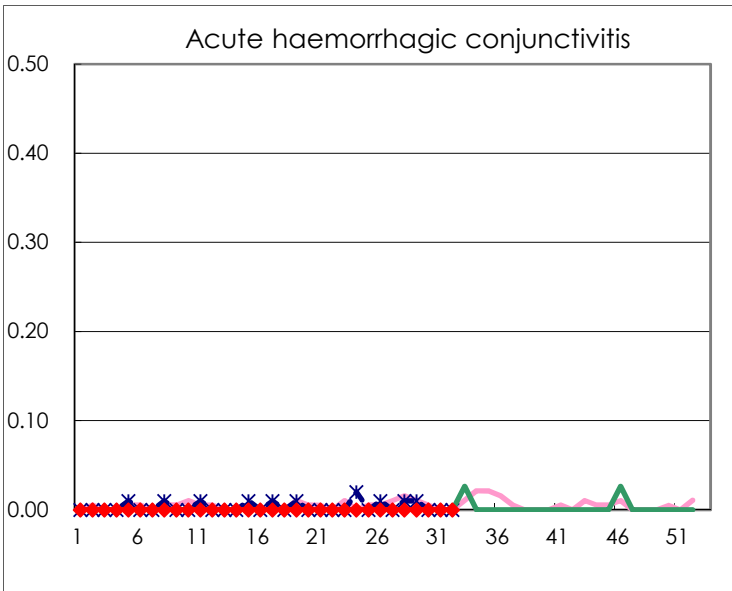
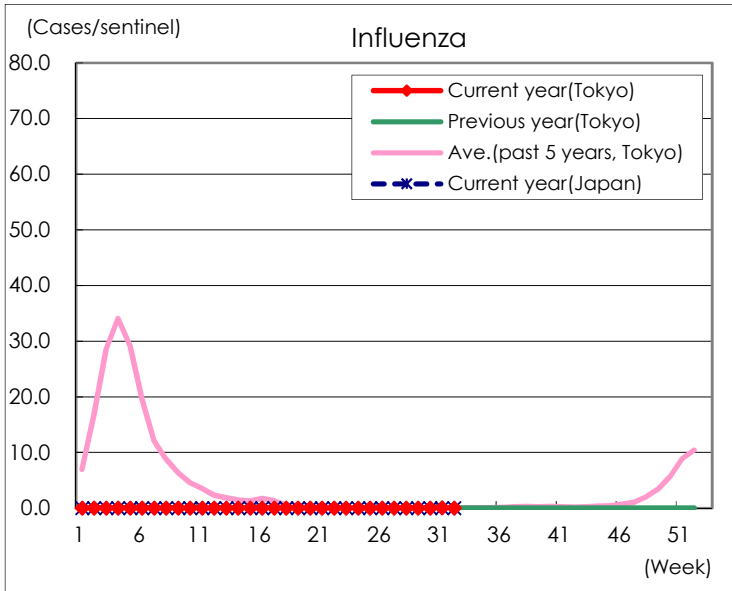
Diseases	Tokyo				
	29th	30th	31st	32nd	/sentinel
Respiratory syncytial virus infection	399	440	441	316	1.40
Pharyngoconjunctival fever	36	30	20	13	0.06
Group A streptococcal pharyngitis	37	33	29	15	0.07
Infectious gastroenteritis	794	705	542	381	1.69
Chickenpox	27	13	11	12	0.05
Hand, foot, and mouth disease	795	1,228	1,254	1,021	4.52
Erythema infectiosum	2	5	3		
Exanthem subitum	59	83	61	44	0.19
Herpangina	254	384	375	225	1.00
Mumps	6	11	8	9	0.04
Kawasaki disease	3	1	2		
Cold with exanthems	6	14	13	8	0.04
Influenza	6	15	23	13	0.04
Acute hemorrhagic conjunctivitis					
Epidemic keratoconjunctivitis	7	7	6	3	0.10
Bacterial meningitis					
Aseptic meningitis	2				
Mycoplasma pneumonia					
Chlamydial pneumonia (excluding psittacosis)			2		
Infectious gastroenteritis (only by Rotavirus)					
Influenza-Associated Hospitalizations	1		1		

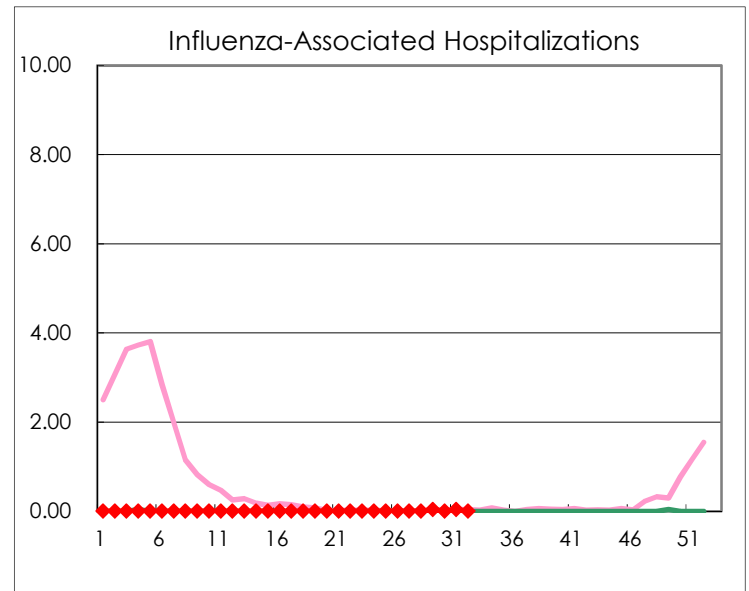
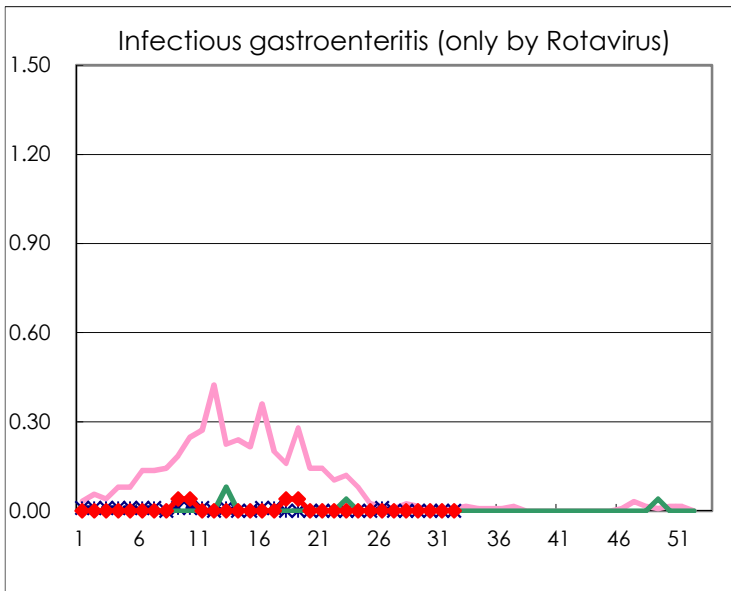
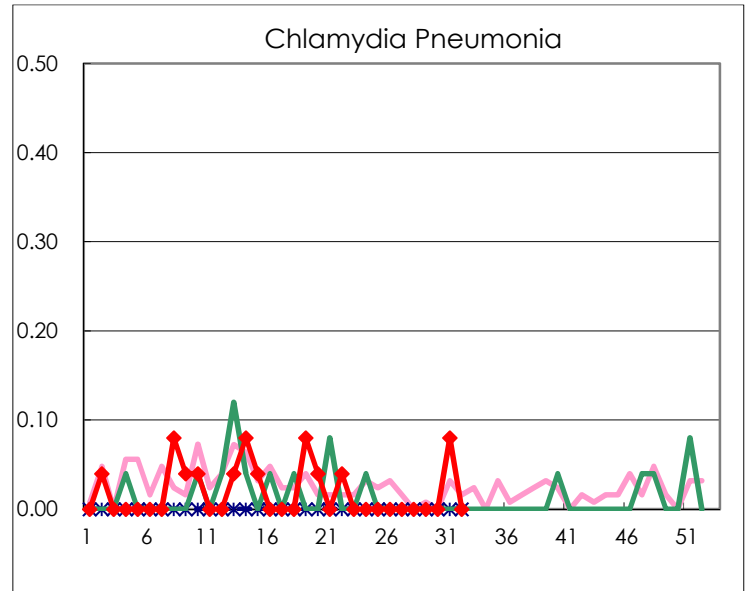
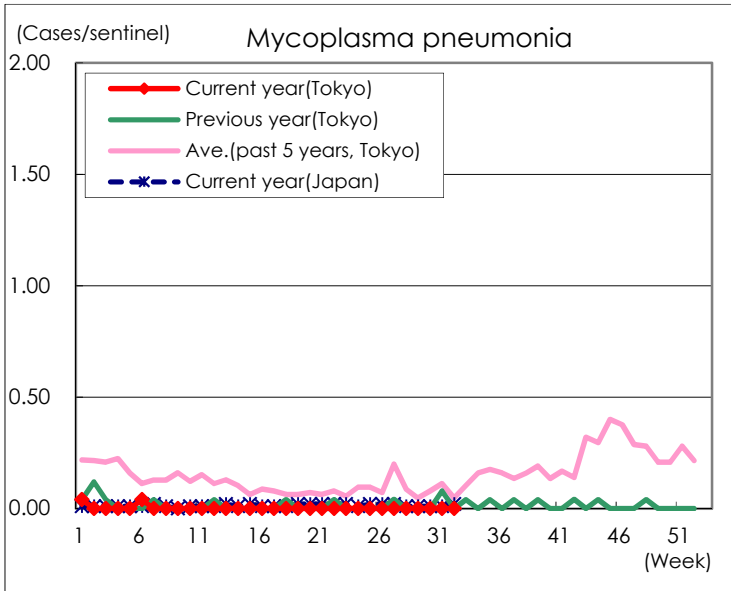
(Blank means 0.)

Disease Trend Graph (weekly reported cases per sentinel in comparison)









Number of sentinel facilities for weekly reporting		
Types of sentinels	Number of sentinels	Sentinels having reported
Pediatric	264	226
Influenza	419	344
Ophthalmic	39	31
Specially-designated	25	25