
INFECTIOUS DISEASES WEEKLY REPORT

TOKYO IDWR

Tokyo Metropolitan Infectious Disease Surveillance Center

15 September 2022 / Number 36
(9/5 ~ 9/11)

Surveillance System in Tokyo, Japan

The infectious diseases which all physicians must report
All physicians must report to health centers the incidence of the diseases which are shown at page one. Health centers electronically report the individual cases to Tokyo Metropolitan Infectious Disease Surveillance Center.

The infectious diseases required to be reported by the sentinels
The numbers of patients who visit the sentinel clinics or hospitals during a week are reported to health centers in Tokyo. And they electronically report the numbers to Tokyo Metropolitan Infectious Disease Surveillance Center. We have about 500 sentinel clinics and hospitals in Tokyo.

Tokyo Metropolitan Institute of Public Health

TEL:81-3-3363-3213 FAX:81-3-5332-7365

e-mail:tmiph@section.metro.tokyo.jp

URL:idsc.tmiph.metro.tokyo.lg.jp/

Number of patients with the diseases which all physicians must report

Category	Diseases	Tokyo					Japan	
		33rd	34th	35th	36th	Cum 2022	36th	Cum 2022
I	Ebola hemorrhagic fever							
	Crimean-Congo hemorrhagic fever							
	Smallpox							
	South American hemorrhagic fever							
	Plague							
	Marburg disease							
	Lassa fever							
II	Acute poliomyelitis							
	Tuberculosis	38	40	28	35	1,390	204	10,031
	Diphtheria							
	Severe Acute Respiratory Syndrome(SARS)							
	Middle East Respiratory Syndrome (MERS)							
	Avian influenza H5N1							
	Avian influenza H7N9							
III	Cholera					1		1
	Shigellosis	1				2		14
	Enterohemorrhagic Escherichia coli infection	13	19	7	17	254	104	2,282
	Typhoid fever			1		5		11
	Paratyphoid fever			1		2		7
IV	Hepatitis E	1		2	3	93	10	306
	West Nile fever							
	Hepatitis A					4		56
	Echinococcosis					3		17
	Yellow fever							
	Psittacosis					1		8
	Omsk hemorrhagic fever							
	Relapsing fever							13
	Kyasanur forest disease							
	Q fever							
	Rabies							
	Coccidioidomycosis							1
	Monkeypox					2		3
	Zika virus infection							
	Severe Fever with Thrombocytopenia Syndrome						3	94
	Hemorrhagic fever with renal syndrome							
	Western equine encephalitis							
	Tick-borne encephalitis							
	Anthrax							
	Chikungunya fever					1		4
	Scrub typhus(Tsutsugamushi disease)					3		99
	Dengue fever			1	1	8	5	46
	Eastern equine encephalitis							
	Avian influenza (excluding H5N1 and H7N9)							
	Nipah virus infection							
	Japanese spotted fever						13	238
	Japanese encephalitis							1
	Hantavirus pulmonary syndrome							
	Herpes B virus infection							
	Glanders							
	Brucellosis							
	Venezuelan equine encephalitis							
	Hendra virus infection							
Epidemic typhus								
Botulism					1		1	
Malaria					4	2	16	
Tularemia								
Lyme disease					2		11	
Lyssavirus infection(excluding rabies)								
Rift valley fever								
Melioidosis							2	
Legionellosis		1	2		69	41	1,415	
Leptospirosis					1	2	14	
Rocky mountain spotted fever								

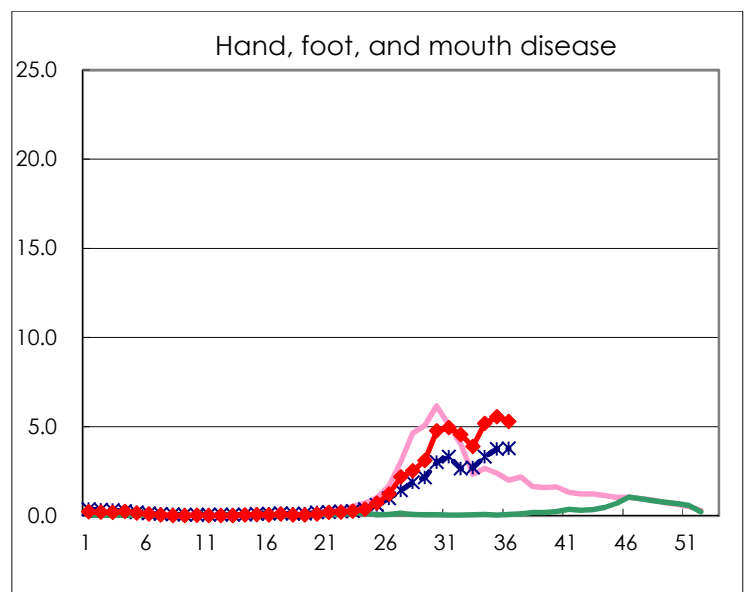
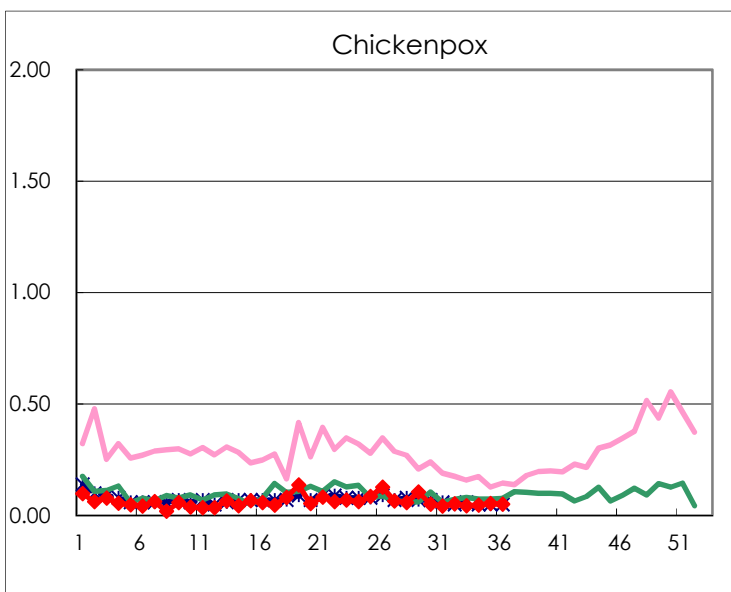
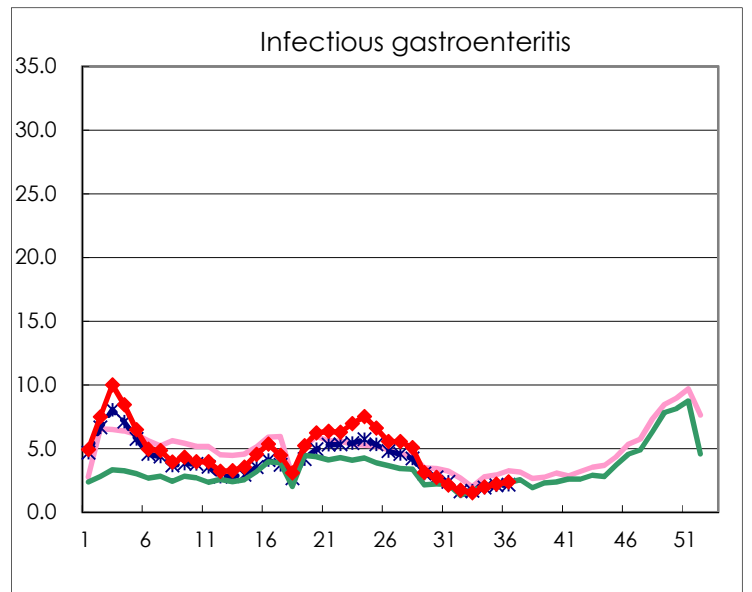
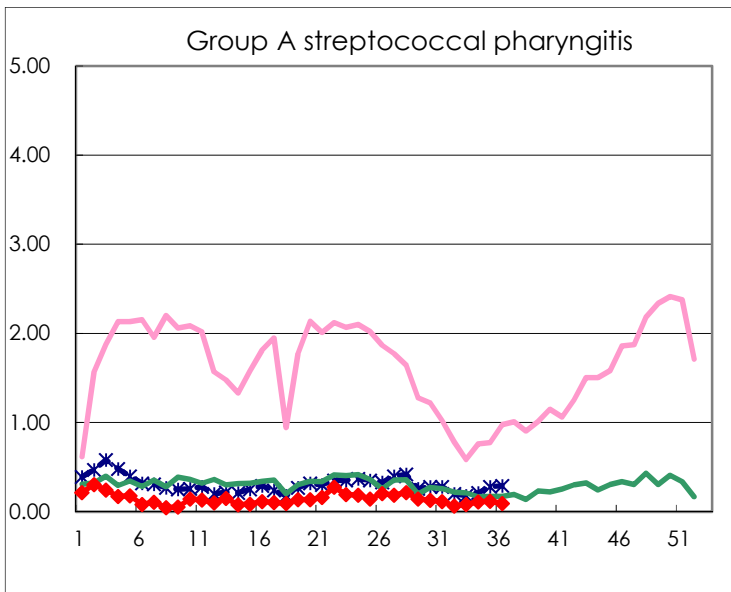
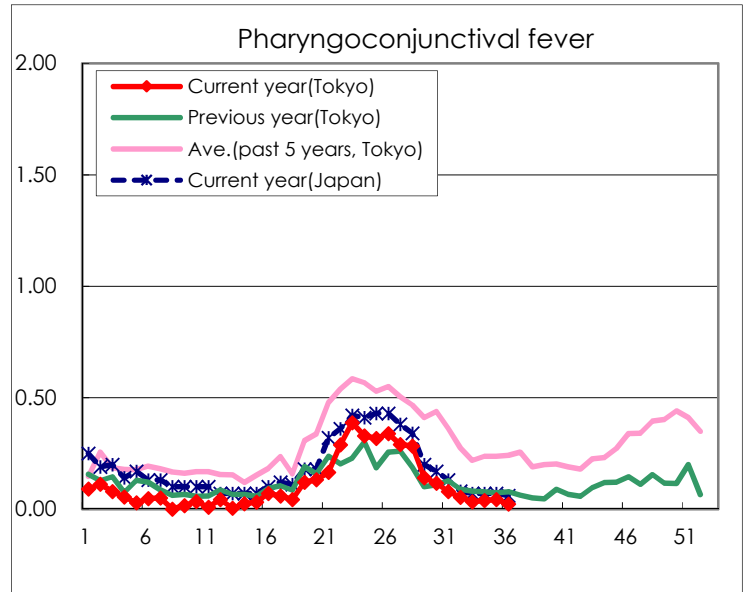
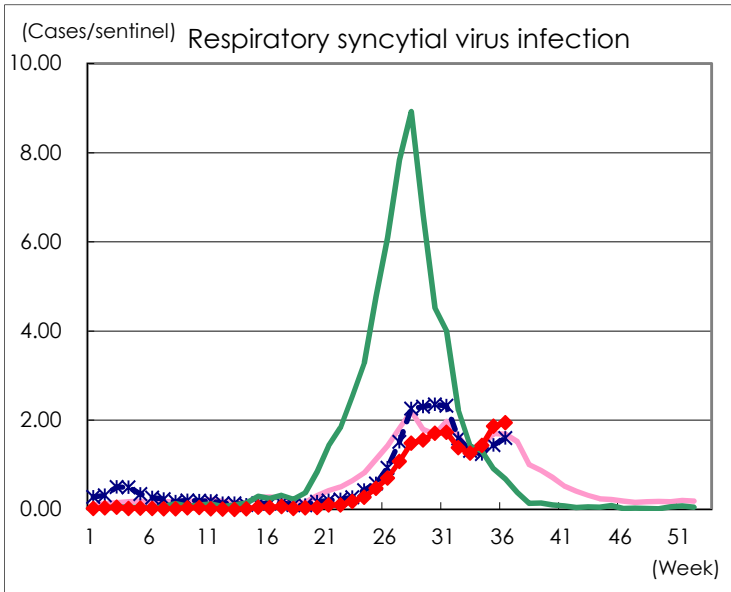
Category	Diseases	Tokyo					Japan	
		33rd	34th	35th	36th	Cum 2022	36th	Cum 2022
V	Amebiasis	2	3	4		91	3	369
	Viral hepatitis(excluding hepatitis A and E)		1	1		27	3	146
	CRE infection	1	7	6	2	140	28	1,197
	Acute Flaccid Paralysis (excluding Acute poliomyelitis)							17
	Acute encephalitis(excluding JE and WNE)	2	1	2		21	3	249
	Cryptosporidiosis					2		6
	Creutzfeldt-Jakob disease				1	14	1	117
	Severe invasive streptococcal infections(TSLS)	1	2	2		76	9	519
	Acquired immunodeficiency syndrome (AIDS)	3	2	3	2	188	6	594
	Giardiasis	1				11		27
	Invasive <i>Haemophilus influenzae</i> disease	1				12	2	122
	Invasive meningococcal disease							5
	Invasive pneumococcal disease	4	3	3		98	7	834
	Varicella (limited to hospitalized case)			2		33	1	217
	Congenital rubella syndrome							
	Syphilis	84	90	76	68	2,442	173	8,456
	Disseminated cryptococcosis	1		1		12	2	99
	Tetanus	1				4	1	64
	Vancomycin-resistant <i>S. aureus</i> infection							
	Vancomycin-resistant <i>Enterococcus</i> infection					4	1	104
	Pertussis	2	1	2	1	34	13	344
Rubella			1		2		10	
Measles							5	
MDRA infection					2	1	11	

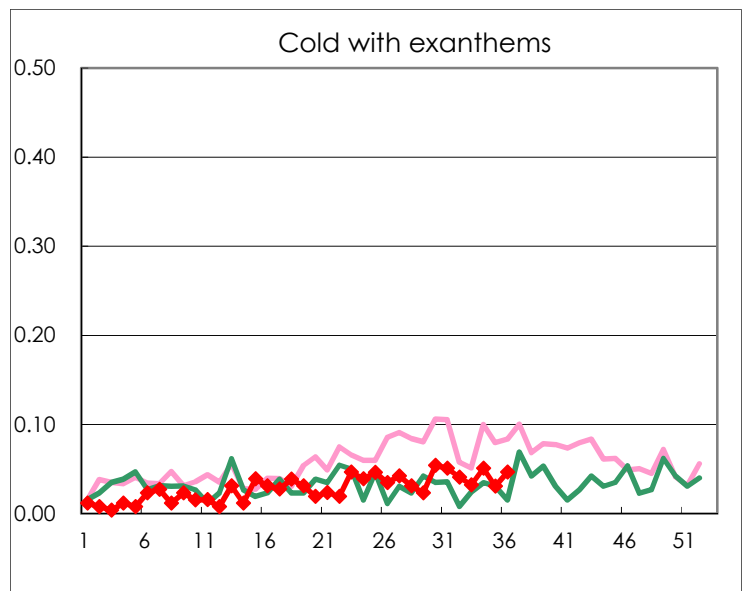
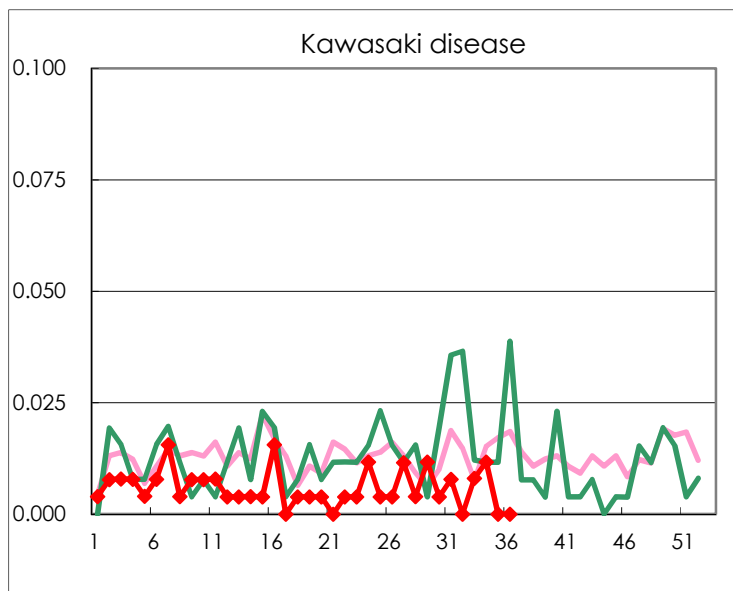
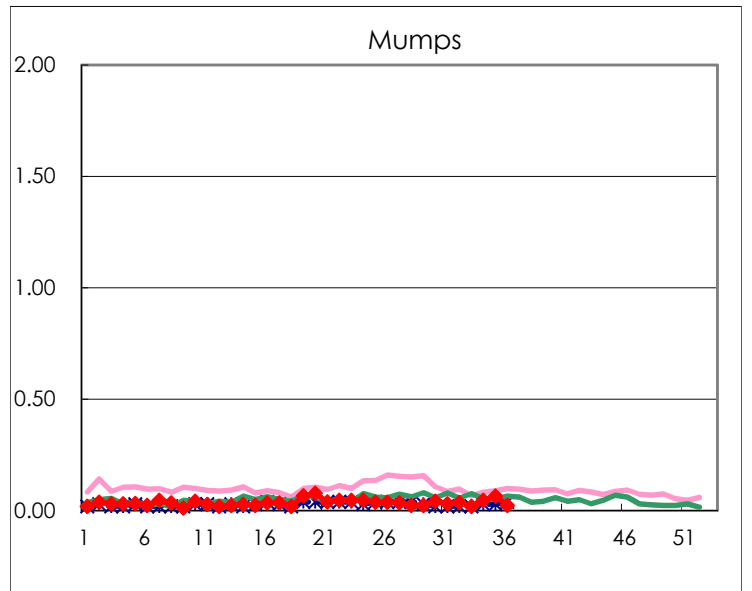
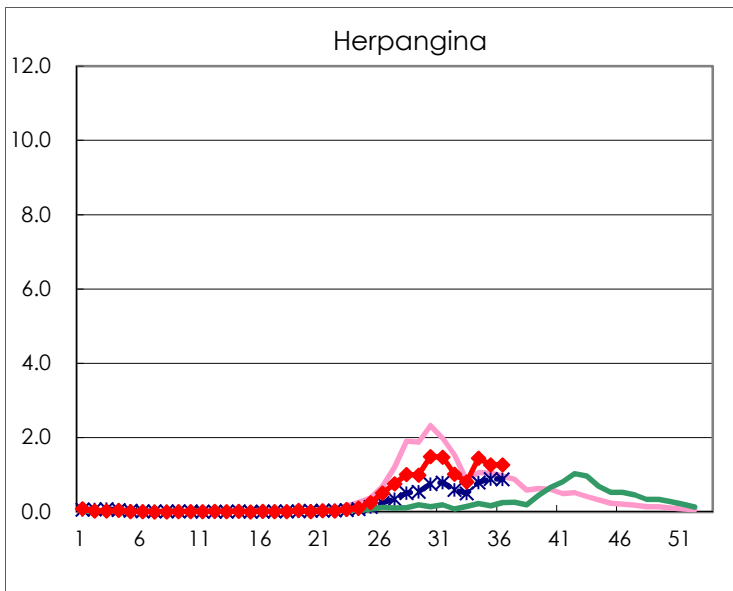
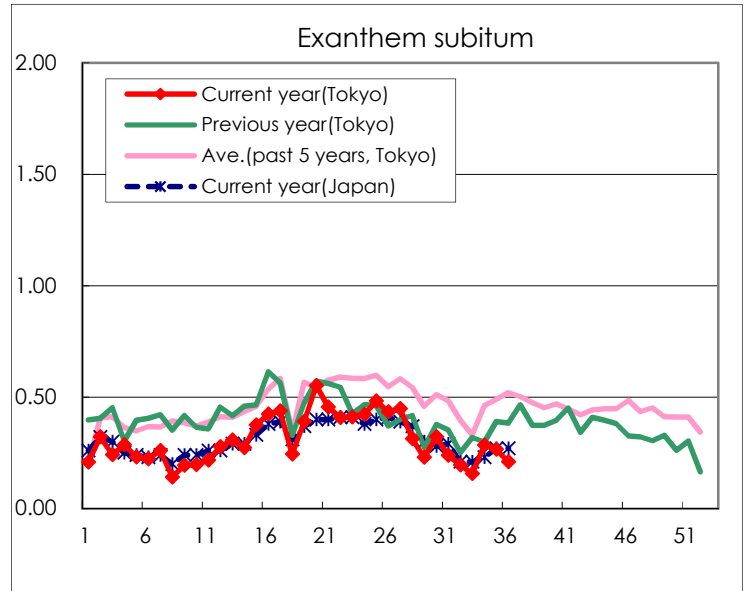
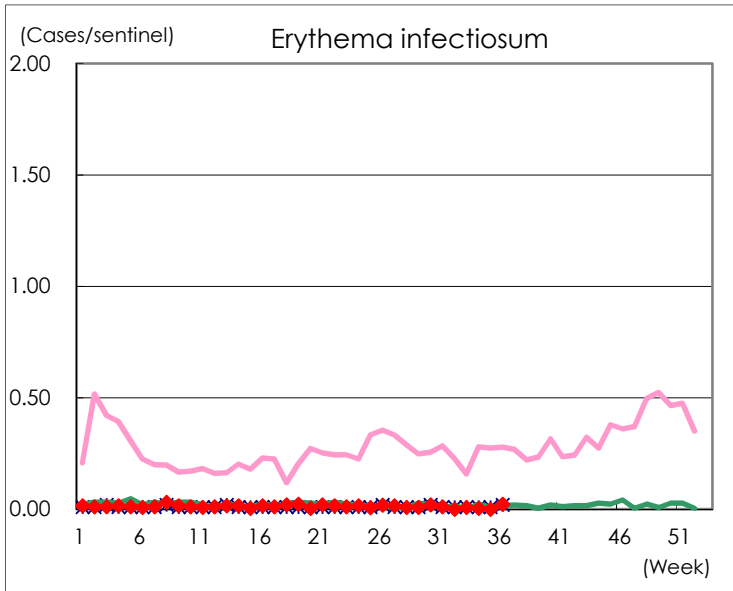
Number of patients with the diseases to be reported
by the designated clinics and hospitals

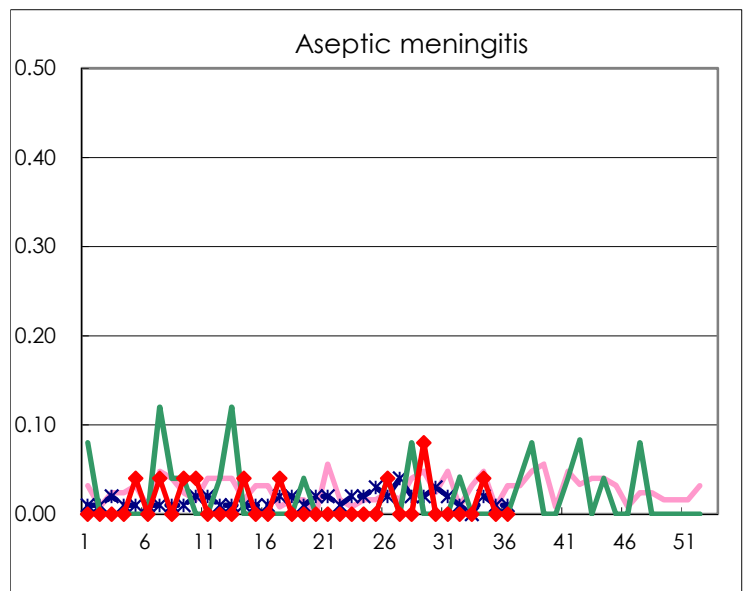
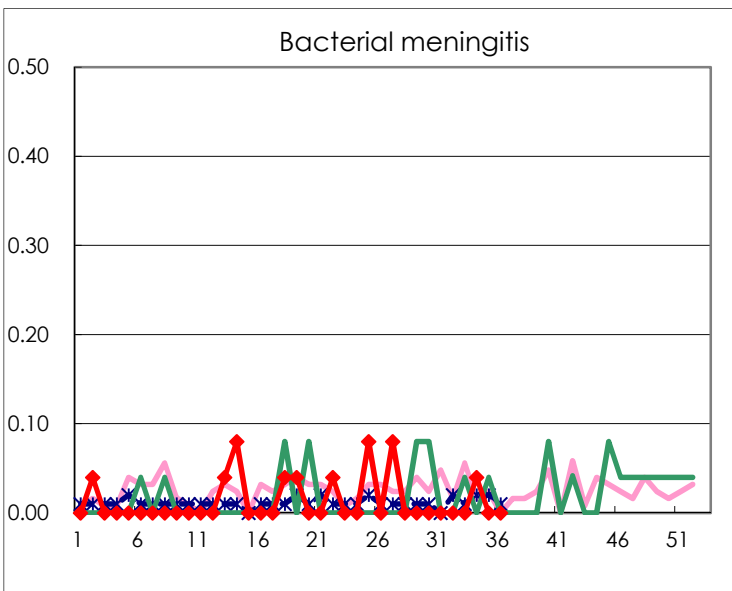
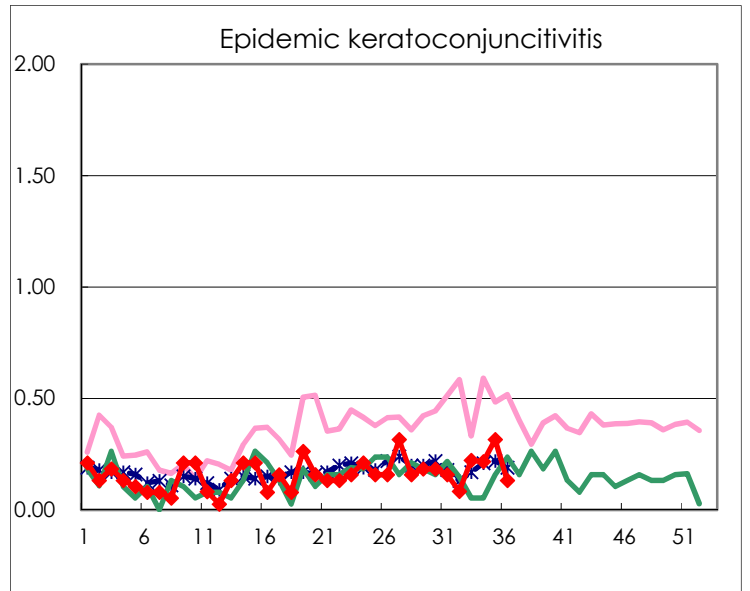
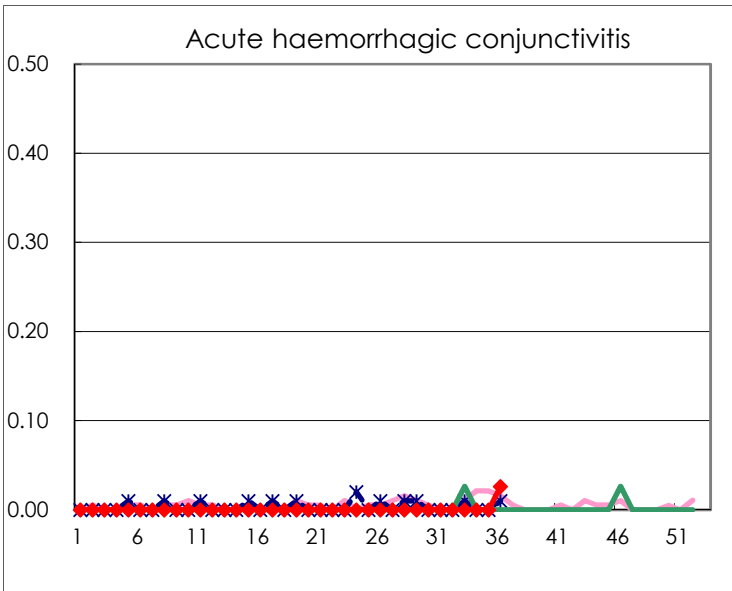
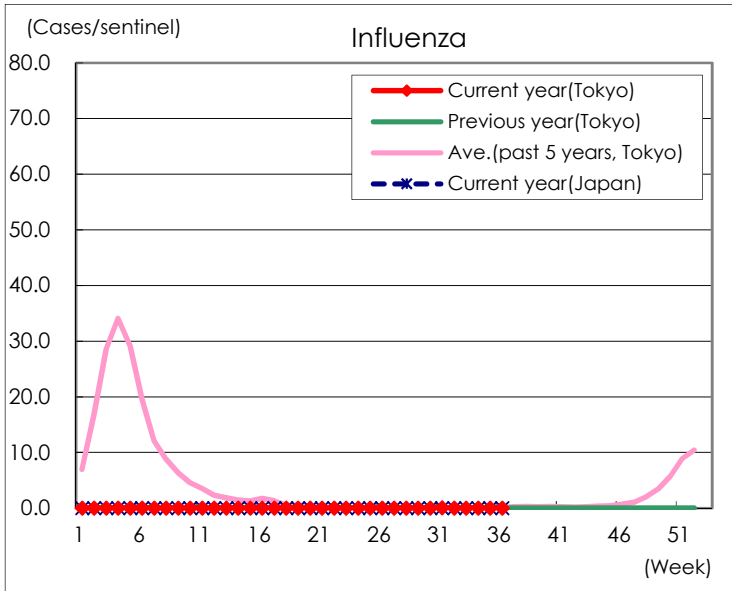
Diseases	Tokyo				
	33rd	34th	35th	36th	/sentinel
Respiratory syncytial virus infection	313	367	482	501	1.94
Pharyngoconjunctival fever	8	10	11	6	0.02
Group A streptococcal pharyngitis	20	28	31	24	0.09
Infectious gastroenteritis	377	504	571	614	2.38
Chickenpox	11	12	14	13	0.05
Hand, foot, and mouth disease	965	1,324	1,440	1,365	5.29
Erythema infectiosum	2	1		6	0.02
Exanthem subitum	39	73	69	54	0.21
Herpangina	201	370	327	326	1.26
Mumps	5	12	17	6	0.02
Kawasaki disease	2	3			
Cold with exanthems	8	13	8	12	0.05
Influenza	8	5	8	7	0.02
Acute hemorrhagic conjunctivitis				1	0.03
Epidemic keratoconjunctivitis	8	8	12	5	0.13
Bacterial meningitis		1			
Aseptic meningitis		1			
<i>Mycoplasma pneumoniae</i>				1	0.04
Chlamydial pneumonia (excluding psittacosis)					
Infectious gastroenteritis (only by Rotavirus)					
Influenza-Associated Hospitalizations					

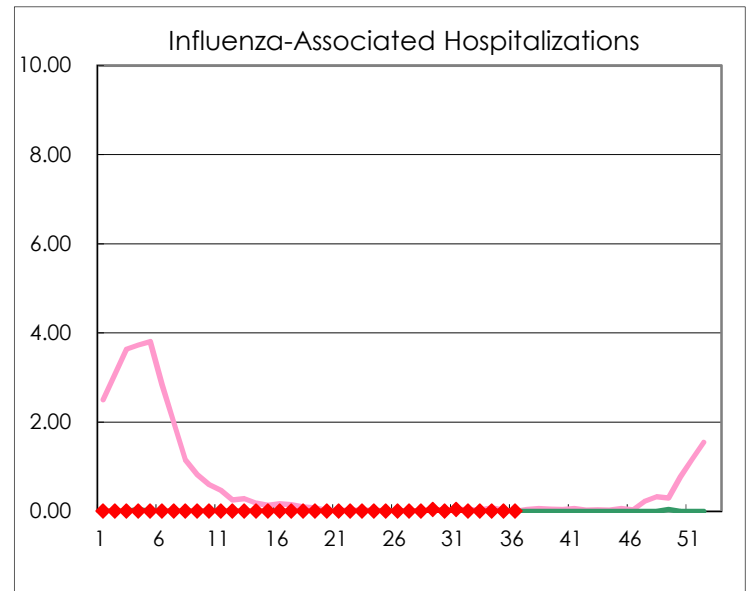
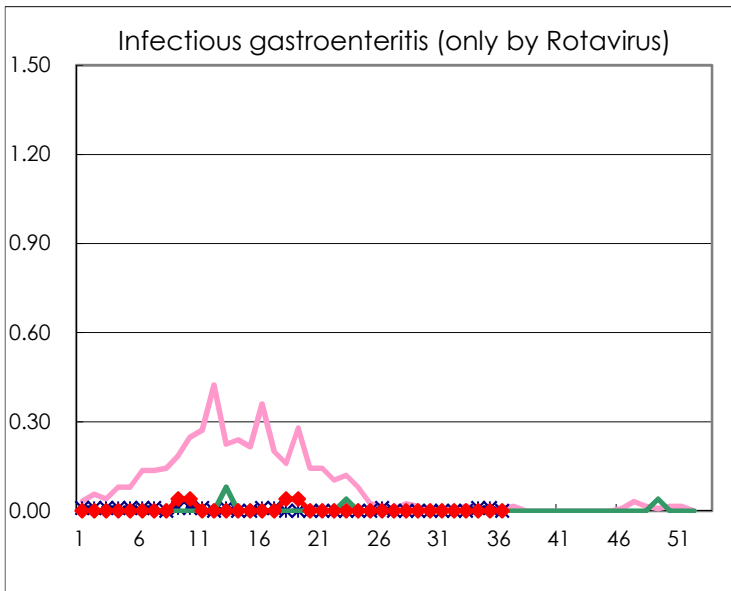
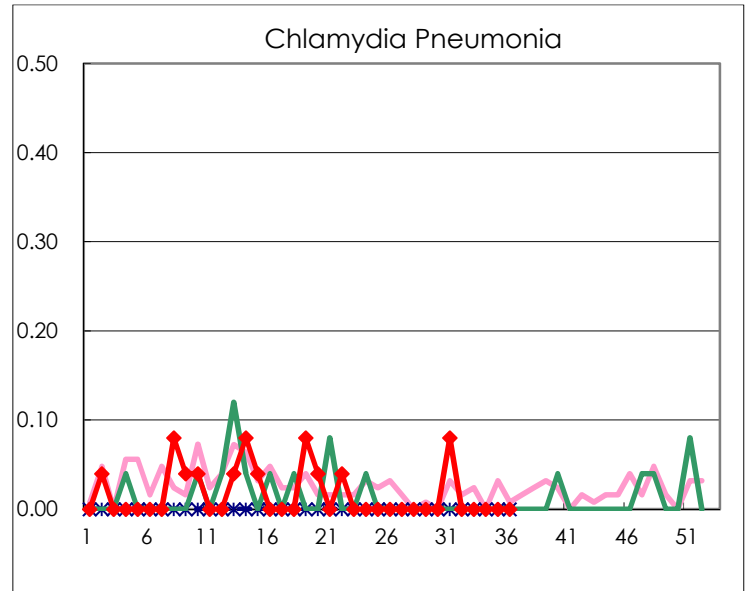
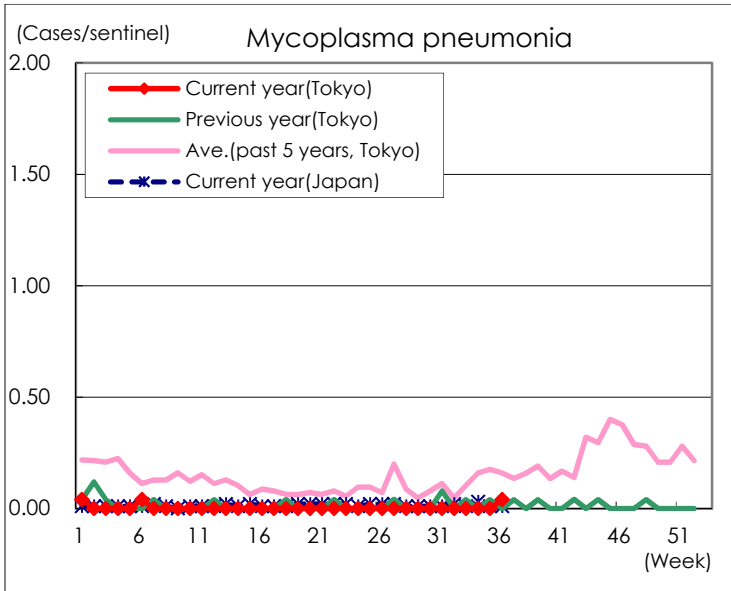
(Blank means 0.)

Disease Trend Graph (weekly reported cases per sentinel in comparison)









Number of sentinel facilities for weekly reporting		
Types of sentinels	Number of sentinels	Sentinels having reported
Pediatric	264	258
Influenza	419	409
Ophthalmic	39	38
Specially-designated	25	25