
INFECTIOUS DISEASES WEEKLY REPORT

TOKYO IDWR

Tokyo Metropolitan Infectious Disease Surveillance Center

29 September 2022 / Number 38 (9/19 ~ 9/25)

Surveillance System in Tokyo, Japan

The infectious diseases which all physicians must report
All physicians must report to health centers the incidence of the diseases which are shown at page one. Health centers electronically report the individual cases to Tokyo Metropolitan Infectious Disease Surveillance Center.

The infectious diseases required to be reported by the sentinels
The numbers of patients who visit the sentinel clinics or hospitals during a week are reported to health centers in Tokyo. And they electronically report the numbers to Tokyo Metropolitan Infectious Disease Surveillance Center. We have about 500 sentinel clinics and hospitals in Tokyo.

Tokyo Metropolitan Institute of Public Health

TEL:81-3-3363-3213 FAX:81-3-5332-7365

e-mail:tmiph@section.metro.tokyo.jp

URL:idsc.tmiph.metro.tokyo.lg.jp/

Number of patients with the diseases which all physicians must report

Category	Diseases	Tokyo					Japan	
		35th	36th	37th	38th	Cum 2022	38th	Cum 2022
I	Ebola hemorrhagic fever							
	Crimean-Congo hemorrhagic fever							
	Smallpox							
	South American hemorrhagic fever							
	Plague							
	Marburg disease							
	Lassa fever							
II	Acute poliomyelitis							
	Tuberculosis	33	38	36	25	1,467	141	10,553
	Diphtheria							
	Severe Acute Respiratory Syndrome(SARS)							
	Middle East Respiratory Syndrome (MERS)							
	Avian influenza H5N1							
	Avian influenza H7N9							
III	Cholera					1		1
	Shigellosis					2		14
	Enterohemorrhagic Escherichia coli infection	7	17	10	8	273	63	2,481
	Typhoid fever	1				5		11
	Paratyphoid fever	1				2		7
IV	Hepatitis E	2	3	3	1	97	5	320
	West Nile fever							
	Hepatitis A					4		57
	Echinococcosis					3		17
	Yellow fever							
	Psittacosis				1	2	1	9
	Omsk hemorrhagic fever							
	Relapsing fever							13
	Kyasanur forest disease							
	Q fever							
	Rabies							
	Coccidioidomycosis							1
	Monkeypox				1	3	1	4
	Zika virus infection							
	Severe Fever with Thrombocytopenia Syndrome			1		1	1	98
	Hemorrhagic fever with renal syndrome							
	Western equine encephalitis							
	Tick-borne encephalitis							
	Anthrax							
	Chikungunya fever					1		4
	Scrub typhus(Tsutsugamushi disease)					3		98
	Dengue fever	1	1		1	9	5	52
	Eastern equine encephalitis							
	Avian influenza (excluding H5N1 and H7N9)							
	Nipah virus infection							
	Japanese spotted fever						13	278
	Japanese encephalitis							1
	Hantavirus pulmonary syndrome							
	Herpes B virus infection							
	Glanders							
	Brucellosis							
	Venezuelan equine encephalitis							
	Hendra virus infection							
Epidemic typhus								
Botulism					1		1	
Malaria					4		18	
Tularemia								
Lyme disease					2		11	
Lyssavirus infection(excluding rabies)								
Rift valley fever								
Melioidosis							2	
Legionellosis	2	1	7	3	80	40	1,544	
Leptospirosis		1		1	3	1	20	
Rocky mountain spotted fever								

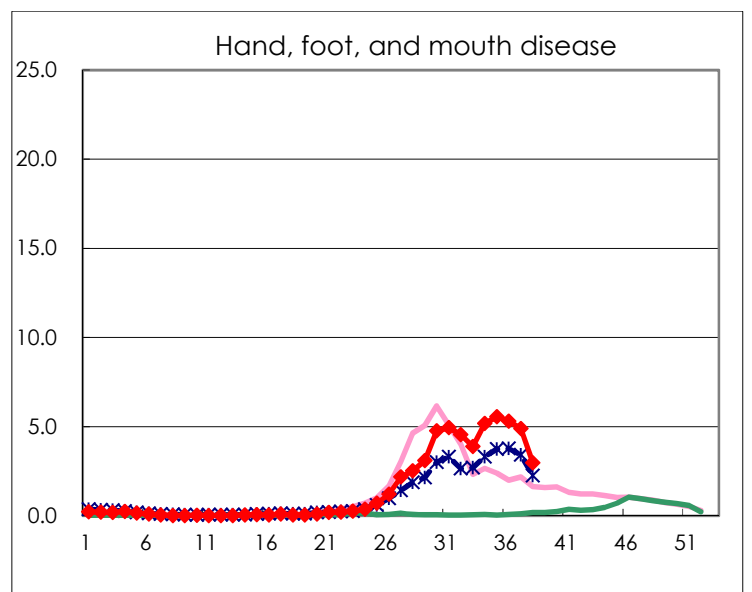
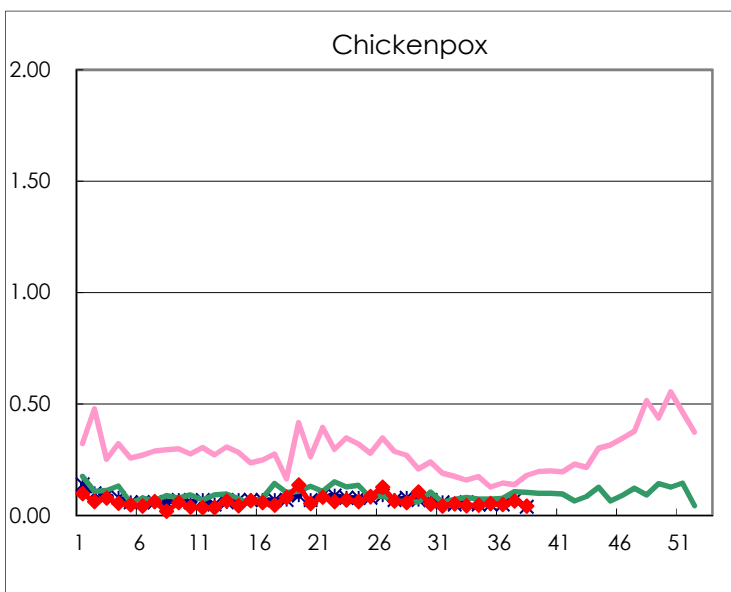
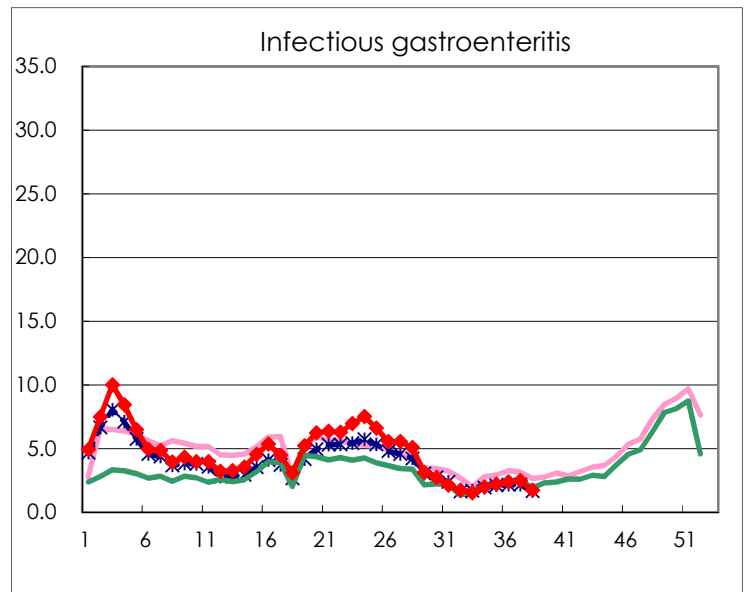
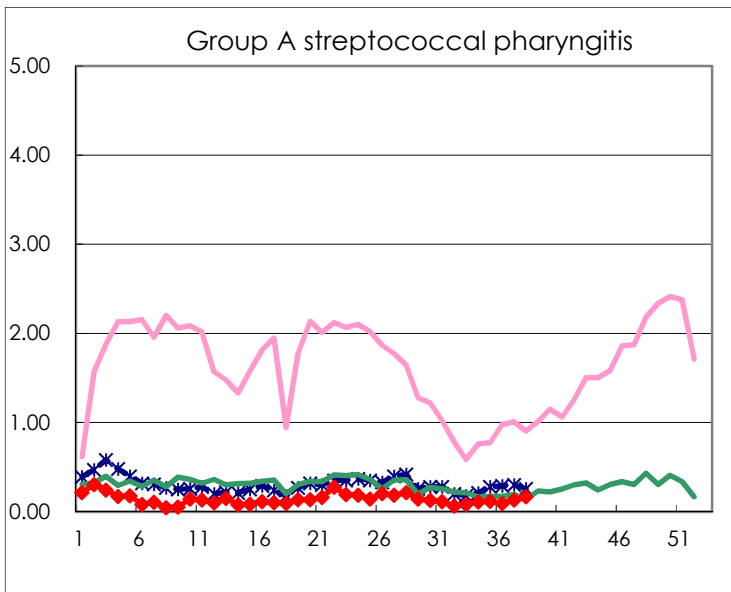
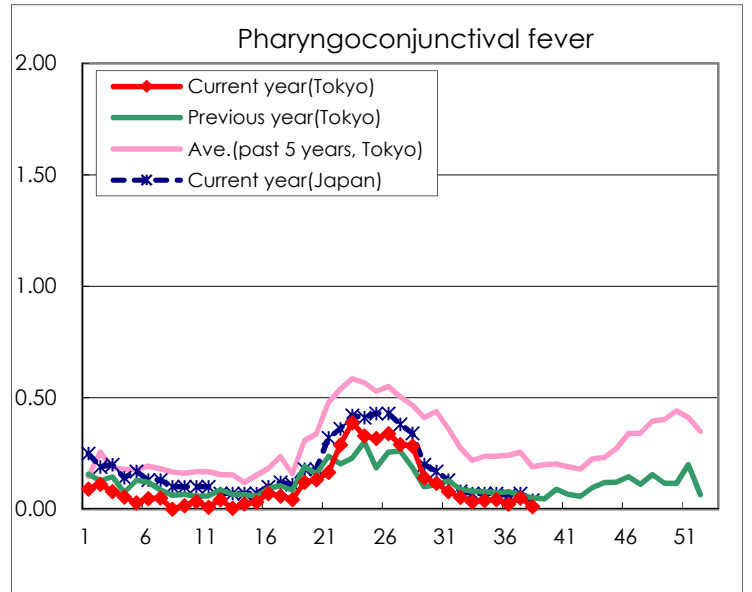
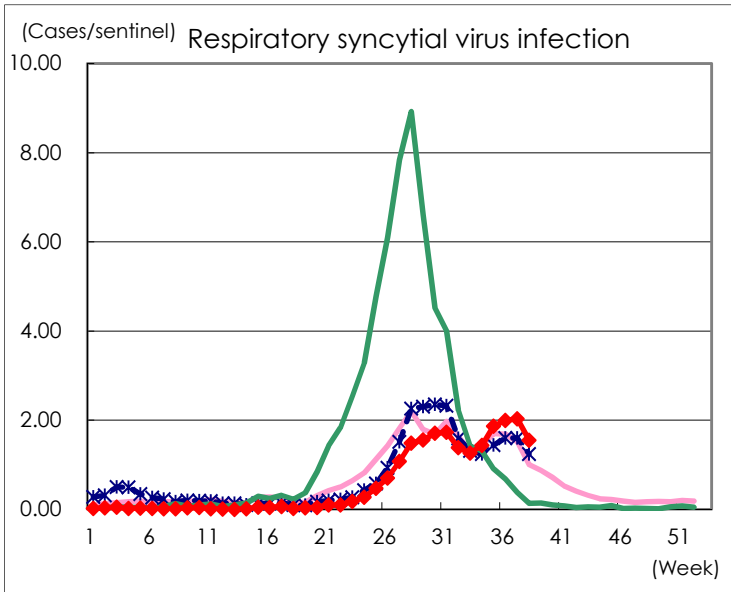
Category	Diseases	Tokyo					Japan	
		35th	36th	37th	38th	Cum 2022	38th	Cum 2022
V	Amebiasis	4		1	1	93	5	385
	Viral hepatitis(excluding hepatitis A and E)	1				27	2	151
	CRE infection	6	3	5	1	147	14	1,287
	Acute Flaccid Paralysis (excluding Acute poliomyelitis)							19
	Acute encephalitis(excluding JE and WNE)	2	2		1	24	3	272
	Cryptosporidiosis					2		6
	Creutzfeldt-Jakob disease		1			14	4	125
	Severe invasive streptococcal infections(TSLS)	3		2		79	4	537
	Acquired immunodeficiency syndrome (AIDS)	3	2	5	4	197	4	625
	Giardiasis					11		27
	Invasive <i>Haemophilus influenzae</i> disease					12	2	126
	Invasive meningococcal disease							5
	Invasive pneumococcal disease	3		4	1	103	8	870
	Varicella (limited to hospitalized case)	2			2	35	3	227
	Congenital rubella syndrome							
	Syphilis	76	85	83	56	2,598	104	8,970
	Disseminated cryptococcosis	1			1	13	1	105
	Tetanus					4	3	72
	Vancomycin-resistant <i>S. aureus</i> infection							
	Vancomycin-resistant <i>Enterococcus</i> infection			1		5	1	108
	Pertussis	2	1	1	1	36	5	356
Rubella	1				2		10	
Measles							5	
MDRA infection					2		11	

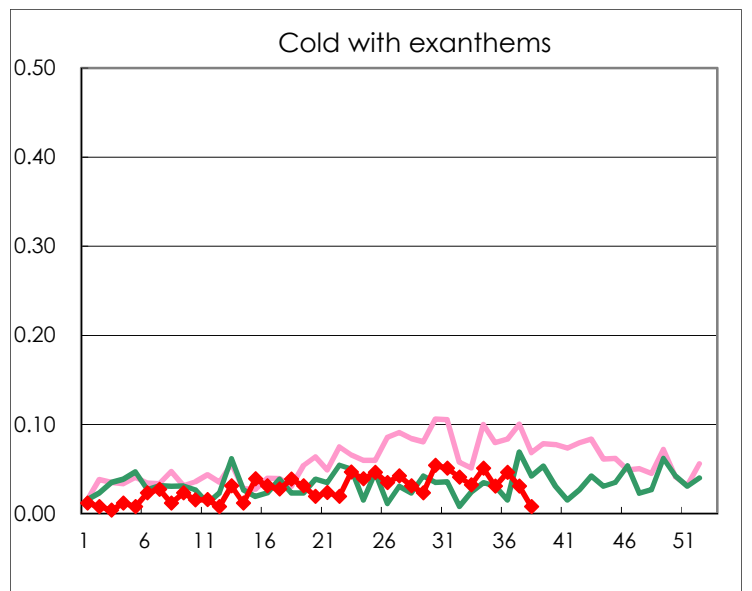
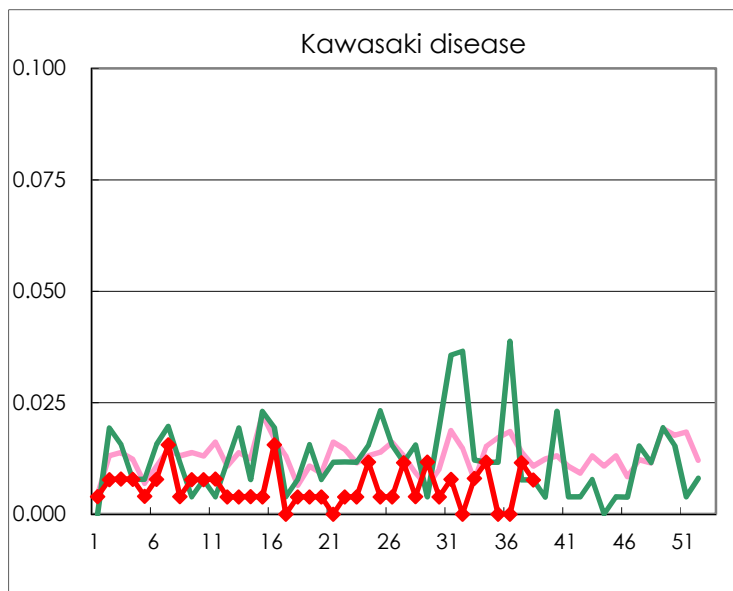
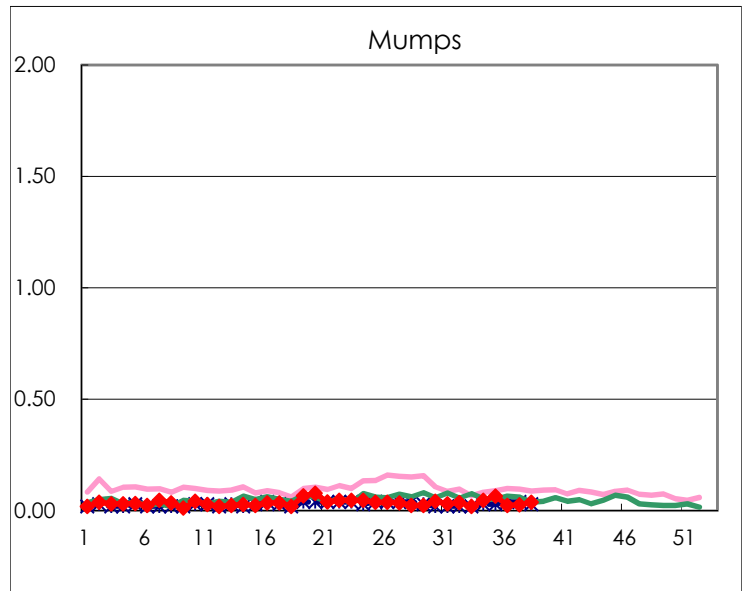
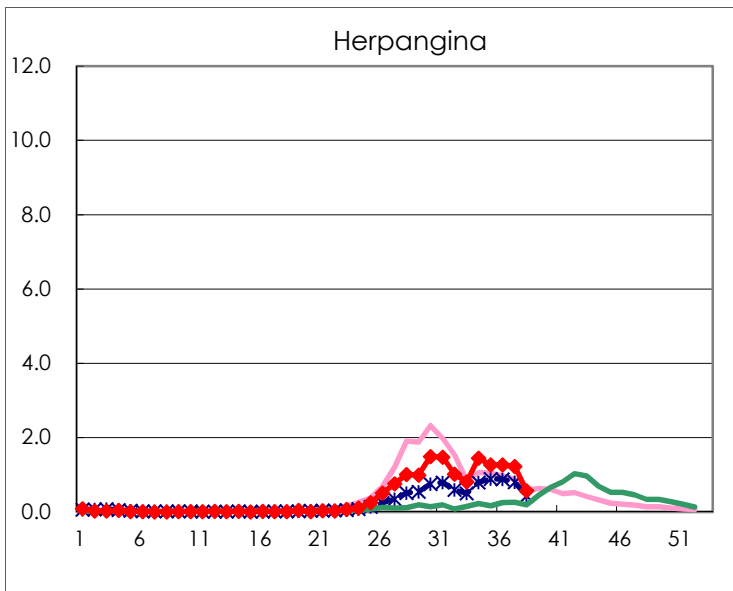
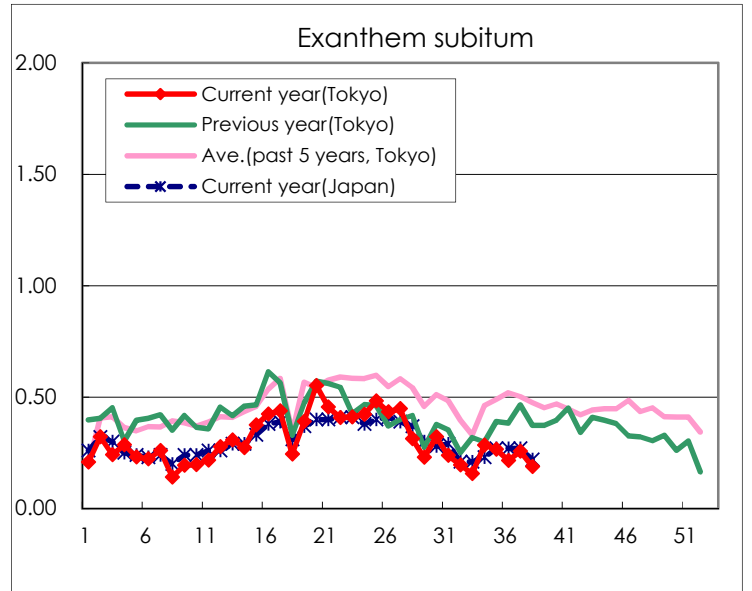
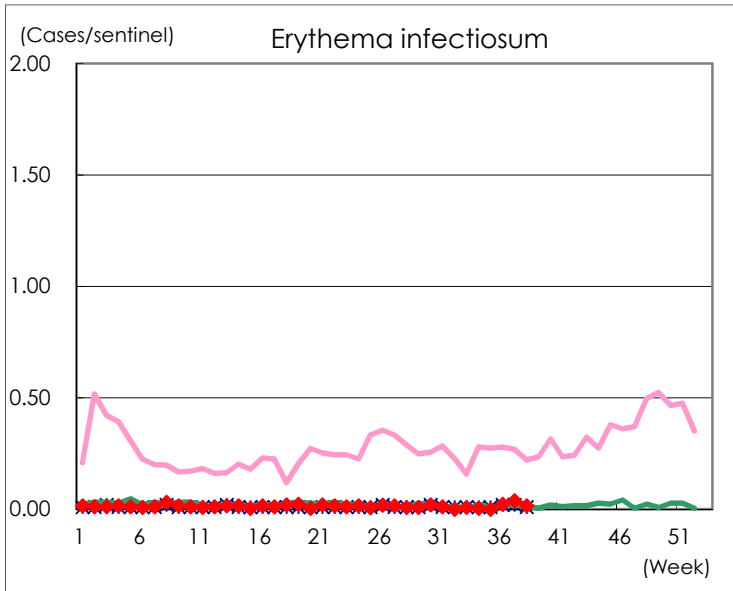
Number of patients with the diseases to be reported
by the designated clinics and hospitals

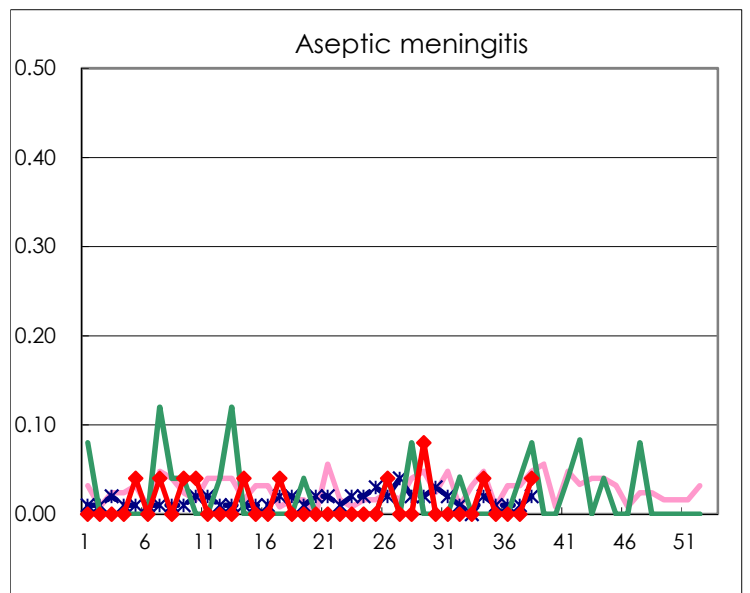
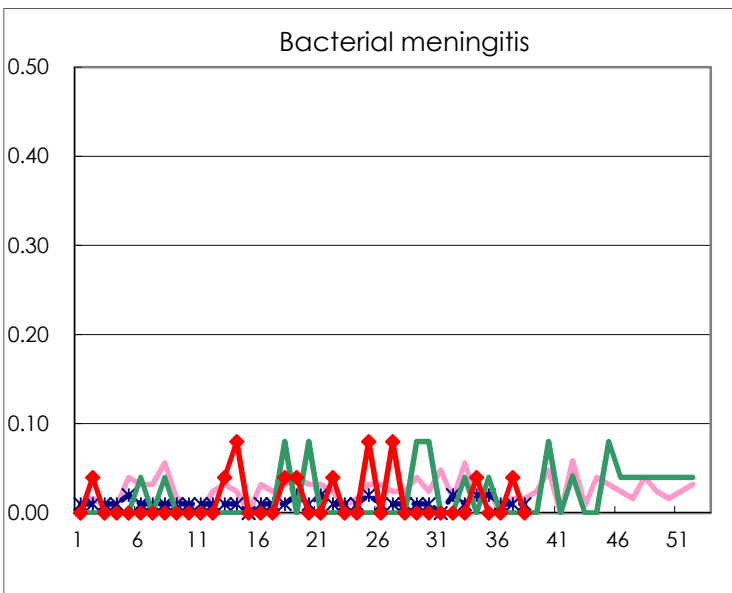
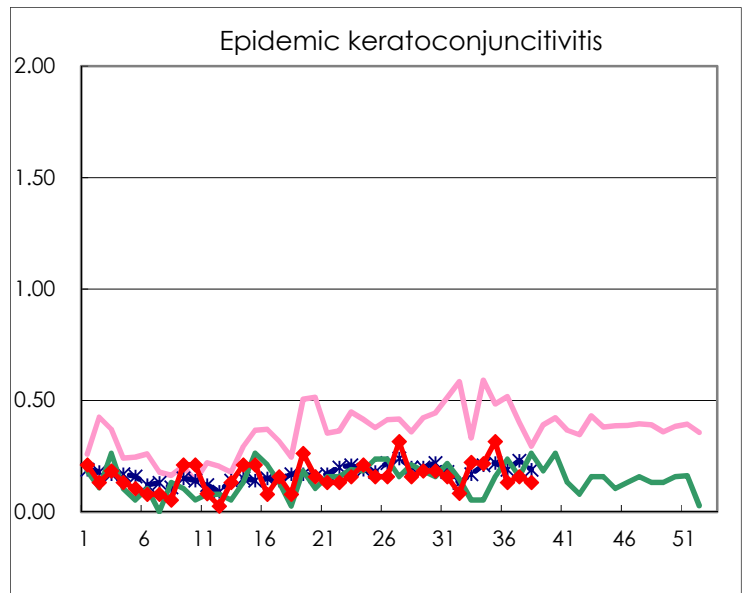
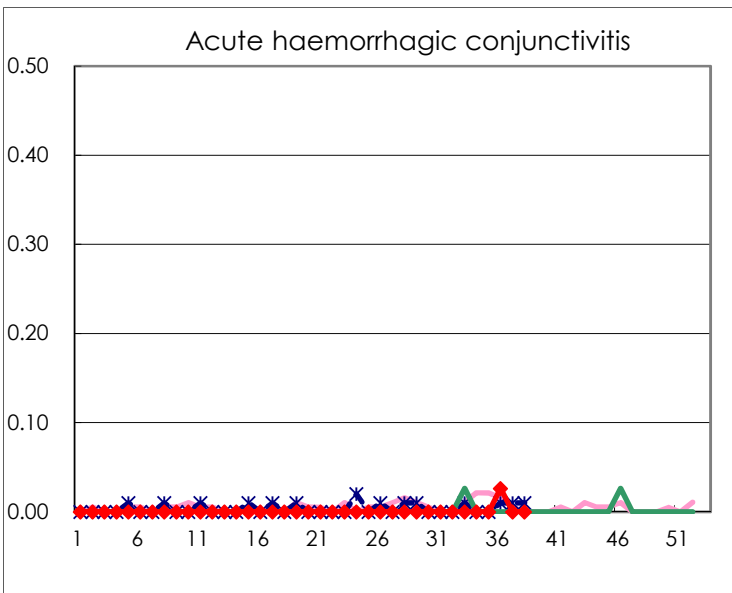
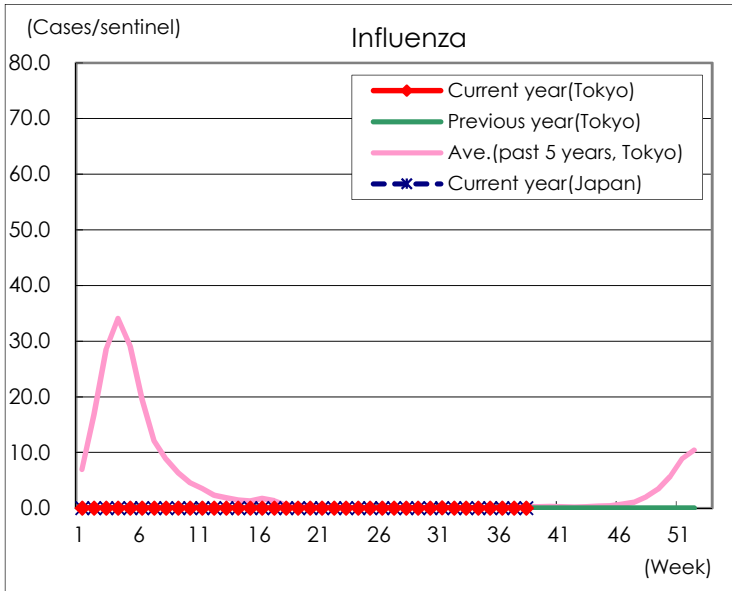
Diseases	Tokyo				
	35th	36th	37th	38th	/sentinel
Respiratory syncytial virus infection	482	516	528	403	1.55
Pharyngoconjunctival fever	11	6	13	3	0.01
Group A streptococcal pharyngitis	31	24	34	44	0.17
Infectious gastroenteritis	571	617	646	449	1.73
Chickenpox	14	13	17	11	0.04
Hand, foot, and mouth disease	1,440	1,376	1,274	772	2.97
Erythema infectiosum		6	10	4	0.02
Exanthem subitum	69	56	67	49	0.19
Herpangina	327	329	318	148	0.57
Mumps	17	6	7	10	0.04
Kawasaki disease			3	2	0.01
Cold with exanthems	8	12	8	2	0.01
Influenza	8	7	8	7	0.02
Acute hemorrhagic conjunctivitis		1			
Epidemic keratoconjunctivitis	12	5	6	5	0.13
Bacterial meningitis			1		
Aseptic meningitis				1	0.04
Mycoplasma pneumonia		1			
Chlamydial pneumonia (excluding psittacosis)			2	2	0.08
Infectious gastroenteritis (only by Rotavirus)					
Influenza-Associated Hospitalizations					

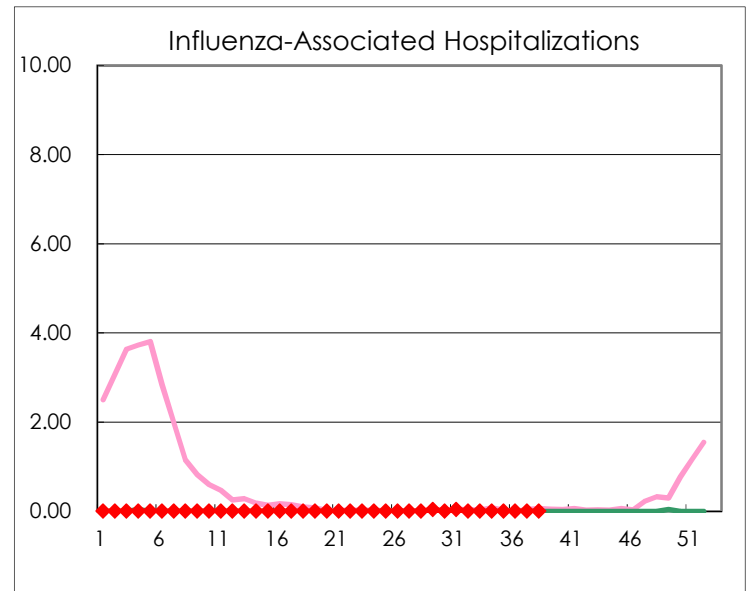
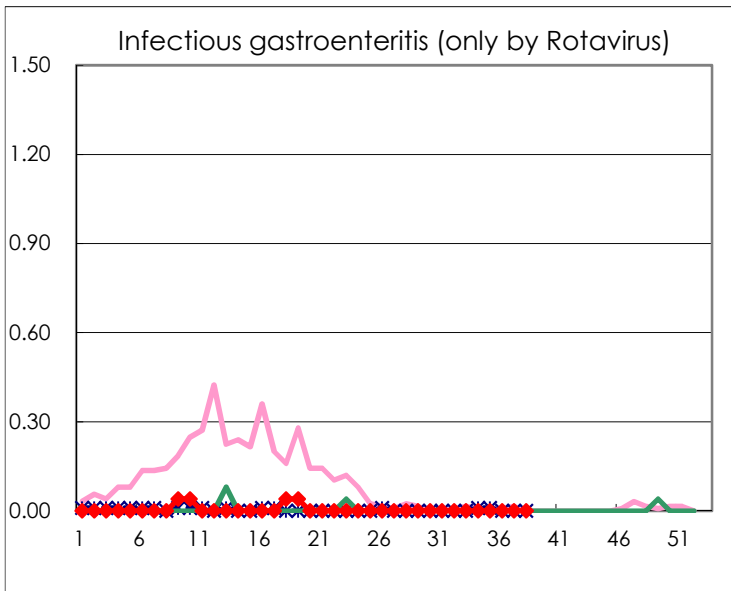
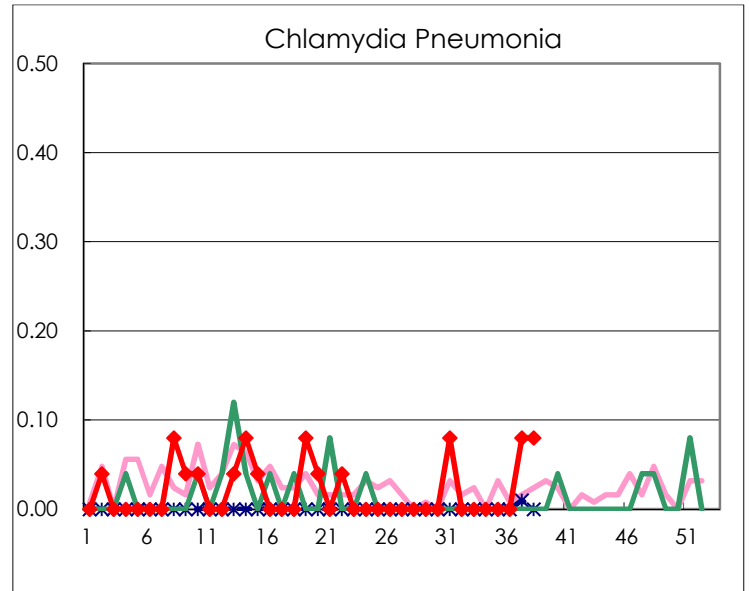
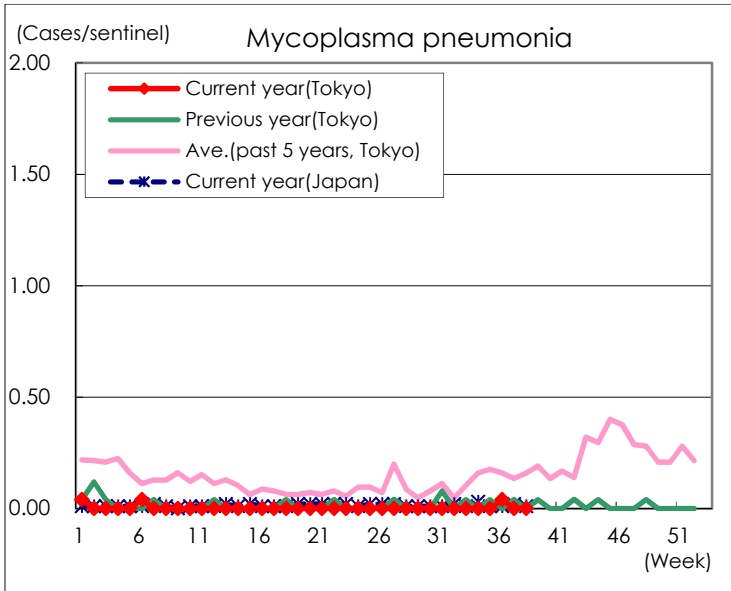
(Blank means 0.)

Disease Trend Graph (weekly reported cases per sentinel in comparison)









Number of sentinel facilities for weekly reporting		
Types of sentinels	Number of sentinels	Sentinels having reported
Pediatric	264	260
Influenza	419	409
Ophthalmic	39	38
Specially-designated	25	25