

---

INFECTIOUS DISEASES WEEKLY REPORT

# TOKYO IDWR

Tokyo Metropolitan Infectious Disease Surveillance Center

**27 October 2022 / Number 42**  
**( 10/17 ~ 10/23 )**

## Surveillance System in Tokyo, Japan

The infectious diseases which all physicians must report  
All physicians must report to health centers the incidence of the diseases which are shown at page one. Health centers electronically report the individual cases to Tokyo Metropolitan Infectious Disease Surveillance Center.

The infectious diseases required to be reported by the sentinels  
The numbers of patients who visit the sentinel clinics or hospitals during a week are reported to health centers in Tokyo. And they electronically report the numbers to Tokyo Metropolitan Infectious Disease Surveillance Center. We have about 500 sentinel clinics and hospitals in Tokyo.

Tokyo Metropolitan Institute of Public Health

TEL:81-3-3363-3213 FAX:81-3-5332-7365

e-mail:tmiph@section.metro.tokyo.jp

URL:idsc.tmiph.metro.tokyo.lg.jp/

---

Number of patients with the diseases which all physicians must report

Category	Diseases	Tokyo					Japan	
		39th	40th	41st	42nd	Cum 2022	42nd	Cum 2022
I	Ebola hemorrhagic fever							
	Crimean-Congo hemorrhagic fever							
	Smallpox							
	South American hemorrhagic fever							
	Plague							
	Marburg disease							
	Lassa fever							
II	Acute poliomyelitis							
	Tuberculosis	42	28	30	42	1,616	226	11,753
	Diphtheria							
	Severe Acute Respiratory Syndrome(SARS)							
	Middle East Respiratory Syndrome (MERS)							
	Avian influenza H5N1							
	Avian influenza H7N9							
III	Cholera					1		1
	Shigellosis					2		14
	Enterohemorrhagic Escherichia coli infection	10	12	4	9	319	79	2,879
	Typhoid fever		1			6	2	15
	Paratyphoid fever		1			3		8
IV	Hepatitis E	5		1	1	108	2	350
	West Nile fever							
	Hepatitis A	1				5		60
	Echinococcosis					3		19
	Yellow fever							
	Psittacosis					2		9
	Omsk hemorrhagic fever							
	Relapsing fever							17
	Kyasanur forest disease							
	Q fever							
	Rabies							
	Coccidioidomycosis							1
	Monkeypox	1	1			5		6
	Zika virus infection							
	Severe Fever with Thrombocytopenia Syndrome					1	2	108
	Hemorrhagic fever with renal syndrome							
	Western equine encephalitis							
	Tick-borne encephalitis							
	Anthrax							
	Chikungunya fever					1		5
	Scrub typhus(Tsutsugamushi disease)					3	1	105
	Dengue fever	1	1	1	1	14	3	70
	Eastern equine encephalitis							
	Avian influenza (excluding H5N1 and H7N9)							
	Nipah virus infection							
	Japanese spotted fever						18	393
	Japanese encephalitis						2	5
	Hantavirus pulmonary syndrome							
	Herpes B virus infection							
	Glanders							
	Brucellosis							1
	Venezuelan equine encephalitis							
	Hendra virus infection							
Epidemic typhus								
Botulism					1		1	
Malaria	2				6	2	23	
Tularemia								
Lyme disease					2		13	
Lyssavirus infection(excluding rabies)								
Rift valley fever								
Melioidosis							2	
Legionellosis	4	5	1	2	94	61	1,819	
Leptospirosis	1				4	1	36	
Rocky mountain spotted fever								

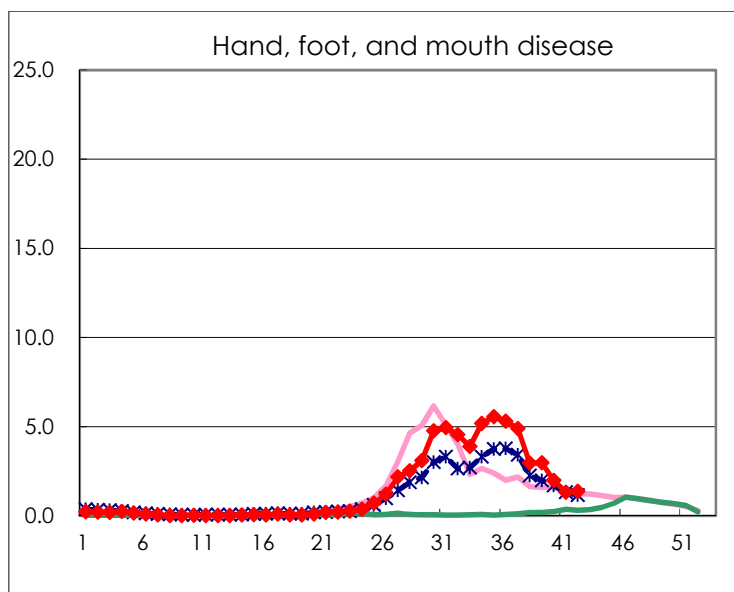
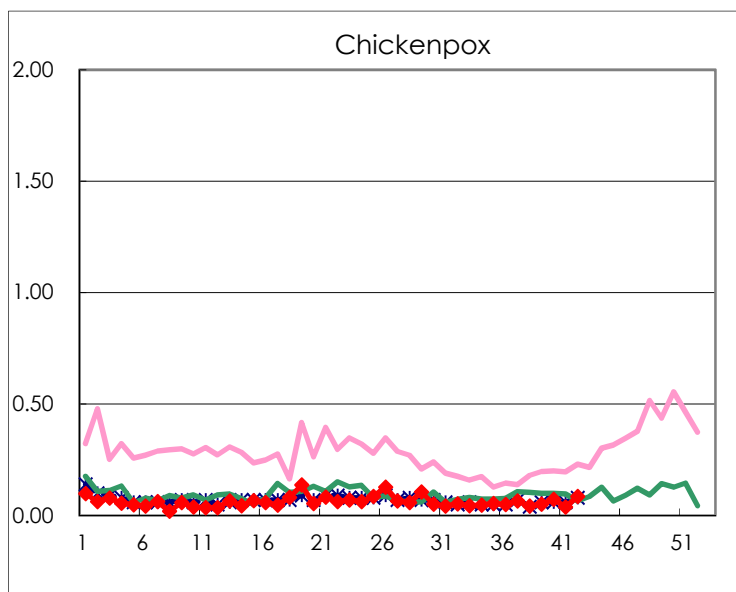
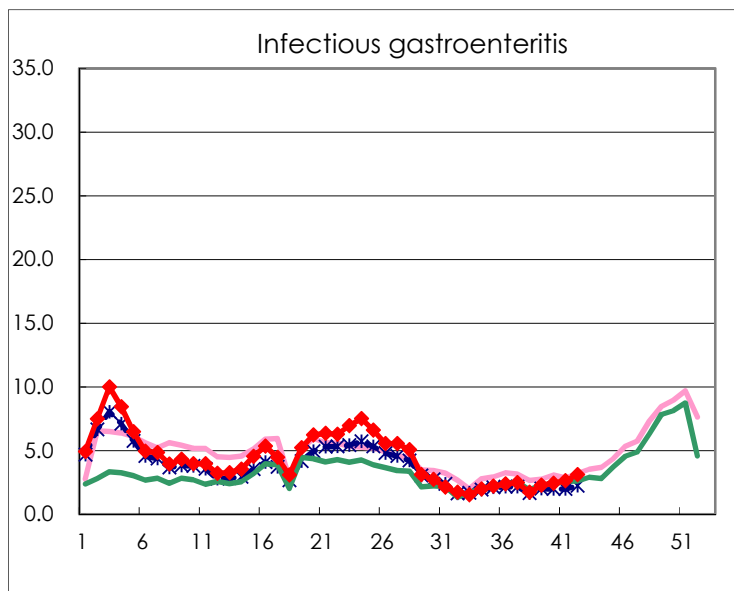
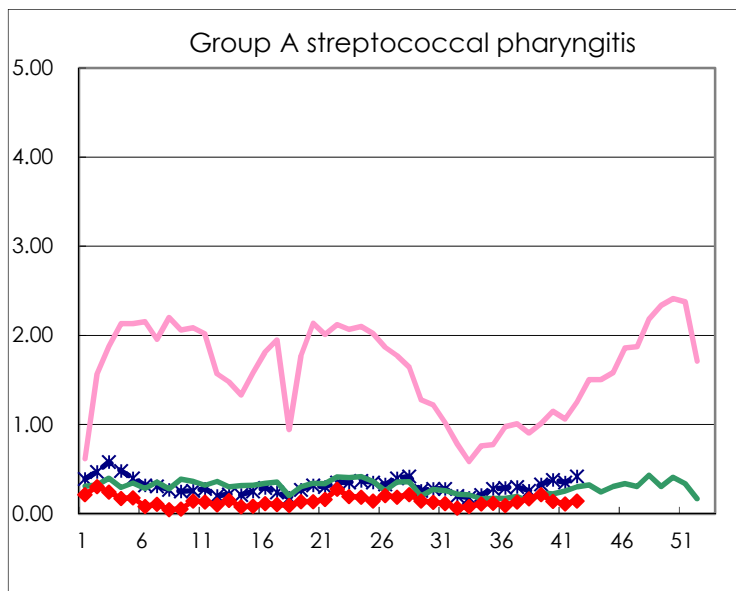
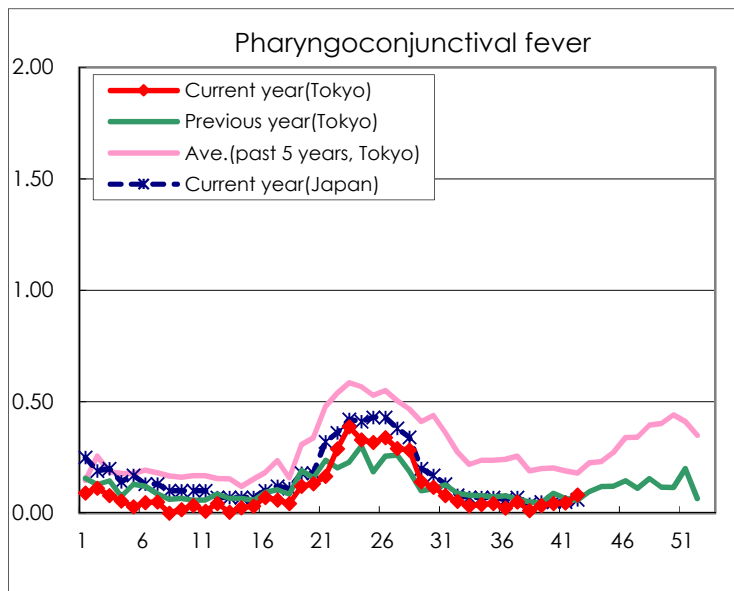
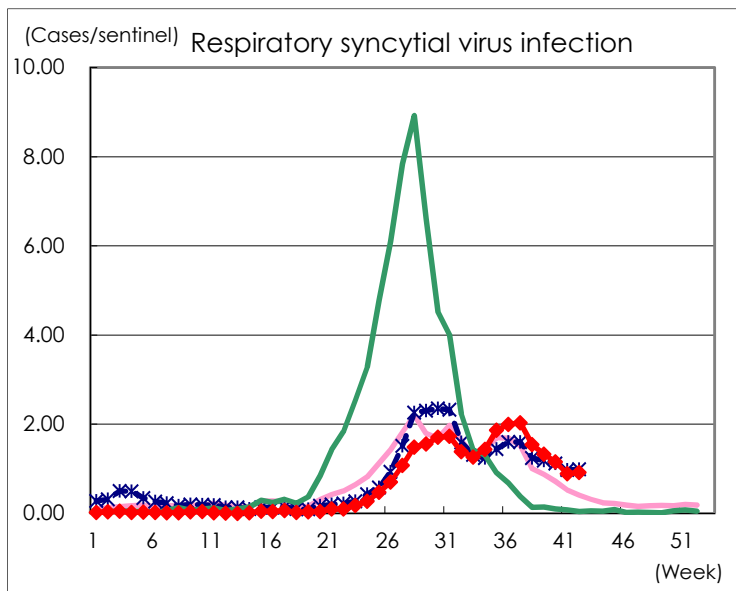
Category	Diseases	Tokyo					Japan	
		39th	40th	41st	42nd	Cum 2022	42nd	Cum 2022
V	Amebiasis	3	2	1	1	101	6	434
	Viral hepatitis(excluding hepatitis A and E)		1	1		29	2	158
	CRE infection	4	6	3	2	165	36	1,510
	Acute Flaccid Paralysis (excluding Acute poliomyelitis)	1			2	3	2	25
	Acute encephalitis(excluding JE and WNE)	1	1			27	5	306
	Cryptosporidiosis					2		6
	Creutzfeldt-Jakob disease		1			16	3	138
	Severe invasive streptococcal infections(TSLS)			1	2	84	9	587
	Acquired immunodeficiency syndrome (AIDS)	7	5	5	1	222	10	702
	Giardiasis					11		30
	Invasive <i>Haemophilus influenzae</i> disease		1		1	15	3	143
	Invasive meningococcal disease							5
	Invasive pneumococcal disease		1	1	2	109	17	963
	Varicella (limited to hospitalized case)	1	1		2	39	4	253
	Congenital rubella syndrome							
	Syphilis	55	76	77	74	2,901	164	10,141
	Disseminated cryptococcosis					13	2	119
	Tetanus					4	2	86
	Vancomycin-resistant <i>S. aureus</i> infection							
	Vancomycin-resistant <i>Enterococcus</i> infection					5	2	118
Pertussis	2	1	1		42	14	383	
Rubella					2		10	
Measles							6	
MDRA infection					2		11	

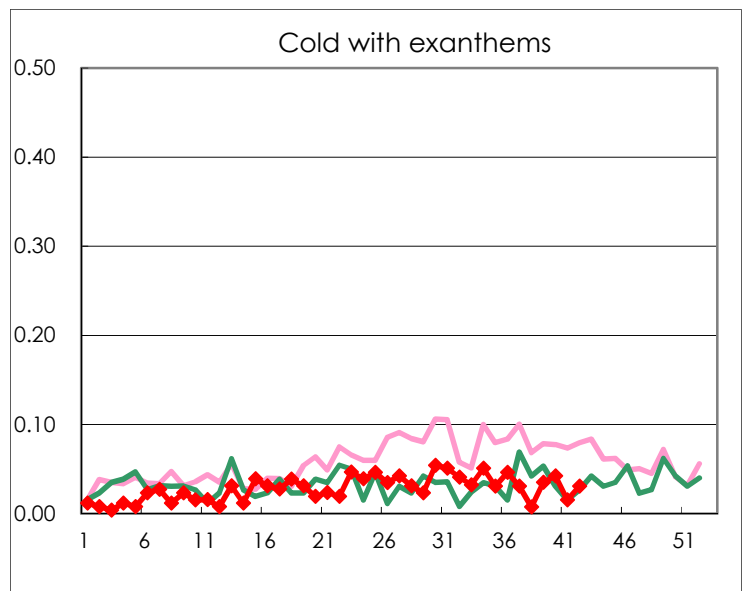
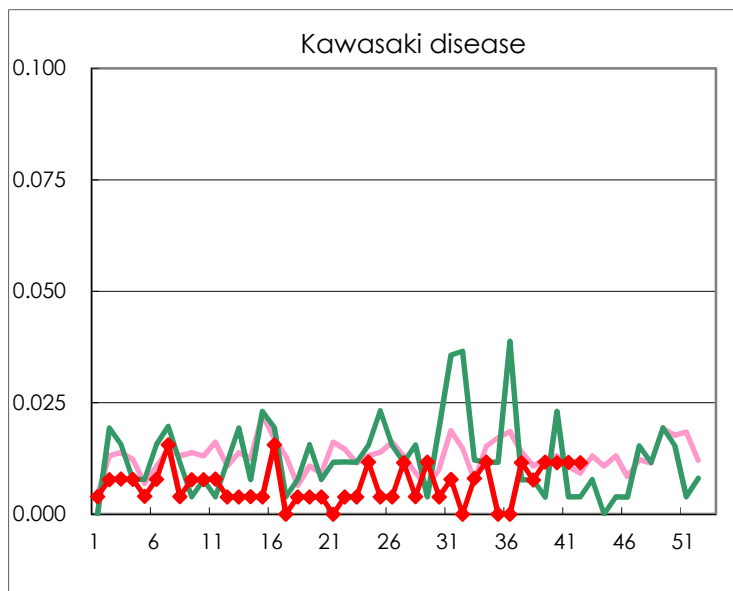
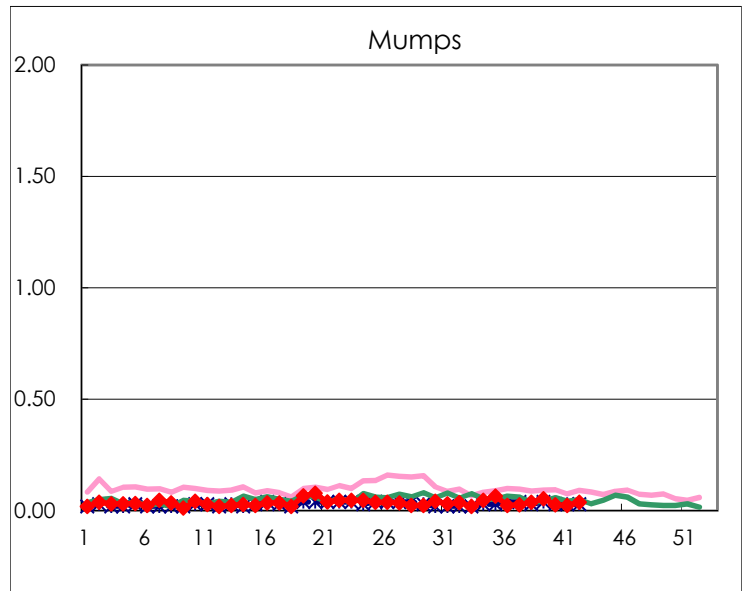
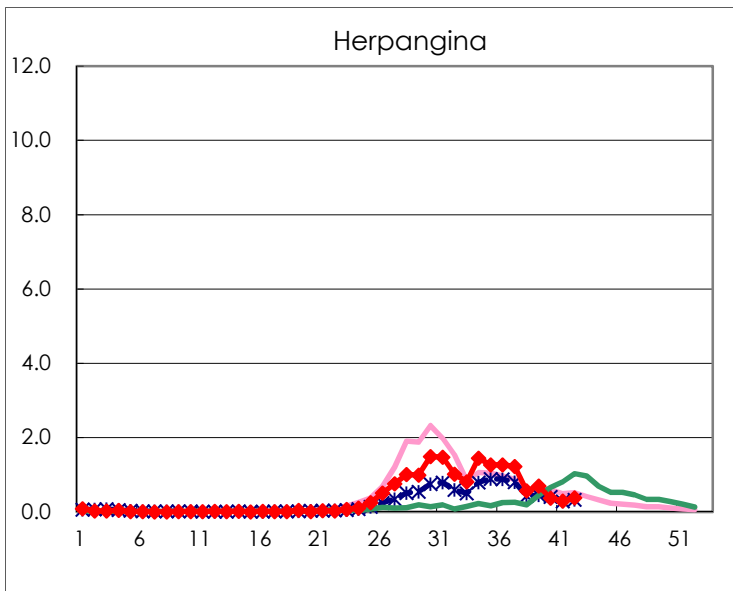
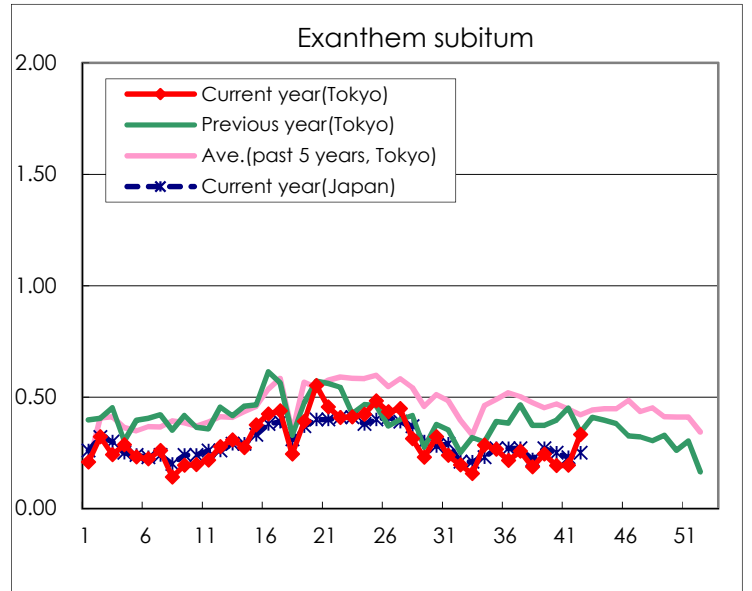
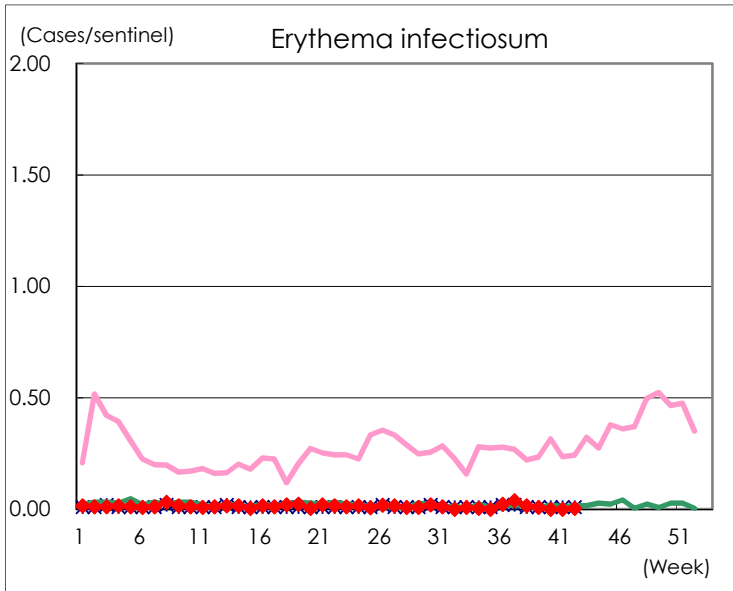
Number of patients with the diseases to be reported  
by the designated clinics and hospitals

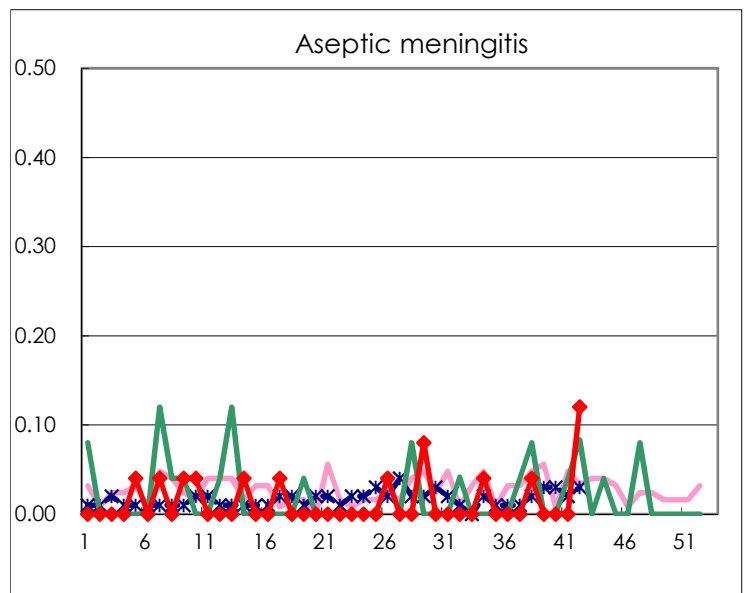
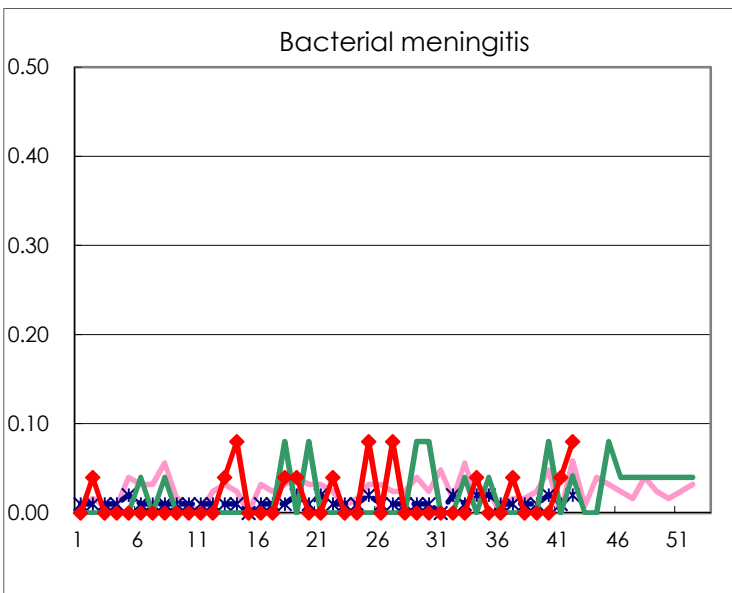
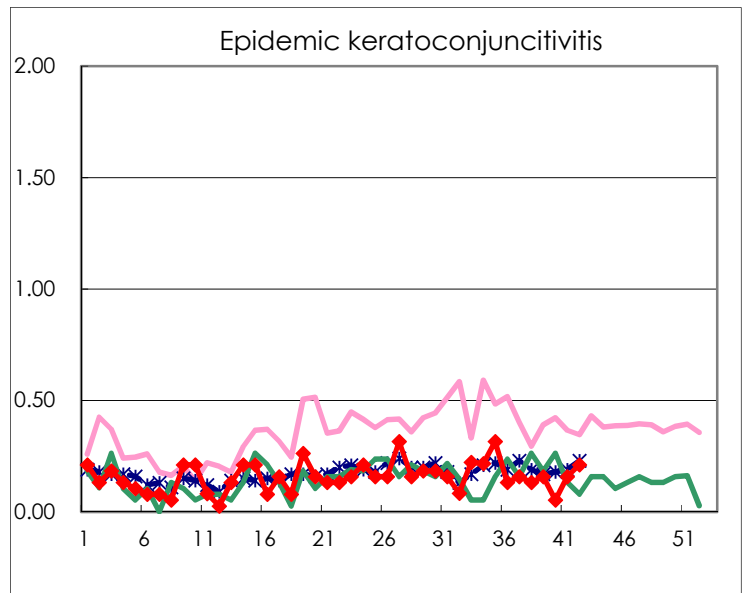
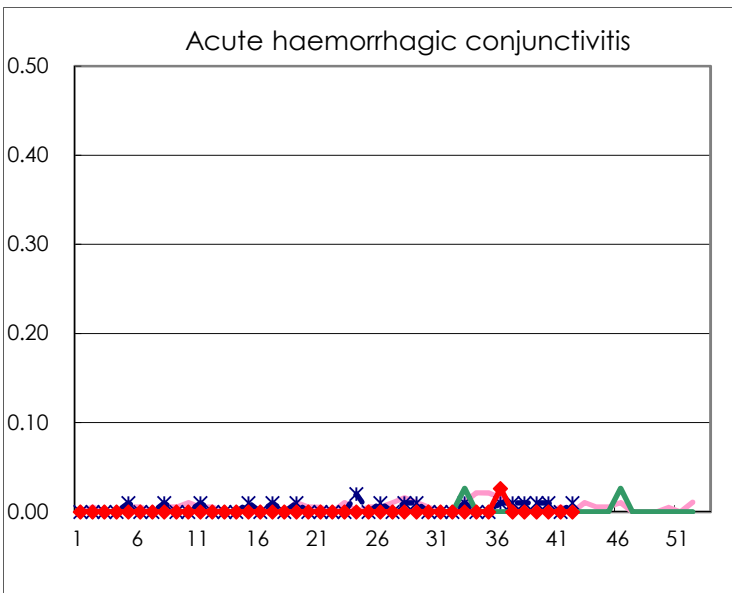
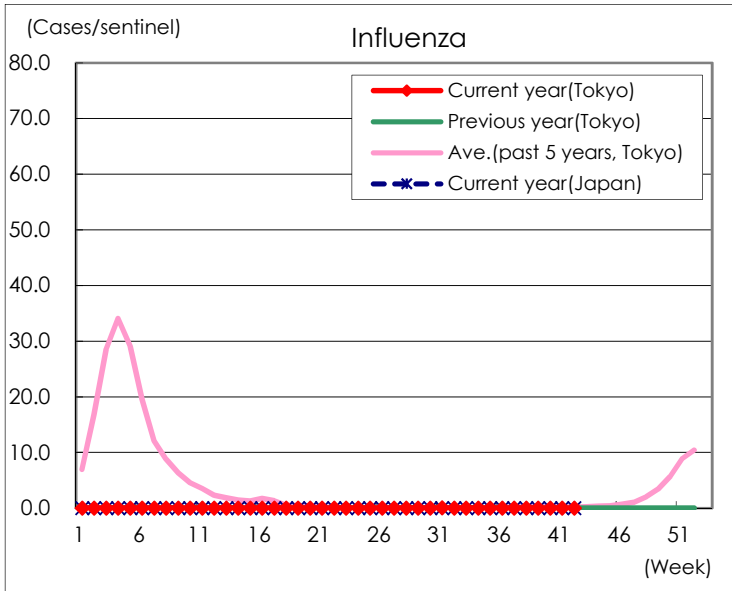
Diseases	Tokyo				
	39th	40th	41st	42nd	/sentinel
Respiratory syncytial virus infection	340	299	228	238	0.92
Pharyngoconjunctival fever	9	11	12	21	0.08
Group A streptococcal pharyngitis	55	36	29	37	0.14
Infectious gastroenteritis	587	633	676	806	3.11
Chickenpox	13	19	10	22	0.08
Hand, foot, and mouth disease	765	517	339	356	1.37
Erythema infectiosum	2			1	0.00
Exanthem subitum	63	50	50	86	0.33
Herpangina	179	96	76	98	0.38
Mumps	14	7	6	10	0.04
Kawasaki disease	3	3	3	3	0.01
Cold with exanthems	9	11	4	8	0.03
Influenza	5	2	2	2	0.00
Acute hemorrhagic conjunctivitis					
Epidemic keratoconjunctivitis	6	2	6	8	0.21
Bacterial meningitis			1	2	0.08
Aseptic meningitis				3	0.12
Mycoplasma pneumonia	1				
Chlamydial pneumonia (excluding psittacosis)		1			
Infectious gastroenteritis (only by Rotavirus)					
Influenza-Associated Hospitalizations			1	1	0.04

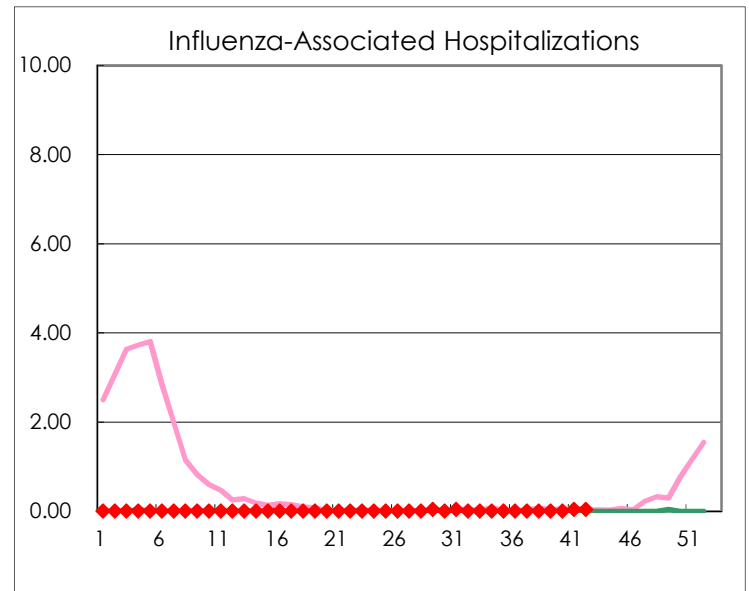
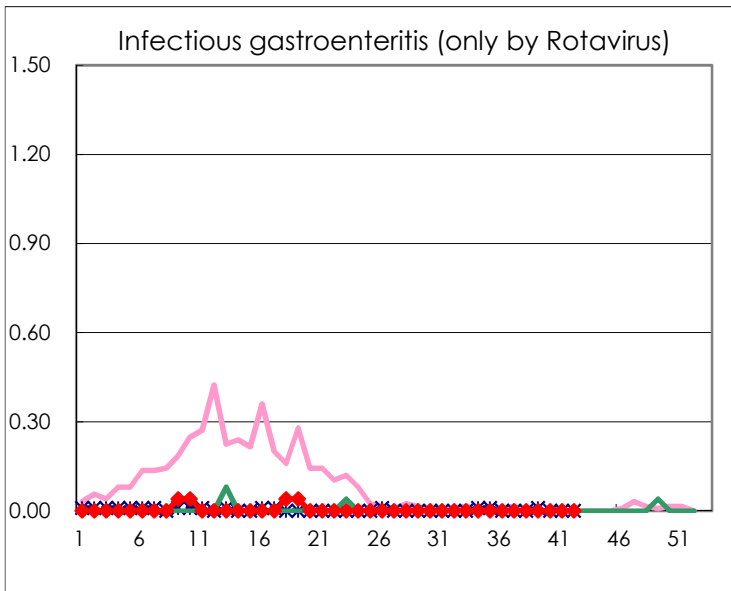
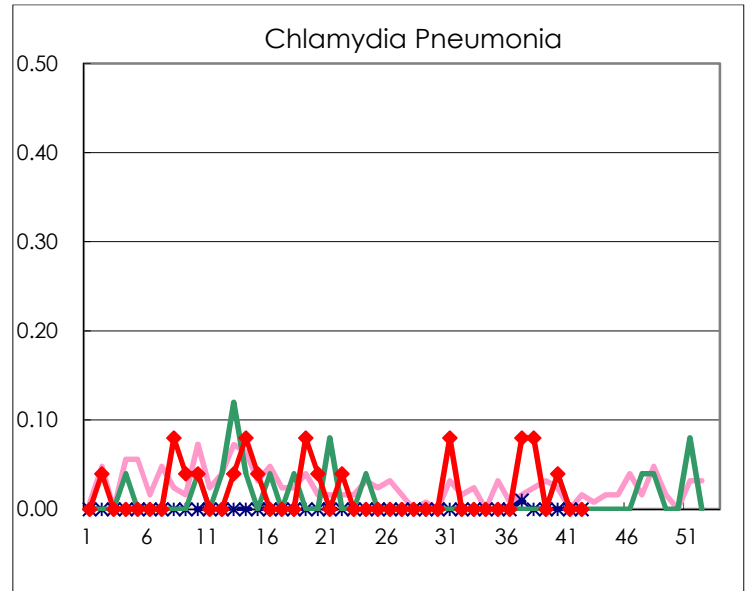
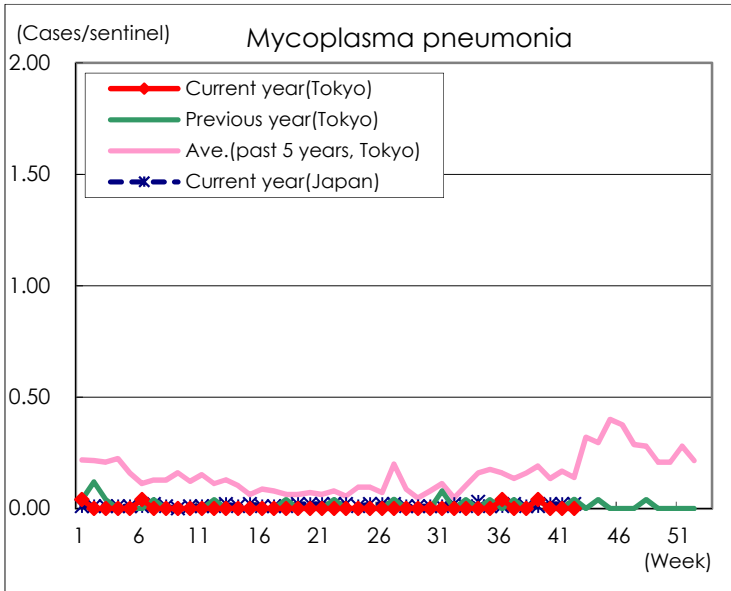
( Blank means 0. )

# Disease Trend Graph (weekly reported cases per sentinel in comparison)









Number of sentinel facilities for weekly reporting		
Types of sentinels	Number of sentinels	Sentinels having reported
Pediatric	264	259
Influenza	419	412
Ophthalmic	39	38
Specially-designated	25	25