
INFECTIOUS DISEASES WEEKLY REPORT

TOKYO IDWR

Tokyo Metropolitan Infectious Disease Surveillance Center

10 November 2022 / Number 44 (10/31 ~ 11/6)

Surveillance System in Tokyo, Japan

The infectious diseases which all physicians must report
All physicians must report to health centers the incidence of the diseases which are shown at page one. Health centers electronically report the individual cases to Tokyo Metropolitan Infectious Disease Surveillance Center.

The infectious diseases required to be reported by the sentinels
The numbers of patients who visit the sentinel clinics or hospitals during a week are reported to health centers in Tokyo. And they electronically report the numbers to Tokyo Metropolitan Infectious Disease Surveillance Center. We have about 500 sentinel clinics and hospitals in Tokyo.

Tokyo Metropolitan Institute of Public Health

TEL:81-3-3363-3213 FAX:81-3-5332-7365

e-mail:tmiph@section.metro.tokyo.jp

URL:idsc.tmiph.metro.tokyo.lg.jp/

Number of patients with the diseases which all physicians must report

Category	Diseases	Tokyo					Japan	
		41st	42nd	43rd	44th	Cum 2022	44th	Cum 2022
I	Ebola hemorrhagic fever							
	Crimean-Congo hemorrhagic fever							
	Smallpox							
	South American hemorrhagic fever							
	Plague							
	Marburg disease							
	Lassa fever							
II	Acute poliomyelitis							
	Tuberculosis	33	45	33	27	1,684	166	12,213
	Diphtheria							
	Severe Acute Respiratory Syndrome(SARS)							
	Middle East Respiratory Syndrome (MERS)							
	Avian influenza H5N1							
	Avian influenza H7N9							
III	Cholera					1		1
	Shigellosis					2		14
	Enterohemorrhagic Escherichia coli infection	4	9	6		325	37	2,994
	Typhoid fever				1	7	1	16
	Paratyphoid fever					3		8
IV	Hepatitis E	1	1	2	4	114	11	369
	West Nile fever							
	Hepatitis A					5	1	61
	Echinococcosis					3		20
	Yellow fever							
	Psittacosis					2	1	10
	Omsk hemorrhagic fever							
	Relapsing fever							20
	Kyasanur forest disease							
	Q fever							
	Rabies							
	Coccidioidomycosis							1
	Monkeypox					5		6
	Zika virus infection							
	Severe Fever with Thrombocytopenia Syndrome					1	1	113
	Hemorrhagic fever with renal syndrome							
	Western equine encephalitis							
	Tick-borne encephalitis							
	Anthrax							
	Chikungunya fever					1		5
	Scrub typhus(Tsutsugamushi disease)			1		4	14	125
	Dengue fever	1	2	4	2	21	3	84
	Eastern equine encephalitis							
	Avian influenza (excluding H5N1 and H7N9)							
	Nipah virus infection							
	Japanese spotted fever						10	426
	Japanese encephalitis							5
	Hantavirus pulmonary syndrome							
	Herpes B virus infection							
	Glanders							
	Brucellosis							1
	Venezuelan equine encephalitis							
	Hendra virus infection							
Epidemic typhus								
Botulism					1		1	
Malaria					6	1	25	
Tularemia								
Lyme disease					2		13	
Lyssavirus infection(excluding rabies)								
Rift valley fever								
Melioidosis							2	
Legionellosis	1	2	4	2	100	25	1,908	
Leptospirosis					4		36	
Rocky mountain spotted fever								

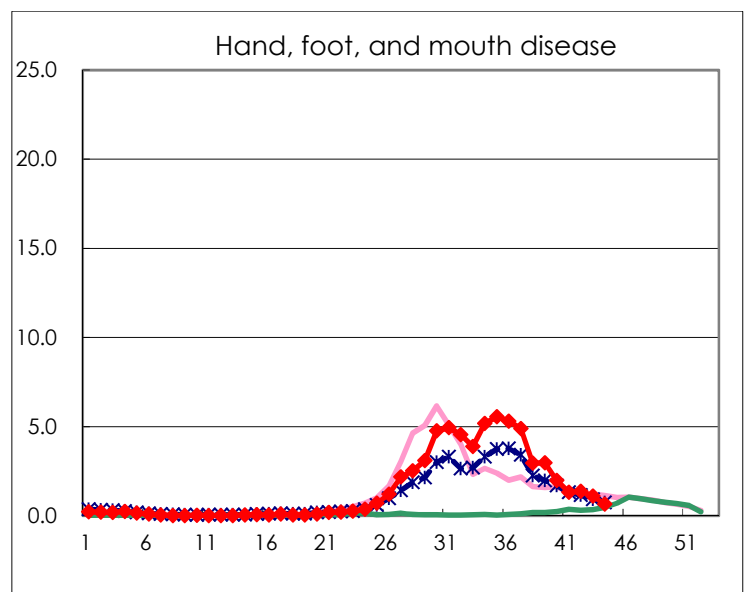
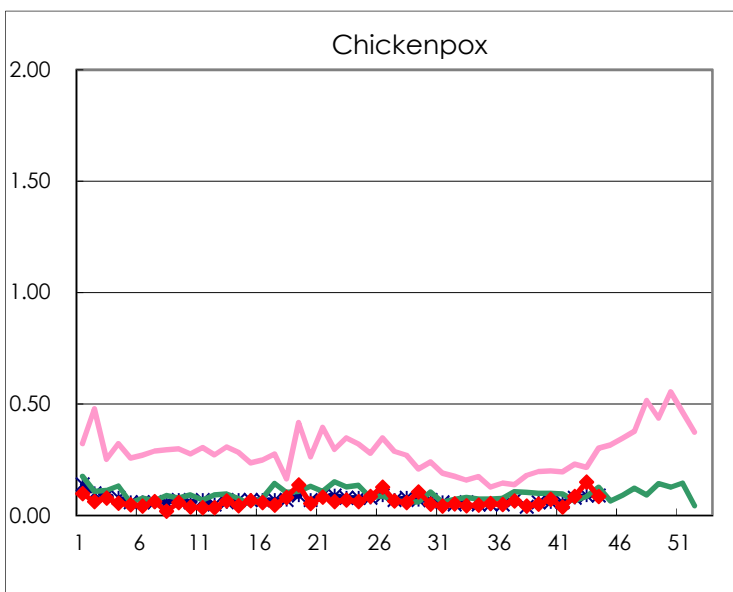
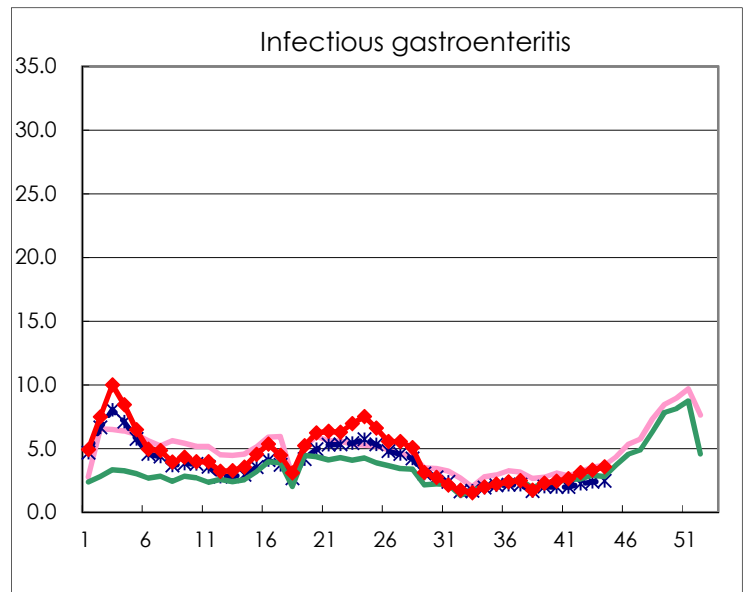
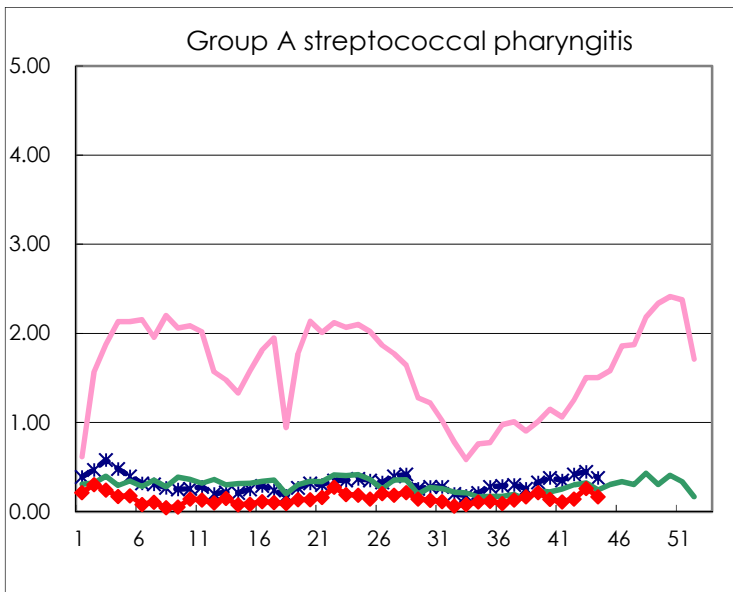
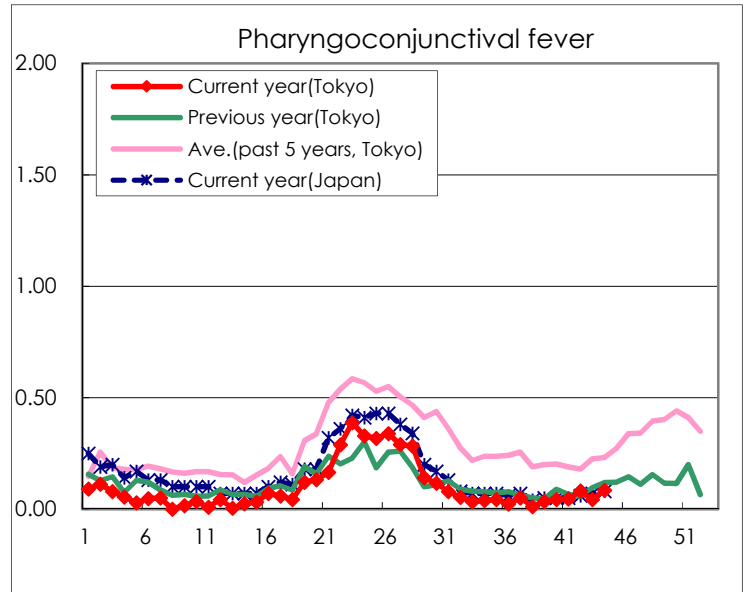
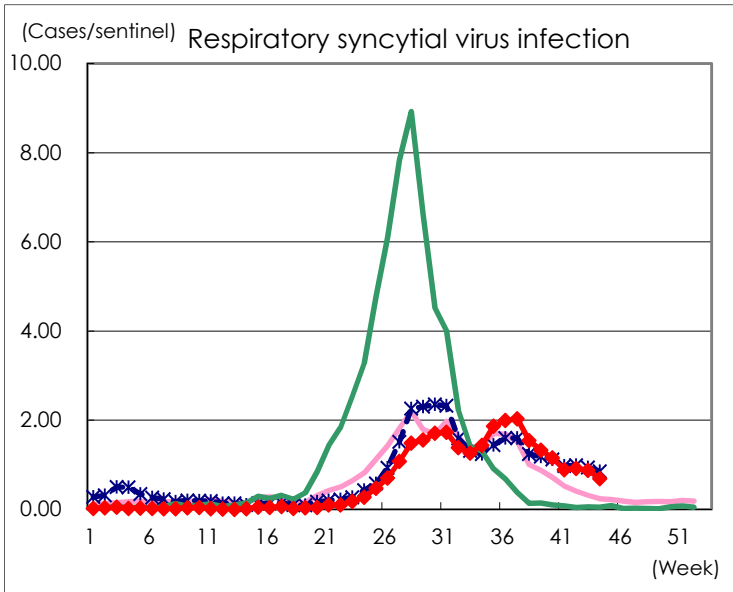
Category	Diseases	Tokyo					Japan	
		41st	42nd	43rd	44th	Cum 2022	44th	Cum 2022
V	Amebiasis	1	1	1	2	104	5	451
	Viral hepatitis(excluding hepatitis A and E)	1		1		30	3	168
	CRE infection	3	2	6	1	172	27	1,627
	Acute Flaccid Paralysis (excluding Acute poliomyelitis)		2	1		4		28
	Acute encephalitis(excluding JE and WNE)					27	5	321
	Cryptosporidiosis					2		6
	Creutzfeldt-Jakob disease				1	17	1	144
	Severe invasive streptococcal infections(TSLS)	1	2	3	2	89	8	611
	Acquired immunodeficiency syndrome (AIDS)	5	3	6	4	234	6	735
	Giardiasis					11		31
	Invasive <i>Haemophilus influenzae</i> disease		1			15	1	152
	Invasive meningococcal disease							5
	Invasive pneumococcal disease	1	2	1	3	113	32	1,044
	Varicella (limited to hospitalized case)		2	2	1	42	3	267
	Congenital rubella syndrome							
	Syphilis	77	92	69	71	3,060	158	10,744
	Disseminated cryptococcosis					13	2	125
	Tetanus					4		87
	Vancomycin-resistant <i>S. aureus</i> infection							
	Vancomycin-resistant <i>Enterococcus</i> infection					5		123
	Pertussis	1			1	43	6	401
Rubella					2	1	12	
Measles							6	
MDRA infection					2		11	

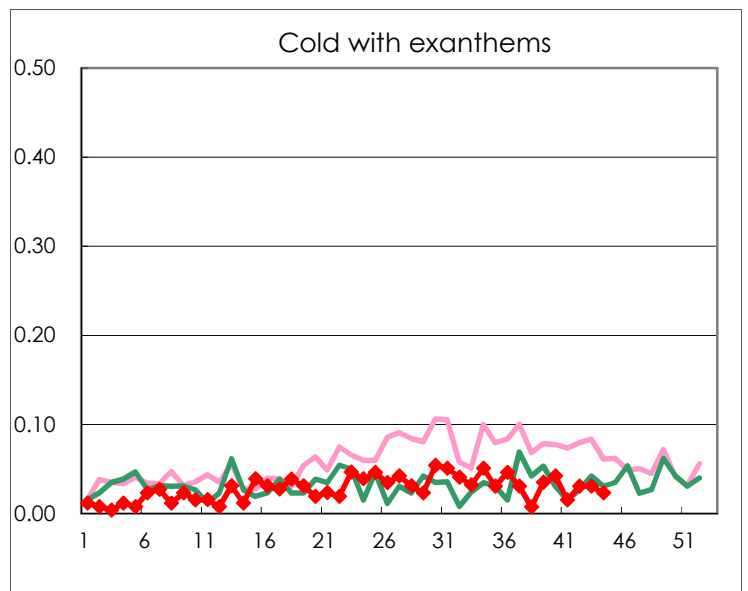
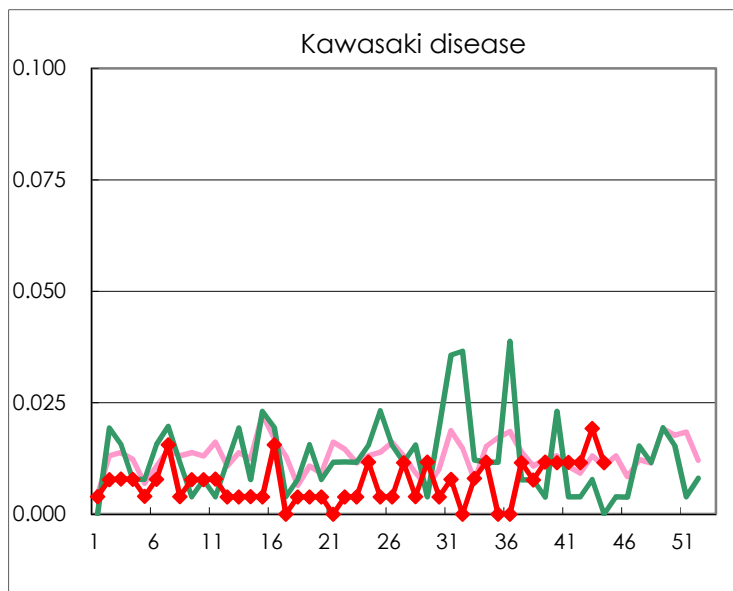
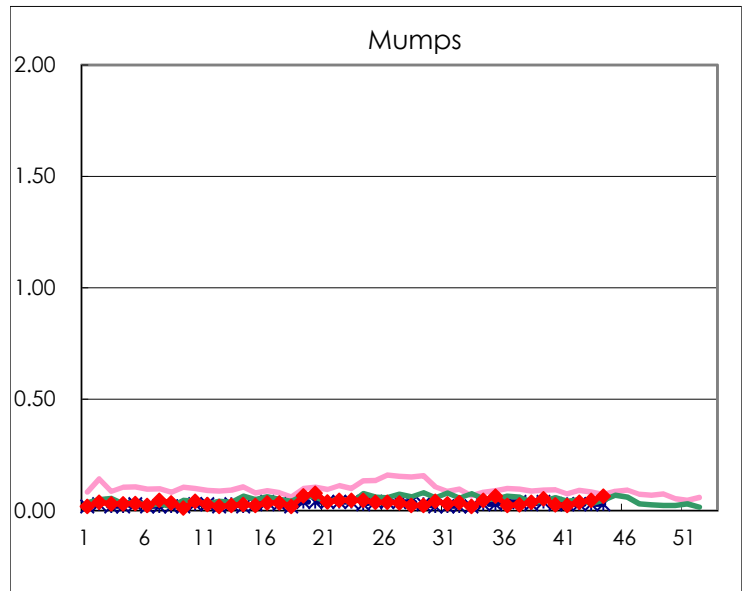
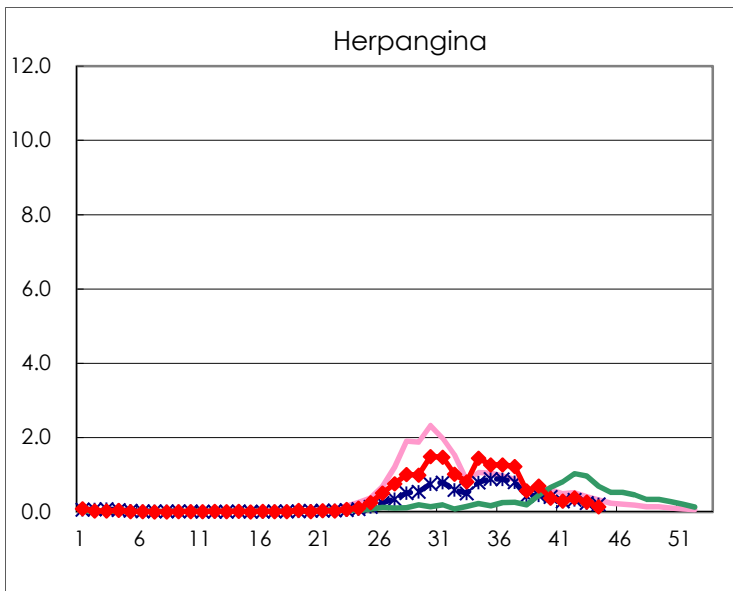
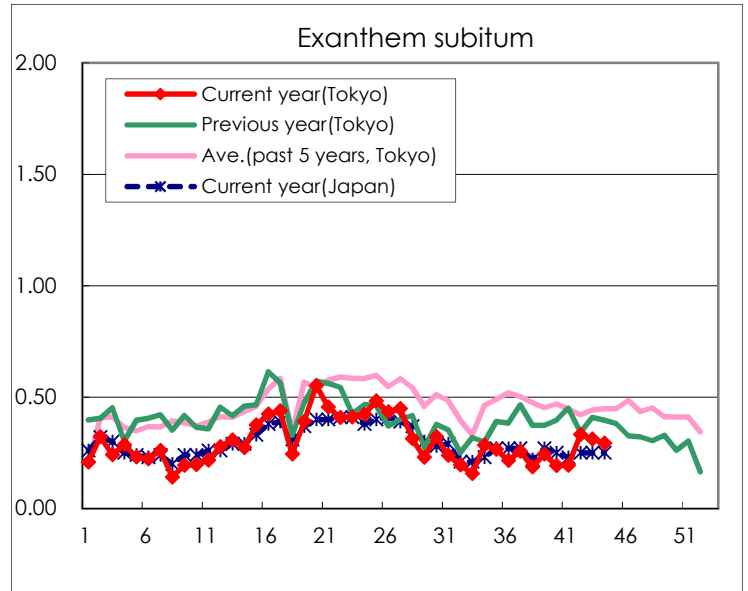
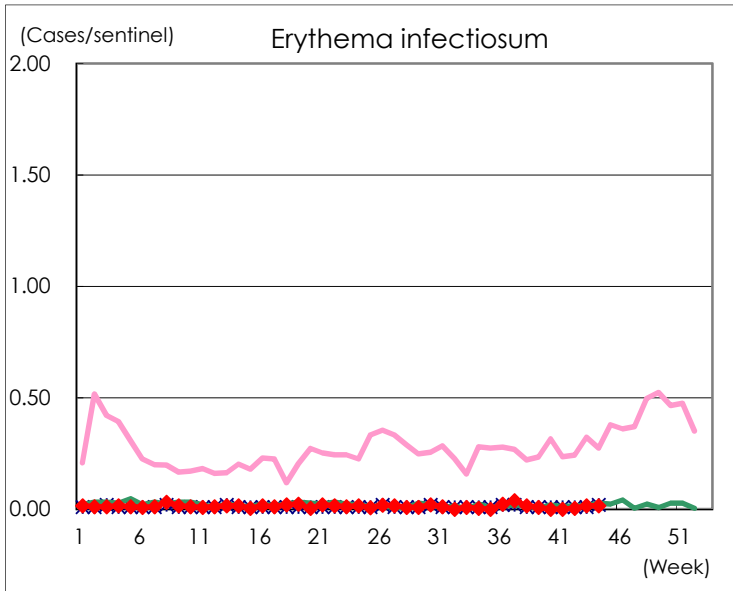
Number of patients with the diseases to be reported
by the designated clinics and hospitals

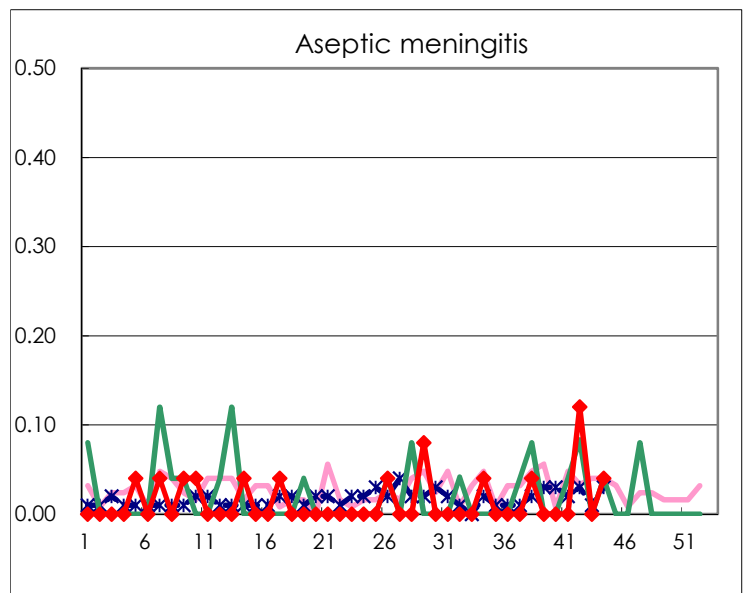
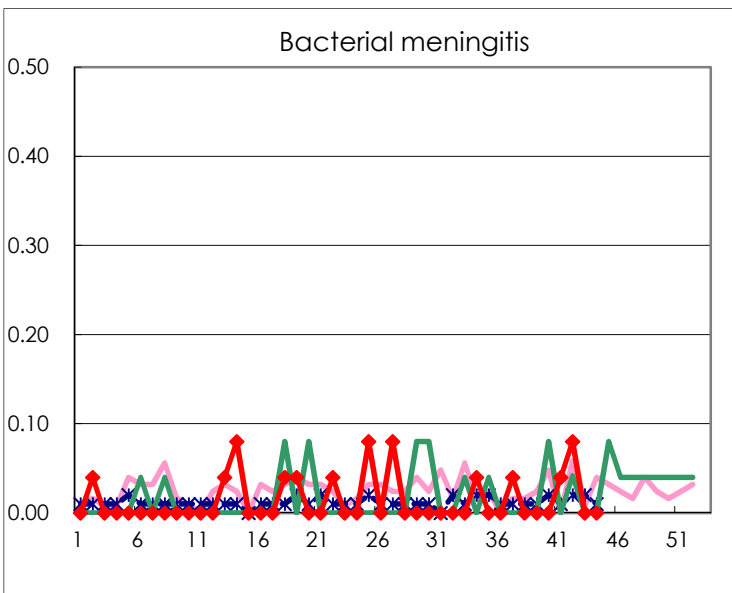
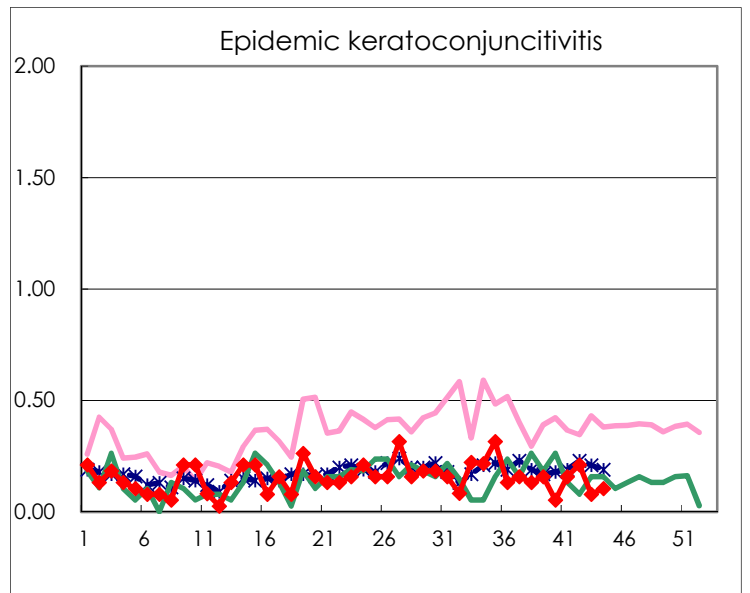
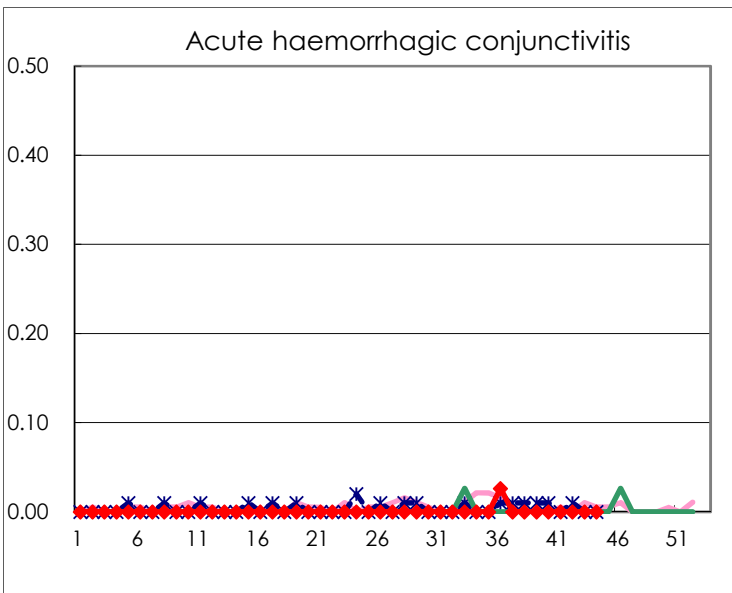
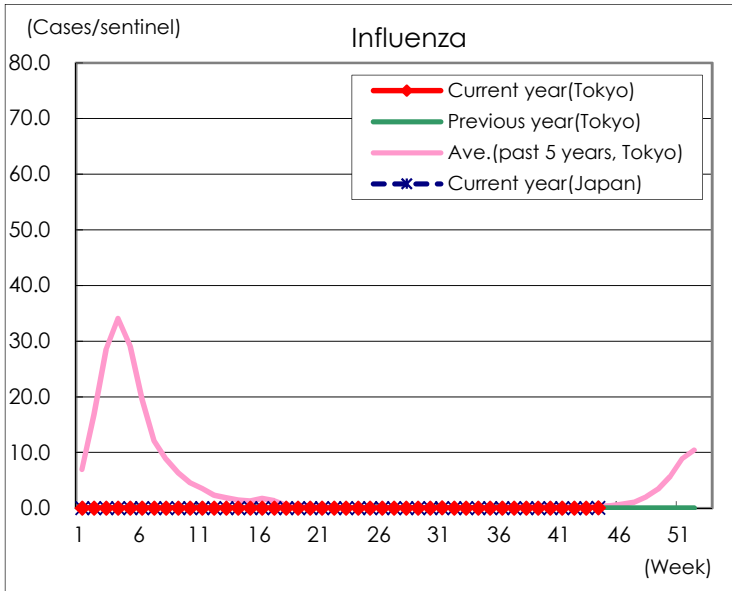
Diseases	Tokyo				
	41st	42nd	43rd	44th	/sentinel
Respiratory syncytial virus infection	228	238	227	178	0.69
Pharyngoconjunctival fever	12	21	11	22	0.08
Group A streptococcal pharyngitis	29	37	68	44	0.17
Infectious gastroenteritis	676	806	860	924	3.57
Chickenpox	10	22	39	22	0.08
Hand, foot, and mouth disease	339	356	288	170	0.66
Erythema infectiosum		1	4	4	0.02
Exanthem subitum	50	86	81	76	0.29
Herpangina	76	98	69	36	0.14
Mumps	6	10	12	17	0.07
Kawasaki disease	3	3	5	3	0.01
Cold with exanthems	4	8	8	6	0.02
Influenza	2	2	9	31	0.08
Acute hemorrhagic conjunctivitis					
Epidemic keratoconjunctivitis	6	8	3	4	0.11
Bacterial meningitis	1	2			
Aseptic meningitis		3		1	0.04
Mycoplasma pneumonia					
Chlamydial pneumonia (excluding psittacosis)					
Infectious gastroenteritis (only by Rotavirus)					
Influenza-Associated Hospitalizations	1	1			

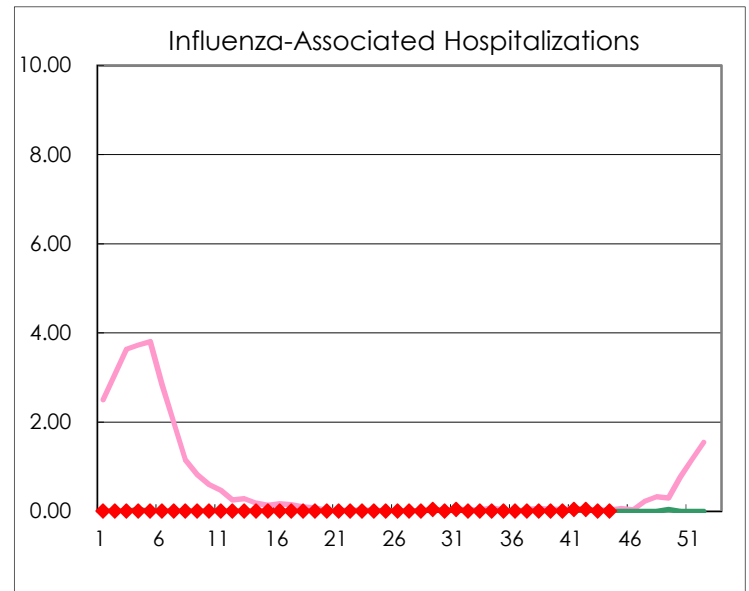
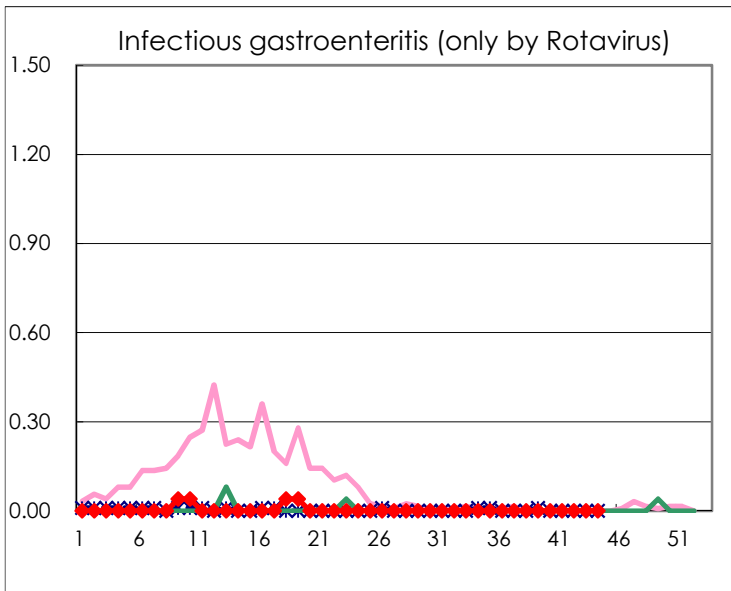
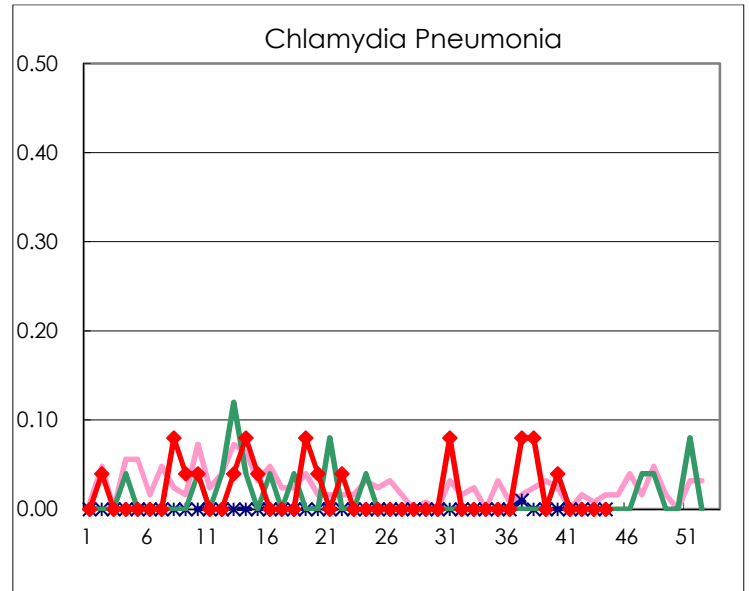
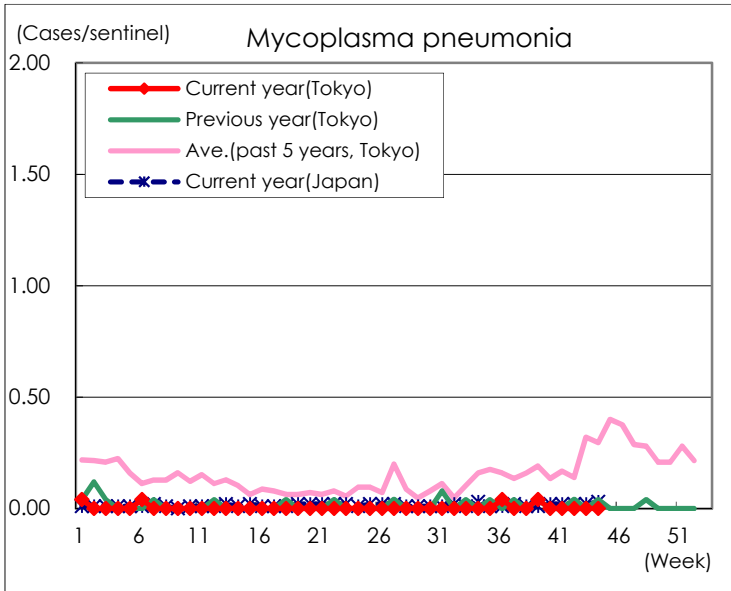
(Blank means 0.)

Disease Trend Graph (weekly reported cases per sentinel in comparison)









Number of sentinel facilities for weekly reporting		
Types of sentinels	Number of sentinels	Sentinels having reported
Pediatric	264	259
Influenza	419	410
Ophthalmic	39	38
Specially-designated	25	25