

# 17 November 2022 / Number 45

## ( 11/7 ~ 11/13 )

### Surveillance System in Tokyo, Japan

The infectious diseases which all physicians must report  
All physicians must report to health centers the incidence of the diseases which are shown at page one. Health centers electronically report the individual cases to Tokyo Metropolitan Infectious Disease Surveillance Center.

The infectious diseases required to be reported by the sentinels  
The numbers of patients who visit the sentinel clinics or hospitals during a week are reported to health centers in Tokyo. And they electronically report the numbers to Tokyo Metropolitan Infectious Disease Surveillance Center. We have about 500 sentinel clinics and hospitals in Tokyo.

Tokyo Metropolitan Institute of Public Health

TEL:81-3-3363-3213 FAX:81-3-5332-7365

e-mail:tmiph@section.metro.tokyo.jp

URL:idsc.tmiph.metro.tokyo.lg.jp/

---

Number of patients with the diseases which all physicians must report

Category	Diseases	Tokyo					Japan	
		42nd	43rd	44th	45th	Cum 2022	45th	Cum 2022
I	Ebola hemorrhagic fever							
	Crimean-Congo hemorrhagic fever							
	Smallpox							
	South American hemorrhagic fever							
	Plague							
	Marburg disease							
	Lassa fever							
II	Acute poliomyelitis							
	Tuberculosis	46	38	29	39	1,732	220	12,718
	Diphtheria							
	Severe Acute Respiratory Syndrome(SARS)							
	Middle East Respiratory Syndrome (MERS)							
	Avian influenza H5N1							
	Avian influenza H7N9							
III	Cholera					1		1
	Shigellosis					2		14
	Enterohemorrhagic Escherichia coli infection	9	6		1	326	38	3,059
	Typhoid fever			1		7		16
	Paratyphoid fever					3		8
IV	Hepatitis E	1	2	4	1	115	4	373
	West Nile fever							
	Hepatitis A					5		61
	Echinococcosis					3		20
	Yellow fever							
	Psittacosis					2		10
	Omsk hemorrhagic fever							
	Relapsing fever							20
	Kyasanur forest disease							
	Q fever							
	Rabies							
	Coccidioidomycosis							1
	Monkeypox					5		6
	Zika virus infection							
	Severe Fever with Thrombocytopenia Syndrome					1		113
	Hemorrhagic fever with renal syndrome							
	Western equine encephalitis							
	Tick-borne encephalitis							
	Anthrax							
	Chikungunya fever					1		5
	Scrub typhus(Tsutsugamushi disease)		1			4	25	152
	Dengue fever	2	4	2	3	24	5	89
	Eastern equine encephalitis							
	Avian influenza (excluding H5N1 and H7N9)							
	Nipah virus infection							
	Japanese spotted fever						6	437
	Japanese encephalitis							5
	Hantavirus pulmonary syndrome							
	Herpes B virus infection							
	Glanders							
	Brucellosis							1
	Venezuelan equine encephalitis							
	Hendra virus infection							
Epidemic typhus								
Botulism					1		1	
Malaria					6		27	
Tularemia								
Lyme disease					2		13	
Lyssavirus infection(excluding rabies)								
Rift valley fever								
Melioidosis							2	
Legionellosis	2	4	2	2	102	24	1,936	
Leptospirosis					4		36	
Rocky mountain spotted fever								

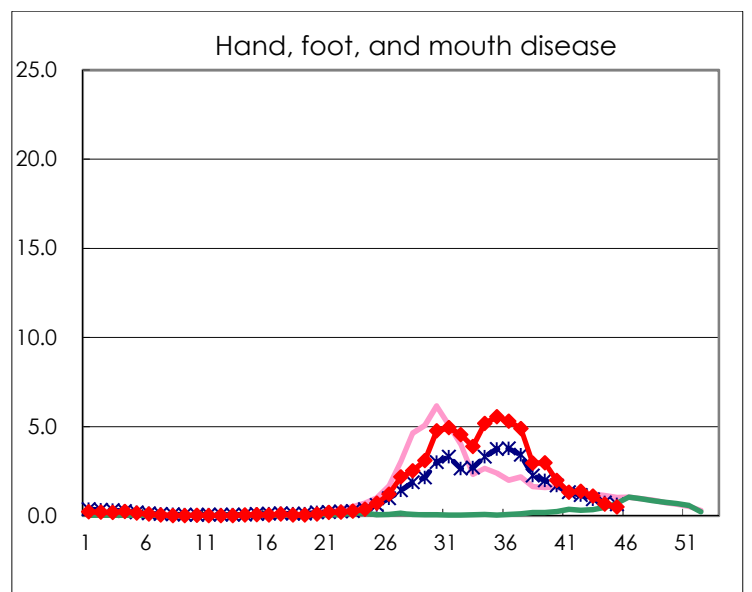
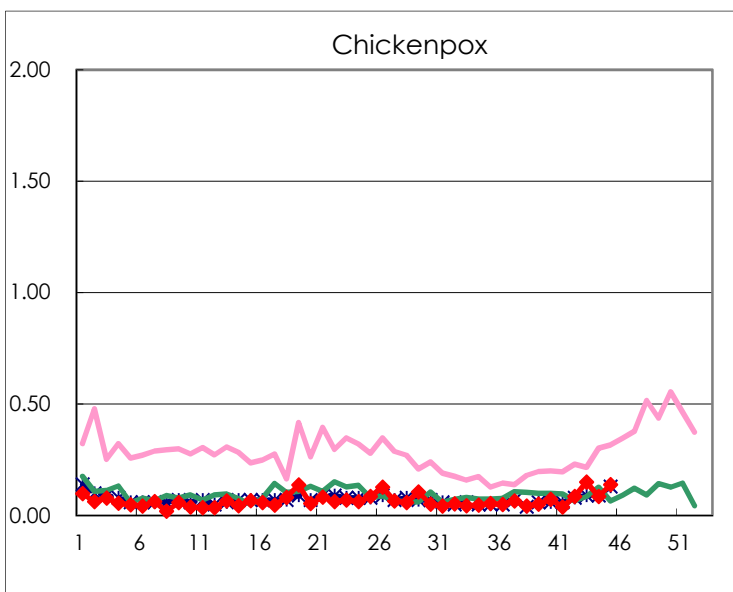
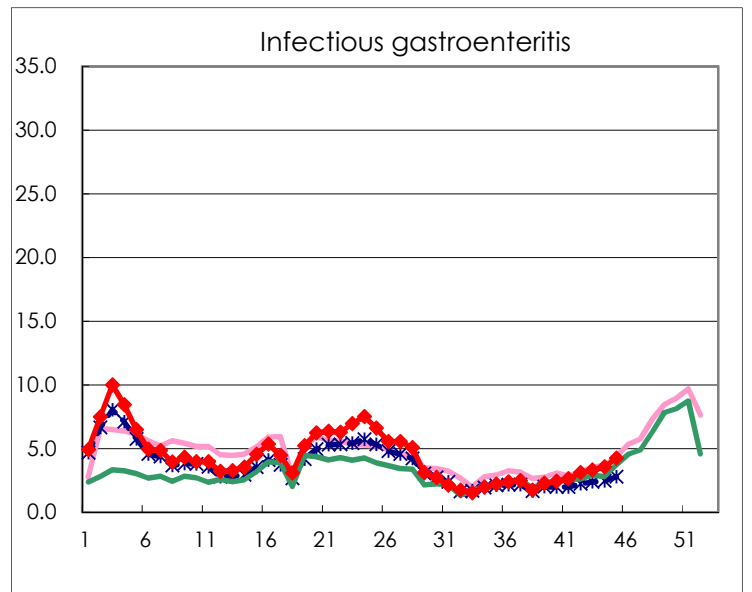
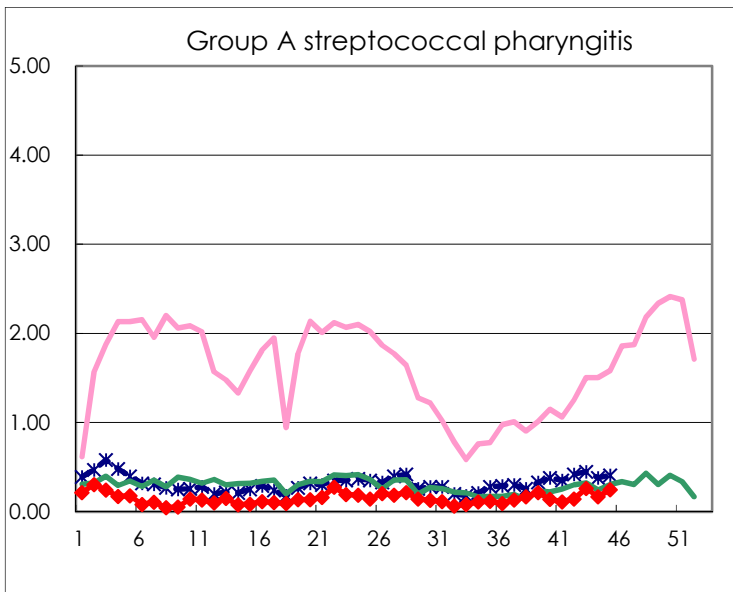
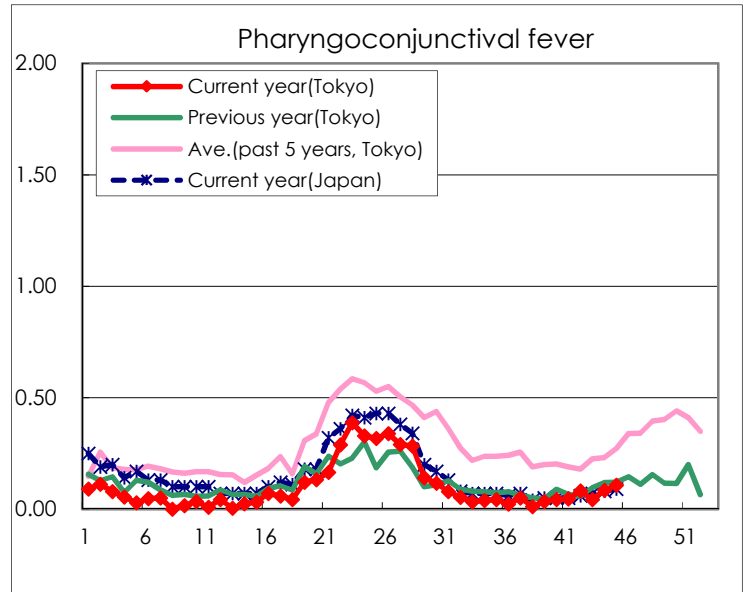
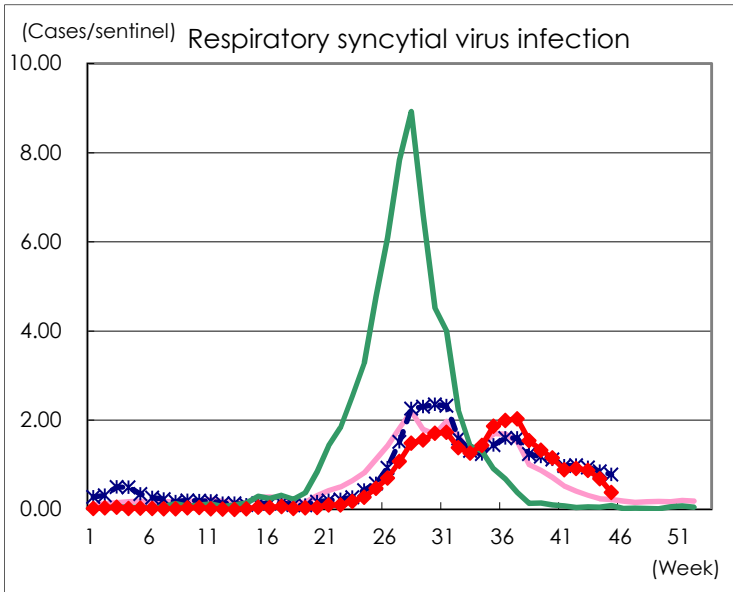
Category	Diseases	Tokyo					Japan	
		42nd	43rd	44th	45th	Cum 2022	45th	Cum 2022
V	Amebiasis	1	1	2		104	5	458
	Viral hepatitis(excluding hepatitis A and E)		1		1	31	2	170
	CRE infection	2	6	2	5	179	32	1,676
	Acute Flaccid Paralysis (excluding Acute poliomyelitis)	2	1			4	1	29
	Acute encephalitis(excluding JE and WNE)				1	28	5	328
	Cryptosporidiosis					2	1	7
	Creutzfeldt-Jakob disease			1		17	2	146
	Severe invasive streptococcal infections(TSLS)	2	3	2	2	91	8	622
	Acquired immunodeficiency syndrome (AIDS)	3	6	4	8	242	4	748
	Giardiasis					11		31
	Invasive <i>Haemophilus influenzae</i> disease	1				15	1	155
	Invasive meningococcal disease						1	6
	Invasive pneumococcal disease	2	1	4	2	116	30	1,080
	Varicella (limited to hospitalized case)	2	2	1	2	44	3	275
	Congenital rubella syndrome							
	Syphilis	92	69	75	64	3,128	191	11,018
	Disseminated cryptococcosis					13	1	127
	Tetanus					4	1	89
	Vancomycin-resistant <i>S. aureus</i> infection							
	Vancomycin-resistant <i>Enterococcus</i> infection				1	6	1	125
	Pertussis			1		43	8	413
Rubella					2	1	13	
Measles							6	
MDRA infection					2		11	

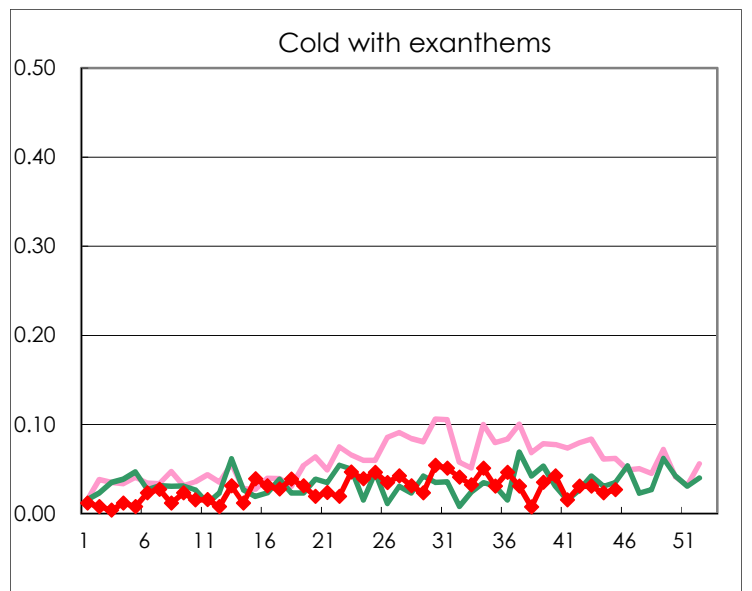
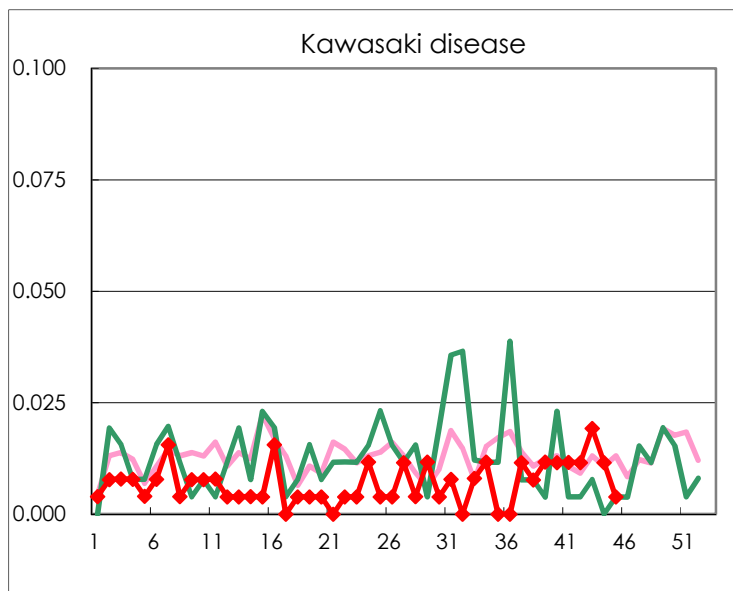
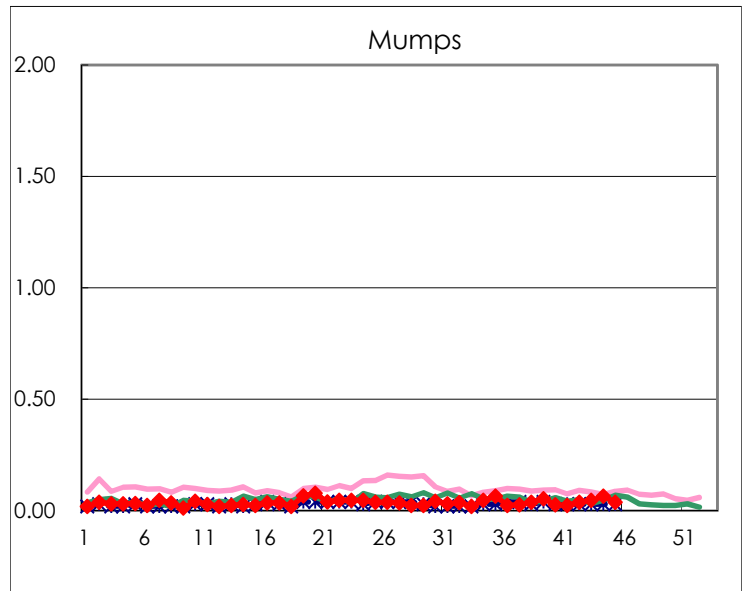
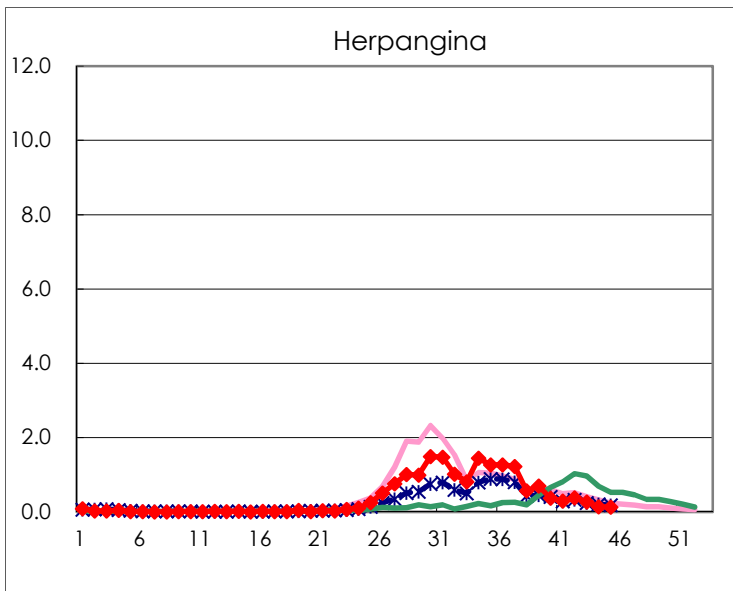
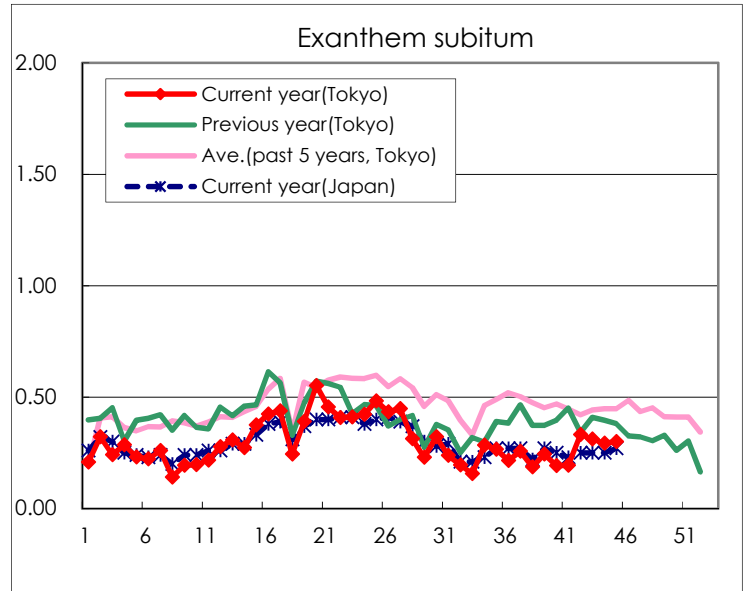
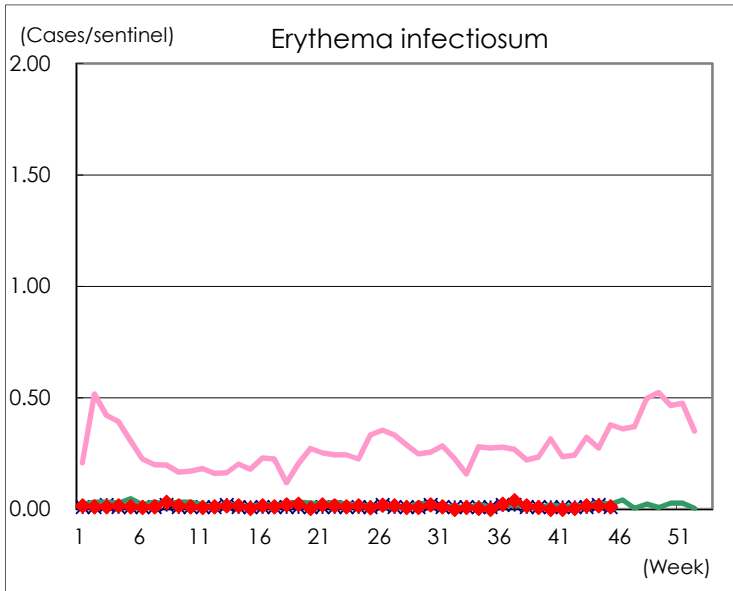
Number of patients with the diseases to be reported  
by the designated clinics and hospitals

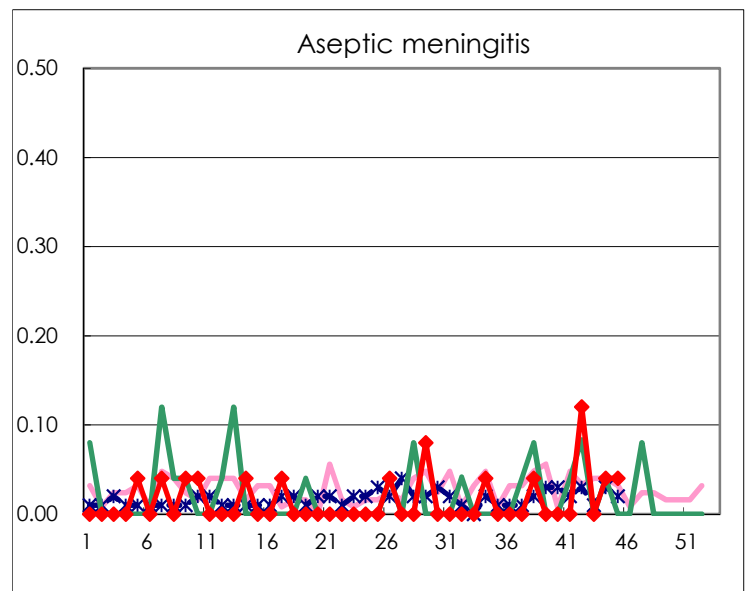
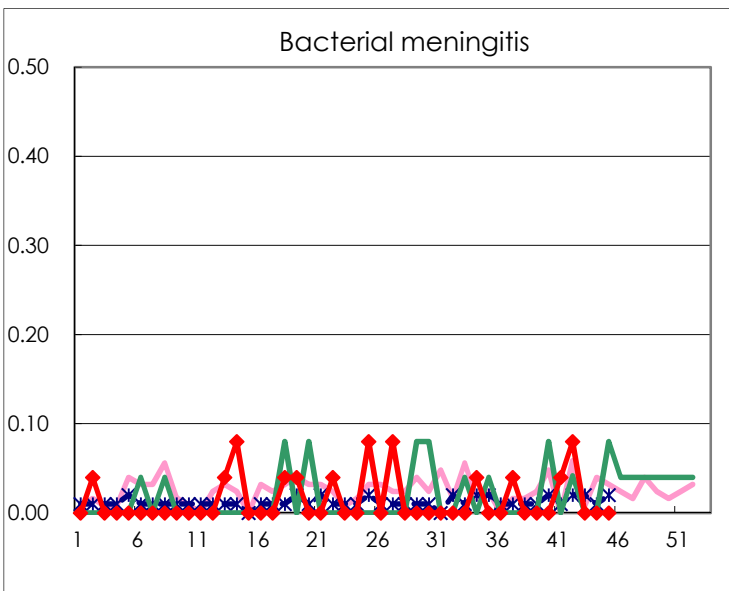
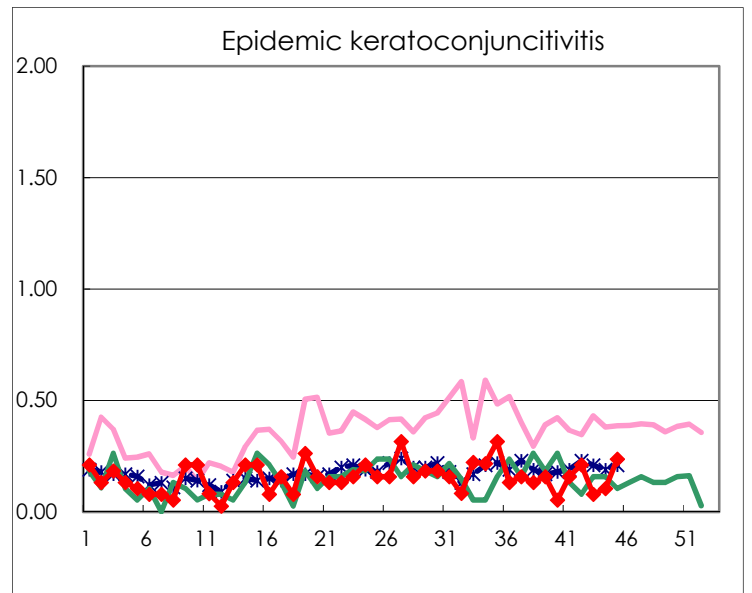
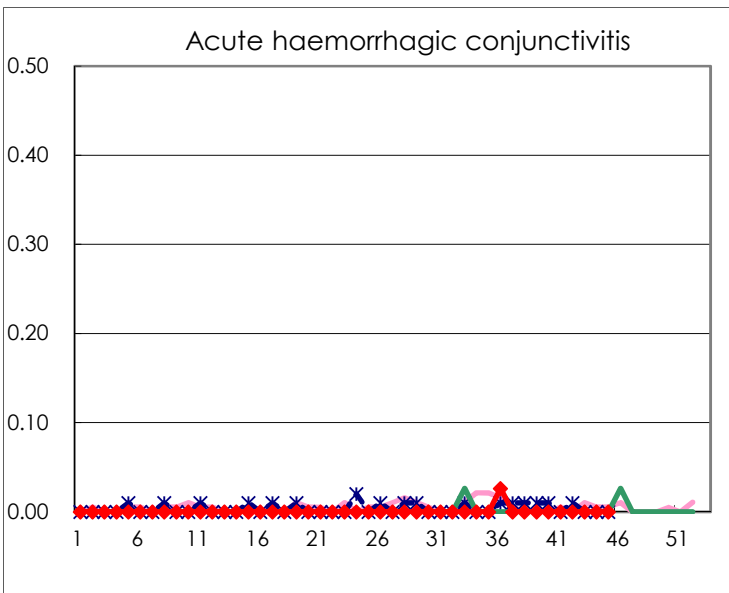
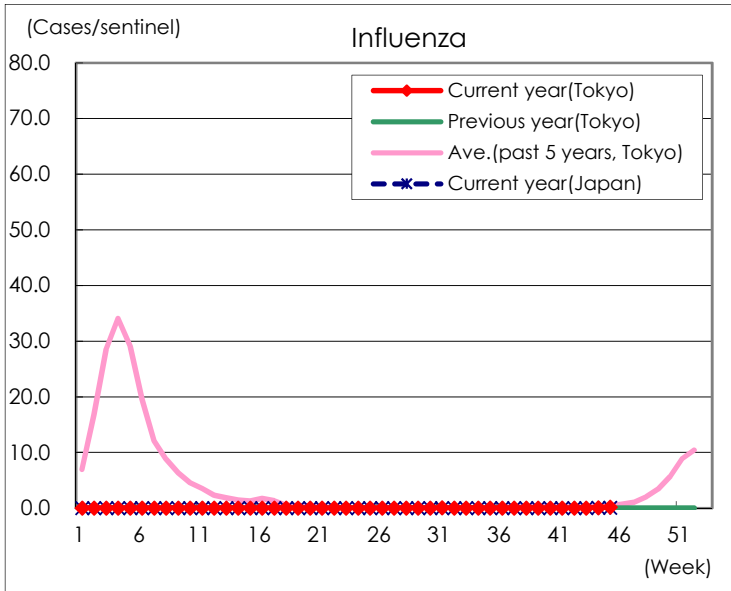
Diseases	Tokyo				
	42nd	43rd	44th	45th	/sentinel
Respiratory syncytial virus infection	238	227	178	99	0.38
Pharyngoconjunctival fever	21	11	22	28	0.11
Group A streptococcal pharyngitis	37	68	44	64	0.25
Infectious gastroenteritis	806	860	924	1,098	4.22
Chickenpox	22	39	22	36	0.14
Hand, foot, and mouth disease	356	288	170	126	0.48
Erythema infectiosum	1	4	4	3	0.01
Exanthem subitum	86	81	76	78	0.30
Herpangina	98	69	36	34	0.13
Mumps	10	12	17	10	0.04
Kawasaki disease	3	5	3	1	0.00
Cold with exanthems	8	8	6	7	0.03
Influenza	2	9	31	85	0.21
Acute hemorrhagic conjunctivitis					
Epidemic keratoconjunctivitis	8	3	4	9	0.24
Bacterial meningitis	2				
Aseptic meningitis	3		1	1	0.04
<i>Mycoplasma pneumoniae</i>					
Chlamydial pneumonia (excluding psittacosis)				1	0.04
Infectious gastroenteritis (only by Rotavirus)					
Influenza-Associated Hospitalizations	1				

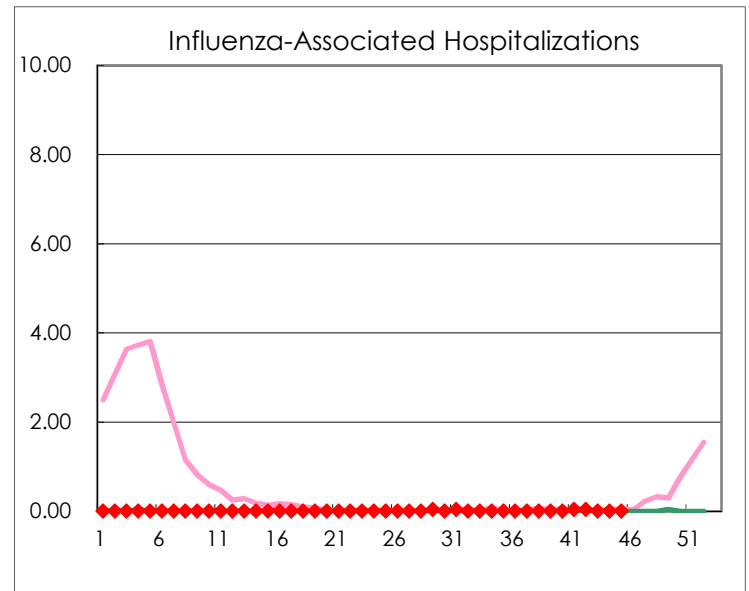
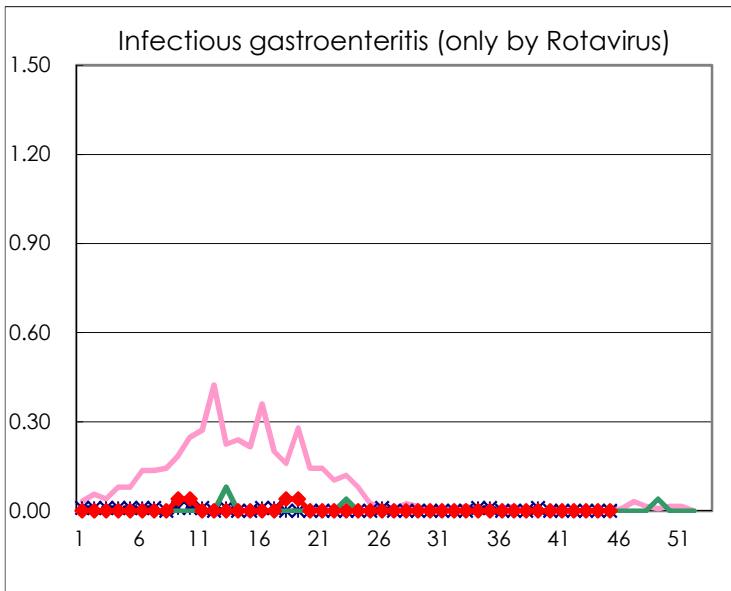
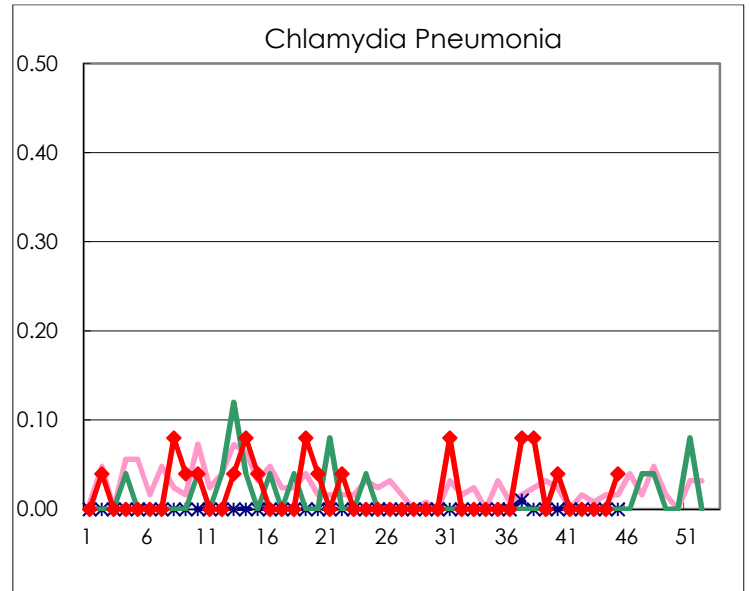
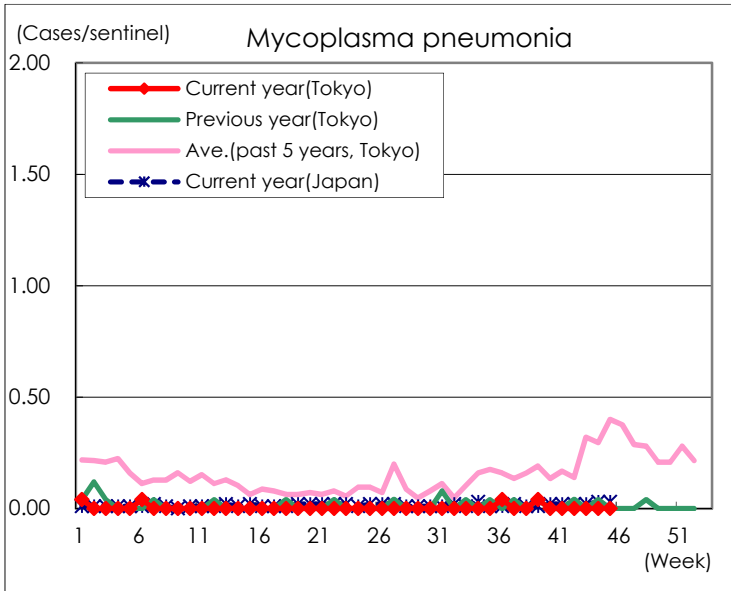
( Blank means 0. )

# Disease Trend Graph (weekly reported cases per sentinel in comparison)









Number of sentinel facilities for weekly reporting		
Types of sentinels	Number of sentinels	Sentinels having reported
Pediatric	264	260
Influenza	419	407
Ophthalmic	39	38
Specially-designated	25	25