
INFECTIOUS DISEASES WEEKLY REPORT

TOKYO IDWR

Tokyo Metropolitan Infectious Disease Surveillance Center

8 December 2022 / Number 48 (11/28 ~ 12/4)

Surveillance System in Tokyo, Japan

The infectious diseases which all physicians must report
All physicians must report to health centers the incidence of the diseases which are shown at page one. Health centers electronically report the individual cases to Tokyo Metropolitan Infectious Disease Surveillance Center.

The infectious diseases required to be reported by the sentinels
The numbers of patients who visit the sentinel clinics or hospitals during a week are reported to health centers in Tokyo. And they electronically report the numbers to Tokyo Metropolitan Infectious Disease Surveillance Center. We have about 500 sentinel clinics and hospitals in Tokyo.

Tokyo Metropolitan Institute of Public Health

TEL:81-3-3363-3213 FAX:81-3-5332-7365

e-mail:tmiph@section.metro.tokyo.jp

URL:idsctmiph.metro.tokyo.lg.jp/

Number of patients with the diseases which all physicians must report

Category	Diseases	Tokyo					Japan	
		45th	46th	47th	48th	Cum 2022	48th	Cum 2022
I	Ebola hemorrhagic fever							
	Crimean-Congo hemorrhagic fever							
	Smallpox							
	South American hemorrhagic fever							
	Plague							
	Marburg disease							
	Lassa fever							
II	Acute poliomyelitis							
	Tuberculosis	41	54	30	27	1,844	213	13,555
	Diphtheria							
	Severe Acute Respiratory Syndrome(SARS)							
	Middle East Respiratory Syndrome (MERS)							
	Avian influenza H5N1							
	Avian influenza H7N9							
III	Cholera					1		1
	Shigellosis					2		14
	Enterohemorrhagic Escherichia coli infection	1	3	5	5	339	39	3,183
	Typhoid fever					7		16
	Paratyphoid fever					3		8
IV	Hepatitis E	1			3	118	5	390
	West Nile fever							
	Hepatitis A					5	1	63
	Echinococcosis					3	1	22
	Yellow fever							
	Psittacosis			1		3		11
	Omsk hemorrhagic fever							
	Relapsing fever							20
	Kyasanur forest disease							
	Q fever							
	Rabies							
	Coccidioidomycosis							2
	Monkeypox					5		6
	Zika virus infection							
	Severe Fever with Thrombocytopenia Syndrome					1		117
	Hemorrhagic fever with renal syndrome							
	Western equine encephalitis							
	Tick-borne encephalitis							
	Anthrax							
	Chikungunya fever					1		5
	Scrub typhus(Tsutsugamushi disease)			2	3	9	38	286
	Dengue fever	3			1	25	1	93
	Eastern equine encephalitis							
	Avian influenza (excluding H5N1 and H7N9)							
	Nipah virus infection							
	Japanese spotted fever						4	454
	Japanese encephalitis							5
	Hantavirus pulmonary syndrome							
	Herpes B virus infection							
	Glanders							
	Brucellosis							1
	Venezuelan equine encephalitis							
	Hendra virus infection							
Epidemic typhus								
Botulism					1		1	
Malaria			1	2	9	2	30	
Tularemia								
Lyme disease					2		13	
Lyssavirus infection(excluding rabies)								
Rift valley fever								
Melioidosis							2	
Legionellosis	2	7	3		112	22	2,023	
Leptospirosis					4		36	
Rocky mountain spotted fever								

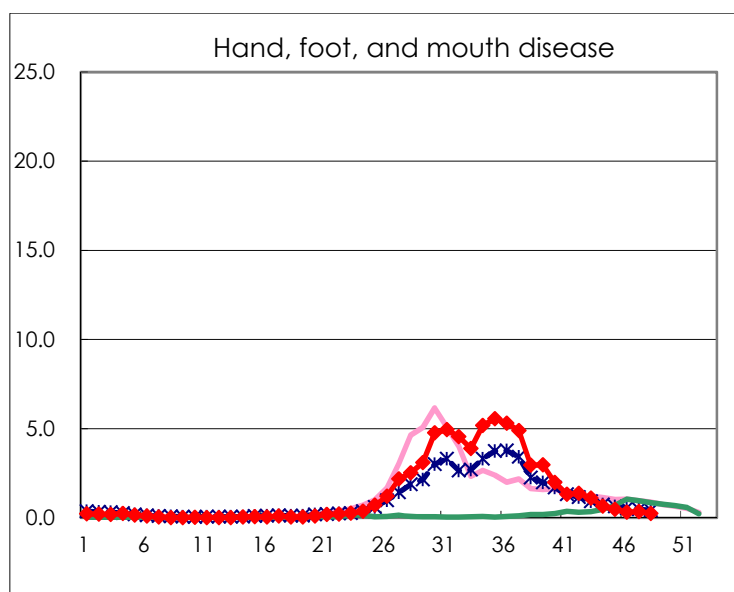
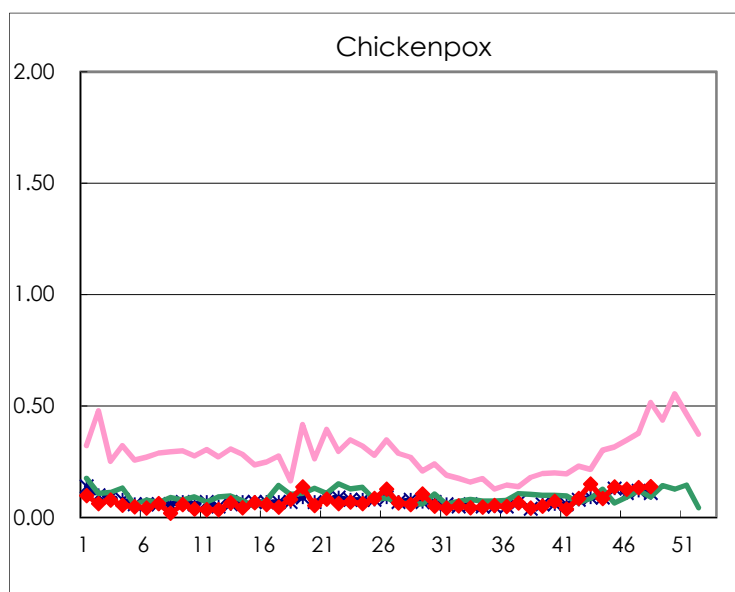
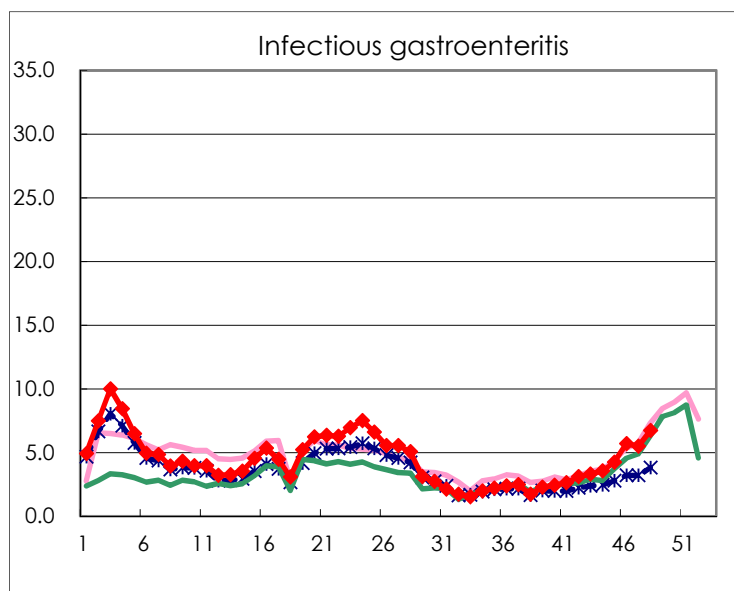
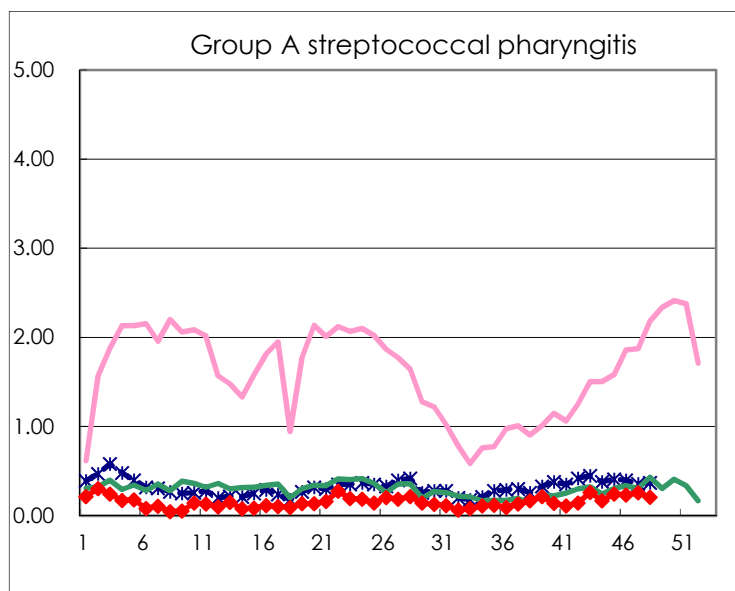
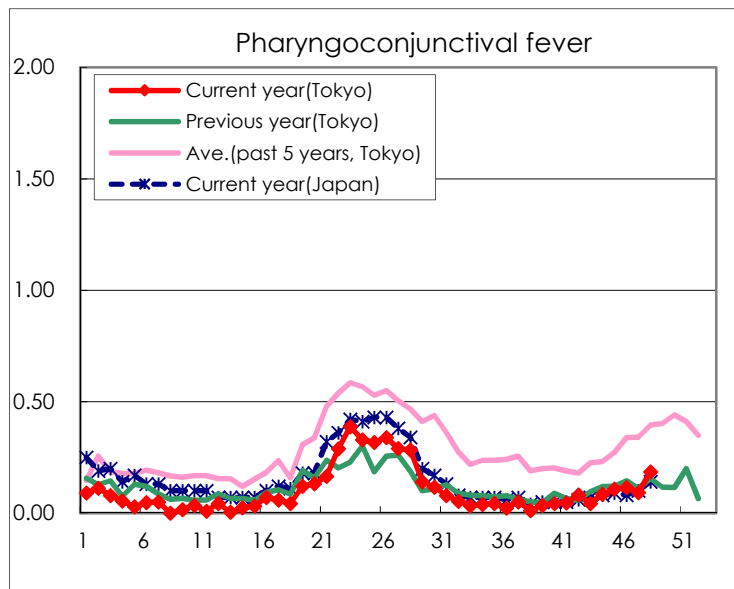
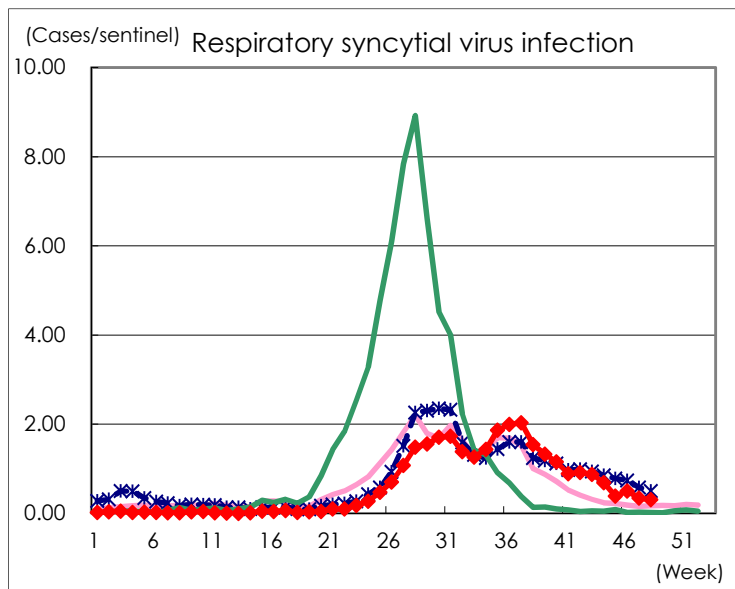
Category	Diseases	Tokyo					Japan	
		45th	46th	47th	48th	Cum 2022	48th	Cum 2022
V	Amebiasis		1	2		107	6	484
	Viral hepatitis(excluding hepatitis A and E)	1	1			32	4	192
	CRE infection	7	2	4	4	192	34	1,815
	Acute Flaccid Paralysis (excluding Acute poliomyelitis)					4		34
	Acute encephalitis(excluding JE and WNE)	1				28	3	357
	Cryptosporidiosis					2		7
	Creutzfeldt-Jakob disease				1	18	3	159
	Severe invasive streptococcal infections(TSLS)	2	1	5	2	99	8	677
	Acquired immunodeficiency syndrome (AIDS)	8	8	3	2	255	11	797
	Giardiasis		1			12		32
	Invasive <i>Haemophilus influenzae</i> disease		1			16	7	176
	Invasive meningococcal disease		1			1	1	8
	Invasive pneumococcal disease	2	4	1	5	126	27	1,179
	Varicella (limited to hospitalized case)	2		1	1	46	3	299
	Congenital rubella syndrome							
	Syphilis	80	77	71	60	3,352	151	11,917
	Disseminated cryptococcosis			1		14	2	140
	Tetanus			1	1	6	1	94
	Vancomycin-resistant <i>S. aureus</i> infection							
	Vancomycin-resistant <i>Enterococcus</i> infection	1				6		127
	Pertussis		1	4	5	53	15	464
	Rubella					3	1	14
Measles							6	
MDRA infection					2	1	14	

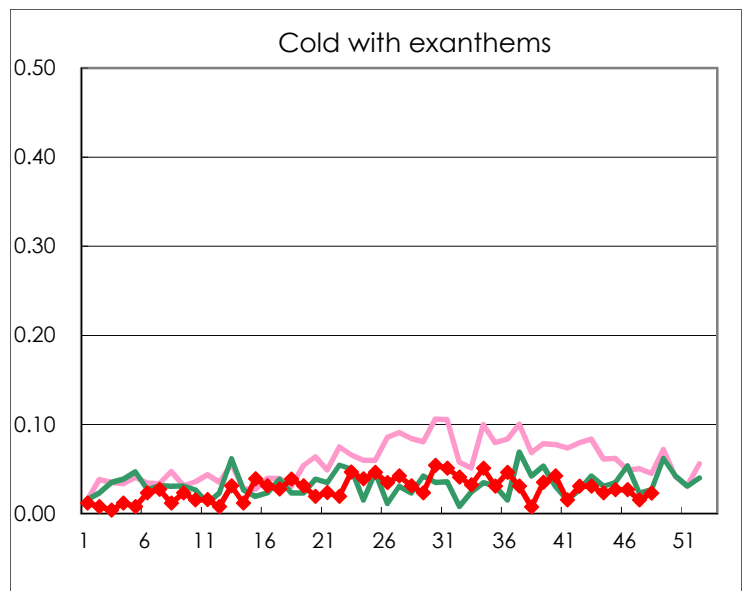
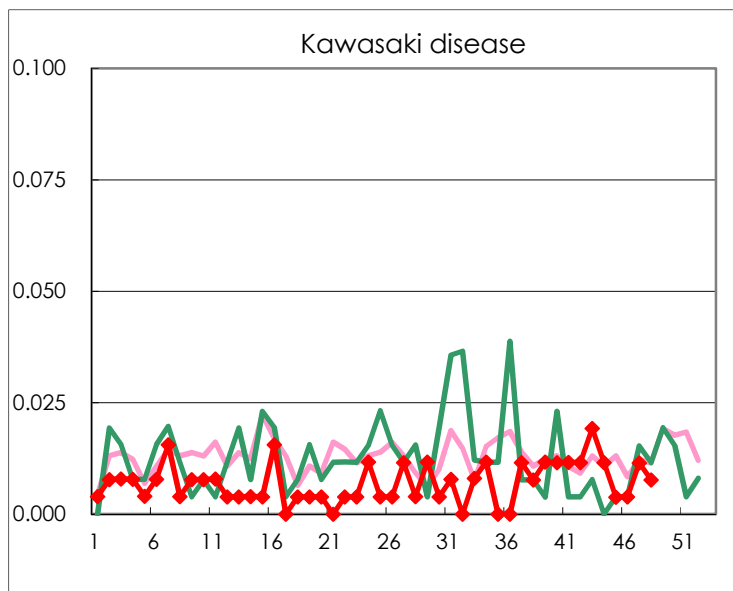
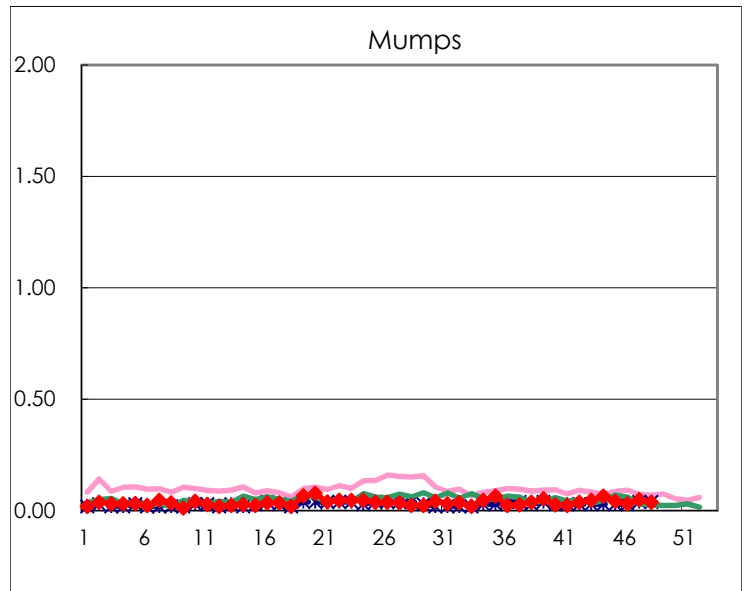
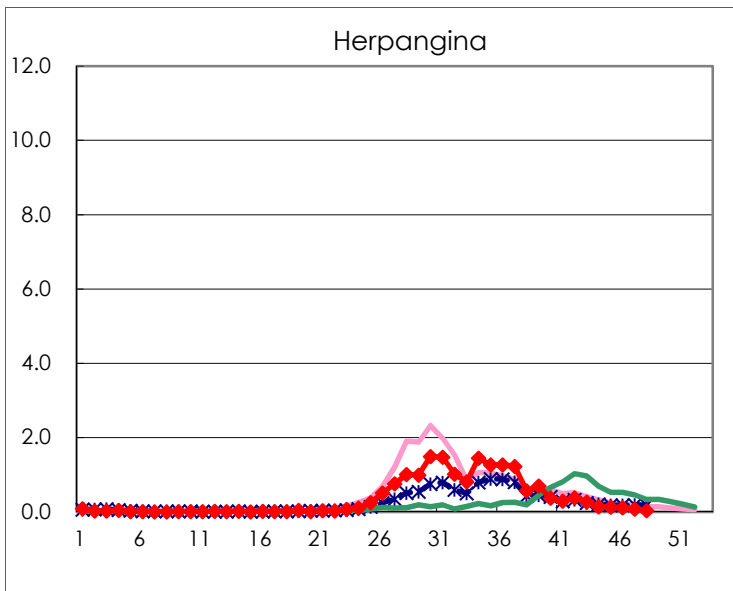
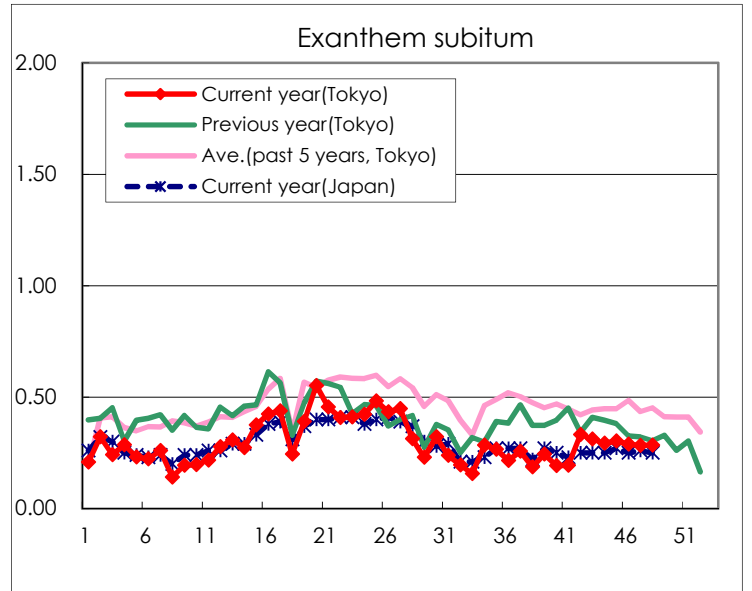
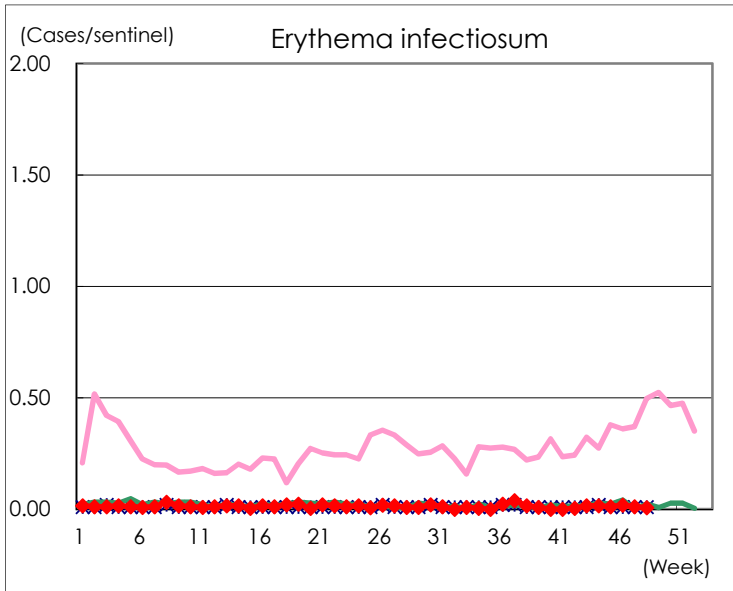
Number of patients with the diseases to be reported
by the designated clinics and hospitals

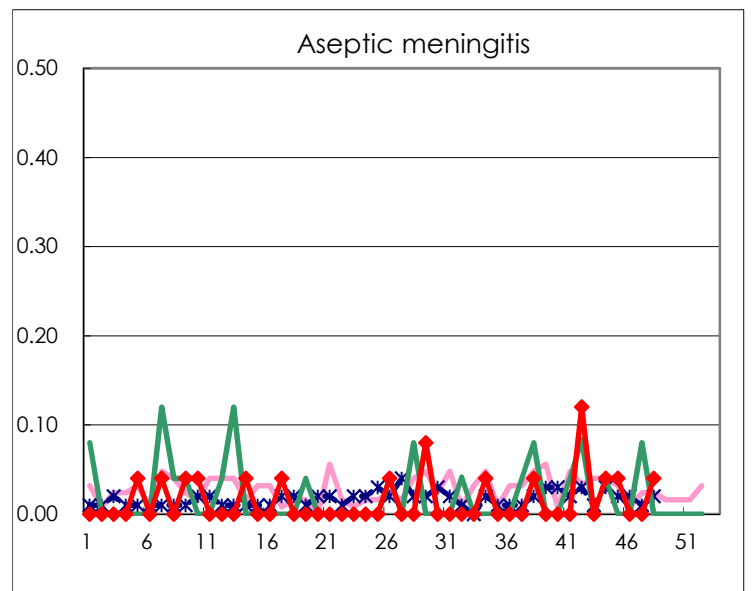
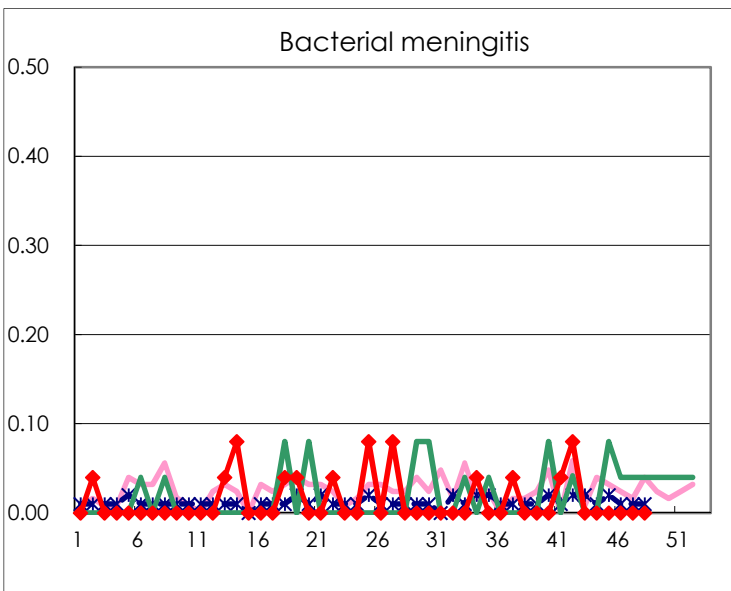
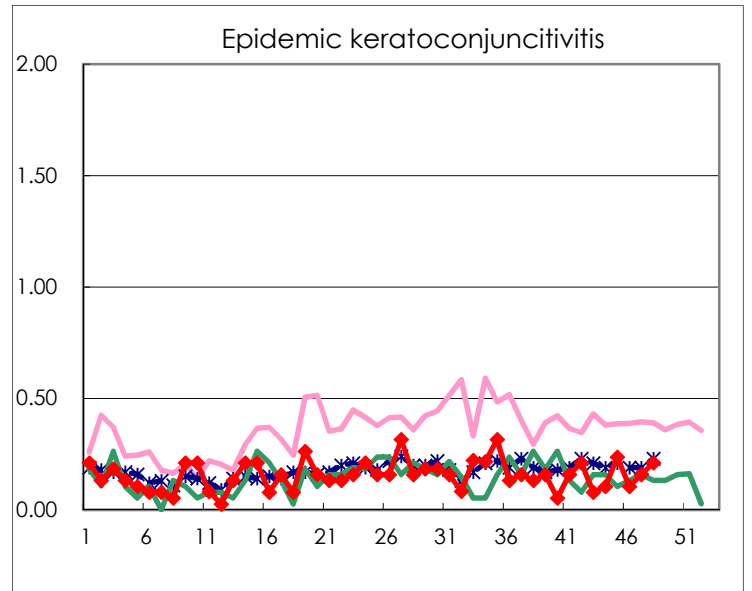
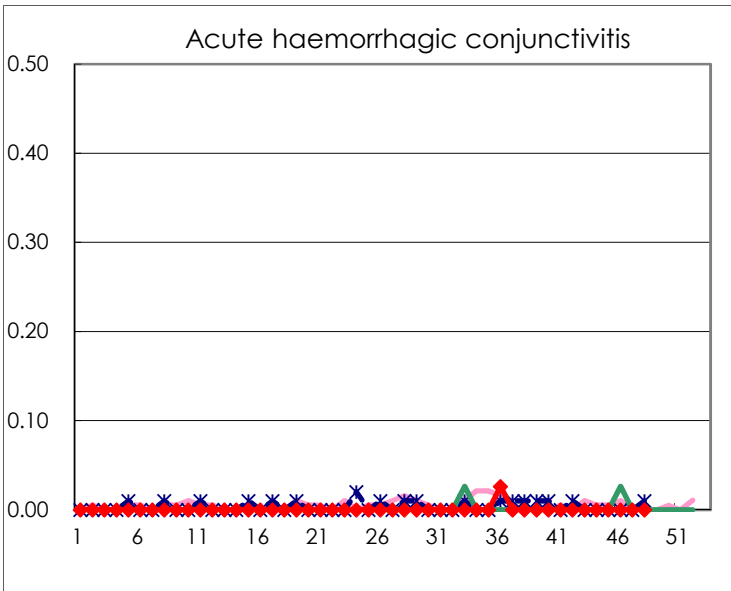
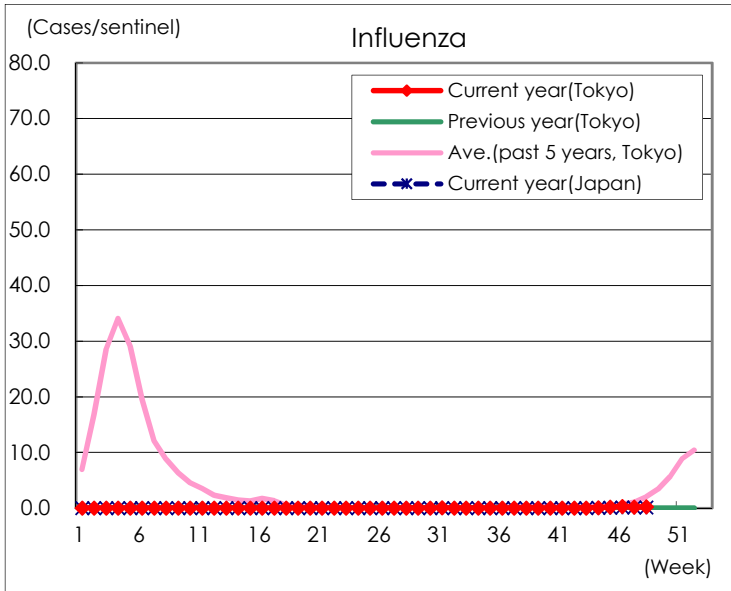
Diseases	Tokyo				
	45th	46th	47th	48th	/sentinel
Respiratory syncytial virus infection	101	130	89	80	0.31
Pharyngoconjunctival fever	28	30	24	48	0.18
Group A streptococcal pharyngitis	64	61	67	54	0.21
Infectious gastroenteritis	1,103	1,480	1,431	1,746	6.72
Chickenpox	36	33	35	36	0.14
Hand, foot, and mouth disease	126	83	90	65	0.25
Erythema infectiosum	3	5	3	2	0.01
Exanthem subitum	79	75	74	74	0.28
Herpangina	34	28	20	8	0.03
Mumps	11	8	13	10	0.04
Kawasaki disease	1	1	3	2	0.01
Cold with exanthems	7	7	4	6	0.02
Influenza	84	125	72	107	0.26
Acute hemorrhagic conjunctivitis					
Epidemic keratoconjunctivitis	9	4	6	8	0.21
Bacterial meningitis					
Aseptic meningitis	1			1	0.04
Mycoplasma pneumonia		1		1	0.04
Chlamydial pneumonia (excluding psittacosis)	1				
Infectious gastroenteritis (only by Rotavirus)					
Influenza-Associated Hospitalizations				1	0.04

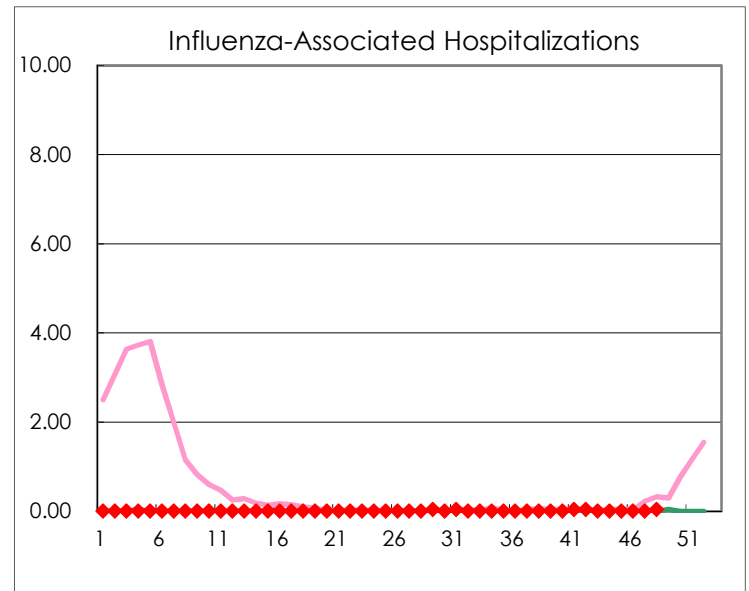
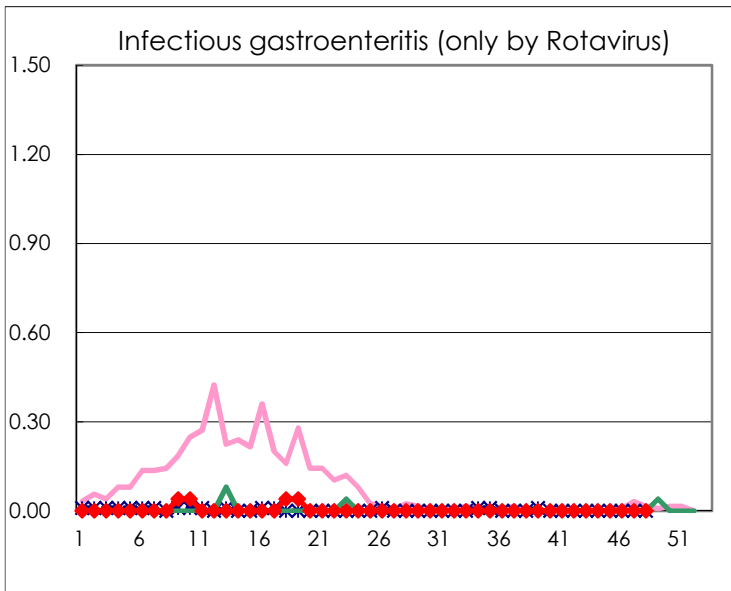
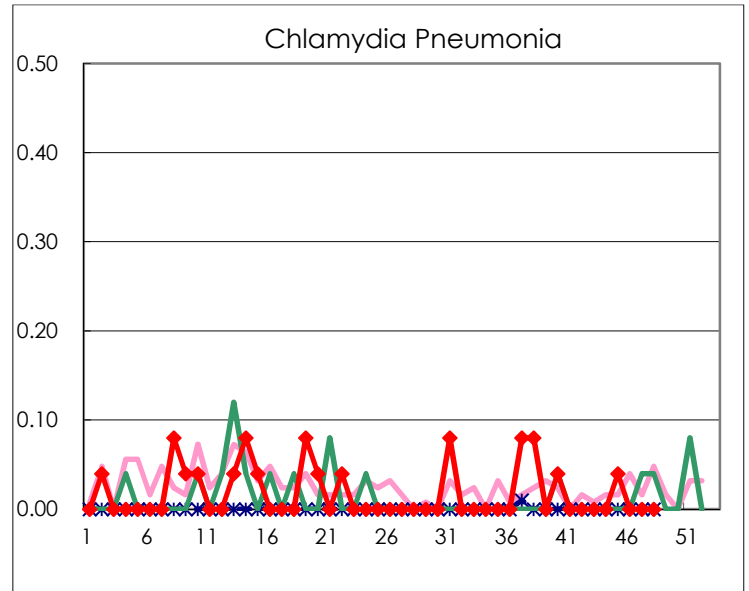
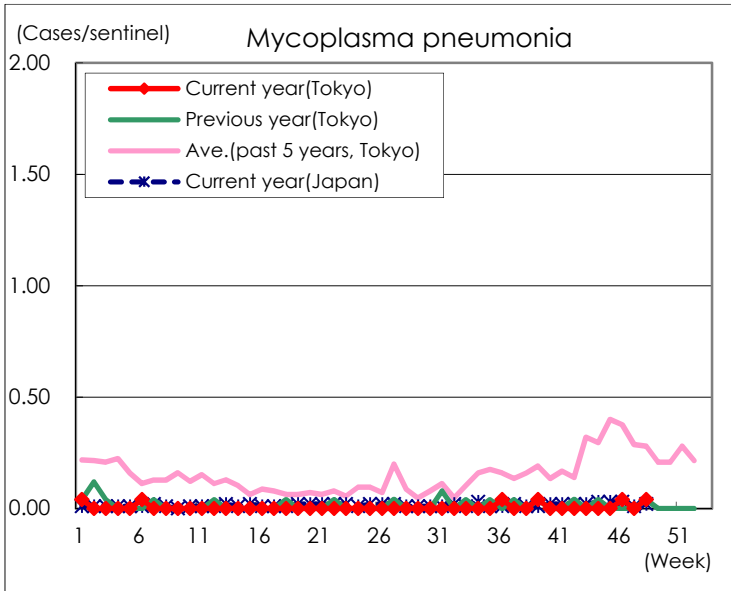
(Blank means 0.)

Disease Trend Graph (weekly reported cases per sentinel in comparison)









Number of sentinel facilities for weekly reporting		
Types of sentinels	Number of sentinels	Sentinels having reported
Pediatric	264	260
Influenza	419	410
Ophthalmic	39	38
Specially-designated	25	25