

15 December 2022 / Number 49 (12/5 ~ 12/11)

Surveillance System in Tokyo, Japan

The infectious diseases which all physicians must report
All physicians must report to health centers the incidence of the diseases which are shown at page one. Health centers electronically report the individual cases to Tokyo Metropolitan Infectious Disease Surveillance Center.

The infectious diseases required to be reported by the sentinels
The numbers of patients who visit the sentinel clinics or hospitals during a week are reported to health centers in Tokyo. And they electronically report the numbers to Tokyo Metropolitan Infectious Disease Surveillance Center. We have about 500 sentinel clinics and hospitals in Tokyo.

Tokyo Metropolitan Institute of Public Health

TEL:81-3-3363-3213 FAX:81-3-5332-7365

e-mail:tmiph@section.metro.tokyo.jp

URL:idsc.tmiph.metro.tokyo.lg.jp/

Number of patients with the diseases which all physicians must report

Category	Diseases	Tokyo					Japan	
		46th	47th	48th	49th	Cum 2022	49th	Cum 2022
I	Ebola hemorrhagic fever							
	Crimean-Congo hemorrhagic fever							
	Smallpox							
	South American hemorrhagic fever							
	Plague							
	Marburg disease							
	Lassa fever							
II	Acute poliomyelitis							
	Tuberculosis	54	30	27	28	1,872	172	13,800
	Diphtheria							
	Severe Acute Respiratory Syndrome(SARS)							
	Middle East Respiratory Syndrome (MERS)							
	Avian influenza H5N1							
	Avian influenza H7N9							
III	Cholera					1		1
	Shigellosis					2		14
	Enterohemorrhagic Escherichia coli infection	3	5	5	5	344	35	3,223
	Typhoid fever					7		16
	Paratyphoid fever					3		8
IV	Hepatitis E			3	2	120	3	395
	West Nile fever							
	Hepatitis A					5	1	64
	Echinococcosis					3	2	24
	Yellow fever							
	Psittacosis		1		1	4	1	12
	Omsk hemorrhagic fever							
	Relapsing fever							20
	Kyasanur forest disease							
	Q fever							
	Rabies							
	Coccidioidomycosis							2
	Monkeypox					5		6
	Zika virus infection							
	Severe Fever with Thrombocytopenia Syndrome					1		117
	Hemorrhagic fever with renal syndrome							
	Western equine encephalitis							
	Tick-borne encephalitis							
	Anthrax							
	Chikungunya fever					1		5
	Scrub typhus(Tsutsugamushi disease)		2	3	1	10	53	352
	Dengue fever			1		25	1	94
	Eastern equine encephalitis							
	Avian influenza (excluding H5N1 and H7N9)							
	Nipah virus infection							
	Japanese spotted fever						2	459
	Japanese encephalitis							5
	Hantavirus pulmonary syndrome							
	Herpes B virus infection							
	Glanders							
	Brucellosis							1
	Venezuelan equine encephalitis							
	Hendra virus infection							
Epidemic typhus								
Botulism					1		1	
Malaria		1	2		9		30	
Tularemia								
Lyme disease					2		13	
Lyssavirus infection(excluding rabies)								
Rift valley fever								
Melioidosis							2	
Legionellosis	7	3	1	2	115	26	2,060	
Leptospirosis					4		36	
Rocky mountain spotted fever								

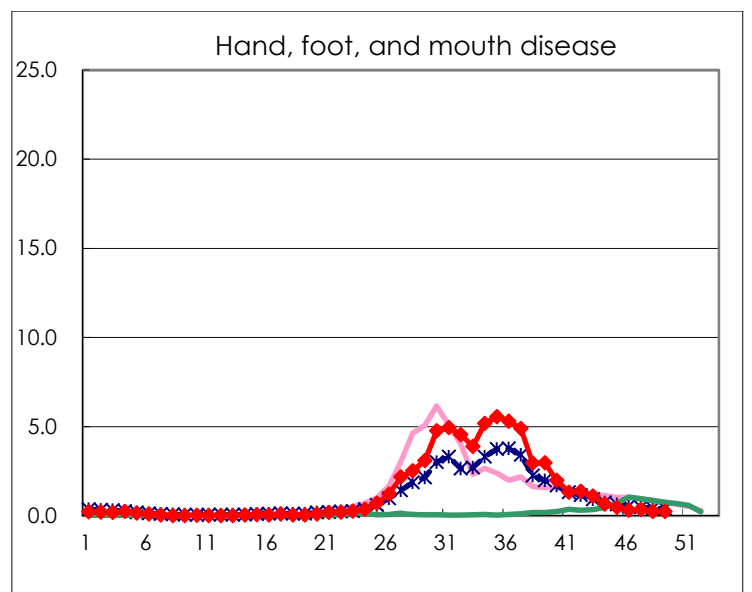
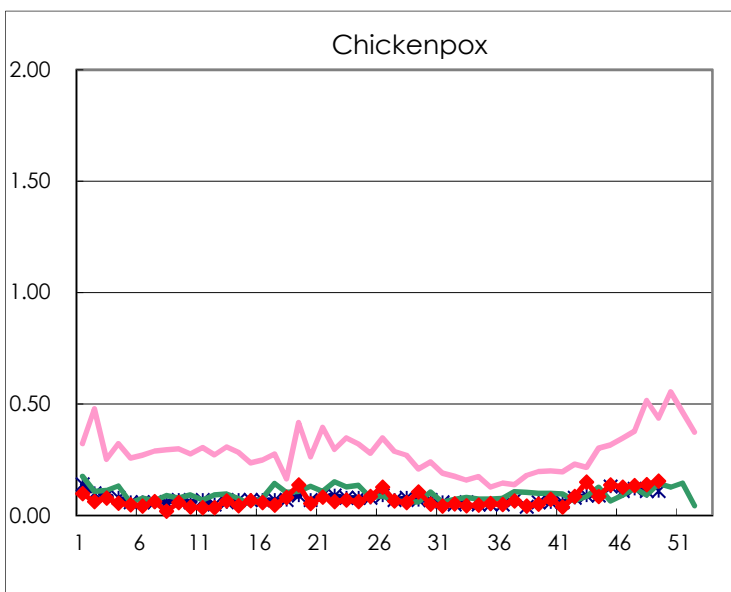
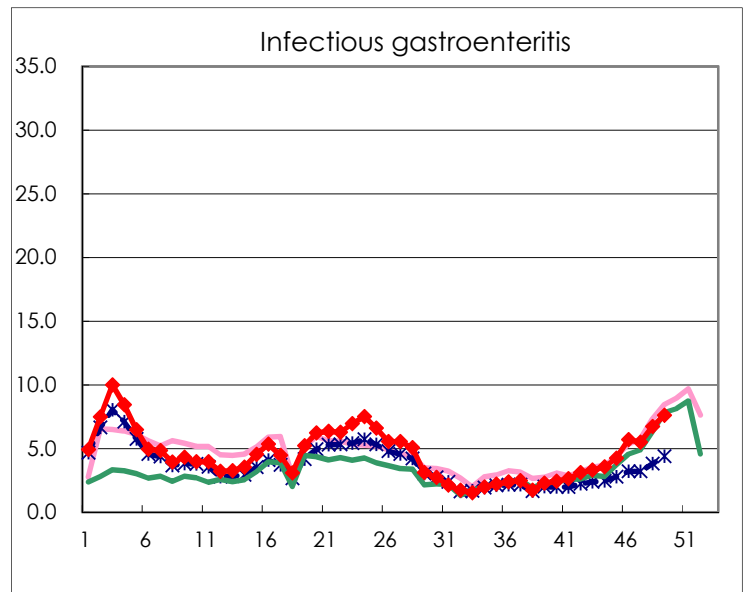
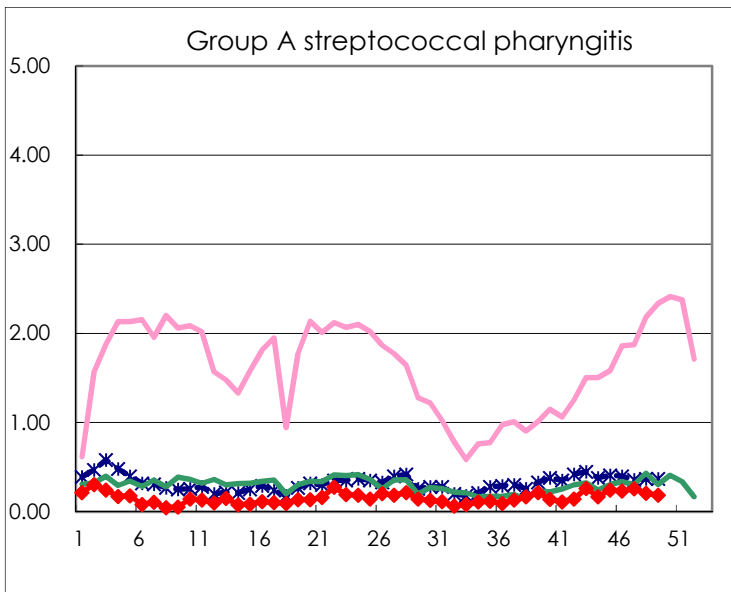
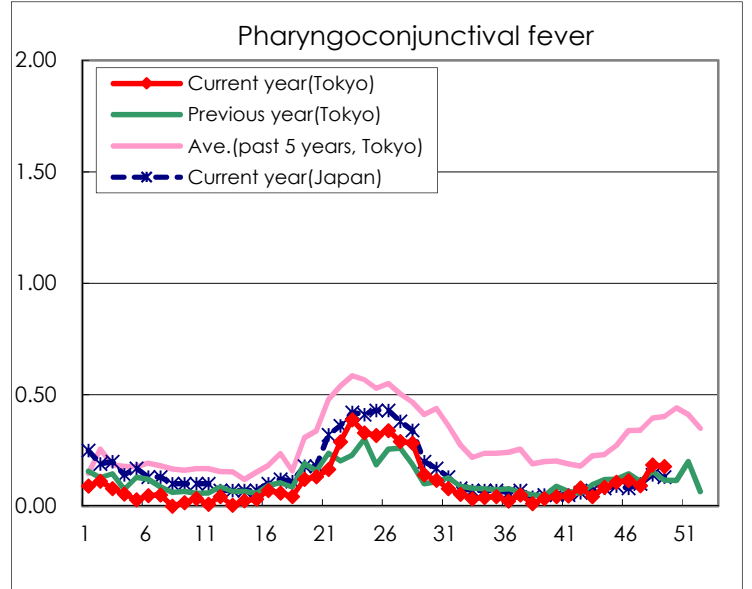
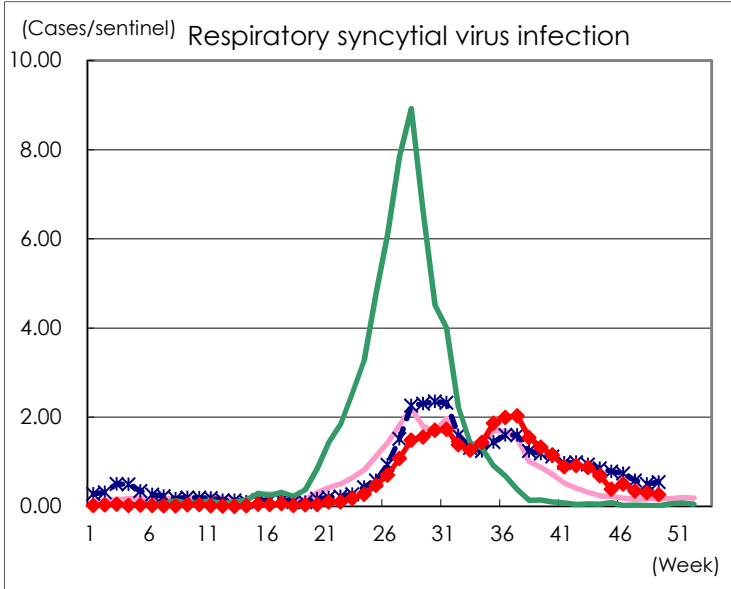
Category	Diseases	Tokyo					Japan	
		46th	47th	48th	49th	Cum 2022	49th	Cum 2022
V	Amebiasis	1	2		1	108	6	494
	Viral hepatitis(excluding hepatitis A and E)	1			1	33	1	193
	CRE infection	3	4	4	2	195	21	1,850
	Acute Flaccid Paralysis (excluding Acute poliomyelitis)					4	1	35
	Acute encephalitis(excluding JE and WNE)					28	3	362
	Cryptosporidiosis					2		7
	Creutzfeldt-Jakob disease			1		18	1	160
	Severe invasive streptococcal infections(TSLS)	1	5	2	1	100	5	685
	Acquired immunodeficiency syndrome (AIDS)	8	3	8	7	268	4	814
	Giardiasis	1				12		32
	Invasive <i>Haemophilus influenzae</i> disease	1				16	3	181
	Invasive meningococcal disease	1				1		8
	Invasive pneumococcal disease	4	1	6	3	130	26	1,212
	Varicella (limited to hospitalized case)		1	1	3	49	4	306
	Congenital rubella syndrome							
	Syphilis	78	72	79	76	3,449	141	12,192
	Disseminated cryptococcosis		1			14	1	141
	Tetanus		1	1		6		94
	Vancomycin-resistant <i>S. aureus</i> infection							
	Vancomycin-resistant <i>Enterococcus</i> infection					6		127
	Pertussis	1	4	5		53	7	475
Rubella					3		14	
Measles							6	
MDRA infection					2		13	

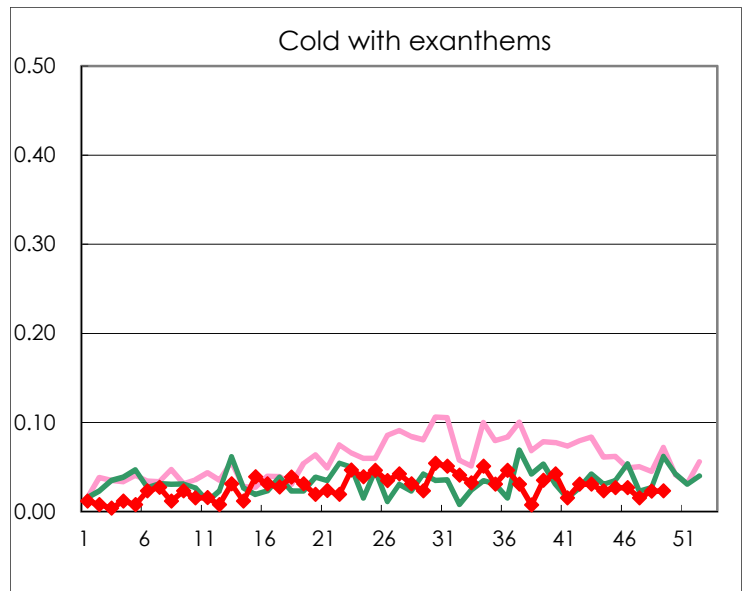
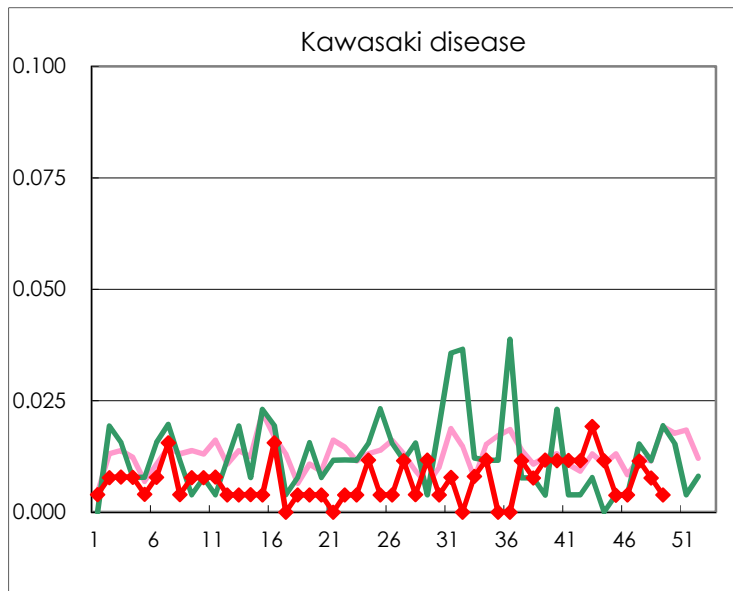
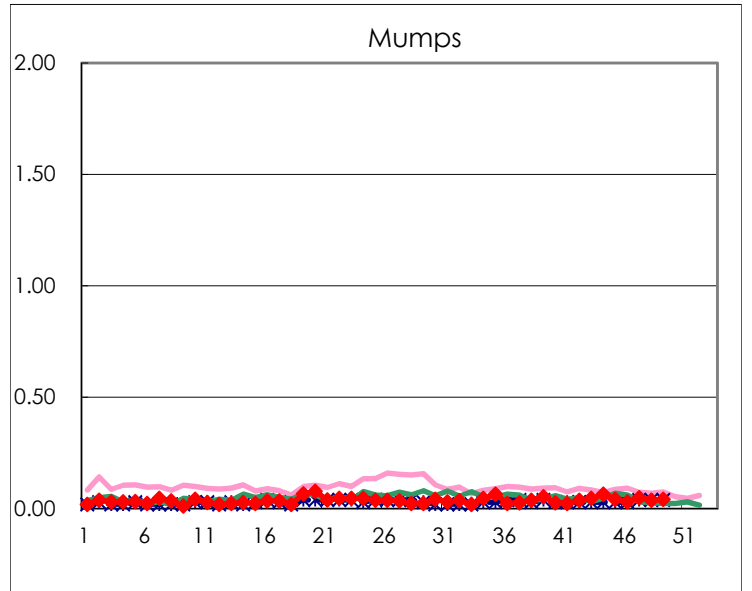
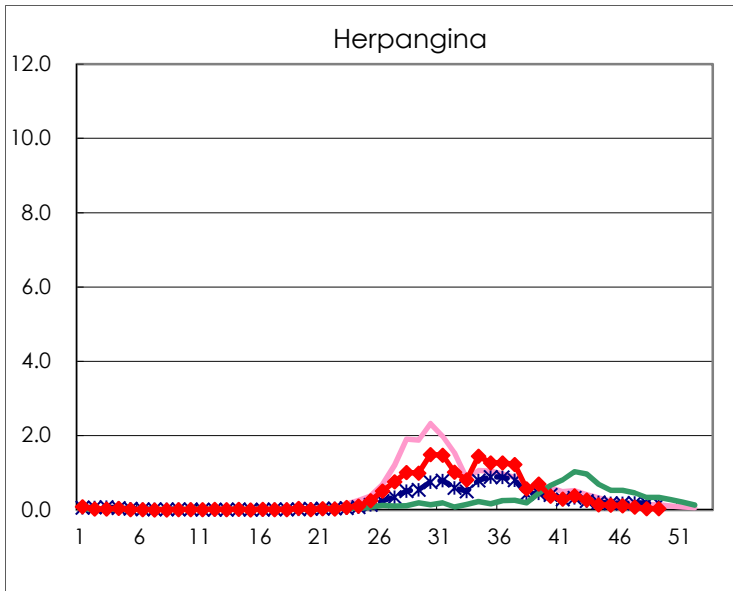
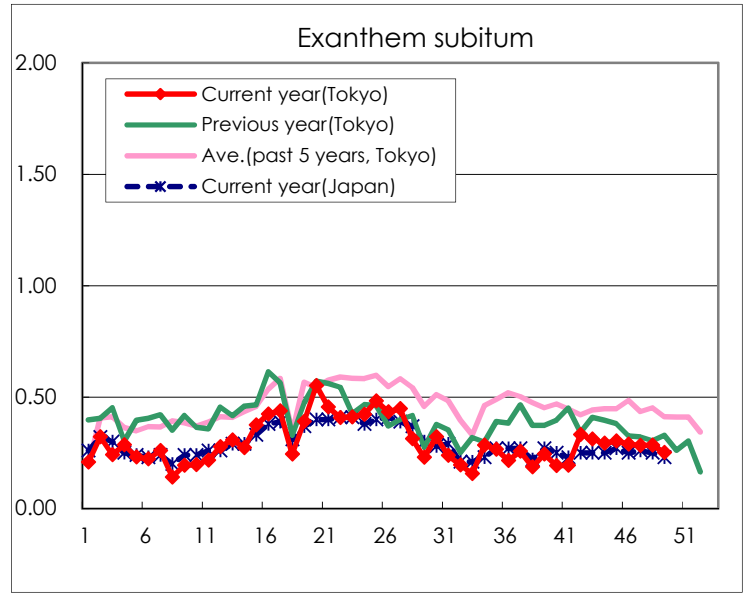
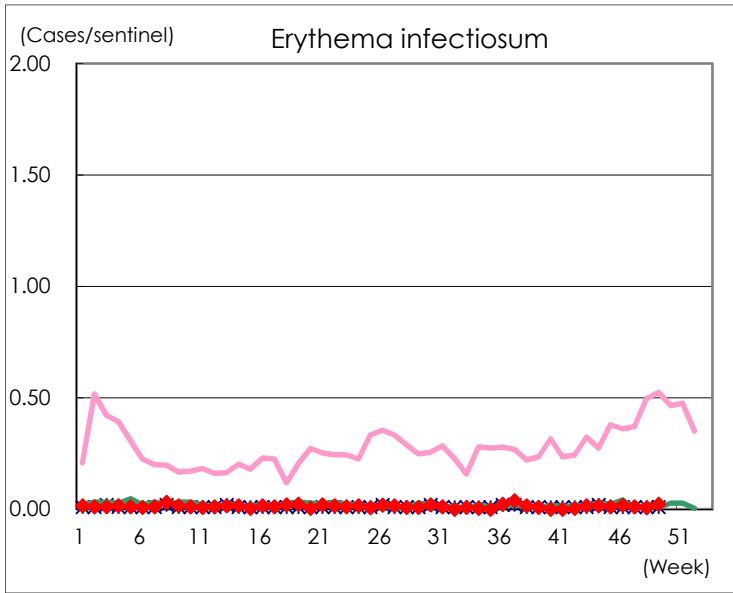
Number of patients with the diseases to be reported
by the designated clinics and hospitals

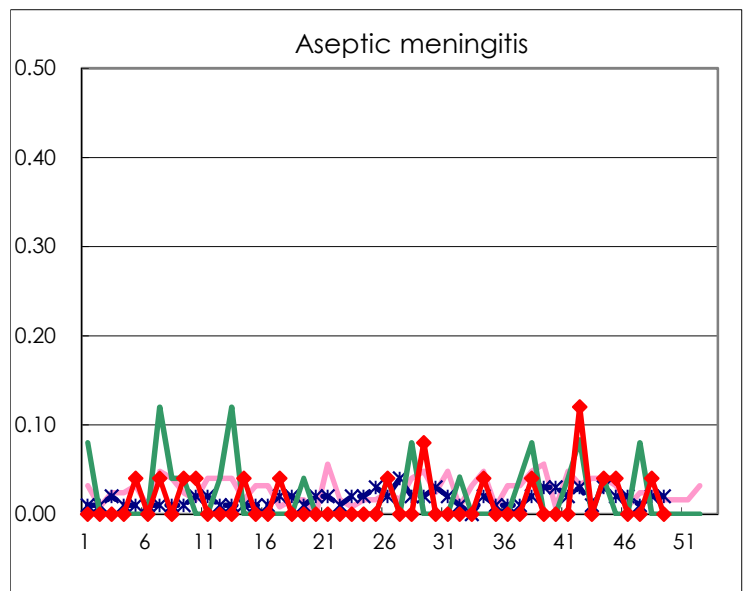
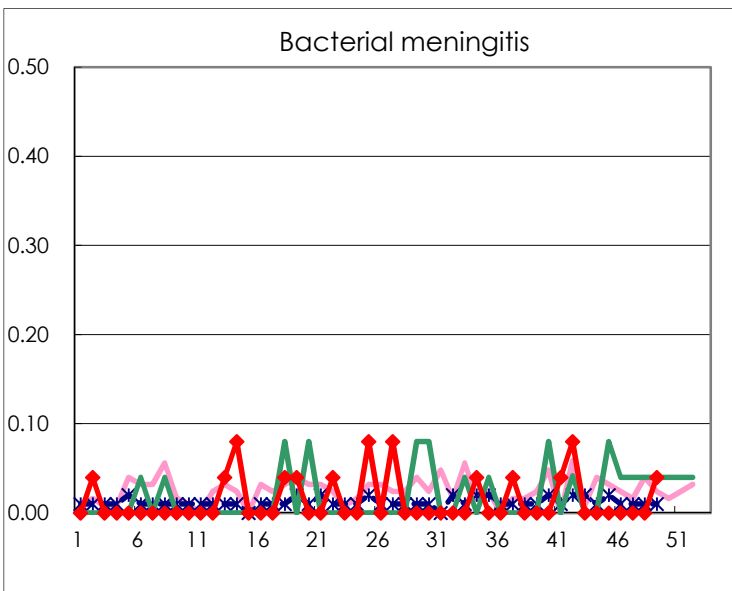
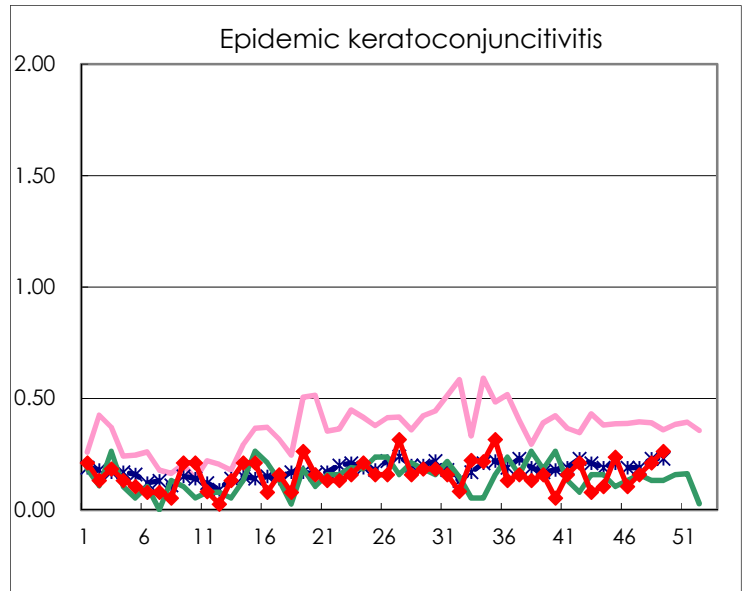
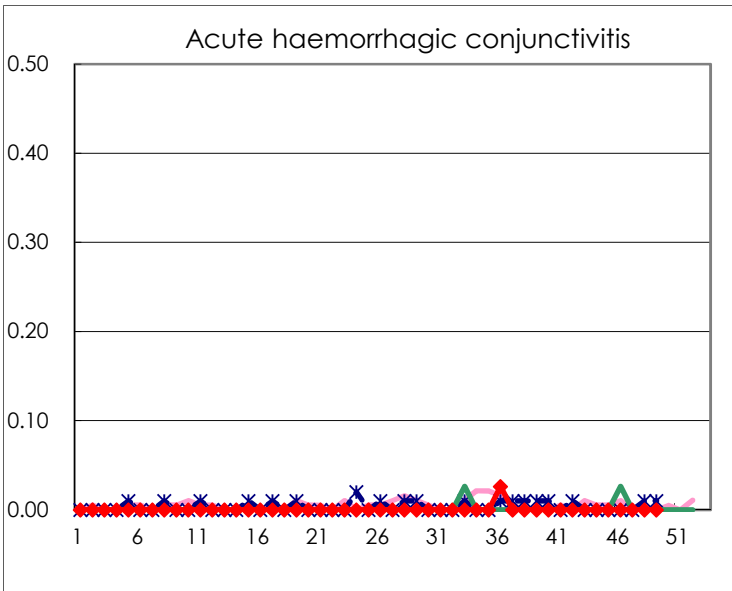
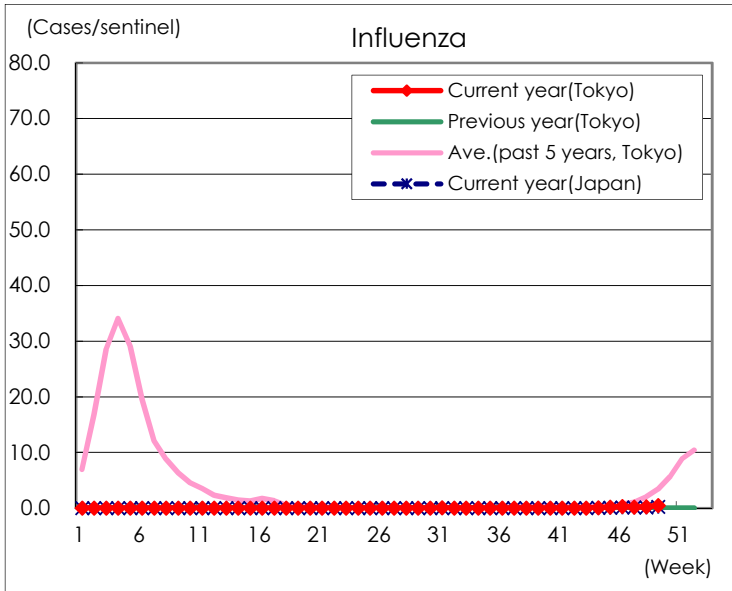
Diseases	Tokyo				
	46th	47th	48th	49th	/sentinel
Respiratory syncytial virus infection	130	89	80	68	0.26
Pharyngoconjunctival fever	30	24	48	46	0.18
Group A streptococcal pharyngitis	61	67	54	48	0.19
Infectious gastroenteritis	1,480	1,431	1,746	1,969	7.60
Chickenpox	33	35	36	40	0.15
Hand, foot, and mouth disease	83	90	65	64	0.25
Erythema infectiosum	5	3	2	6	0.02
Exanthem subitum	75	74	74	65	0.25
Herpangina	28	20	8	9	0.03
Mumps	8	13	10	11	0.04
Kawasaki disease	1	3	2	1	0.00
Cold with exanthems	7	4	6	6	0.02
Influenza	125	72	107	203	0.50
Acute hemorrhagic conjunctivitis					
Epidemic keratoconjunctivitis	4	6	8	10	0.26
Bacterial meningitis				1	0.04
Aseptic meningitis			1		
<i>Mycoplasma pneumoniae</i>	1		1		
<i>Chlamydia pneumoniae</i> (excluding psittacosis)					
Infectious gastroenteritis (only by Rotavirus)					
Influenza-Associated Hospitalizations			1		

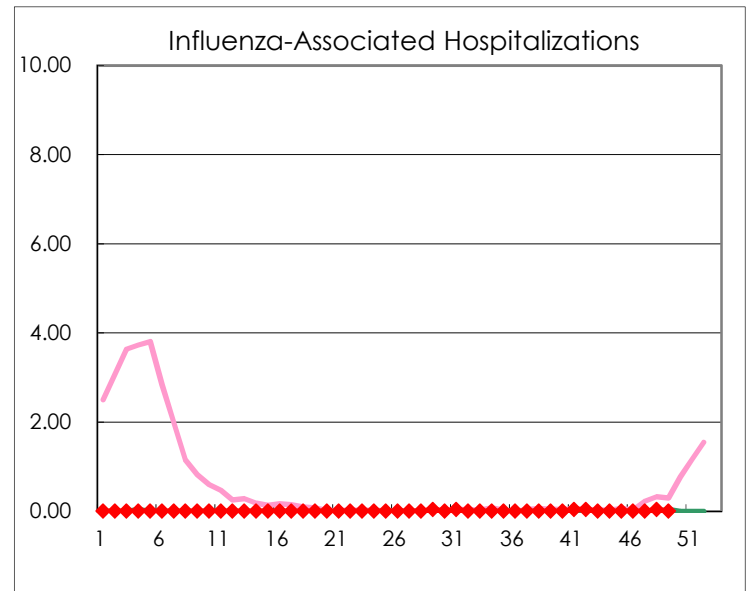
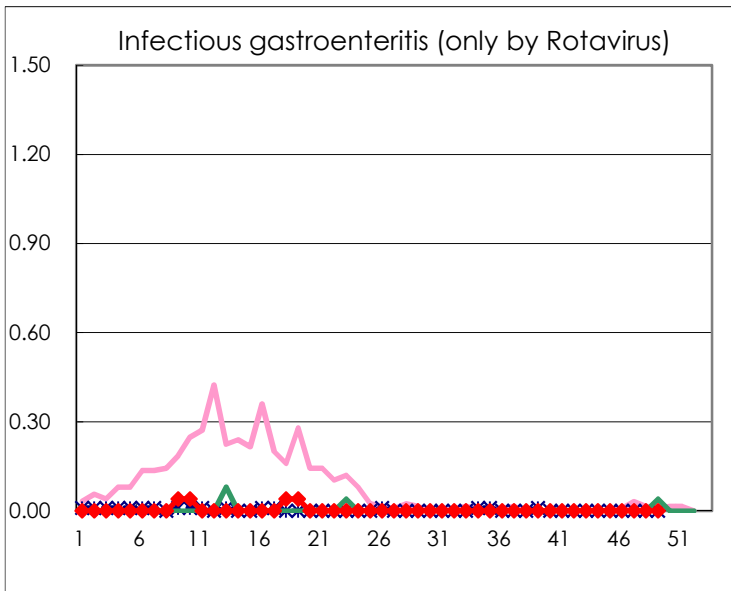
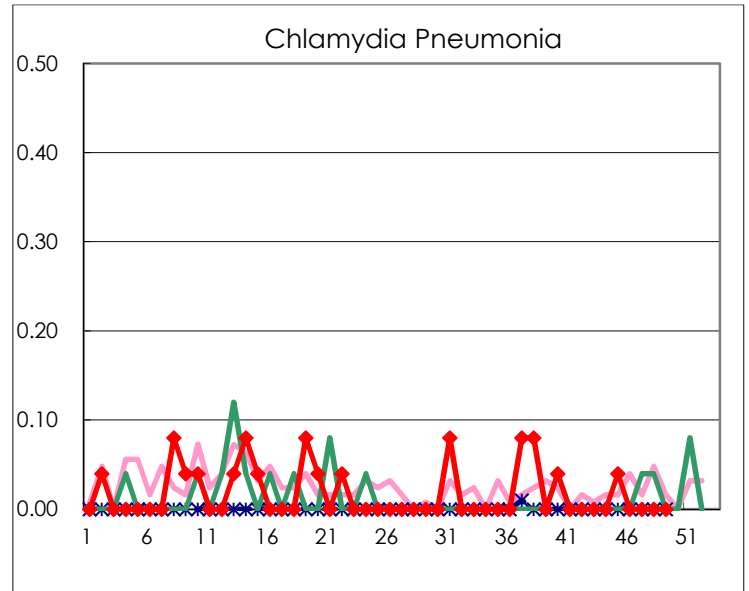
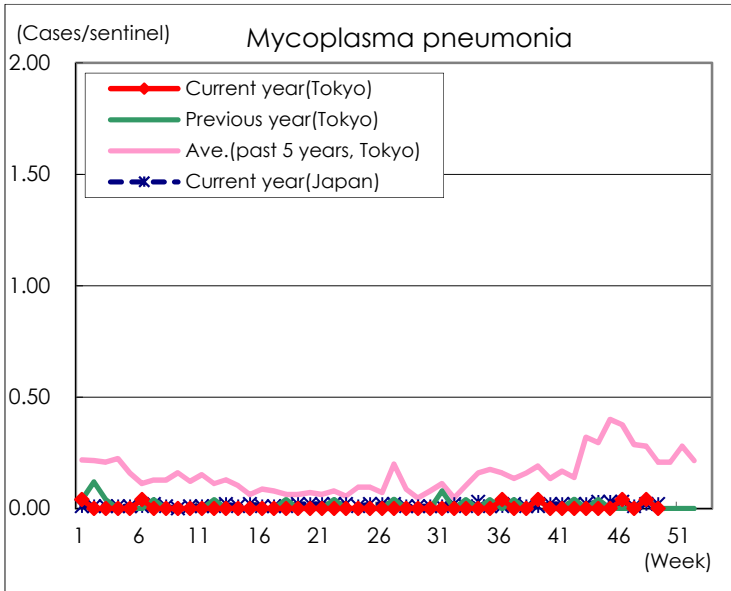
(Blank means 0.)

Disease Trend Graph (weekly reported cases per sentinel in comparison)









Number of sentinel facilities for weekly reporting		
Types of sentinels	Number of sentinels	Sentinels having reported
Pediatric	264	259
Influenza	419	406
Ophthalmic	39	38
Specially-designated	25	25