
INFECTIOUS DISEASES WEEKLY REPORT

TOKYO IDWR

Tokyo Metropolitan Infectious Disease Surveillance Center

4 January 2023 / Number 51 (12/19 ~ 12/25)

Surveillance System in Tokyo, Japan

The infectious diseases which all physicians must report
All physicians must report to health centers the incidence of the diseases which are shown at page one. Health centers electronically report the individual cases to Tokyo Metropolitan Infectious Disease Surveillance Center.

The infectious diseases required to be reported by the sentinels
The numbers of patients who visit the sentinel clinics or hospitals during a week are reported to health centers in Tokyo. And they electronically report the numbers to Tokyo Metropolitan Infectious Disease Surveillance Center. We have about 500 sentinel clinics and hospitals in Tokyo.

Tokyo Metropolitan Institute of Public Health

TEL:81-3-3363-3213 FAX:81-3-5332-7365

e-mail:tmiph@section.metro.tokyo.jp

URL:idsc.tmiph.metro.tokyo.lg.jp/

Number of patients with the diseases which all physicians must report

Category	Diseases	Tokyo					Japan	
		48th	49th	50th	51st	Cum 2022	51st	Cum 2022
I	Ebola hemorrhagic fever							
	Crimean-Congo hemorrhagic fever							
	Smallpox							
	South American hemorrhagic fever							
	Plague							
	Marburg disease							
	Lassa fever							
II	Acute poliomyelitis							
	Tuberculosis	30	31	37	35	1,953	197	14,341
	Diphtheria							
	Severe Acute Respiratory Syndrome(SARS)							
	Middle East Respiratory Syndrome (MERS)							
	Avian influenza H5N1							
	Avian influenza H7N9							
III	Cholera					1		1
	Shigellosis					2	1	16
	Enterohemorrhagic Escherichia coli infection	5	5	4	5	353	45	3,330
	Typhoid fever					7	1	17
	Paratyphoid fever					3		8
IV	Hepatitis E	3	3	5	4	130	9	422
	West Nile fever							
	Hepatitis A				1	6	2	68
	Echinococcosis					3		24
	Yellow fever							
	Psittacosis		1			4		12
	Omsk hemorrhagic fever							
	Relapsing fever							23
	Kyasanur forest disease							
	Q fever							
	Rabies							
	Coccidioidomycosis							2
	Monkeypox					5	1	7
	Zika virus infection							
	Severe Fever with Thrombocytopenia Syndrome					1		118
	Hemorrhagic fever with renal syndrome							
	Western equine encephalitis							
	Tick-borne encephalitis							
	Anthrax							
	Chikungunya fever					1		6
	Scrub typhus(Tsutsugamushi disease)	3	1	2	2	14	31	453
	Dengue fever	1				25	2	98
	Eastern equine encephalitis							
	Avian influenza (excluding H5N1 and H7N9)							
	Nipah virus infection							
	Japanese spotted fever							460
	Japanese encephalitis							5
	Hantavirus pulmonary syndrome							
	Herpes B virus infection							
	Glanders							
	Brucellosis							1
	Venezuelan equine encephalitis							
	Hendra virus infection							
Epidemic typhus								
Botulism					1		1	
Malaria	2				9	1	31	
Tularemia								
Lyme disease					2		14	
Lyssavirus infection(excluding rabies)								
Rift valley fever								
Melioidosis							2	
Legionellosis	1	2		2	117	17	2,106	
Leptospirosis					4		36	
Rocky mountain spotted fever								

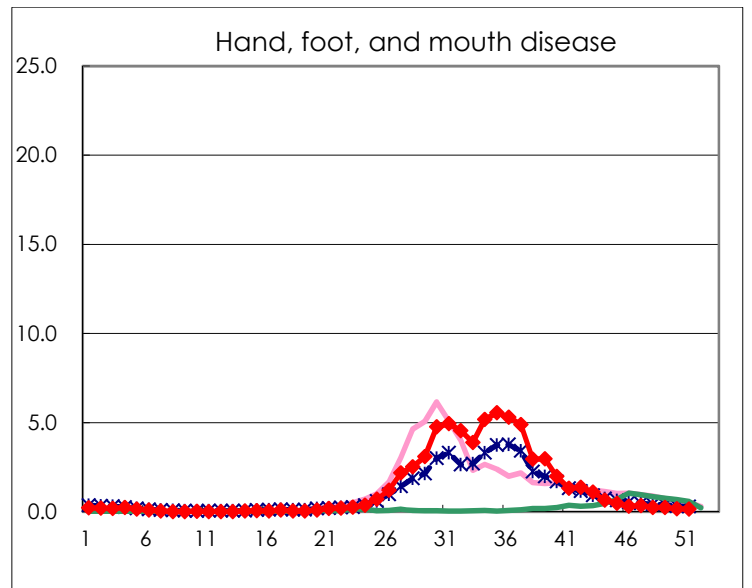
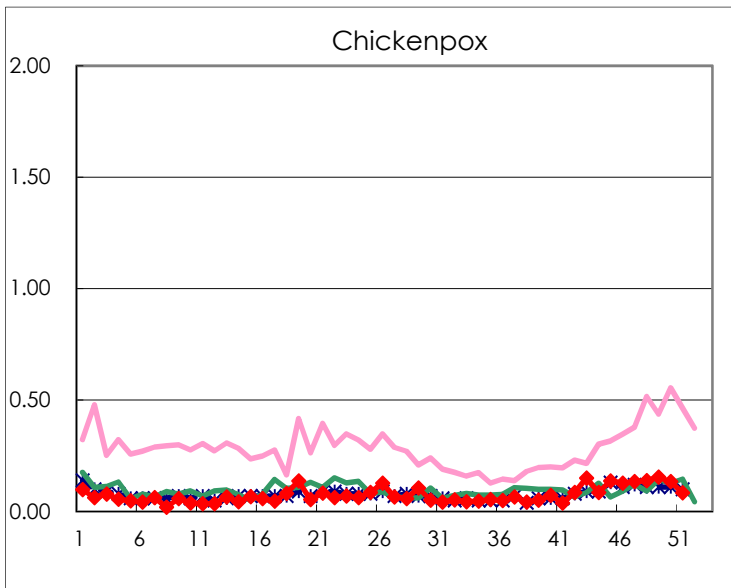
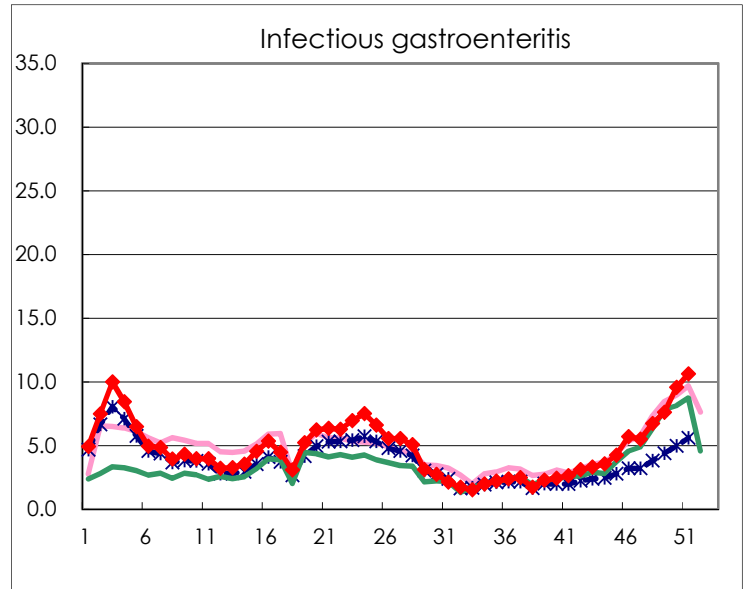
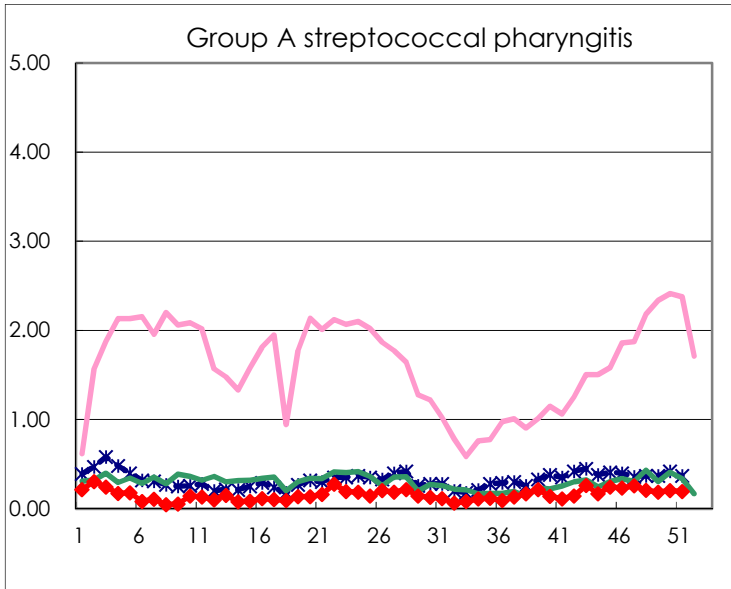
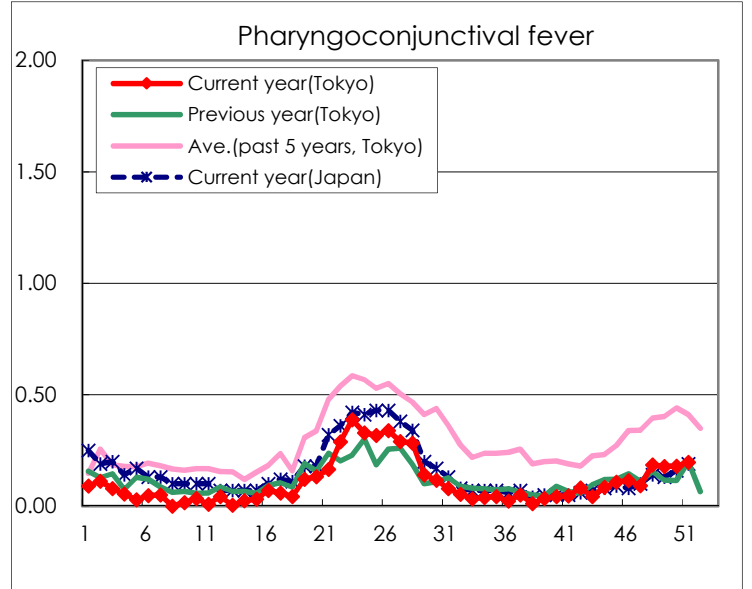
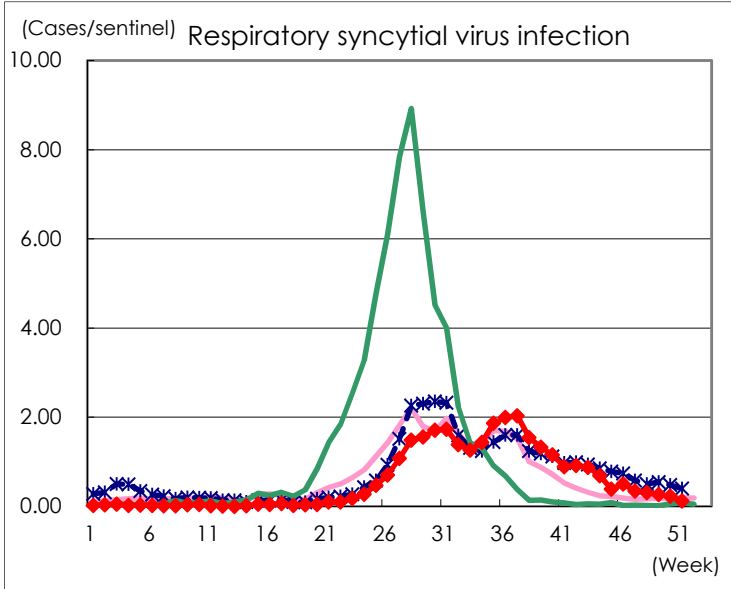
Category	Diseases	Tokyo					Japan	
		48th	49th	50th	51st	Cum 2022	51st	Cum 2022
V	Amebiasis		2	1	3	113	8	517
	Viral hepatitis(excluding hepatitis A and E)		1	1		34	2	199
	CRE infection	4	3	3	3	202	23	1,925
	Acute Flaccid Paralysis (excluding Acute poliomyelitis)					4		39
	Acute encephalitis(excluding JE and WNE)					28	6	381
	Cryptosporidiosis					2		7
	Creutzfeldt-Jakob disease	1				18	1	163
	Severe invasive streptococcal infections(TSLS)	2	1	3	1	104	9	716
	Acquired immunodeficiency syndrome (AIDS)	8	7	4	6	278	11	847
	Giardiasis					12		32
	Invasive <i>Haemophilus influenzae</i> disease			1	2	19	11	202
	Invasive meningococcal disease					1		8
	Invasive pneumococcal disease	6	4	4	1	136	24	1,290
	Varicella (limited to hospitalized case)	1	3			49	2	319
	Congenital rubella syndrome							
	Syphilis	79	80	62	64	3,579	169	12,757
	Disseminated cryptococcosis					14	1	148
	Tetanus	1				6		94
	Vancomycin-resistant <i>S. aureus</i> infection							
	Vancomycin-resistant <i>Enterococcus</i> infection					6		129
	Pertussis	5			2	55	4	495
Rubella				1	4	1	15	
Measles							6	
MDRA infection					2		14	

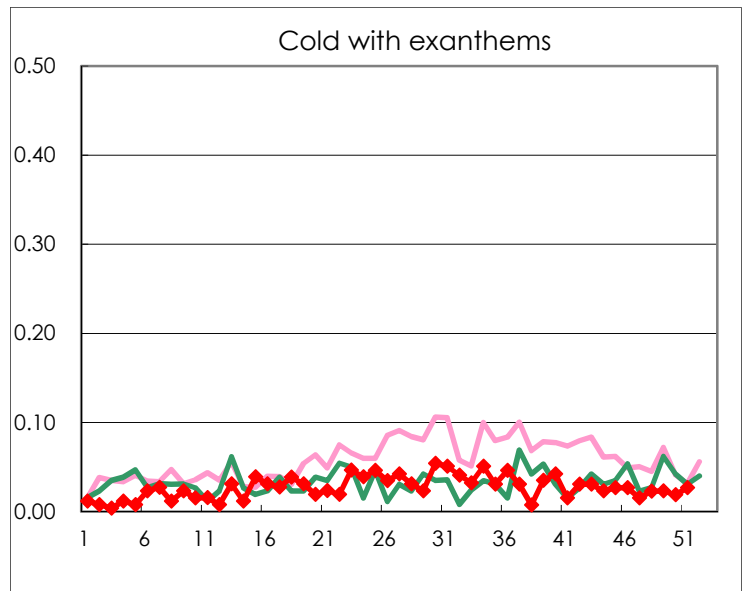
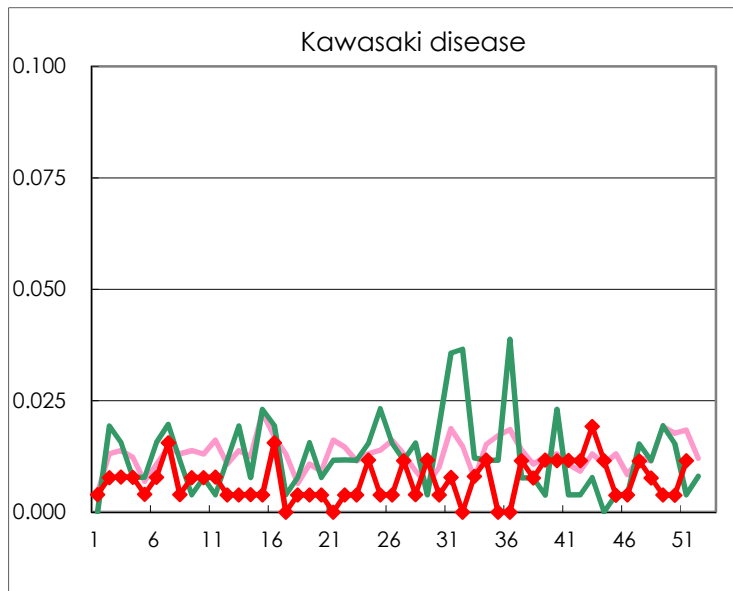
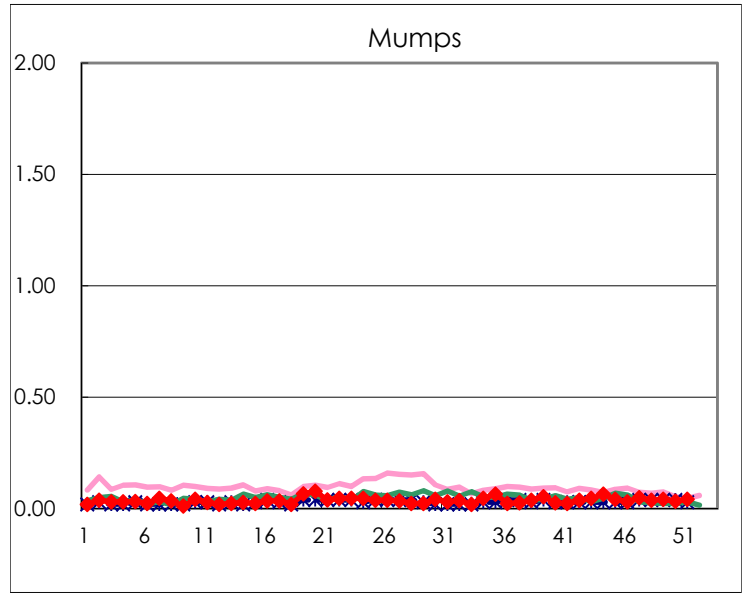
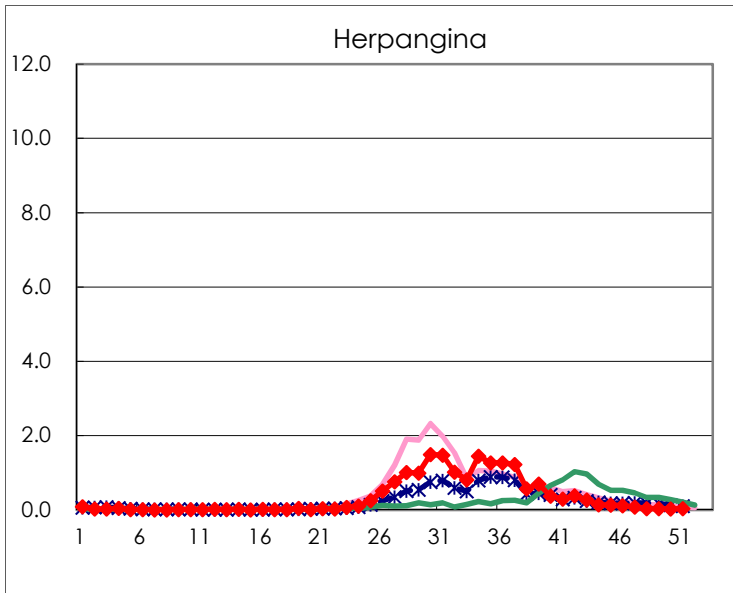
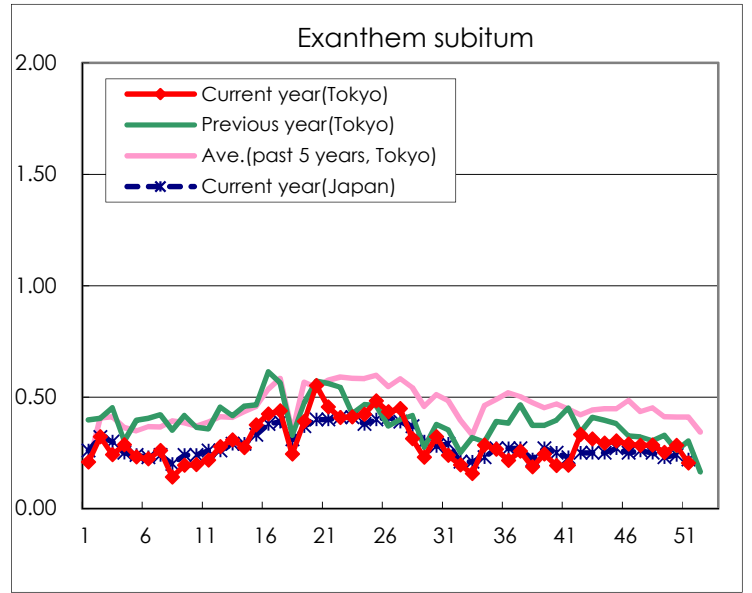
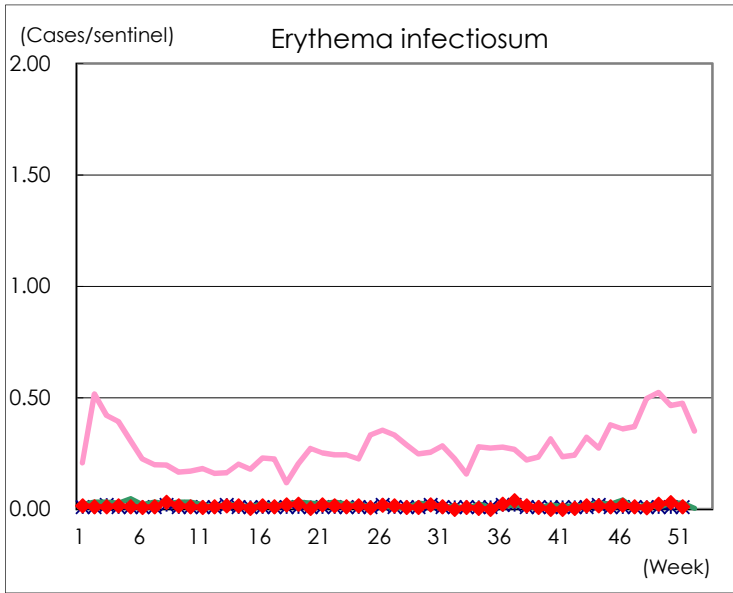
Number of patients with the diseases to be reported
by the designated clinics and hospitals

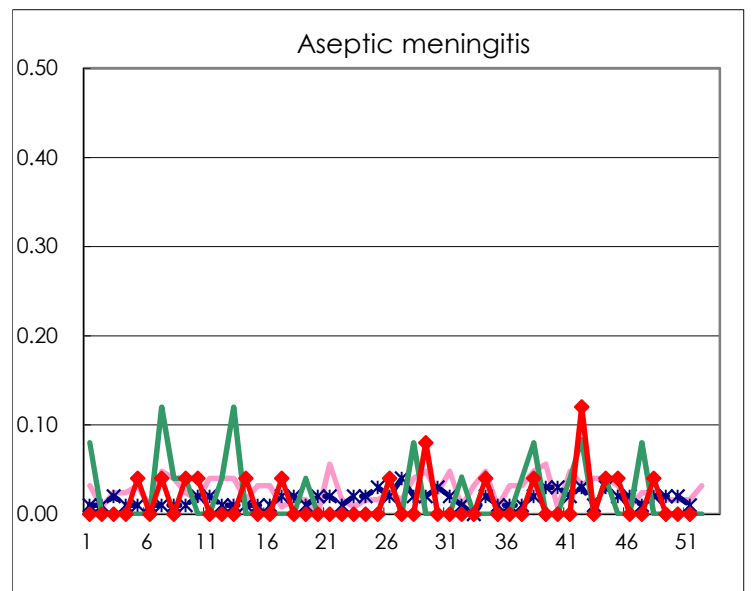
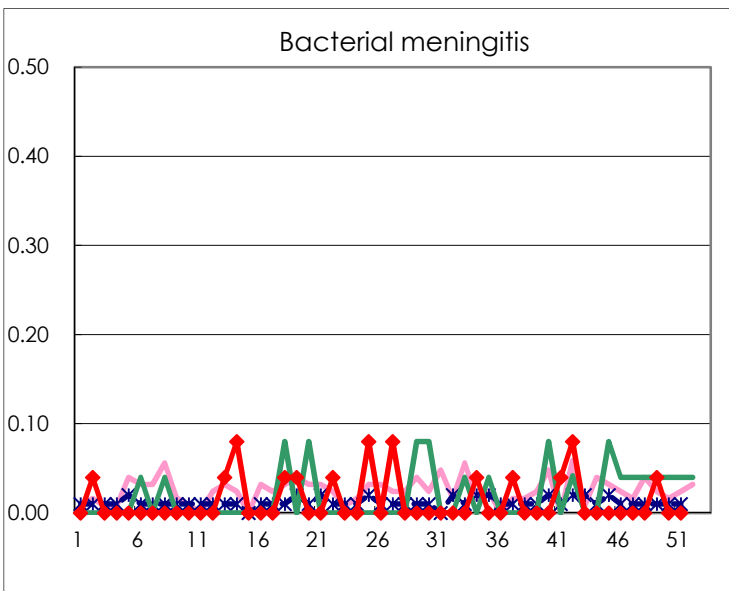
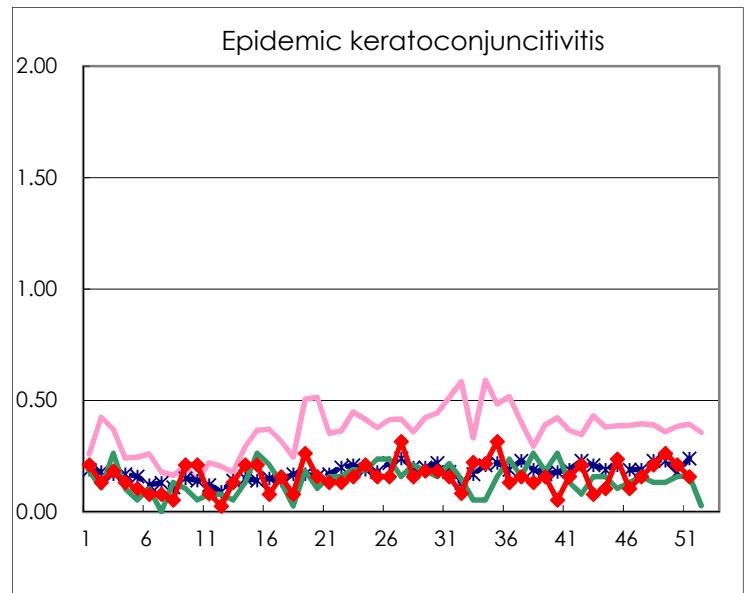
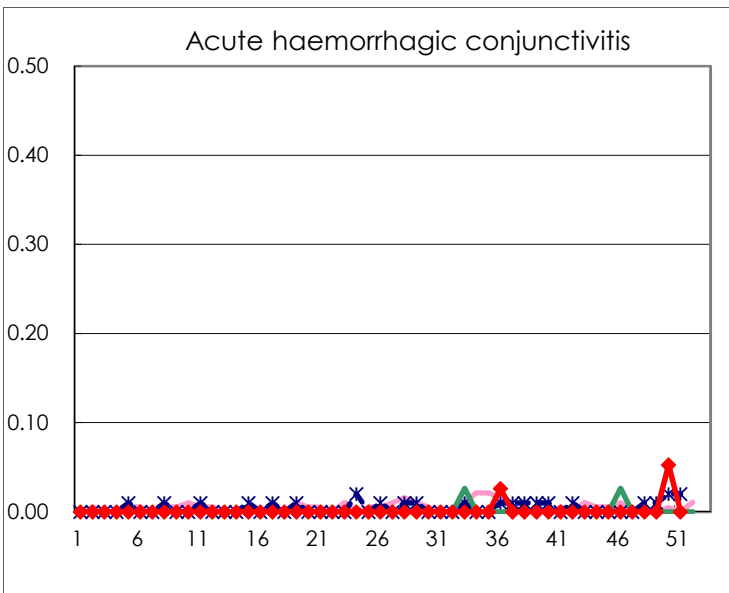
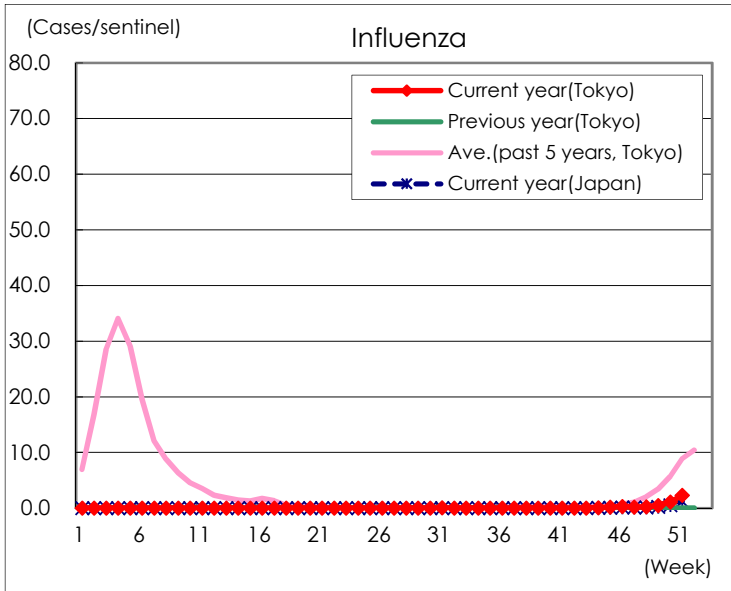
Diseases	Tokyo				
	48th	49th	50th	51st	/sentinel
Respiratory syncytial virus infection	80	68	59	31	0.12
Pharyngoconjunctival fever	48	46	47	51	0.20
Group A streptococcal pharyngitis	54	48	53	50	0.19
Infectious gastroenteritis	1,746	1,969	2,496	2,761	10.62
Chickenpox	36	40	35	22	0.08
Hand, foot, and mouth disease	65	64	46	38	0.15
Erythema infectiosum	2	6	8	3	0.01
Exanthem subitum	74	65	74	53	0.20
Herpangina	8	9	7	8	0.03
Mumps	10	11	9	11	0.04
Kawasaki disease	2	1	1	3	0.01
Cold with exanthems	6	6	5	7	0.03
Influenza	107	203	462	939	2.30
Acute hemorrhagic conjunctivitis				2	
Epidemic keratoconjunctivitis	8	10	8	6	0.16
Bacterial meningitis		1			
Aseptic meningitis	1				
Mycoplasma pneumonia	1				
Chlamydial pneumonia (excluding psittacosis)			1		
Infectious gastroenteritis (only by Rotavirus)					
Influenza-Associated Hospitalizations	1		5	9	0.38

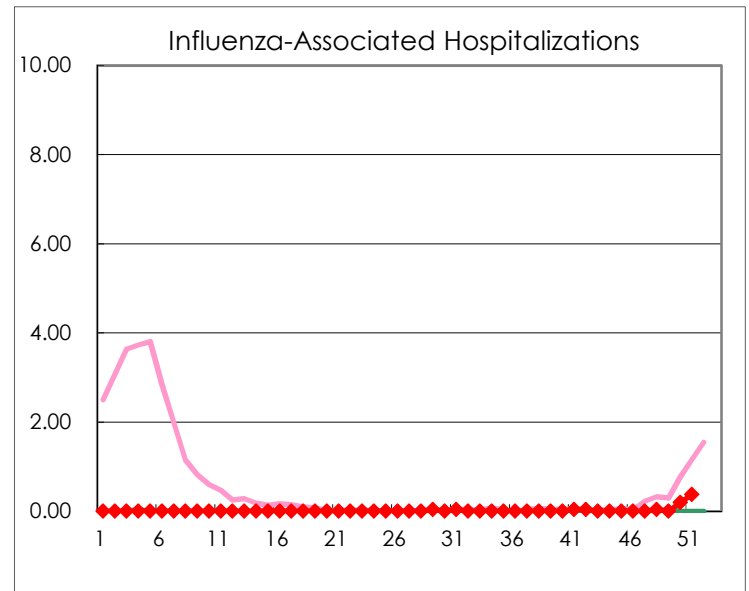
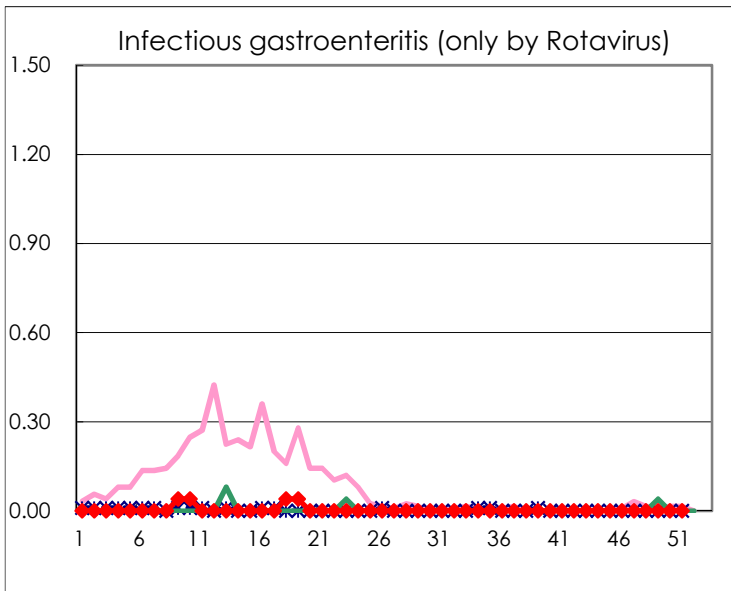
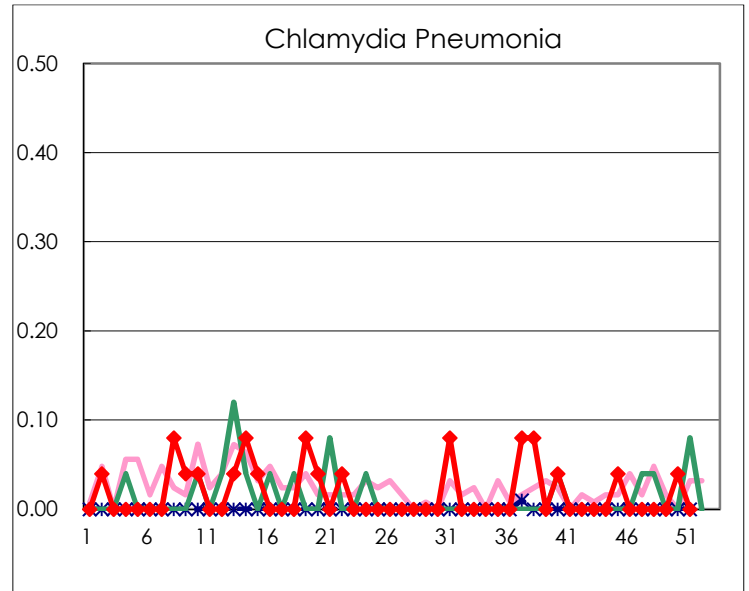
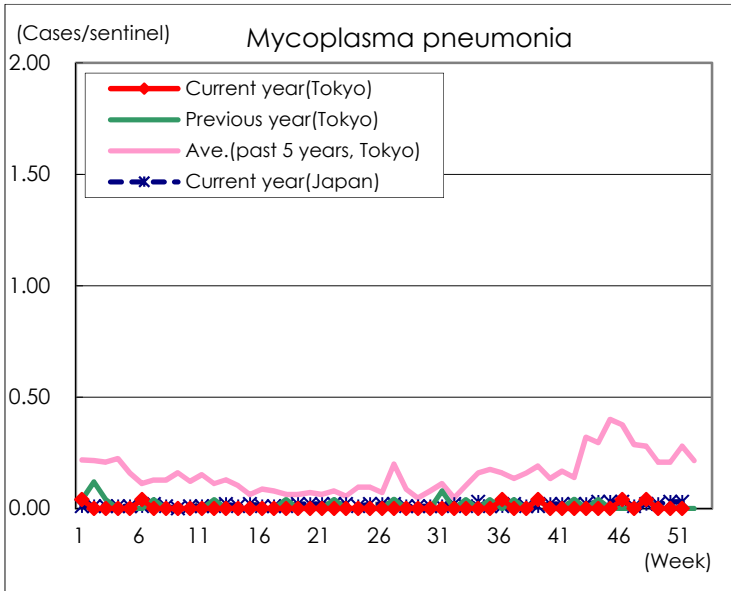
(Blank means 0.)

Disease Trend Graph (weekly reported cases per sentinel in comparison)









Number of sentinel facilities for weekly reporting		
Types of sentinels	Number of sentinels	Sentinels having reported
Pediatric	264	260
Influenza	419	409
Ophthalmic	39	38
Specially-designated	25	24