
INFECTIOUS DISEASES WEEKLY REPORT

TOKYO IDWR

Tokyo Metropolitan Infectious Disease Surveillance Center

30 March 2023 / Number 12
(3/20 ~ 3/26)

Surveillance System in Tokyo, Japan

The infectious diseases which all physicians must report
All physicians must report to health centers the incidence of the diseases which are shown at page one. Health centers electronically report the individual cases to Tokyo Metropolitan Infectious Disease Surveillance Center.

The infectious diseases required to be reported by the sentinels
The numbers of patients who visit the sentinel clinics or hospitals during a week are reported to health centers in Tokyo. And they electronically report the numbers to Tokyo Metropolitan Infectious Disease Surveillance Center. We have about 500 sentinel clinics and hospitals in Tokyo.

Tokyo Metropolitan Institute of Public Health

TEL:81-3-3363-3213 FAX:81-3-5332-7365

e-mail:tmiph@section.metro.tokyo.jp

URL:idsc.tmiph.metro.tokyo.lg.jp/

Number of patients with the diseases which all physicians must report

Category	Diseases	Tokyo					Japan	
		9th	10th	11th	12th	Cum 2023	12th	Cum 2023
I	Ebola hemorrhagic fever							
	Crimean-Congo hemorrhagic fever							
	Smallpox							
	South American hemorrhagic fever							
	Plague							
	Marburg disease							
	Lassa fever							
II	Acute poliomyelitis							
	Tuberculosis	46	36	31	33	406	196	2,782
	Diphtheria							
	Severe Acute Respiratory Syndrome(SARS)							
	Middle East Respiratory Syndrome (MERS)							
	Avian influenza H5N1							
	Avian influenza H7N9							
III	Cholera	1				1		1
	Shigellosis	1		1		2		6
	Enterohemorrhagic Escherichia coli infection	2	3	2	1	25	20	212
	Typhoid fever					2		13
	Paratyphoid fever					1		5
IV	Hepatitis E	5	3	8	4	55	8	132
	West Nile fever							
	Hepatitis A					3	2	17
	Echinococcosis							3
	Yellow fever							
	Psittacosis							2
	Omsk hemorrhagic fever							
	Relapsing fever							1
	Kyasanur forest disease							
	Q fever							
	Rabies							
	Coccidioidomycosis							
	Monkeypox	4	14	10	13	58	19	70
	Zika virus infection							
	Severe Fever with Thrombocytopenia Syndrome						1	11
	Hemorrhagic fever with renal syndrome							
	Western equine encephalitis							
	Tick-borne encephalitis							
	Anthrax							
	Chikungunya fever							1
	Scrub typhus(Tsutsugamushi disease)					4	1	50
	Dengue fever		1			3	1	11
	Eastern equine encephalitis							
	Avian influenza (excluding H5N1 and H7N9)							
	Nipah virus infection							
	Japanese spotted fever						1	6
	Japanese encephalitis							
	Hantavirus pulmonary syndrome							
	Herpes B virus infection							
	Glanders							
	Brucellosis							
	Venezuelan equine encephalitis							
	Hendra virus infection							
Epidemic typhus								
Botulism								
Malaria					3		4	
Tularemia								
Lyme disease								
Lyssavirus infection(excluding rabies)								
Rift valley fever								
Melioidosis								
Legionellosis	3	3	2	2	29	13	298	
Leptospirosis							2	
Rocky mountain spotted fever								

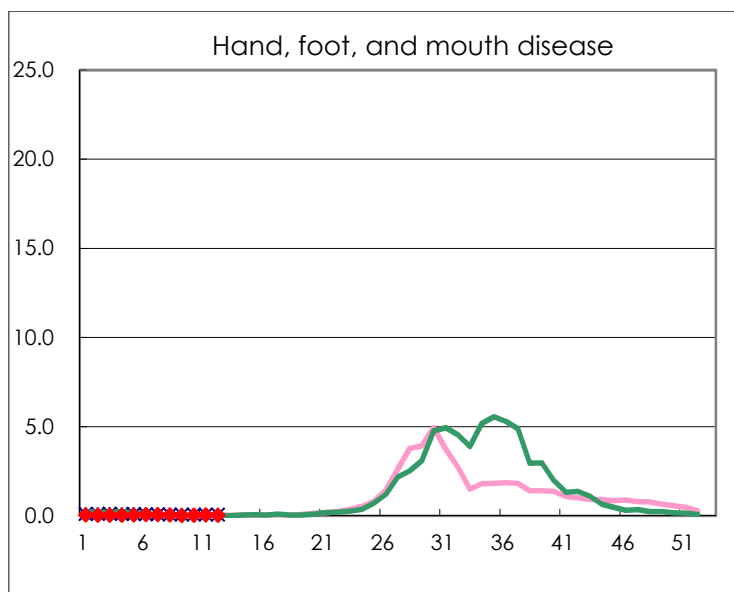
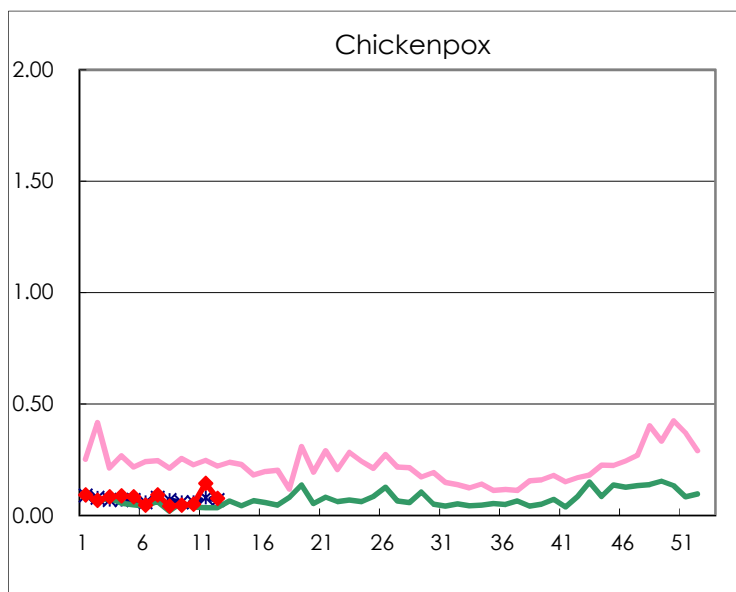
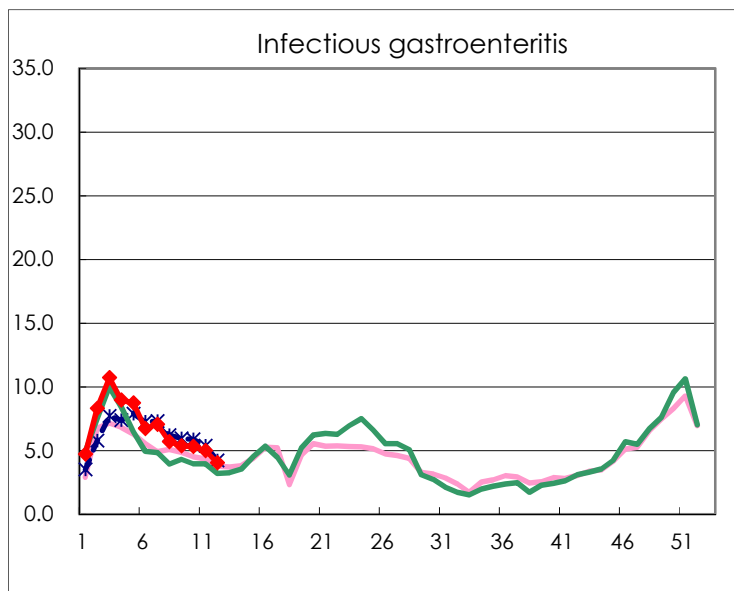
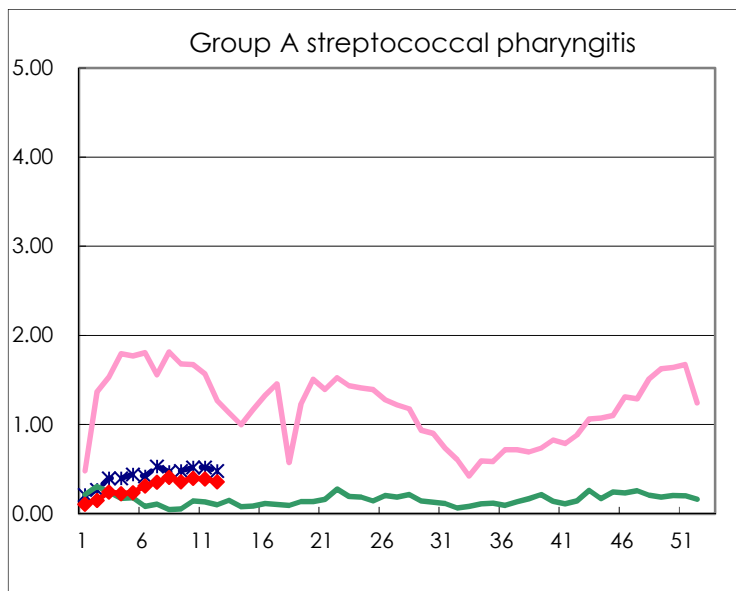
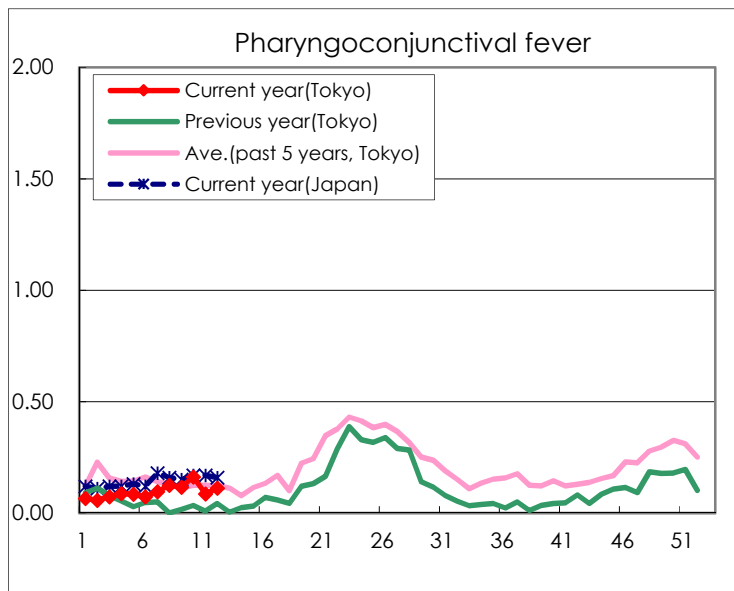
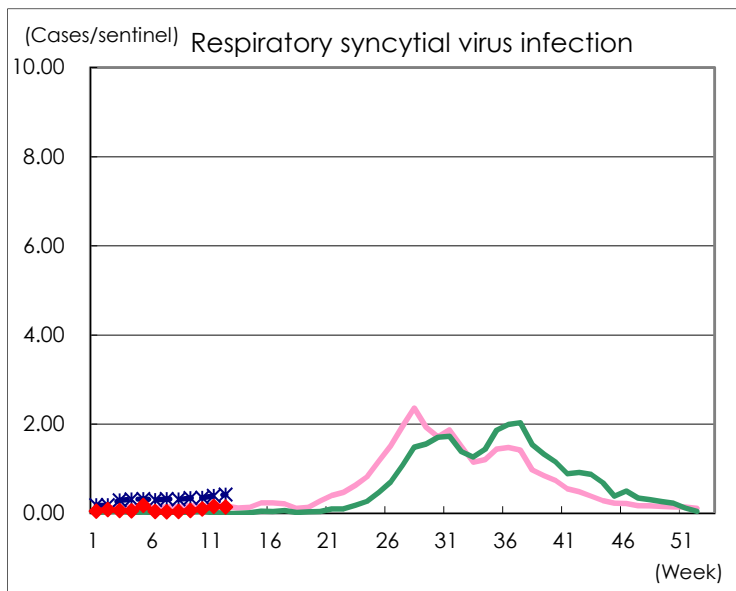
Category	Diseases	Tokyo					Japan	
		9th	10th	11th	12th	Cum 2023	12th	Cum 2023
V	Amebiasis	3	2	7		17	9	121
	Viral hepatitis(excluding hepatitis A and E)	1	2	4	2	14	2	54
	CRE infection	2	4	7	3	54	18	394
	Acute Flaccid Paralysis (excluding Acute poliomyelitis)					1	2	11
	Acute encephalitis(excluding JE and WNE)	1	1		1	8	1	100
	Cryptosporidiosis							1
	Creutzfeldt-Jakob disease					1		28
	Severe invasive streptococcal infections(TSLS)	2	4	2	1	28	10	198
	Acquired immunodeficiency syndrome (AIDS)	9	5	6	7	70	13	193
	Giardiasis					1	1	12
	Invasive <i>Haemophilus influenzae</i> disease	1		1	1	5	3	59
	Invasive meningococcal disease						2	4
	Invasive pneumococcal disease	4	1	4	2	38	27	398
	Varicella (limited to hospitalized case)	2	1	2	2	12	9	64
	Congenital rubella syndrome							
	Syphilis	76	73	84	61	854	148	3,152
	Disseminated cryptococcosis		1			6	4	45
	Tetanus						1	12
	Vancomycin-resistant <i>S. aureus</i> infection							
	Vancomycin-resistant <i>Enterococcus</i> infection	1	1	1	2	6	3	39
	Pertussis	1		1		13	4	125
Rubella							1	
Measles					1		1	
MDRA infection							5	

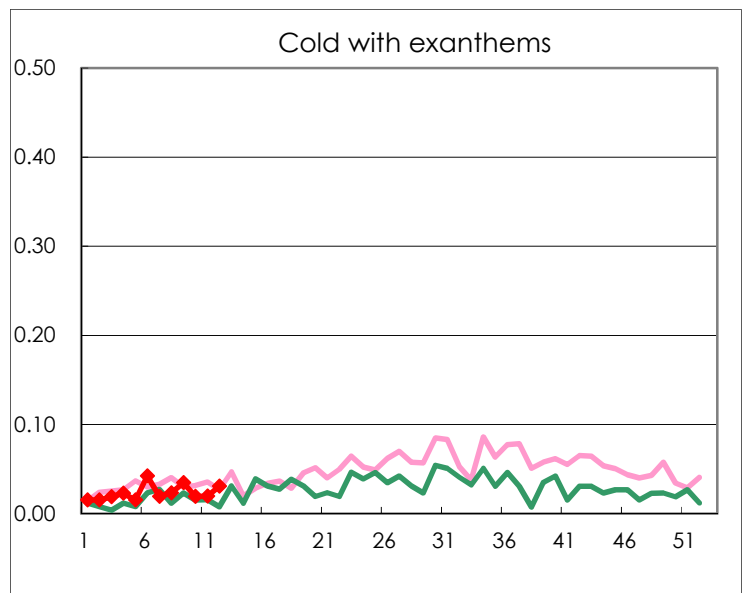
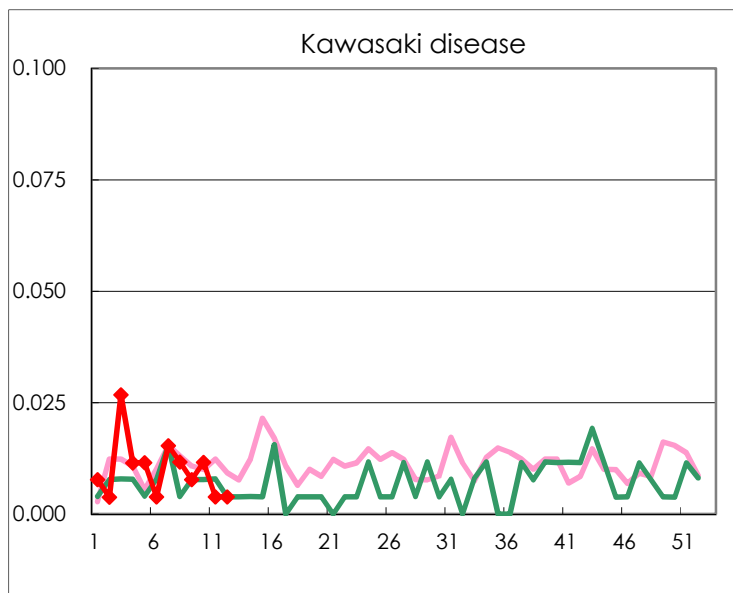
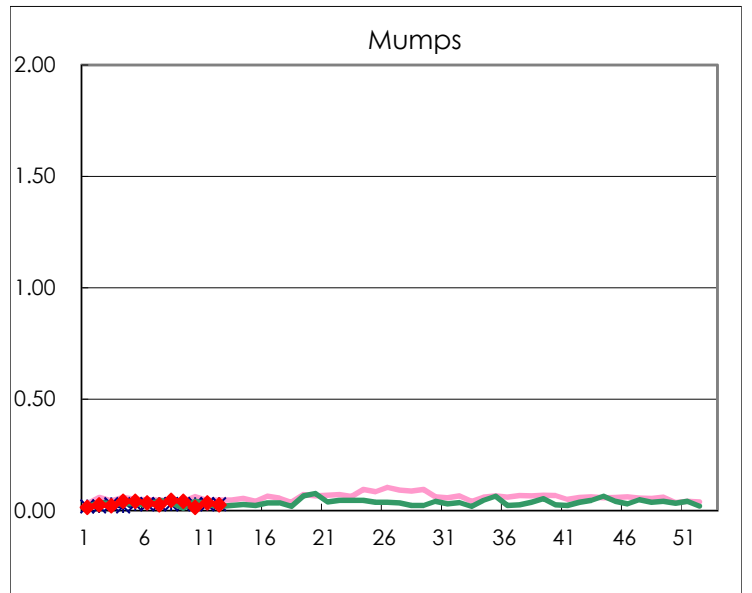
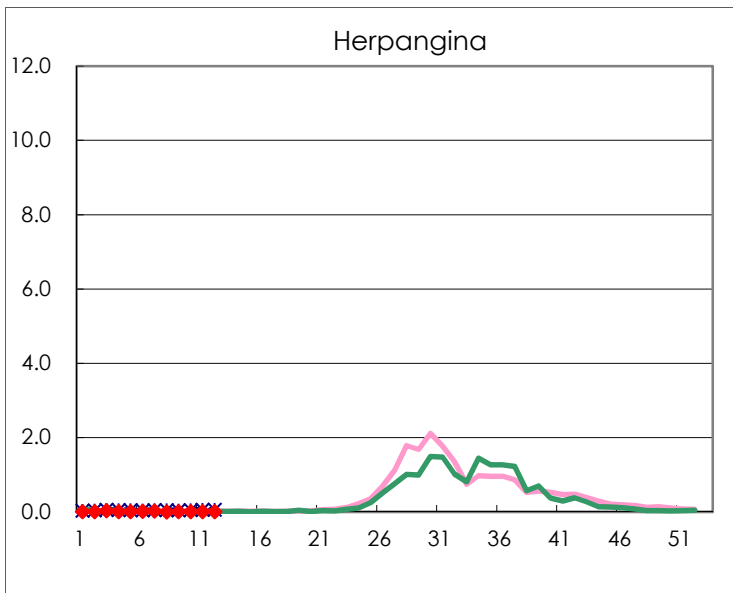
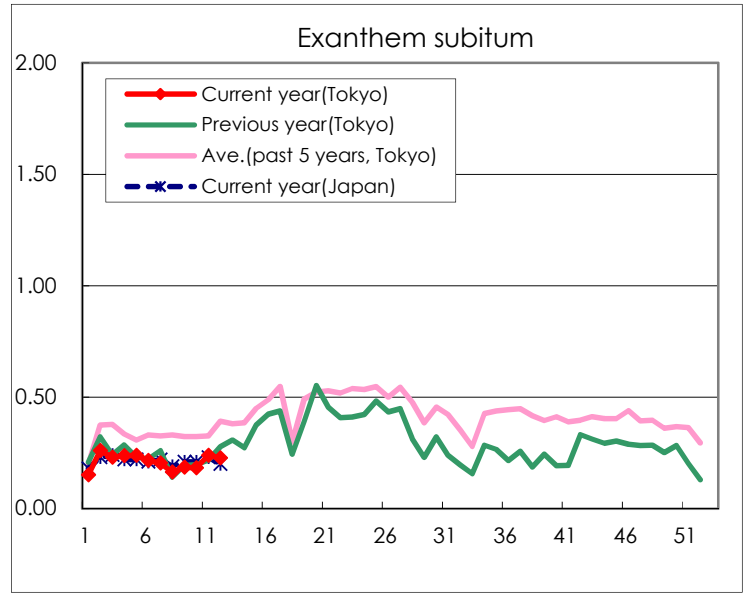
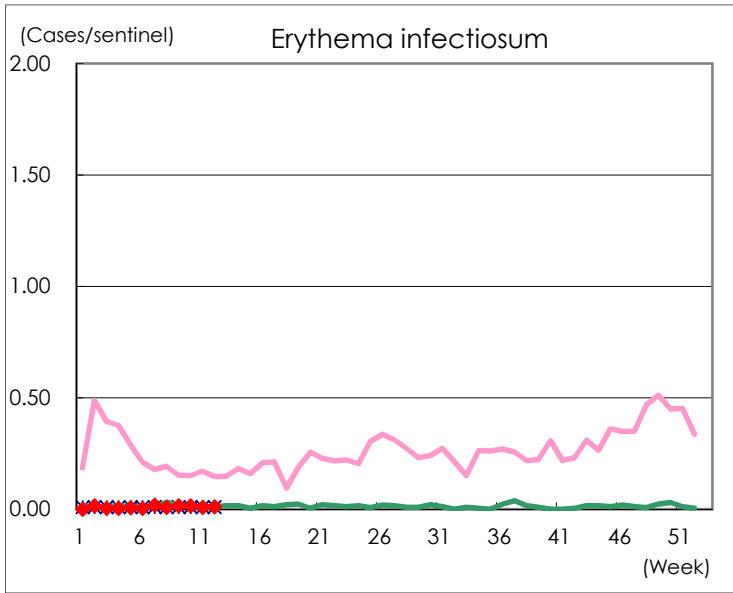
Number of patients with the diseases to be reported
by the designated clinics and hospitals

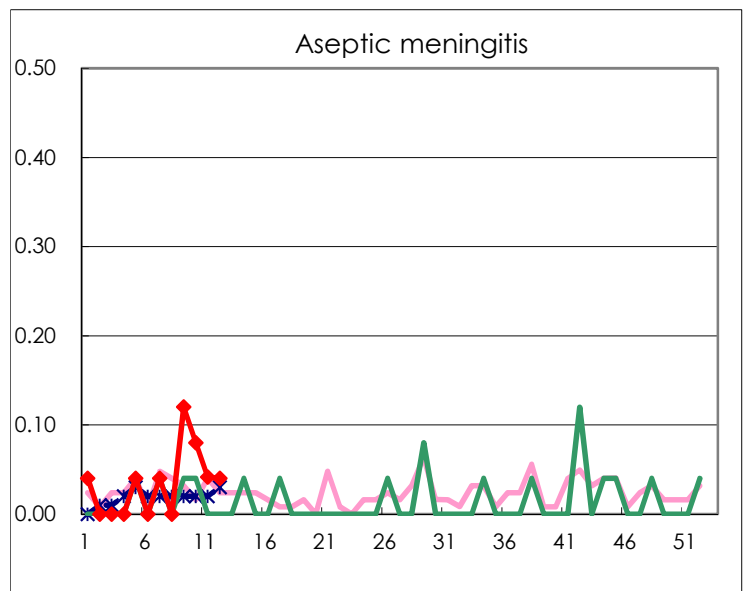
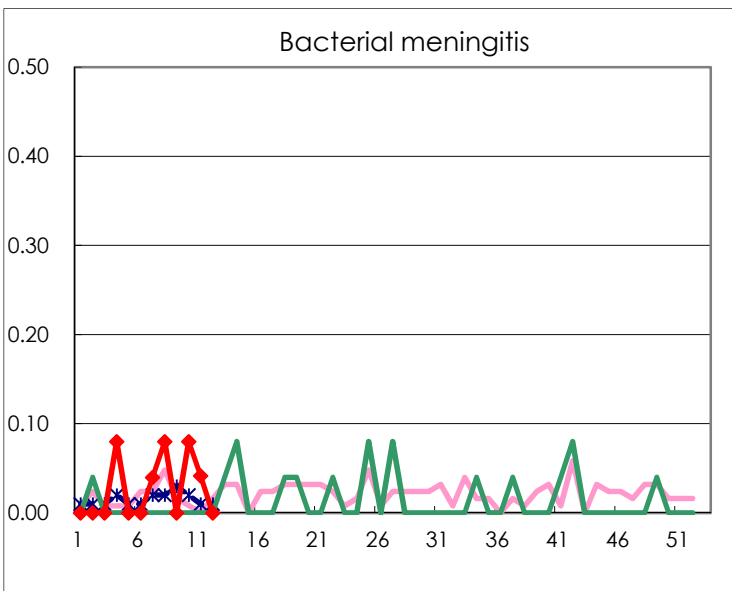
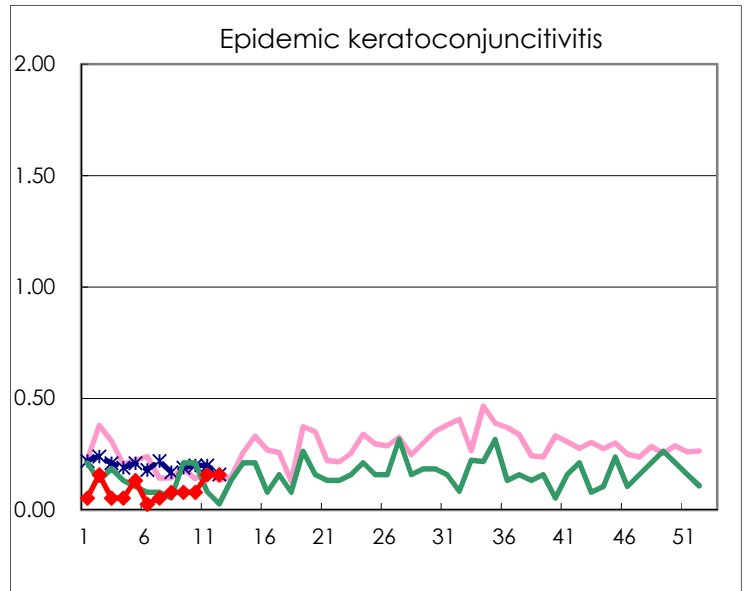
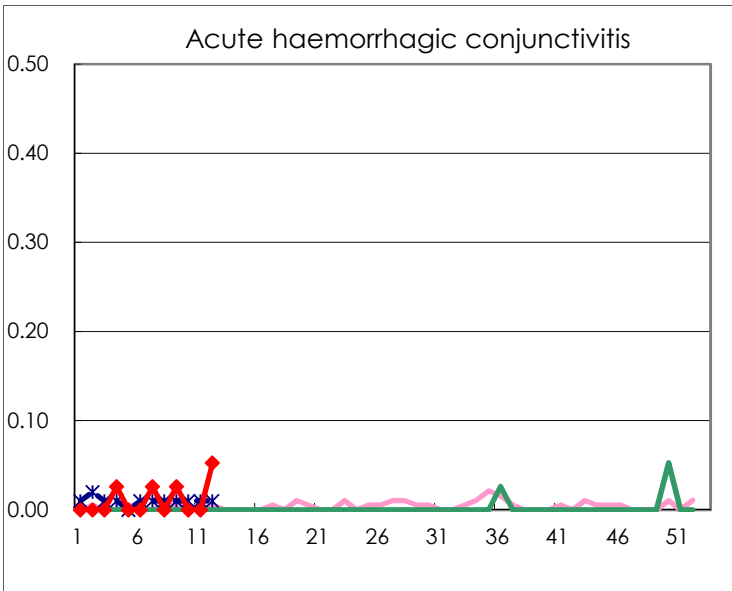
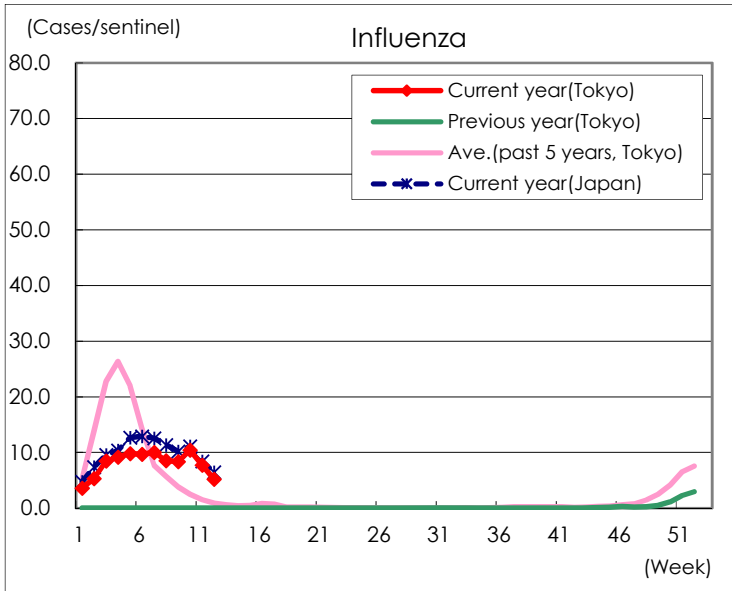
Diseases	Tokyo				
	9th	10th	11th	12th	/sentinel
Respiratory syncytial virus infection	15	26	39	37	0.14
Pharyngoconjunctival fever	30	42	22	29	0.11
Group A streptococcal pharyngitis	93	103	100	93	0.36
Infectious gastroenteritis	1,391	1,372	1,278	1,045	4.03
Chickenpox	12	13	37	20	0.08
Hand, foot, and mouth disease	3	5	11	6	0.02
Erythema infectiosum	4	4	2	3	0.01
Exanthem subitum	48	47	61	59	0.23
Herpangina	1	2	3	2	0.01
Mumps	11	4	9	7	0.03
Kawasaki disease	2	3	1	1	0.00
Cold with exanthems	9	5	5	8	0.03
Influenza	3,449	4,291	3,158	2,139	5.18
Acute hemorrhagic conjunctivitis	1			2	0.05
Epidemic keratoconjunctivitis	3	3	6	6	0.16
Bacterial meningitis		2	1		
Aseptic meningitis	3	2	1	1	0.04
<i>Mycoplasma pneumoniae</i>	1			1	0.04
Chlamydial pneumonia (excluding psittacosis)	1				
Infectious gastroenteritis (only by Rotavirus)	1	2			
Influenza-Associated Hospitalizations	18	19	12	13	0.52

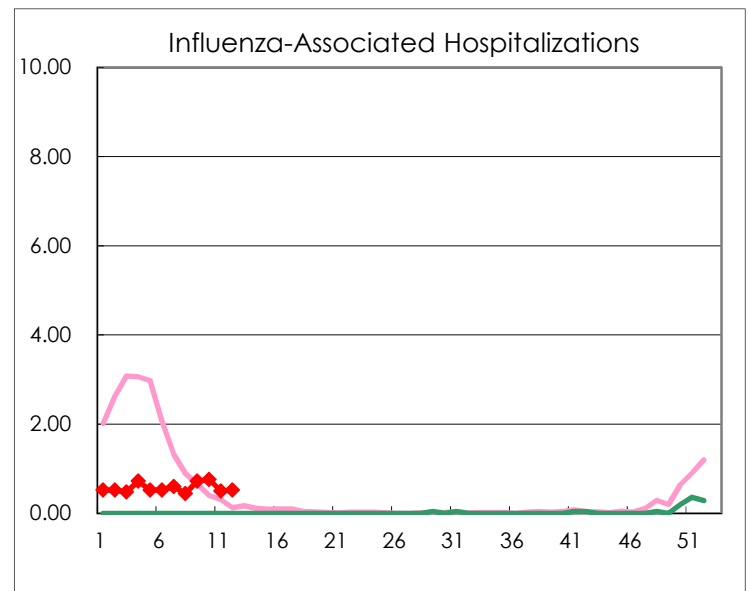
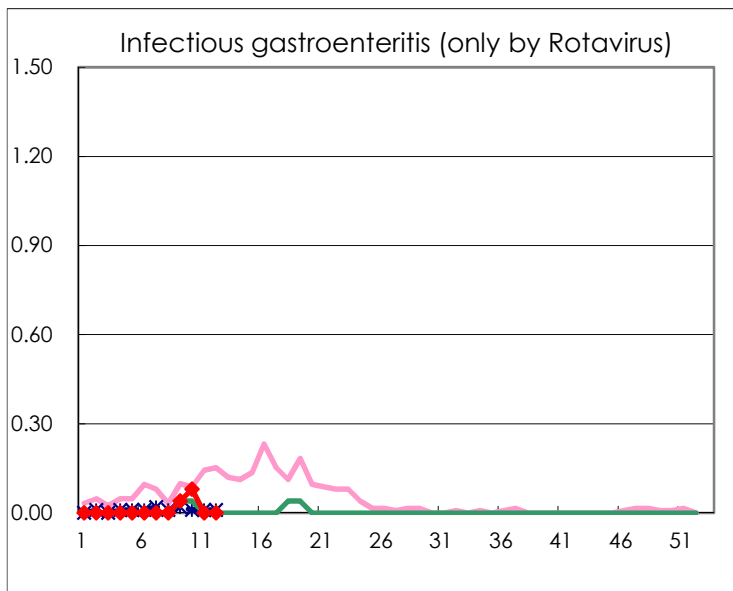
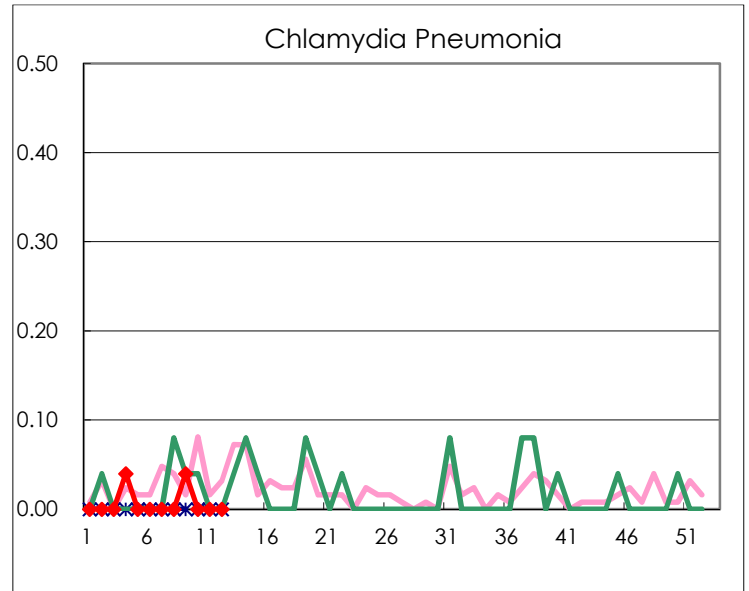
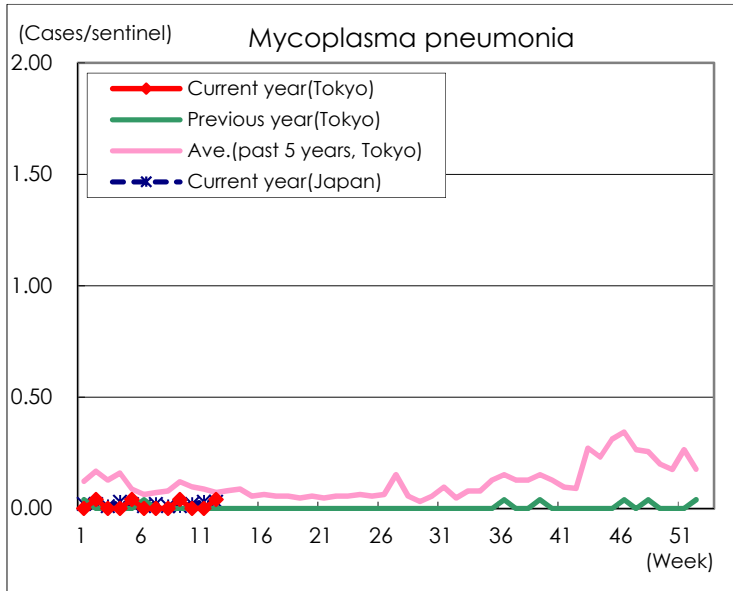
(Blank means 0.)

Disease Trend Graph (weekly reported cases per sentinel in comparison)









Number of sentinel facilities for weekly reporting		
Types of sentinels	Number of sentinels	Sentinels having reported
Pediatric	264	259
Influenza	419	413
Ophthalmic	39	38
Specially-designated	25	25