
INFECTIOUS DISEASES WEEKLY REPORT

TOKYO IDWR

Tokyo Metropolitan Infectious Disease Surveillance Center

9 May 2023 / Number 17
(4/24 ~ 4/30)

Surveillance System in Tokyo, Japan

The infectious diseases which all physicians must report
All physicians must report to health centers the incidence of the diseases which are shown at page one. Health centers electronically report the individual cases to Tokyo Metropolitan Infectious Disease Surveillance Center.

The infectious diseases required to be reported by the sentinels
The numbers of patients who visit the sentinel clinics or hospitals during a week are reported to health centers in Tokyo. And they electronically report the numbers to Tokyo Metropolitan Infectious Disease Surveillance Center. We have about 500 sentinel clinics and hospitals in Tokyo.

Tokyo Metropolitan Institute of Public Health

TEL:81-3-3363-3213 FAX:81-3-5332-7365

e-mail:tmiph@section.metro.tokyo.jp

URL:idsc.tmiph.metro.tokyo.lg.jp/

Number of patients with the diseases which all physicians must report

Category	Diseases	Tokyo					Japan	
		14th	15th	16th	17th	Cum 2023	17th	Cum 2023
I	Ebola hemorrhagic fever							
	Crimean-Congo hemorrhagic fever							
	Smallpox							
	South American hemorrhagic fever							
	Plague							
	Marburg disease							
	Lassa fever							
II	Acute poliomyelitis							
	Tuberculosis	34	43	44	36	603	249	4,182
	Diphtheria							
	Severe Acute Respiratory Syndrome(SARS)							
	Middle East Respiratory Syndrome (MERS)							
	Avian influenza H5N1							
	Avian influenza H7N9							
III	Cholera					1		1
	Shigellosis					2		9
	Enterohemorrhagic Escherichia coli infection	3	7	3	6	47	35	354
	Typhoid fever					2		14
	Paratyphoid fever					1		5
IV	Hepatitis E	3	2	2	5	75	9	195
	West Nile fever							
	Hepatitis A				1	4	1	22
	Echinococcosis							4
	Yellow fever							
	Psittacosis							2
	Omsk hemorrhagic fever							
	Relapsing fever							1
	Kyasanur forest disease							
	Q fever							
	Rabies							
	Coccidioidomycosis						1	1
	Monkeypox	8	2	6	6	94	5	118
	Zika virus infection							
	Severe Fever with Thrombocytopenia Syndrome						4	31
	Hemorrhagic fever with renal syndrome							
	Western equine encephalitis							
	Tick-borne encephalitis							
	Anthrax							
	Chikungunya fever							1
	Scrub typhus(Tsutsugamushi disease)					4	5	66
	Dengue fever		1			6	2	21
	Eastern equine encephalitis							
	Avian influenza (excluding H5N1 and H7N9)							
	Nipah virus infection							
	Japanese spotted fever						5	36
	Japanese encephalitis							
	Hantavirus pulmonary syndrome							
	Herpes B virus infection							
	Glanders							
	Brucellosis							
	Venezuelan equine encephalitis							
	Hendra virus infection							
Epidemic typhus								
Botulism								
Malaria					3		6	
Tularemia								
Lyme disease								
Lyssavirus infection(excluding rabies)								
Rift valley fever								
Melioidosis								
Legionellosis	3	8		2	46	27	429	
Leptospirosis							3	
Rocky mountain spotted fever								

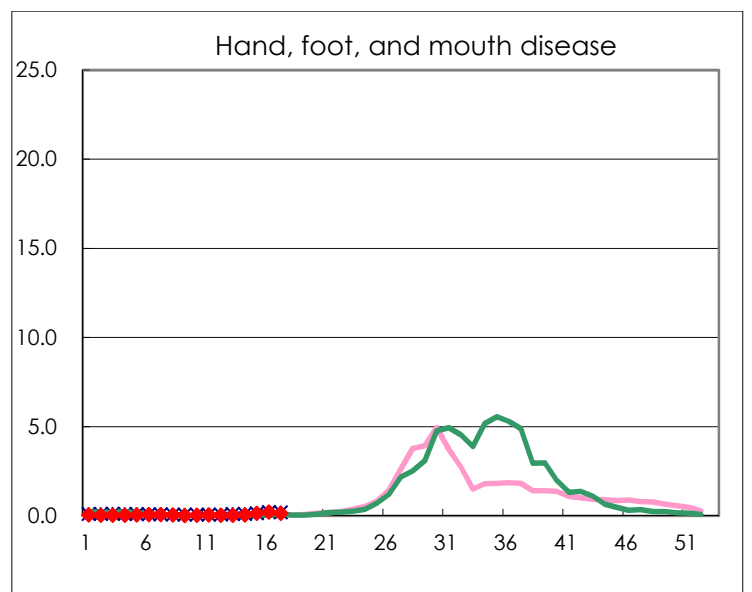
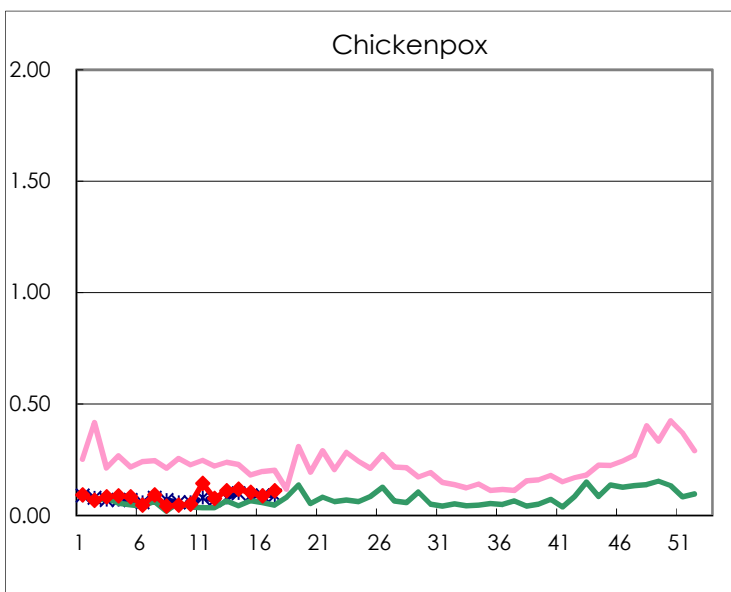
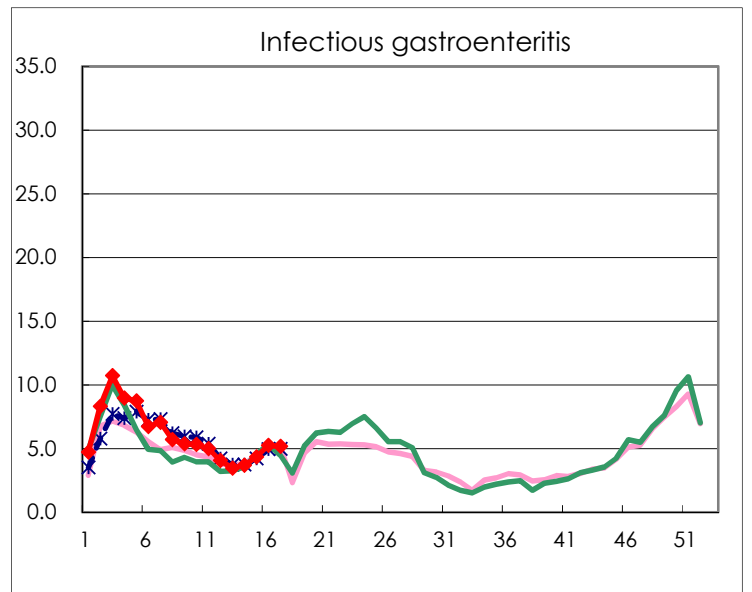
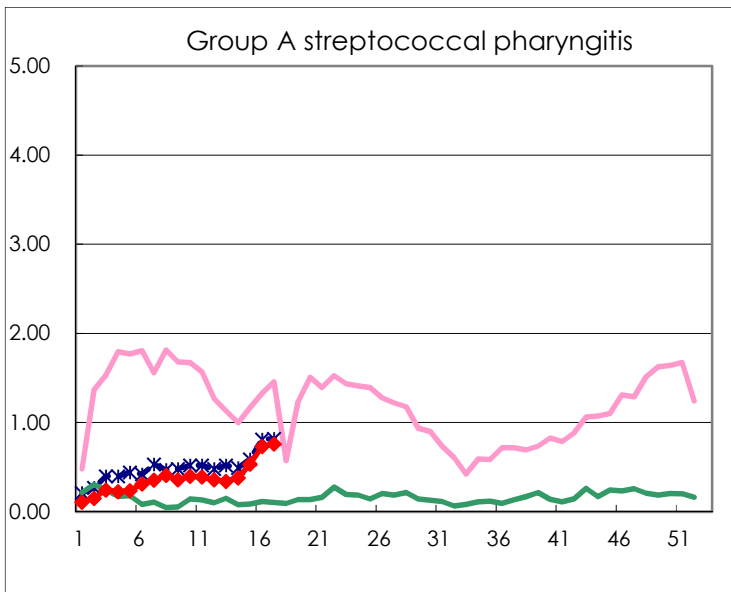
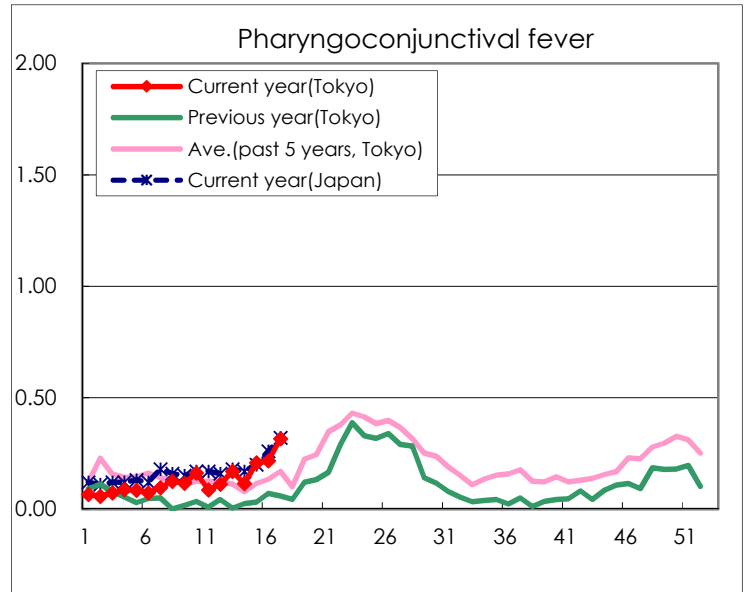
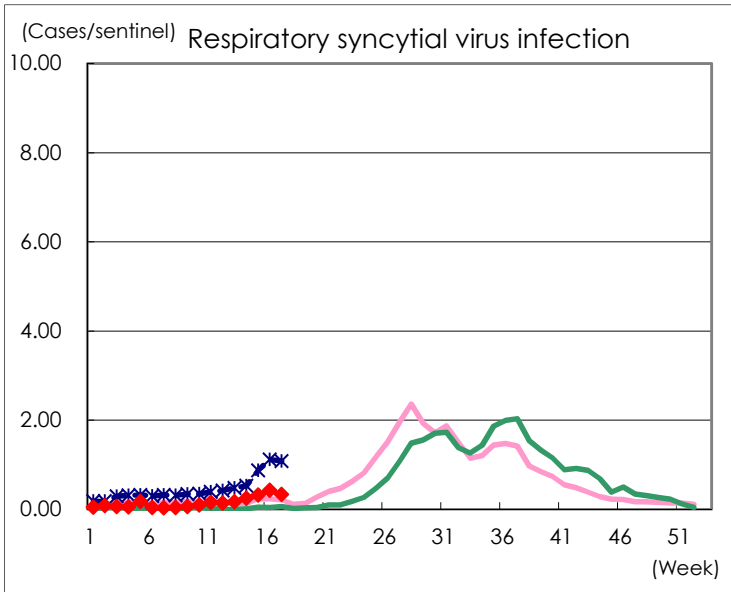
Category	Diseases	Tokyo					Japan	
		14th	15th	16th	17th	Cum 2023	17th	Cum 2023
V	Amebiasis	2	1	3	4	29	11	168
	Viral hepatitis(excluding hepatitis A and E)	1	2	1	2	20	6	87
	CRE infection	3	2	7	5	72	24	579
	Acute Flaccid Paralysis (excluding Acute poliomyelitis)		2			3	1	17
	Acute encephalitis(excluding JE and WNE)		1	2	1	13	9	152
	Cryptosporidiosis							2
	Creutzfeldt-Jakob disease	2	1			4	4	48
	Severe invasive streptococcal infections(TSLS)	1	2	5	3	42	13	283
	Acquired immunodeficiency syndrome (AIDS)	6	3	6	8	97	11	294
	Giardiasis		3			5	1	19
	Invasive <i>Haemophilus influenzae</i> disease		1			8	8	111
	Invasive meningococcal disease							4
	Invasive pneumococcal disease	4	4	4	1	56	31	577
	Varicella (limited to hospitalized case)	1	2	3	3	23	7	108
	Congenital rubella syndrome							
	Syphilis	71	86	79	66	1,255	185	4,699
	Disseminated cryptococcosis		1	2		9	4	67
	Tetanus				1	1	4	18
	Vancomycin-resistant <i>S. aureus</i> infection							
	Vancomycin-resistant <i>Enterococcus</i> infection					6	1	52
	Pertussis	2		1	5	23	16	196
Rubella	1				2		4	
Measles					1		3	
MDRA infection							5	

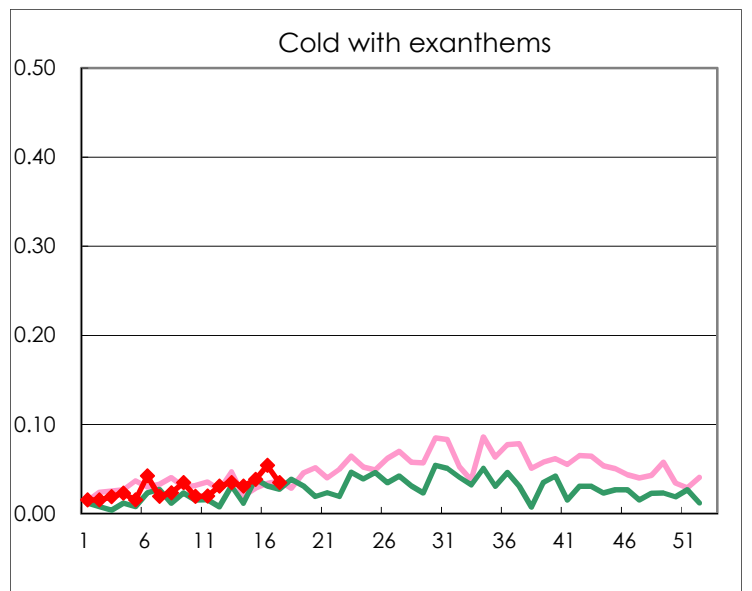
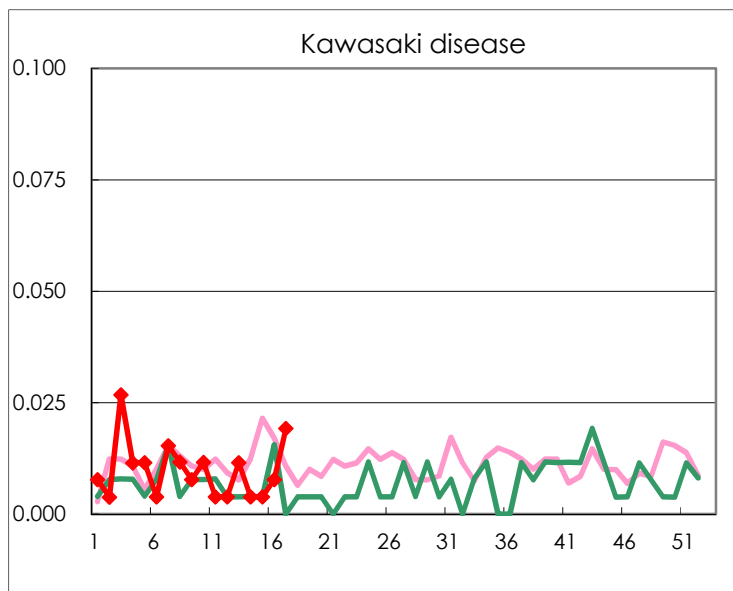
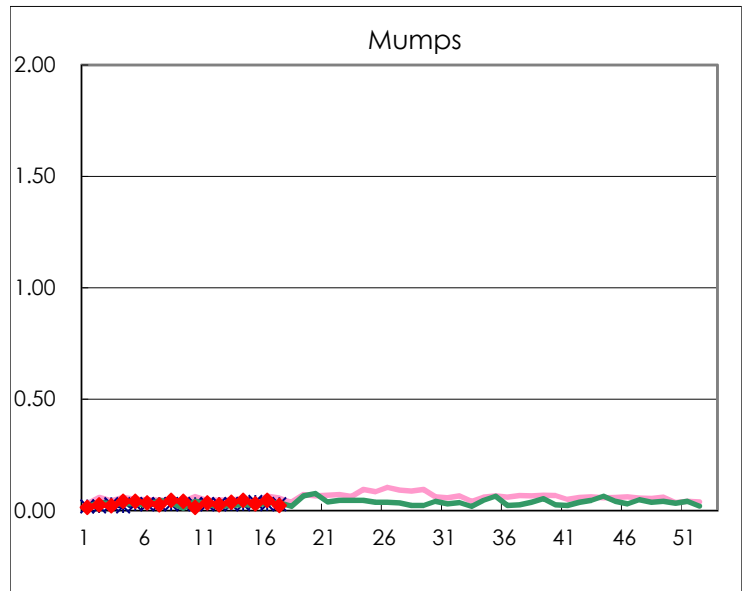
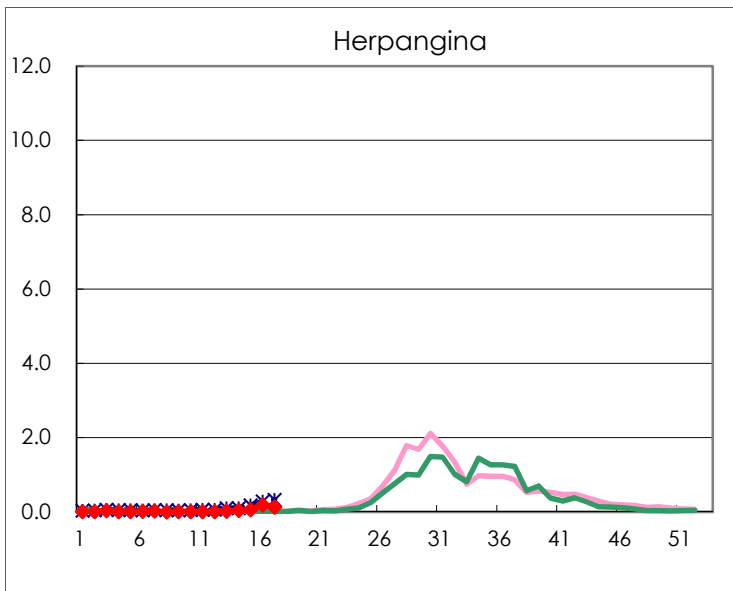
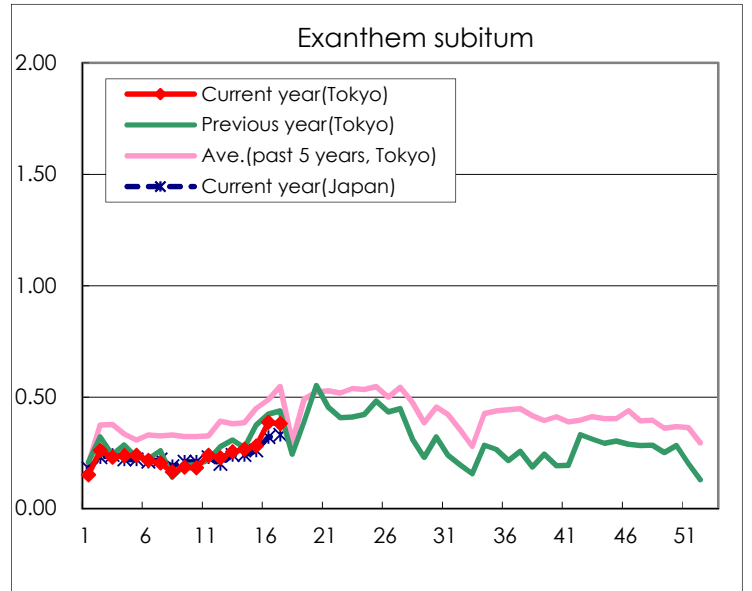
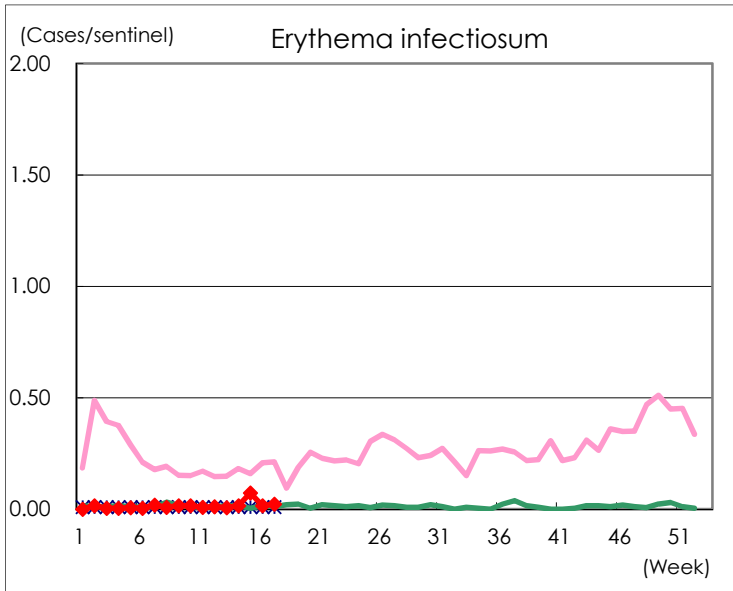
Number of patients with the diseases to be reported
by the designated clinics and hospitals

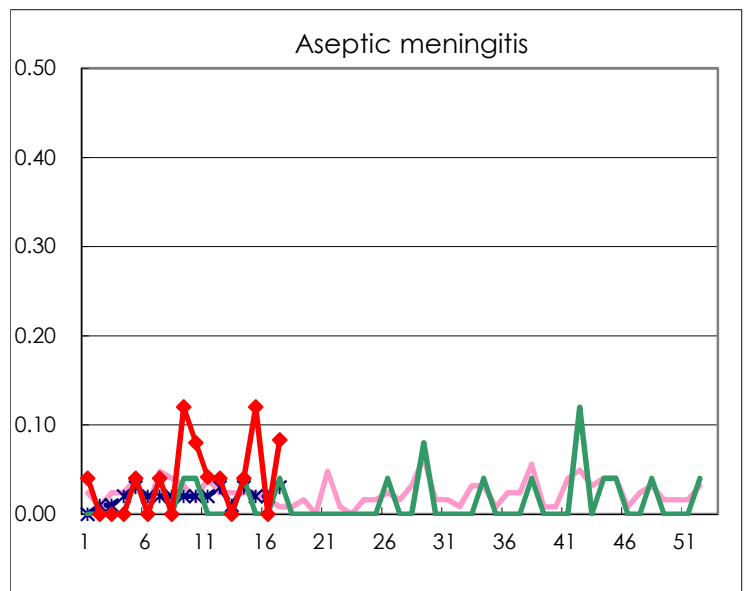
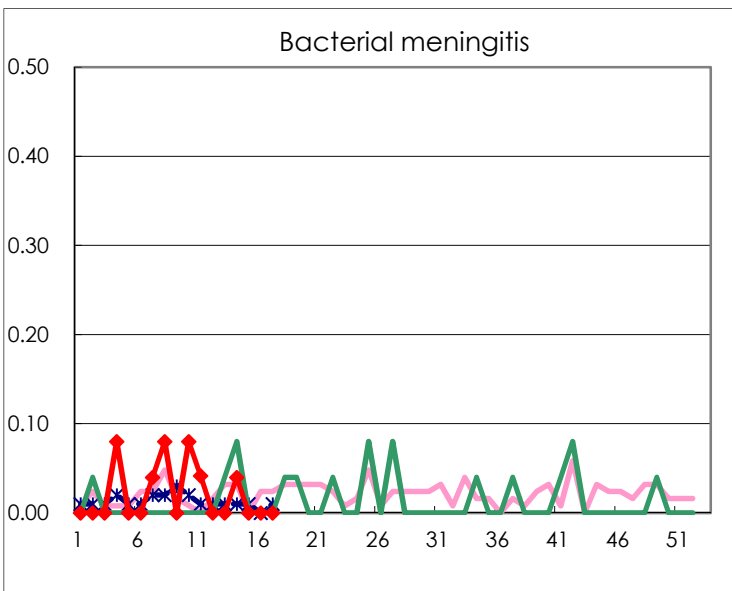
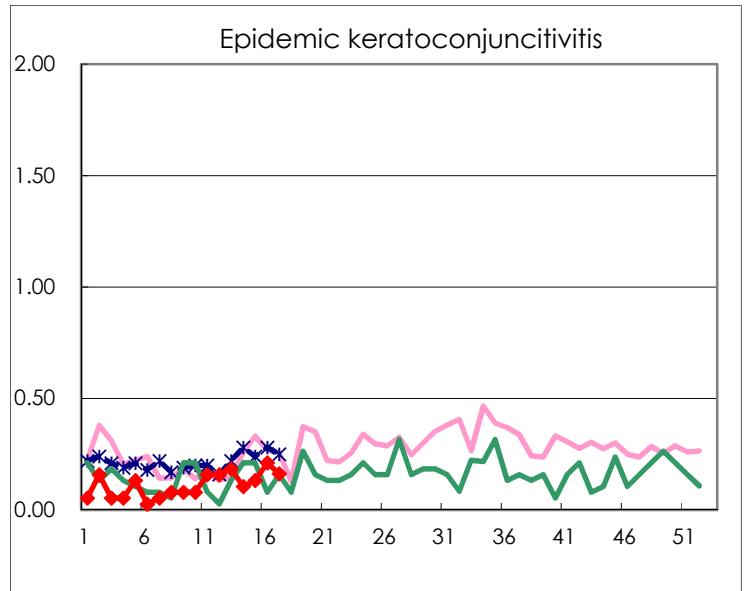
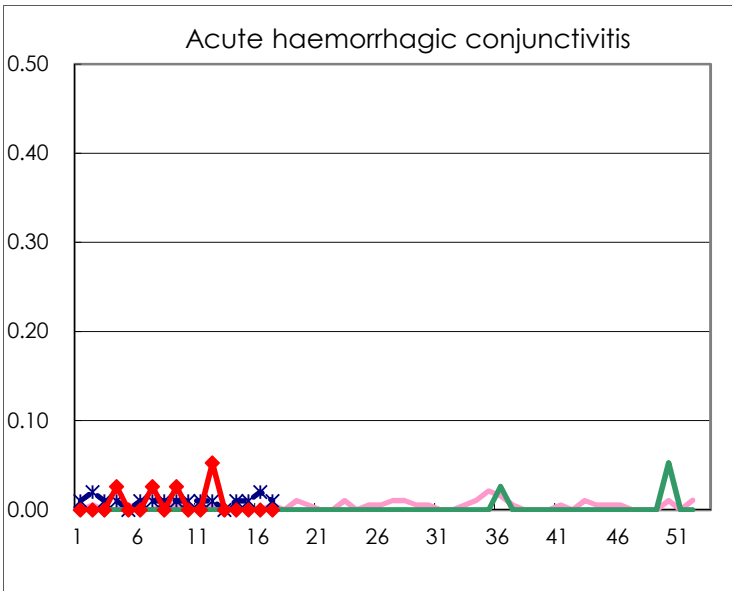
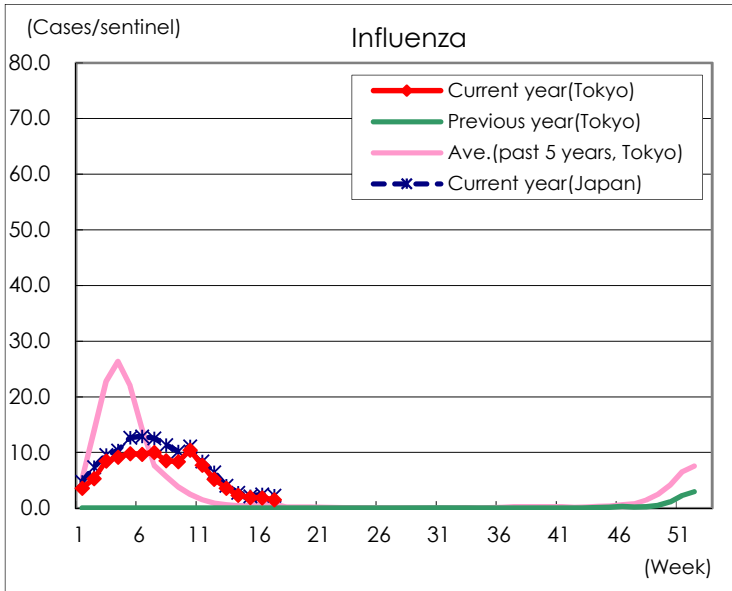
Diseases	Tokyo				
	14th	15th	16th	17th	/sentinel
Respiratory syncytial virus infection	64	84	110	87	0.33
Pharyngoconjunctival fever	30	54	56	82	0.32
Group A streptococcal pharyngitis	99	139	190	198	0.76
Infectious gastroenteritis	954	1,130	1,354	1,341	5.16
Chickenpox	31	27	23	29	0.11
Hand, foot, and mouth disease	11	35	52	35	0.13
Erythema infectiosum	4	19	4	6	0.02
Exanthem subitum	69	73	100	99	0.38
Herpangina	10	16	48	34	0.13
Mumps	12	8	12	6	0.02
Kawasaki disease	1	1	2	5	0.02
Cold with exanthems	8	10	14	9	0.03
Influenza	953	793	756	630	1.53
Acute hemorrhagic conjunctivitis					
Epidemic keratoconjunctivitis	4	5	8	6	0.16
Bacterial meningitis	1				
Aseptic meningitis	1	3		2	0.08
Mycoplasma pneumonia		1		1	0.04
Chlamydial pneumonia (excluding psittacosis)			4		
Infectious gastroenteritis (only by Rotavirus)					
Influenza-Associated Hospitalizations	5	10	6	3	0.12

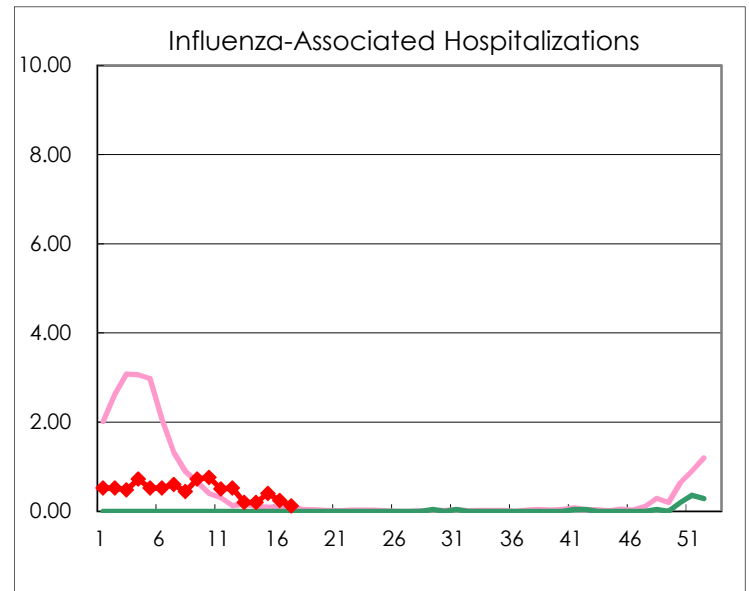
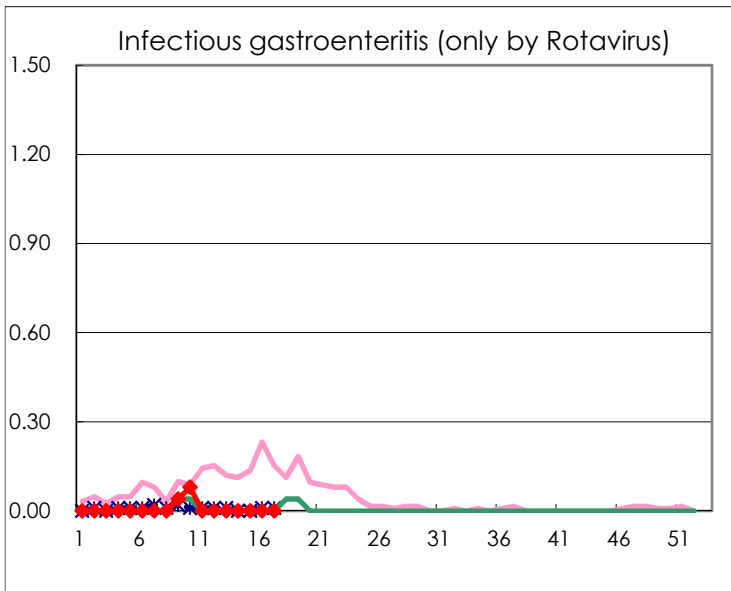
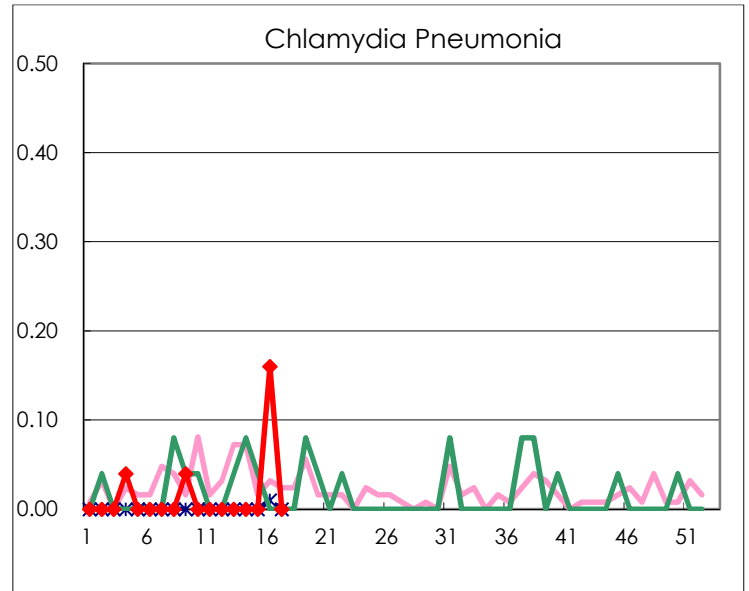
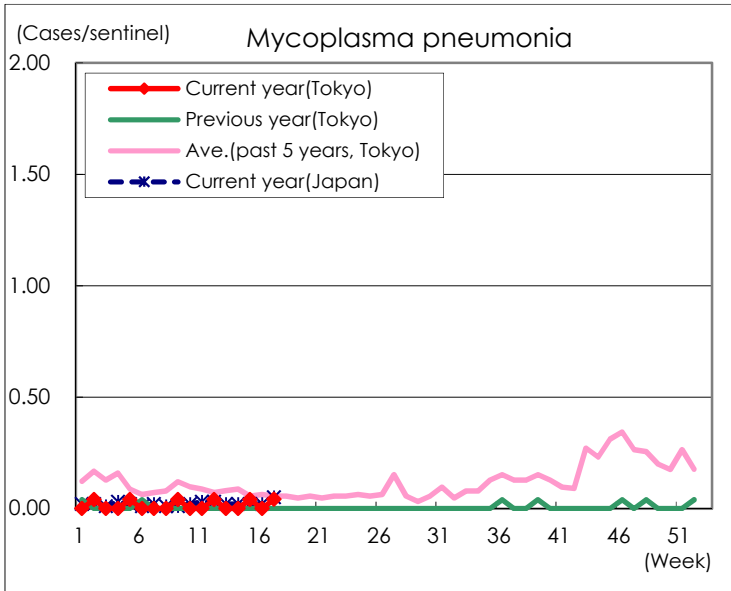
(Blank means 0.)

Disease Trend Graph (weekly reported cases per sentinel in comparison)









Number of sentinel facilities for weekly reporting		
Types of sentinels	Number of sentinels	Sentinels having reported
Pediatric	264	260
Influenza	419	412
Ophthalmic	39	37
Specially-designated	25	24