
INFECTIOUS DISEASES WEEKLY REPORT

TOKYO IDWR

Tokyo Metropolitan Infectious Disease Surveillance Center

18 May 2023 / Number 19
(5/8 ~ 5/14)

Surveillance System in Tokyo, Japan

The infectious diseases which all physicians must report
All physicians must report to health centers the incidence of the diseases which are shown at page one. Health centers electronically report the individual cases to Tokyo Metropolitan Infectious Disease Surveillance Center.

The infectious diseases required to be reported by the sentinels
The numbers of patients who visit the sentinel clinics or hospitals during a week are reported to health centers in Tokyo. And they electronically report the numbers to Tokyo Metropolitan Infectious Disease Surveillance Center. We have about 500 sentinel clinics and hospitals in Tokyo.

Tokyo Metropolitan Institute of Public Health

TEL:81-3-3363-3213 FAX:81-3-5332-7365

e-mail:tmiph@section.metro.tokyo.jp

URL:idsc.tmiph.metro.tokyo.lg.jp/

Number of patients with the diseases which all physicians must report

Category	Diseases	Tokyo					Japan	
		16th	17th	18th	19th	Cum 2023	19th	Cum 2023
I	Ebola hemorrhagic fever							
	Crimean-Congo hemorrhagic fever							
	Smallpox							
	South American hemorrhagic fever							
	Plague							
	Marburg disease							
	Lassa fever							
II	Acute poliomyelitis							
	Tuberculosis	44	36	16	38	657	239	4,612
	Diphtheria							
	Severe Acute Respiratory Syndrome(SARS)							
	Middle East Respiratory Syndrome (MERS)							
	Avian influenza H5N1							
III	Avian influenza H7N9							
	Cholera					1		1
	Shigellosis					2		9
	Enterohemorrhagic Escherichia coli infection	3	6	1	2	50	32	409
	Typhoid fever					2	2	16
IV	Paratyphoid fever					1		5
	Hepatitis E	2	5	2	8	85	21	224
	West Nile fever							
	Hepatitis A		1			4		22
	Echinococcosis							4
	Yellow fever							
	Psittacosis							2
	Omsk hemorrhagic fever							
	Relapsing fever							1
	Kyasanur forest disease							
	Q fever							
	Rabies							
	Coccidioidomycosis							1
	Monkeypox	6	6	6	10	110	14	139
	Zika virus infection							
	Severe Fever with Thrombocytopenia Syndrome						8	43
	Hemorrhagic fever with renal syndrome							
	Western equine encephalitis							
	Tick-borne encephalitis							
	Anthrax							
	Chikungunya fever							1
	Scrub typhus(Tsutsugamushi disease)					4	4	78
	Dengue fever					6		24
	Eastern equine encephalitis							
	Avian influenza (excluding H5N1 and H7N9)							
	Nipah virus infection							
	Japanese spotted fever						14	59
	Japanese encephalitis							
	Hantavirus pulmonary syndrome							
	Herpes B virus infection							
	Glanders							
	Brucellosis							
	Venezuelan equine encephalitis							
Hendra virus infection								
Epidemic typhus								
Botulism								
Malaria					3		6	
Tularemia								
Lyme disease								
Lyssavirus infection(excluding rabies)								
Rift valley fever								
Melioidosis								
Legionellosis		2	1		47	31	489	
Leptospirosis							3	
Rocky mountain spotted fever								

Category	Diseases	Tokyo					Japan	
		16th	17th	18th	19th	Cum 2023	19th	Cum 2023
V	Amebiasis	3	4	2	3	34	7	184
	Viral hepatitis(excluding hepatitis A and E)	1	2		2	22	7	98
	CRE infection	7	6		3	76	29	642
	Acute Flaccid Paralysis (excluding Acute poliomyelitis)					3	1	18
	Acute encephalitis(excluding JE and WNE)	2	1	1		14	3	163
	Cryptosporidiosis							2
	Creutzfeldt-Jakob disease					5	2	52
	Severe invasive streptococcal infections(TSLS)	5	3		2	44	6	304
	Acquired immunodeficiency syndrome (AIDS)	6	9	3	3	104	15	323
	Giardiasis				1	6		20
	Invasive <i>Haemophilus influenzae</i> disease	1		2		11	16	141
	Invasive meningococcal disease							5
	Invasive pneumococcal disease	4	2	4	7	68	50	669
	Varicella (limited to hospitalized case)	3	3		2	25	10	124
	Congenital rubella syndrome							
	Syphilis	79	74	34	69	1,366	218	5,164
	Disseminated cryptococcosis	2				9	1	70
	Tetanus		1			1		18
	Vancomycin-resistant <i>S. aureus</i> infection							
	Vancomycin-resistant <i>Enterococcus</i> infection				1	7	2	56
	Pertussis	1	5		3	26	14	220
Rubella					2	1	5	
Measles				2	* 2	3	7	
MDRA infection				1	1	1	6	

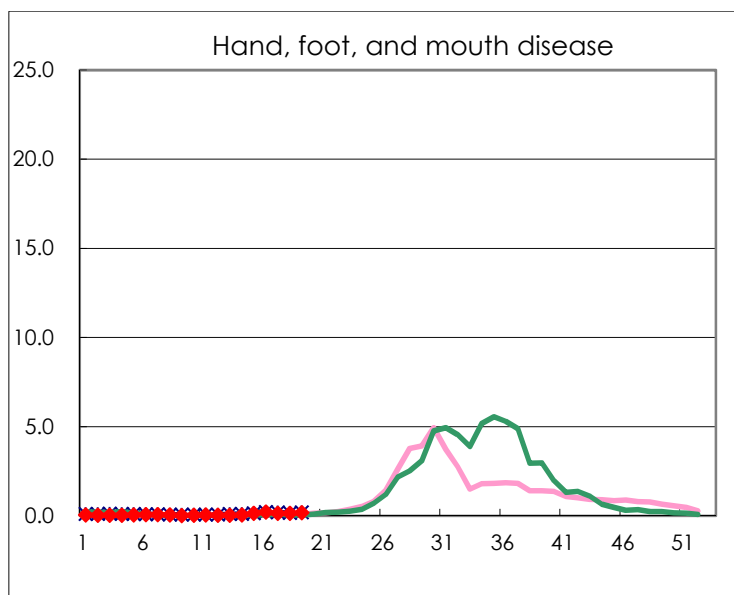
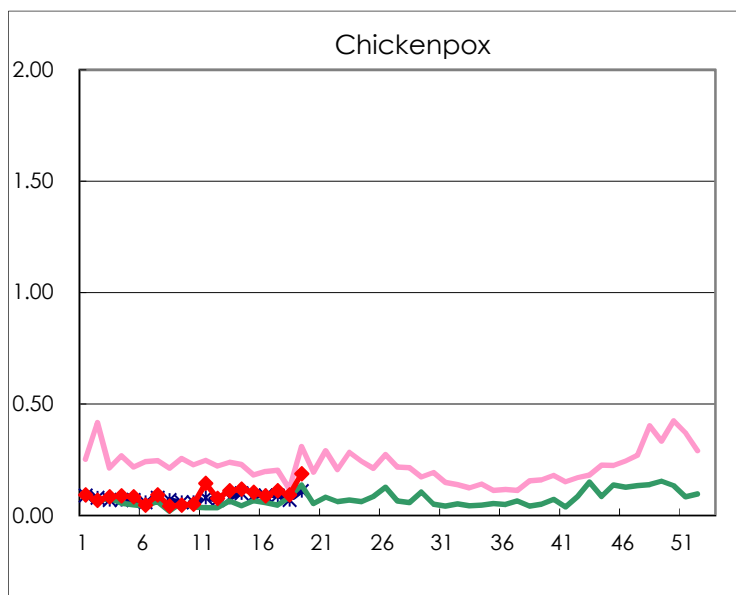
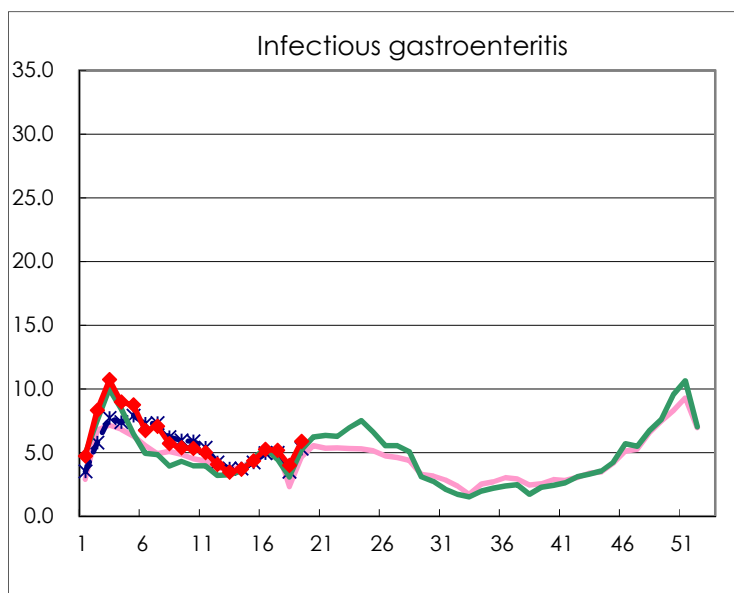
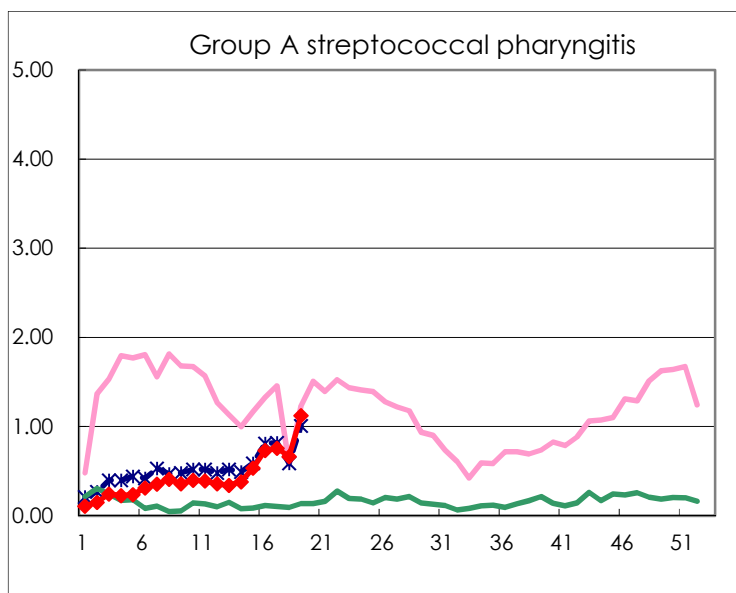
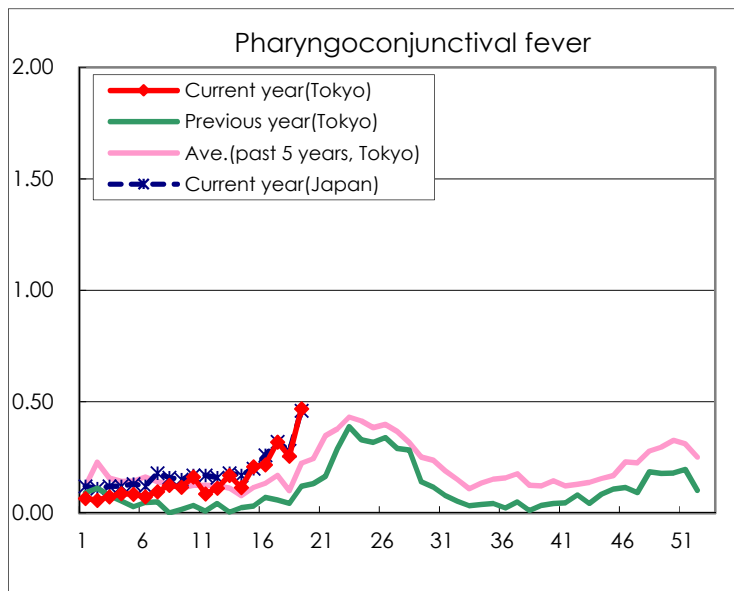
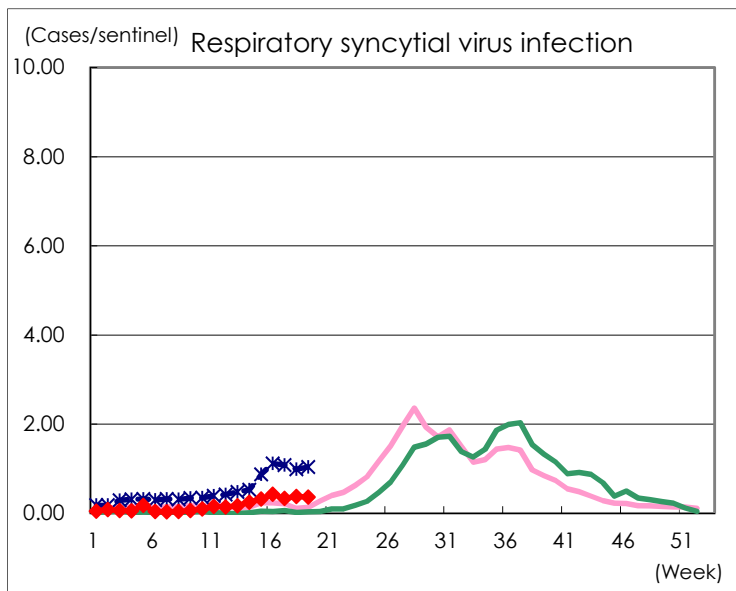
* One negative PCR test case is not included.

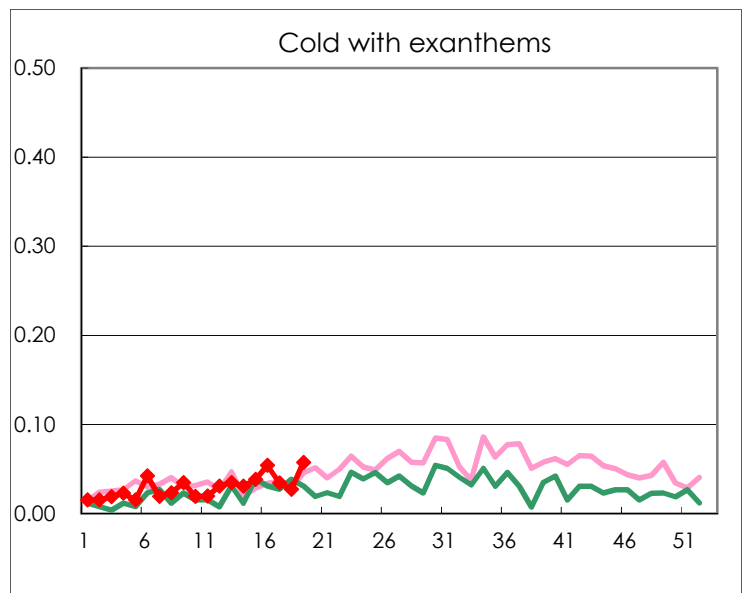
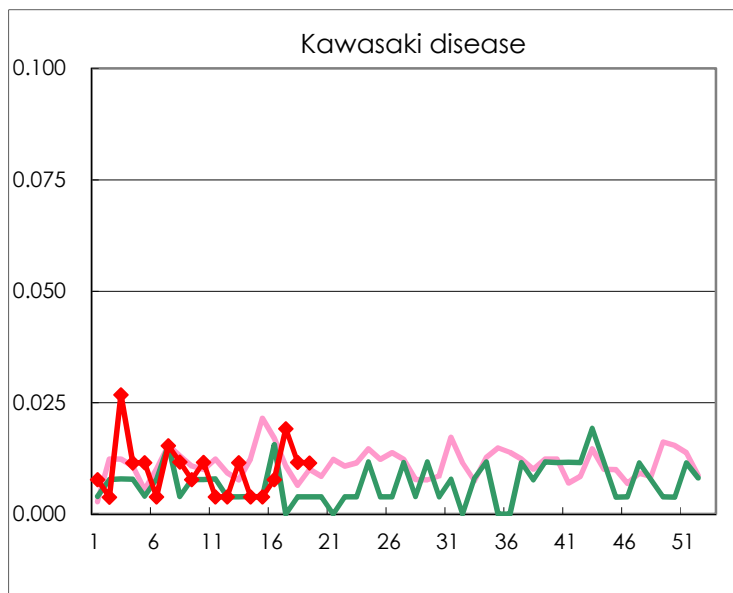
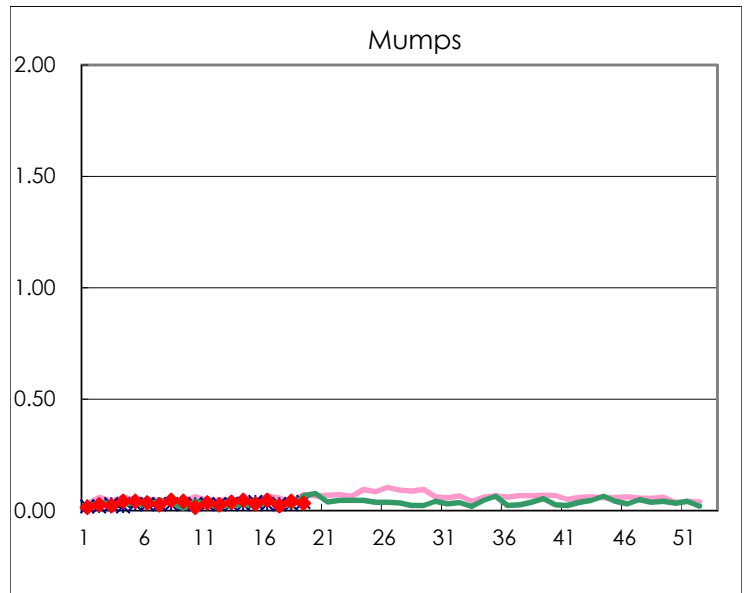
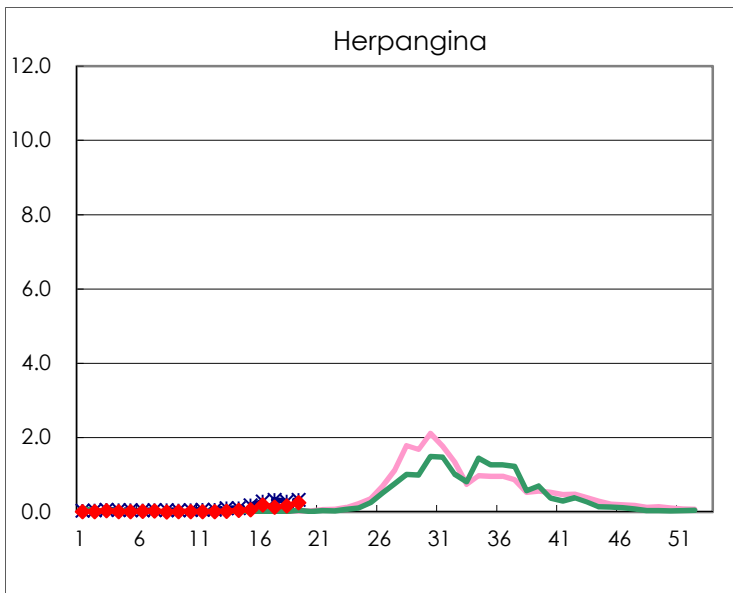
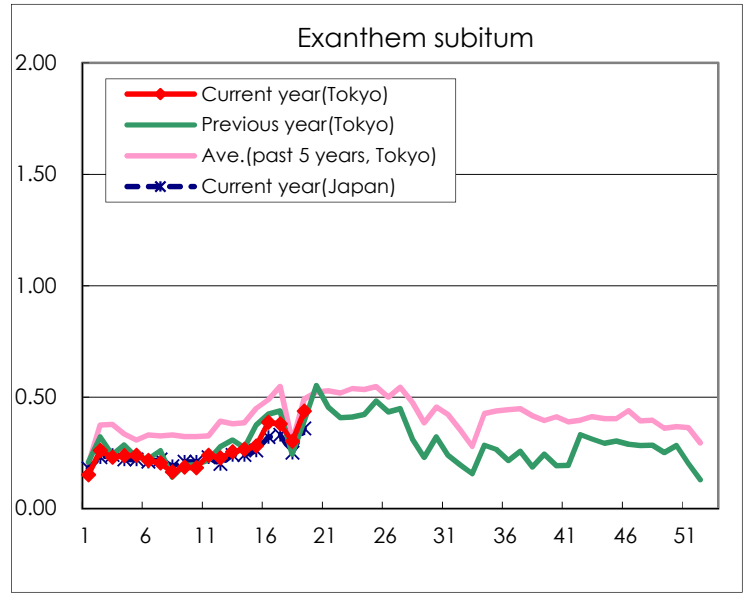
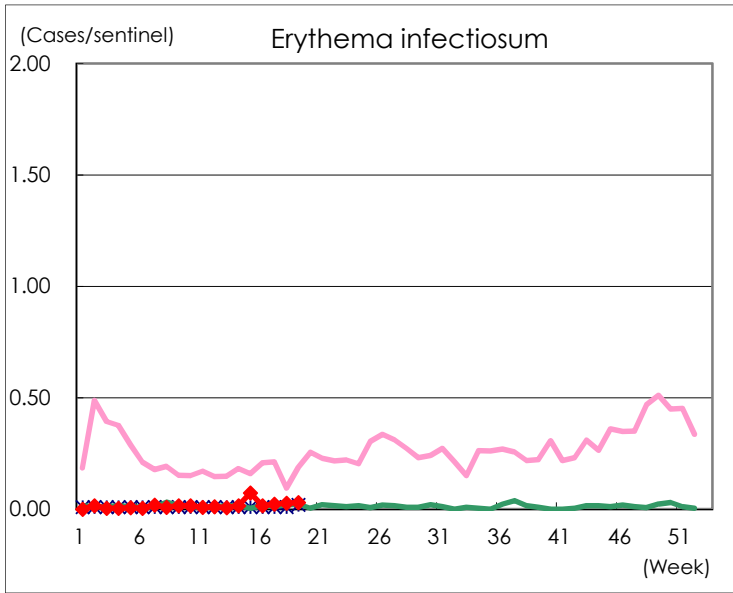
Number of patients with the diseases to be reported
by the designated clinics and hospitals

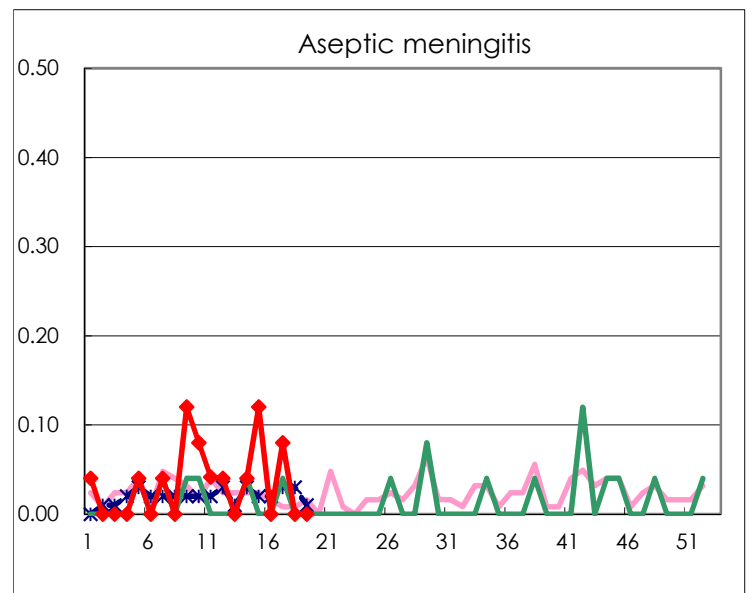
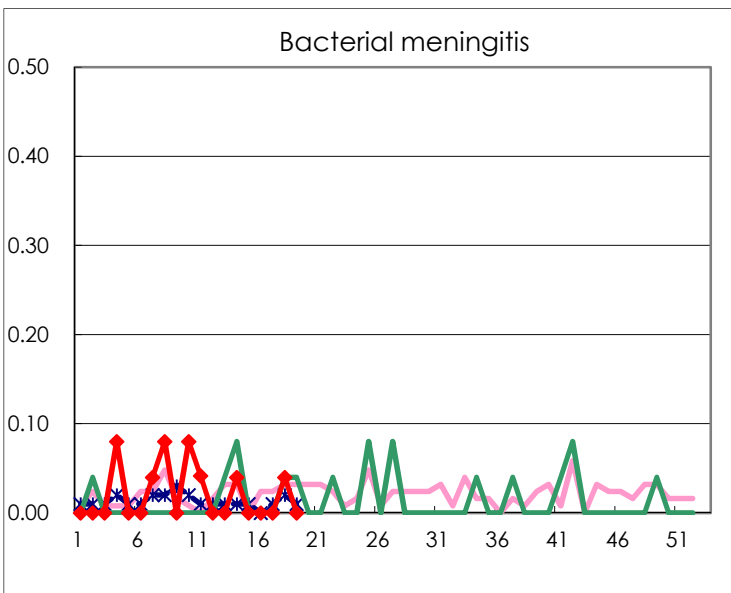
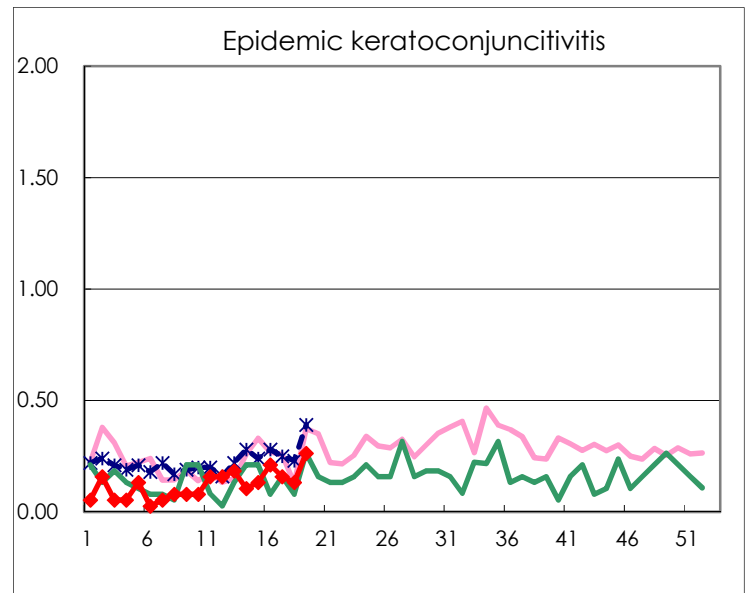
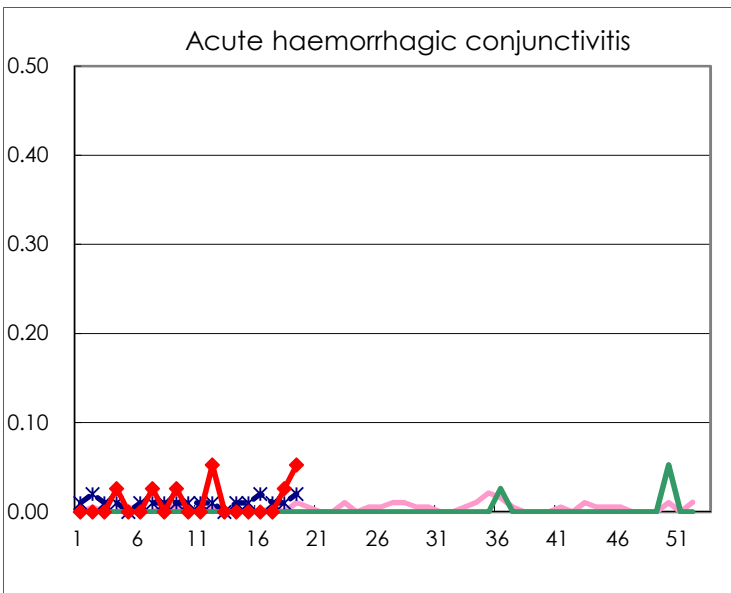
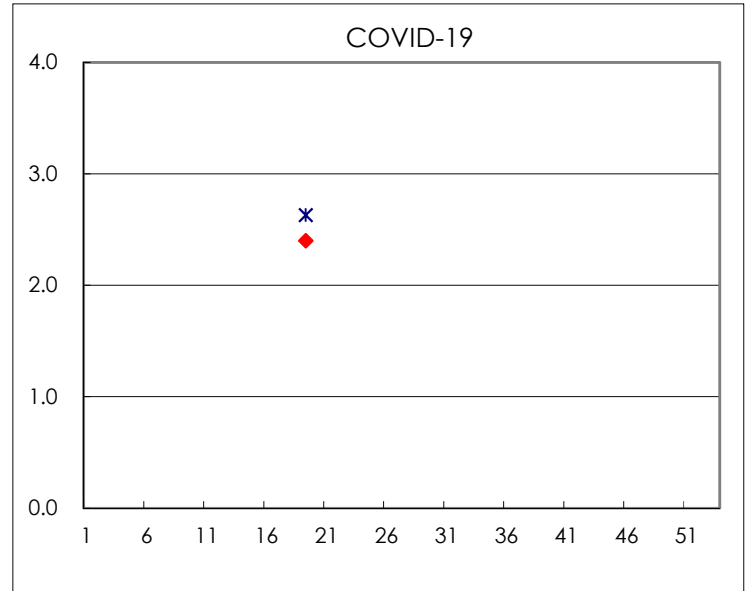
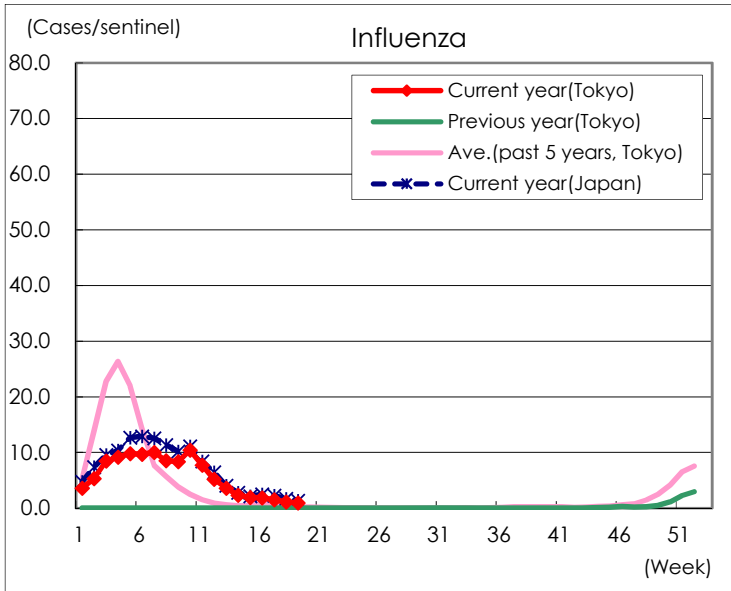
Diseases	Tokyo				
	16th	17th	18th	19th	/sentinel
Respiratory syncytial virus infection	110	87	98	95	0.36
Pharyngoconjunctival fever	56	83	66	122	0.47
Group A streptococcal pharyngitis	190	198	171	293	1.12
Infectious gastroenteritis	1,354	1,348	1,027	1,532	5.87
Chickenpox	23	29	24	49	0.19
Hand, foot, and mouth disease	52	35	33	44	0.17
Erythema infectiosum	4	6	7	8	0.03
Exanthem subitum	100	99	78	114	0.44
Herpangina	48	34	43	64	0.25
Mumps	12	6	11	9	0.03
Kawasaki disease	2	5	3	3	0.01
Cold with exanthems	14	9	7	15	0.06
Influenza	756	630	455	397	0.96
COVID-19				994	2.40
Acute hemorrhagic conjunctivitis			1	2	0.05
Epidemic keratoconjunctivitis	8	6	5	10	0.26
Bacterial meningitis			1		
Aseptic meningitis		2			
Mycoplasma pneumonia		1		1	0.04
Chlamydial pneumonia (excluding psittacosis)	4				
Infectious gastroenteritis (only by Rotavirus)					
Influenza-Associated Hospitalizations	6	3	5	2	0.08

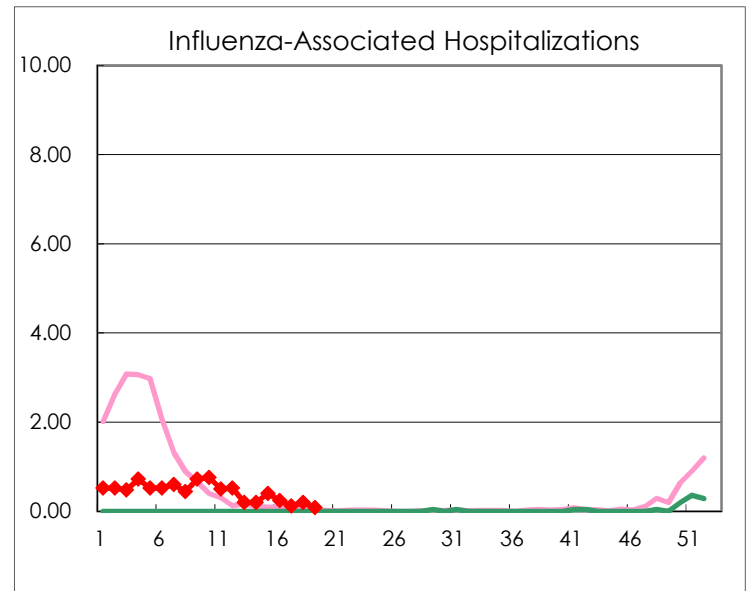
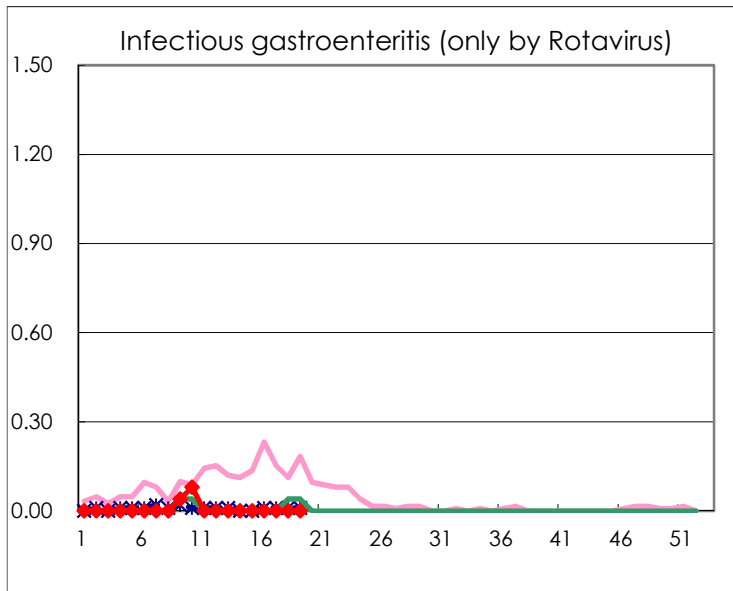
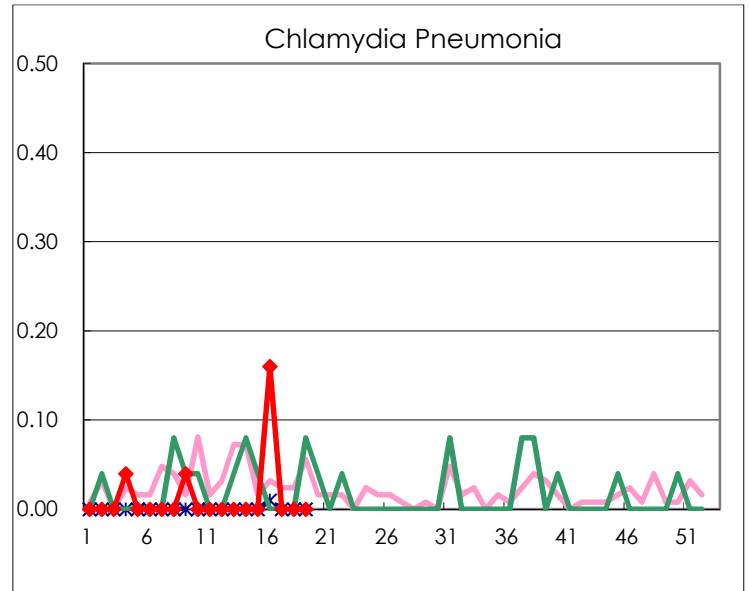
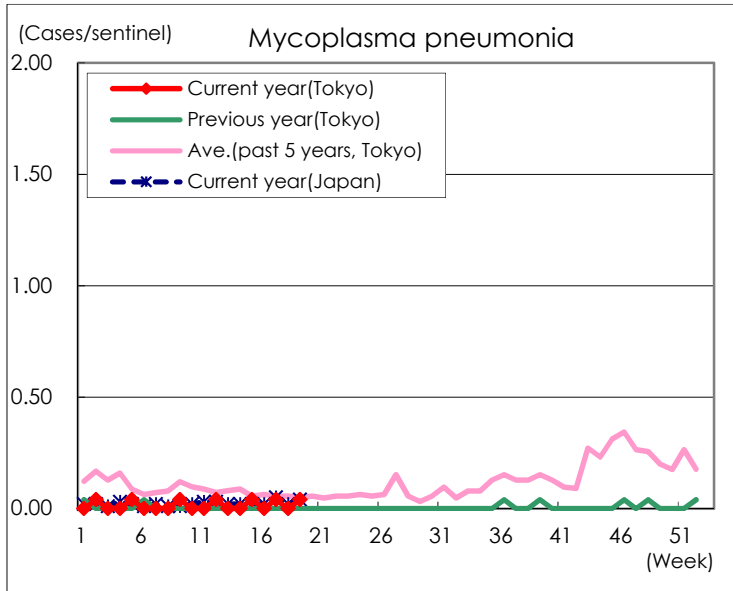
(Blank means 0.)

Disease Trend Graph (weekly reported cases per sentinel in comparison)









Number of sentinel facilities for weekly reporting		
Types of sentinels	Number of sentinels	Sentinels having reported
Pediatric	264	261
Influenza	419	414
Ophthalmic	39	38
Specially-designated	25	25