

---

INFECTIOUS DISEASES WEEKLY REPORT

# TOKYO IDWR

Tokyo Metropolitan Infectious Disease Surveillance Center

**1 June 2023 / Number 21**  
**( 5/22 ~ 5/28 )**

## Surveillance System in Tokyo, Japan

The infectious diseases which all physicians must report  
All physicians must report to health centers the incidence of the diseases which are shown at page one. Health centers electronically report the individual cases to Tokyo Metropolitan Infectious Disease Surveillance Center.

The infectious diseases required to be reported by the sentinels  
The numbers of patients who visit the sentinel clinics or hospitals during a week are reported to health centers in Tokyo. And they electronically report the numbers to Tokyo Metropolitan Infectious Disease Surveillance Center. We have about 500 sentinel clinics and hospitals in Tokyo.

Tokyo Metropolitan Institute of Public Health

TEL:81-3-3363-3213 FAX:81-3-5332-7365

e-mail:tmiph@section.metro.tokyo.jp

URL:idsc.tmiph.metro.tokyo.lg.jp/

---

Number of patients with the diseases which all physicians must report

Category	Diseases	Tokyo					Japan	
		18th	19th	20th	21st	Cum 2023	21st	Cum 2023
I	Ebola hemorrhagic fever							
	Crimean-Congo hemorrhagic fever							
	Smallpox							
	South American hemorrhagic fever							
	Plague							
	Marburg disease							
	Lassa fever							
II	Acute poliomyelitis							
	Tuberculosis	16	41	37	46	744	235	5,233
	Diphtheria							
	Severe Acute Respiratory Syndrome(SARS)							
	Middle East Respiratory Syndrome (MERS)							
	Avian influenza H5N1							
	Avian influenza H7N9							
III	Cholera					1		1
	Shigellosis					2		10
	Enterohemorrhagic Escherichia coli infection	1	2	2	8	60	88	571
	Typhoid fever					2	1	17
	Paratyphoid fever					1		5
IV	Hepatitis E	2	8	4		89	4	243
	West Nile fever							
	Hepatitis A					4	1	24
	Echinococcosis							5
	Mpox	6	10	10	5	125	6	160
	Yellow fever							
	Psittacosis						1	4
	Omsk hemorrhagic fever							
	Relapsing fever						1	4
	Kyasanur forest disease							
	Q fever							
	Rabies							
	Coccidioidomycosis							1
	Zika virus infection							
	Severe Fever with Thrombocytopenia Syndrome						5	55
	Hemorrhagic fever with renal syndrome							
	Western equine encephalitis							
	Tick-borne encephalitis							
	Anthrax							
	Chikungunya fever							1
	Scrub typhus(Tsutsugamushi disease)					4	4	86
	Dengue fever				2	8	4	28
	Eastern equine encephalitis							
	Avian influenza (excluding H5N1 and H7N9)							
	Nipah virus infection							
	Japanese spotted fever						13	83
	Japanese encephalitis							
	Hantavirus pulmonary syndrome							
	Herpes B virus infection							
	Glanders							
	Brucellosis							1
	Venezuelan equine encephalitis							
	Hendra virus infection							
Epidemic typhus								
Botulism								
Malaria					3		6	
Tularemia								
Lyme disease						1	2	
Lyssavirus infection(excluding rabies)								
Rift valley fever								
Melioidosis								
Legionellosis	1		5	5	57	40	571	
Leptospirosis						1	4	
Rocky mountain spotted fever								

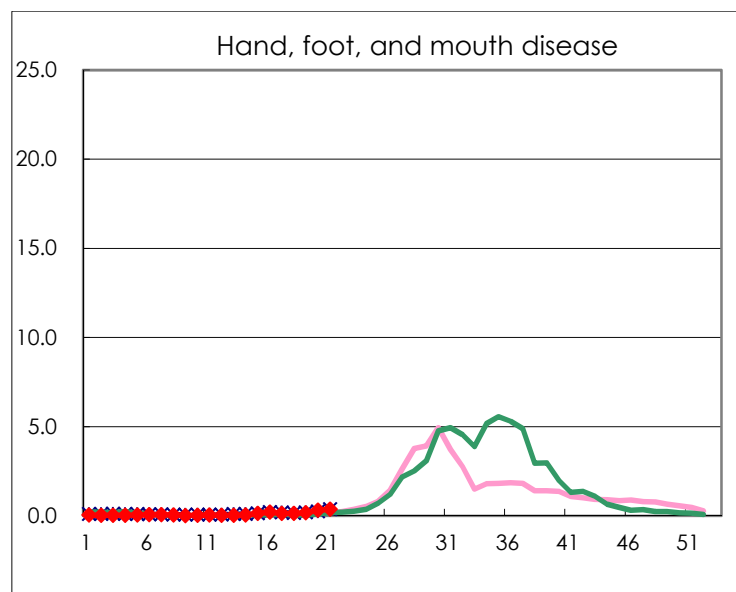
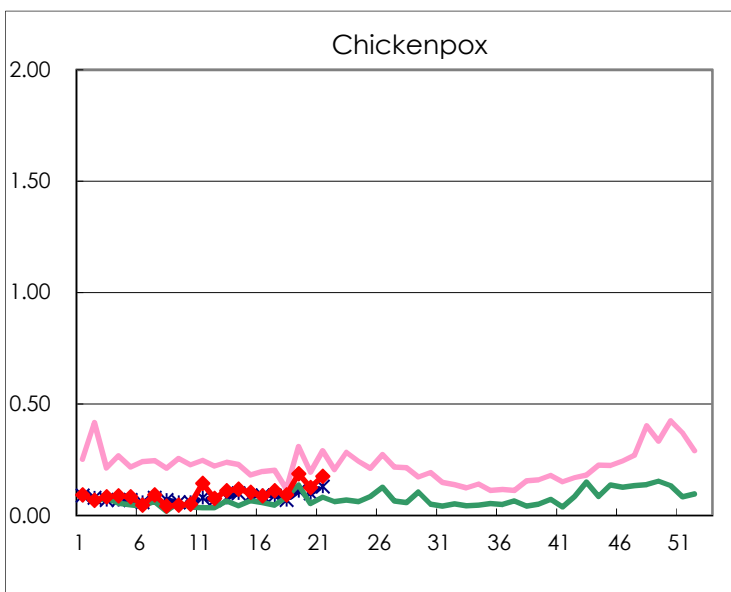
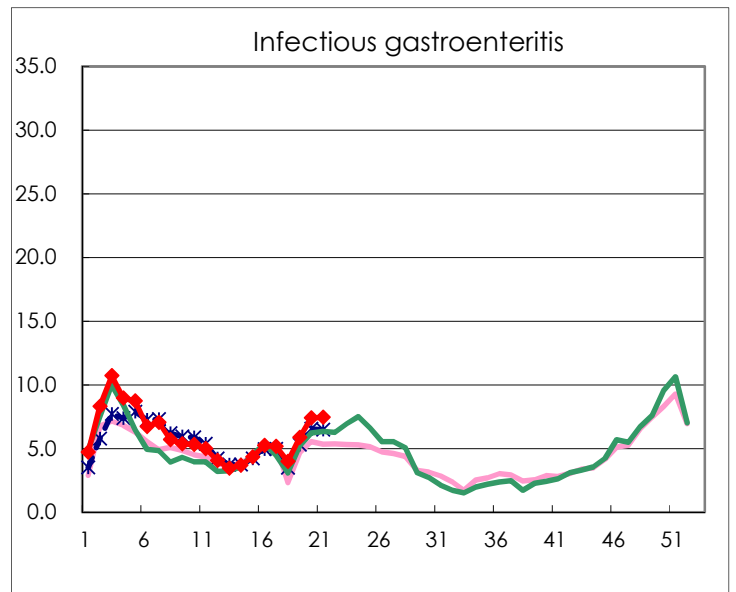
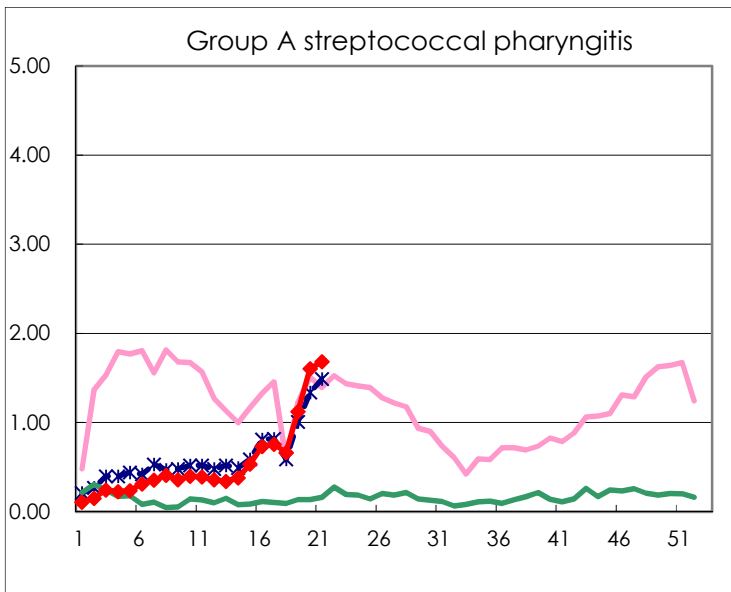
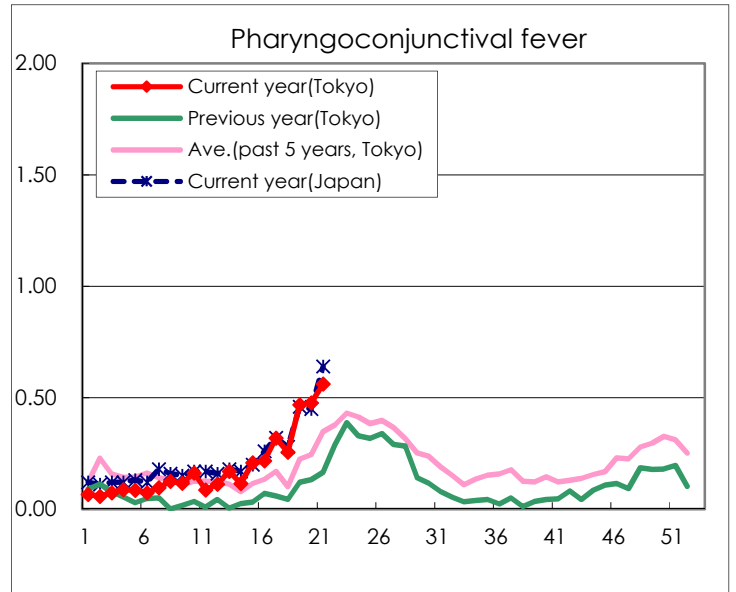
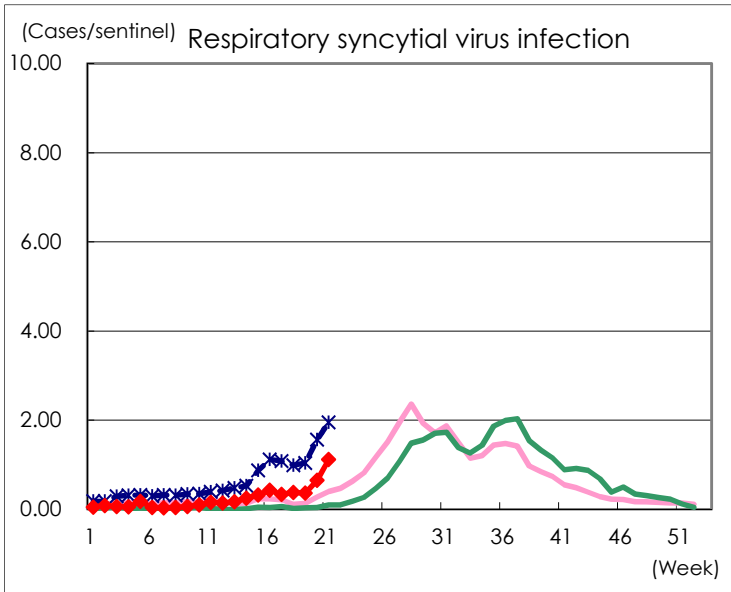
Category	Diseases	Tokyo					Japan	
		18th	19th	20th	21st	Cum 2023	21st	Cum 2023
V	Amebiasis	2	3	1	2	37	9	203
	Viral hepatitis(excluding hepatitis A and E)		3		2	25	1	106
	CRE infection		3	1	3	80	23	695
	Acute Flaccid Paralysis (excluding Acute poliomyelitis)				1	4		21
	Acute encephalitis(excluding JE and WNE)	1			1	15	7	196
	Cryptosporidiosis							2
	Creutzfeldt-Jakob disease				1	6	2	62
	Severe invasive streptococcal infections(TSLS)		2	3	2	49	9	334
	Acquired immunodeficiency syndrome (AIDS)	3	3	7	5	116	15	376
	Giardiasis		1			6	1	23
	Invasive <i>Haemophilus influenzae</i> disease	2		1	1	13	12	165
	Invasive meningococcal disease							5
	Invasive pneumococcal disease	4	7	5	3	76	48	790
	Varicella (limited to hospitalized case)		2	1	2	28	7	143
	Congenital rubella syndrome							
	Syphilis	34	74	54	63	1,488	201	5,766
	Disseminated cryptococcosis		1			10	5	79
	Tetanus					1	1	20
	Vancomycin-resistant <i>S. aureus</i> infection							
	Vancomycin-resistant <i>Enterococcus</i> infection		1			7	2	60
	Pertussis		5	4	2	34	23	279
Rubella					2		4	
Measles		2	2		5	1	10	
MDRA infection		1			1		6	

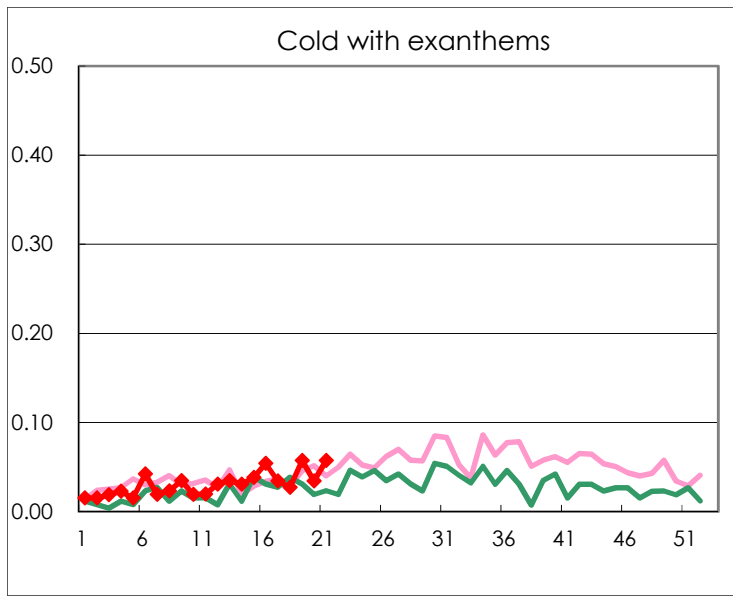
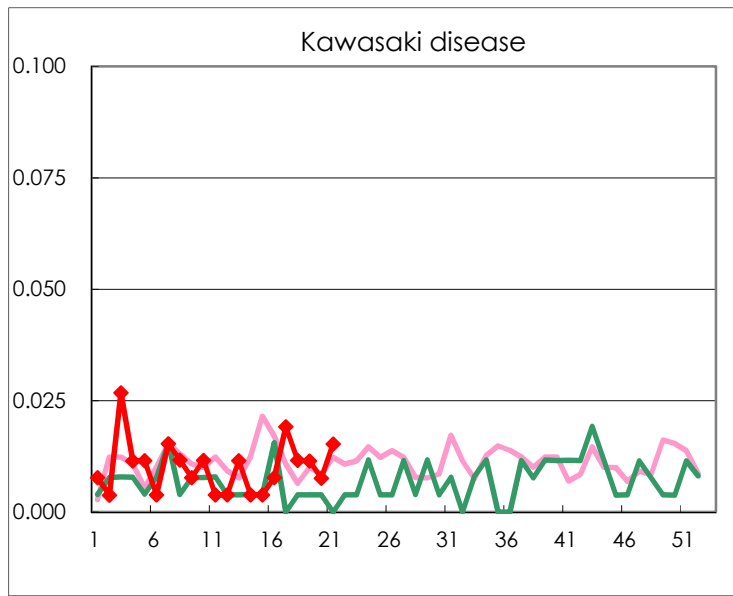
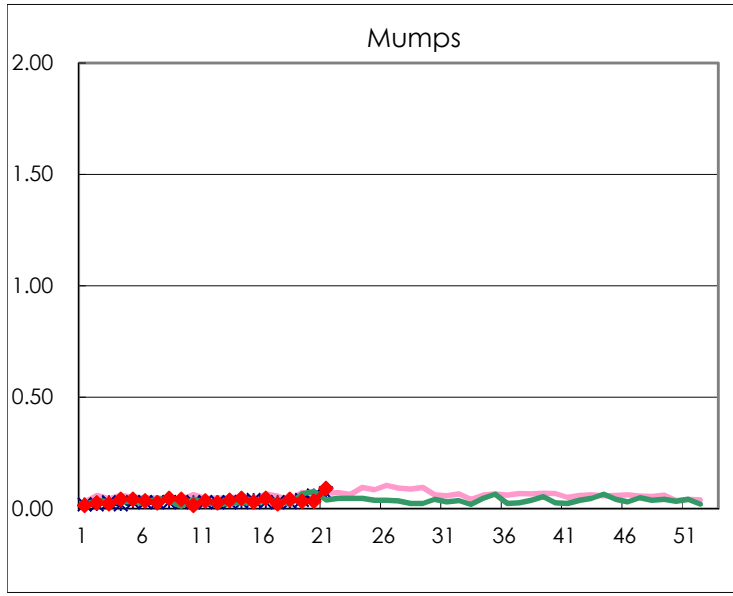
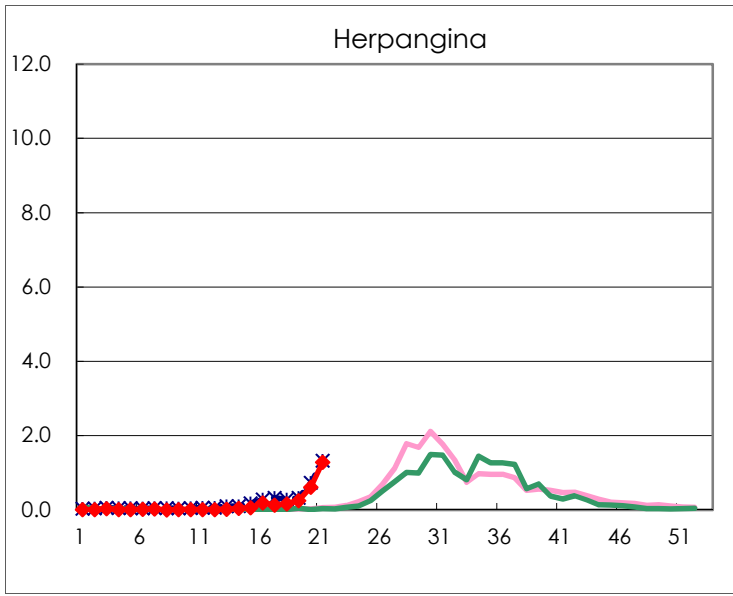
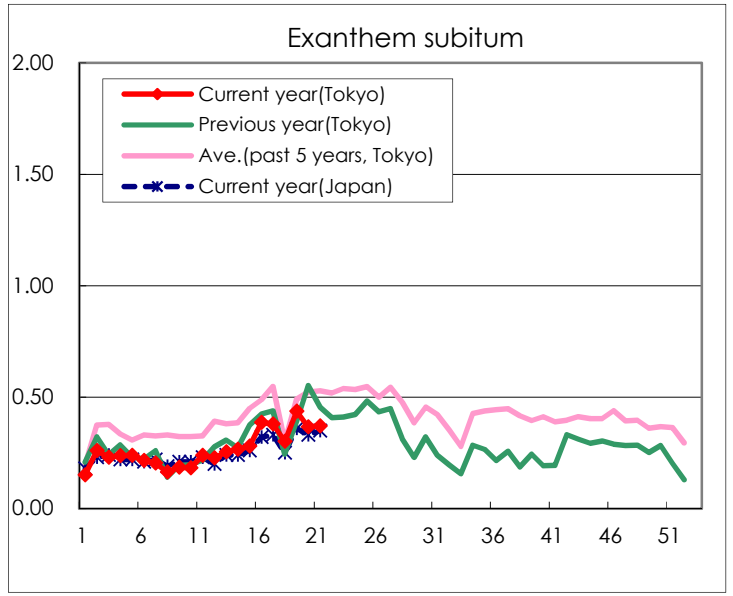
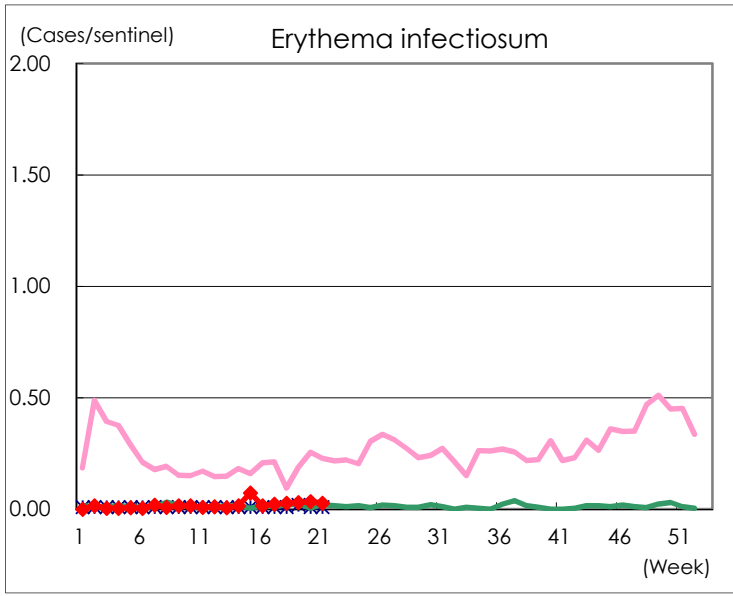
Number of patients with the diseases to be reported  
by the designated clinics and hospitals

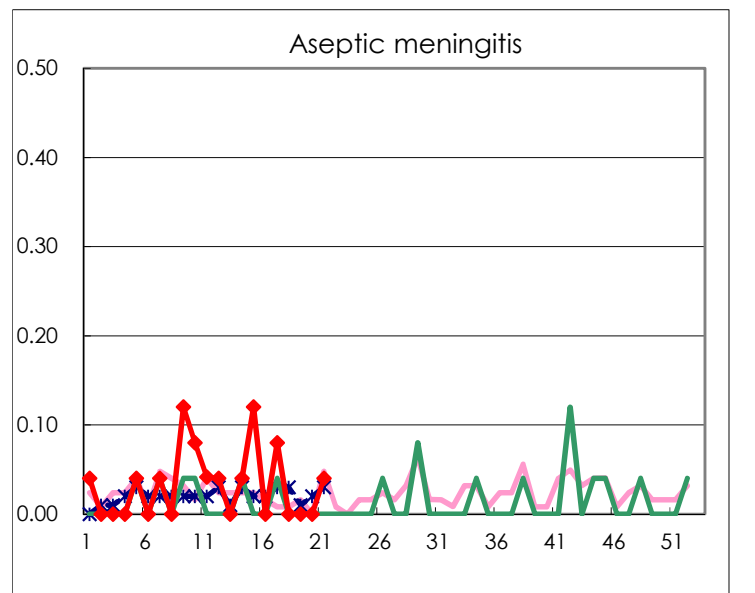
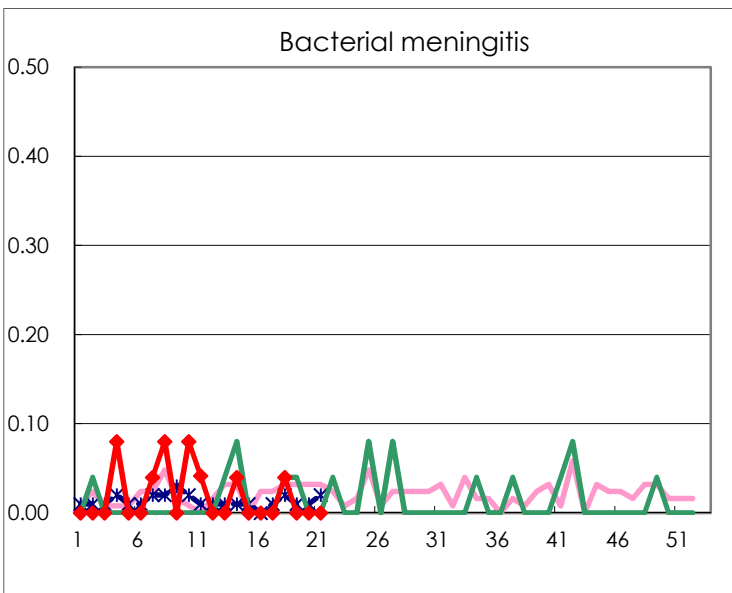
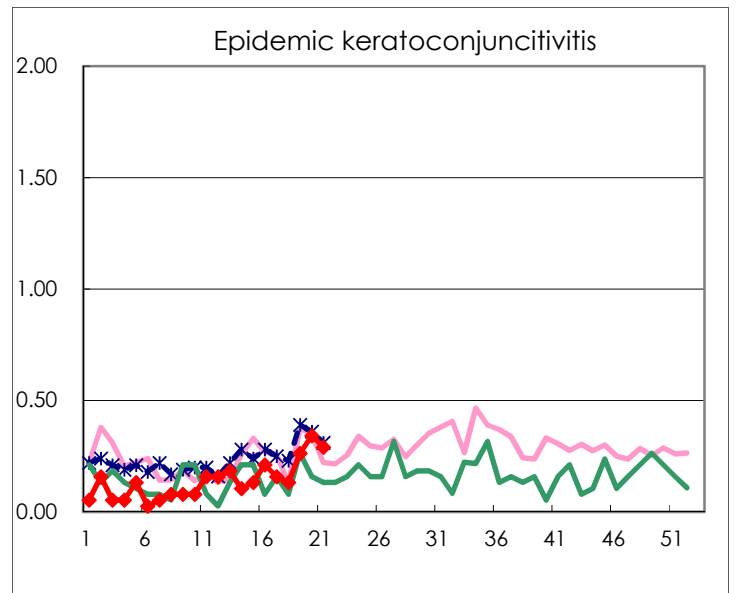
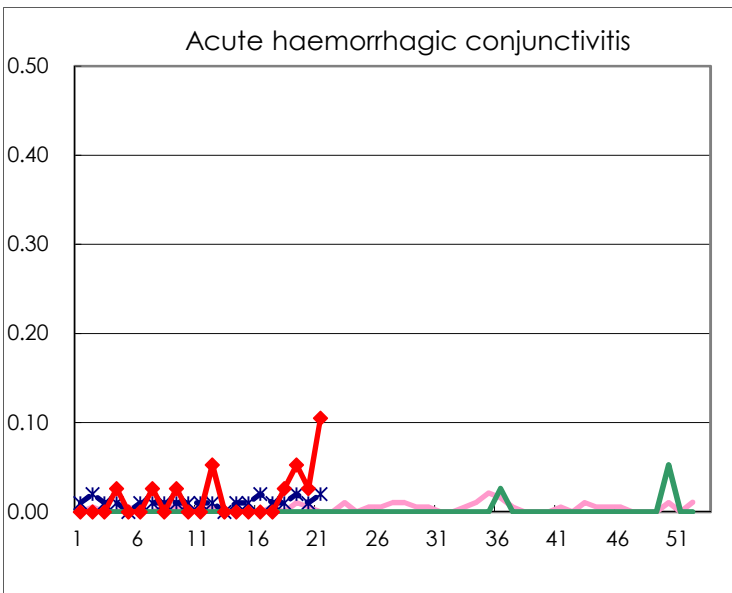
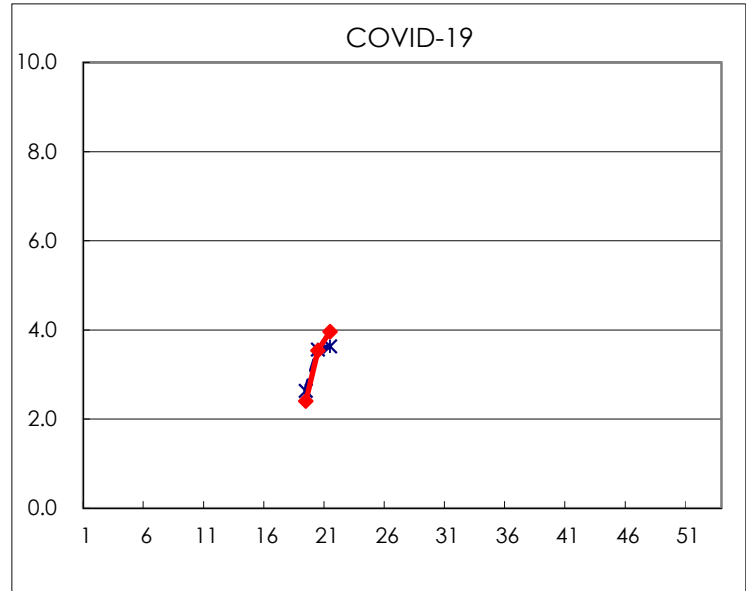
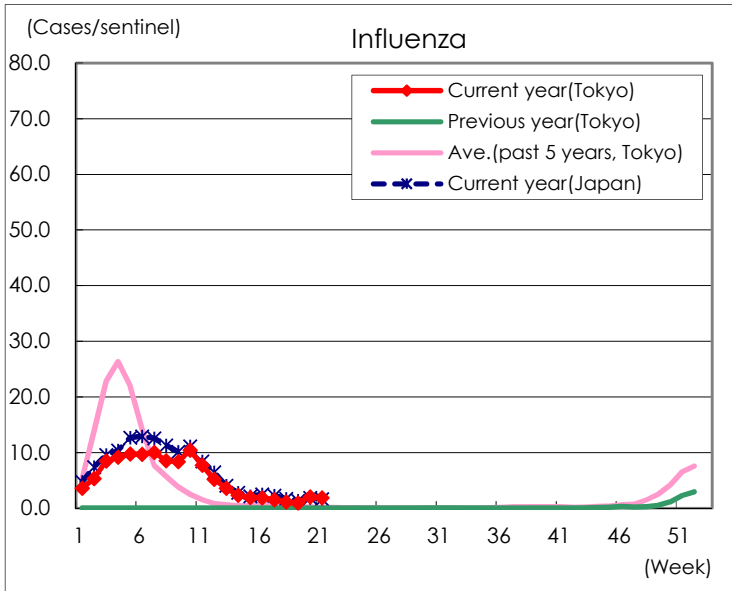
Diseases	Tokyo				
	18th	19th	20th	21st	/sentinel
Respiratory syncytial virus infection	98	95	171	293	1.12
Pharyngoconjunctival fever	66	122	125	147	0.56
Group A streptococcal pharyngitis	171	293	420	441	1.68
Infectious gastroenteritis	1,027	1,532	1,937	1,955	7.46
Chickenpox	24	49	33	46	0.18
Hand, foot, and mouth disease	33	44	80	95	0.36
Erythema infectiosum	7	8	9	7	0.03
Exanthem subitum	78	114	96	97	0.37
Herpangina	43	64	159	336	1.28
Mumps	11	9	9	24	0.09
Kawasaki disease	3	3	2	4	0.02
Cold with exanthems	7	15	9	15	0.06
Influenza	455	397	838	785	1.89
COVID-19		996	1,472	1,647	3.96
Acute hemorrhagic conjunctivitis	1	2	1	4	0.11
Epidemic keratoconjunctivitis	5	10	13	11	0.29
Bacterial meningitis	1				
Aseptic meningitis				1	0.04
Mycoplasma pneumonia		1	1	1	0.04
Chlamydial pneumonia (excluding psittacosis)					
Infectious gastroenteritis (only by Rotavirus)					
Influenza-Associated Hospitalizations	5	2	4	6	0.24

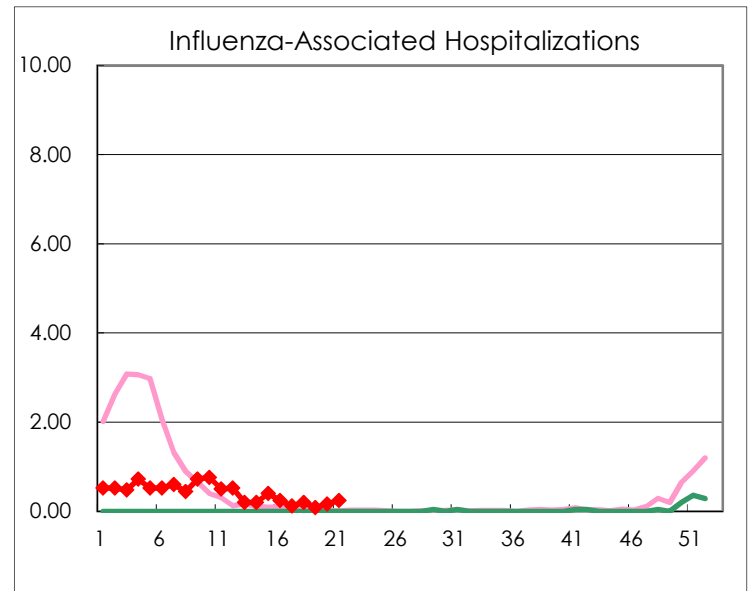
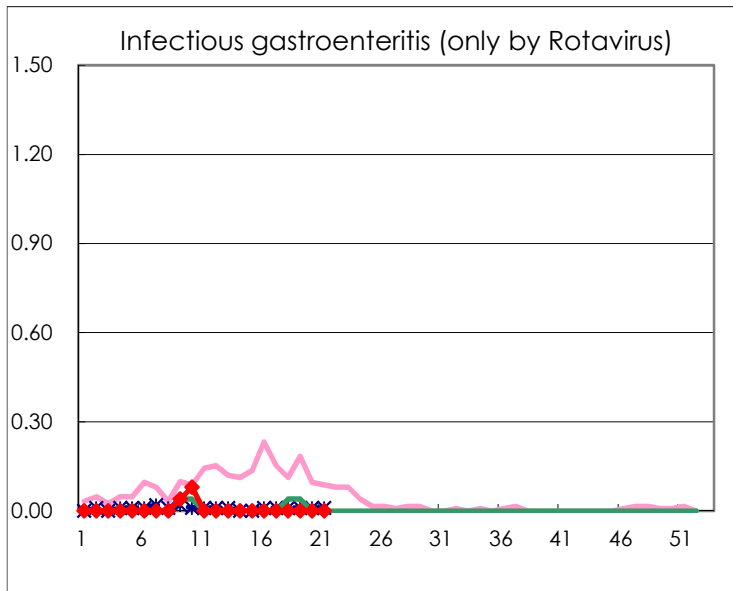
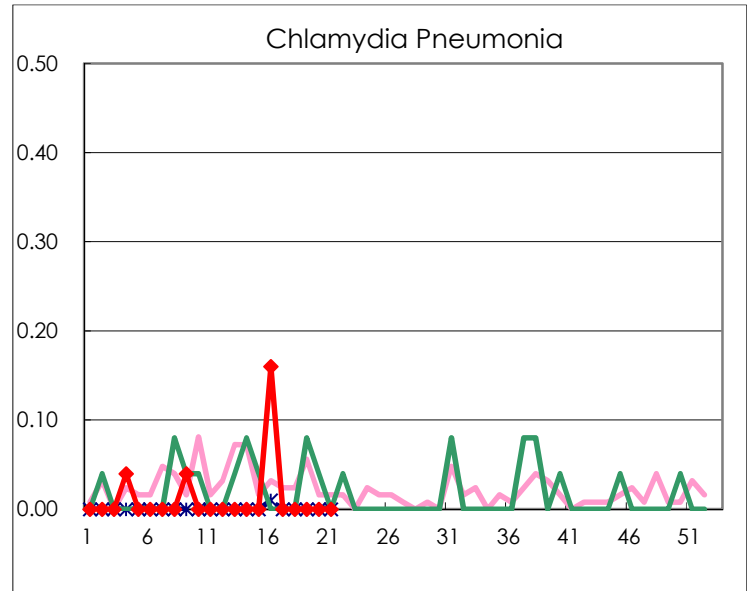
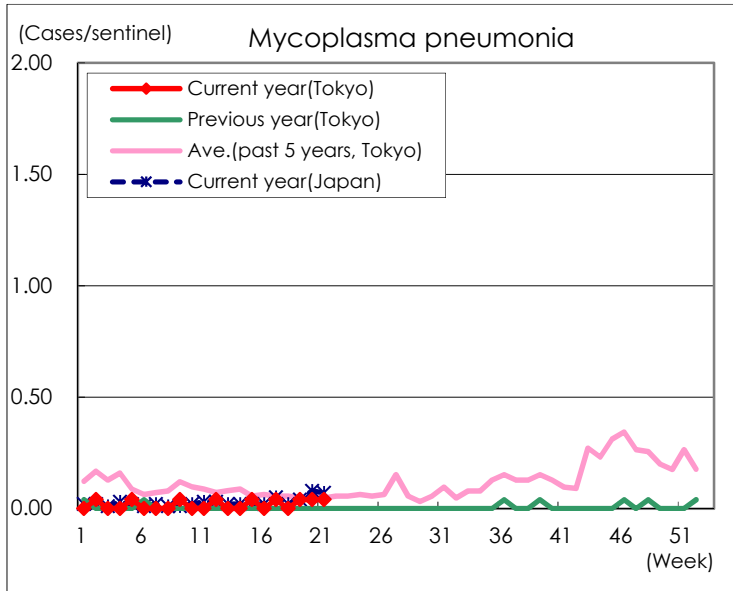
( Blank means 0. )

# Disease Trend Graph (weekly reported cases per sentinel in comparison)









Number of sentinel facilities for weekly reporting		
Types of sentinels	Number of sentinels	Sentinels having reported
Pediatric	264	262
Influenza	419	416
Ophthalmic	39	38
Specially-designated	25	25