
INFECTIOUS DISEASES WEEKLY REPORT

TOKYO IDWR

Tokyo Metropolitan Infectious Disease Surveillance Center

15 June 2023 / Number 23
(6/5 ~ 6/11)

Surveillance System in Tokyo, Japan

The infectious diseases which all physicians must report
All physicians must report to health centers the incidence of the diseases which are shown at page one. Health centers electronically report the individual cases to Tokyo Metropolitan Infectious Disease Surveillance Center.

The infectious diseases required to be reported by the sentinels
The numbers of patients who visit the sentinel clinics or hospitals during a week are reported to health centers in Tokyo. And they electronically report the numbers to Tokyo Metropolitan Infectious Disease Surveillance Center. We have about 500 sentinel clinics and hospitals in Tokyo.

Tokyo Metropolitan Institute of Public Health

TEL:81-3-3363-3213 FAX:81-3-5332-7365

e-mail:tmiph@section.metro.tokyo.jp

URL:idsc.tmiph.metro.tokyo.lg.jp/

Number of patients with the diseases which all physicians must report

Category	Diseases	Tokyo					Japan	
		20th	21st	22nd	23rd	Cum 2023	23rd	Cum 2023
I	Ebola hemorrhagic fever							
	Crimean-Congo hemorrhagic fever							
	Smallpox							
	South American hemorrhagic fever							
	Plague							
	Marburg disease							
	Lassa fever							
II	Acute poliomyelitis							
	Tuberculosis	38	47	41	37	824	225	5,840
	Diphtheria							
	Severe Acute Respiratory Syndrome(SARS)							
	Middle East Respiratory Syndrome (MERS)							
	Avian influenza H5N1							
	Avian influenza H7N9							
III	Cholera					1		1
	Shigellosis			1		3		12
	Enterohemorrhagic Escherichia coli infection	2	9	13	14	88	79	738
	Typhoid fever					2	1	18
	Paratyphoid fever					1		5
IV	Hepatitis E	4		5	1	95	13	268
	West Nile fever							
	Hepatitis A			1		5		26
	Echinococcosis							5
	Mpox	10	5	2	3	131	6	173
	Yellow fever							
	Psittacosis							5
	Omsk hemorrhagic fever							
	Relapsing fever							4
	Kyasanur forest disease							
	Q fever							
	Rabies							
	Coccidioidomycosis							1
	Zika virus infection							
	Severe Fever with Thrombocytopenia Syndrome						1	66
	Hemorrhagic fever with renal syndrome							
	Western equine encephalitis							
	Tick-borne encephalitis							
	Anthrax							
	Chikungunya fever							1
	Scrub typhus(Tsutsugamushi disease)					4	5	94
	Dengue fever		2		3	11	2	31
	Eastern equine encephalitis							
	Avian influenza (excluding H5N1 and H7N9)							
	Nipah virus infection							
	Japanese spotted fever				1	1	10	106
	Japanese encephalitis							
	Hantavirus pulmonary syndrome							
	Herpes B virus infection							
	Glanders							
	Brucellosis							
	Venezuelan equine encephalitis							
	Hendra virus infection							
Epidemic typhus								
Botulism								
Malaria				1	4	1	7	
Tularemia								
Lyme disease							2	
Lyssavirus infection(excluding rabies)								
Rift valley fever								
Melioidosis								
Legionellosis	5	5	3		60	47	679	
Leptospirosis							4	
Rocky mountain spotted fever								

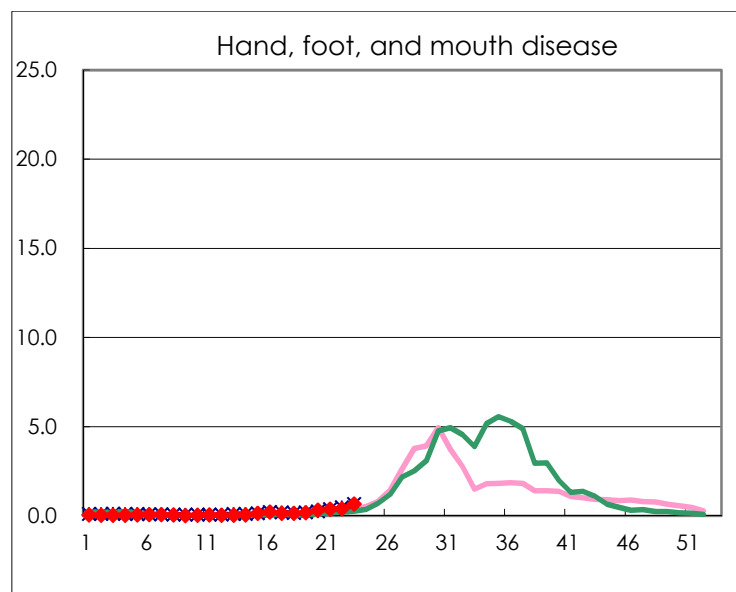
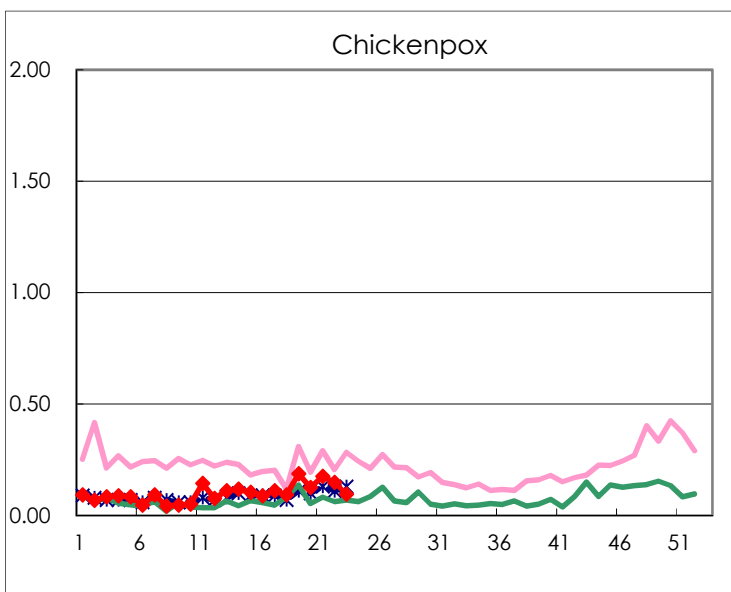
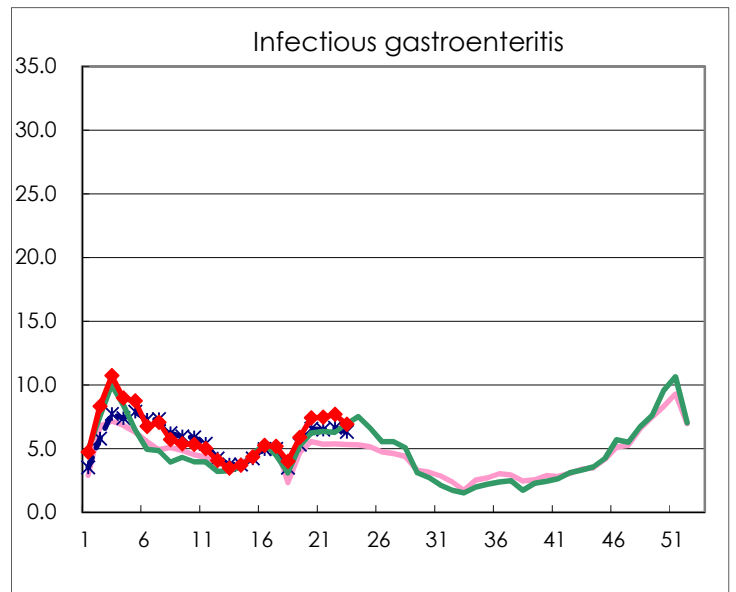
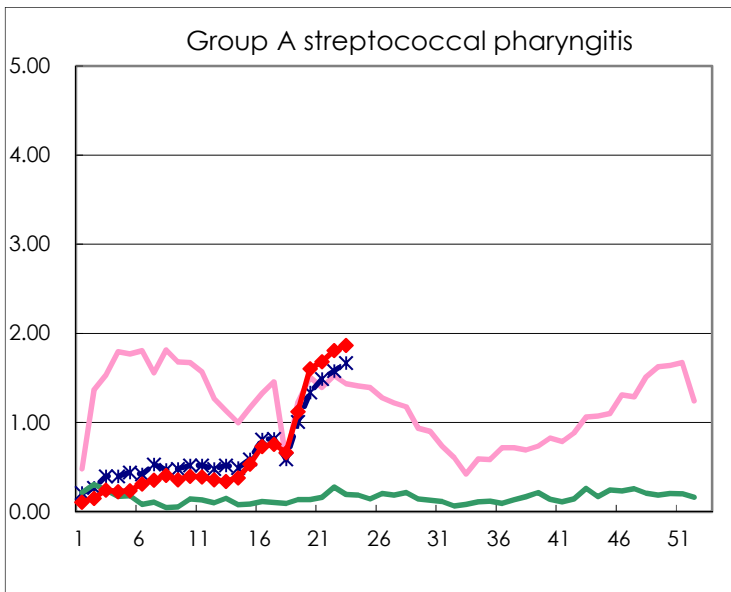
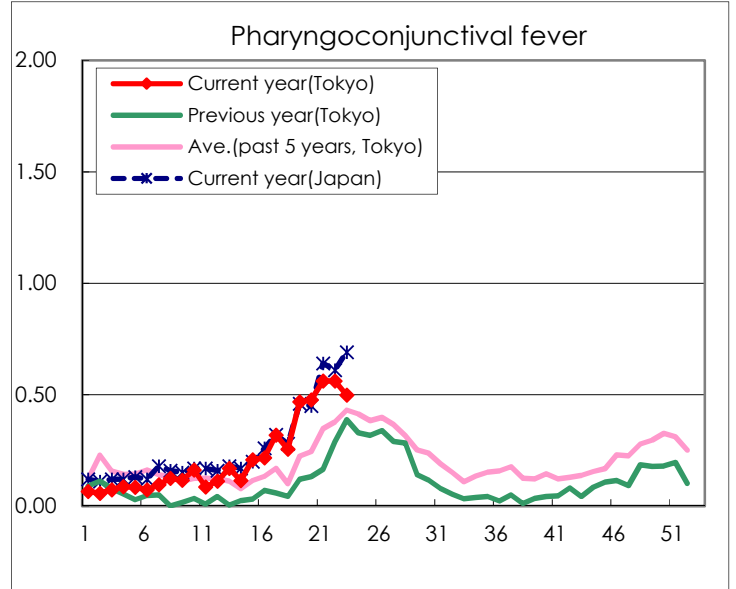
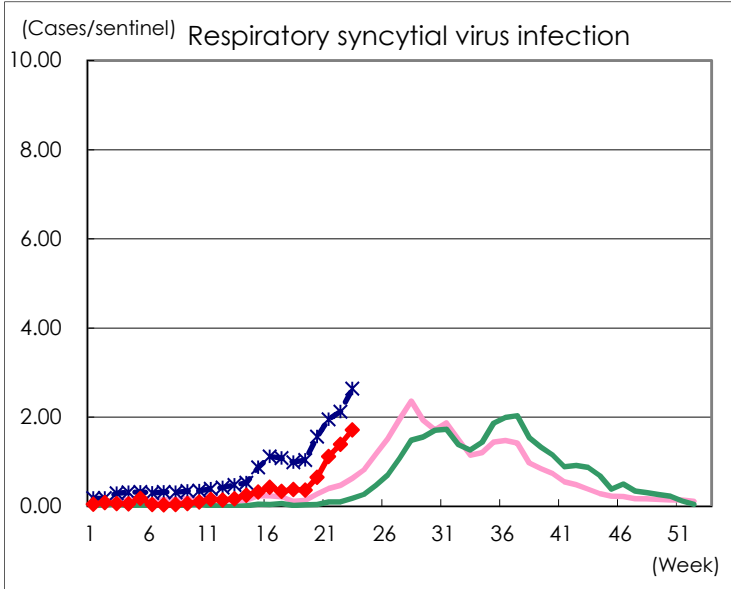
Category	Diseases	Tokyo					Japan	
		20th	21st	22nd	23rd	Cum 2023	23rd	Cum 2023
V	Amebiasis	1	2	1	2	40	5	217
	Viral hepatitis(excluding hepatitis A and E)		2			25	3	113
	CRE infection	1	4	4		85	15	765
	Acute Flaccid Paralysis (excluding Acute poliomyelitis)		1			4		23
	Acute encephalitis(excluding JE and WNE)		1			15	8	218
	Cryptosporidiosis							2
	Creutzfeldt-Jakob disease		1		2	8	1	67
	Severe invasive streptococcal infections(TSLS)	3	2	5	1	55	11	363
	Acquired immunodeficiency syndrome (AIDS)	9	5	8	10	136	12	418
	Giardiasis					6		24
	Invasive <i>Haemophilus influenzae</i> disease	1	1		1	14	8	192
	Invasive meningococcal disease				1	1	3	8
	Invasive pneumococcal disease	5	4	1	4	83	22	859
	Varicella (limited to hospitalized case)	2	2	3	5	37	10	171
	Congenital rubella syndrome							
	Syphilis	54	65	88	89	1,667	200	6,426
	Disseminated cryptococcosis					10	2	84
	Tetanus					1	4	25
	Vancomycin-resistant <i>S. aureus</i> infection							
	Vancomycin-resistant <i>Enterococcus</i> infection					7	1	64
	Pertussis	4	2	2	3	39	17	336
Rubella			1		3		6	
Measles	2				5		16	
MDRA infection					1		7	

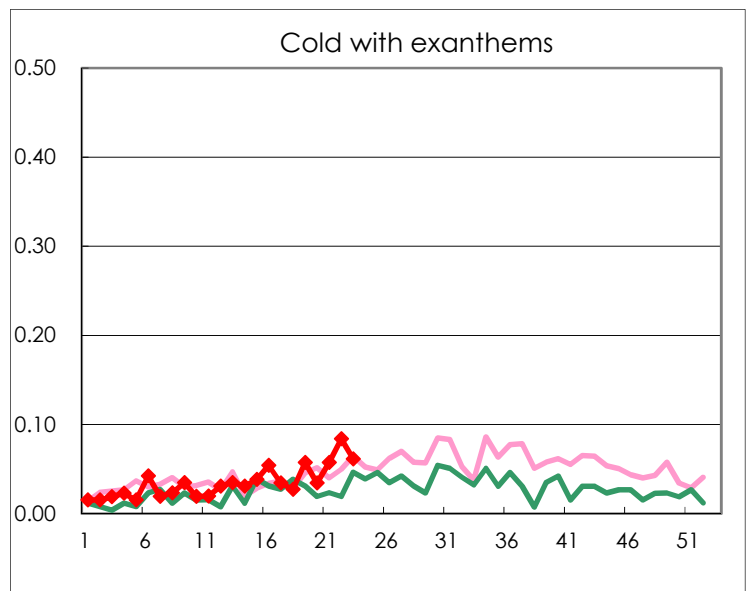
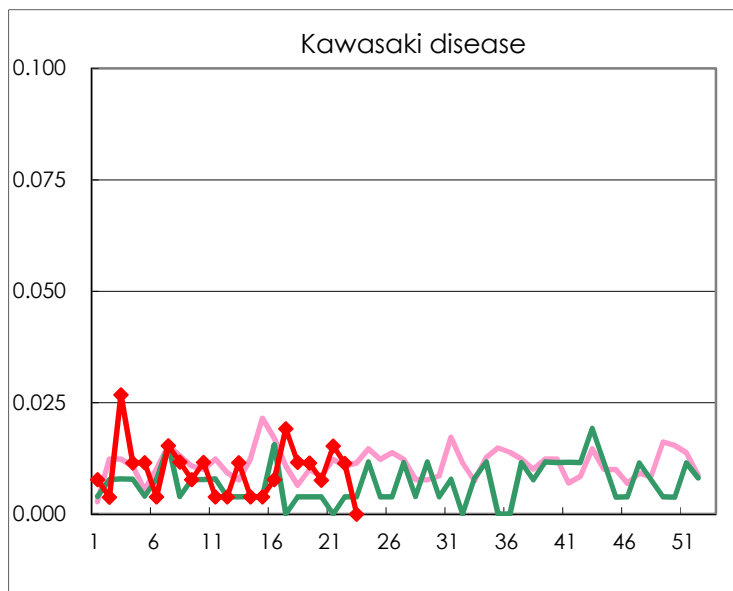
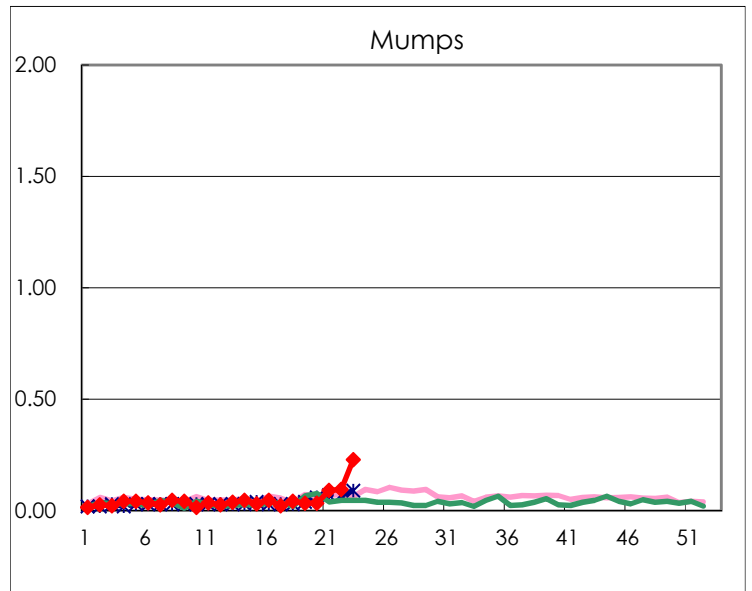
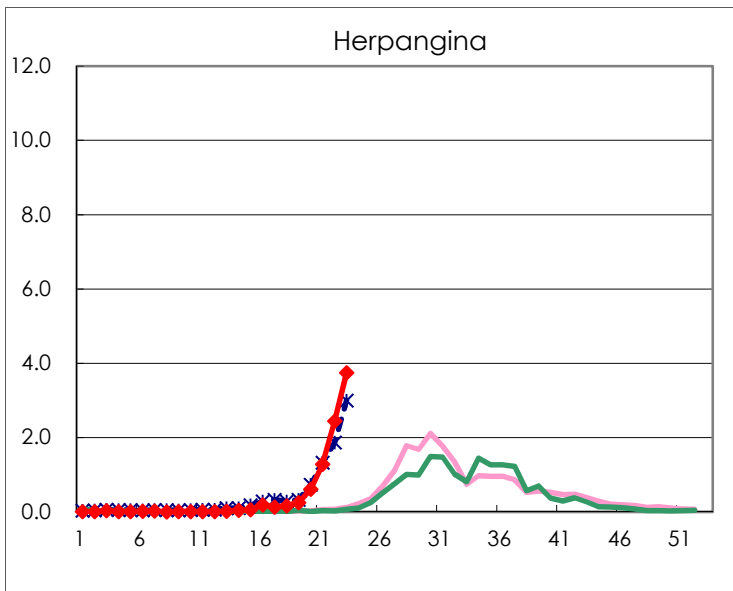
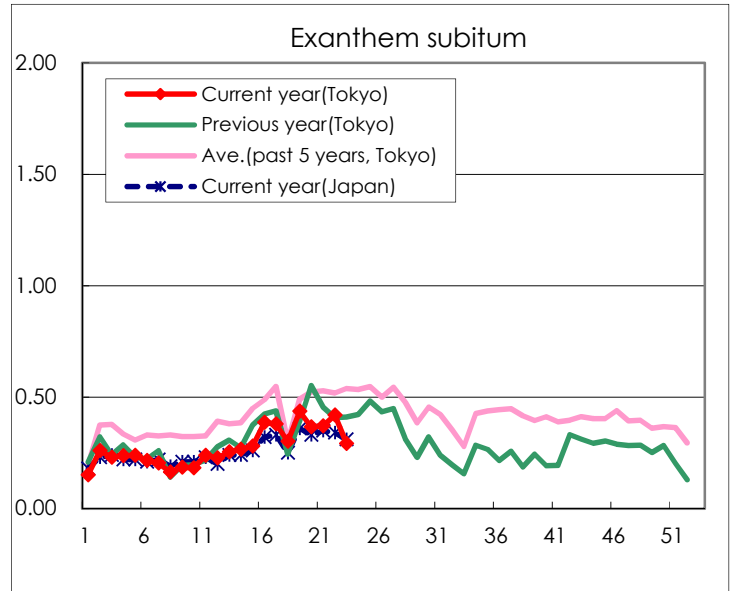
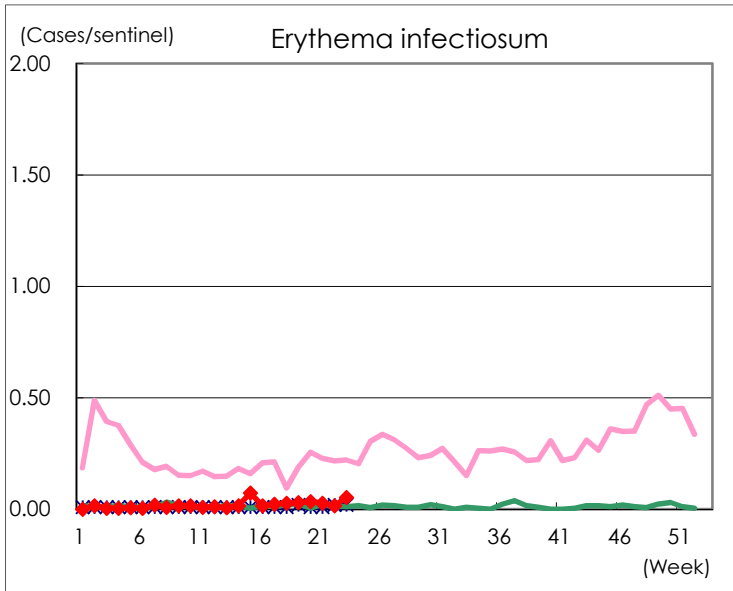
Number of patients with the diseases to be reported
by the designated clinics and hospitals

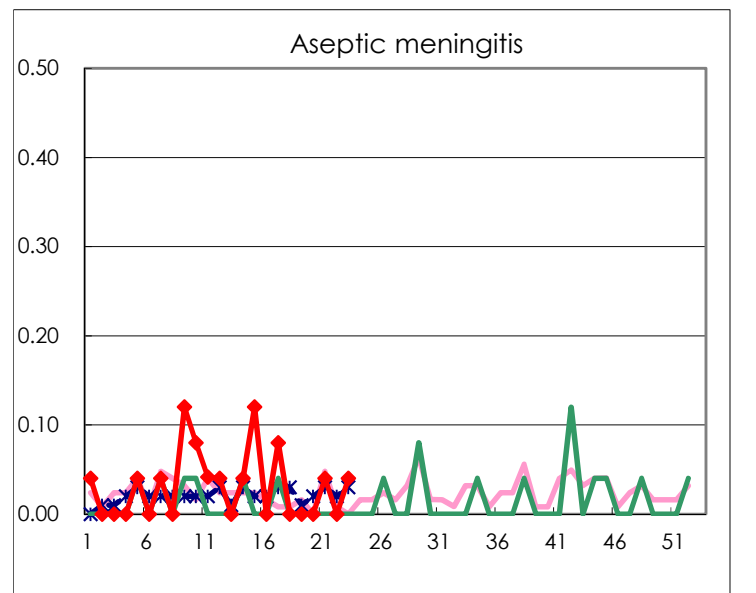
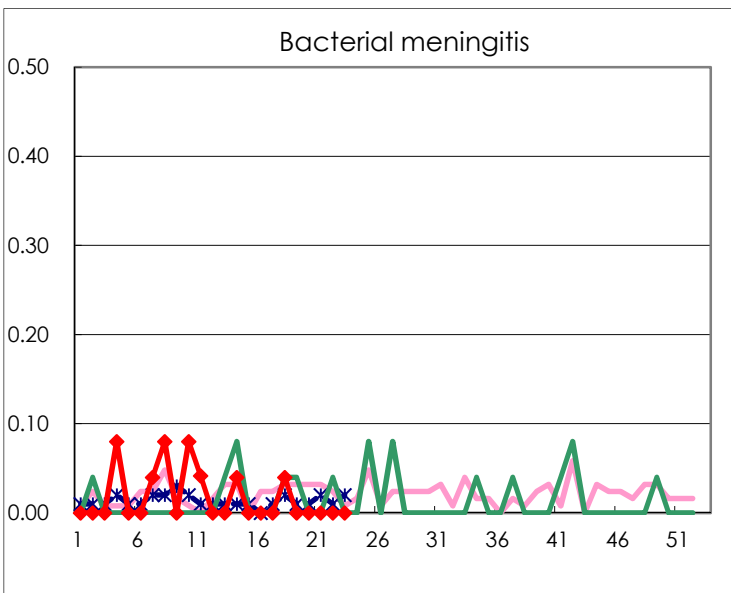
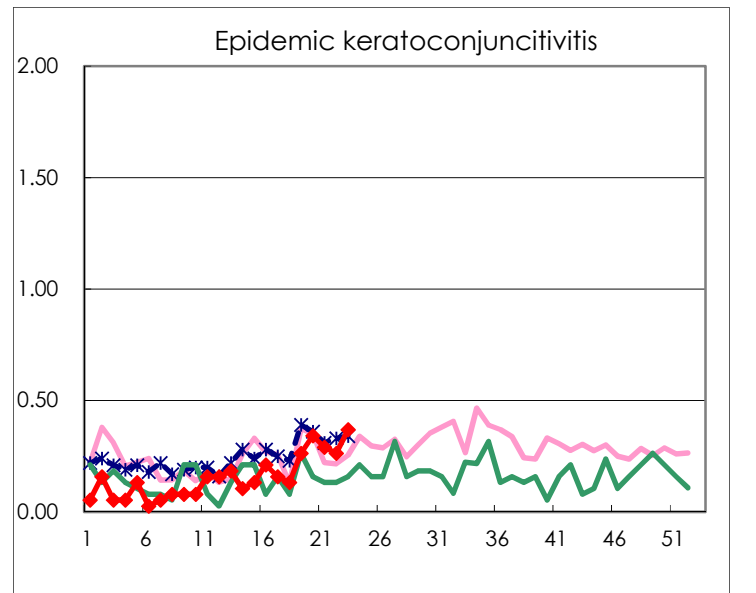
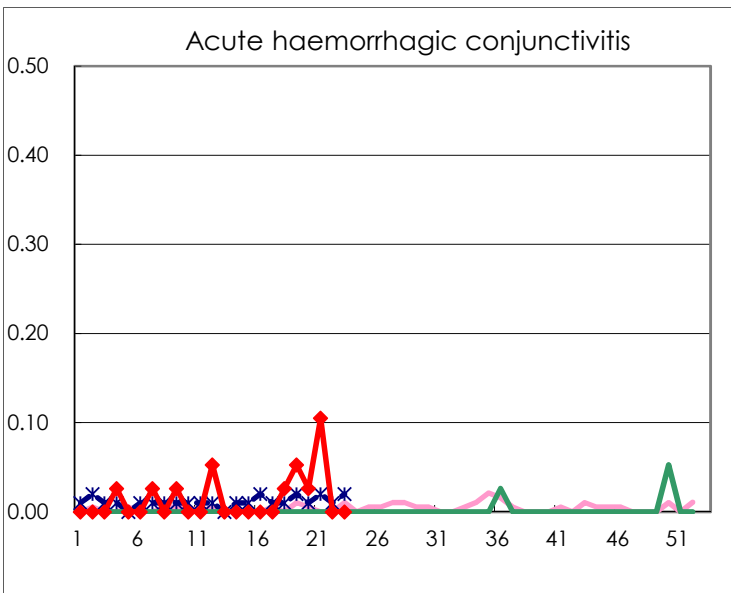
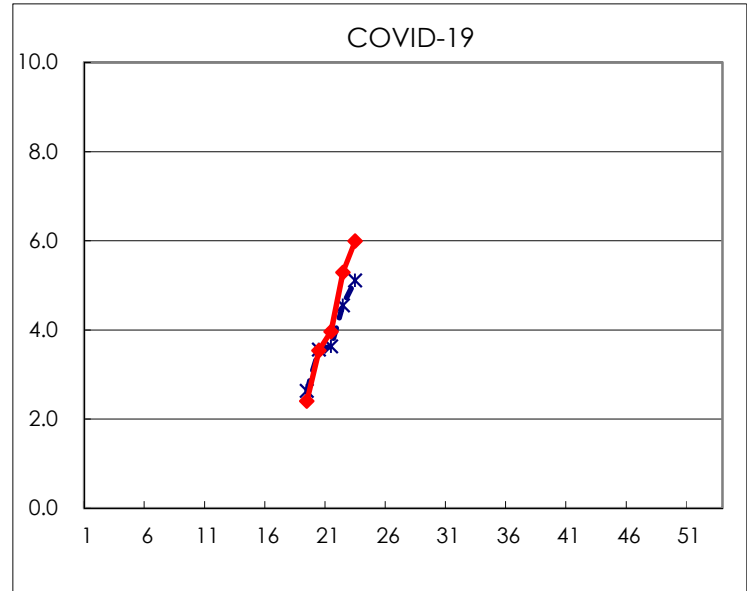
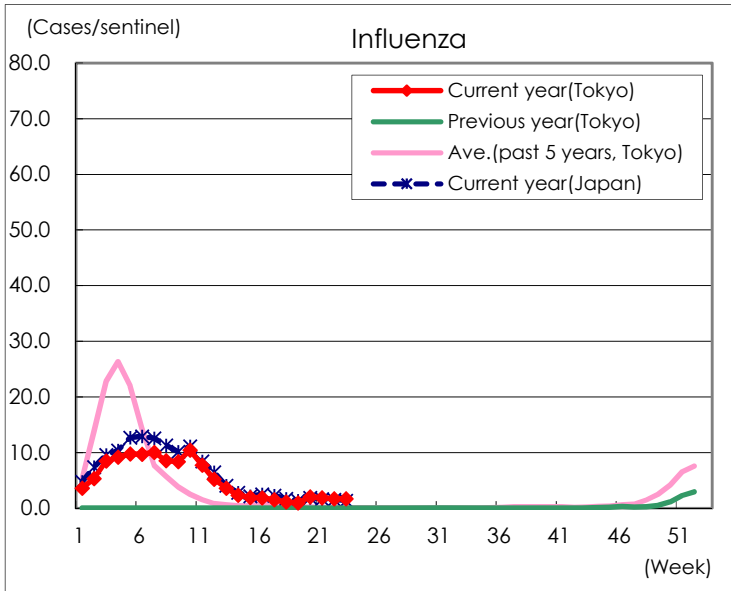
Diseases	Tokyo				
	20th	21st	22nd	23rd	/sentinel
Respiratory syncytial virus infection	171	293	364	448	1.72
Pharyngoconjunctival fever	125	147	147	130	0.50
Group A streptococcal pharyngitis	420	441	474	487	1.87
Infectious gastroenteritis	1,937	1,955	2,013	1,799	6.89
Chickenpox	33	46	39	25	0.10
Hand, foot, and mouth disease	80	95	102	170	0.65
Erythema infectiosum	9	7	4	14	0.05
Exanthem subitum	96	97	110	76	0.29
Herpangina	159	336	640	979	3.75
Mumps	9	24	25	60	0.23
Kawasaki disease	2	4	3		
Cold with exanthems	9	15	22	16	0.06
Influenza	838	785	706	701	1.69
COVID-19	1,472	1,649	2,207	2,486	5.99
Acute hemorrhagic conjunctivitis	1	4			
Epidemic keratoconjunctivitis	13	11	10	14	0.37
Bacterial meningitis					
Aseptic meningitis		1		1	0.04
Mycoplasma pneumonia	1	1	3	1	0.04
Chlamydial pneumonia (excluding psittacosis)					
Infectious gastroenteritis (only by Rotavirus)					
Influenza-Associated Hospitalizations	4	2	3	3	0.12

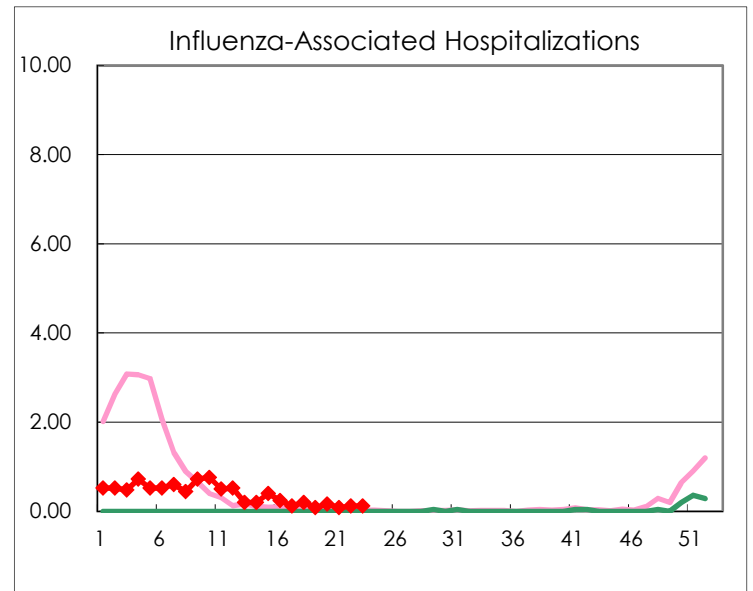
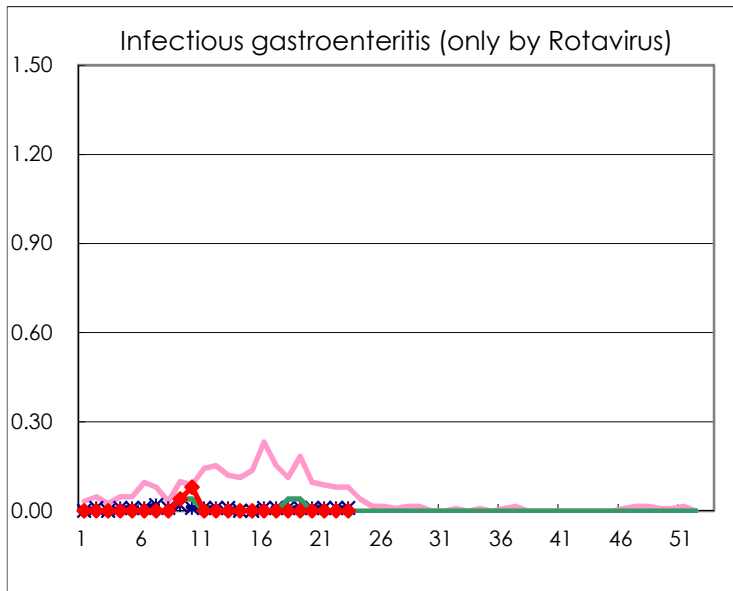
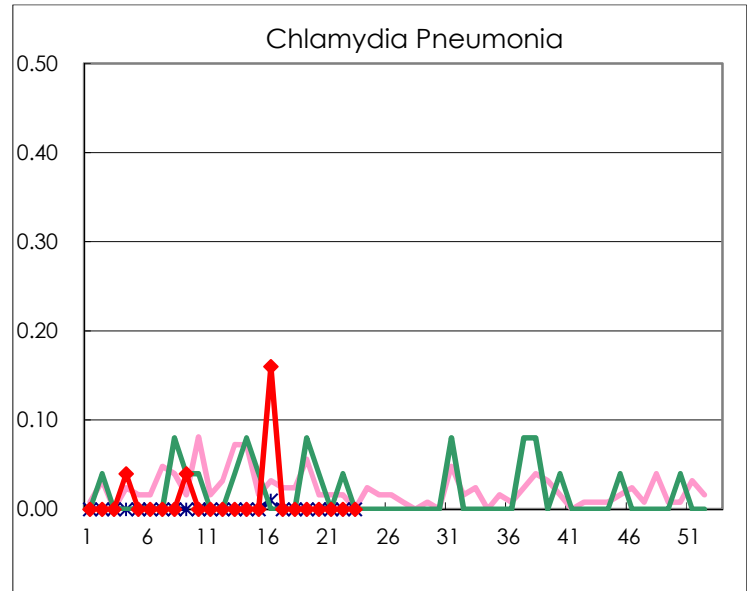
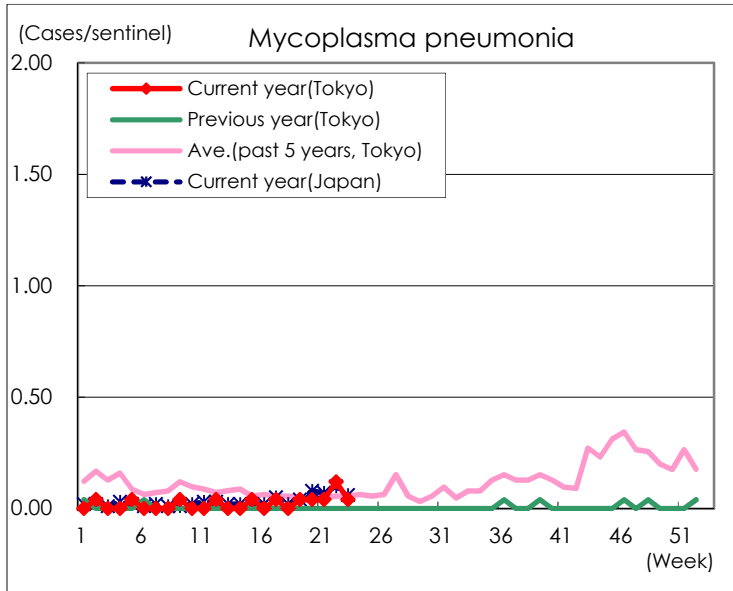
(Blank means 0.)

Disease Trend Graph (weekly reported cases per sentinel in comparison)









Number of sentinel facilities for weekly reporting		
Types of sentinels	Number of sentinels	Sentinels having reported
Pediatric	264	261
Influenza	419	415
Ophthalmic	39	38
Specially-designated	25	25