
INFECTIOUS DISEASES WEEKLY REPORT

TOKYO IDWR

Tokyo Metropolitan Infectious Disease Surveillance Center

22 June 2023 / Number 24
(6/12 ~ 6/18)

Surveillance System in Tokyo, Japan

The infectious diseases which all physicians must report
All physicians must report to health centers the incidence of the diseases which are shown at page one. Health centers electronically report the individual cases to Tokyo Metropolitan Infectious Disease Surveillance Center.

The infectious diseases required to be reported by the sentinels
The numbers of patients who visit the sentinel clinics or hospitals during a week are reported to health centers in Tokyo. And they electronically report the numbers to Tokyo Metropolitan Infectious Disease Surveillance Center. We have about 500 sentinel clinics and hospitals in Tokyo.

Tokyo Metropolitan Institute of Public Health

TEL:81-3-3363-3213 FAX:81-3-5332-7365

e-mail:tmiph@section.metro.tokyo.jp

URL:idsc.tmiph.metro.tokyo.lg.jp/

Number of patients with the diseases which all physicians must report

Category	Diseases	Tokyo					Japan	
		21st	22nd	23rd	24th	Cum 2023	24th	Cum 2023
I	Ebola hemorrhagic fever							
	Crimean-Congo hemorrhagic fever							
	Smallpox							
	South American hemorrhagic fever							
	Plague							
	Marburg disease							
	Lassa fever							
II	Acute poliomyelitis							
	Tuberculosis	47	43	39	40	868	251	6,152
	Diphtheria							
	Severe Acute Respiratory Syndrome(SARS)							
	Middle East Respiratory Syndrome (MERS)							
	Avian influenza H5N1							
	Avian influenza H7N9							
III	Cholera					1		1
	Shigellosis		1		1	4	2	14
	Enterohemorrhagic Escherichia coli infection	9	13	16	20	110	97	846
	Typhoid fever					2	1	19
	Paratyphoid fever					1	1	6
IV	Hepatitis E		5	1	5	100	7	280
	West Nile fever							
	Hepatitis A		1			5		26
	Echinococcosis							5
	Mpox	5	2	3	4	135	2	177
	Yellow fever							
	Psittacosis							5
	Omsk hemorrhagic fever							
	Relapsing fever							4
	Kyasanur forest disease							
	Q fever							
	Rabies							
	Coccidioidomycosis							1
	Zika virus infection							
	Severe Fever with Thrombocytopenia Syndrome						7	73
	Hemorrhagic fever with renal syndrome							
	Western equine encephalitis							
	Tick-borne encephalitis							
	Anthrax							
	Chikungunya fever							1
	Scrub typhus(Tsutsugamushi disease)					4	3	97
	Dengue fever	2		3	1	12	2	33
	Eastern equine encephalitis							
	Avian influenza (excluding H5N1 and H7N9)							
	Nipah virus infection							
	Japanese spotted fever			1		1	13	120
	Japanese encephalitis							
	Hantavirus pulmonary syndrome							
	Herpes B virus infection							
	Glanders							
	Brucellosis							1
	Venezuelan equine encephalitis							
	Hendra virus infection							
	Epidemic typhus							
Botulism								
Malaria			1		4		7	
Tularemia								
Lyme disease			1		1		3	
Lyssavirus infection(excluding rabies)								
Rift valley fever								
Melioidosis								
Legionellosis	5	3		3	63	131	818	
Leptospirosis							4	
Rocky mountain spotted fever								

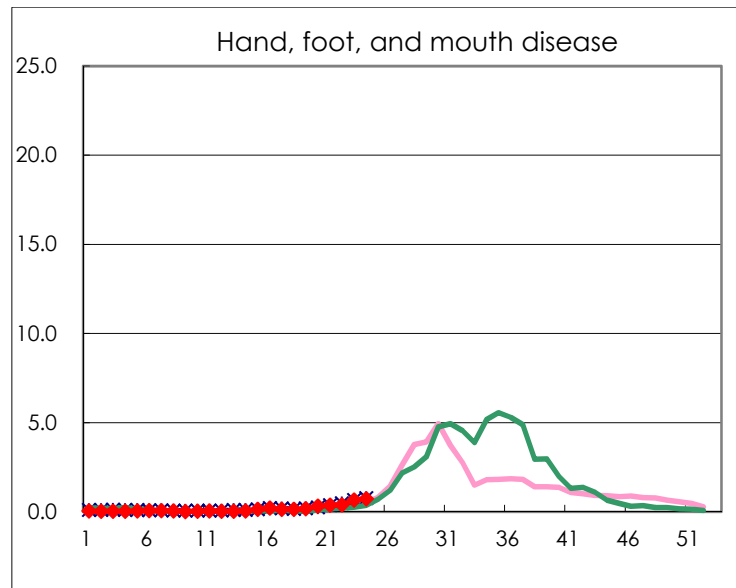
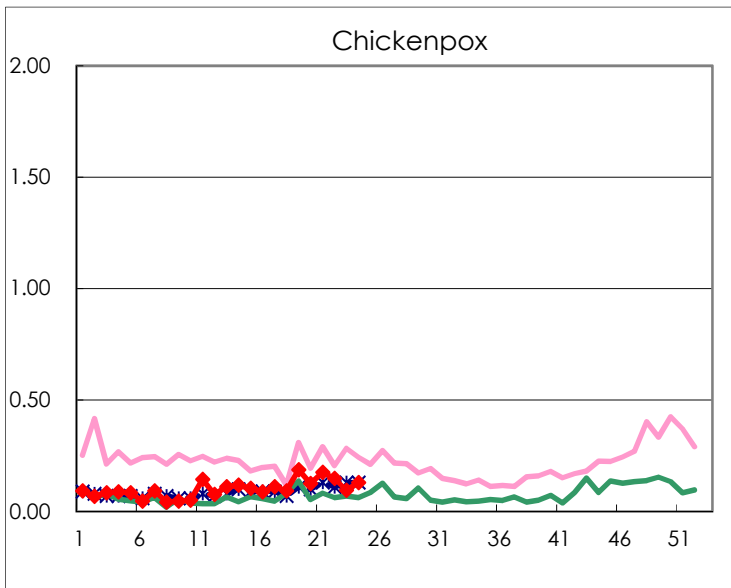
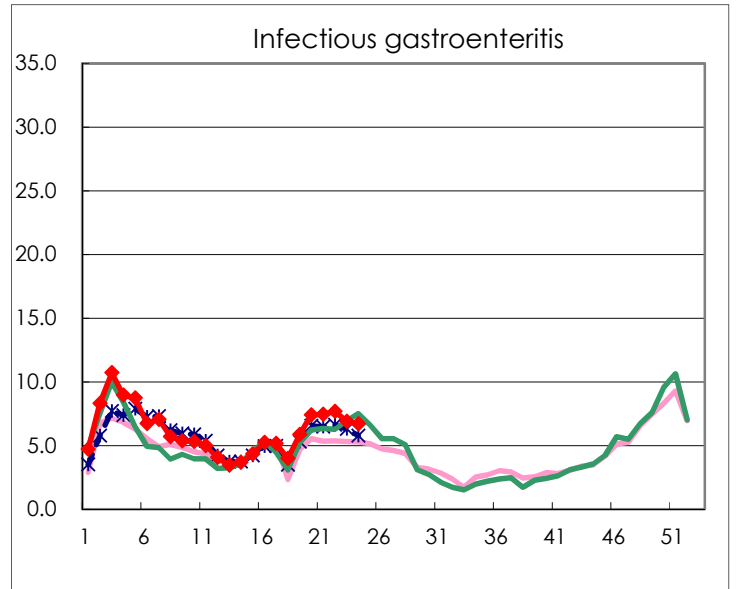
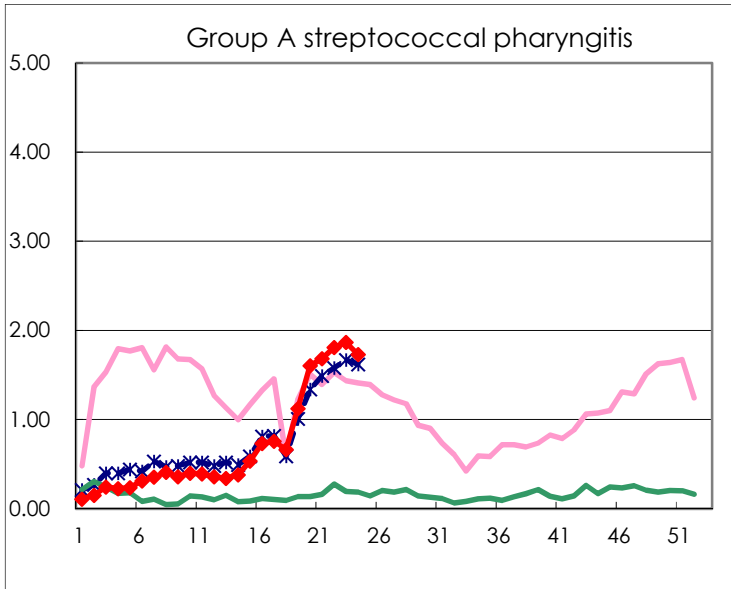
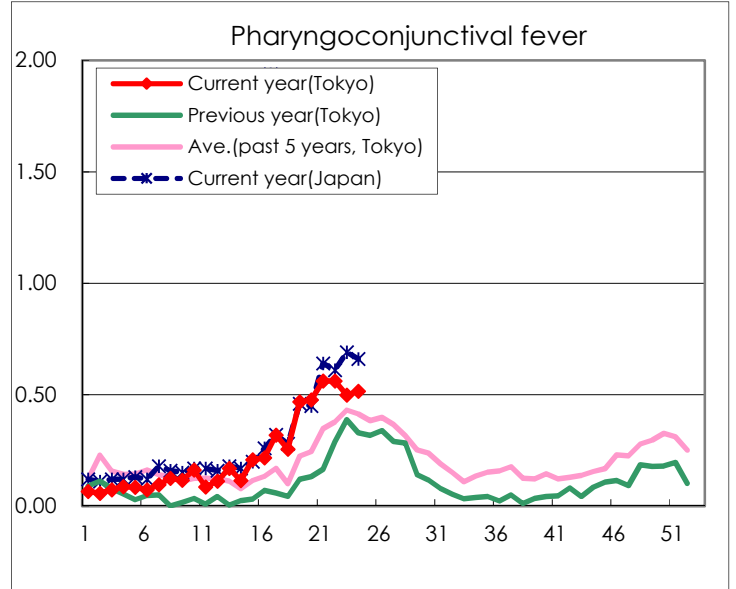
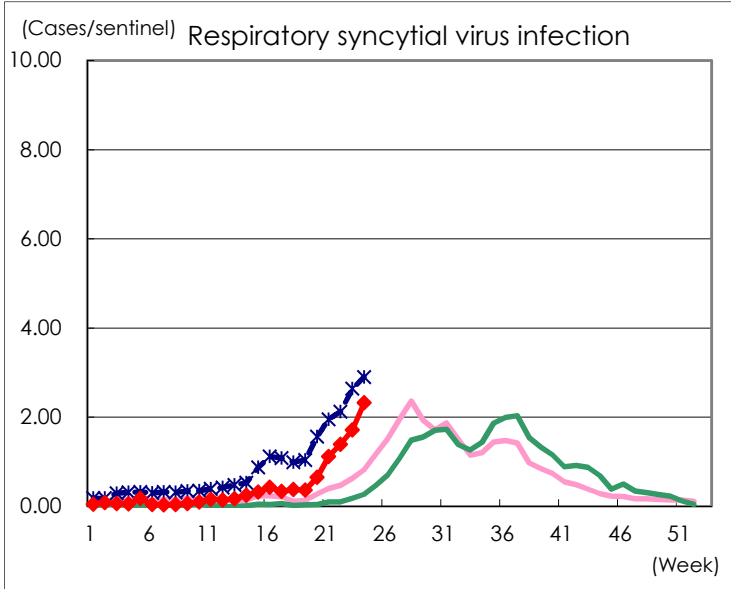
Category	Diseases	Tokyo					Japan	
		21st	22nd	23rd	24th	Cum 2023	24th	Cum 2023
V	Amebiasis	2	1	2	3	43	5	227
	Viral hepatitis(excluding hepatitis A and E)	2			2	27	3	121
	CRE infection	4	4		4	89	29	802
	Acute Flaccid Paralysis (excluding Acute poliomyelitis)	1			1	5	2	26
	Acute encephalitis(excluding JE and WNE)	1				15	4	223
	Cryptosporidiosis						1	3
	Creutzfeldt-Jakob disease	1		2	1	9	4	72
	Severe invasive streptococcal infections(TSLS)	2	5	1	2	57	19	387
	Acquired immunodeficiency syndrome (AIDS)	5	8	11	5	142	12	437
	Giardiasis					6		24
	Invasive <i>Haemophilus influenzae</i> disease	1		1	1	15	13	209
	Invasive meningococcal disease			1		1		8
	Invasive pneumococcal disease	4	1	5	1	85	20	889
	Varicella (limited to hospitalized case)	2	3	5		37	7	179
	Congenital rubella syndrome							
	Syphilis	65	88	89	64	1,731	229	6,762
	Disseminated cryptococcosis					10	2	86
	Tetanus					1	8	33
	Vancomycin-resistant <i>S. aureus</i> infection							
	Vancomycin-resistant <i>Enterococcus</i> infection					7	1	65
	Pertussis	2	2	3	12	51	24	368
Rubella		1			3		5	
Measles				1	6	2	18	
MDRA infection					1		7	

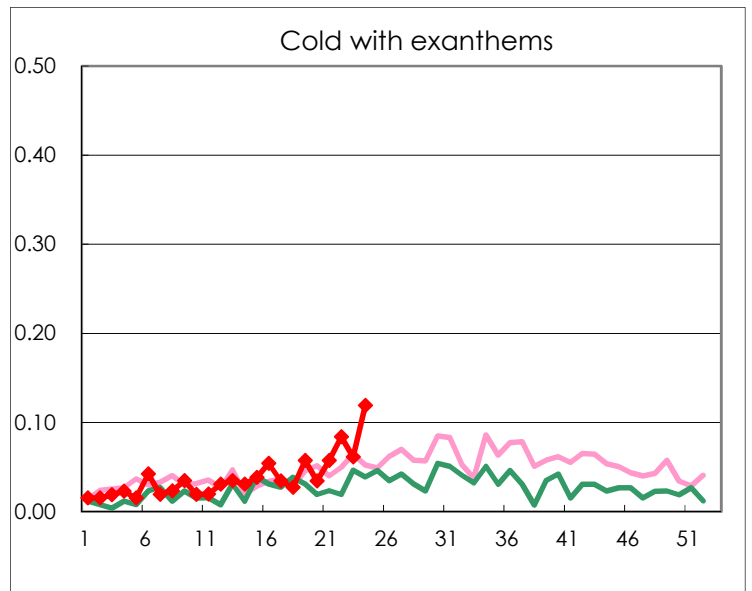
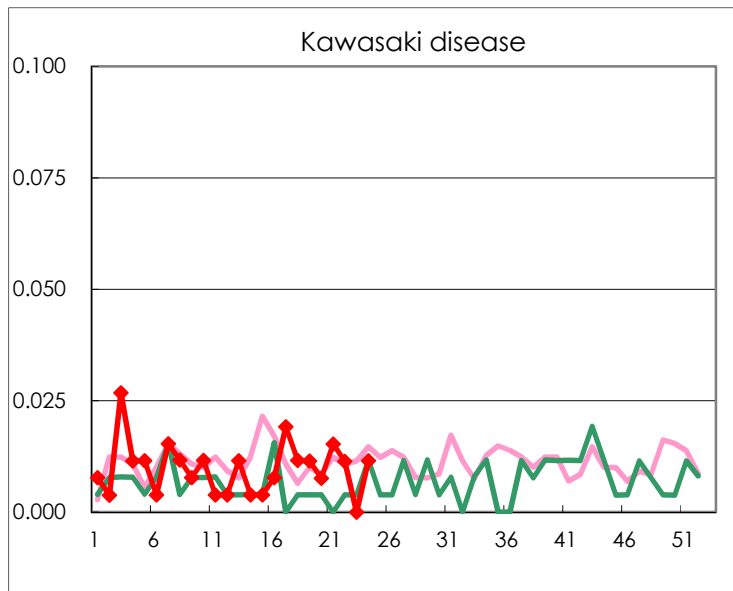
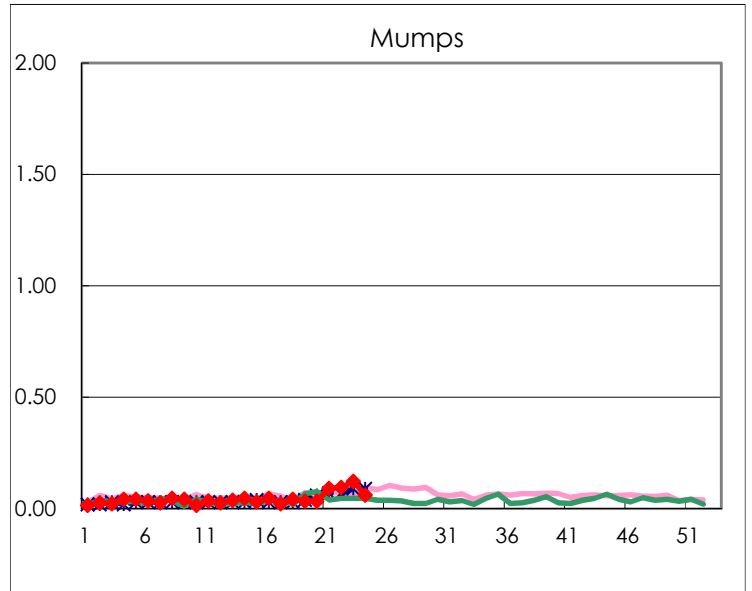
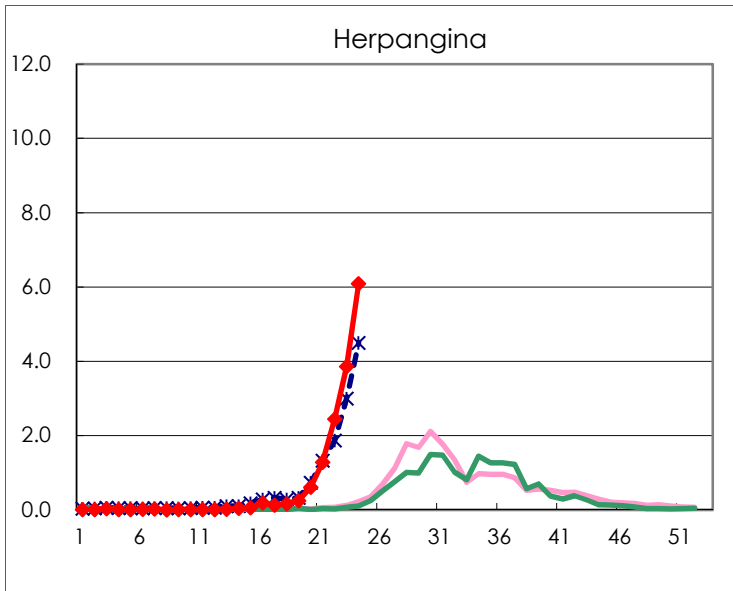
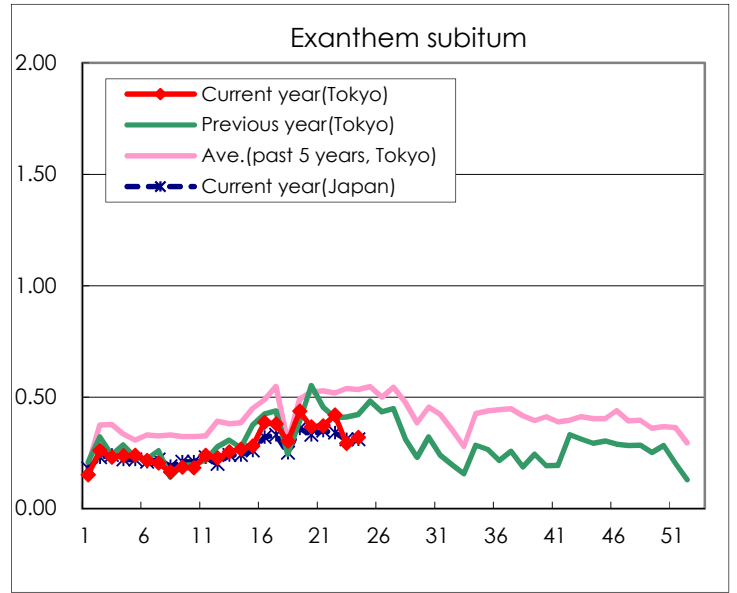
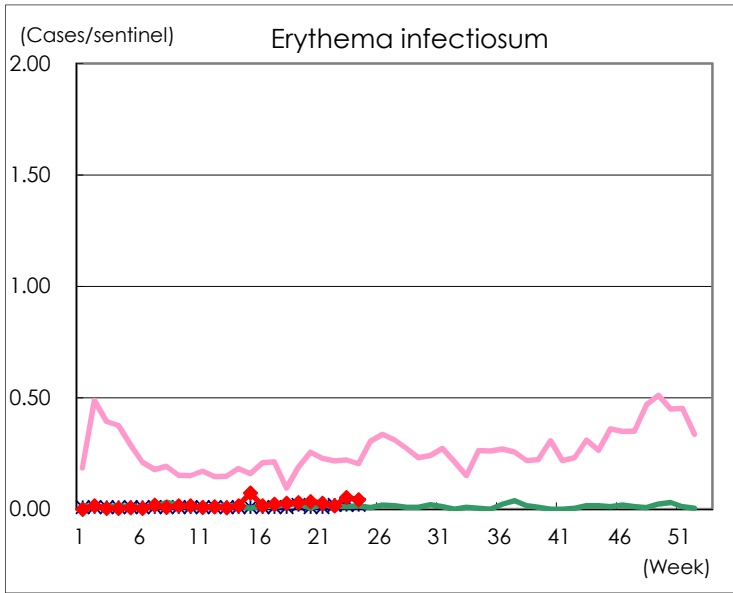
Number of patients with the diseases to be reported
by the designated clinics and hospitals

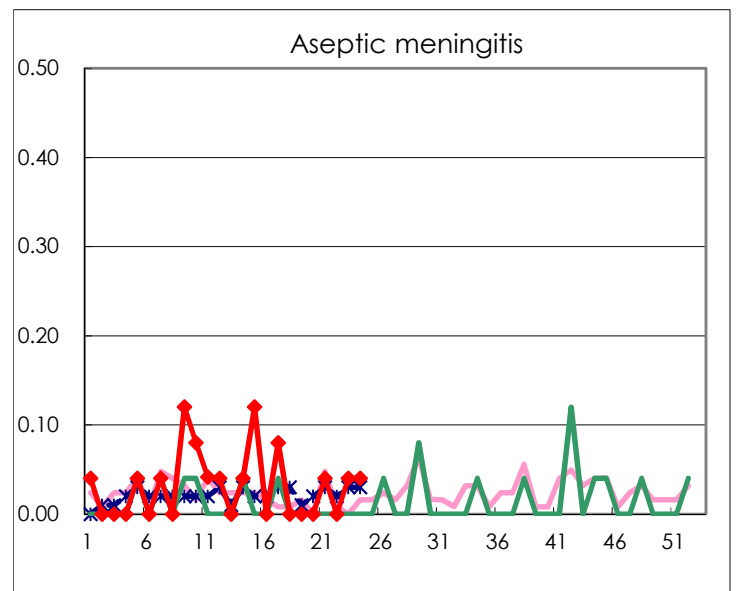
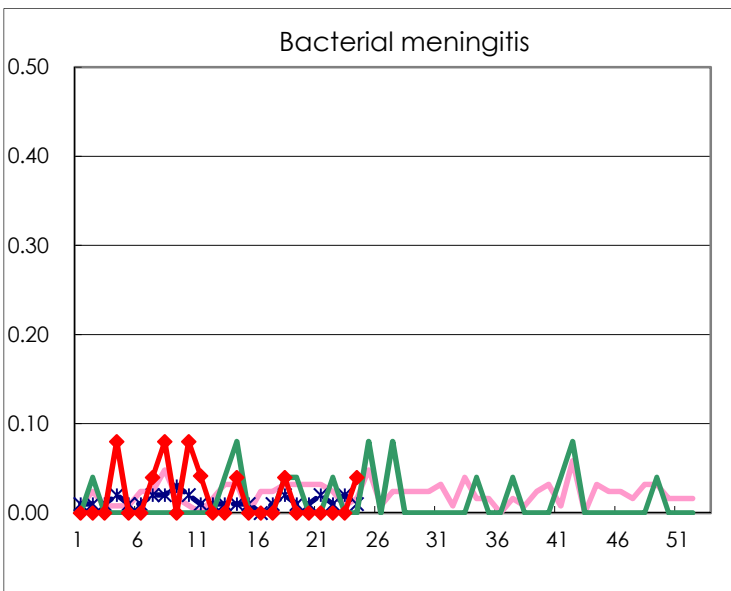
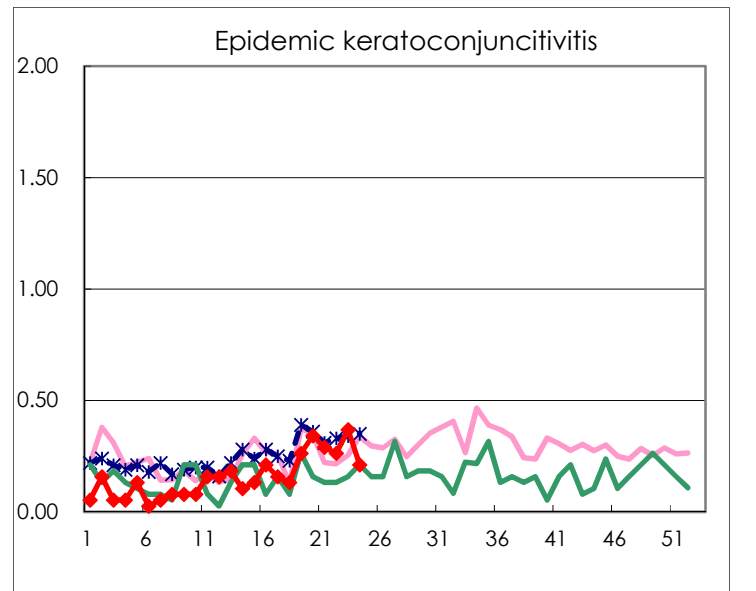
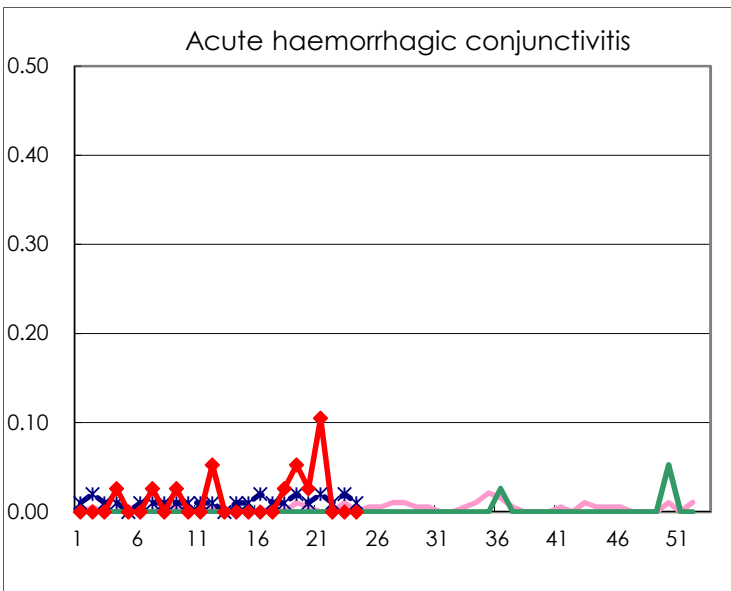
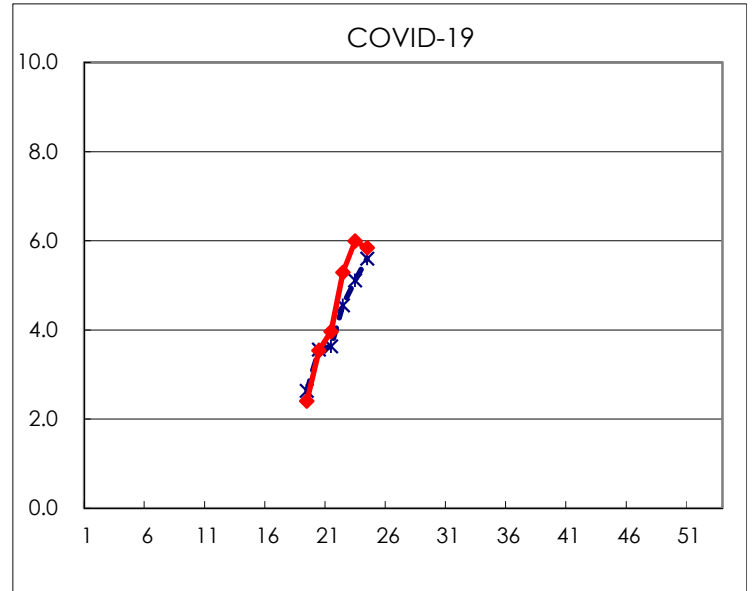
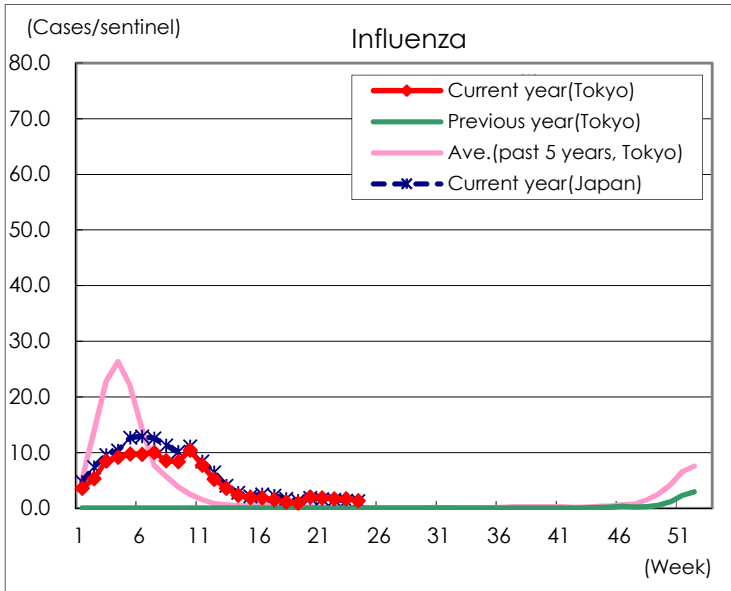
Diseases	Tokyo				
	21st	22nd	23rd	24th	/sentinel
Respiratory syncytial virus infection	293	364	448	604	2.32
Pharyngoconjunctival fever	147	147	130	134	0.52
Group A streptococcal pharyngitis	441	474	487	450	1.73
Infectious gastroenteritis	1,955	2,013	1,799	1,743	6.70
Chickenpox	46	39	25	34	0.13
Hand, foot, and mouth disease	95	102	170	191	0.73
Erythema infectiosum	7	4	14	11	0.04
Exanthem subitum	97	110	76	83	0.32
Herpangina	336	640	1,007	1,584	6.09
Mumps	24	25	32	16	0.06
Kawasaki disease	4	3		3	0.01
Cold with exanthems	15	22	16	31	0.12
Influenza	785	706	701	550	1.33
COVID-19	1,649	2,207	2,486	2,420	5.85
Acute hemorrhagic conjunctivitis	4				
Epidemic keratoconjunctivitis	11	10	14	8	0.21
Bacterial meningitis				1	0.04
Aseptic meningitis	1		1	1	0.04
Mycoplasma pneumonia	1	3	1		
Chlamydial pneumonia (excluding psittacosis)					
Infectious gastroenteritis (only by Rotavirus)					
Influenza-Associated Hospitalizations	2	3	3	2	0.08

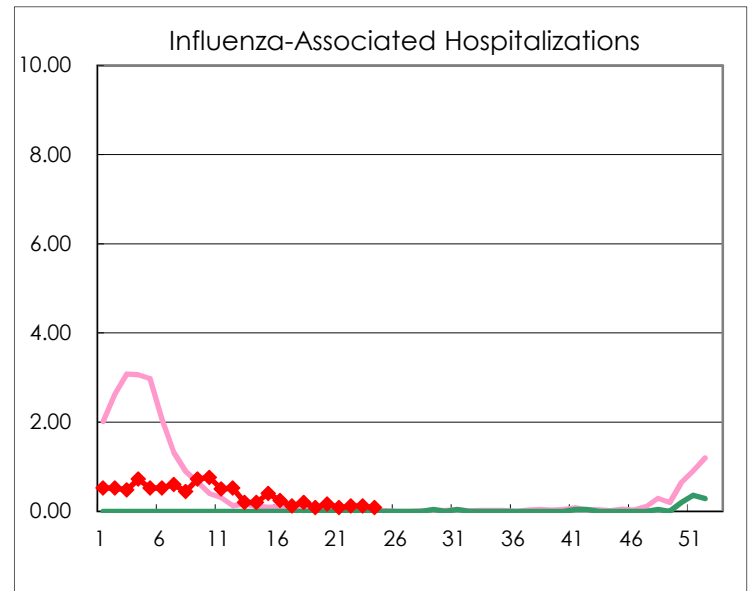
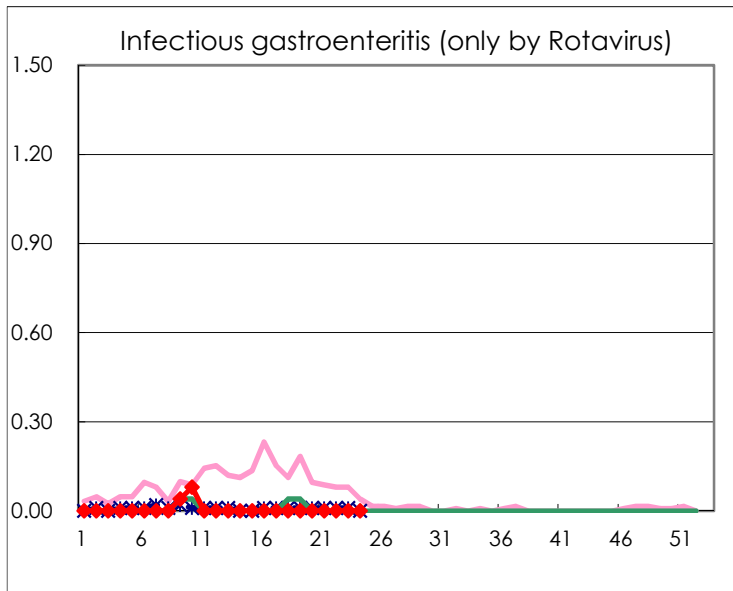
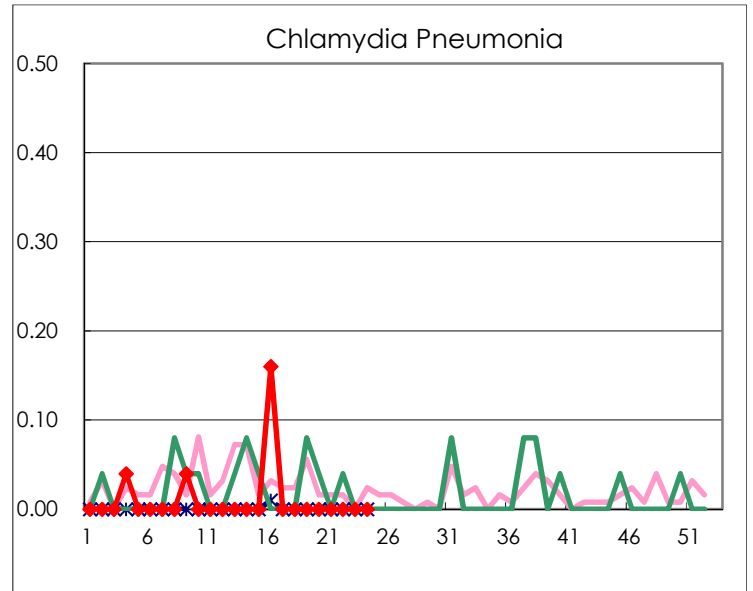
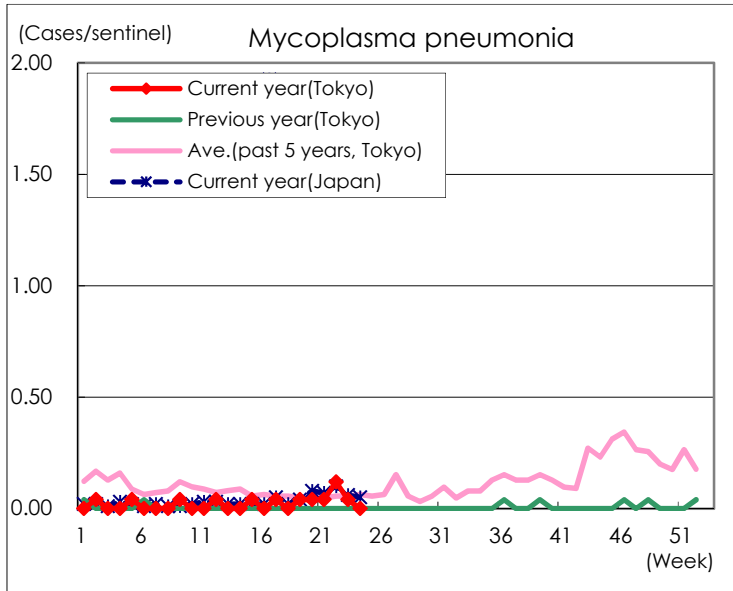
(Blank means 0.)

Disease Trend Graph (weekly reported cases per sentinel in comparison)









Number of sentinel facilities for weekly reporting		
Types of sentinels	Number of sentinels	Sentinels having reported
Pediatric	264	260
Influenza	419	414
Ophthalmic	39	38
Specially-designated	25	25