
INFECTIOUS DISEASES WEEKLY REPORT

TOKYO IDWR

Tokyo Metropolitan Infectious Disease Surveillance Center

29 June 2023 / Number 25
(6/19 ~ 6/25)

Surveillance System in Tokyo, Japan

The infectious diseases which all physicians must report
All physicians must report to health centers the incidence of the diseases which are shown at page one. Health centers electronically report the individual cases to Tokyo Metropolitan Infectious Disease Surveillance Center.

The infectious diseases required to be reported by the sentinels
The numbers of patients who visit the sentinel clinics or hospitals during a week are reported to health centers in Tokyo. And they electronically report the numbers to Tokyo Metropolitan Infectious Disease Surveillance Center. We have about 500 sentinel clinics and hospitals in Tokyo.

Tokyo Metropolitan Institute of Public Health

TEL:81-3-3363-3213 FAX:81-3-5332-7365

e-mail:tmiph@section.metro.tokyo.jp

URL:idsc.tmiph.metro.tokyo.lg.jp/

Number of patients with the diseases which all physicians must report

Category	Diseases	Tokyo					Japan	
		22nd	23rd	24th	25th	Cum 2023	25th	Cum 2023
I	Ebola hemorrhagic fever							
	Crimean-Congo hemorrhagic fever							
	Smallpox							
	South American hemorrhagic fever							
	Plague							
	Marburg disease							
	Lassa fever							
II	Acute poliomyelitis							
	Tuberculosis	43	39	39	37	904	218	6,411
	Diphtheria							
	Severe Acute Respiratory Syndrome(SARS)							
	Middle East Respiratory Syndrome (MERS)							
	Avian influenza H5N1							
	Avian influenza H7N9							
III	Cholera					1		1
	Shigellosis	1		1		4	1	15
	Enterohemorrhagic Escherichia coli infection	13	16	20	13	123	96	947
	Typhoid fever				2	4	2	21
	Paratyphoid fever					1		6
IV	Hepatitis E	5	1	5	2	102	13	295
	West Nile fever							
	Hepatitis A	1				5		26
	Echinococcosis							5
	Mpox	2	3	4	1	136	1	178
	Yellow fever							
	Psittacosis							5
	Omsk hemorrhagic fever							
	Relapsing fever						3	8
	Kyasanur forest disease							
	Q fever							
	Rabies							
	Coccidioidomycosis							1
	Zika virus infection							
	Severe Fever with Thrombocytopenia Syndrome						5	78
	Hemorrhagic fever with renal syndrome							
	Western equine encephalitis							
	Tick-borne encephalitis							
	Anthrax							
	Chikungunya fever							1
	Scrub typhus(Tsutsugamushi disease)					4	2	99
	Dengue fever		3	1		12		33
	Eastern equine encephalitis							
	Avian influenza (excluding H5N1 and H7N9)							
	Nipah virus infection							
	Japanese spotted fever		1			1	12	134
	Japanese encephalitis							
	Hantavirus pulmonary syndrome							
	Herpes B virus infection							
	Glanders							
	Brucellosis							1
	Venezuelan equine encephalitis							
	Hendra virus infection							
Epidemic typhus								
Botulism								
Malaria		1			4		7	
Tularemia								
Lyme disease		1			1	1	4	
Lyssavirus infection(excluding rabies)								
Rift valley fever								
Melioidosis								
Legionellosis	3		4	3	67	73	901	
Leptospirosis							4	
Rocky mountain spotted fever								

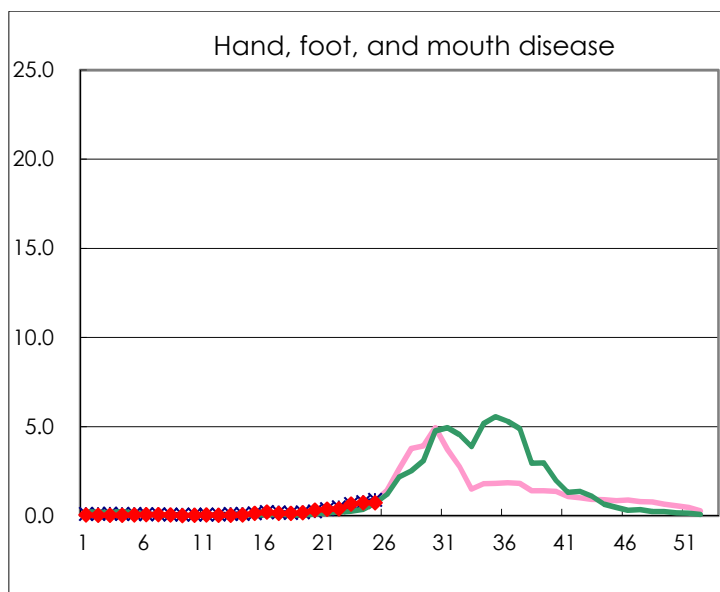
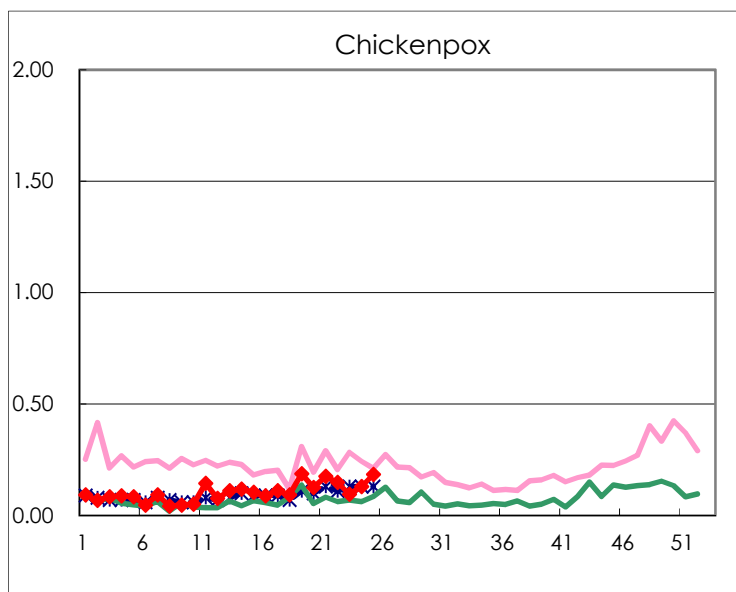
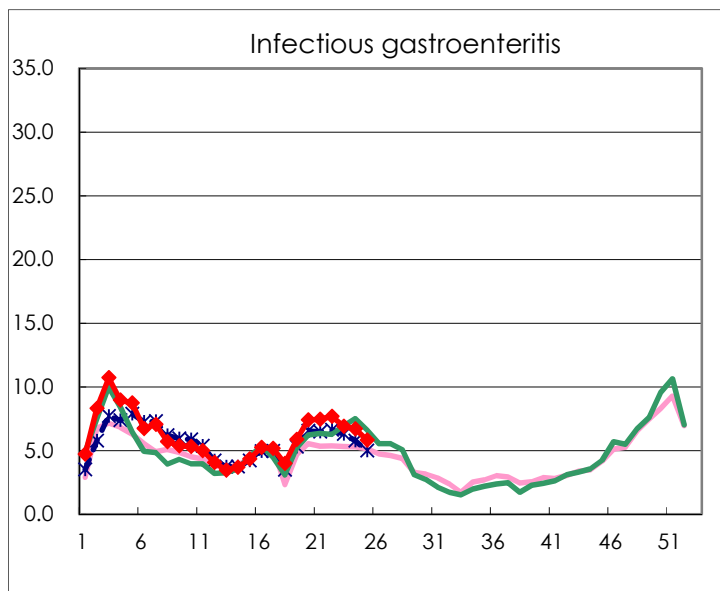
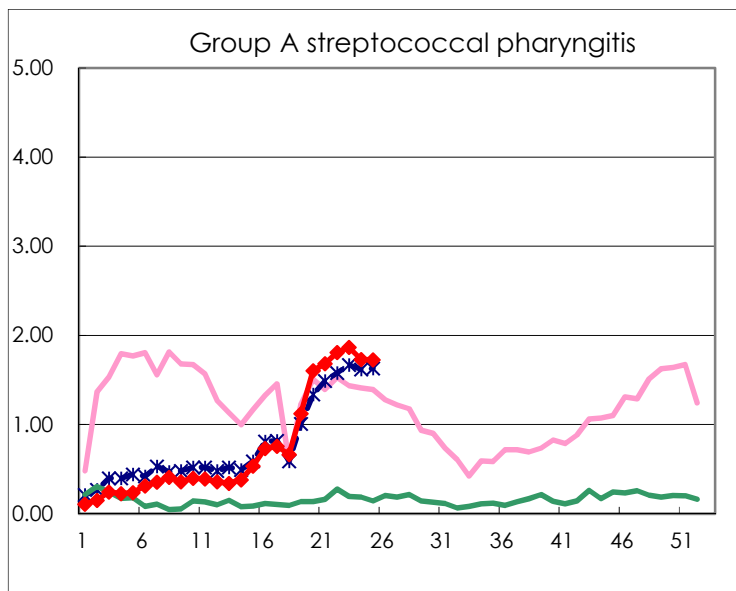
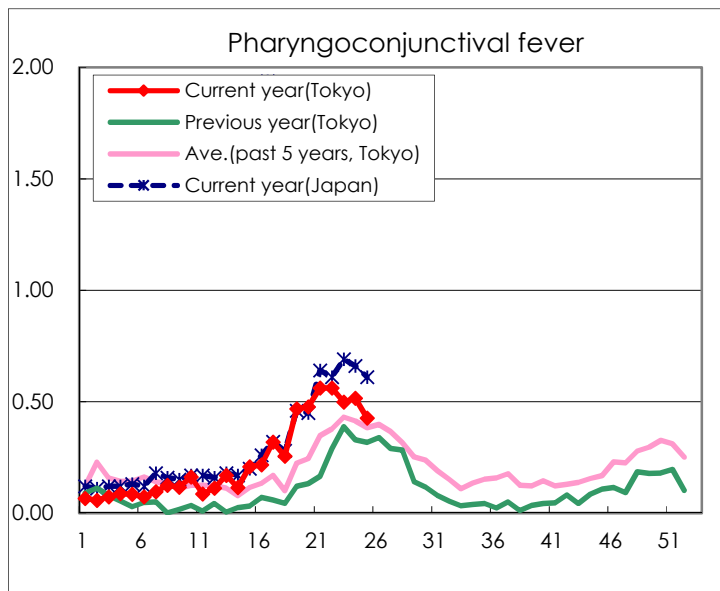
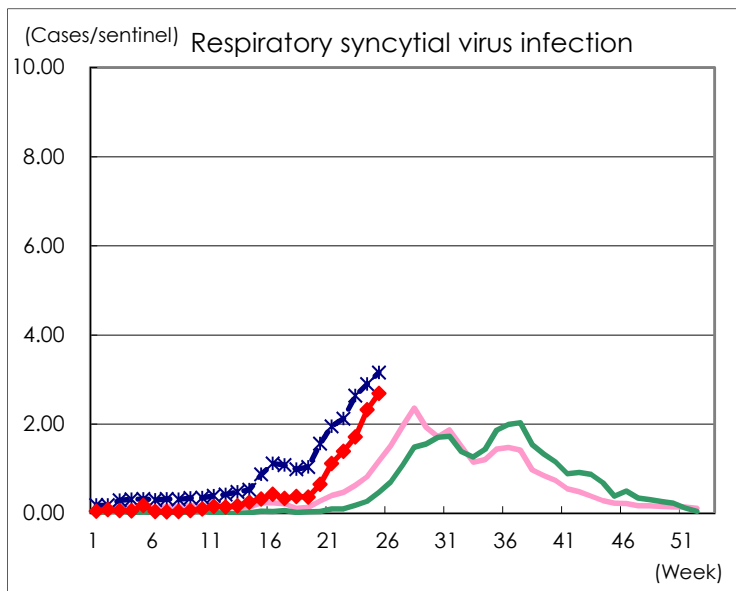
Category	Diseases	Tokyo					Japan	
		22nd	23rd	24th	25th	Cum 2023	25th	Cum 2023
V	Amebiasis	1	2	3	1	44	5	237
	Viral hepatitis(excluding hepatitis A and E)			2		27	2	125
	CRE infection	4		4	4	93	34	846
	Acute Flaccid Paralysis (excluding Acute poliomyelitis)			1		5		26
	Acute encephalitis(excluding JE and WNE)				1	16	10	239
	Cryptosporidiosis						1	4
	Creutzfeldt-Jakob disease		2	1		9	2	74
	Severe invasive streptococcal infections(TSLS)	5	1	2		57	7	397
	Acquired immunodeficiency syndrome (AIDS)	8	11	5	2	144	9	453
	Giardiasis					6		24
	Invasive <i>Haemophilus influenzae</i> disease		1	2	1	17	14	228
	Invasive meningococcal disease		1			1		8
	Invasive pneumococcal disease	1	5	1	3	88	20	914
	Varicella (limited to hospitalized case)	3	5		1	38	5	185
	Congenital rubella syndrome							
	Syphilis	88	89	64	79	1,810	218	7,124
	Disseminated cryptococcosis				1	11	1	88
	Tetanus				1	2	5	40
	Vancomycin-resistant <i>S. aureus</i> infection							
	Vancomycin-resistant <i>Enterococcus</i> infection					7	3	69
	Pertussis	2	3	12	7	58	30	402
Rubella	1		1		4		7	
Measles			1		6	1	19	
MDRA infection					1	1	8	

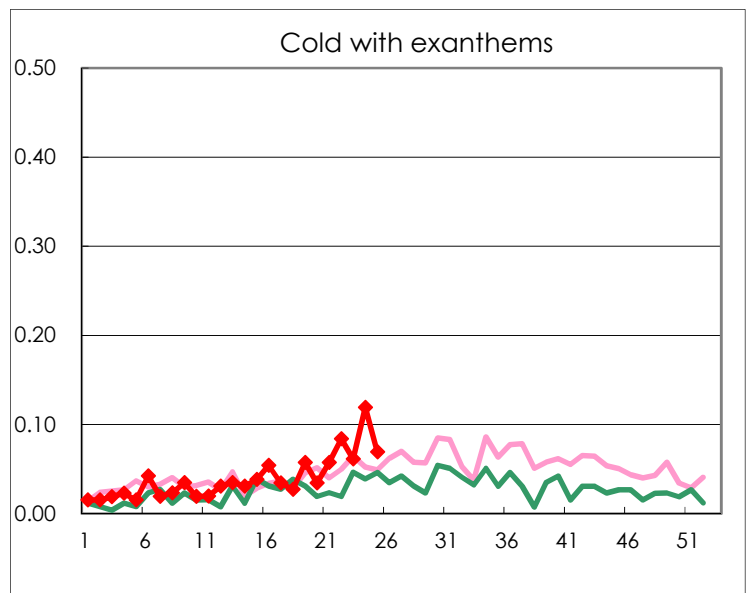
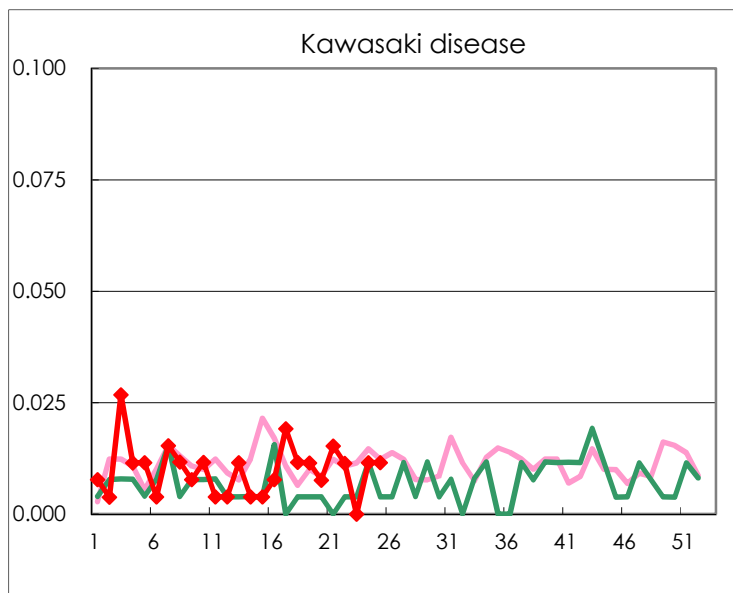
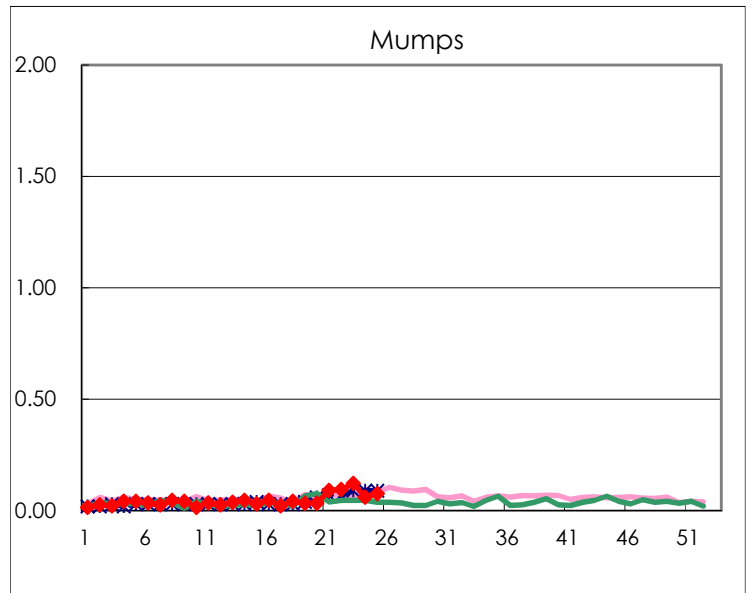
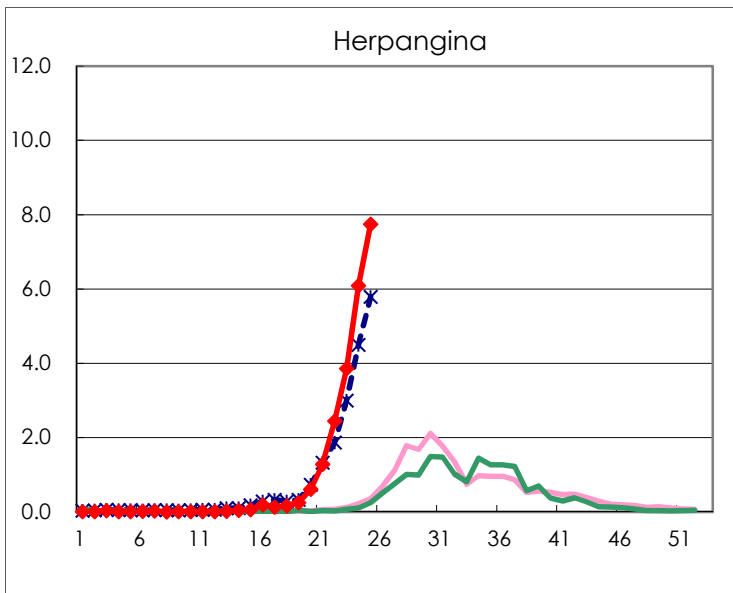
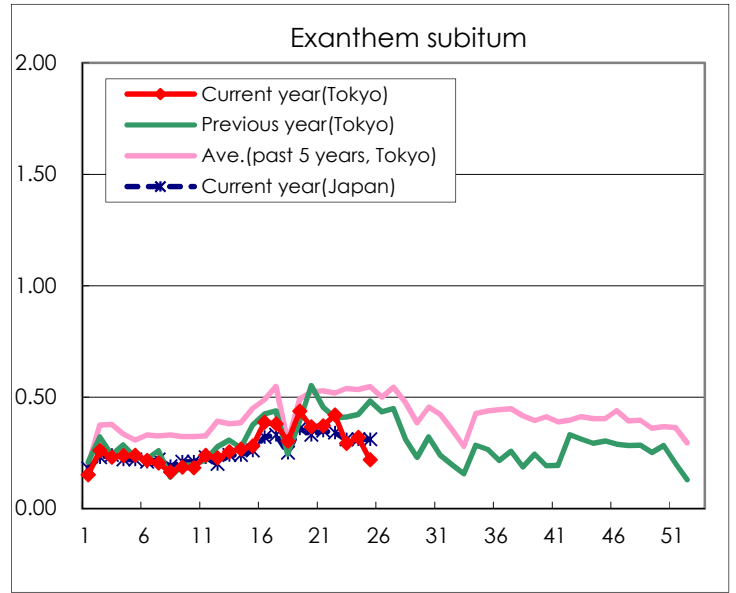
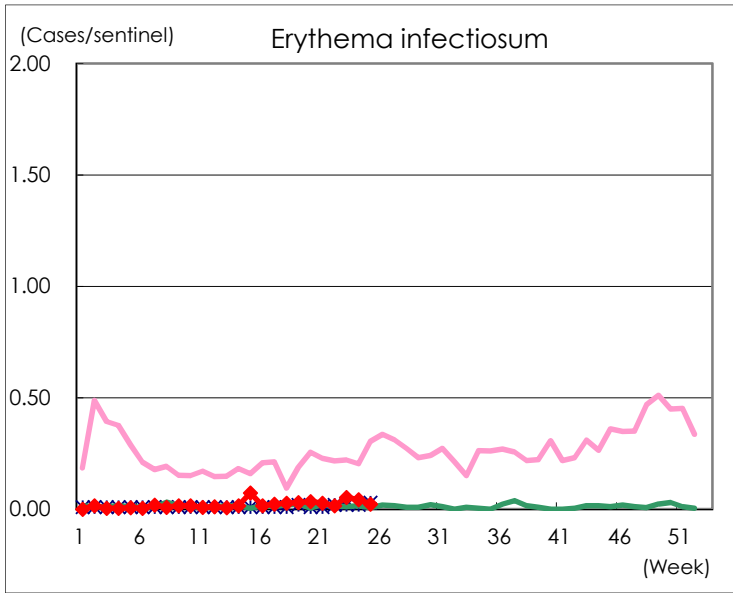
Number of patients with the diseases to be reported
by the designated clinics and hospitals

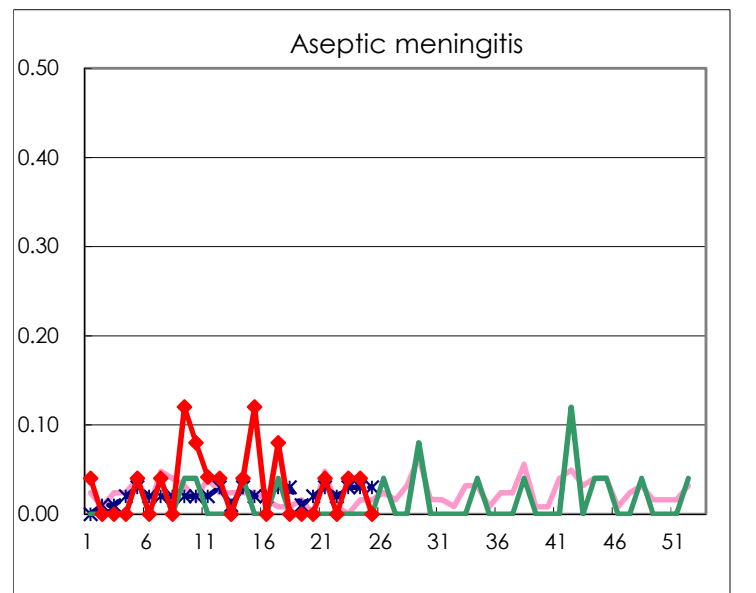
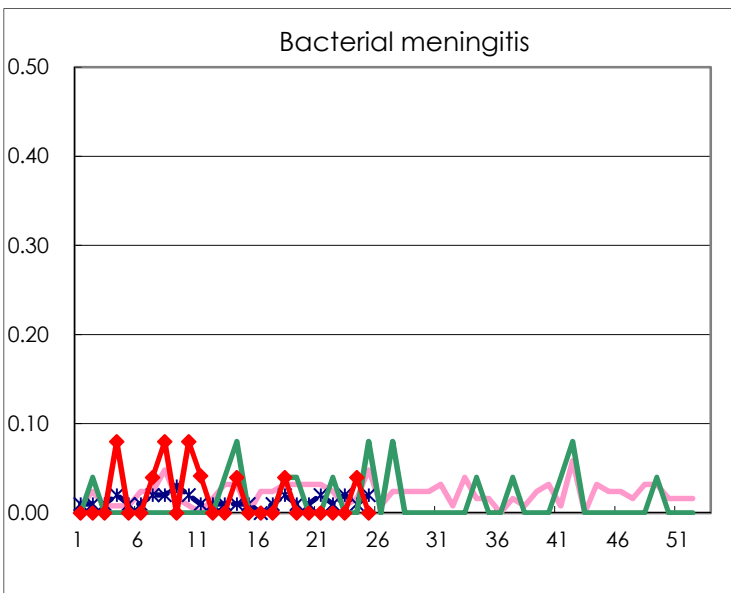
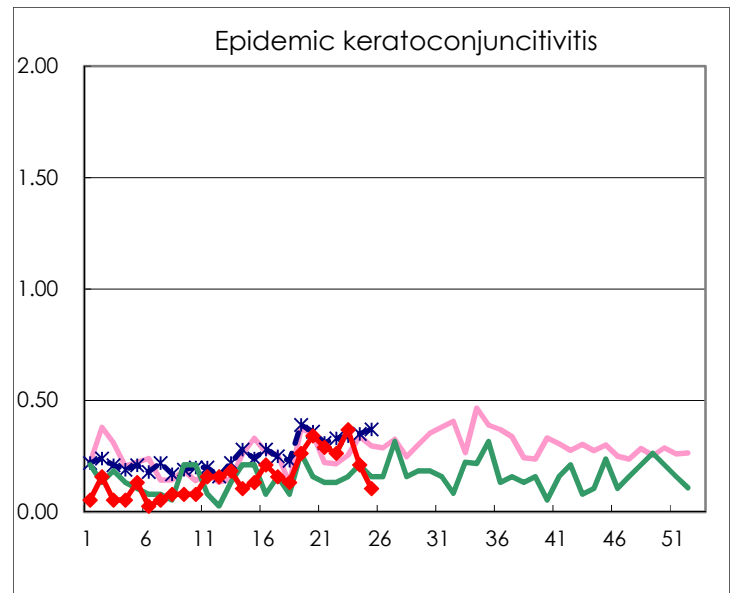
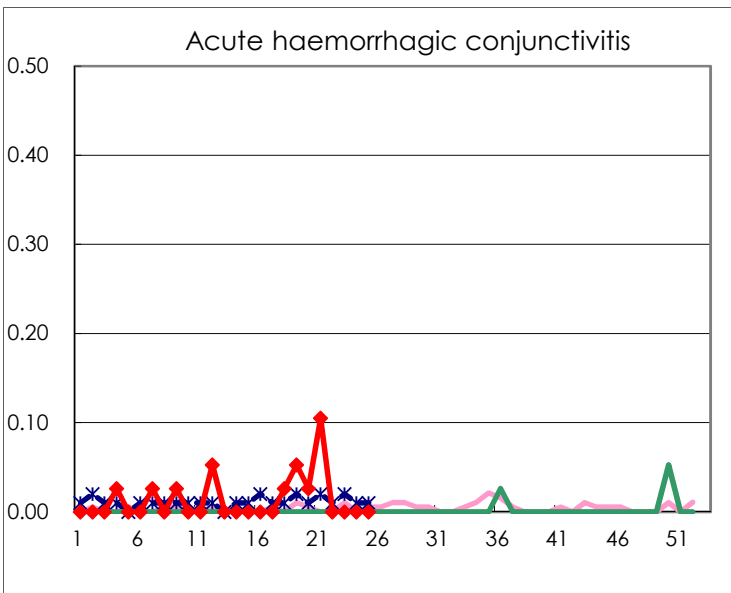
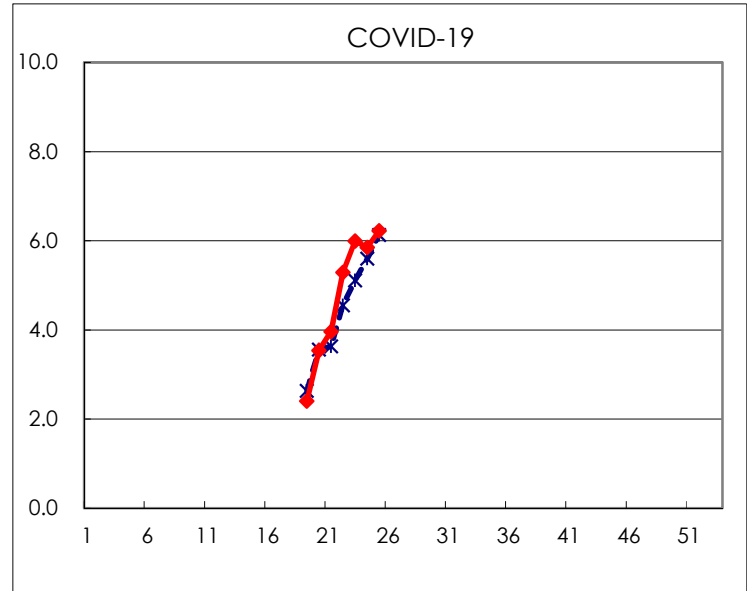
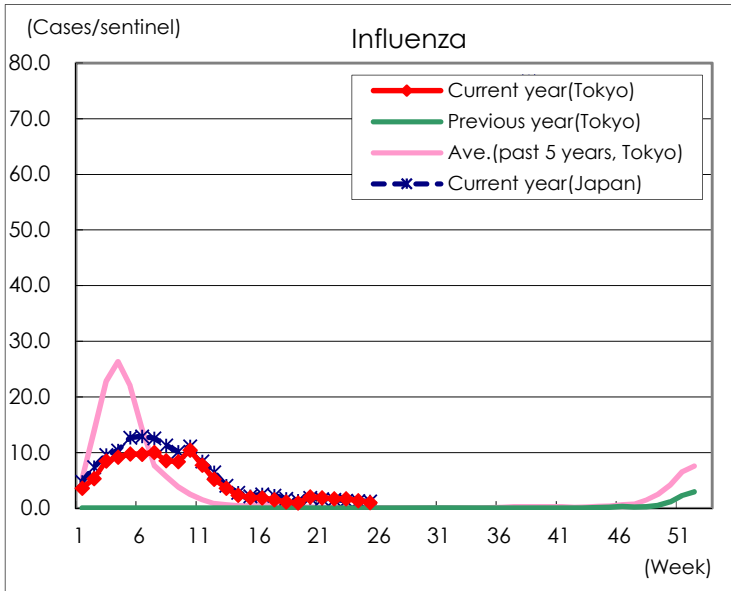
Diseases	Tokyo				
	22nd	23rd	24th	25th	/sentinel
Respiratory syncytial virus infection	364	448	604	700	2.69
Pharyngoconjunctival fever	147	130	134	111	0.43
Group A streptococcal pharyngitis	474	487	450	449	1.73
Infectious gastroenteritis	2,013	1,799	1,743	1,510	5.81
Chickenpox	39	25	34	48	0.18
Hand, foot, and mouth disease	102	170	191	188	0.72
Erythema infectiosum	4	14	11	6	0.02
Exanthem subitum	110	76	83	57	0.22
Herpangina	640	1,007	1,584	2,015	7.75
Mumps	25	32	16	20	0.08
Kawasaki disease	3		3	3	0.01
Cold with exanthems	22	16	31	18	0.07
Influenza	706	701	550	412	1.00
COVID-19	2,207	2,486	2,421	2,577	6.22
Acute hemorrhagic conjunctivitis					
Epidemic keratoconjunctivitis	10	14	8	4	0.11
Bacterial meningitis			1		
Aseptic meningitis		1	1		
Mycoplasma pneumonia	3	1			
Chlamydial pneumonia (excluding psittacosis)					
Infectious gastroenteritis (only by Rotavirus)					
Influenza-Associated Hospitalizations	3	3	2	2	0.08

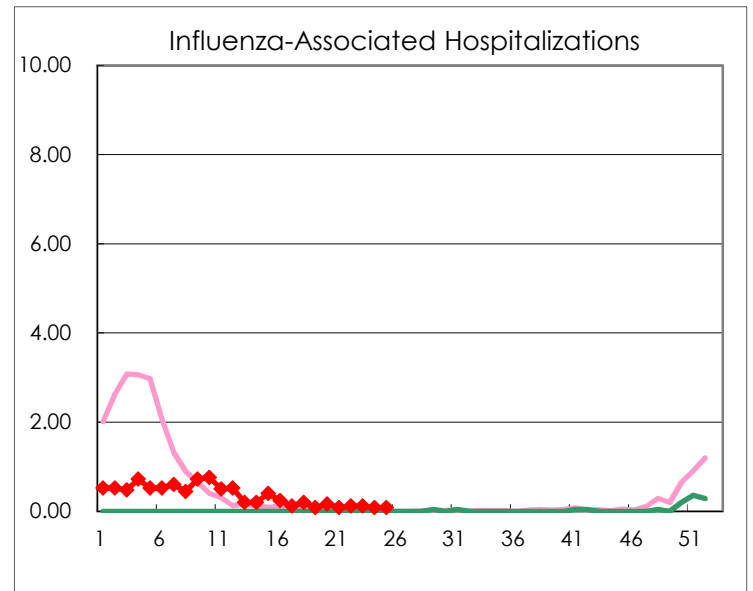
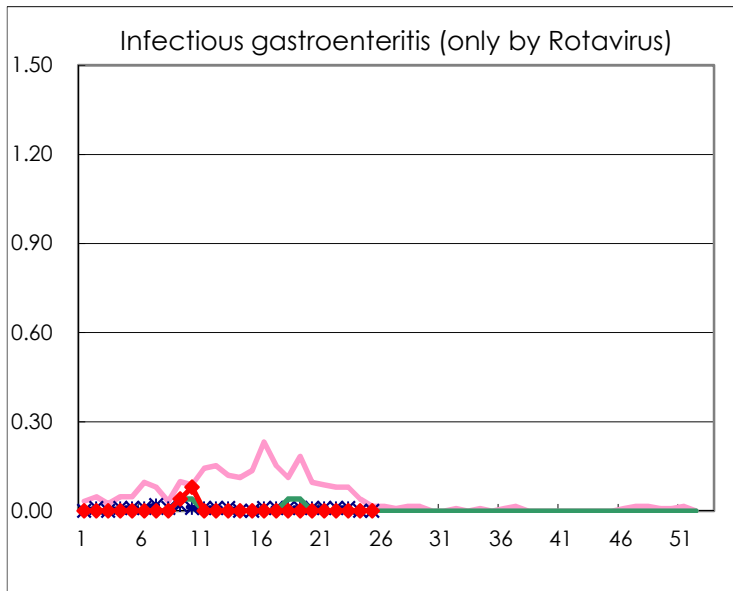
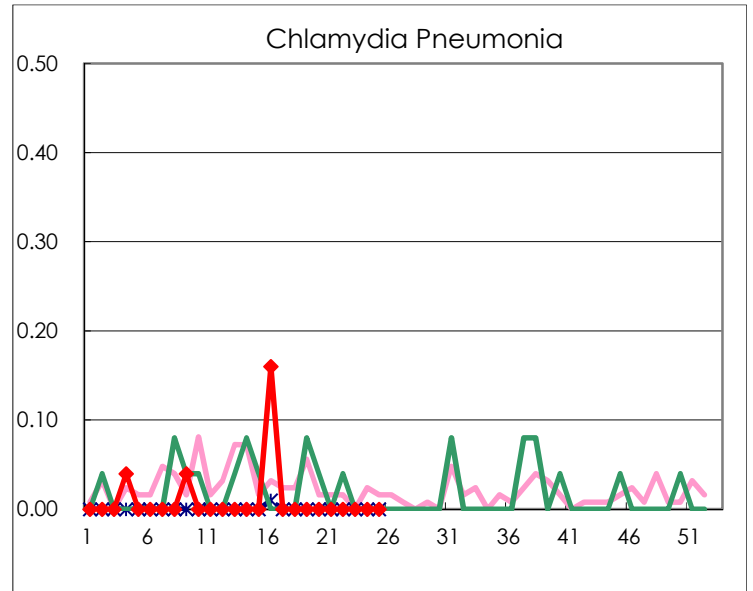
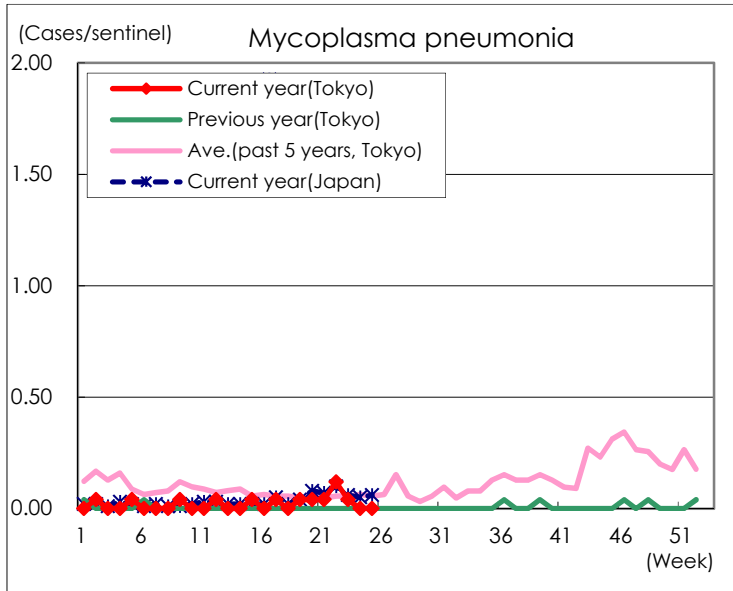
(Blank means 0.)

Disease Trend Graph (weekly reported cases per sentinel in comparison)









Number of sentinel facilities for weekly reporting		
Types of sentinels	Number of sentinels	Sentinels having reported
Pediatric	264	260
Influenza	419	414
Ophthalmic	39	38
Specially-designated	25	25