
INFECTIOUS DISEASES WEEKLY REPORT

TOKYO IDWR

Tokyo Metropolitan Infectious Disease Surveillance Center

6 July 2023 / Number 26
(6/26 ~ 7/2)

Surveillance System in Tokyo, Japan

The infectious diseases which all physicians must report
All physicians must report to health centers the incidence of the diseases which are shown at page one. Health centers electronically report the individual cases to Tokyo Metropolitan Infectious Disease Surveillance Center.

The infectious diseases required to be reported by the sentinels
The numbers of patients who visit the sentinel clinics or hospitals during a week are reported to health centers in Tokyo. And they electronically report the numbers to Tokyo Metropolitan Infectious Disease Surveillance Center. We have about 500 sentinel clinics and hospitals in Tokyo.

Tokyo Metropolitan Institute of Public Health

TEL:81-3-3363-3213 FAX:81-3-5332-7365

e-mail:tmiph@section.metro.tokyo.jp

URL:idsc.tmiph.metro.tokyo.lg.jp/

Number of patients with the diseases which all physicians must report

Category	Diseases	Tokyo					Japan		
		23rd	24th	25th	26th	Cum 2023	26th	Cum 2023	
I	Ebola hemorrhagic fever								
	Crimean-Congo hemorrhagic fever								
	Smallpox								
	South American hemorrhagic fever								
	Plague								
	Marburg disease								
	Lassa fever								
II	Acute poliomyelitis								
	Tuberculosis	40	41	39	31	942	252	6,735	
	Diphtheria								
	Severe Acute Respiratory Syndrome(SARS)								
	Middle East Respiratory Syndrome (MERS)								
	Avian influenza H5N1								
	Avian influenza H7N9								
III	Cholera					1		1	
	Shigellosis		1			4	2	17	
	Enterohemorrhagic Escherichia coli infection	16	20	13	11	134	139	1,099	
	Typhoid fever			2		4		21	
	Paratyphoid fever					1		6	
IV	Hepatitis E	1	5	2	5	107	10	308	
	West Nile fever								
	Hepatitis A					5	3	29	
	Echinococcosis						1	6	
	Mpox	3	4	1	2	138	2	180	
	Yellow fever								
	Psittacosis							5	
	Omsk hemorrhagic fever								
	Relapsing fever						2	10	
	Kyasanur forest disease								
	Q fever								
	Rabies								
	Coccidioidomycosis							1	
	Zika virus infection								
	Severe Fever with Thrombocytopenia Syndrome						5	83	
	Hemorrhagic fever with renal syndrome								
	Western equine encephalitis								
	Tick-borne encephalitis								
	Anthrax								
	Chikungunya fever							1	2
	Scrub typhus(Tsutsugamushi disease)					4	3	104	
	Dengue fever	3	1			12	1	34	
	Eastern equine encephalitis								
	Avian influenza (excluding H5N1 and H7N9)								
	Nipah virus infection								
	Japanese spotted fever	1				1	7	144	
	Japanese encephalitis								
	Hantavirus pulmonary syndrome								
	Herpes B virus infection								
	Glanders								
	Brucellosis							1	
	Venezuelan equine encephalitis								
	Hendra virus infection								
	Epidemic typhus								
Botulism									
Malaria	1				4	1	8		
Tularemia									
Lyme disease	1				1	2	6		
Lyssavirus infection(excluding rabies)									
Rift valley fever									
Melioidosis									
Legionellosis		4	3	3	70	60	976		
Leptospirosis							4		
Rocky mountain spotted fever									

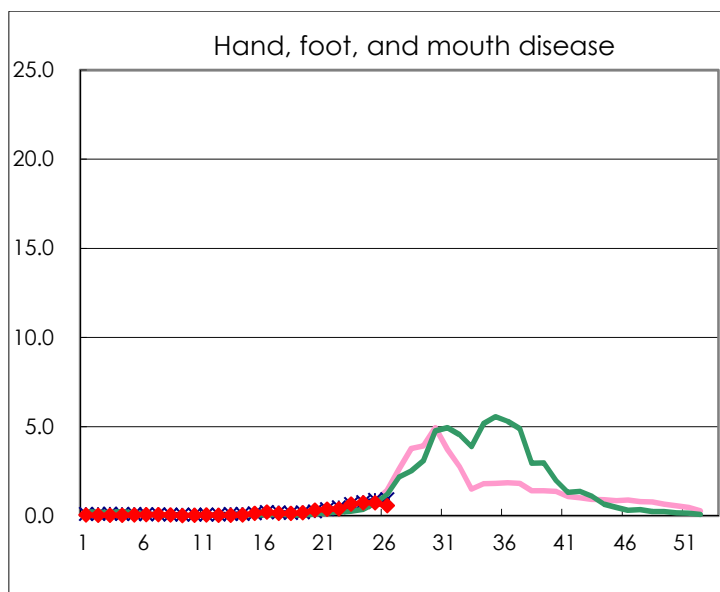
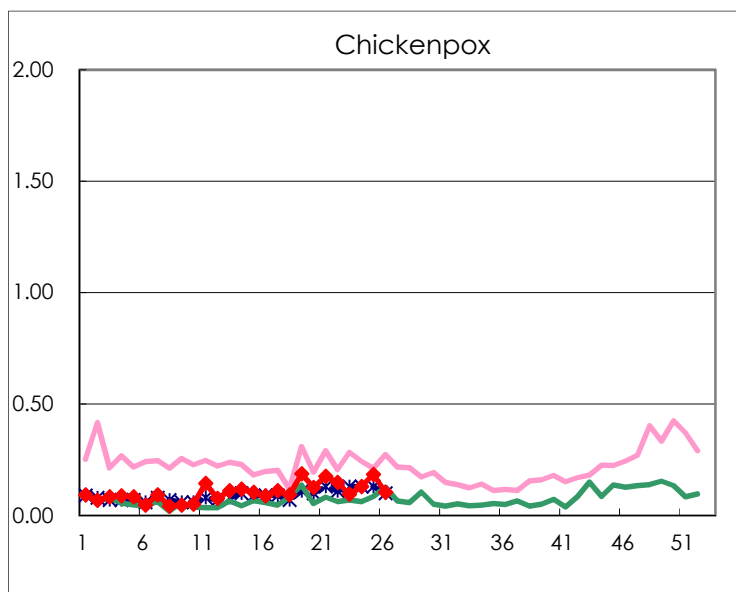
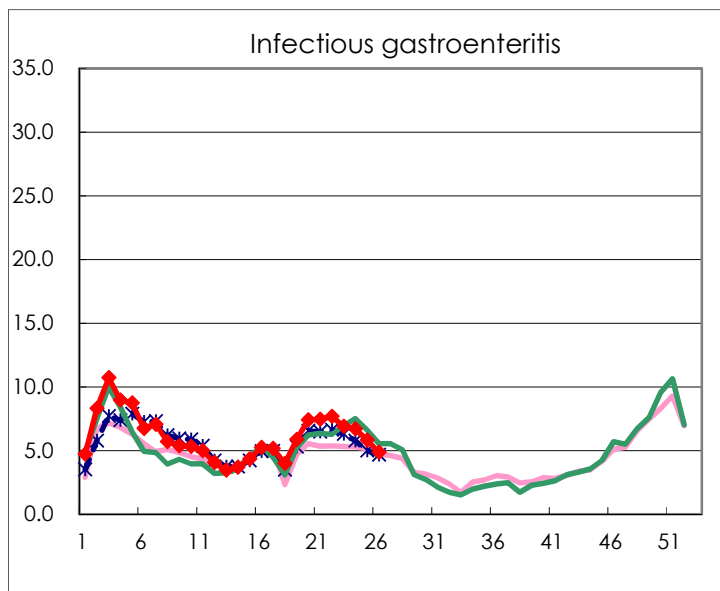
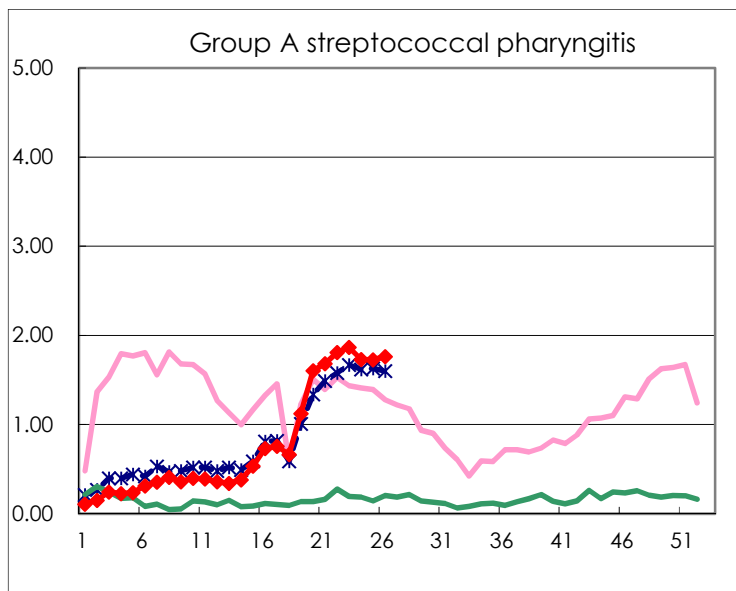
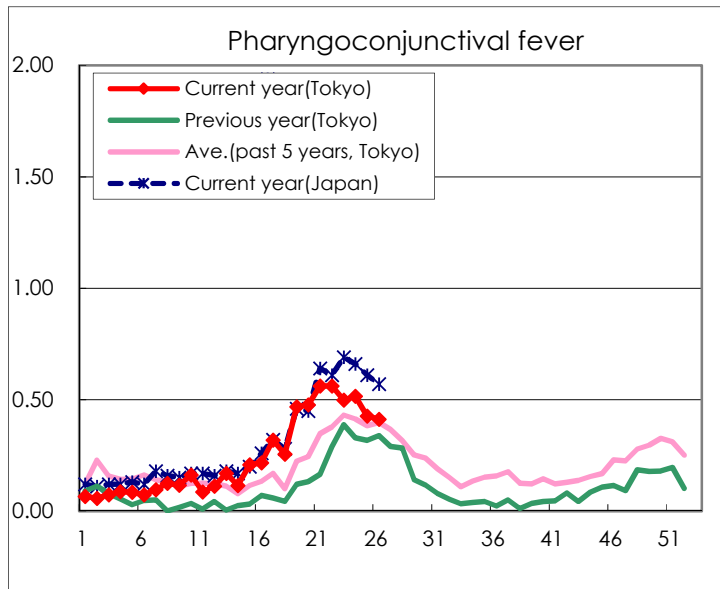
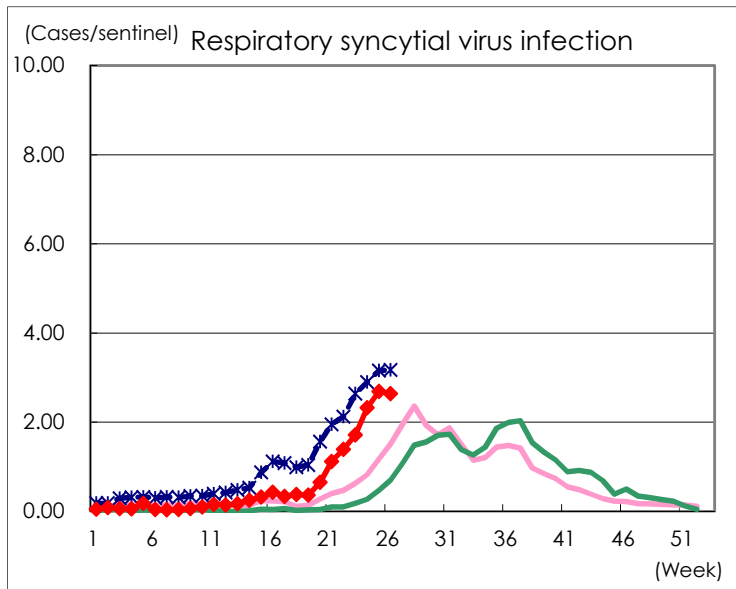
Category	Diseases	Tokyo					Japan	
		23rd	24th	25th	26th	Cum 2023	26th	Cum 2023
V	Amebiasis	2	3	1	2	46	5	245
	Viral hepatitis(excluding hepatitis A and E)		2		2	29	3	130
	CRE infection		4	4	4	97	24	880
	Acute Flaccid Paralysis (excluding Acute poliomyelitis)		1			5	1	25
	Acute encephalitis(excluding JE and WNE)			1		16	5	248
	Cryptosporidiosis							4
	Creutzfeldt-Jakob disease	2	1			9	2	76
	Severe invasive streptococcal infections(TSLS)	1	2		1	58	18	417
	Acquired immunodeficiency syndrome (AIDS)	11	5	2	9	153	11	474
	Giardiasis					6		24
	Invasive <i>Haemophilus influenzae</i> disease	1	2	1		17	16	249
	Invasive meningococcal disease	1				1	1	9
	Invasive pneumococcal disease	5	1	3	3	91	13	934
	Varicella (limited to hospitalized case)	5		1		38	6	191
	Congenital rubella syndrome							
	Syphilis	89	64	84	76	1,891	205	7,448
	Disseminated cryptococcosis			1		11	3	91
	Tetanus			1		2	4	44
	Vancomycin-resistant <i>S. aureus</i> infection							
	Vancomycin-resistant <i>Enterococcus</i> infection				3	10	1	73
	Pertussis	3	12	7	5	63	13	419
Rubella		1			4	1	8	
Measles		1			6	2	21	
MDRA infection					1	1	9	

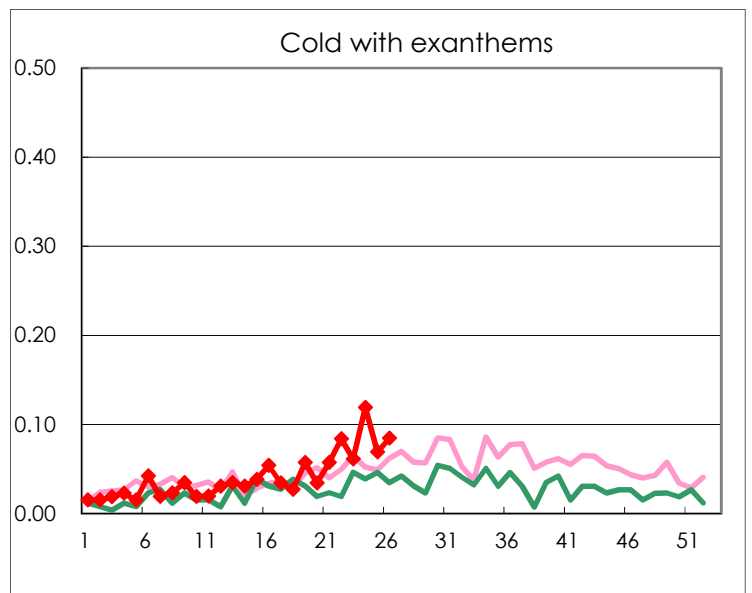
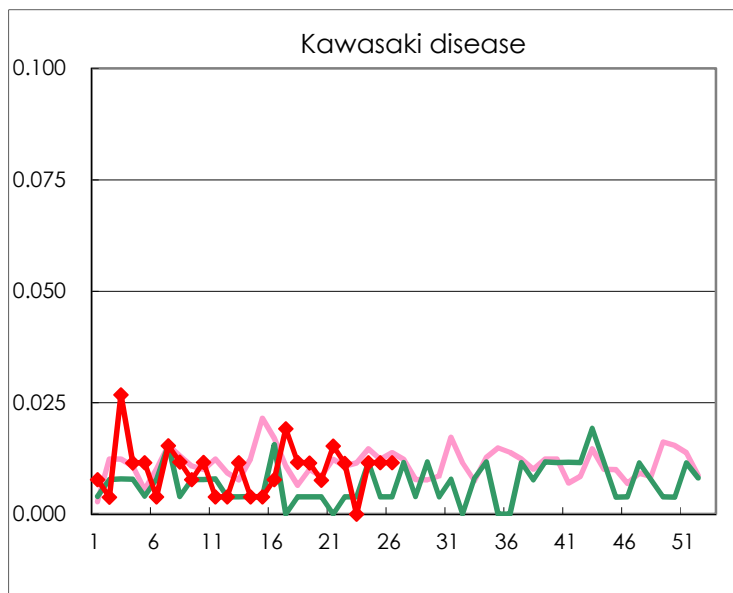
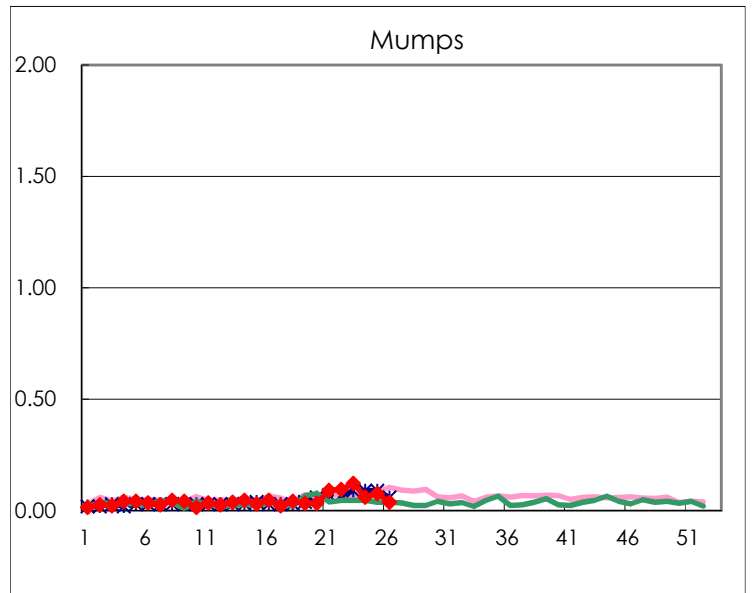
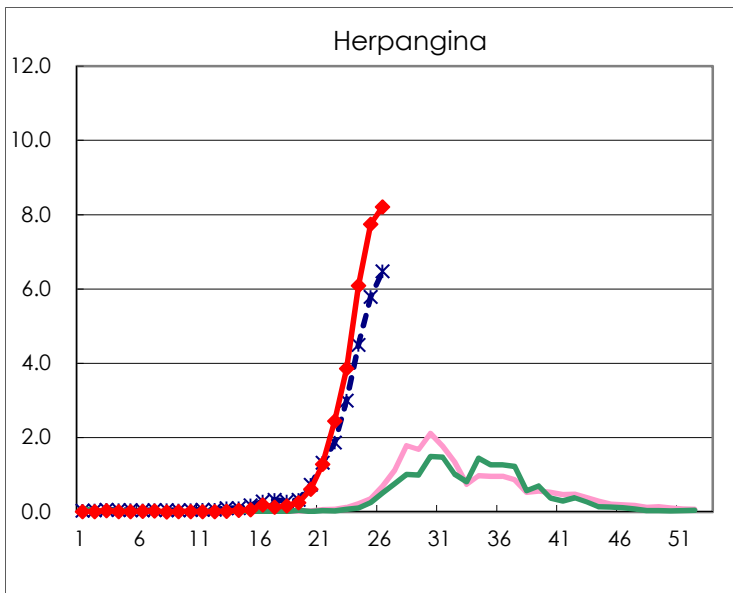
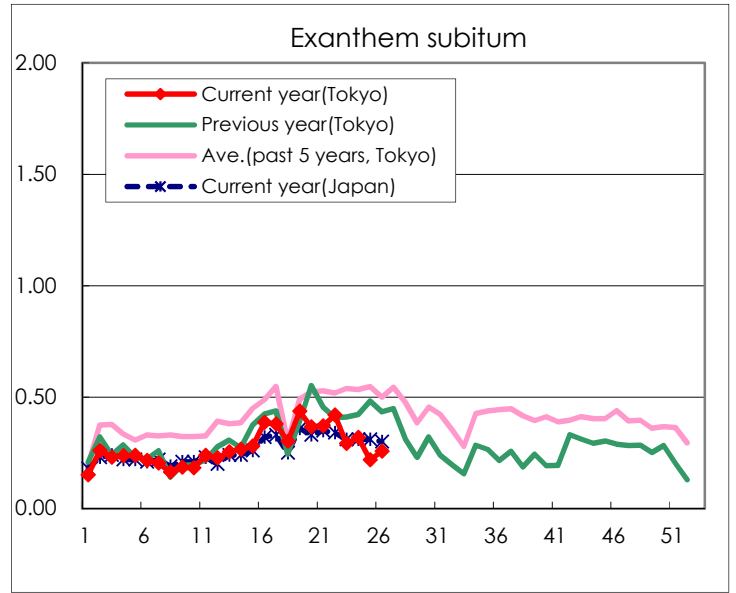
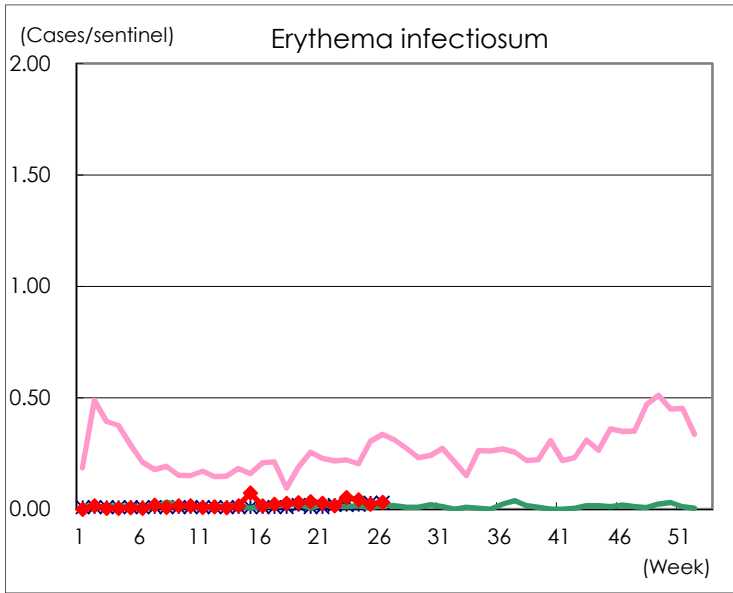
Number of patients with the diseases to be reported
by the designated clinics and hospitals

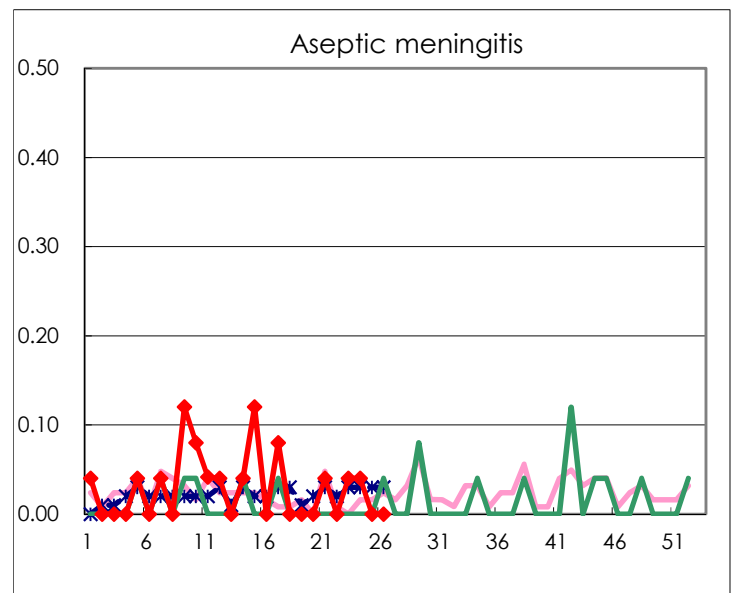
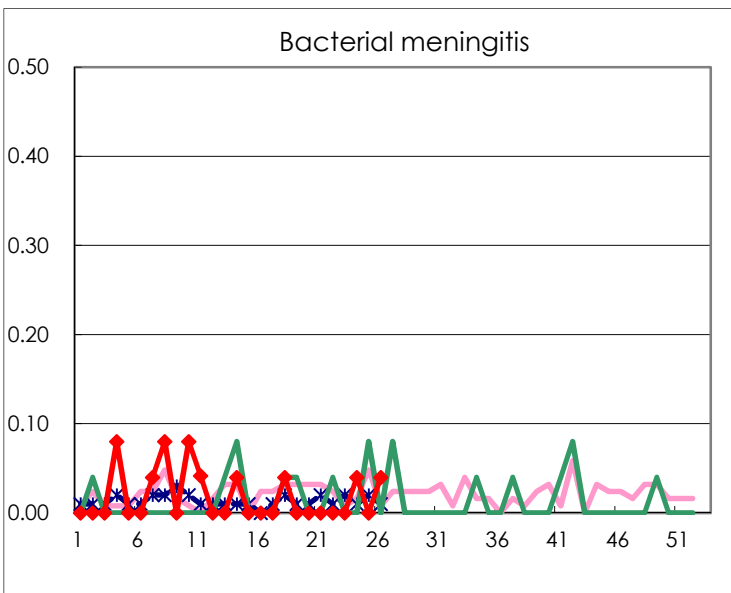
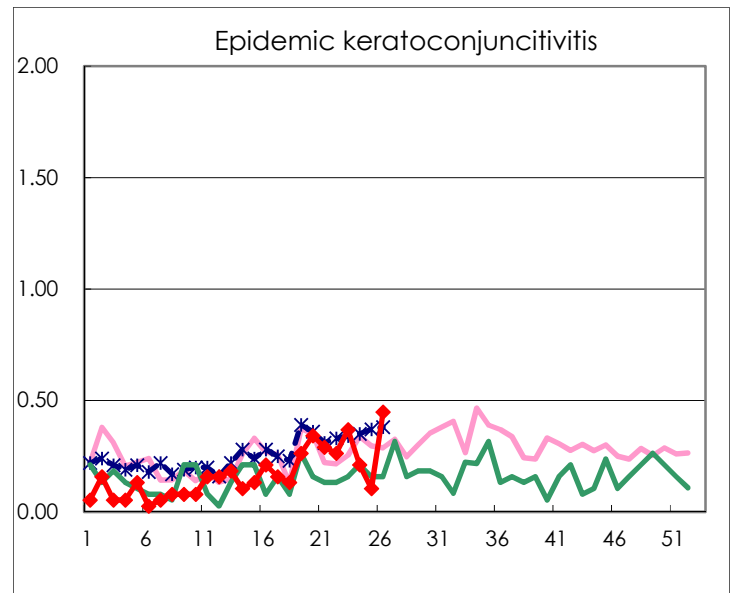
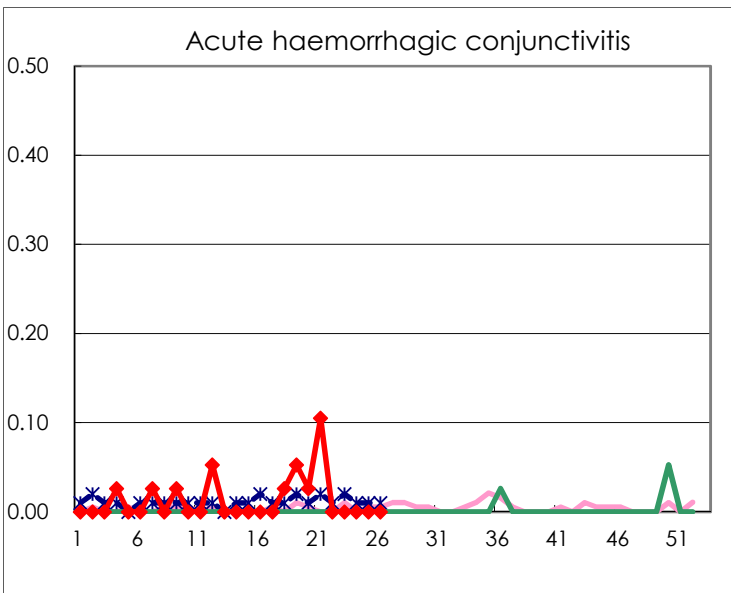
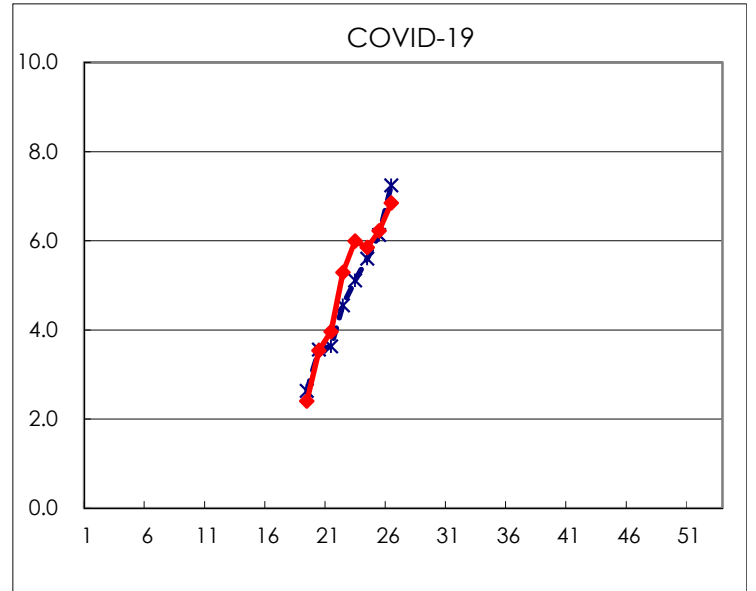
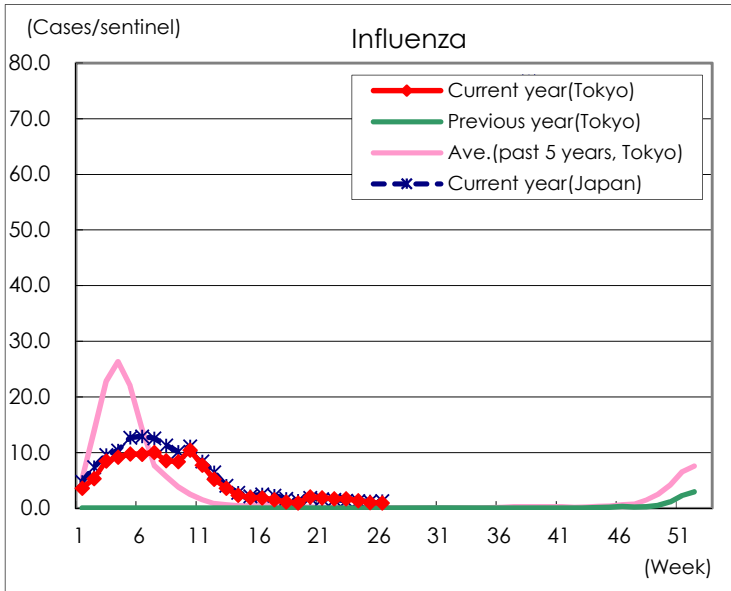
Diseases	Tokyo				
	23rd	24th	25th	26th	/sentinel
Respiratory syncytial virus infection	448	604	700	686	2.64
Pharyngoconjunctival fever	130	134	111	107	0.41
Group A streptococcal pharyngitis	487	450	449	458	1.76
Infectious gastroenteritis	1,799	1,743	1,510	1,262	4.85
Chickenpox	25	34	48	27	0.10
Hand, foot, and mouth disease	170	191	188	145	0.56
Erythema infectiosum	14	11	6	8	0.03
Exanthem subitum	76	83	57	67	0.26
Herpangina	1,007	1,584	2,015	2,136	8.22
Mumps	32	16	20	10	0.04
Kawasaki disease		3	3	3	0.01
Cold with exanthems	16	31	18	22	0.08
Influenza	701	550	412	382	0.92
COVID-19	2,486	2,421	2,577	2,841	6.85
Acute hemorrhagic conjunctivitis					
Epidemic keratoconjunctivitis	14	8	4	17	0.45
Bacterial meningitis		1		1	0.04
Aseptic meningitis	1	1			
Mycoplasma pneumonia	1				
Chlamydial pneumonia (excluding psittacosis)					
Infectious gastroenteritis (only by Rotavirus)					
Influenza-Associated Hospitalizations	3	2	2	1	0.04

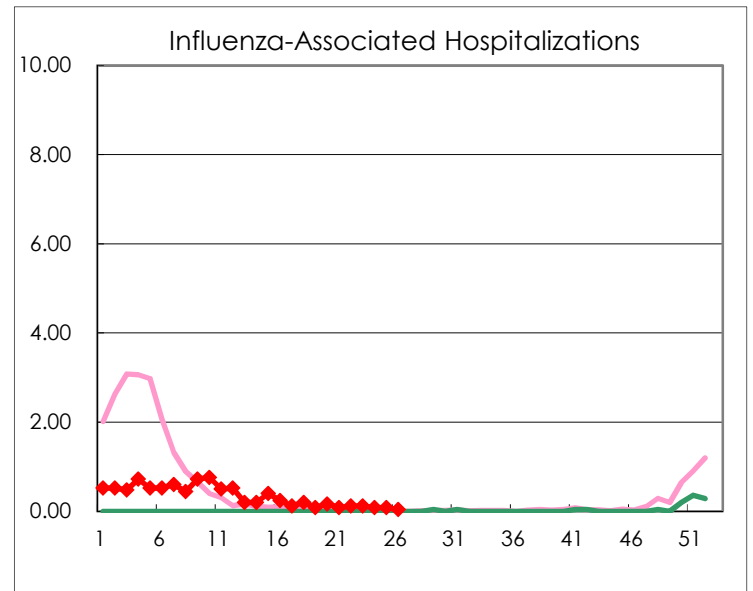
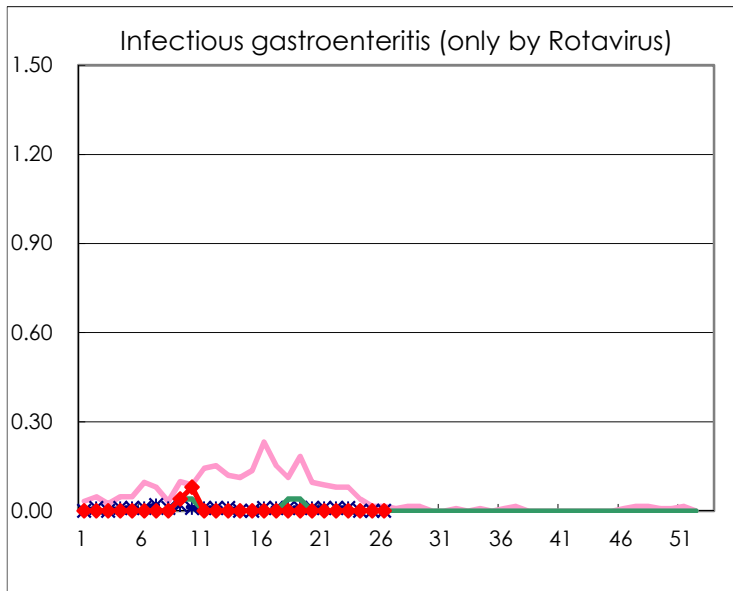
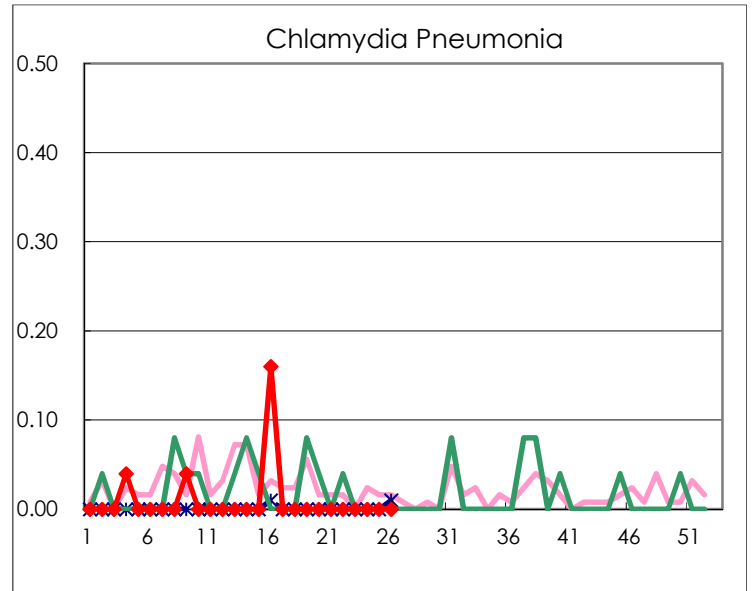
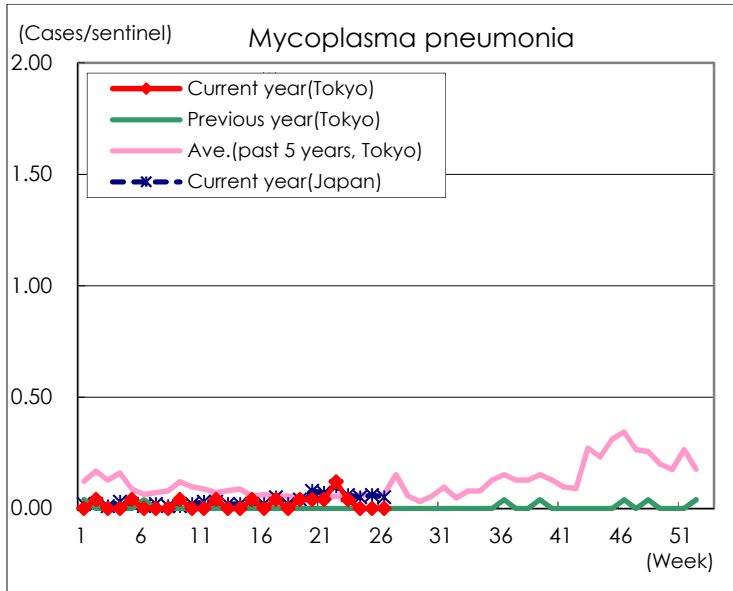
(Blank means 0.)

Disease Trend Graph (weekly reported cases per sentinel in comparison)









Number of sentinel facilities for weekly reporting		
Types of sentinels	Number of sentinels	Sentinels having reported
Pediatric	264	260
Influenza	419	415
Ophthalmic	39	38
Specially-designated	25	25