
INFECTIOUS DISEASES WEEKLY REPORT

TOKYO IDWR

Tokyo Metropolitan Infectious Disease Surveillance Center

20 July 2023 / Number 28
(7/10 ~ 7/16)

Surveillance System in Tokyo, Japan

The infectious diseases which all physicians must report
All physicians must report to health centers the incidence of the diseases which are shown at page one. Health centers electronically report the individual cases to Tokyo Metropolitan Infectious Disease Surveillance Center.

The infectious diseases required to be reported by the sentinels
The numbers of patients who visit the sentinel clinics or hospitals during a week are reported to health centers in Tokyo. And they electronically report the numbers to Tokyo Metropolitan Infectious Disease Surveillance Center. We have about 500 sentinel clinics and hospitals in Tokyo.

Tokyo Metropolitan Institute of Public Health

TEL:81-3-3363-3213 FAX:81-3-5332-7365

e-mail:tmiph@section.metro.tokyo.jp

URL:idsc.tmiph.metro.tokyo.lg.jp/

Number of patients with the diseases which all physicians must report

Category	Diseases	Tokyo					Japan	
		25th	26th	27th	28th	Cum 2023	28th	Cum 2023
I	Ebola hemorrhagic fever							
	Crimean-Congo hemorrhagic fever							
	Smallpox							
	South American hemorrhagic fever							
	Plague							
	Marburg disease							
	Lassa fever							
II	Acute poliomyelitis							
	Tuberculosis	39	34	33	40	1,020	212	7,263
	Diphtheria							
	Severe Acute Respiratory Syndrome(SARS)							
	Middle East Respiratory Syndrome (MERS)							
	Avian influenza H5N1							
	Avian influenza H7N9							
III	Cholera					1		1
	Shigellosis			1		5	3	21
	Enterohemorrhagic Escherichia coli infection	13	11	9	16	159	113	1,361
	Typhoid fever	2				4		22
	Paratyphoid fever					1		6
	Hepatitis E	2	5	2	4	113	14	334
IV	West Nile fever							
	Hepatitis A				1	6	1	30
	Echinococcosis							6
	Mpox	1	2		1	139	2	184
	Yellow fever							
	Psittacosis							6
	Omsk hemorrhagic fever							
	Relapsing fever							10
	Kyasanur forest disease							
	Q fever							
	Rabies							
	Coccidioidomycosis							1
	Zika virus infection							
	Severe Fever with Thrombocytopenia Syndrome						4	88
	Hemorrhagic fever with renal syndrome							
	Western equine encephalitis							
	Tick-borne encephalitis							
	Anthrax							
	Chikungunya fever							2
	Scrub typhus(Tsutsugamushi disease)					4	1	106
	Dengue fever			2	1	15	3	42
	Eastern equine encephalitis							
	Avian influenza (excluding H5N1 and H7N9)							
	Nipah virus infection							
	Japanese spotted fever					1	6	166
	Japanese encephalitis							
	Hantavirus pulmonary syndrome							
	Herpes B virus infection							
	Glanders							
	Brucellosis							1
	Venezuelan equine encephalitis							
	Hendra virus infection							
	Epidemic typhus							
Botulism								
Malaria					4		8	
Tularemia								
Lyme disease					1		7	
Lyssavirus infection(excluding rabies)								
Rift valley fever								
Melioidosis								
Legionellosis	3	3	4	3	77	64	1,105	
Leptospirosis				1	1	3	9	
Rocky mountain spotted fever								

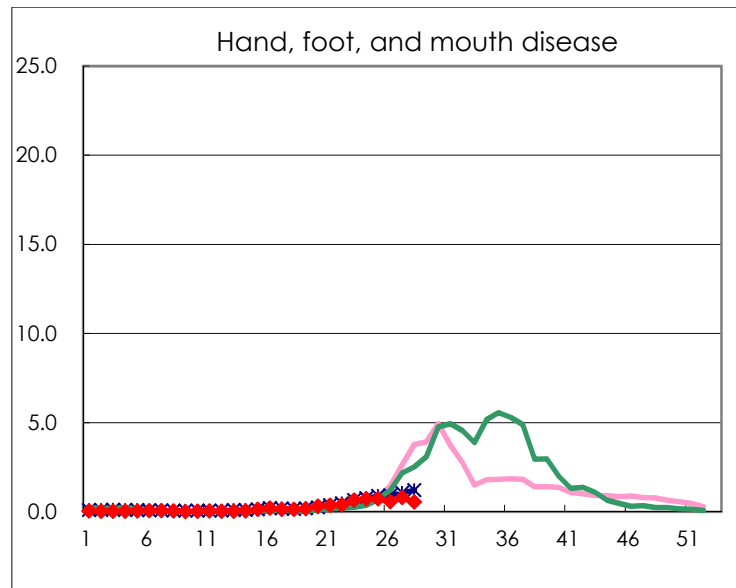
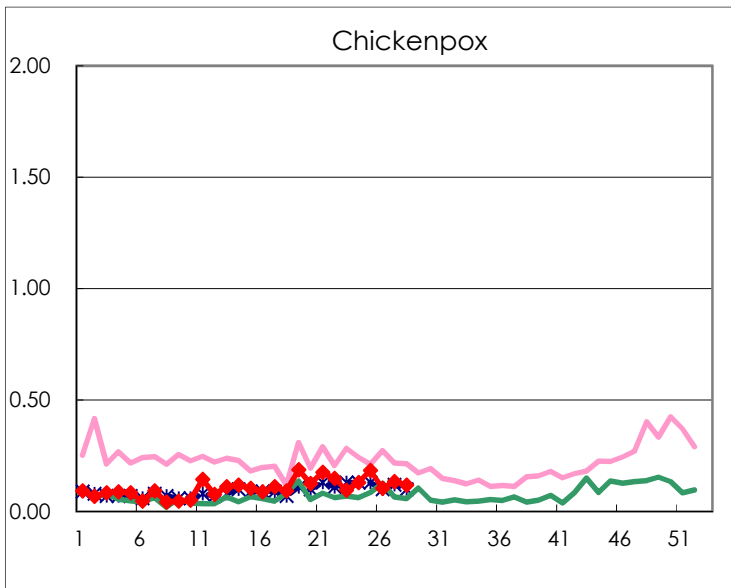
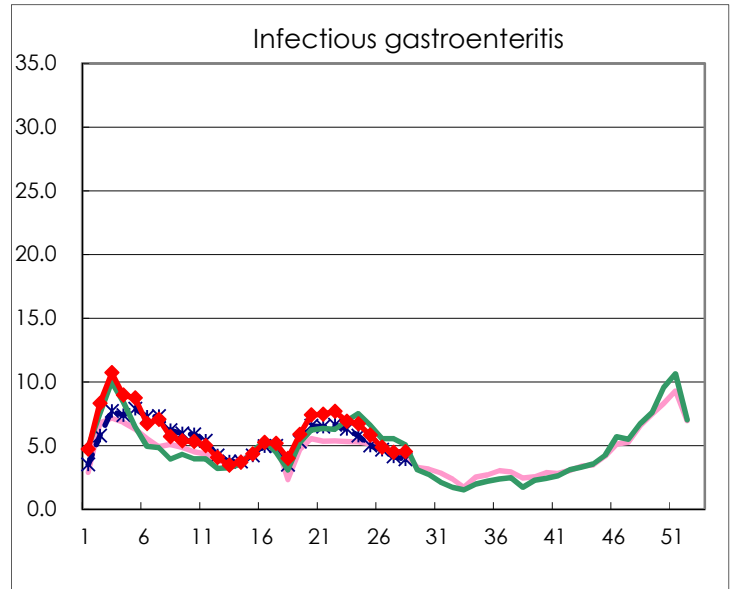
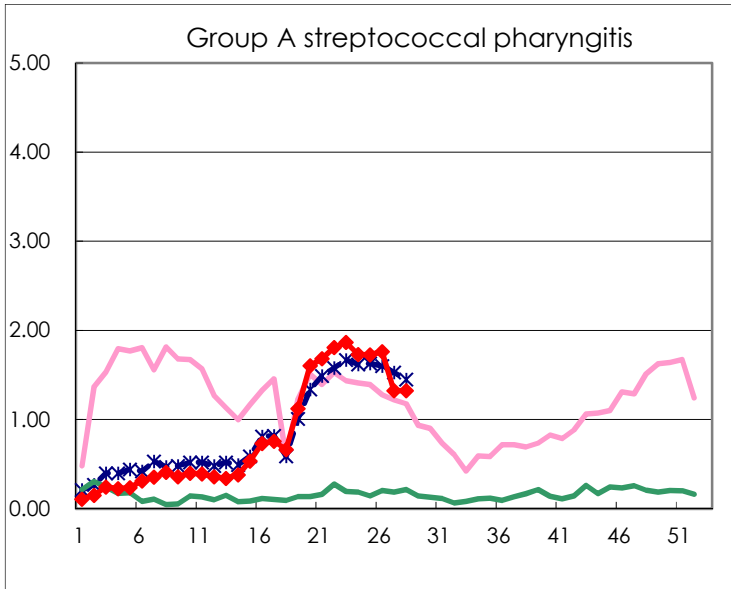
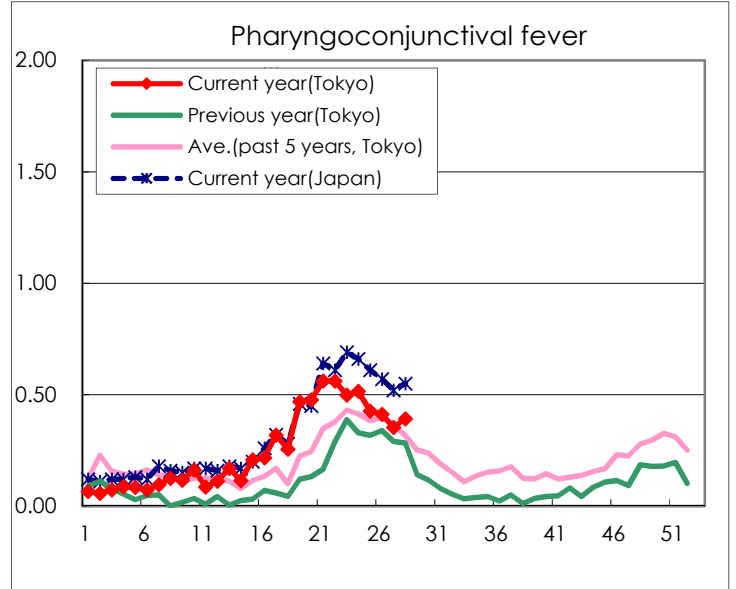
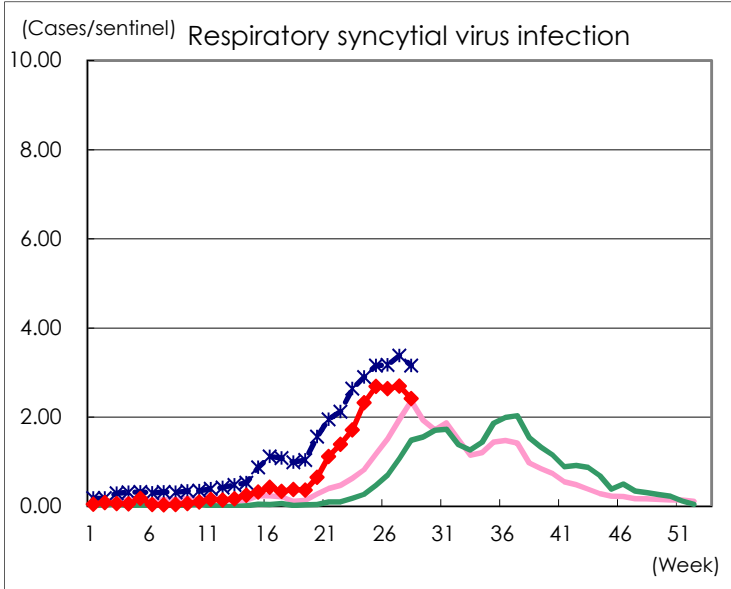
Category	Diseases	Tokyo					Japan	
		25th	26th	27th	28th	Cum 2023	28th	Cum 2023
V	Amebiasis	1	2	3	1	50	3	259
	Viral hepatitis(excluding hepatitis A and E)		2	1	3	33	5	146
	CRE infection	4	4	7	3	107	19	948
	Acute Flaccid Paralysis (excluding Acute poliomyelitis)					5	2	33
	Acute encephalitis(excluding JE and WNE)	1				16	3	267
	Cryptosporidiosis							4
	Creutzfeldt-Jakob disease					9	1	79
	Severe invasive streptococcal infections(TSLS)		1	4	2	64	11	454
	Acquired immunodeficiency syndrome (AIDS)	2	9	5	9	167	14	516
	Giardiasis				1	7	1	26
	Invasive <i>Haemophilus influenzae</i> disease	1		3	2	22	19	284
	Invasive meningococcal disease					1	1	10
	Invasive pneumococcal disease	3	3	4	4	99	12	979
	Varicella (limited to hospitalized case)	1			1	39	9	206
	Congenital rubella syndrome							
	Syphilis	86	79	60	68	2,025	179	8,040
	Disseminated cryptococcosis	1				11	1	97
	Tetanus	1				2	3	51
	Vancomycin-resistant <i>S. aureus</i> infection							
	Vancomycin-resistant <i>Enterococcus</i> infection		3			10	1	75
	Pertussis	7	5		5	68	26	478
Rubella					4		9	
Measles					6		22	
MDRA infection					1		9	

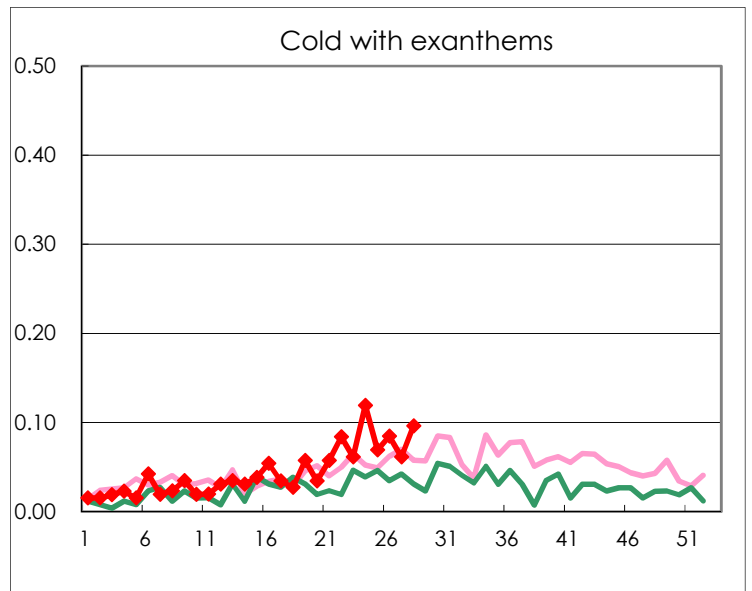
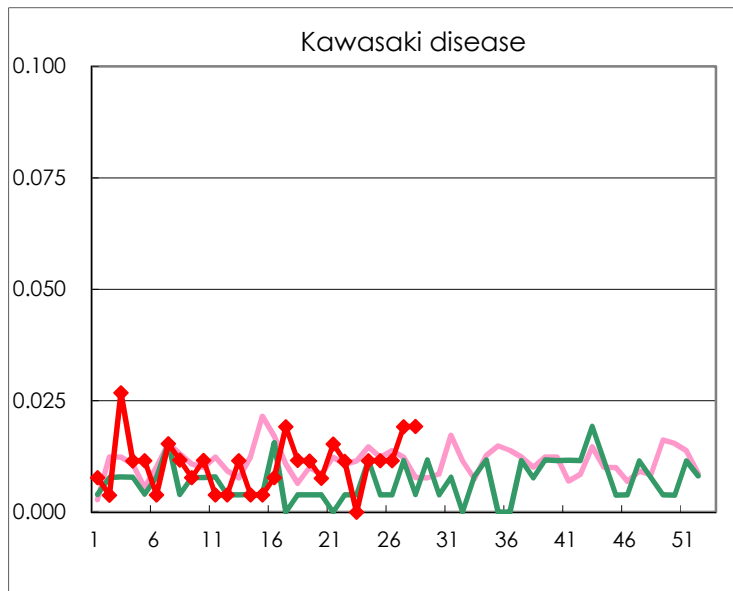
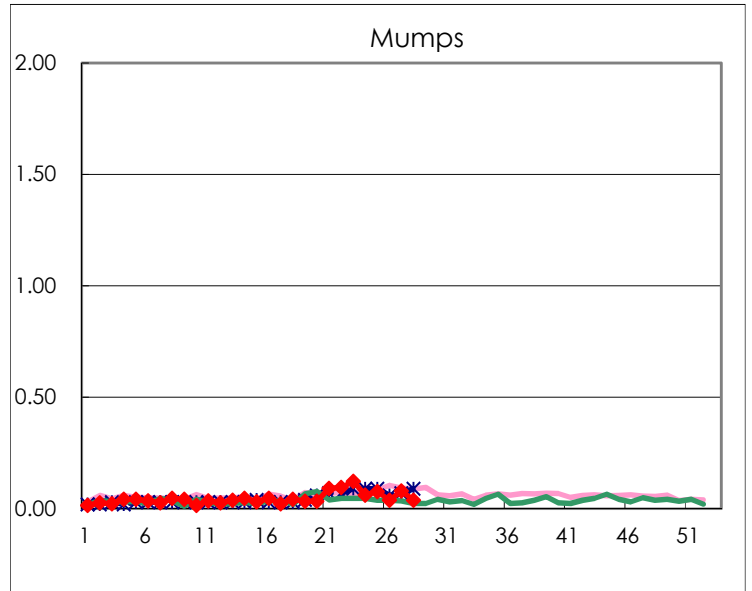
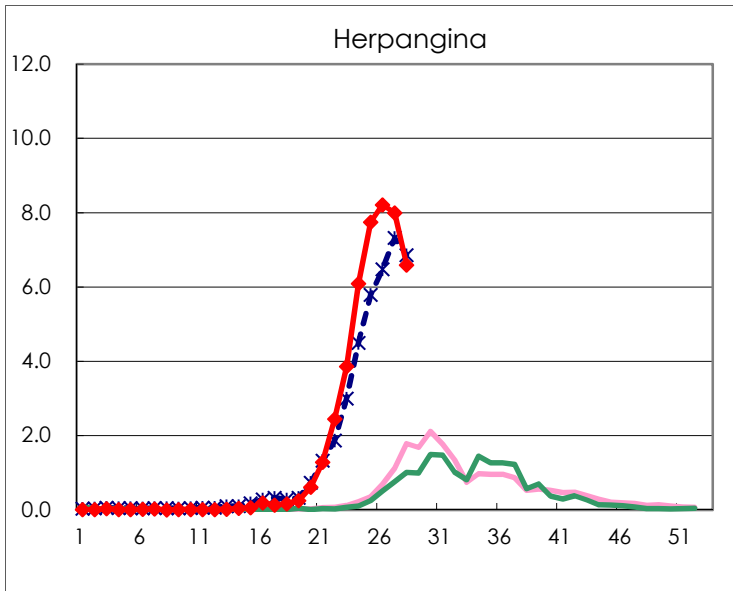
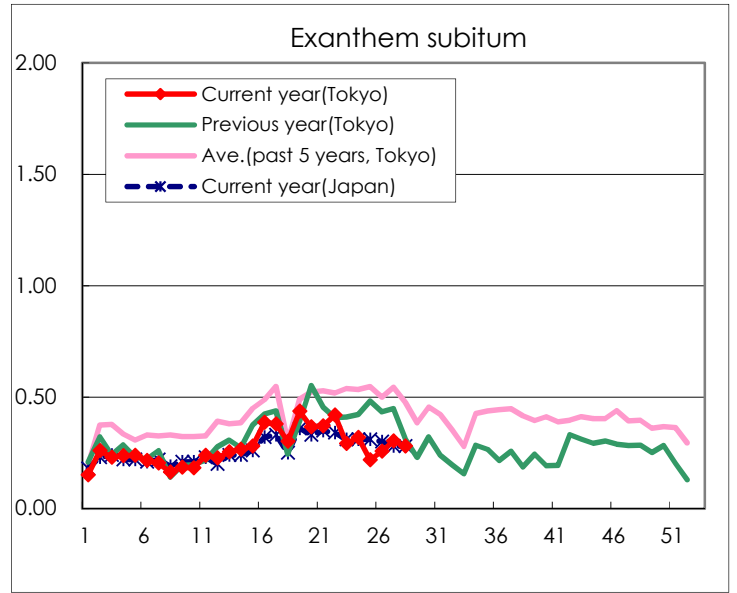
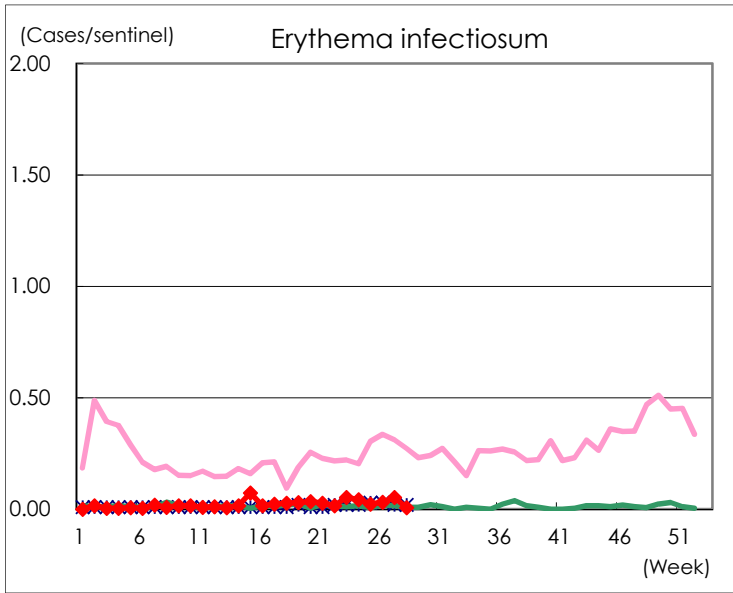
Number of patients with the diseases to be reported
by the designated clinics and hospitals

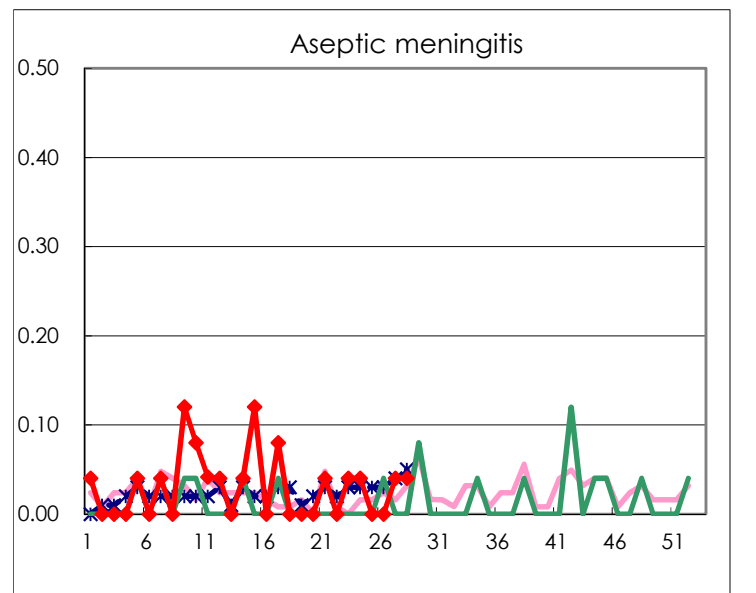
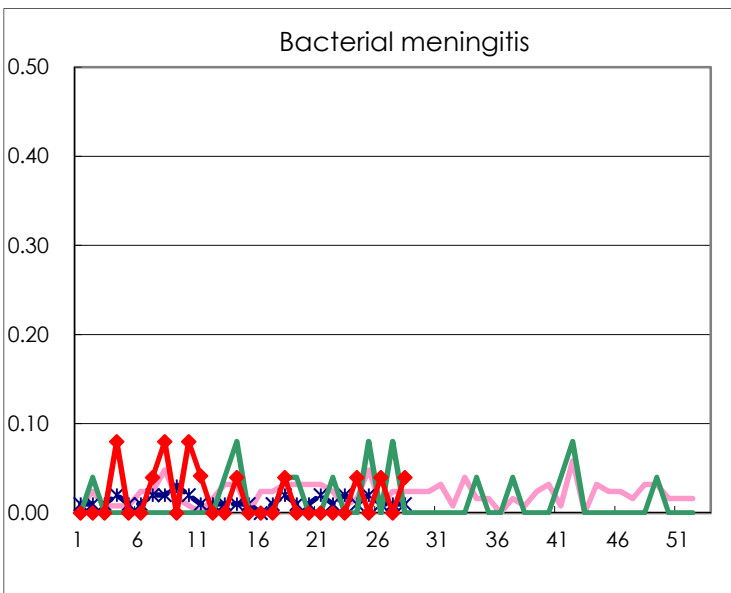
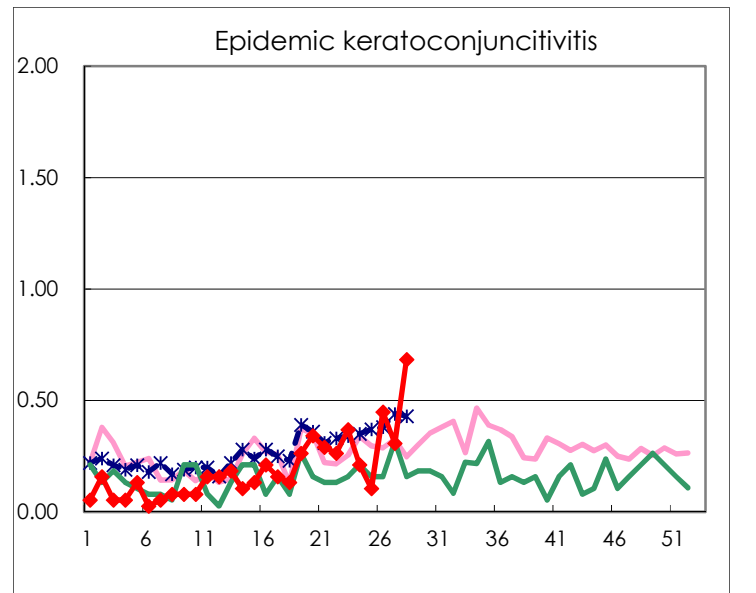
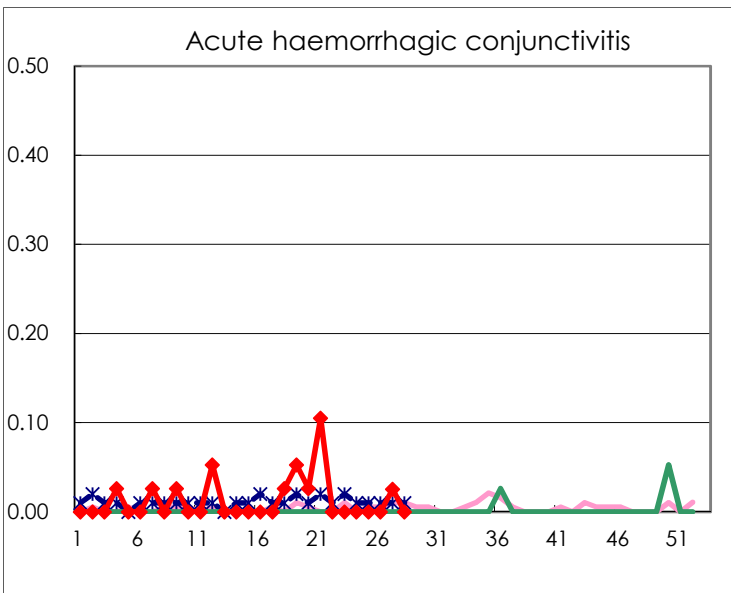
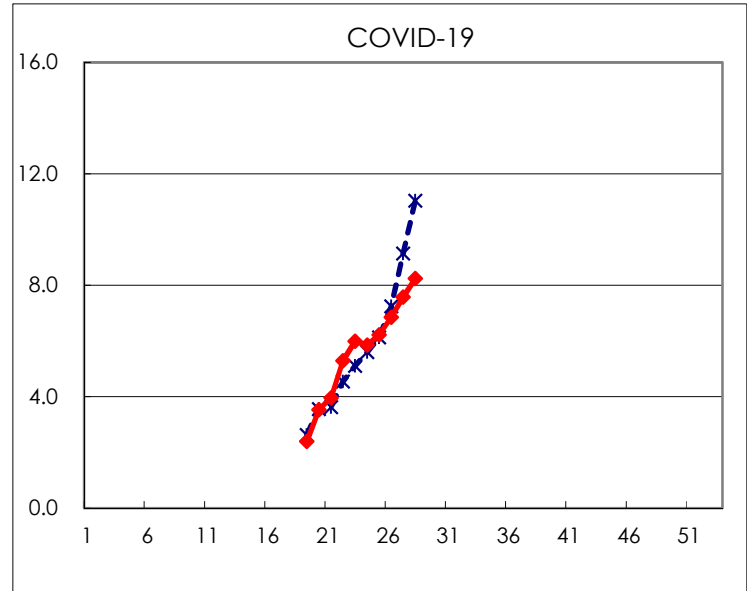
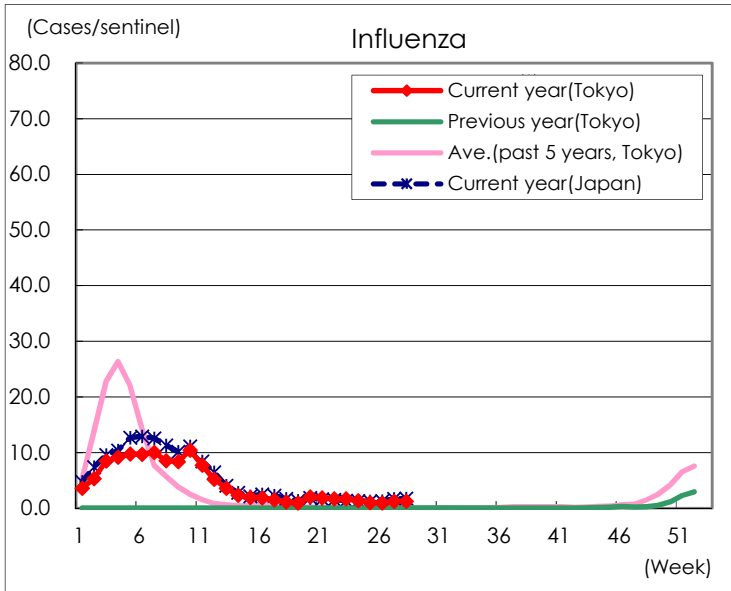
Diseases	Tokyo				
	25th	26th	27th	28th	/sentinel
Respiratory syncytial virus infection	700	686	704	629	2.42
Pharyngoconjunctival fever	111	107	92	102	0.39
Group A streptococcal pharyngitis	449	458	346	344	1.32
Infectious gastroenteritis	1,510	1,262	1,164	1,170	4.50
Chickenpox	48	27	35	31	0.12
Hand, foot, and mouth disease	188	145	207	143	0.55
Erythema infectiosum	6	8	14	2	0.01
Exanthem subitum	57	67	79	73	0.28
Herpangina	2,015	2,136	2,088	1,714	6.59
Mumps	20	10	21	10	0.04
Kawasaki disease	3	3	5	5	0.02
Cold with exanthems	18	22	16	25	0.10
Influenza	412	382	507	514	1.24
COVID-19	2,578	2,843	3,152	3,407	8.25
Acute hemorrhagic conjunctivitis			1		
Epidemic keratoconjunctivitis	4	17	12	26	0.68
Bacterial meningitis		1		1	0.04
Aseptic meningitis			1	1	0.04
Mycoplasma pneumonia			1		
Chlamydial pneumonia (excluding psittacosis)					
Infectious gastroenteritis (only by Rotavirus)					
Influenza-Associated Hospitalizations	2	1	2	2	0.08

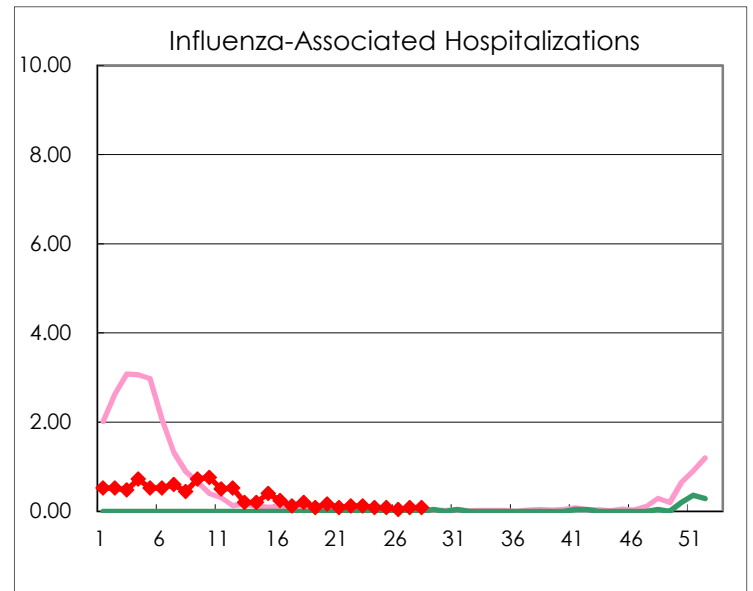
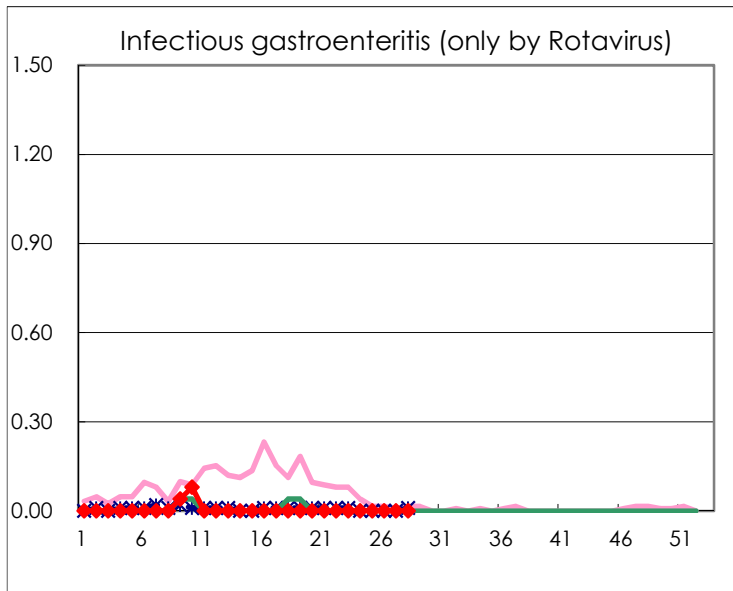
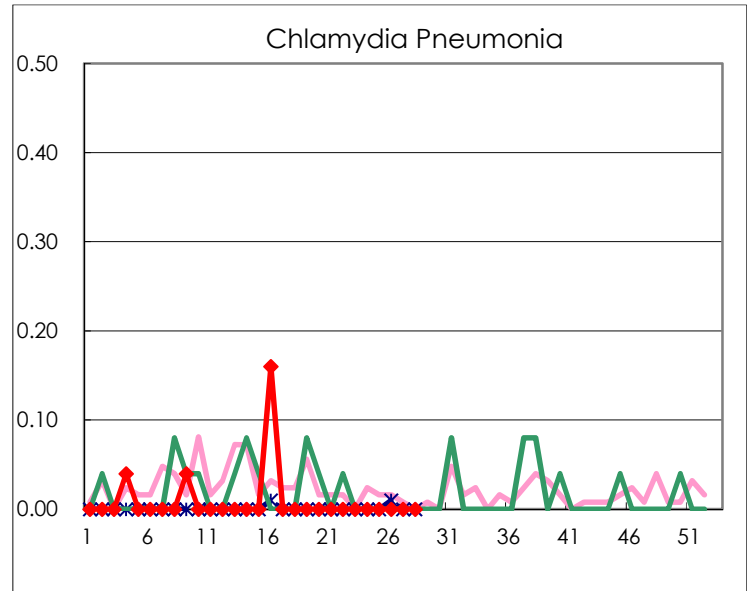
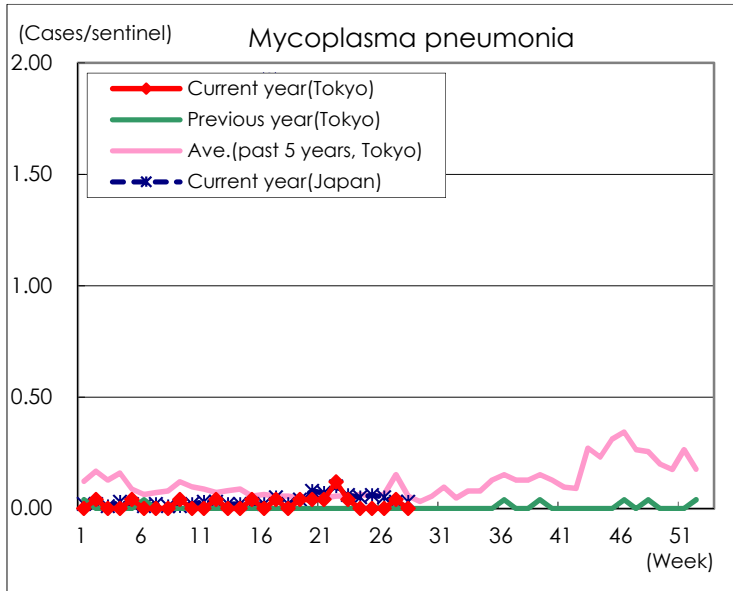
(Blank means 0.)

Disease Trend Graph (weekly reported cases per sentinel in comparison)









Number of sentinel facilities for weekly reporting		
Types of sentinels	Number of sentinels	Sentinels having reported
Pediatric	264	260
Influenza	419	413
Ophthalmic	39	38
Specially-designated	25	25