
INFECTIOUS DISEASES WEEKLY REPORT

TOKYO iDWR

Tokyo Metropolitan Infectious Disease Surveillance Center

17 August 2023 / Number 32
(8/7 ~ 8/13)

Surveillance System in Tokyo, Japan

The infectious diseases which all physicians must report
All physicians must report to health centers the incidence of the diseases which are shown at page one. Health centers electronically report the individual cases to Tokyo Metropolitan Infectious Disease Surveillance Center.

The infectious diseases required to be reported by the sentinels
The numbers of patients who visit the sentinel clinics or hospitals during a week are reported to health centers in Tokyo. And they electronically report the numbers to Tokyo Metropolitan Infectious Disease Surveillance Center. We have about 500 sentinel clinics and hospitals in Tokyo.

Tokyo Metropolitan Institute of Public Health

TEL:81-3-3363-3213 FAX:81-3-5332-7365

e-mail:tmiph@section.metro.tokyo.jp

URL:idsc.tmiph.metro.tokyo.lg.jp/

Number of patients with the diseases which all physicians must report

Category	Diseases	Tokyo					Japan	
		29th	30th	31st	32nd	Cum 2023	32nd	Cum 2023
I	Ebola hemorrhagic fever							
	Crimean-Congo hemorrhagic fever							
	Smallpox							
	South American hemorrhagic fever							
	Plague							
	Marburg disease							
	Lassa fever							
II	Acute poliomyelitis							
	Tuberculosis	38	42	51	44	1,204	204	8,415
	Diphtheria							
	Severe Acute Respiratory Syndrome(SARS)							
	Middle East Respiratory Syndrome (MERS)							
	Avian influenza H5N1							
	Avian influenza H7N9							
III	Cholera					1		1
	Shigellosis					5		23
	Enterohemorrhagic Escherichia coli infection	8	15	20	16	220	71	1,815
	Typhoid fever					4		26
	Paratyphoid fever					1		6
IV	Hepatitis E	2		3	2	121	7	368
	West Nile fever							
	Hepatitis A				1	7	1	34
	Echinococcosis							9
	Mpox				1	141	1	186
	Yellow fever							
	Psittacosis							6
	Omsk hemorrhagic fever							
	Relapsing fever						1	13
	Kyasanur forest disease							
	Q fever							
	Rabies							
	Coccidioidomycosis							1
	Zika virus infection							
	Severe Fever with Thrombocytopenia Syndrome						2	104
	Hemorrhagic fever with renal syndrome							
	Western equine encephalitis							
	Tick-borne encephalitis							
	Anthrax							
	Chikungunya fever							2
	Scrub typhus(Tsutsugamushi disease)		1			5		108
	Dengue fever	1			4	20	4	59
	Eastern equine encephalitis							
	Avian influenza (excluding H5N1 and H7N9)							
	Nipah virus infection							
	Japanese spotted fever					1	13	226
	Japanese encephalitis						1	1
	Hantavirus pulmonary syndrome							
	Herpes B virus infection							
	Glanders							
	Brucellosis							1
	Venezuelan equine encephalitis							
	Hendra virus infection							
Epidemic typhus								
Botulism								
Malaria					4	1	11	
Tularemia								
Lyme disease					1	1	18	
Lyssavirus infection(excluding rabies)								
Rift valley fever								
Melioidosis								
Legionellosis	3	4	2	6	93	26	1,291	
Leptospirosis					1		8	
Rocky mountain spotted fever								

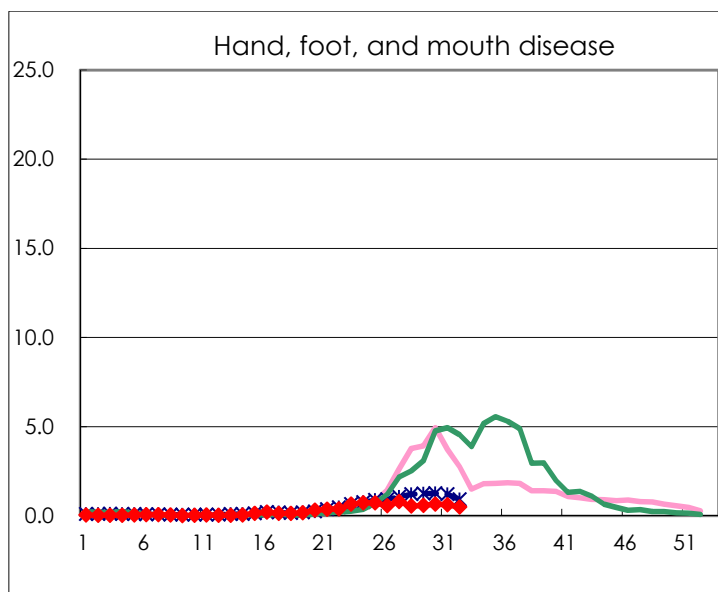
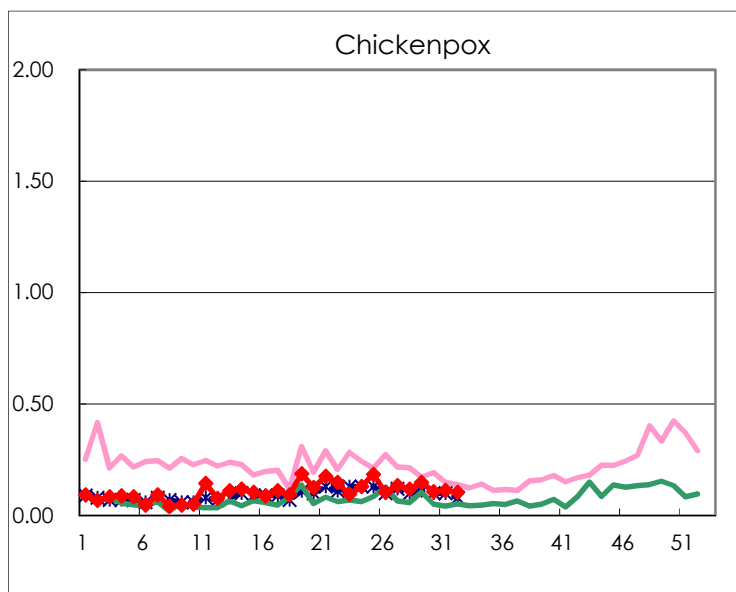
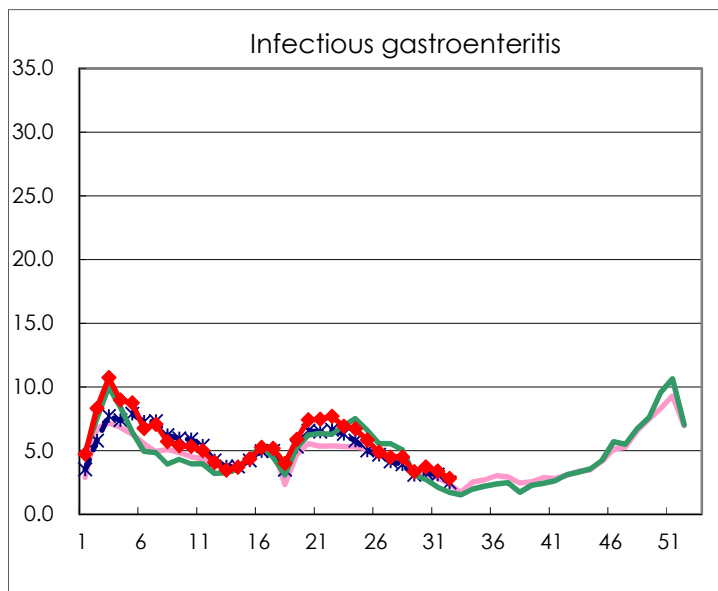
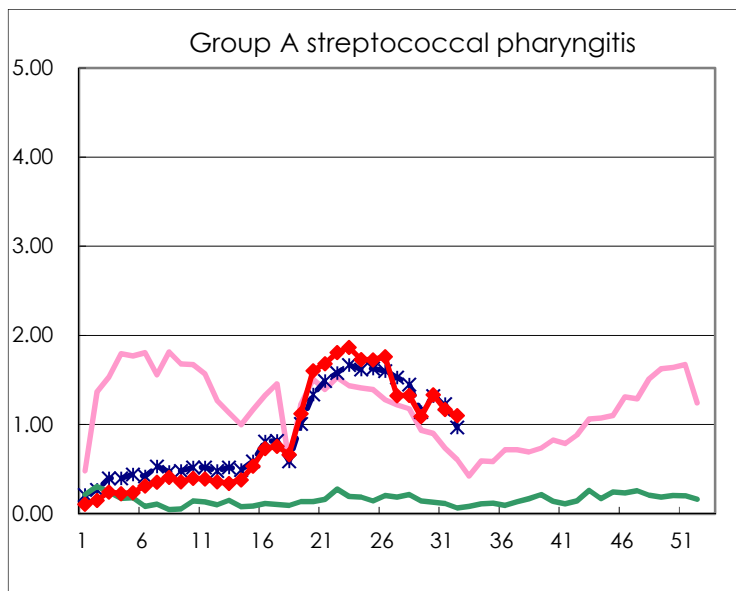
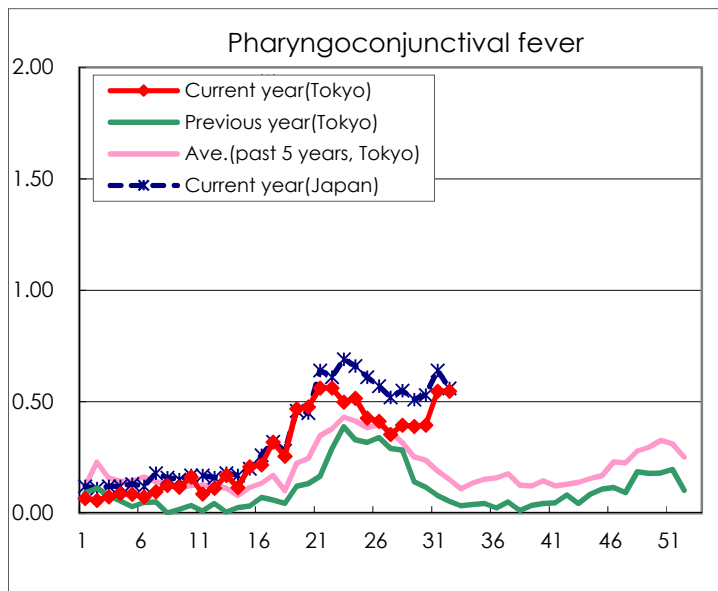
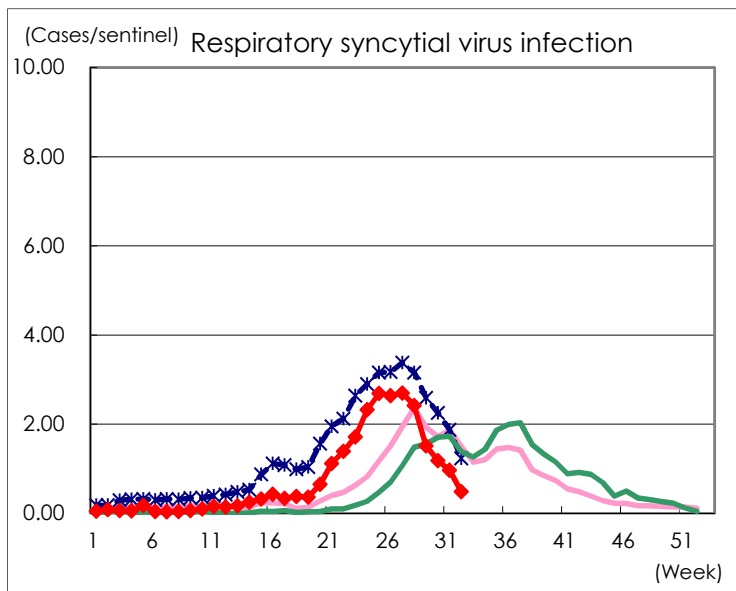
Category	Diseases	Tokyo					Japan	
		29th	30th	31st	32nd	Cum 2023	32nd	Cum 2023
V	Amebiasis	1	5	1	2	59	4	304
	Viral hepatitis(excluding hepatitis A and E)	1		1		35	2	155
	CRE infection	4	5	2	5	125	28	1,109
	Acute Flaccid Paralysis (excluding Acute poliomyelitis)					5	1	37
	Acute encephalitis(excluding JE and WNE)	2			2	20	9	335
	Cryptosporidiosis	1				1		5
	Creutzfeldt-Jakob disease			1	1	11	2	90
	Severe invasive streptococcal infections(TSLS)	4	1	4	1	75	3	511
	Acquired immunodeficiency syndrome (AIDS)	7	10	6	8	198	13	595
	Giardiasis			1		8	2	30
	Invasive <i>Haemophilus influenzae</i> disease	4		1		27	9	339
	Invasive meningococcal disease					1	1	11
	Invasive pneumococcal disease	2	2	6	5	116	18	1,108
	Varicella (limited to hospitalized case)			3	2	44	5	238
	Congenital rubella syndrome							
	Syphilis	58	67	69	67	2,292	158	9,213
	Disseminated cryptococcosis	1				12	1	106
	Tetanus				1	3	2	65
	Vancomycin-resistant <i>S. aureus</i> infection							
	Vancomycin-resistant <i>Enterococcus</i> infection		1			6	1	79
	Pertussis	7	5	2	2	82	12	568
Rubella					4		11	
Measles					6		22	
MDRA infection					1		11	

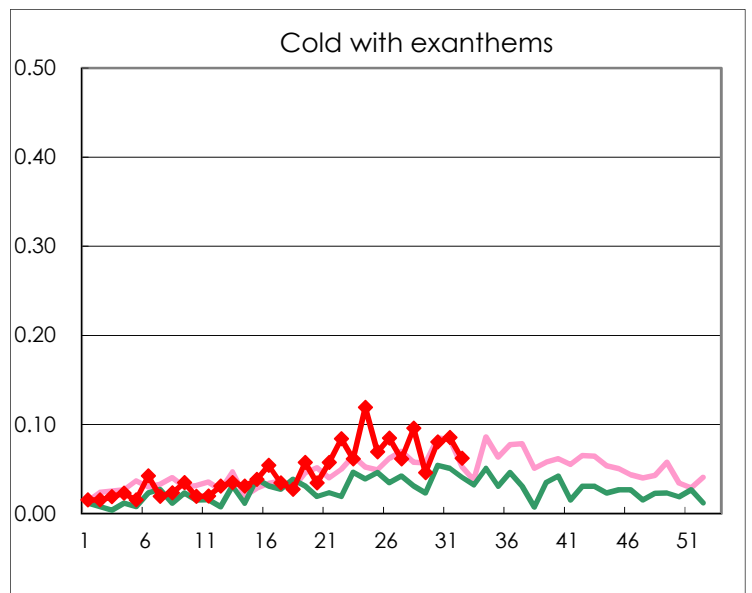
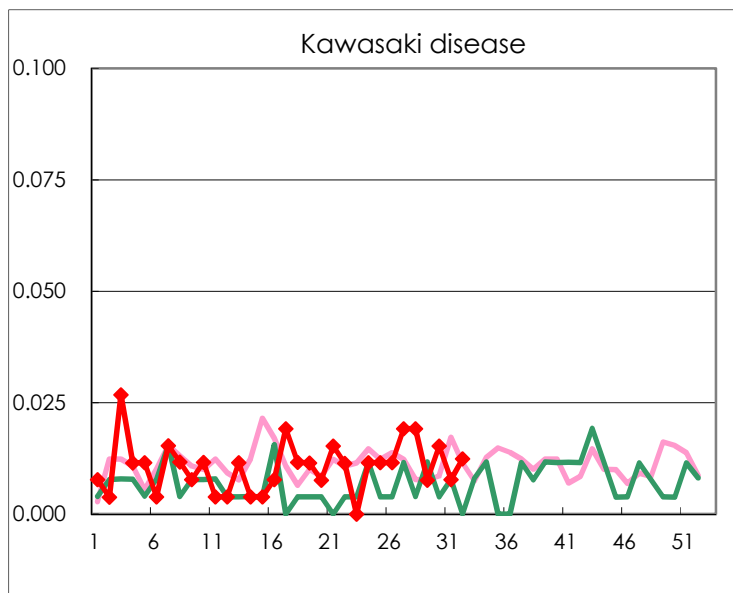
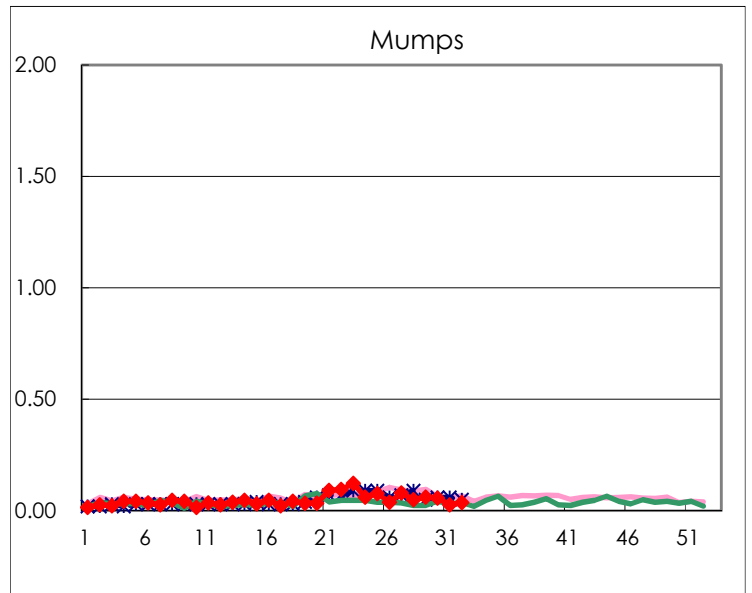
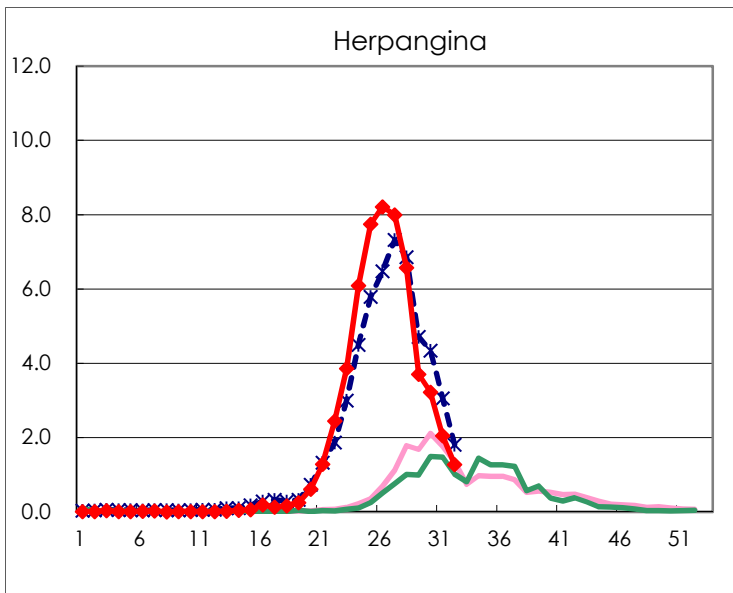
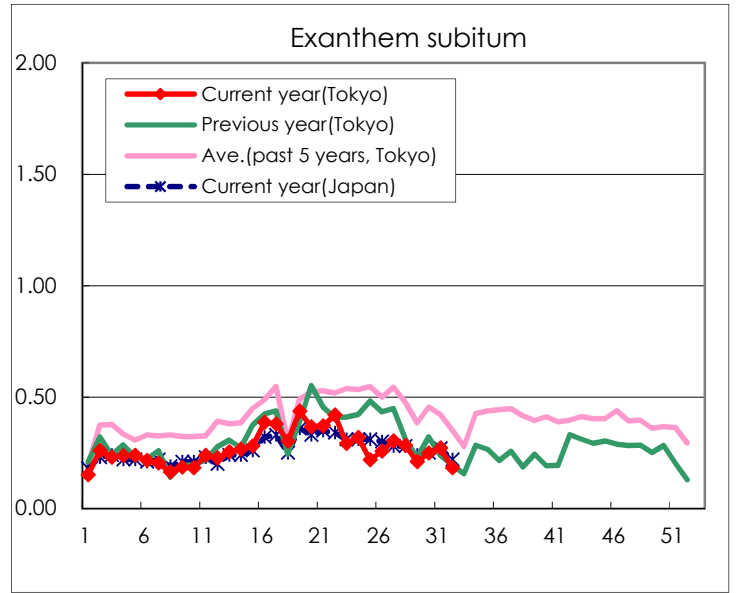
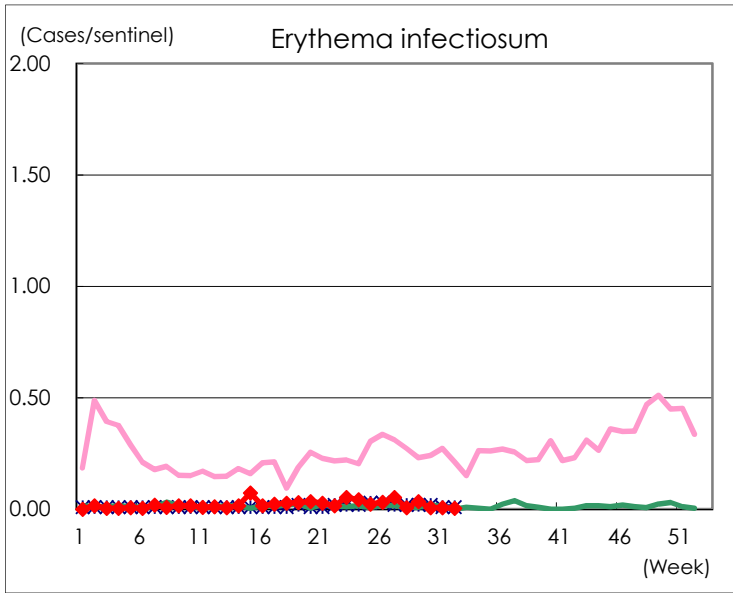
Number of patients with the diseases to be reported
by the designated clinics and hospitals

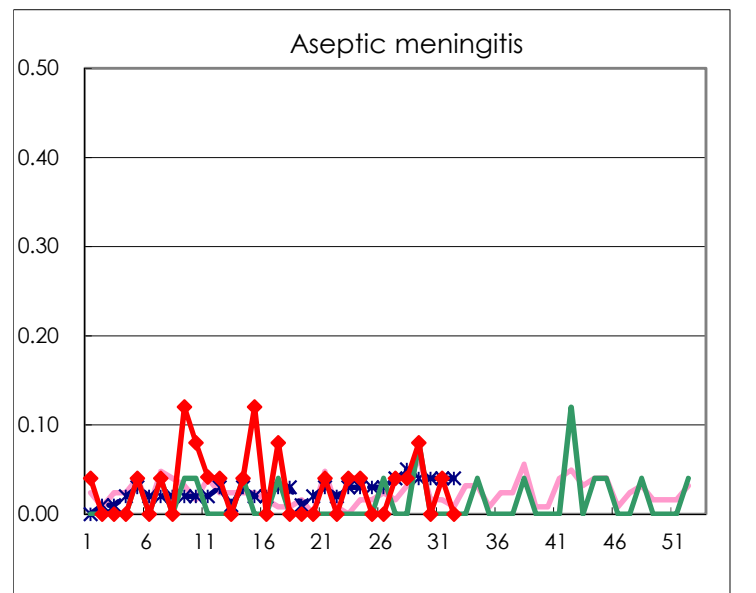
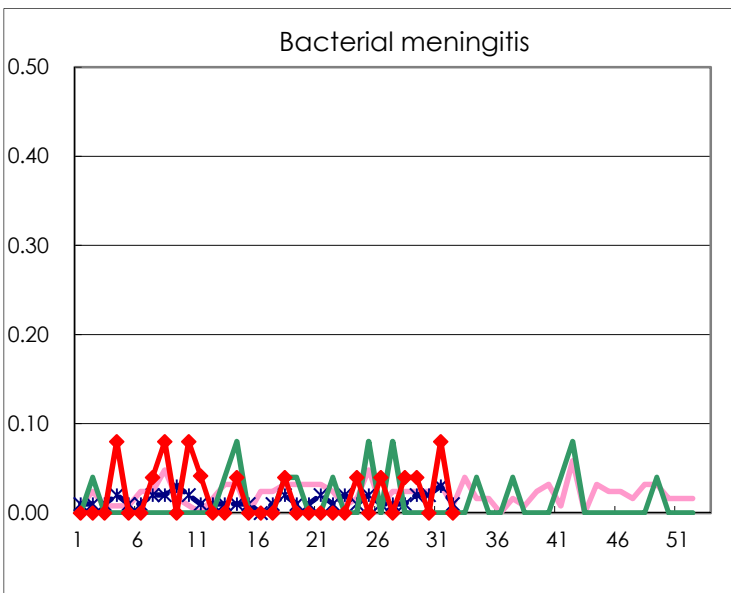
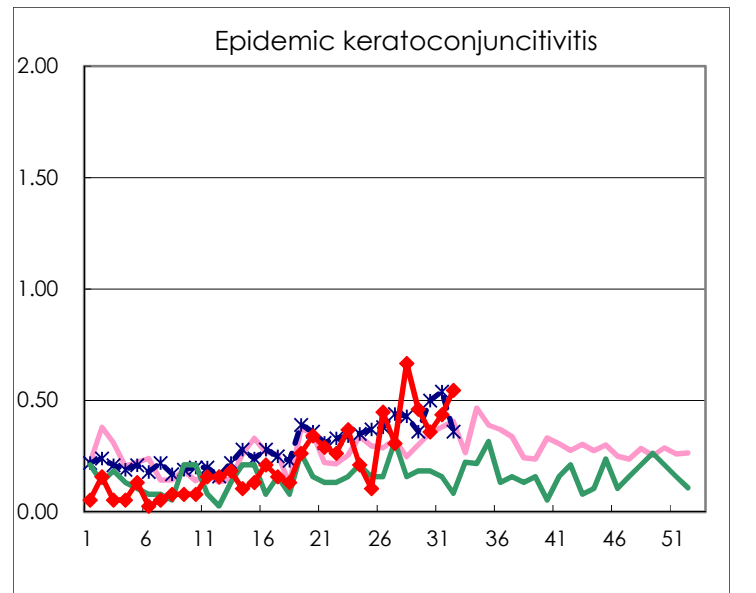
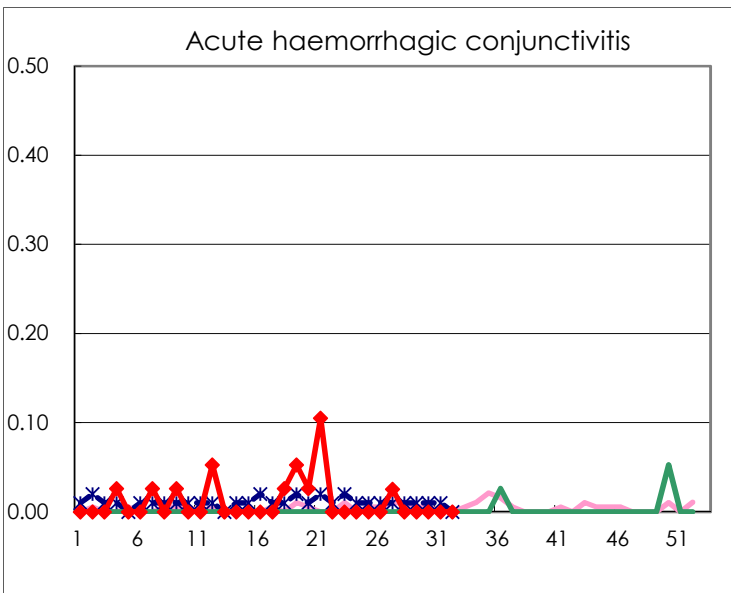
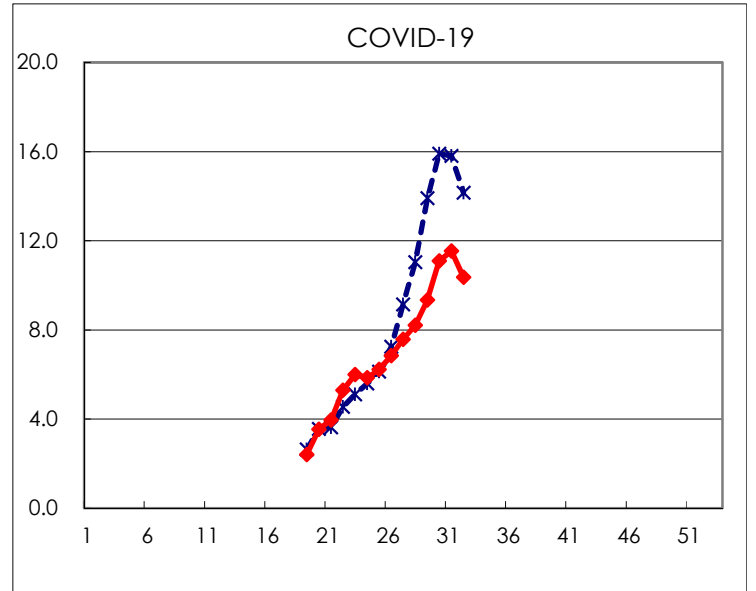
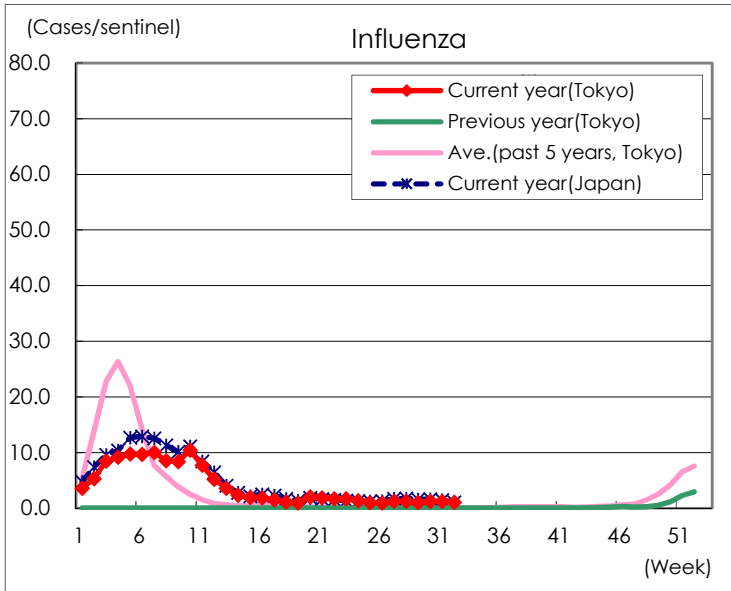
Diseases	Tokyo				
	29th	30th	31st	32nd	/sentinel
Respiratory syncytial virus infection	397	308	250	117	0.49
Pharyngoconjunctival fever	102	103	141	132	0.55
Group A streptococcal pharyngitis	286	349	302	266	1.10
Infectious gastroenteritis	872	966	874	675	2.80
Chickenpox	39	28	29	25	0.10
Hand, foot, and mouth disease	151	170	160	119	0.49
Erythema infectiosum	9	2	2	1	0.00
Exanthem subitum	55	65	70	44	0.18
Herpangina	971	840	528	308	1.28
Mumps	16	15	7	9	0.04
Kawasaki disease	2	4	2	3	0.01
Cold with exanthems	12	21	22	15	0.06
Influenza	413	500	513	395	1.04
COVID-19	3,898	4,615	4,767	3,939	10.37
Acute hemorrhagic conjunctivitis					
Epidemic keratoconjunctivitis	18	14	17	18	0.55
Bacterial meningitis	1		2		
Aseptic meningitis	2		1		
Mycoplasma pneumonia	1		1		
Chlamydial pneumonia (excluding psittacosis)					
Infectious gastroenteritis (only by Rotavirus)					
Influenza-Associated Hospitalizations	4	4	1	4	0.16

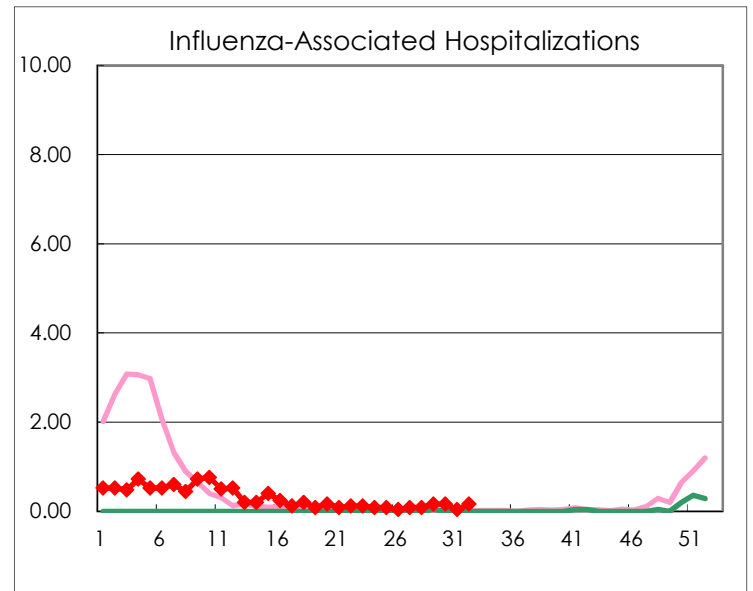
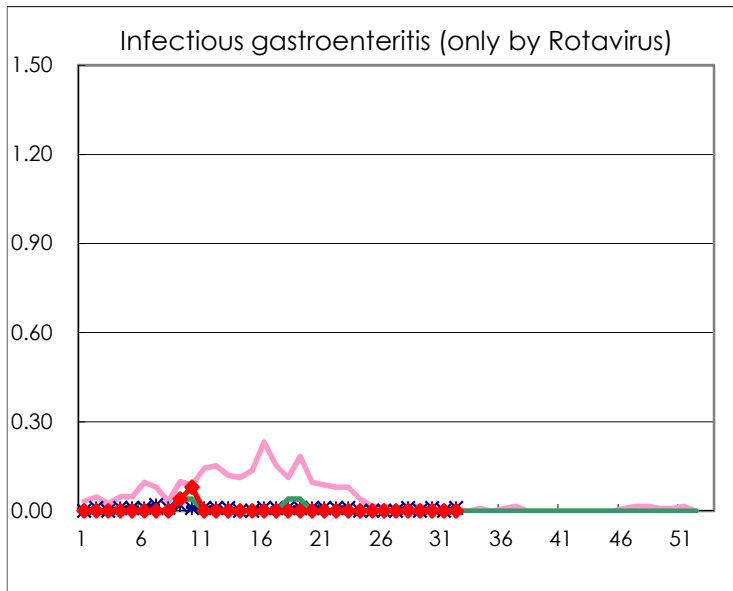
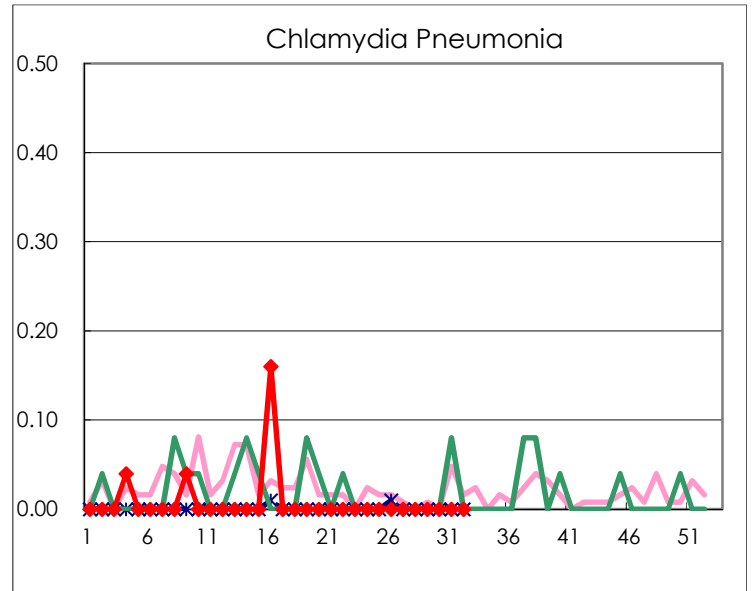
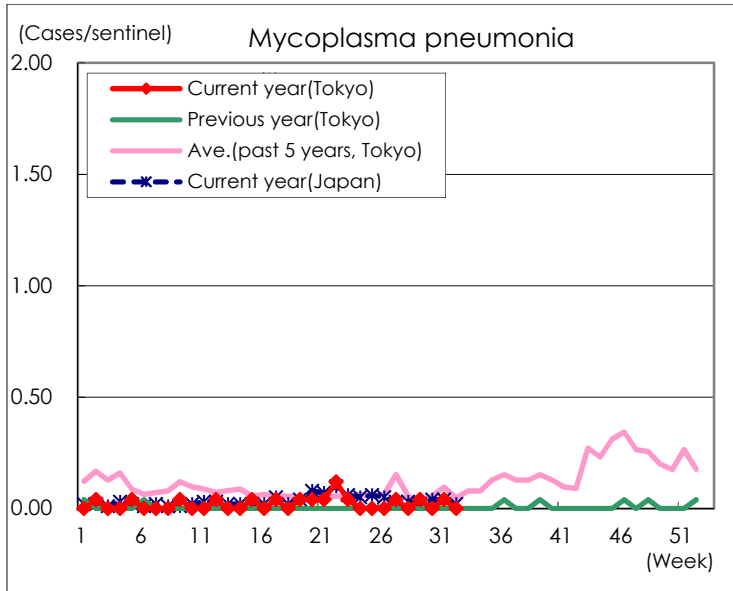
(Blank means 0.)

Disease Trend Graph (weekly reported cases per sentinel in comparison)









Number of sentinel facilities for weekly reporting		
Types of sentinels	Number of sentinels	Sentinels having reported
Pediatric	264	241
Influenza COVID-19	419	380
Ophthalmic	39	33
Specially-designated	25	25