
INFECTIOUS DISEASES WEEKLY REPORT

TOKYO IDWR

Tokyo Metropolitan Infectious Disease Surveillance Center

31 August 2023 / Number 34
(8/21 ~ 8/27)

Surveillance System in Tokyo, Japan

The infectious diseases which all physicians must report
All physicians must report to health centers the incidence of the diseases which are shown at page one. Health centers electronically report the individual cases to Tokyo Metropolitan Infectious Disease Surveillance Center.

The infectious diseases required to be reported by the sentinels
The numbers of patients who visit the sentinel clinics or hospitals during a week are reported to health centers in Tokyo. And they electronically report the numbers to Tokyo Metropolitan Infectious Disease Surveillance Center. We have about 500 sentinel clinics and hospitals in Tokyo.

Tokyo Metropolitan Institute of Public Health

TEL:81-3-3363-3213 FAX:81-3-5332-7365

e-mail:tmiph@section.metro.tokyo.jp

URL:idsc.tmiph.metro.tokyo.lg.jp/

Number of patients with the diseases which all physicians must report

Category	Diseases	Tokyo					Japan	
		31st	32nd	33rd	34th	Cum 2023	34th	Cum 2023
I	Ebola hemorrhagic fever							
	Crimean-Congo hemorrhagic fever							
	Smallpox							
	South American hemorrhagic fever							
	Plague							
	Marburg disease							
	Lassa fever							
II	Acute poliomyelitis							
	Tuberculosis	53	46	39	45	1,290	260	9,080
	Diphtheria							
	Severe Acute Respiratory Syndrome(SARS)							
	Middle East Respiratory Syndrome (MERS)							
	Avian influenza H5N1							
	Avian influenza H7N9							
III	Cholera					1		1
	Shigellosis					5	1	25
	Enterohemorrhagic Escherichia coli infection	20	16	21	19	260	213	2,176
	Typhoid fever					4		27
	Paratyphoid fever					1		6
IV	Hepatitis E	3	2	1	1	123	4	379
	West Nile fever							
	Hepatitis A					6		33
	Echinococcosis						1	10
	Mpox		1			141		187
	Yellow fever							
	Psittacosis							7
	Omsk hemorrhagic fever							
	Relapsing fever							15
	Kyasanur forest disease							
	Q fever							
	Rabies							
	Coccidioidomycosis							1
	Zika virus infection							
	Severe Fever with Thrombocytopenia Syndrome							108
	Hemorrhagic fever with renal syndrome							
	Western equine encephalitis							
	Tick-borne encephalitis							
	Anthrax							
	Chikungunya fever							2
	Scrub typhus(Tsutsugamushi disease)					5	1	111
	Dengue fever		4	1	2	23	9	75
	Eastern equine encephalitis							
	Avian influenza (excluding H5N1 and H7N9)							
	Nipah virus infection							
	Japanese spotted fever					1	16	258
	Japanese encephalitis							
	Hantavirus pulmonary syndrome							
	Herpes B virus infection							
	Glanders							
	Brucellosis							1
	Venezuelan equine encephalitis							
	Hendra virus infection							
Epidemic typhus								
Botulism								
Malaria					4		12	
Tularemia								
Lyme disease					1		18	
Lyssavirus infection(excluding rabies)								
Rift valley fever								
Melioidosis								
Legionellosis	2	8	2	4	101	36	1,377	
Leptospirosis					1	3	13	
Rocky mountain spotted fever								

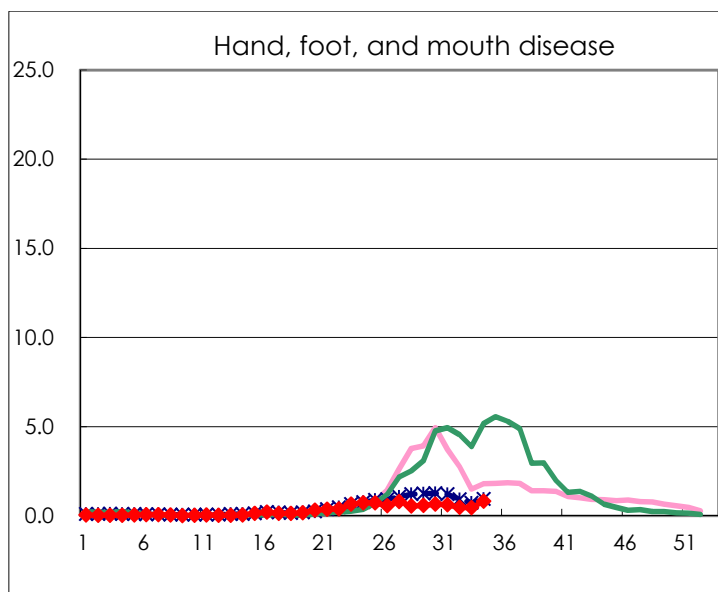
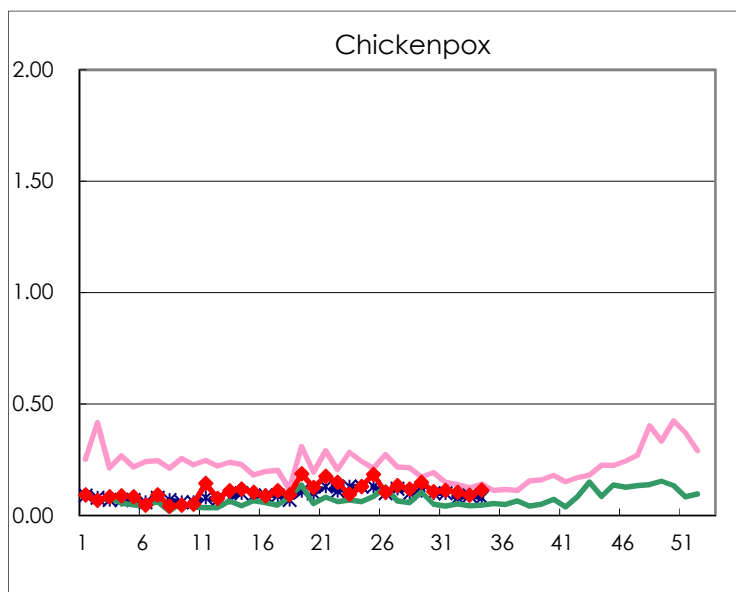
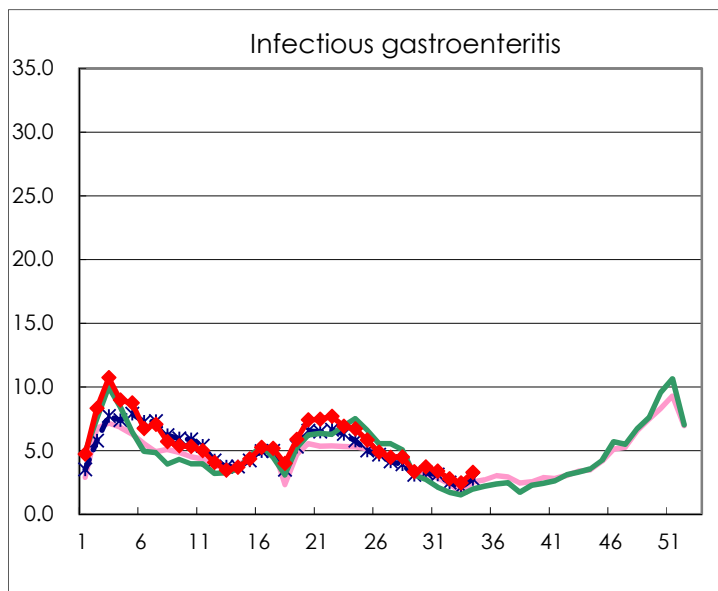
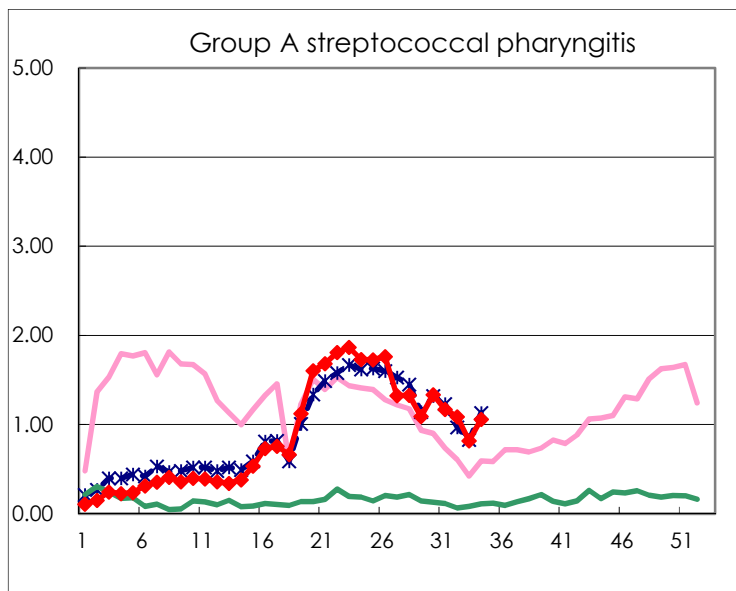
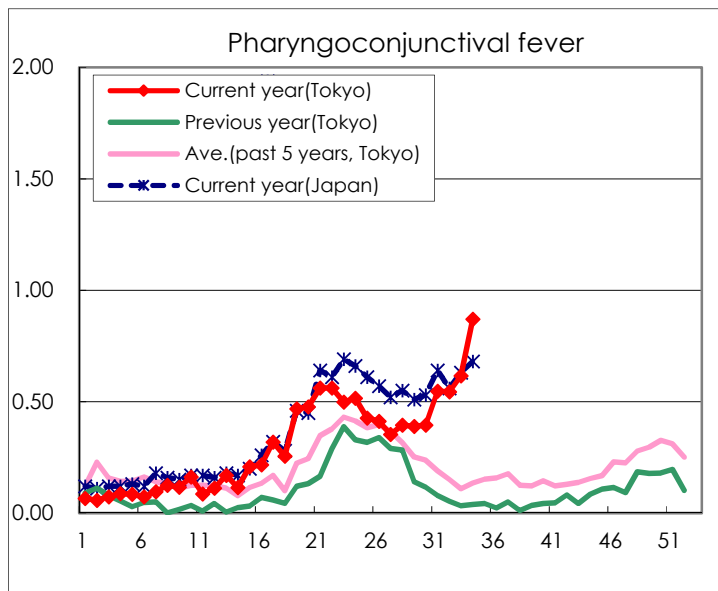
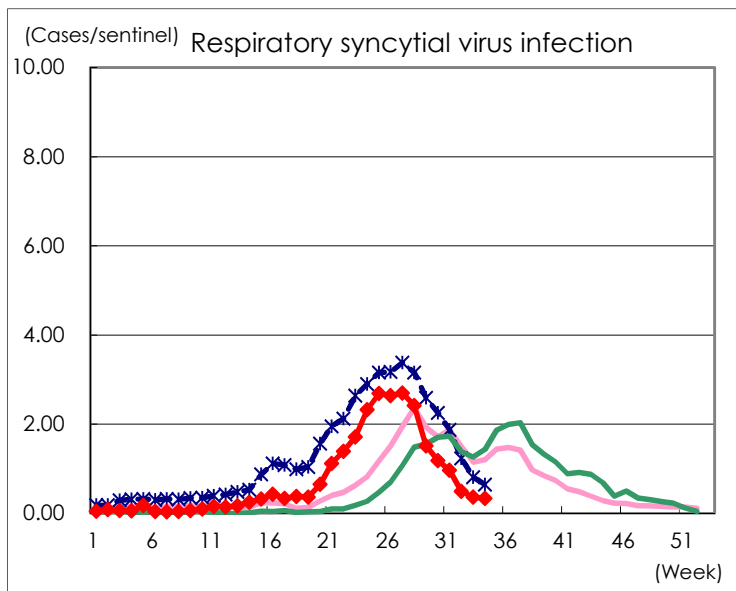
Category	Diseases	Tokyo					Japan	
		31st	32nd	33rd	34th	Cum 2023	34th	Cum 2023
V	Amebiasis	1	2	1	5	65	10	333
	Viral hepatitis(excluding hepatitis A and E)	1		1	1	37	4	166
	CRE infection	3	5	6	4	136	40	1,219
	Acute Flaccid Paralysis (excluding Acute poliomyelitis)					5	1	40
	Acute encephalitis(excluding JE and WNE)		2	1	1	22	8	353
	Cryptosporidiosis					1	1	7
	Creutzfeldt-Jakob disease	1	1	3		14	2	99
	Severe invasive streptococcal infections(TSLS)	5	1	2		78	10	549
	Acquired immunodeficiency syndrome (AIDS)	6	8	4	5	207	8	620
	Giardiasis	1			1	9	1	32
	Invasive <i>Haemophilus influenzae</i> disease	1		2	2	31	5	364
	Invasive meningococcal disease					1		11
	Invasive pneumococcal disease	7	6	3	6	127	16	1,170
	Varicella (limited to hospitalized case)	3	3	1	1	47	2	248
	Congenital rubella syndrome							
	Syphilis	71	71	73	78	2,450	223	9,798
	Disseminated cryptococcosis					12		111
	Tetanus		1	1		4	3	71
	Vancomycin-resistant <i>S. aureus</i> infection							
	Vancomycin-resistant <i>Enterococcus</i> infection					6	1	81
	Pertussis	2	2	1	5	88	18	617
Rubella					4		10	
Measles					6	1	23	
MDRA infection					1		11	

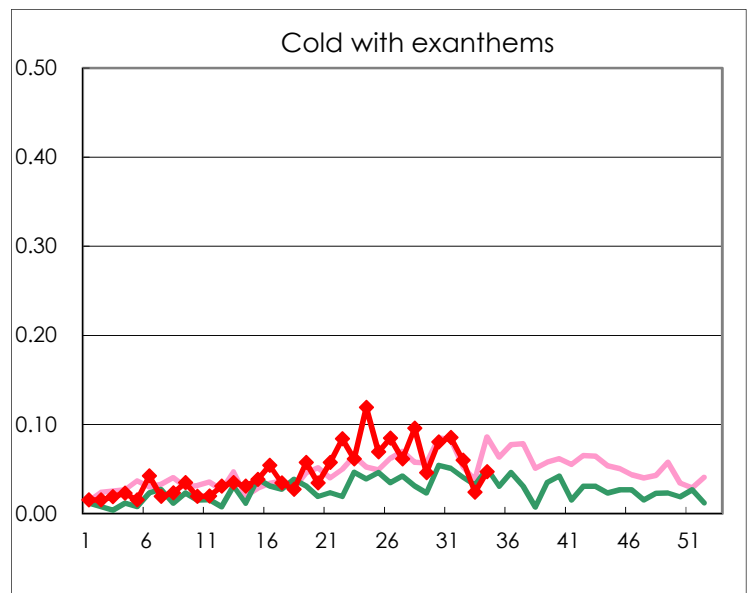
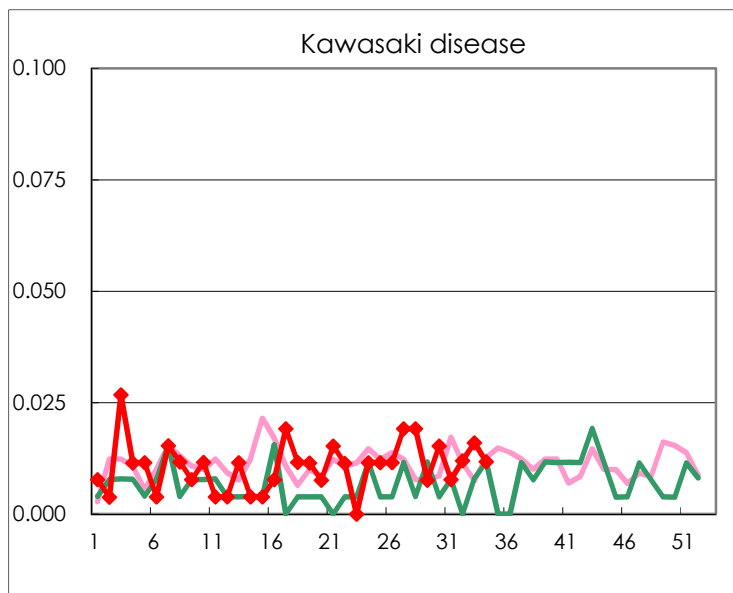
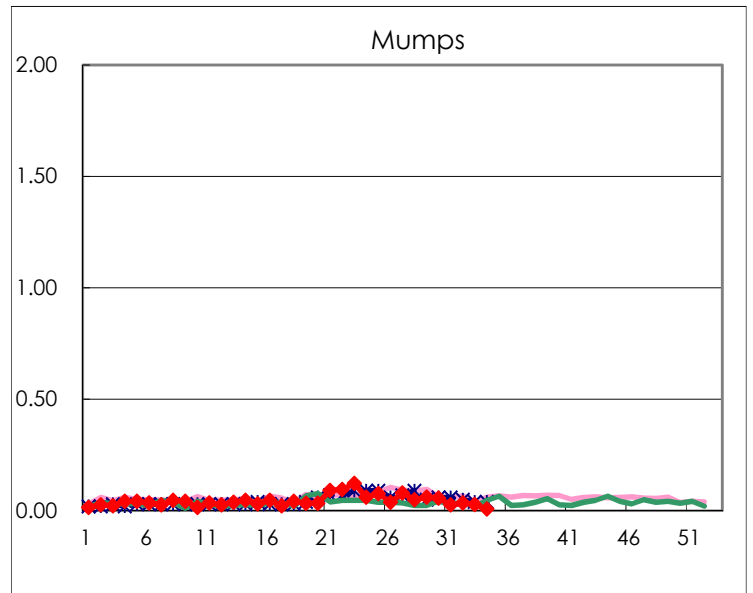
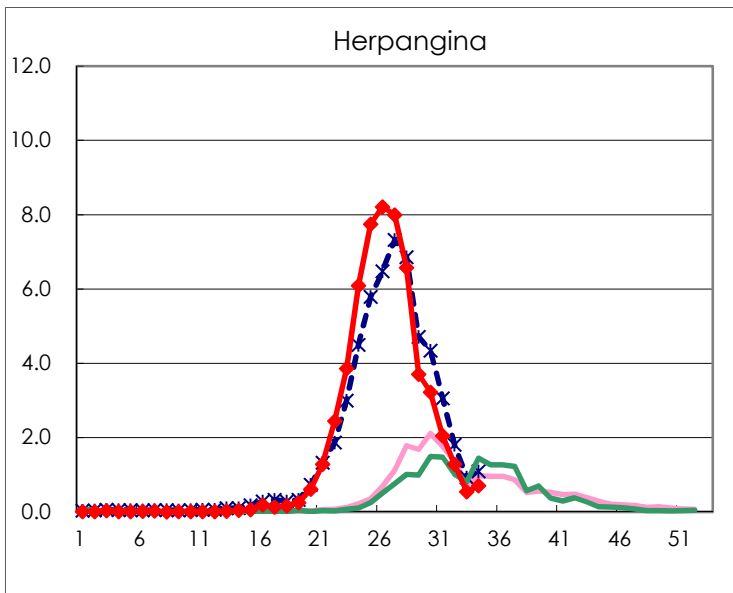
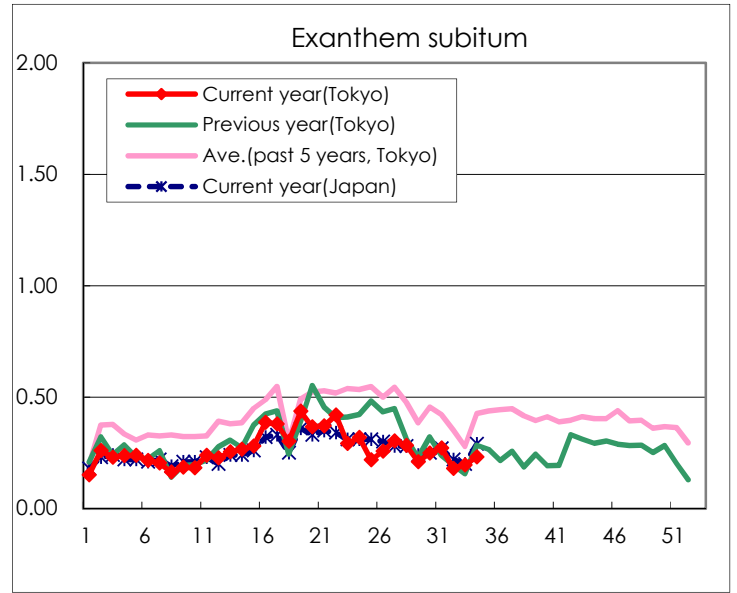
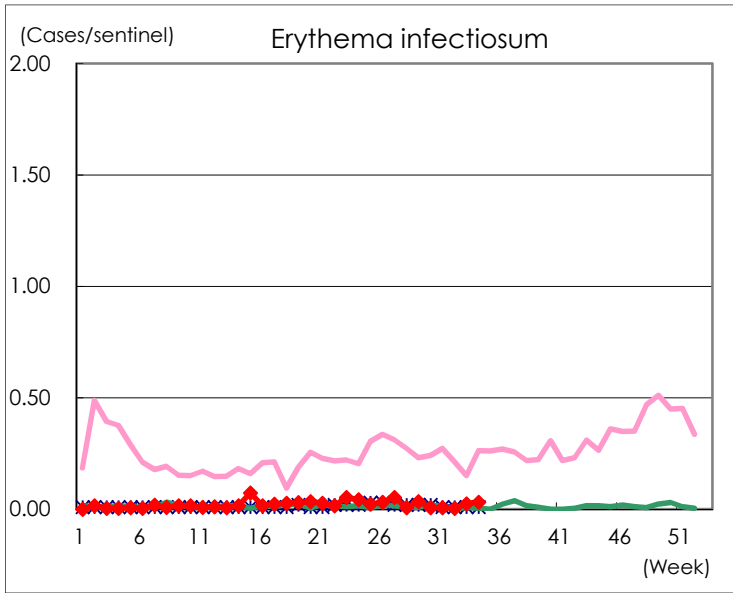
Number of patients with the diseases to be reported
by the designated clinics and hospitals

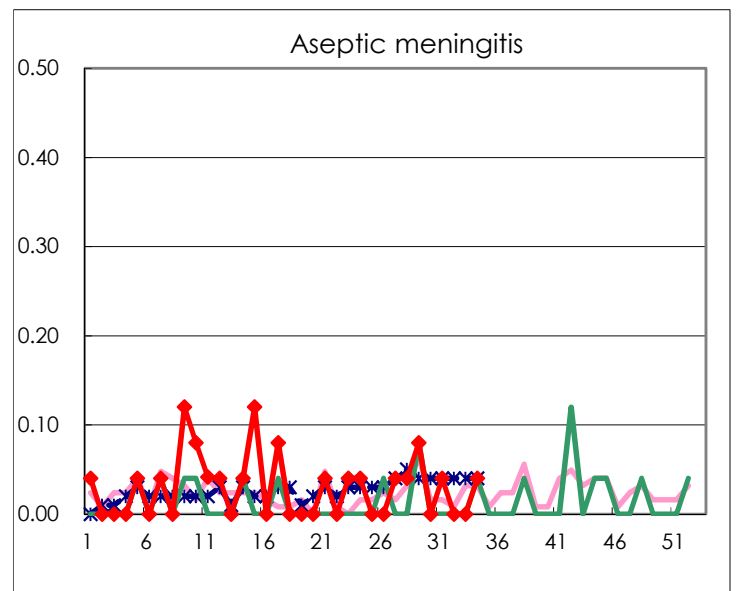
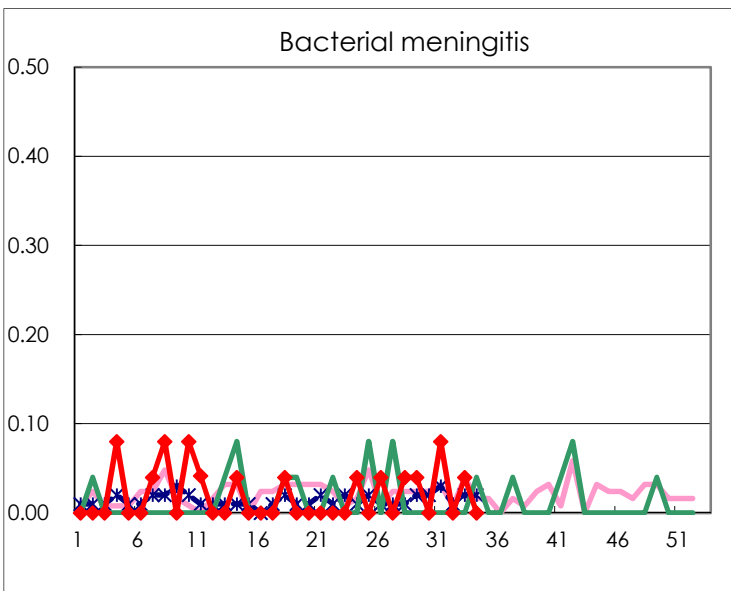
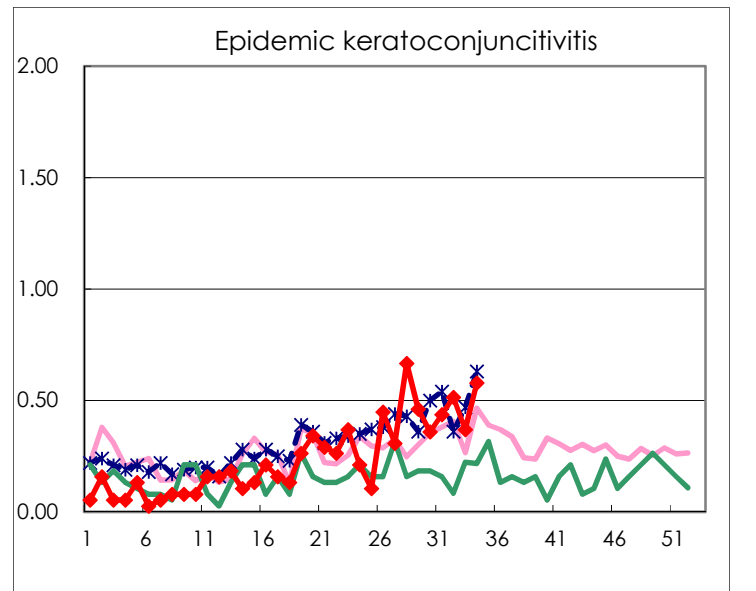
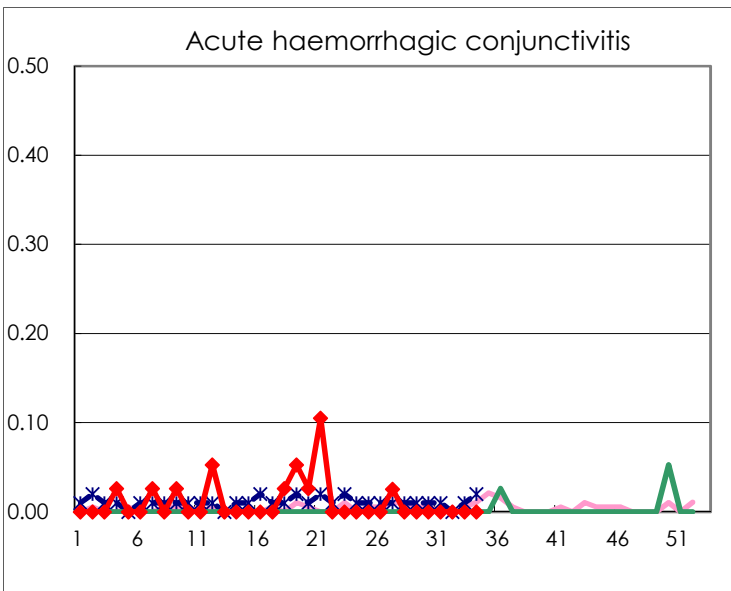
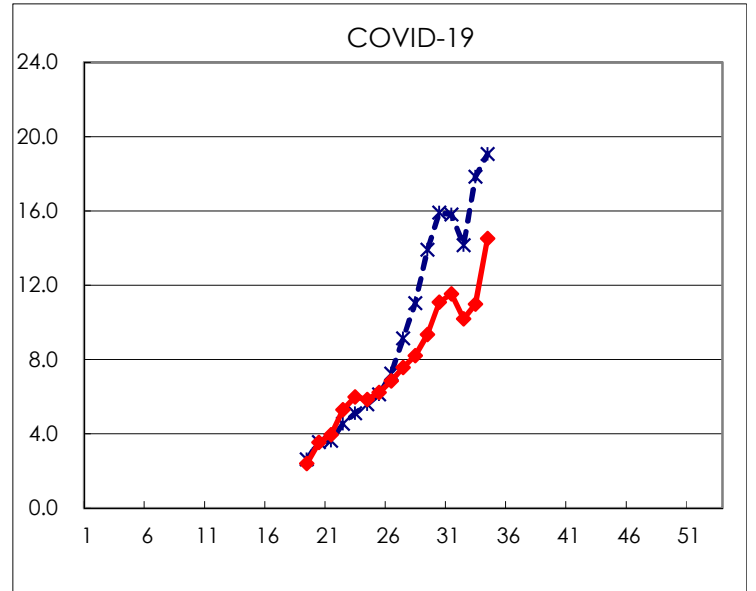
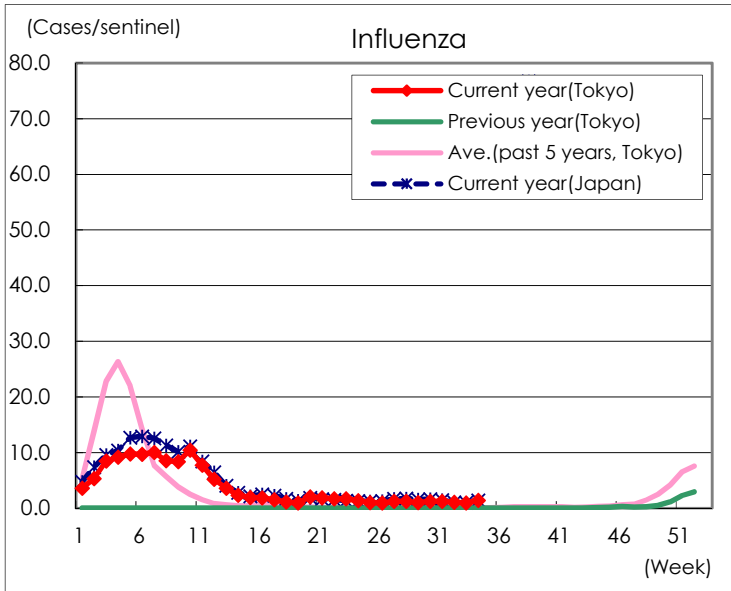
Diseases	Tokyo				
	31st	32nd	33rd	34th	/sentinel
Respiratory syncytial virus infection	250	123	90	85	0.33
Pharyngoconjunctival fever	141	136	154	222	0.87
Group A streptococcal pharyngitis	302	272	205	270	1.06
Infectious gastroenteritis	874	696	614	834	3.27
Chickenpox	29	26	23	29	0.11
Hand, foot, and mouth disease	160	121	113	206	0.81
Erythema infectiosum	2	1	6	8	0.03
Exanthem subitum	70	45	49	59	0.23
Herpangina	528	320	136	181	0.71
Mumps	7	9	7	2	0.01
Kawasaki disease	2	3	4	3	0.01
Cold with exanthems	22	15	6	12	0.05
Influenza	513	416	375	576	1.40
COVID-19	4,767	4,045	4,403	5,956	14.53
Acute hemorrhagic conjunctivitis					
Epidemic keratoconjunctivitis	17	18	14	22	0.58
Bacterial meningitis	2		1		
Aseptic meningitis	1			1	0.04
Mycoplasma pneumonia	1		2	1	0.04
Chlamydial pneumonia (excluding psittacosis)					
Infectious gastroenteritis (only by Rotavirus)					
Influenza-Associated Hospitalizations	1	4	3	12	0.48

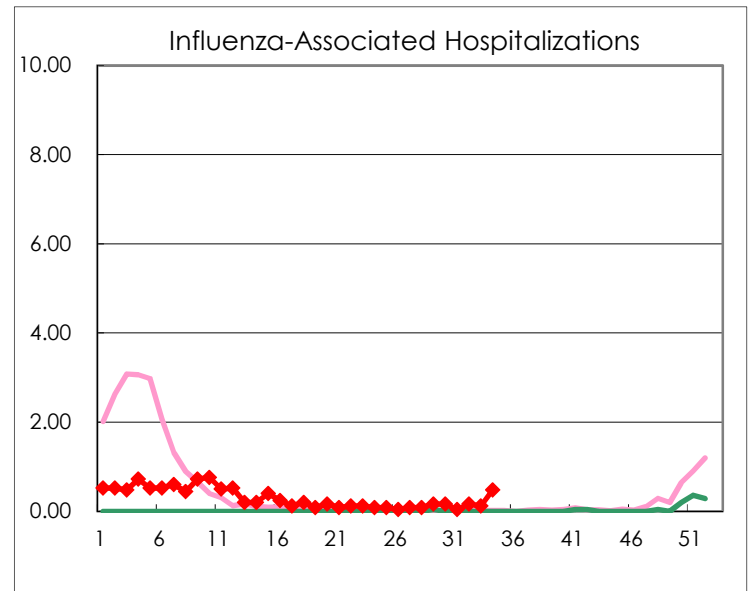
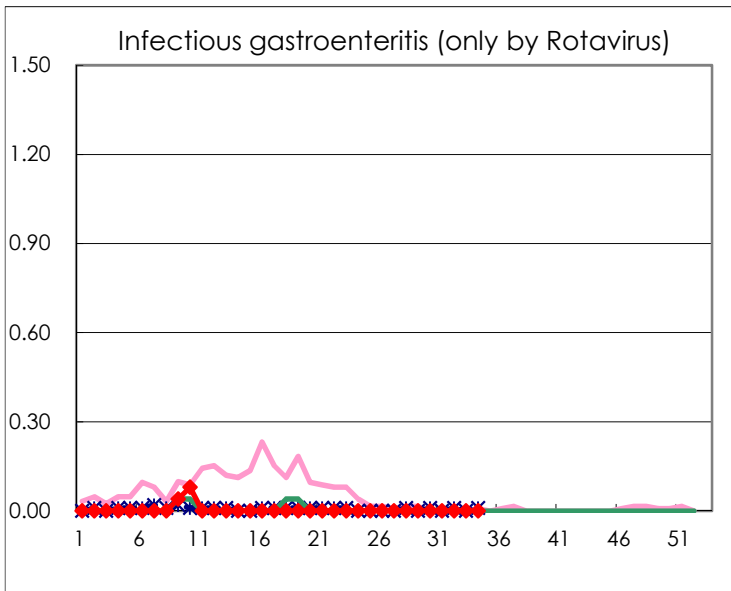
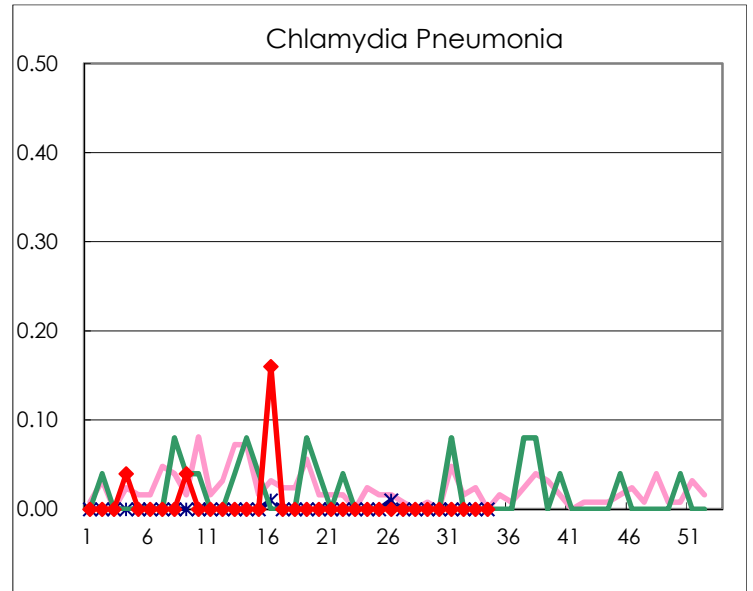
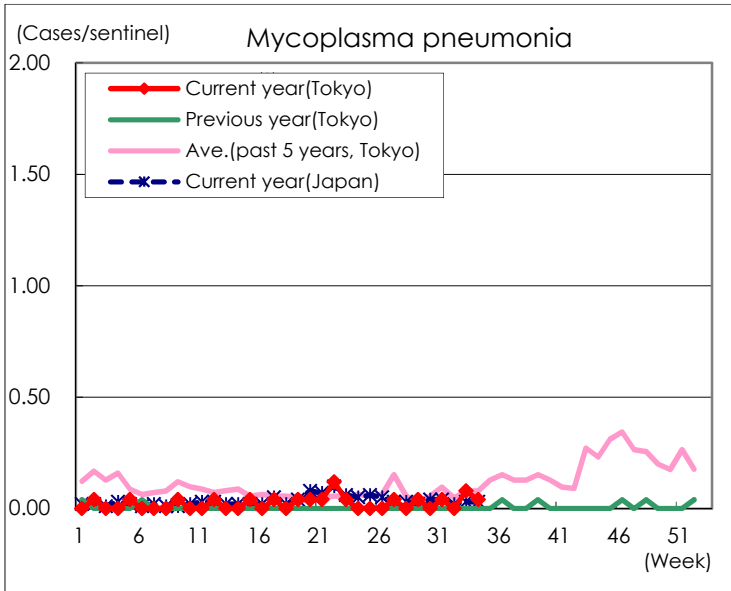
(Blank means 0.)

Disease Trend Graph (weekly reported cases per sentinel in comparison)









Number of sentinel facilities for weekly reporting		
Types of sentinels	Number of sentinels	Sentinels having reported
Pediatric	264	255
Influenza COVID-19	419	410
Ophthalmic	39	38
Specially-designated	25	25