

---

INFECTIOUS DISEASES WEEKLY REPORT

# TOKYO iDWR

Tokyo Metropolitan Infectious Disease Surveillance Center

## 7 September 2023 / Number 35 ( 8/28 ~ 9/3 )

### Surveillance System in Tokyo, Japan

The infectious diseases which all physicians must report  
All physicians must report to health centers the incidence of the diseases which are shown at page one. Health centers electronically report the individual cases to Tokyo Metropolitan Infectious Disease Surveillance Center.

The infectious diseases required to be reported by the sentinels  
The numbers of patients who visit the sentinel clinics or hospitals during a week are reported to health centers in Tokyo. And they electronically report the numbers to Tokyo Metropolitan Infectious Disease Surveillance Center. We have about 500 sentinel clinics and hospitals in Tokyo.

Tokyo Metropolitan Institute of Public Health

TEL:81-3-3363-3213 FAX:81-3-5332-7365

e-mail:tmiph@section.metro.tokyo.jp

URL:idsc.tmiph.metro.tokyo.lg.jp/

---

Number of patients with the diseases which all physicians must report

Category	Diseases	Tokyo					Japan	
		32nd	33rd	34th	35th	Cum 2023	35th	Cum 2023
I	Ebola hemorrhagic fever							
	Crimean-Congo hemorrhagic fever							
	Smallpox							
	South American hemorrhagic fever							
	Plague							
	Marburg disease							
	Lassa fever							
II	Acute poliomyelitis							
	Tuberculosis	46	39	45	40	1,329	234	9,369
	Diphtheria							
	Severe Acute Respiratory Syndrome(SARS)							
	Middle East Respiratory Syndrome (MERS)							
	Avian influenza H5N1							
	Avian influenza H7N9							
III	Cholera					1		1
	Shigellosis				1	6	2	27
	Enterohemorrhagic Escherichia coli infection	16	21	19	17	277	138	2,332
	Typhoid fever					4		27
	Paratyphoid fever					1		6
IV	Hepatitis E	2	1	1	2	125	9	388
	West Nile fever							
	Hepatitis A					6	1	34
	Echinococcosis							10
	Mpox	1			1	142	1	188
	Yellow fever							
	Psittacosis							7
	Omsk hemorrhagic fever							
	Relapsing fever						2	17
	Kyasanur forest disease							
	Q fever							
	Rabies							
	Coccidioidomycosis							1
	Zika virus infection							
	Severe Fever with Thrombocytopenia Syndrome						1	109
	Hemorrhagic fever with renal syndrome							
	Western equine encephalitis							
	Tick-borne encephalitis							
	Anthrax							
	Chikungunya fever							2
	Scrub typhus(Tsutsugamushi disease)					5	1	113
	Dengue fever	4	1	2	5	28	7	84
	Eastern equine encephalitis							
	Avian influenza (excluding H5N1 and H7N9)							
	Nipah virus infection							
	Japanese spotted fever					1	15	277
	Japanese encephalitis							
	Hantavirus pulmonary syndrome							
	Herpes B virus infection							
	Glanders							
	Brucellosis							1
	Venezuelan equine encephalitis							
	Hendra virus infection							
Epidemic typhus								
Botulism								
Malaria					4	3	15	
Tularemia								
Lyme disease					1	2	20	
Lyssavirus infection(excluding rabies)								
Rift valley fever								
Melioidosis								
Legionellosis	8	2	4	6	107	45	1,430	
Leptospirosis				1	2	2	15	
Rocky mountain spotted fever								

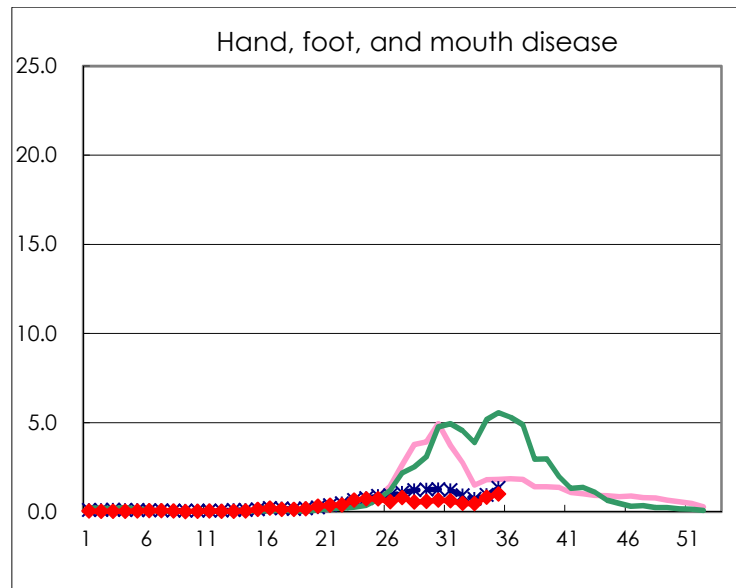
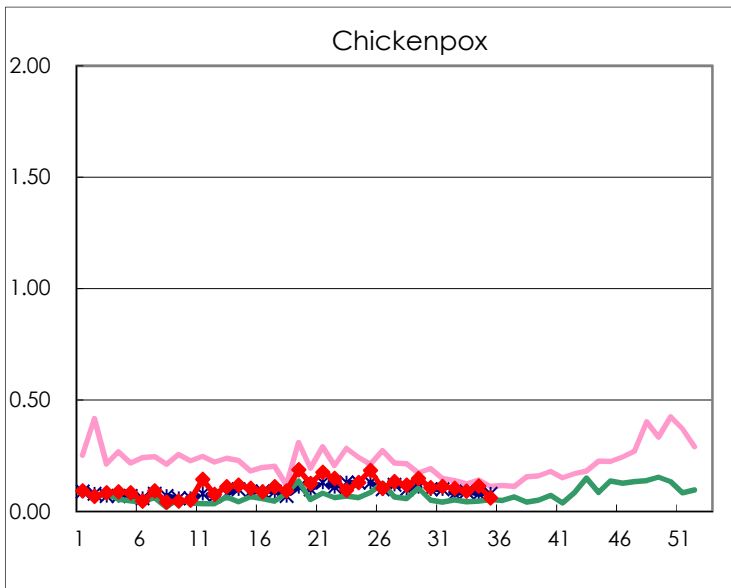
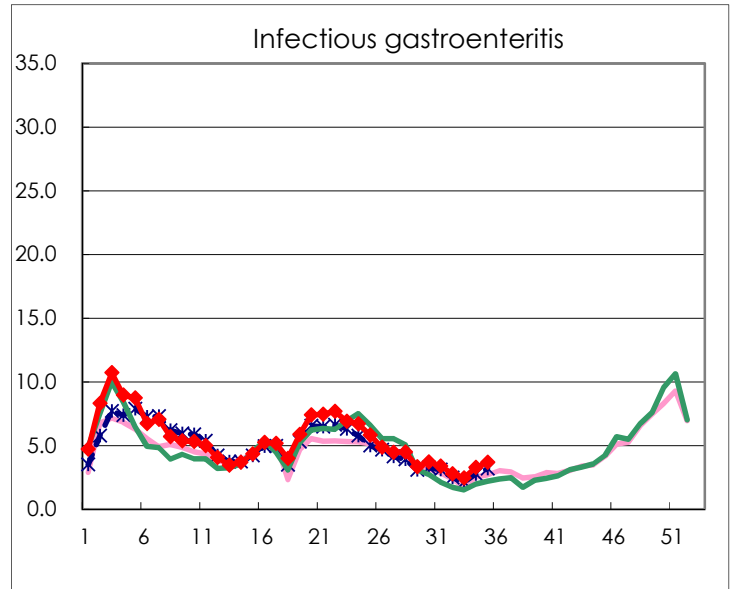
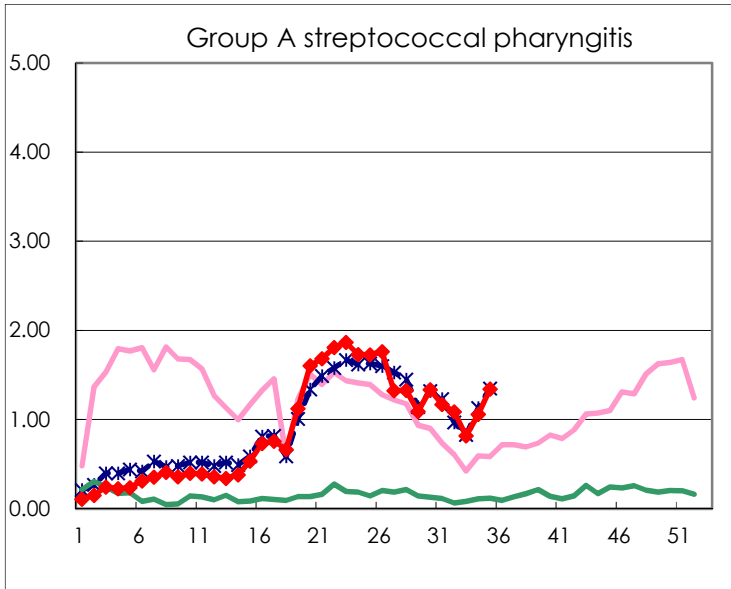
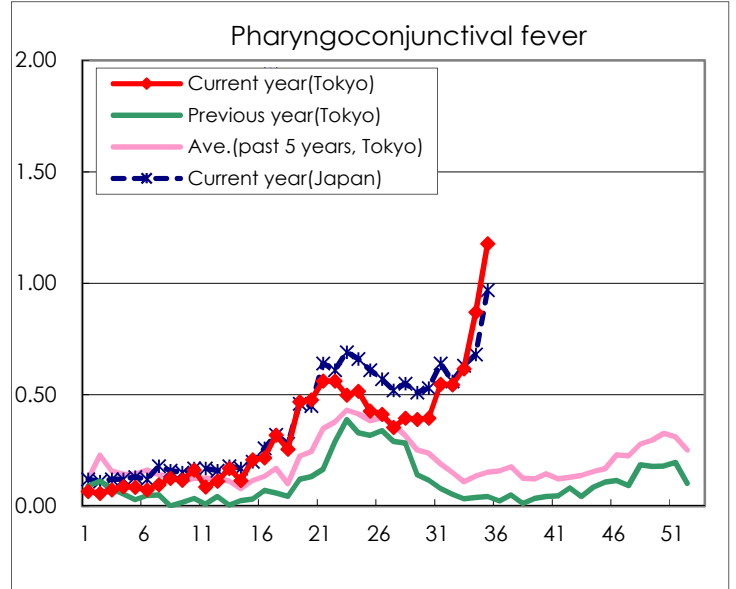
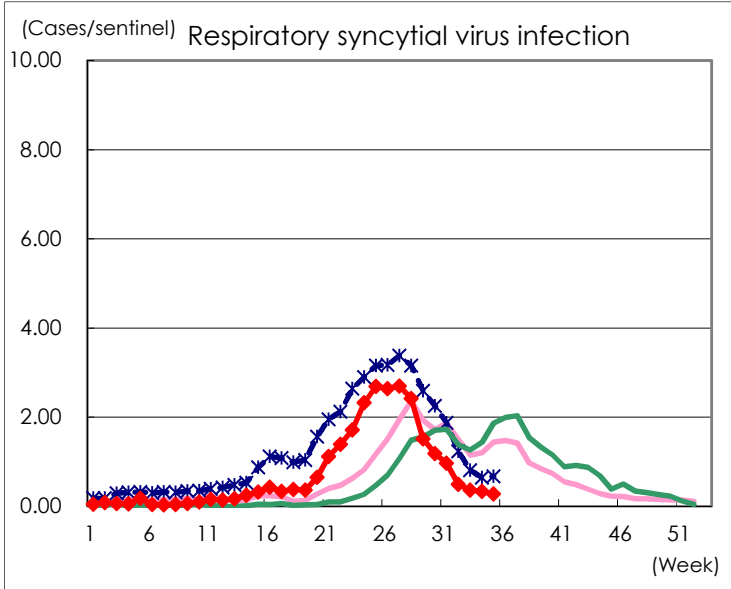
Category	Diseases	Tokyo					Japan	
		32nd	33rd	34th	35th	Cum 2023	35th	Cum 2023
V	Amebiasis	2	1	5	1	66	4	343
	Viral hepatitis(excluding hepatitis A and E)		1	1		37	5	173
	CRE infection	5	6	4	2	138	39	1,266
	Acute Flaccid Paralysis (excluding Acute poliomyelitis)					5		41
	Acute encephalitis(excluding JE and WNE)	2	1	1		22	10	364
	Cryptosporidiosis					1		7
	Creutzfeldt-Jakob disease	1	3		1	15	1	104
	Severe invasive streptococcal infections(TSLS)	1	2		1	79	7	558
	Acquired immunodeficiency syndrome (AIDS)	8	4	5	5	212	10	638
	Giardiasis			1		9		32
	Invasive <i>Haemophilus influenzae</i> disease		2	2		31	8	377
	Invasive meningococcal disease					1		11
	Invasive pneumococcal disease	7	3	7	5	134	21	1,202
	Varicella (limited to hospitalized case)	3	1	1		47	5	254
	Congenital rubella syndrome							
	Syphilis	71	74	79	74	2,526	207	10,110
	Disseminated cryptococcosis				1	13	1	116
	Tetanus	1	1			4		71
	Vancomycin-resistant <i>S. aureus</i> infection							
	Vancomycin-resistant <i>Enterococcus</i> infection				1	7	1	82
	Pertussis	2	1	5	1	89	11	631
Rubella					4	1	11	
Measles				1	7	2	25	
MDRA infection					1		11	

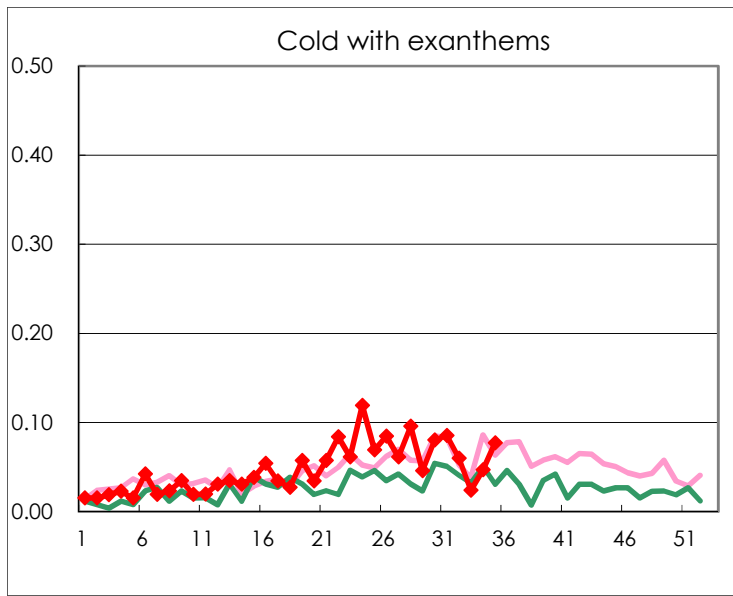
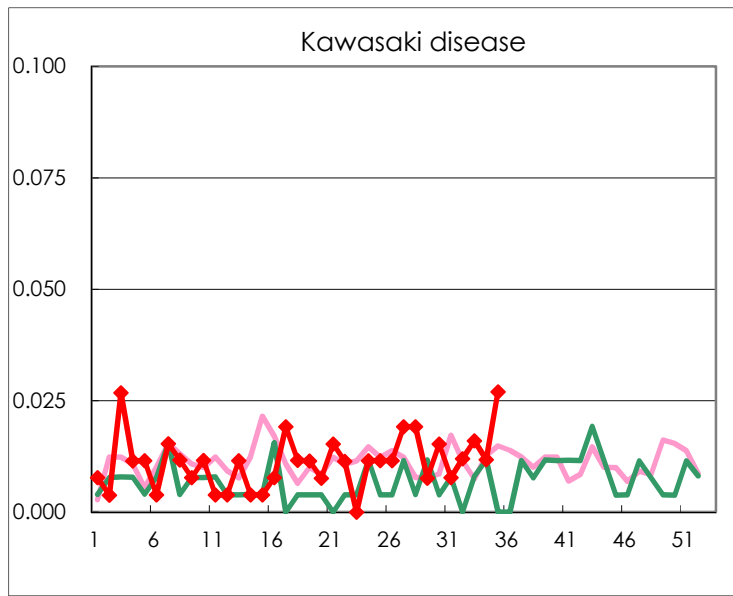
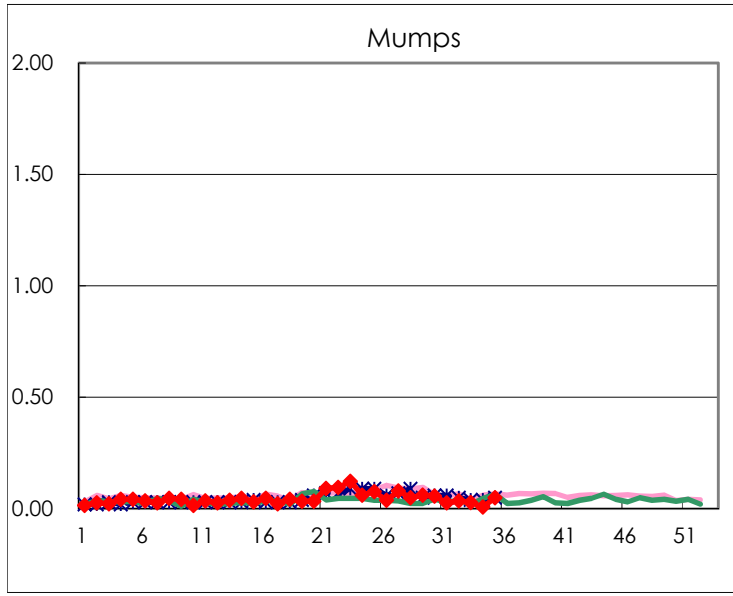
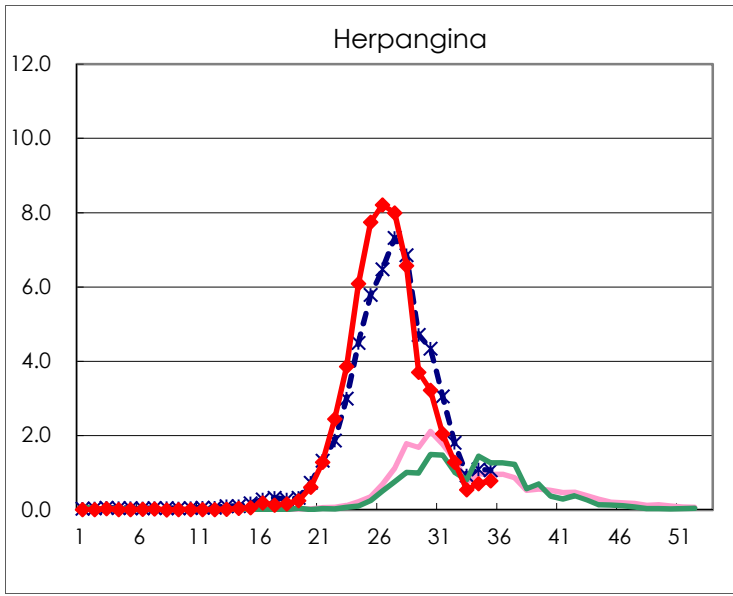
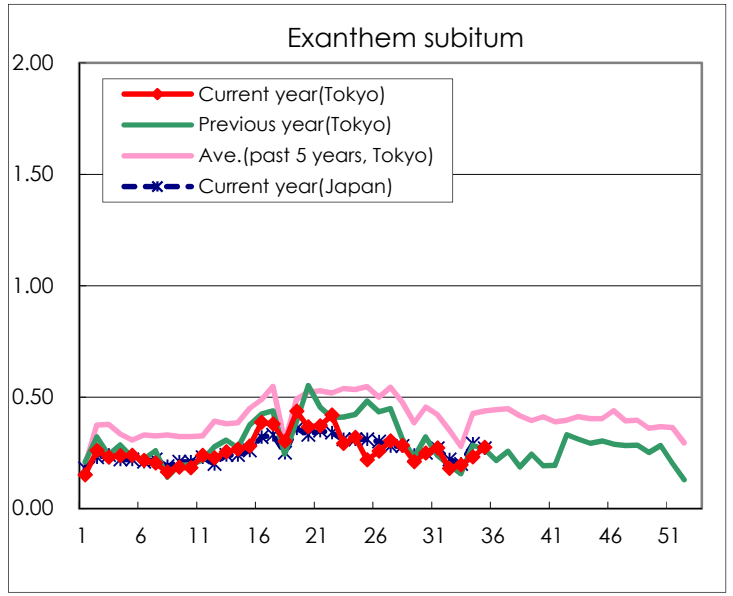
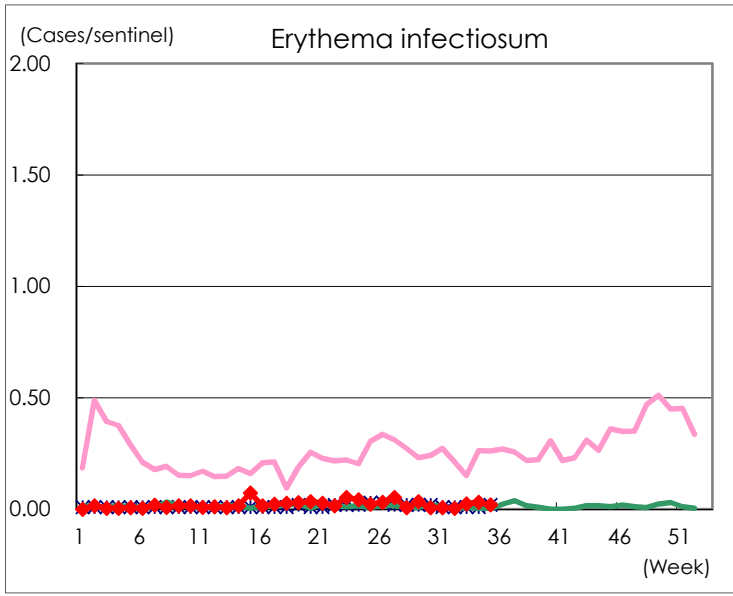
Number of patients with the diseases to be reported  
by the designated clinics and hospitals

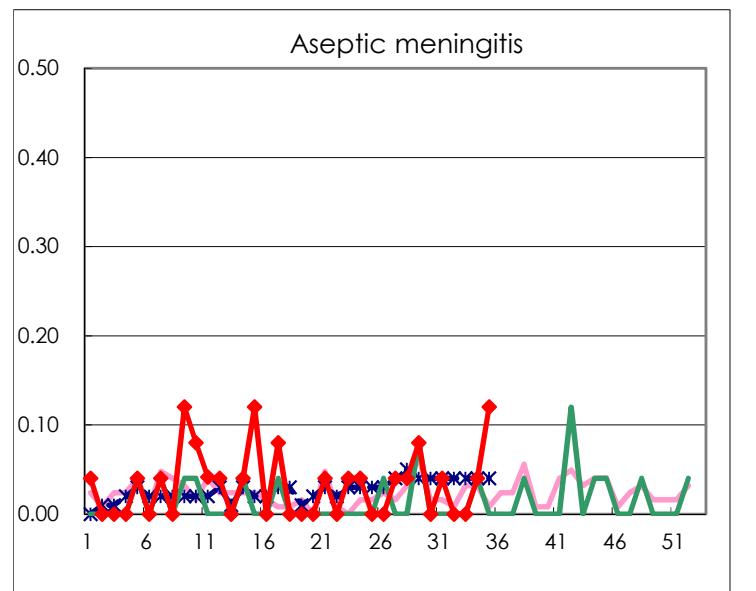
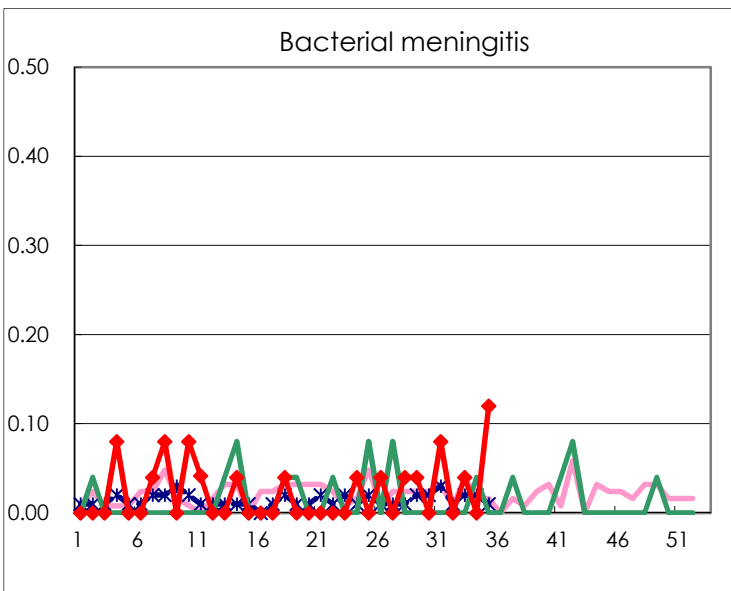
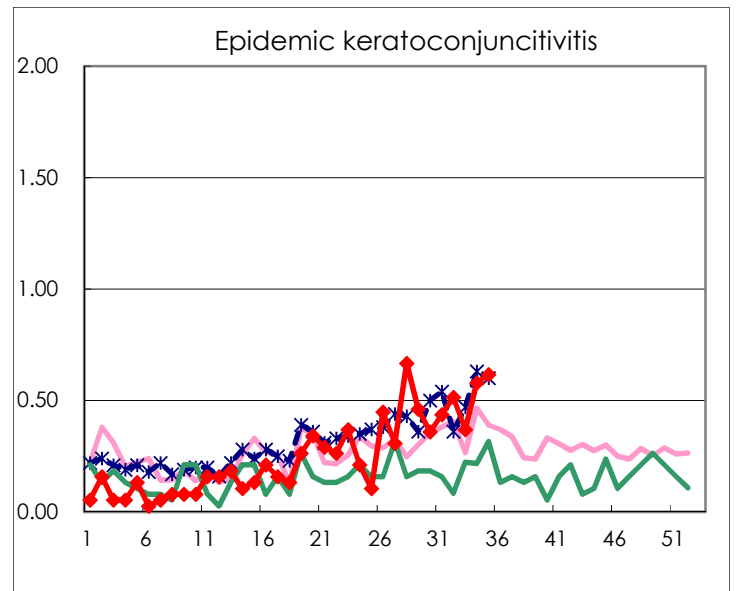
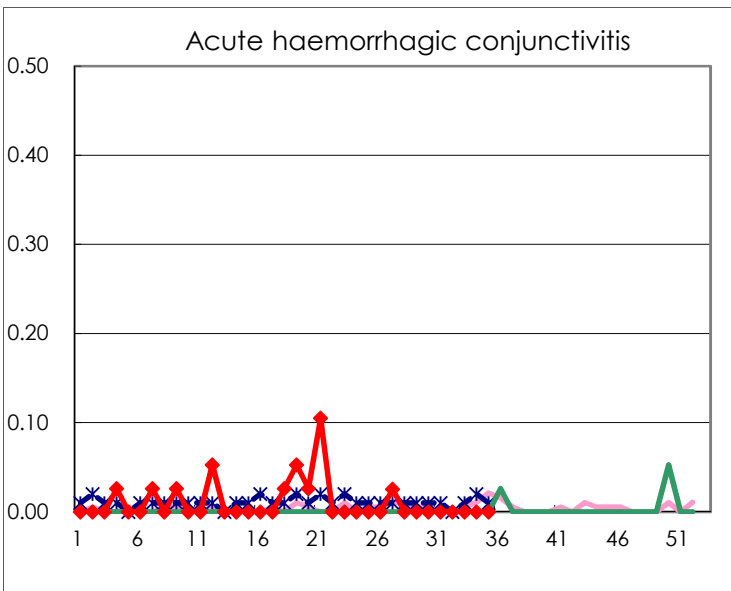
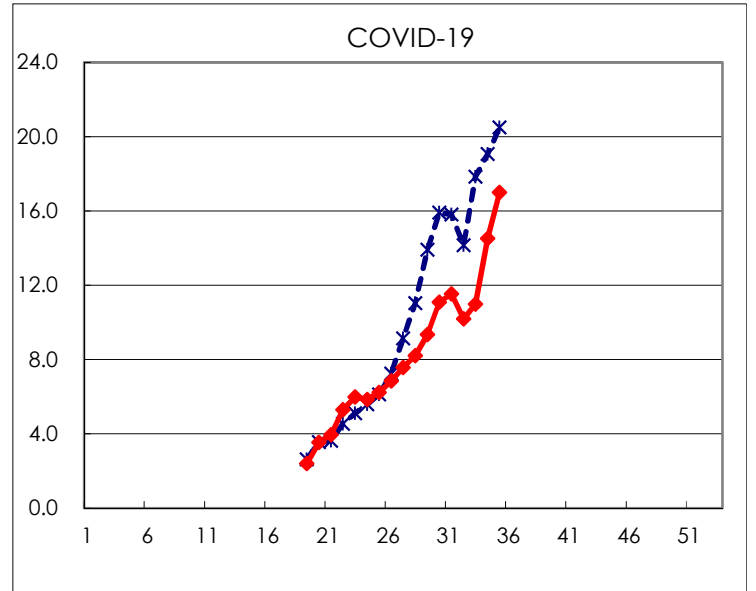
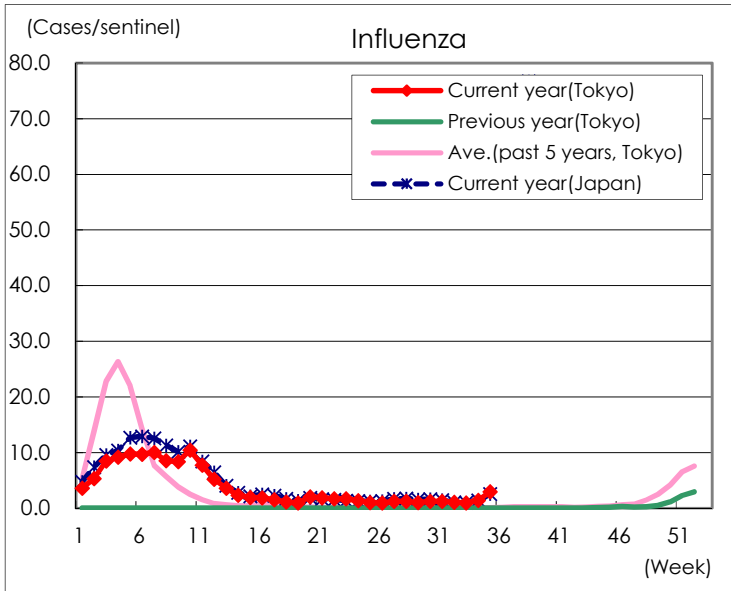
Diseases	Tokyo				
	32nd	33rd	34th	35th	/sentinel
Respiratory syncytial virus infection	123	90	85	72	0.28
Pharyngoconjunctival fever	136	154	222	305	1.18
Group A streptococcal pharyngitis	272	205	270	348	1.34
Infectious gastroenteritis	696	614	834	955	3.69
Chickenpox	26	23	29	16	0.06
Hand, foot, and mouth disease	121	113	206	259	1.00
Erythema infectiosum	1	6	8	5	0.02
Exanthem subitum	45	49	59	71	0.27
Herpangina	320	136	181	202	0.78
Mumps	9	7	2	13	0.05
Kawasaki disease	3	4	3	7	0.03
Cold with exanthems	15	6	12	20	0.08
Influenza	416	375	576	1,225	2.96
COVID-19	4,045	4,403	5,956	7,043	17.01
Acute hemorrhagic conjunctivitis					
Epidemic keratoconjunctivitis	18	14	22	24	0.62
Bacterial meningitis		1		3	0.12
Aseptic meningitis			1	3	0.12
Mycoplasma pneumonia		2	1	1	0.04
Chlamydial pneumonia (excluding psittacosis)					
Infectious gastroenteritis (only by Rotavirus)					
Influenza-Associated Hospitalizations	4	3	12	16	0.64

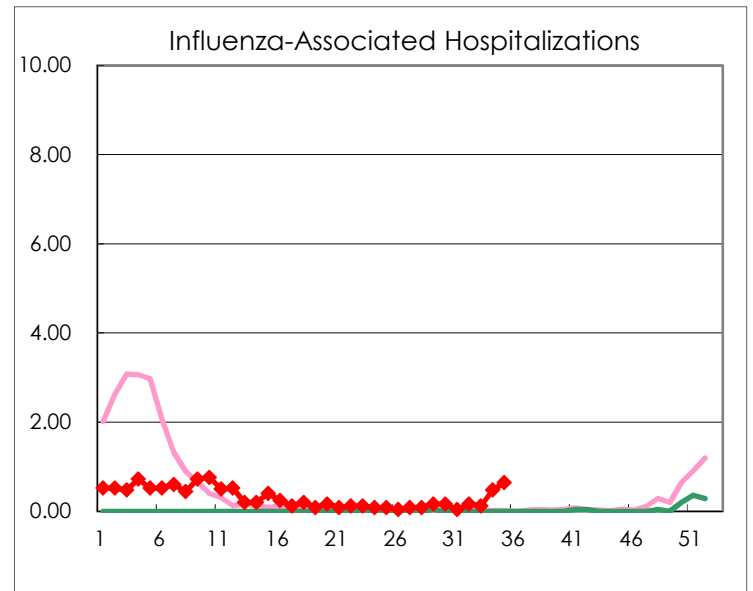
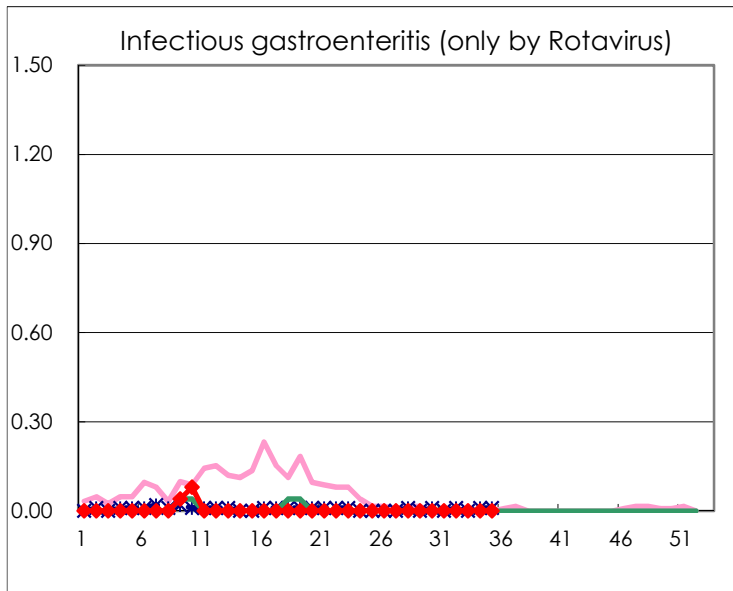
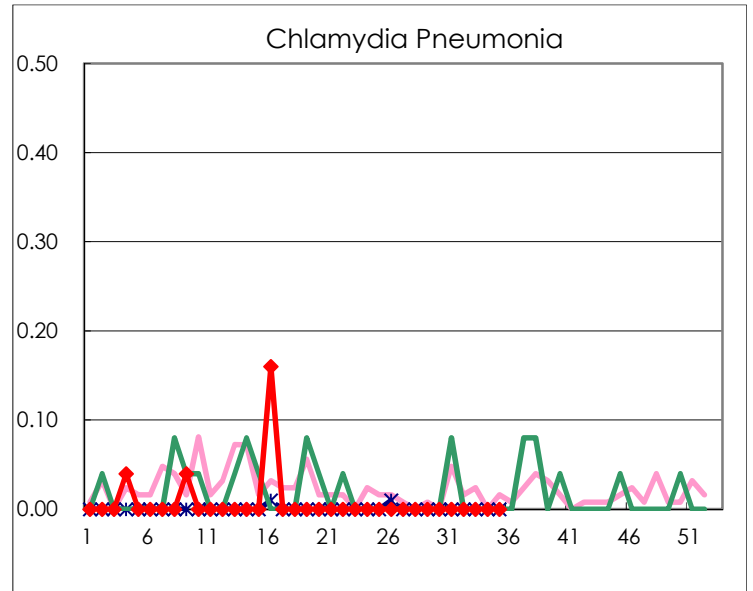
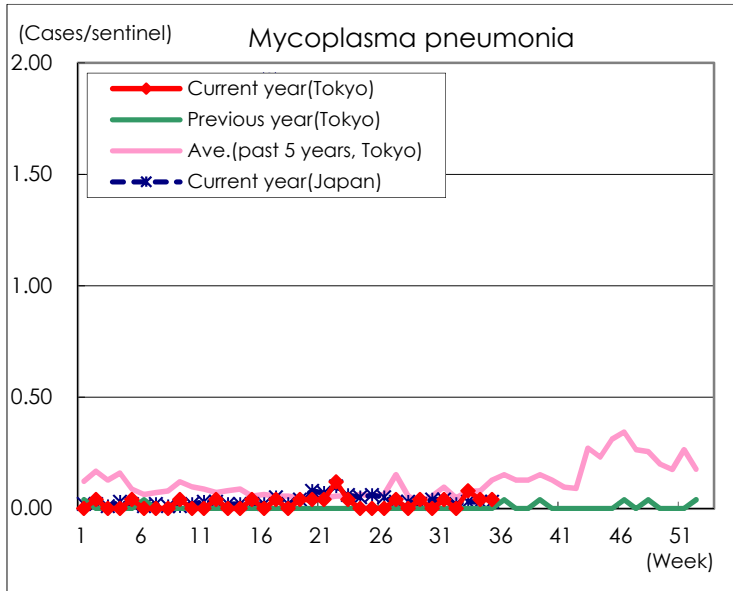
( Blank means 0. )

# Disease Trend Graph (weekly reported cases per sentinel in comparison)









Number of sentinel facilities for weekly reporting		
Types of sentinels	Number of sentinels	Sentinels having reported
Pediatric	264	259
Influenza COVID-19	419	414
Ophthalmic	39	39
Specially-designated	25	25