
INFECTIOUS DISEASES WEEKLY REPORT

TOKYO IDWR

Tokyo Metropolitan Infectious Disease Surveillance Center

5 October 2023 / Number 39
(9/25 ~ 10/1)

Surveillance System in Tokyo, Japan

The infectious diseases which all physicians must report
All physicians must report to health centers the incidence of the diseases which are shown at page one. Health centers electronically report the individual cases to Tokyo Metropolitan Infectious Disease Surveillance Center.

The infectious diseases required to be reported by the sentinels
The numbers of patients who visit the sentinel clinics or hospitals during a week are reported to health centers in Tokyo. And they electronically report the numbers to Tokyo Metropolitan Infectious Disease Surveillance Center. We have about 500 sentinel clinics and hospitals in Tokyo.

Tokyo Metropolitan Institute of Public Health

TEL:81-3-3363-3213 FAX:81-3-5332-7365

e-mail:tmiph@section.metro.tokyo.jp

URL:idsc.tmiph.metro.tokyo.lg.jp/

Number of patients with the diseases which all physicians must report

Category	Diseases	Tokyo					Japan	
		36th	37th	38th	39th	Cum 2023	39th	Cum 2023
I	Ebola hemorrhagic fever							
	Crimean-Congo hemorrhagic fever							
	Smallpox							
	South American hemorrhagic fever							
	Plague							
	Marburg disease							
	Lassa fever							
II	Acute poliomyelitis							
	Tuberculosis	34	44	28	38	1,476	238	10,496
	Diphtheria							
	Severe Acute Respiratory Syndrome(SARS)							
	Middle East Respiratory Syndrome (MERS)							
	Avian influenza H5N1							
	Avian influenza H7N9							
III	Cholera	1				2		2
	Shigellosis				1	7	1	28
	Enterohemorrhagic Escherichia coli infection	15	15	5	9	321	90	2,829
	Typhoid fever		1		1	6	1	31
	Paratyphoid fever		1		1	3	1	8
IV	Hepatitis E	2	3	1		131	6	419
	West Nile fever							
	Hepatitis A			1	1	8	1	38
	Echinococcosis							11
	Mpox		4	2	2	150	1	199
	Yellow fever							
	Psittacosis							7
	Omsk hemorrhagic fever							
	Relapsing fever						3	21
	Kyasanur forest disease							
	Q fever							
	Rabies							
	Coccidioidomycosis						1	2
	Zika virus infection							
	Severe Fever with Thrombocytopenia Syndrome						4	117
	Hemorrhagic fever with renal syndrome							
	Western equine encephalitis							
	Tick-borne encephalitis							
	Anthrax							
	Chikungunya fever				1	1	2	4
	Scrub typhus(Tsutsugamushi disease)					5	2	117
	Dengue fever	1		3	2	34	13	113
	Eastern equine encephalitis							
	Avian influenza (excluding H5N1 and H7N9)							
	Nipah virus infection							
	Japanese spotted fever					1	20	346
	Japanese encephalitis							2
	Hantavirus pulmonary syndrome							
	Herpes B virus infection							
	Glanders							
	Brucellosis							1
	Venezuelan equine encephalitis							
	Hendra virus infection							
Epidemic typhus								
Botulism								
Malaria		2		1	7	2	22	
Tularemia								
Lyme disease					1	3	26	
Lyssavirus infection(excluding rabies)								
Rift valley fever								
Melioidosis								
Legionellosis	3	5	8	5	128	65	1,687	
Leptospirosis				2	4	5	32	
Rocky mountain spotted fever								

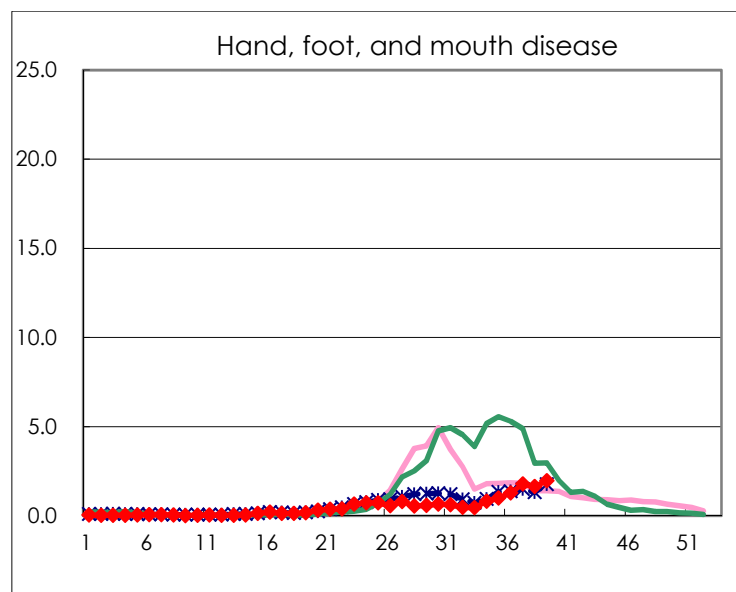
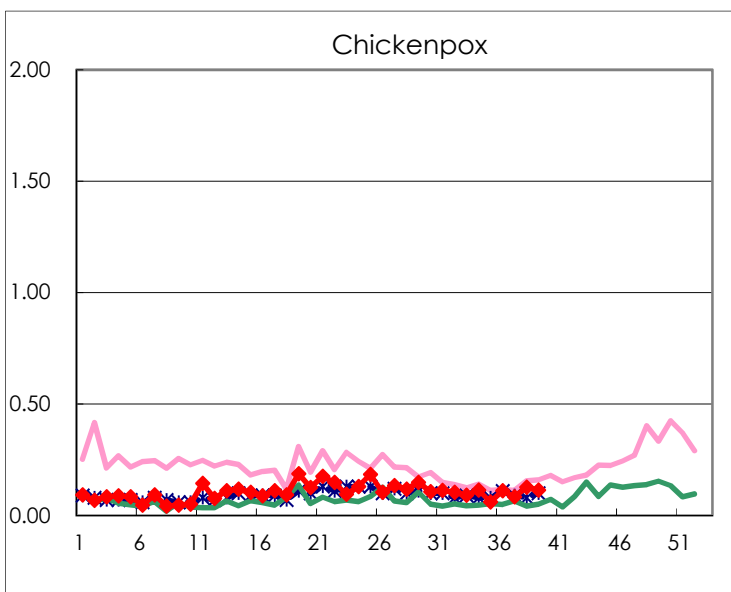
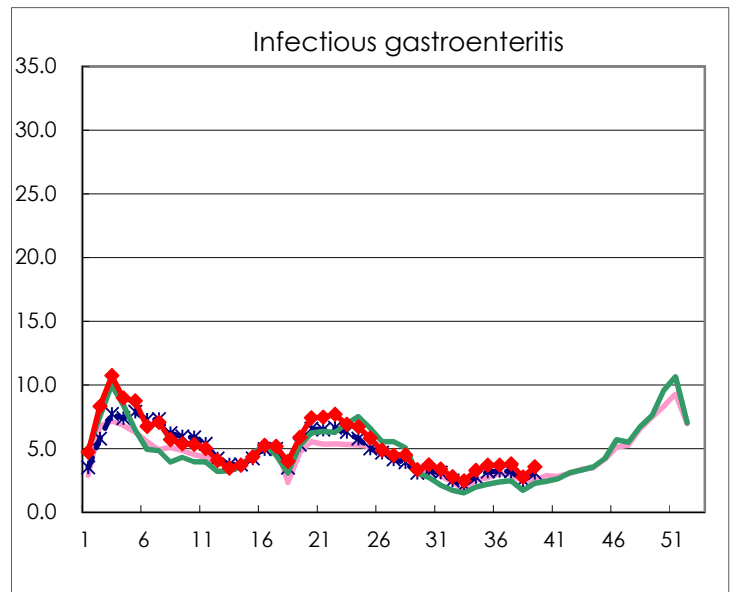
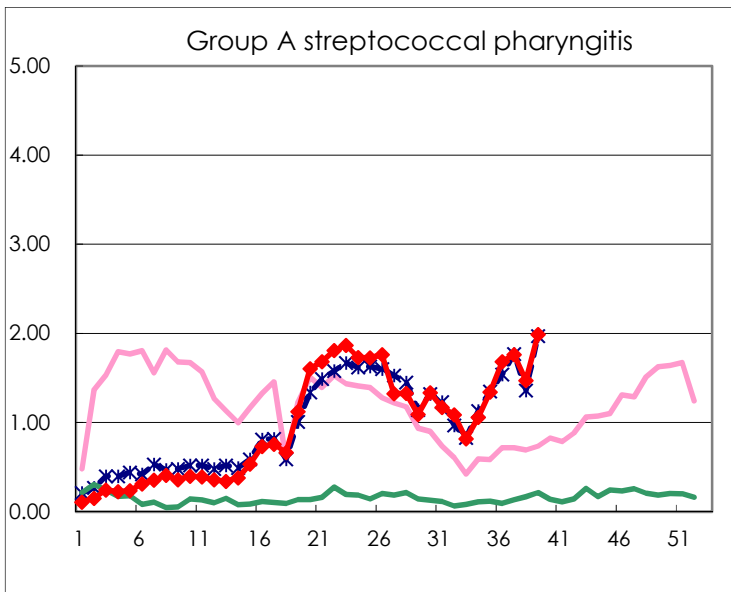
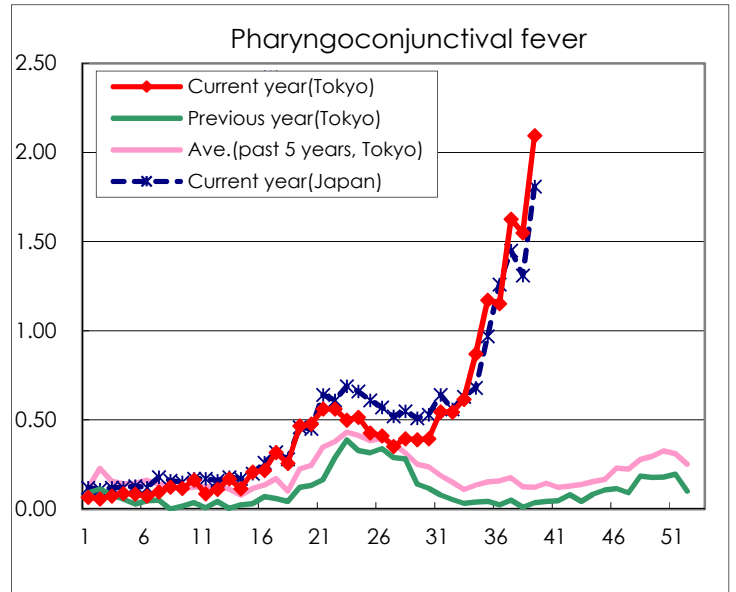
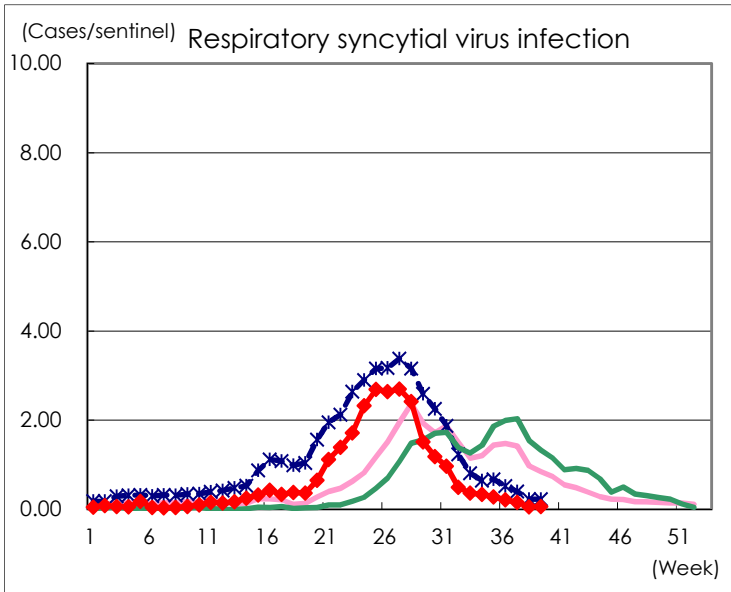
Category	Diseases	Tokyo					Japan	
		36th	37th	38th	39th	Cum 2023	39th	Cum 2023
V	Amebiasis		1	1	4	72	6	385
	Viral hepatitis(excluding hepatitis A and E)			1		38	7	190
	CRE infection	3	4	12	5	162	36	1,489
	Acute Flaccid Paralysis (excluding Acute poliomyelitis)				1	6	1	45
	Acute encephalitis(excluding JE and WNE)	3		1		26	15	414
	Cryptosporidiosis					1		8
	Creutzfeldt-Jakob disease		1			16	3	120
	Severe invasive streptococcal infections(TSLS)	3	1	1	3	87	13	618
	Acquired immunodeficiency syndrome (AIDS)	2	3	5	5	227	11	698
	Giardiasis					9	2	34
	Invasive <i>Haemophilus influenzae</i> disease	1	1	2	2	38	9	421
	Invasive meningococcal disease				1	2	1	13
	Invasive pneumococcal disease	2	6	4	1	147	22	1,306
	Varicella (limited to hospitalized case)		1			48	5	278
	Congenital rubella syndrome							
	Syphilis	61	72	61	55	2,776	214	11,260
	Disseminated cryptococcosis				1	14	1	127
	Tetanus				1	5	3	78
	Vancomycin-resistant <i>S. aureus</i> infection							
	Vancomycin-resistant <i>Enterococcus</i> infection		1	1		9	1	93
	Pertussis	1			3	93	14	697
Rubella					4		11	
Measles					7		26	
MDRA infection					1		11	

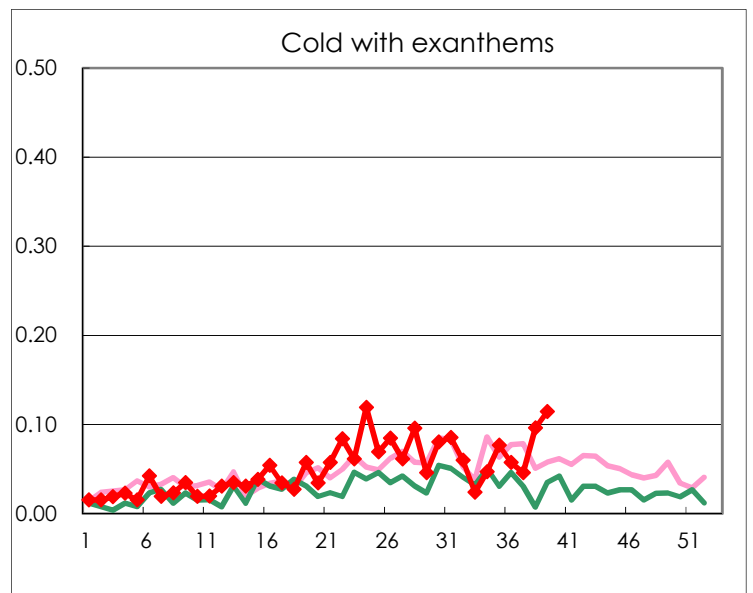
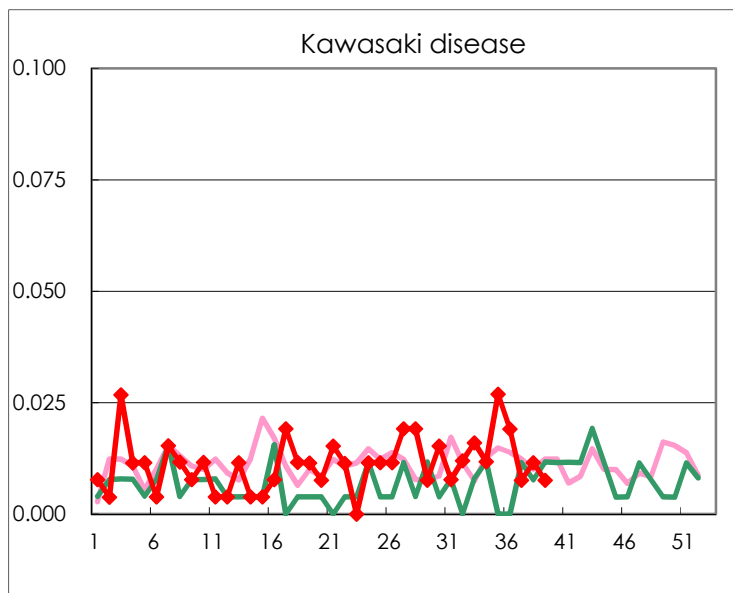
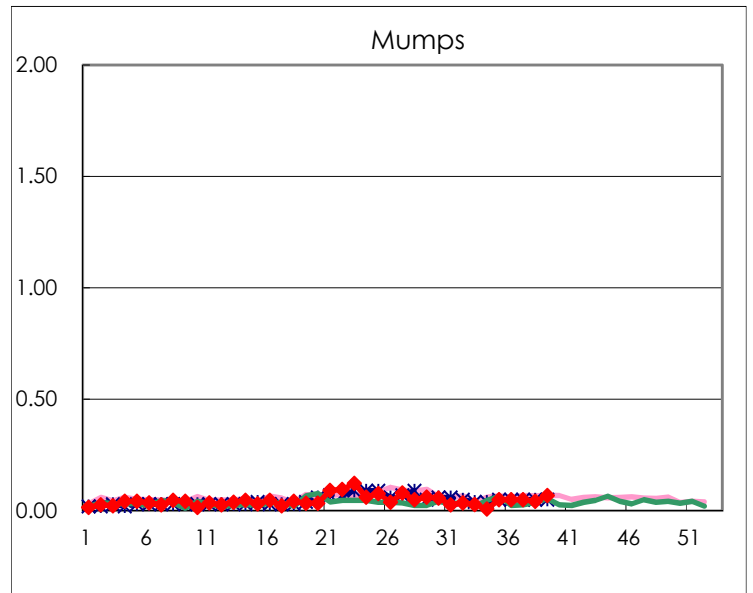
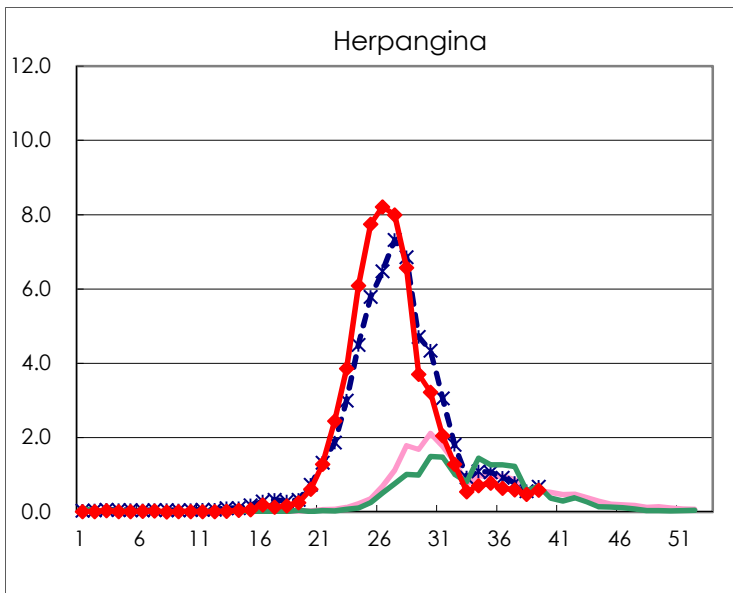
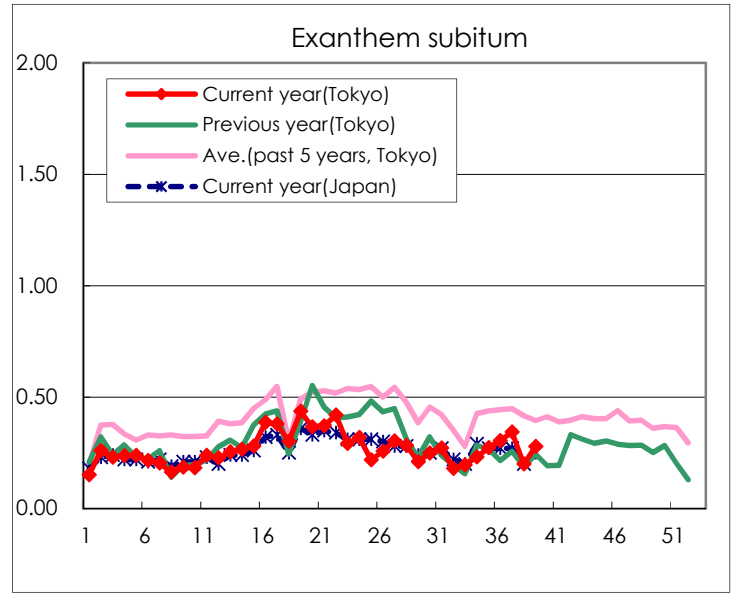
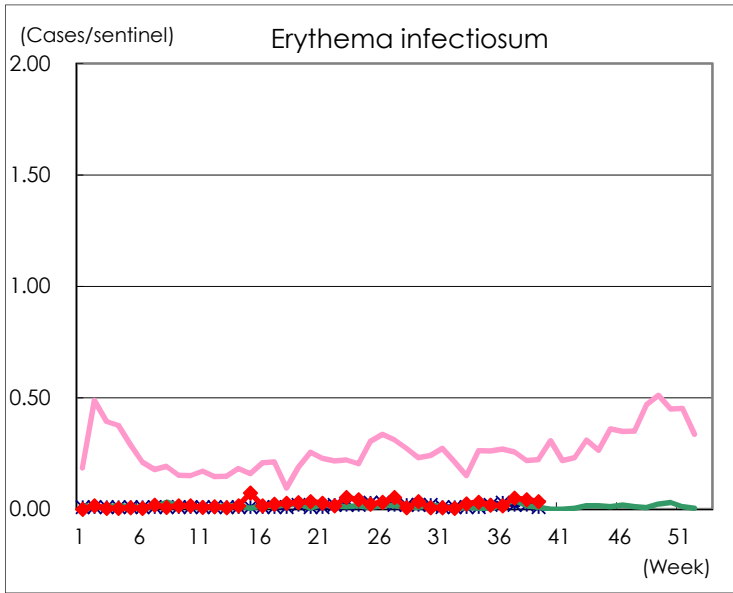
Number of patients with the diseases to be reported
by the designated clinics and hospitals

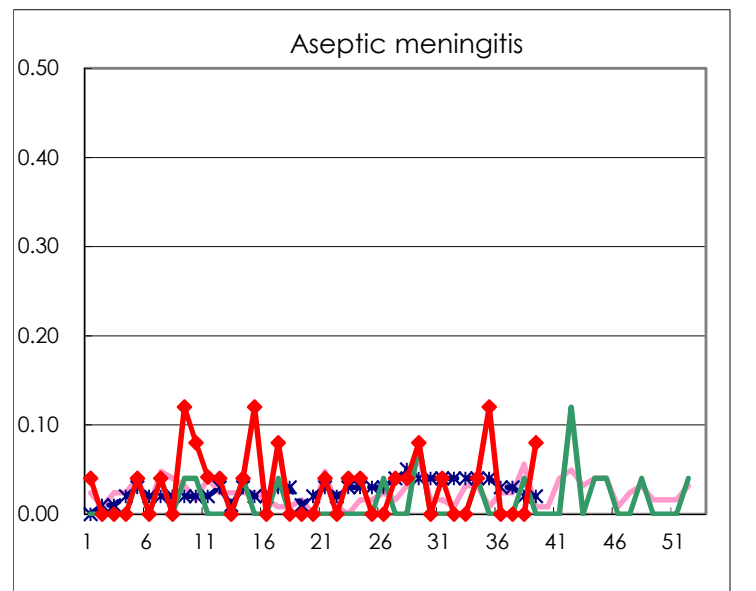
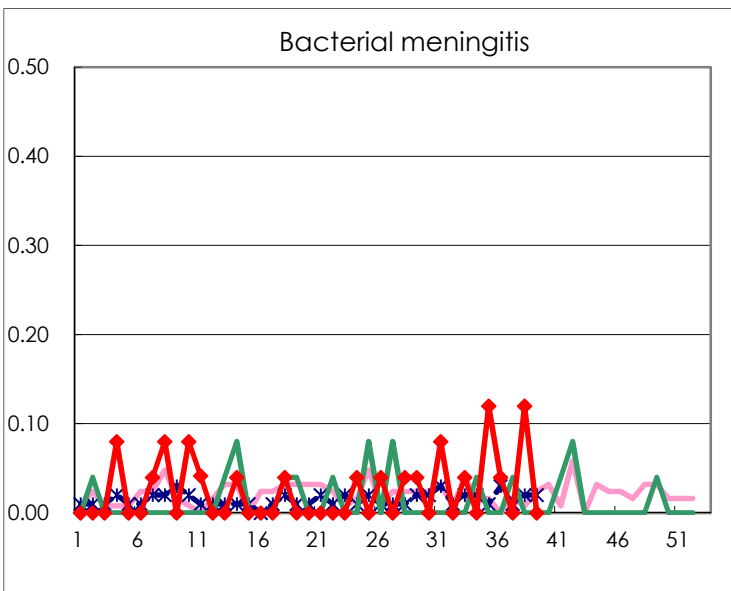
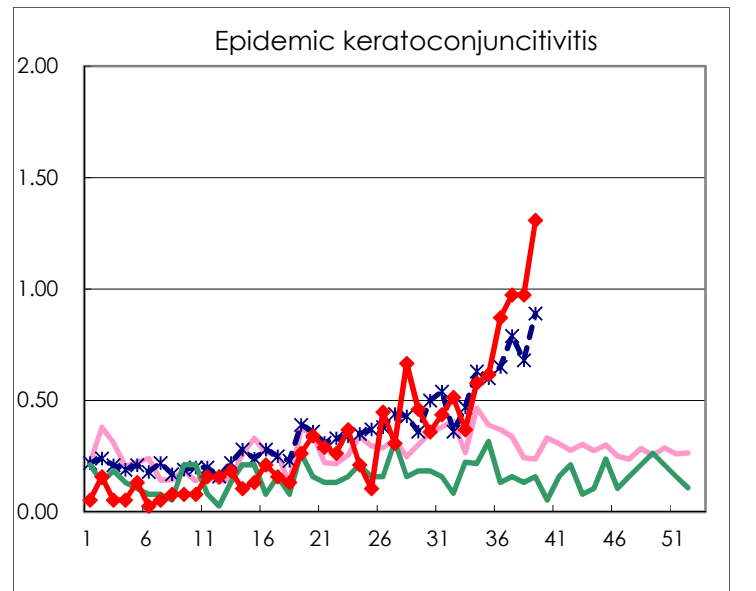
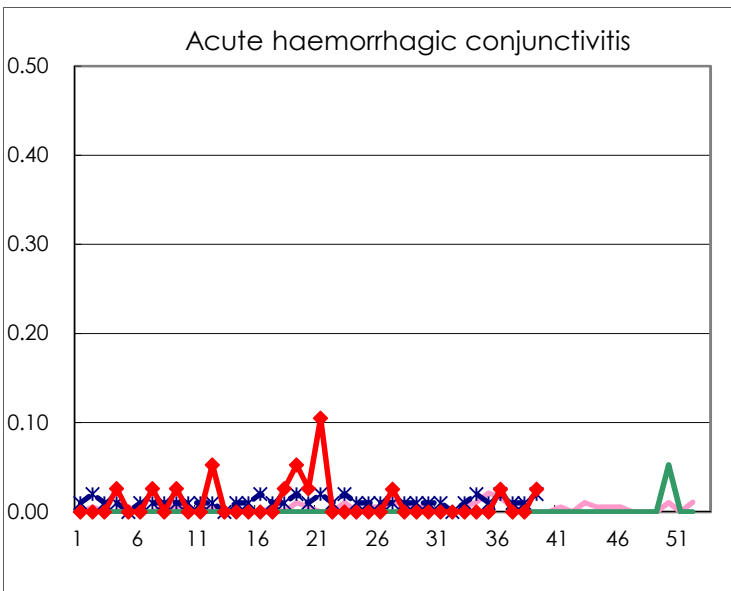
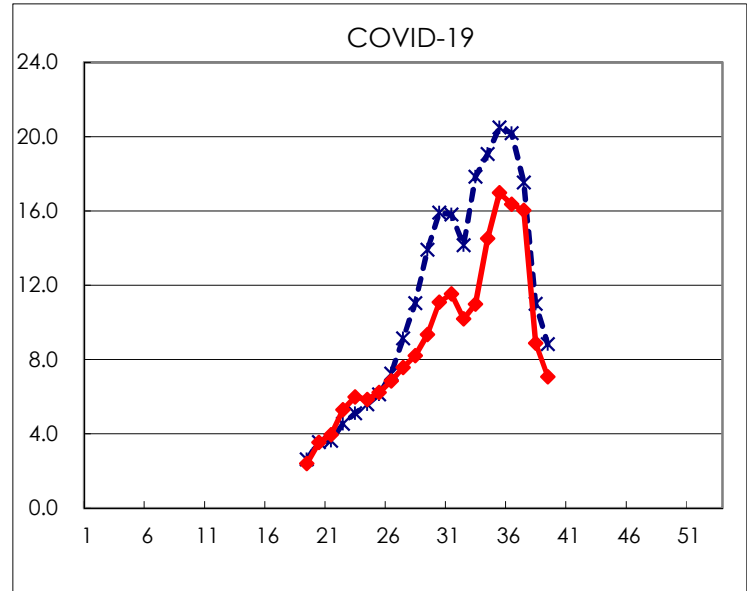
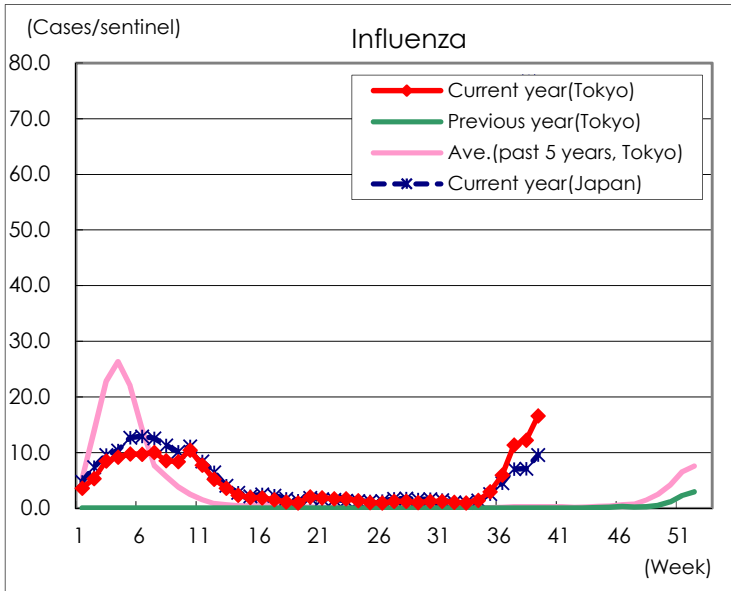
Diseases	Tokyo				
	36th	37th	38th	39th	/sentinel
Respiratory syncytial virus infection	55	41	14	17	0.06
Pharyngoconjunctival fever	302	426	403	549	2.10
Group A streptococcal pharyngitis	441	462	383	521	1.99
Infectious gastroenteritis	964	990	717	934	3.56
Chickenpox	29	22	33	30	0.11
Hand, foot, and mouth disease	338	469	429	517	1.97
Erythema infectiosum	4	13	11	9	0.03
Exanthem subitum	80	90	52	73	0.28
Herpangina	166	156	122	153	0.58
Mumps	13	13	11	18	0.07
Kawasaki disease	5	2	3	2	0.01
Cold with exanthems	15	12	25	30	0.11
Influenza	2,481	4,742	5,060	6,913	16.58
COVID-19	6,824	6,688	3,688	2,951	7.08
Acute hemorrhagic conjunctivitis	1			1	0.03
Epidemic keratoconjunctivitis	34	38	38	51	1.31
Bacterial meningitis	1		3		
Aseptic meningitis				2	0.08
Mycoplasma pneumonia		1	1		
Chlamydial pneumonia (excluding psittacosis)				1	0.04
Infectious gastroenteritis (only by Rotavirus)	1				
Influenza-Associated Hospitalizations	10	13	24	28	1.12
COVID-19-Associated Hospitalizations				145	5.80

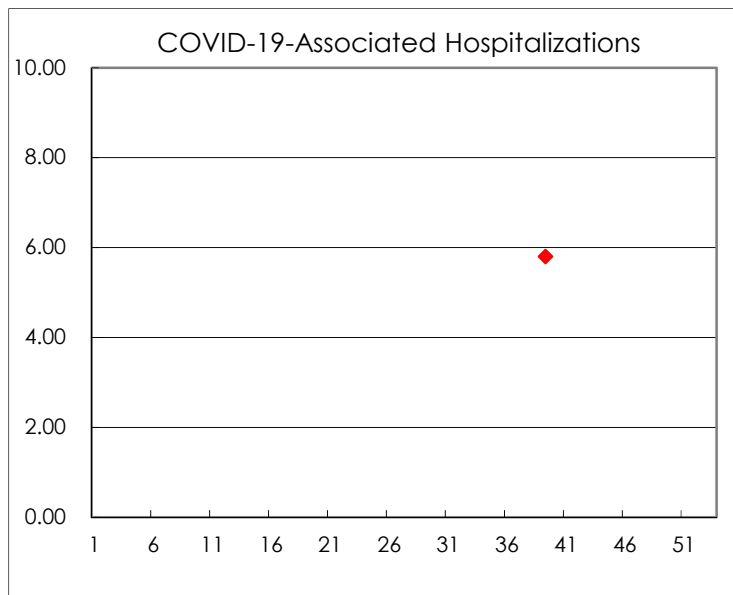
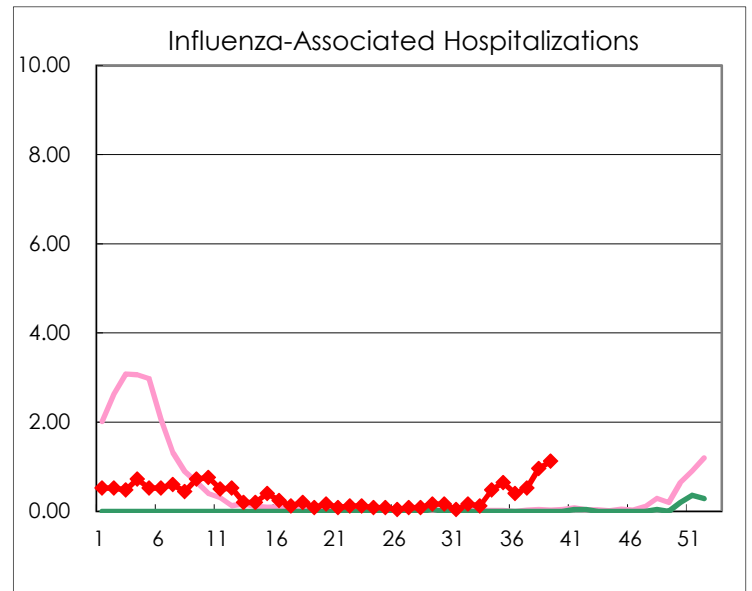
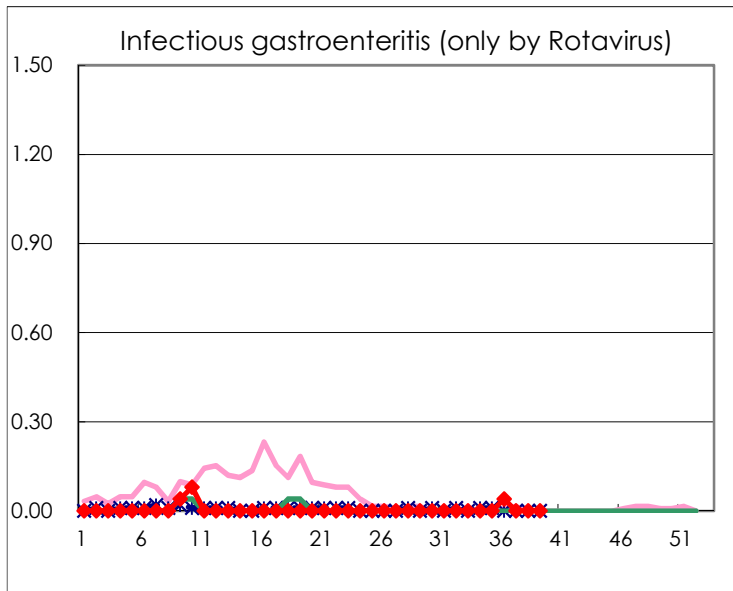
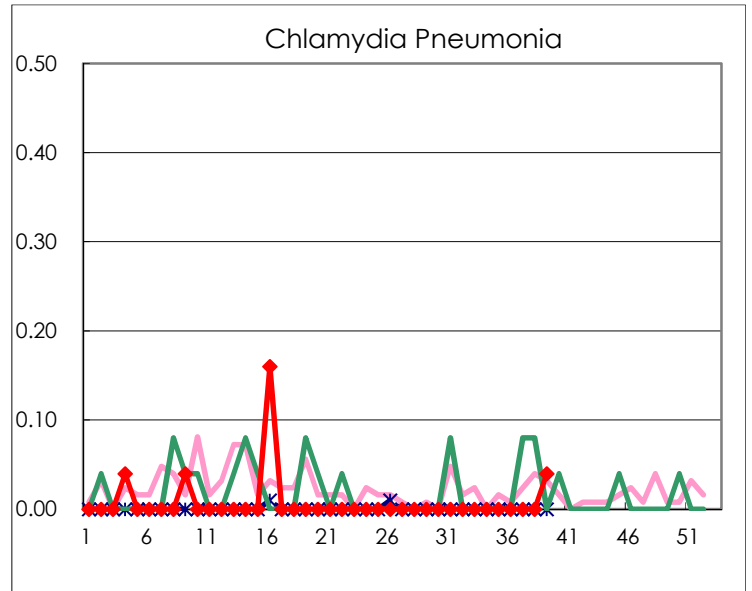
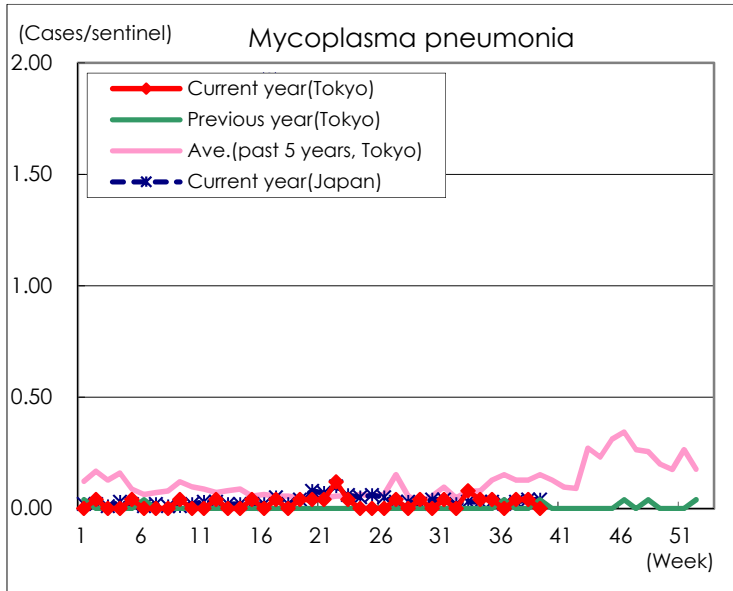
(Blank means 0.)

Disease Trend Graph (weekly reported cases per sentinel in comparison)









Number of sentinel facilities for weekly reporting		
Types of sentinels	Number of sentinels	Sentinels having reported
Pediatric	264	262
Influenza COVID-19	419	417
Ophthalmic	39	39
Specially-designated	25	25