
传染病周报

TOKYO iDWR

東京都传染病信息中心

2023年10月12日 / 40号
10月2日 - 10月8日

东京传染病监控系统

所有医生均必须上报的传染病

医生必须向卫生所通报发生该疾病。卫生所则向東京都传染病信息中心报告个别案例。

定点医疗机构上报的传染病

由定点诊所或医院每周向卫生所上报来访患者数量。卫生所则向東京都传染病信息中心报告患者总数。東京都内约有500家定点诊所与医院。

東京都健康安全研究中心

TEL:81-3-3363-3213 FAX:81-3-5332-7365

e-mail:tmiph@section.metro.tokyo.jp

URL:idsc.tmiph.metro.tokyo.lg.jp/

全数掌握对象疾病 上报数量

| 类别 | 疾病 | Diseases | 东京 | | | | | 日本 | |
|--------|--|--|------|------|------|------|---------|-------|---------|
| | | | 第37周 | 第38周 | 第39周 | 第40周 | 2023年累计 | 第40周 | 2023年累计 |
| I | 埃博拉出血热 | Ebola hemorrhagic fever | | | | | | | |
| | 克里米亚 - 刚果出血热 | Crimean-Congo hemorrhagic fever | | | | | | | |
| | 天花 | Smallpox | | | | | | | |
| | 南美出血热 | South American hemorrhagic fever | | | | | | | |
| | 鼠疫 | Plague | | | | | | | |
| | 马尔堡出血热 | Marburg disease | | | | | | | |
| | 拉萨热 | Lassa fever | | | | | | | |
| II | 脊髓灰质炎 (小儿麻痹) | Acute poliomyelitis | | | | | | | |
| | 结核病 | Tuberculosis | 45 | 28 | 38 | 52 | 1,531 | 260 | 10,809 |
| | 白喉 | Diphtheria | | | | | | | |
| | 严重急性呼吸系统综合症 (SARS) | Severe Acute Respiratory Syndrome(SARS) | | | | | | | |
| | 中东呼吸综合症 | Middle East Respiratory Syndrome (MERS) | | | | | | | |
| | 禽流感 (H5N1) | Avian influenza H5N1 | | | | | | | |
| | 禽流感 (H7N9) | Avian influenza H7N9 | | | | | | | |
| III | 霍乱 | Cholera | | | | | 2 | | 2 |
| | 细菌性痢疾 | Shigellosis | | | 1 | | 7 | 2 | 30 |
| | 肠道出血性大肠杆菌感染症 | Enterohemorrhagic Escherichia coli infection | 15 | 5 | 10 | 15 | 337 | 73 | 2,910 |
| | 伤寒 | Typhoid fever | 1 | | 1 | 1 | 7 | 1 | 32 |
| | 副伤寒 | Paratyphoid fever | 1 | | 1 | | 3 | | 8 |
| | E型肝炎 | Hepatitis E | 3 | 1 | | 3 | 134 | 8 | 430 |
| IV | 西尼罗热 | West Nile fever | | | | | | | |
| | A型肝炎 | Hepatitis A | | 1 | 1 | | 8 | | 38 |
| | 棘球蚴病 | Echinococcosis | | | | | | | 11 |
| | Mpox | Mpox | 4 | 2 | 2 | 2 | 152 | 2 | 201 |
| | 黄热病 | Yellow fever | | | | | | | |
| | 鸚鵡热 | Psittacosis | | | | | | | 8 |
| | 鄂木斯克出血热 | Omsk hemorrhagic fever | | | | | | | |
| | 回归热 | Relapsing fever | | | | | | | 21 |
| | 奇赛纳森林病 (Kyasanur forest disease) | Kyasanur forest disease | | | | | | | |
| | Q型流感 | Q fever | | | | | | | |
| | 狂犬病 | Rabies | | | | | | | |
| | 球孢子菌病 | Coccidioidomycosis | | | | | | | 2 |
| | 兹卡病毒感染症 | Zika virus infection | | | | | | 1 | 1 |
| | 发热伴血小板减少综合症 | Severe Fever with Thrombocytopenia Syndrome | | | | | | 5 | 122 |
| | 肾综合症出血热 | Hemorrhagic fever with renal syndrome | | | | | | | |
| | 西部马脑炎 | Western equine encephalitis | | | | | | | |
| | 蜱媒脑炎 | Tick-borne encephalitis | | | | | | | |
| | 炭疽病 | Anthrax | | | | | | | |
| | 屈公病 | Chikungunya fever | | | 1 | | 1 | | 4 |
| | 恙虫病 | Scrub typhus(Tsutsugamushi disease) | | | | | 5 | 1 | 118 |
| | 登革热 | Dengue fever | | 3 | 3 | 1 | 36 | 4 | 118 |
| | 东部马脑炎 | Eastern equine encephalitis | | | | | | | |
| | 禽流感 (除H5N1、H7N9以外) | Avian influenza (excluding H5N1 and H7N9) | | | | | | | |
| | 立百病毒感染症 | Nipah virus infection | | | | | | | |
| | 日本红斑热 | Japanese spotted fever | | | | | 1 | 27 | 373 |
| | 日本脑炎 | Japanese encephalitis | | | | | | | 2 |
| | 汉坦病毒肺综合症 | Hantavirus pulmonary syndrome | | | | | | | |
| | 猴疱疹 | Herpes B virus infection | | | | | | | |
| | 马鼻疽 | Glanders | | | | | | | |
| | 布鲁氏杆菌病 | Brucellosis | | | | | | | 1 |
| | 委内瑞拉马脑炎 (Venezuelan equine encephalitis) | Venezuelan equine encephalitis | | | | | | | |
| | 亨德拉病毒感染症 | Hendra virus infection | | | | | | | |
| | 斑疹伤寒 | Epidemic typhus | | | | | | | |
| | 肉毒杆菌中毒 | Botulism | | | | | | | |
| | 疟疾 | Malaria | 2 | | 1 | | 7 | 1 | 22 |
| | 兔热病 | Tularemia | | | | | | | |
| | 莱姆病 | Lyme disease | | | | | 1 | | 26 |
| | 丽莎病毒感染症 | Lyssavirus infection(excluding rabies) | | | | | | | |
| | 裂谷热 | Rift valley fever | | | | | | | |
| | 类鼻疽 | Melioidosis | | | | | | | |
| 退伍军人症 | Legionellosis | 5 | 8 | 5 | 6 | 134 | 56 | 1,753 | |
| 钩端螺旋体病 | Leptospirosis | | | 2 | | 4 | 1 | 33 | |
| 落基山斑疹热 | Rocky mountain spotted fever | | | | | | | | |

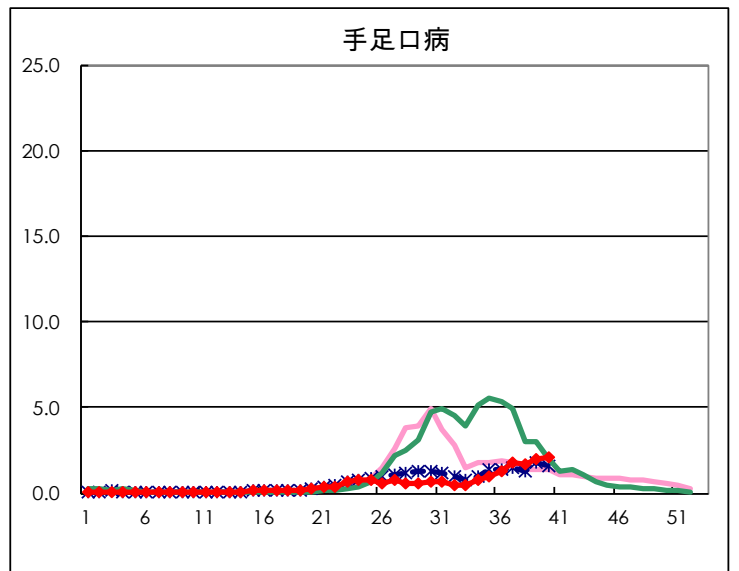
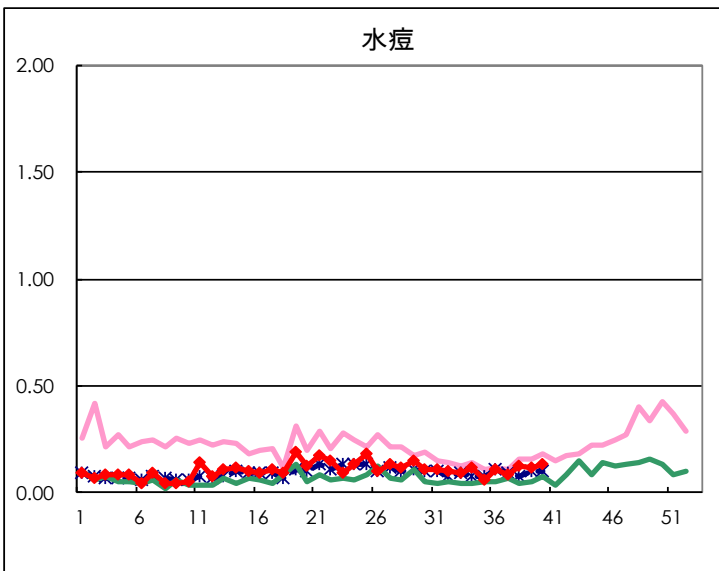
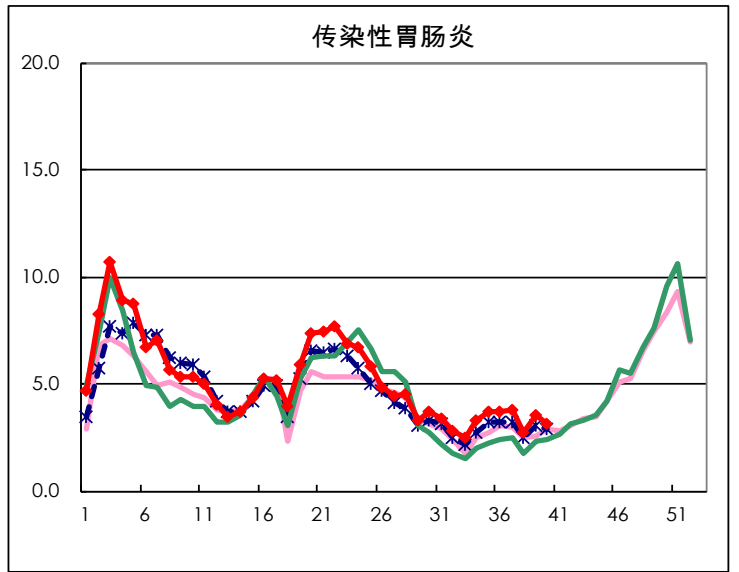
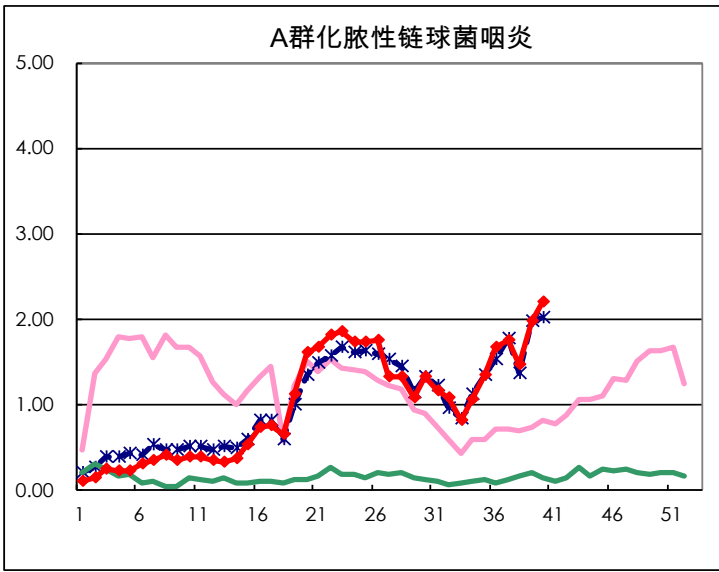
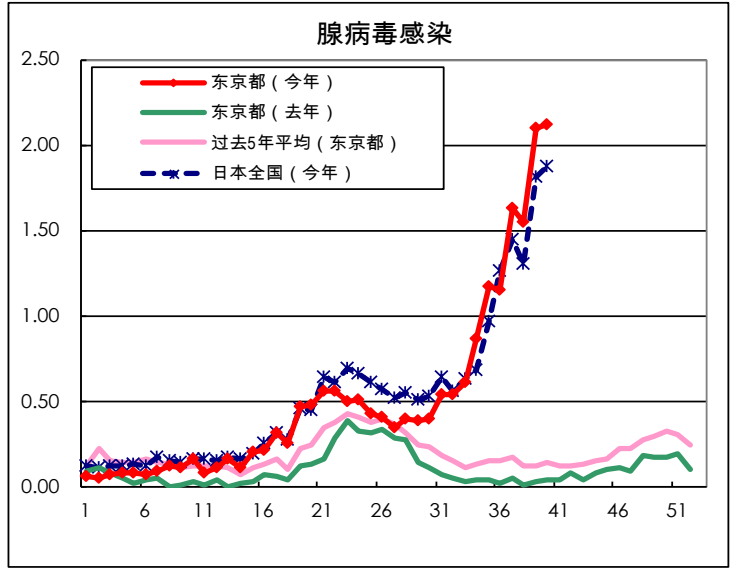
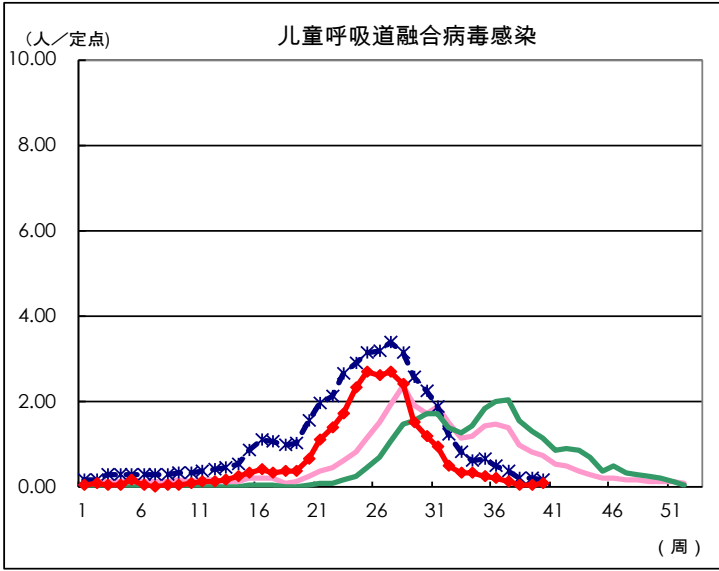
| 类别 | 疾病 | Diseases | 东京 | | | | | 日本 | |
|------------|--|---|------|------|------|------|---------|------|---------|
| | | | 第37周 | 第38周 | 第39周 | 第40周 | 2023年累计 | 第40周 | 2023年累计 |
| V | 阿米巴痢疾 | Amebiasis | 1 | 1 | 4 | 5 | 77 | 7 | 395 |
| | 病毒性肝炎 (除A型、E型以外) | Viral hepatitis(excluding hepatitis A and E) | | 1 | | | 38 | 1 | 192 |
| | CRE infection | CRE infection | 4 | 12 | 5 | 5 | 167 | 34 | 1,538 |
| | Acute Flaccid Paralysis (excluding Acute poliomyelitis) | Acute Flaccid Paralysis (excluding Acute poliomyelitis) | | | 1 | | 6 | 1 | 46 |
| | 急性脑炎 | Acute encephalitis(excluding JE and WNE) | 1 | 1 | | 1 | 28 | 10 | 430 |
| | 隐孢子虫症 | Cryptosporidiosis | | | | | 1 | 1 | 9 |
| | 库贾氏病 | Creutzfeldt-Jakob disease | 1 | | | | 16 | 1 | 121 |
| | 酿脓链球菌 (Streptococcus pyogenes) 感染症 | Severe invasive streptococcal infections(TLS) | 1 | 1 | 3 | 4 | 91 | 10 | 631 |
| | 后天免疫缺陷综合症 | Acquired immunodeficiency syndrome (AIDS) | 3 | 5 | 5 | 5 | 232 | 5 | 709 |
| | 贾第虫病 | Giardiasis | | | | | 9 | | 34 |
| | 侵袭性嗜血杆菌感染症 | Invasive Haemophilus influenzae disease | 1 | 2 | 2 | | 38 | 9 | 432 |
| | 侵袭性脑膜炎感染症 | Invasive meningococcal disease | | | 1 | | 2 | | 13 |
| | 侵袭性肺炎链球菌感染症 | Invasive pneumococcal disease | 6 | 4 | 1 | 2 | 149 | 15 | 1,332 |
| | 水痘 (仅限住院病例) | Varicella (limited to hospitalized case) | 1 | | | 2 | 50 | 6 | 286 |
| | 先天性德国麻疹综合症 | Congenital rubella syndrome | | | | | | | |
| | 梅毒 | Syphilis | 73 | 61 | 56 | 80 | 2,859 | 162 | 11,546 |
| | 播散性隐球菌症 | Disseminated cryptococcosis | | | 1 | | 14 | 1 | 130 |
| | 破伤风 | Tetanus | | | 1 | | 5 | 3 | 81 |
| | 万古霉素耐药金黄色葡萄球菌 (Vancomycin-resistant Staphylococcus aureus, VRSA) 感染症 | Vancomycin-resistant S. aureus infection | | | | | | | |
| | 万古霉素抗药性肠球菌 (Vancomycin-Resistant Enterococci, VRE) 感染症 | Vancomycin-resistant Enterococcus infection | 1 | 1 | | | 9 | 3 | 96 |
| 百日咳 | Pertussis | | | 4 | 1 | 95 | 26 | 728 | |
| 德国麻疹 | Rubella | | | | | 4 | | 11 | |
| 麻疹 | Measles | | | | | 7 | | 25 | |
| 抗药性不动杆菌感染症 | MDRA infection | | | | | 1 | | 11 | |

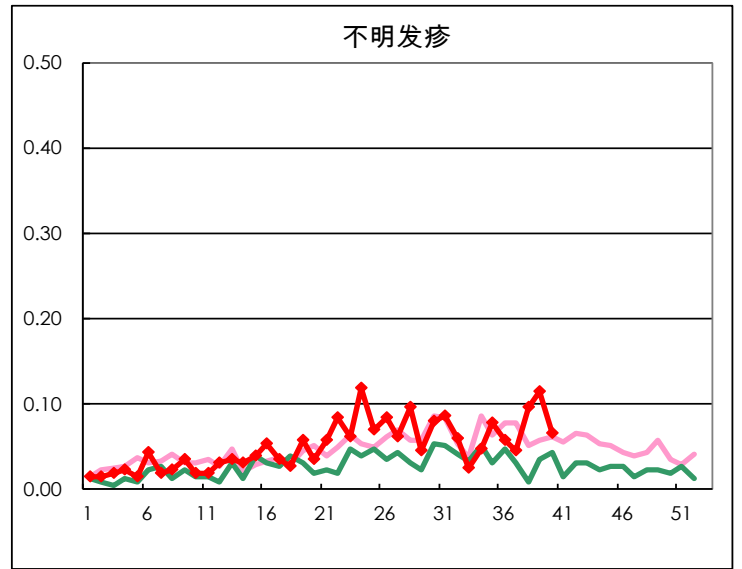
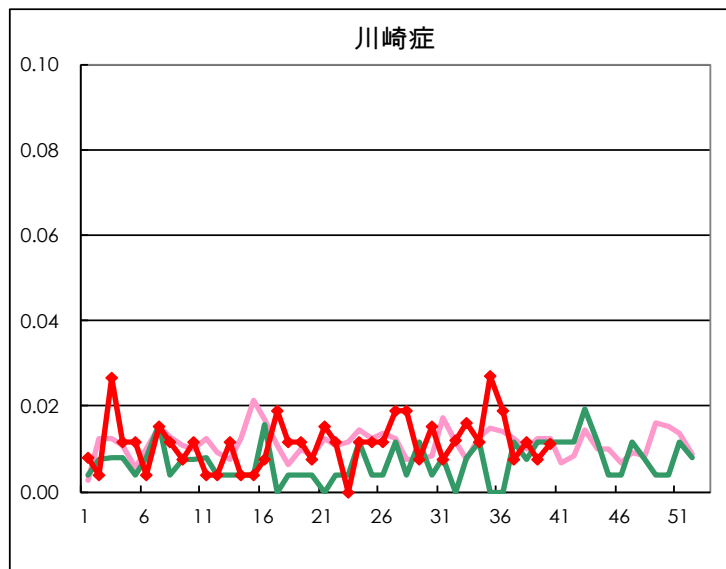
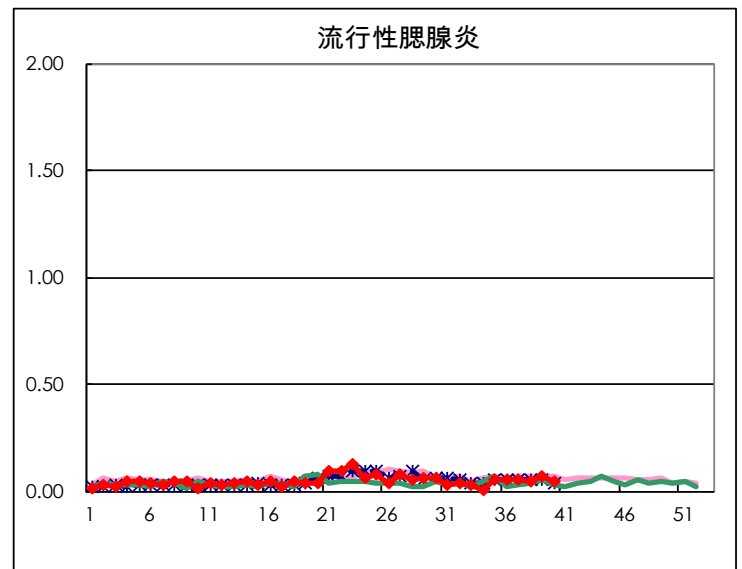
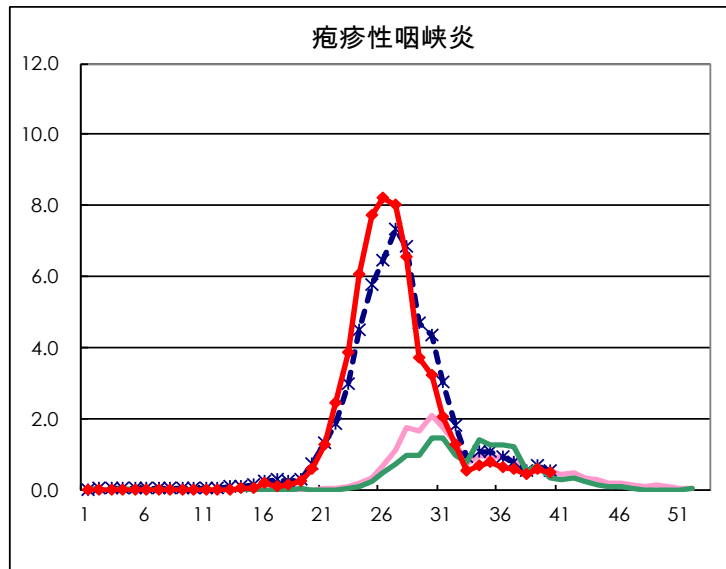
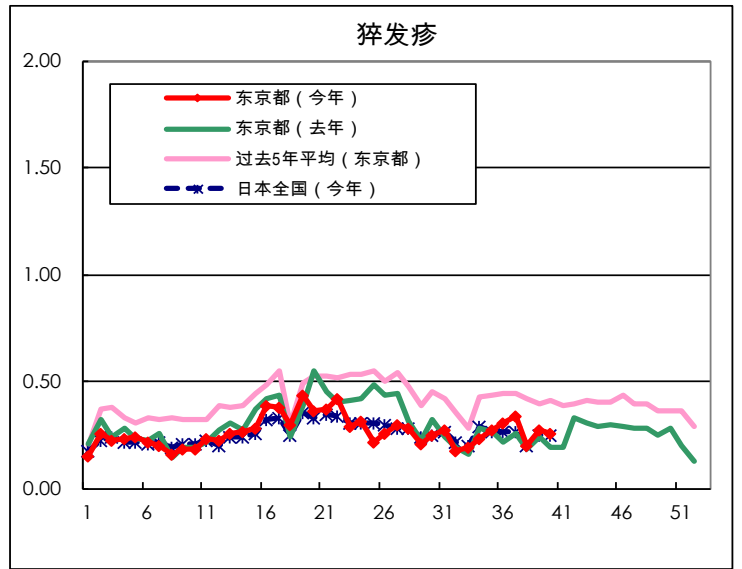
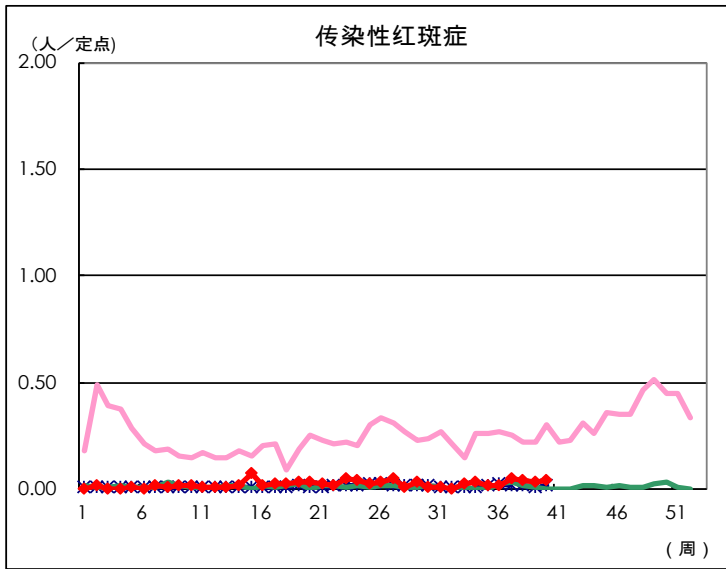
定点掌握对象疾病报告数量

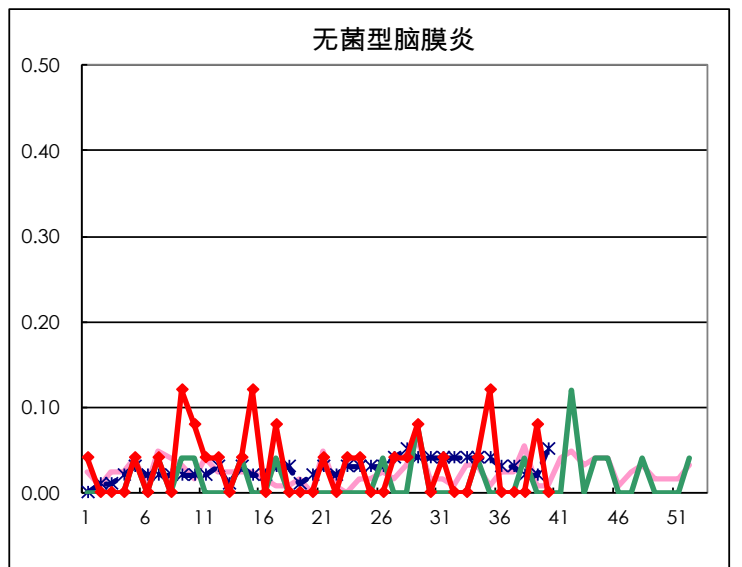
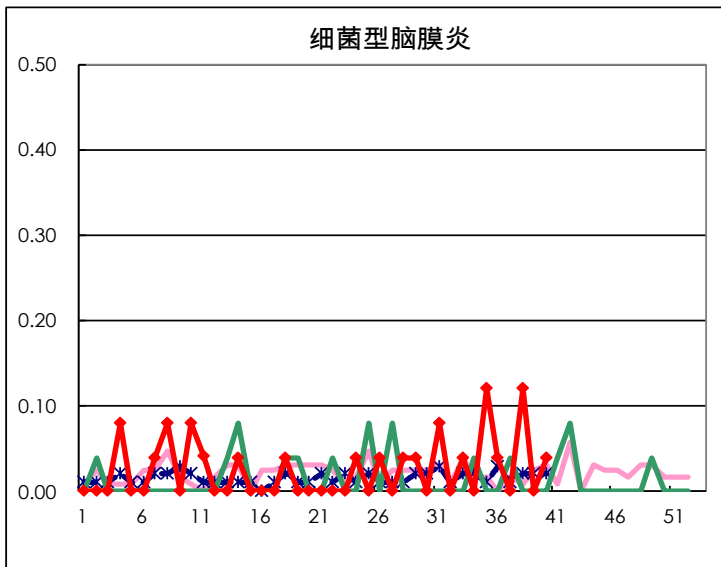
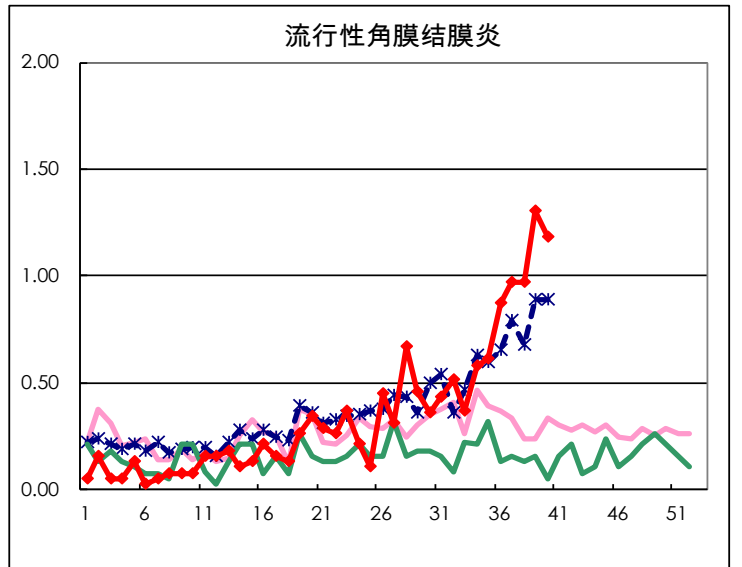
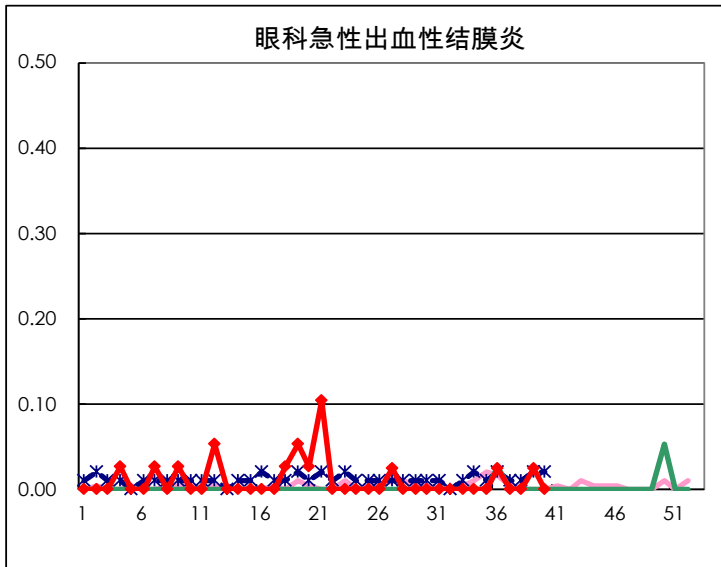
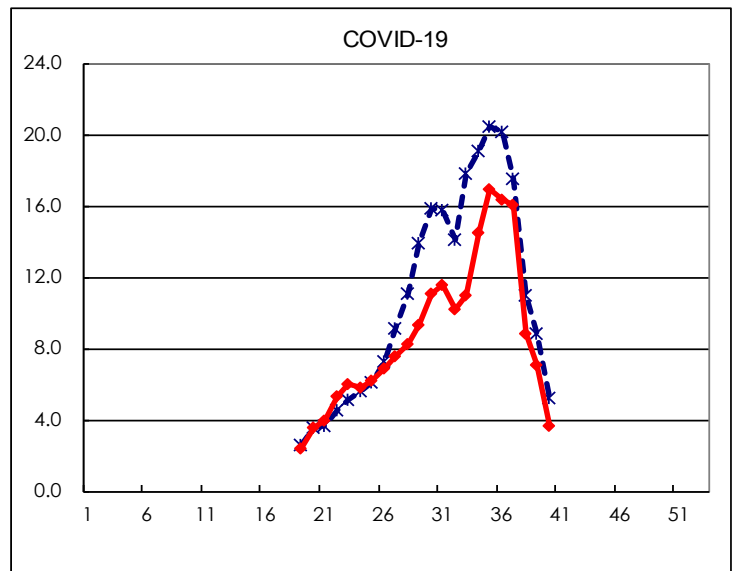
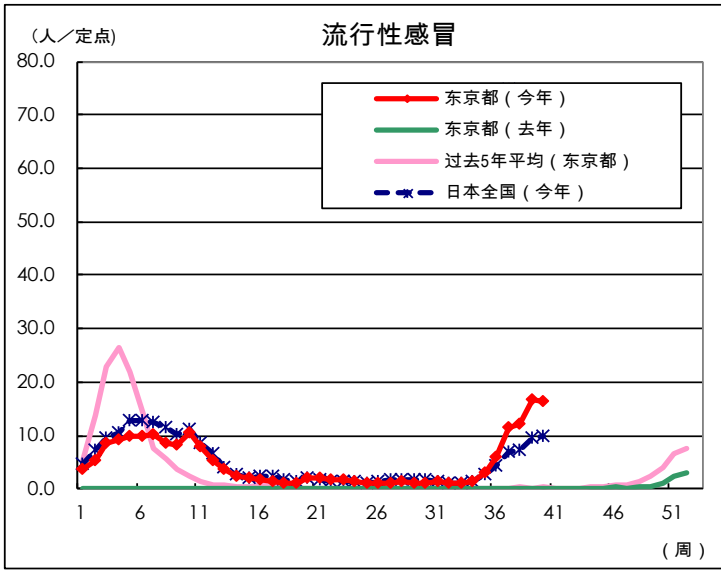
| 疾病 | Diseases | 东京 | | | | |
|--------------------------------------|--|-------|-------|-------|-------|-------|
| | | 第37周 | 第38周 | 第39周 | 第40周 | 每哨兵 |
| 儿童呼吸道融合病毒感染 | Respiratory syncytial virus infection | 41 | 14 | 17 | 20 | 0.08 |
| 腺病毒感染 | Pharyngoconjunctival fever | 426 | 403 | 549 | 556 | 2.11 |
| A群化脓性链球菌咽炎 | Group A streptococcal pharyngitis | 462 | 383 | 521 | 580 | 2.21 |
| 传染性胃肠炎 | Infectious gastroenteritis | 990 | 717 | 934 | 822 | 3.13 |
| 水痘 | Chickenpox | 22 | 33 | 30 | 36 | 0.14 |
| 手足口病 | Hand, foot, and mouth disease | 469 | 429 | 517 | 546 | 2.08 |
| 传染性红斑症 | Erythema infectiosum | 13 | 11 | 9 | 12 | 0.05 |
| 猝发疹 | Exanthem subitum | 90 | 52 | 73 | 69 | 0.26 |
| 疱疹性咽峡炎 | Herpangina | 156 | 122 | 153 | 126 | 0.48 |
| 流行性腮腺炎 | Mumps | 13 | 11 | 18 | 12 | 0.05 |
| 川崎症 | Kawasaki disease | 2 | 3 | 2 | 3 | 0.01 |
| 不明发疹 | Cold with exanthems | 12 | 25 | 30 | 17 | 0.06 |
| 流行性感冒 | Influenza | 4,742 | 5,060 | 6,913 | 6,873 | 16.44 |
| COVID-19 | COVID-19 | 6,688 | 3,688 | 2,951 | 1,514 | 3.62 |
| 眼科急性出血性结膜炎 | Acute hemorrhagic conjunctivitis | | | 1 | | |
| 流行性角膜炎 | Epidemic keratoconjunctivitis | 38 | 38 | 51 | 46 | 1.18 |
| 细菌型脑膜炎 | Bacterial meningitis | | 3 | | 1 | 0.04 |
| 无菌型脑膜炎 | Aseptic meningitis | | | 2 | | |
| 霉菌肺炎 | Mycoplasma pneumonia | 1 | 1 | | 1 | 0.04 |
| 披衣菌肺炎 (除鹦鹉病外) | Chlamydial pneumonia (excluding psittacosis) | | | 1 | | |
| 感染性肠胃炎 (轮状病毒) | Infectious gastroenteritis (only by Rotavirus) | | | | | |
| 流行性感冒住院 | Influenza-Associated Hospitalizations | 13 | 24 | 28 | 31 | 1.24 |
| COVID-19-Associated Hospitalizations | COVID-19-Associated Hospitalizations | | | 145 | 97 | 3.88 |

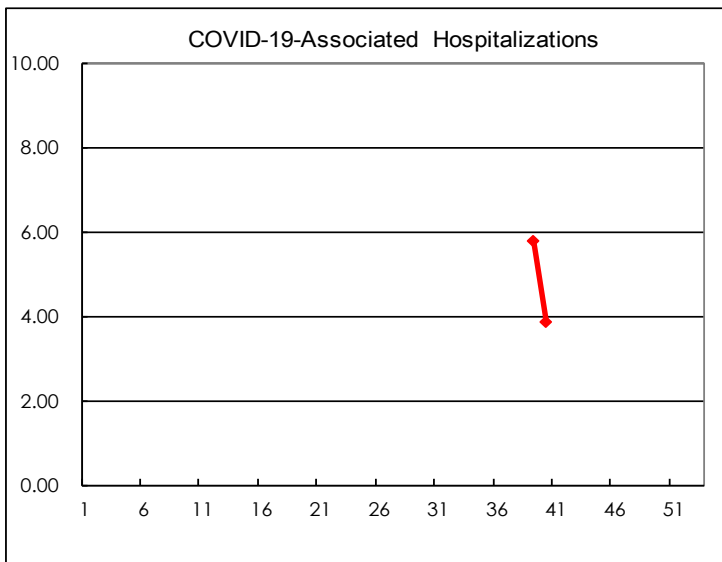
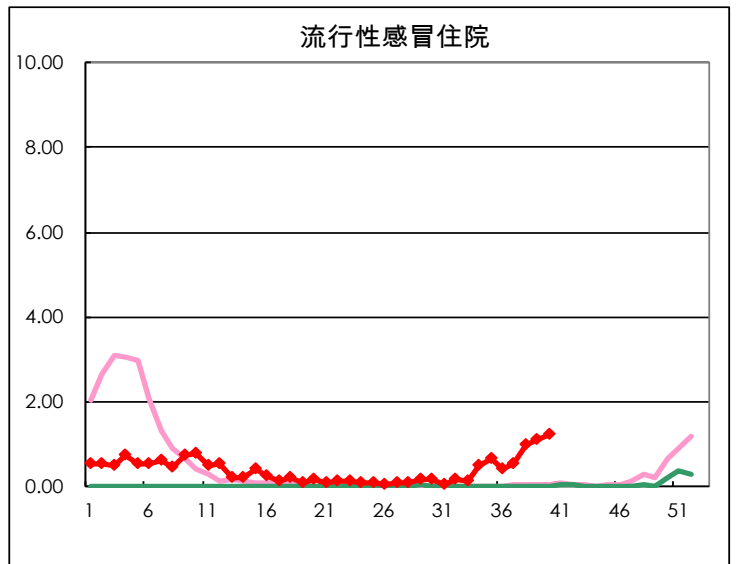
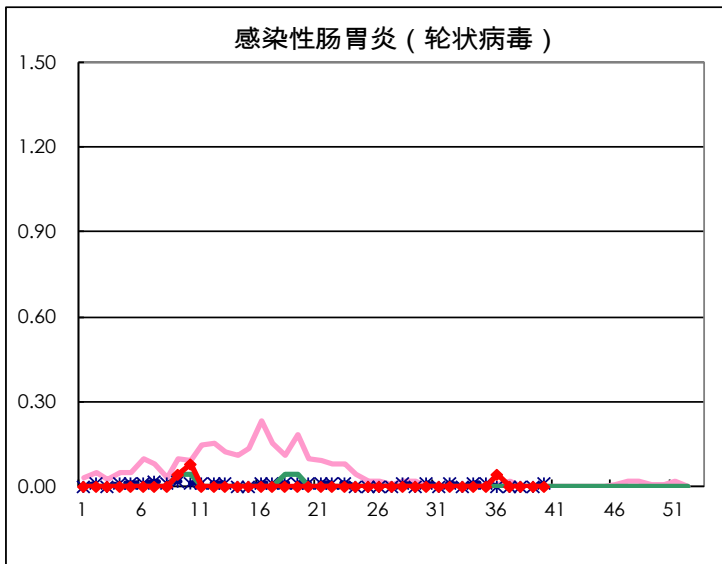
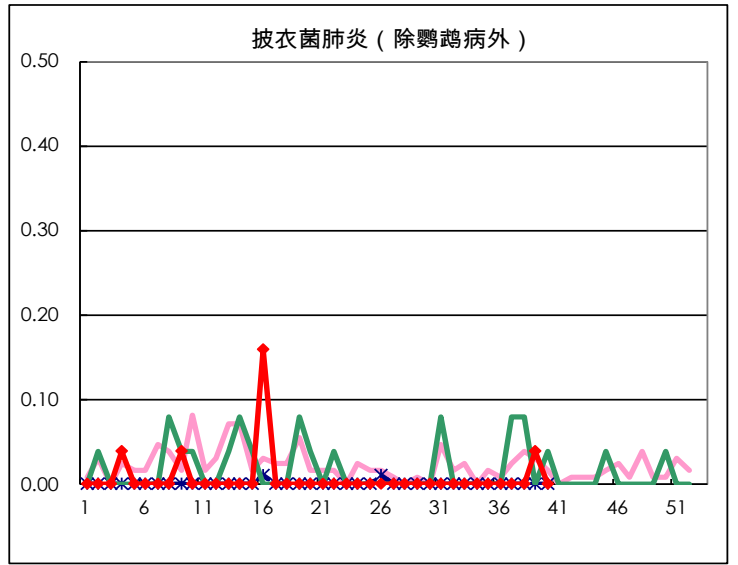
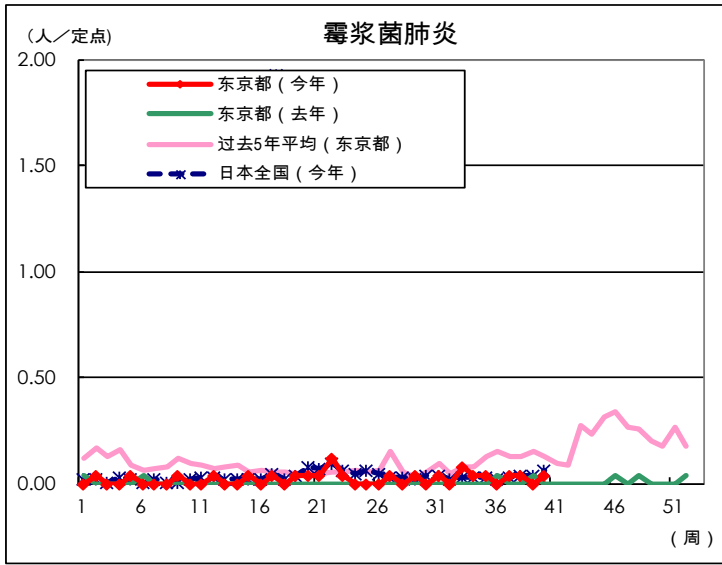
(空白为0)

定点掌握对象疾病在每定点医疗机构的报告数量









| 每周报告的哨点设施数量 | | |
|-------------------|----------|----------|
| 哨点的类型 | 定点医疗机构数量 | 报告医疗机构数量 |
| 小儿科的 | 264 | 263 |
| 流行性感冒 COVID-19 | 419 | 418 |
| 眼科 | 39 | 39 |
| 专门设计的 | 25 | 25 |