

---

INFECTIOUS DISEASES WEEKLY REPORT

# TOKYO iDWR

Tokyo Metropolitan Infectious Disease Surveillance Center

**19 October 2023 / Number 41**  
**( 10/9 ~ 10/15 )**

## Surveillance System in Tokyo, Japan

The infectious diseases which all physicians must report  
All physicians must report to health centers the incidence of the diseases which are shown at page one. Health centers electronically report the individual cases to Tokyo Metropolitan Infectious Disease Surveillance Center.

The infectious diseases required to be reported by the sentinels  
The numbers of patients who visit the sentinel clinics or hospitals during a week are reported to health centers in Tokyo. And they electronically report the numbers to Tokyo Metropolitan Infectious Disease Surveillance Center. We have about 500 sentinel clinics and hospitals in Tokyo.

Tokyo Metropolitan Institute of Public Health

TEL:81-3-3363-3213 FAX:81-3-5332-7365

e-mail:tmiph@section.metro.tokyo.jp

URL:idsc.tmiph.metro.tokyo.lg.jp/

---

Number of patients with the diseases which all physicians must report

Category	Diseases	Tokyo					Japan	
		38th	39th	40th	41st	Cum 2023	41st	Cum 2023
I	Ebola hemorrhagic fever							
	Crimean-Congo hemorrhagic fever							
	Smallpox							
	South American hemorrhagic fever							
	Plague							
	Marburg disease							
	Lassa fever							
II	Acute poliomyelitis							
	Tuberculosis	28	38	55	32	1,568	179	11,064
	Diphtheria							
	Severe Acute Respiratory Syndrome(SARS)							
	Middle East Respiratory Syndrome (MERS)							
	Avian influenza H5N1							
	Avian influenza H7N9							
III	Cholera					2		2
	Shigellosis		1			7	1	31
	Enterohemorrhagic Escherichia coli infection	5	10	16	15	353	89	3,007
	Typhoid fever		1	1	1	8	2	34
	Paratyphoid fever		1			3		8
IV	Hepatitis E	1		3		134	7	440
	West Nile fever							
	Hepatitis A	1	1			8	1	39
	Echinococcosis						1	12
	Mpox	2	2	2	1	153	2	203
	Yellow fever							
	Psittacosis							8
	Omsk hemorrhagic fever							
	Relapsing fever							21
	Kyasanur forest disease							
	Q fever							
	Rabies							
	Coccidioidomycosis							2
	Zika virus infection							1
	Severe Fever with Thrombocytopenia Syndrome							123
	Hemorrhagic fever with renal syndrome							
	Western equine encephalitis							
	Tick-borne encephalitis							
	Anthrax							
	Chikungunya fever		1			1	1	5
	Scrub typhus(Tsutsugamushi disease)					5	1	119
	Dengue fever	3	3	1		36	2	120
	Eastern equine encephalitis							
	Avian influenza (excluding H5N1 and H7N9)							
	Nipah virus infection							
	Japanese spotted fever					1	18	396
	Japanese encephalitis							2
	Hantavirus pulmonary syndrome							
	Herpes B virus infection							
	Glanders							
	Brucellosis							1
	Venezuelan equine encephalitis							
	Hendra virus infection							
Epidemic typhus								
Botulism								
Malaria		1		2	9	2	24	
Tularemia								
Lyme disease					1	1	27	
Lyssavirus infection(excluding rabies)								
Rift valley fever								
Melioidosis								
Legionellosis	8	5	6	1	135	40	1,805	
Leptospirosis		2			4	3	37	
Rocky mountain spotted fever								

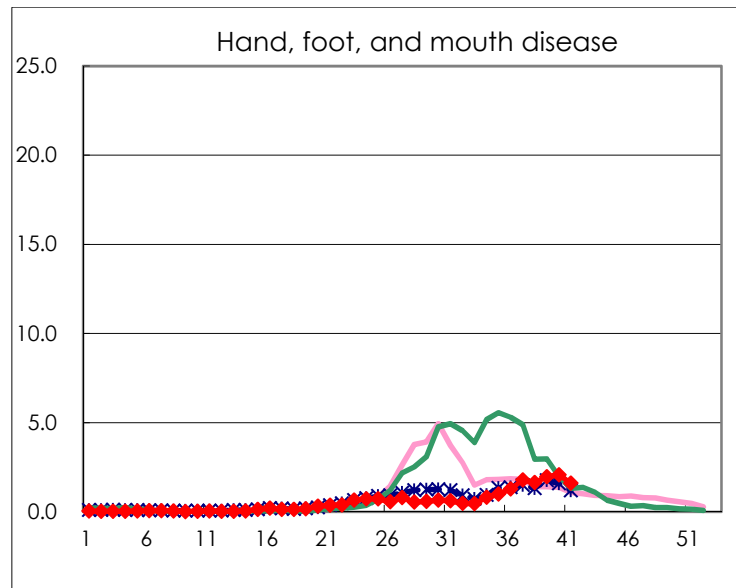
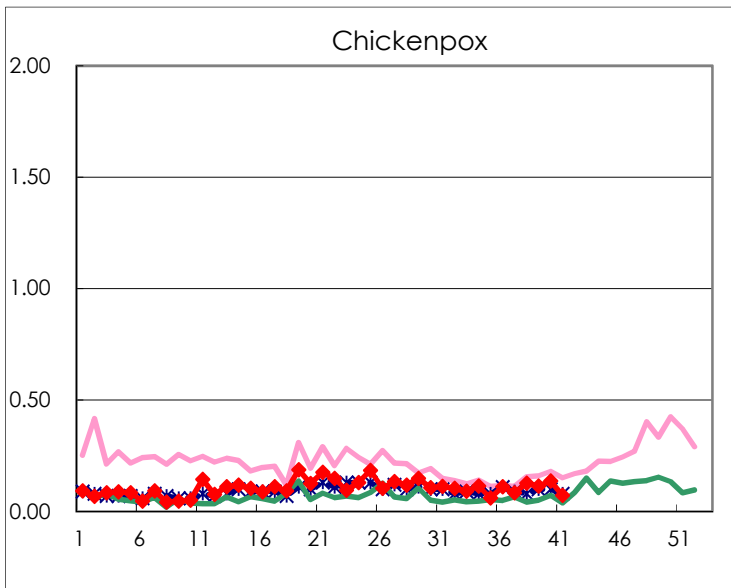
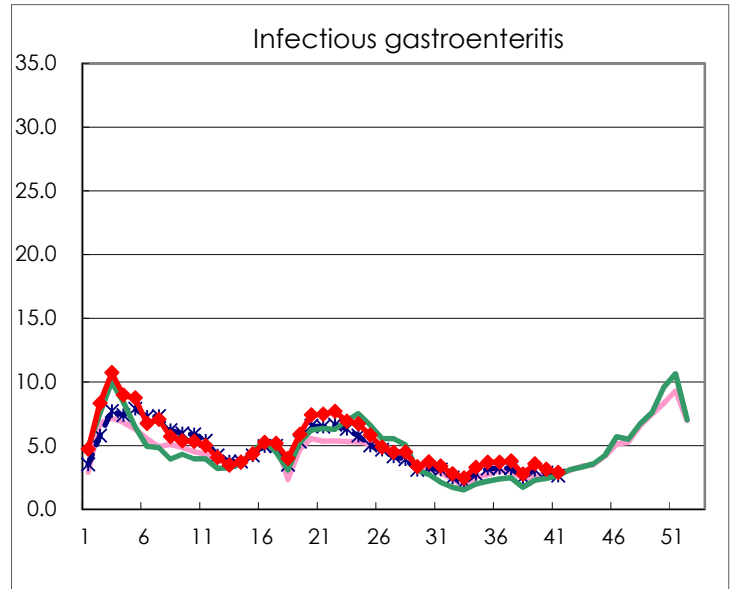
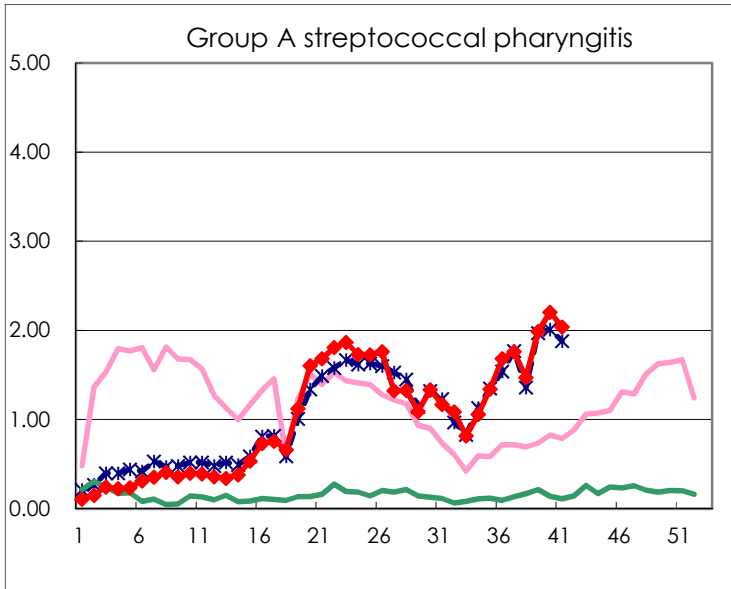
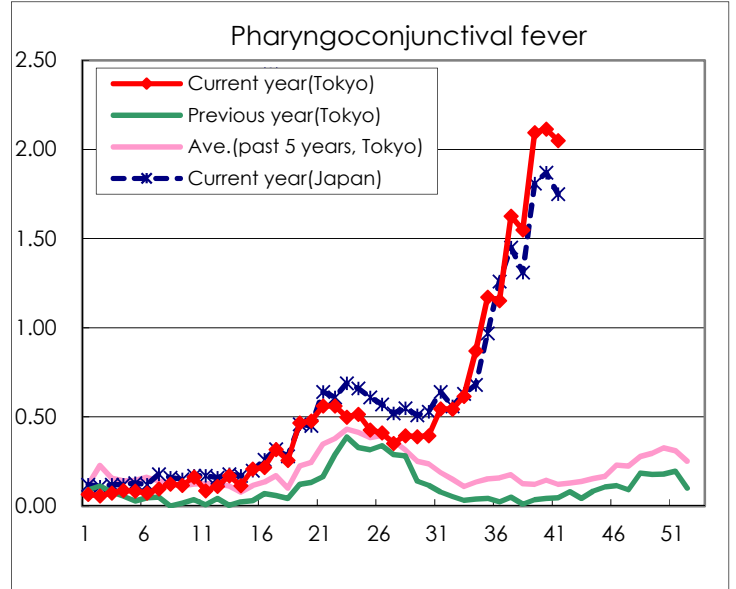
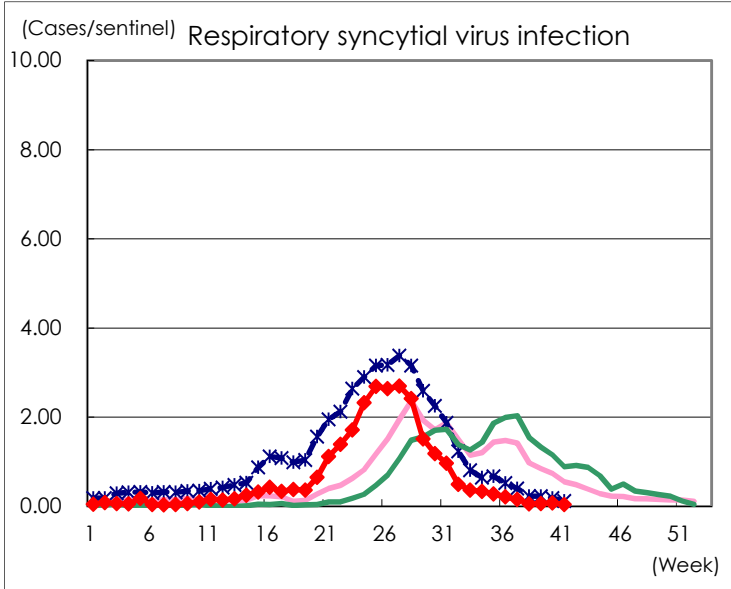
Category	Diseases	Tokyo					Japan	
		38th	39th	40th	41st	Cum 2023	41st	Cum 2023
V	Amebiasis	1	4	5		77	1	397
	Viral hepatitis(excluding hepatitis A and E)	1				38		192
	CRE infection	12	5	6	2	170	37	1,591
	Acute Flaccid Paralysis (excluding Acute poliomyelitis)		1			6		47
	Acute encephalitis(excluding JE and WNE)	1		1	1	29	3	440
	Cryptosporidiosis					1		9
	Creutzfeldt-Jakob disease					16	1	123
	Severe invasive streptococcal infections(TSLS)	1	4	5	2	95	10	653
	Acquired immunodeficiency syndrome (AIDS)	5	5	5	3	235	5	719
	Giardiasis				1	10	1	35
	Invasive <i>Haemophilus influenzae</i> disease	2	2		3	41	9	446
	Invasive meningococcal disease		1			2		13
	Invasive pneumococcal disease	4	1	2	1	150	18	1,357
	Varicella (limited to hospitalized case)			2		50	4	293
	Congenital rubella syndrome							
	Syphilis	61	56	86	79	2,944	191	11,852
	Disseminated cryptococcosis		1			14	3	133
	Tetanus		1			5	1	83
	Vancomycin-resistant <i>S. aureus</i> infection							
	Vancomycin-resistant <i>Enterococcus</i> infection	1				9	1	98
	Pertussis		4	1	2	97	20	751
Rubella					4		11	
Measles					7		25	
MDRA infection			1		2		12	

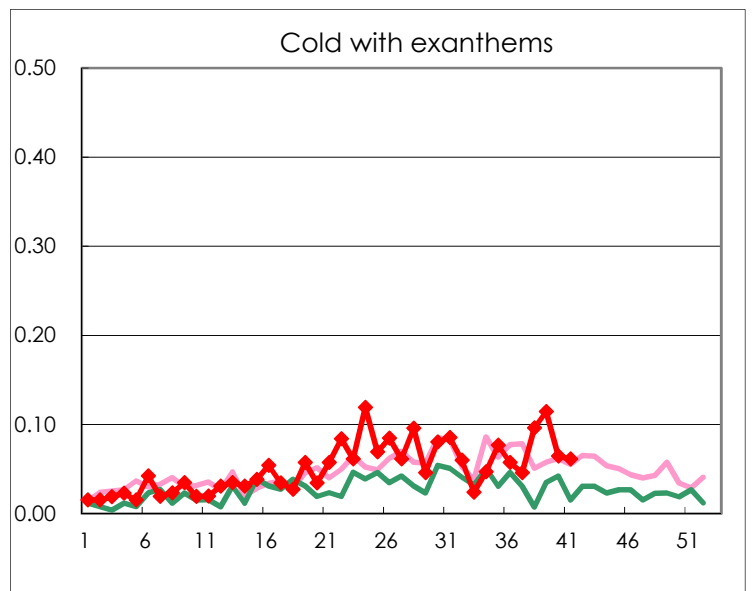
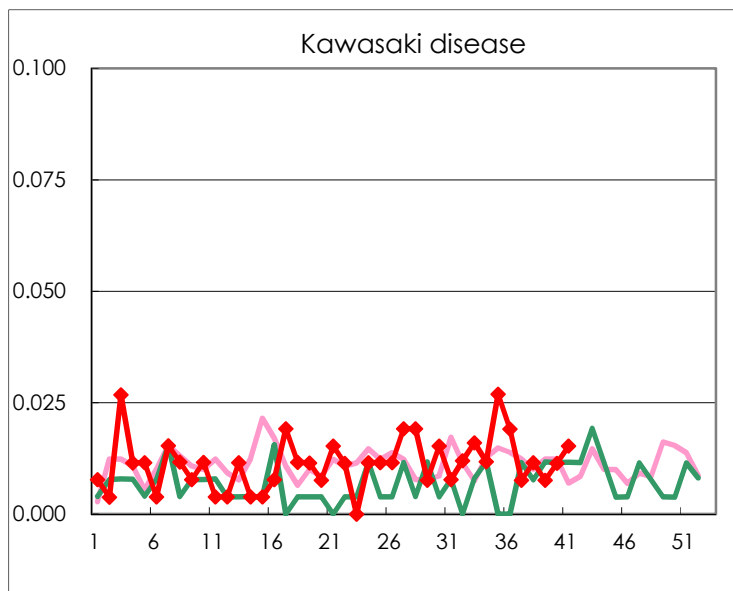
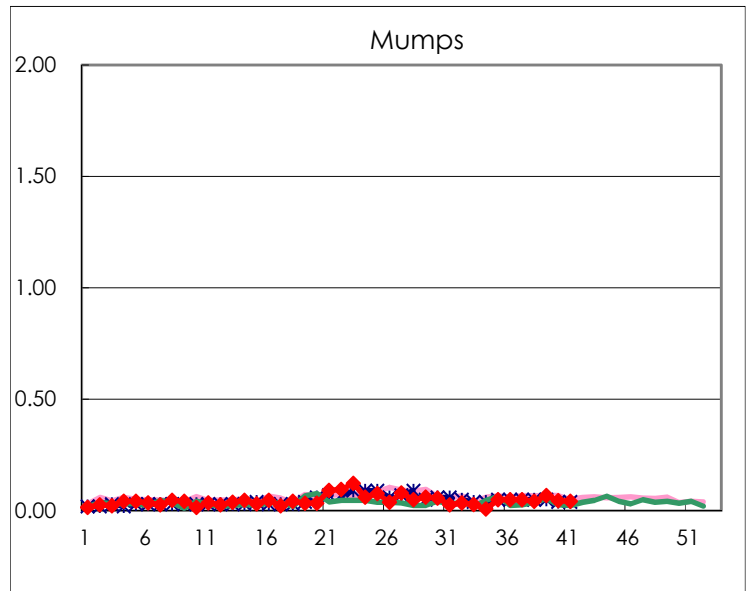
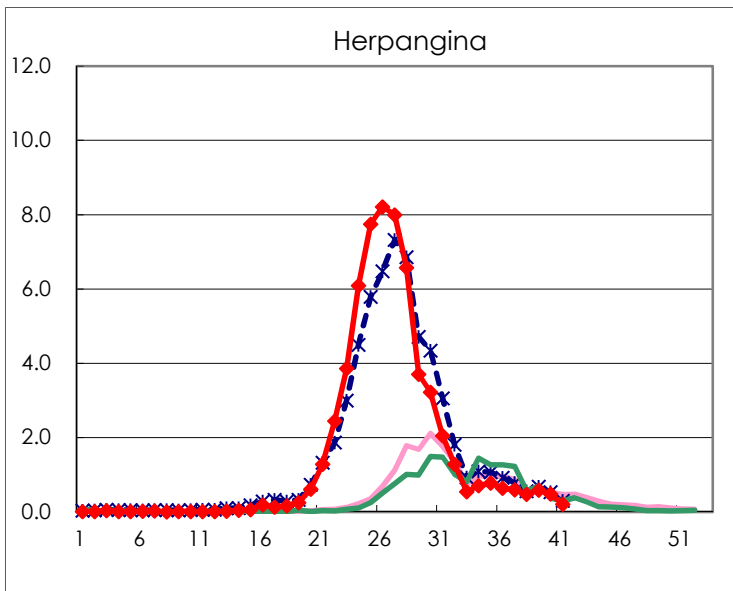
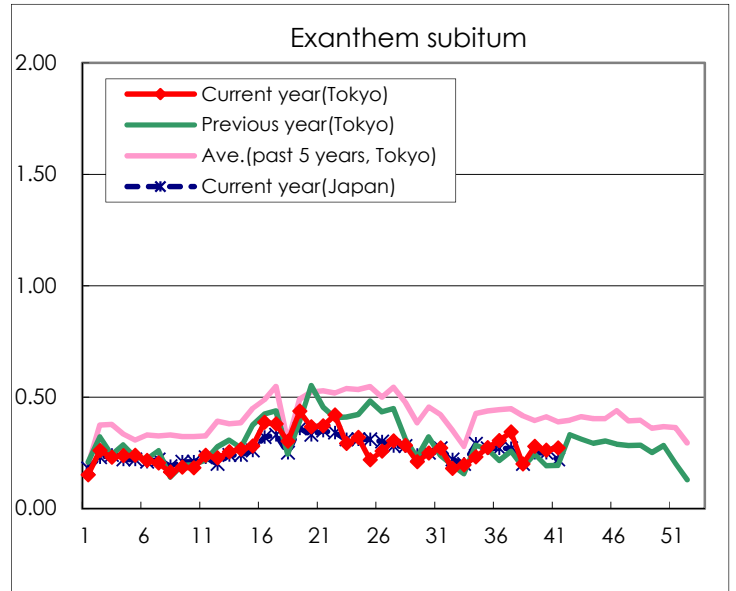
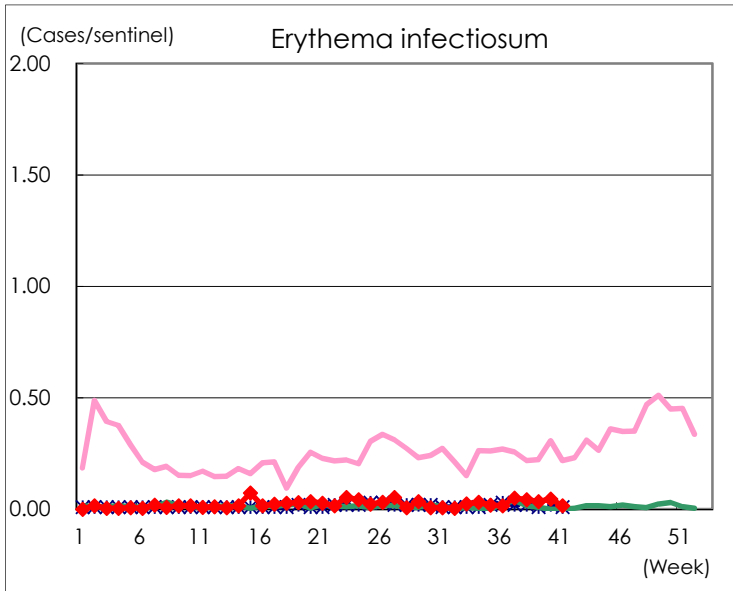
Number of patients with the diseases to be reported  
by the designated clinics and hospitals

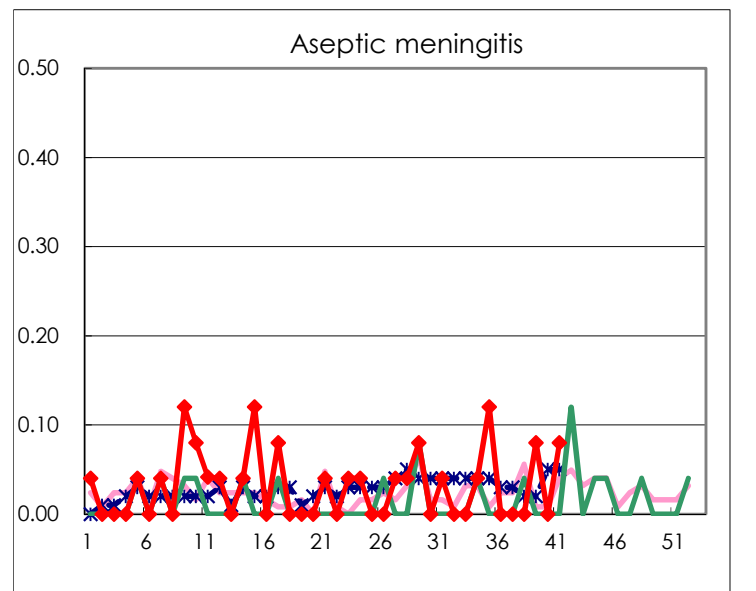
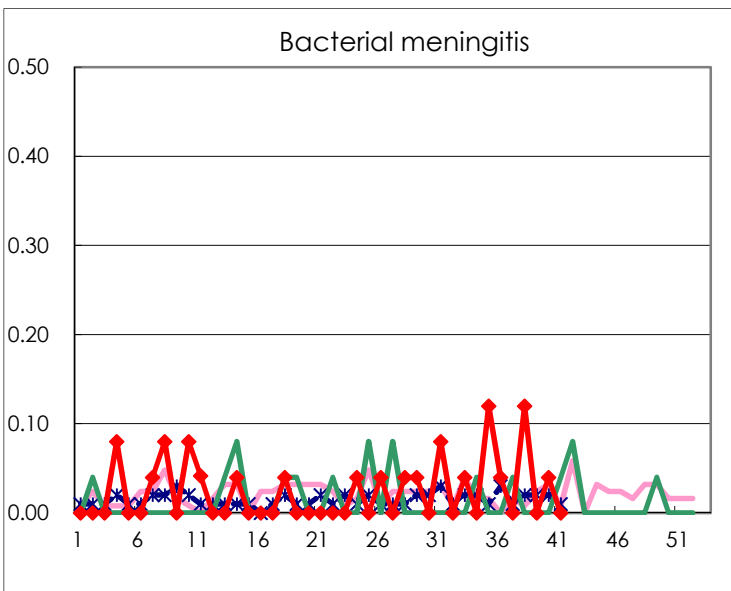
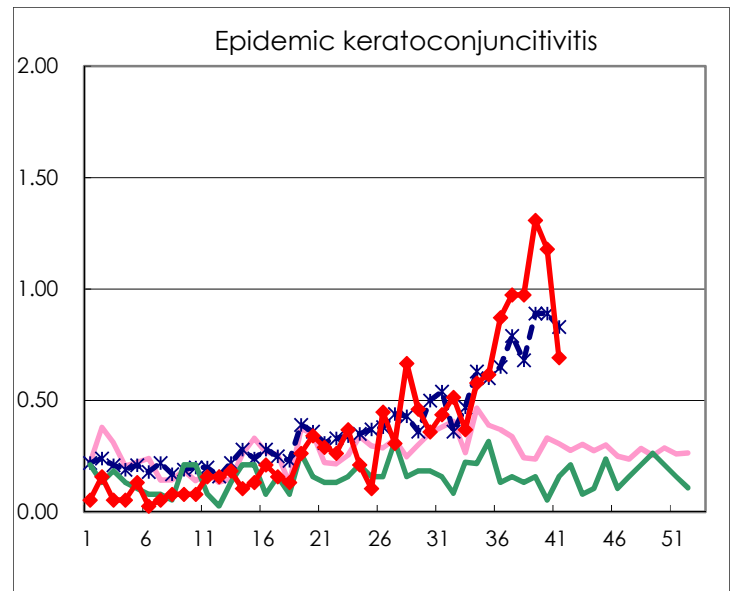
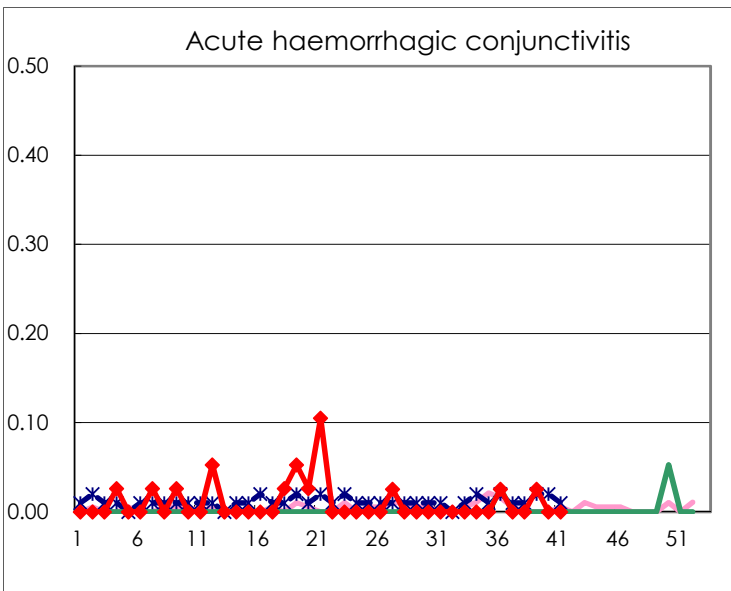
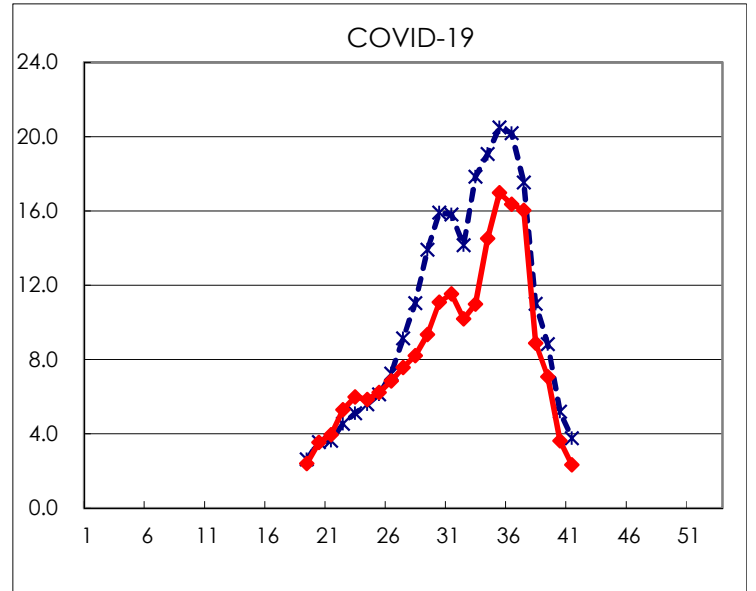
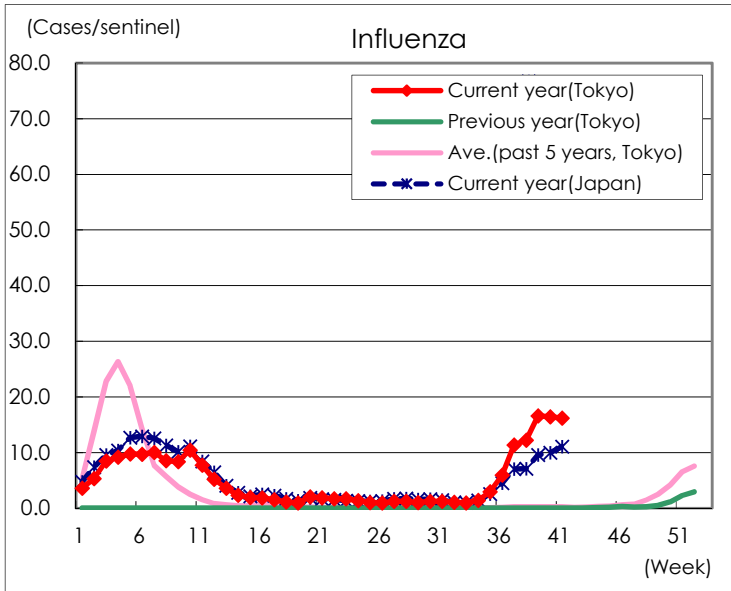
Diseases	Tokyo				
	38th	39th	40th	41st	/sentinel
Respiratory syncytial virus infection	14	17	20	11	0.04
Pharyngoconjunctival fever	403	549	556	535	2.05
Group A streptococcal pharyngitis	383	521	580	532	2.04
Infectious gastroenteritis	717	934	822	749	2.87
Chickenpox	33	30	36	19	0.07
Hand, foot, and mouth disease	429	517	546	417	1.60
Erythema infectiosum	11	9	12	4	0.02
Exanthem subitum	52	73	69	71	0.27
Herpangina	122	153	126	54	0.21
Mumps	11	18	12	11	0.04
Kawasaki disease	3	2	3	4	0.02
Cold with exanthems	25	30	17	16	0.06
Influenza	5,060	6,913	6,873	6,733	16.19
COVID-19	3,688	2,951	1,514	971	2.33
Acute hemorrhagic conjunctivitis		1			
Epidemic keratoconjunctivitis	38	51	46	27	0.69
Bacterial meningitis	3		1		
Aseptic meningitis		2		2	0.08
Mycoplasma pneumonia	1		1	1	0.04
Chlamydial pneumonia (excluding psittacosis)		1			
Infectious gastroenteritis (only by Rotavirus)					
Influenza-Associated Hospitalizations	25	28	31	31	1.24
COVID-19-Associated Hospitalizations		145	97	62	2.48

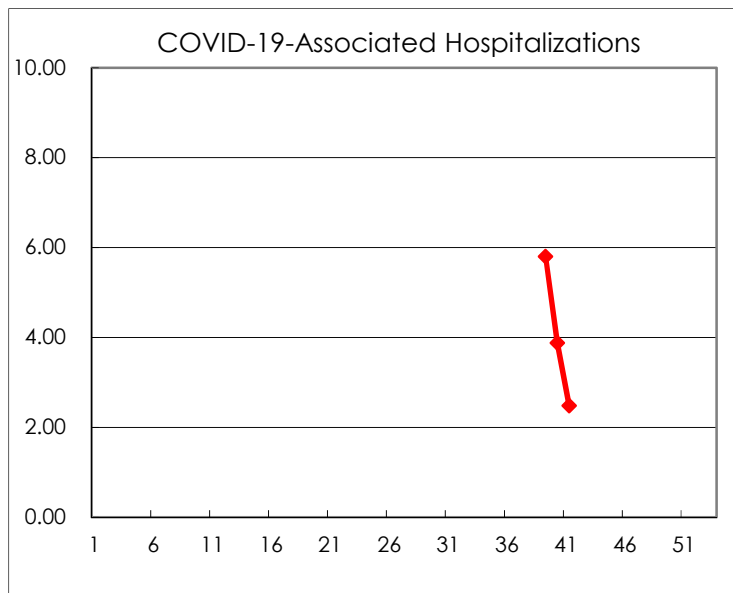
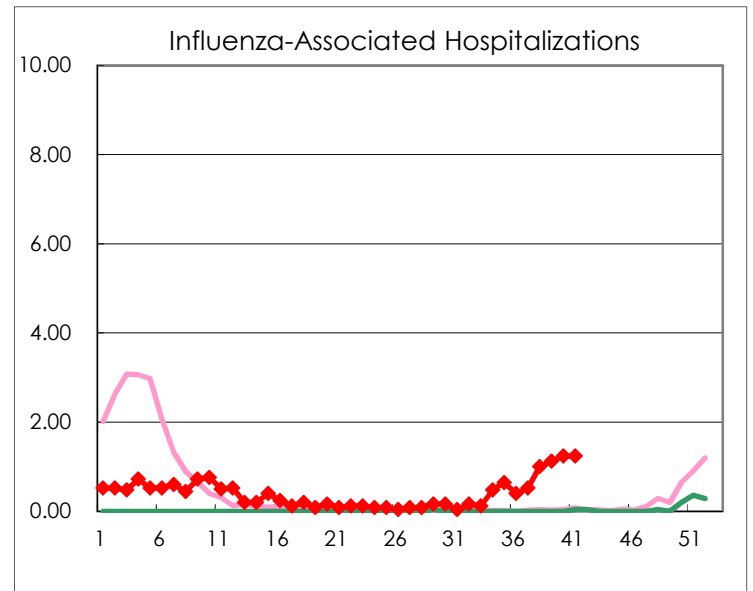
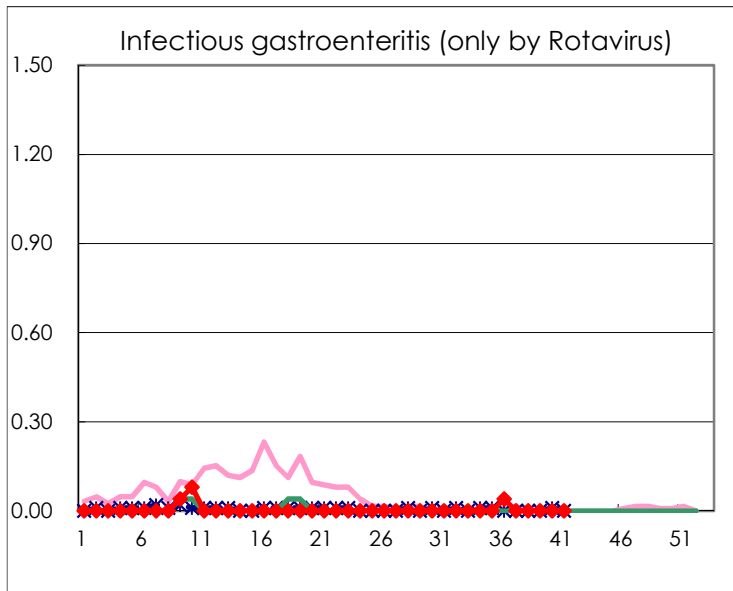
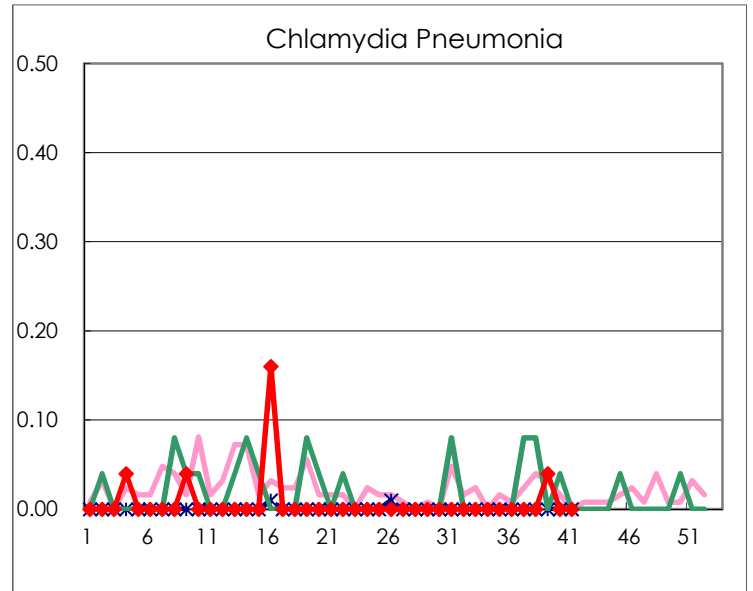
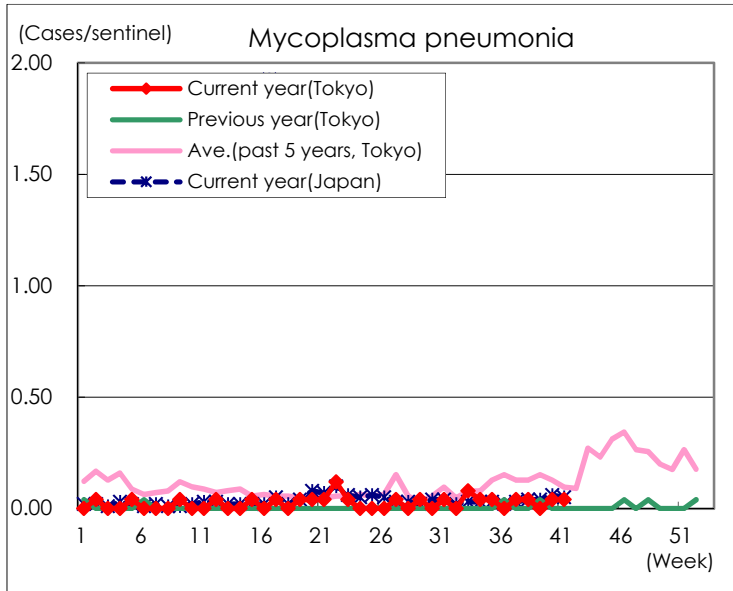
( Blank means 0. )

# Disease Trend Graph (weekly reported cases per sentinel in comparison)









Number of sentinel facilities for weekly reporting		
Types of sentinels	Number of sentinels	Sentinels having reported
Pediatric	264	261
Influenza COVID-19	419	416
Ophthalmic	39	39
Specialty-designated	25	25