
INFECTIOUS DISEASES WEEKLY REPORT

TOKYO IDWR

Tokyo Metropolitan Infectious Disease Surveillance Center

9 November 2023 / Number 44 (10/30 ~ 11/5)

Surveillance System in Tokyo, Japan

The infectious diseases which all physicians must report
All physicians must report to health centers the incidence of the diseases which are shown at page one. Health centers electronically report the individual cases to Tokyo Metropolitan Infectious Disease Surveillance Center.

The infectious diseases required to be reported by the sentinels
The numbers of patients who visit the sentinel clinics or hospitals during a week are reported to health centers in Tokyo. And they electronically report the numbers to Tokyo Metropolitan Infectious Disease Surveillance Center. We have about 500 sentinel clinics and hospitals in Tokyo.

Tokyo Metropolitan Institute of Public Health

TEL:81-3-3363-3213 FAX:81-3-5332-7365

e-mail:tmiph@section.metro.tokyo.jp

URL:idsc.tmiph.metro.tokyo.lg.jp/

Number of patients with the diseases which all physicians must report

Category	Diseases	Tokyo					Japan	
		41st	42nd	43rd	44th	Cum 2023	44th	Cum 2023
I	Ebola hemorrhagic fever							
	Crimean-Congo hemorrhagic fever							
	Smallpox							
	South American hemorrhagic fever							
	Plague							
	Marburg disease							
	Lassa fever							
II	Acute poliomyelitis							
	Tuberculosis	34	45	39	38	1,693	206	12,081
	Diphtheria							
	Severe Acute Respiratory Syndrome(SARS)							
	Middle East Respiratory Syndrome (MERS)							
	Avian influenza H5N1							
	Avian influenza H7N9							
III	Cholera					2		2
	Shigellosis			1		8		35
	Enterohemorrhagic Escherichia coli infection	17	15	10	4	384	112	3,344
	Typhoid fever	1				8	1	35
	Paratyphoid fever					3		8
IV	Hepatitis E		5	1	2	142	1	460
	West Nile fever							
	Hepatitis A			1	2	12		47
	Echinococcosis							12
	Mpox	1	1	3		157		209
	Yellow fever							
	Psittacosis							8
	Omsk hemorrhagic fever							
	Relapsing fever							21
	Kyasanur forest disease							
	Q fever							
	Rabies							
	Coccidioidomycosis							2
	Zika virus infection							1
	Severe Fever with Thrombocytopenia Syndrome							128
	Hemorrhagic fever with renal syndrome							
	Western equine encephalitis							
	Tick-borne encephalitis							
	Anthrax							
	Chikungunya fever					1	1	7
	Scrub typhus(Tsutsugamushi disease)					5	9	137
	Dengue fever		1	2	2	41	7	138
	Eastern equine encephalitis							
	Avian influenza (excluding H5N1 and H7N9)							
	Nipah virus infection							
	Japanese spotted fever					1	18	474
	Japanese encephalitis							4
	Hantavirus pulmonary syndrome							
	Herpes B virus infection							
	Glanders							
	Brucellosis			1		1		2
	Venezuelan equine encephalitis							
	Hendra virus infection							
Epidemic typhus								
Botulism								
Malaria	2				9		25	
Tularemia								
Lyme disease					1		29	
Lyssavirus infection(excluding rabies)								
Rift valley fever								
Melioidosis								
Legionellosis	1	1	6	2	144	28	1,944	
Leptospirosis					4	5	45	
Rocky mountain spotted fever								

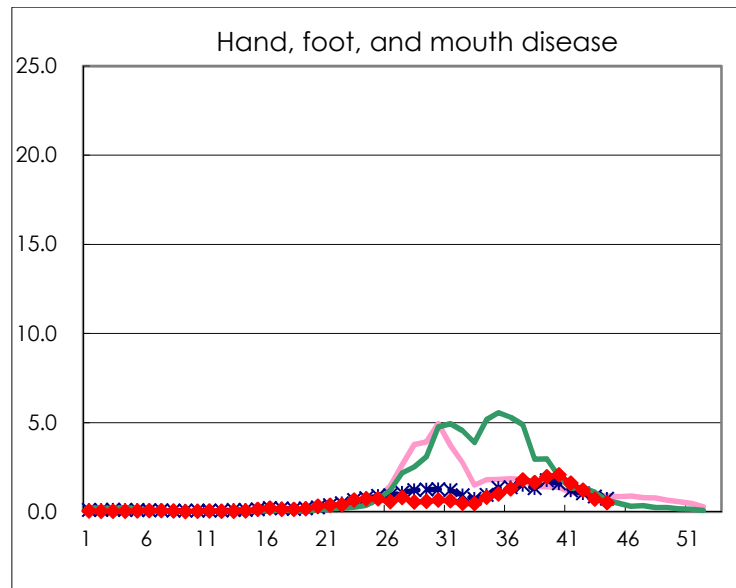
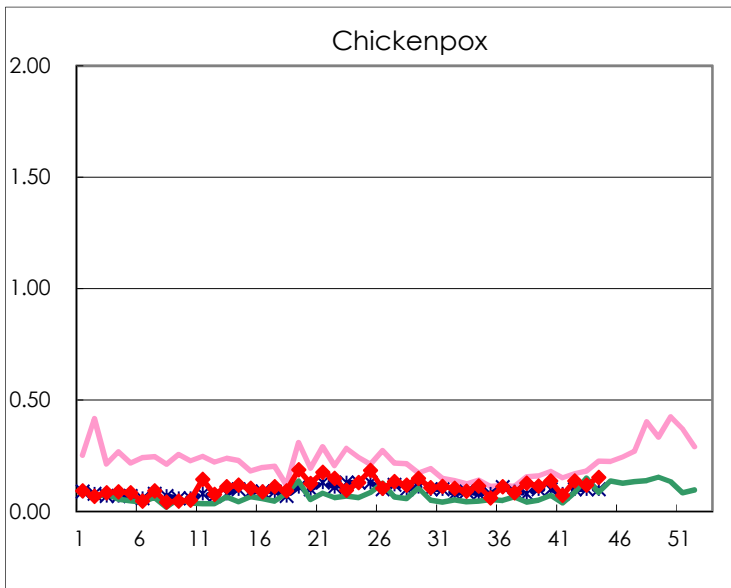
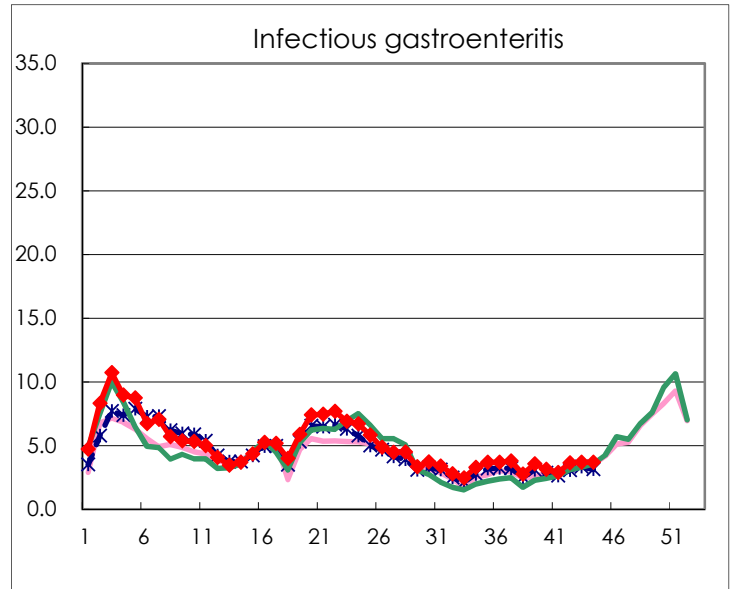
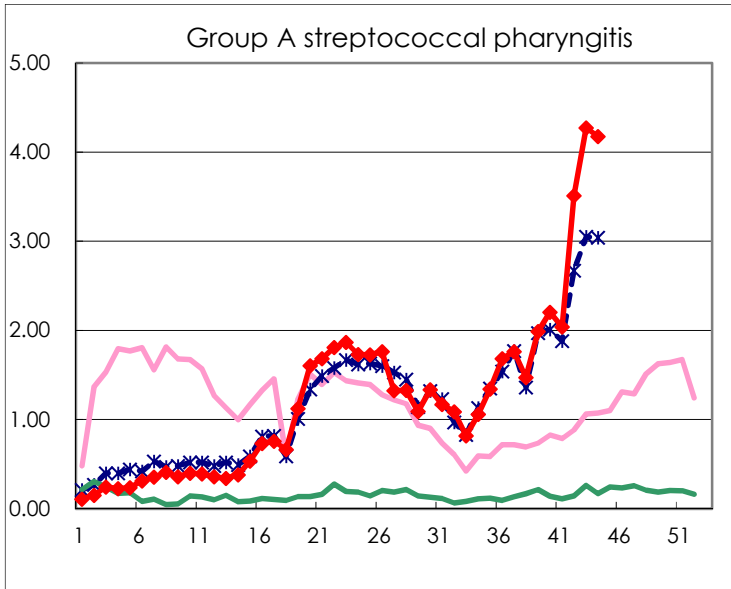
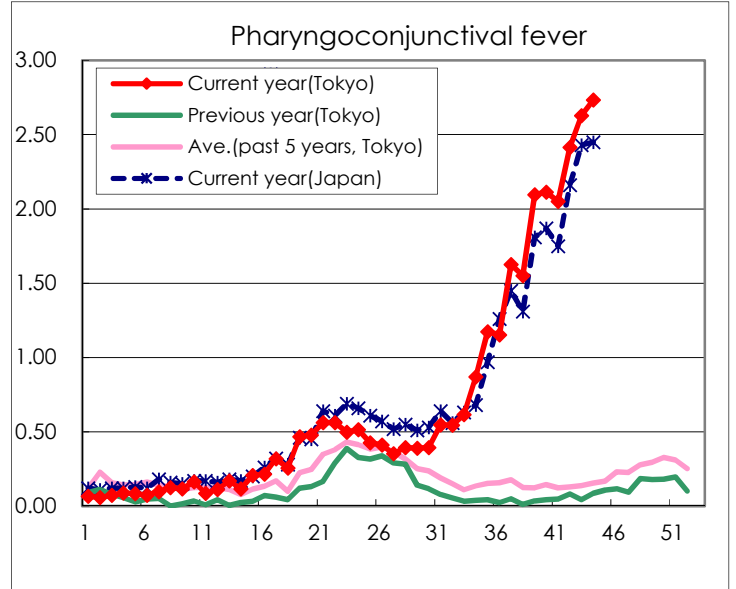
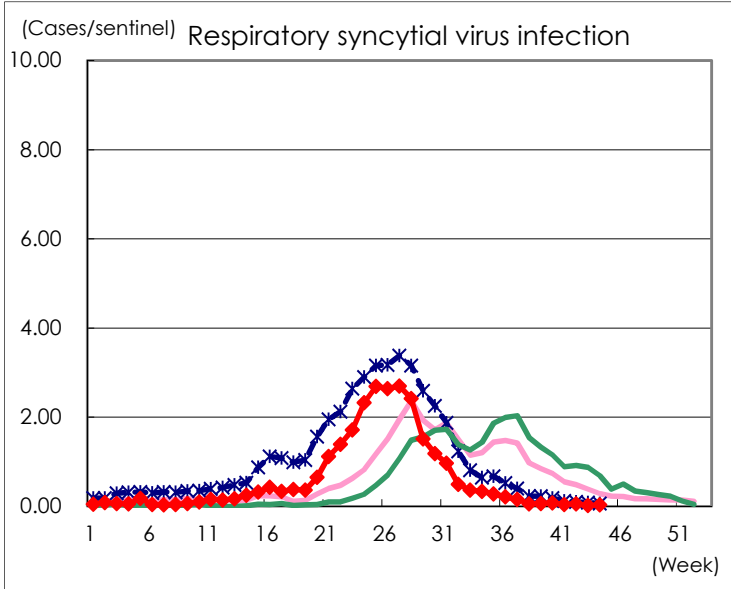
Category	Diseases	Tokyo					Japan	
		41st	42nd	43rd	44th	Cum 2023	44th	Cum 2023
V	Amebiasis		1		1	79	4	414
	Viral hepatitis(excluding hepatitis A and E)			1		39		204
	CRE infection	2	4	6	7	187	35	1,750
	Acute Flaccid Paralysis (excluding Acute poliomyelitis)					6		50
	Acute encephalitis(excluding JE and WNE)	3	1	2		34	13	495
	Cryptosporidiosis					1	1	11
	Creutzfeldt-Jakob disease					16	3	133
	Severe invasive streptococcal infections(TSLS)	2	3	5		103	10	711
	Acquired immunodeficiency syndrome (AIDS)	3	9	9	4	257	8	786
	Giardiasis	1				10		35
	Invasive <i>Haemophilus influenzae</i> disease	3			1	42	4	466
	Invasive meningococcal disease					2	1	15
	Invasive pneumococcal disease	2	3	6	5	165	28	1,477
	Varicella (limited to hospitalized case)	1	1			52	7	318
	Congenital rubella syndrome							
	Syphilis	81	73	67	49	3,136	166	12,679
	Disseminated cryptococcosis					14	3	147
	Tetanus		1			6	2	92
	Vancomycin-resistant <i>S. aureus</i> infection							
	Vancomycin-resistant <i>Enterococcus</i> infection					9	4	105
	Pertussis	2	2	3	4	106	19	828
Rubella					4		11	
Measles					7		25	
MDRA infection		1			3		13	

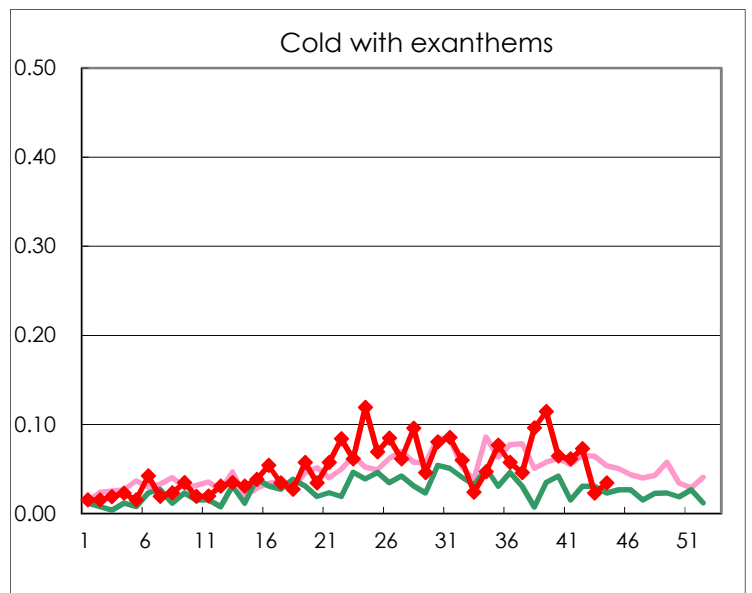
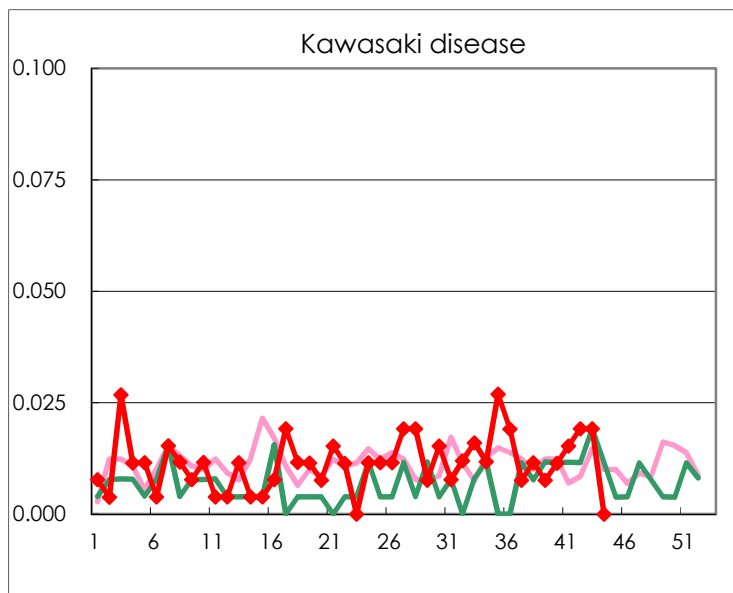
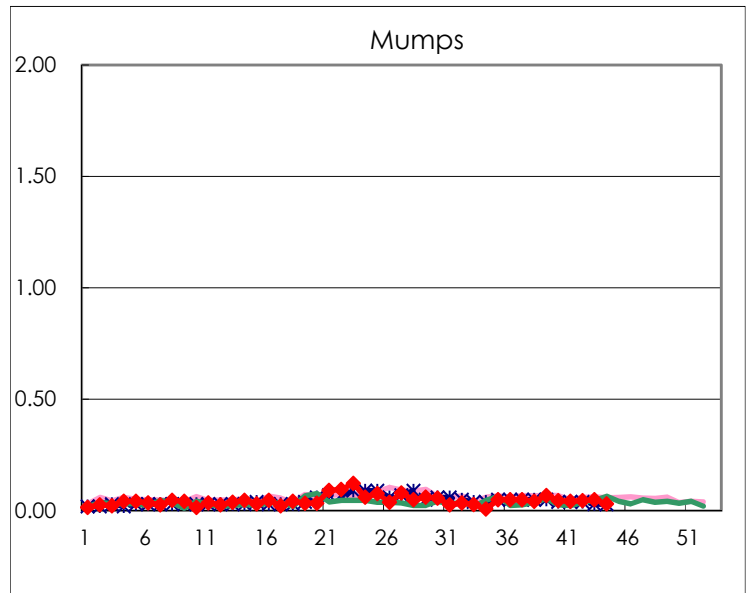
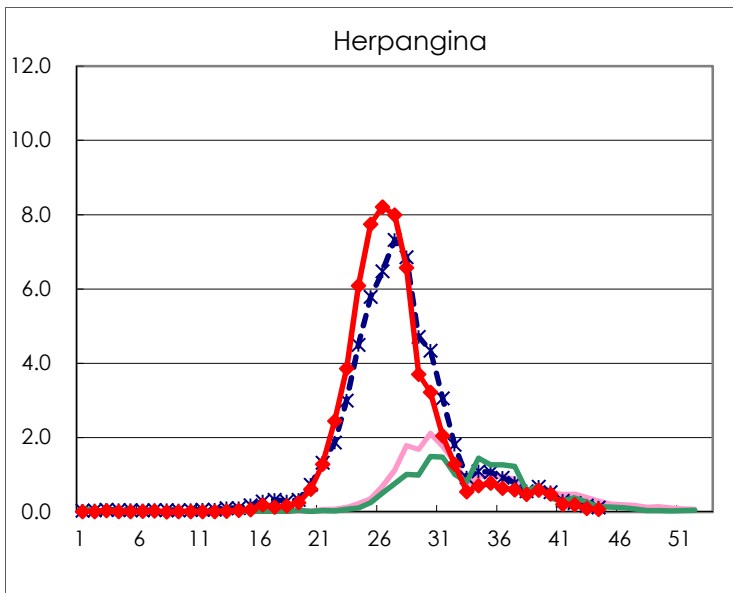
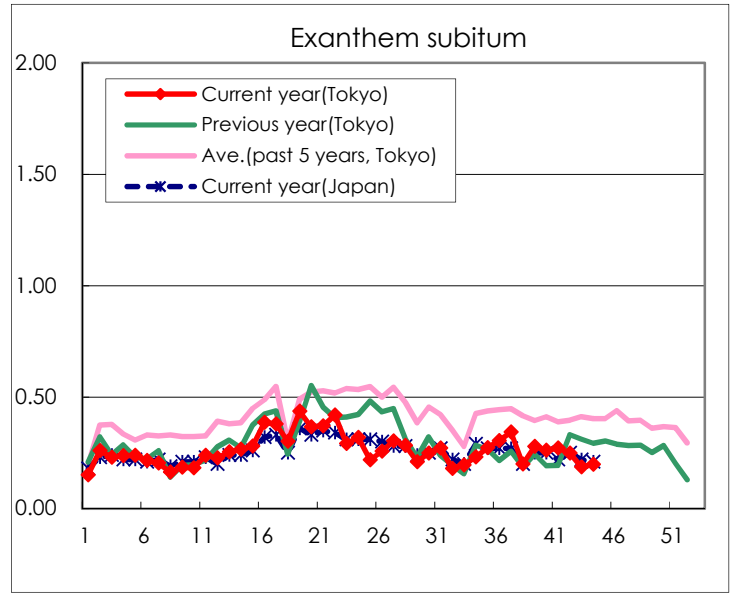
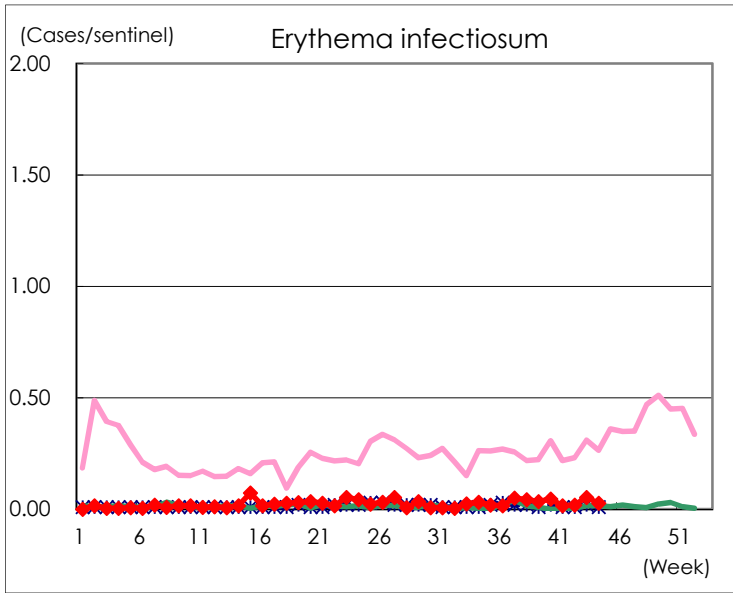
Number of patients with the diseases to be reported
by the designated clinics and hospitals

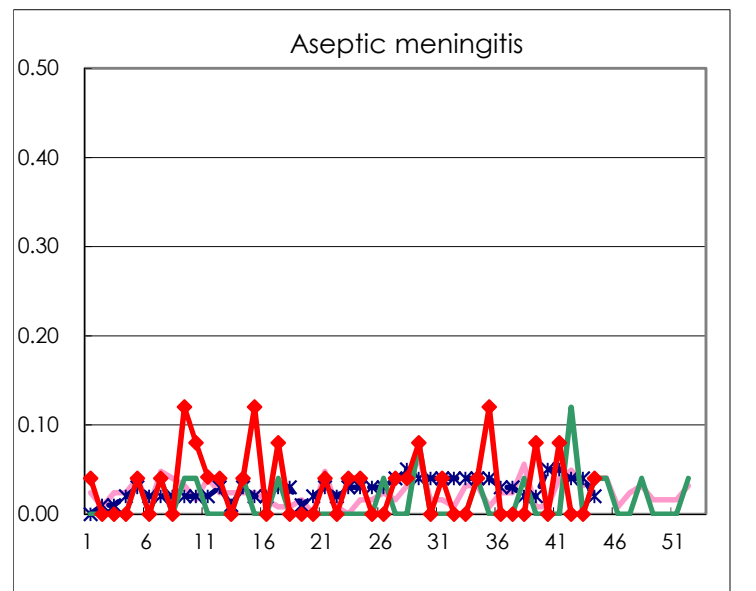
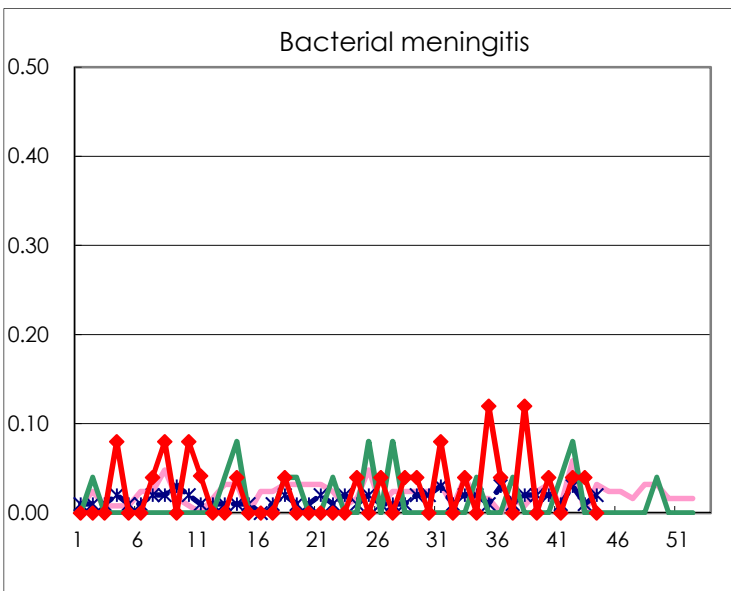
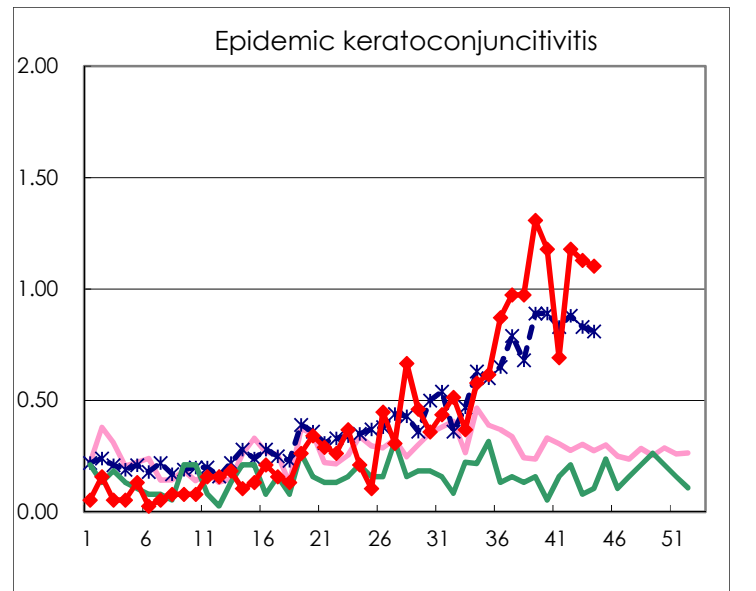
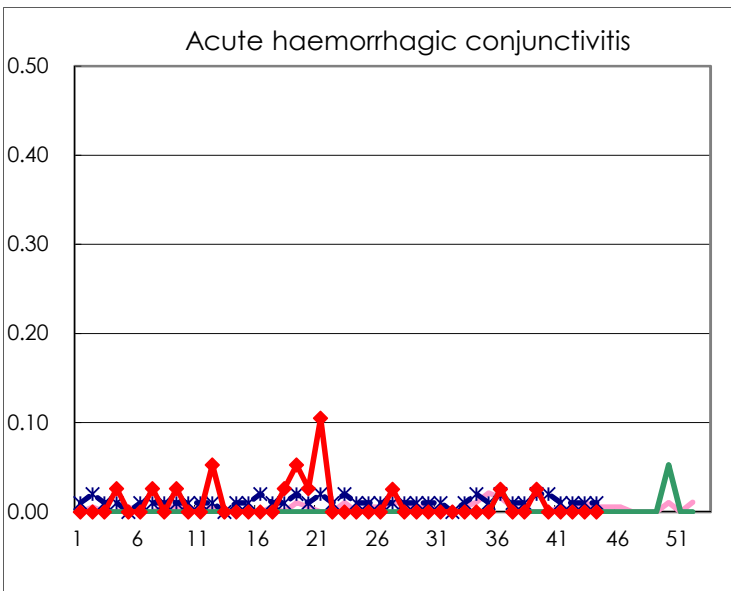
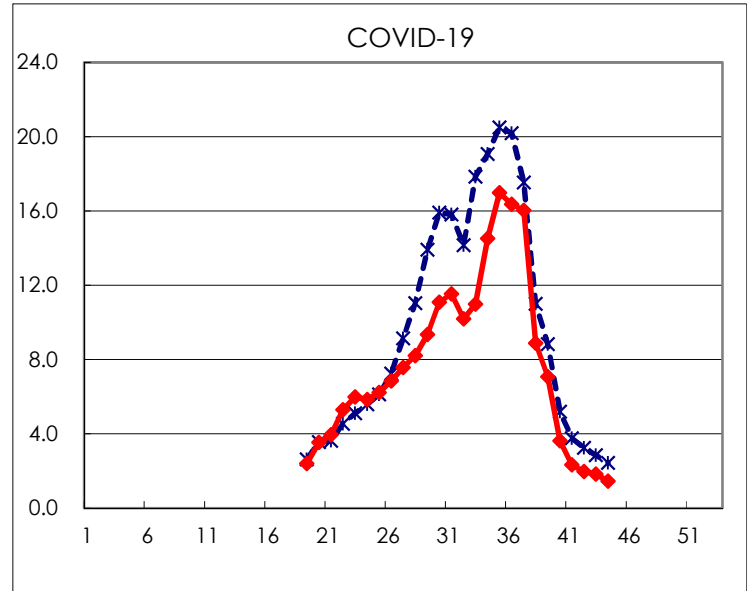
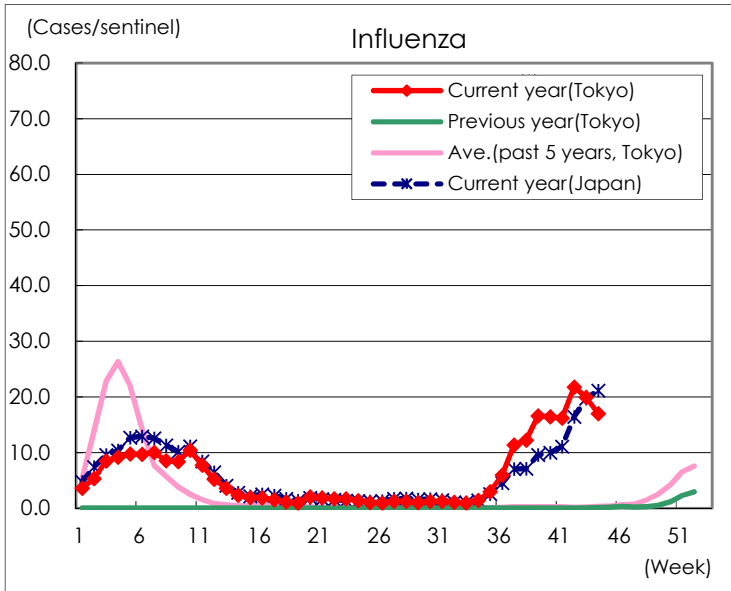
Diseases	Tokyo				
	41st	42nd	43rd	44th	/sentinel
Respiratory syncytial virus infection	11	15	4	9	0.03
Pharyngoconjunctival fever	535	630	686	716	2.73
Group A streptococcal pharyngitis	532	916	1,115	1,094	4.18
Infectious gastroenteritis	749	949	962	967	3.69
Chickenpox	19	36	31	40	0.15
Hand, foot, and mouth disease	417	317	184	133	0.51
Erythema infectiosum	4	5	14	7	0.03
Exanthem subitum	71	65	49	52	0.20
Herpangina	54	51	25	17	0.06
Mumps	11	12	13	8	0.03
Kawasaki disease	4	5	5		
Cold with exanthems	16	19	6	9	0.03
Influenza	6,733	9,058	8,282	7,086	16.99
COVID-19	971	819	764	607	1.46
Acute hemorrhagic conjunctivitis					
Epidemic keratoconjunctivitis	27	46	44	43	1.10
Bacterial meningitis		1	1		
Aseptic meningitis	2			1	0.04
Mycoplasma pneumonia	1	3	2	1	0.04
Chlamydial pneumonia (excluding psittacosis)				1	0.04
Infectious gastroenteritis (only by Rotavirus)					
Influenza-Associated Hospitalizations	31	31	24	36	1.44
COVID-19-Associated Hospitalizations	62	48	49	80	3.20

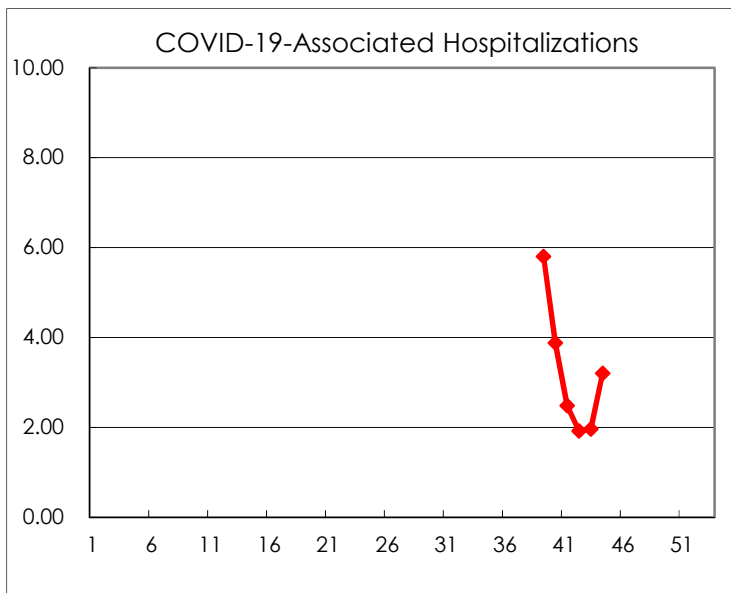
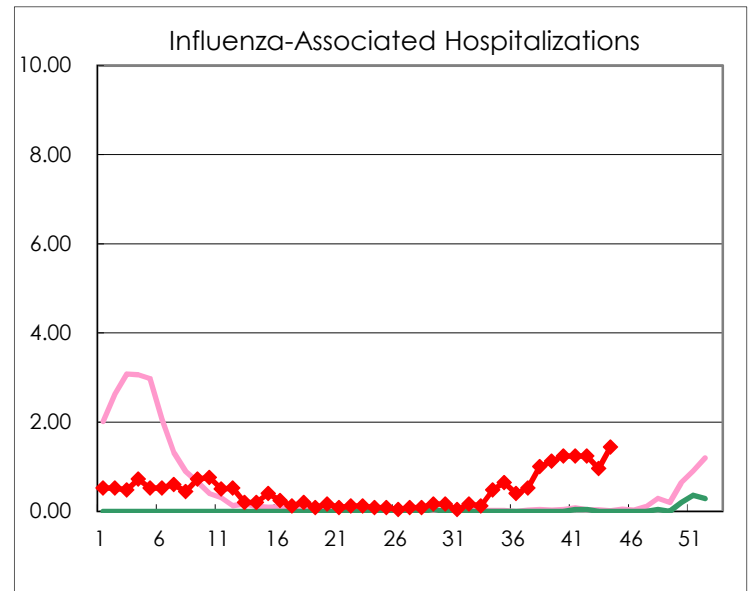
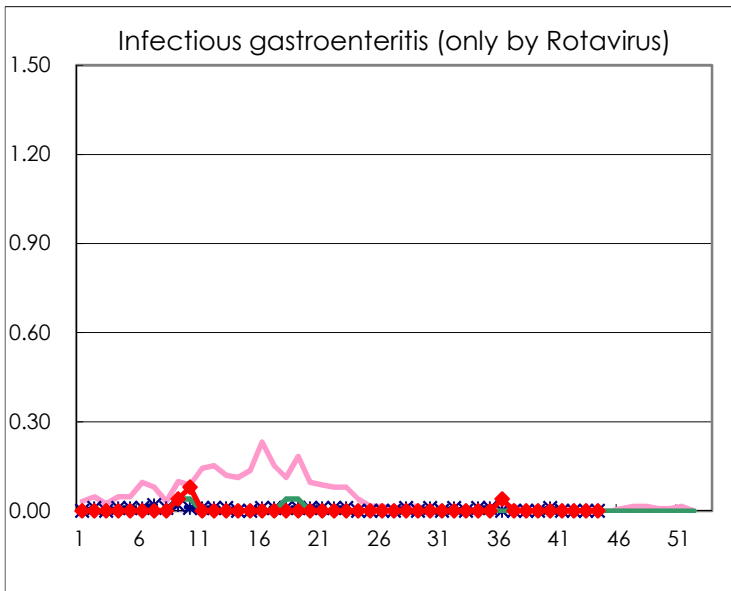
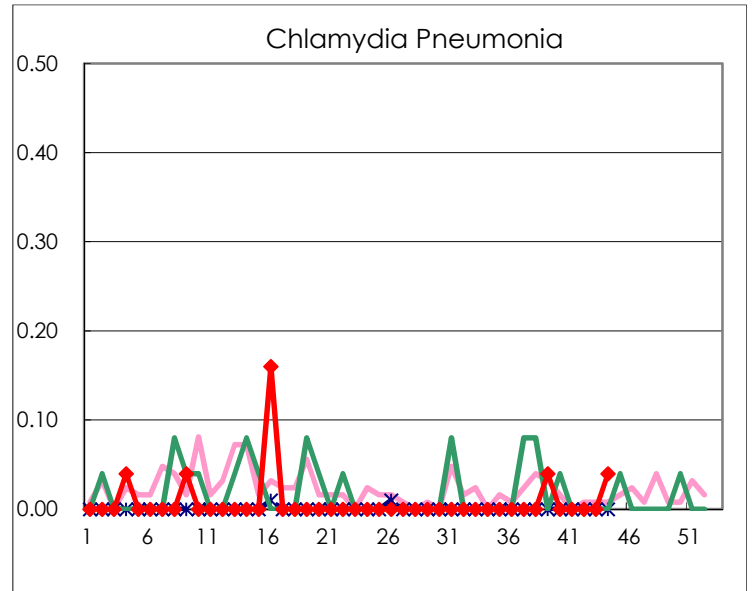
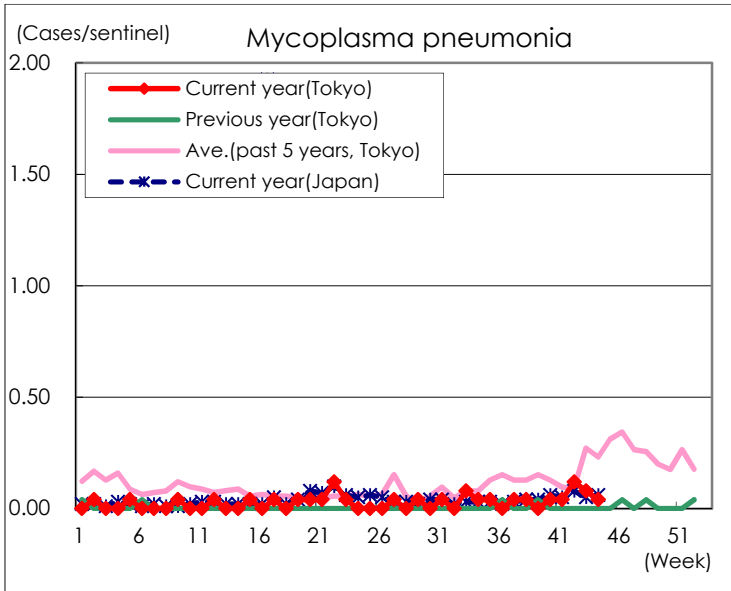
(Blank means 0.)

Disease Trend Graph (weekly reported cases per sentinel in comparison)









Number of sentinel facilities for weekly reporting		
Types of sentinels	Number of sentinels	Sentinels having reported
Pediatric	264	262
Influenza COVID-19	419	417
Ophthalmic	39	39
Specially-designated	25	25