
INFECTIOUS DISEASES WEEKLY REPORT

TOKYO iDWR

Tokyo Metropolitan Infectious Disease Surveillance Center

30 November 2023 / Number 47
(11/20 ~ 11/26)

Surveillance System in Tokyo, Japan

The infectious diseases which all physicians must report
All physicians must report to health centers the incidence of the diseases which are shown at page one. Health centers electronically report the individual cases to Tokyo Metropolitan Infectious Disease Surveillance Center.

The infectious diseases required to be reported by the sentinels
The numbers of patients who visit the sentinel clinics or hospitals during a week are reported to health centers in Tokyo. And they electronically report the numbers to Tokyo Metropolitan Infectious Disease Surveillance Center. We have about 500 sentinel clinics and hospitals in Tokyo.

Tokyo Metropolitan Institute of Public Health

TEL:81-3-3363-3213 FAX:81-3-5332-7365

e-mail:tmiph@section.metro.tokyo.jp

URL:idsc.tmiph.metro.tokyo.lg.jp/

Number of patients with the diseases which all physicians must report

Category	Diseases	Tokyo					Japan	
		44th	45th	46th	47th	Cum 2023	47th	Cum 2023
I	Ebola hemorrhagic fever							
	Crimean-Congo hemorrhagic fever							
	Smallpox							
	South American hemorrhagic fever							
	Plague							
	Marburg disease							
	Lassa fever							
II	Acute poliomyelitis							
	Tuberculosis	39	40	36	24	1,799	195	12,923
	Diphtheria							
	Severe Acute Respiratory Syndrome(SARS)							
	Middle East Respiratory Syndrome (MERS)							
	Avian influenza H5N1							
	Avian influenza H7N9							
III	Cholera					2		2
	Shigellosis			1		9	1	38
	Enterohemorrhagic Escherichia coli infection	5	6	8	5	404	60	3,566
	Typhoid fever					8		35
	Paratyphoid fever					3		8
IV	Hepatitis E	2	1	2	1	146	7	485
	West Nile fever							
	Hepatitis A	2				12		50
	Echinococcosis							13
	Mpox		2	1	1	161	1	217
	Yellow fever							
	Psittacosis							8
	Omsk hemorrhagic fever							
	Relapsing fever							21
	Kyasanur forest disease							
	Q fever							
	Rabies							
	Coccidioidomycosis						1	4
	Zika virus infection							1
	Severe Fever with Thrombocytopenia Syndrome						1	131
	Hemorrhagic fever with renal syndrome							
	Western equine encephalitis							
	Tick-borne encephalitis							
	Anthrax							
	Chikungunya fever					1		7
	Scrub typhus(Tsutsugamushi disease)			2	1	8	40	248
	Dengue fever	2	1	1	1	44	4	156
	Eastern equine encephalitis							
	Avian influenza (excluding H5N1 and H7N9)							
	Nipah virus infection							
	Japanese spotted fever					1	2	495
	Japanese encephalitis							6
	Hantavirus pulmonary syndrome							
	Herpes B virus infection							
	Glanders							
	Brucellosis					1		2
	Venezuelan equine encephalitis							
	Hendra virus infection							
Epidemic typhus								
Botulism								
Malaria		1		1	11	3	32	
Tularemia								
Lyme disease					1		29	
Lyssavirus infection(excluding rabies)								
Rift valley fever								
Melioidosis								
Legionellosis	3	1	4	4	154	41	2,074	
Leptospirosis		1			5		48	
Rocky mountain spotted fever								

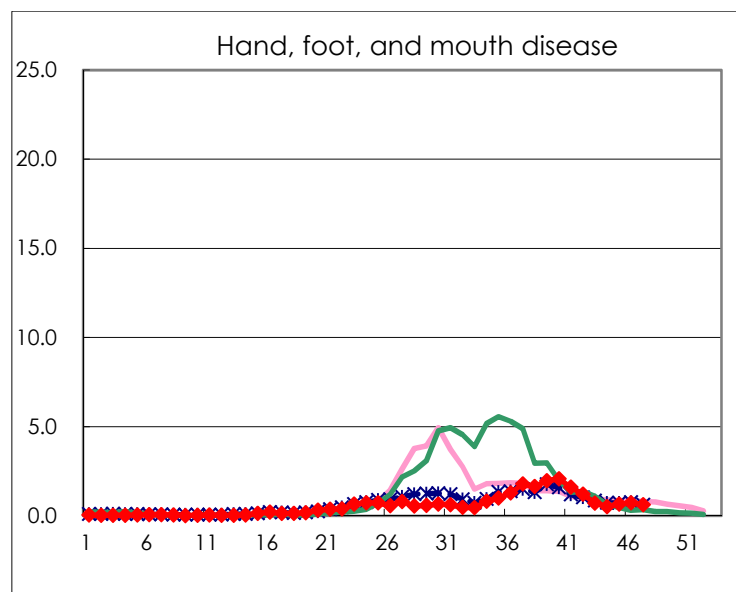
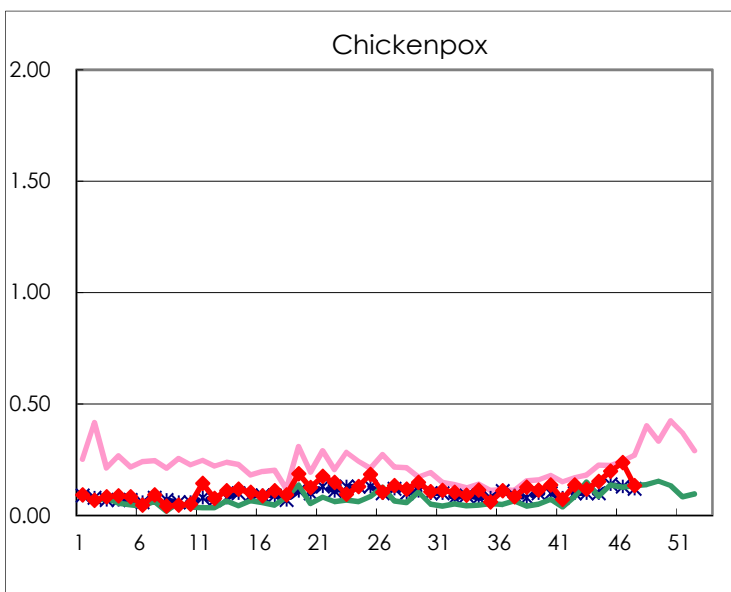
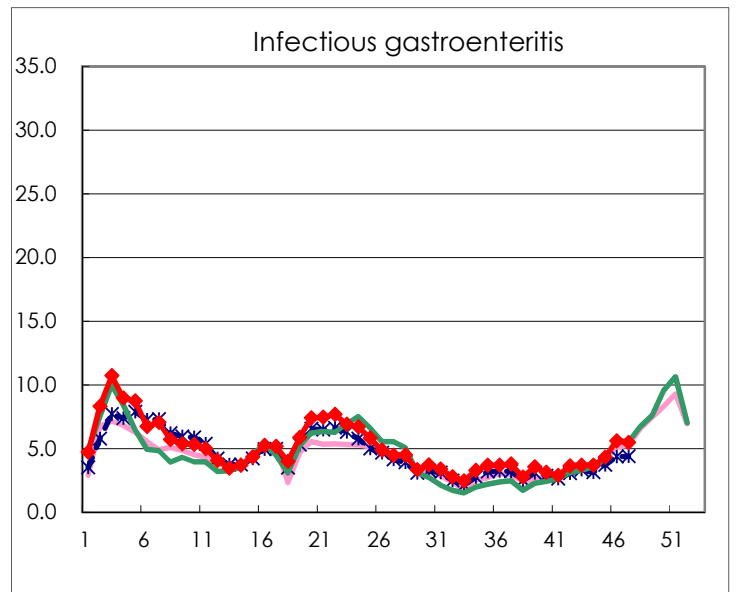
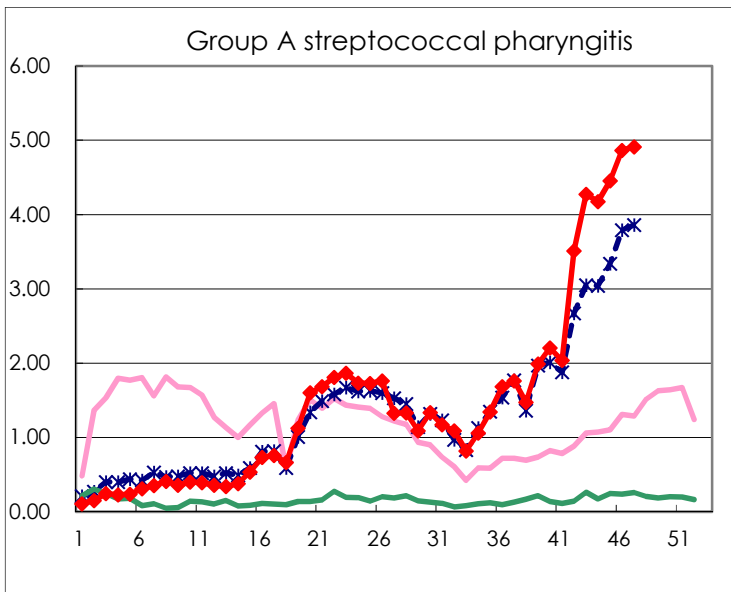
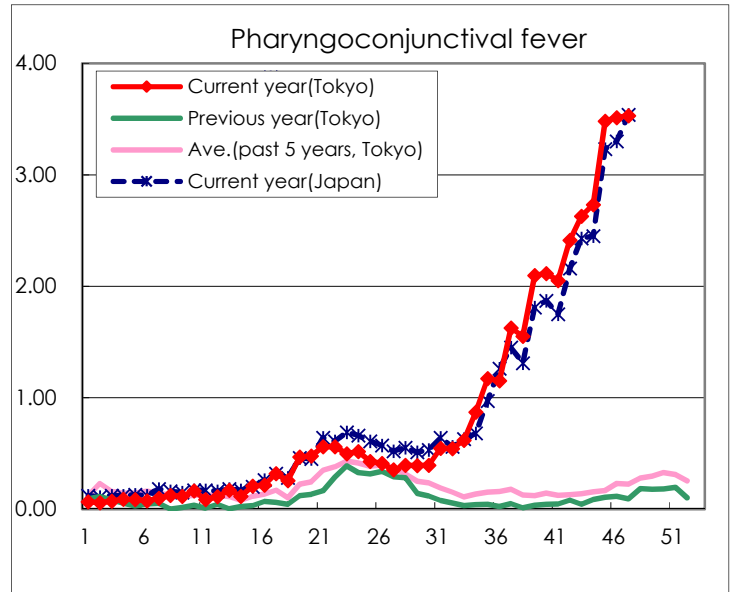
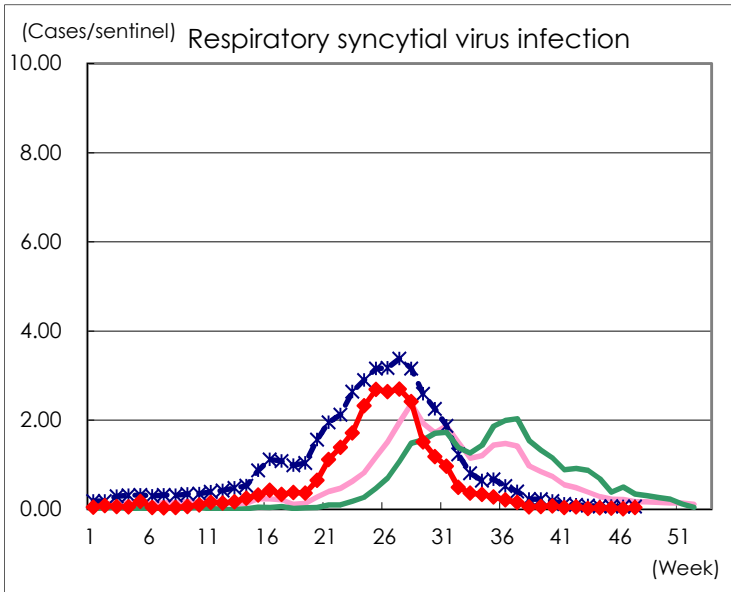
Category	Diseases	Tokyo					Japan	
		44th	45th	46th	47th	Cum 2023	47th	Cum 2023
V	Amebiasis	1	1	1	2	83	2	434
	Viral hepatitis(excluding hepatitis A and E)		2	1		42	5	219
	CRE infection	7	7	4	6	204	35	1,890
	Acute Flaccid Paralysis (excluding Acute poliomyelitis)					6	2	53
	Acute encephalitis(excluding JE and WNE)		1			36	11	543
	Cryptosporidiosis					1		11
	Creutzfeldt-Jakob disease		1	1	1	19	2	145
	Severe invasive streptococcal infections(TSLS)		2	4	7	116	15	784
	Acquired immunodeficiency syndrome (AIDS)	4	4	5	4	270	7	843
	Giardiasis					10	1	36
	Invasive <i>Haemophilus influenzae</i> disease	1	1			43	8	493
	Invasive meningococcal disease					3		16
	Invasive pneumococcal disease	6	9	5	3	183	37	1,636
	Varicella (limited to hospitalized case)			1	1	54	6	342
	Congenital rubella syndrome							
	Syphilis	51	75	75	44	3,336	139	13,490
	Disseminated cryptococcosis		2			16	1	153
	Tetanus					6		99
	Vancomycin-resistant <i>S. aureus</i> infection							
	Vancomycin-resistant <i>Enterococcus</i> infection					9		110
	Pertussis	5			2	109	9	893
Rubella					4		11	
Measles					7		25	
MDRA infection					3		13	

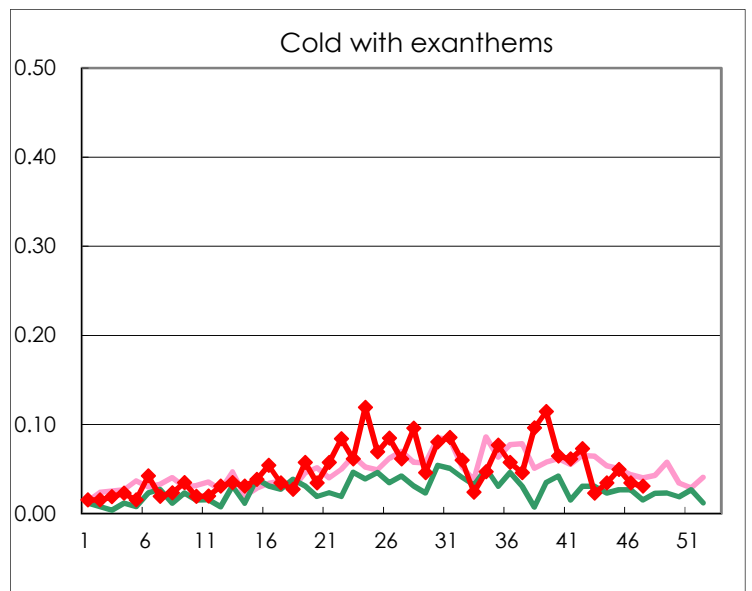
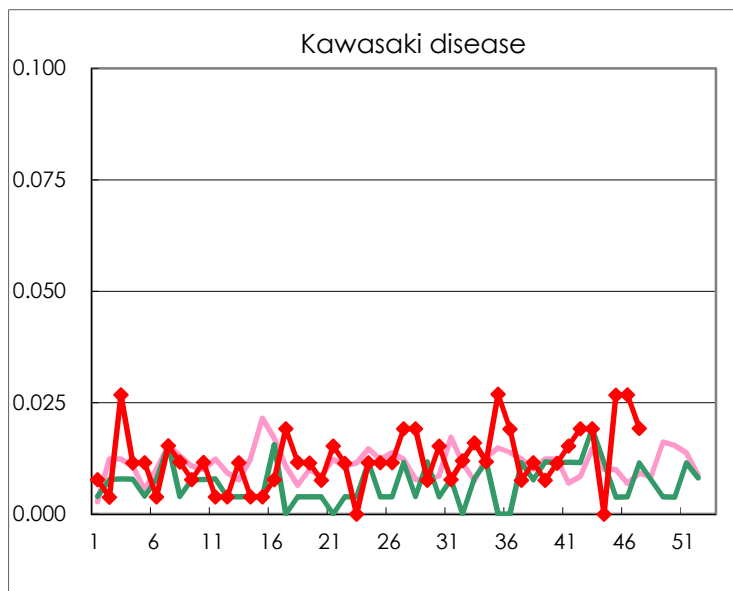
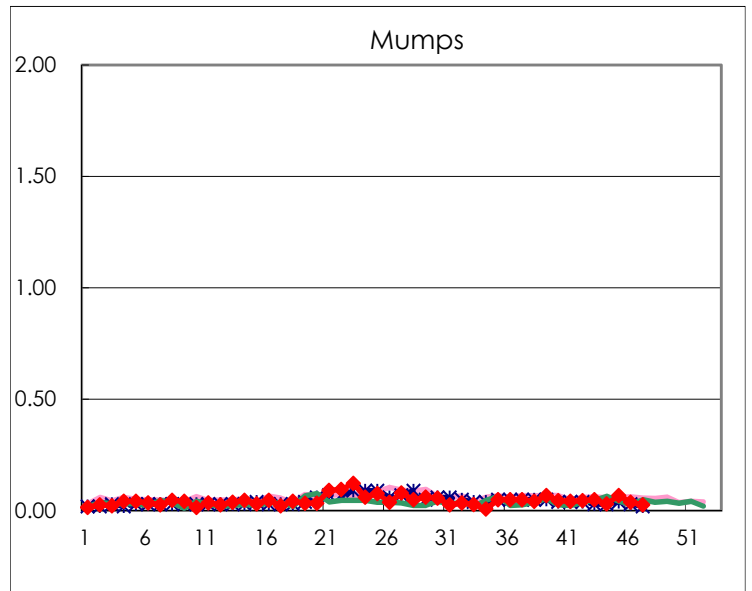
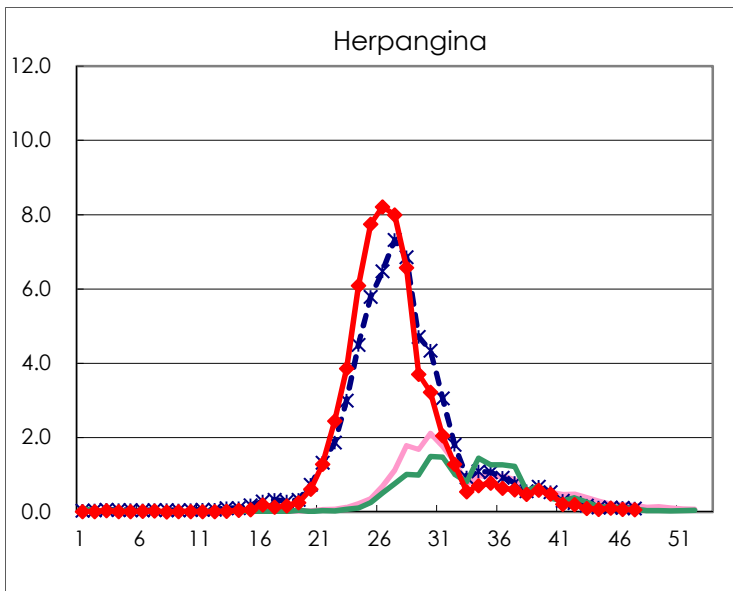
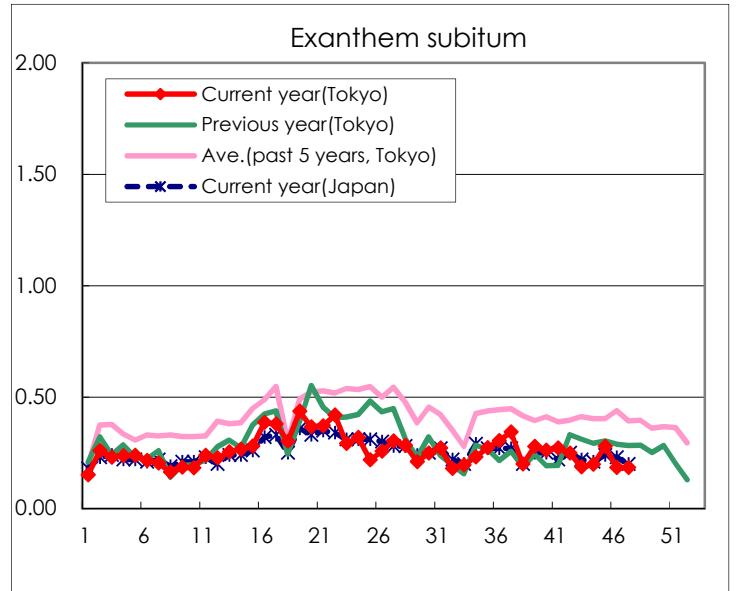
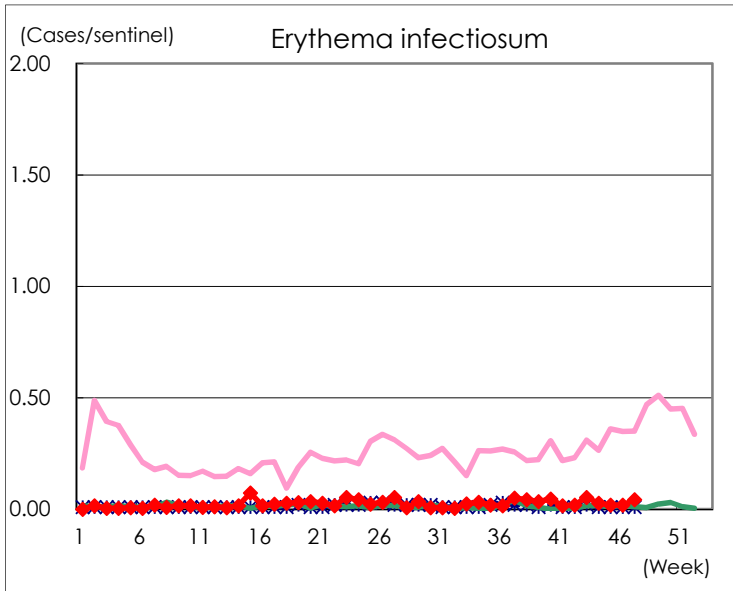
Number of patients with the diseases to be reported
by the designated clinics and hospitals

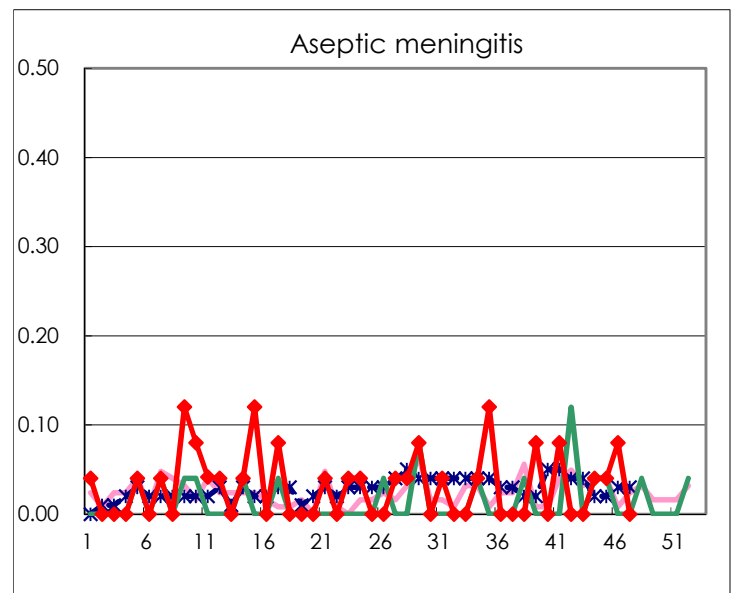
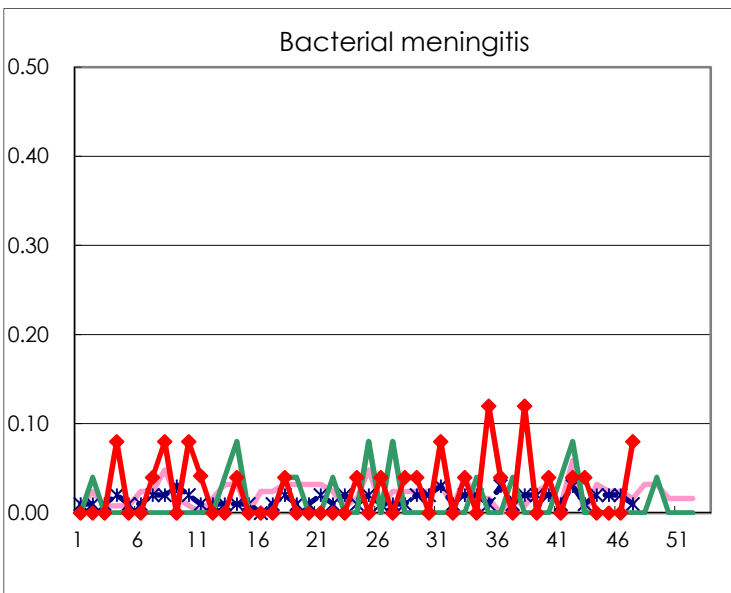
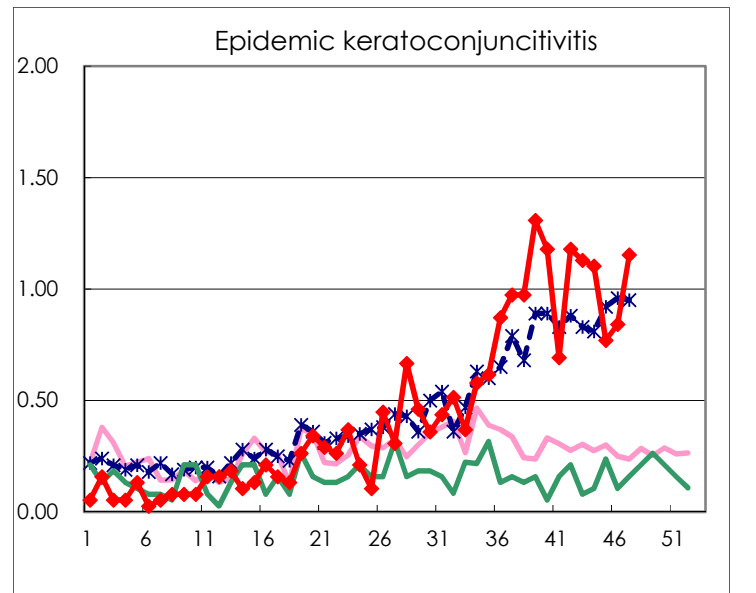
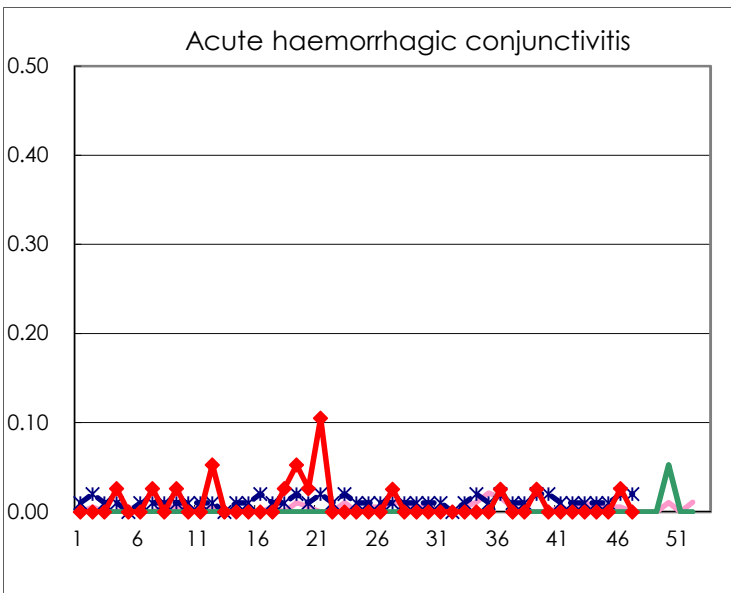
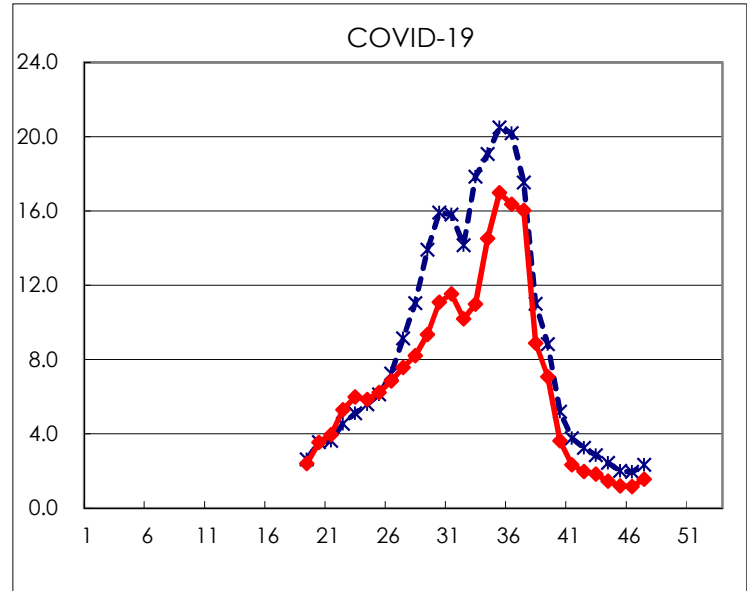
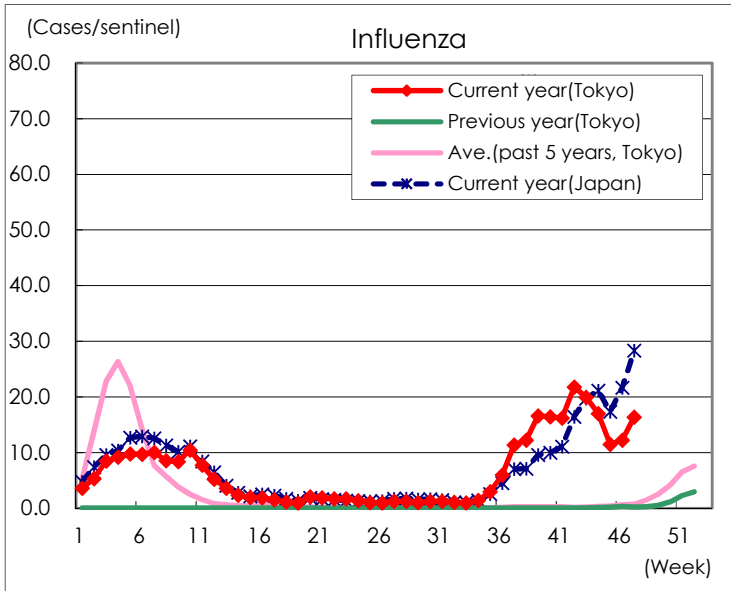
Diseases	Tokyo				
	44th	45th	46th	47th	/sentinel
Respiratory syncytial virus infection	9	6	3	10	0.04
Pharyngoconjunctival fever	716	912	917	918	3.53
Group A streptococcal pharyngitis	1,094	1,167	1,269	1,277	4.91
Infectious gastroenteritis	967	1,132	1,459	1,420	5.46
Chickenpox	40	52	62	35	0.13
Hand, foot, and mouth disease	133	171	192	162	0.62
Erythema infectiosum	7	5	5	11	0.04
Exanthem subitum	52	73	48	48	0.18
Herpangina	17	27	17	15	0.06
Mumps	8	18	10	7	0.03
Kawasaki disease		7	7	5	0.02
Cold with exanthems	9	13	9	8	0.03
Influenza	7,086	4,779	5,082	6,781	16.38
COVID-19	607	501	486	644	1.56
Acute hemorrhagic conjunctivitis			1		
Epidemic keratoconjunctivitis	43	30	32	45	1.15
Bacterial meningitis				2	0.08
Aseptic meningitis	1	1	2		
Mycoplasma pneumonia	1	5	1		
Chlamydial pneumonia (excluding psittacosis)	1		1		
Infectious gastroenteritis (only by Rotavirus)					
Influenza-Associated Hospitalizations	36	31	40	40	1.60
COVID-19-Associated Hospitalizations	80	48	53	60	2.40

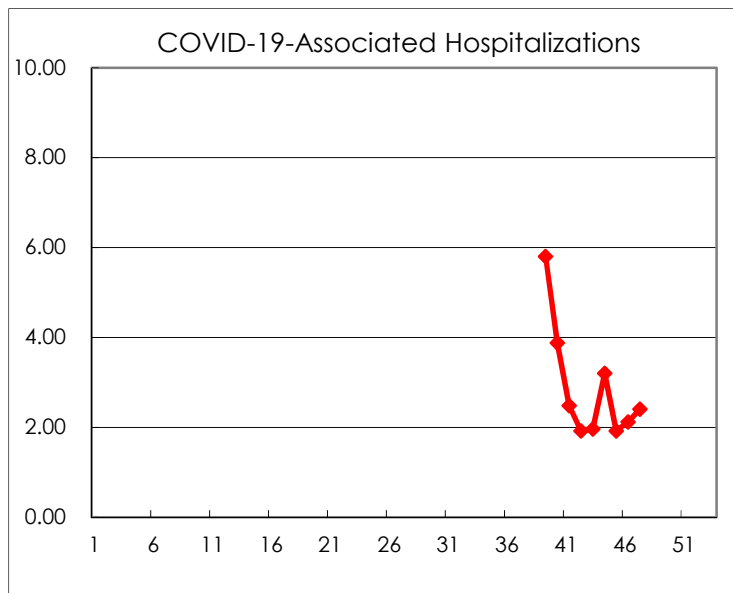
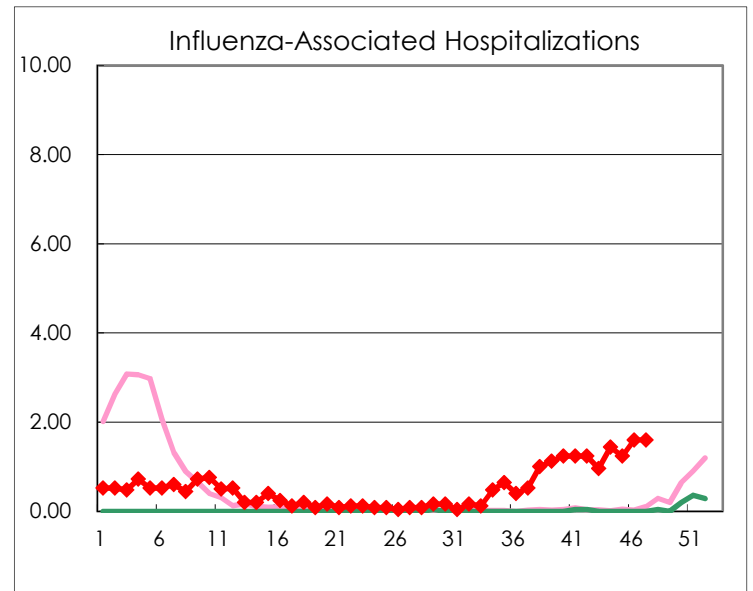
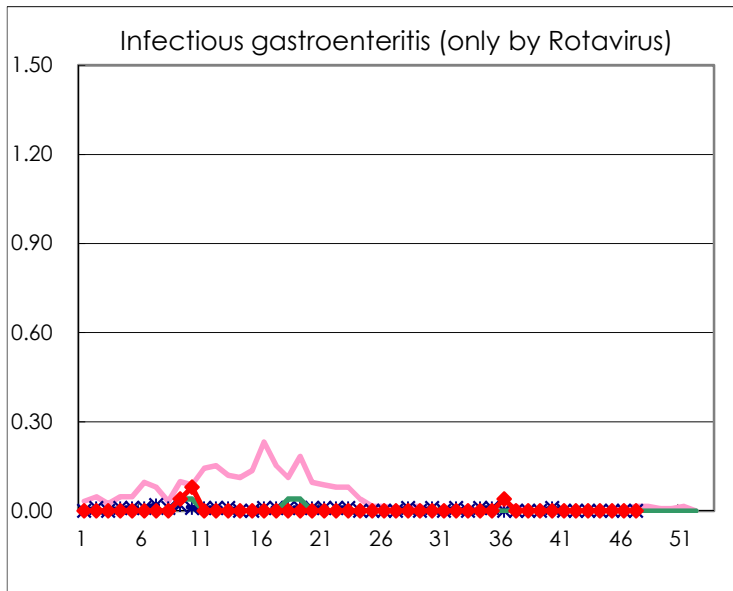
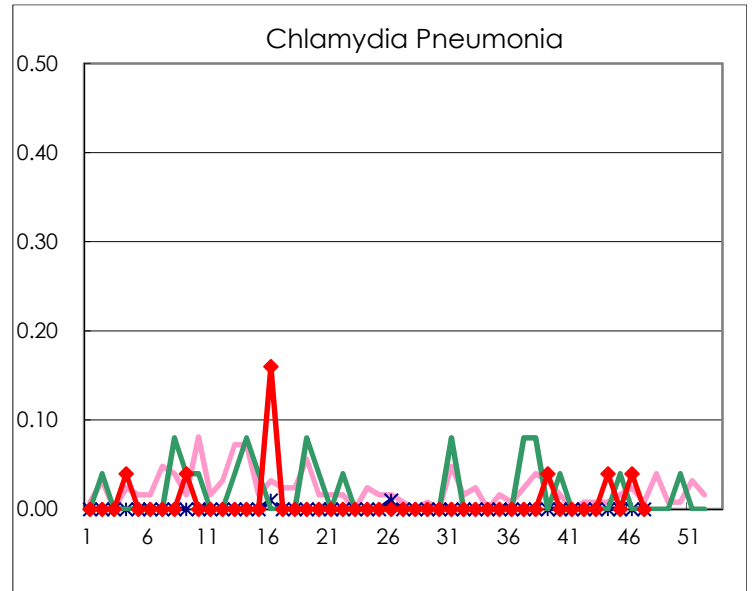
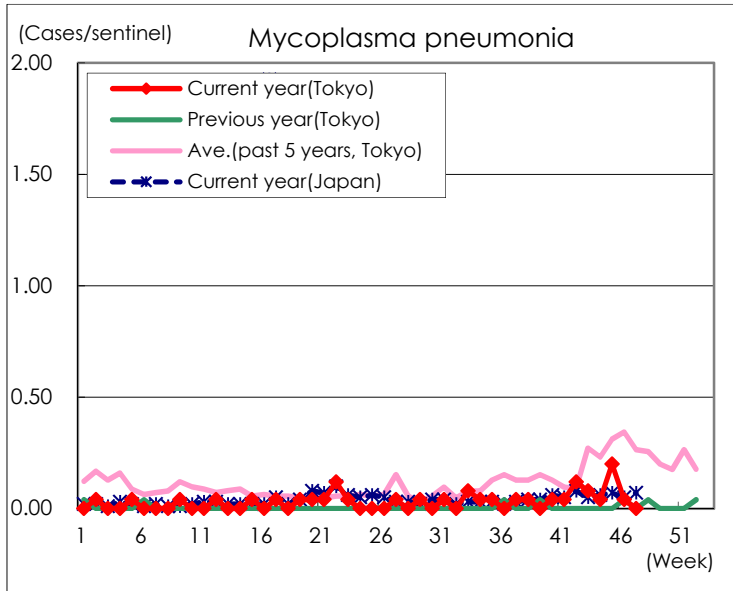
(Blank means 0.)

Disease Trend Graph (weekly reported cases per sentinel in comparison)









Number of sentinel facilities for weekly reporting		
Types of sentinels	Number of sentinels	Sentinels having reported
Pediatric	264	260
Influenza COVID-19	419	414
Ophthalmic	39	39
Specially-designated	25	25