

---

INFECTIOUS DISEASES WEEKLY REPORT

# TOKYO IDWR

Tokyo Metropolitan Infectious Disease Surveillance Center

**2 May 2024 / Number 17**  
**( 4/22 ~ 4/28 )**

## Surveillance System in Tokyo, Japan

The infectious diseases which all physicians must report  
All physicians must report to health centers the incidence of the diseases which are shown at page one. Health centers electronically report the individual cases to Tokyo Metropolitan Infectious Disease Surveillance Center.

The infectious diseases required to be reported by the sentinels  
The numbers of patients who visit the sentinel clinics or hospitals during a week are reported to health centers in Tokyo. And they electronically report the numbers to Tokyo Metropolitan Infectious Disease Surveillance Center. We have about 500 sentinel clinics and hospitals in Tokyo.

Tokyo Metropolitan Institute of Public Health

TEL:81-3-3363-3213 FAX:81-3-5332-7365

e-mail:tmiph@section.metro.tokyo.jp

URL:idsc.tmiph.metro.tokyo.lg.jp/

---

Number of patients with the diseases which all physicians must report

Category	Diseases	Tokyo					Japan	
		14th	15th	16th	17th	Cum 2024	17th	Cum 2024
I	Ebola hemorrhagic fever							
	Crimean-Congo hemorrhagic fever							
	Smallpox							
	South American hemorrhagic fever							
	Plague							
	Marburg disease							
	Lassa fever							
II	Acute poliomyelitis							
	Tuberculosis	37	46	46	33	635	234	4,565
	Diphtheria							
	Severe Acute Respiratory Syndrome(SARS)							
	Middle East Respiratory Syndrome (MERS)							
	Avian influenza H5N1							
III	Avian influenza H7N9							
	Cholera							
	Shigellosis		1			3		18
	Enterohemorrhagic Escherichia coli infection		5	3	1	40	26	435
	Typhoid fever			1		2	1	11
IV	Paratyphoid fever	1				2		2
	Hepatitis E	2	4	2	3	46	5	168
	West Nile fever							
	Hepatitis A	1			2	6	9	43
	Echinococcosis							2
	Mpox		1			10		12
	Yellow fever							
	Psittacosis							
	Omsk hemorrhagic fever							
	Relapsing fever							1
	Kyasanur forest disease							
	Q fever							6
	Rabies							
	Coccidioidomycosis			1		1		1
	Zika virus infection							
	Severe Fever with Thrombocytopenia Syndrome						4	24
	Hemorrhagic fever with renal syndrome							
	Western equine encephalitis							
	Tick-borne encephalitis							
	Anthrax							
	Chikungunya fever							
	Scrub typhus(Tsutsugamushi disease)						4	65
	Dengue fever	1			1	15	7	55
	Eastern equine encephalitis							
	Avian influenza (excluding H5N1 and H7N9)							
	Nipah virus infection							
	Japanese spotted fever						12	23
	Japanese encephalitis							1
	Hantavirus pulmonary syndrome							
	Herpes B virus infection							
	Glanders							
	Brucellosis							
Venezuelan equine encephalitis								
Hendra virus infection								
Epidemic typhus								
Botulism								
Malaria		1		1	3	1	11	
Tularemia								
Lyme disease								
Lyssavirus infection(excluding rabies)								
Rift valley fever								
Melioidosis								
Legionellosis	4	6		3	43	14	510	
Leptospirosis							1	
Rocky mountain spotted fever								

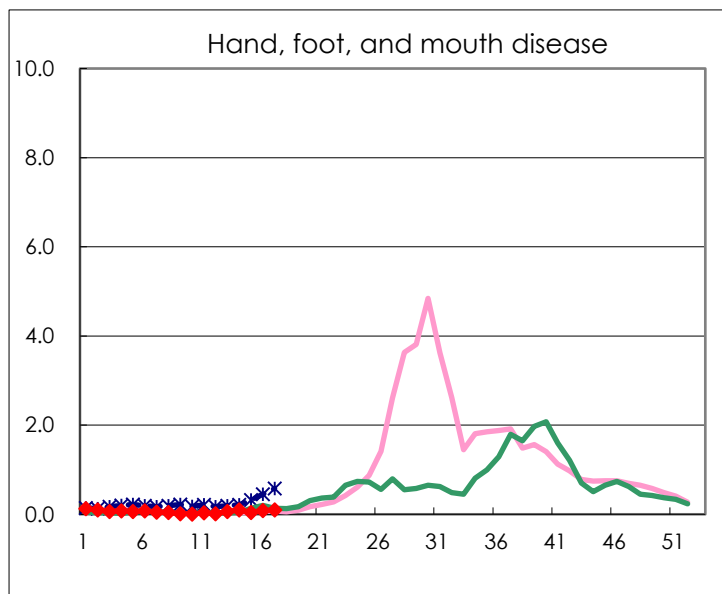
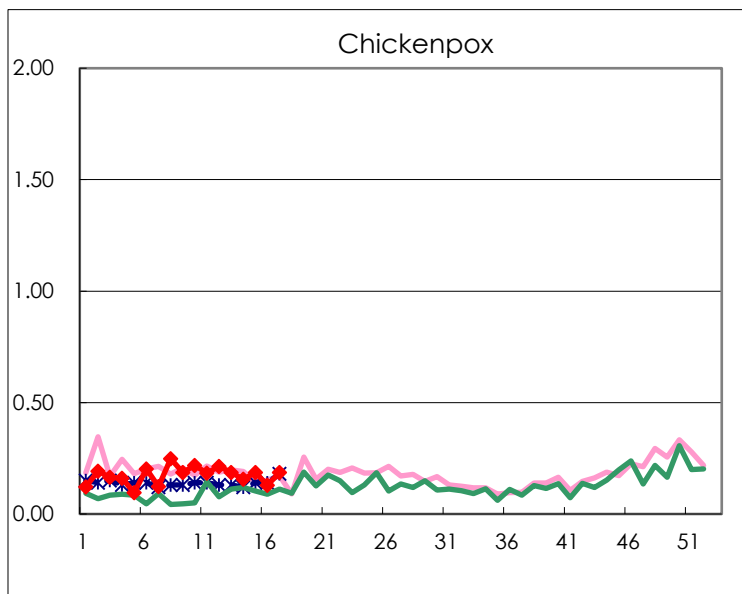
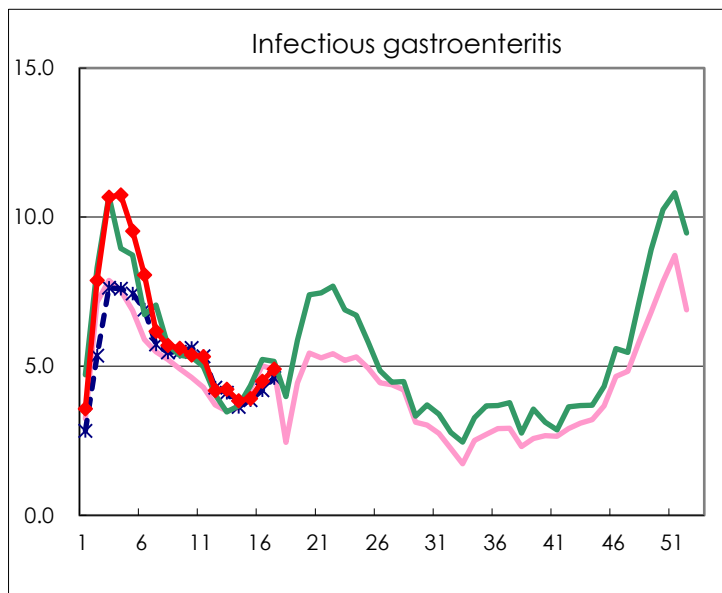
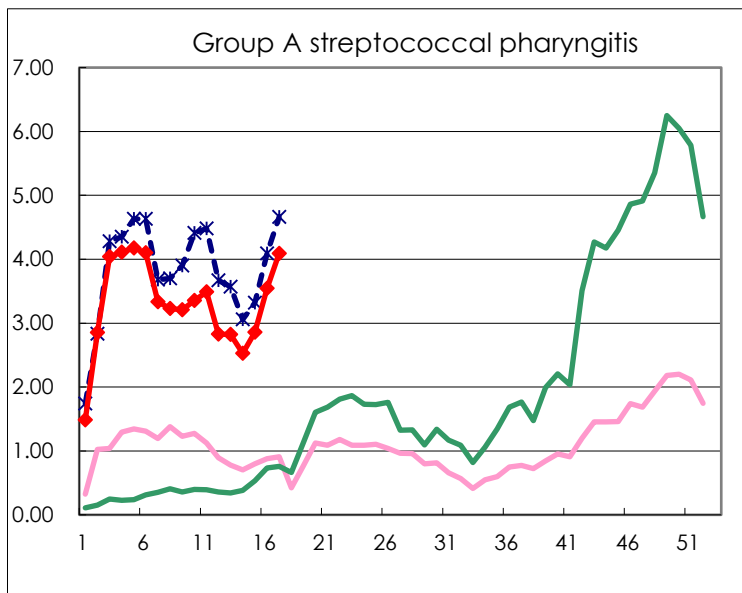
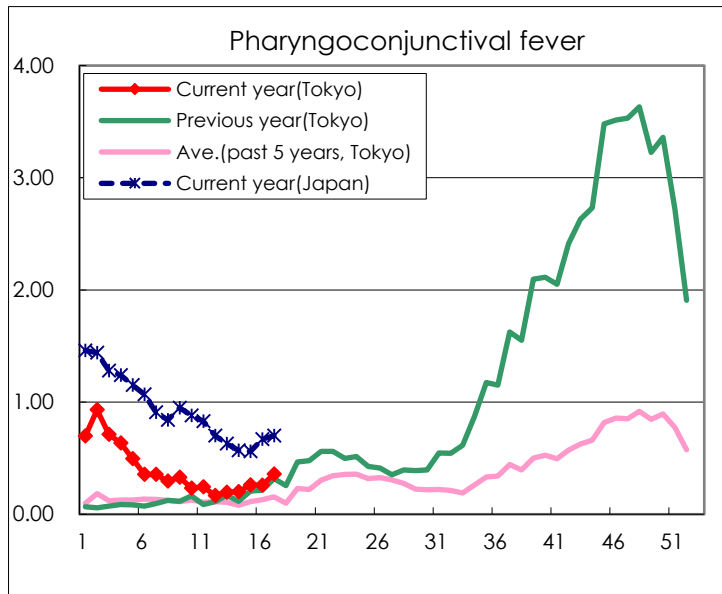
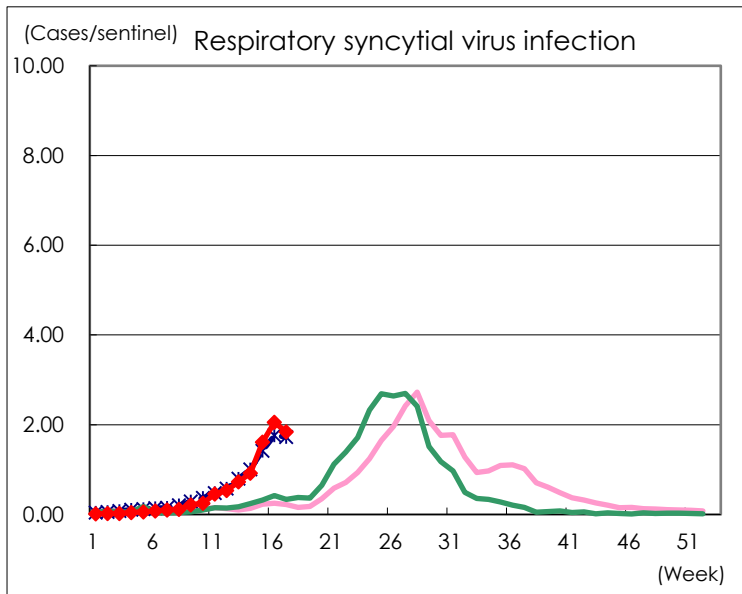
Category	Diseases	Tokyo					Japan	
		14th	15th	16th	17th	Cum 2024	17th	Cum 2024
V	Amebiasis	1	1	2	4	40	8	177
	Viral hepatitis(excluding hepatitis A and E)	2	1	2		14	4	64
	CRE infection	1	2	2	3	55	28	592
	Acute Flaccid Paralysis (excluding Acute poliomyelitis)		1			2	1	11
	Acute encephalitis(excluding JE and WNE)		2		1	15	7	202
	Cryptosporidiosis	1				3	1	9
	Creutzfeldt-Jakob disease	1				7	2	56
	Severe invasive streptococcal infections(TSLS)	11	6	5	7	123	27	772
	Acquired immunodeficiency syndrome (AIDS)	7	6	4	4	88	10	298
	Giardiasis		1			5		15
	Invasive <i>Haemophilus influenzae</i> disease	1	1	3		16	7	210
	Invasive meningococcal disease					1		13
	Invasive pneumococcal disease	5	8	5	5	100	52	887
	Varicella (limited to hospitalized case)	2		1	1	21	8	147
	Congenital rubella syndrome							
	Syphilis	64	69	71	84	1,088	192	4,190
	Disseminated cryptococcosis	2				8	4	73
	Tetanus							17
	Vancomycin-resistant <i>S. aureus</i> infection							
	Vancomycin-resistant <i>Enterococcus</i> infection				1	2	3	41
	Pertussis	1	1	1	3	22	24	243
	Rubella						1	4
	Measles					6		21
MDRA infection								

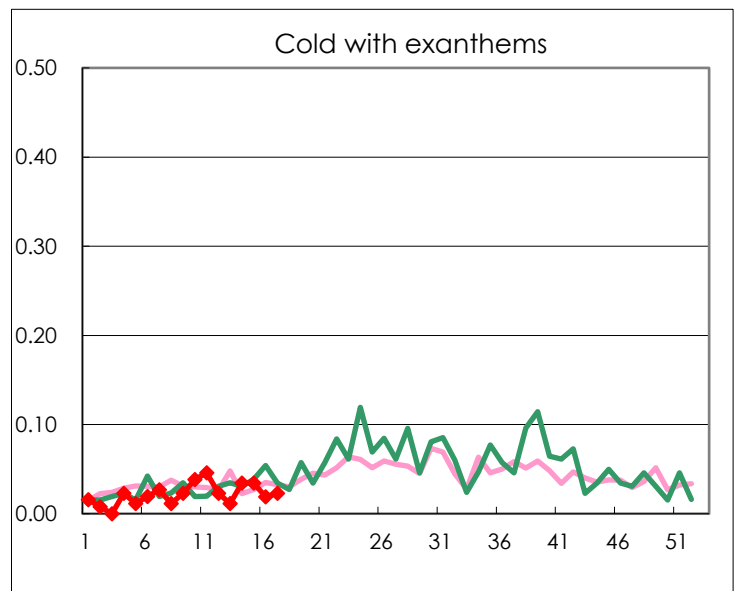
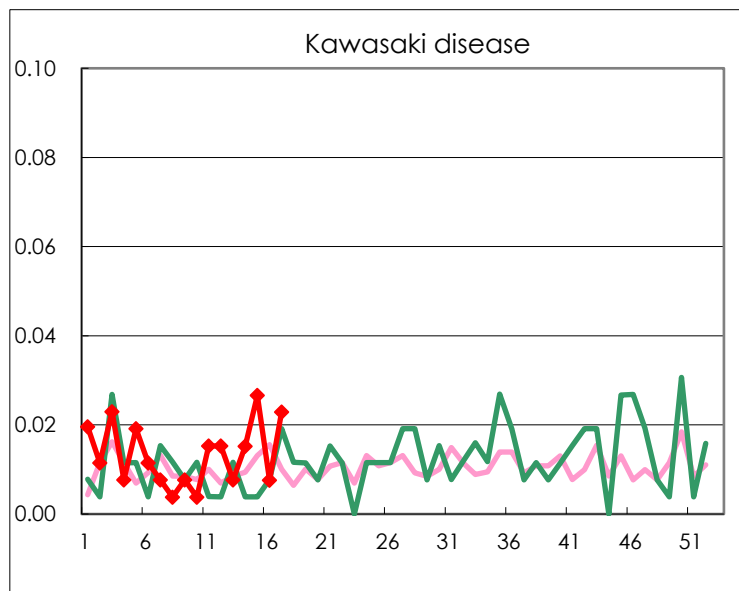
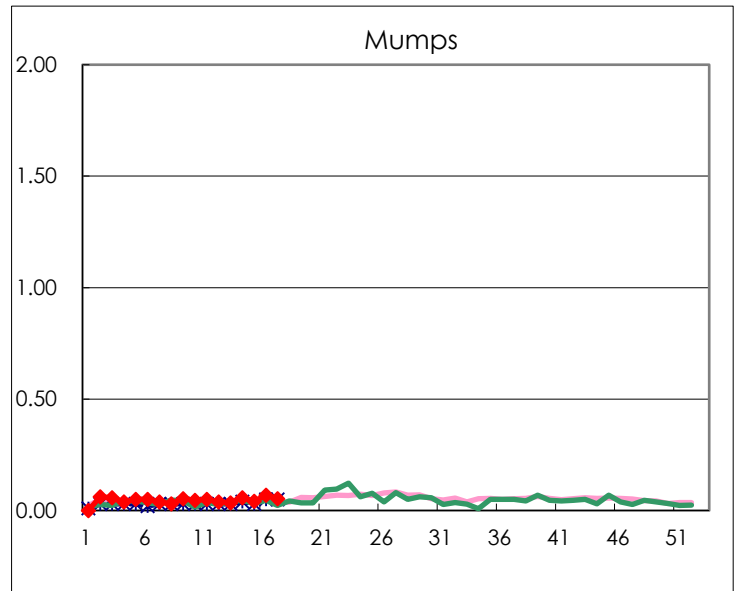
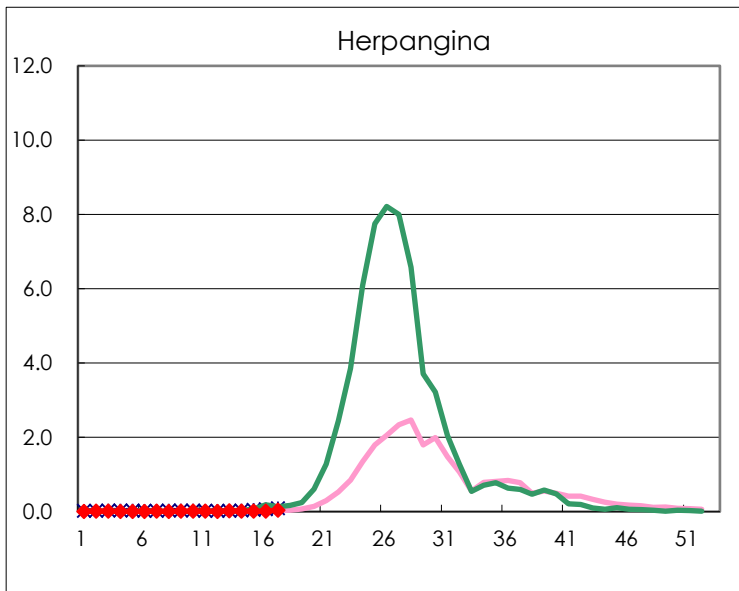
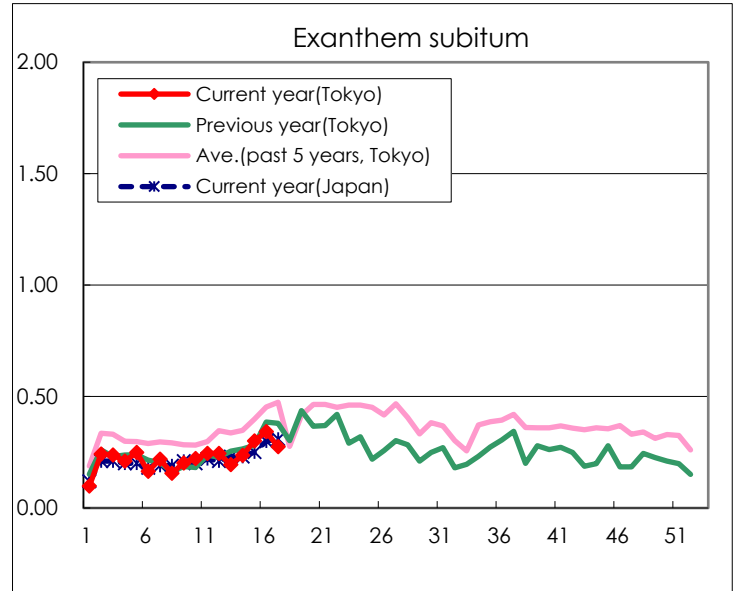
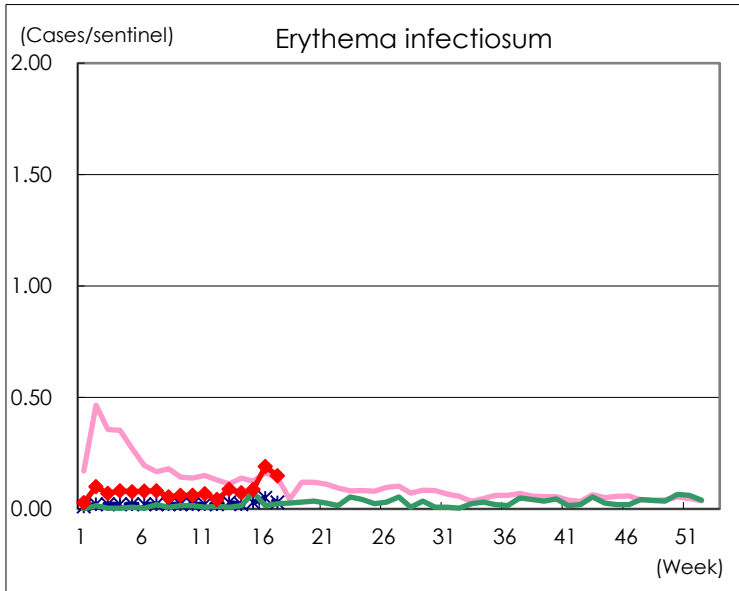
Number of patients with the diseases to be reported  
by the designated clinics and hospitals

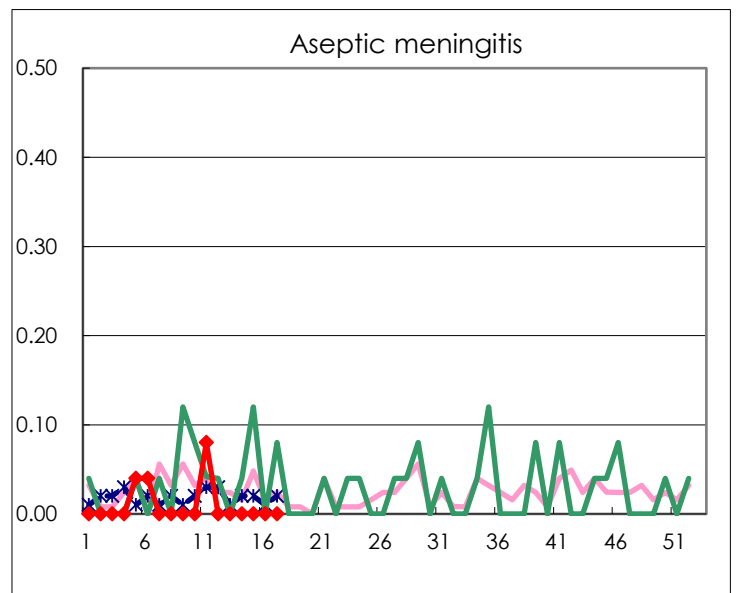
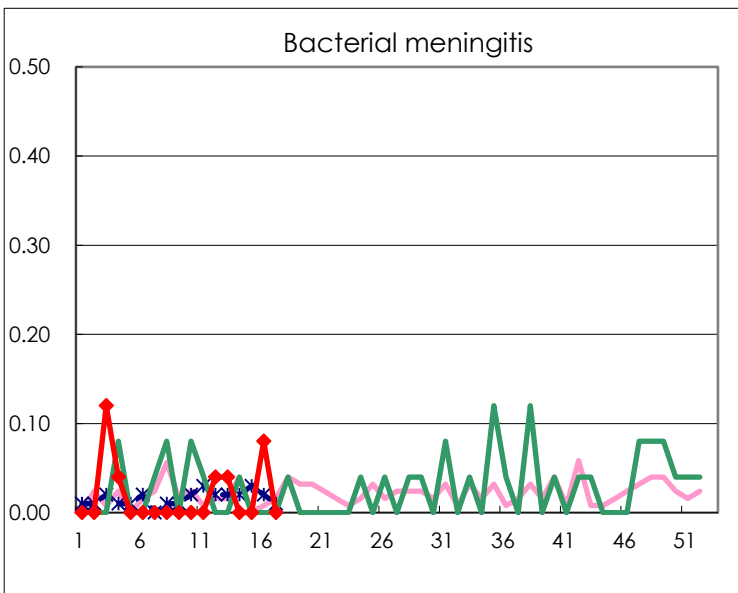
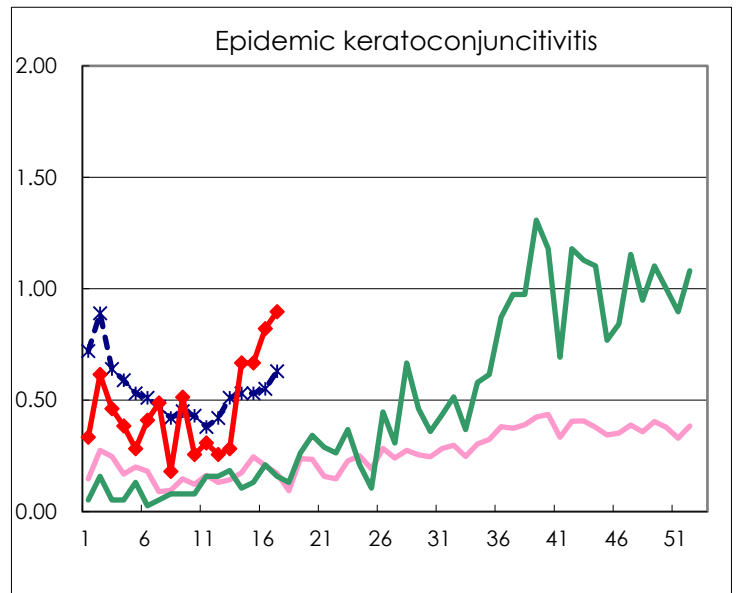
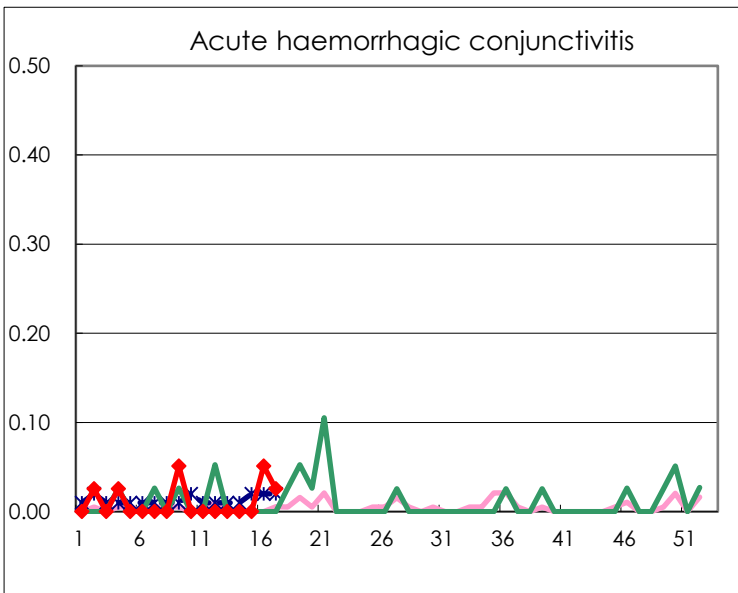
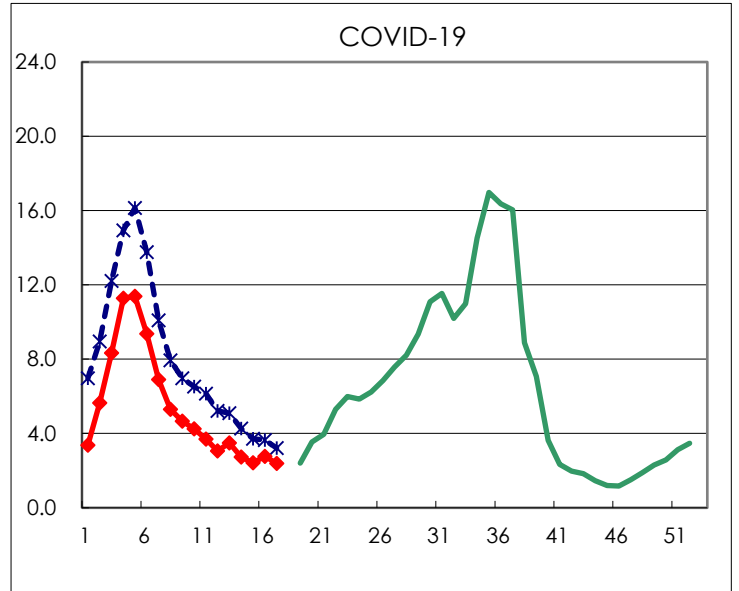
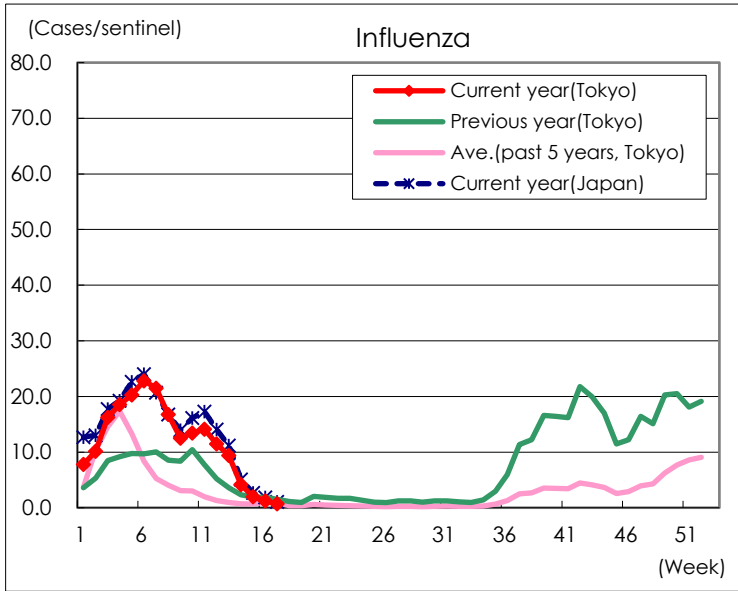
Diseases	Tokyo				
	14th	15th	16th	17th	/sentinel
Respiratory syncytial virus infection	243	425	540	483	1.84
Pharyngoconjunctival fever	53	69	68	94	0.36
Group A streptococcal pharyngitis	665	751	932	1,072	4.09
Infectious gastroenteritis	1,010	1,031	1,183	1,284	4.90
Chickenpox	41	49	34	49	0.19
Hand, foot, and mouth disease	25	11	22	26	0.10
Erythema infectiosum	19	23	50	39	0.15
Exanthem subitum	62	79	90	72	0.27
Herpangina	3	4	3	10	0.04
Mumps	15	11	18	14	0.05
Kawasaki disease	4	7	2	6	0.02
Cold with exanthems	9	9	5	6	0.02
Influenza	1,744	819	504	298	0.72
COVID-19	1,145	1,010	1,159	995	2.39
Acute hemorrhagic conjunctivitis			2	1	0.03
Epidemic keratoconjunctivitis	26	26	32	35	0.90
Bacterial meningitis			2		
Aseptic meningitis					
Mycoplasma pneumonia		2	2	5	0.20
Chlamydial pneumonia (excluding psittacosis)					
Infectious gastroenteritis (only by Rotavirus)		1			
Influenza-Associated Hospitalizations	11	6	9	2	0.08
COVID-19-Associated Hospitalizations	92	94	76	55	2.20

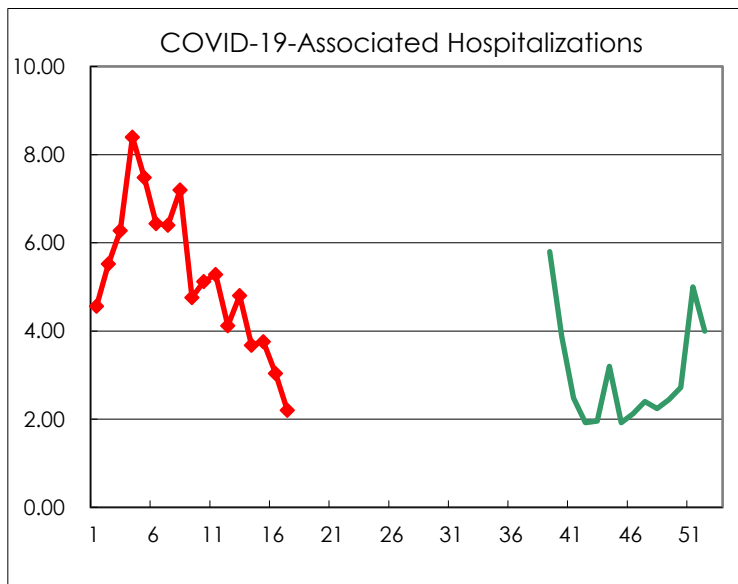
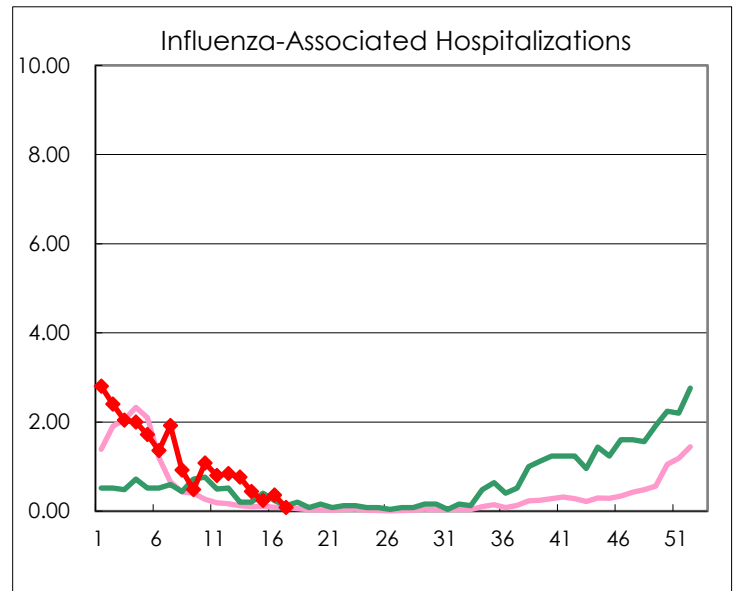
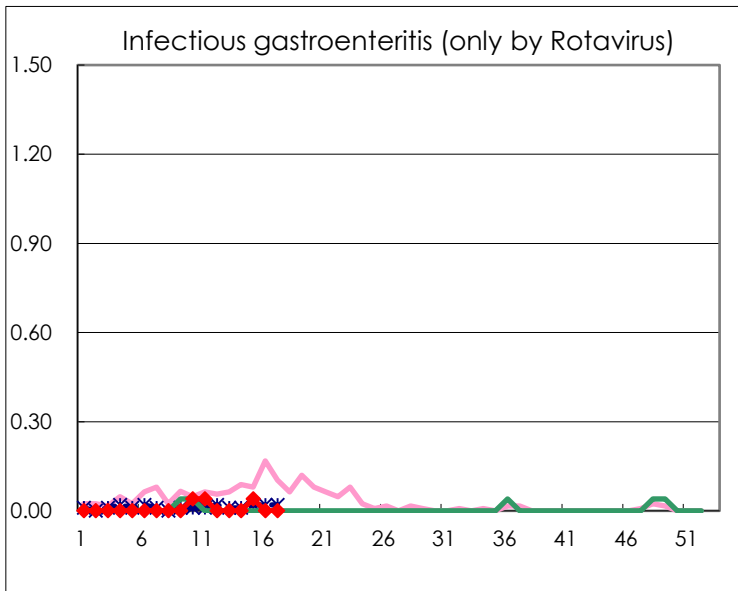
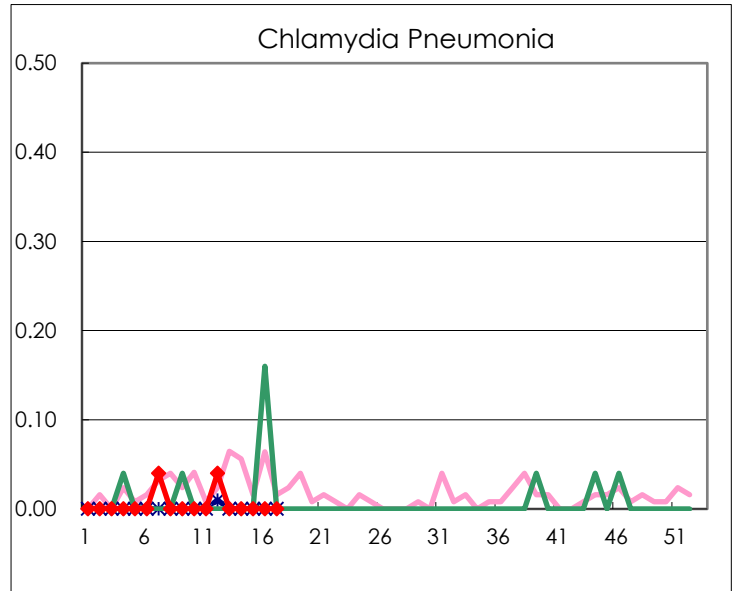
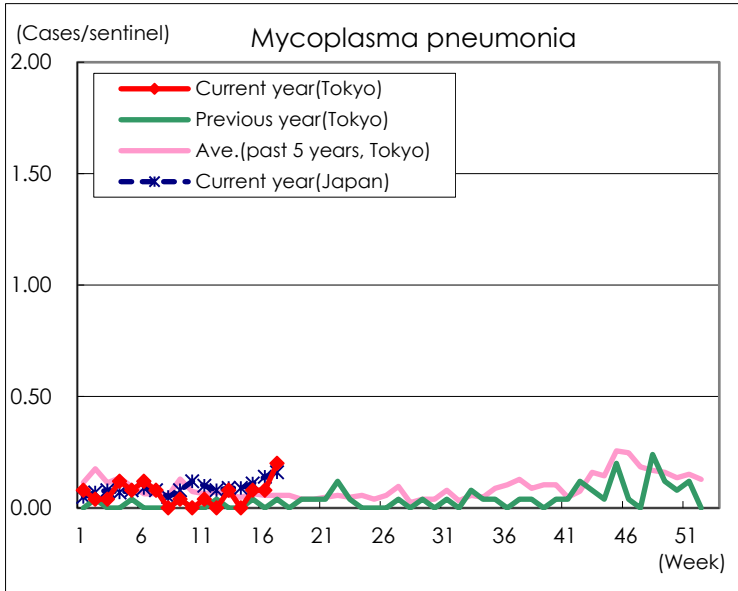
(Blank means 0.)

# Disease Trend Graph (weekly reported cases per sentinel in comparison)









Number of sentinel facilities for weekly reporting		
Types of sentinels	Number of sentinels	Sentinels having reported
Pediatric	264	262
Influenza COVID-19	419	416
Ophthalmic	39	39
Specially-designated	25	25