
INFECTIOUS DISEASES WEEKLY REPORT

TOKYO IDWR

Tokyo Metropolitan Infectious Disease Surveillance Center

16 May 2024 / Number 19
(5/6 ~ 5/12)

Surveillance System in Tokyo, Japan

The infectious diseases which all physicians must report
All physicians must report to health centers the incidence of the diseases which are shown at page one. Health centers electronically report the individual cases to Tokyo Metropolitan Infectious Disease Surveillance Center.

The infectious diseases required to be reported by the sentinels
The numbers of patients who visit the sentinel clinics or hospitals during a week are reported to health centers in Tokyo. And they electronically report the numbers to Tokyo Metropolitan Infectious Disease Surveillance Center. We have about 500 sentinel clinics and hospitals in Tokyo.

Tokyo Metropolitan Institute of Public Health
TEL:81-3-3363-3213 FAX:81-3-5332-7365
e-mail:tmiph@section.metro.tokyo.jp
URL:idsc.tmiph.metro.tokyo.lg.jp/

Number of patients with the diseases which all physicians must report

Category	Diseases	Tokyo					Japan	
		16th	17th	18th	19th	Cum 2024	19th	Cum 2024
I	Ebola hemorrhagic fever							
	Crimean-Congo hemorrhagic fever							
	Smallpox							
	South American hemorrhagic fever							
	Plague							
	Marburg disease							
	Lassa fever							
II	Acute poliomyelitis							
	Tuberculosis	48	36	32	37	709	221	5,248
	Diphtheria							
	Severe Acute Respiratory Syndrome(SARS)							
	Middle East Respiratory Syndrome (MERS)							
	Avian influenza H5N1							
	Avian influenza H7N9							
III	Cholera							
	Shigellosis					3		20
	Enterohemorrhagic Escherichia coli infection	5	2	3	3	49	29	501
	Typhoid fever	1				2	2	14
	Paratyphoid fever					2		3
IV	Hepatitis E	2	3	2		48	4	189
	West Nile fever							
	Hepatitis A		2	1	3	10	9	59
	Echinococcosis							3
	Mpox			1		11		13
	Yellow fever							
	Psittacosis							
	Omsk hemorrhagic fever							
	Relapsing fever							1
	Kyasanur forest disease							
	Q fever							6
	Rabies							
	Coccidioidomycosis	1				1		1
	Zika virus infection							
	Severe Fever with Thrombocytopenia Syndrome						4	36
	Hemorrhagic fever with renal syndrome							
	Western equine encephalitis							
	Tick-borne encephalitis							
	Anthrax							
	Chikungunya fever							
	Scrub typhus(Tsutsugamushi disease)						4	70
	Dengue fever		1		3	18	5	64
	Eastern equine encephalitis							
	Avian influenza (excluding H5N1 and H7N9)							
	Nipah virus infection							
	Japanese spotted fever						15	60
	Japanese encephalitis							1
	Hantavirus pulmonary syndrome							
	Herpes B virus infection							
	Glanders							
	Brucellosis							
	Venezuelan equine encephalitis							
	Hendra virus infection							
Epidemic typhus								
Botulism								
Malaria		1			3		11	
Tularemia								
Lyme disease							1	
Lyssavirus infection(excluding rabies)								
Rift valley fever								
Melioidosis								
Legionellosis	1	3		1	45	38	579	
Leptospirosis						1	2	
Rocky mountain spotted fever								

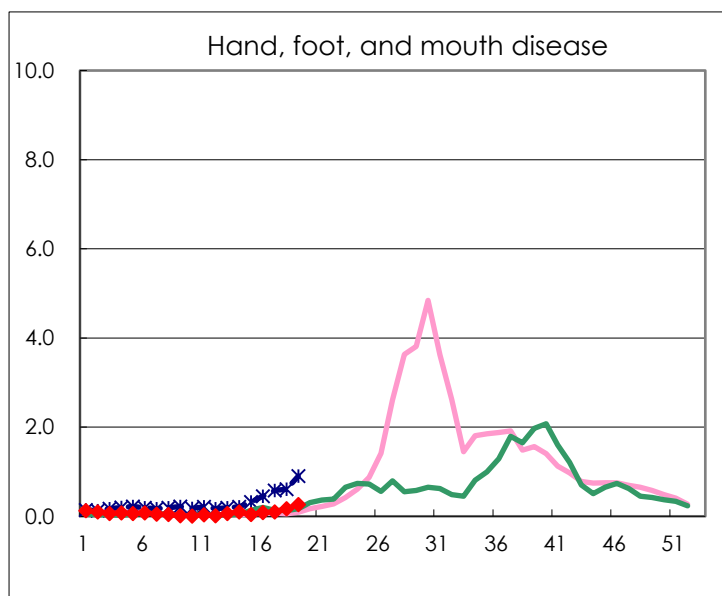
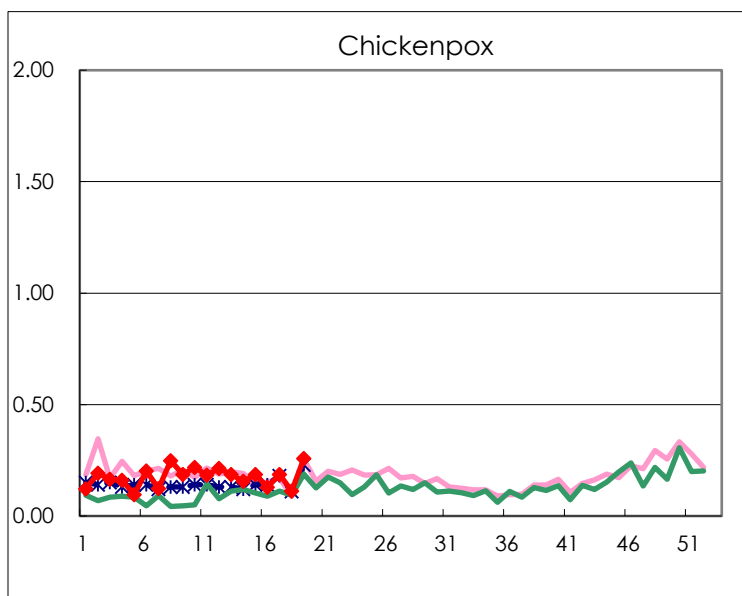
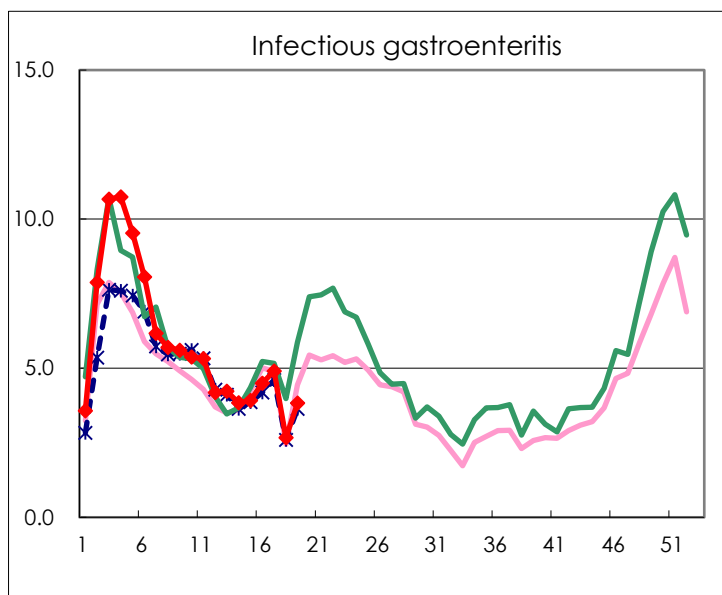
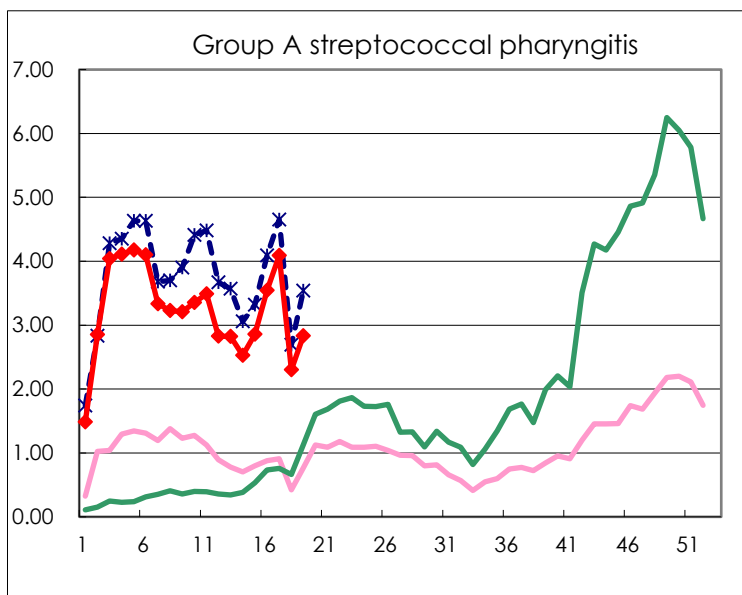
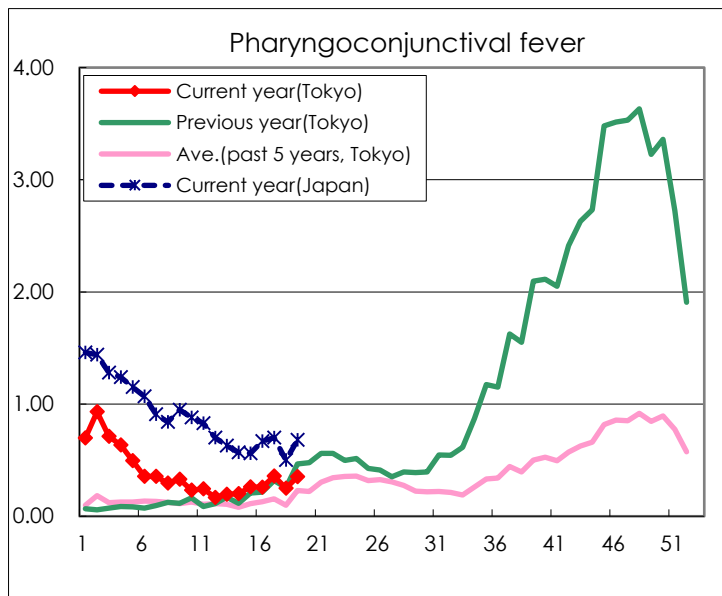
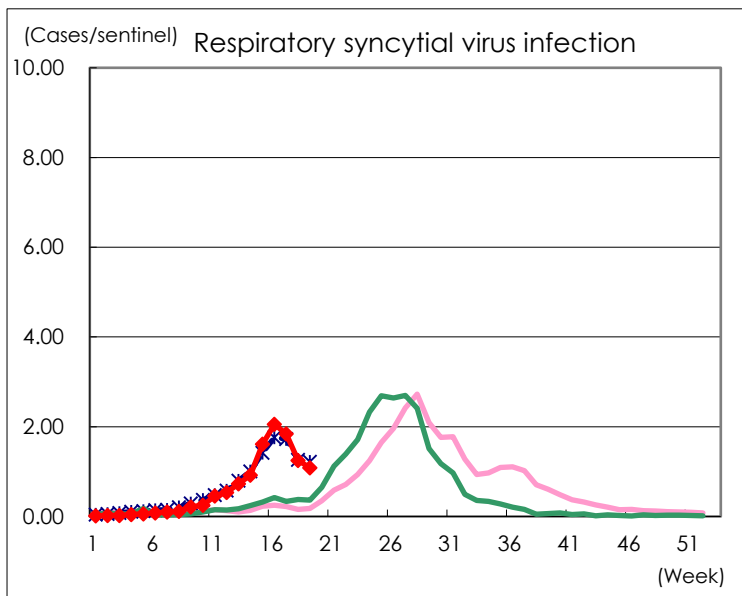
Category	Diseases	Tokyo				Japan		
		16th	17th	18th	19th	Cum 2024	19th	Cum 2024
V	Amebiasis	2	4	2		42	5	196
	Viral hepatitis(excluding hepatitis A and E)	2				14	3	69
	CRE infection	5	3	3	3	64	30	668
	Acute Flaccid Paralysis (excluding Acute poliomyelitis)					2	1	13
	Acute encephalitis(excluding JE and WNE)	1	1		4	20	5	227
	Cryptosporidiosis				1	4	1	11
	Creutzfeldt-Jakob disease					7	2	61
	Severe invasive streptococcal infections(TSLS)	5	8	5	7	136	36	851
	Acquired immunodeficiency syndrome (AIDS)	4	5	3	5	97	16	335
	Giardiasis					5	1	17
	Invasive <i>Haemophilus influenzae</i> disease	3			1	18	8	237
	Invasive meningococcal disease		1			2	1	16
	Invasive pneumococcal disease	6	7	9	7	119	52	1,035
	Varicella (limited to hospitalized case)	1	1	2	1	24	7	167
	Congenital rubella syndrome							
	Syphilis	73	90	58	48	1,203	160	4,629
	Disseminated cryptococcosis					8	1	80
	Tetanus				1	1	4	25
	Vancomycin-resistant <i>S. aureus</i> infection							
	Vancomycin-resistant <i>Enterococcus</i> infection		1			2	3	47
	Pertussis	1	4	3	2	28	19	286
Rubella							3	
Measles					6		21	
MDRA infection							1	

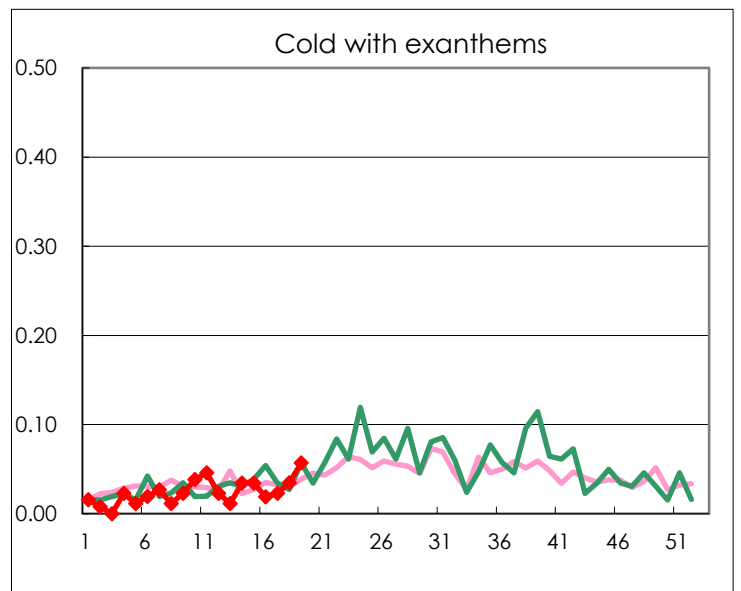
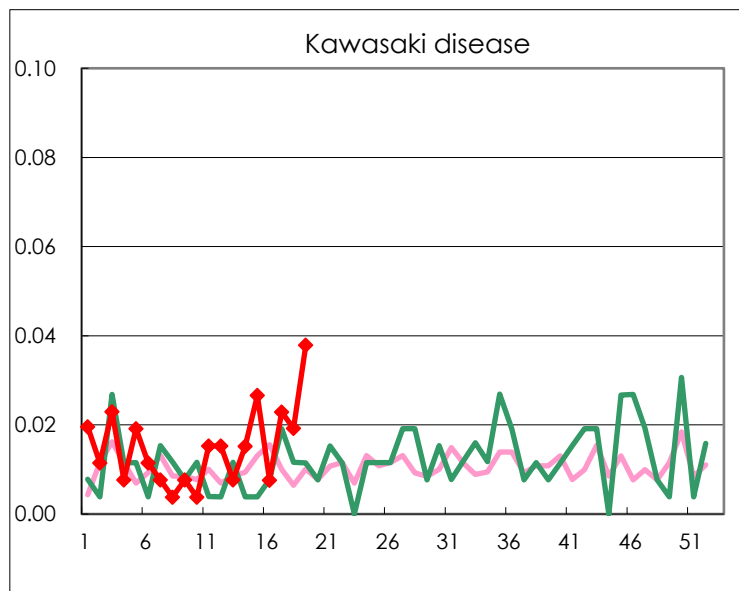
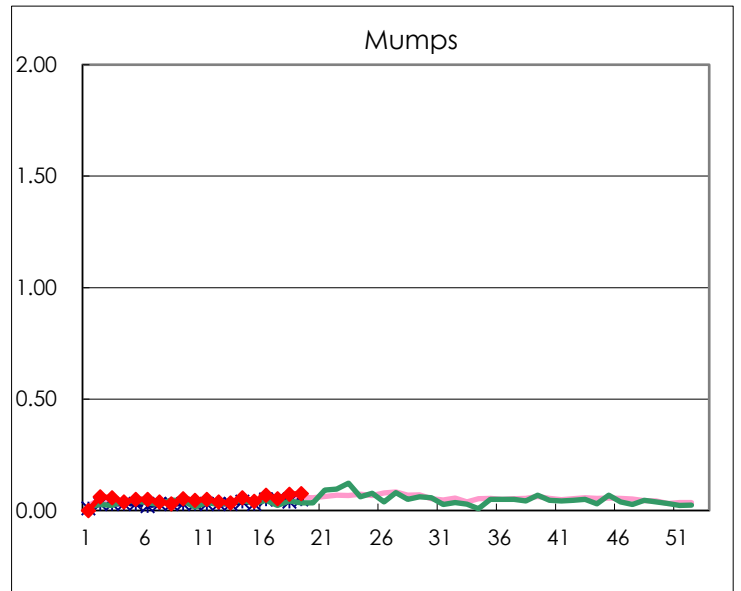
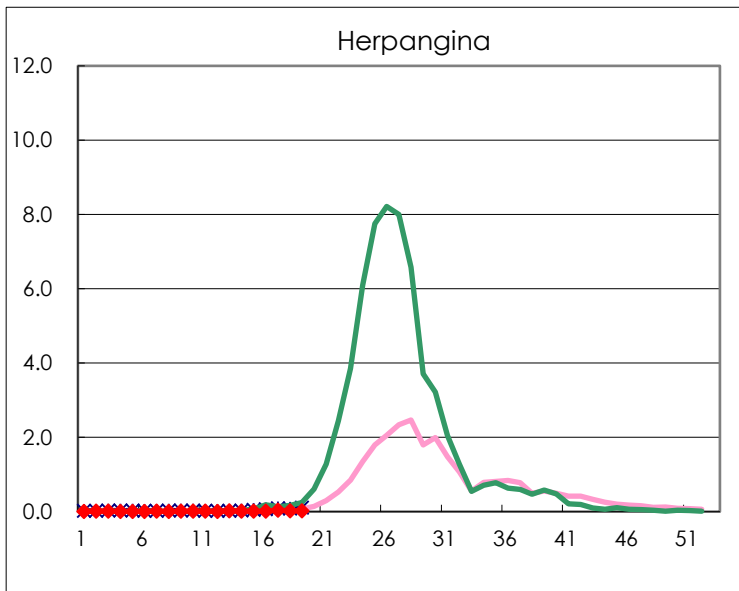
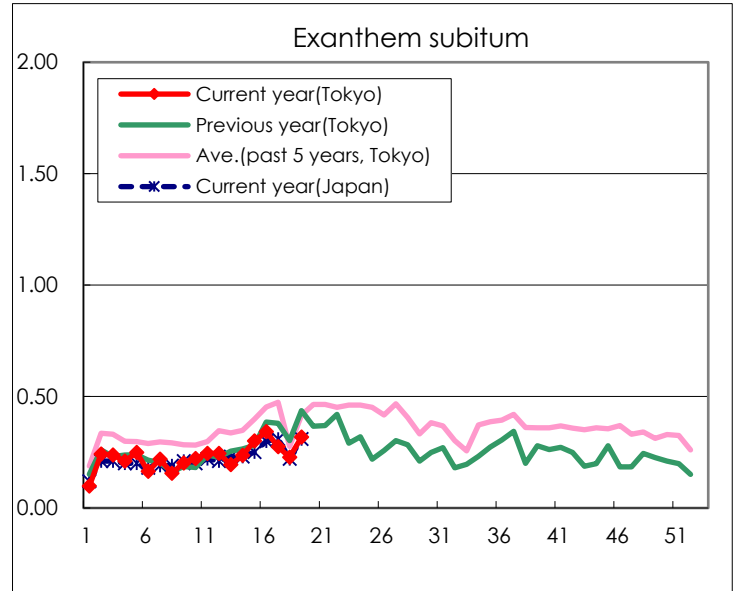
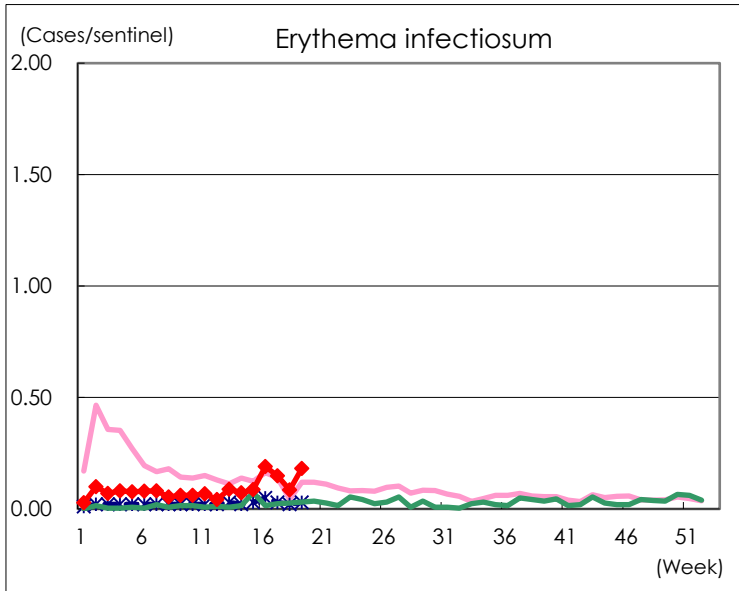
Number of patients with the diseases to be reported
by the designated clinics and hospitals

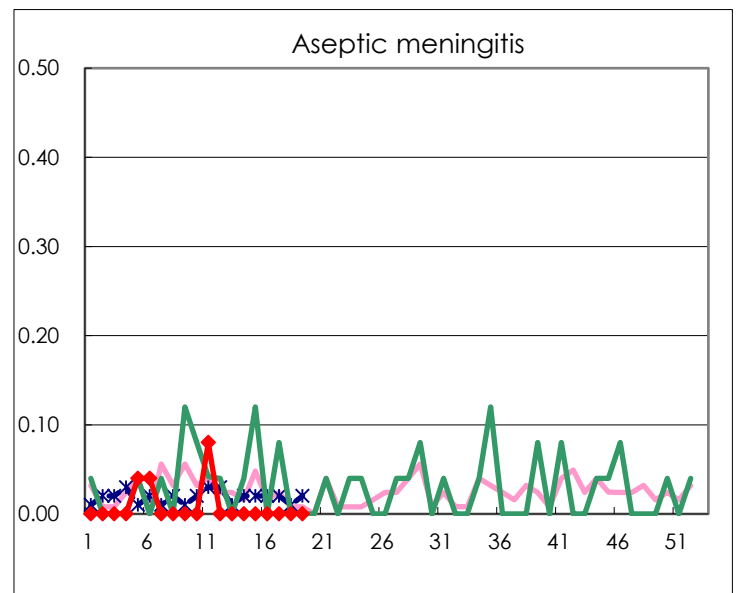
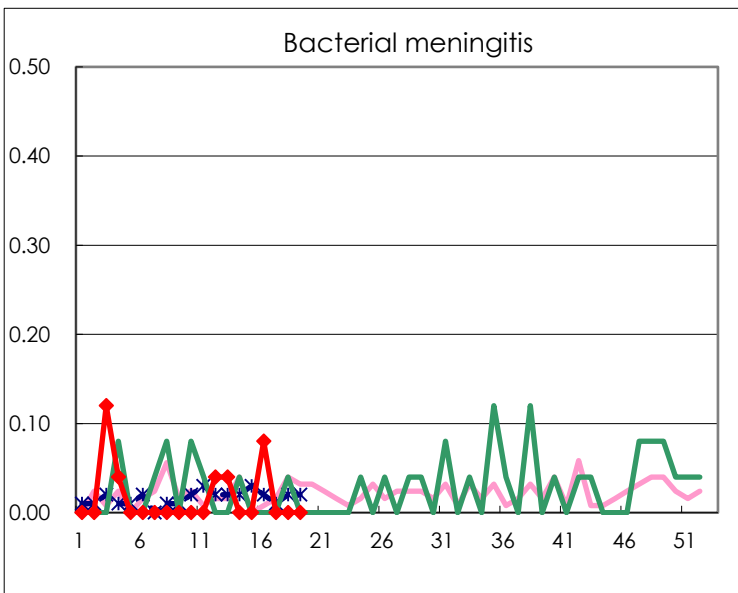
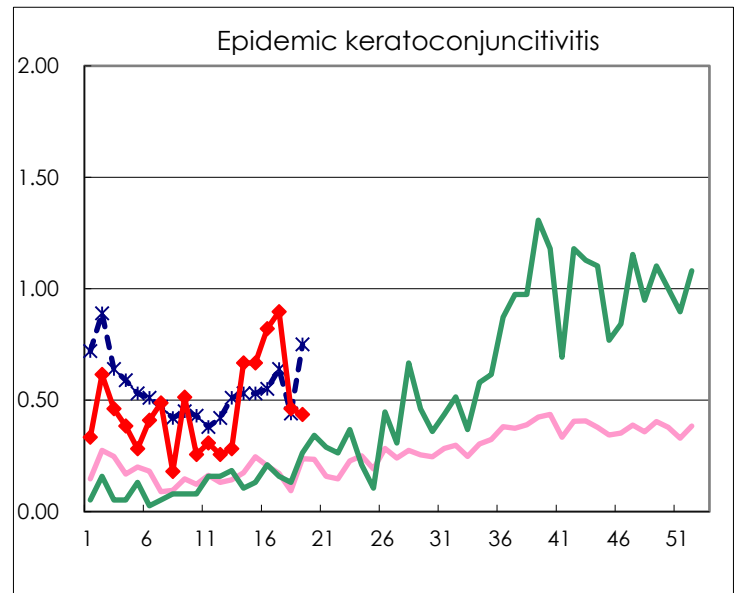
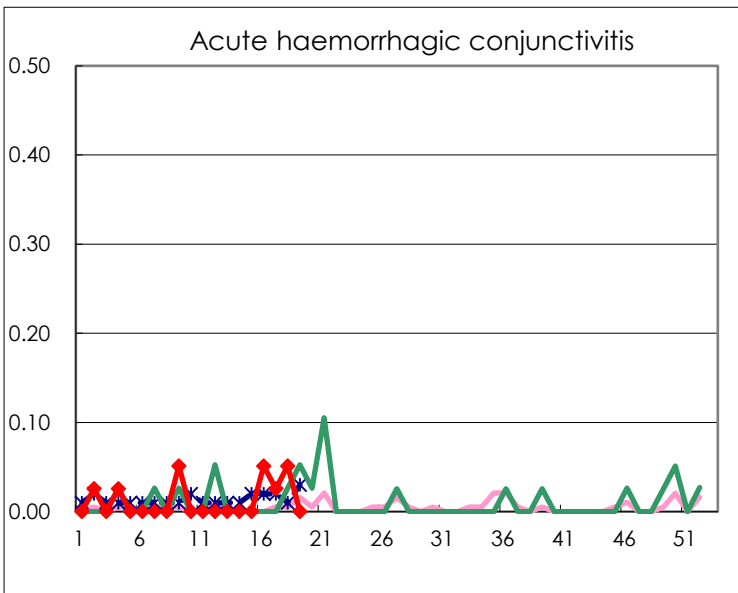
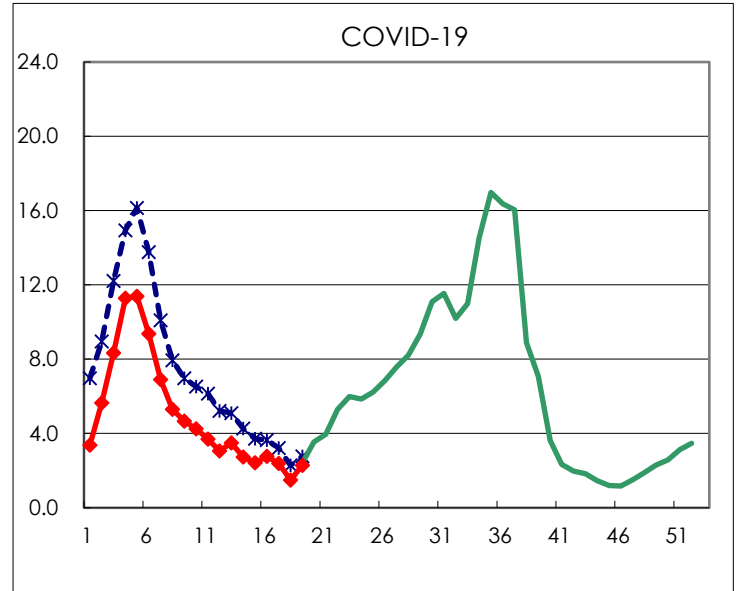
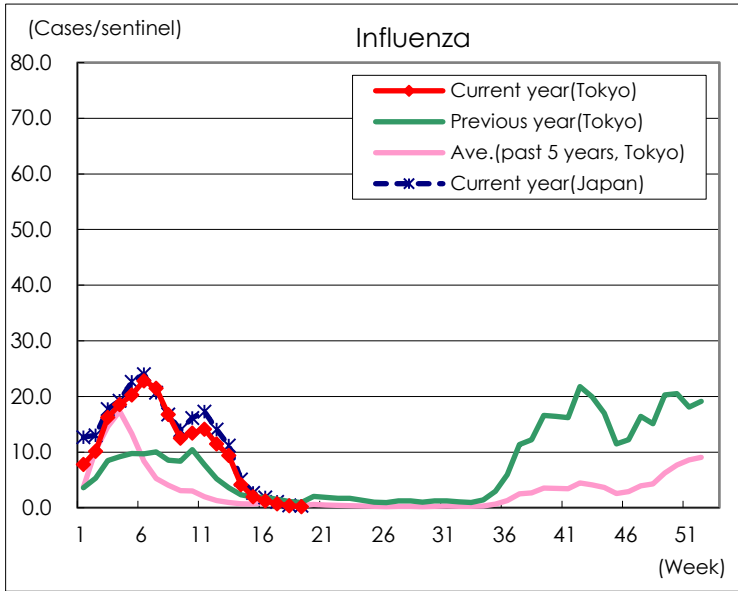
Diseases	Tokyo				
	16th	17th	18th	19th	/sentinel
Respiratory syncytial virus infection	540	483	325	286	1.08
Pharyngoconjunctival fever	68	94	65	93	0.35
Group A streptococcal pharyngitis	932	1,072	598	748	2.83
Infectious gastroenteritis	1,183	1,284	694	1,012	3.83
Chickenpox	34	49	29	68	0.26
Hand, foot, and mouth disease	22	26	45	70	0.27
Erythema infectiosum	50	39	22	48	0.18
Exanthem subitum	90	72	59	84	0.32
Herpangina	3	10	6	5	0.02
Mumps	18	14	19	20	0.08
Kawasaki disease	2	6	5	10	0.04
Cold with exanthems	5	6	9	15	0.06
Influenza	504	298	142	82	0.20
COVID-19	1,159	995	612	955	2.28
Acute hemorrhagic conjunctivitis	2	1	2		
Epidemic keratoconjunctivitis	32	35	18	17	0.44
Bacterial meningitis	2				
Aseptic meningitis					
Mycoplasma pneumonia	2	5	2	4	0.16
Chlamydial pneumonia (excluding psittacosis)				1	0.04
Infectious gastroenteritis (only by Rotavirus)					
Influenza-Associated Hospitalizations	9	2	1	2	0.08
COVID-19-Associated Hospitalizations	76	55	59	77	3.08

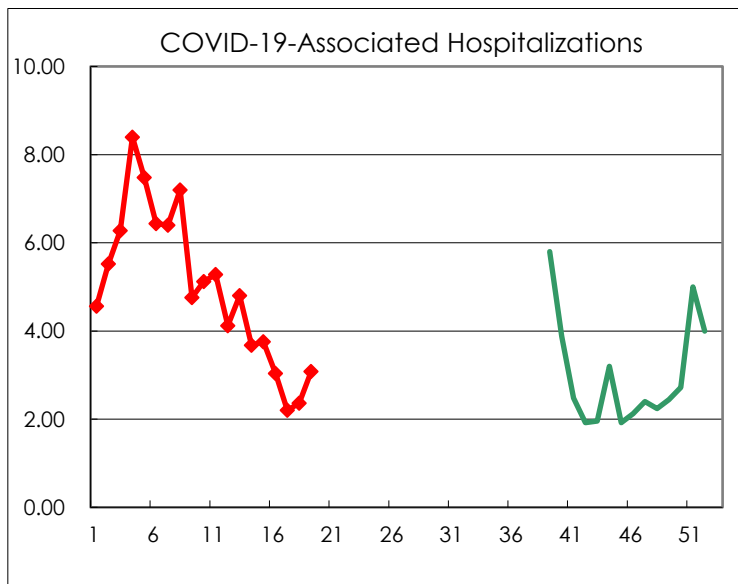
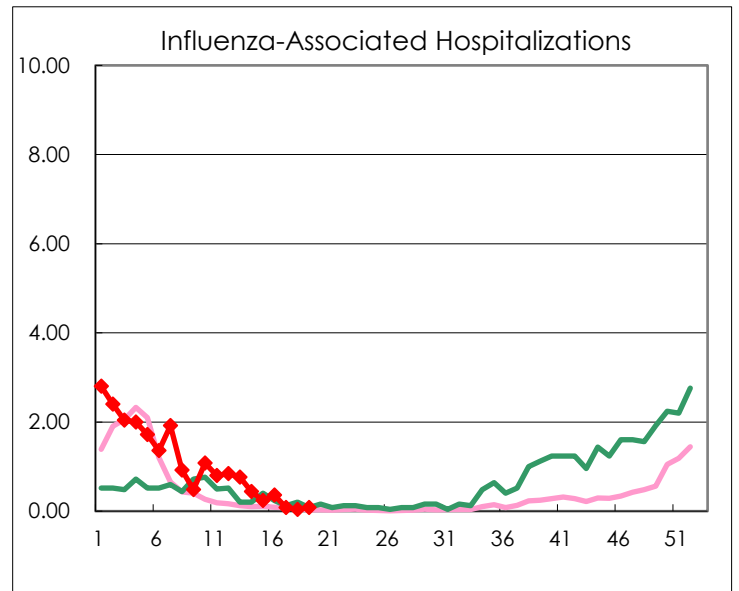
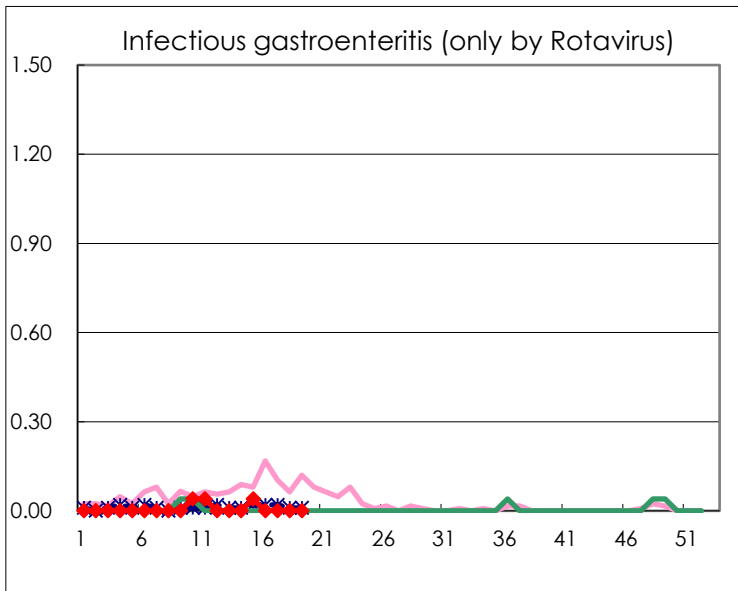
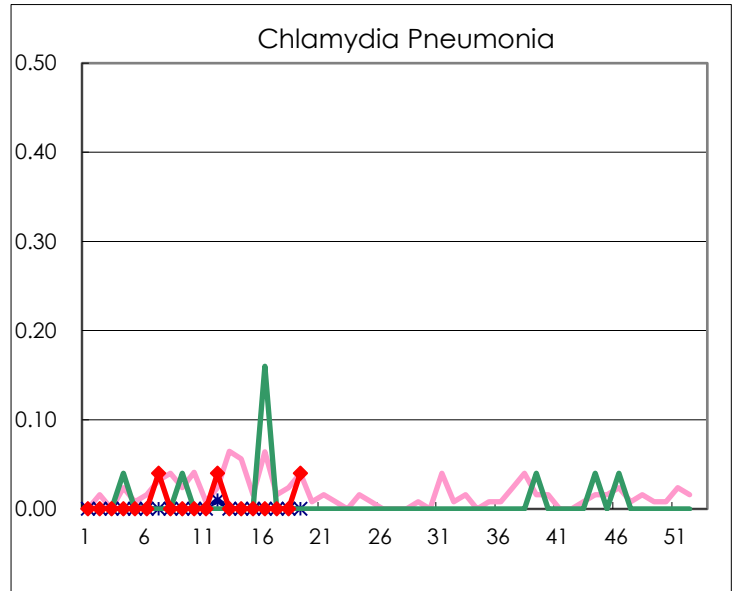
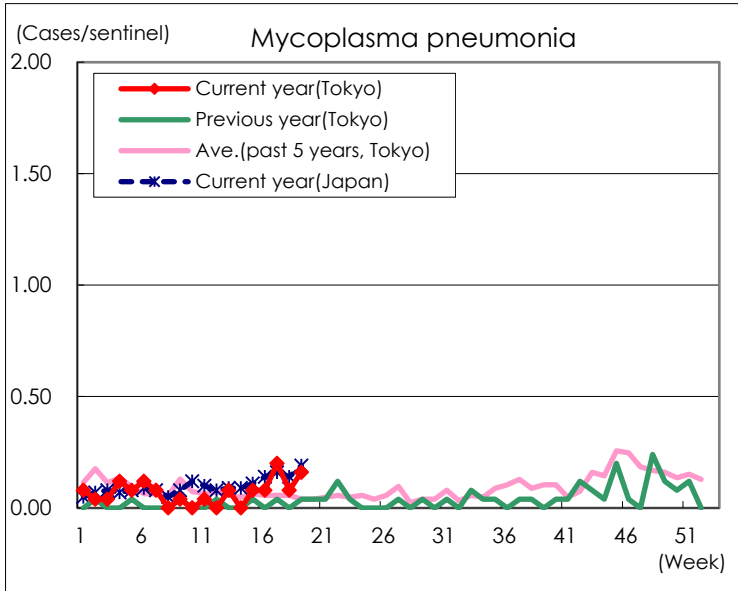
(Blank means 0.)

Disease Trend Graph (weekly reported cases per sentinel in comparison)









Number of sentinel facilities for weekly reporting		
Types of sentinels	Number of sentinels	Sentinels having reported
Pediatric	264	264
Influenza COVID-19	419	419
Ophthalmic	39	39
Specially-designated	25	25