
INFECTIOUS DISEASES WEEKLY REPORT

TOKYO IDWR

Tokyo Metropolitan Infectious Disease Surveillance Center

30 May 2024 / Number 21
(5/20 ~ 5/26)

Surveillance System in Tokyo, Japan

The infectious diseases which all physicians must report
All physicians must report to health centers the incidence of the diseases which are shown at page one. Health centers electronically report the individual cases to Tokyo Metropolitan Infectious Disease Surveillance Center.

The infectious diseases required to be reported by the sentinels
The numbers of patients who visit the sentinel clinics or hospitals during a week are reported to health centers in Tokyo. And they electronically report the numbers to Tokyo Metropolitan Infectious Disease Surveillance Center. We have about 500 sentinel clinics and hospitals in Tokyo.

Tokyo Metropolitan Institute of Public Health

TEL:81-3-3363-3213 FAX:81-3-5332-7365

e-mail:tmiph@section.metro.tokyo.jp

URL:idsc.tmiph.metro.tokyo.lg.jp/

Number of patients with the diseases which all physicians must report

Category	Diseases	Tokyo					Japan	
		18th	19th	20th	21st	Cum 2024	21st	Cum 2024
I	Ebola hemorrhagic fever							
	Crimean-Congo hemorrhagic fever							
	Smallpox							
	South American hemorrhagic fever							
	Plague							
	Marburg disease							
	Lassa fever							
II	Acute poliomyelitis							
	Tuberculosis	32	38	44	45	800	246	5,902
	Diphtheria							
	Severe Acute Respiratory Syndrome(SARS)							
	Middle East Respiratory Syndrome (MERS)							
	Avian influenza H5N1							
	Avian influenza H7N9							
III	Cholera			2		2		2
	Shigellosis					3	1	21
	Enterohemorrhagic Escherichia coli infection	3	4	9	10	69	62	635
	Typhoid fever					2		14
	Paratyphoid fever					2	1	4
IV	Hepatitis E	2		3	1	52	9	215
	West Nile fever							
	Hepatitis A	1	3	1		11	3	69
	Echinococcosis							4
	Mpox	1		1		12		14
	Yellow fever							
	Psittacosis							
	Omsk hemorrhagic fever							
	Relapsing fever							1
	Kyasanur forest disease							
	Q fever							6
	Rabies							
	Coccidioidomycosis					1		1
	Zika virus infection							
	Severe Fever with Thrombocytopenia Syndrome						10	52
	Hemorrhagic fever with renal syndrome							
	Western equine encephalitis							
	Tick-borne encephalitis							
	Anthrax							
	Chikungunya fever							
	Scrub typhus(Tsutsugamushi disease)						6	88
	Dengue fever		3	1	1	20	5	74
	Eastern equine encephalitis							
	Avian influenza (excluding H5N1 and H7N9)							
	Nipah virus infection							
	Japanese spotted fever						14	95
	Japanese encephalitis							1
	Hantavirus pulmonary syndrome							
	Herpes B virus infection							
	Glanders							
	Brucellosis						1	1
	Venezuelan equine encephalitis							
	Hendra virus infection							
	Epidemic typhus							
Botulism								
Malaria			1		4		13	
Tularemia								
Lyme disease							2	
Lyssavirus infection(excluding rabies)								
Rift valley fever								
Melioidosis								
Legionellosis		3	8		55	32	655	
Leptospirosis							2	
Rocky mountain spotted fever								

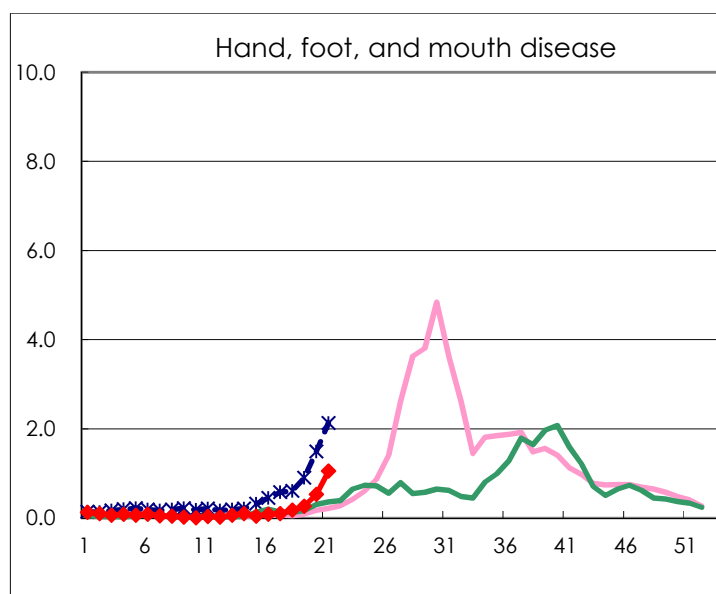
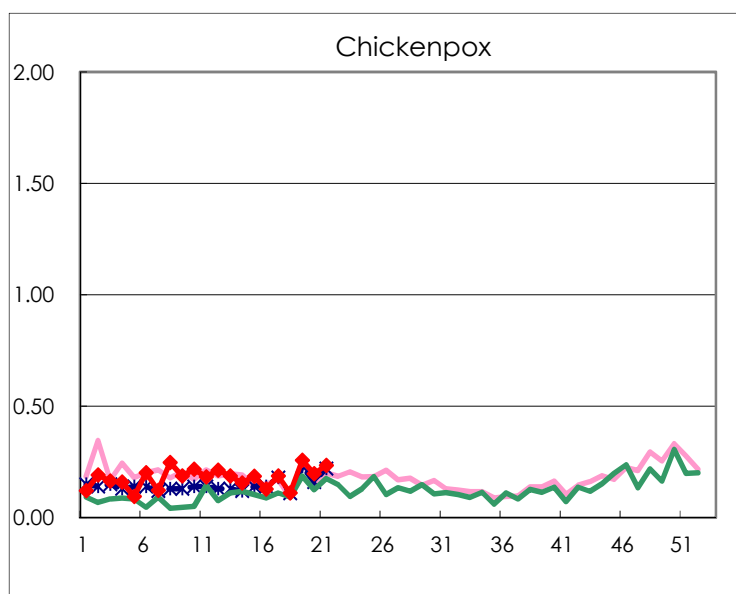
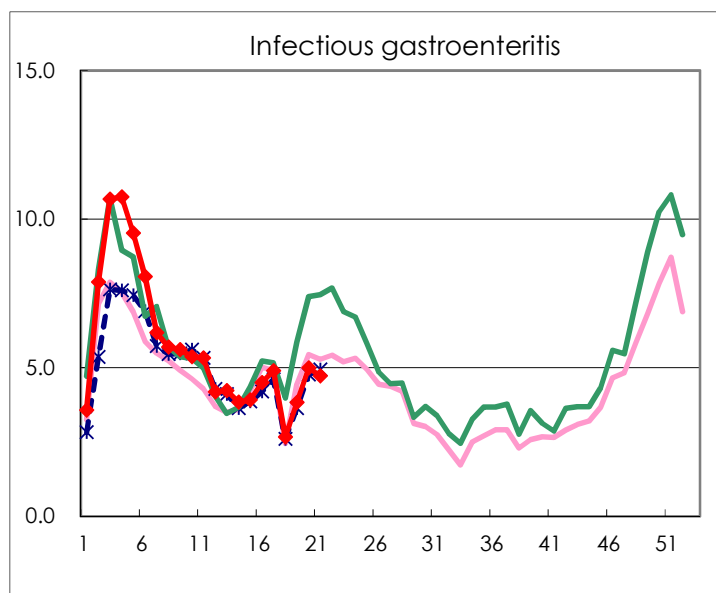
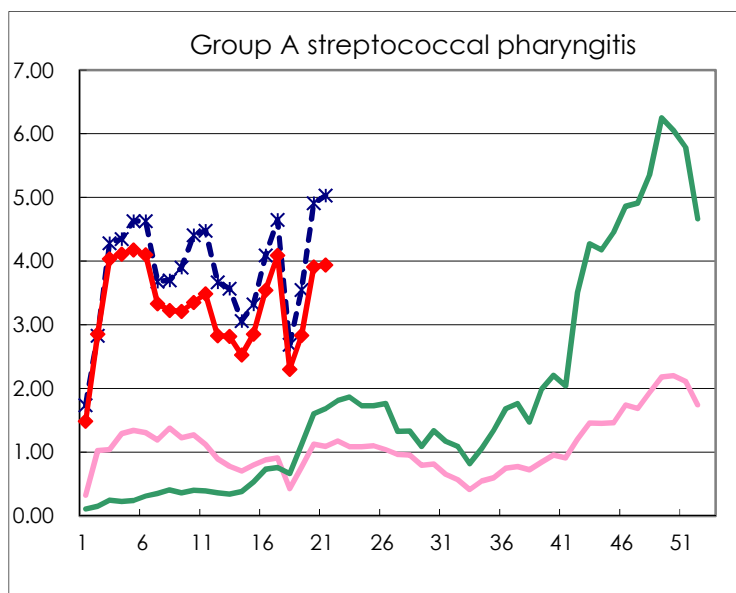
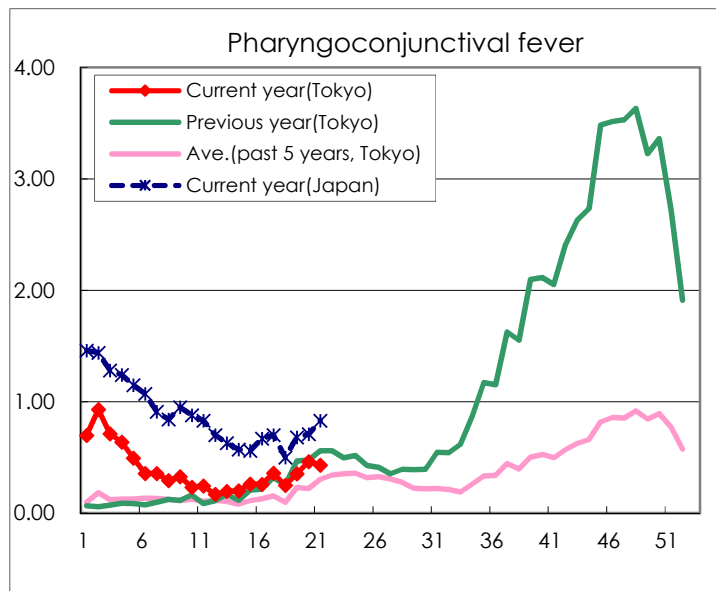
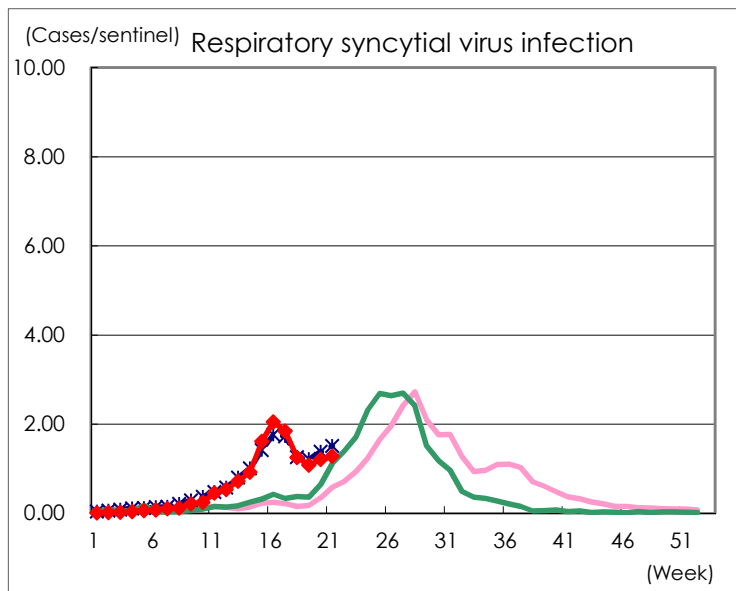
Category	Diseases	Tokyo				Japan		
		18th	19th	20th	21st	Cum 2024	21st	Cum 2024
V	Amebiasis	2		1		43	7	213
	Viral hepatitis(excluding hepatitis A and E)				2	16	6	79
	CRE infection	3	3	2	2	70	33	747
	Acute Flaccid Paralysis (excluding Acute poliomyelitis)					2	1	13
	Acute encephalitis(excluding JE and WNE)		4	2		22	8	244
	Cryptosporidiosis		2			5		12
	Creutzfeldt-Jakob disease					7	2	66
	Severe invasive streptococcal infections(TSLS)	5	7		3	139	30	935
	Acquired immunodeficiency syndrome (AIDS)	3	5	8	4	110	15	374
	Giardiasis					5		17
	Invasive <i>Haemophilus influenzae</i> disease	1	1	3	1	24	15	277
	Invasive meningococcal disease					2	4	21
	Invasive pneumococcal disease	9	8	8	4	134	46	1,170
	Varicella (limited to hospitalized case)	2	1			24	5	181
	Congenital rubella syndrome							
	Syphilis	61	49	92	66	1,366	185	5,251
	Disseminated cryptococcosis					8	5	86
	Tetanus		1			1	3	28
	Vancomycin-resistant <i>S. aureus</i> infection							
	Vancomycin-resistant Enterococcus infection			1		3	3	53
Pertussis	3	2	2	2	32	21	329	
Rubella							3	
Measles				1	7	2	24	
MDRA infection							1	

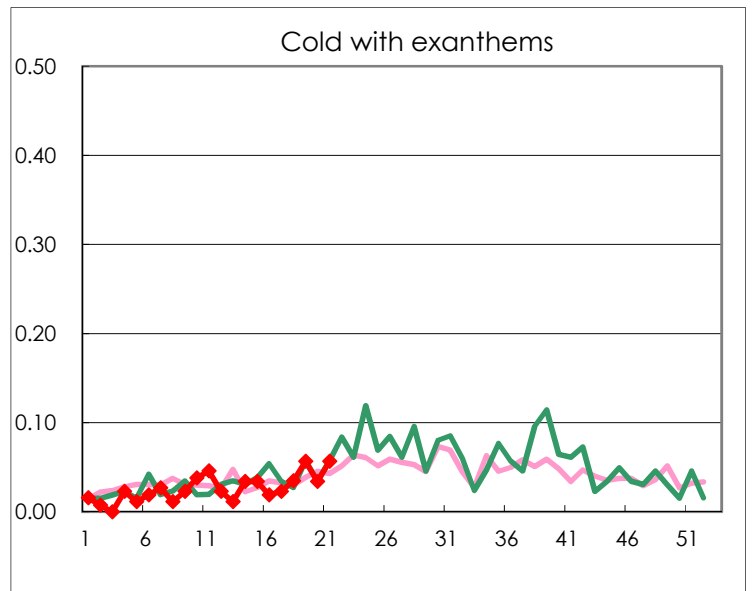
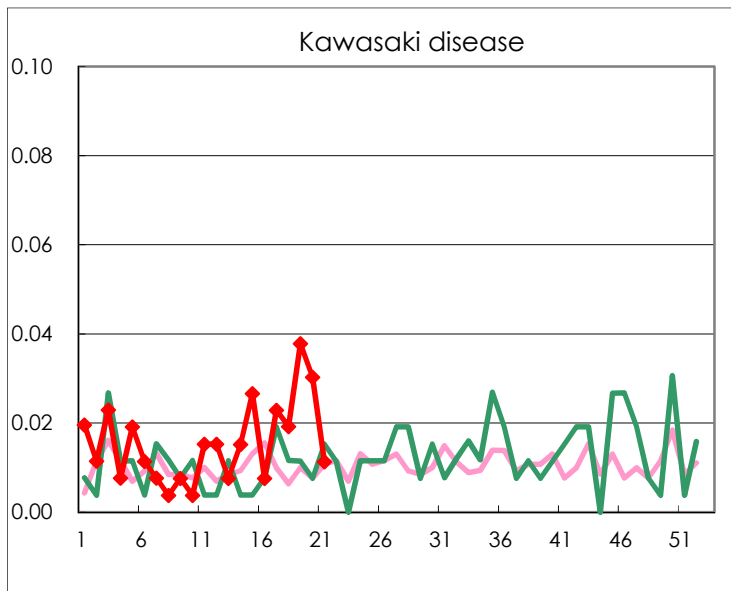
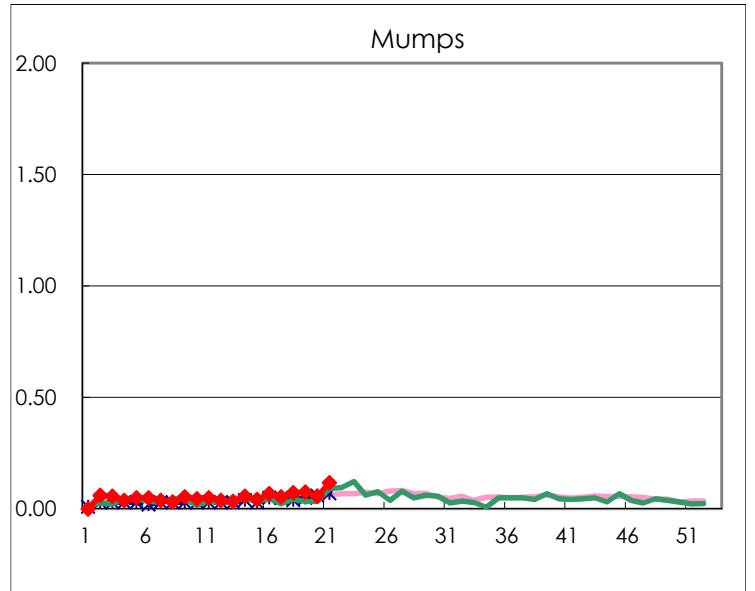
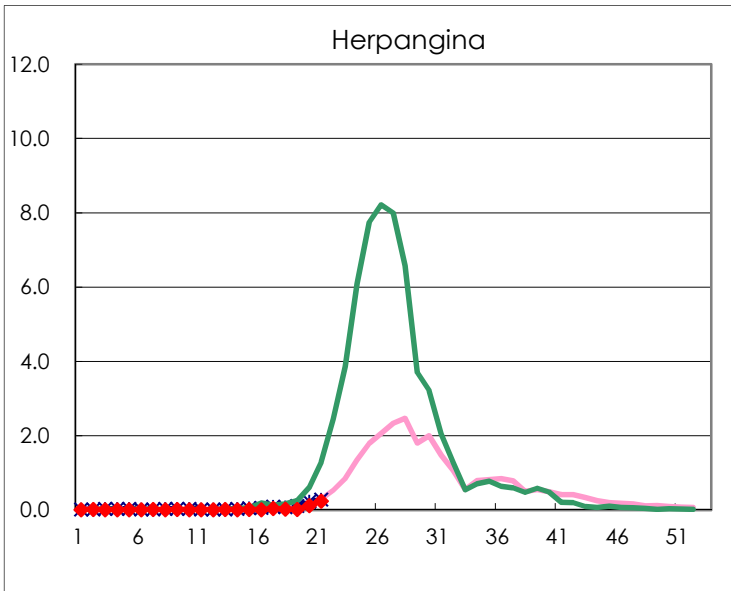
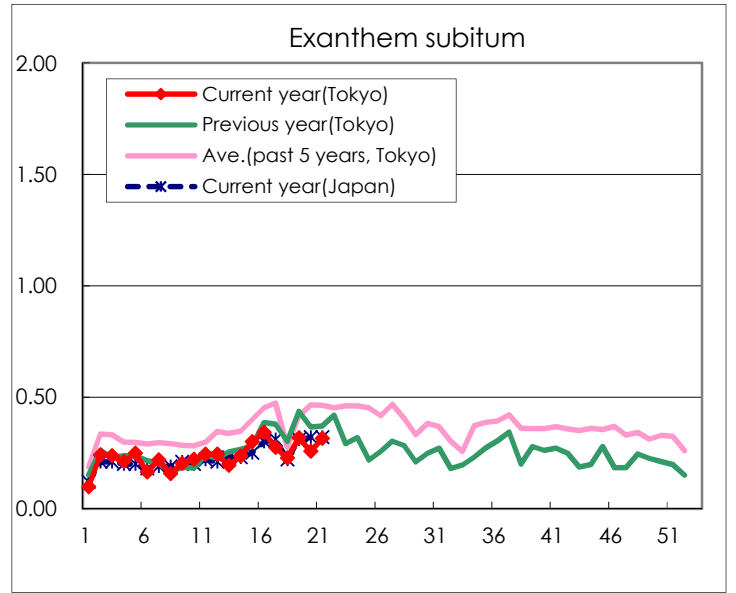
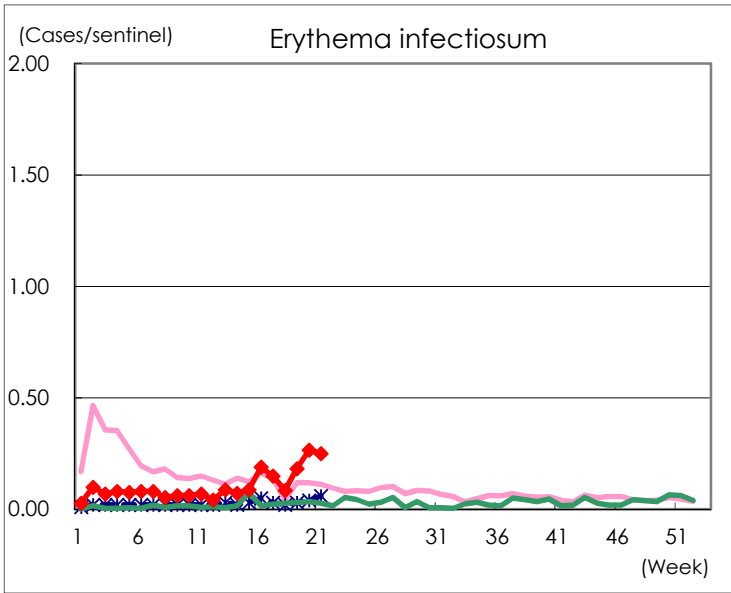
Number of patients with the diseases to be reported
by the designated clinics and hospitals

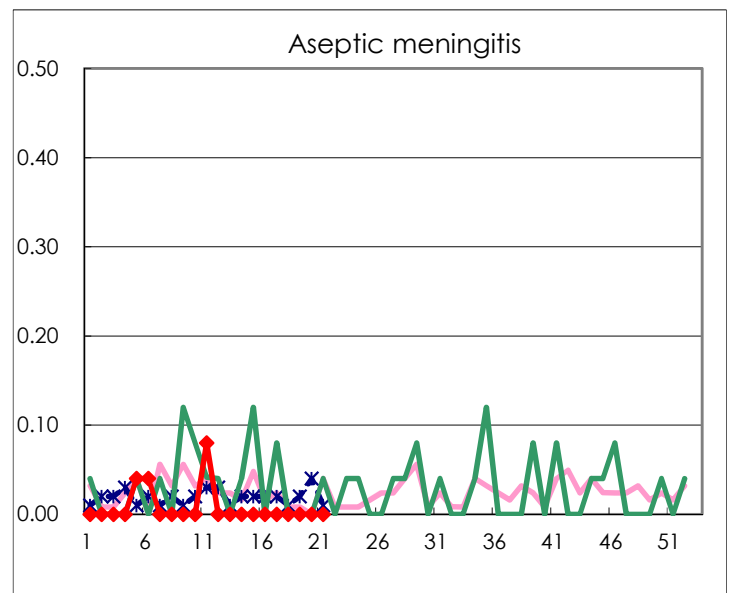
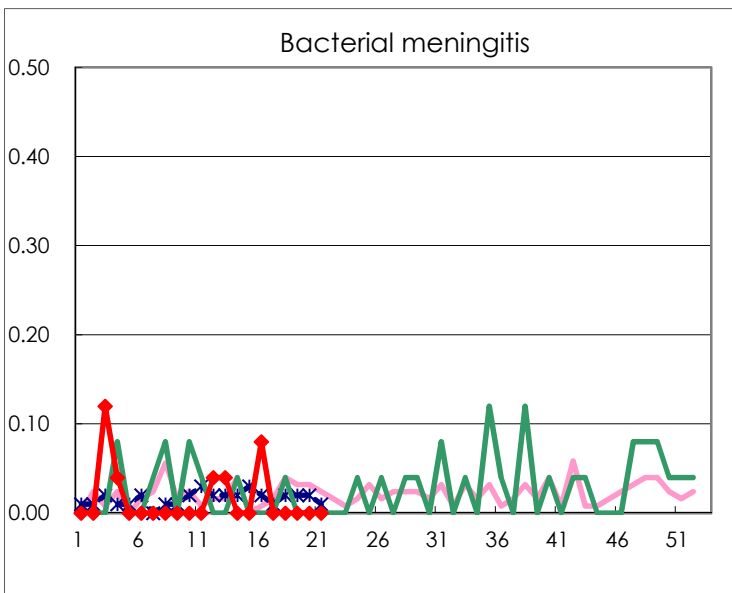
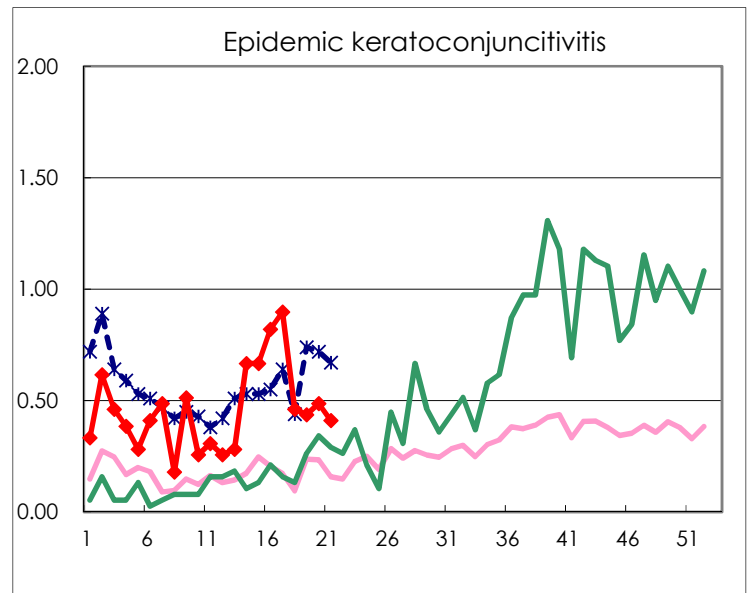
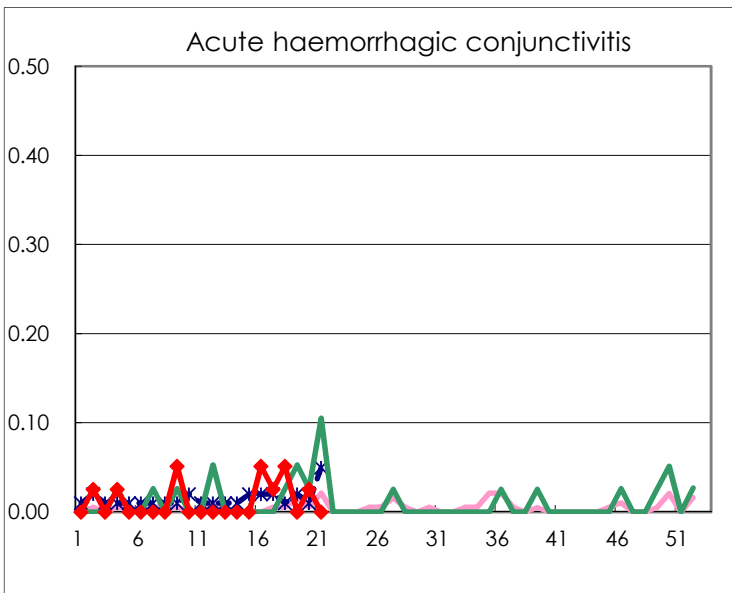
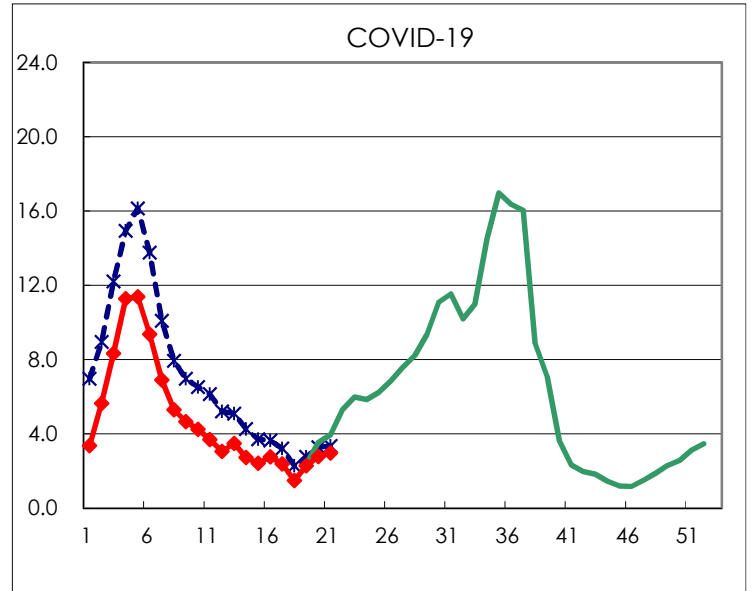
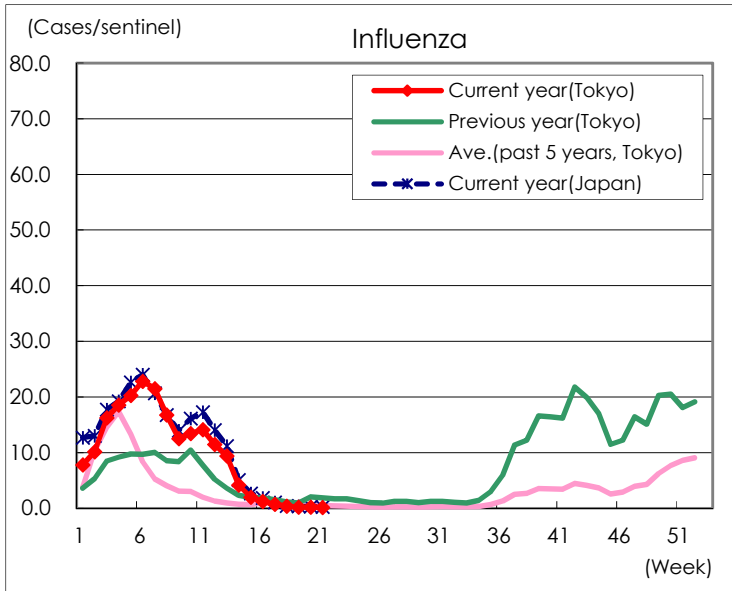
Diseases	Tokyo				
	18th	19th	20th	21st	/sentinel
Respiratory syncytial virus infection	325	286	320	338	1.28
Pharyngoconjunctival fever	65	93	122	114	0.43
Group A streptococcal pharyngitis	598	748	1,033	1,040	3.94
Infectious gastroenteritis	694	1,012	1,317	1,246	4.72
Chickenpox	29	68	52	62	0.23
Hand, foot, and mouth disease	45	70	140	277	1.05
Erythema infectiosum	22	48	70	66	0.25
Exanthem subitum	59	84	68	83	0.31
Herpangina	6	5	31	64	0.24
Mumps	19	20	15	31	0.12
Kawasaki disease	5	10	8	3	0.01
Cold with exanthems	9	15	9	15	0.06
Influenza	142	82	73	60	0.14
COVID-19	612	955	1,164	1,246	2.97
Acute hemorrhagic conjunctivitis	2		1		
Epidemic keratoconjunctivitis	18	17	19	16	0.41
Bacterial meningitis					
Aseptic meningitis					
Mycoplasma pneumonia	2	4	3	11	0.44
Chlamydial pneumonia (excluding psittacosis)		1	1	1	0.04
Infectious gastroenteritis (only by Rotavirus)			1		
Influenza-Associated Hospitalizations	1	2	2	3	0.12
COVID-19-Associated Hospitalizations	59	77	91	84	3.36

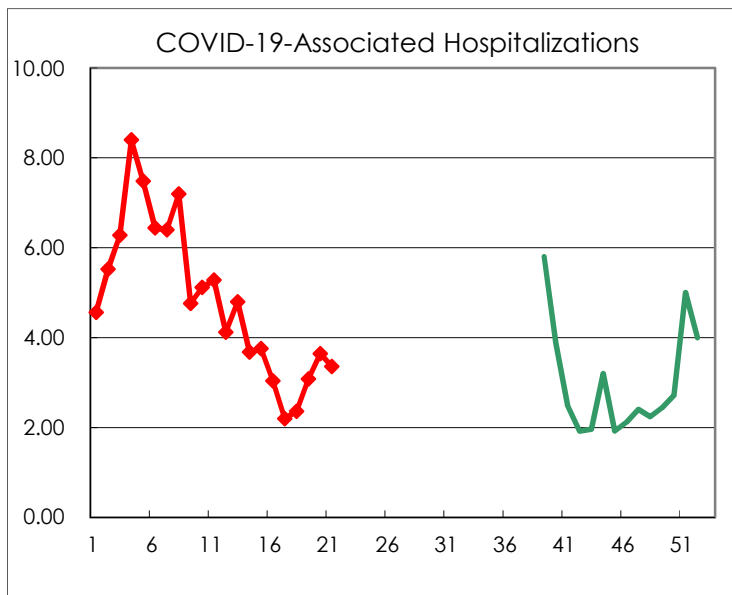
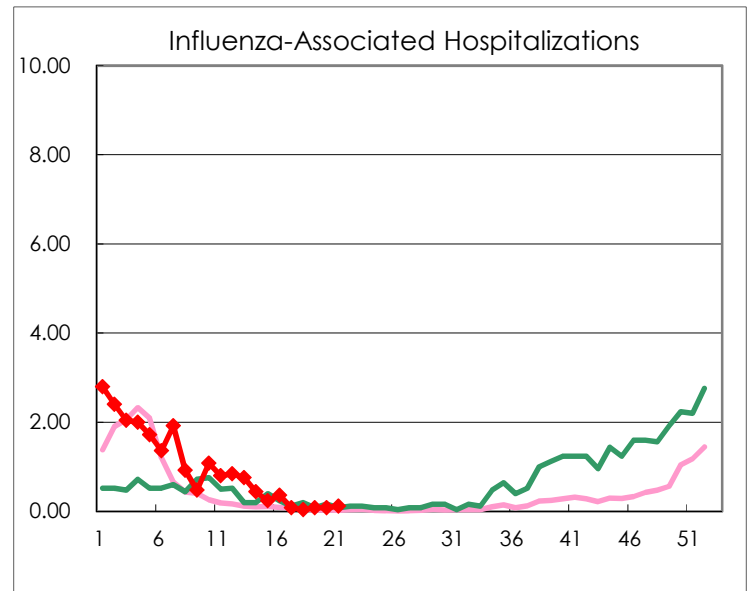
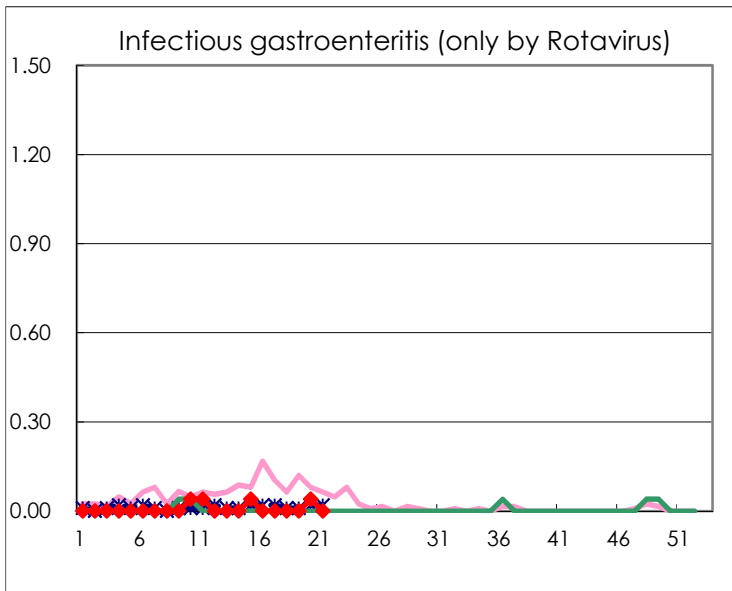
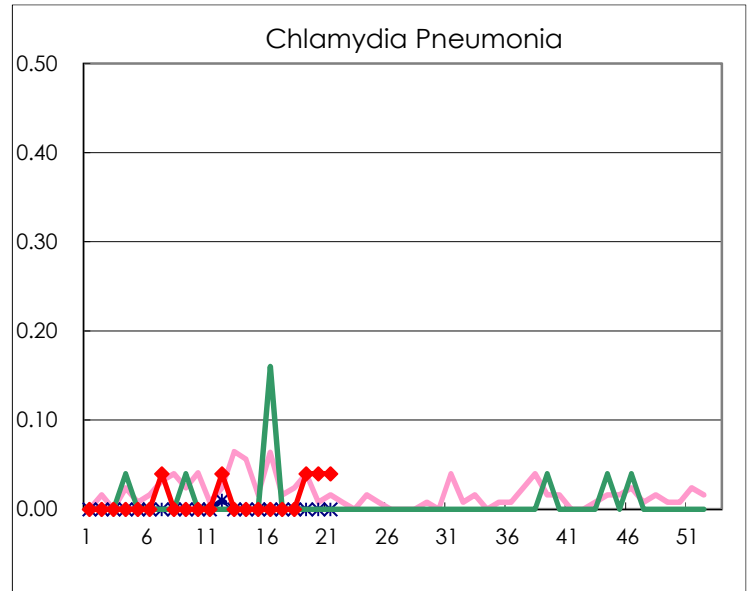
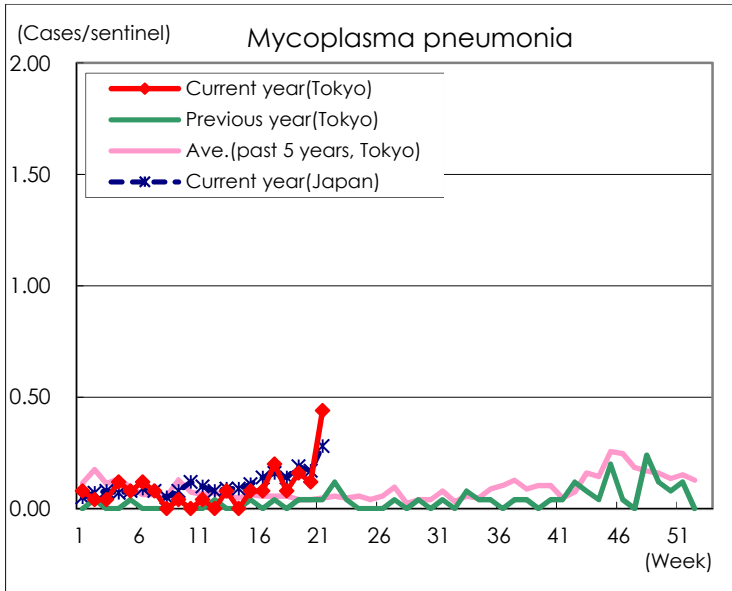
(Blank means 0.)

Disease Trend Graph (weekly reported cases per sentinel in comparison)









Number of sentinel facilities for weekly reporting		
Types of sentinels	Number of sentinels	Sentinels having reported
Pediatric	264	264
Influenza COVID-19	419	419
Ophthalmic	39	39
Specially-designated	25	25