
INFECTIOUS DISEASES WEEKLY REPORT

TOKYO IDWR

Tokyo Metropolitan Infectious Disease Surveillance Center

6 June 2024 / Number 22
(5/27 ~ 6/2)

Surveillance System in Tokyo, Japan

The infectious diseases which all physicians must report
All physicians must report to health centers the incidence of the diseases which are shown at page one. Health centers electronically report the individual cases to Tokyo Metropolitan Infectious Disease Surveillance Center.

The infectious diseases required to be reported by the sentinels
The numbers of patients who visit the sentinel clinics or hospitals during a week are reported to health centers in Tokyo. And they electronically report the numbers to Tokyo Metropolitan Infectious Disease Surveillance Center. We have about 500 sentinel clinics and hospitals in Tokyo.

Tokyo Metropolitan Institute of Public Health

TEL:81-3-3363-3213 FAX:81-3-5332-7365

e-mail:tmiph@section.metro.tokyo.jp

URL:idsc.tmiph.metro.tokyo.lg.jp/

Number of patients with the diseases which all physicians must report

Category	Diseases	Tokyo					Japan	
		19th	20th	21st	22nd	Cum 2024	22nd	Cum 2024
I	Ebola hemorrhagic fever							
	Crimean-Congo hemorrhagic fever							
	Smallpox							
	South American hemorrhagic fever							
	Plague							
	Marburg disease							
	Lassa fever							
II	Acute poliomyelitis							
	Tuberculosis	40	45	45	40	845	267	6,226
	Diphtheria							
	Severe Acute Respiratory Syndrome(SARS)							
	Middle East Respiratory Syndrome (MERS)							
	Avian influenza H5N1							
Avian influenza H7N9								
III	Cholera		2			2		2
	Shigellosis					3		21
	Enterohemorrhagic Escherichia coli infection	4	9	10	4	73	48	685
	Typhoid fever					2		15
	Paratyphoid fever					2		4
IV	Hepatitis E		3	1	3	55	9	226
	West Nile fever							
	Hepatitis A	3	1			11	1	69
	Echinococcosis							4
	Mpox		1			12		14
	Yellow fever							
	Psittacosis							
	Omsk hemorrhagic fever							
	Relapsing fever						1	2
	Kyasanur forest disease							
	Q fever							6
	Rabies							
	Coccidioidomycosis					1		1
	Zika virus infection							
	Severe Fever with Thrombocytopenia Syndrome						5	57
	Hemorrhagic fever with renal syndrome							
	Western equine encephalitis							
	Tick-borne encephalitis							
	Anthrax							
	Chikungunya fever						1	1
	Scrub typhus(Tsutsugamushi disease)						5	94
	Dengue fever	3	1	1	4	24	3	80
	Eastern equine encephalitis							
	Avian influenza (excluding H5N1 and H7N9)							
	Nipah virus infection							
	Japanese spotted fever						13	110
	Japanese encephalitis							1
	Hantavirus pulmonary syndrome							
	Herpes B virus infection							
	Glanders							
	Brucellosis							1
	Venezuelan equine encephalitis							
	Hendra virus infection							
	Epidemic typhus							
	Botulism							
	Malaria		1			4	1	14
Tularemia								
Lyme disease						1	3	
Lyssavirus infection(excluding rabies)								
Rift valley fever								
Melioidosis								
Legionellosis	3	8		2	57	59	716	
Leptospirosis							2	
Rocky mountain spotted fever								

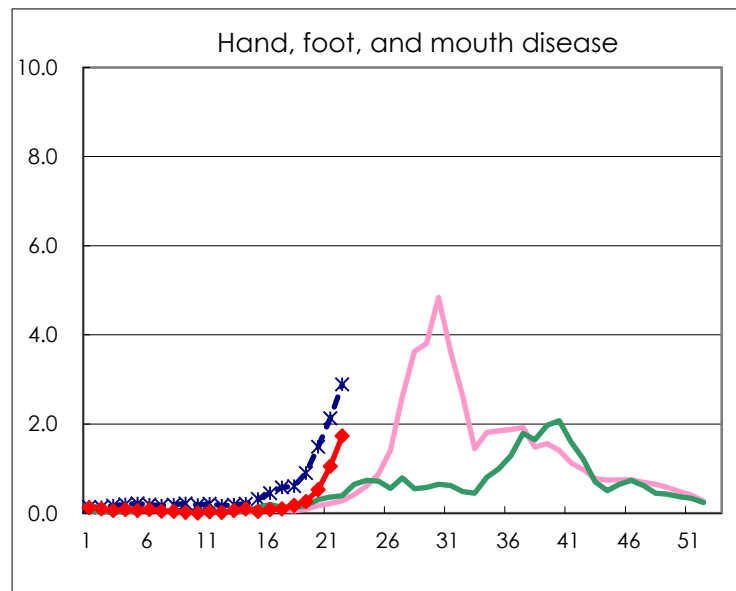
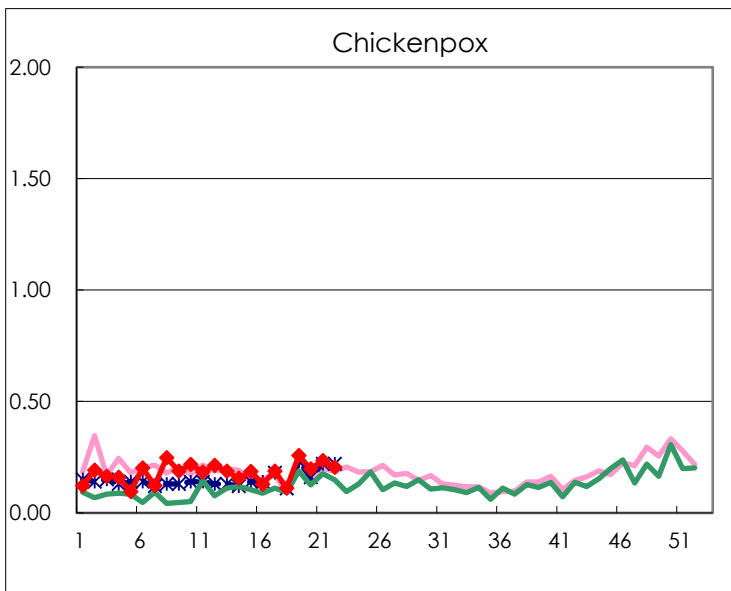
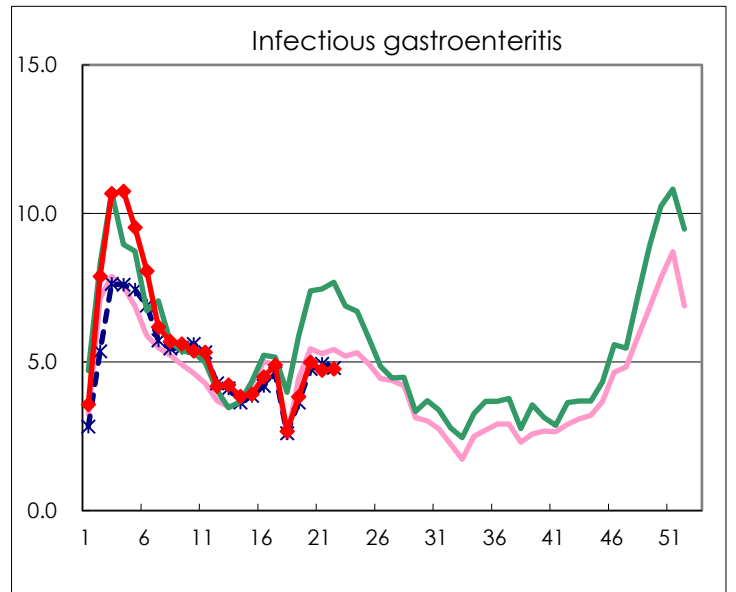
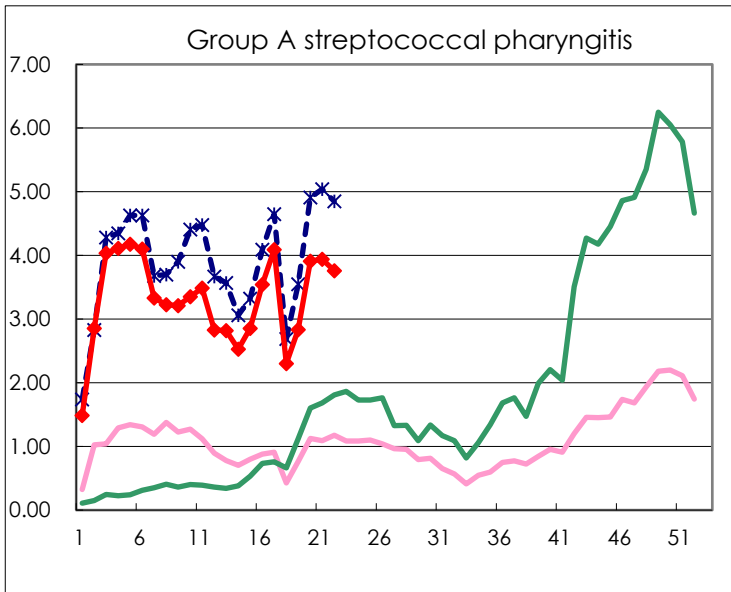
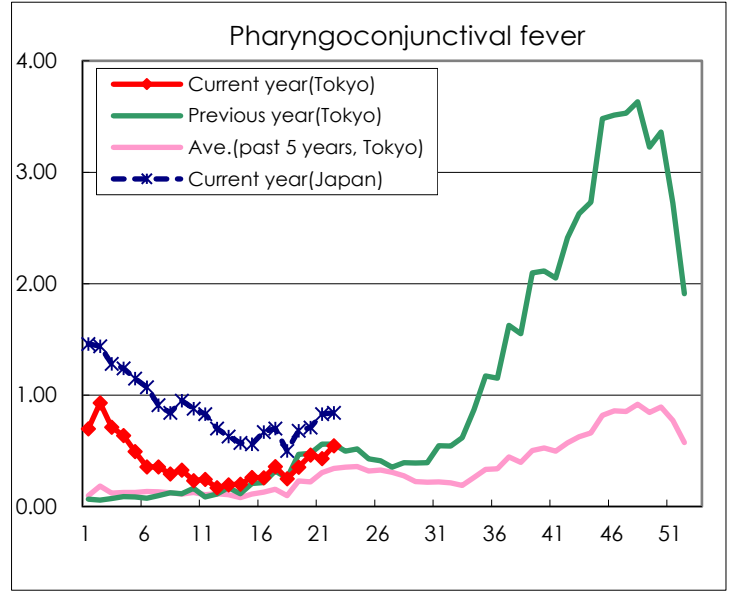
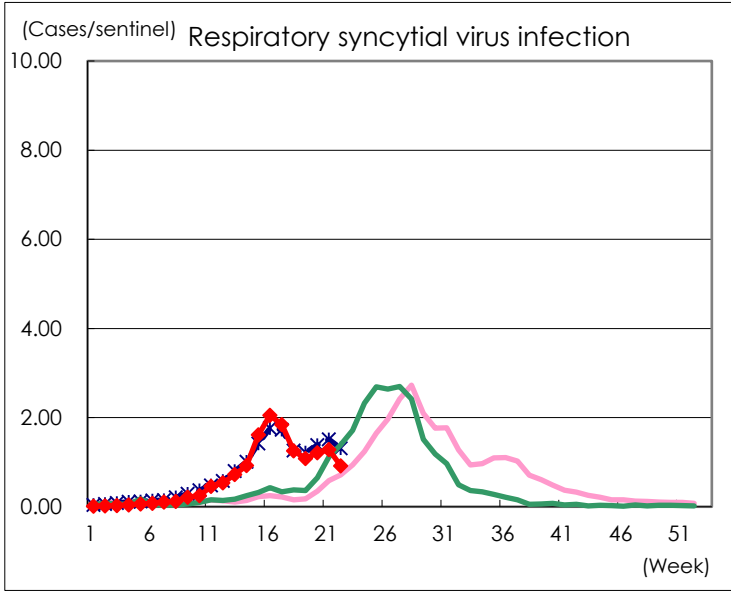
Category	Diseases	Tokyo				Japan		
		19th	20th	21st	22nd	Cum 2024	22nd	Cum 2024
V	Amebiasis		2		2	46	5	222
	Viral hepatitis(excluding hepatitis A and E)			2	1	17	5	86
	CRE infection	3	3	2	1	72	34	793
	Acute Flaccid Paralysis (excluding Acute poliomyelitis)					2		13
	Acute encephalitis(excluding JE and WNE)	4	2			22	8	255
	Cryptosporidiosis	2				5		12
	Creutzfeldt-Jakob disease					7	2	69
	Severe invasive streptococcal infections(TSLs)	9	1	4	3	147	28	977
	Acquired immunodeficiency syndrome (AIDS)	5	8	4	3	113	9	394
	Giardiasis					5	1	18
	Invasive <i>Haemophilus influenzae</i> disease	1	3	1	2	26	10	292
	Invasive meningococcal disease					2		21
	Invasive pneumococcal disease	7	9	5	5	140	58	1,241
	Varicella (limited to hospitalized case)	1			3	27	12	197
	Congenital rubella syndrome							
	Syphilis	49	94	80	72	1,454	188	5,569
	Disseminated cryptococcosis				1	9	6	94
	Tetanus	1				1	1	29
	Vancomycin-resistant <i>S. aureus</i> infection							
	Vancomycin-resistant Enterococcus infection		1			3	1	55
	Pertussis	2	2	2	11	43	33	367
	Rubella							3
	Measles			1		7		24
MDRA infection				1	1	1	2	

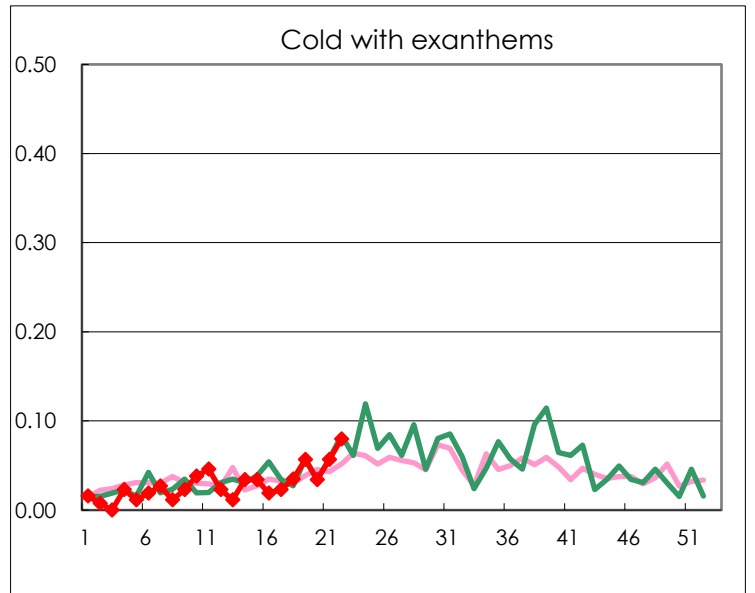
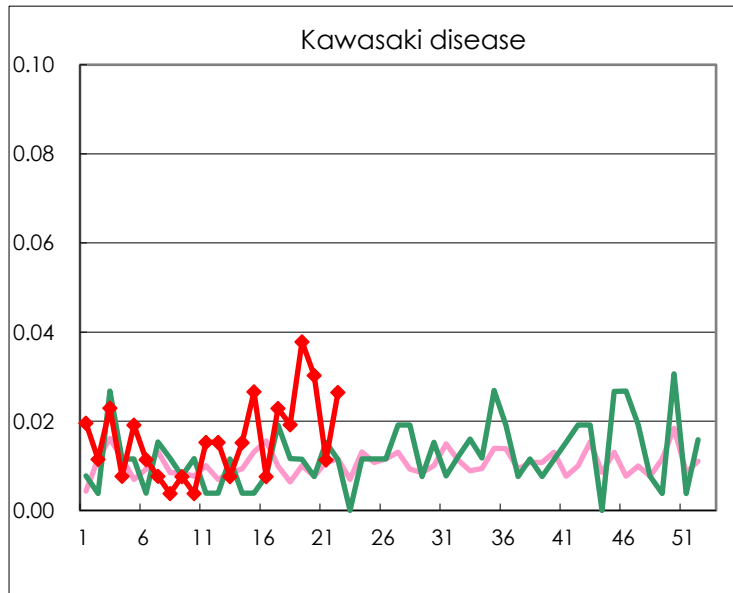
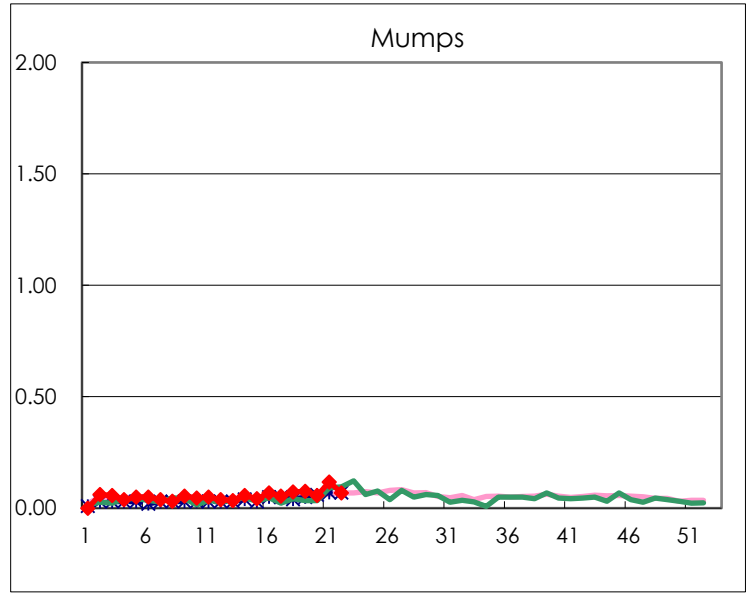
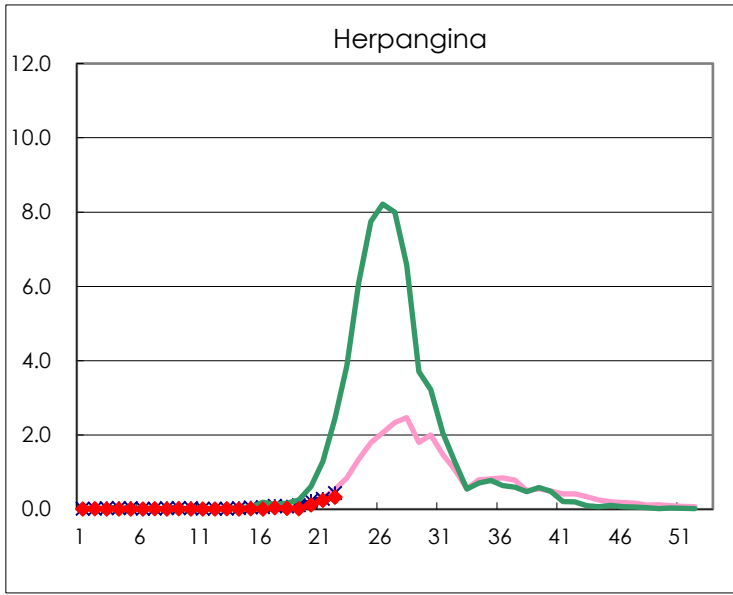
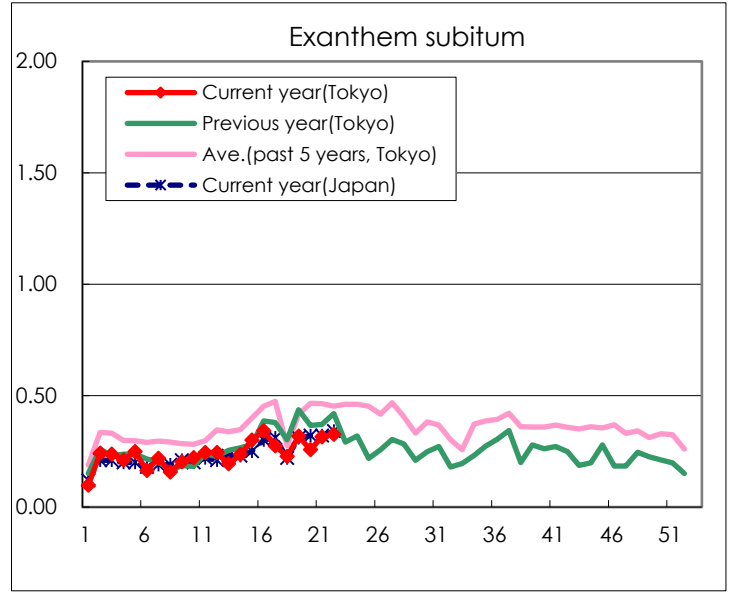
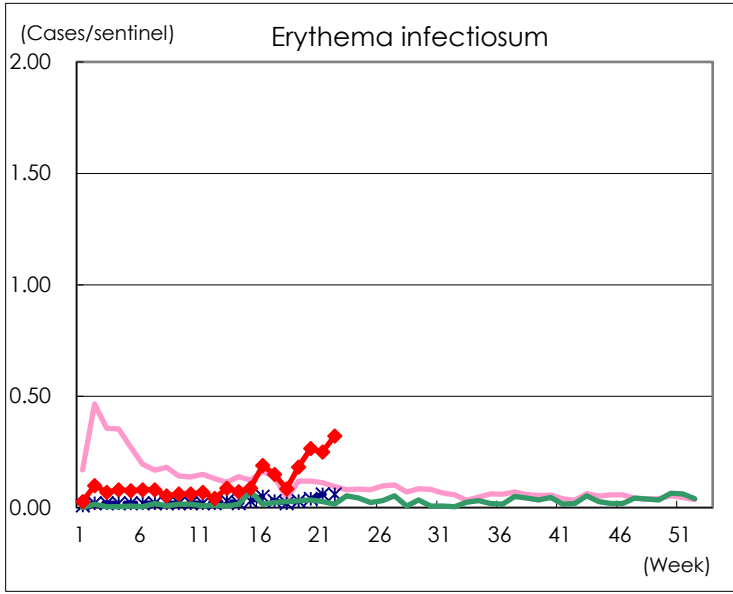
Number of patients with the diseases to be reported
by the designated clinics and hospitals

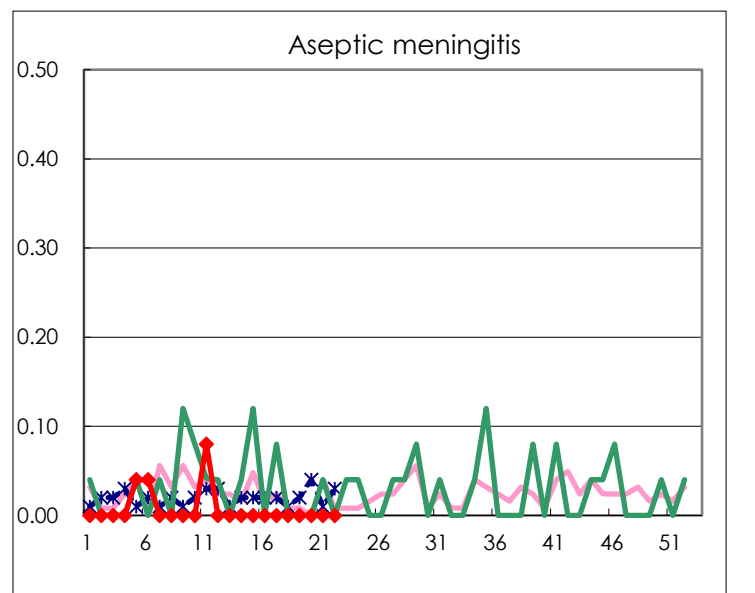
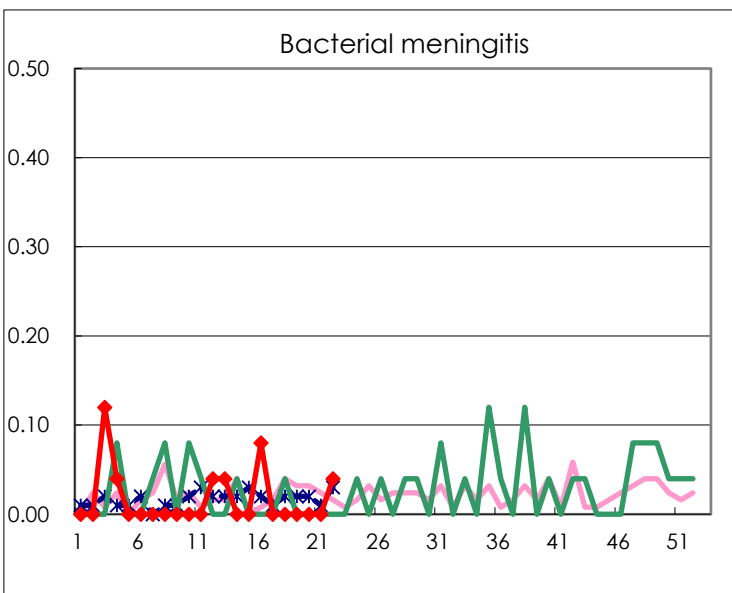
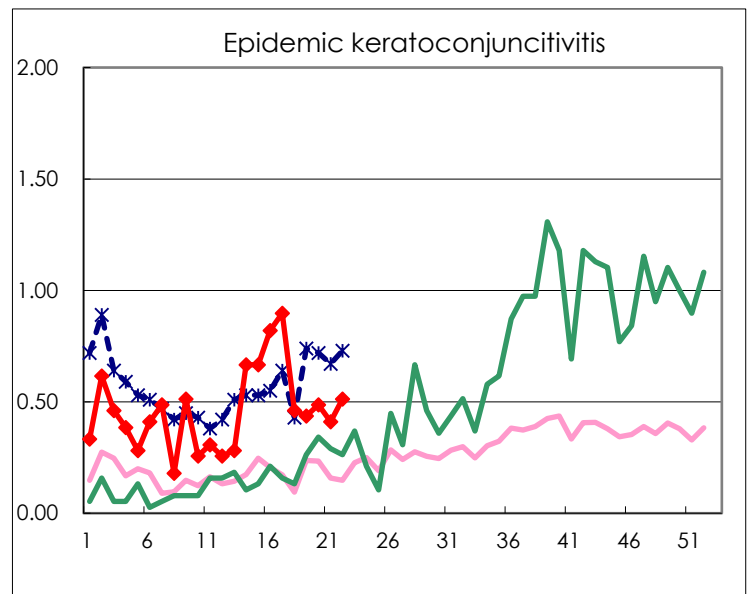
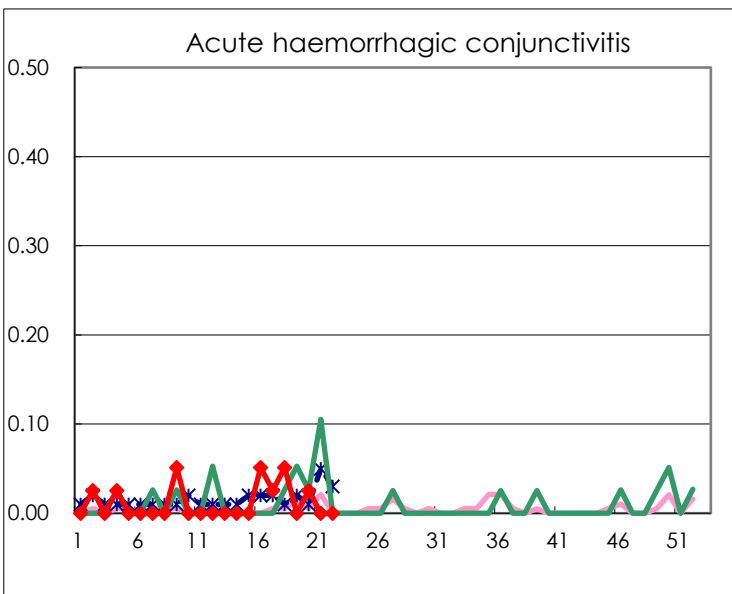
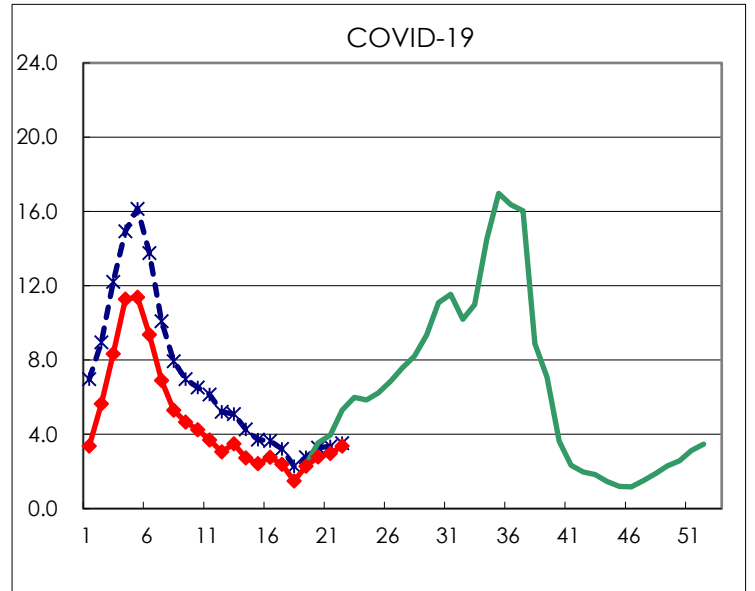
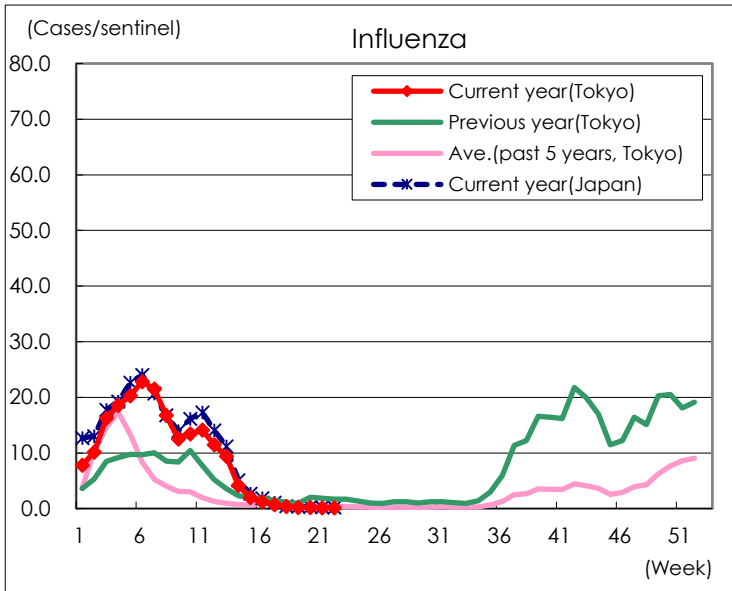
Diseases	Tokyo				
	19th	20th	21st	22nd	/sentinel
Respiratory syncytial virus infection	286	320	338	242	0.92
Pharyngoconjunctival fever	93	122	114	144	0.55
Group A streptococcal pharyngitis	748	1,033	1,040	992	3.76
Infectious gastroenteritis	1,012	1,317	1,246	1,258	4.77
Chickenpox	68	52	62	54	0.20
Hand, foot, and mouth disease	70	140	277	457	1.73
Erythema infectiosum	48	70	66	85	0.32
Exanthem subitum	84	68	83	86	0.33
Herpangina	5	31	64	86	0.33
Mumps	20	15	31	18	0.07
Kawasaki disease	10	8	3	7	0.03
Cold with exanthems	15	9	15	21	0.08
Influenza	82	73	60	53	0.13
COVID-19	955	1,164	1,246	1,412	3.37
Acute hemorrhagic conjunctivitis		1			
Epidemic keratoconjunctivitis	17	19	16	20	0.51
Bacterial meningitis				1	0.04
Aseptic meningitis					
Mycoplasma pneumonia	4	3	11	5	0.20
Chlamydial pneumonia (excluding psittacosis)	1	1	1		
Infectious gastroenteritis (only by Rotavirus)		1			
Influenza-Associated Hospitalizations	2	2	3	2	0.08
COVID-19-Associated Hospitalizations	77	91	84	103	4.12

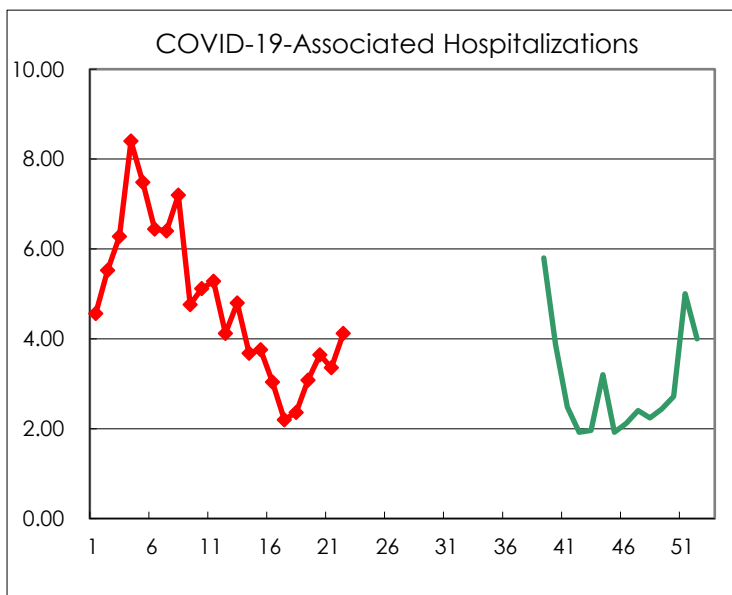
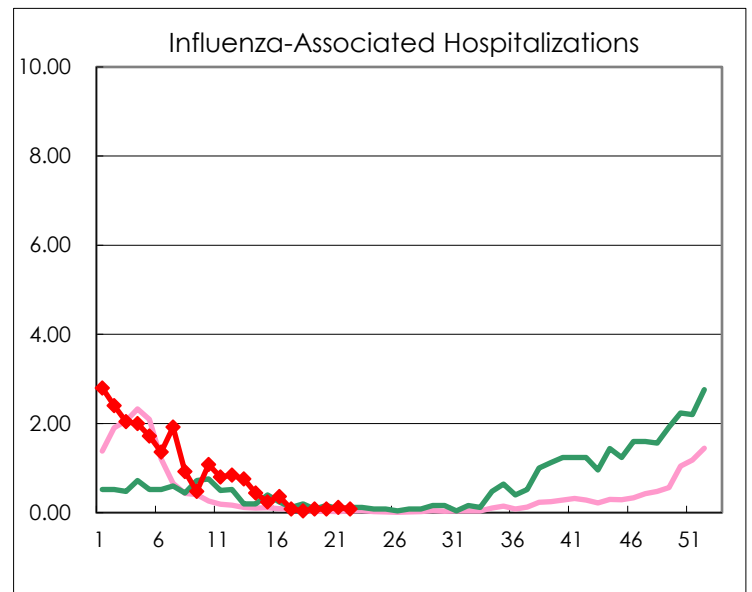
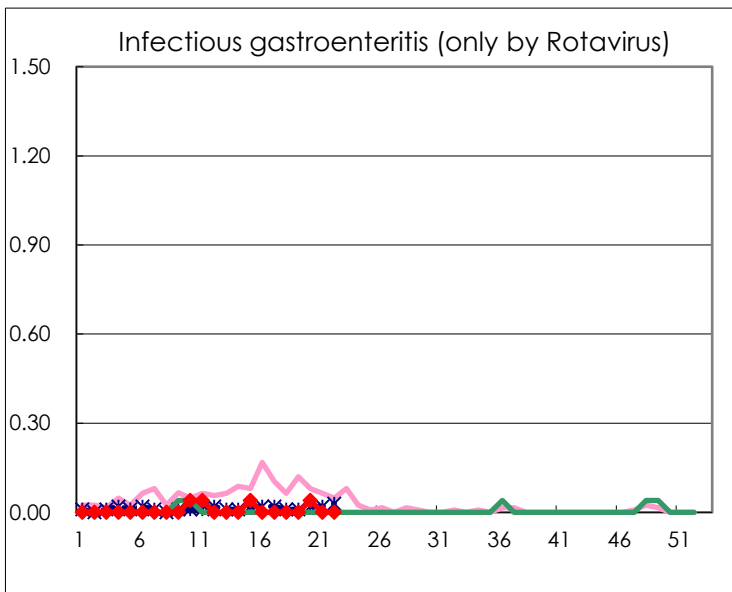
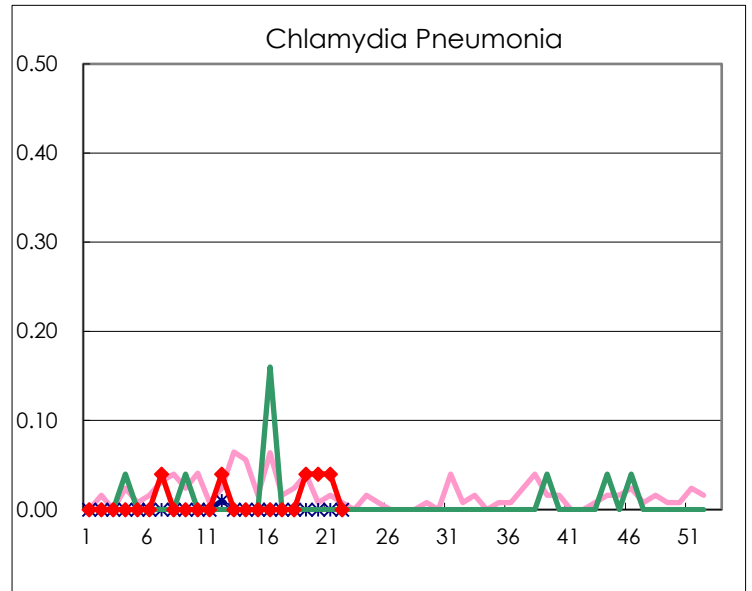
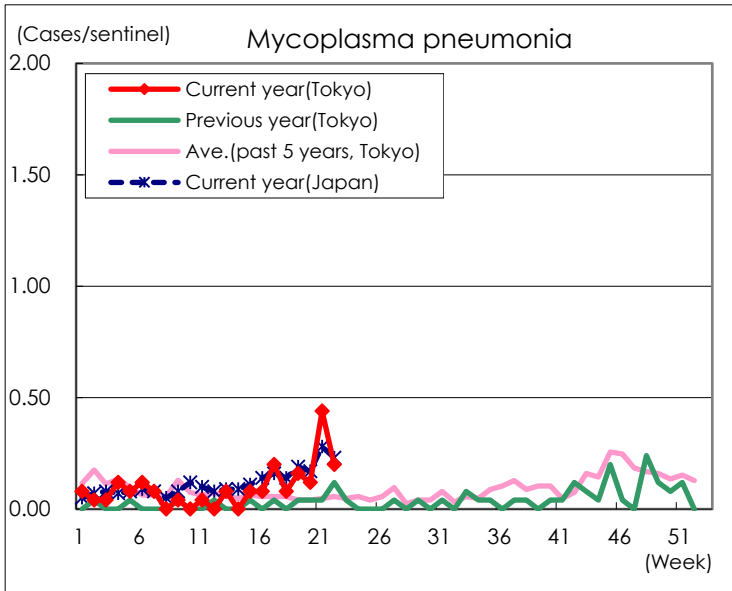
(Blank means 0.)

Disease Trend Graph (weekly reported cases per sentinel in comparison)









Number of sentinel facilities for weekly reporting		
Types of sentinels	Number of sentinels	Sentinels having reported
Pediatric	264	264
Influenza COVID-19	419	419
Ophthalmic	39	39
Specially-designated	25	25