

27. Juni 2024 / Nummer 25

17. Juni - 23. Juni

Überwachungssystem in Tokyo, Japan

Infektionskrankheiten, die der Meldepflicht durch einen Arzt unterliegen
Das Auftreten solcher Infektionskrankheiten muss von den Ärzten
umgehend an die Gesundheitszentren gemeldet werden. Die
Gesundheitszentren geben die jeweils gemeldeten individuellen Fälle an
das Überwachungszentrum für Infektionskrankheiten der Stadt Tokyo
weiter.

Infektionskrankheiten, die von stationären medizinischen Institutionen
gemeldet werden müssen

Stationäre Kliniken oder Krankenhäuser melden die Zahl ihrer Patienten
wöchentlich an die Gesundheitszentren. Die Gesundheitszentren geben
diese Zahl an das Überwachungszentrum für Infektionskrankheiten der
Stadt Tokyo weiter. Es gibt ungefähr 500 stationäre Kliniken und
Krankenhäuser in Tokyo.

Institut für öffentliche Gesundheit der Stadt Tokyo

TEL:81-3-3363-3213 FAX:81-3-5332-7365

e-mail:tmiph@section.metro.tokyo.jp

URL: idsc.tmiph.metro.tokyo.lg.jp/

Zahl der Patienten mit Krankheiten, die der Meldepflicht durch einen Arzt unterliegen

| Kategorie | Krankheiten | Diseases | Tokio | | | | |
|----------------------------|--|--|----------|----------|----------|----------|--------------------|
| | | | Woche 22 | Woche 23 | Woche 24 | Woche 25 | Kumulativ von 2024 |
| I | Ebola-Fieber | Ebola hemorrhagic fever | | | | | |
| | Krim-Kongo-Fieber | Crimean-Congo hemorrhagic fever | | | | | |
| | Pocken | Smallpox | | | | | |
| | Hämorrhagisches Fieber | South American hemorrhagic fever | | | | | |
| | Pest | Plague | | | | | |
| | Marburg-Virus | Marburg disease | | | | | |
| | Lassafieber | Lassa fever | | | | | |
| II | Akute Poliomyelitis | Acute poliomyelitis | | | | | |
| | Tuberkulose | Tuberculosis | 41 | 44 | 47 | 51 | 991 |
| | Diphtherie | Diphtheria | | | | | |
| | SARS-assoziiertes Coronavirus | Severe Acute Respiratory Syndrome (SARS) | | | | | |
| | MERS-assoziiertes Coronavirus | Middle East Respiratory Syndrome (MERS) | | | | | |
| | Vogelgrippe H5N1 | Avian influenza H5N1 | | | | | |
| | Vogelgrippe H7N9 | Avian influenza H7N9 | | | | | |
| III | Cholera | Cholera | | | | | 2 |
| | Shigellose | Shigellosis | | | | | 3 |
| | Enterohämorrhagische Escherichia coli | Enterohemorrhagic Escherichia coli infection | 5 | 6 | 8 | 10 | 98 |
| | Typhus | Typhoid fever | | | | | 2 |
| | Paratyphus | Paratyphoid fever | | | | | 2 |
| IV | Hepatitis E | Hepatitis E | 3 | 5 | 4 | 3 | 68 |
| | West-Nil-Fieber | West Nile fever | | | | | |
| | Hepatitis A | Hepatitis A | | 1 | | | 12 |
| | Echinococcus | Echinococcosis | | | | | |
| | Mpox | Mpox | | | | | 12 |
| | Gelbfieber | Yellow fever | | | | | |
| | Ornithose | Psittacosis | | | | | |
| | Omsker Fieber | Omsk hemorrhagic fever | | | | | |
| | Rückfallfieber | Relapsing fever | | | | | |
| | Kyasanur-Wald-Fieber | Kyasanur forest disease | | | | | |
| | Q-Fieber | Q fever | | | | | |
| | Tollwut | Rabies | | | | | |
| | Kokzidioidomykose | Coccidioidomycosis | | | | | 1 |
| | Zika-Virus | Zika virus infection | | | | | |
| | Schweres Fieber mit Thrombozytopenie-Syndrom (SFTSV) | Severe Fever with Thrombocytopenia Syndrome | | | | | |
| | Hämorrhagisches Fieber mit renalem Syndrom (HFRS) | Hemorrhagic fever with renal syndrome | | | | | |
| | Westliche Pferdeenzephalomyelitis | Western equine encephalitis | | | | | |
| | Virusenzephalitis, durch Zecken übertragen | Tick-borne encephalitis | | | | | |
| | Milzbrand | Anthrax | | | | | |
| | Chikungunyafieber | Chikungunya fever | | | | | |
| | Tsutsugamushi-Fieber | Scrub typhus (Tsutsugamushi disease) | | | | | |
| | Denguefieber | Dengue fever | 4 | 3 | | 1 | 28 |
| | Östliche Pferdeenzephalomyelitis | Eastern equine encephalitis | | | | | |
| | Vogelgrippe (außer H5N1 und H7N9) | Avian influenza (excluding H5N1 and H7N9) | | | | | |
| | Nipah-Virus | Nipah virus infection | | | | | |
| | Japanisches Fleckfieber (JSF) | Japanese spotted fever | | | | | |
| | Japanische Enzephalitis | Japanese encephalitis | | | | | |
| | Hantaviren | Hantavirus pulmonary syndrome | | | | | |
| | Herpes B | Herpes B virus infection | | | | | |
| | Rotz (Hautwurm) | Glanders | | | | | |
| | Brucellose | Brucellosis | | | | | |
| | Venezolanisches Pferdeenzephalomyelitis-Virus | Venezuelan equine encephalitis | | | | | |
| | Henipavirus | Hendra virus infection | | | | | |
| | Fleckfieber | Epidemic typhus | | | | | |
| | Botulismus | Botulism | | | | | |
| | Malaria | Malaria | | | 1 | | 5 |
| Tularemia | Tularemia | | | | | | |
| Lyme-Krankheit | Lyme disease | | | | | | |
| Lyssavirus | Lyssavirus infection (excluding rabies) | | | | | | |
| Rifttal-Fieber | Rift valley fever | | | | | | |
| Melioidose | Melioidosis | | | | | | |
| Legionellen | Legionellosis | 2 | 1 | 4 | 2 | 64 | |
| Leptospirose | Leptospirosis | | 1 | | | 1 | |
| Rocky-Mountain-Fleckfieber | Rocky mountain spotted fever | | | | | | |

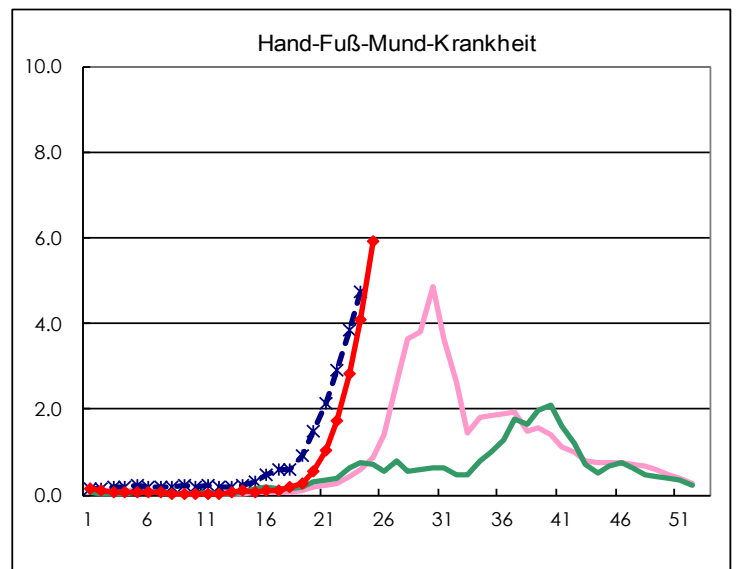
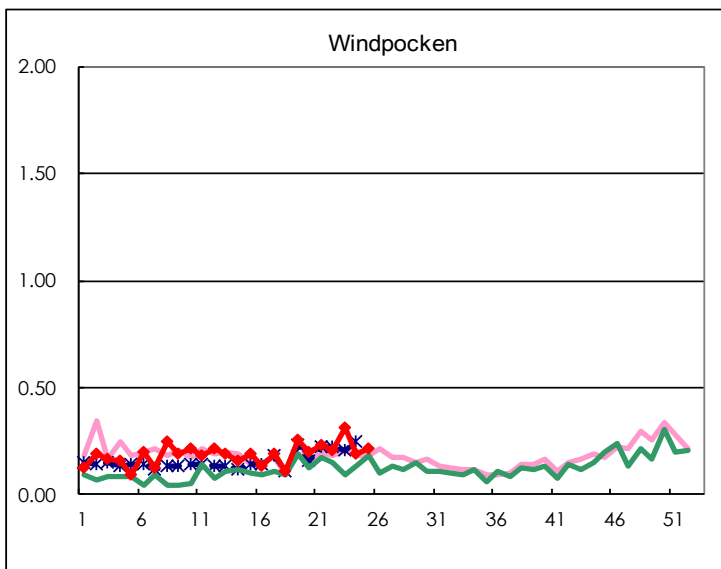
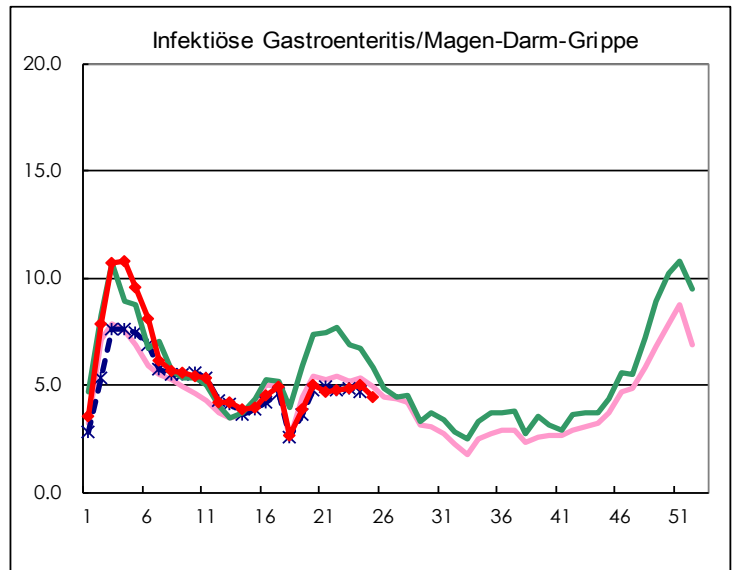
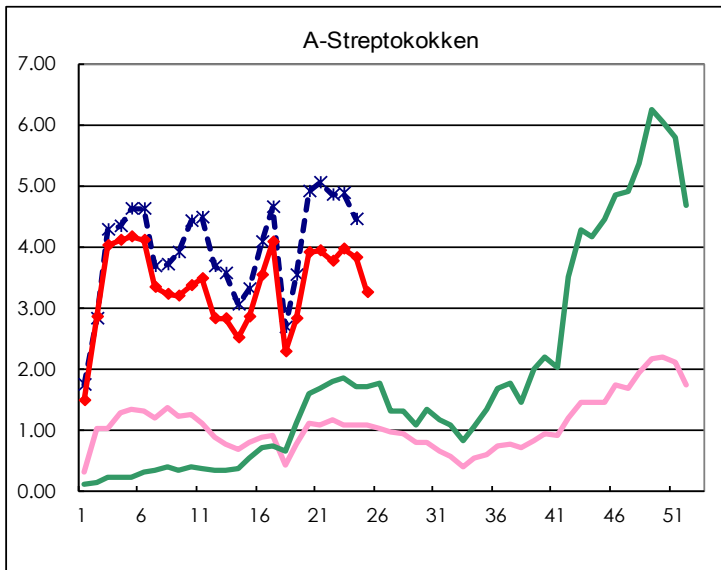
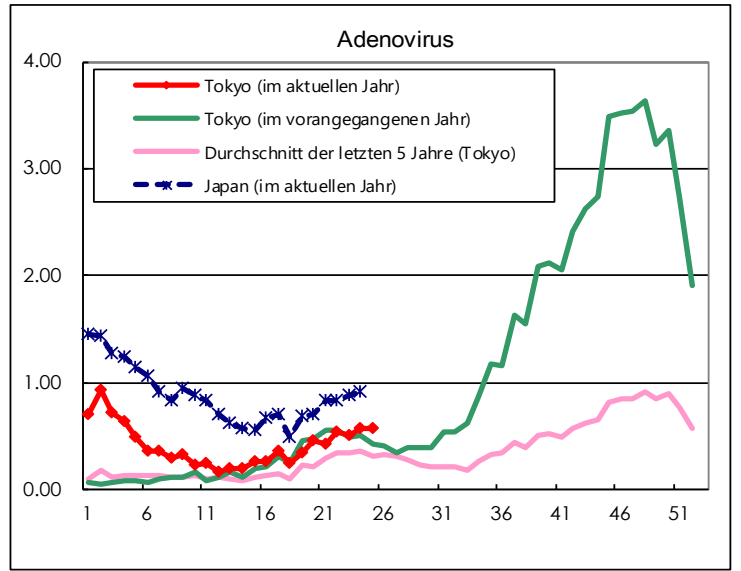
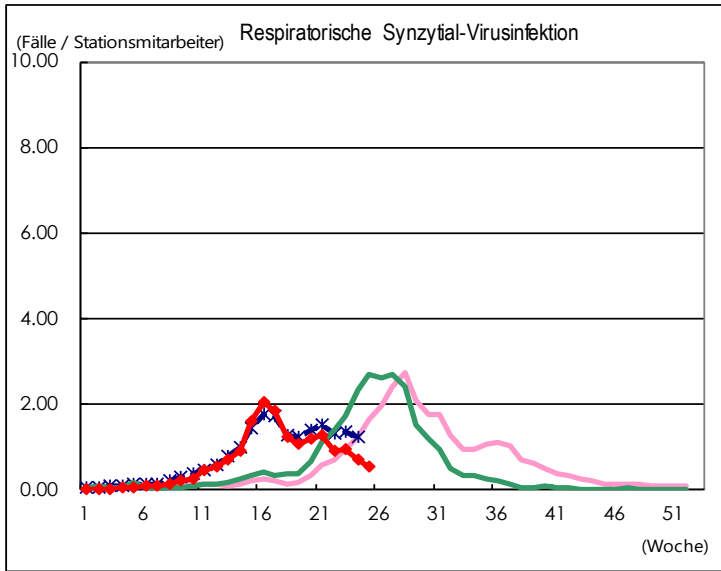
| Kategorie | Krankheiten | Diseases | Tokio | | | | |
|-------------------------------|--|---|----------|----------|----------|----------|--------------------|
| | | | Woche 22 | Woche 23 | Woche 24 | Woche 25 | Kumulativ von 2024 |
| V | Amöbenruhr | Amebiasis | 2 | 1 | | 1 | 48 |
| | Virushepatitis (ohne Hepatitis A und E) | Viral hepatitis (excluding hepatitis A and E) | 1 | | 1 | 1 | 19 |
| | CRE infection | CRE infection | 2 | 5 | 5 | 3 | 86 |
| | Acute Flaccid Paralysis (excluding Acute poliomyelitis) | Acute Flaccid Paralysis (excluding Acute poliomyelitis) | | | 1 | | 3 |
| | Encephalitis | Acute encephalitis (excluding JE and WNE) | | 1 | | | 23 |
| | Cryptosporidiosis | Cryptosporidiosis | | | | | 5 |
| | Creutzfeldt-Jakob-Krankheit | Creutzfeldt-Jakob disease | | | | 1 | 8 |
| | Hochintensive Streptokokken-Infektionen | Severe invasive streptococcal infections (TSLs) | 3 | 4 | 5 | 1 | 159 |
| | AIDS | Acquired immunodeficiency syndrome (AIDS) | 3 | 6 | 8 | 5 | 132 |
| | Giardiasis | Giardiasis | | | | | 5 |
| | Invasive Haemophilus-influenzae-b-Infektion | Invasive <i>Haemophilus influenzae</i> disease | 2 | 1 | 2 | 3 | 32 |
| | Invasive Meningokokken-Erkrankungen | Invasive meningococcal disease | | | 1 | | 3 |
| | Invasive Pneumokokken-Erkrankungen | Invasive pneumococcal disease | 7 | 9 | 6 | 3 | 160 |
| | Varizella-Zoster-Virus (auf Krankenhausfälle beschränkt) | Varicella (limited to hospitalized case) | 3 | 1 | | 2 | 30 |
| | Rötelnembryofetopathie | Congenital rubella syndrome | | | | | |
| | Syphilis | Syphilis | 75 | 87 | 74 | 77 | 1,697 |
| | Disseminierte Kryptokokkose | Disseminated cryptococcosis | 1 | | | 3 | 12 |
| | Tetanus | Tetanus | | | | | 1 |
| | Vancomycin-resistenter Staphylococcus aureus | Vancomycin-resistant <i>S. aureus</i> infection | | | | | |
| | Vancomycin-resistente Enterokokken | Vancomycin-resistant Enterococcus infection | | | 1 | | 4 |
| Pertussis (Keuchhusten) | Pertussis | 11 | 4 | 6 | 6 | 59 | |
| Röteln | Rubella | | | | | | |
| Masern | Measles | | | | | 7 | |
| Multiresistente Acinetobacter | MDRA infection | 1 | | | | 1 | |

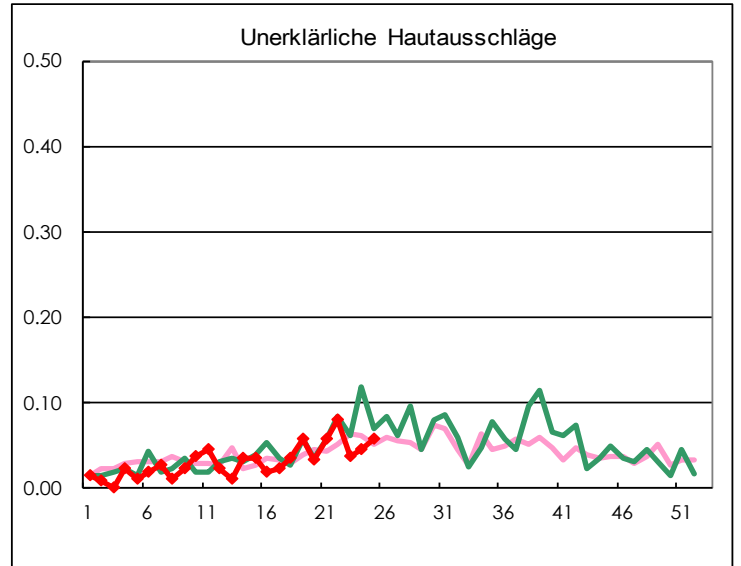
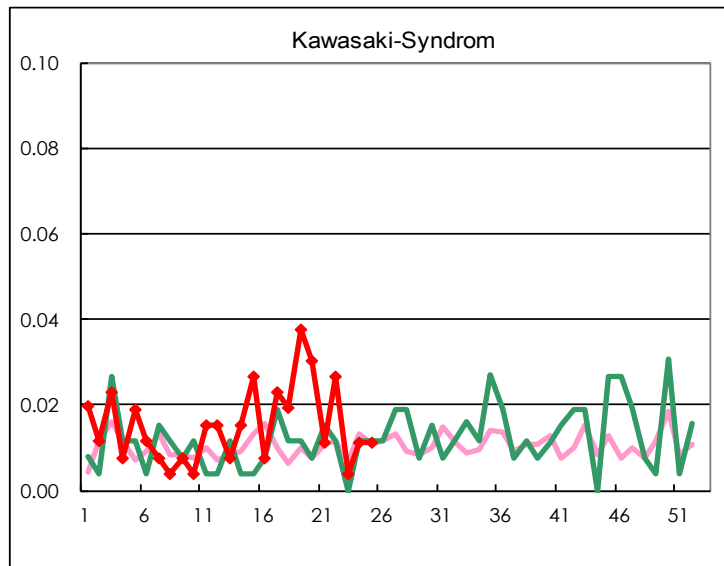
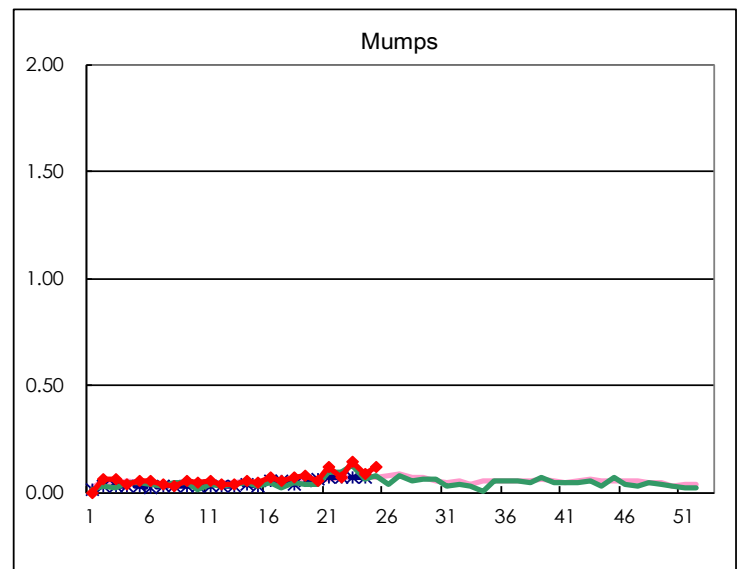
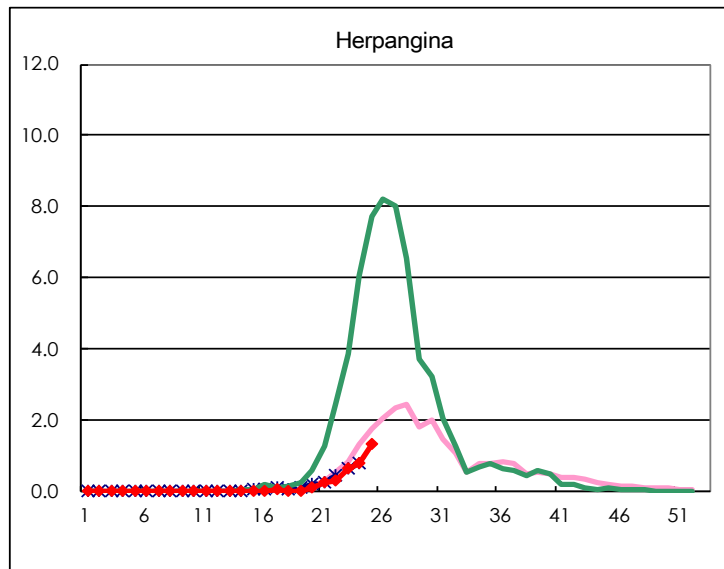
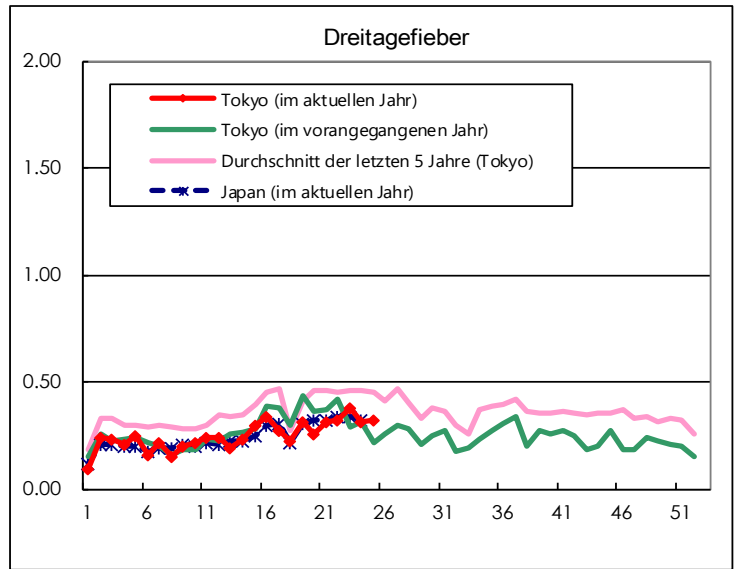
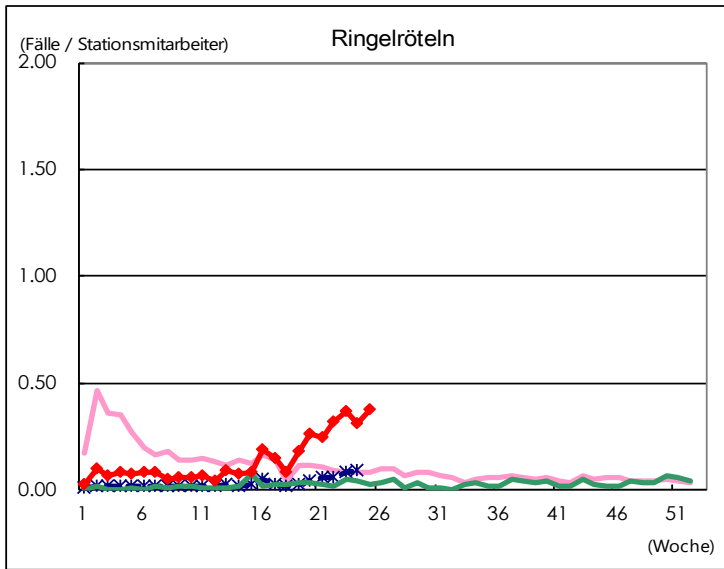
Anzahl der Patienten mit Krankheiten, die der Meldepflicht durch stationäre medizinische Institutionen unterliegen

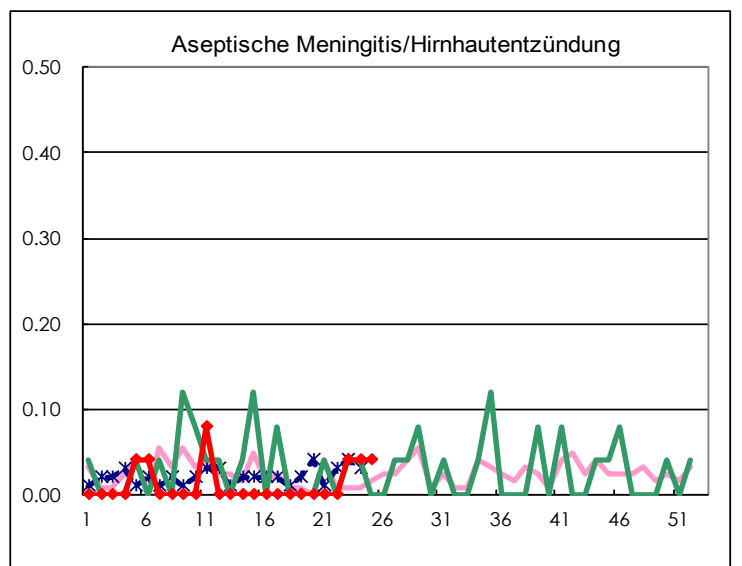
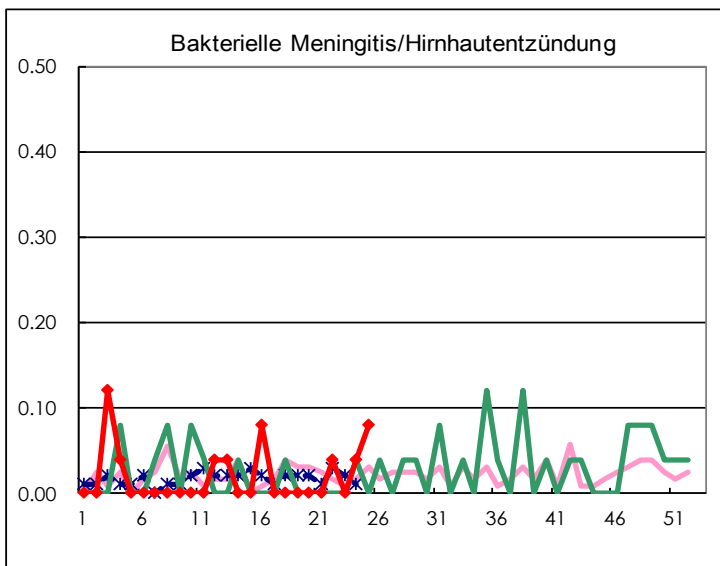
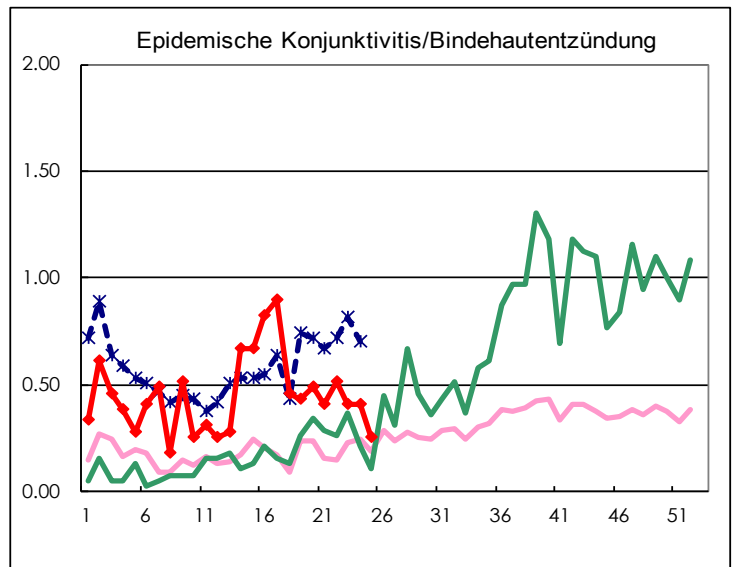
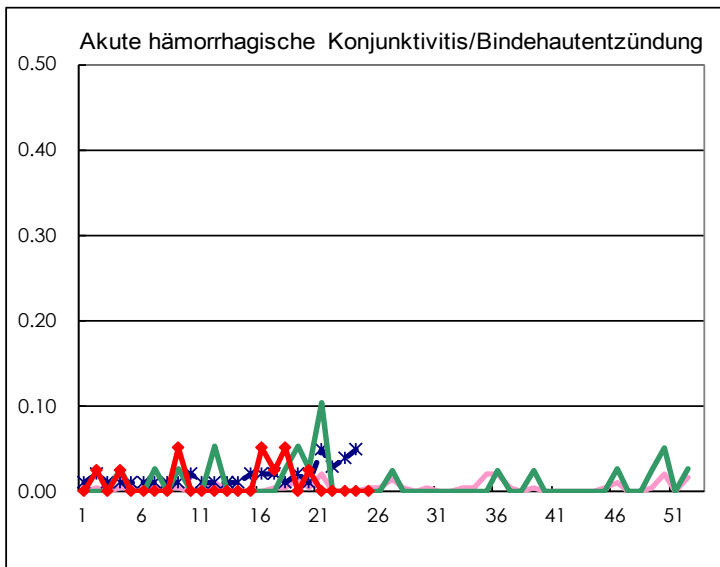
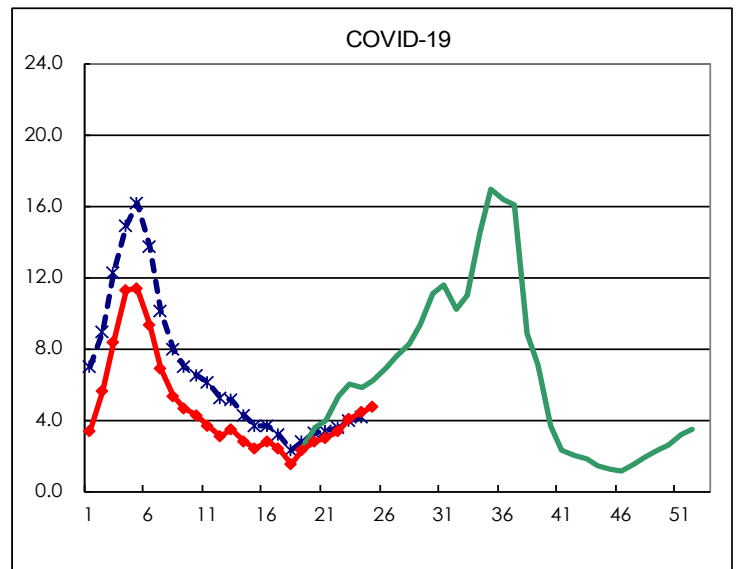
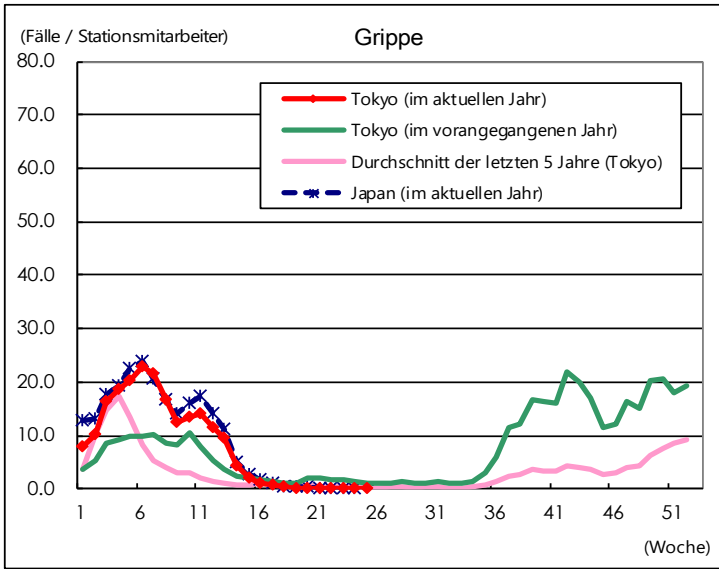
| Krankheiten | Diseases | Tokio | | | | |
|---|--|----------|----------|----------|----------|--------------|
| | | Woche 22 | Woche 23 | Woche 24 | Woche 25 | Per Sentinel |
| Respiratorische Synzytial-Virusinfektion | Respiratory syncytial virus infection | 242 | 246 | 184 | 147 | 0.56 |
| Adenovirus | Pharyngoconjunctival fever | 144 | 134 | 150 | 152 | 0.58 |
| A-Streptokokken | Group A streptococcal pharyngitis | 992 | 1,044 | 1,006 | 861 | 3.26 |
| Infektiöse Gastroenteritis/Magen-Darm-Grippe | Infectious gastroenteritis | 1,258 | 1,284 | 1,330 | 1,177 | 4.46 |
| Windpocken | Chickenpox | 54 | 82 | 50 | 56 | 0.21 |
| Hand-Fuß-Mund-Krankheit | Hand, foot, and mouth disease | 457 | 742 | 1,076 | 1,567 | 5.94 |
| Ringelröteln | Erythema infectiosum | 85 | 98 | 82 | 99 | 0.38 |
| Dreitagefieber | Exanthem subitum | 86 | 100 | 83 | 86 | 0.33 |
| Herpangina | Herpangina | 86 | 173 | 206 | 355 | 1.34 |
| Mumps | Mumps | 18 | 38 | 22 | 32 | 0.12 |
| Kawasaki-Syndrom | Kawasaki disease | 7 | 1 | 3 | 3 | 0.01 |
| Unerklärliche Hautausschläge | Cold with exanthems | 21 | 10 | 12 | 15 | 0.06 |
| Grippe | Influenza | 53 | 62 | 81 | 78 | 0.19 |
| COVID-19 | COVID-19 | 1,412 | 1,707 | 1,878 | 1,965 | 4.70 |
| Akute hämorrhagische Konjunktivitis/Bindehautentzündung | Acute hemorrhagic conjunctivitis | | | | | |
| Epidemische Konjunktivitis/Bindehautentzündung | Epidemic keratoconjunctivitis | 20 | 16 | 16 | 10 | 0.26 |
| Bakterielle Meningitis/Hirnhautentzündung | Bacterial meningitis | 1 | | 1 | 2 | 0.08 |
| Aseptische Meningitis/Hirnhautentzündung | Aseptic meningitis | | 1 | 1 | 1 | 0.04 |
| Mycoplasma pneumoniae | Mycoplasma pneumonia | 5 | 8 | 12 | 15 | 0.60 |
| Chlamydia pneumoniae (ohne Ornithose) | Chlamydial pneumonia (excluding psittacosis) | | | | | |
| Infektiöse Gastroenteritis (Rotavirus) | Infectious gastroenteritis (only by Rotavirus) | | | | 1 | 0.04 |
| Grippe-assoziierte Krankenhausaufenthalte | Influenza-Associated Hospitalizations | 1 | | | 1 | 0.04 |
| COVID-19-Associated Hospitalizations | COVID-19-Associated Hospitalizations | 105 | 101 | 120 | 135 | 5.40 |

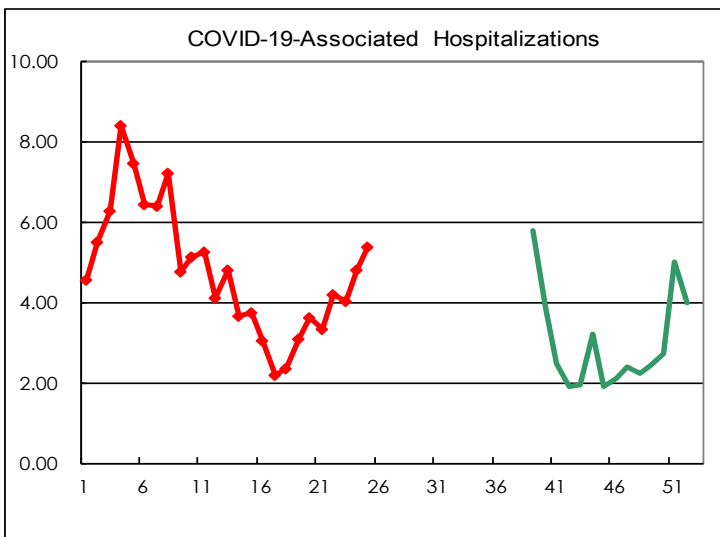
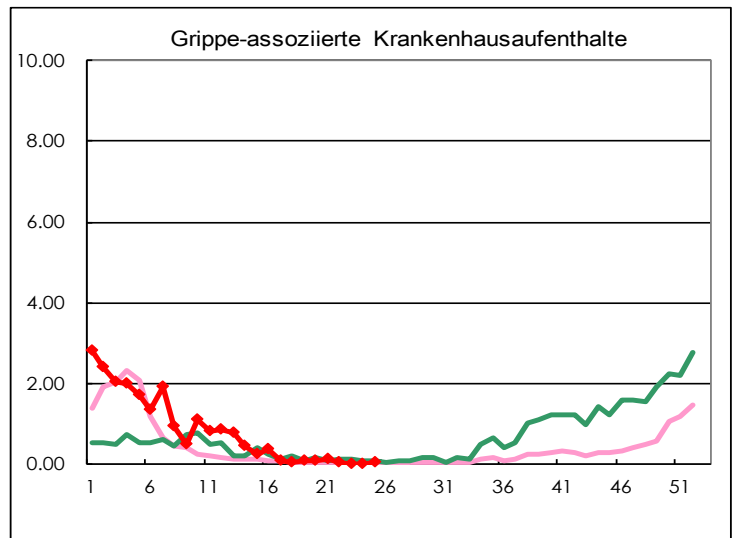
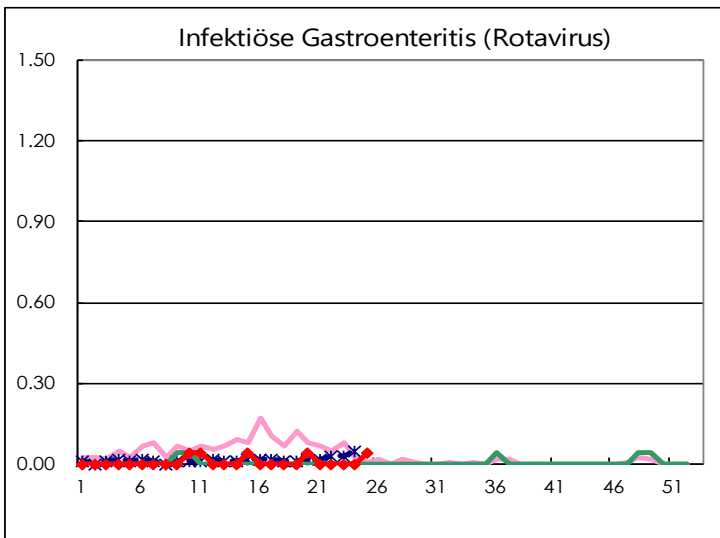
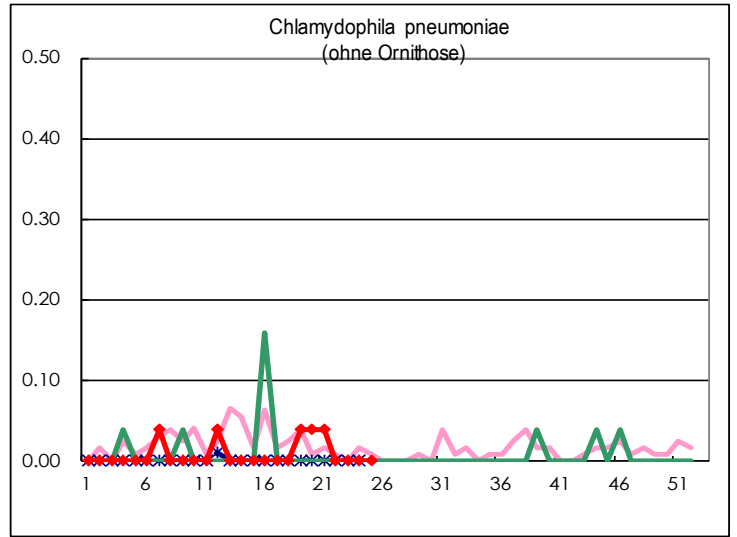
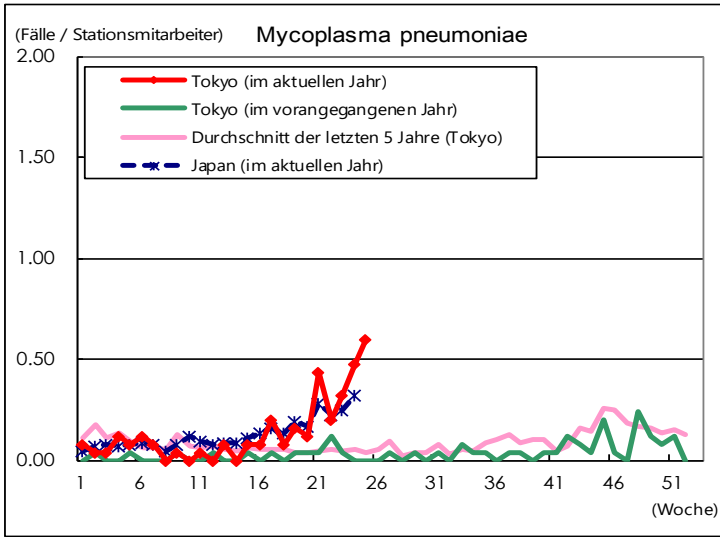
(Leer ist 0)

Anzahl der gemeldeten Fälle je Stationsmitarbeiter









| Anzahl der Sentinel-Einrichtungen für die wöchentliche Berichterstattung | | |
|--|--------------------------------|--|
| Arten von Wächtern | Anzahl der Stationsmitarbeiter | Anzahl der berichterstattenden medizinischen Institutionen |
| Pädiatrie | 264 | 264 |
| Grippe COVID-19 | 419 | 418 |
| Ophthalmisch | 39 | 39 |
| Speziell bezeichnet | 25 | 25 |