

---

INFECTIOUS DISEASES WEEKLY REPORT

# TOKYO IDWR

Tokyo Metropolitan Infectious Disease Surveillance Center

**27 June 2024 / Number 25**  
**( 6/17 ~ 6/23 )**

## Surveillance System in Tokyo, Japan

The infectious diseases which all physicians must report  
All physicians must report to health centers the incidence of the diseases which are shown at page one. Health centers electronically report the individual cases to Tokyo Metropolitan Infectious Disease Surveillance Center.

The infectious diseases required to be reported by the sentinels  
The numbers of patients who visit the sentinel clinics or hospitals during a week are reported to health centers in Tokyo. And they electronically report the numbers to Tokyo Metropolitan Infectious Disease Surveillance Center. We have about 500 sentinel clinics and hospitals in Tokyo.

Tokyo Metropolitan Institute of Public Health

TEL:81-3-3363-3213 FAX:81-3-5332-7365

e-mail:tmiph@section.metro.tokyo.jp

URL:idsc.tmiph.metro.tokyo.lg.jp/

---

Number of patients with the diseases which all physicians must report

Category	Diseases	Tokyo				
		22nd	23rd	24th	25th	Cum 2024
I	Ebola hemorrhagic fever					
	Crimean-Congo hemorrhagic fever					
	Smallpox					
	South American hemorrhagic fever					
	Plague					
	Marburg disease					
	Lassa fever					
II	Acute poliomyelitis					
	Tuberculosis	41	44	47	51	991
	Diphtheria					
	Severe Acute Respiratory Syndrome(SARS)					
	Middle East Respiratory Syndrome (MERS)					
	Avian influenza H5N1					
	Avian influenza H7N9					
III	Cholera					2
	Shigellosis					3
	Enterohemorrhagic Escherichia coli infection	5	6	8	10	98
	Typhoid fever					2
	Paratyphoid fever					2
IV	Hepatitis E	3	5	4	3	68
	West Nile fever					
	Hepatitis A		1			12
	Echinococcosis					
	Mpox					12
	Yellow fever					
	Psittacosis					
	Omsk hemorrhagic fever					
	Relapsing fever					
	Kyasanur forest disease					
	Q fever					
	Rabies					
	Coccidioidomycosis					1
	Zika virus infection					
	Severe Fever with Thrombocytopenia Syndrome					
	Hemorrhagic fever with renal syndrome					
	Western equine encephalitis					
	Tick-borne encephalitis					
	Anthrax					
	Chikungunya fever					
	Scrub typhus(Tsutsugamushi disease)					
	Dengue fever	4	3		1	28
	Eastern equine encephalitis					
	Avian influenza (excluding H5N1 and H7N9)					
	Nipah virus infection					
	Japanese spotted fever					
	Japanese encephalitis					
	Hantavirus pulmonary syndrome					
	Herpes B virus infection					
	Glanders					
	Brucellosis					
	Venezuelan equine encephalitis					
	Hendra virus infection					
	Epidemic typhus					
	Botulism					
	Malaria			1		5
Tularemia						
Lyme disease						
Lyssavirus infection(excluding rabies)						
Rift valley fever						
Melioidosis						
Legionellosis	2	1	4	2	64	
Leptospirosis		1			1	
Rocky mountain spotted fever						

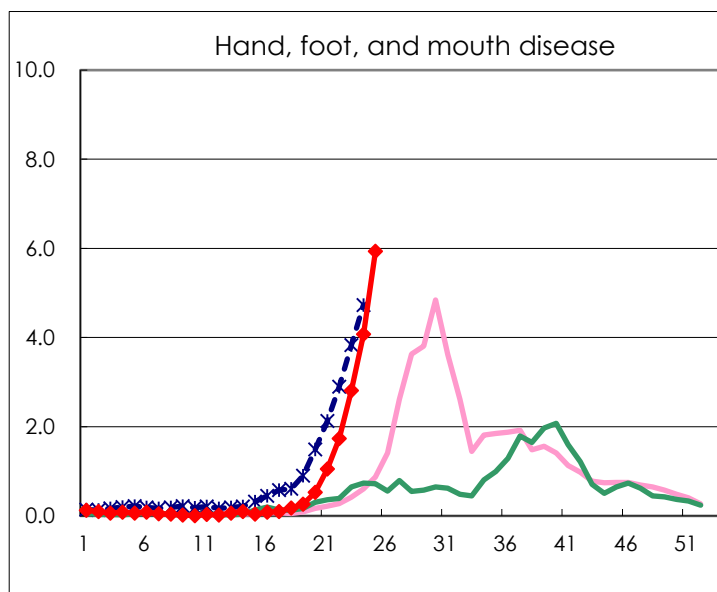
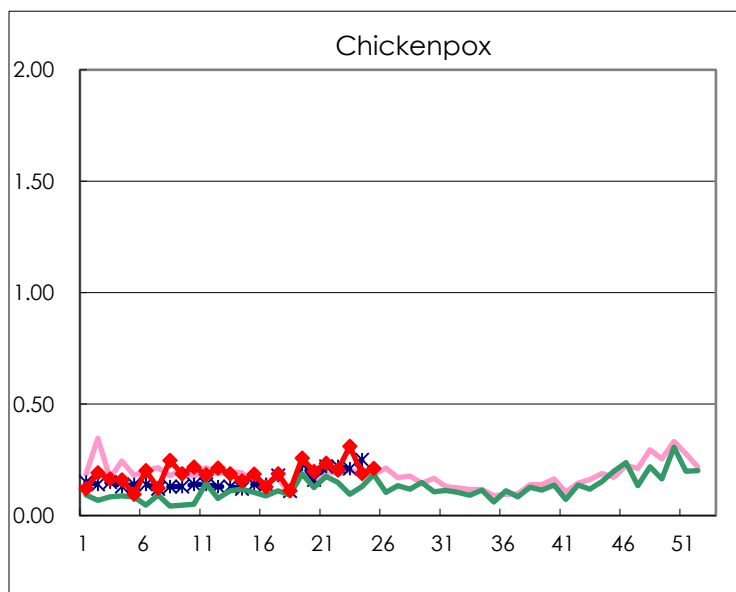
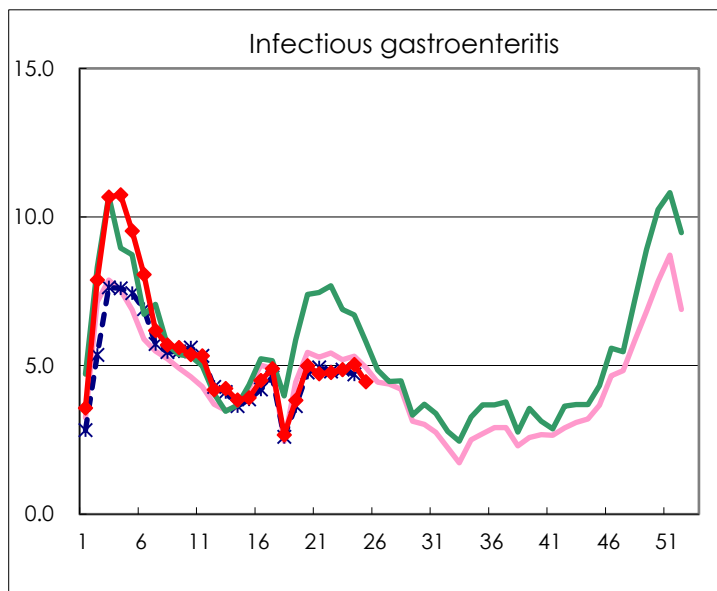
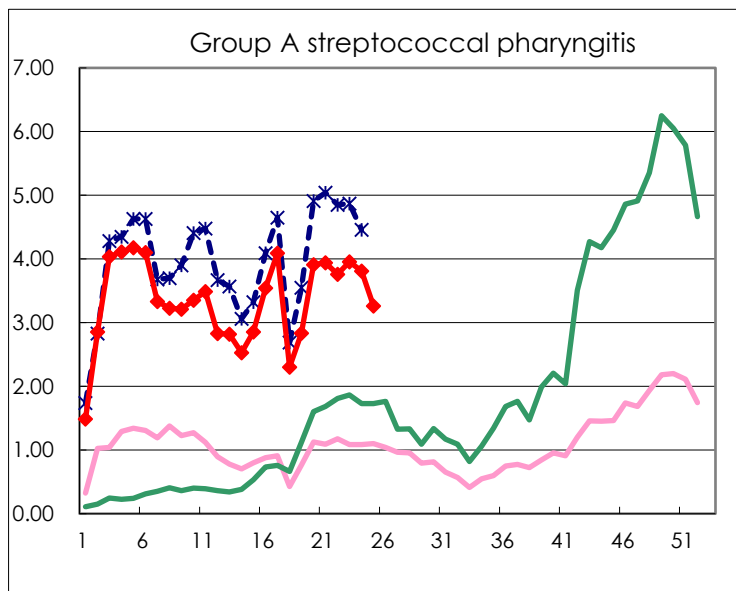
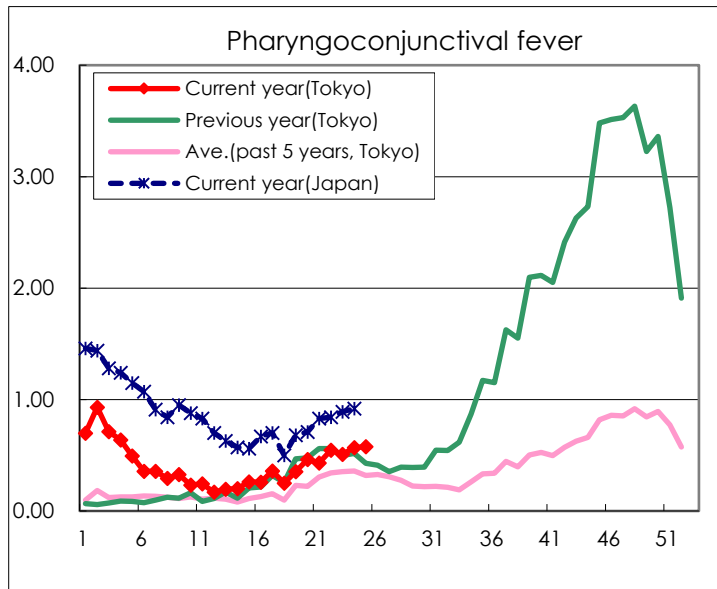
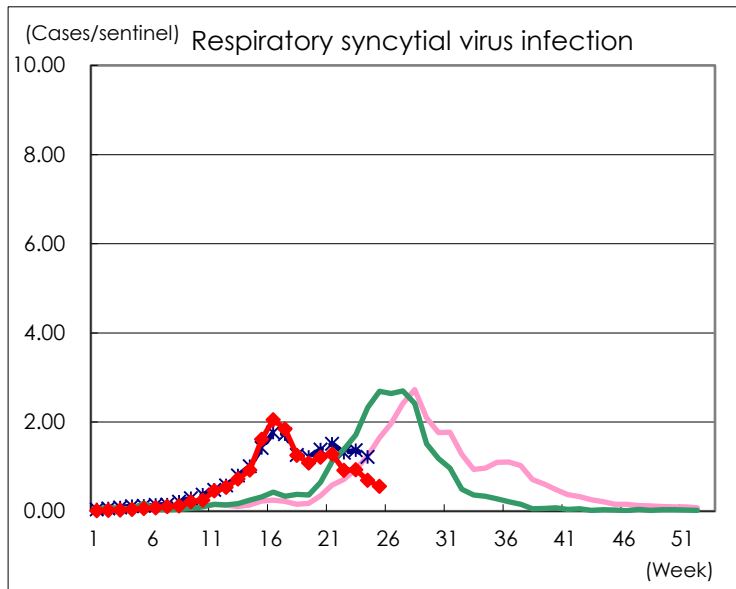
Category	Diseases	Tokyo				
		22nd	23rd	24th	25th	Cum 2024
V	Amebiasis	2	1		1	48
	Viral hepatitis(excluding hepatitis A and E)	1		1	1	19
	CRE infection	2	5	5	3	86
	Acute Flaccid Paralysis (excluding Acute poliomyelitis)			1		3
	Acute encephalitis(excluding JE and WNE)		1			23
	Cryptosporidiosis					5
	Creutzfeldt-Jakob disease				1	8
	Severe invasive streptococcal infections(TSLS)	3	4	5	1	159
	Acquired immunodeficiency syndrome (AIDS)	3	6	8	5	132
	Giardiasis					5
	Invasive <i>Haemophilus influenzae</i> disease	2	1	2	3	32
	Invasive meningococcal disease			1		3
	Invasive pneumococcal disease	7	9	6	3	160
	Varicella (limited to hospitalized case)	3	1		2	30
	Congenital rubella syndrome					
	Syphilis	75	87	74	77	1,697
	Disseminated cryptococcosis	1			3	12
	Tetanus					1
	Vancomycin-resistant <i>S. aureus</i> infection					
	Vancomycin-resistant Enterococcus infection			1		4
	Pertussis	11	4	6	6	59
	Rubella					
	Measles					7
MDRA infection	1				1	

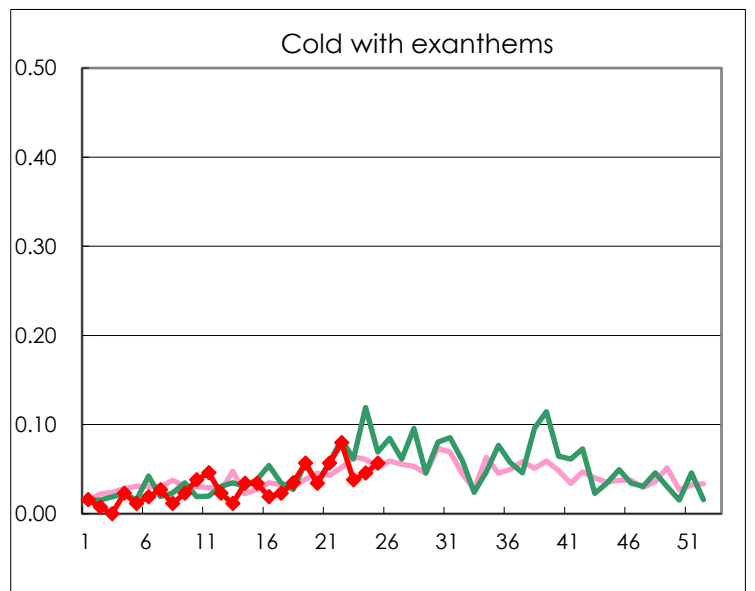
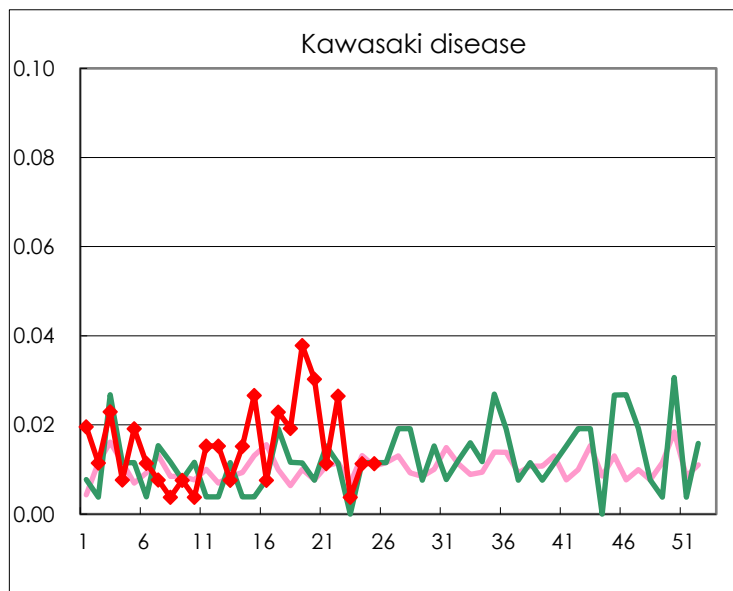
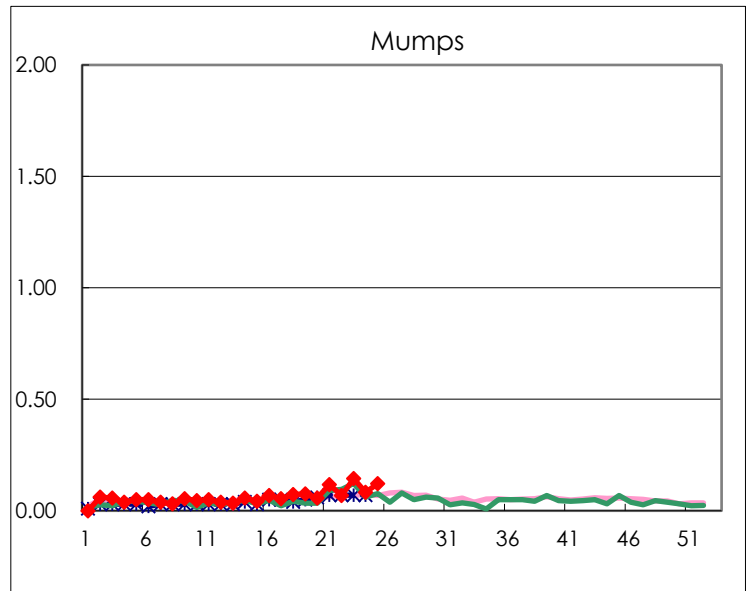
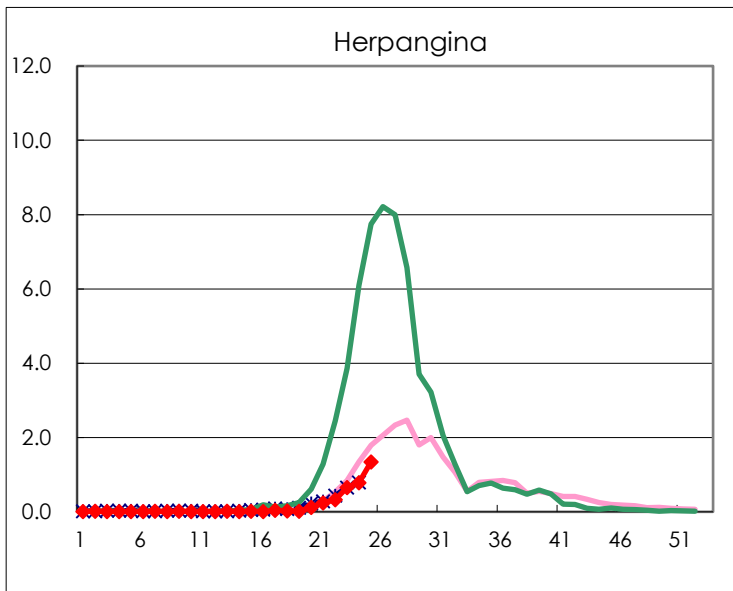
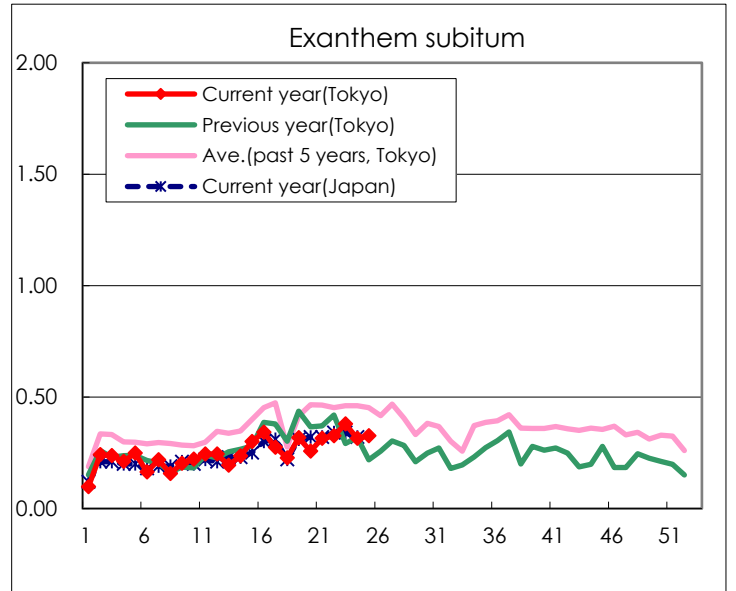
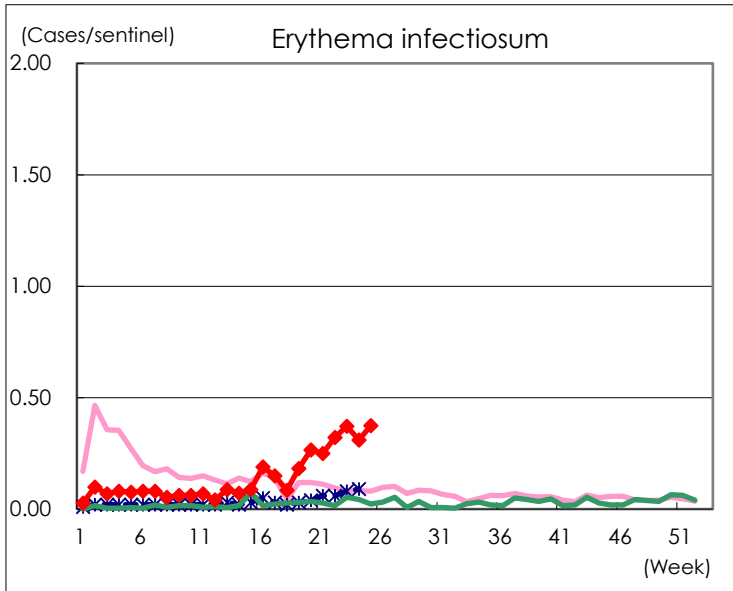
Number of patients with the diseases to be reported  
by the designated clinics and hospitals

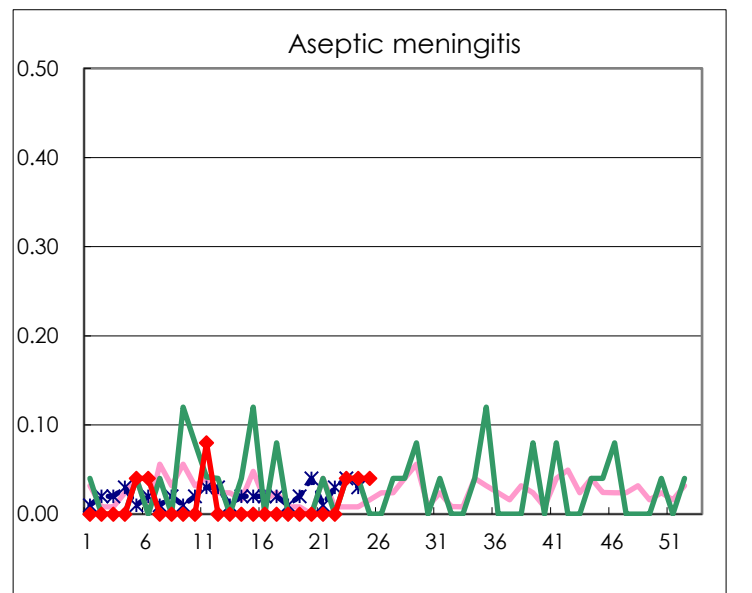
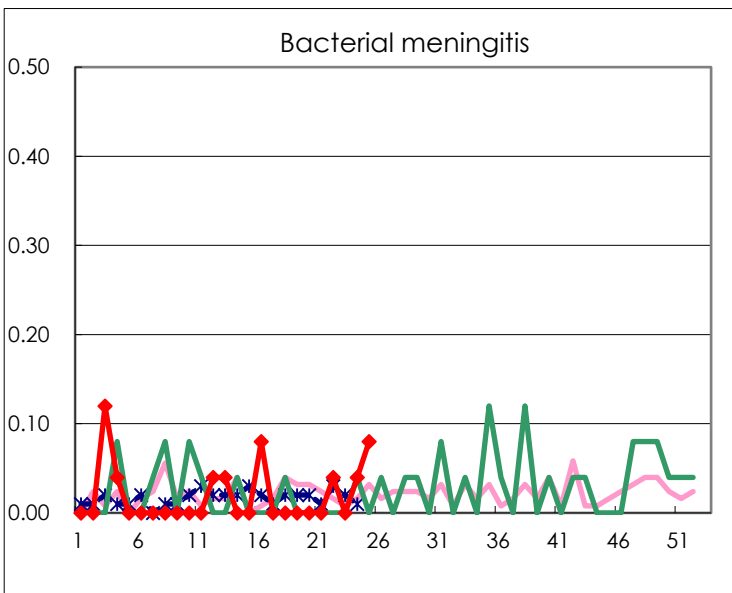
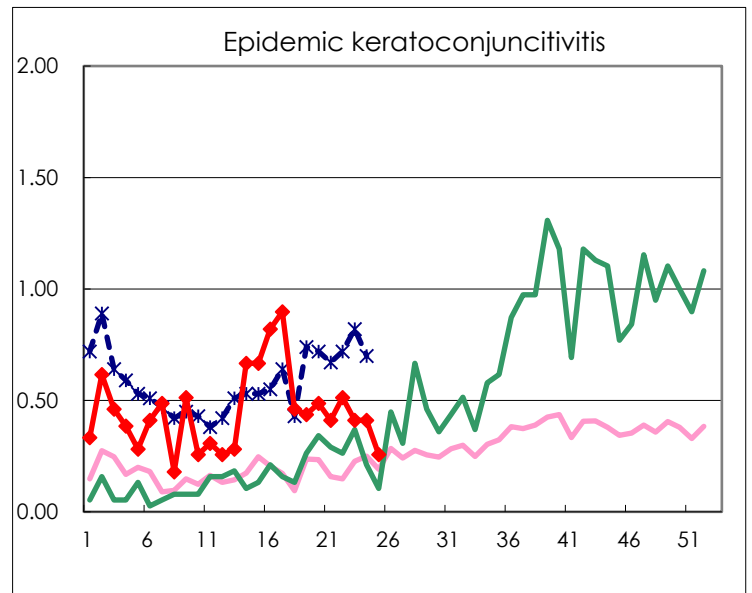
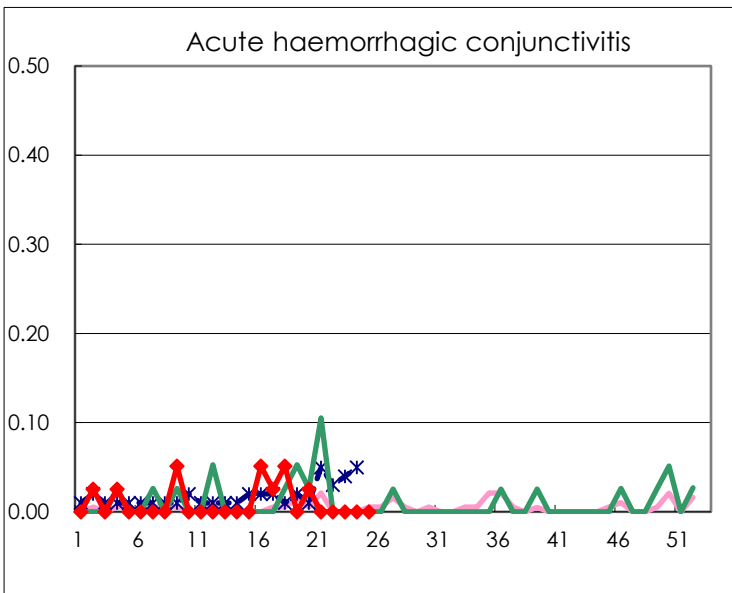
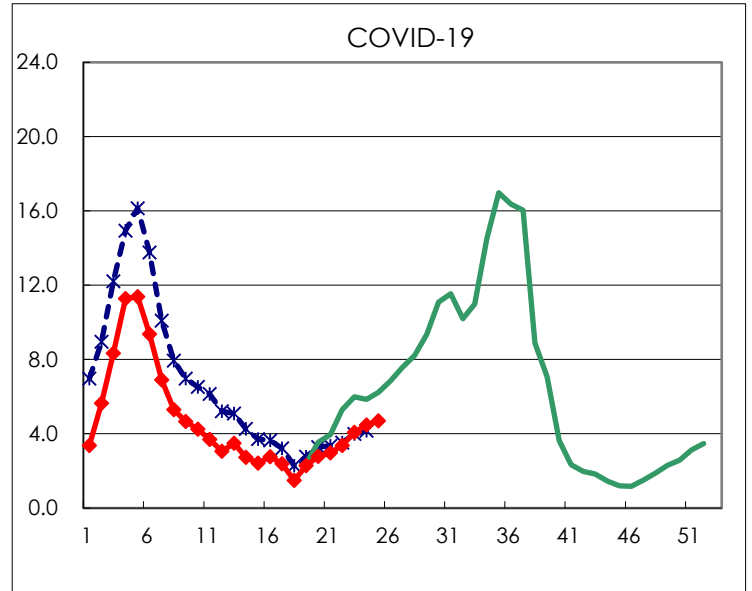
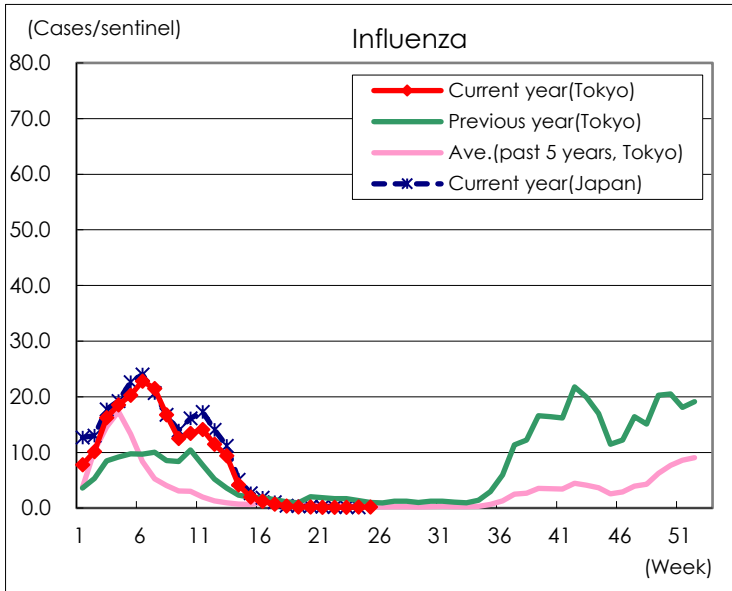
Diseases	Tokyo				
	22nd	23rd	24th	25th	/sentinel
Respiratory syncytial virus infection	242	246	184	147	0.56
Pharyngoconjunctival fever	144	134	150	152	0.58
Group A streptococcal pharyngitis	992	1,044	1,006	861	3.26
Infectious gastroenteritis	1,258	1,284	1,330	1,177	4.46
Chickenpox	54	82	50	56	0.21
Hand, foot, and mouth disease	457	742	1,076	1,567	5.94
Erythema infectiosum	85	98	82	99	0.38
Exanthem subitum	86	100	83	86	0.33
Herpangina	86	173	206	355	1.34
Mumps	18	38	22	32	0.12
Kawasaki disease	7	1	3	3	0.01
Cold with exanthems	21	10	12	15	0.06
Influenza	53	62	81	78	0.19
COVID-19	1,412	1,707	1,878	1,965	4.70
Acute hemorrhagic conjunctivitis					
Epidemic keratoconjunctivitis	20	16	16	10	0.26
Bacterial meningitis	1		1	2	0.08
Aseptic meningitis		1	1	1	0.04
Mycoplasma pneumonia	5	8	12	15	0.60
Chlamydial pneumonia (excluding psittacosis)					
Infectious gastroenteritis (only by Rotavirus)				1	0.04
Influenza-Associated Hospitalizations	1			1	0.04
COVID-19-Associated Hospitalizations	105	101	120	135	5.40

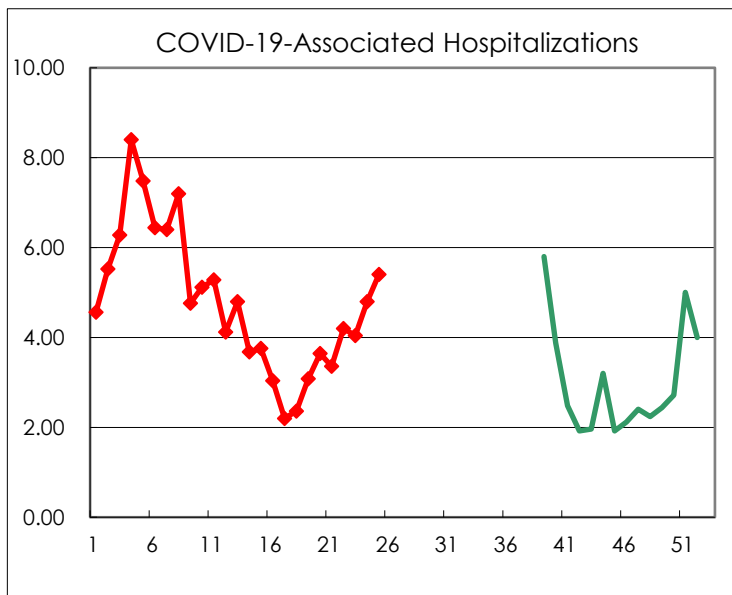
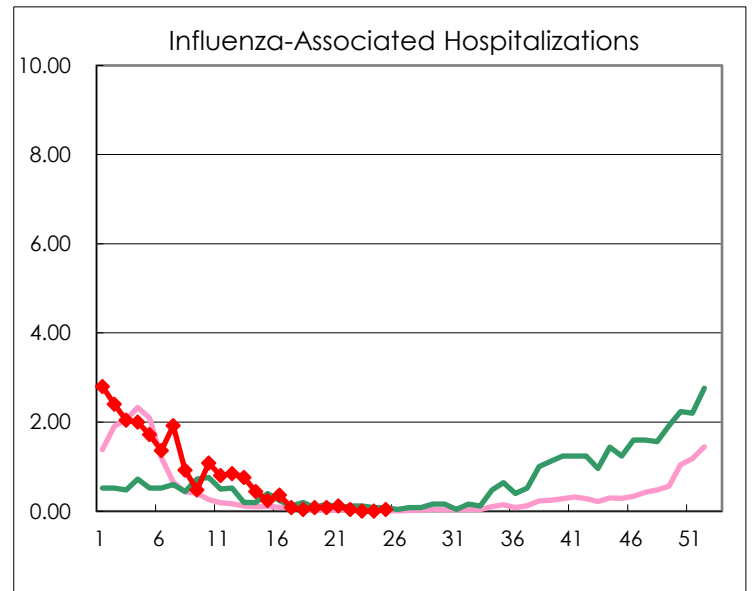
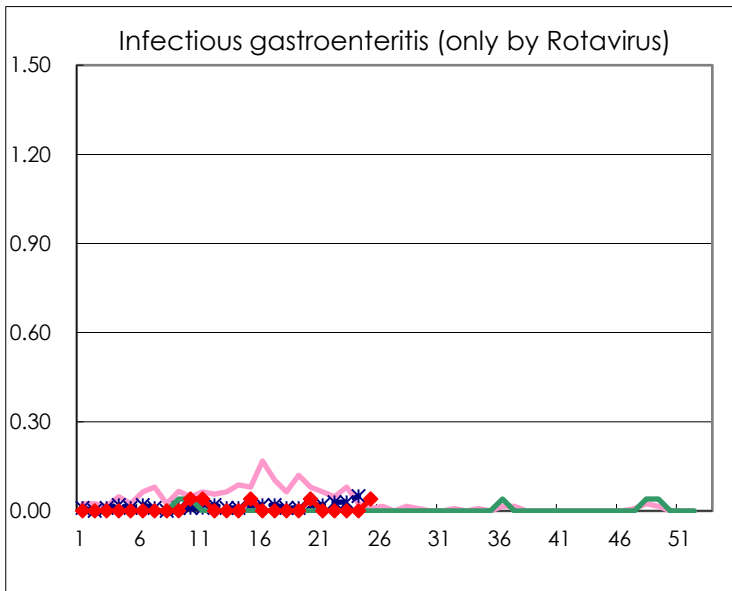
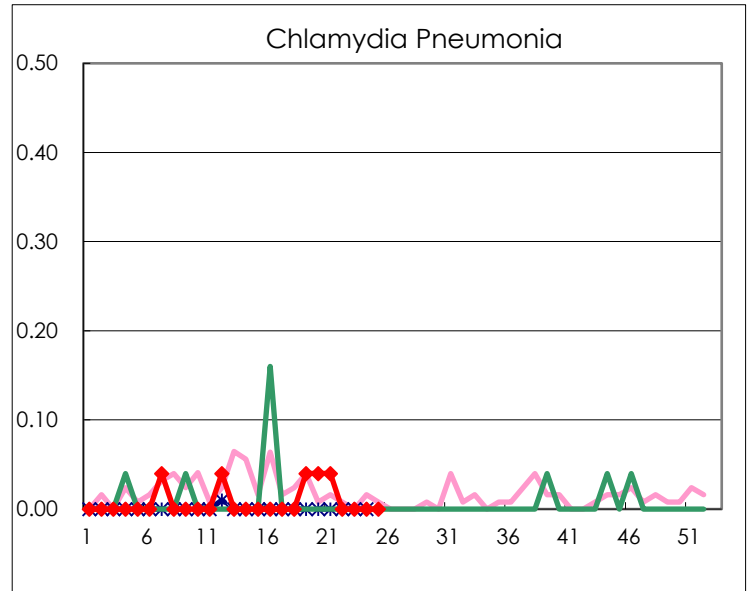
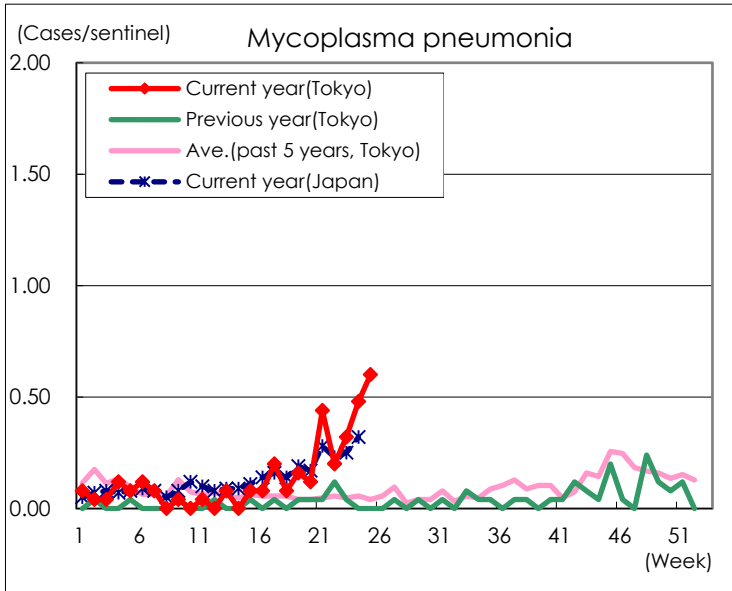
( Blank means 0. )

# Disease Trend Graph (weekly reported cases per sentinel in comparison)









Number of sentinel facilities for weekly reporting		
Types of sentinels	Number of sentinels	Sentinels having reported
Pediatric	264	264
Influenza COVID-19	419	418
Ophthalmic	39	39
Specially-designated	25	25